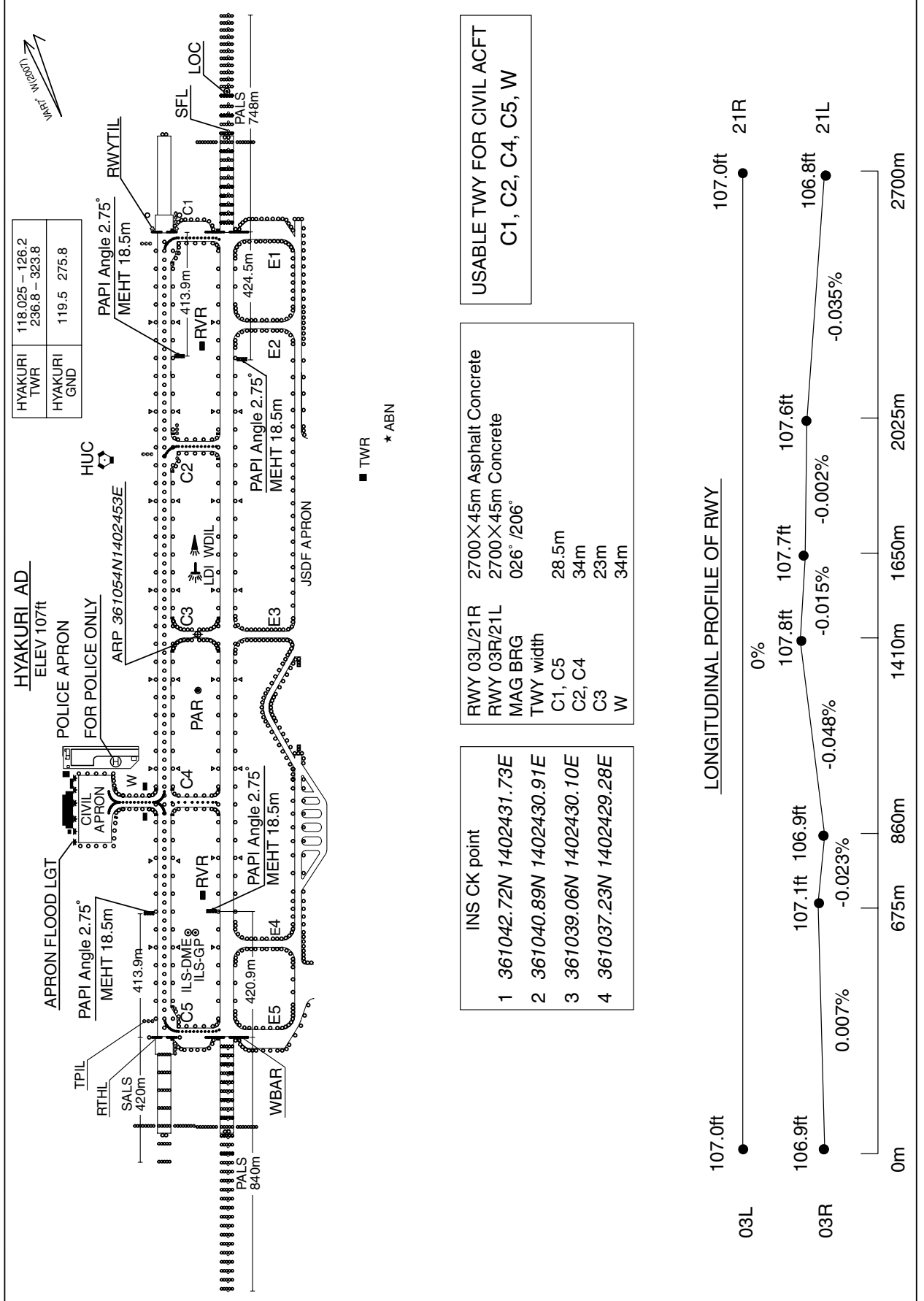


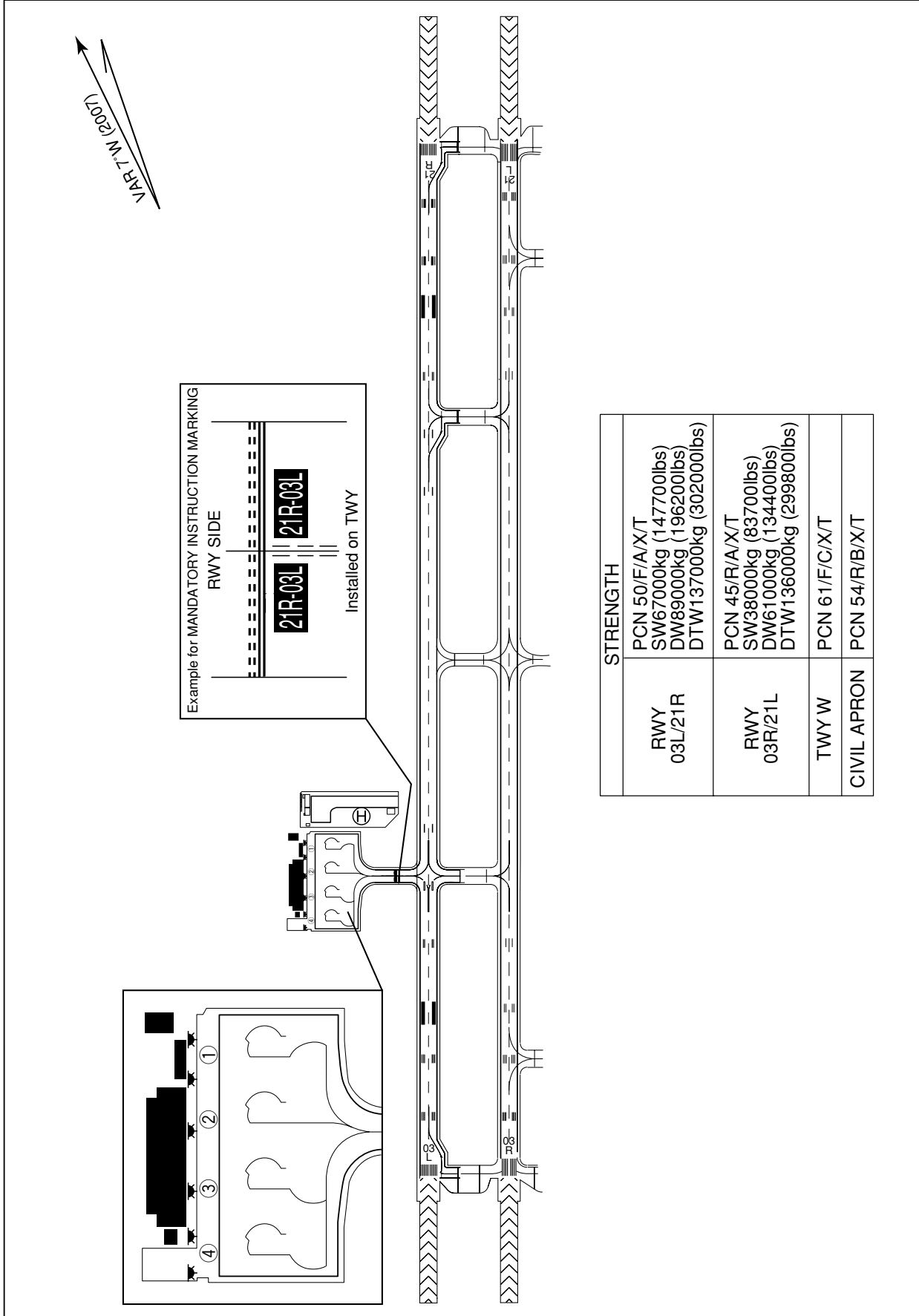
RJAH / HYAKURI

AD CHART



RJAH / HYAKURI

AD CHART



STANDARD DEPARTURE CHART - INSTRUMENT

RJAH / HYAKURI

SID and TRANSITION

OGITU TWO DEPARTURE

RWY 03R/03L : Climb RWY HDG to 600FT,...

RWY 21R/21L : Climb RWY HDG to 600FT, turn right HDG 062° to intercept and proceed...

...via HUC R032 to OGITU.

Cross HUC R032/5.5DME at or below 7000FT, cross OGITU at or below 10000FT.

Note This SID for VOR equipped aircraft only.

RWY03L : 4.1% climb gradient required up to 600FT.

OBST ALT 141FT located at 0.1NM 338° FM end of RWY03L.

IWAKI TRANSITION

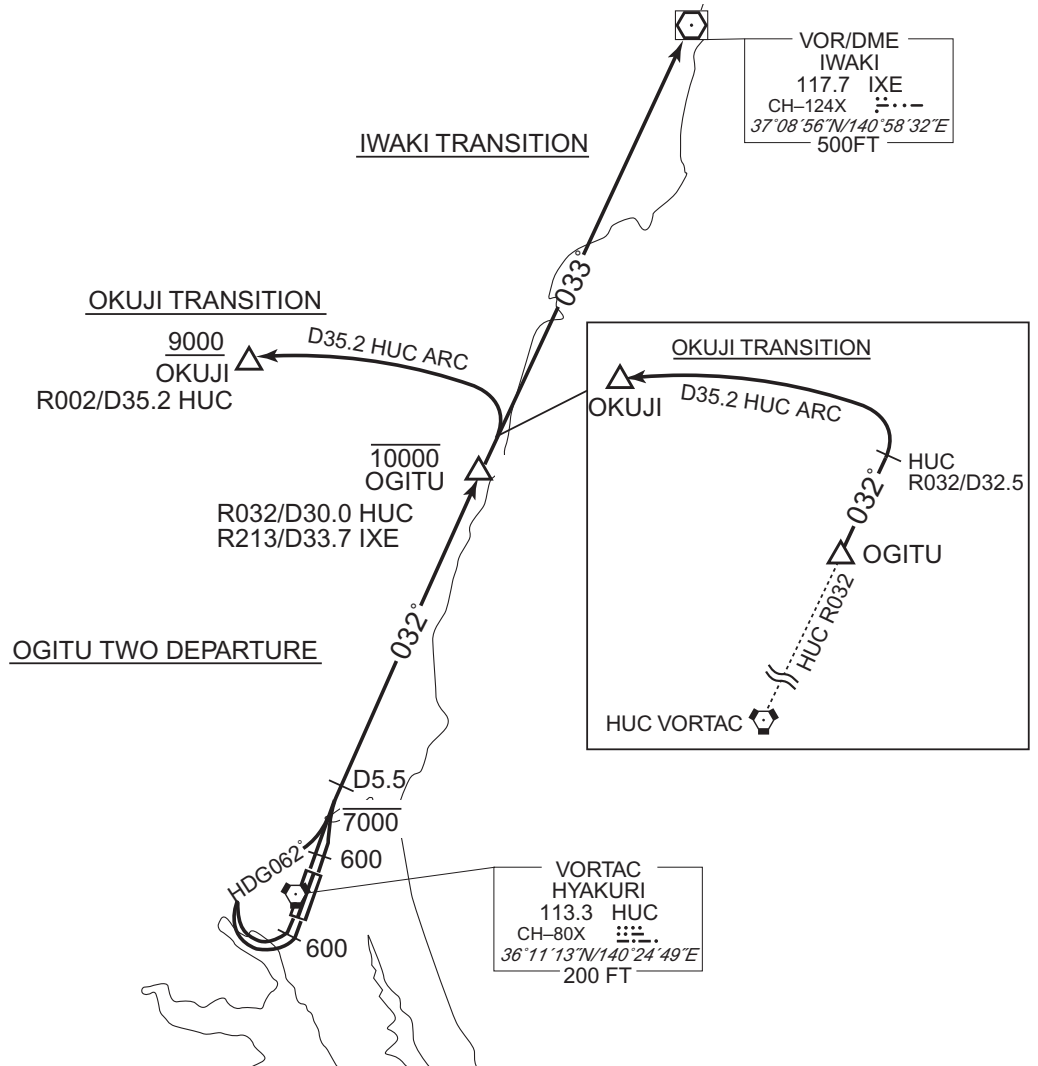
From over OGITU, proceed via IXE R213 to IXE VOR/DME.

OKUJI TRANSITION

From over OGITU, via HUC R032 to 32.5DME, turn left to intercept and proceed via HUC 35.2DME counterclockwise ARC to OKUJI.

Cross OKUJI at or above 9000FT.

CHANGE : Editorial(DIST FM HUC to OGITU).



STANDARD DEPARTURE CHART - INSTRUMENT

RJAH / HYAKURI

SID

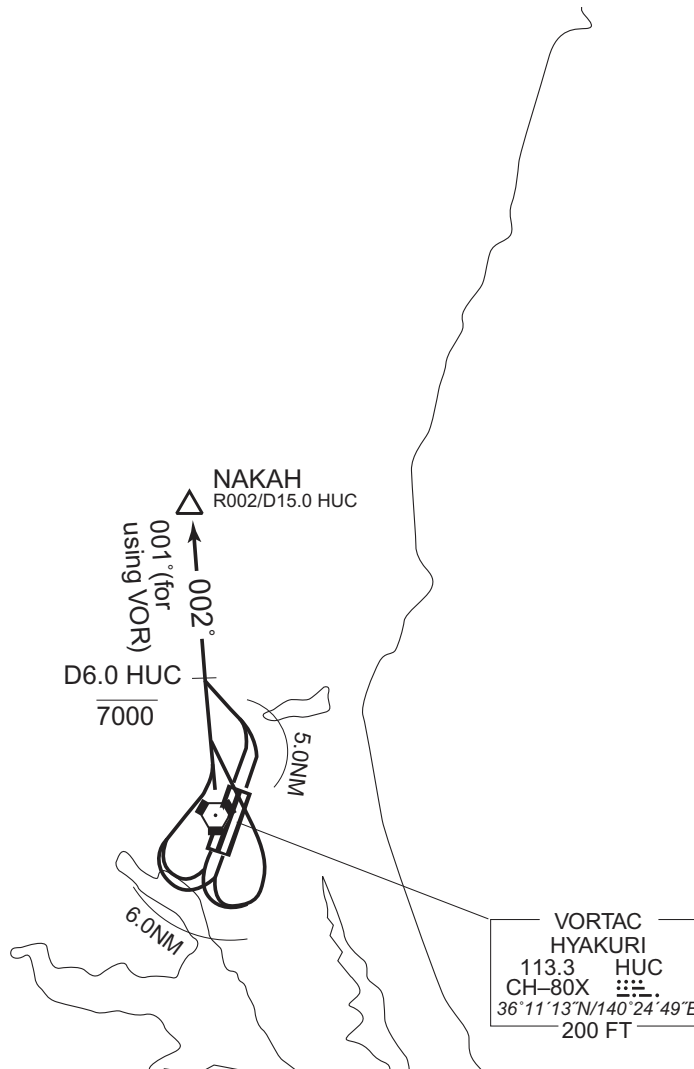
NAKAH FOUR DEPARTURE

RWY 03R/03L : Turn left within 5.0NM....

RWY 21R/21L : Turn right or left within 6.0NM....

....climb via HUC R002(R001 for using VOR) to NAKAH.

Cross HUC R002(R001 for using VOR) /6.0DME at or below 7000FT.



CHANGE : NIKKO TRANSITION abolished. NIKKO NDB(JD) abolished.

STANDARD DEPARTURE CHART - INSTRUMENT

RJAH / HYAKURI

SID and TRANSITION

HOKTA FIVE DEPARTURE

RWY 03R/03L : Climb via RWY HDG until 1.0NM from RWY end/HUC 1.4DME,  
turn right within 5.0NM....

RWY 21R/21L : Turn left within 6.0NM....

....climb via HUC R071 to HOKTA.

Cross HUC R071/19.3DME at or below 8000FT, cross HOKTA at or  
above 11000FT.

Note1 : Take off RWY 21R/21L, cross HUC R130 at or below 5000FT.

Note2 : This SID for TACAN equipped aircraft only.

HOKTA EAST FIVE DEPARTURE

RWY 03R/03L : Climb via RWY HDG until 1.0NM from RWY end/HUC 1.4DME,  
turn right within 5.0NM....

RWY 21R/21L : Turn left within 6.0NM....

....climb via HUC R091 to HUC 27.0DME, turn left via HUC 27.0DME  
counterclockwise ARC to HOKTA.

Cross HUC R091/23.0DME at or below 8000FT, cross HOKTA at or  
above 11000FT.

Note1 : Take off RWY 21R/21L, cross HUC R130 at or below 5000FT.

Note2 : This SID for TACAN equipped aircraft only.

MATSUSHIMA TRANSITION

From over HOKTA, via CVT R015 to CVT 59.0DME, MXT R195 to MXT TACAN.  
Cross CVT R015/59.0DME (MXT R195/103.0DME) at assigned altitude.

Note CVT R015/59.0DME (MXT R195/103.0DME) : MXT MRA 12000FT.

DAIGO TRANSITION

From over HOKTA, via CVT R015 to DAPPE, via GOT R117 to GOT TACAN.

CHANGE : Course FM DAPPE to GOT.

STANDARD DEPARTURE CHART - INSTRUMENT

RJAH / HYAKURI

SID and TRANSITION

|                        |            |
|------------------------|------------|
| TACAN                  | MATSUSHIMA |
| 1177                   | MXT        |
| CH-90X                 | ≡≡-        |
| 38°24'14"N/141°13'32"E |            |

※For TACAN equipped ACFT only.  
HOKTA FIVE DEPARTURE  
HOKTA EAST FIVE DEPARTURE

|                        |       |
|------------------------|-------|
| TACAN                  | DAIGO |
| 1187                   | GOT   |
| CH-100X                | ≡≡-   |
| 36°44'41"N/140°20'58"E |       |
| 1500FT                 |       |

Assigned ALT

DAIGO TRANSITION  
297°

MATSUSHIMA TRANSITION

MXT R195

D59.0 CVT  
D103.0 MXT  
(MRA 12000FT)

CVT R015

DAPPE  
R117/D30.2 GOT  
R015/D51.6 CVT

HOKTA  
11000

HOKTA FIVE DEPARTURE  
8000  
D19.3 HUC

1.0NM FM RWY end/  
D1.4 HUC

5.0NM

071°

D23.0 HUC  
8000

091°

HOKTA EAST FIVE DEPARTURE

CVT R015

|                        |         |
|------------------------|---------|
| VORTAC                 | HYAKURI |
| 113.3                  | HUC     |
| CH-80X                 | ≡≡.     |
| 36°11'13"N/140°24'49"E |         |
| 200 FT                 |         |

5000

6.0NM

R130

|                        |        |
|------------------------|--------|
| TACAN                  | CHOSHI |
| 1170                   | CVT    |
| CH-83X                 | ≡≡-    |
| 35°43'36"N/140°48'00"E |        |
| 200FT                  |        |

CHANGE : Course FM DAPPE to GOT.

STANDARD DEPARTURE CHART - INSTRUMENT

RJAH / HYAKURI

SID and TRANSITION

DAPPE ONE DEPARTURE

RWY 03R/03L : Climb via RWY HDG until 1.0NM from RWY end/HUC 1.4DME,  
turn right within 5.0NM....

RWY 21R/21L : Turn left within 6.0NM....  
....climb via HUC R055 to DAPPE.

Cross HUC R055/31.0DME at or below 10000FT.

Note1 : Take off RWY 21R/21L, cross HUC R130 at or below 5000FT.

Note2 : This SID for TACAN equipped aircraft only.

CHOSHI TRANSITION

From over DAPPE, via CVT R015 to CVT TACAN via ANKOH.

Cross ANKOH at or above FL170.

HYAKURI TRANSITION

From over DAPPE, via CVT R015 to ANKOH, via HUC R089 to HUC VORTAC.

Cross ANKOH at or above FL170.

CHANGE: ANKOH established

STANDARD DEPARTURE CHART - INSTRUMENT

RJAH / HYAKURI

SID and TRANSITION

※For TACAN equipped ACFT only.  
DAPPE ONE DEPARTURE

1.0NM FM RWY end/  
D1.4 HUC

VORTAC  
HYAKURI  
113.3 HUC  
CH-80X  
36°11'13"N/140°24'49"E  
200 FT

TACAN  
CHOSHI  
1170 CVT  
CH-83X  
35°43'36"N/140°48'00"E  
200FT

DAPPE ONE DEPARTURE

10000  
D31.0 HUC

5.0NM

5000

6.0NM

HYAKURI TRANSITION

CHOSHI TRANSITION

DAPPE  
R055/D34.7 HUC  
R015/D51.6 CVT

ANKOH  
FL170  
R015/D31.3 CVT  
R089/D23.2 HUC

269°

195°

055°

R130

CHANGE: ANKOH established

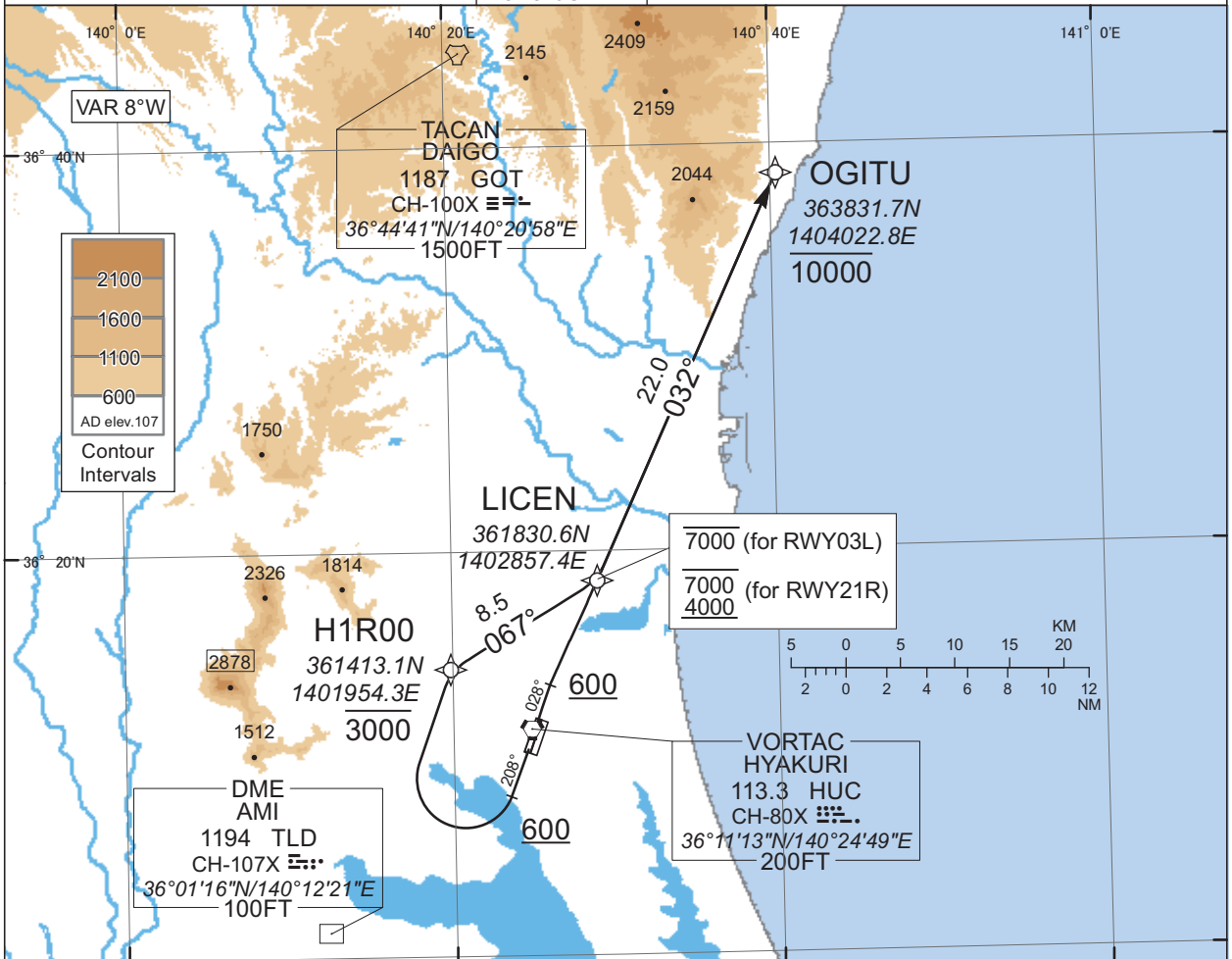


STANDARD DEPARTURE CHART - INSTRUMENT

RJAH / HYAKURI

RNAV SID

| HITAKA ONE DEPARTURE  |                       | RNAV1   |
|---|-----------------------|---|
| Note 1) DME/DME/IRU or GNSS required.<br>※The aircraft equipped with only DME/DME/IRU must be able to update its position without delay at the starting point of take-off roll.<br>2) RADAR service required. | Critical DME          | -   |
|   | DME GAP               | -   |
|   | Inappropriate Navaids | See AD1.1.6.10.3. Inappropriate NAVAIDs for RNAV1 |



CHANGE : Description of VAR and PROC name.

- RWY03R : (Not established)
- RWY03L : Climb on HDG028° at or above 600FT, direct to LICEN at or below 7000FT, to OGITU at or below 10000FT.
- RWY21L : (Not established)
- RWY21R : Climb on HDG208° at or above 600FT, turn right direct to H1R00 at or below 3000FT, to LICEN at 4000FT minimum, 7000FT maximum, to OGITU at or below 10000FT.

Note RWY03L : 4.1% climb gradient required up to 600FT.  
 OBST ALT 141FT located at 0.1NM 338° FM end of RWY03L.

STANDARD DEPARTURE CHART - INSTRUMENT

RJAH / HYAKURI

RNAV SID

HITAKA ONE DEPARTURE

RWY03L

| Serial Number | Path Descriptor | Waypoint Identifier | Fly Over | Course °M(°T)  | Magnetic Variation | Distance (NM) | Turn Direction | Altitude (FT) | Speed (KIAS) | Vertical Angle | Navigation Specification |
|---------------|-----------------|---------------------|----------|----------------|--------------------|---------------|----------------|---------------|--------------|----------------|--------------------------|
| 001           | VA              | -                   | -        | 028<br>(019.8) | -7.8               | -             | -              | +600          | -            | -              | RNAV1                    |
| 002           | DF              | LICEN               | -        | -              | -7.8               | -             | -              | -7000         | -            | -              | RNAV1                    |
| 003           | TF              | OGITU               | -        | 032<br>(024.6) | -7.8               | 22.0          | -              | -10000        | -            | -              | RNAV1                    |

RWY21R

| Serial Number | Path Descriptor | Waypoint Identifier | Fly Over | Course °M(°T)  | Magnetic Variation | Distance (NM) | Turn Direction | Altitude (FT)  | Speed (KIAS) | Vertical Angle | Navigation Specification |
|---------------|-----------------|---------------------|----------|----------------|--------------------|---------------|----------------|----------------|--------------|----------------|--------------------------|
| 001           | VA              | -                   | -        | 208<br>(199.8) | -7.8               | -             | -              | +600           | -            | -              | RNAV1                    |
| 002           | DF              | H1R00               | -        | -              | -7.8               | -             | R              | -3000          | -            | -              | RNAV1                    |
| 003           | TF              | LICEN               | -        | 067<br>(059.5) | -7.8               | 8.5           | -              | -7000<br>+4000 | -            | -              | RNAV1                    |
| 004           | TF              | OGITU               | -        | 032<br>(024.6) | -7.8               | 22.0          | -              | -10000         | -            | -              | RNAV1                    |

CHANGE : New PROC.

STANDARD ARRIVAL CHART -INSTRUMENT

RJAH / HYAKURI

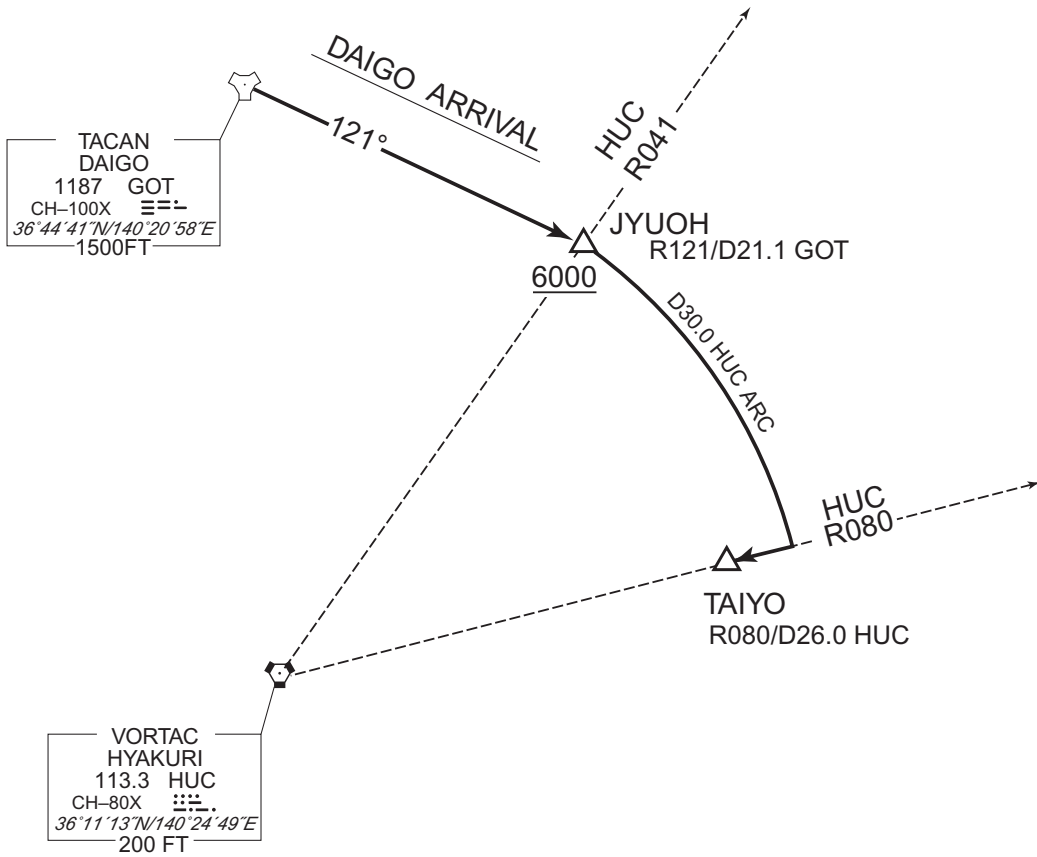
STAR

DAIGO ARRIVAL

From over GOT TACAN, proceed via GOT R121 to JYUOH,  
turn right via HUC 30.0DME clockwise ARC to intercept and  
proceed via HUC R080 to TAIYO.

Cross JYUOH at or above 6000FT.

CHANGE : Course, DIST FM GOT to JYUOH.



STANDARD ARRIVAL CHART -INSTRUMENT

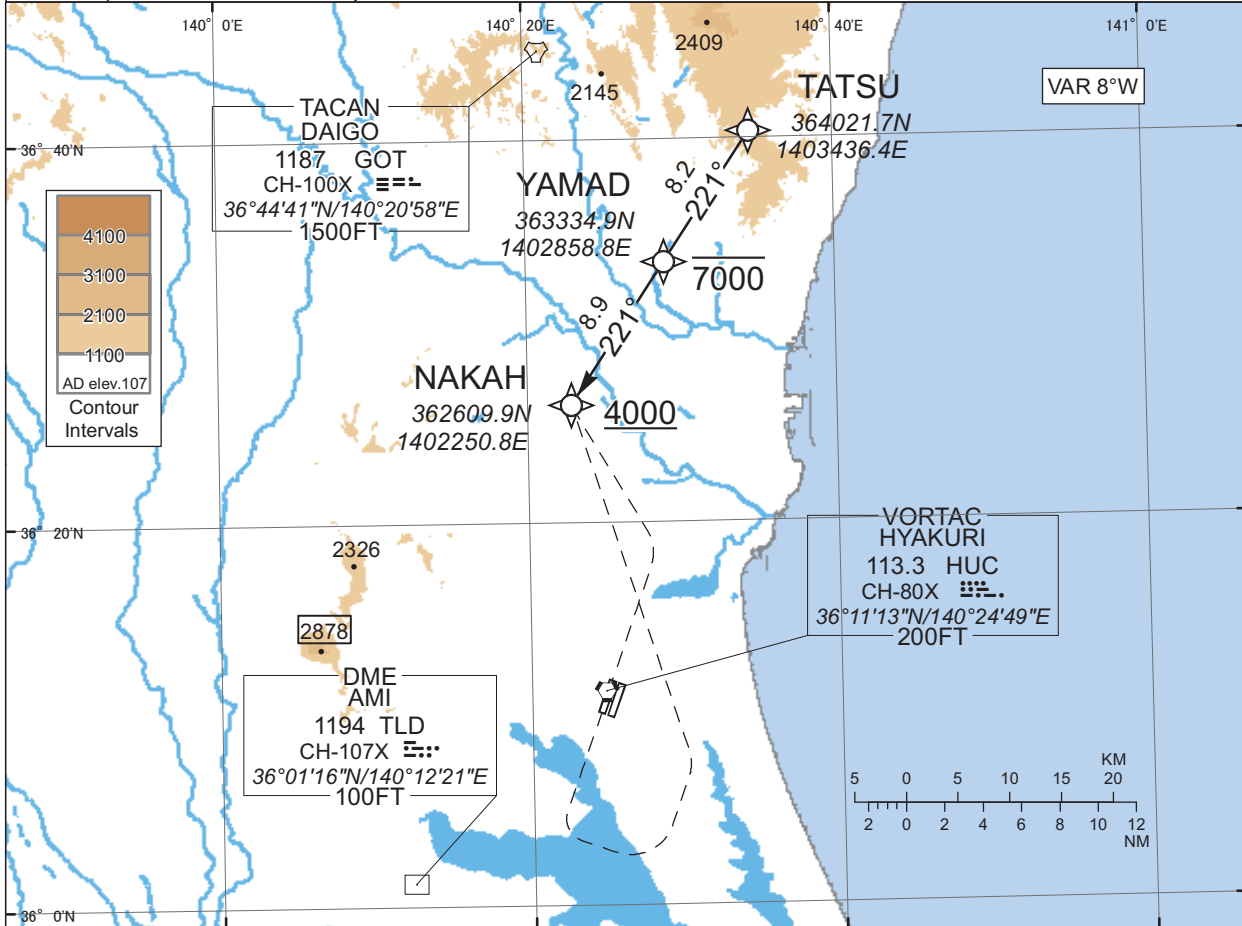
RJAH / HYAKURI

RNAV STAR

TATSU ARRIVAL

RNAV1

Note 1) DME/DME/IRU or GNSS required.  
2) RADAR service required.



From TATSU, to YAMAD at or below 7000FT, to NAKAH at or above 4000FT.

|                        |   |
|------------------------|---|
| Critical DME           | -   |
| DME GAP                | -   |
| Inappropriate Nav aids | See AD1.1.6.10.3. Inappropriate NAVAIDs for RNAV1 |

CHANGE : Description of VAR and PROC name.

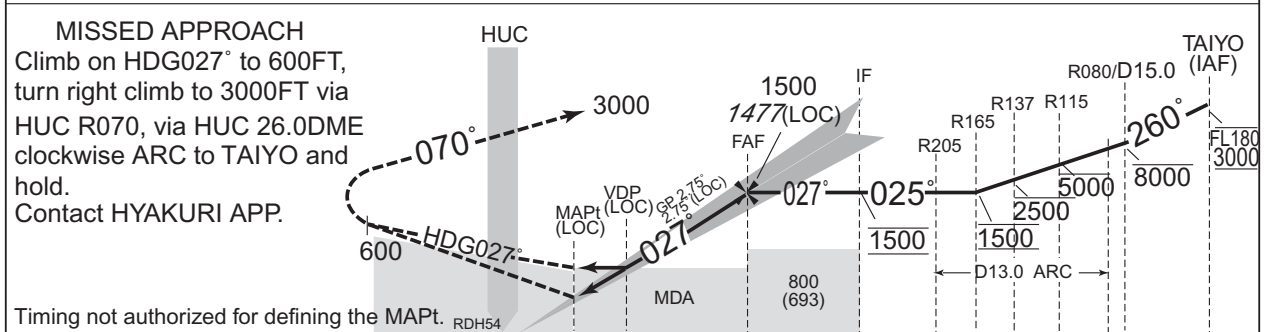
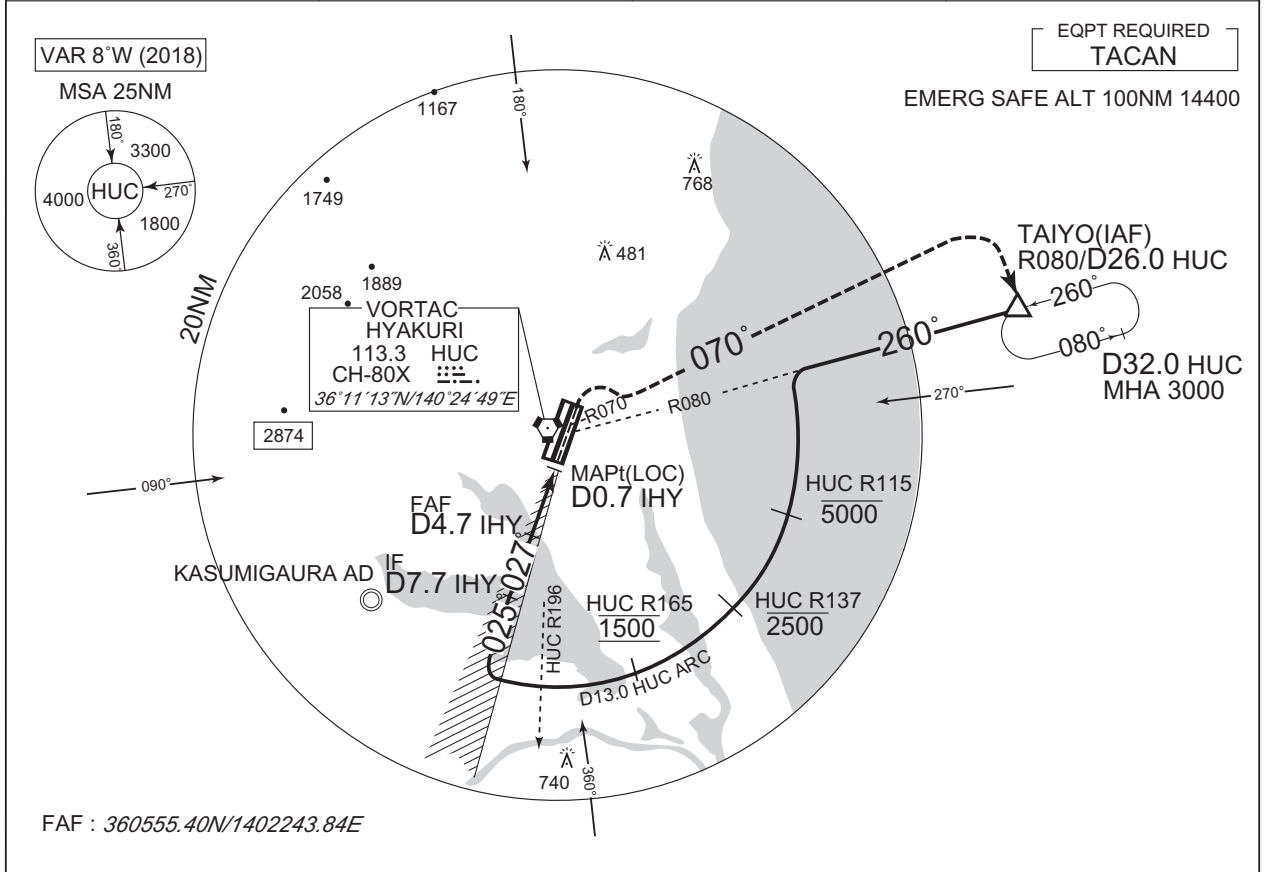
| Serial Number | Path Descriptor | Waypoint Identifier | Fly Over | Course °M(°T) | Magnetic Variation | Distance (NM) | Turn Direction | Altitude (FT) | Speed (KIAS) | Vertical Angle | Navigation Specification |
|---------------|-----------------|---------------------|----------|---------------|--------------------|---------------|----------------|---------------|--------------|----------------|--------------------------|
| 001           | IF              | TATSU               | -        | -             | -7.8               | -             | -              | -             | -            | -              | RNAV1                    |
| 002           | TF              | YAMAD               | -        | 221 (213.7)   | -7.8               | 8.2           | -              | -7000         | -            | -              | RNAV1                    |
| 003           | TF              | NAKAH               | -        | 221 (213.6)   | -7.8               | 8.9           | -              | +4000         | -            | -              | RNAV1                    |

INSTRUMENT APPROACH CHART

RJAH / HYAKURI

ILS Z or LOC Z RWY03R

|   |   |   |            |
|---|---|---|------------|
| HYAKURI APP<br>120.1 - 123.875<br>305.7 - 362.3 | ILS - LOC<br>109.3 IHY --- --<br>ILS-GP 332.0<br>ILS-DME CH-30X | HYAKURI TWR<br>118.025- 126.2<br>236.8 - 323.8<br>119.5G - 275.8G | RADAR AVBL |
|---|---|---|------------|



|            |     |     |     |     |     |
|------------|-----|-----|-----|-----|-----|
| DME to IHY | 0.7 | 1.4 | 4.7 | 7.7 |     |
| NM to THR  | 0   | 0.5 | 1.2 | 4.5 | 7.5 |

CHANGE : MDA(H) for LOC.

| MINIMA |           | THR elev. 107 |           | AD elev. 107 |           |      |
|--------|-----------|---------------|-----------|--------------|-----------|------|
| CAT    | CAT I     |               | LOC       |              | CIRCLING  |      |
|        | DA(H)     | RVR/CMV       | MDA(H)    | RVR/CMV      | MDA(H)    | VIS  |
| A      | 307 (200) | 750           | 520 (413) | 900          | 580 (473) | 1600 |
| B      |           |               |           | 1000         |           |      |
| C      |           |               |           | 1400         | 660 (553) | 2400 |
| D      |           |               |           |              |           | 3200 |

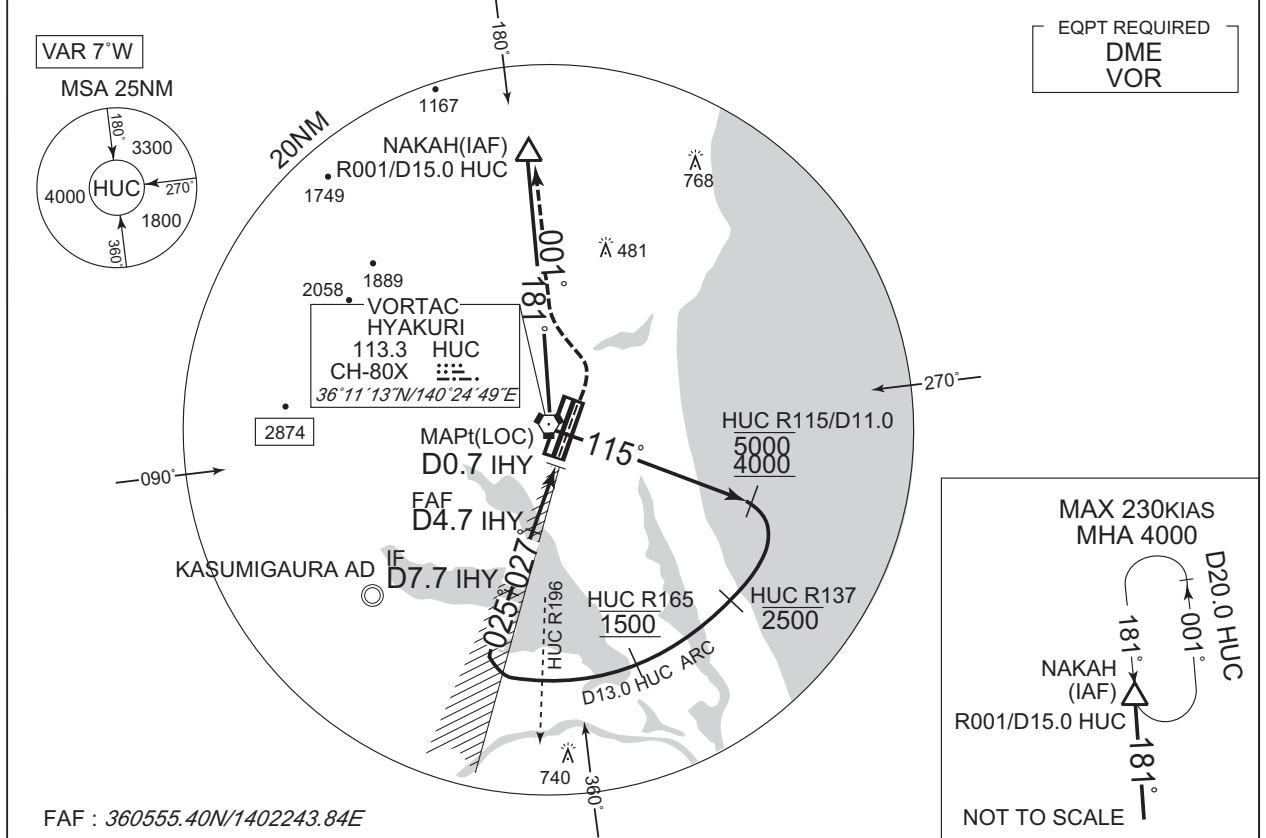


INSTRUMENT APPROACH CHART

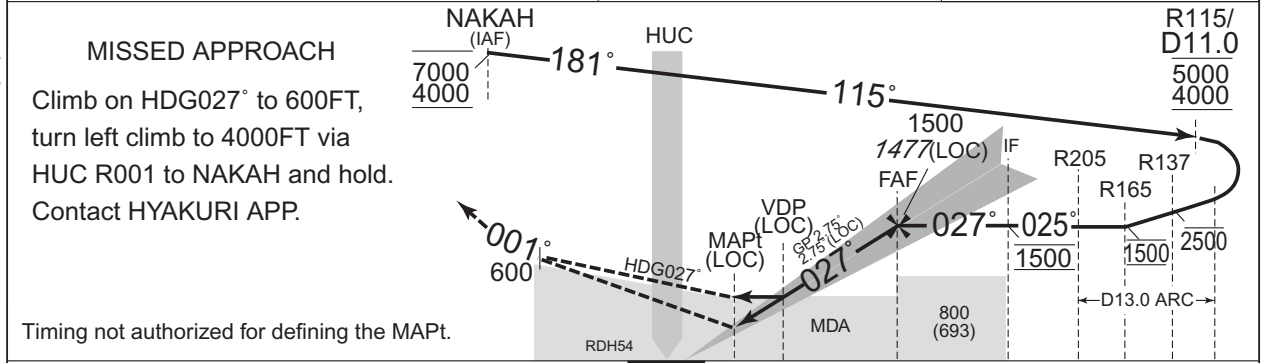
RJAH / HYAKURI

ILS X or LOC X RWY03R

|   |  |   |            |
|---|--|---|------------|
| HYAKURI APP<br>120.1 - 123.875<br>305.7 - 362.3 | ILS - LOC<br>109.3 IHY<br>ILS-GP 332.0<br>ILS-DME CH-30X | HYAKURI TWR<br>118.025- 126.2<br>236.8 - 323.8<br>119.5G - 275.8G | RADAR AVBL |
|---|--|---|------------|



CHANGE : DME to IHY at VDP. NM to THR at VDP. MDA(H) for LOC.



|  |            |     |     |     |     |     |
|--|------------|-----|-----|-----|-----|-----|
|  | DME to IHY | 0.7 | 1.5 | 4.7 | 7.7 |     |
|  | NM to THR  | 0   | 0.5 | 1.3 | 4.5 | 7.5 |

|        |           |               |           |              |           |      |
|--------|-----------|---------------|-----------|--------------|-----------|------|
| MINIMA |           | THR elev. 107 |           | AD elev. 107 |           |      |
| CAT    | CAT I     |               | LOC       |              | CIRCLING  |      |
|        | DA(H)     | RVR/CMV       | MDA(H)    | RVR/CMV      | MDA(H)    | VIS  |
| A      | 307 (200) | 750           | 510 (403) | 900          | 580 (473) | 1600 |
| B      |           |               |           | 1000         |           |      |
| C      |           |               |           | 1400         |           |      |
| D      |           |               |           | 1400         |           |      |



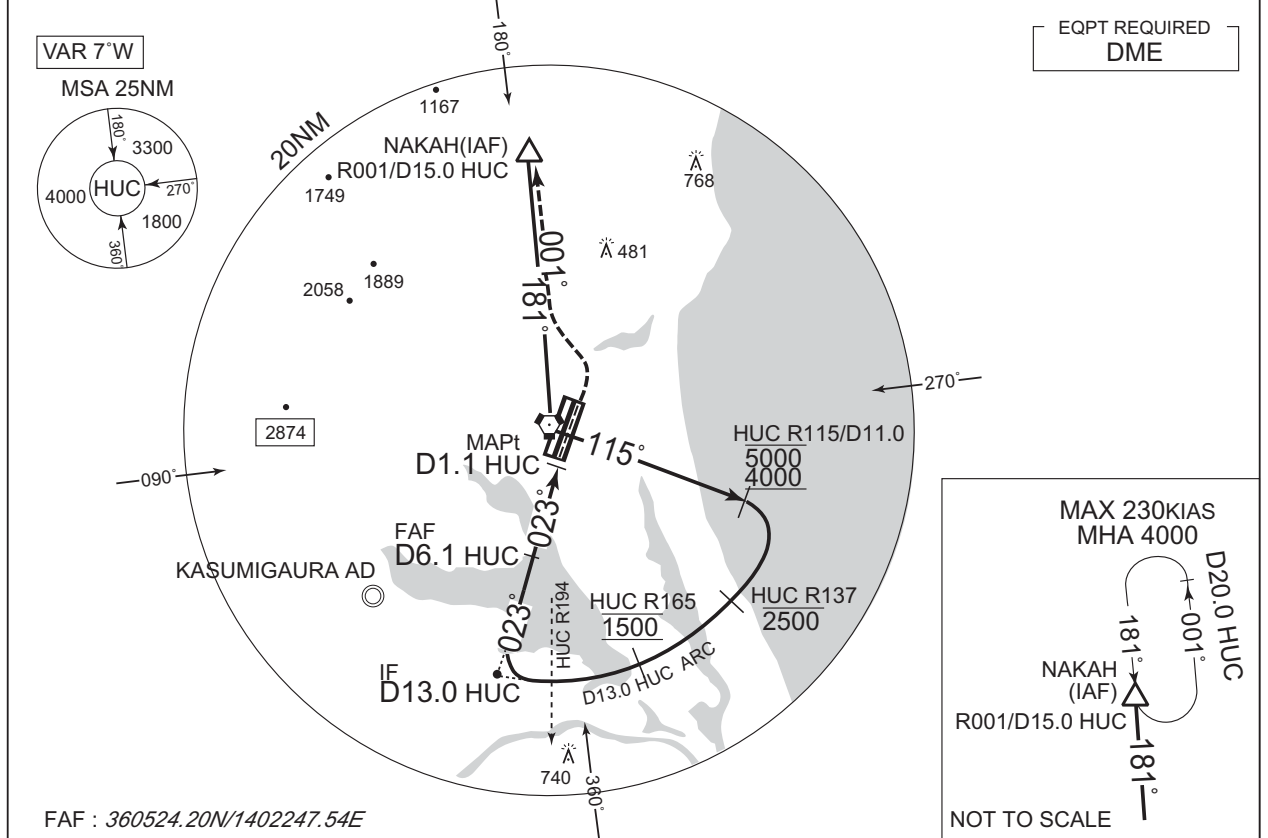


INSTRUMENT APPROACH CHART

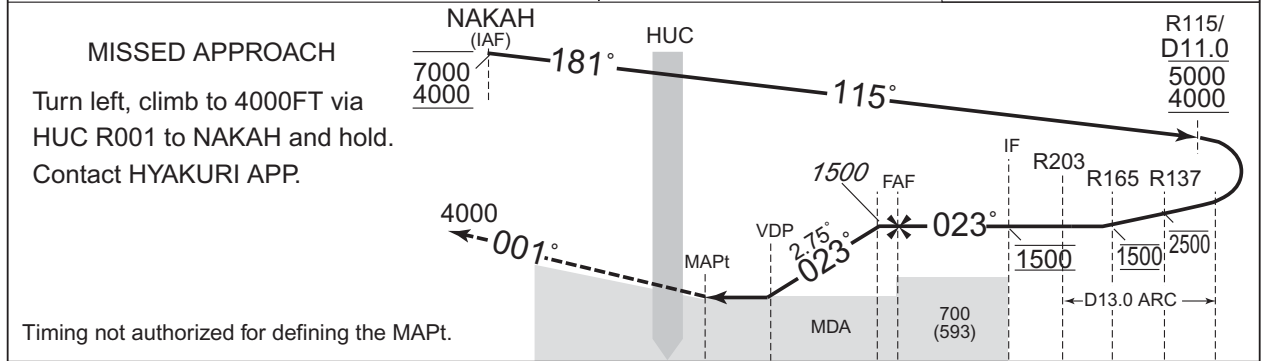
RJAH / HYAKURI

VOR RWY03R

|   |   |   |            |
|---|---|---|------------|
| HYAKURI APP<br>120.1 - 123.875<br>305.7 - 362.3 | HYAKURI VORTAC<br>113.3 HUC<br>CH-80X<br>36°11'13"N/140°24'49"E | HYAKURI TWR<br>118.025- 126.2<br>236.8 - 323.8<br>119.5G - 275.8G | RADAR AVBL |
|---|---|---|------------|



FAF : 360524.20N/1402247.54E



Timing not authorized for defining the MAPt.

|            |     |     |     |     |      |
|------------|-----|-----|-----|-----|------|
| DME to HUC | 1.1 | 2.4 | 5.7 | 6.1 | 13.0 |
| NM to THR  | 0   | 1.3 | 4.6 | 5.0 | 11.9 |

CHANGE : Description of VAR.

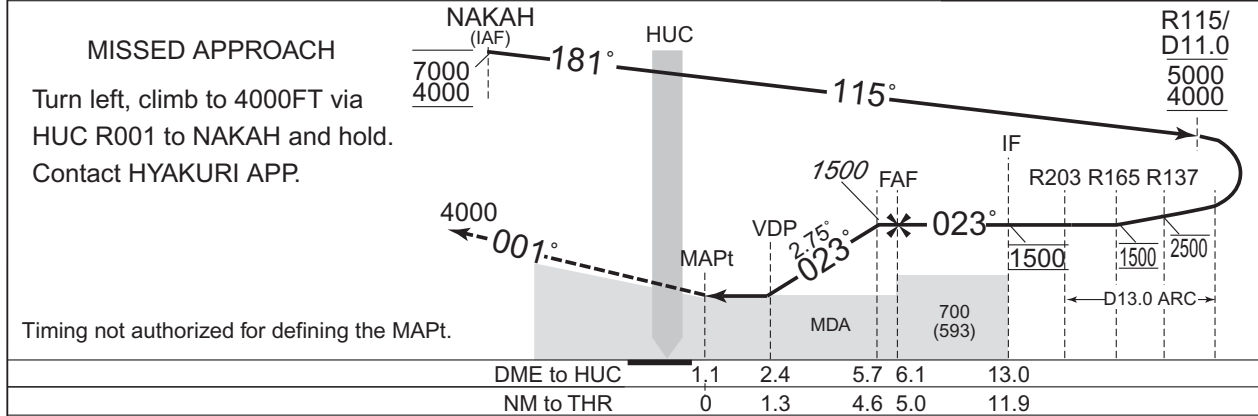
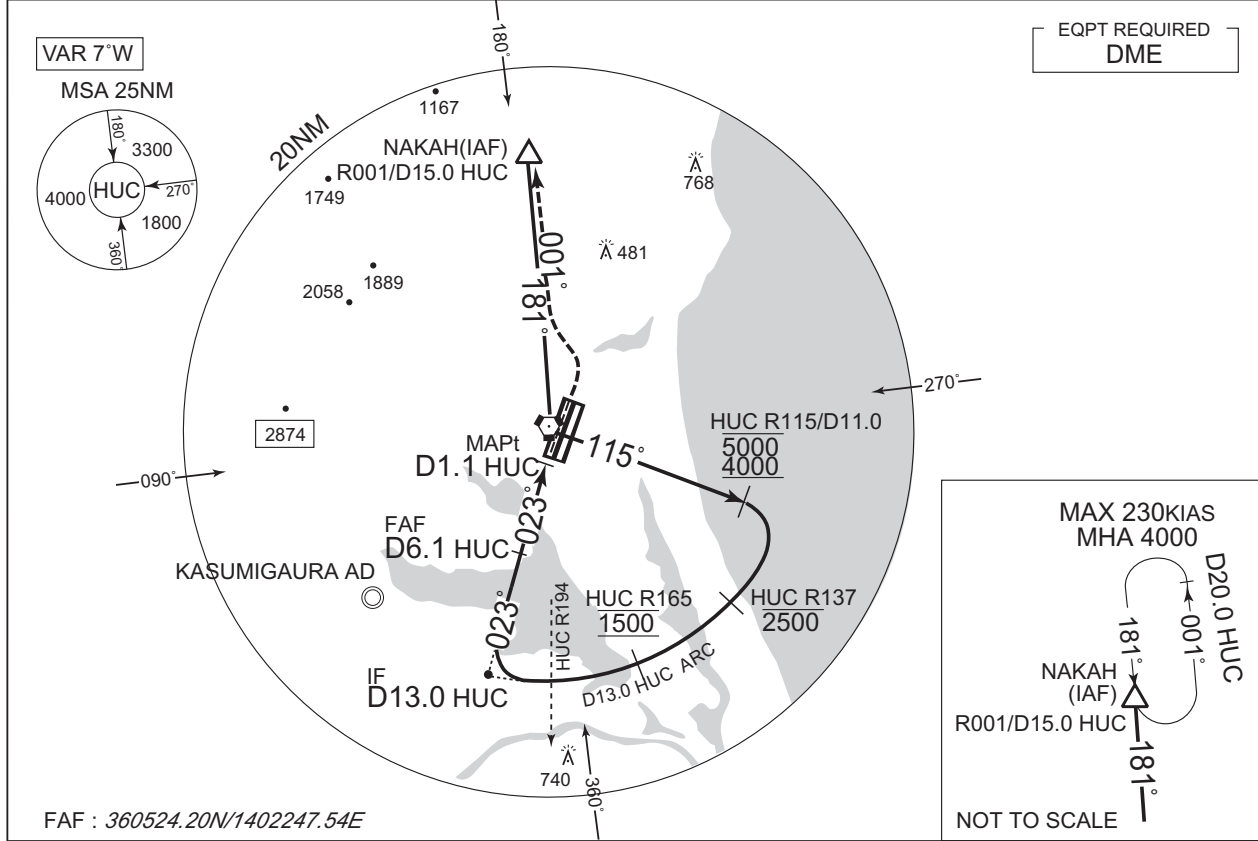
| MINIMA |           | THR elev. 107 |           | AD elev. 107 |      |
|--------|-----------|---------------|-----------|--------------|------|
| CAT    |           |               | CIRCLING  |              | VIS  |
|        | MDA(H)    | RVR/CMV       | MDA(H)    |              |      |
| A      | 520 (413) | 900           | 580 (473) | 1600         |      |
| B      |           | 1000          |           | 660 (553)    | 2400 |
| C      |           |               | 1400      |              | 3200 |
| D      |           |               |           |              |      |

INSTRUMENT APPROACH CHART

RJAH / HYAKURI

VOR RWY03L

|   |   |   |            |
|---|---|---|------------|
| HYAKURI APP<br>120.1 - 123.875<br>305.7 - 362.3 | HYAKURI VORTAC<br>113.3 HUC<br>CH-80X<br>36°11'13"N/140°24'49"E | HYAKURI TWR<br>118.025- 126.2<br>236.8 - 323.8<br>119.5G - 275.8G | RADAR AVBL |
|---|---|---|------------|



CHANGE : Description of VAR.

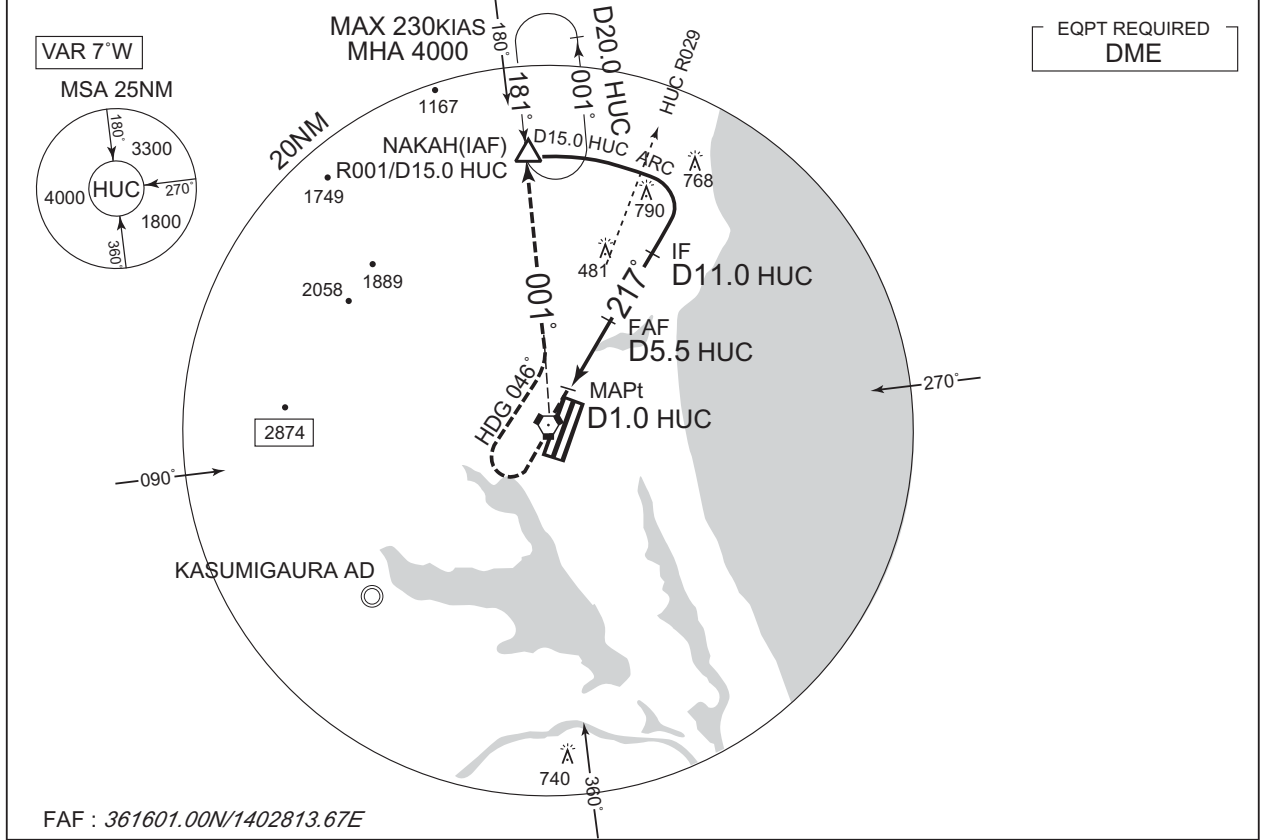
|        |           |               |              |      |           |
|--------|-----------|---------------|--------------|------|-----------|
| MINIMA |           | THR elev. 107 | AD elev. 107 |      |           |
| CAT    |           |               | CIRCLING     |      |           |
|        | MDA(H)    | RVR/CMV       | MDA(H)       | VIS  |           |
| A      | 520 (413) | 1200          | 580 (473)    | 1600 |           |
| B      |           | 1300          |              |      |           |
| C      |           | 1400          |              |      | 2400      |
| D      |           | 1600          |              |      | 660 (553) |

INSTRUMENT APPROACH CHART

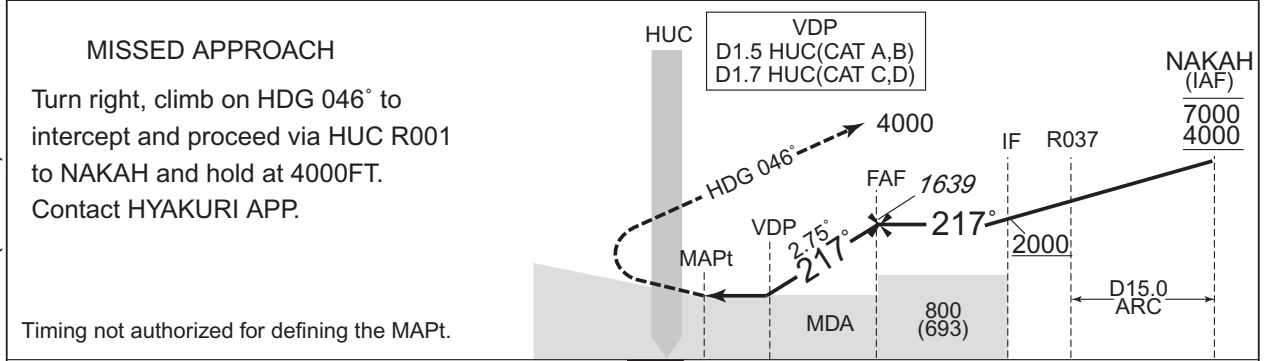
RJAH / HYAKURI

VOR RWY21L

|   |   |   |            |
|---|---|---|------------|
| HYAKURI APP<br>120.1 - 123.875<br>305.7 - 362.3 | HYAKURI VORTAC<br>113.3 HUC<br>CH-80X<br>36°11'13"N/140°24'49"E | HYAKURI TWR<br>118.025- 126.2<br>236.8 - 323.8<br>119.5G - 275.8G | RADAR AVBL |
|---|---|---|------------|



CHANGE : Description of VAR. OBST added(790FT).



|            |       |     |      |
|------------|-------|-----|------|
| DME to HUC | 1.0   | 5.5 | 11.0 |
| NM to THR  | 0 0.6 | 5.1 | 10.6 |

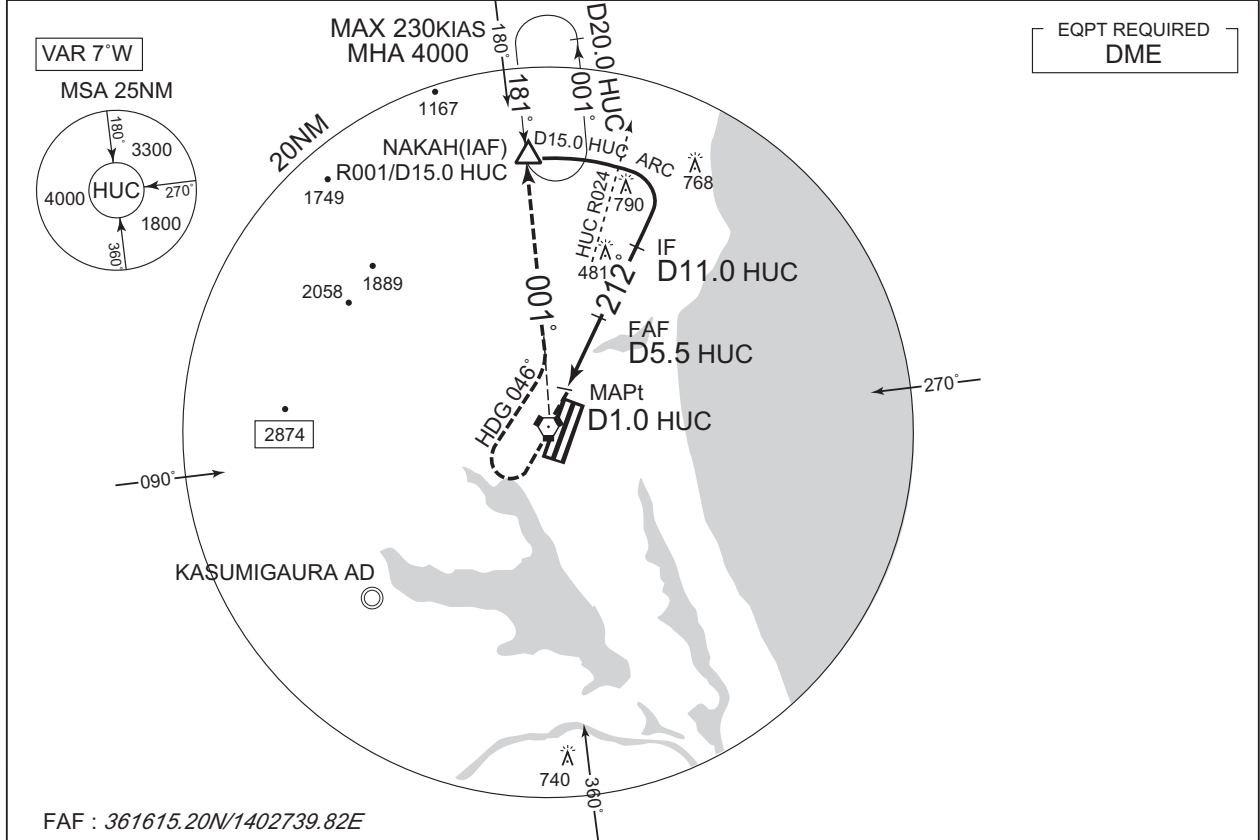
| MINIMA |           | THR elev. 107 | AD elev. 107 |      |
|--------|-----------|---------------|--------------|------|
| CAT    | MDA(H)    | RVR/CMV       | CIRCLING     |      |
|        |           |               | MDA(H)       | VIS  |
| A      | 480 (373) | 900           | 580 (473)    | 1600 |
| B      | 490 (383) |               |              | 2400 |
| C      | 520 (413) | 1000          | 660 (553)    | 3200 |
| D      | 540 (433) |               |              |      |

INSTRUMENT APPROACH CHART

RJAH / HYAKURI

VOR RWY21R

|   |   |   |            |
|---|---|---|------------|
| HYAKURI APP<br>120.1 - 123.875<br>305.7 - 362.3 | HYAKURI VORTAC<br>113.3 HUC<br>CH-80X<br>36°11'13"N/140°24'49"E | HYAKURI TWR<br>118.025- 126.2<br>236.8 - 323.8<br>119.5G - 275.8G | RADAR AVBL |
|---|---|---|------------|

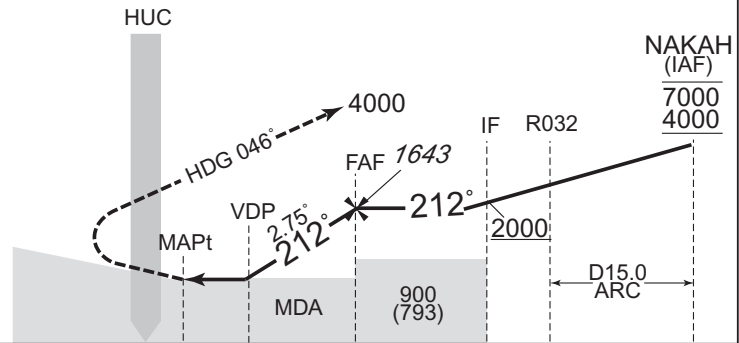


FAF : 361615.20N/1402739.82E

MISSED APPROACH

Turn right, climb on HDG 046° to intercept and proceed via HUC R001 to NAKAH and hold at 4000FT. Contact HYAKURI APP.

Timing not authorized for defining the MAPt.



|            |     |     |     |      |
|------------|-----|-----|-----|------|
| DME to HUC | 1.0 | 1.5 | 5.5 | 11.0 |
| NM to THR  | 0.6 | 1.1 | 5.1 | 10.6 |

CHANGE : Description of VAR. OBST added(790FT).

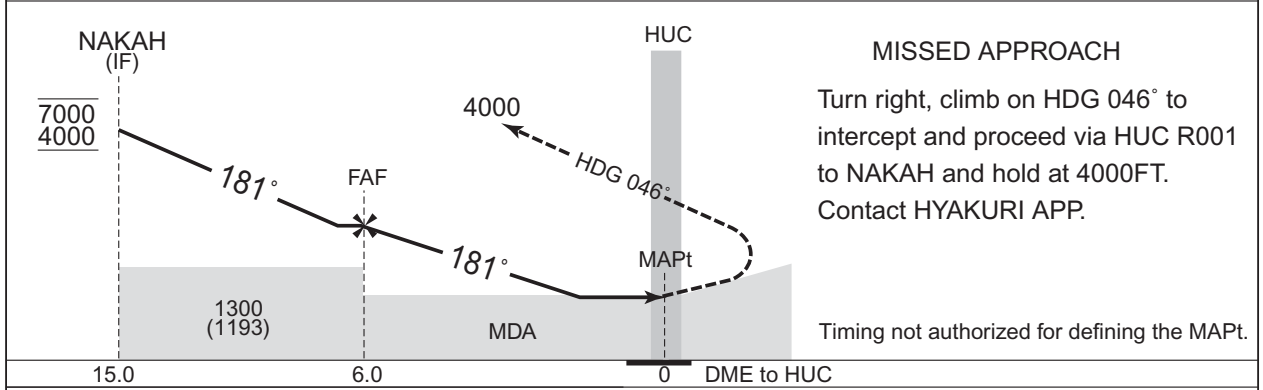
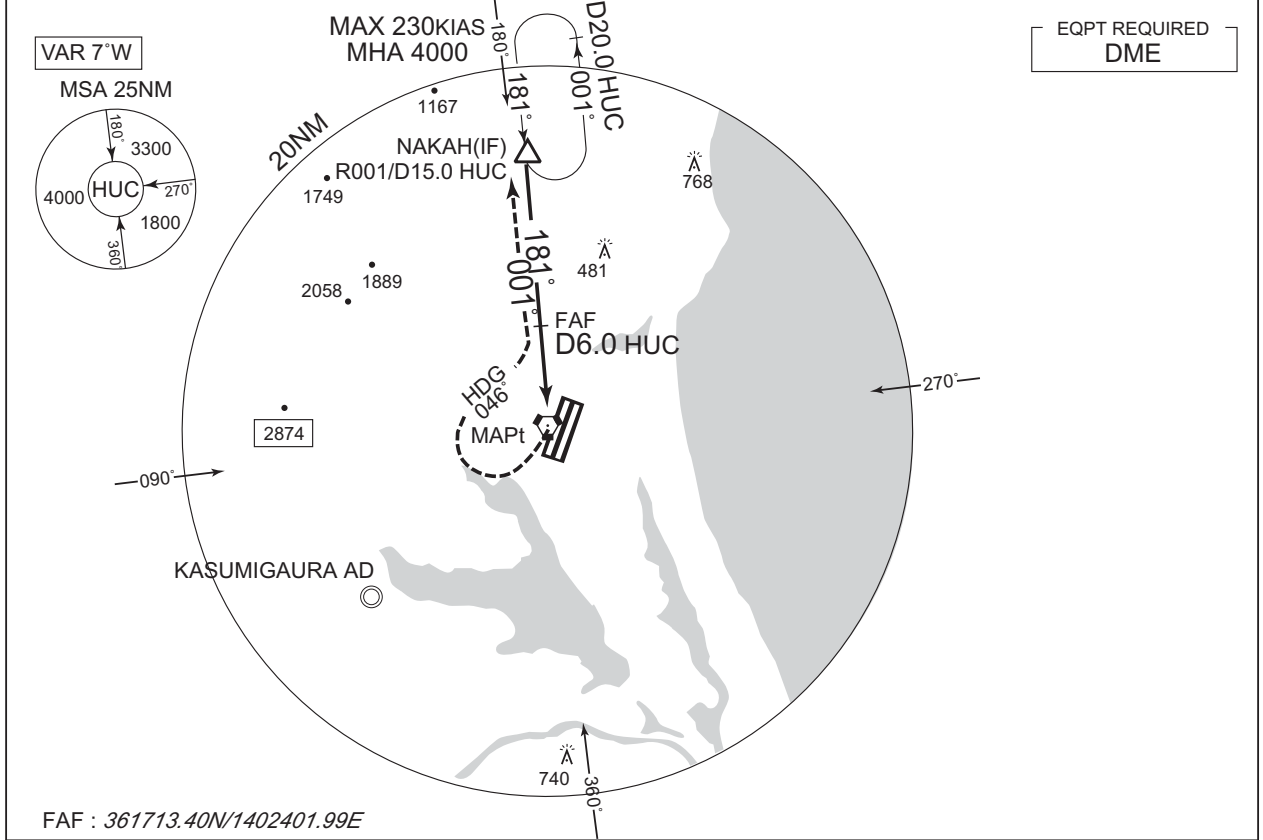
| MINIMA |           | THR elev. 107 | AD elev. 107 |      |
|--------|-----------|---------------|--------------|------|
| CAT    | MDA(H)    | RVR/CMV       | CIRCLING     |      |
|        |           |               | MDA(H)       | VIS  |
| A      | 470 (363) | 1500          | 580 (473)    | 1600 |
| B      |           |               |              | 2400 |
| C      |           |               |              | 2000 |
| D      |           |               |              | 3200 |

INSTRUMENT APPROACH CHART

RJAH / HYAKURI

VOR B

|   |   |   |            |
|---|---|---|------------|
| HYAKURI APP<br>120.1 - 123.875<br>305.7 - 362.3 | HYAKURI VORTAC<br>113.3 HUC<br>CH-80X<br>36°11'13"N/140°24'49"E | HYAKURI TWR<br>118.025- 126.2<br>236.8 - 323.8<br>119.5G - 275.8G | RADAR AVBL |
|---|---|---|------------|



CHANGE : Description of VAR.

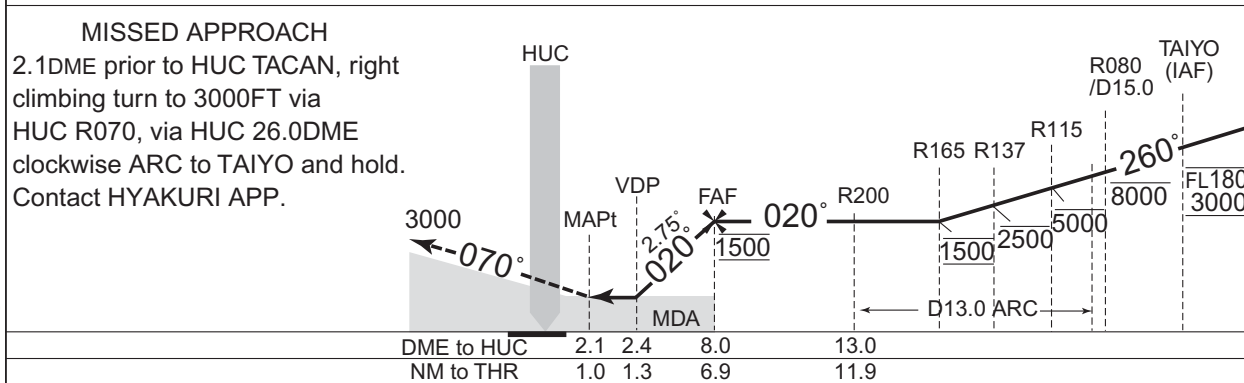
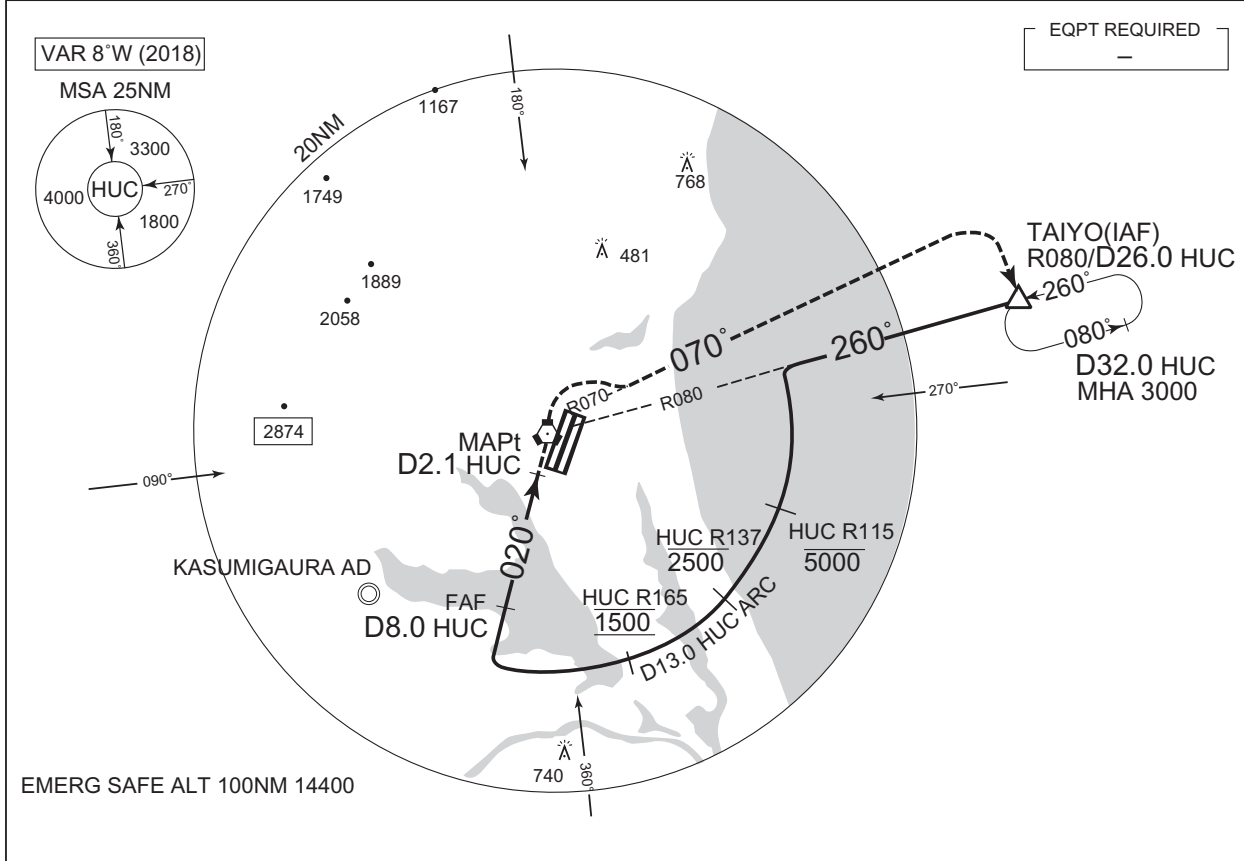
|        |           |              |
|--------|-----------|--------------|
| MINIMA |           | AD elev. 107 |
| CAT    | CIRCLING  |              |
|        | MDA(H)    | VIS          |
| A      | 580 (473) | 1600         |
| B      |           | 2400         |
| C      | 660 (553) | 3200         |
| D      |           |              |

INSTRUMENT APPROACH CHART

RJAH / HYAKURI

TACAN Z RWY03R

|   |  |   |            |
|---|--|---|------------|
| HYAKURI APP<br>120.1 - 123.875<br>305.7 - 362.3 | HYAKURI VORTAC<br>113.3 HUC 3300<br>CH-80X<br>36°11'13"N/140°24'49"E | HYAKURI TWR<br>118.025- 126.2<br>236.8 - 323.8<br>119.5G - 275.8G | RADAR AVBL |
|---|--|---|------------|



CHANGE : DME to HUC at VDP . NM to THR at VDP .

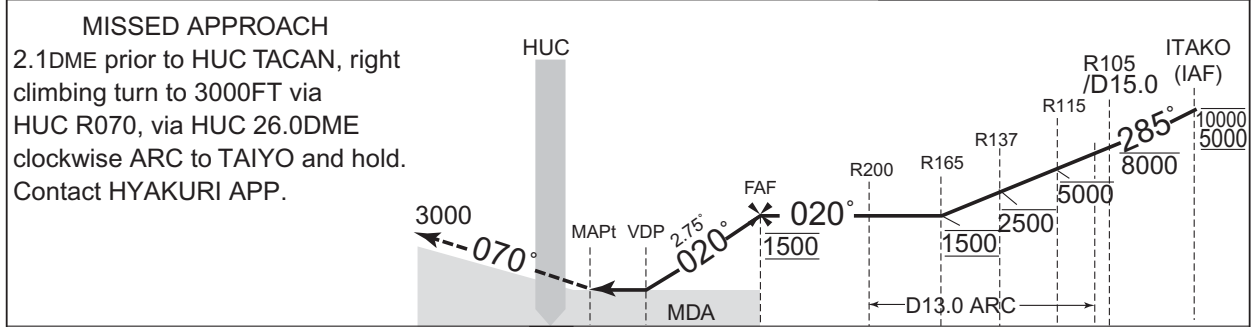
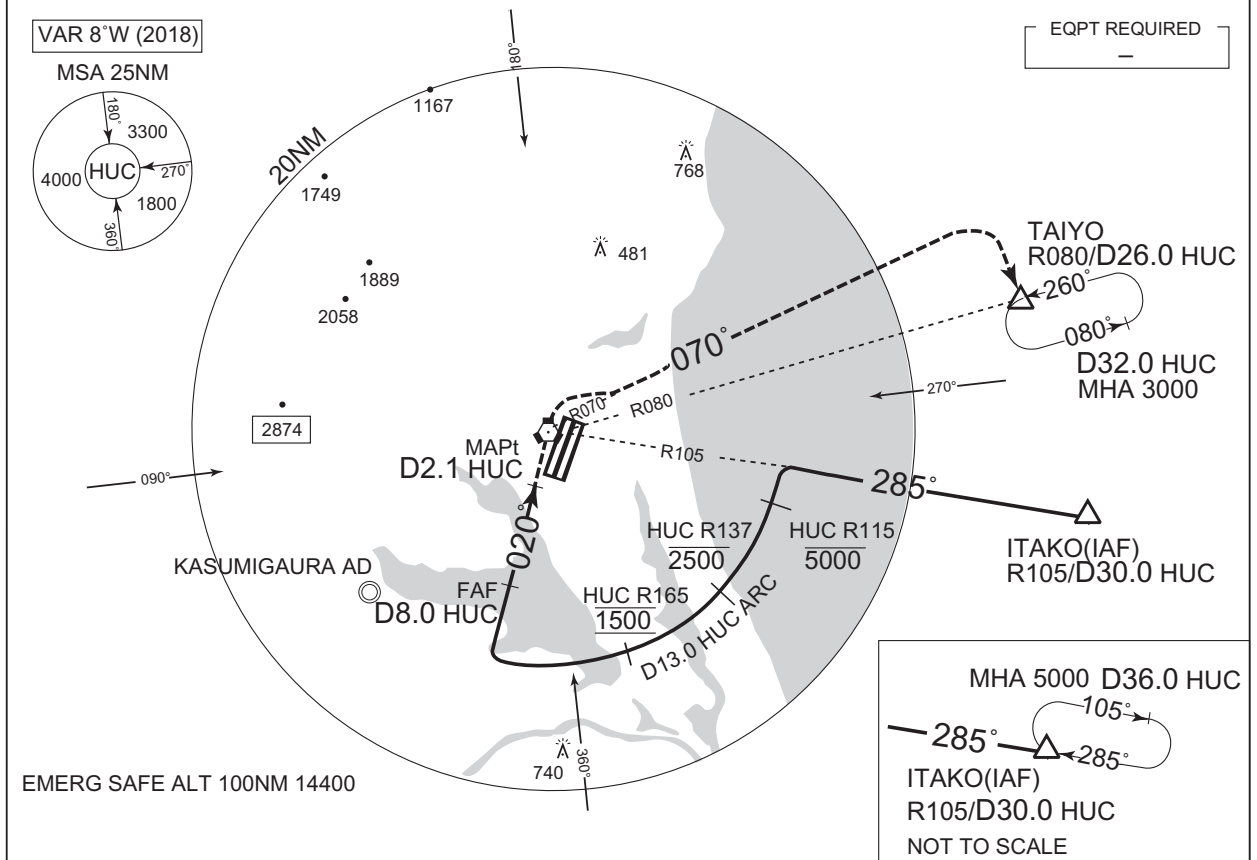
|        |           |               |                |
|--------|-----------|---------------|----------------|
| MINIMA |           | THR elev. 107 | AD elev. 107   |
| CAT    | CIRCLING  |               |                |
|        | MDA(H)    | RVR/CMV       | MDA(H) VIS     |
| A      | 540 (433) | 1000          | 580 (473) 1600 |
| B      |           | 1200          | 2400           |
| C      |           | 1600          | 660 (553) 3200 |

INSTRUMENT APPROACH CHART

RJAH / HYAKURI

TACAN Y RWY03R

|   |   |   |            |
|---|---|---|------------|
| HYAKURI APP<br>120.1 - 123.875<br>305.7 - 362.3 | HYAKURI VORTAC<br>113.3 HUC $\text{---}\cdot\text{---}$<br>CH-80X<br>36°11'13"N/140°24'49"E | HYAKURI TWR<br>118.025- 126.2<br>236.8 - 323.8<br>119.5G - 275.8G | RADAR AVBL |
|---|---|---|------------|



|            |     |     |     |      |
|------------|-----|-----|-----|------|
| DME to HUC | 2.1 | 2.4 | 8.0 | 13.0 |
| NM to THR  | 1.0 | 1.3 | 6.9 | 11.9 |

|        |           |               |              |      |
|--------|-----------|---------------|--------------|------|
| MINIMA |           | THR elev. 107 | AD elev. 107 |      |
| CAT    |           |               | CIRCLING     |      |
|        | MDA(H)    | RVR/CMV       | MDA(H)       | VIS  |
| A      | 540 (433) | 1000          | 580 (473)    | 1600 |
| B      |           | 1200          |              |      |
| C      |           | 1600          | 660 (553)    | 2400 |
| D      |           |               |              | 3200 |

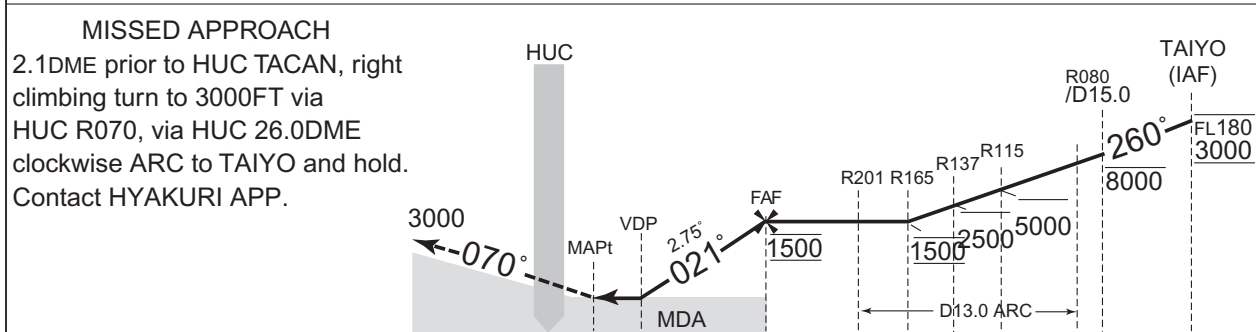
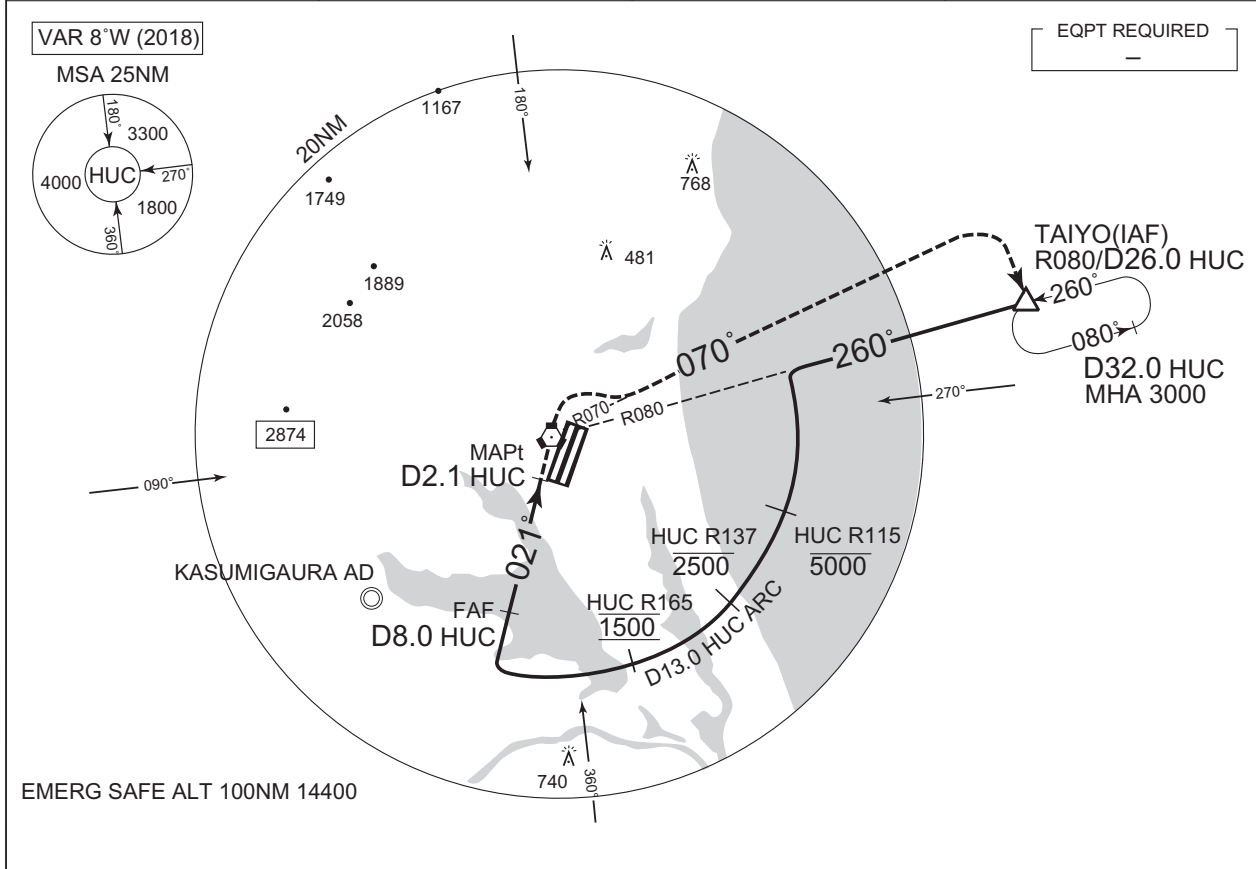
CHANGE : DME to HUC at VDP. NM to THR at VDP.

INSTRUMENT APPROACH CHART

RJAH / HYAKURI

TACAN Z RWY03L

|   |   |   |            |
|---|---|---|------------|
| HYAKURI APP<br>120.1 - 123.875<br>305.7 - 362.3 | HYAKURI VORTAC<br>113.3 HUC<br>CH-80X<br>36°11'13"N/140°24'49"E | HYAKURI TWR<br>118.025- 126.2<br>236.8 - 323.8<br>119.5G - 275.8G | RADAR AVBL |
|---|---|---|------------|



CHANGE : DME to HUC at VDP. NM to THR at VDP.

|            |     |     |     |      |
|------------|-----|-----|-----|------|
| DME to HUC | 2.1 | 2.4 | 8.0 | 13.0 |
| NM to THR  | 1.0 | 1.3 | 6.9 | 11.9 |

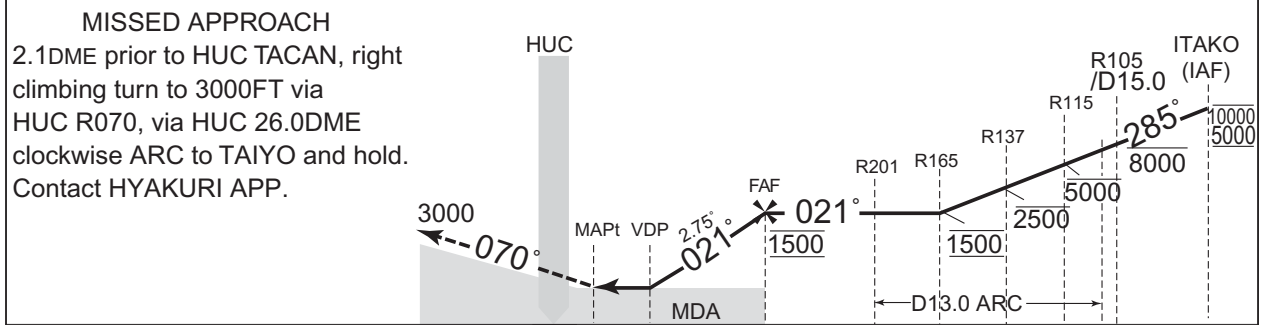
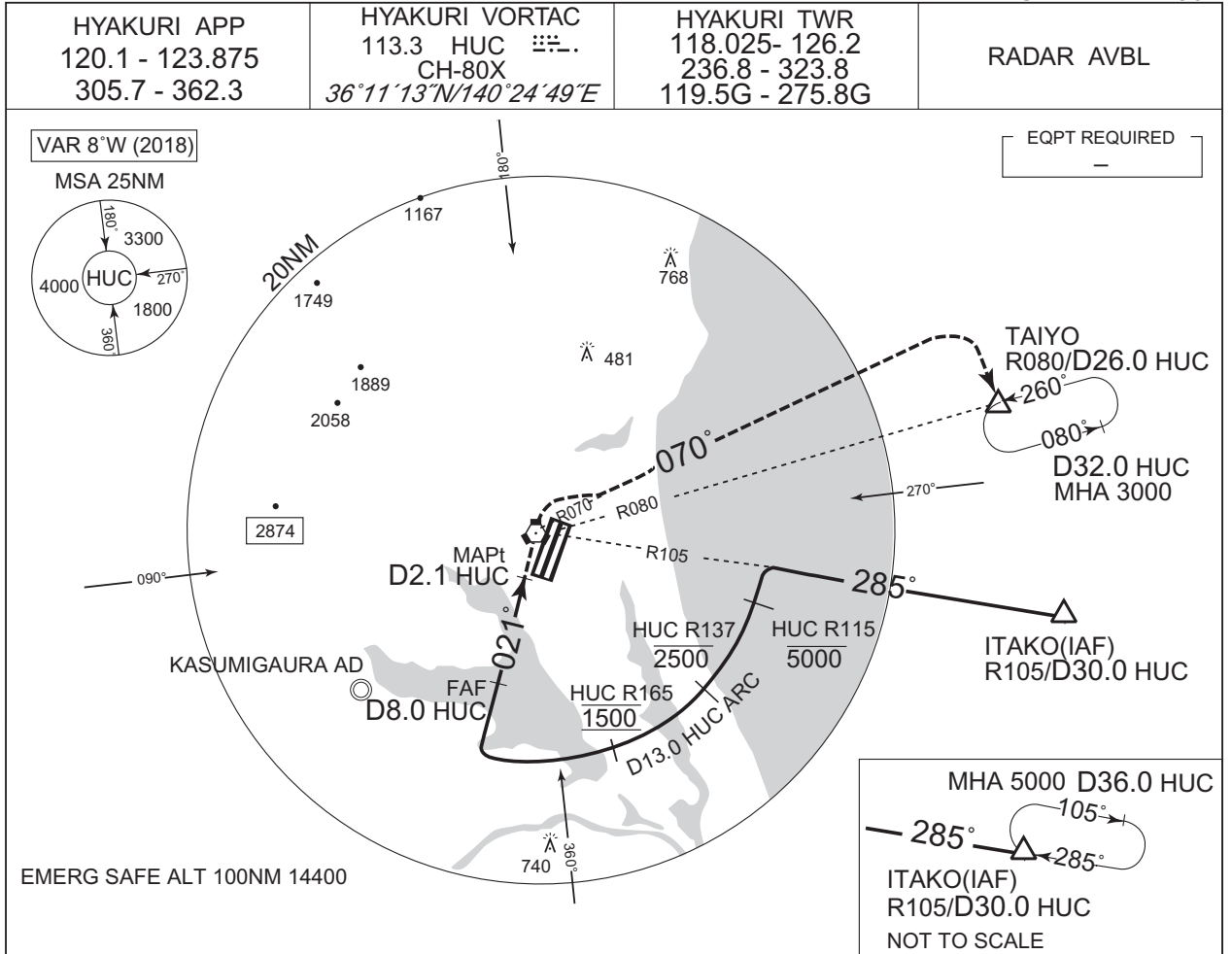
|        |          |               |                |
|--------|----------|---------------|----------------|
| MINIMA |          | THR elev. 107 | AD elev. 107   |
| CAT    | CIRCLING |               |                |
|        | MDA(H)   | RVR/CMV       | MDA(H) VIS     |
|        | A        | 540 (433)     | 580 (473) 1600 |
|        | B        |               | 1500           |
|        | C        |               | 1600           |
| D      | 1800     |               |                |



INSTRUMENT APPROACH CHART

RJAH / HYAKURI

TACAN Y RWY03L



CHANGE : DME to HUC at VDP. NM to THR at VDP.

|  |            |     |     |     |      |
|--|------------|-----|-----|-----|------|
|  | DME to HUC | 2.1 | 2.4 | 8.0 | 13.0 |
|  | NM to THR  | 1.0 | 1.3 | 6.9 | 11.9 |

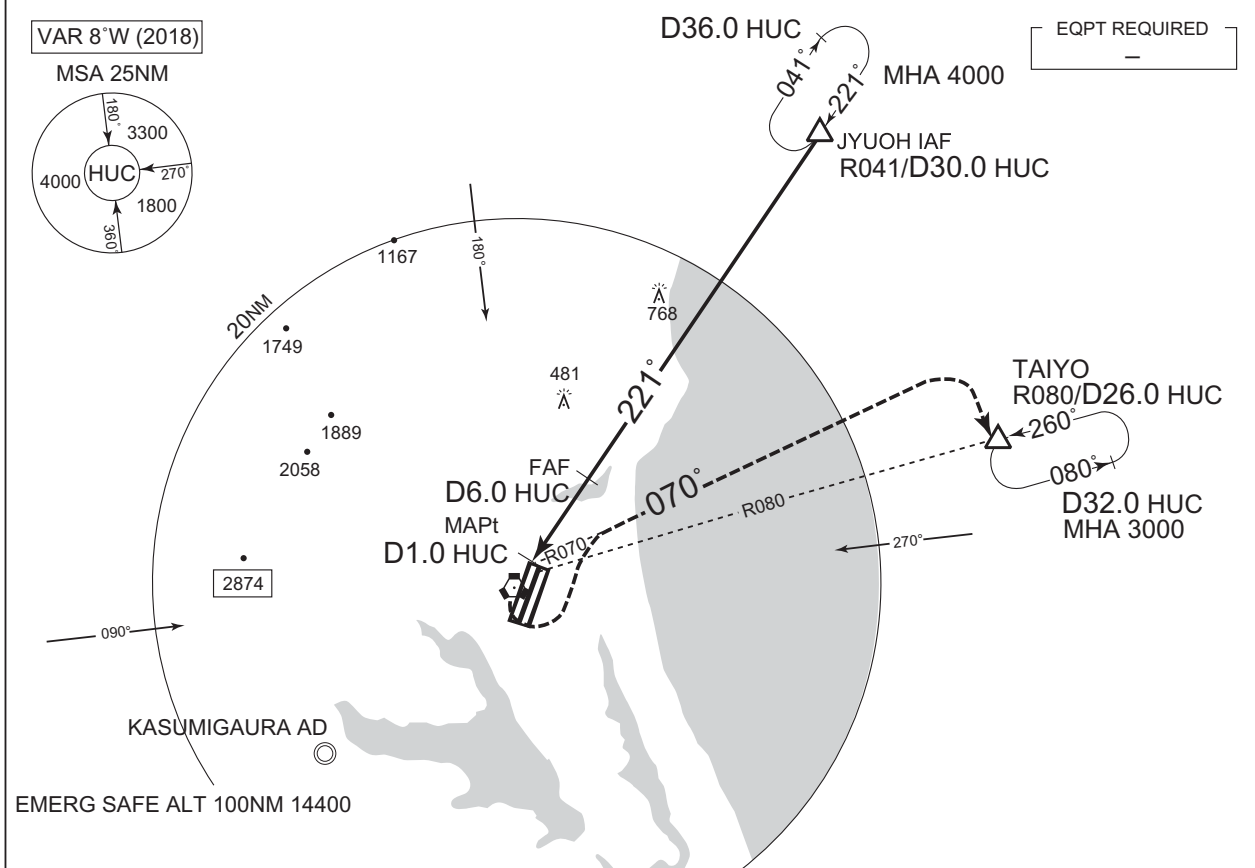
|     |           |               |              |      |
|-----|-----------|---------------|--------------|------|
|     | MINIMA    | THR elev. 107 | AD elev. 107 |      |
| CAT | CIRCLING  |               |              |      |
|     | MDA(H)    | RVR/<br>CMV   | MDA(H)       | VIS  |
| A   | 540 (433) | 1400          | 580 (473)    | 1600 |
| B   |           | 1500          |              |      |
| C   |           | 1600          | 660 (553)    | 2400 |
| D   |           | 1800          |              |      |

INSTRUMENT APPROACH CHART

RJAH / HYAKURI

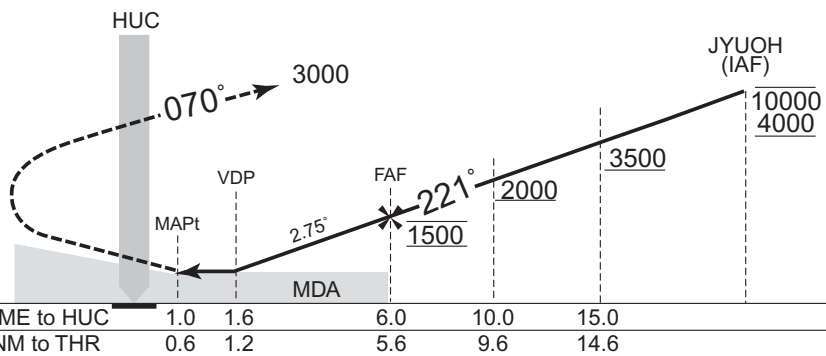
TACAN Z RWY21L

|   |   |   |            |
|---|---|---|------------|
| HYAKURI APP<br>120.1 - 123.875<br>305.7 - 362.3 | HYAKURI VORTAC<br>113.3 HUC $\ddot{\text{H}}$<br>CH-80X<br>36°11'13"N/140°24'49"E | HYAKURI TWR<br>118.025- 126.2<br>236.8 - 323.8<br>119.5G - 275.8G | RADAR AVBL |
|---|---|---|------------|



MISSED APPROACH

1.0DME prior to HUC TACAN, left climbing turn to 3000FT via HUC R070, via HUC 26.0DME clockwise ARC to TAIYO and hold.  
Contact HYAKURI APP.



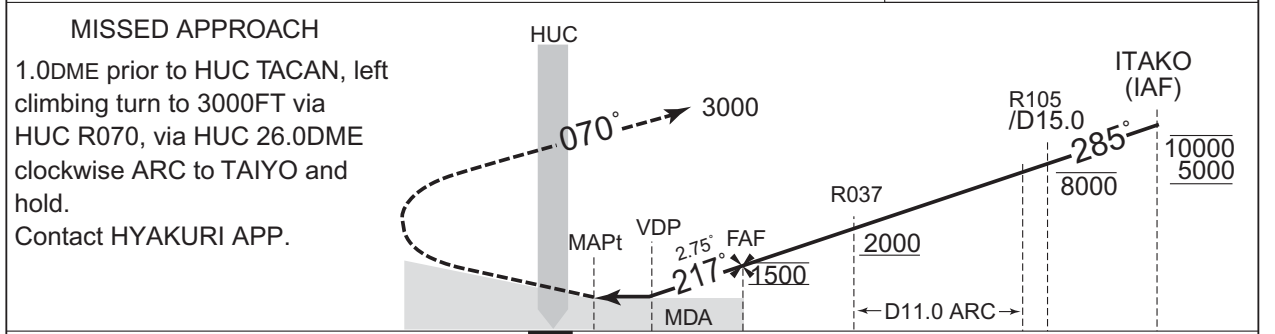
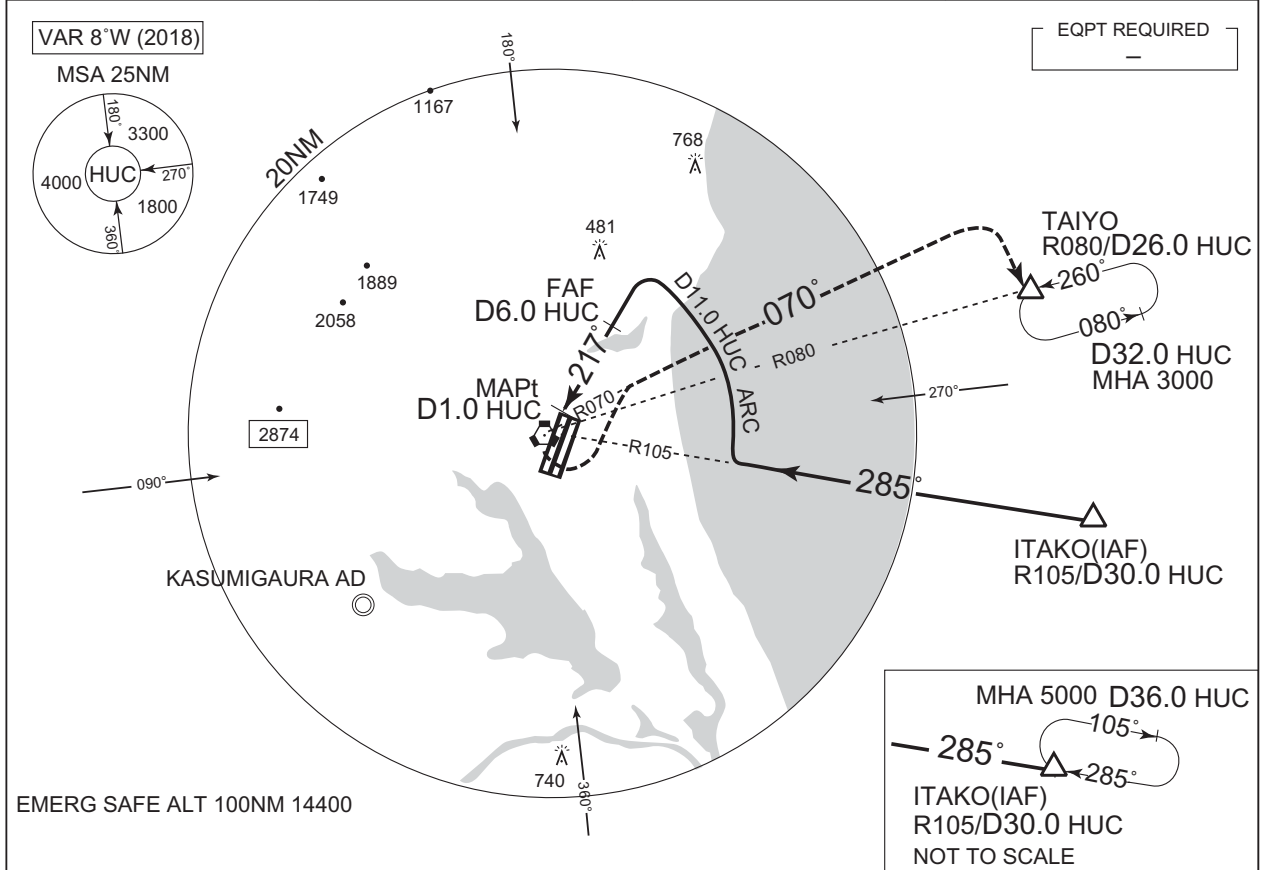
CHANGE : DME to HUC at VDP. NM to THR at VDP.

|        |           |               |              |      |
|--------|-----------|---------------|--------------|------|
| MINIMA |           | THR elev. 107 | AD elev. 107 |      |
| CAT    |           |               | CIRCLING     |      |
|        | MDA(H)    | RVR/CMV       | MDA(H)       | VIS  |
| A      | 500 (393) | 900           | 580 (473)    | 1600 |
| B      |           | 1000          |              |      |
| C      |           |               | 660 (553)    | 2400 |
| D      |           |               |              | 1400 |

INSTRUMENT APPROACH CHART

RJAH / HYAKURI TACAN Y RWY21L

|   |   |   |            |
|---|---|---|------------|
| HYAKURI APP<br>120.1 - 123.875<br>305.7 - 362.3 | HYAKURI VORTAC<br>113.3 HUC ☐☐☐..<br>CH-80X<br>36°11'13"N/140°24'49"E | HYAKURI TWR<br>118.025- 126.2<br>236.8 - 323.8<br>119.5G - 275.8G | RADAR AVBL |
|---|---|---|------------|



|            |     |     |     |      |
|------------|-----|-----|-----|------|
| DME to HUC | 1.0 | 1.6 | 6.0 | 11.0 |
| NM to THR  | 0.6 | 1.2 | 5.6 | 10.6 |

|        |           |               |              |      |
|--------|-----------|---------------|--------------|------|
| MINIMA |           | THR elev. 107 | AD elev. 107 |      |
| CAT    |           |               | CIRCLING     |      |
|        | MDA(H)    | RVR/CMV       | MDA(H)       | VIS  |
| A      | 500 (393) | 900           | 580 (473)    | 1600 |
| B      |           | 1000          |              |      |
| C      |           |               | 660 (553)    | 2400 |
| D      |           | 1400          | 3200         |      |

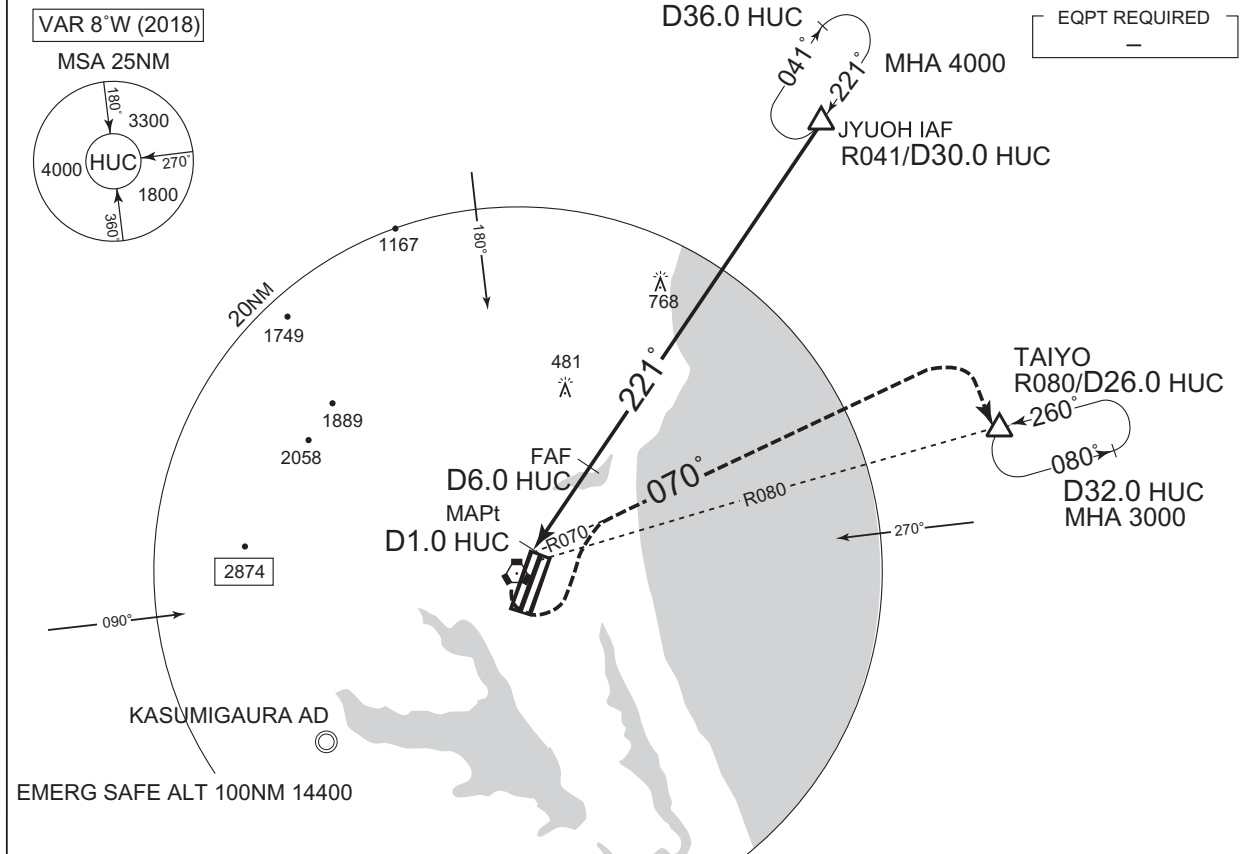
CHANGE : DME to HUC at VDP. NM to THR at VDP.

INSTRUMENT APPROACH CHART

RJAH / HYAKURI

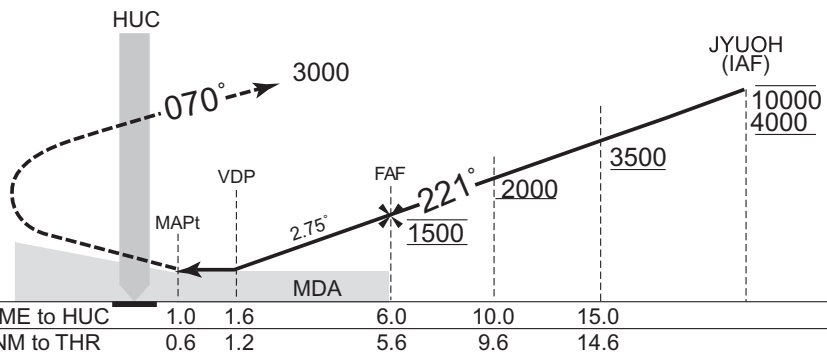
TACAN Z RWY21R

|   |   |   |            |
|---|---|---|------------|
| HYAKURI APP<br>120.1 - 123.875<br>305.7 - 362.3 | HYAKURI VORTAC<br>113.3 HUC $\equiv \equiv \dots$<br>CH-80X<br>36°11'13"N/140°24'49"E | HYAKURI TWR<br>118.025- 126.2<br>236.8 - 323.8<br>119.5G - 275.8G | RADAR AVBL |
|---|---|---|------------|



MISSED APPROACH

1.0DME prior to HUC TACAN, left climbing turn to 3000FT via HUC R070, via HUC 26.0DME clockwise ARC to TAIYO and hold.  
Contact HYAKURI APP.



CHANGE : DME to HUC at VDP. NM to THR at VDP.

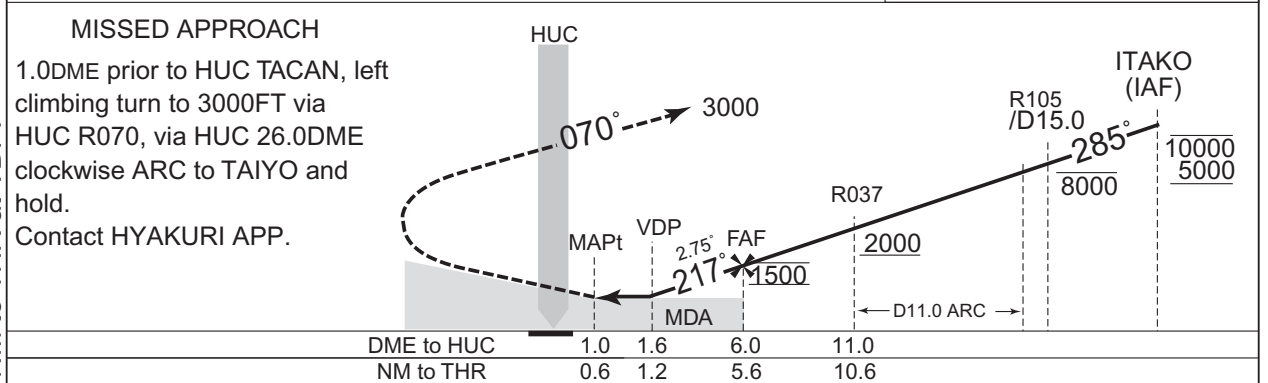
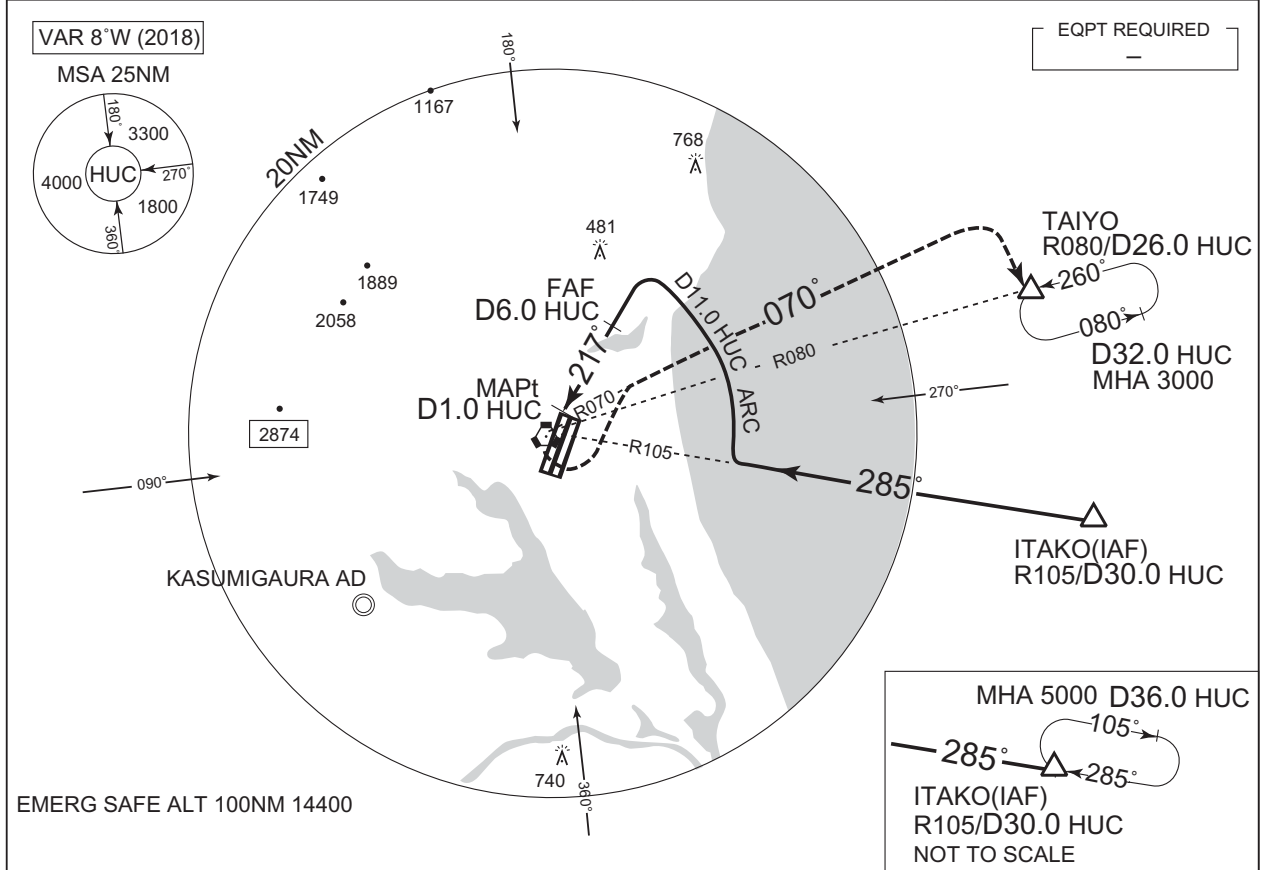
|        |               |              |           |      |      |           |      |
|--------|---------------|--------------|-----------|------|------|-----------|------|
| MINIMA | THR elev. 107 | AD elev. 107 |           |      |      |           |      |
| CAT    | CIRCLING      |              |           |      |      |           |      |
|        | MDA(H)        | RVR/CMV      | MDA(H)    | VIS  |      |           |      |
| A      | 500 (393)     | 1500         | 580 (473) | 1600 |      |           |      |
| B      |               |              |           |      |      |           |      |
| C      |               |              |           |      | 1800 | 660 (553) | 2400 |
| D      |               |              |           |      | 2000 |           | 3200 |

INSTRUMENT APPROACH CHART

RJAH / HYAKURI

TACAN Y RWY21R

|   |   |   |            |
|---|---|---|------------|
| HYAKURI APP<br>120.1 - 123.875<br>305.7 - 362.3 | HYAKURI VORTAC<br>113.3 HUC<br>CH-80X<br>36°11'13"N/140°24'49"E | HYAKURI TWR<br>118.025- 126.2<br>236.8 - 323.8<br>119.5G - 275.8G | RADAR AVBL |
|---|---|---|------------|



CHANGE : DME to HUC at VDP. NM to THR at VDP.

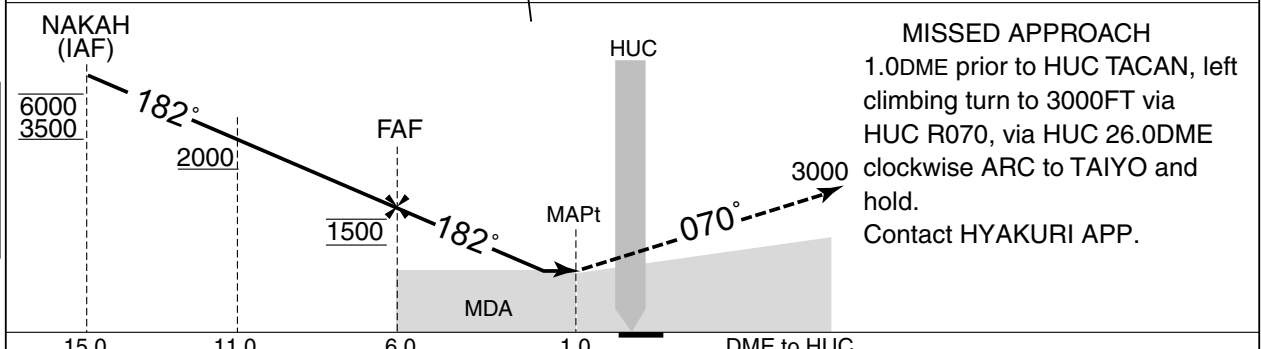
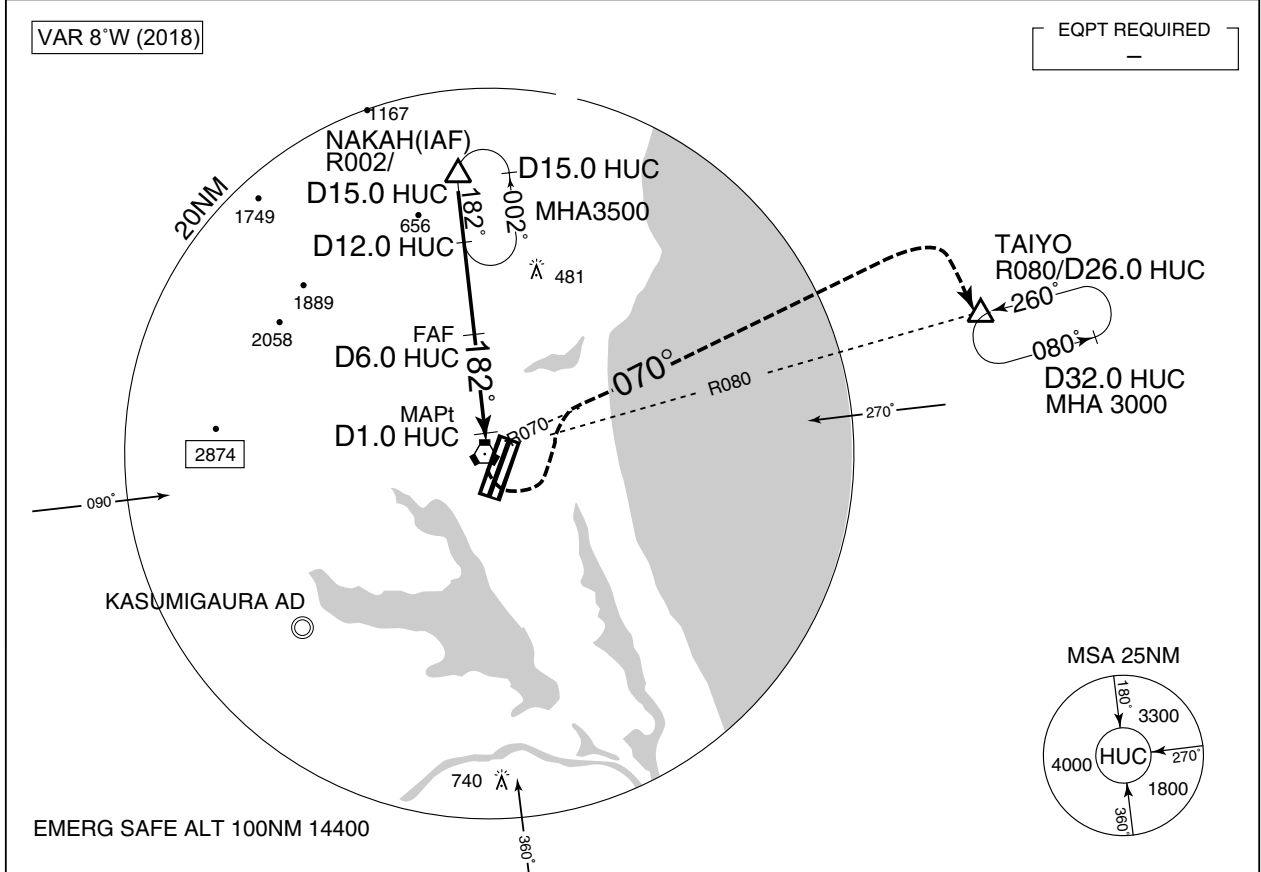
|        |           |               |              |      |      |      |
|--------|-----------|---------------|--------------|------|------|------|
| MINIMA |           | THR elev. 107 | AD elev. 107 |      |      |      |
| CAT    |           |               | CIRCLING     |      |      |      |
|        | MDA(H)    | RVR/CMV       | MDA(H)       | VIS  |      |      |
| A      | 500 (393) | 1500          | 580 (473)    | 1600 |      |      |
| B      |           | 1800          | 660 (553)    | 2400 |      |      |
| C      |           |               |              |      | 2000 | 3200 |
| D      |           |               |              |      |      |      |

INSTRUMENT APPROACH CHART

RJAH / HYAKURI

TACAN A

|   |  |   |            |
|---|--|---|------------|
| HYAKURI APP<br>120.1 - 123.875<br>305.7 - 362.3 | HYAKURI VORTAC<br>113.3 HUC $\text{---}$<br>CH-80X<br>36°11'13"N/140°24'49"E | HYAKURI TWR<br>118.025- 126.2<br>236.8 - 323.8<br>119.5G - 275.8G | RADAR AVBL |
|---|--|---|------------|



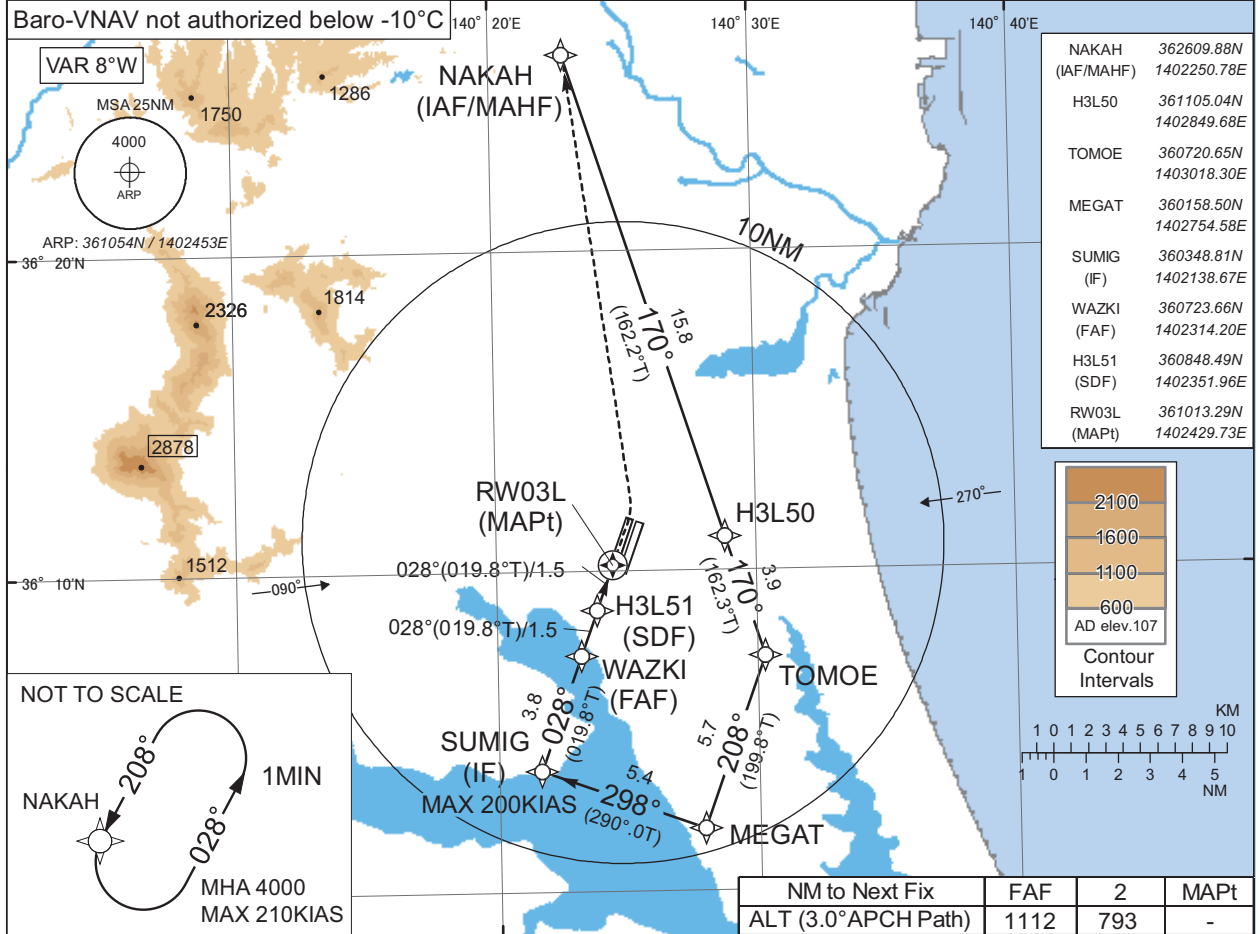
|        |           |              |  |
|--------|-----------|--------------|--|
| MINIMA |           | AD elev. 107 |  |
| CAT    | CIRCLING  |              |  |
|        | MDA(H)    | VIS          |  |
| A      | 580 (473) | 1600         |  |
| B      |           | 2400         |  |
| C      | 660 (553) | 3200         |  |
| D      |           |              |  |

INSTRUMENT APPROACH CHART

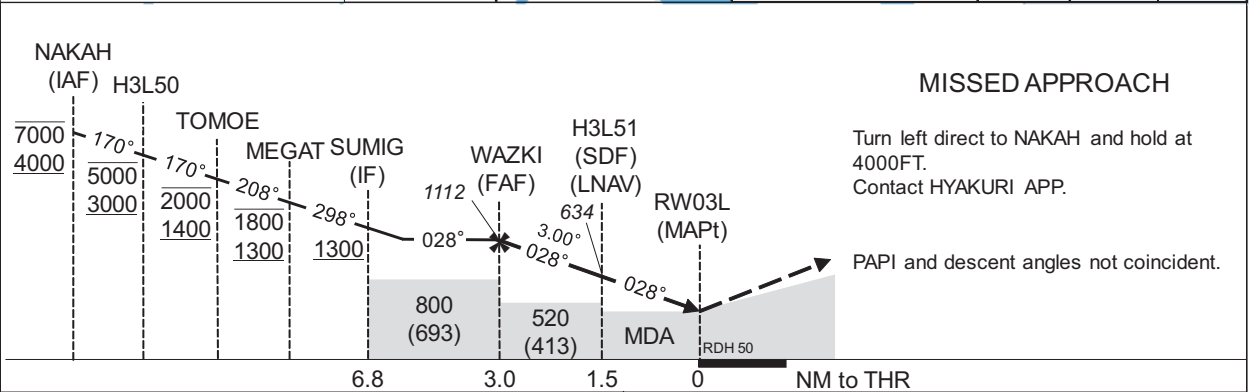
RJAH / HYAKURI

RNP RWY03L

|   |          |  |            |
|---|----------|--|------------|
| HYAKURI APP<br>120.1 - 123.875<br>305.7 - 362.3 | RNP APCH | HYAKURI TWR<br>118.025 - 126.2<br>236.8 - 323.8<br>119.5G - 275.8G | RADAR AVBL |
|---|----------|--|------------|



CHANGE : Missed APCH PROC for using VORTAC abolished. RNAV HLDG established. HLDG for using NAVAID abolished.



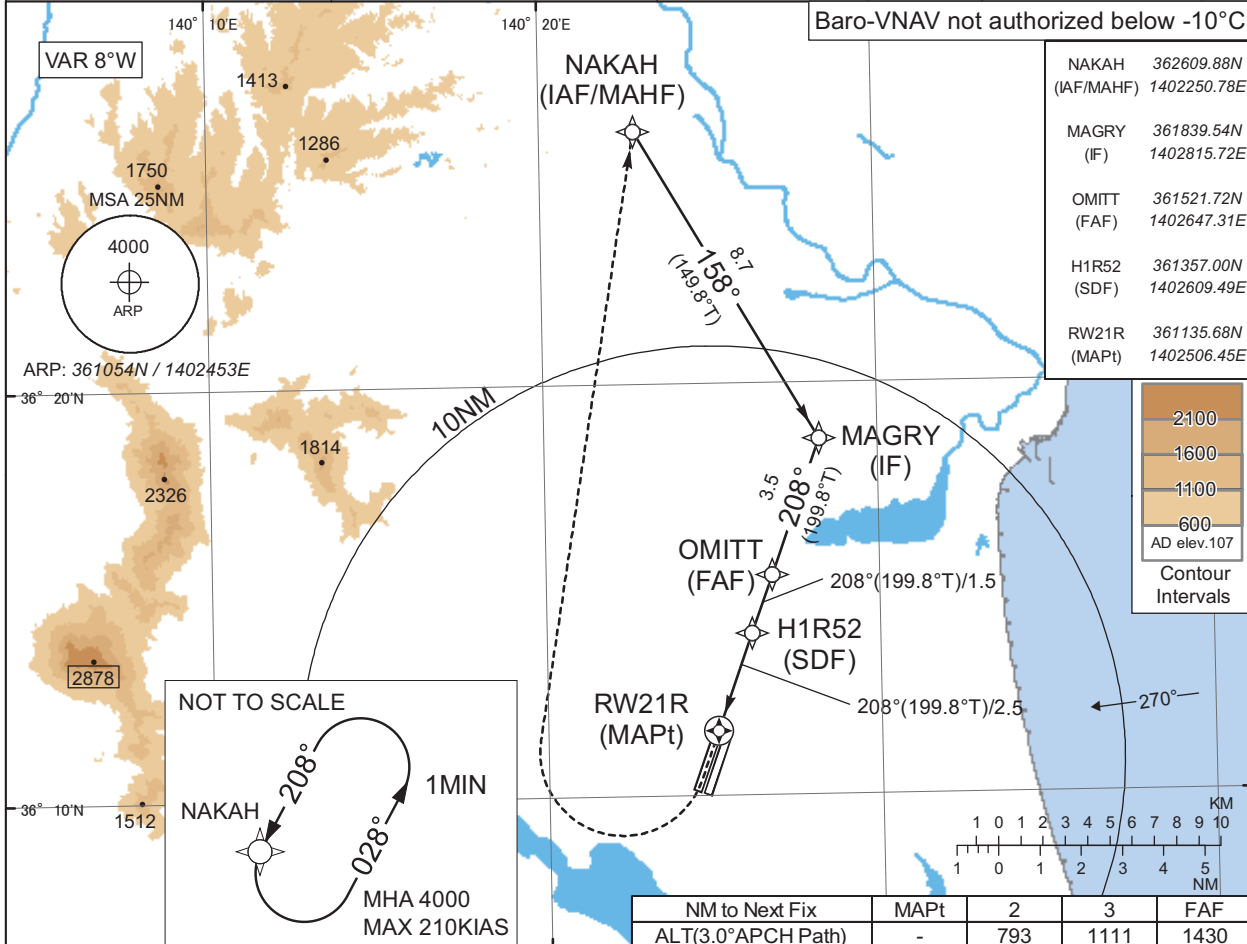
| CAT | THR elev. 107 |         | AD elev. 107 |         | CIRCLING |      |
|-----|---------------|---------|--------------|---------|----------|------|
|     | DA(H)         | RVR/CMV | MDA(H)       | RVR/CMV | MDA(H)   | VIS  |
| A   | 490(383)      | 1200    | 490(383)     | 1200    | 580(473) | 1600 |
| B   |               | 1300    |              | 1300    |          |      |
| C   |               | 1400    |              | 1400    |          |      |
| D   |               | 1600    |              | 1600    |          |      |

INSTRUMENT APPROACH CHART

RJAH / HYAKURI

RNP RWY21R

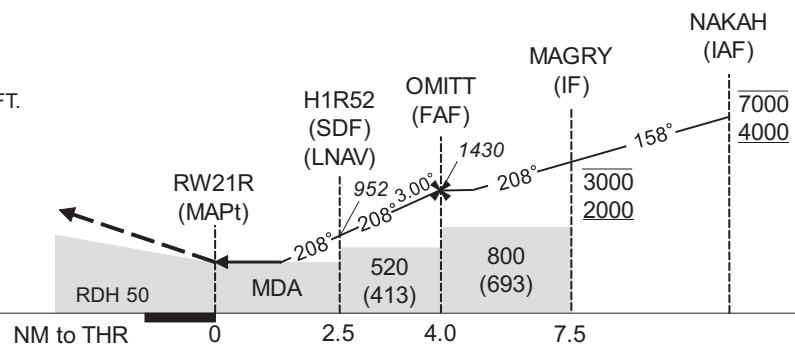
|   |          |  |            |
|---|----------|--|------------|
| HYAKURI APP<br>120.1 - 123.875<br>305.7 - 362.3 | RNP APCH | HYAKURI TWR<br>118.025 - 126.2<br>236.8 - 323.8<br>119.5G - 275.8G | RADAR AVBL |
|---|----------|--|------------|



MISSED APPROACH

Turn right direct to NAKAH and hold at 4000FT.  
Contact HYAKURI APP.

PAPI and descent angles not coincident.



| CAT | THR elev. 107 |         | AD elev. 107 |         |          |      |
|-----|---------------|---------|--------------|---------|----------|------|
|     | LNAV/VNAV     |         | LNAV         |         | CIRCLING |      |
|     | DA(H)         | RVR/CMV | MDA(H)       | RVR/CMV | MDA(H)   | VIS  |
| A   | 500(393)      | 1500    | 500(393)     | 1500    | 580(473) | 1600 |
| B   |               | 1800    |              | 1800    |          | 2400 |
| C   | 520(413)      | 2000    | 520(413)     | 2000    | 660(553) | 3200 |
| D   |               |         |              |         |          |      |

CHANGE : Missed APCH PROC for using VORTAC abolished. RNAV HLDG established. HLDG for using NAVAID abolished.



RJAH / HYAKURI

Minimum Vectoring Altitude CHART

