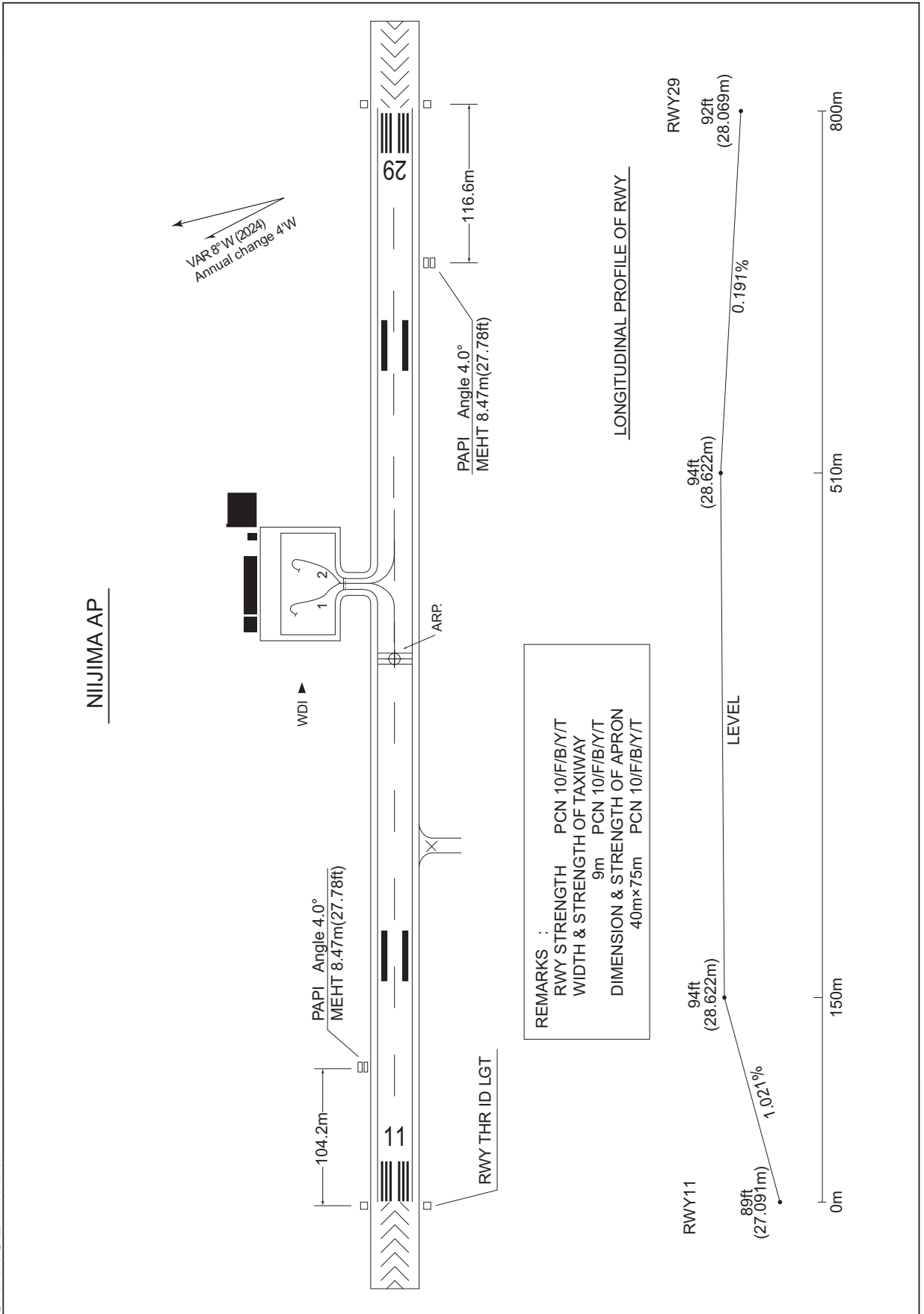


RJAN / NIIJIMA

AD CHART

CHANGE : VAR.



**INTENTIONALLY LEFT BLANK**

STANDARD DEPARTURE CHART - INSTRUMENT

RJAN / NIIJIMA

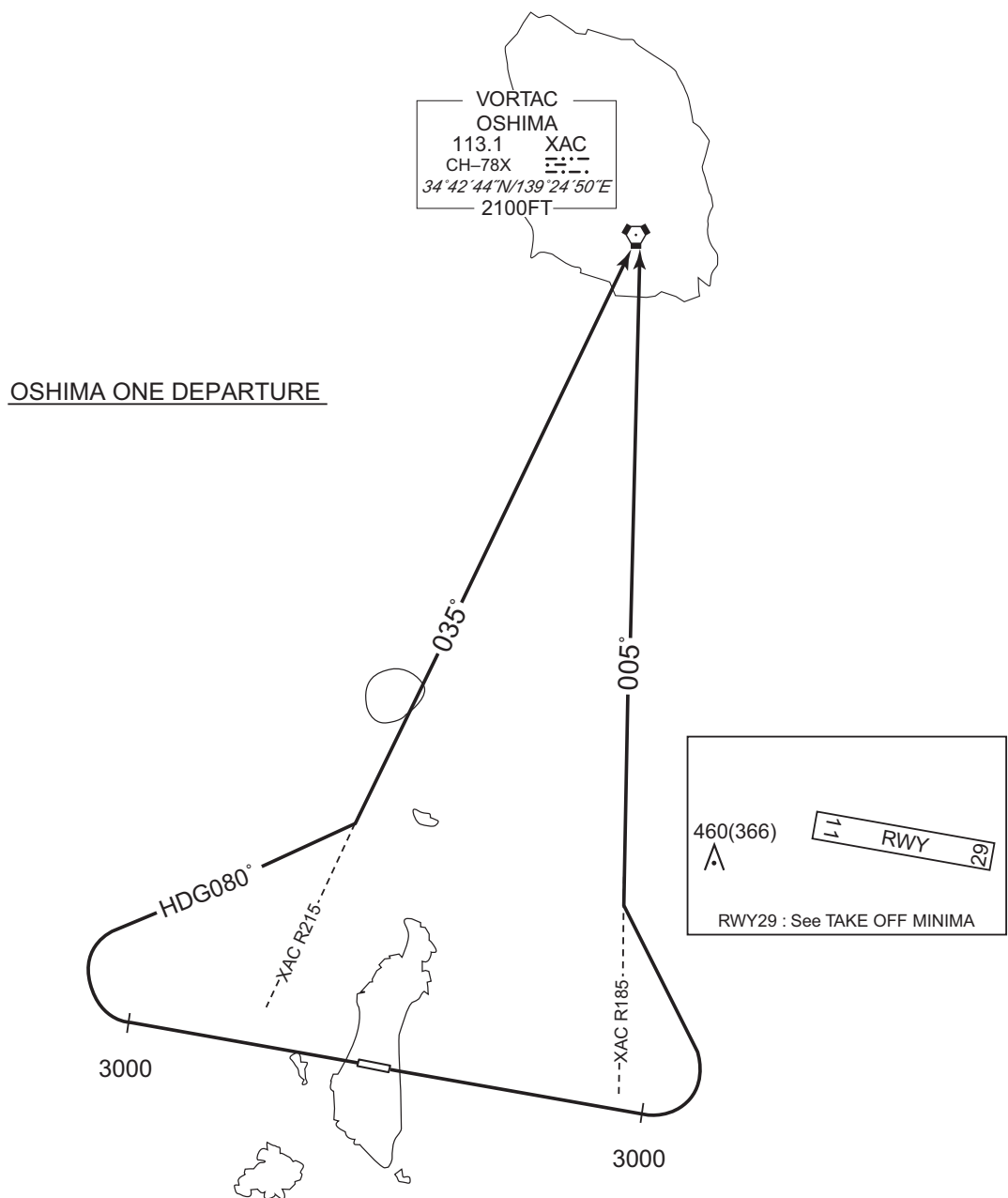
SID

OSHIMA ONE DEPARTURE

RWY11 : Climb RWY HDG to 3000FT, turn left, via XAC R185 to XAC VORTAC.

RWY29 : Climb RWY HDG to 3000FT, turn right HDG080° to intercept and proceed via XAC R215 to XAC VORTAC.

Note RWY11: 5.0% climb gradient required up to 3000FT due to airspace restrictions only.  
RWY29: 5.0% climb gradient required up to 3000FT due to airspace restrictions only.

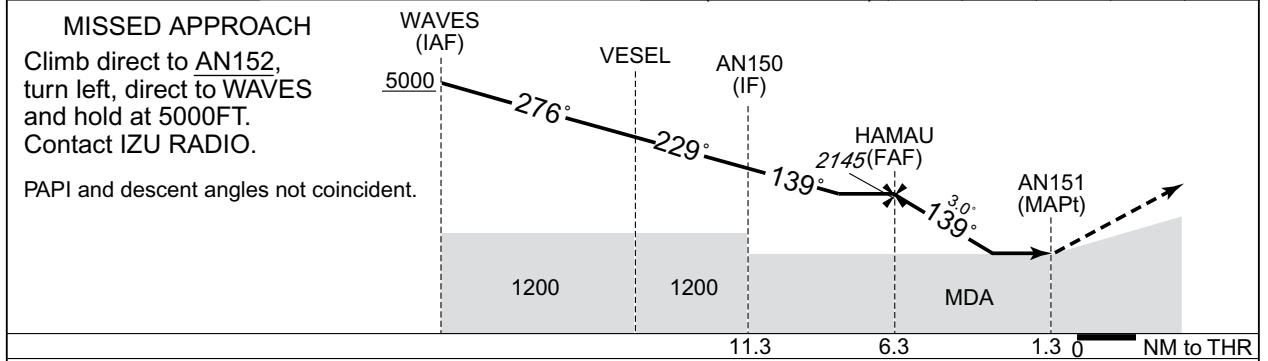
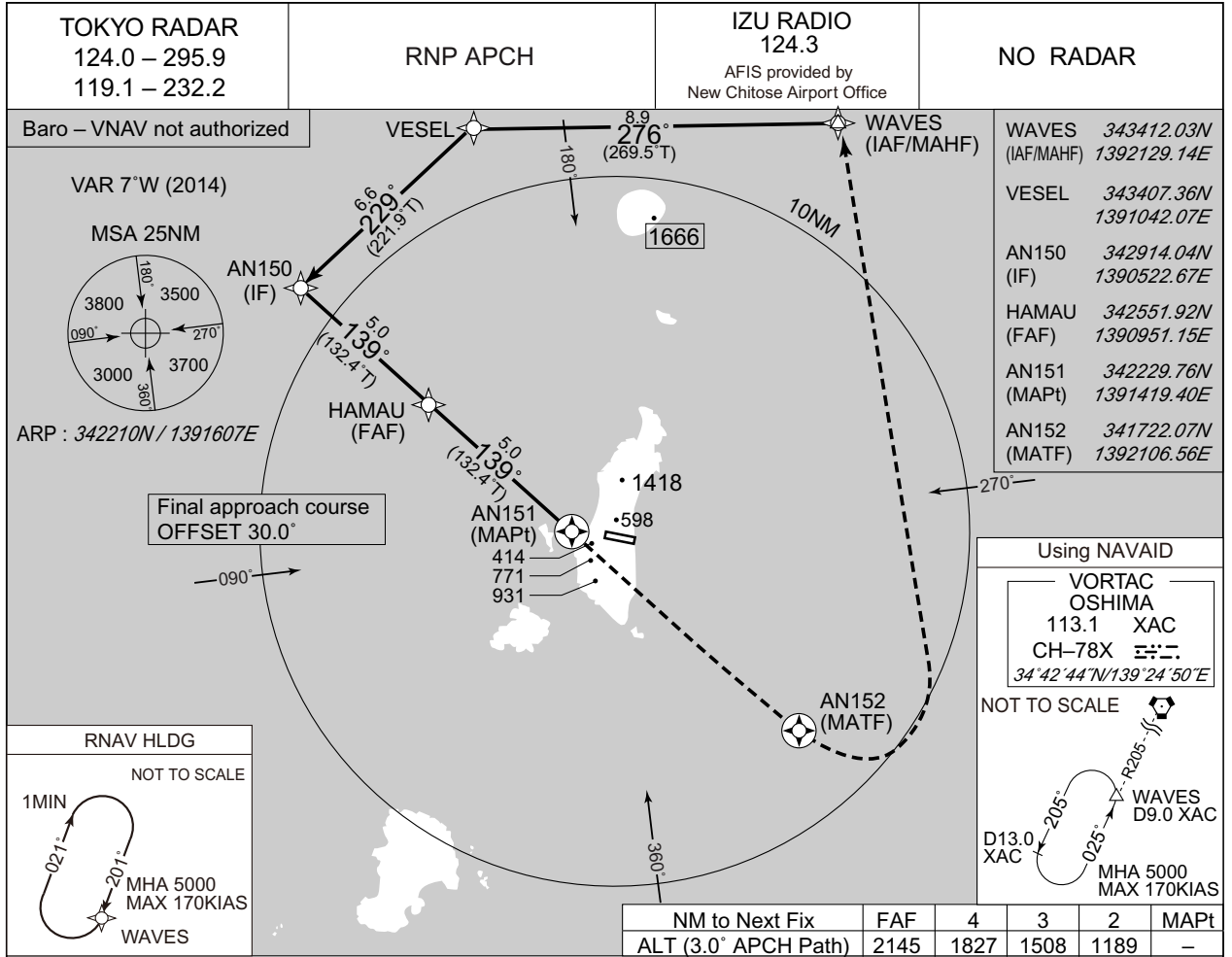


**INTENTIONALLY LEFT BLANK**

INSTRUMENT APPROACH CHART

RJAN / NIIJIMA

RNP RWY11



Missed APCH climb gradient MNM 5.0%

MINIMA		THR elev. 89	AD elev. 94			
CAT	LNAV/VNAV		LNAV	CIRCLING		
	DA(H)	CMV	MDA(H)	CMV	MDA(H)	VIS
A	Not applicable		1000 (906)	1500	1380 (1286)	1600
B						
C			-	-	-	-
D			-	-	-	-

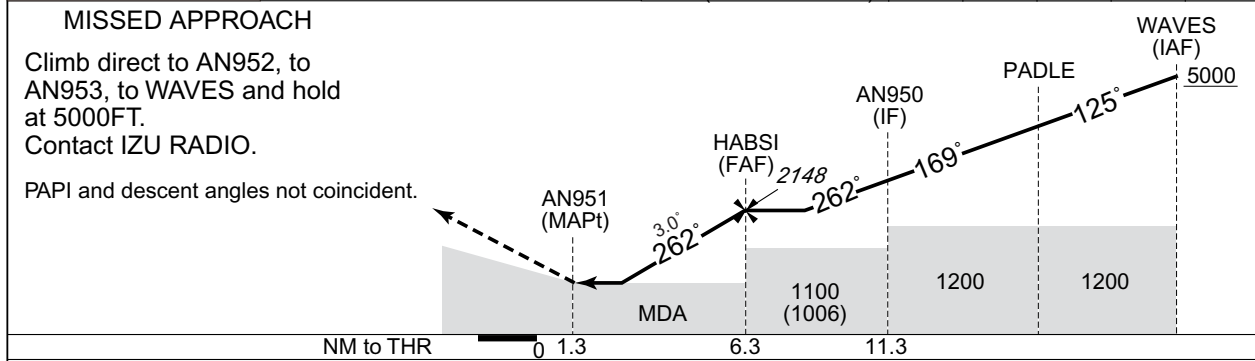
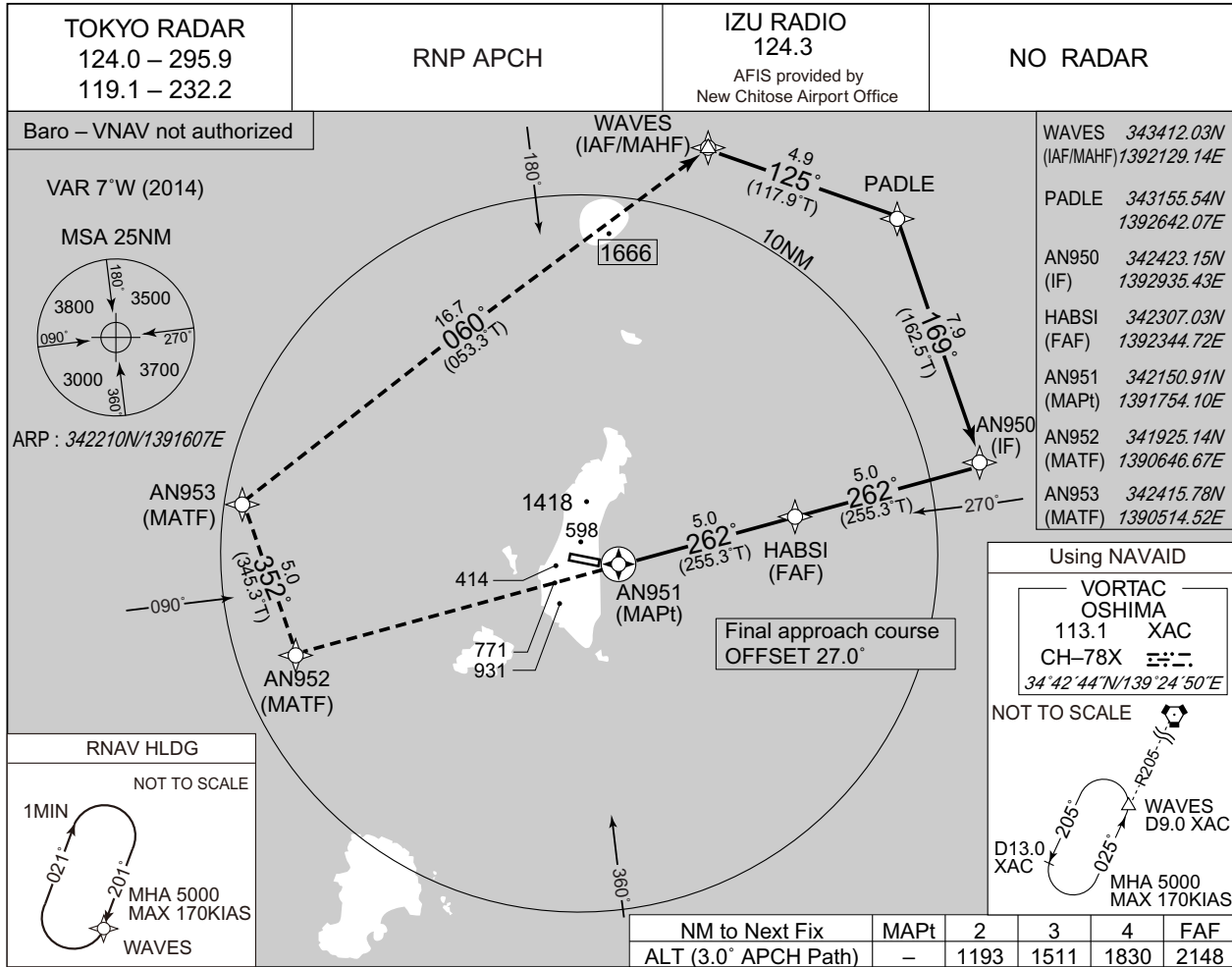
MINIMA with Missed APCH climb gradient of 2.5% are not established.  
Circling to SOUTH side of RWY only.

CHANGE:PROC renamed. Requirement for RNP.

INSTRUMENT APPROACH CHART

RJAN / NIIJIMA

RNP RWY29

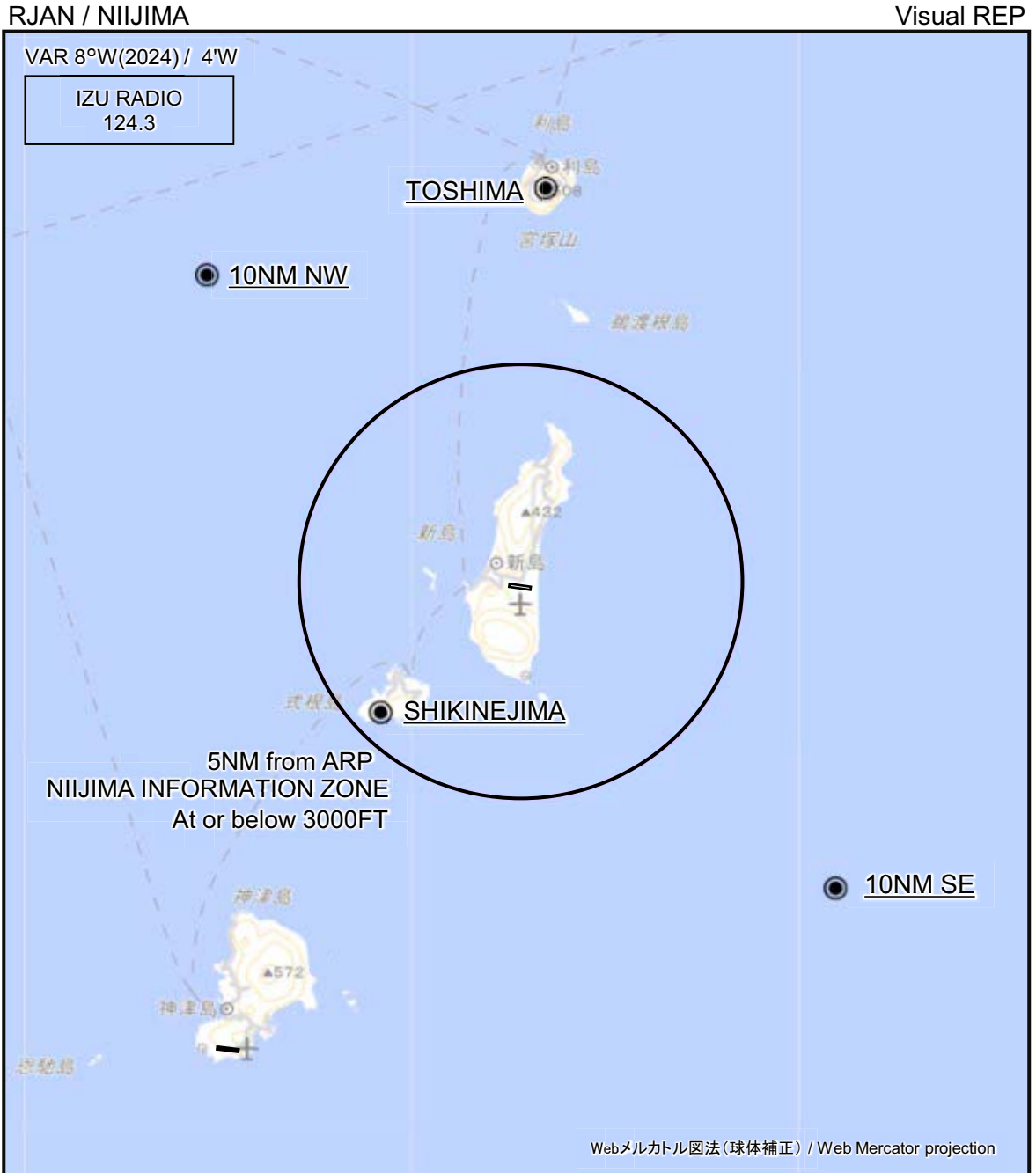


Missed APCH climb gradient MNM 5.0%

MINIMA		THR elev. 92	AD elev. 94			
CAT	LNAV/VNAV		LNAV		CIRCLING	
	DA(H)	CMV	MDA(H)	CMV	MDA(H)	VIS
A	Not applicable		960 (866)	1500	1380 (1286)	1600
B			1010 (916)			
C			-	-	-	-
D			-	-	-	-

MINIMA with Missed APCH climb gradient of 2.5% are not established.  
Circling to SOUTH side of RWY only.

CHANGE:PROC renamed. Requirement for RNP.



※図中に標高を示す数字がある場合、単位はメートル(m)である。The unit of measurement used to express elevation is meter(m).

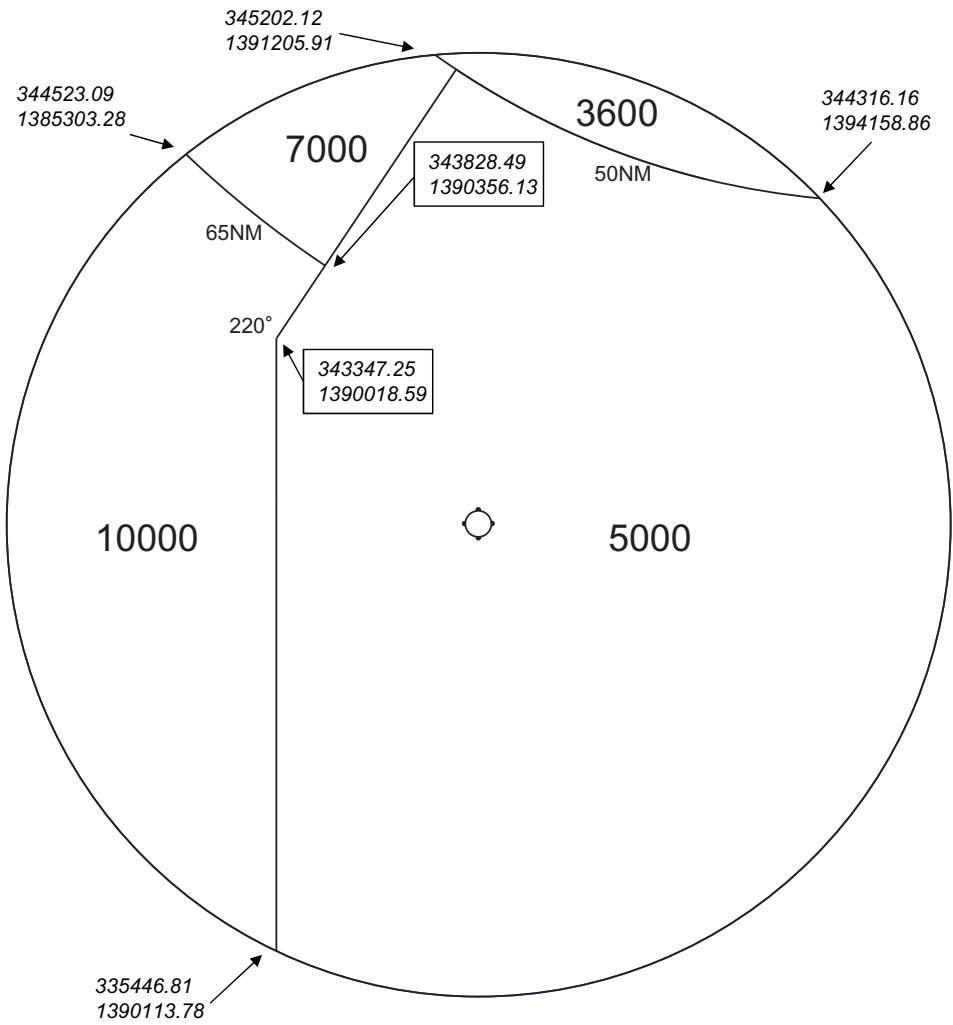
Call sign	BRG / DIST from ARP	Remarks
利島 Toshima	003°T / 9.0NM	宮塚山 Mt. Miyatsuka
10NM NW	315°T / 10.0NM	海上 Over the sea
式根島 Shikinejima	227°T / 4.4NM	御釜湾 Mikawa Bay
10NM SE	135°T / 10.0NM	海上 Over the sea

CHANGE : VAR.

RJAN / NIIJIMA

Minimum Vectoring Altitude CHART

VAR8°W(2019)



- CENTER : 342210N/1391607E(ARP)  
- 342210N/1391607E RADIUS : 30NM  
- RADIAL & DISTANCE FM 353312N/1394652E(TOKYO ARP)

CHANGE : VAR.