

AD 2 AERODROMES

RJAN AD 2.1 AERODROME LOCATION INDICATOR AND NAME

RJAN - NIIJIMA

RJAN AD 2.2 AERODROME GEOGRAPHICAL AND ADMINISTRATIVE DATA

1	ARP coordinates and site at AD	342210N 1391607E 0.4km from RWY 11 THR
2	Direction and distance from (city)	1.5km SE from Niijima village office
3	Elevation/ Reference temperature	94 FT / 29 °C (2004-2008)
4	Geoid undulation at AD ELEV PSN	133ft
5	MAG VAR/ Annual change	8° W(2024) / 4'W
6	AD Administration, address, telephone, telefax, telex, AFS, e-mail and/or Web-site addresses	Tokyo Municipal Govt. Kawahara Niijima-mura Tokyo Tel 04992-5-1267 Fax 04992-5-1537
7	Types of traffic permitted (IFR/VFR)	IFR/VFR
8	Remarks	Nil

RJAN AD 2.3 OPERATIONAL HOURS

1	AD Administration	2330-0815 [2330 20th APR - 0815 10th MAY, 2330 15th JUL - 0815 31st AUG] 2330-0730 [2330 31st AUG - 0730 20th APR, 2330 10th MAY - 0730 15th JUL]
2	Customs and immigration	On request Customs: 03-3599-6286 Immigration: 0570-034259 (Department Number 210)
3	Health and sanitation	Quarantine(human): On request(03-3599-1515) Quarantine(animal, plant): Nil
4	AIS Briefing Office	Nil
5	ATS Reporting Office(ARO)	Nil
6	MET Briefing Office	H24(TOKYO)
7	ATS	2330-0815 [2330 20th APR - 0815 10th MAY, 2330 15th JUL - 0815 31st AUG] 2330-0730 [2330 31st AUG - 0730 20th APR, 2330 10th MAY - 0730 15th JUL] Remarks: AFIS provided by New Chitose Airport Office.
8	Fuelling	2330-0815 [2330 20th APR - 0815 10th MAY, 2330 15th JUL - 0815 31st AUG] 2330-0730 [2330 31st AUG - 0730 20th APR, 2330 10th MAY - 0730 15th JUL] (On request)
9	Handling	2330-0815 [2330 20th APR - 0815 10th MAY, 2330 15th JUL - 0815 31st AUG] 2330-0730 [2330 31st AUG - 0730 20th APR, 2330 10th MAY - 0730 15th JUL]
10	Security	2330-0815 [2330 20th APR - 0815 10th MAY, 2330 15th JUL - 0815 31st AUG] 2330-0730 [2330 31st AUG - 0730 20th APR, 2330 10th MAY - 0730 15th JUL]
11	De-icing	Nil
12	Remarks	Nil

RJAN AD 2.4 HANDLING SERVICES AND FACILITIES

1	Cargo-handling facilities	Nil
2	Fuel/ oil types	Fuel : JET A-1
3	Fuelling facilities/ capacity	Fuel truck
4	De-icing facilities	Nil
5	Hangar space for visiting aircraft	Nil
6	Repair facilities for visiting aircraft	Nil
7	Remarks	Nil

RJAN AD 2.5 PASSENGER FACILITIES

1	Hotels	Nil
2	Restaurants	Nil
3	Transportation	Nil
4	Medical facilities	Nil
5	Bank and Post Office	Nil
6	Tourist Office	Nil
7	Remarks	Nil

RJAN AD 2.6 RESCUE AND FIRE FIGHTING SERVICES

1	AD category for fire fighting	CAT 3
2	Rescue equipment	Chemical fire fighting truck x 1
3	Capability for removal of disabled aircraft	Nil
4	Remarks	Nil

RJAN AD 2.7 SEASONAL AVAILABILITY-CLEARING

1	Types of clearing equipment	Not applicable
2	Clearance priorities	Nil
3	Remarks	Nil

RJAN AD 2.8 APRONS, TAXIWAYS AND CHECK LOCATIONS DATA

1	Apron surface and strength	Surface : Asphalt concrete Strength : PCN 10/F/B/Y/T
2	Taxiway width, surface and strength	Width : 9m Surface : Asphalt concrete Strength : PCN 10/F/B/Y/T
3	ACL and elevation	Not available
4	VOR checkpoints	Not available
5	INS checkpoints	Spot NR 1: 342212.30N 1391608.48E 2: 342212.05N 1391609.82E
6	Remarks	Nil

RJAN AD 2.9 SURFACE MOVEMENT GUIDANCE AND CONTROL SYSTEM AND MARKINGS

1	Use of aircraft stand ID signs, TWY guide lines and Visual docking/ parking guidance system of aircraft stands	Nil
2	RWY and TWY markings and LGT	RWY: RWY 11/29 (Marking) RWY designation, RWY CL, RWY THR, RWY middle point, TDZ, Aiming point, RWY side stripe TWY : (Marking) TWY CL, TWY side stripe, RWY HLDG PSN
3	Stop bars	Nil
4	Remarks	(Marking) Overrun area

RJAN AD 2.10 AERODROME OBSTACLES

RWY/Area affected	Obstacle type	Coordinates	Elevation	Markings/ LGT	Remarks
Nil					

RJAN AD 2.11 METEOROLOGICAL INFORMATION PROVIDED

1	Associated MET Office	TOKYO
2	Hours of service MET Office outside hours	H24(TOKYO)
3	Office responsible for TAF preparation Periods of validity	Nil
4	Trend forecast Interval of issuance	Nil
5	Briefing/ consultation provided	Briefing is available upon inquiry at TOKYO.
6	Flight documentation Language(s) used	C En
7	Charts and other information available for briefing or consultation	S ₆ , U ₈₅ , U ₇ , U ₅ , U ₃ , U ₂₅ , U ₂ /T _r , P _S , P ₅ , P ₃ , P ₂₅ , P _{SWE} , P _{SWF} , P _{SWG} , P _{SWI} , P _{SWM} , P _{SW} (domestic), E, C, W _E , W _F , W _G , W _I , W, N
8	Supplementary equipment available for providing information	Nil
9	ATS units provided with information	RADIO
10	Additional information (limitation of service, etc.)	Nil

RJAN AD 2.12 RUNWAY PHYSICAL CHARACTERISTICS

Designations RWY NR	TRUE BRG	Dimensions of RWY(M)	Strength(PCN) and Surface of RWY	THR coordinates THR geoid undulation	THR elevation and highest elevation of TDZ of precision APP RWY
1	2	3	4	5	6
11	102.32°	800x25	PCN 10/F/B/Y/T Asphalt Concrete	342213.11N/1391551.44E 133ft	THR ELEV: 89FT
29	282.32°	800x25	PCN 10/F/B/Y/T Asphalt Concrete	342207.57N/1391622.04E 132ft	THR ELEV: 92FT
Slope of RWY		Strip Dimensions(M)	RESA(Overrun) Dimensions(M)	Remarks	
7		10	11	14	
See Below Figure		920x60	40x50	Nil	
		920x60	40x50		

The diagram illustrates the elevation profile of the runway. RWY11 begins at an elevation of 89ft at the 0m mark and rises to 94ft at the 150m mark, following a 1.021% upward slope. The central portion of the runway, from 150m to 510m, is designated as 'LEVEL'. RWY29 begins at an elevation of 94ft at the 510m mark and descends to 92ft at the 800m mark, following a 0.191% downward slope. The total length of the runway is 800m.

RJAN AD 2.13 DECLARED DISTANCES

RWY Designator	TORA (m)	TODA (m)	ASDA (m)	LDA (m)	Remarks
1	2	3	4	5	6
11	800	800	800	800	Nil
29	800	800	800	800	Nil

RJAN AD 2.14 APPROACH AND RUNWAY LIGHTING

RWY Designator	APCH LGT type LEN INTST	RTHL Color WBAR	PAPI (VASIS) Angle DIST FM THR MEHT	RTZL LEN	RCLL LEN Spacing Color INTST	REDL LEN Spacing Color INTST	RENL Color WBAR	STWL LEN Color
1	2	3	4	5	6	7	8	9
11	Nil	Nil	PAPI 4.0°/LEFT 104.2m 28FT	Nil	Nil	Nil	Nil	Nil
29	Nil	Nil	PAPI 4.0°/LEFT 116.6m 28FT	Nil	Nil	Nil	Nil	Nil
Remarks								
10								
RWY THR ID LGT for RWY 11/29 THR (Color: White)								

RJAN AD 2.15 OTHER LIGHTING, SECONDARY POWER SUPPLY

1	ABN/IBN location, characteristics and hours of operation	Nil
2	LDI location and LGT Anemometer location and LGT	LDI : Nil Anemometer : RWY 11: 64m from RWY 11 THR, LGTD RWY 29 : 98m from RWY 29 THR, LGTD
3	TWY edge and center line lighting	Nil
4	Secondary power supply / switch-over time	Within 15 sec: PAPI, RWY THR ID LGT
5	Remarks	Nil

RJAN AD 2.16 HELICOPTER LANDING AREA

Nil

RJAN AD 2.17 ATS AIRSPACE

Designation and lateral limits		Vertical limits (ft)	Airspace classification	ATS unit call sign Language	Remarks
1		2	3	4	6
Niijima Information Zone	Area within a radius of 5nm(9km) of Niijima ARP	3000 or below	E	Izu Radio En	

RJAN AD 2.18 ATS COMMUNICATION FACILITIES

Service designation	Call sign	Frequency	Hours of operation	Remarks
1	2	3	4	5
AFIS	Izu Radio	124.3MHz	2330-0815 [2330 20th APR - 0815 10th MAY, 2330 15th JUL - 0815 31st AUG] 2330-0730 [2330 31st AUG - 0730 20th APR, 2330 10th MAY - 0730 15th JUL]	Operated by New Chitose Airport Office.

RJAN AD 2.19 RADIO NAVIGATION AND LANDING AIDS

Type of aid (VOR declination)	ID	Frequency	Hours of operation	Position of transmitting antenna coordinates	Elevation of DME transmitting antenna	Remarks
1	2	3	4	5	6	7
MSAS		1575.42MHz	H24			Transmitting antennas are satellite based.

RJAN AD 2.20 LOCAL TRAFFIC REGULATIONS

1. Airport regulations

Nil

2. Taxiing to and from stands

Nil

3. Parking area for small aircraft(General aviation)

Nil

4. Parking area for helicopters

Nil

5. Apron - taxiing during winter conditions

Nil

6. Taxiing - limitations

Nil

7. School and training flights - technical test flights - use of runways

In principle, no flight training is permitted.
To apply for an exception, the administrator's prior permission is required.

8. Helicopter traffic - limitation

Nil

9. Removal of disabled aircraft from runways

Nil

RJAN AD 2.21 NOISE ABATEMENT PROCEDURES

Nil

RJAN AD 2.22 FLIGHT PROCEDURES**TAKE OFF MINIMA**

	RWY	REDL and RCLL	REDL or RCLL or RCL marking	NIL (DAY ONLY)
		CEIL - VIS	CEIL - VIS	CEIL - VIS
Multi-Engine ACFT with TKOF ALTN AP filed	11	-	0 - 400m	0 - 500m
	29	-	400 - 2400m	400 - 2400m
OTHER	11	AVBL LDG MINIMA		
	29			

RJAN AD 2.23 ADDITIONAL INFORMATION

Nil

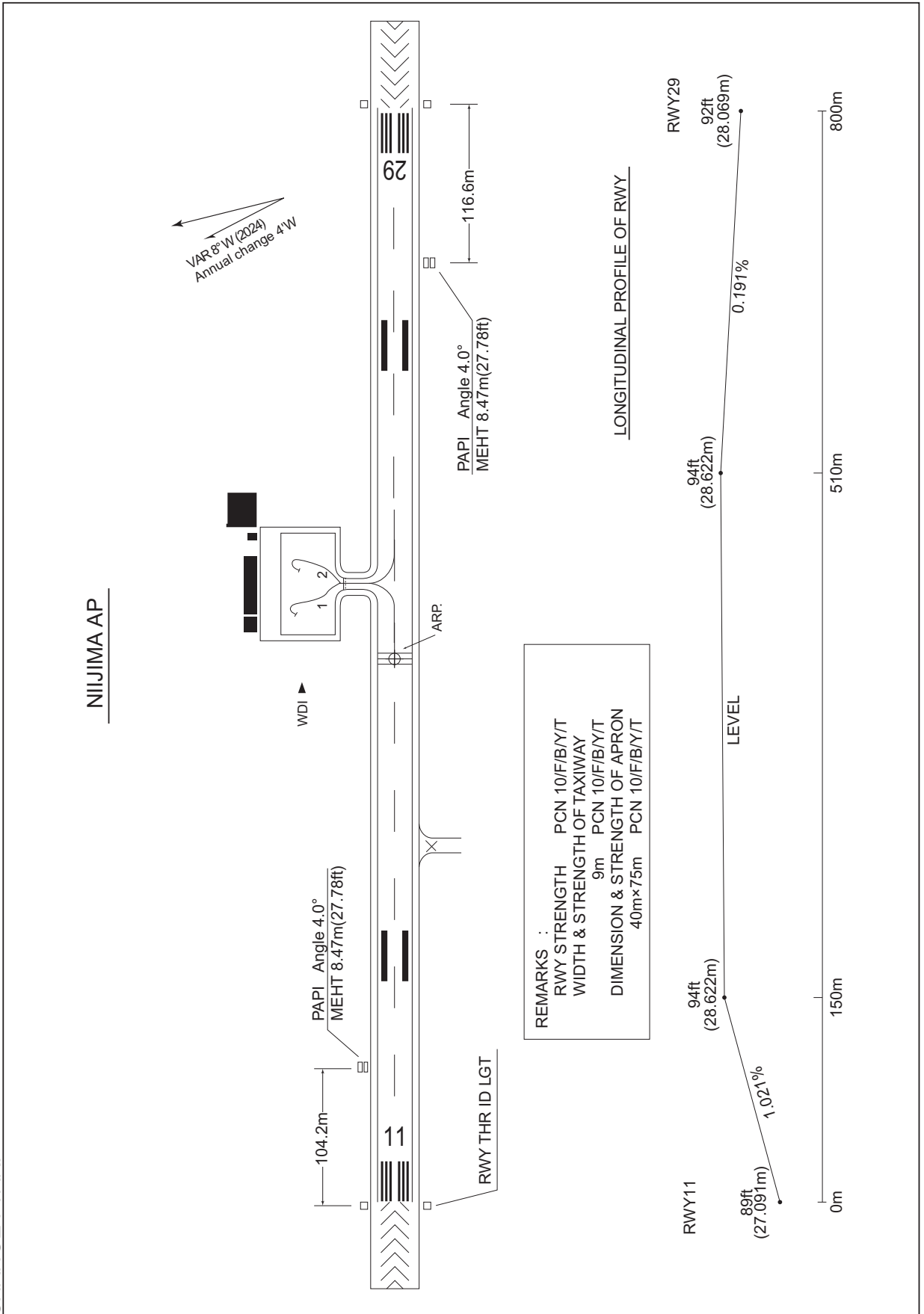
RJAN AD 2.24 CHARTS RELATED TO AN AERODROME

Aerodrome Chart Standard Departure Chart -instrument (OSHIMA) Instrument Approach Chart (RNP RWY11) Instrument Approach Chart (RNP RWY29) Other Chart (Visual REP) Other Chart (MVA CHART)

RJAN / NIIJIMA

AD CHART

CHANGE : VAR.



INTENTIONALLY LEFT BLANK

STANDARD DEPARTURE CHART - INSTRUMENT

RJAN / NIIJIMA

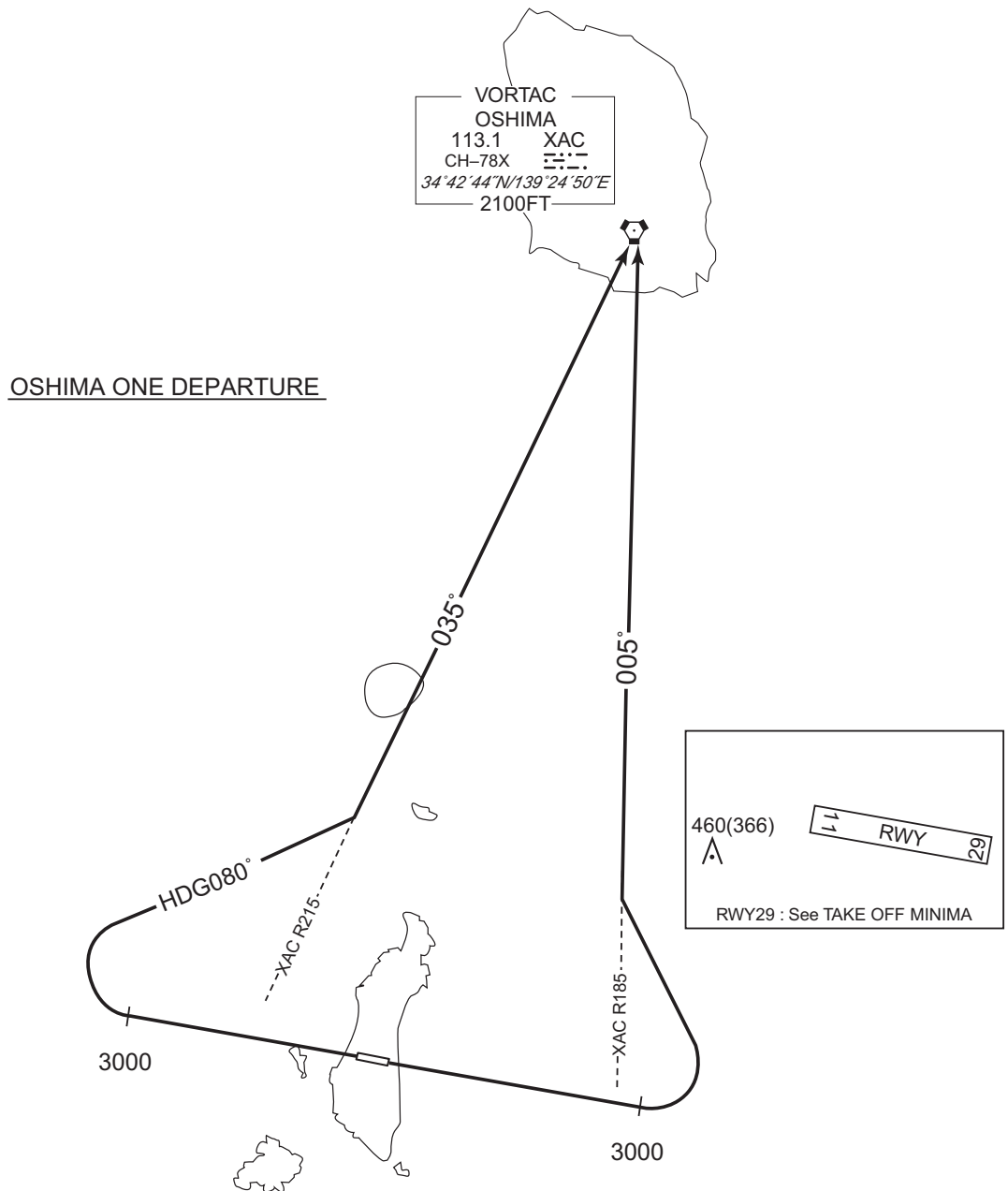
SID

OSHIMA ONE DEPARTURE

RWY11 : Climb RWY HDG to 3000FT, turn left, via XAC R185 to XAC VORTAC.

RWY29 : Climb RWY HDG to 3000FT, turn right HDG080° to intercept and proceed via XAC R215 to XAC VORTAC.

Note RWY11: 5.0% climb gradient required up to 3000FT due to airspace restrictions only.
RWY29: 5.0% climb gradient required up to 3000FT due to airspace restrictions only.

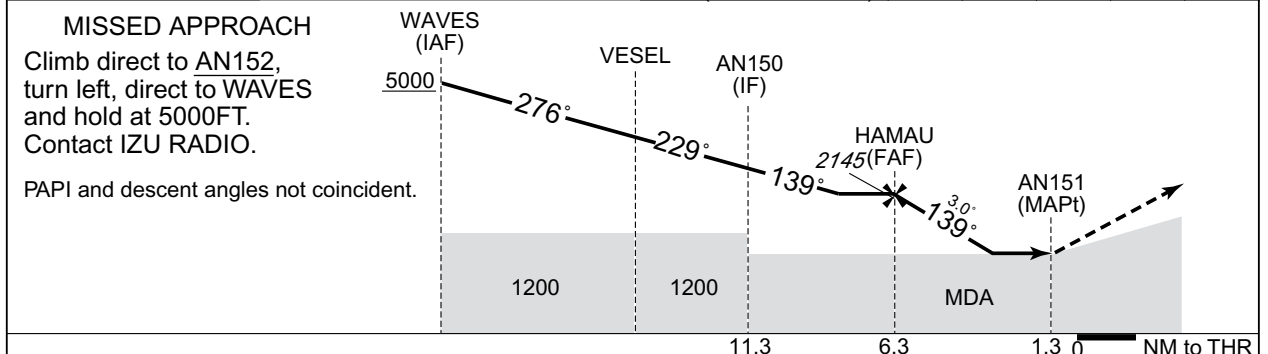
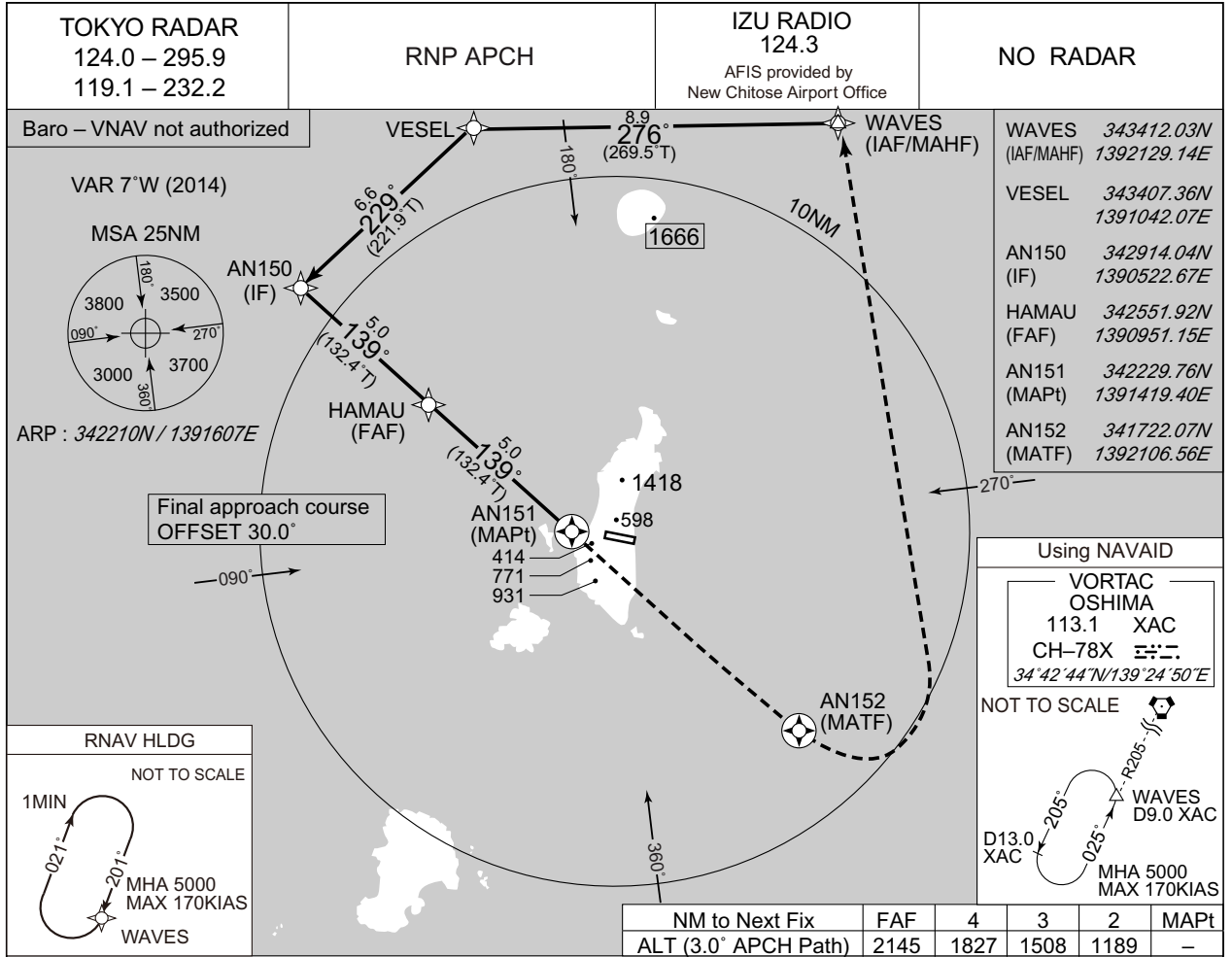


INTENTIONALLY LEFT BLANK

INSTRUMENT APPROACH CHART

RJAN / NIIJIMA

RNP RWY11



Missed APCH climb gradient MNM 5.0%

MINIMA		THR elev. 89	AD elev. 94			
CAT	LNAV/VNAV		LNAV	CIRCLING		
	DA(H)	CMV	MDA(H)	CMV	MDA(H)	VIS
A	Not applicable		1000 (906)	1500	1380 (1286)	1600
B						
C						
D			-	-	-	-

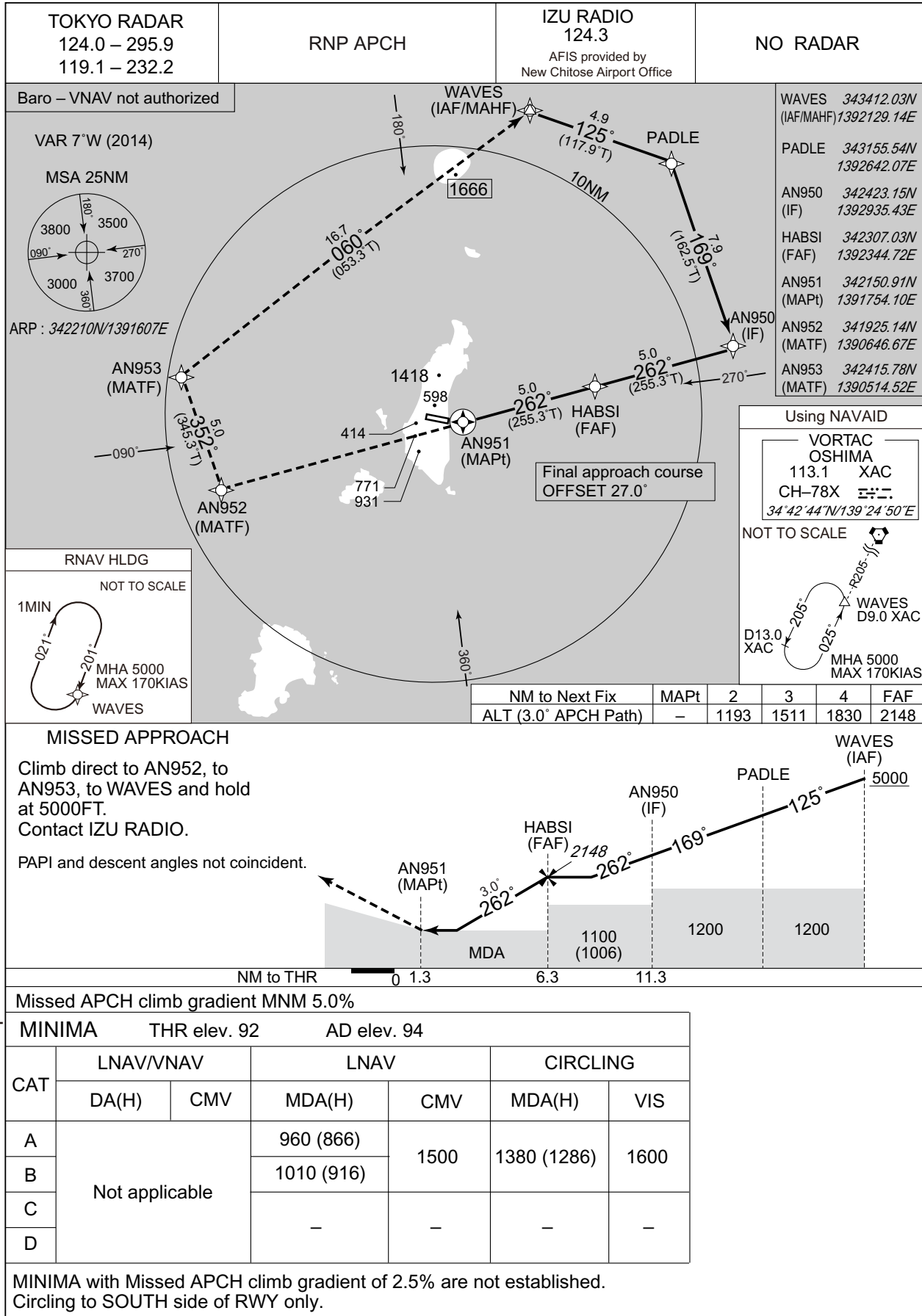
MINIMA with Missed APCH climb gradient of 2.5% are not established.
Circling to SOUTH side of RWY only.

CHANGE:PROC renamed. Requirement for RNP.

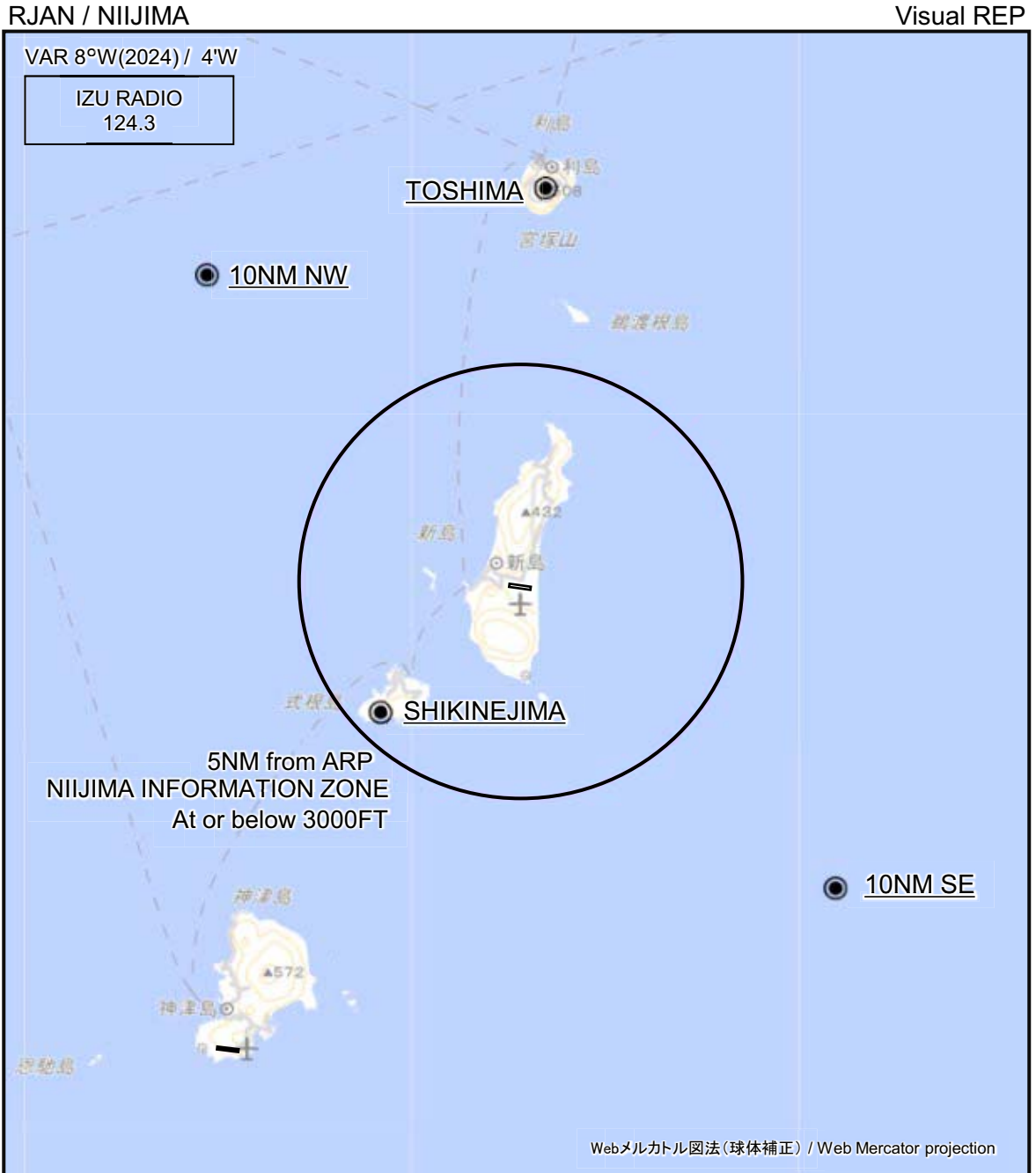
INSTRUMENT APPROACH CHART

RJAN / NIIJIMA

RNP RWY29



CHANGE:PROC renamed. Requirement for RNP.



※図中に標高を示す数字がある場合、単位はメートル(m)である。The unit of measurement used to express elevation is meter(m).

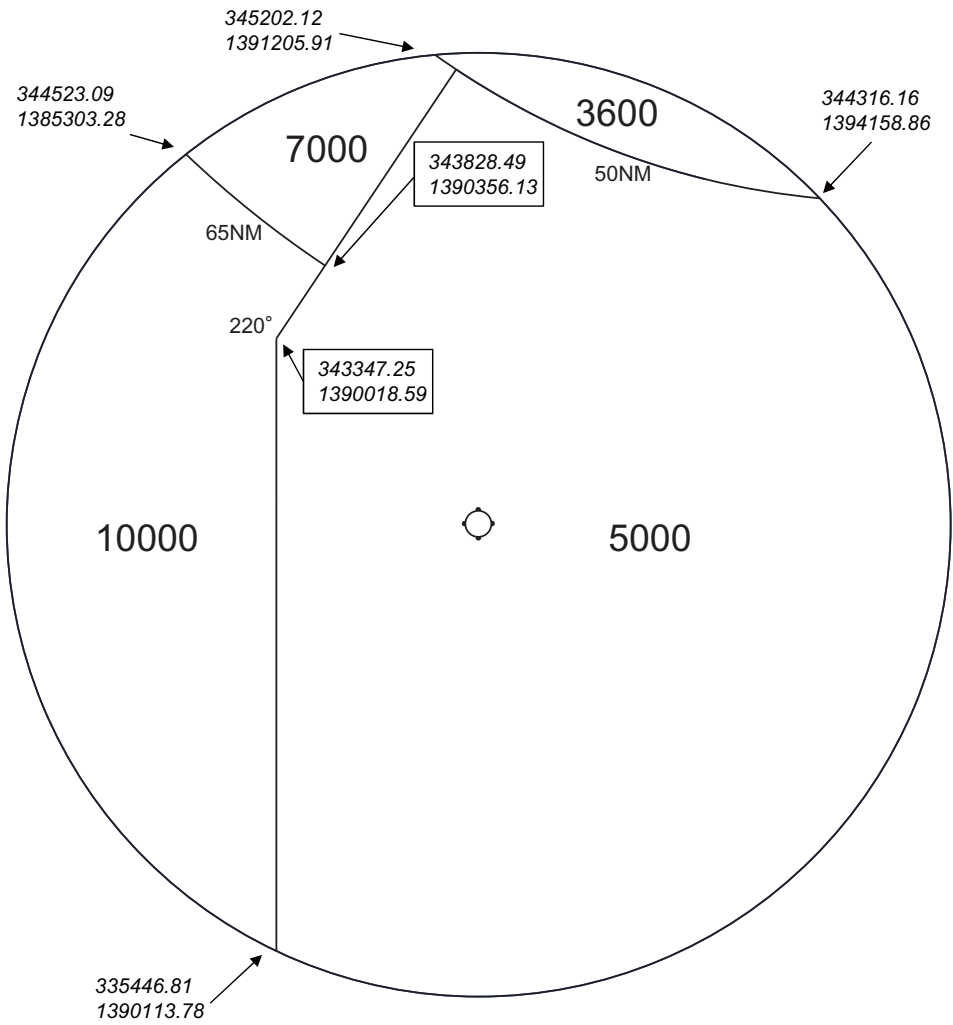
Call sign	BRG / DIST from ARP	Remarks
利島 Toshima	003°T / 9.0NM	宮塚山 Mt. Miyatsuka
10NM NW	315°T / 10.0NM	海上 Over the sea
式根島 Shikinejima	227°T / 4.4NM	御釜湾 Mikawa Bay
10NM SE	135°T / 10.0NM	海上 Over the sea

CHANGE : VAR.

RJAN / NIIJIMA

Minimum Vectoring Altitude CHART

VAR8°W(2019)



- CENTER : 342210N/1391607E(ARP)
- 342210N/1391607E RADIUS : 30NM
- RADIAL & DISTANCE FM 353312N/1394652E(TOKYO ARP)

CHANGE : VAR.