

STANDARD DEPARTURE CHART - INSTRUMENT

RJAW / IWOTO

SID and TRANSITION

IWO TWO DEPARTURE

RWY 07/25 : Climb RWY HDG to 1000FT or above, then proceed as directed by ATC.
Remarks: IWO TWO DEPARTURE is not illustrated.

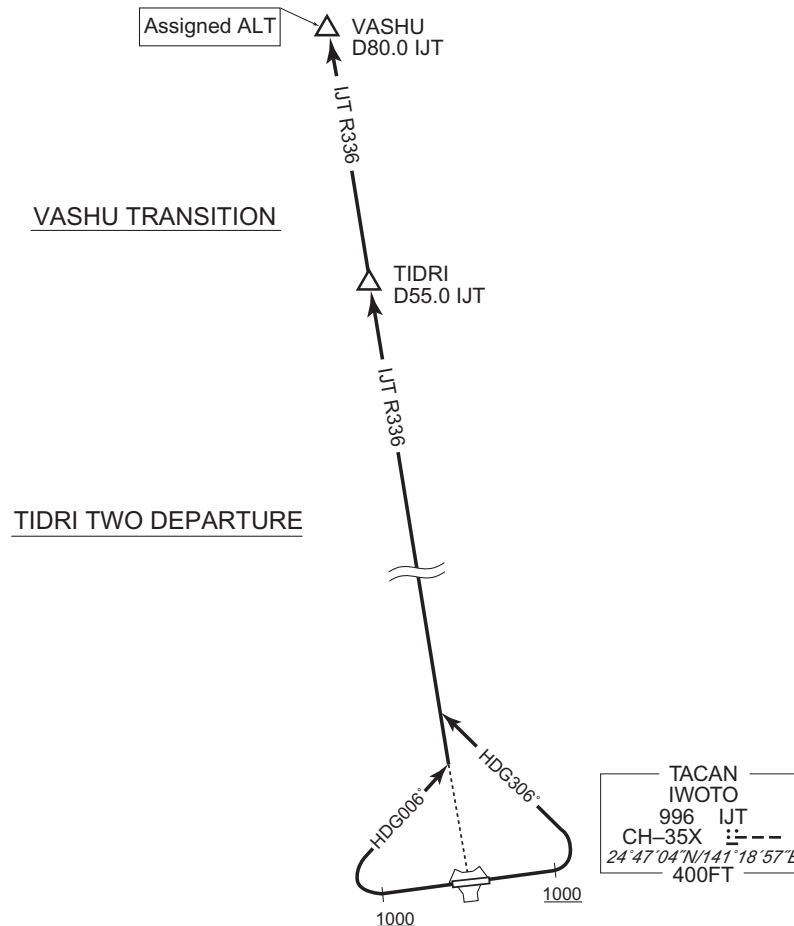
TIDRI TWO DEPARTURE

RWY 07 : Climb RWY HDG to 1000FT or above, turn left HDG306° to intercept and proceed via IJT R336 to TIDRI.
RWY 25 : Climb RWY HDG to 1000FT or above, turn right HDG006° to intercept and proceed via IJT R336 to TIDRI.

VASHU TRANSITION

From over TIDRI, proceed via IJT R336 to VASHU.
Cross VASHU at assigned altitude.

CHANGE : PROC renamed. IWOTO NDB(OX) abolished.



STANDARD DEPARTURE CHART - INSTRUMENT

RJAW /IWOTO

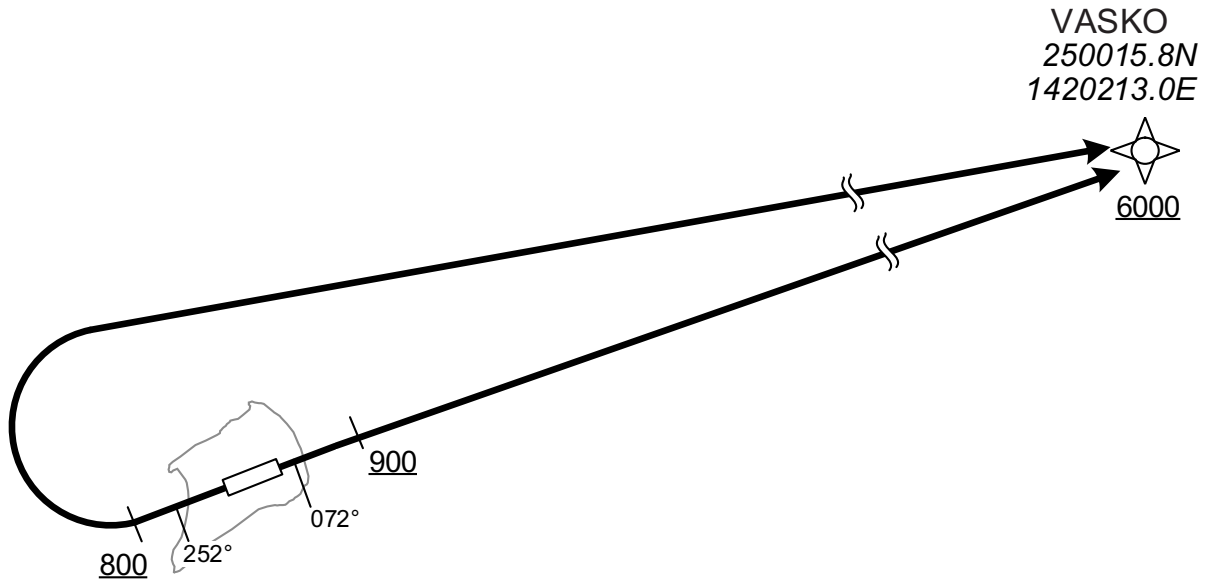
RNAV SID

VASKO TWO DEPARTURE

RNP1

Note GNSS required.

VAR 4°W



RWY07 : Climb on HDG072° at or above 900FT, direct to VASKO at or above 6000FT.
 RWY25 : Climb on HDG252° at or above 800FT, turn right direct to VASKO at or above 6000FT.

RWY07

Serial Number	Path Descriptor	Waypoint Identifier	Fly Over	Course °M(°T)	Magnetic Variation	Distance (NM)	Turn Direction	Altitude (FT)	Speed (KIAS)	Vertical Angle	Navigation Specification
001	VA	—	—	072 (067.8)	-3.9	—	—	+900	—	—	RNP1
002	DF	VASKO	—	—	-3.9	—	—	+6000	—	—	RNP1

RWY25

Serial Number	Path Descriptor	Waypoint Identifier	Fly Over	Course °M(°T)	Magnetic Variation	Distance (NM)	Turn Direction	Altitude (FT)	Speed (KIAS)	Vertical Angle	Navigation Specification
001	VA	—	—	252 (247.8)	-3.9	—	—	+800	—	—	RNP1
002	DF	VASKO	—	—	-3.9	—	R	+6000	—	—	RNP1

CHANGE : PROC renamed. ALT restriction after DEP FM RWY07.

STANDARD ARRIVAL CHART - INSTRUMENT

RJAW / IWOTO

STAR

KANGO ARRIVAL

From over VASHU, proceed via IJT R336 to IJT R336/15.0DME, then turn right via IJT 15.0DME counterclockwise ARC to KANGO.

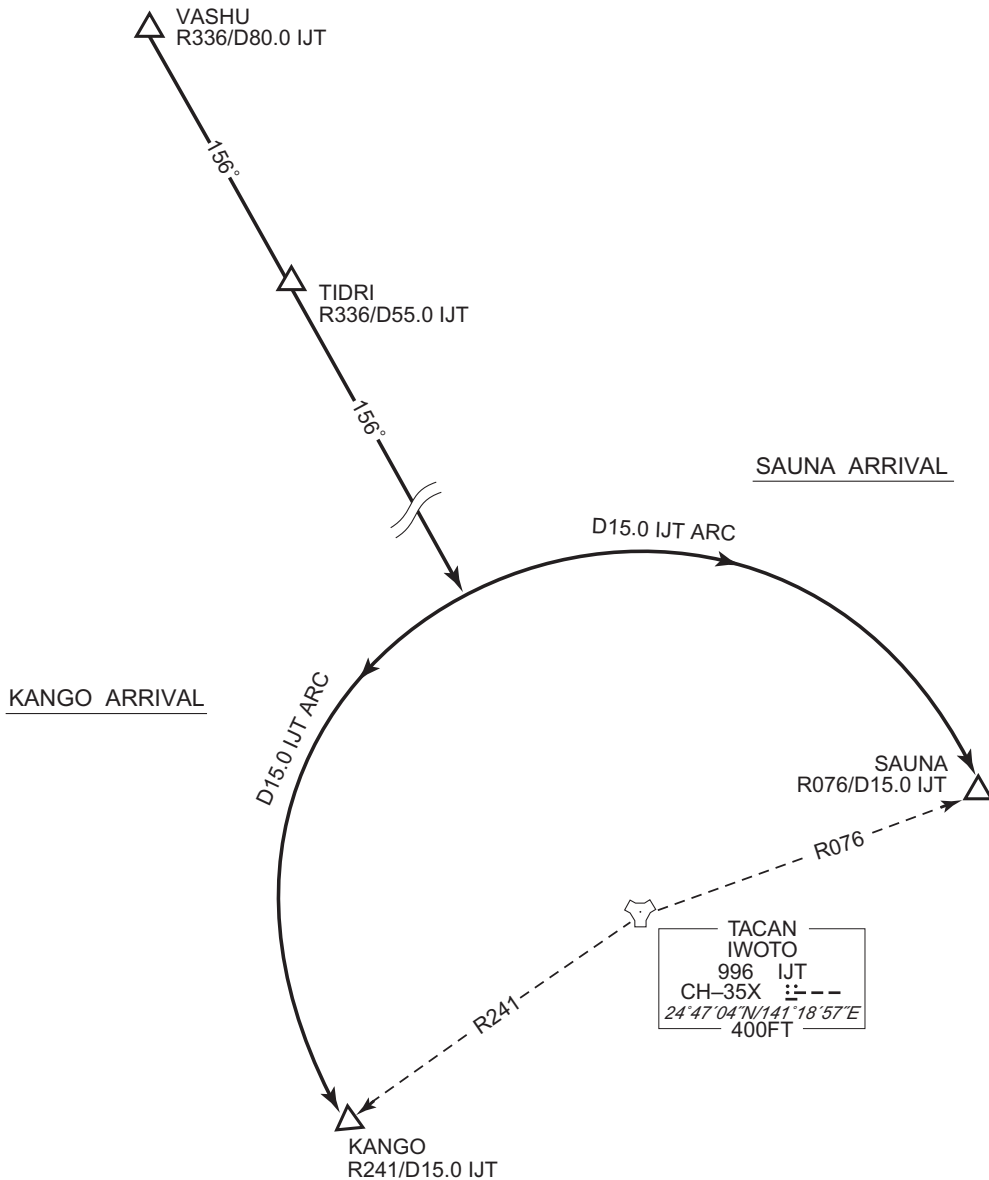
Cross TIDRI at altitude specified by ATC.

SAUNA ARRIVAL

From over VASHU, proceed via IJT R336 to IJT R336/15.0DME, then turn left via IJT 15.0DME clockwise ARC to SAUNA.

Cross TIDRI at altitude specified by ATC.

CHANGE : CHIDORI ARRIVAL abolished. KANGO ARRIVAL SAUNA ARRIVAL established.



STANDARD ARRIVAL CHART - INSTRUMENT

RJAW /IWOTO

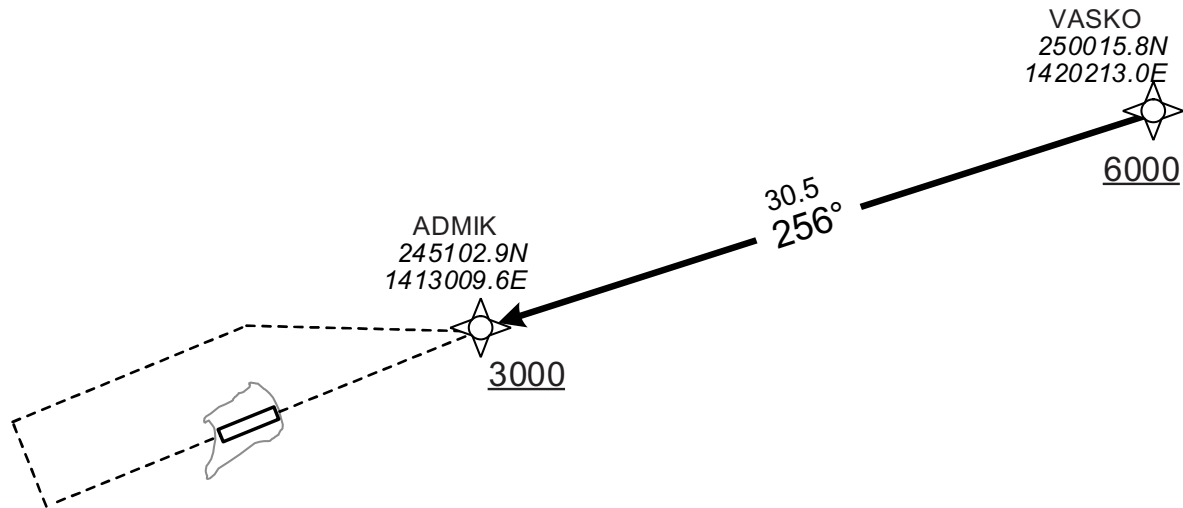
RNAV STAR

VASKO ARRIVAL

RNP1

Note GNSS required.

VAR 4°W



From VASKO at or above 6000FT, to ADMIK at or above 3000FT.

Serial Number	Path Descriptor	Waypoint Identifier	Fly Over	Course °M(°T)	Magnetic Variation	Distance (NM)	Turn Direction	Altitude (FT)	Speed (KIAS)	Vertical Angle	Navigation Specification
001	IF	VASKO	—	—	-3.9	—	—	+6000	—	—	RNP1
002	TF	ADMIK	—	256 (252.5)	-3.9	30.5	—	+3000	—	—	RNP1

CHANGE : Navigation Specification(Basic RNP1 → RNP1).

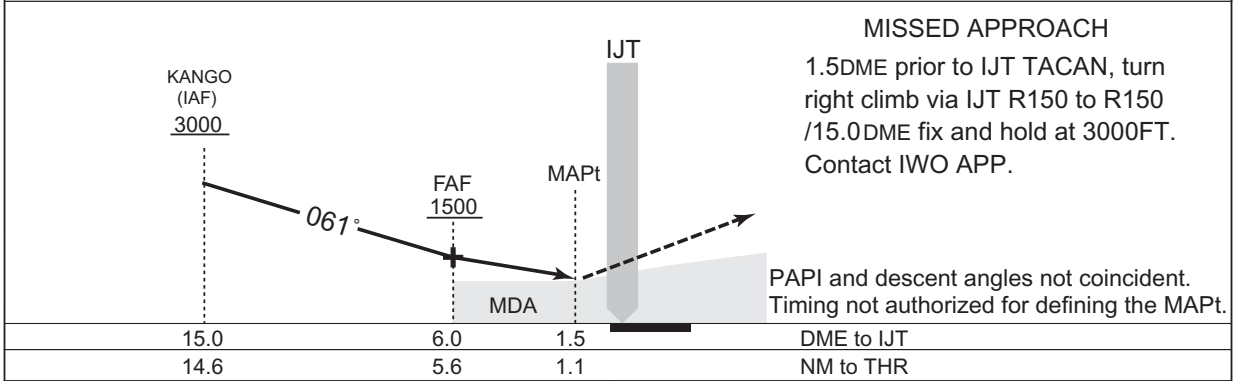
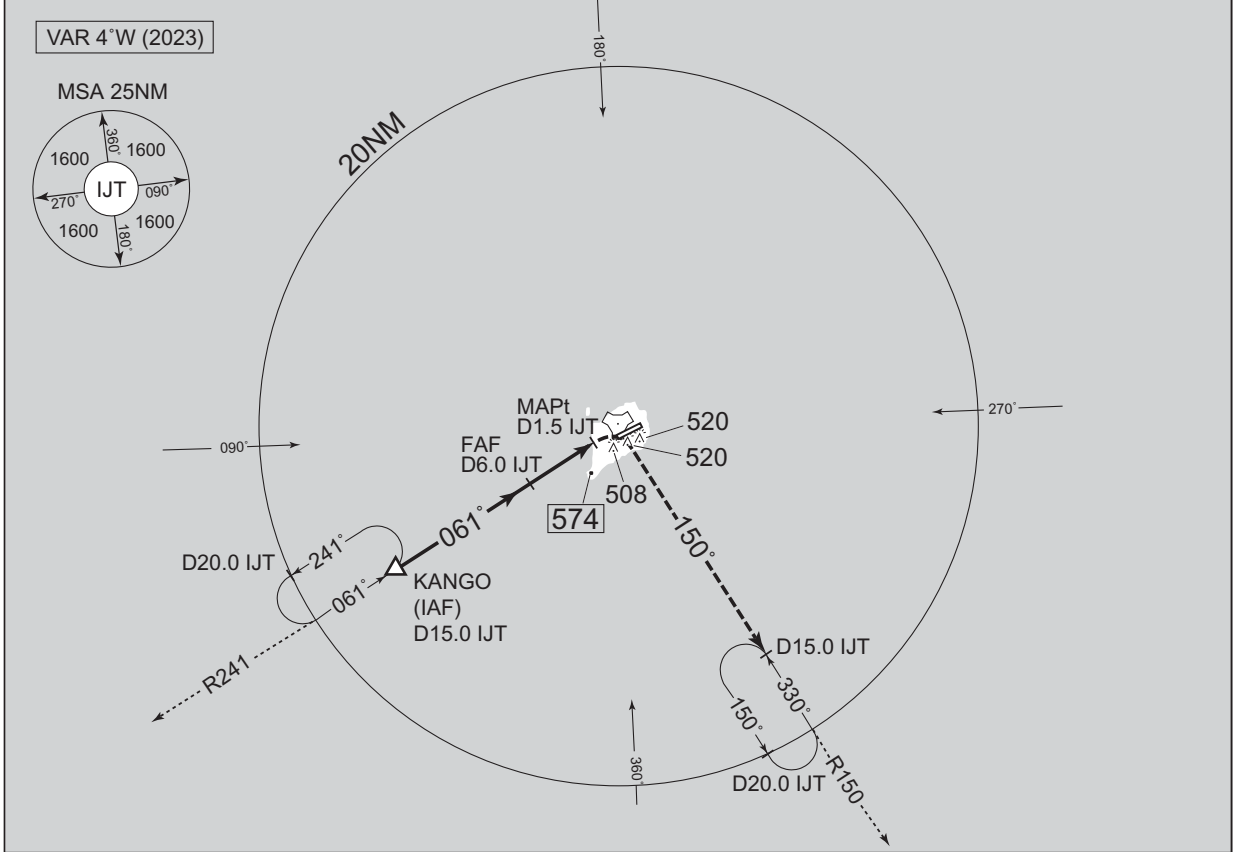
INSTRUMENT APPROACH CHART

RJAW / IWOTO

TACAN Z RWY07

IWO APP 138.3 – 284.6	IWOTO TACAN 996 IJT CH – 35X 24°47'04"N/141°18'57"E	IWO TOWER 126.2 – 228.2	RADAR AVAILABLE CALL IWO APP
--------------------------	--	----------------------------	------------------------------------

CHANGE : Shape of PROC course for profile view. PROC ALT abolished. ALT(3.0° APCH Path) abolished. MINIMA. THR elev. AD elev.



15.0	6.0	1.5	DME to IJT
14.6	5.6	1.1	NM to THR

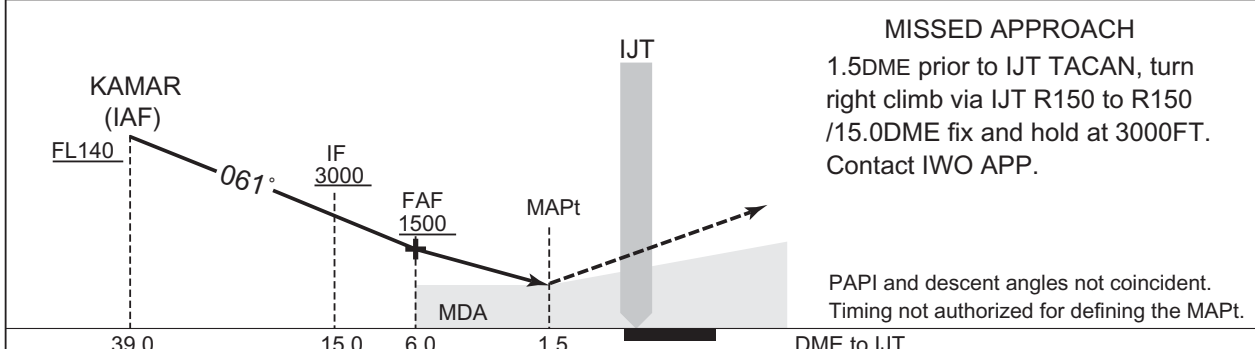
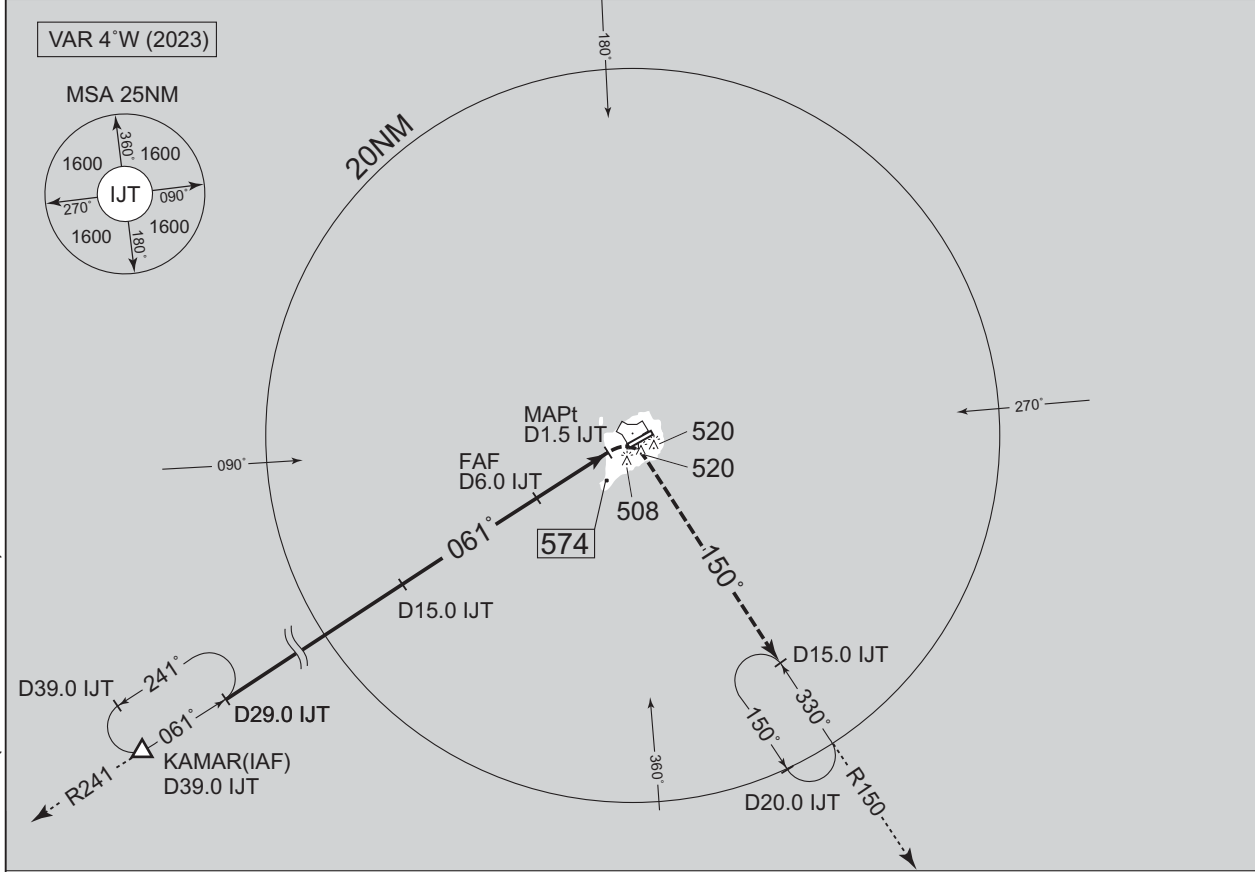
MINIMA		THR elev. 395	AD elev. 419	
CAT	CIRCLING			
	MDA(H)	RVR/CMV	MDA(H)	VIS
A	840 (445)	1500	840 (421)	1600
B			870 (451)	
C		1800	970 (551)	2400
D		2000		3200

INSTRUMENT APPROACH CHART

RJAW / IWOTO

TACAN Y RWY07

IWO APP 138.3 – 284.6	IWOTO TACAN 996 IJT CH-35X --- 24°47'04"N/141°18'57"E	IWO TOWER 126.2 – 228.2	RADAR AVAILABLE CALL IWO APP
--------------------------	--	----------------------------	------------------------------------



39.0	15.0	6.0	1.5	
38.6	14.6	5.6	1.1	DME to IJT NM to THR

MINIMA		THR elev. 395	AD elev. 419	
CAT			CIRCLING	
	MDA(H)	RVR/ CMV	MDA(H)	VIS
A	840 (445)	1500	840 (421)	1600
B			870 (451)	
C				1800
D			2000	970 (551)

CHANGE : Shape of PROC course for profile view. PROC ALT abolished. ALT (3.0° APCH Path) abolished. MINIMA. THR elev. AD elev.

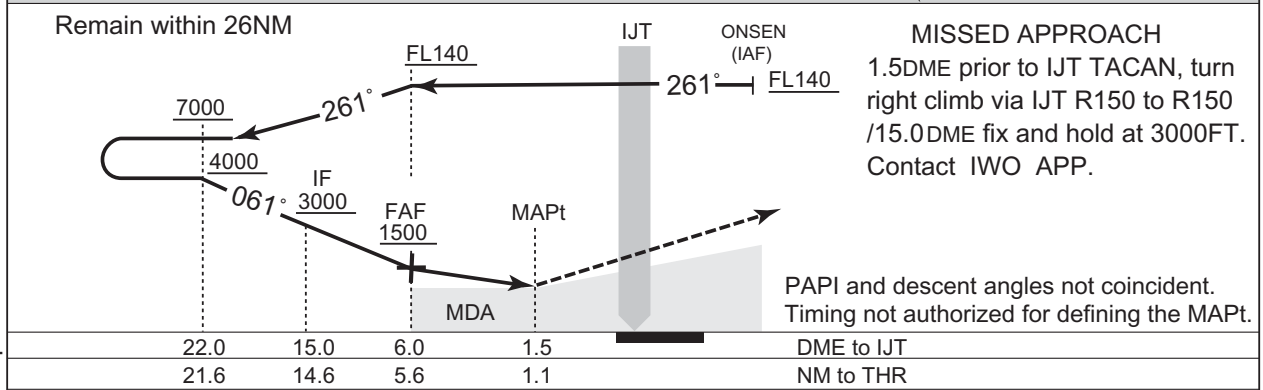
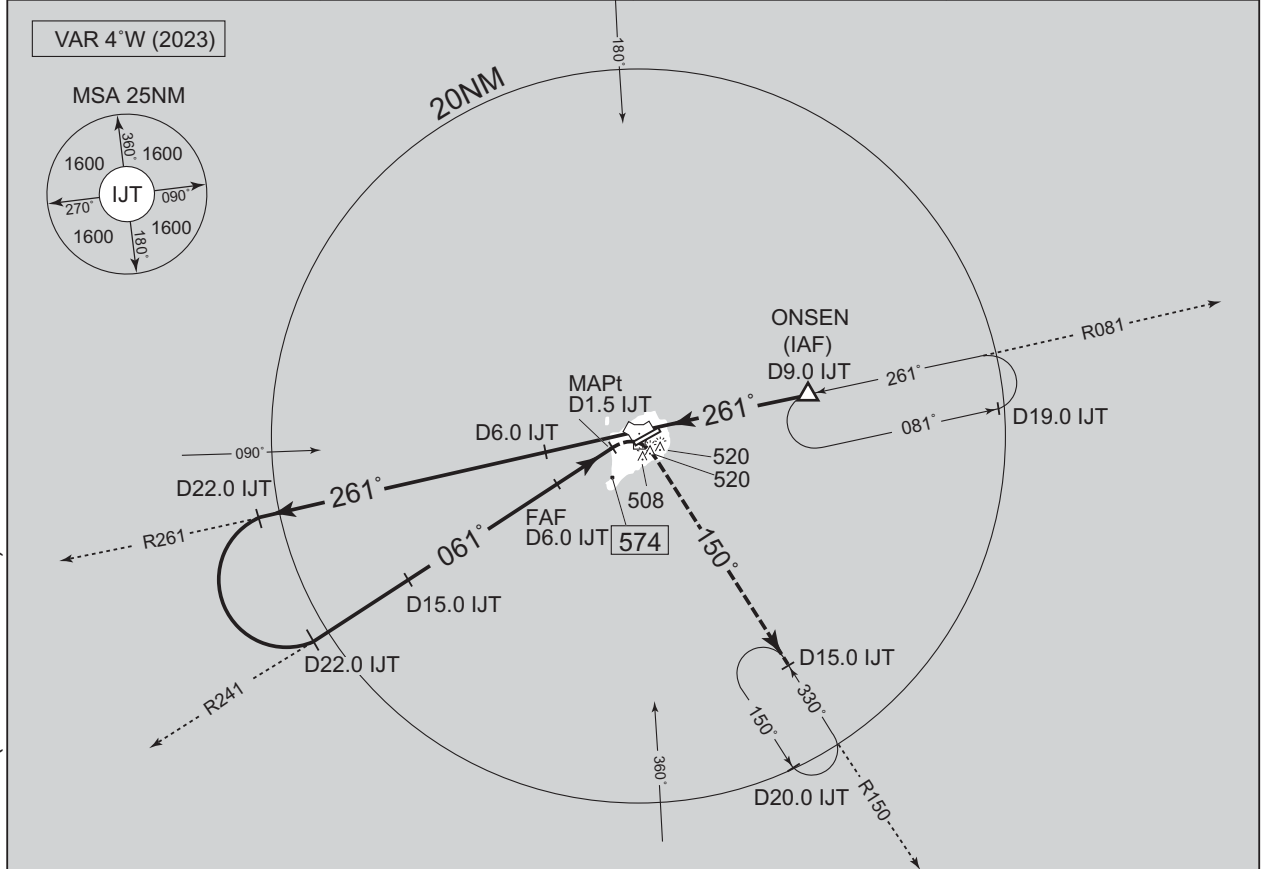
INSTRUMENT APPROACH CHART

RJAW / IWOTO

TACAN X RWY07

IWO APP 138.3 – 284.6	IWOTO TACAN 996 IJT CH – 35X --- 24°47'04"N/141°18'57"E	IWO TOWER 126.2 – 228.2	RADAR AVAILABLE CALL IWO APP
--------------------------	--	----------------------------	------------------------------------

CHANGE : Shape of PROC course for profile view. PROC ALT abolished. ALT(3.0° APCH Path) abolished. MINIMA. THR elev. AD elev.



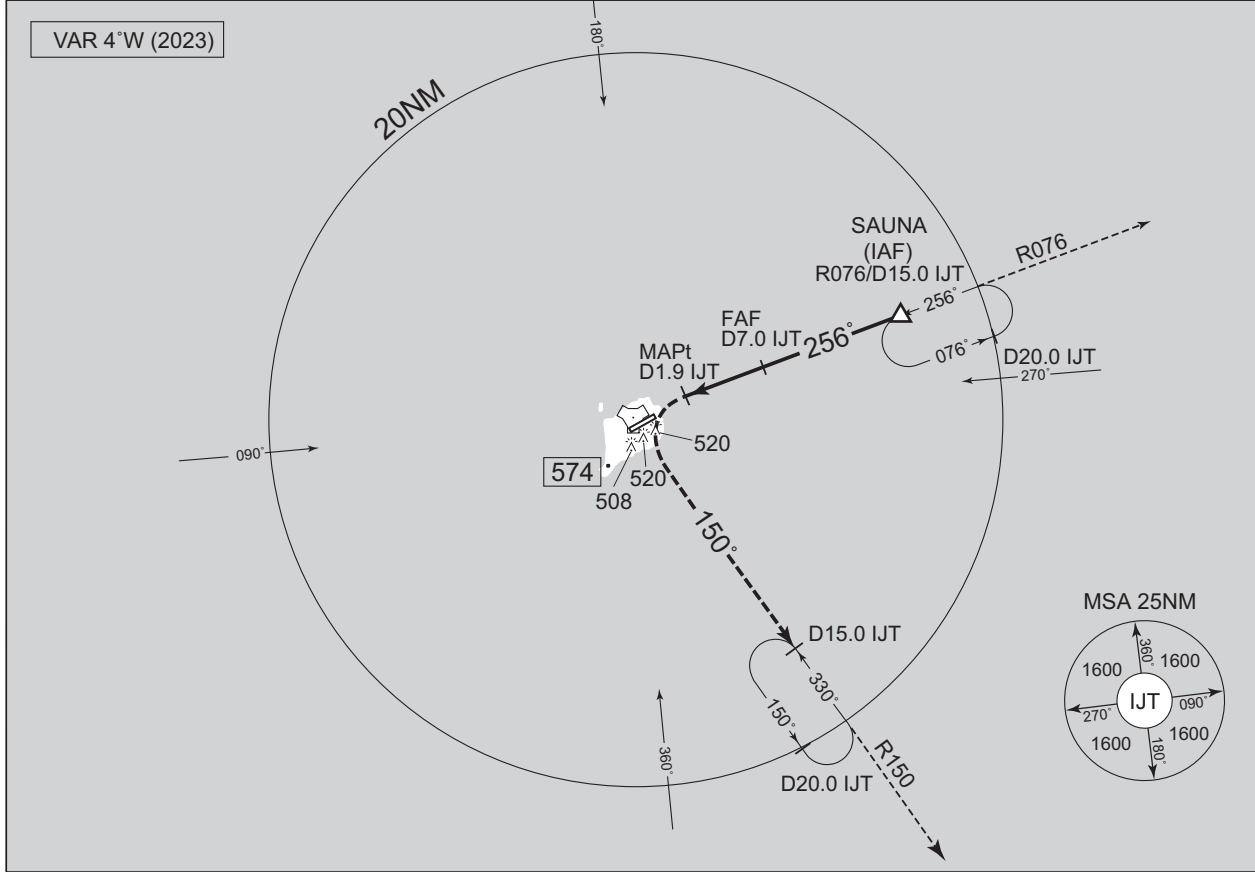
MINIMA		THR elev. 395	AD elev. 419	
CAT	CIRCLING			
	MDA(H)	RVR/CMV	MDA(H)	VIS
A	840 (445)	1500	840 (421)	1600
B			870 (451)	
C			1800	2400
D			2000	

INSTRUMENT APPROACH CHART

RJAW / IWOTO

TACAN Z RWY25

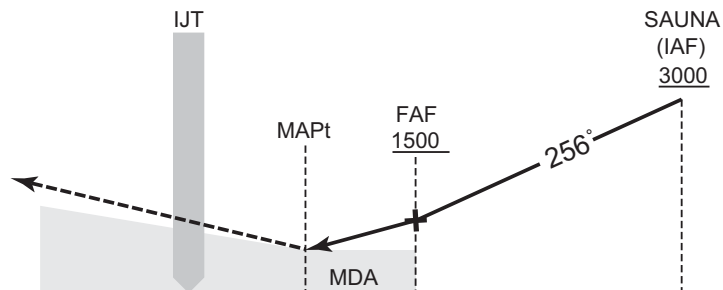
IWO APP 138.3 – 284.6	IWOTO TACAN 996 IJT CH-35X --- 24°47'04"N/141°18'57"E	IWO TOWER 126.2 – 228.2	RADAR AVAILABLE CALL IWO APP
--------------------------	--	----------------------------	------------------------------------



MISSED APPROACH

1.9DME prior to IJT TACAN, turn left climb via IJT R150 to R150 /15.0DME fix and hold at 3000FT. Contact IWO APP.

PAPI and descent angles not coincident.
Timing not authorized for defining the MAPt.



DME to IJT	1.9	7.0	15.0
NM to THR	0.8	5.9	13.9

MINIMA		THR elev. 419	AD elev. 419	
CAT			CIRCLING	
	MDA(H)	RVR/CMV	MDA(H)	VIS
A	800 (381)	1500	820 (401)	1600
B			870 (451)	
C				2400
D			970 (551)	3200

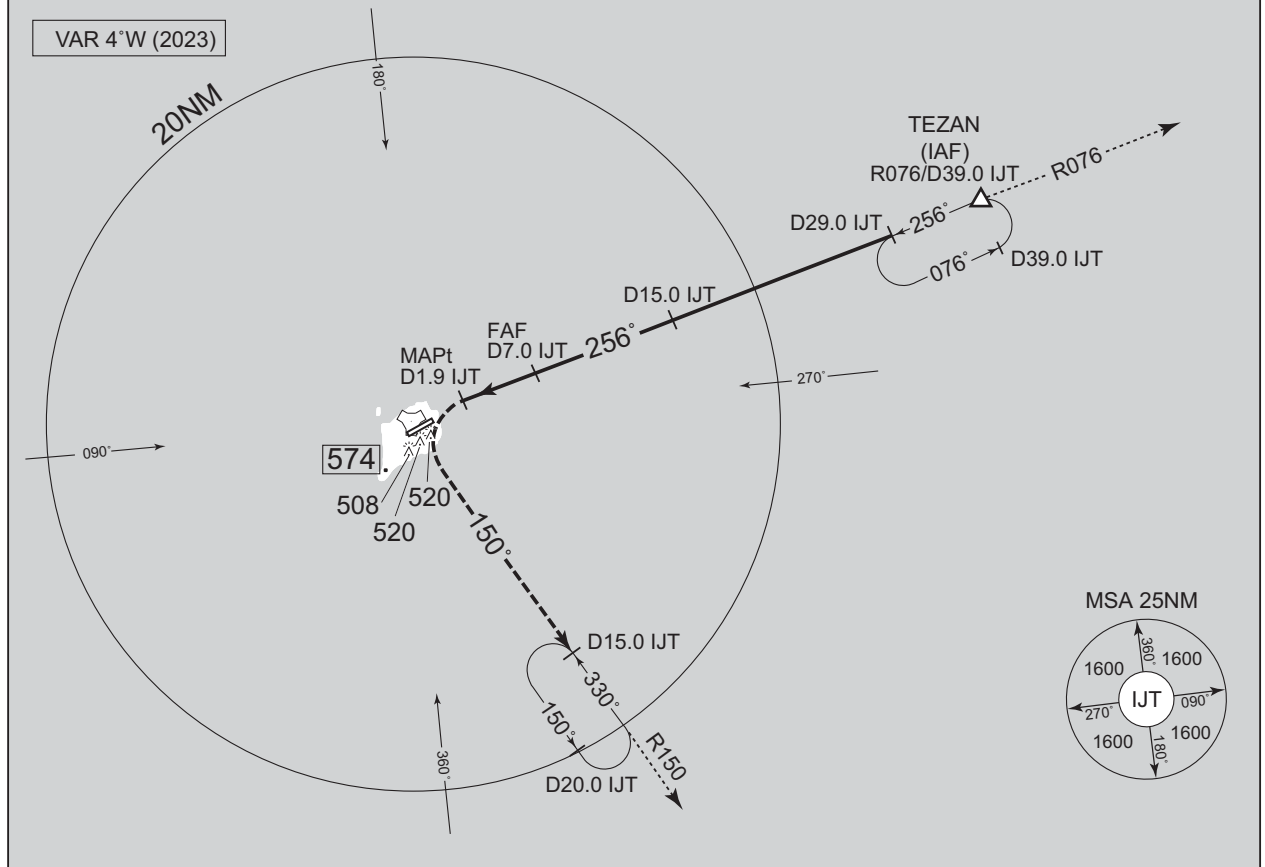
CHANGE : PROC ALT abolished. ALT(3.0° APCH Path) abolished. MINIMA. THR elev. AD elev.

INSTRUMENT APPROACH CHART

RJAW / IWOTO

TACAN Y RWY25

IWO APP 138.3 – 284.6	IWOTO TACAN 996 IJT CH-35X --- 24°47'04"N/141°18'57"E	IWO TOWER 126.2 – 228.2	RADAR AVAILABLE CALL IWO APP
--------------------------	--	----------------------------	------------------------------------

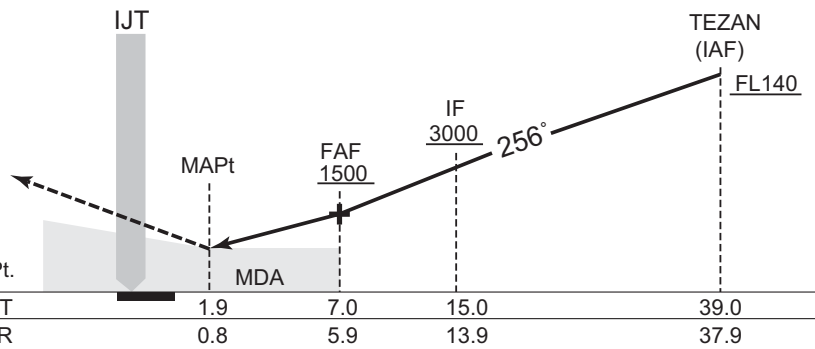


CHANGE : PROC ALT abolished. ALT(3.0° APCH Path) abolished. MINIMA. THR elev. AD elev.

MISSED APPROACH

1.9DME prior to IJT TACAN, turn left climb via IJT R150 to R150 /15.0DME fix and hold at 3000FT. Contact IWO APP.

PAPI and descent angles not coincident. Timing not authorized for defining the MAPt.



DME to IJT	1.9	7.0	15.0	39.0
NM to THR	0.8	5.9	13.9	37.9

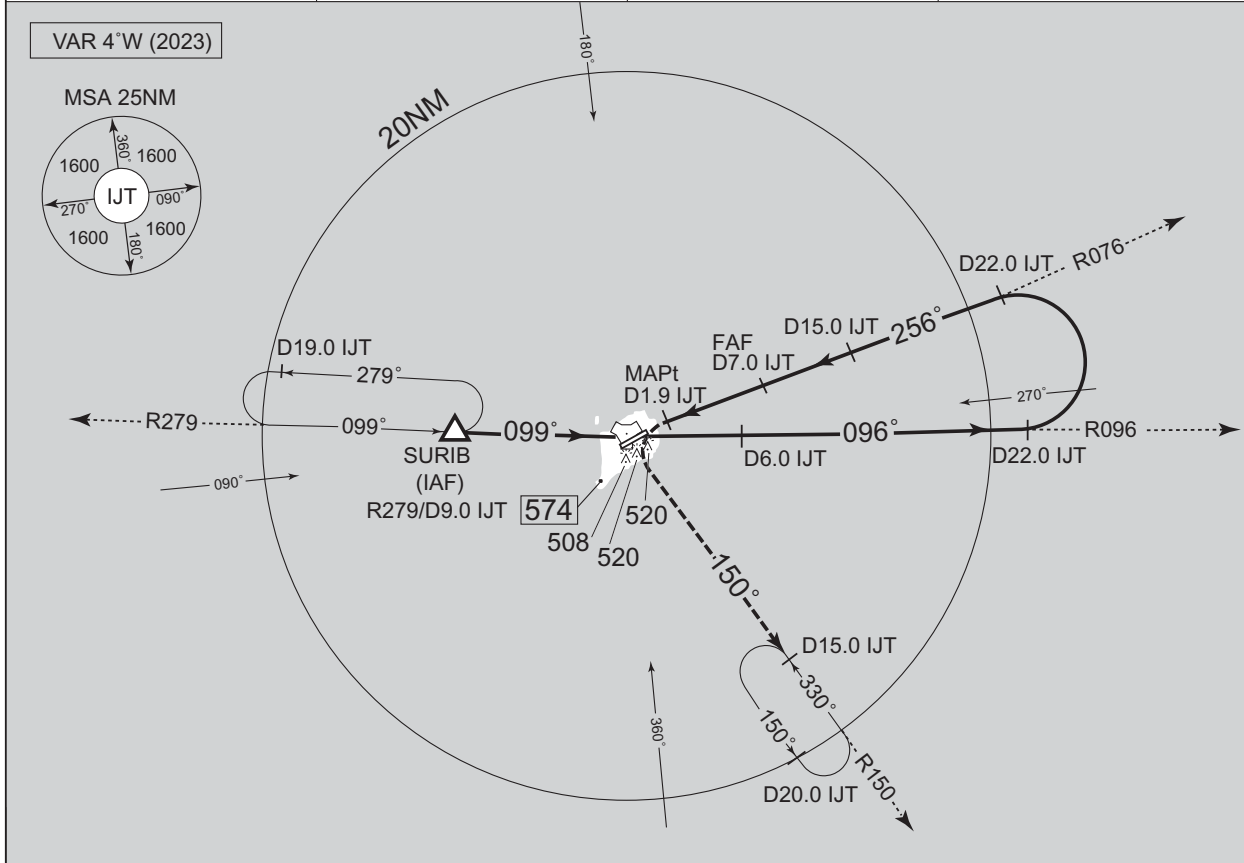
MINIMA		THR elev. 419	AD elev. 419	
CAT	CIRCLING			
	MDA(H)	RVR/CMV	MDA(H)	VIS
	800 (381)	1500	820 (401)	1600
			870 (451)	
		1800	2400	
2000		970 (551)	3200	

INSTRUMENT APPROACH CHART

RJAW / IWOTO

TACAN X RWY25

IWO APP 138.3 – 284.6	IWOTO TACAN 996 IJT CH – 35X --- 24°47'04"N/141°18'57"E	IWO TOWER 126.2 – 228.2	RADAR AVAILABLE CALL IWO APP
--------------------------	--	----------------------------	------------------------------------

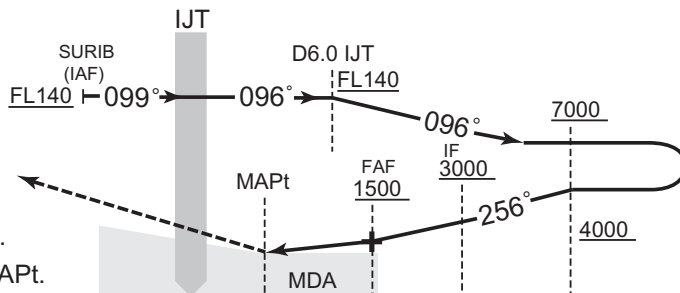


CHANGE : PROC ALT abolished. ALT(3.0° APCH Path) abolished. MINIMA. THR elev. AD elev.

MISSED APPROACH

1.9DME prior to IJT TACAN, turn left climb via IJT R150 to R150 /15.0DME fix and hold at 3000FT. Contact IWO APP.

Remain within 26NM

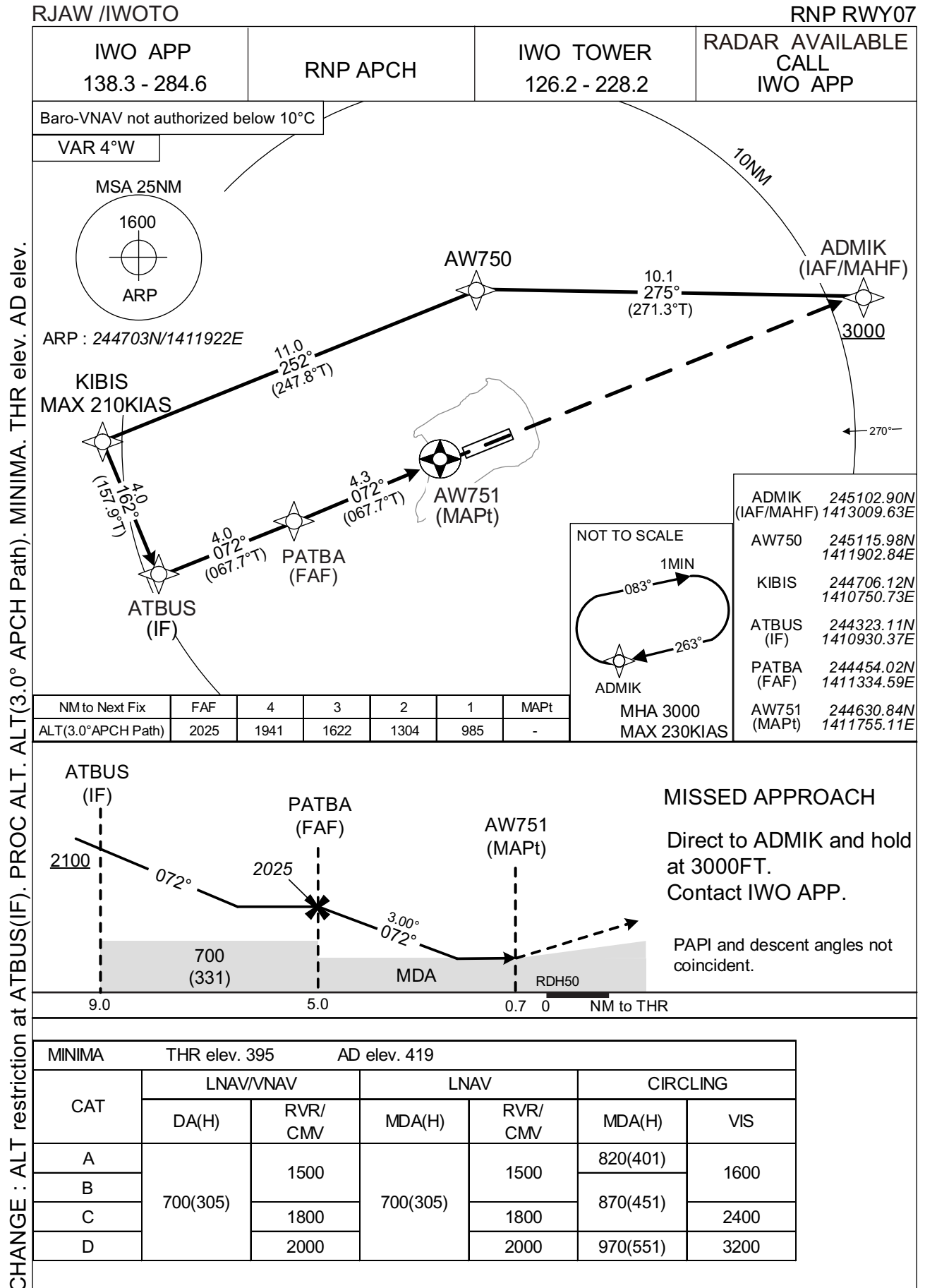


PAPI and descent angles not coincident.
Timing not authorized for defining the MAPt.

DME to IJT	1.9	7.0	15.0	22.0
NM to THR	0.8	5.9	13.9	20.9

MINIMA		THR elev. 419	AD elev. 419
CAT	MDA(H)		CIRCLING
	RVR/CMV	MDA(H)	VIS
A	800 (381)	1500	820 (401)
B			1600
C			870 (451)
D			2400
		1800	870 (451)
		2000	970 (551)
			3200

INSTRUMENT APPROACH CHART

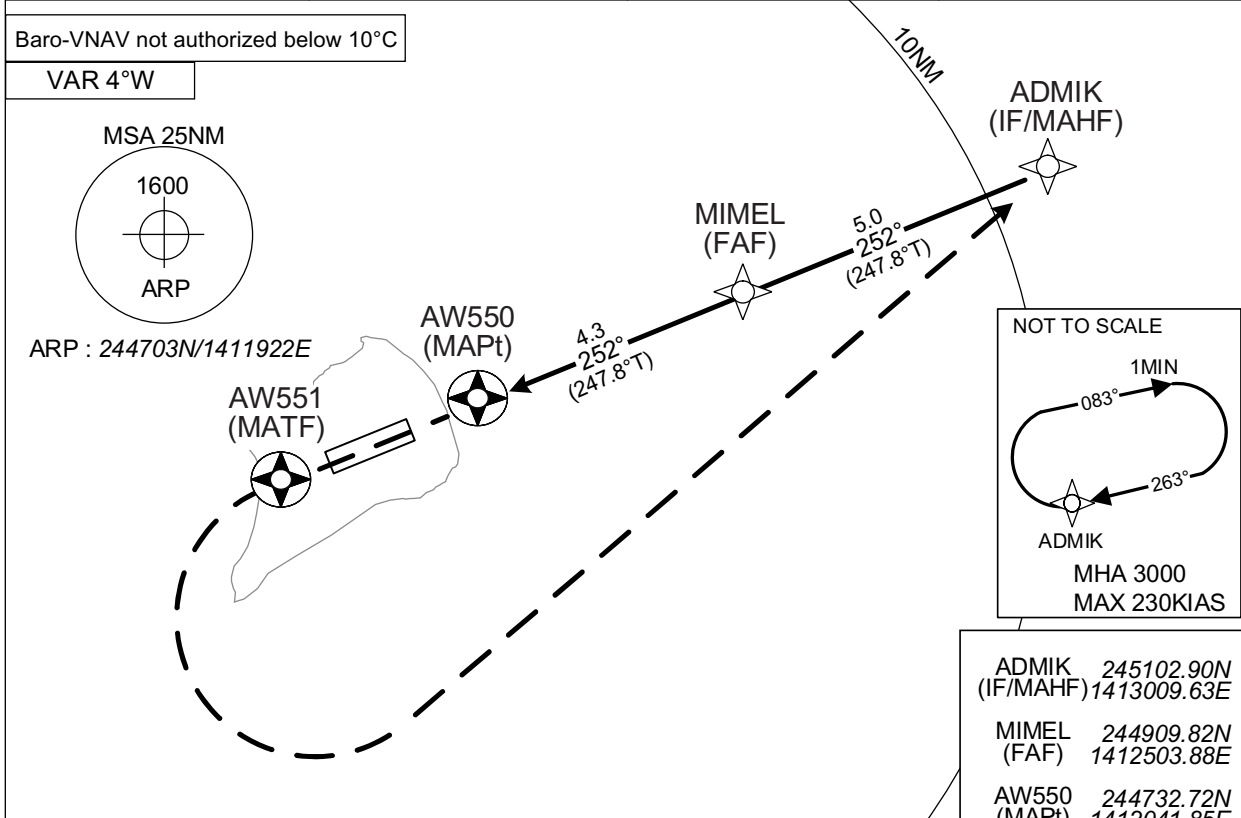


INSTRUMENT APPROACH CHART

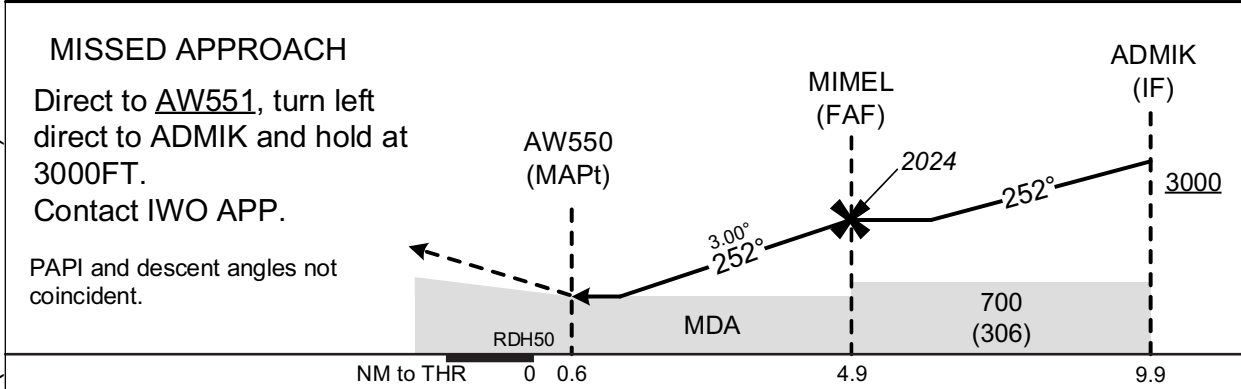
RJAW /IWOTO

RNP RWY25

IWO APP 138.3 - 284.6	RNP APCH	IWO TOWER 126.2 - 228.2	RADAR AVAILABLE CALL IWO APP
--------------------------	----------	----------------------------	------------------------------------



NM to Next Fix	MAPt	1	2	3	4	FAF
ALT(3.0° APCH Path)	-	978	1296	1614	1933	2024



MINIMA	THR elev. 419		AD elev. 419			
CAT	LNAV/VNAV		LNAV		CIRCLING	
	DA(H)	RVR/CMV	MDA(H)	RVR/CMV	MDA(H)	VIS
A	695(276)	1500	690(271)	1500	820(401)	1600
B					870(451)	
C					1600	3200
D					1800	

CHANGE : PROC ALT. ALT(3.0° APCH Path). MINIMA. THR elev. AD elev.