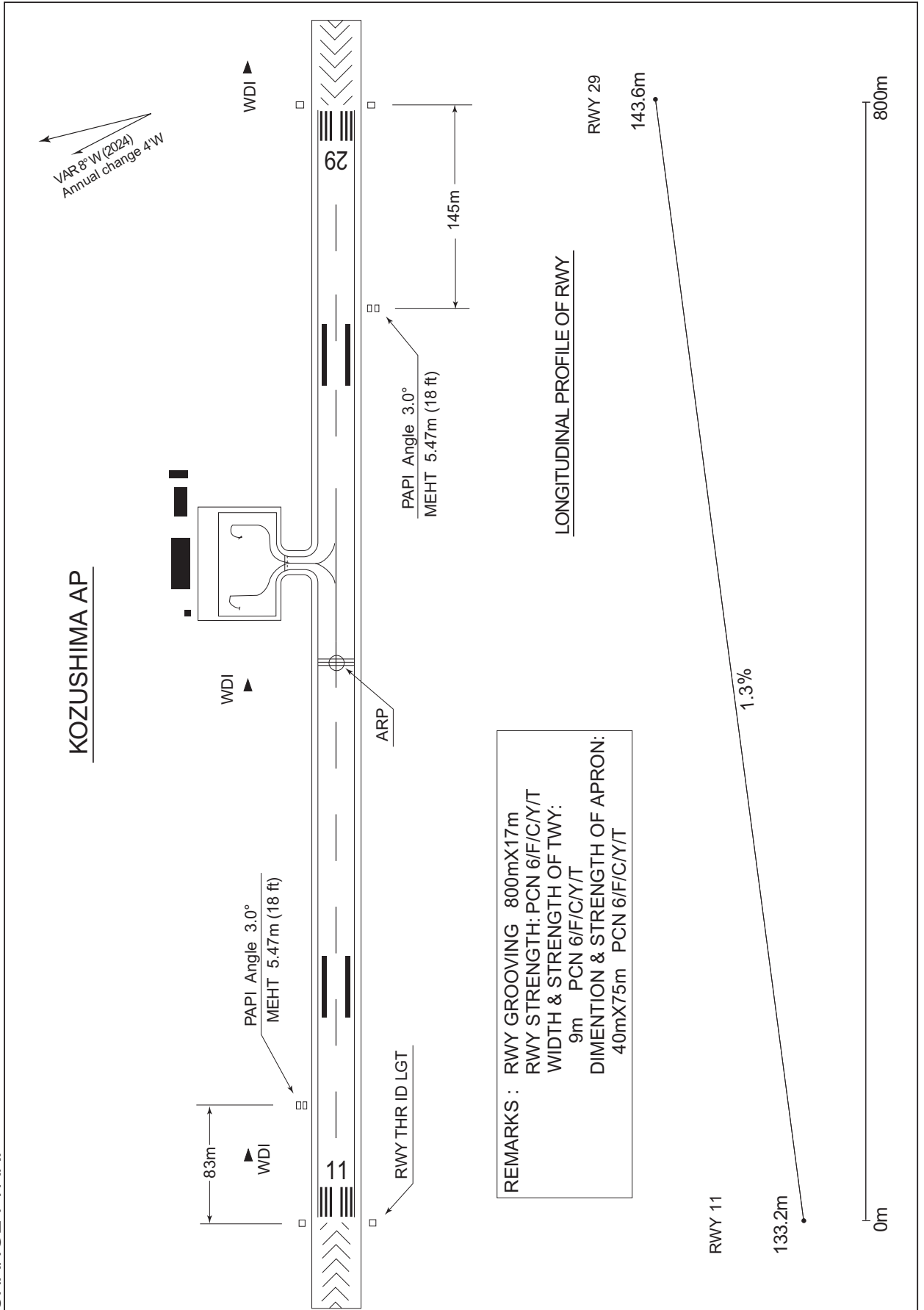


RJAZ / KOZUSHIMA

AD CHART

CHANGE : VAR.



INTENTIONALLY LEFT BLANK

STANDARD DEPARTURE CHART-INSTRUMENT

RJAZ / KOZUSHIMA

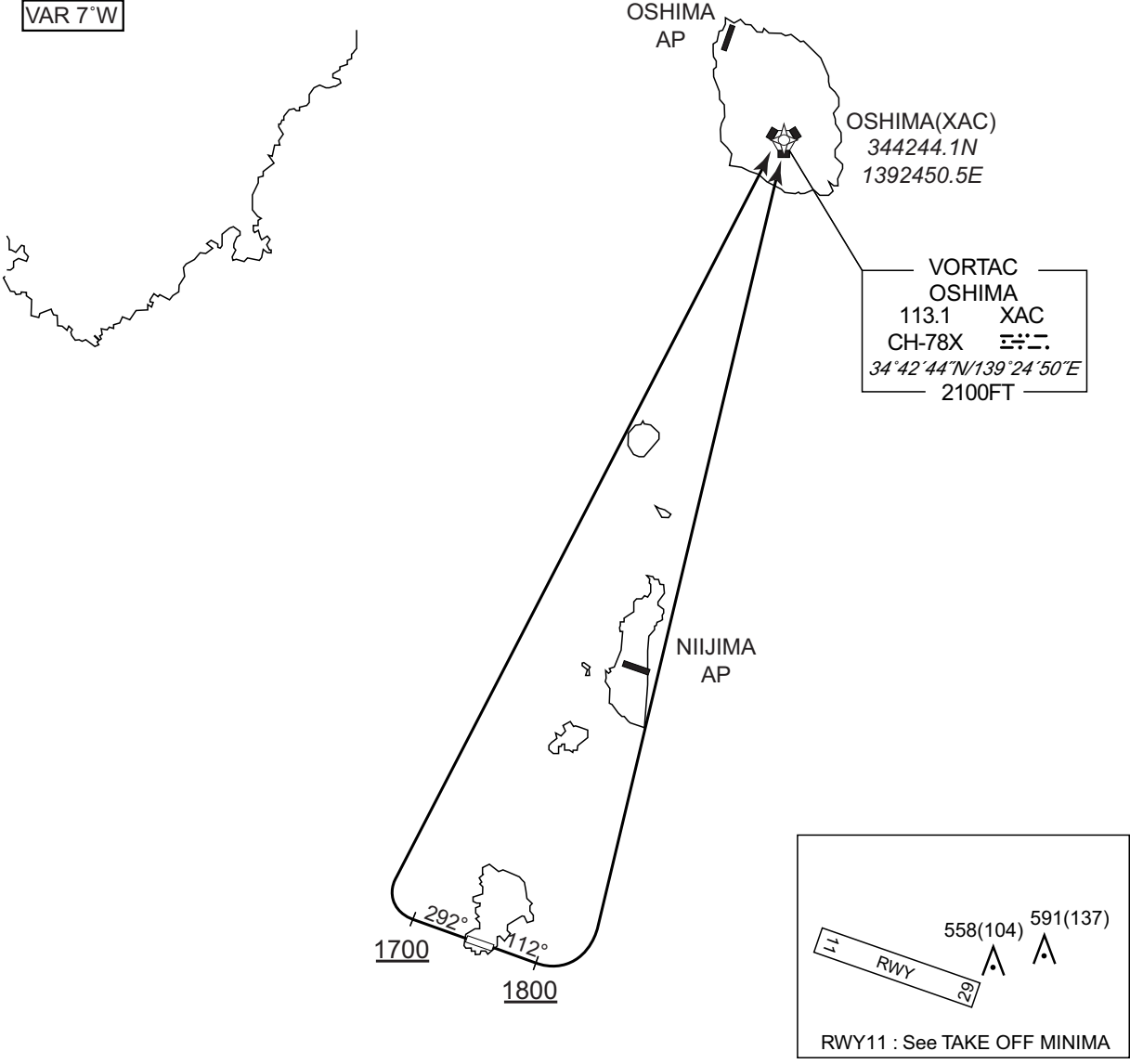
RNAV SID

KOZU ONE DEPARTURE

RNP1

Note GNSS required.

VAR 7°W



CHANGE : Navigation Specification(Basic RNP1 → RNP1). NIIJIMA TACAN abolished.

RWY11 : Climb on HDG112° at or above 1800FT, turn left direct to XAC.
RWY29 : Climb on HDG292° at or above 1700FT, turn right direct to XAC.

NOTE RWY11 : 5.0% climb gradient required up to 2100FT.
OBST ALT 1903FT located 1.9NM 042° FM end of RWY11.

NOTE RWY29 : 5.0% climb gradient required up to 2200FT.
OBST ALT 1969FT located 2.1NM 041° FM end of RWY29.

STANDARD DEPARTURE CHART-INSTRUMENT

RJAZ / KOZUSHIMA

RNAV SID

KOZU ONE DEPARTURE

RWY11

Serial Number	Path Descriptor	Waypoint Identifier	Fly Over	Course °M(°T)	Magnetic Variation	Distance (NM)	Turn Direction	Altitude (FT)	Speed (KIAS)	Vertical Angle	Navigation Specification
001	VA	-	-	112 (105.2)	-7.1	-	-	+1800	-	-	RNP1
002	DF	XAC	-	-	-7.1	-	L	-	-	-	RNP1

RWY29

Serial Number	Path Descriptor	Waypoint Identifier	Fly Over	Course °M(°T)	Magnetic Variation	Distance (NM)	Turn Direction	Altitude (FT)	Speed (KIAS)	Vertical Angle	Navigation Specification
001	VA	-	-	292 (285.2)	-7.1	-	-	+1700	-	-	RNP1
002	DF	XAC	-	-	-7.1	-	R	-	-	-	RNP1

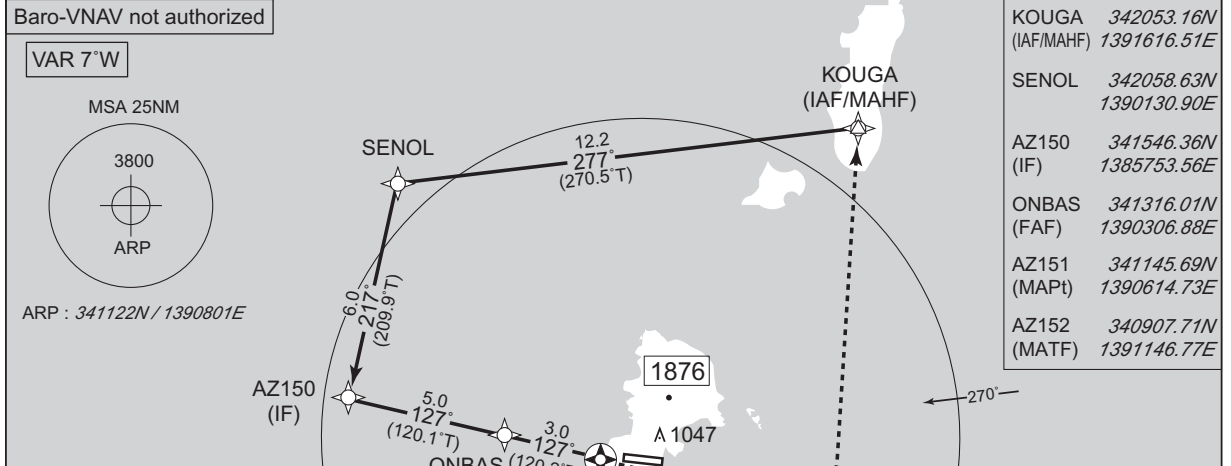
CHANGE : Navigation Specification(Basic RNP1 → RNP1).

INSTRUMENT APPROACH CHART

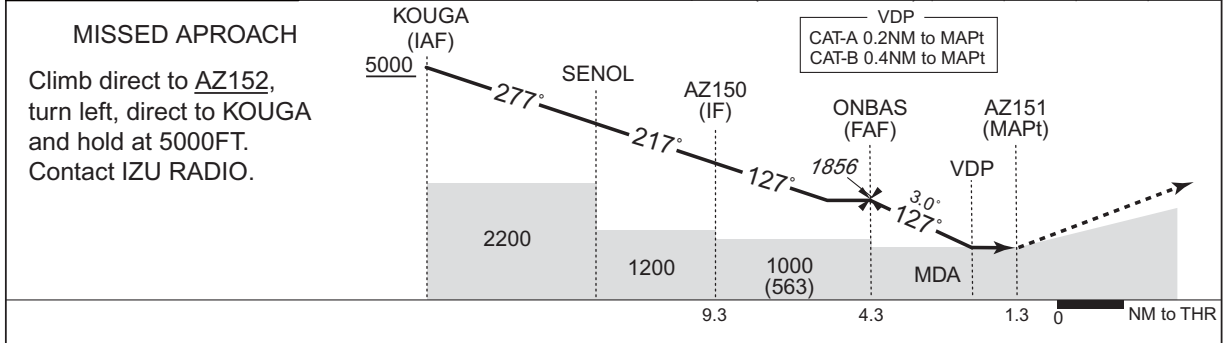
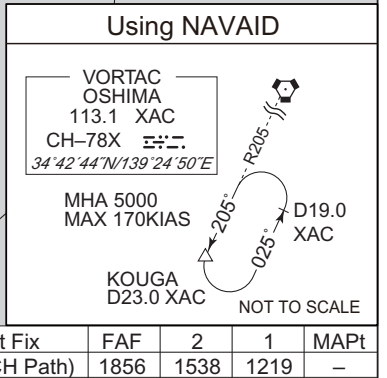
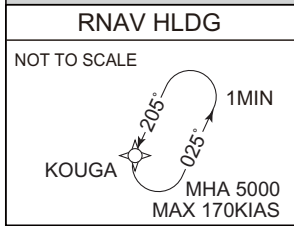
RJAZ / KOZUSHIMA

RNP RWY11

TOKYO CONTROL 133.7 – 133.35 309.4 – 312.0	RNP APCH	IZU RADIO 124.3 AFIS provided by New Chitose Airport Office	NO RADAR
--	----------	--	----------



KOUGA (IAF/MAHF)	342053.16N	1391616.51E
SENOL	342058.63N	1390130.90E
AZ150 (IF)	341546.36N	1385753.56E
ONBAS (FAF)	341316.01N	1390306.88E
AZ151 (MAPt)	341145.69N	1390614.73E
AZ152 (MATF)	340907.71N	1391146.77E



Missed APCH climb gradient MNM 5.0%

MINIMA		THR elev. 437		AD elev. 454		
CAT	LNAV/VNAV		LNAV		CIRCLING	
	DA(H)	CMV	MDA(H)	CMV	MDA(H)	VIS
A	Not applicable	-	910 (473)	1500	910 (456)	1600
B			960 (523)		960 (506)	
C			-	-	-	
D			-	-	-	

CHANGE : Description of VAR.

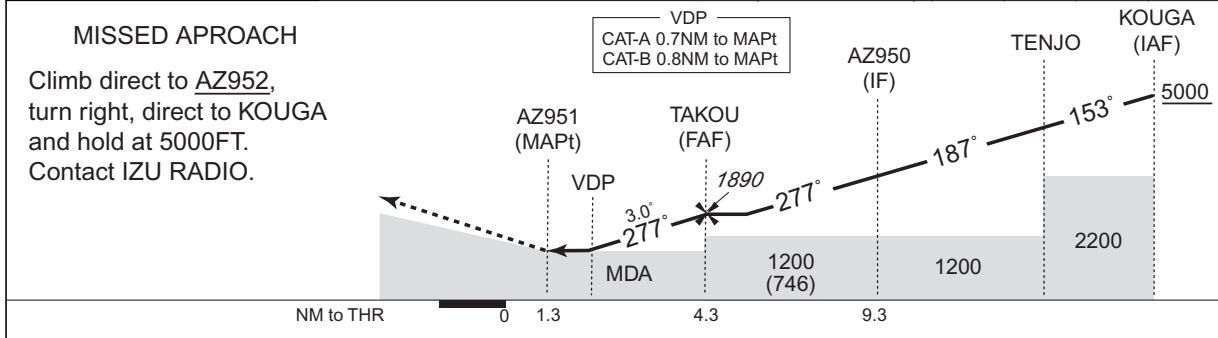
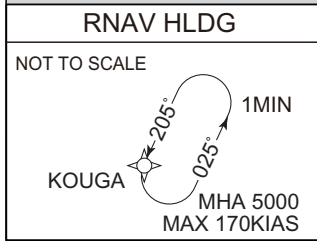
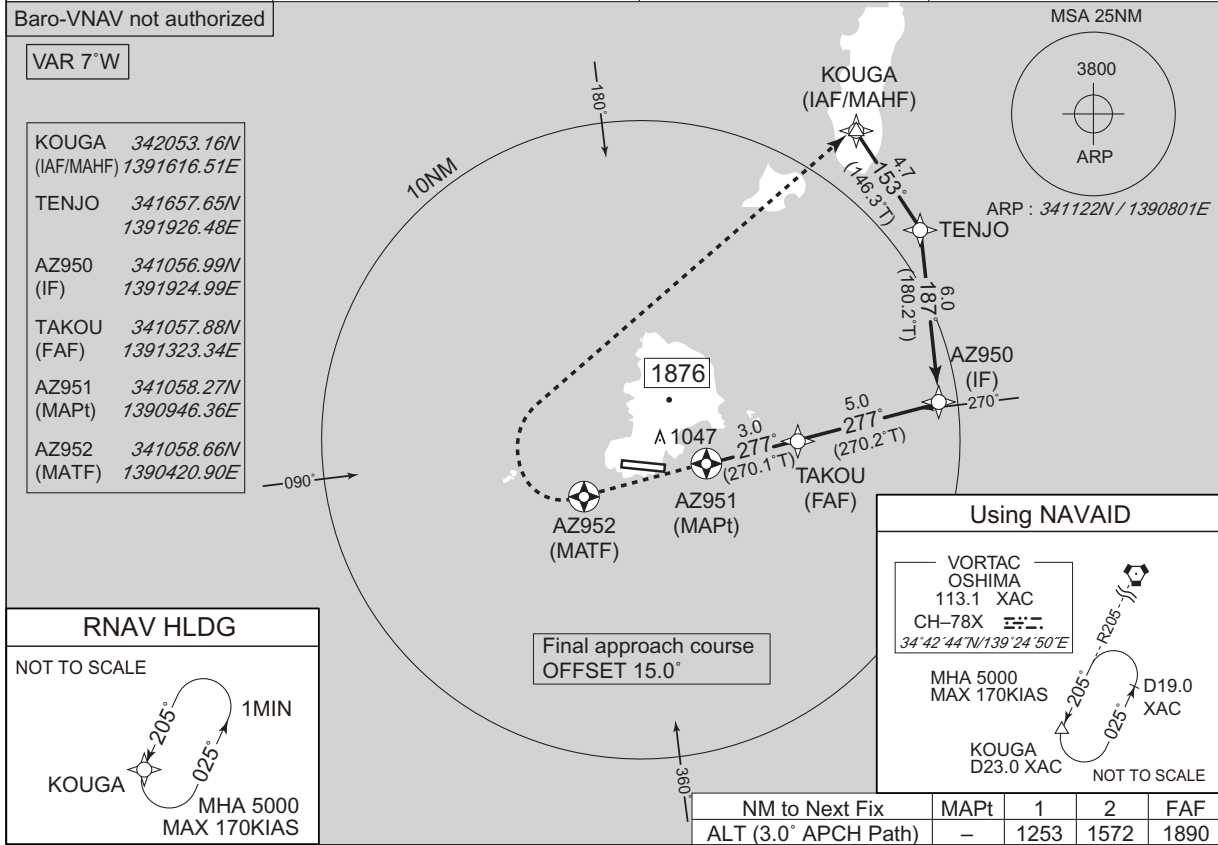
Circling to SOUTH side of RWY only.
MINIMA with Missed APCH climb gradient of 2.5% are not established.

INSTRUMENT APPROACH CHART

RJAZ / KOZUSHIMA

RNP RWY29

TOKYO CONTROL 133.7 – 133.35 309.4 – 312.0	RNP APCH	IZU RADIO 124.3 AFIS provided by New Chitose Airport Office	NO RADAR
--	----------	--	----------



Missed APCH climb gradient MNM 3.0%

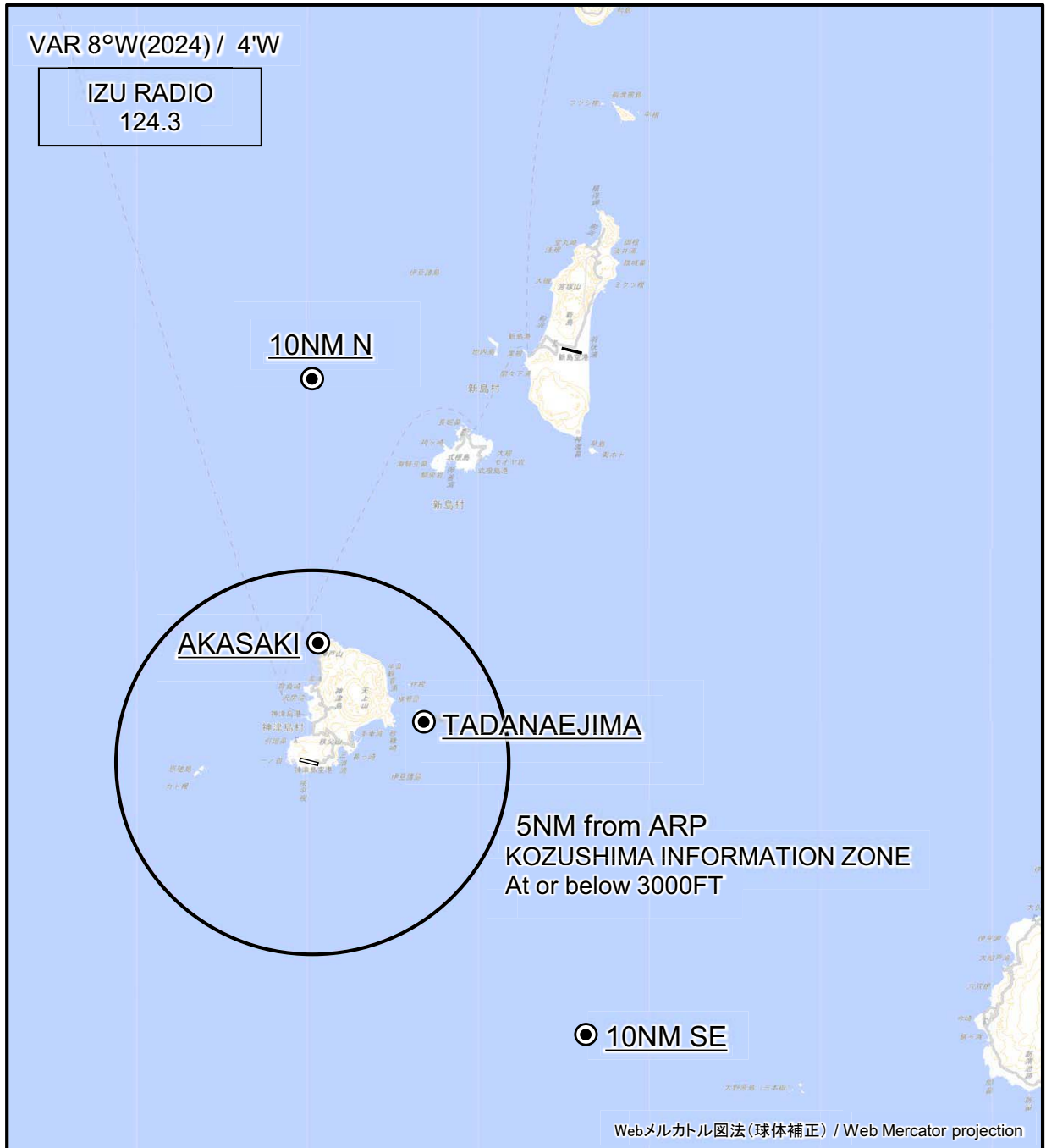
MINIMA		THR elev. 471	AD elev. 454			
CAT	LNAV/VNAV		LNAV		CIRCLING	
	DA(H)	CMV	MDA(H)	CMV	MDA(H)	VIS
A	Not applicable	-	1090 (636)	1500	1090 (636)	1600
B			1110 (656)		1110 (656)	
C			-	-	-	-
D			-	-	-	-

CHANGE : Description of VAR.

Circling to SOUTH side of RWY only.
MINIMA with Missed APCH climb gradient of 2.5% are not established.

RJAZ / KOZUSHIMA

Visual REP



※図中に標高を示す数字がある場合、単位はメートル(m)である。The unit of measurement used to express elevation is meter(m).

CHANGE : VAR.

Call sign	BRG / DIST from ARP	Remarks
10NM N	360°T / 10.0NM	海上 Over the sea
赤崎 Akasaki	003°T / 3.1NM	岬 Cape
祇苗島 Tadanaejima	069°T / 3.0NM	島 Island
10NM SE	135°T / 10.0NM	海上 Over the sea

RJAZ / KOZUSHIMA

Minimum Vectoring Altitude CHART

