

**AD 2 AERODROMES**

**RJAZ AD 2.1 AERODROME LOCATION INDICATOR AND NAME**

**RJAZ - KOZUSHIMA**

**RJAZ AD 2.2 AERODROME GEOGRAPHICAL AND ADMINISTRATIVE DATA**

1	ARP coordinates and site at AD	341122N 1390801E 0.4km from RWY 11 THR
2	Direction and distance from (city)	1.7km S from Kozushima village office
3	Elevation/ Reference temperature	454 FT / 28°C (2004-2008)
4	Geoid undulation at AD ELEV PSN	134ft
5	MAG VAR/ Annual change	8° W(2024) / 4'W
6	AD Administration, address, telephone, telefax, telex, AFS, e-mail and/or Web-site addresses	Tokyo Municipal Govt. Kinnaga Kozushima-mura Tokyo Tel 04992-8-1311 Fax 04992-8-1313
7	Types of traffic permitted(IFR/VFR)	IFR/VFR
8	Remarks	Nil

**RJAZ AD 2.3 OPERATIONAL HOURS**

1	AD Administration	2330-0815 [2330 20th APR - 0815 10th MAY, 2330 15th JUL - 0815 31st AUG] 2330-0730 [2330 31st AUG - 0730 20th APR, 2330 10th MAY - 0730 15th JUL]
2	Customs and immigration	On request Customs: 03-3599-6286 Immigration: 0570-034259(Department Number 210)
3	Health and sanitation	Quarantine(human): On request(03-3599-1515) Quarantine(animal, plant): Nil
4	AIS Briefing Office	Nil
5	ATS Reporting Office(ARO)	Nil
6	MET Briefing Office	H24 (TOKYO)
7	ATS	2330-0815 [2330 20th APR - 0815 10th MAY, 2330 15th JUL - 0815 31st AUG] 2330-0730 [2330 31st AUG - 0730 20th APR, 2330 10th MAY - 0730 15th JUL] Remarks :AFIS provided by New Chitose Airport Office.
8	Fuelling	2330-0815 [2330 20th APR - 0815 10th MAY, 2330 15th JUL - 0815 31st AUG] 2330-0730 [2330 31st AUG - 0730 20th APR, 2330 10th MAY - 0730 15th JUL] (On request)
9	Handling	2330-0815 [2330 20th APR - 0815 10th MAY, 2330 15th JUL - 0815 31st AUG] 2330-0730 [2330 31st AUG - 0730 20th APR, 2330 10th MAY - 0730 15th JUL]
10	Security	2330-0815 [2330 20th APR - 0815 10th MAY, 2330 15th JUL - 0815 31st AUG] 2330-0730 [2330 31st AUG - 0730 20th APR, 2330 10th MAY - 0730 15th JUL]
11	De-icing	Nil
12	Remarks	Nil

**RJAZ AD 2.4 HANDLING SERVICES AND FACILITIES**

1	Cargo-handling facilities	Nil
2	Fuel/ oil types	Fuel : JET A-1
3	Fuelling facilities/ capacity	Fuel tank
4	De-icing facilities	Nil
5	Hangar space for visiting aircraft	Nil
6	Repair facilities for visiting aircraft	Nil
7	Remarks	Nil

**RJAZ AD 2.5 PASSENGER FACILITIES**

1	Hotels	Nil
2	Restaurants	Nil
3	Transportation	Nil
4	Medical facilities	Nil
5	Bank and Post Office	Nil
6	Tourist Office	Nil
7	Remarks	Nil

**RJAZ AD 2.6 RESCUE AND FIRE FIGHTING SERVICES**

1	AD category for fire fighting	CAT 3
2	Rescue equipment	Chemical fire fighting truck x 1
3	Capability for removal of disabled aircraft	Nil
4	Remarks	Nil

**RJAZ AD 2.7 SEASONAL AVAILABILITY-CLEARING**

1	Types of clearing equipment	Not applicable
2	Clearance priorities	Nil
3	Remarks	Nil

**RJAZ AD 2.8 APRONS, TAXIWAYS AND CHECK LOCATIONS DATA**

1	Apron surface and strength	SURFACE : Asphalt concrete      STRENGTH : PCN 6/F/C/Y/T
2	Taxiway width, surface and strength	WIDTH : 9m SURFACE : Asphalt concrete      STRENGTH : PCN 6/F/C/Y/T
3	ACL and elevation	Not available
4	VOR checkpoints	Not available
5	INS checkpoints	Spot NR 1: 341123.79N 1390802.71E 2: 341123.57N 1390803.68E 3: 341123.36N 1390804.62E
6	Remarks	Nil

**RJAZ AD 2.9 SURFACE MOVEMENT GUIDANCE AND CONTROL SYSTEM AND MARKINGS**

1	Use of aircraft stand ID signs, TWY guide lines and Visual docking/ parking guidance system of aircraft stands	Nil
2	RWY and TWY markings and LGT	RWY: RWY 11/29 (Marking) RWY designation, RWY CL, RWY middle point, RWY side stripe, RWY THR, TDZ, Aiming point  TWY : (Marking) TWY CL, TWY side stripe, RWY HLDG PSN
3	Stop bars	Nil
4	Remarks	(Marking) Overrun area

**RJAZ AD 2.10 AERODROME OBSTACLES**

■ In Area2    See Obstacle data

■ In Area3    To be developed

**RJAZ AD 2.11 METEOROLOGICAL INFORMATION PROVIDED**

1	Associated MET Office	TOKYO
2	Hours of service MET Office outside hours	H24(TOKYO)
3	Office responsible for TAF preparation Periods of validity	Nil
4	Trend forecast Interval of issuance	Nil
5	Briefing/ consultation provided	Briefing is available upon inquiry at TOKYO
6	Flight documentation Language(s) used	C En
7	Charts and other information available for briefing or consultation	S <sub>6</sub> , U <sub>85</sub> , U <sub>7</sub> , U <sub>5</sub> , U <sub>3</sub> , U <sub>25</sub> , U <sub>2</sub> /Tr, P <sub>S</sub> , P <sub>5</sub> , P <sub>3</sub> , P <sub>25</sub> , P <sub>SWE</sub> , P <sub>SWF</sub> , P <sub>SWG</sub> , P <sub>SWI</sub> , P <sub>SWM</sub> , P <sub>SW</sub> (domestic), E, C, W <sub>E</sub> , W <sub>F</sub> , W <sub>G</sub> , W <sub>I</sub> , W, N
8	Supplementary equipment available for providing information	Nil
9	ATS units provided with information	RADIO
10	Additional information(limitation of service, etc.)	Nil

**RJAZ AD 2.12 RUNWAY PHYSICAL CHARACTERISTICS**

Designations RWY NR	TRUE BRG	Dimensions of RWY(M)	Strength(PCN) and surface of RWY	THR coordinates THR geoid undulation	THR elevation and highest elevation of TDZ of precision APP RWY
1	2	3	4	5	6
11	105.11°	800x25	PCN 6/F/C/Y/T Asphalt Concrete	341125.37N 1390745.48E	THR ELEV: 437FT
29	285.11°	800x25	PCN 6/F/C/Y/T Asphalt Concrete	341118.61N 1390815.65E	THR ELEV: 471FT

Slope of RWY	Strip Dimensions(M)	RESA(Overrun) Dimensions(M)	Remarks
7	10	11	14
See Below Figure	920x60	40x50	RWY Grooving: 800m x 17m
	920x60	40x50	

The diagram illustrates the physical characteristics of RWY 11 and RWY 29. RWY 11 is shown on the left with a height of 437FT. RWY 29 is shown on the right with a height of 471FT. The runways are separated by a distance of 800m. A 1.3% slope is indicated between the two runways.

**RJAZ AD 2.13 DECLARED DISTANCES**

RWY Designator	TORA (m)	TODA (m)	ASDA (m)	LDA (m)	Remarks
1	2	3	4	5	6
11	800	800	800	800	Nil
29	800	800	800	800	Nil

**RJAZ AD 2.14 APPROACH AND RUNWAY LIGHTING**

RWY Designator	APCH LGT type LEN INTST	RTHL Color WBAR	PAPI (VASIS) Angle DIST FM THR MEHT	RTZL LEN	RCLL LEN Spacing Color INTST	REDL LEN Spacing Color INTST	RENL Color WBAR	STWL LEN Color
1	2	3	4	5	6	7	8	9
11	Nil	Nil	PAPI 3.0° /LEFT 83m 18FT	Nil	Nil	Nil	Nil	Nil
29	Nil	Nil	PAPI 3.0° /LEFT 145m 18FT	Nil	Nil	Nil	Nil	Nil
Remarks								
10								
RWY THR ID LGT for RWY 11/29 THR (Color : White)								

**RJAZ AD 2.15 OTHER LIGHTING, SECONDARY POWER SUPPLY**

1	ABN/IBN location, characteristics and hours of operation	Nil
2	LDI location and LGT Anemometer location and LGT	Anemometer : RWY 11 : 84m from RWY 11 THR, LGTD RWY 29 : 90m from RWY 29 THR, LGTD
3	TWY edge and center line lighting	Nil
4	Secondary power supply/ switch-over time	Within 15 sec: PAPI, RWY THR ID LGT
5	Remarks	Nil

**RJAZ AD 2.16 HELICOPTER LANDING AREA**

Nil
-----

**RJAZ AD 2.17 ATS AIRSPACE**

Designation and lateral limits		Vertical limits (ft)	Airspace classification	ATS unit call sign Language	Remarks
1		2	3	4	6
KOZUSHIMA INFORMATION ZONE	Area within a radius of 5nm(9km) of KOZUSHIMA ARP	3000 or below	E	Izu Radio En	

**RJAZ AD 2.18 ATS COMMUNICATION FACILITIES**

Service designation	Call sign	Frequency	Hours of operation	Remarks
1	2	3	4	5
AFIS	Izu Radio	124.3MHz	2330-0815 [2330 20th APR - 0815 10th MAY, 2330 15th JUL - 0815 31st AUG] 2330-0730 [2330 31st AUG - 0730 20th APR, 2330 10th MAY - 0730 15th JUL]	Operated by New Chitose Airport Office

**RJAZ AD 2.19 RADIO NAVIGATION AND LANDING AIDS**

Type of aid (VOR declination)	ID	Frequency	Hours of operation	Position of transmitting antenna coordinates	Elevation of DME transmitting antenna	Remarks
1	2	3	4	5	6	7
MSAS		1575.42MHz	H24			Transmitting antennas are satellite based.

**RJAZ AD 2.20 LOCAL TRAFFIC REGULATIONS**

1. Airport regulations

Nil

2. Taxiing to and from stands

Nil

3. Parking area for small aircraft(General aviation)

Nil

4. Parking area for helicopters

Nil

5. Apron - taxiing during winter conditions

Nil

6. Taxiing - limitations

Nil

7. School and training flights - technical test flights - use of runways

In principle, no flight training is permitted.  
To apply for an exception, the administrator's prior permission is required.

8. Helicopter traffic - limitation

Nil

9. Removal of disabled aircraft from runways

Nil

**RJAZ AD 2.21 NOISE ABATEMENT PROCEDURES**

Nil

**RJAZ AD 2.22 FLIGHT PROCEDURES**

**TAKE OFF MINIMA**

	RWY	ACFT CAT	REDL & RCLL		REDL or RCLL or RCL Marking		NIL (DAYTIME ONLY)	
			CEIL-RVR	CEIL-VIS	CEIL-RVR	CEIL-VIS	CEIL-RVR	CEIL-VIS
Multi-Engine ACFT with TKOF ALTN AP FILED	11	A,B	-	-	-	200-2400m	-	200-2400m
	29	A,B	-	-	-	0-400m	-	0-500m
OTHER	11	A,B	AVBL LDG MINIMA					
	29	A,B						

---

**RJAZ AD 2.23 ADDITIONAL INFORMATION**

Nil
-----

**RJAZ AD 2.24 CHARTS RELATED TO AN AERODROME**

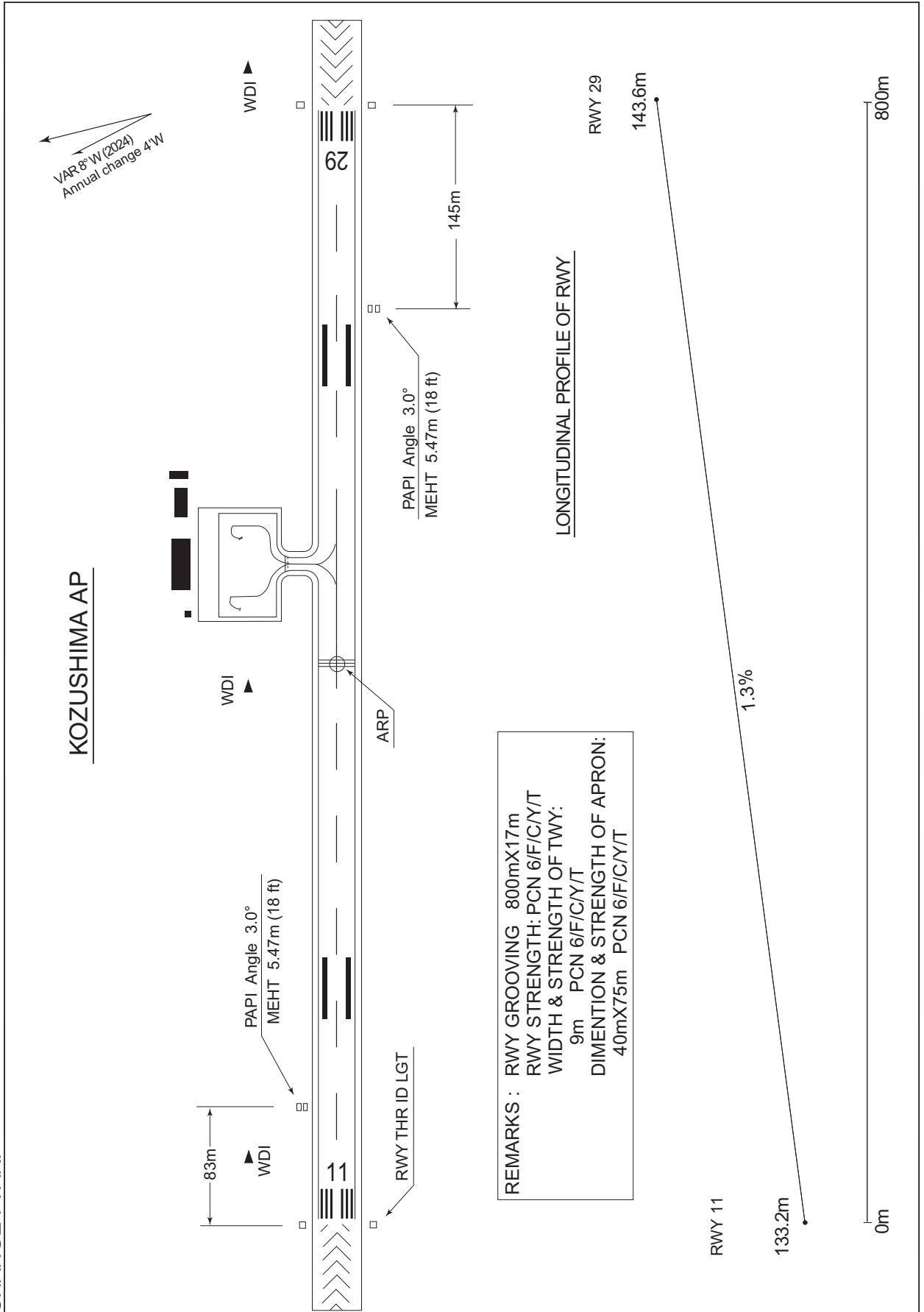
Aerodrome/Heliport Chart Standard Departure Chart - Instrument (KOZU-RNAV) Instrument Approach Chart (RNP RWY11) Instrument Approach Chart (RNP RWY29) Other Chart (Visual REP) Other Chart (MVA Chart)
--



RJAZ / KOZUSHIMA

AD CHART

CHANGE : VAR.



**INTENTIONALLY LEFT BLANK**

STANDARD DEPARTURE CHART-INSTRUMENT

RJAZ / KOZUSHIMA

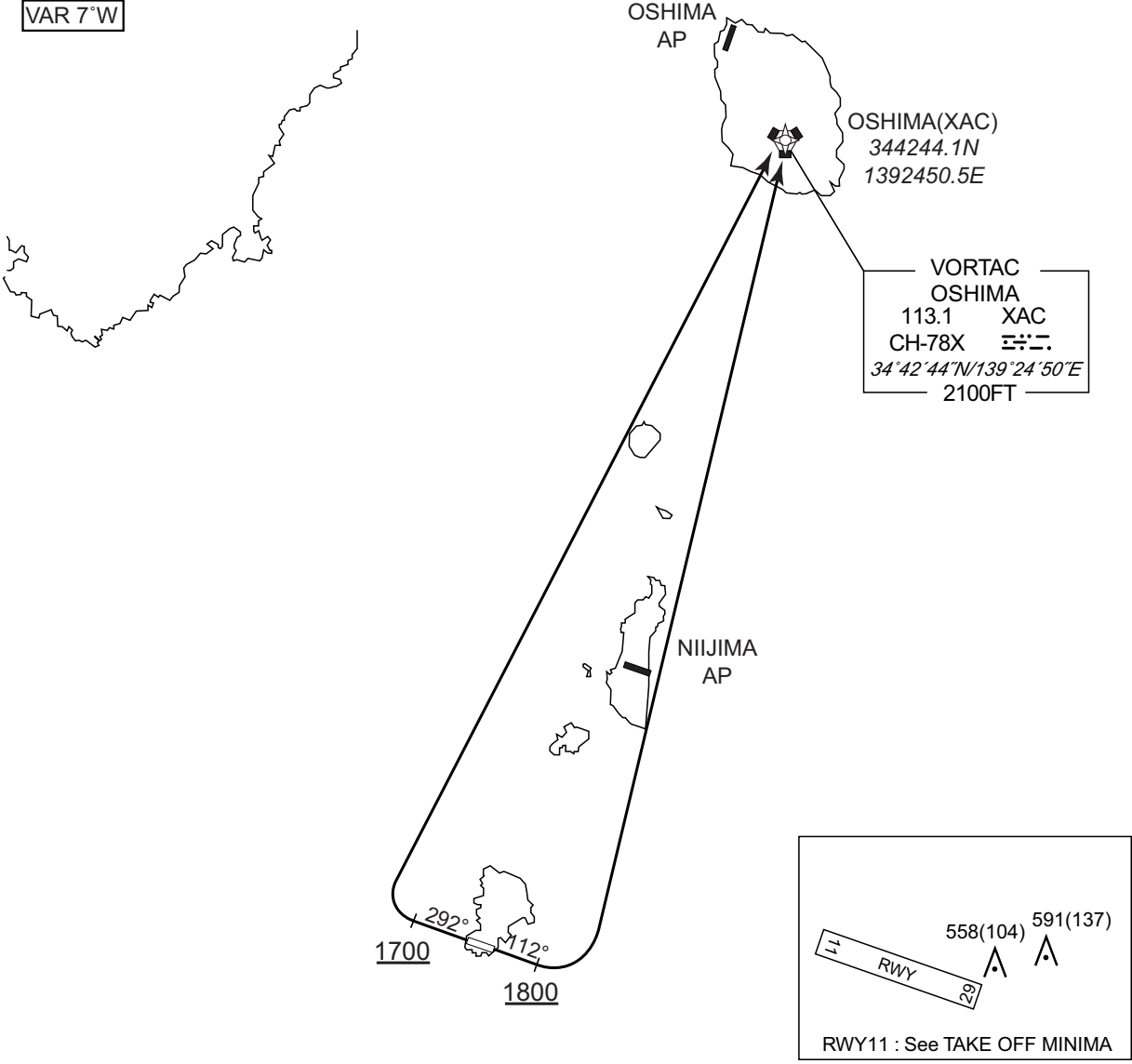
RNAV SID

KOZU ONE DEPARTURE

RNP1

Note GNSS required.

VAR 7°W



CHANGE : Navigation Specification(Basic RNP1 → RNP1). NIIJIMA TACAN abolished.

RWY11 : Climb on HDG112° at or above 1800FT, turn left direct to XAC.

RWY29 : Climb on HDG292° at or above 1700FT, turn right direct to XAC.

NOTE RWY11 : 5.0% climb gradient required up to 2100FT.

OBST ALT 1903FT located 1.9NM 042° FM end of RWY11.

NOTE RWY29 : 5.0% climb gradient required up to 2200FT.

OBST ALT 1969FT located 2.1NM 041° FM end of RWY29.

STANDARD DEPARTURE CHART-INSTRUMENT

RJAZ / KOZUSHIMA

RNAV SID

KOZU ONE DEPARTURE

RWY11

Serial Number	Path Descriptor	Waypoint Identifier	Fly Over	Course °M(°T)	Magnetic Variation	Distance (NM)	Turn Direction	Altitude (FT)	Speed (KIAS)	Vertical Angle	Navigation Specification
001	VA	-	-	112 (105.2)	-7.1	-	-	+1800	-	-	RNP1
002	DF	XAC	-	-	-7.1	-	L	-	-	-	RNP1

RWY29

Serial Number	Path Descriptor	Waypoint Identifier	Fly Over	Course °M(°T)	Magnetic Variation	Distance (NM)	Turn Direction	Altitude (FT)	Speed (KIAS)	Vertical Angle	Navigation Specification
001	VA	-	-	292 (285.2)	-7.1	-	-	+1700	-	-	RNP1
002	DF	XAC	-	-	-7.1	-	R	-	-	-	RNP1

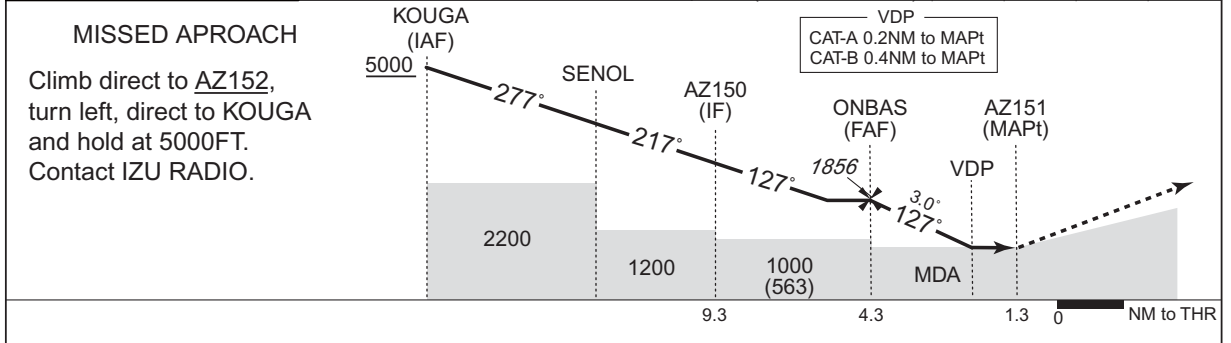
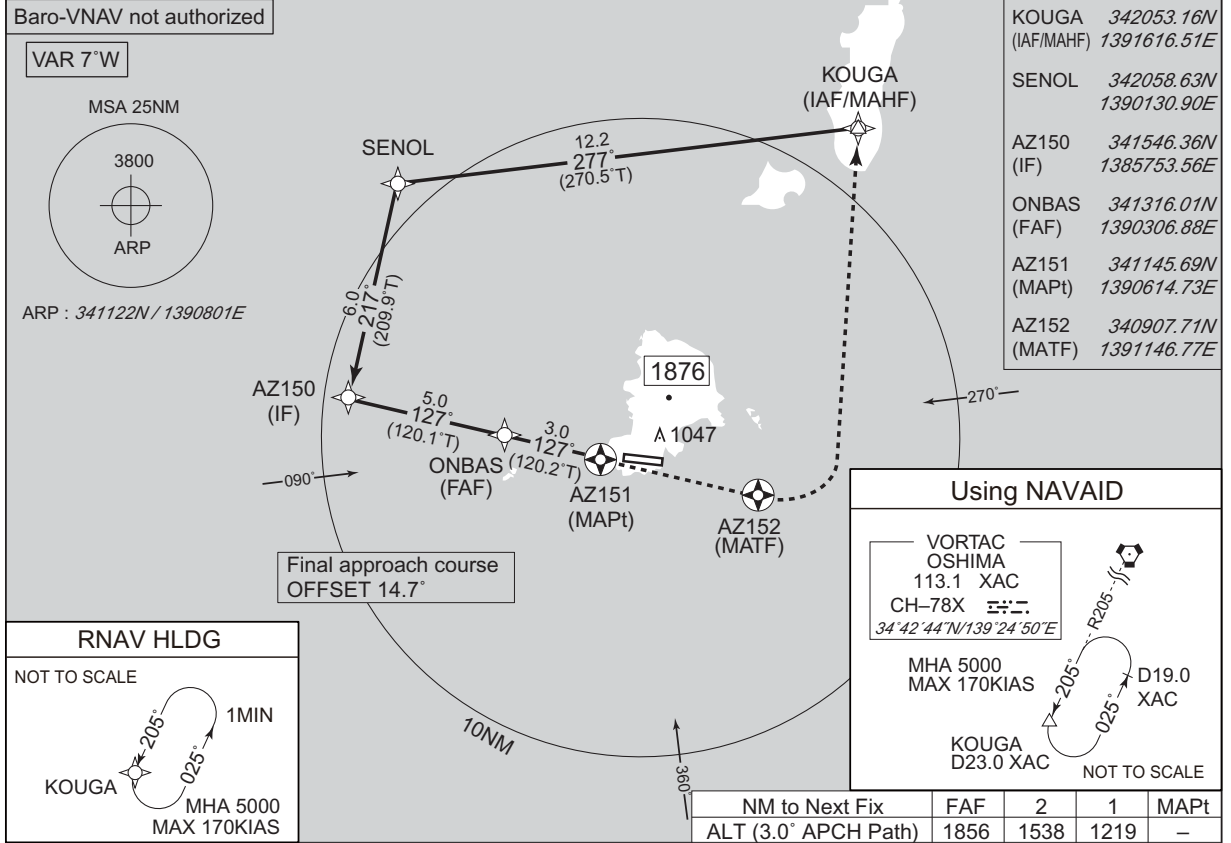
CHANGE : Navigation Specification(Basic RNP1 → RNP1).

INSTRUMENT APPROACH CHART

RJAZ / KOZUSHIMA

RNP RWY11

TOKYO CONTROL 133.7 – 133.35 309.4 – 312.0	RNP APCH	IZU RADIO 124.3 AFIS provided by New Chitose Airport Office	NO RADAR
--	----------	--	----------



Missed APCH climb gradient MNM 5.0%

MINIMA		THR elev. 437		AD elev. 454		
CAT	LNAV/VNAV		LNAV		CIRCLING	
	DA(H)	CMV	MDA(H)	CMV	MDA(H)	VIS
A	Not applicable	-	910 (473)	1500	910 (456)	1600
B			960 (523)		960 (506)	
C			-	-	-	
D			-	-	-	

CHANGE : Description of VAR.

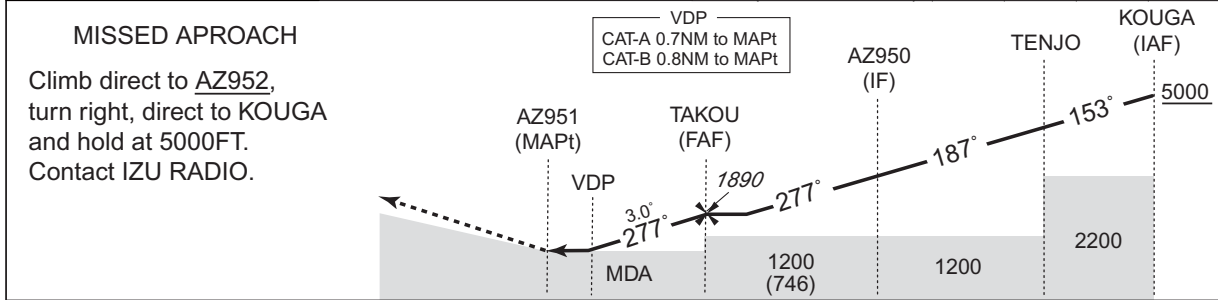
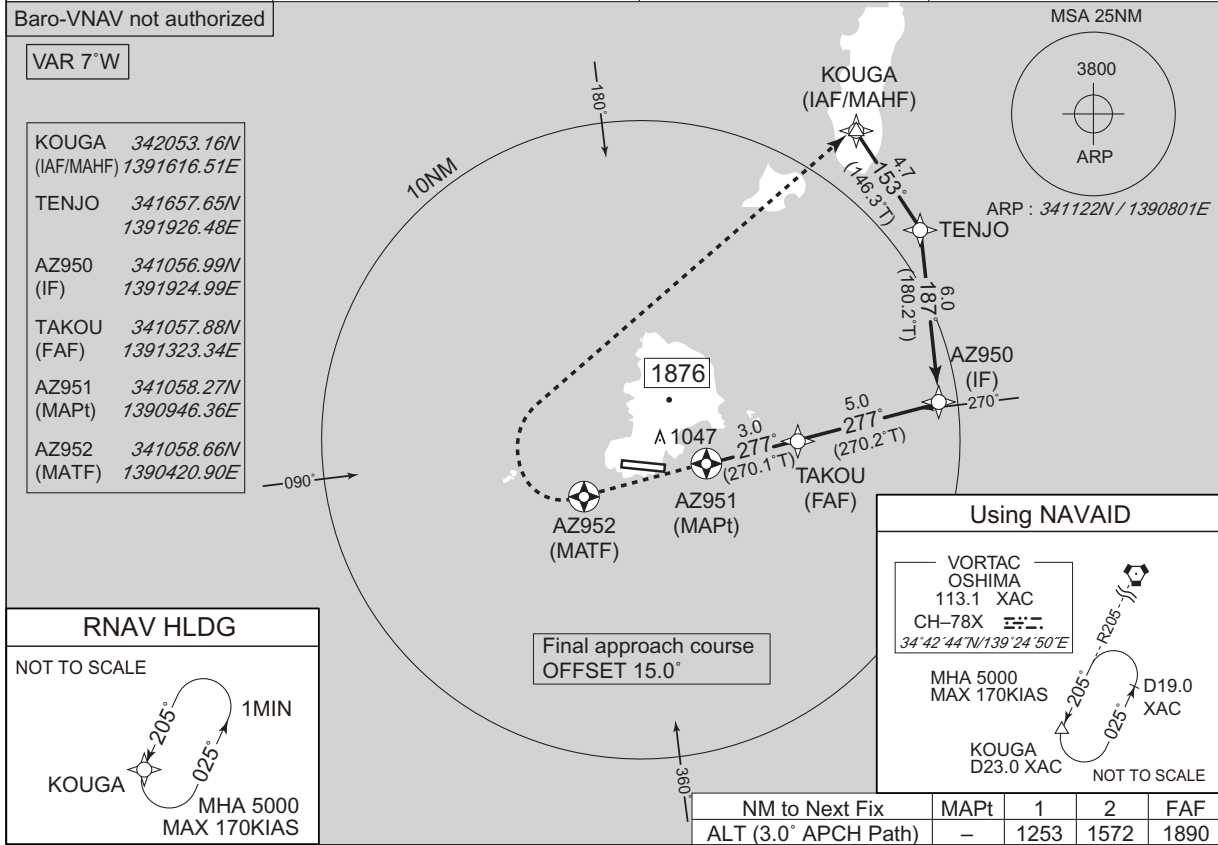
Circling to SOUTH side of RWY only.  
MINIMA with Missed APCH climb gradient of 2.5% are not established.

INSTRUMENT APPROACH CHART

RJAZ / KOZUSHIMA

RNP RWY29

TOKYO CONTROL 133.7 – 133.35 309.4 – 312.0	RNP APCH	IZU RADIO 124.3 AFIS provided by New Chitose Airport Office	NO RADAR
--	----------	--	----------



Missed APCH climb gradient MNM 3.0%

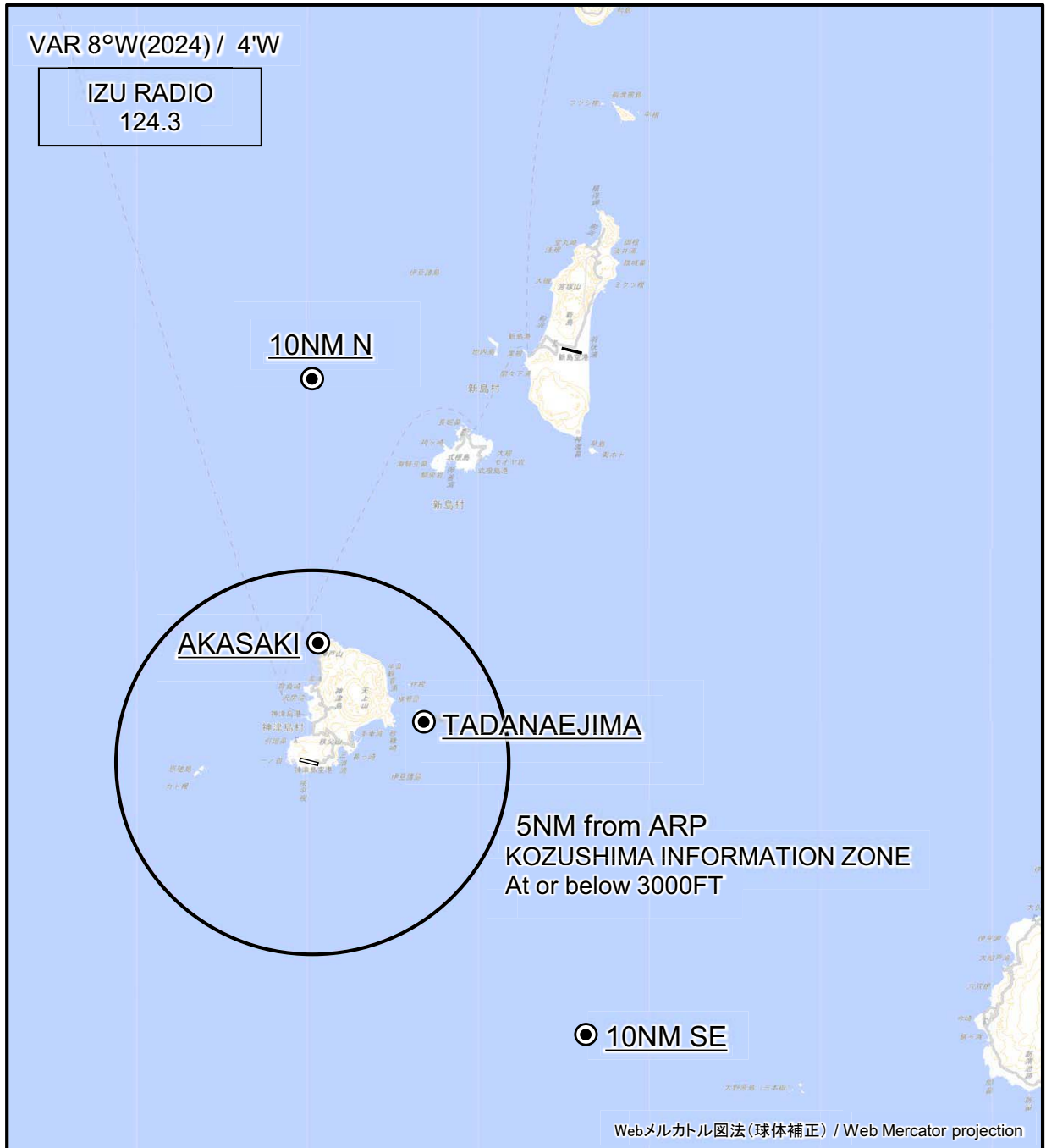
MINIMA		THR elev. 471	AD elev. 454			
CAT	LNAV/VNAV		LNAV		CIRCLING	
	DA(H)	CMV	MDA(H)	CMV	MDA(H)	VIS
A	Not applicable	-	1090 (636)	1500	1090 (636)	1600
B			1110 (656)		1110 (656)	
C			-	-	-	-
D			-	-	-	-

CHANGE : Description of VAR.

Circling to SOUTH side of RWY only.  
MINIMA with Missed APCH climb gradient of 2.5% are not established.

RJAZ / KOZUSHIMA

Visual REP



※図中に標高を示す数字がある場合、単位はメートル(m)である。The unit of measurement used to express elevation is meter(m).

CHANGE : VAR.

Call sign	BRG / DIST from ARP	Remarks
10NM N	360°T / 10.0NM	海上 Over the sea
赤崎 Akasaki	003°T / 3.1NM	岬 Cape
祇苗島 Tadanaejima	069°T / 3.0NM	島 Island
10NM SE	135°T / 10.0NM	海上 Over the sea

RJAZ / KOZUSHIMA

Minimum Vectoring Altitude CHART

