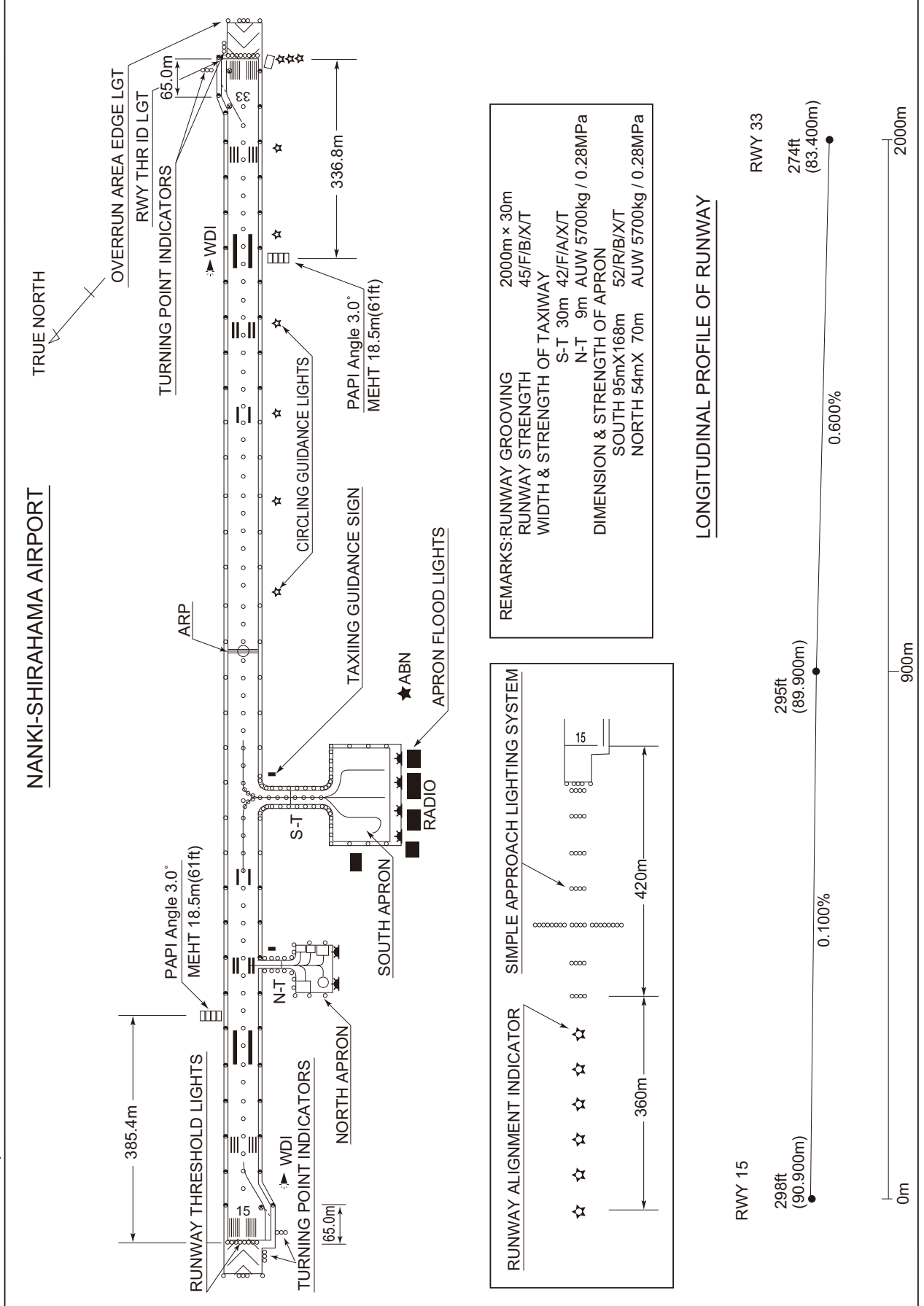


RJBD / NANKI-SHIRAHAMA

AD CHART

CHANGE : Shape of SOUTH APRON. DIMENSION of SOUTH APRON.



INTENTIONALLY LEFT BLANK

STANDARD DEPARTURE CHART - INSTRUMENT

RJBD / NANKI-SHIRAHAMA

SID

NANKI REVERSAL THREE DEPARTURE

RWY15 : Climb on HDG163° to NKE 4.0DME, turn right,...

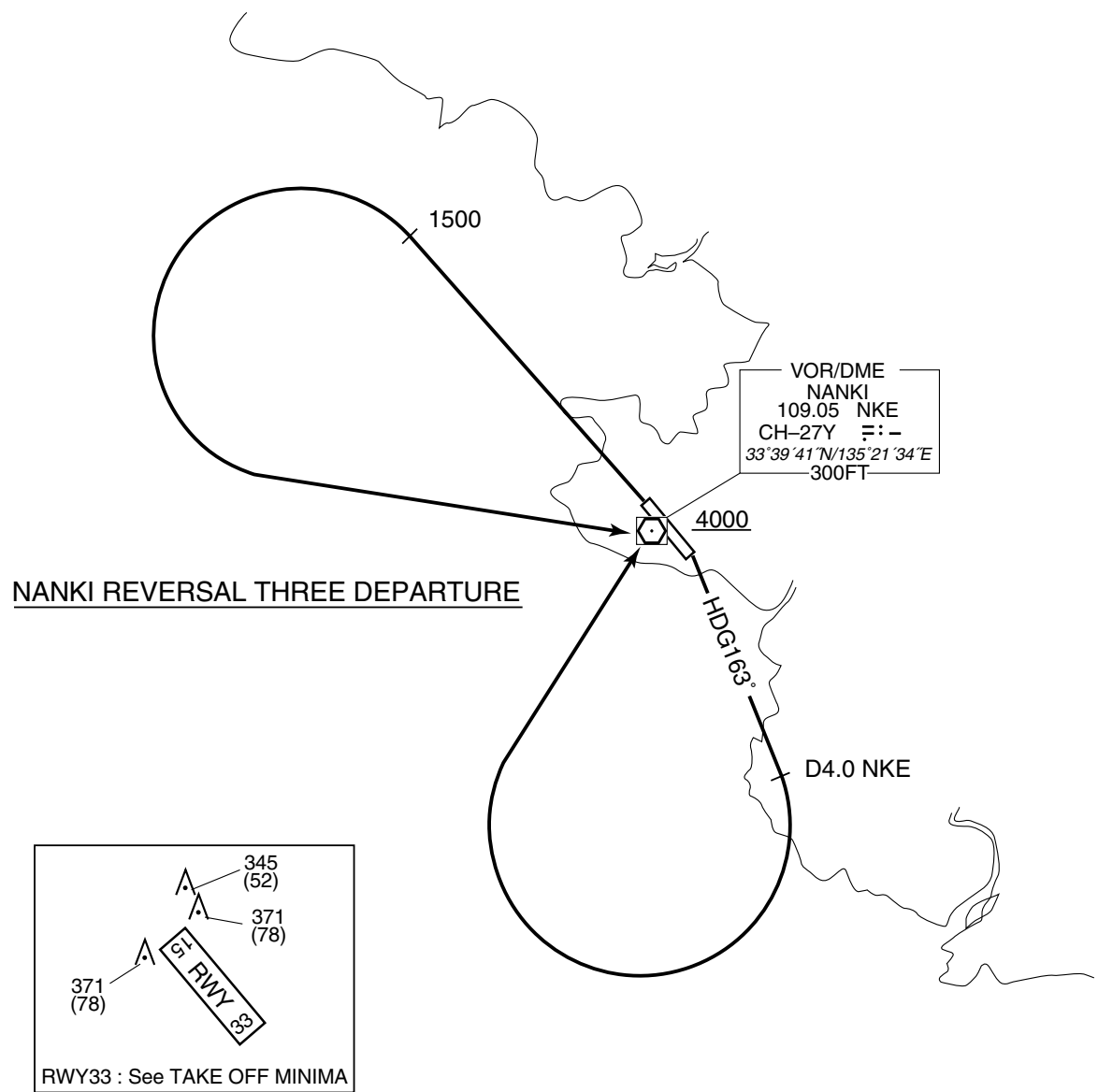
RWY33 : Climb RWY HDG to 1500FT, turn left,....

...direct to NKE VOR/DME.

Cross NKE VOR/DME at or above 4000FT.

Note RWY15 : 5.8% climb gradient required up to 1300FT.

OBST ALT 984FT located at 3.1NM 139° FM end of RWY15.



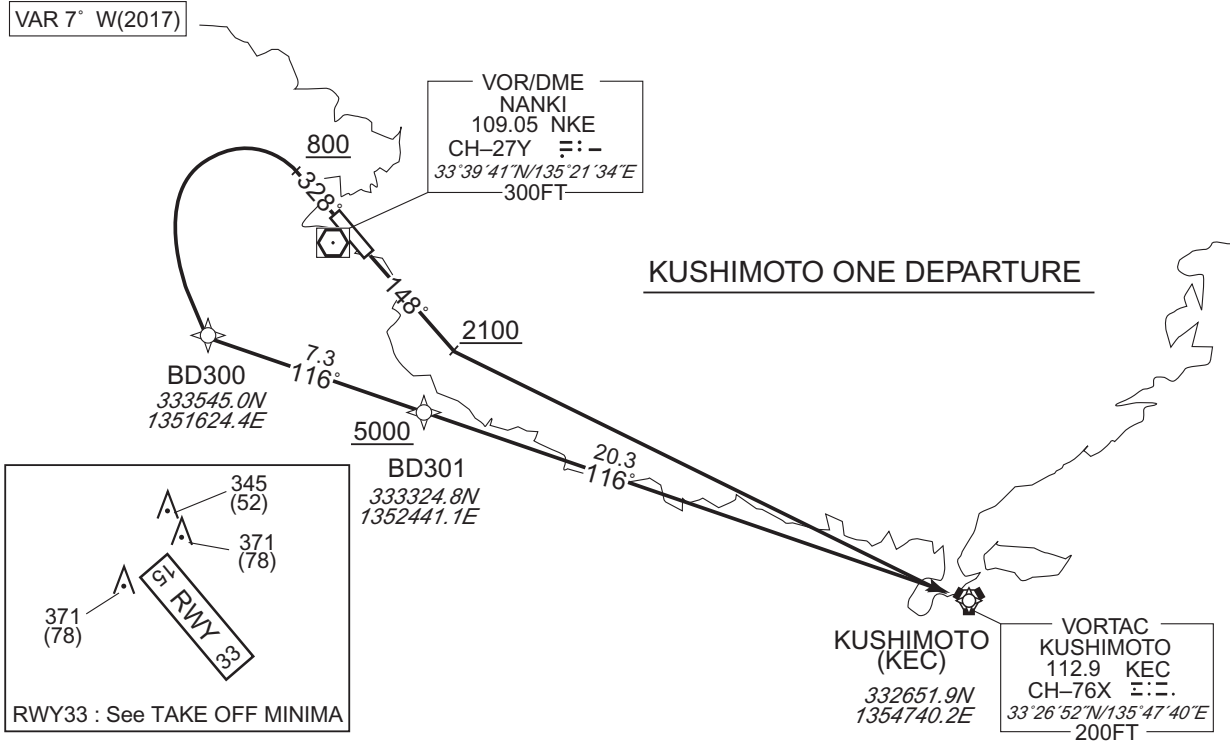
STANDARD DEPARTURE CHART - INSTRUMENT

RJBD / NANKI-SHIRAHAMA

RNAV SID

KUSHIMOTO ONE DEPARTURE	RNP1
-------------------------	------

Note GNSS required.



KUSHIMOTO ONE DEPARTURE

RWY15 : Climb on HDG148° at or above 2100FT, turn left direct to KEC.

RWY33 : Climb on HDG328° at or above 800FT, turn left direct to BD300, to BD301 at or above 5000FT, to KEC.

Note RWY15 : 6.1% climb gradient required up to 2100FT.

OBST ALT 1641FT located at 4.3NM 138° FM end of RWY15.

OBST ALT 1903FT located at 4.2NM 119° FM end of RWY15.

RWY15

Serial Number	Path Descriptor	Waypoint Identifier	Fly Over	Course °M(°T)	Magnetic Variation	Distance (NM)	Turn Direction	Altitude (FT)	Speed (KIAS)	Vertical Angle	Navigation Specification
001	VA	-	-	148 (140.1)	-7.3	-	-	+2100	-	-	RNP1
002	DF	KEC	-	-	-7.3	-	L	-	-	-	RNP1

RWY33

Serial Number	Path Descriptor	Waypoint Identifier	Fly Over	Course °M(°T)	Magnetic Variation	Distance (NM)	Turn Direction	Altitude (FT)	Speed (KIAS)	Vertical Angle	Navigation Specification
001	VA	-	-	328 (321.1)	-7.3	-	-	+800	-	-	RNP1
002	DF	BD300	-	-	-7.3	-	L	-	-	-	RNP1
003	TF	BD301	-	116 (108.7)	-7.3	7.3	-	+5000	-	-	RNP1
004	TF	KEC	-	116 (108.8)	-7.3	20.3	-	-	-	-	RNP1

CHANGE : Navigation Specification(Basic RNP1 → RNP1).

STANDARD ARRIVAL CHART - INSTRUMENT

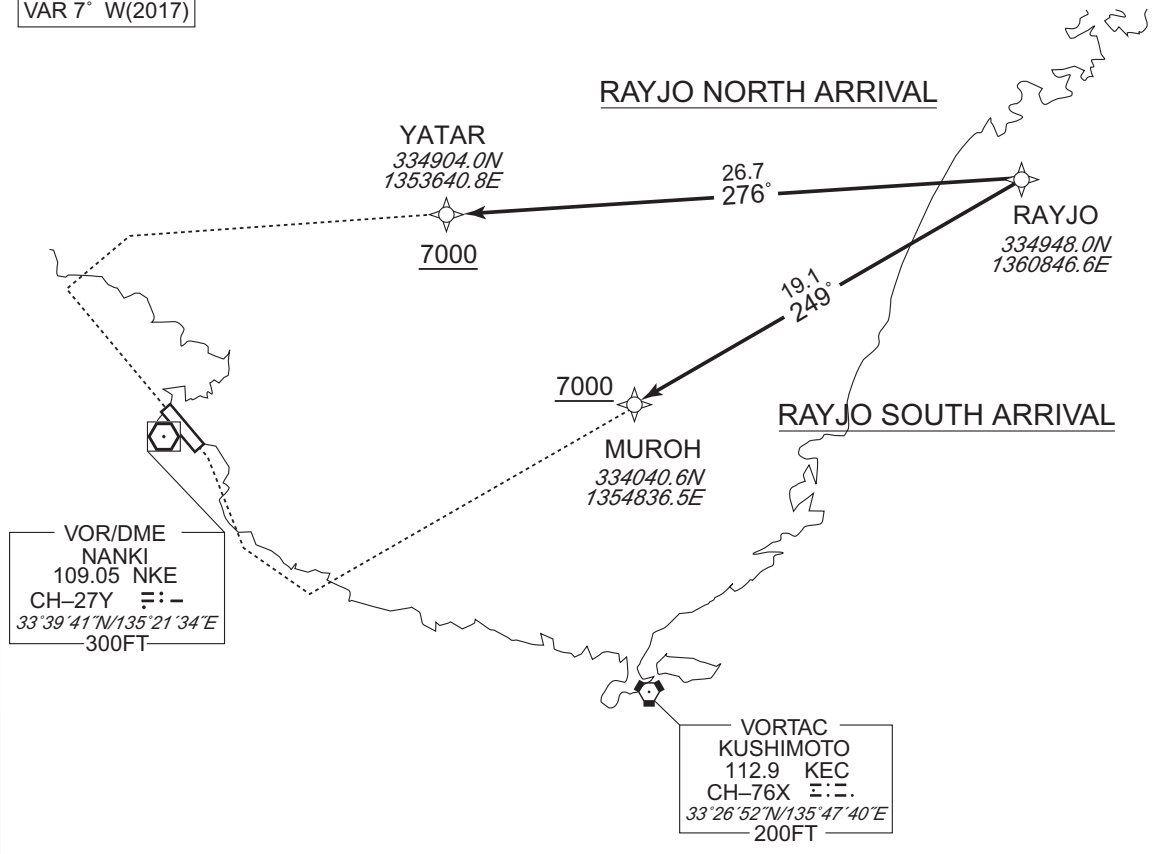
RJBD / NANKI-SHIRAHAMA RNAV STAR

RAYJO NORTH ARRIVAL / RAYJO SOUTH ARRIVAL

RNP1

Note GNSS required.

VAR 7° W(2017)



CHANGE : Navigation Specification(Basic RNP1 → RNP1).

RAYJO NORTH ARRIVAL

From RAYJO, to YATAR at or above 7000FT.

Serial Number	Path Descriptor	Waypoint Identifier	Fly Over	Course °M(°T)	Magnetic Variation	Distance (NM)	Turn Direction	Altitude (FT)	Speed (KIAS)	Vertical Angle	Navigation Specification
001	IF	RAYJO	-	-	-7.3	-	-	-	-	-	RNP1
002	TF	YATAR	-	276 (268.6)	-7.3	26.7	-	+7000	-	-	RNP1

RAYJO SOUTH ARRIVAL

From RAYJO, to MUROH at or above 7000FT.

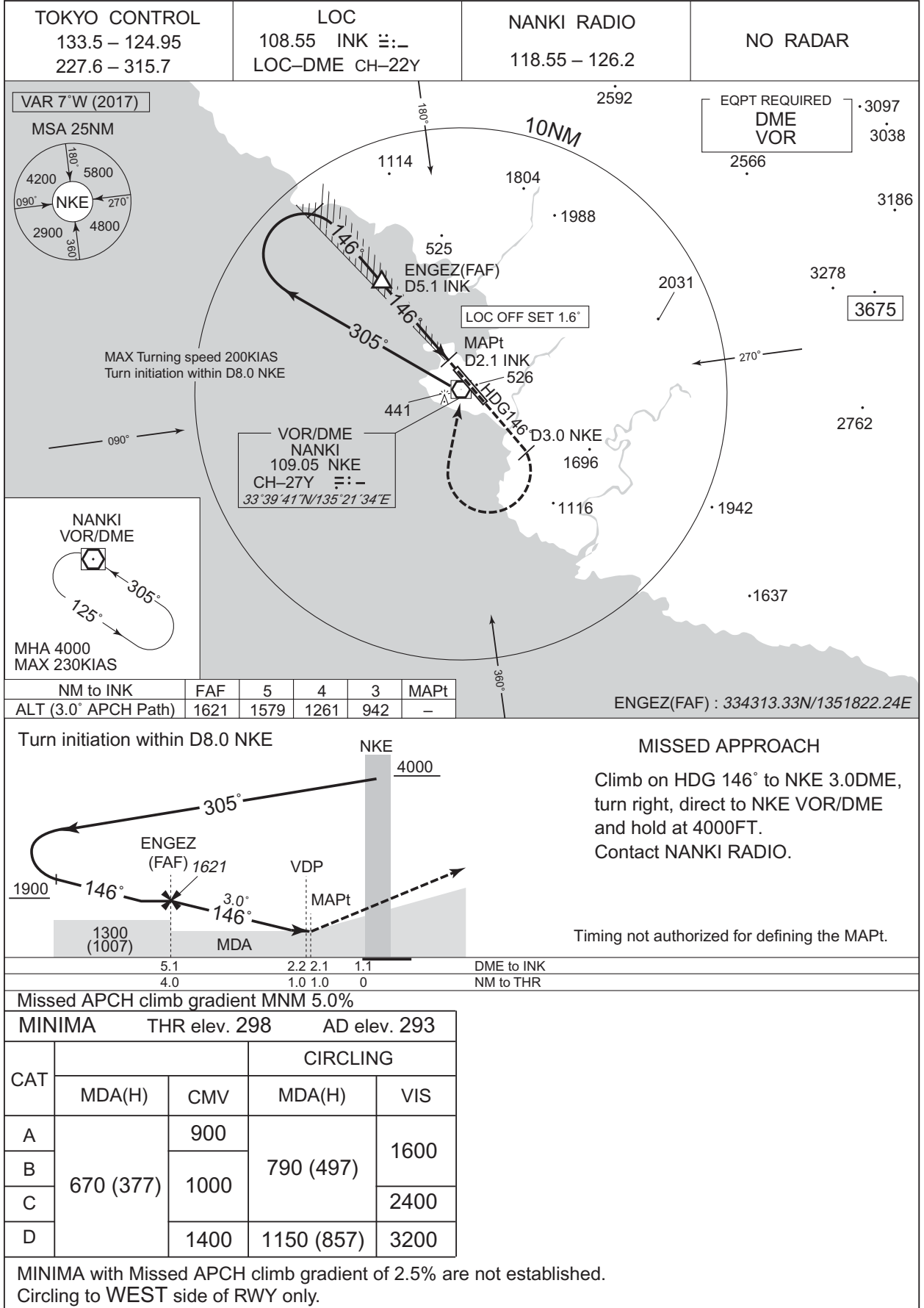
Serial Number	Path Descriptor	Waypoint Identifier	Fly Over	Course °M(°T)	Magnetic Variation	Distance (NM)	Turn Direction	Altitude (FT)	Speed (KIAS)	Vertical Angle	Navigation Specification
001	IF	RAYJO	-	-	-7.3	-	-	-	-	-	RNP1
002	TF	MUROH	-	249 (241.5)	-7.3	19.1	-	+7000	-	-	RNP1

INTENTIONALLY LEFT BLANK

INSTRUMENT APPROACH CHART

RJBD / NANKI-SHIRAHAMA

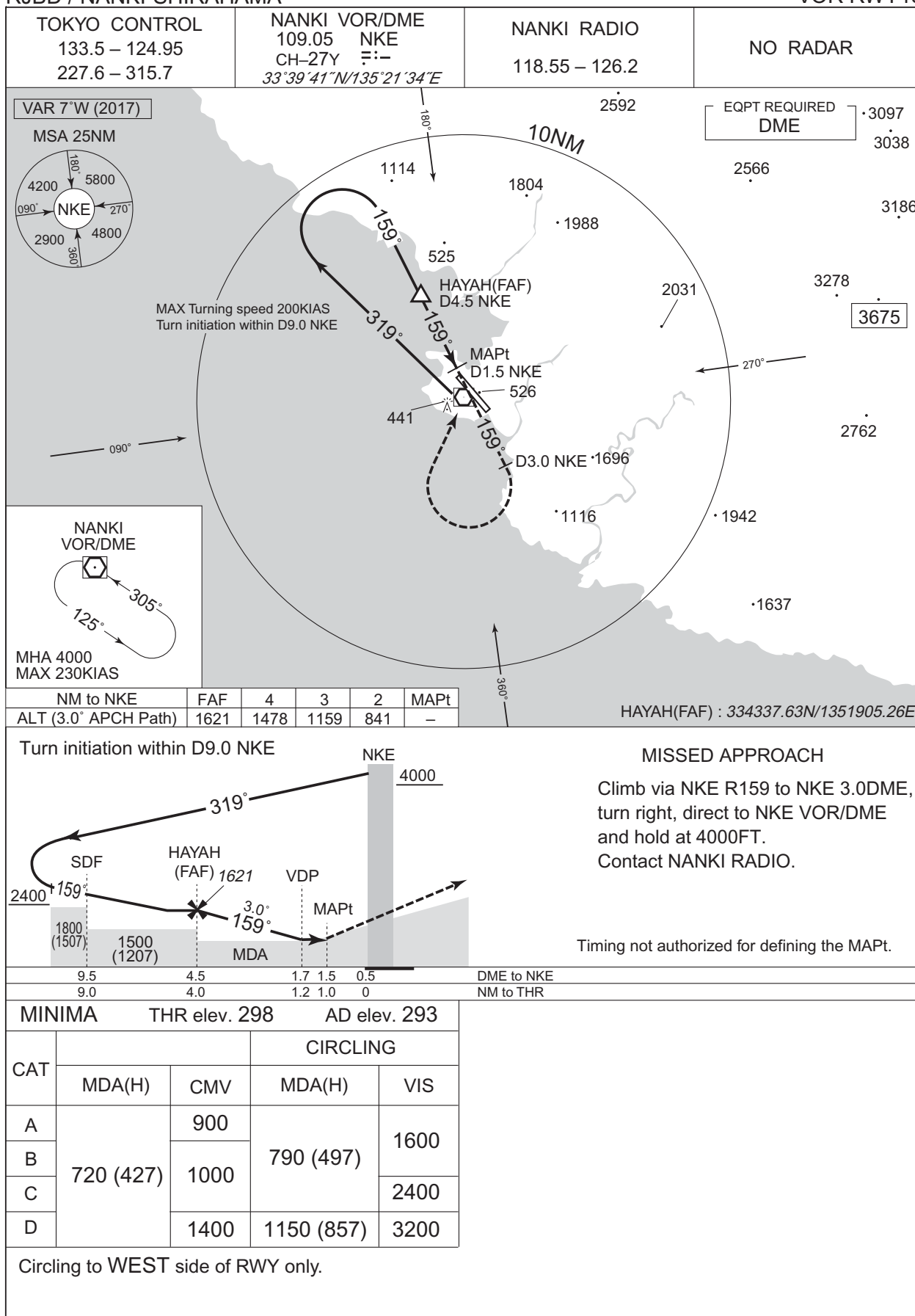
LOC RWY15



INSTRUMENT APPROACH CHART

RJBD / NANKI-SHIRAHAMA

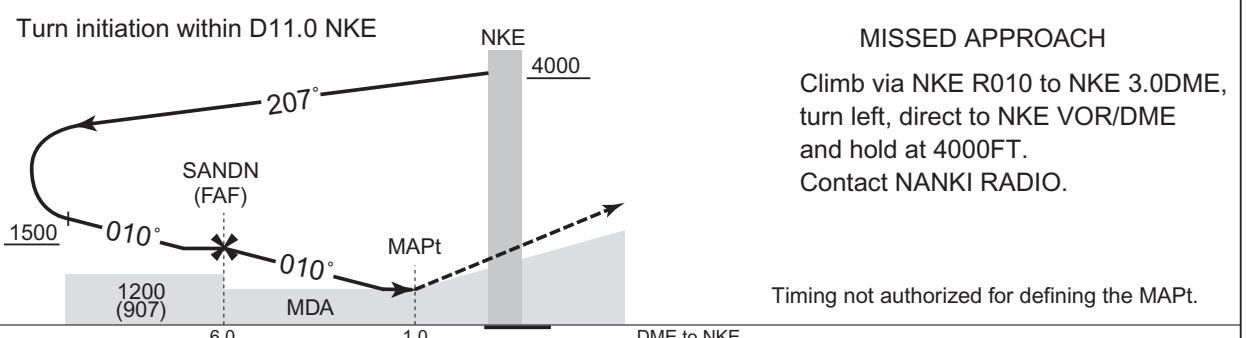
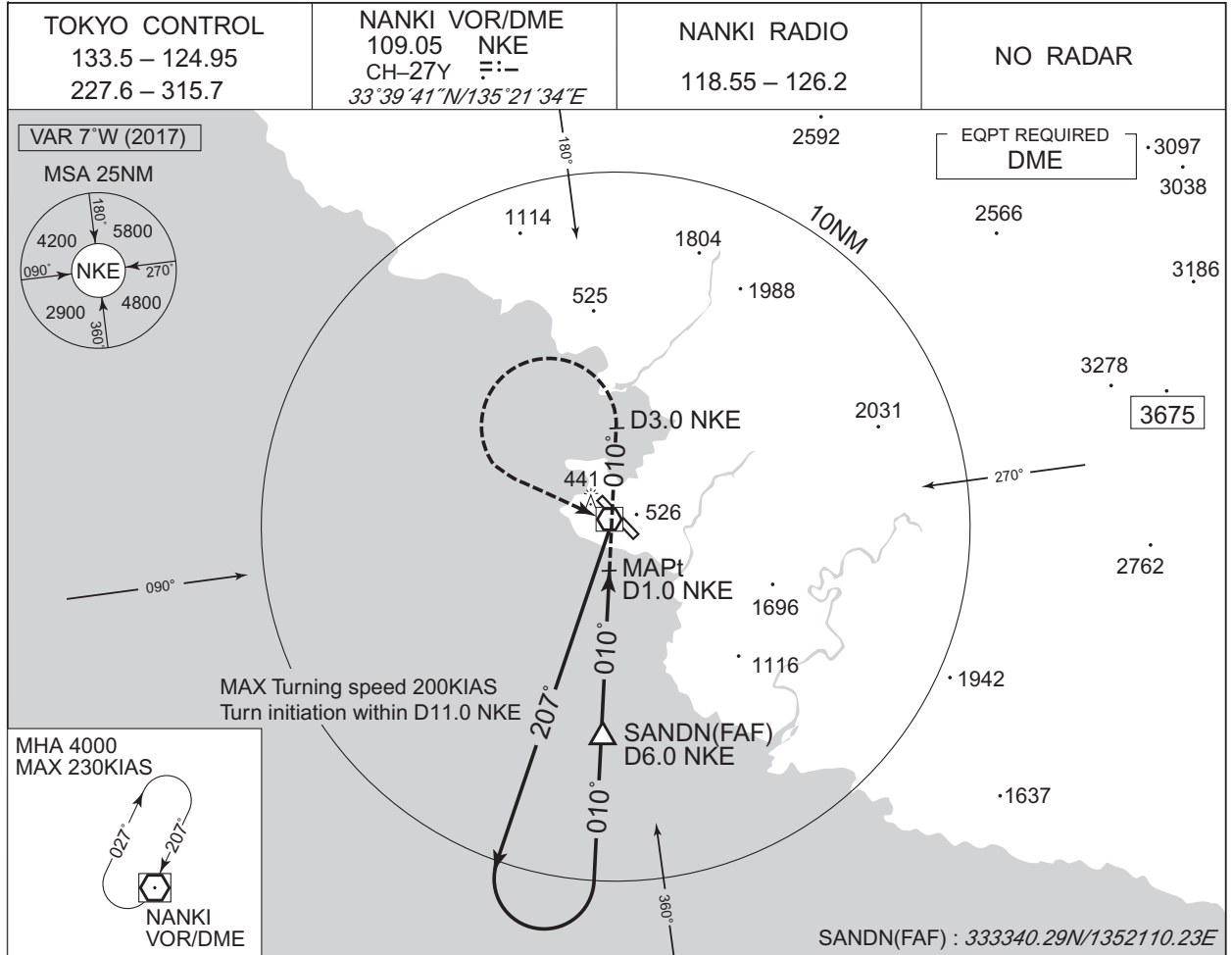
VOR RWY15



INSTRUMENT APPROACH CHART

RJBD / NANKI-SHIRAHAMA

VOR A



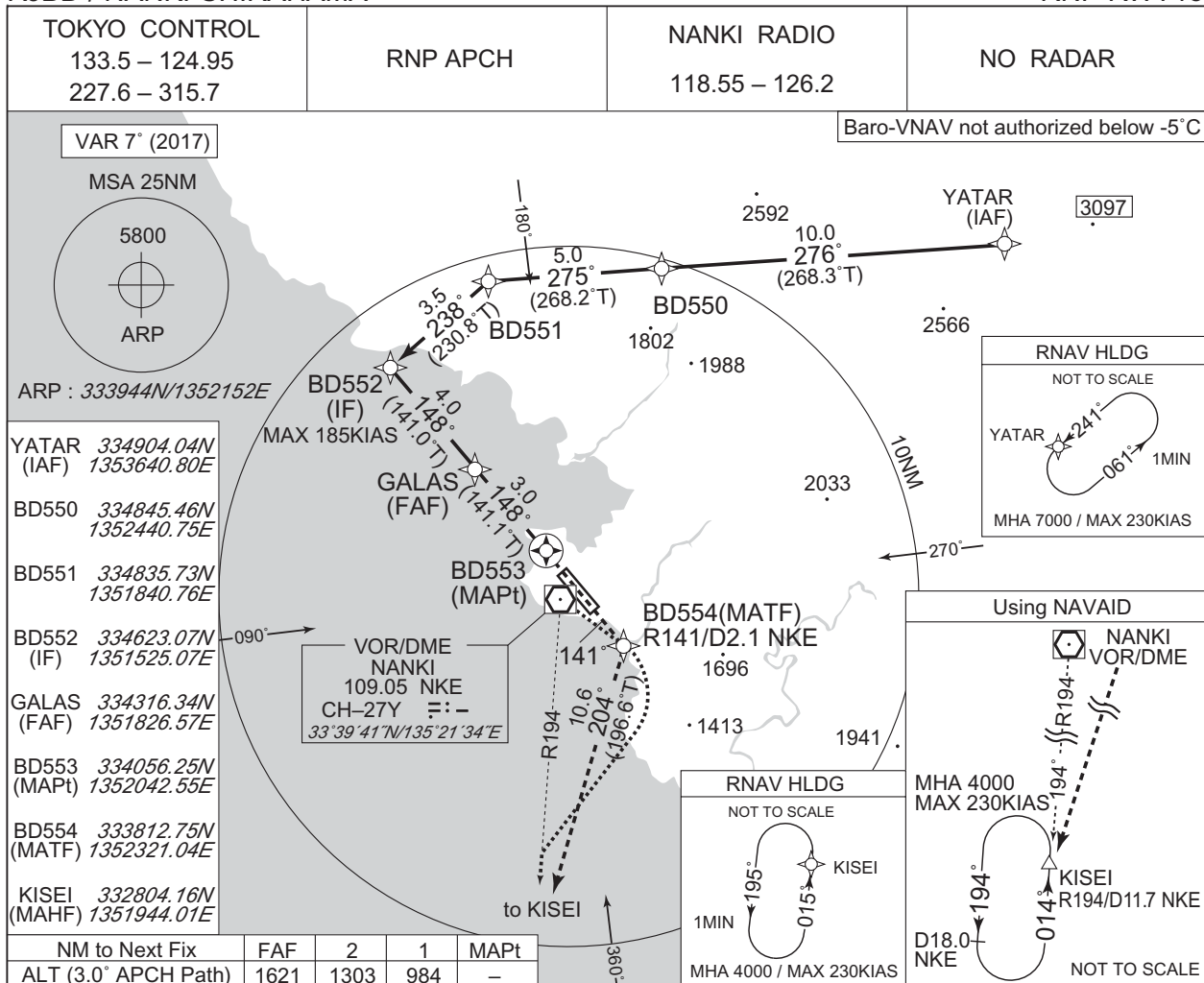
MINIMA		AD elev. 293
CAT	CIRCLING	
	MDA(H)	VIS
A		1600
B	790 (497)	
C		2400
D	1150 (857)	3200

Circling to WEST side of RWY only.

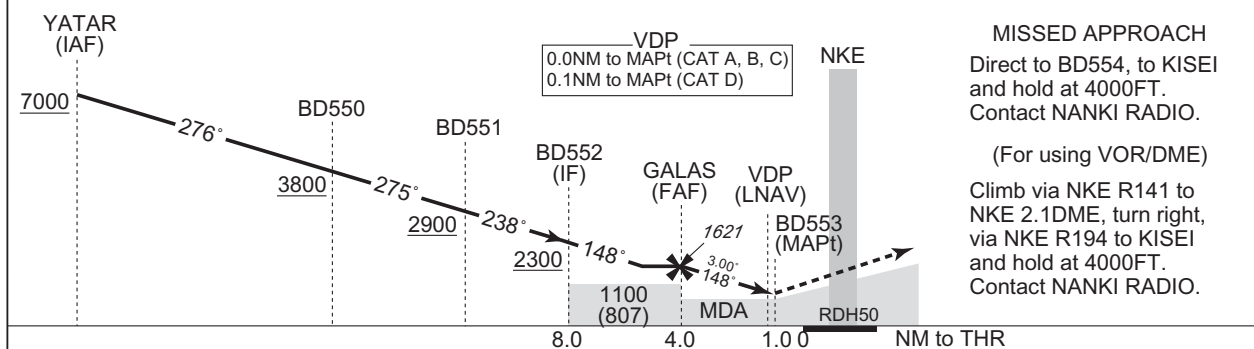
INSTRUMENT APPROACH CHART

RJBD / NANKI-SHIRAHAMA

RNP RWY15



CHANGE:PROC renamed. Requirement for RNP.



Missed APCH climb gradient MNM 5.0%

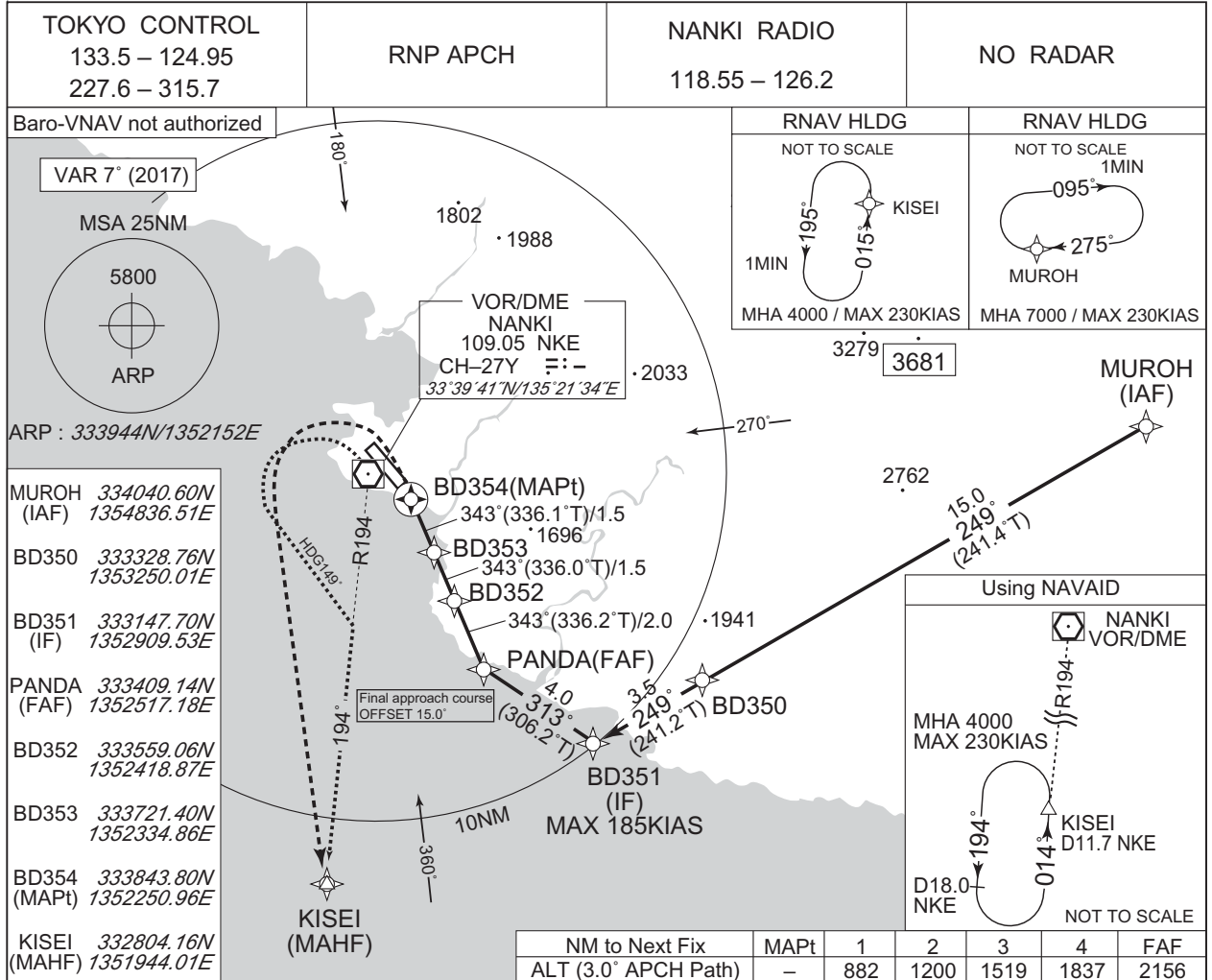
MINIMA		THR elev. 298		AD elev. 293		
CAT	LNAV/VNAV		LNAV		CIRCLING	
	DA(H)	CMV	MDA(H)	CMV	MDA(H)	VIS
A	700 (402)	900	660 (367)	900	790 (497)	1600
B		1000		1000		
C	720 (422)	1400	690 (397)	1400		
D	720 (422)	1400	690 (397)	1400	1150 (857)	3200

MINIMA with Missed APCH climb gradient of 2.5% are not established.
Circling to WEST side of RWY only.

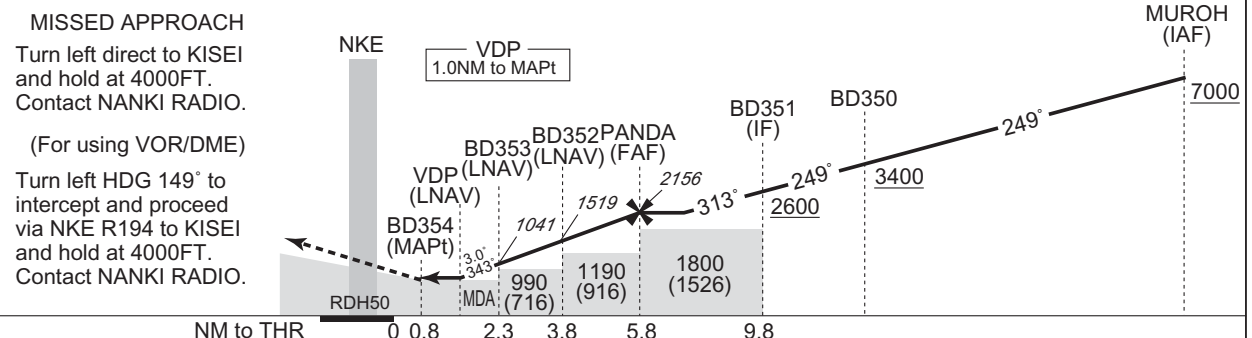
INSTRUMENT APPROACH CHART

RJBD / NANKI-SHIRAHAMA

RNP RWY33



CHANGE:PROC renamed. Requirement for RNP:



MINIMA		THR elev. 274		AD elev. 293		
CAT	LNAV/VNAV		LNAV		CIRCLING	
	DA(H)	CMV	MDA(H)	CMV	MDA(H)	VIS
A	Not applicable		860 (586)	1500	860 (567)	1600
B				2000		2400
C				1150 (857)	3200	
D						

Circling to WEST side of RWY only.

INTENTIONALLY LEFT BLANK

RJBD / NANKI SHIRAHAMA

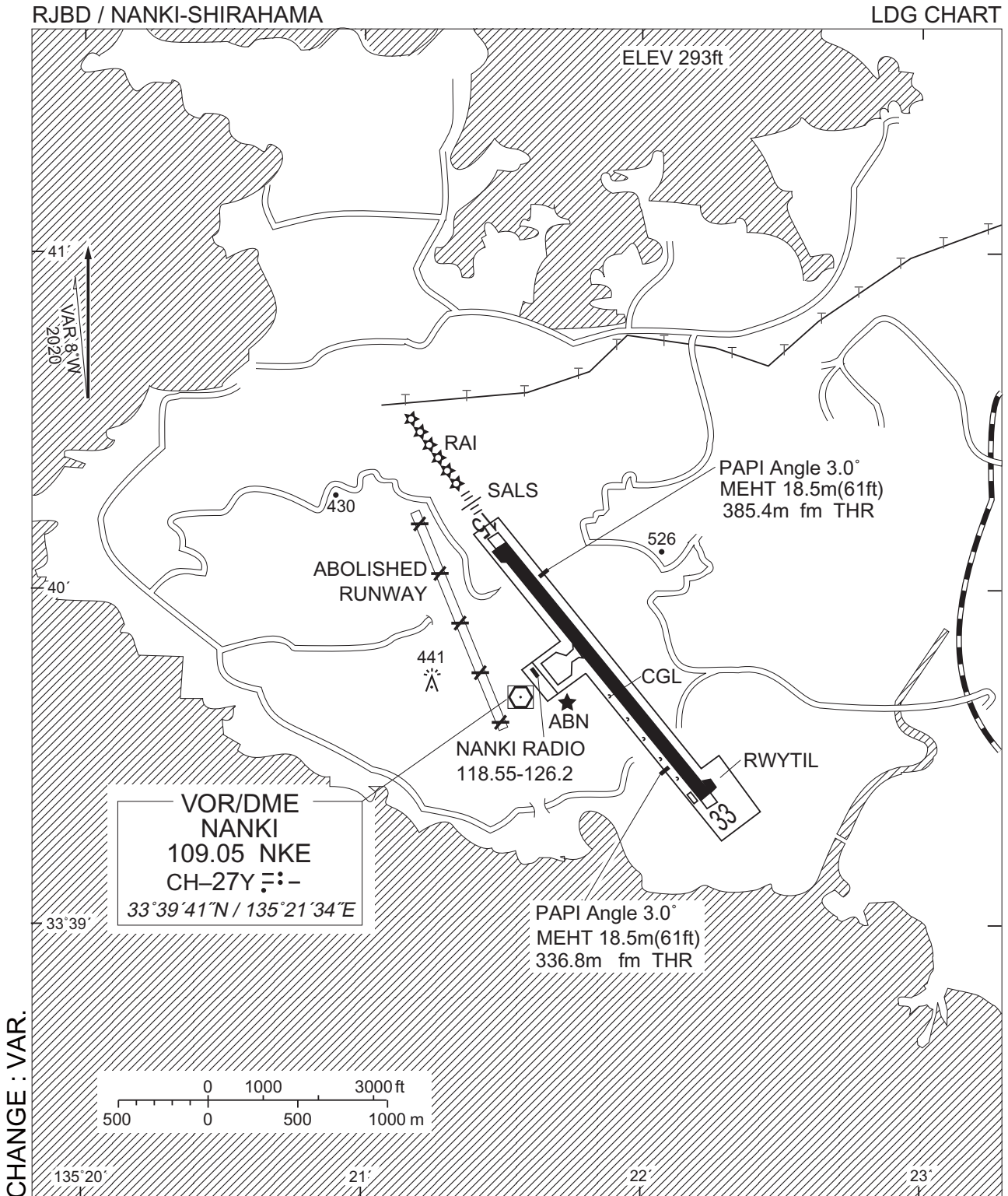
Visual REP



※図中に標高を示す数字がある場合、単位はメートル(m)である。The unit of measurement used to express elevation is meter(m).

CHANGE : Map updated. BRG/DIST from ARP.

Call sign	BRG / DIST from ARP	Remarks
切目 Kirime	318°T / 9.9NM	岬 Cape
南部 Minabe	342°T / 6.6NM	JR駅 Station
生馬 Ikuma	062°T / 3.8NM	橋 Truss-bridge
合川 Gogawa	083°T / 10.0NM	ダム Dam
10NM W	270°T / 10.0NM	海上 Over the Sea
椿 Tsubaki	161°T / 3.7NM	高層ビル High Building
日置 Hiki	143°T / 7.2NM	日置川河口中洲 River-mouth

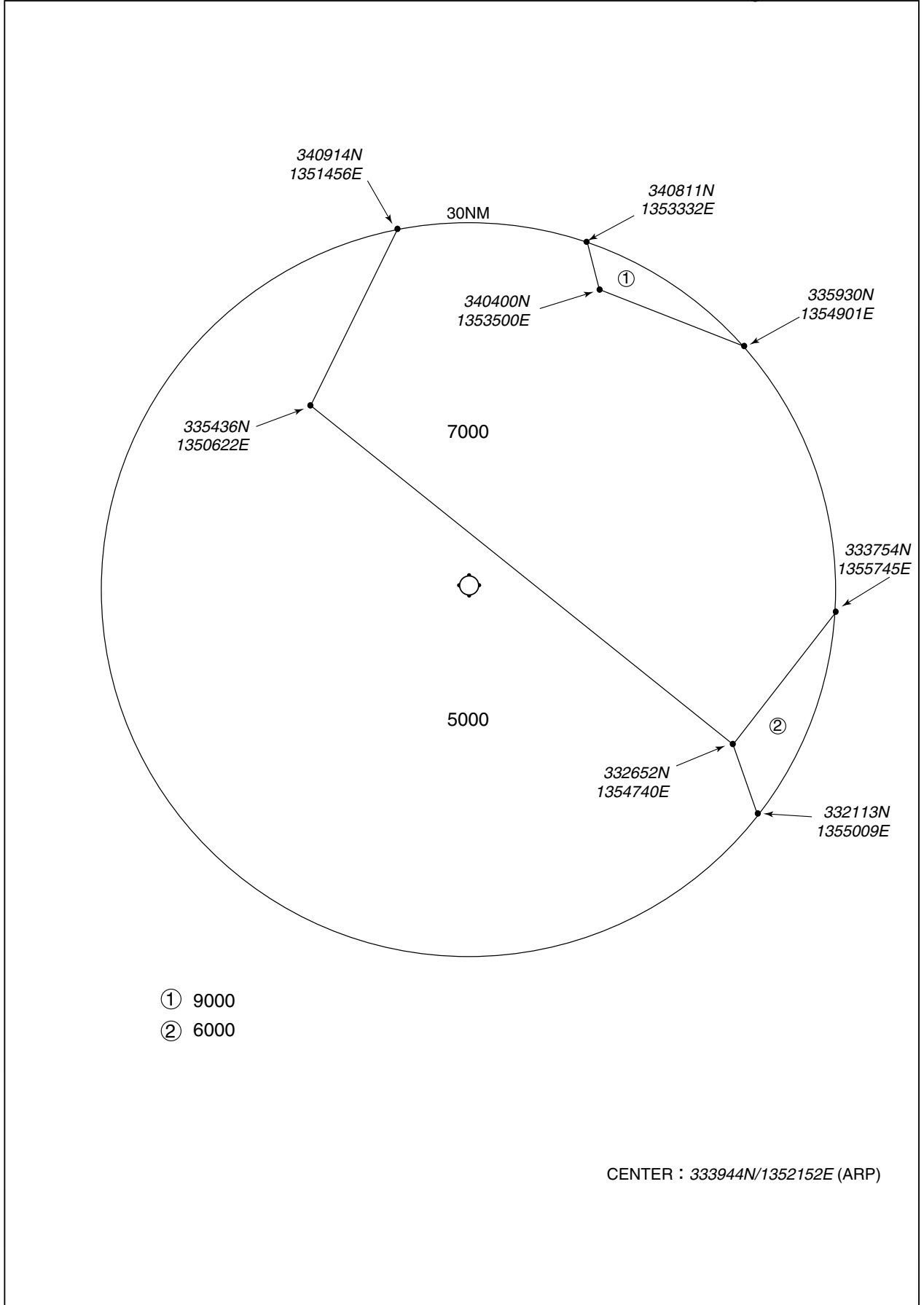


注：南紀白浜空港の西側に廃止された滑走路が(なお、禁止標識が5カ所設置されている)視認できる状態にあるので、南紀白浜空港に着陸する航空機は当該滑走路と誤認しないように注意すること。

NOTE : There is remained the abolished runway with 5 cross[×] markings at west side of Nanki-Shirahama Airport. As the abolished runway in shape is visible, the aircraft which will land on Nanki-Shirahama Airport shall pay a special attention not to confuse the runway.

RJBD / NANKI-SHIRAHAMA

Minimum Vectoring Altitude CHART



INTENTIONALLY LEFT BLANK