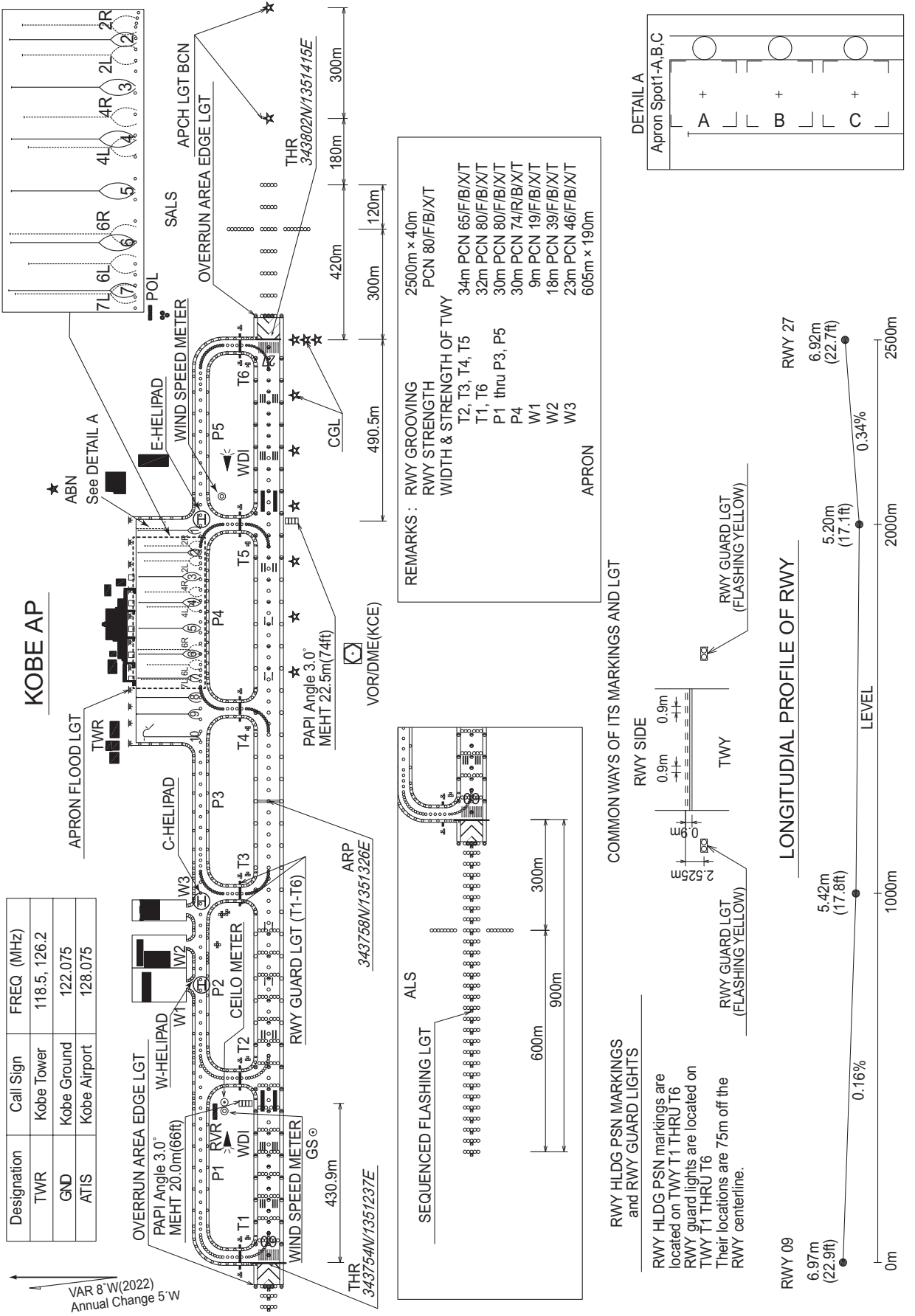


RJBE / KOBE

AD CHART

CHANGE : VAR.



INTENTIONALLY LEFT BLANK

STANDARD DEPARTURE CHART-INSTRUMENT

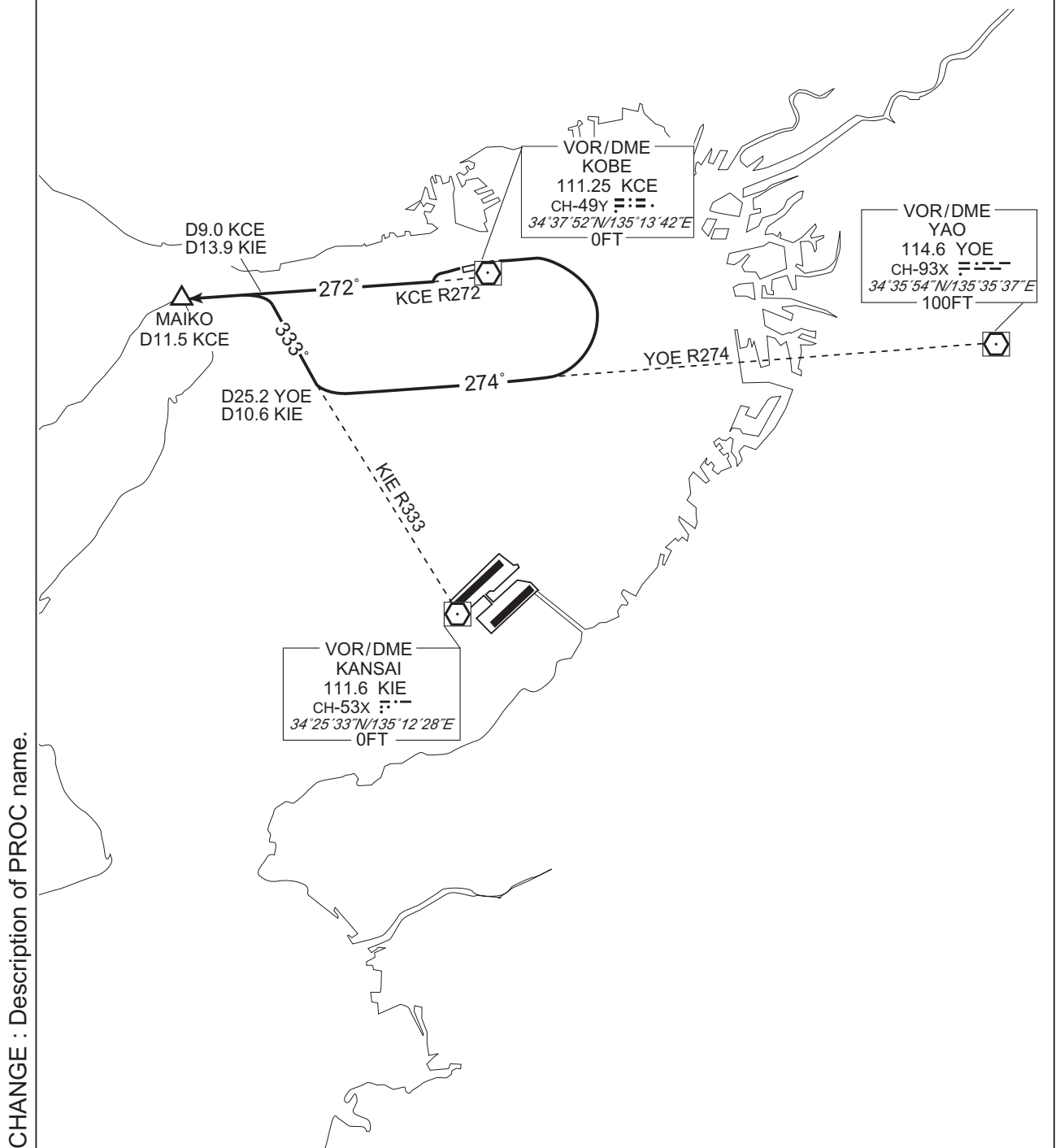
RJBE / KOBE

SID

KOBE FIVE DEPARTURE

RWY09: Turn right, climb via YOE R274 to intercept and proceed via KIE R333, via KCE R272 to MAIKO.

RWY27: Climb via KCE R272 to MAIKO.



CHANGE : Description of PROC name.

STANDARD DEPARTURE CHART - INSTRUMENT

RJBE / KOBE

TRANSITION

KIBI TRANSITION

From over MAIKO, proceed via KCE R272 to KAWAT, via OYE R114 to OYE VOR/DME.

Cross KAWAT at or above 8000FT.

TAMBA TRANSITION

From over MAIKO, proceed via KCE R272 to KAWAT, via TSC R001 to CHIZU via AYAYA, via YME R236 to YME VOR/DME via TAMBA.

Cross KAWAT at or above 8000FT.

KAGAWA TRANSITION

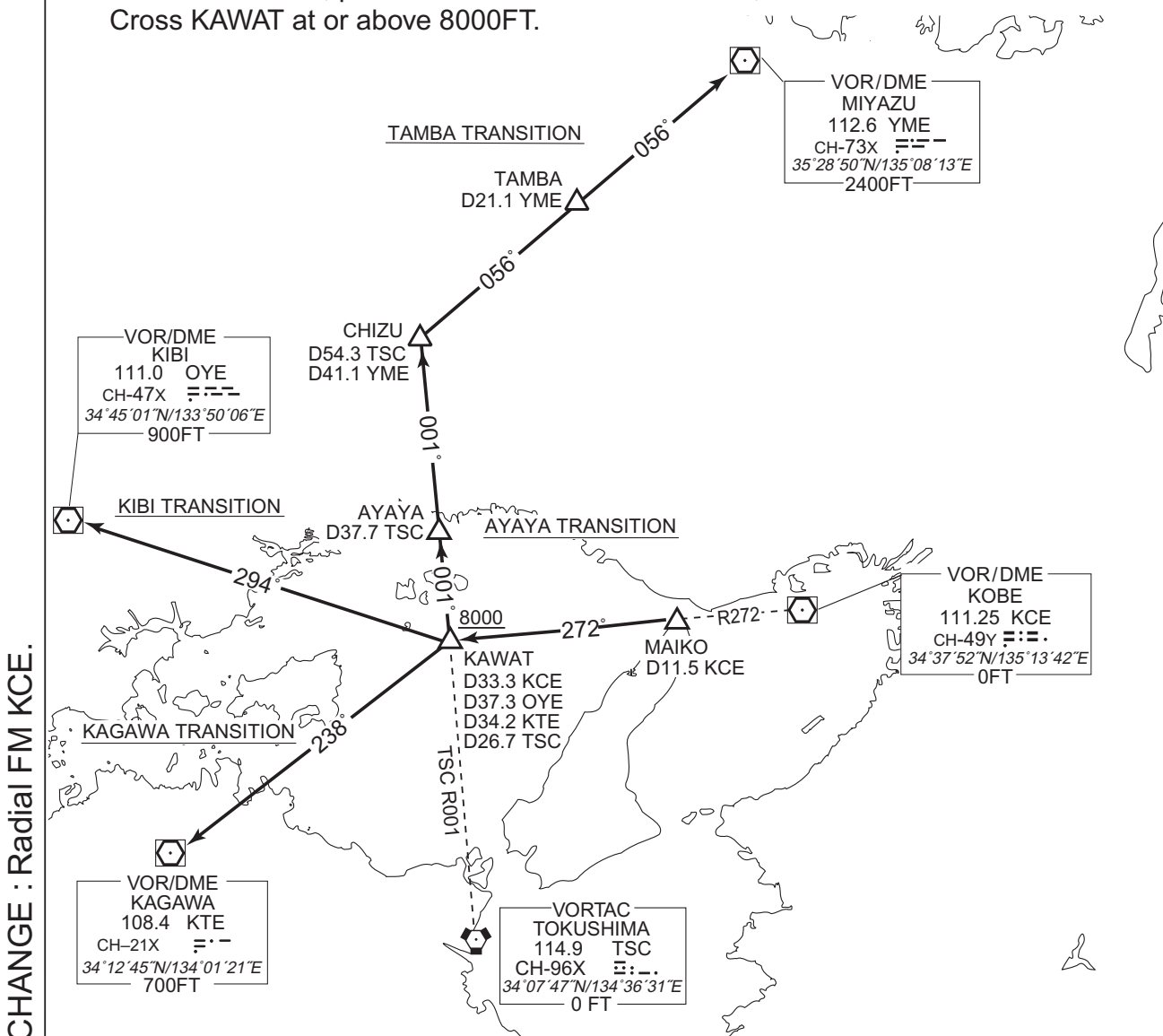
From over MAIKO, proceed via KCE R272 to KAWAT, via KTE R058 to KTE VOR/DME.

Cross KAWAT at or above 8000FT.

AYAYA TRANSITION

From over MAIKO, proceed via KCE R272 to KAWAT, via TSC R001 to AYAYA.

Cross KAWAT at or above 8000FT.



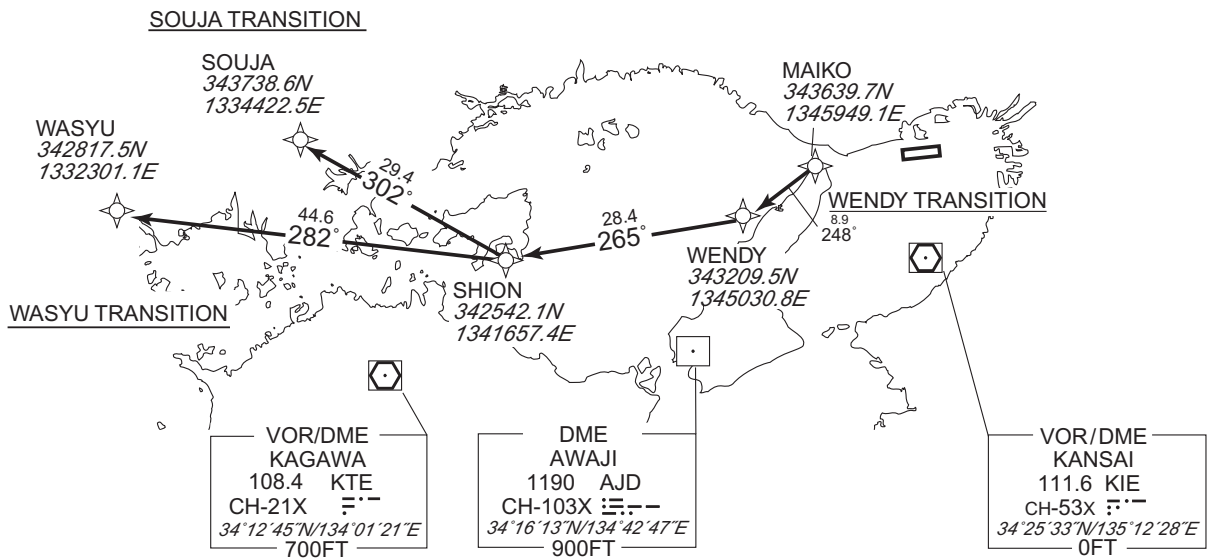
CHANGE : Radial FM KCE.

STANDARD DEPARTURE CHART-INSTRUMENT

RJBE / KOBE RNAV TRANSITION

SOUJA TRANSITION WASYU TRANSITION / WENDY TRANSITION		RNAV1
Note 1) DME/DME/IRU or GNSS required. 2) RADAR service required.	Critical DME	-
	DME GAP	-
	Inappropriate Nav aids	See AD1.1.6.10.3. Inappropriate NAVAIDs for RNAV1

VAR 8°W



CHANGE : Description of VAR.

- SOUJA TRANSITION
From MAIKO, to WENDY, to SHION, to SOUJA.
- WASYU TRANSITION
From MAIKO, to WENDY, to SHION, to WASYU.
- WENDY TRANSITION
From MAIKO, to WENDY.

STANDARD DEPARTURE CHART-INSTRUMENT

RJBE / KOBE

RNAV TRANSITION

SOUJA TRANSITION

Serial Number	Path Descriptor	Waypoint Identifier	Fly Over	Course M°(°T)	Magnetic Variation	Distance (NM)	Turn Direction	Altitude (FT)	Speed (KIAS)	Vertical Angle	Navigation Specification
001	IF	MAIKO	—	—	-7.9	—	—	—	—	—	RNAV1
002	TF	WENDY	—	248 (239.6)	-7.9	8.9	—	—	—	—	RNAV1
003	TF	SHION	—	265 (257.0)	-7.9	28.4	—	—	—	—	RNAV1
004	TF	SOUJA	—	302 (294.1)	-7.9	29.4	—	—	—	—	RNAV1

WASYU TRANSITION

Serial Number	Path Descriptor	Waypoint Identifier	Fly Over	Course M°(°T)	Magnetic Variation	Distance (NM)	Turn Direction	Altitude (FT)	Speed (KIAS)	Vertical Angle	Navigation Specification
001	IF	MAIKO	—	—	-7.9	—	—	—	—	—	RNAV1
002	TF	WENDY	—	248 (239.6)	-7.9	8.9	—	—	—	—	RNAV1
003	TF	SHION	—	265 (257.0)	-7.9	28.4	—	—	—	—	RNAV1
004	TF	WASYU	—	282 (273.6)	-7.9	44.6	—	—	—	—	RNAV1

WENDY TRANSITION

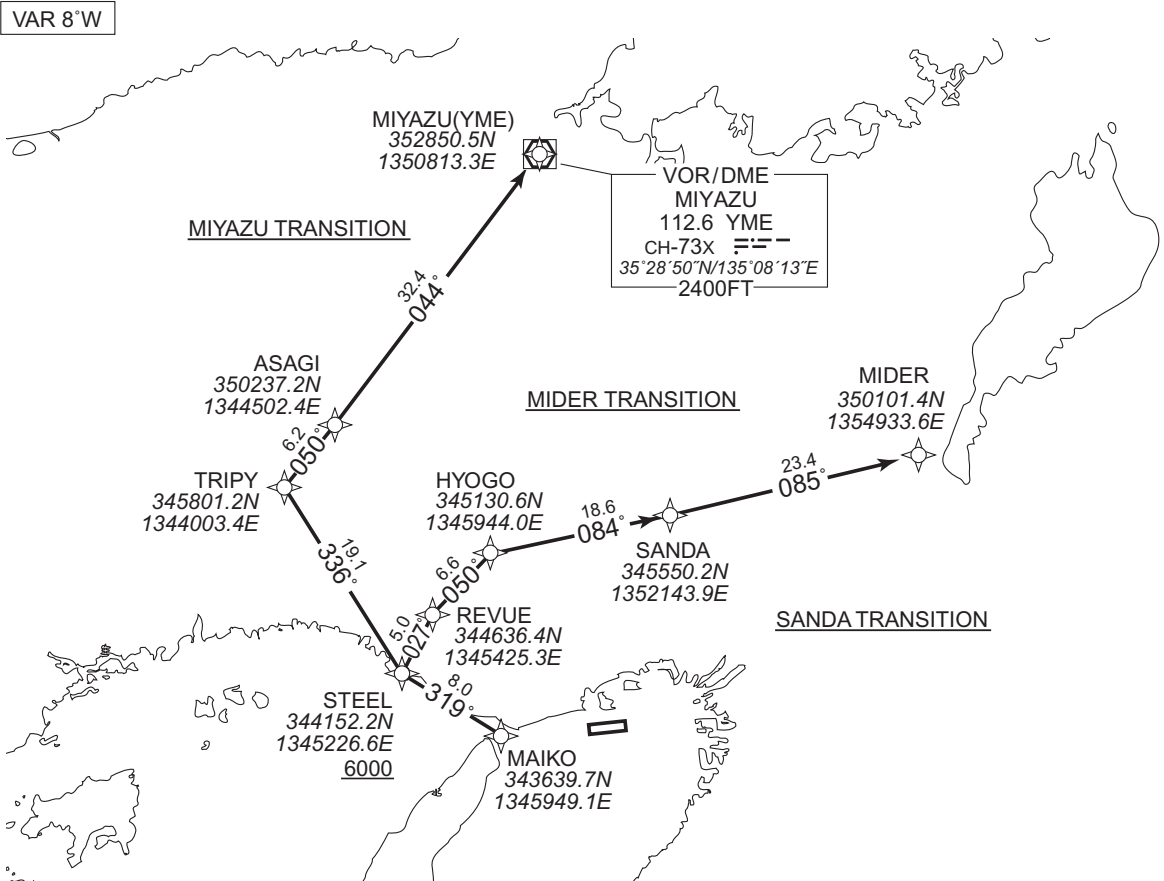
Serial Number	Path Descriptor	Waypoint Identifier	Fly Over	Course M°(°T)	Magnetic Variation	Distance (NM)	Turn Direction	Altitude (FT)	Speed (KIAS)	Vertical Angle	Navigation Specification
001	IF	MAIKO	—	—	-7.9	—	—	—	—	—	RNAV1
002	TF	WENDY	—	248 (239.6)	-7.9	8.9	—	—	—	—	RNAV1

CHANGE : VAR. PROC course.

STANDARD DEPARTURE CHART-INSTRUMENT

RJBE / KOBE RNAV TRANSITION

MIDER TRANSITION / SANDA TRANSITION / MIYAZU TRANSITION			RNAV1
Note 1) DME/DME/IRU or GNSS required. 2) RADAR service required.		Critical DME	MIYAZU TRANSITION AJD : 4.2NM to ASAGI – 27.3NM to YME KIE : 10.3NM to YME – 9.3NM to YME
DME GAP	MIYAZU TRANSITION 9.3NM to YME – YME		
Inappropriate NavAids		See AD1.1.6.10.3. Inappropriate NAVAIDs for RNAV1	



CHANGE : SHTLE TRANSITION abolished. SANDA TRANSITION established.

MIDER TRANSITION

From MAIKO, to STEEL at or above 6000FT, to REVUE, to HYOGO, to SANDA, to MIDER.

SANDA TRANSITION

From MAIKO, to STEEL at or above 6000FT, to REVUE, to HYOGO, to SANDA.

MIYAZU TRANSITION

From MAIKO, to STEEL at or above 6000FT, to TRIPY, to ASAGI, to YME.

STANDARD DEPARTURE CHART-INSTRUMENT

RJBE / KOBE

RNAV TRANSITION

MIDER TRANSITION

Serial Number	Path Descriptor	Waypoint Identifier	Fly Over	Course °M(^T)	Magnetic Variation	Distance (NM)	Turn Direction	Altitude (FT)	Speed (KIAS)	Vertical Angle	Navigation Specification
001	IF	MAIKO	—	—	-7.9	—	—	—	—	—	RNAV1
002	TF	STEEL	—	319 (310.7)	-7.9	8.0	—	+6000	—	—	RNAV1
003	TF	REVUE	—	027 (018.9)	-7.9	5.0	—	—	—	—	RNAV1
004	TF	HYOGO	—	050 (041.6)	-7.9	6.6	—	—	—	—	RNAV1
005	TF	SANDA	—	084 (076.4)	-7.9	18.6	—	—	—	—	RNAV1
006	TF	MIDER	—	085 (077.1)	-7.9	23.4	—	—	—	—	RNAV1

SANDA TRANSITION

Serial Number	Path Descriptor	Waypoint Identifier	Fly Over	Course °M(^T)	Magnetic Variation	Distance (NM)	Turn Direction	Altitude (FT)	Speed (KIAS)	Vertical Angle	Navigation Specification
001	IF	MAIKO	—	—	-7.9	—	—	—	—	—	RNAV1
002	TF	STEEL	—	319 (310.7)	-7.9	8.0	—	+6000	—	—	RNAV1
003	TF	REVUE	—	027 (018.9)	-7.9	5.0	—	—	—	—	RNAV1
004	TF	HYOGO	—	050 (041.6)	-7.9	6.6	—	—	—	—	RNAV1
005	TF	SANDA	—	084 (076.4)	-7.9	18.6	—	—	—	—	RNAV1

MIYAZU TRANSITION

Serial Number	Path Descriptor	Waypoint Identifier	Fly Over	Course °M(^T)	Magnetic Variation	Distance (NM)	Turn Direction	Altitude (FT)	Speed (KIAS)	Vertical Angle	Navigation Specification
001	IF	MAIKO	—	—	-7.9	—	—	—	—	—	RNAV1
002	TF	STEEL	—	319 (310.7)	-7.9	8.0	—	+6000	—	—	RNAV1
003	TF	TRIPY	—	336 (327.9)	-7.9	19.1	—	—	—	—	RNAV1
004	TF	ASAGI	—	050 (041.6)	-7.9	6.2	—	—	—	—	RNAV1
005	TF	YME	—	044 (035.7)	-7.9	32.4	—	—	—	—	RNAV1

CHANGE : SHTLE TRANSITION abolished. SANDA TRANSITION established.

STANDARD ARRIVAL CHART-INSTRUMENT

RJBE / KOBE

STAR

AYAYA ARRIVAL

From over AYAYA, proceed via TSC R001 to intercept and proceed via KCE R283 to TRACY, via KIE R311 to intercept and proceed via KCE R273 to SIOJI.

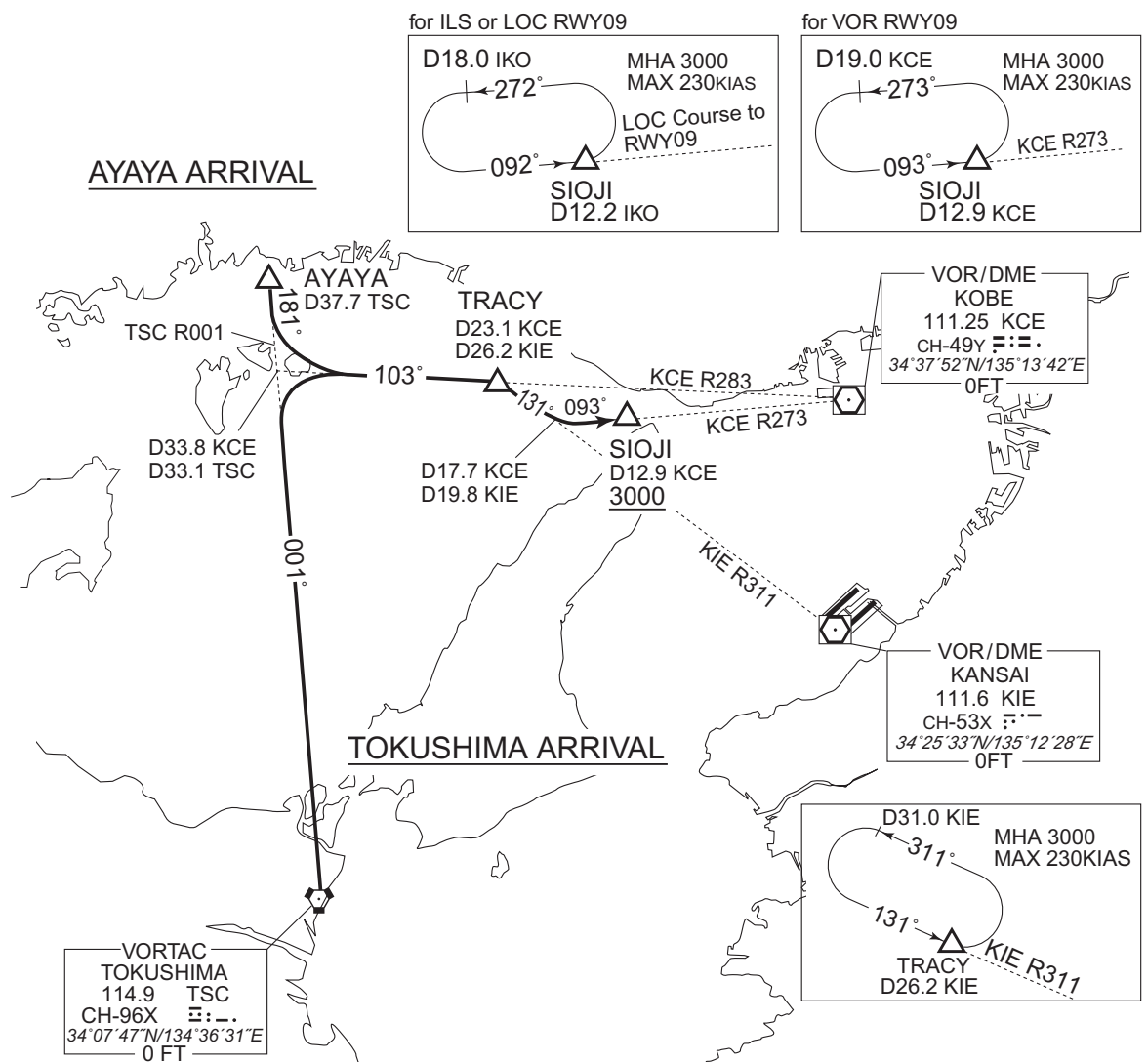
Cross SIOJI at or above 3000FT.

TOKUSHIMA ARRIVAL

From over TSC VORTAC, proceed via TSC R001 to intercept and proceed via KCE R283 to TRACY, via KIE R311 to intercept and proceed via KCE R273 to SIOJI.

Cross SIOJI at or above 3000FT.

CHANGE : PROC. HLDG pattern (TRACY). KANSAI VOR/DME relocated(KNE→KIE).



STANDARD ARRIVAL CHART-INSTRUMENT

RJBE / KOBE

RNAV STAR RWY09

HANSHIN NORTH ARRIVAL
HANSHIN SOUTH ARRIVAL
HANSHIN WEST ARRIVAL

RNAV1

Note 1) DME/DME/IRU or GNSS required.
2) RADAR service required.

VAR 8°W

Using NAVAID

D31.0 KIE

MHA 3000
MAX 230KIAS

311°

131°

KIE R311

TRACY
D26.2 KIE

VOR/DME
KANSAI

111.6 KIE
CH-53X
34°25'33"N/135°12'28"E
0FT

VOR/DME
KOBE

111.25 KCE
CH-49Y
34°37'52"N/135°13'42"E
0FT

TRACY
343949.3N
1344547.8E

SIOJI
343645.2N
1345808.8E
3000

OKADA
343703.1N
1343923.8E

HANSHIN NORTH ARRIVAL

for ILS or LOC RWY09

Using NAVAID

D18.0 IKO

MHA 3000
MAX 230KIAS

272°

092°

SIOJI
D12.2 IKO

LOC Course
to RWY09

for VOR RWY09

Using NAVAID

D19.0 KCE

MHA 3000
MAX 230KIAS

273°

093°

SIOJI
D12.9 KCE

KCE R273

BERTH
340911.4N
1341900.0E

HANSHIN WEST ARRIVAL

KAKEF
341345.9N
1343426.4E
6000

HANSHIN SOUTH ARRIVAL

BECKY
335509.0N
1343030.6E

CHANGE : Description of VAR.

STANDARD ARRIVAL CHART-INSTRUMENT

RJBE / KOBE

RNAV STAR RWY09

HANSHIN NORTH ARRIVAL

From TRACY, to SIOJI at or above 3000FT.

Critical DME	STD : TRACY - SIOJI
DME GAP	-
Inappropriate Nav aids	See AD1.1.6.10.3. Inappropriate NAVAIDs for RNAV1

Serial Number	Path Descriptor	Waypoint Identifier	Fly Over	Course °M(°T)	Magnetic Variation	Distance (NM)	Turn Direction	Altitude (FT)	Speed (KIAS)	Vertical Angle	Navigation Specification
001	IF	TRACY	-	-	-7.9	-	-	-	-	-	RNAV1
002	TF	SIOJI	-	115 (106.7)	-7.9	10.6	-	+3000	-	-	RNAV1

HANSHIN SOUTH ARRIVAL

From BECKY, to KAKEF at or above 6000FT, to OKADA, to TRACY, to SIOJI at or above 3000FT.

Critical DME	GBD : 5.6NM to OKADA – OKADA AJD : OKADA – TRACY STD : 5.0NM to TRACY – SIOJI
DME GAP	-
Inappropriate Nav aids	See AD1.1.6.10.3. Inappropriate NAVAIDs for RNAV1

Serial Number	Path Descriptor	Waypoint Identifier	Fly Over	Course °M(°T)	Magnetic Variation	Distance (NM)	Turn Direction	Altitude (FT)	Speed (KIAS)	Vertical Angle	Navigation Specification
001	IF	BECKY	-	-	-7.9	-	-	-	-	-	RNAV1
002	TF	KAKEF	-	018 (009.9)	-7.9	18.9	-	+6000	-	-	RNAV1
003	TF	OKADA	-	018 (009.9)	-7.9	23.7	-	-	-	-	RNAV1
004	TF	TRACY	-	070 (062.2)	-7.9	6.0	-	-	-	-	RNAV1
005	TF	SIOJI	-	115 (106.7)	-7.9	10.6	-	+3000	-	-	RNAV1

HANSHIN WEST ARRIVAL

From BERTH, to KAKEF at or above 6000FT, to OKADA, to TRACY, to SIOJI at or above 3000FT.

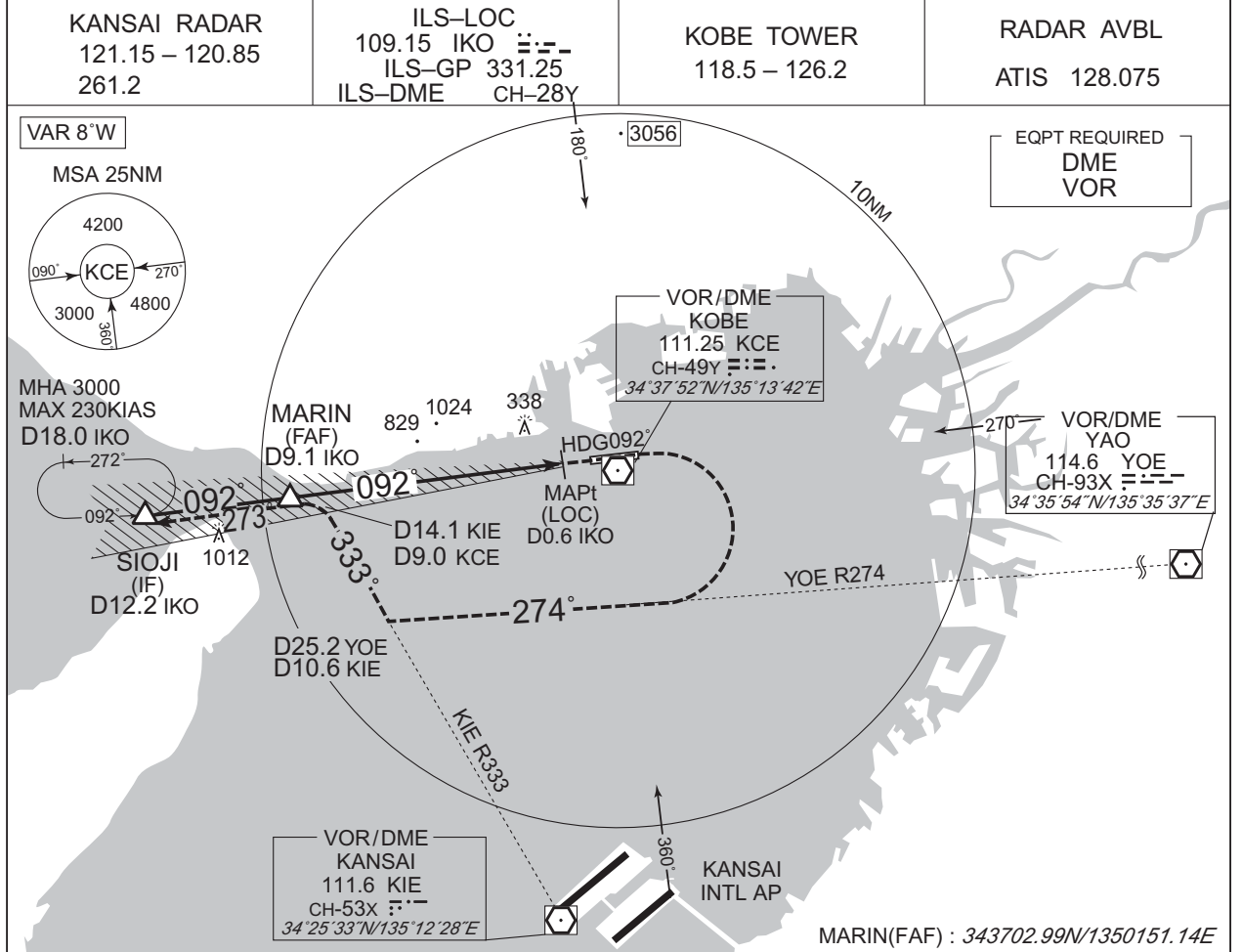
Critical DME	GBD : 5.6NM to OKADA – OKADA AJD : OKADA – TRACY STD : 5.0NM to TRACY – SIOJI
DME GAP	-
Inappropriate Nav aids	See AD1.1.6.10.3. Inappropriate NAVAIDs for RNAV1

Serial Number	Path Descriptor	Waypoint Identifier	Fly Over	Course °M(°T)	Magnetic Variation	Distance (NM)	Turn Direction	Altitude (FT)	Speed (KIAS)	Vertical Angle	Navigation Specification
001	IF	BERTH	-	-	-7.9	-	-	-	-	-	RNAV1
002	TF	KAKEF	-	078 (070.2)	-7.9	13.6	-	+6000	-	-	RNAV1
003	TF	OKADA	-	018 (009.9)	-7.9	23.7	-	-	-	-	RNAV1
004	TF	TRACY	-	070 (062.2)	-7.9	6.0	-	-	-	-	RNAV1
005	TF	SIOJI	-	115 (106.7)	-7.9	10.6	-	+3000	-	-	RNAV1

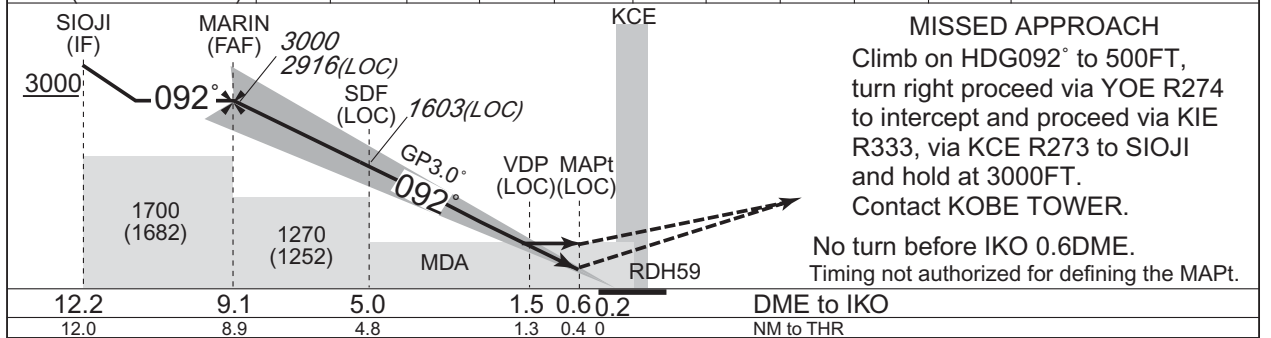
CHANGE : VAR. PROC course.

INSTRUMENT APPROACH CHART

RJBE / KOBE ILS or LOC RWY09



NM to IKO	FAF	9	8	7	6	5	4	3	2	MAPt
ALT (3.0° APCH Path)	2916	2877	2558	2240	1921	1603	1284	966	647	-



MISSED APPROACH
 Climb on HDG092° to 500FT, turn right proceed via YOER274 to intercept and proceed via KIER333, via KCE R273 to SIOJI and hold at 3000FT. Contact KOBE TOWER.
 No turn before IKO 0.6DME. Timing not authorized for defining the MAPt.

Missed APCH climb gradient MNM 3.0%

MINIMA		THR elev. 23		AD elev. 18		
CAT	CAT I		LOC		CIRCLING	
	DA(H)	RVR/CMV	MDA(H)	RVR/CMV	MDA(H)	VIS
A	223 (200)	550	460 (442)	900	510 (492)	1600
B				1000		
C				1400		
D				1400	580 (562)	3200

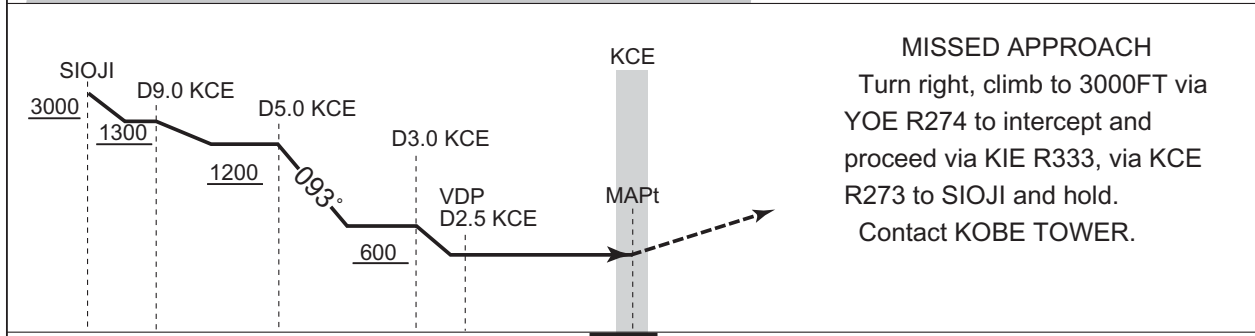
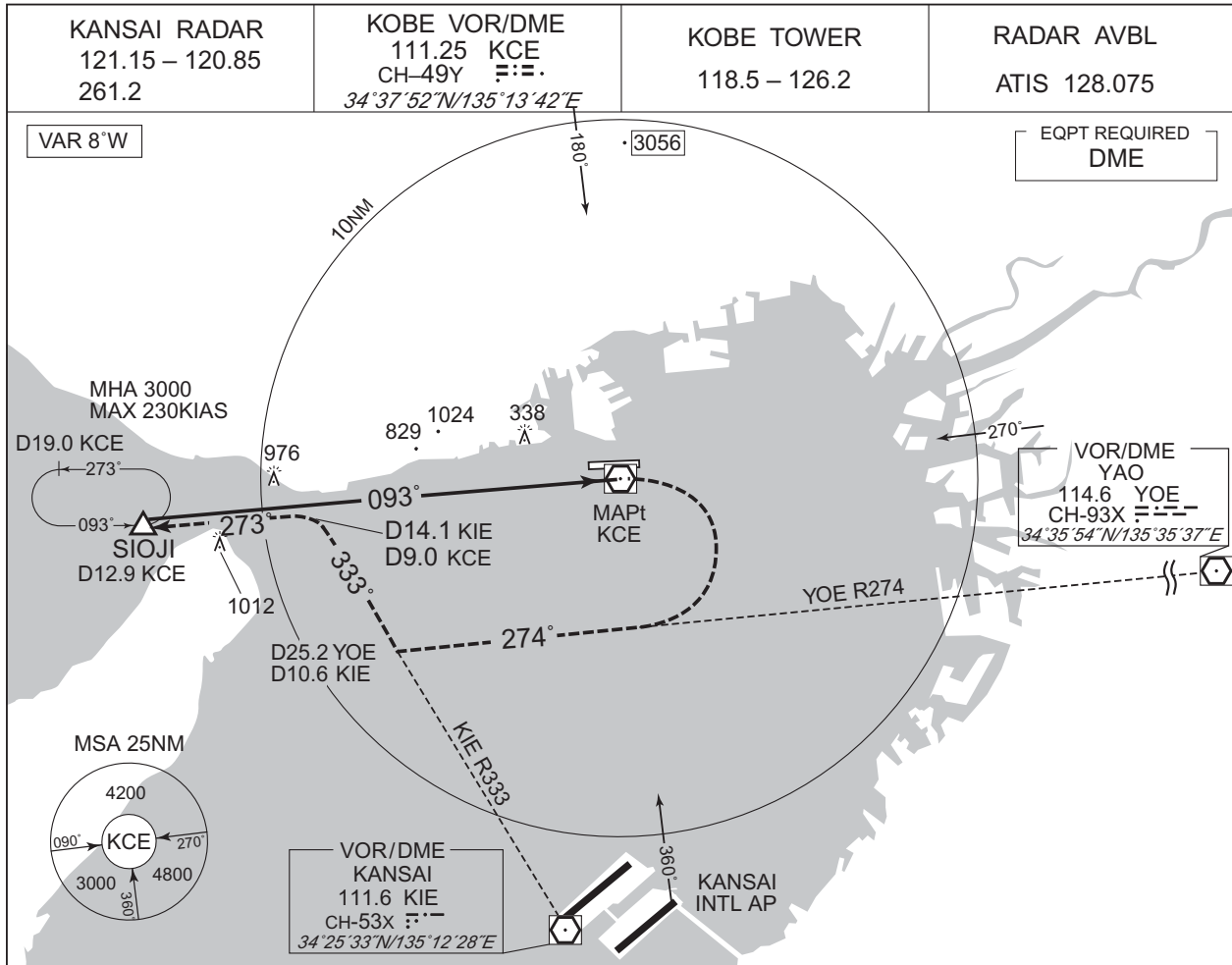
MINIMA with Missed APCH climb gradient of 2.5% are not established. Circling to SOUTH side of RWY only.

CHANGE : Description of VAR.

INSTRUMENT APPROACH CHART

RJBE / KOBE

VOR RWY09



MISSED APPROACH
Turn right, climb to 3000FT via YOE R274 to intercept and proceed via KIE R333, via KCE R273 to SIOJI and hold. Contact KOBE TOWER.

CHANGE : Description of VAR.

	MINIMA	THR elev. 23	AD elev. 18	
CAT			CIRCLING	
	MDA(H)	RVR/CMV	MDA(H)	VIS
A	560 (542)	1000	560 (542)	1600
B		1200		
C		1600	580 (562)	3200
D				

Circling to SOUTH side of RWY only.

RJBE / KOBE

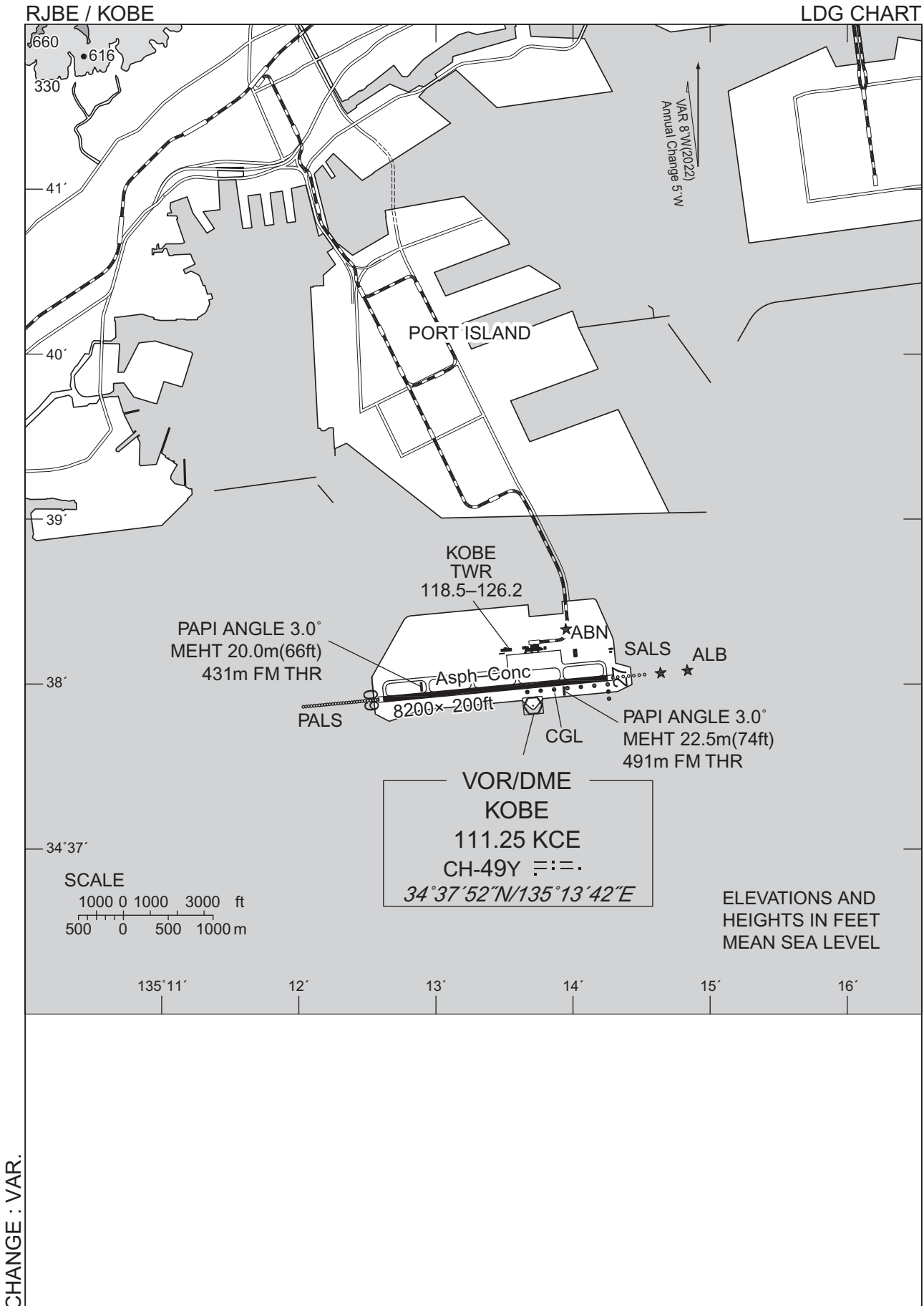
Visual REP



※図中に標高を示す数字がある場合、単位はメートル(m)である。The unit of measurement used to express elevation is meter(m).

CHANGE : VAR.

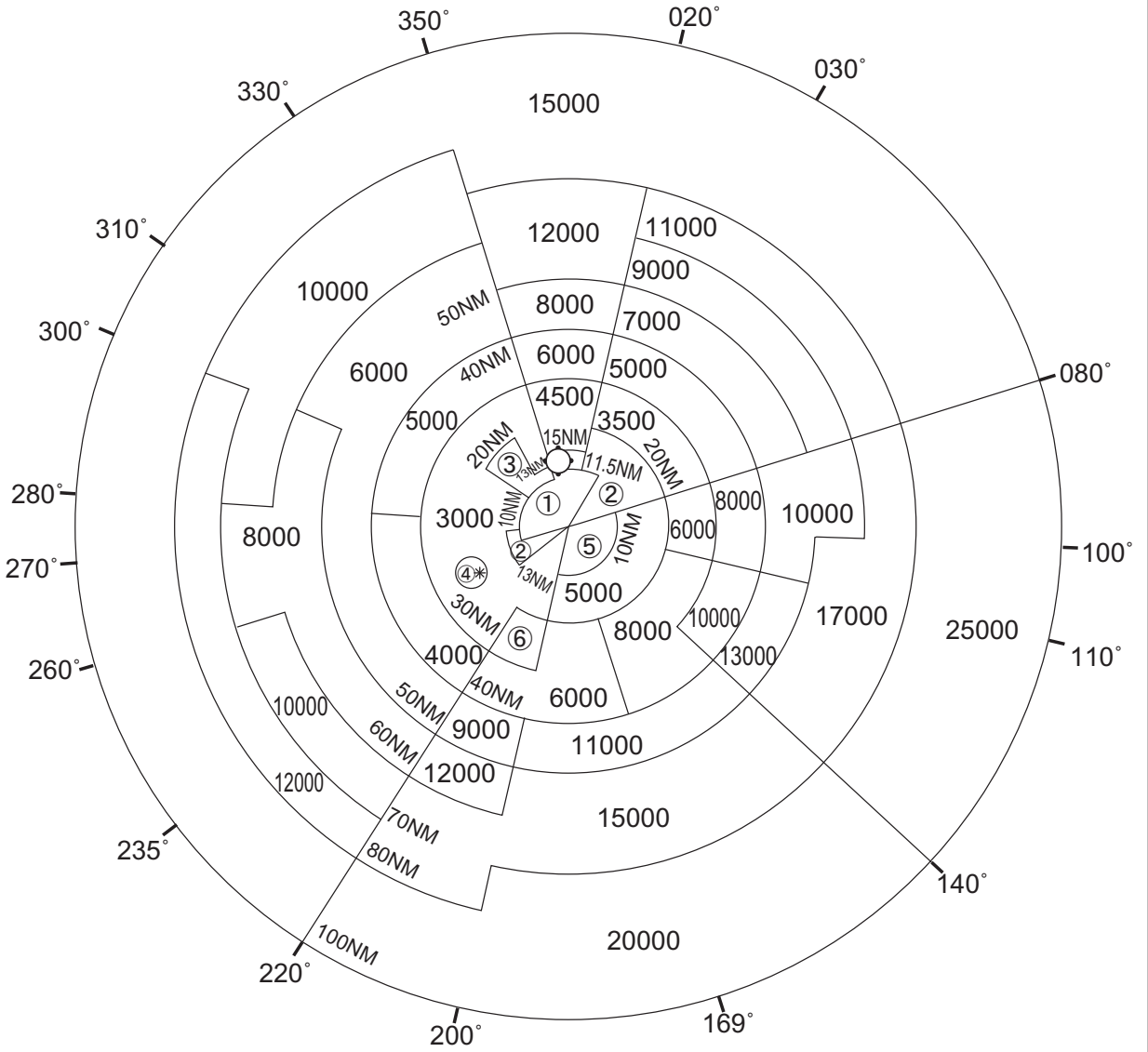
Call sign	BRG / DIST from ARP	Remarks
一ノ谷 Ichinotani	276°T / 5.5NM	JR須磨駅 JR Station
名谷 Myodani	294°T / 7.0NM	神戸市営西神・山手線名谷駅 Station
長田 Nagata	291°T / 4.2NM	JR新長田駅 JR Station
和田岬 Wadamisaki	304°T / 2.2NM	岬 Cape
布引 Nunobiki	342°T / 4.8NM	布引公園 Park
灘浜 Nadahama	359°T / 3.8NM	ハーバーハイウェイ摩耶ランプ Ramp
ポートアイランド Port Island	012°T / 2.0NM	ポートアイランド南埠頭 Southern Warf of Port Island
六甲アイランド Rokko Island	047°T / 4.4NM	六甲アイランド南東端 Southern Edge of Rokko Island
深江 Fukae	038°T / 6.0NM	阪神高速5号湾岸線 深江浜インターチェンジ Interchange
イーストポイント East Point	053°T / 7.2NM	西宮ヨットハーバー防波堤 Breakwater of Nishinomiya Yacht Harbor



RJBE / KOBE

Minimum Vectoring Altitude CHART

VAR 8°W (2022)



- ① 1500
- ② 2000
- ③ 2100
- ④ 3500
- ⑤ 4000
- ⑥ 5000

CENTER : 342636N/1351511E (RJB No.1 RADAR SITE)
 CENTER : 342540N/1351343E (RJB No.2 RADAR SITE)

* : 341405N/1344851E RADIUS : 3NM

CHANGE : VAR.