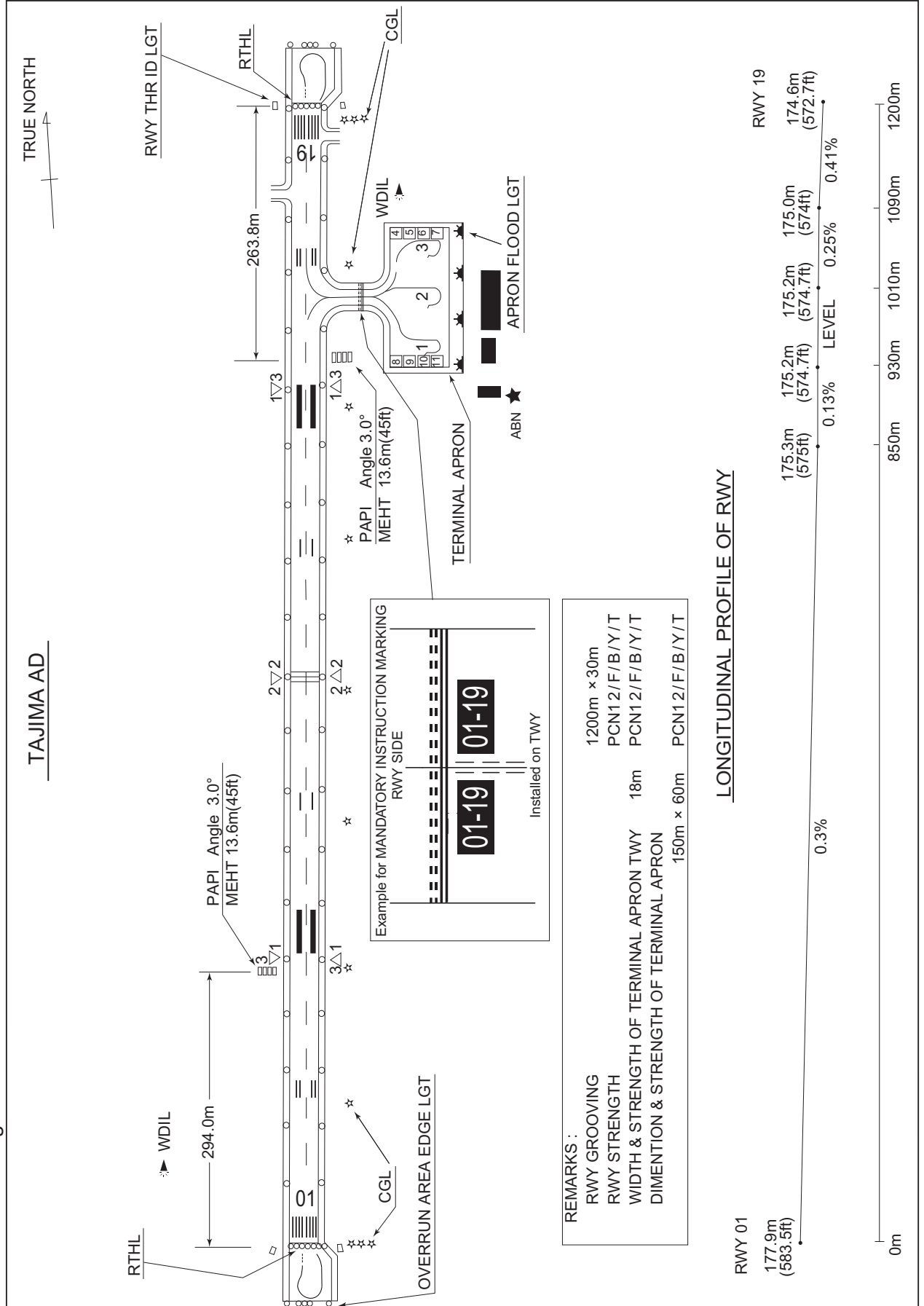


RJBT / TAJIMA

AD CHART

CHANGE : Marking of OVERRUN.



STANDARD DEPARTURE CHART-INSTRUMENT

RJBT / TAJIMA

SID

MIYAZU THREE DEPARTURE

RWY01 : Climb RWY HDG to 1900FT, turn right HDG150°...

RWY19 : Climb RWY HDG to 1900FT, turn left HDG060°...

... to intercept and proceed via YME R285 to YME VOR/DME.

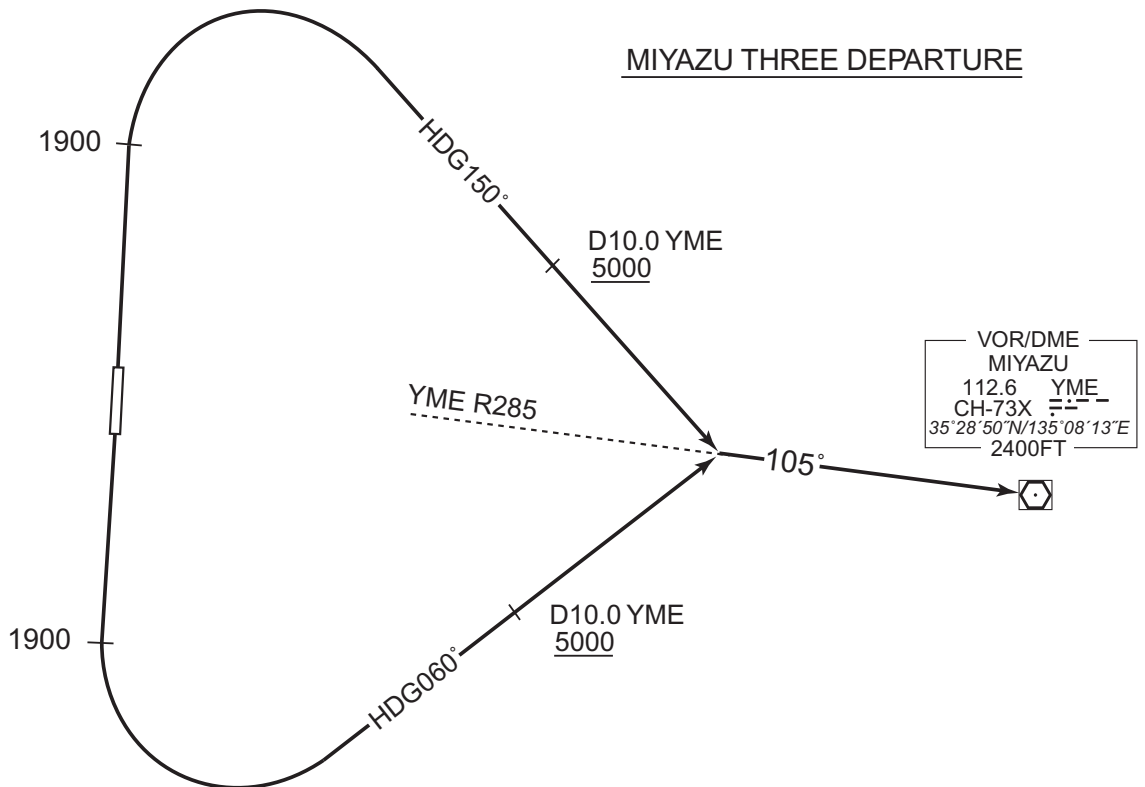
Cross YME 10.0DME at or above 5000FT.

Note RWY01 : 5.0% climb gradient required up to 2200FT.

OBST ALT 1956FT located at 5.6NM 007° FM end of RWY01.

RWY19 : 5.0% climb gradient required up to 3200FT.

OBST ALT 2888FT located at 8.3NM 144° FM end of RWY19.



CHANGE : PROC renamed. TAJIMA VOR/DME(THE) abolished.

STANDARD DEPARTURE CHART-INSTRUMENT

RJBT / TAJIMA

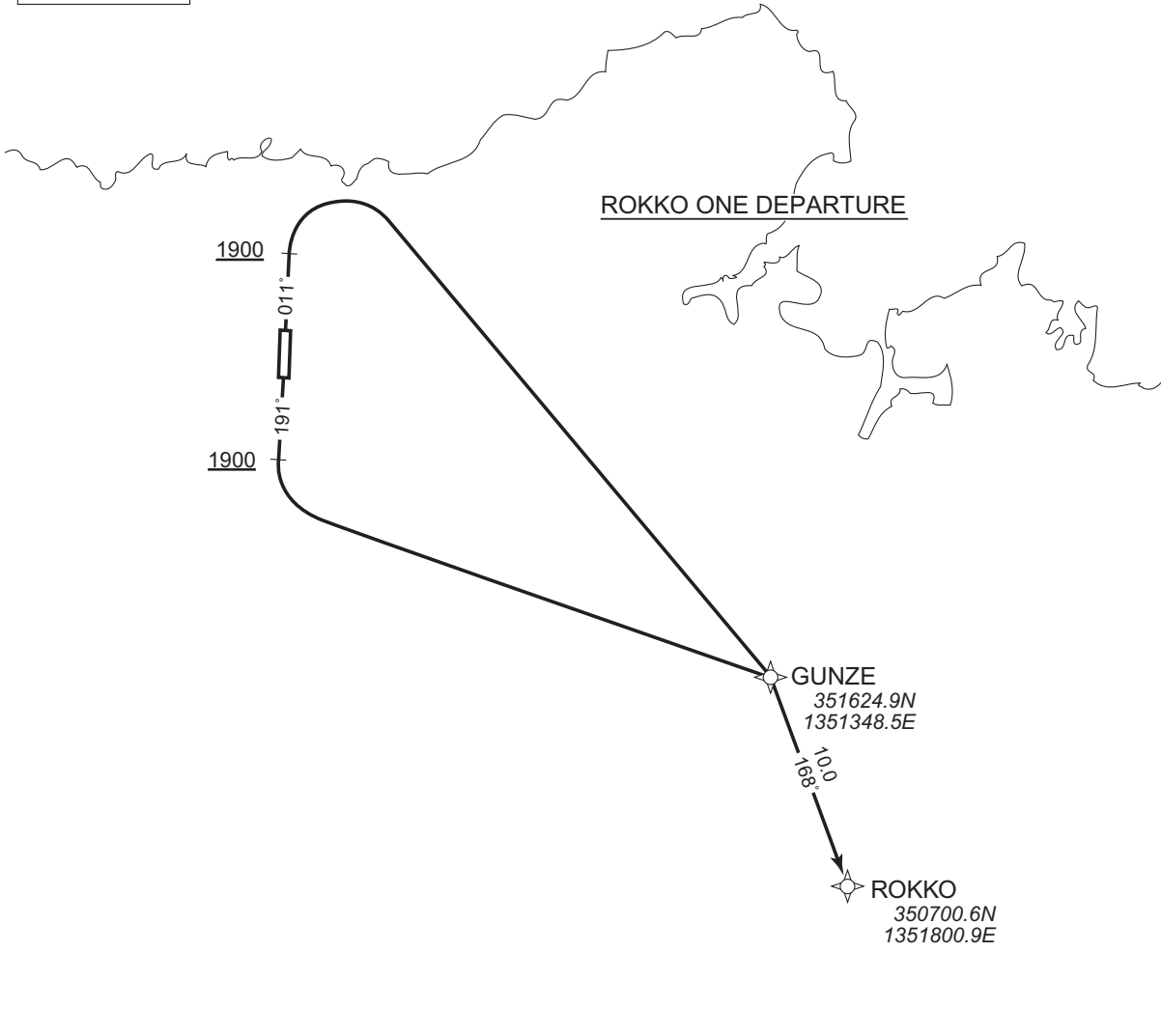
RNAV SID

ROKKO ONE DEPARTURE

RNP1

Note GNSS required.

VAR 8°W (2020)



CHANGE : Navigation Specification(Basic RNP1 → RNP1).

ROKKO ONE DEPARTURE

- RWY01 : Climb on HDG011° at or above 1900FT, turn right direct to GUNZE, to ROKKO.
- RWY19 : Climb on HDG191° at or above 1900FT, turn left direct to GUNZE, to ROKKO.

Note RWY01 : 5.0% climb gradient required up to 2200FT.

OBST ALT 1956FT located at 5.6NM 007° FM end of RWY01.

Note RWY19 : 5.0% climb gradient required up to 3200FT.

OBST ALT 2854FT located at 8.2NM 144° FM end of RWY19.

STANDARD DEPARTURE CHART-INSTRUMENT

RJBT / TAJIMA

RNAV SID

ROKKO ONE DEPARTURE

RWY01

Serial Number	Path Descriptor	Waypoint Identifier	Fly Over	Course °M(°T)	Magnetic Variation	Distance (NM)	Turn Direction	Altitude (FT)	Speed (KIAS)	Vertical Angle	Navigation Specification
001	VA	-	-	011 (003.0)	-8.2	-	-	+1900	-	-	RNP1
002	DF	GUNZE	-	-	-8.2	-	R	-	-	-	RNP1
003	TF	ROKKO	-	168 (159.9)	-8.2	10.0	-	-	-	-	RNP1

RWY19

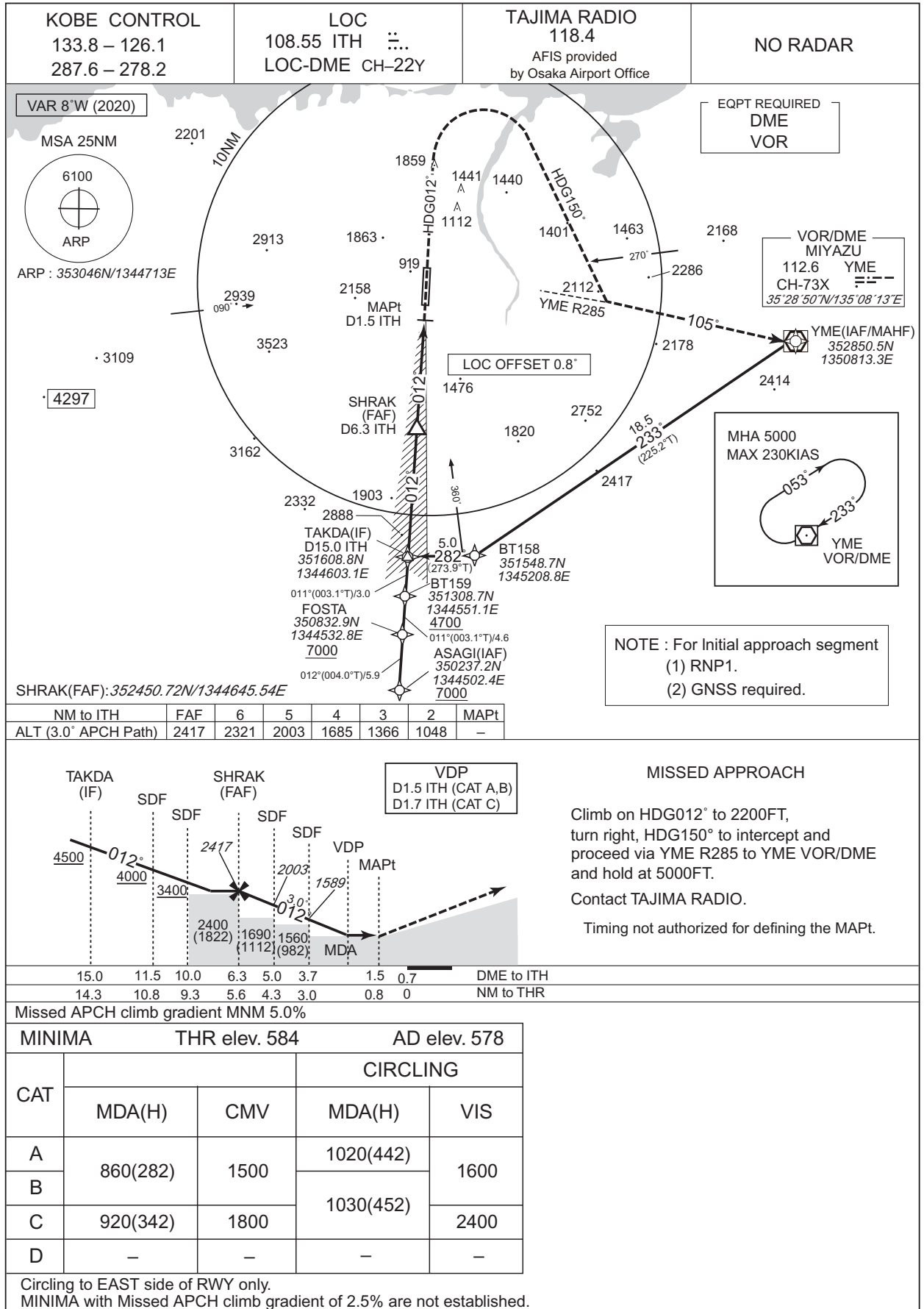
Serial Number	Path Descriptor	Waypoint Identifier	Fly Over	Course °M(°T)	Magnetic Variation	Distance (NM)	Turn Direction	Altitude (FT)	Speed (KIAS)	Vertical Angle	Navigation Specification
001	VA	-	-	191 (183.0)	-8.2	-	-	+1900	-	-	RNP1
002	DF	GUNZE	-	-	-8.2	-	L	-	-	-	RNP1
003	TF	ROKKO	-	168 (159.9)	-8.2	10.0	-	-	-	-	RNP1

CHANGE : Navigation Specification(Basic RNP1 → RNP1).

INSTRUMENT APPROACH CHART

RJBT / TAJIMA

LOC RWY01

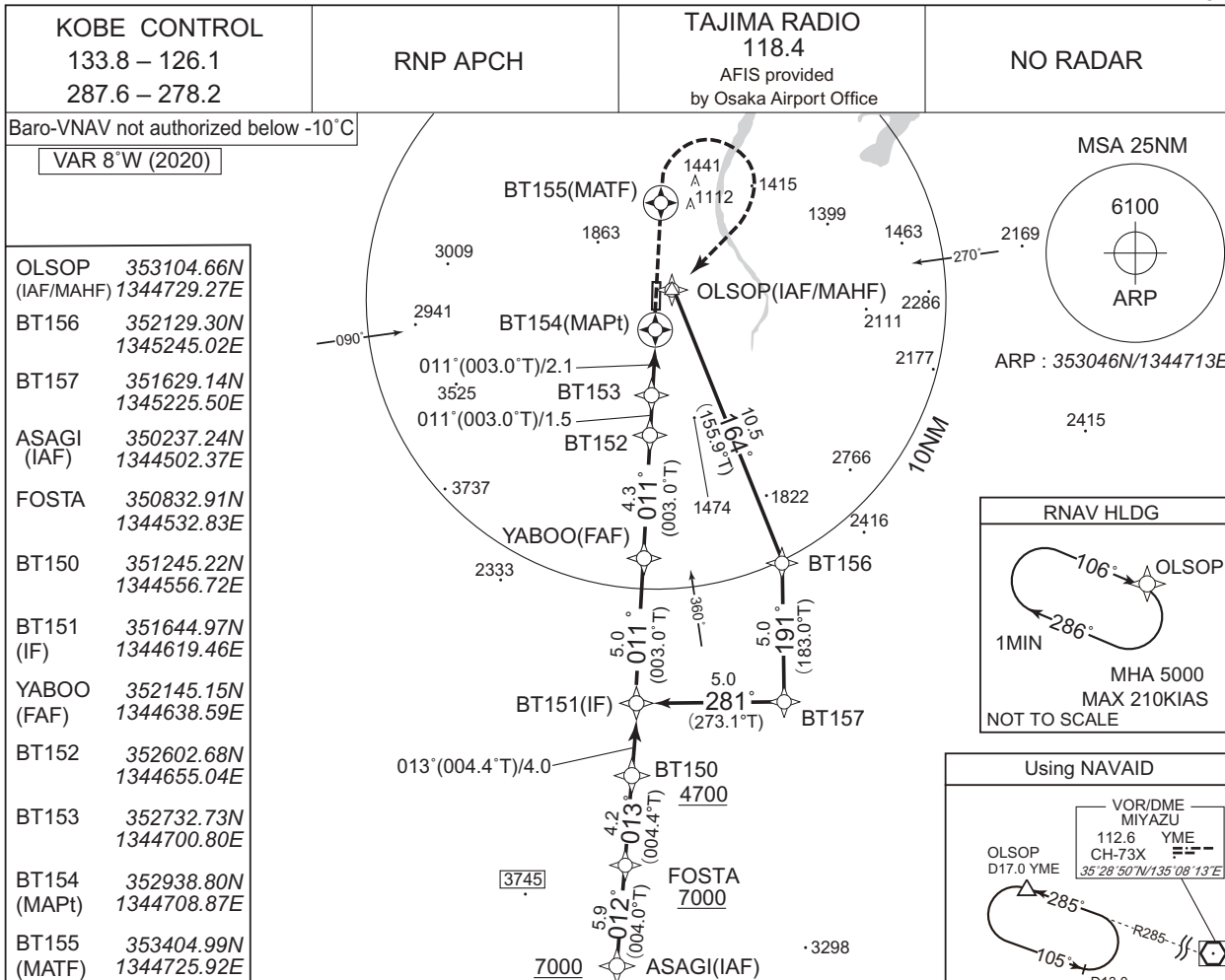


CHANGE : FREQ for KOBE CONTROL.

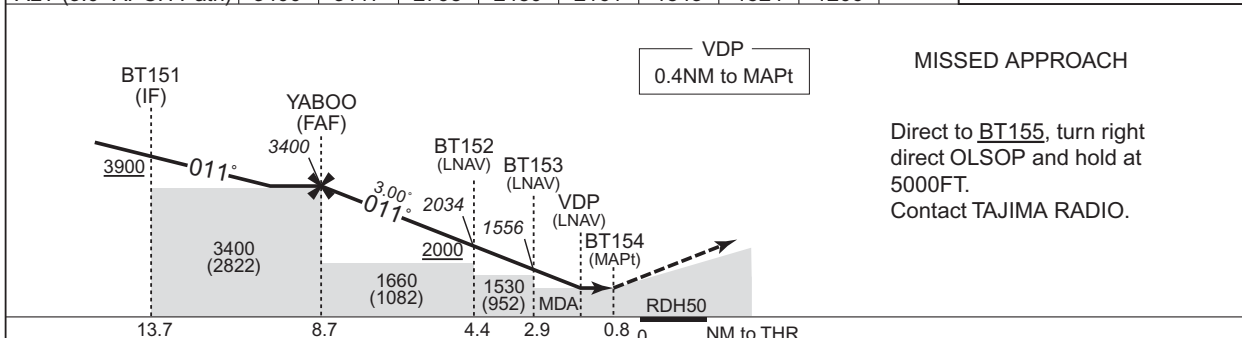
INSTRUMENT APPROACH CHART

RJBT / TAJIMA

RNP RWY01



NM to Next Fix	FAF	7	6	5	4	3	2	1	MAPt	MHA 5000
ALT (3.0° APCH Path)	3400	3117	2798	2480	2161	1843	1524	1206	—	MAX 170KIAS



Missed APCH climb gradient MNM 5.0%

MINIMA		THR elev. 584		AD elev. 578		
CAT	LNAV/VNAV		LNAV		CIRCLING	
	DA(H)	CMV	MDA(H)	CMV	MDA(H)	VIS
A	990 (406)	1500	990 (412)	1500	1020 (442)	1600
B					1030 (452)	
C	—	—	—	—	—	—
D	—	—	—	—	—	—

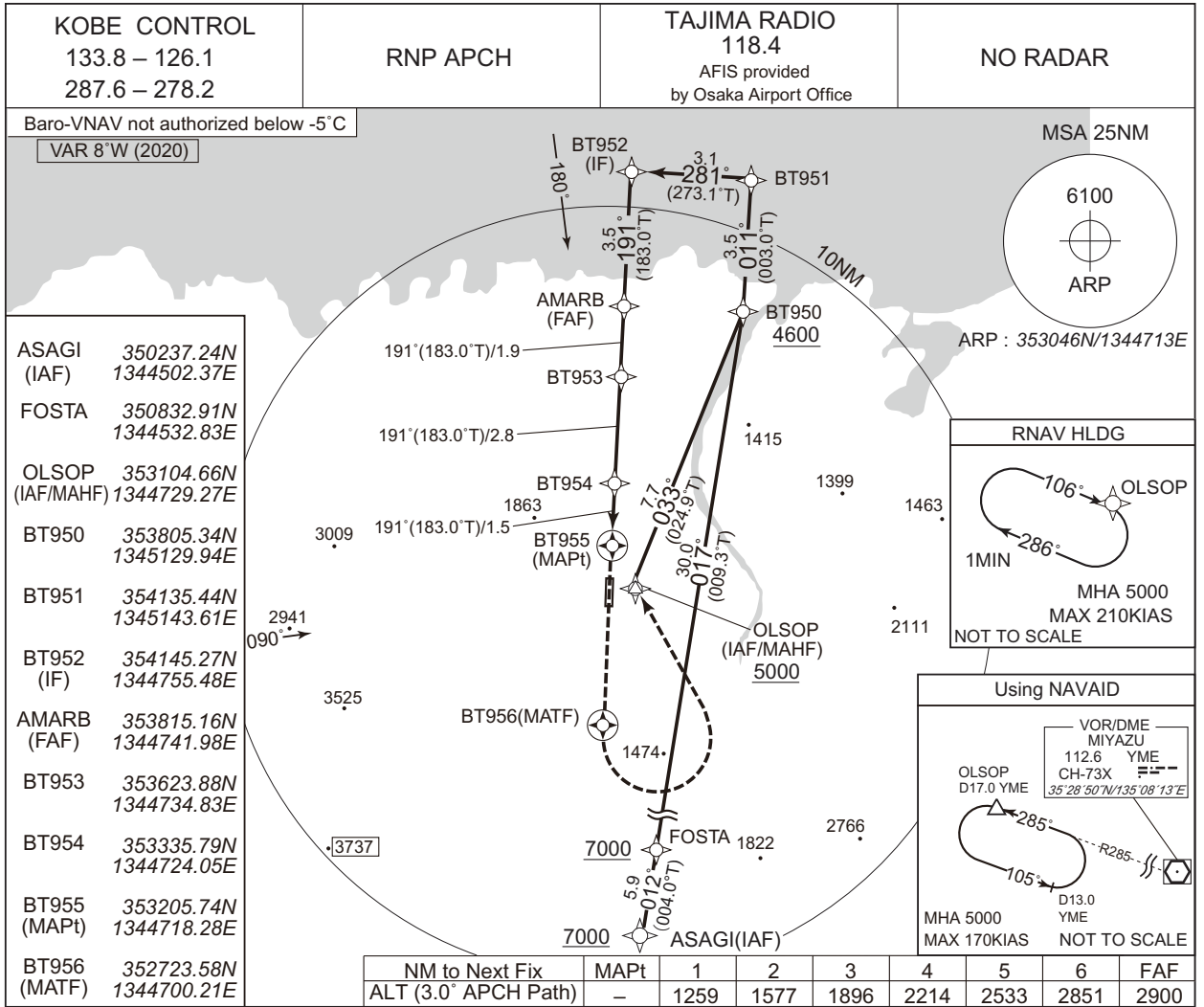
MINIMA with Missed APCH climb gradient of 2.5% are not established. Circling to EAST side of RWY only.

CHANGE : FREQ for KOBE CONTROL.

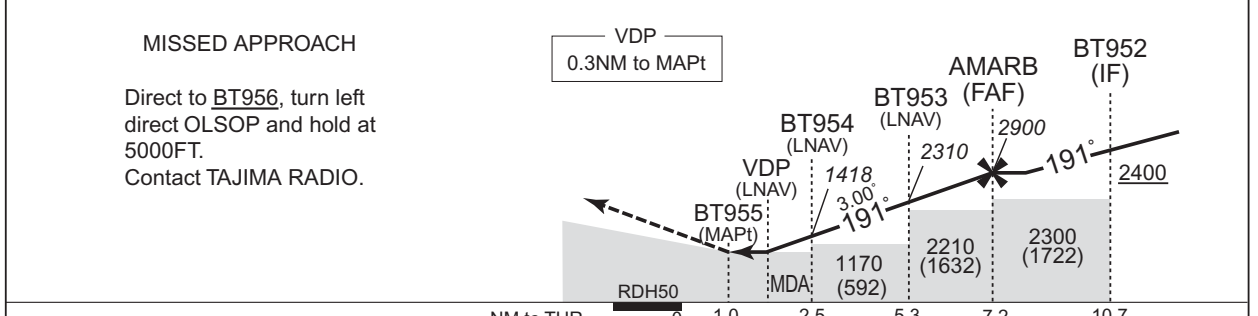
INSTRUMENT APPROACH CHART

RJBT / TAJIMA

RNP RWY19



CHANGE : FREQ for KOBE CONTROL.



Missed APCH climb gradient MNM 5.0%

MINIMA		THR elev. 573		AD elev. 578		
CAT	LNAV/VNAV		LNAV		CIRCLING	
	DA(H)	CMV	MDA(H)	CMV	MDA(H)	VIS
A	1000 (427)	1500	1000 (422)	1500	1020 (442)	1600
B					1030 (452)	
C	-	-	-	-	-	-
D	-	-	-	-	-	-

MINIMA with Missed APCH climb gradient of 2.5% are not established.
Circling to EAST side of RWY only.

INTENTIONALLY LEFT BLANK

RJBT / TAJIMA

Visual REP

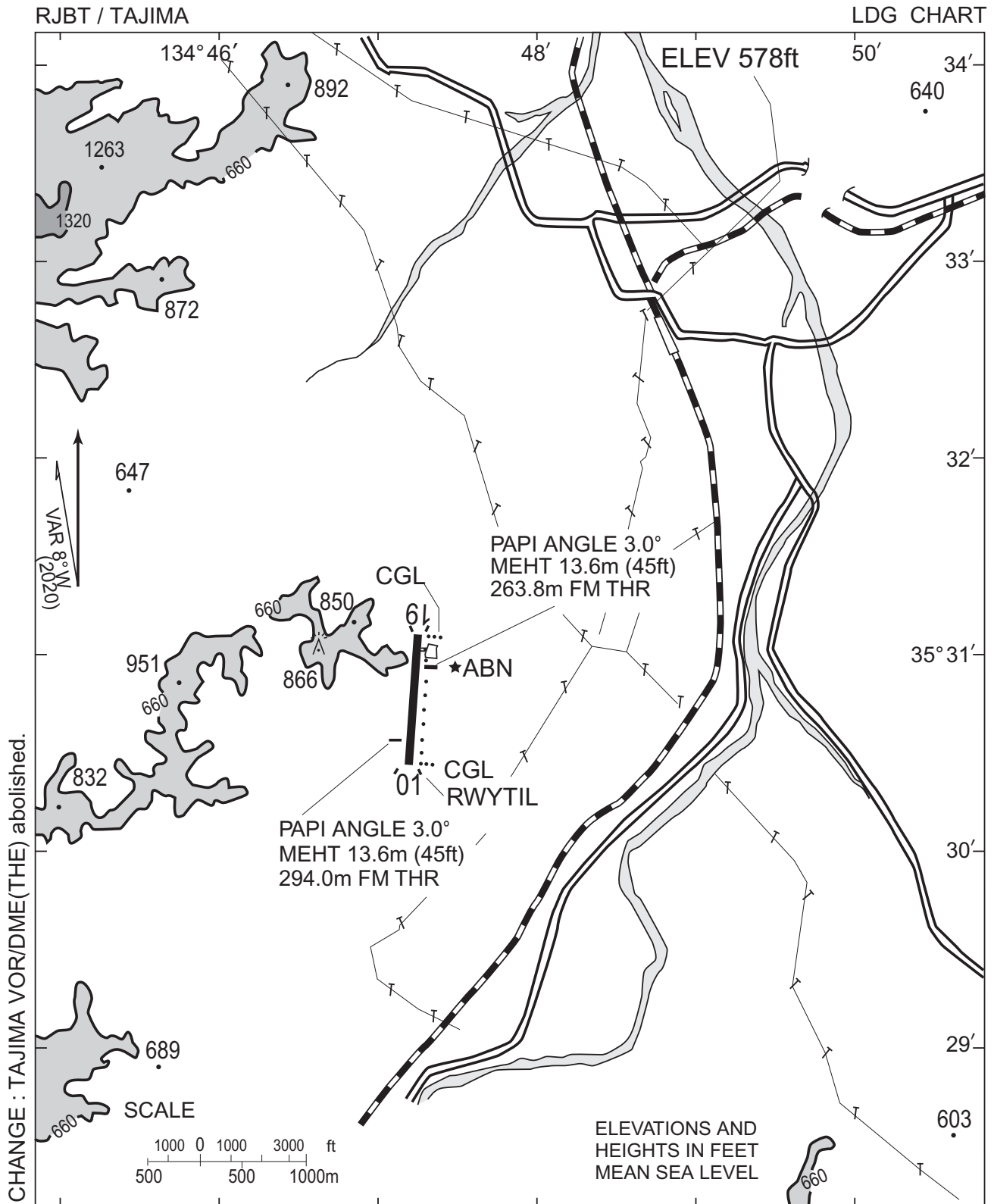


CHANGE: Map updated. BRG/DIST from ARP. Remarks(Kinosaki).

※図中に標高を示す数字がある場合、単位はメートル(m)である。The unit of measurement used to express elevation is meter(m).

※TAJIMA FLIGHT SERVICE : 130.8MHz

Call sign	BRG / DIST from ARP	Remarks
城崎 Kinosaki	011°T / 6.8NM	JR城崎温泉駅 Station
神鍋山 Kannabeyama	266°T / 5.5NM	山 Mountain
出石 Izushi	125°T / 5.1NM	出石市街 Town
八鹿 Yoka	183°T / 5.9NM	JR八鹿駅 Station



RJBT / TAJIMA

Minimum Vectoring Altitude CHART

