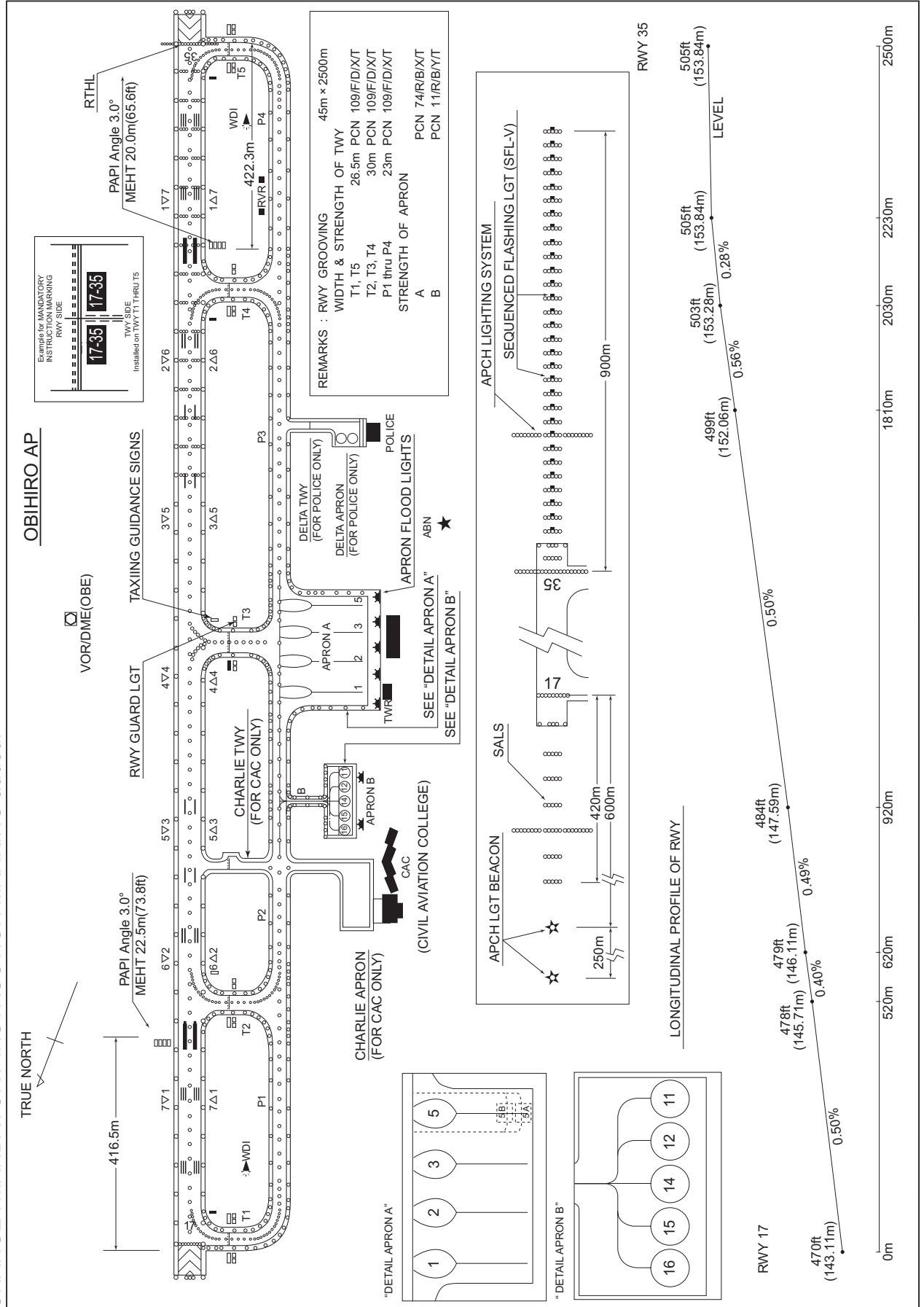


RJCB / OBIHIRO

AD CHART

CHANGE : MANDATORY INSTRUCTION MARKING added.



STANDARD DEPARTURE CHART-INSTRUMENT

RJCB / OBIHIRO

SID

NODUK TWO DEPARTURE

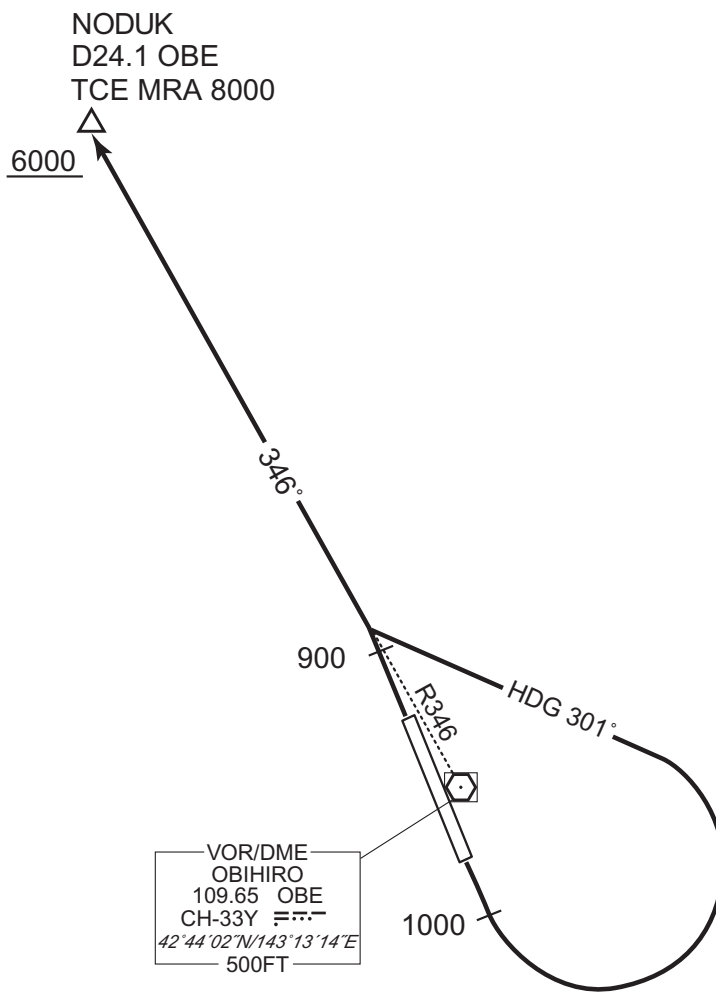
RWY 17 : Climb RWY HDG to 1000FT, turn left HDG 301° to intercept and proceed...

RWY 35 : Climb RWY HDG to 900FT, ...

...via OBE R346 to NODUK.

Cross NODUK at or above 6000FT.

Note RWY 35 : 5.0% climb gradient required up to 1500FT.



CHANGE : PROC renamed. PROC course.

STANDARD DEPARTURE CHART-INSTRUMENT

RJCB / OBIHIRO

SID

KUSHIRO SIX DEPARTURE

RWY 17 : Climb RWY HDG to 1000FT, turn left HDG 031° to intercept and proceed...

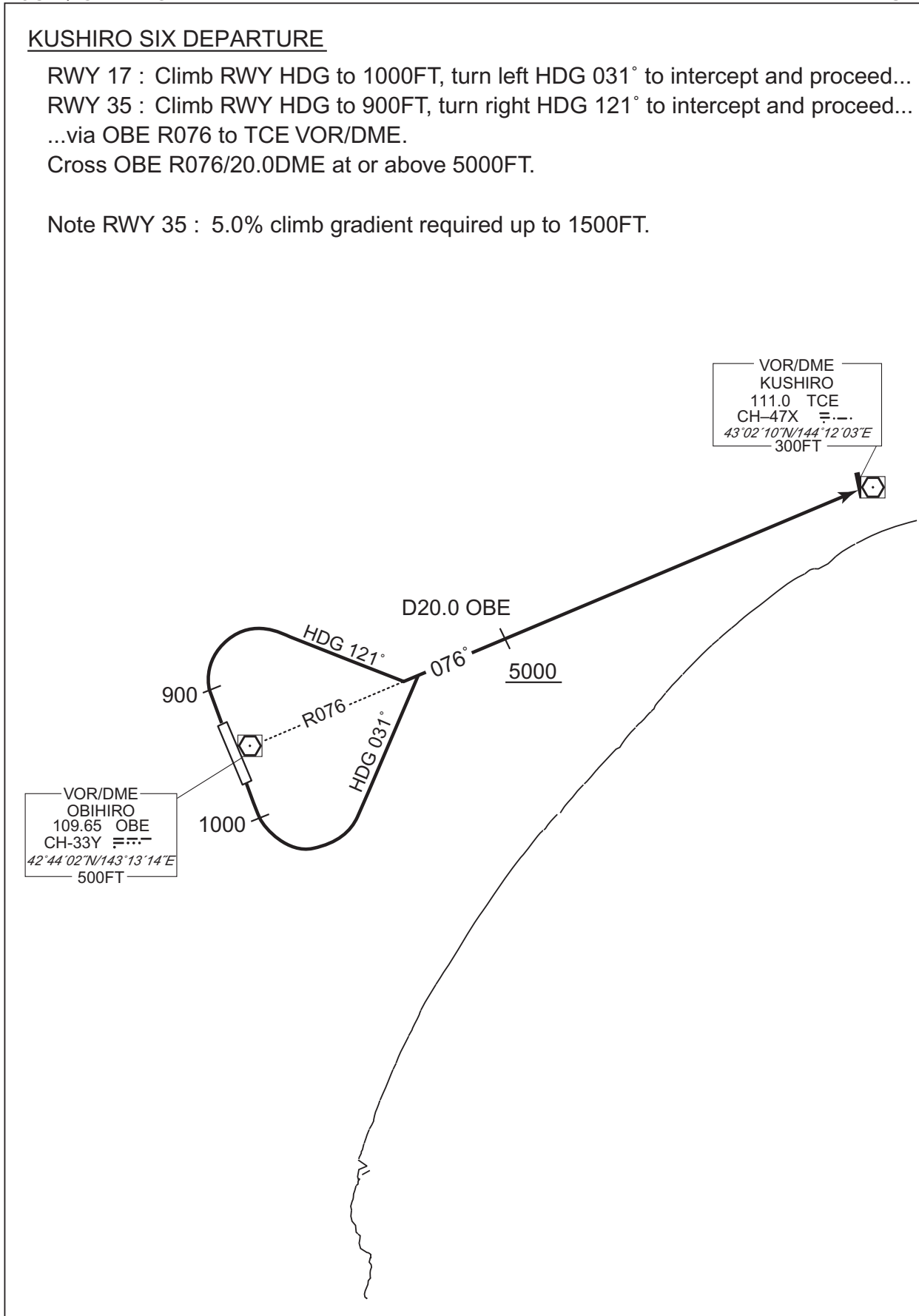
RWY 35 : Climb RWY HDG to 900FT, turn right HDG 121° to intercept and proceed...

...via OBE R076 to TCE VOR/DME.

Cross OBE R076/20.0DME at or above 5000FT.

Note RWY 35 : 5.0% climb gradient required up to 1500FT.

CHANGE : PROC renamed. PROC course.



STANDARD DEPARTURE CHART-INSTRUMENT

RJCB / OBIHIRO

SID

RUGMO TWO DEPARTURE

RWY 17 : Climb RWY HDG to 1000FT, turn left HDG 355° to intercept and proceed...

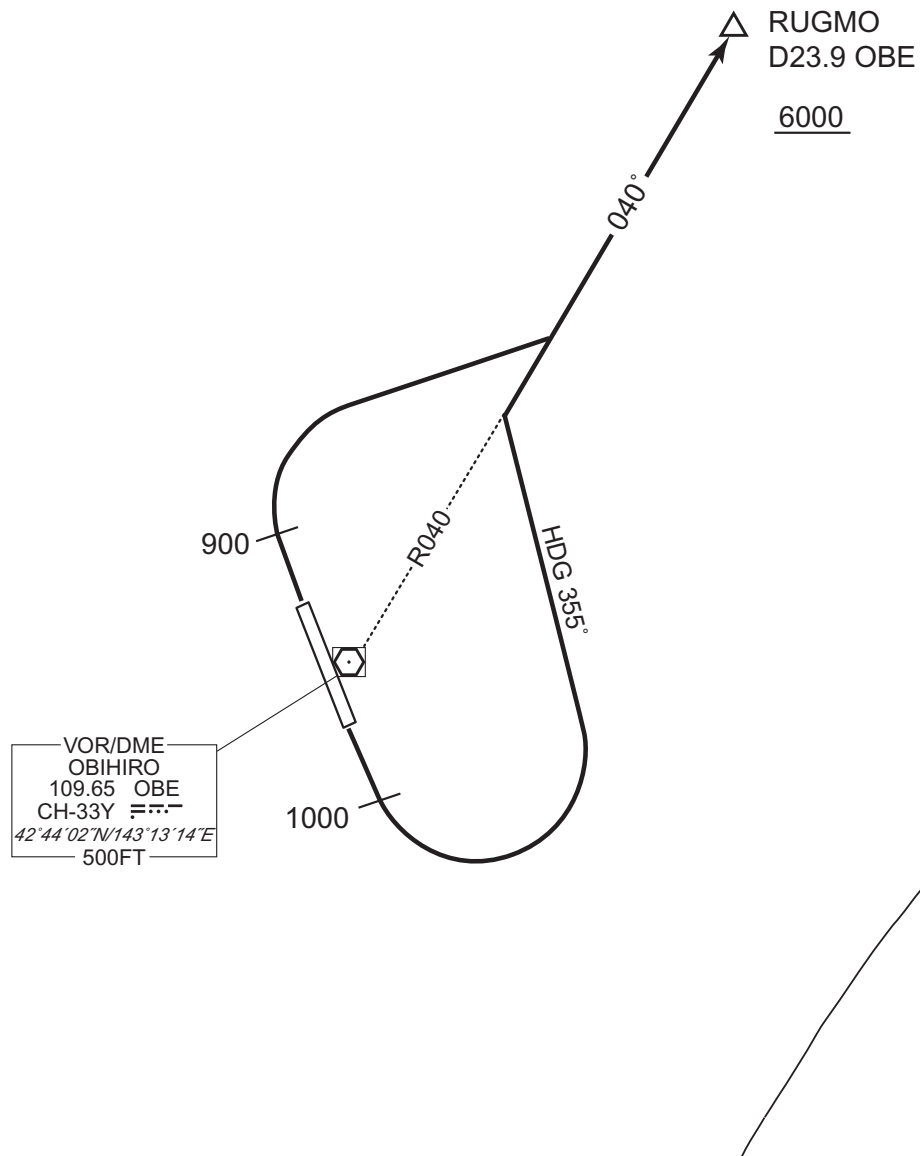
RWY 35 : Climb RWY HDG to 900FT, turn right,...

...via OBE R040 to RUGMO.

Cross RUGMO at or above 6000FT.

Note RWY 35 : 5.0% climb gradient required up to 1500FT.

CHANGE : PROC renamed. PROC course.



STANDARD DEPARTURE CHART-INSTRUMENT

RJCB / OBIHIRO

SID

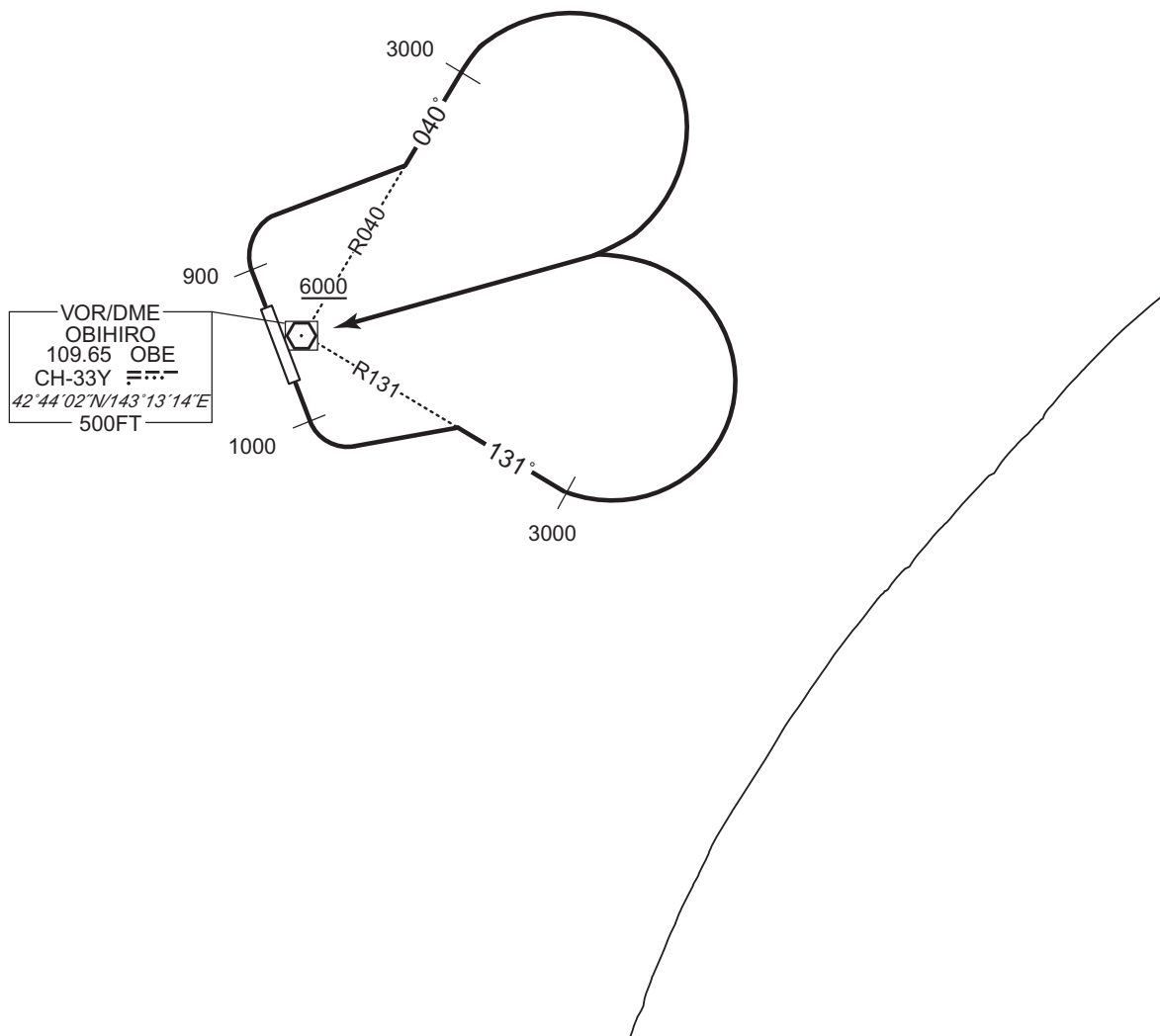
OBIHIRO REVERSAL EIGHT DEPARTURE

RWY 17 : Climb RWY HDG to 1000FT, turn left, via OBE R131 to 3000FT, turn left,...

RWY 35 : Climb RWY HDG to 900FT, turn right, via OBE R040 to 3000FT, turn right, ...direct to OBE VOR/DME.

Cross OBE VOR/DME at or above 6000FT.

Note RWY 35 : 5.0% climb gradient required up to 1500FT.



CHANGE : PROC renamed. PROC course.

STANDARD DEPARTURE CHART-INSTRUMENT

RJCB / OBIHIRO

SID

RACKO THREE DEPARTURE

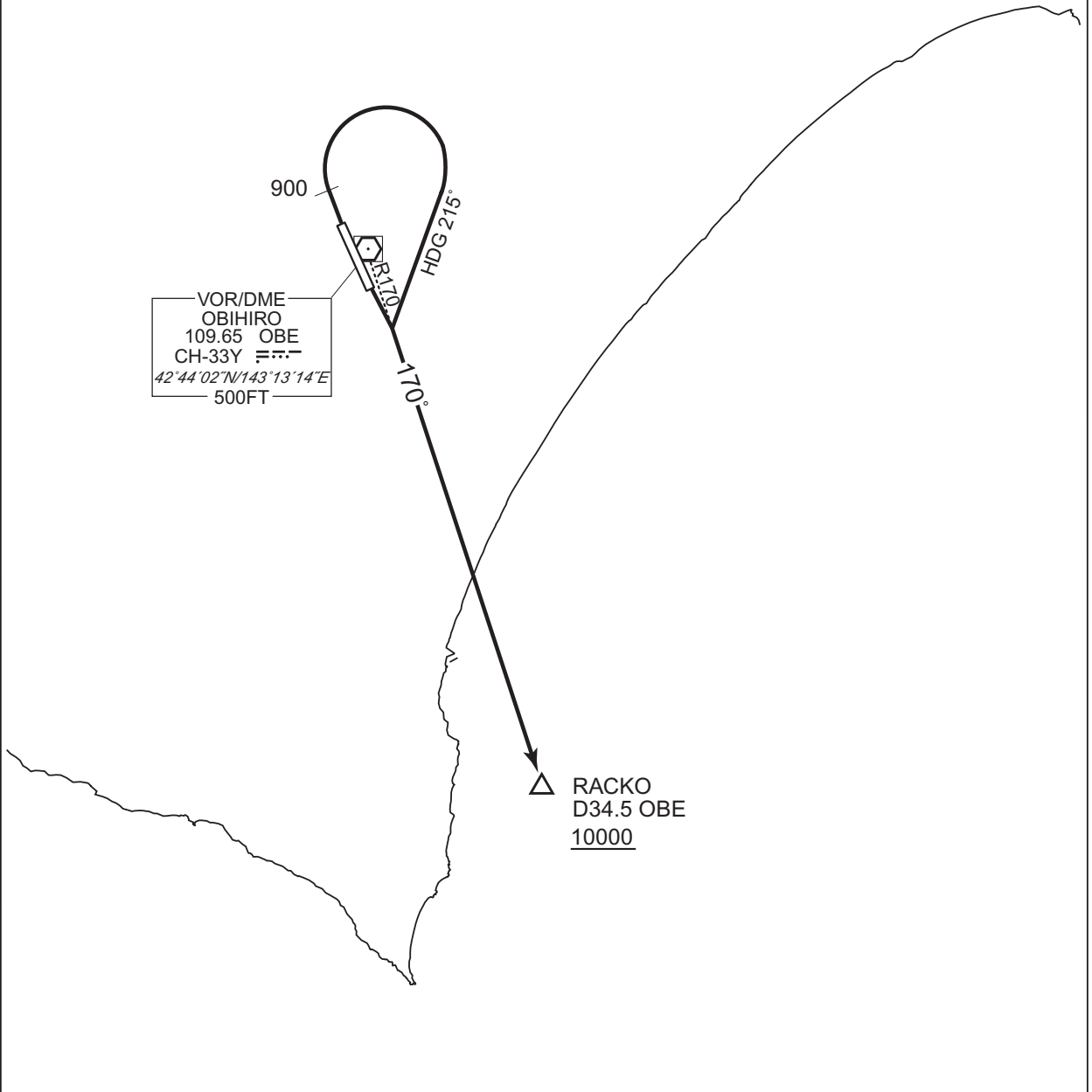
RWY 17 : Climb...

RWY 35 : Climb RWY HDG to 900FT, turn right HDG 215° to intercept and proceed...
...via OBE R170 to RACKO.

Cross RACKO at or above 10000FT.

Note RWY 35 : 5.0% climb gradient required up to 1500FT.

CHANGE : PROC renamed. PROC course.



STANDARD DEPARTURE CHART-INSTRUMENT

RJCB / OBIHIRO

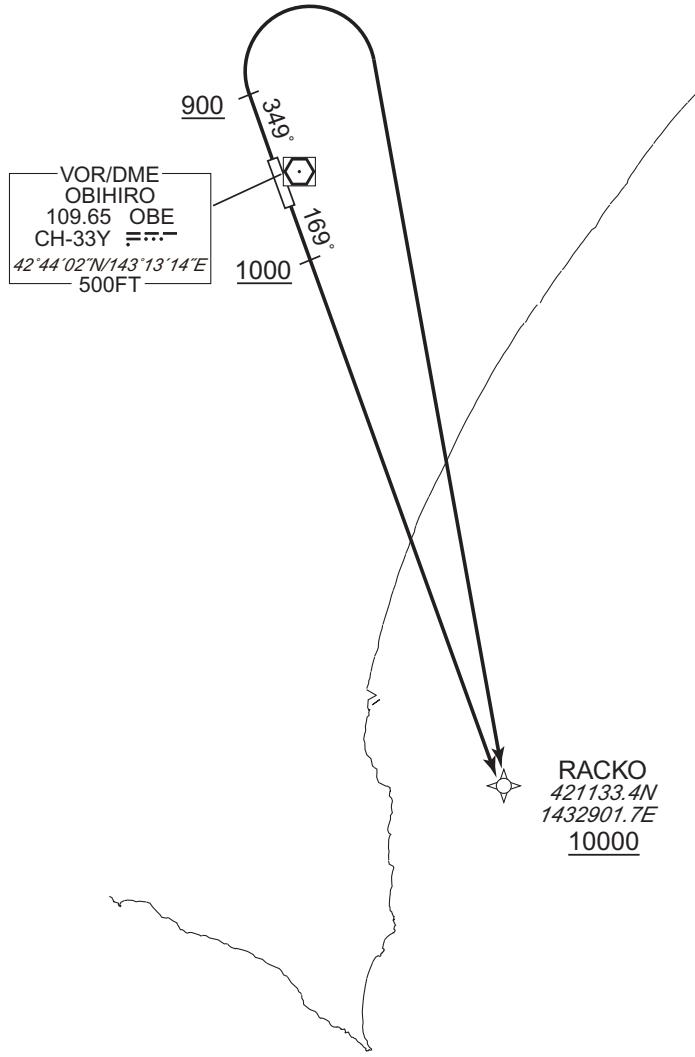
RNAV SID

OTTER TWO DEPARTURE

RNP1

Note GNSS required.

VAR 9°W



CHANGE : Navigation Specification(Basic RNP1 → RNP1).

RWY17 : Climb on HDG169° at or above 1000FT, direct to RACKO at or above 10000FT.
RWY35 : Climb on HDG349° at or above 1000FT, turn right direct to RACKO at or above 10000FT.

NOTE RWY35 : 5.0% climb gradient required up to 1500FT.

STANDARD DEPARTURE CHART-INSTRUMENT

RJCB / OBIHIRO

RNAV SID

OTTER TWO DEPARTURE

RWY17

Serial Number	Path Descriptor	Waypoint Identifier	Fly Over	Course °M(°T)	Magnetic Variation	Distance (NM)	Turn Direction	Altitude (FT)	Speed (KIAS)	Vertical Angle	Navigation Specification
001	VA	-	-	169 (159.4)	-9.4	-	-	+1000	-	-	RNP1
002	DF	RACKO	-	-	-9.4	-	-	+10000	-	-	RNP1

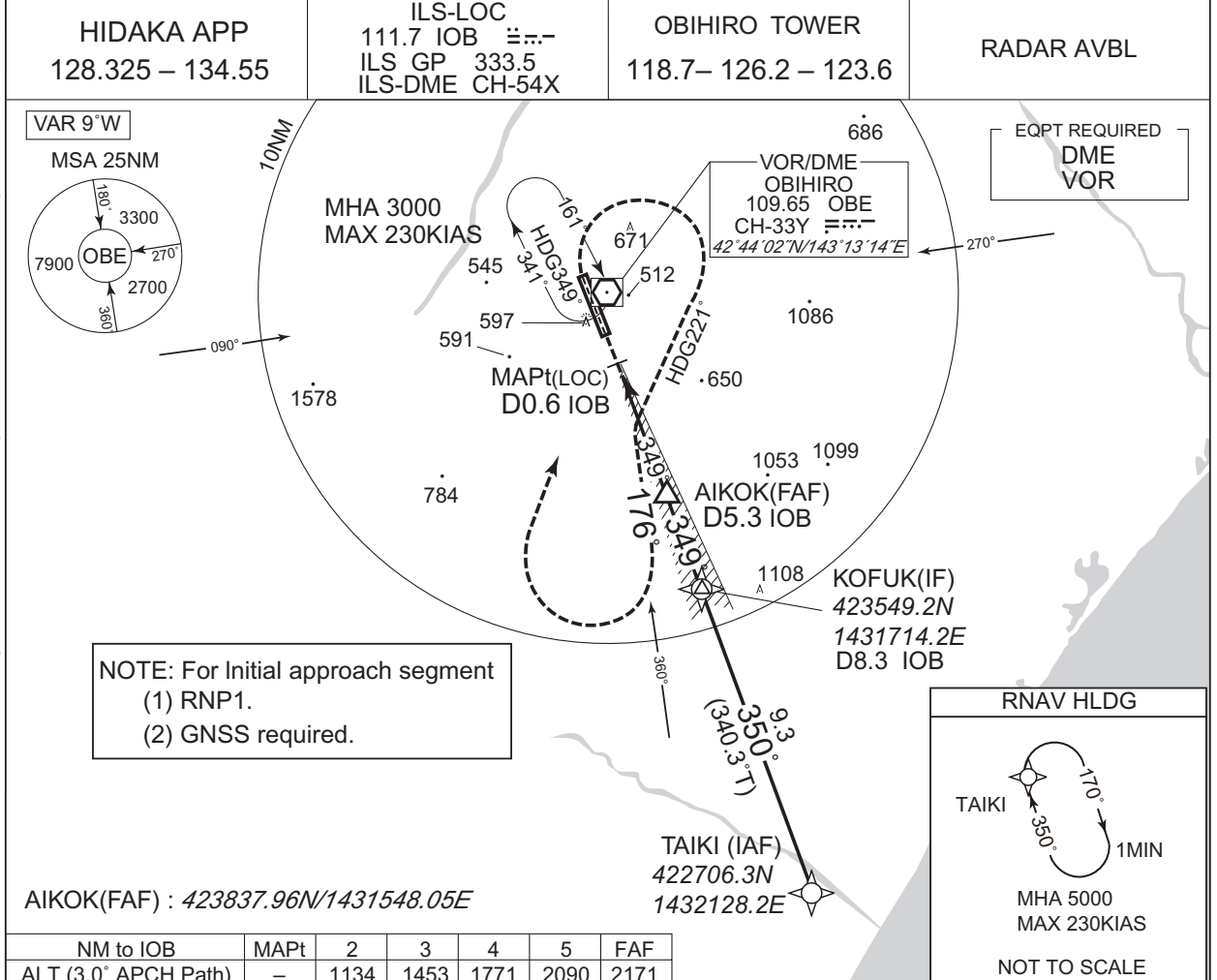
RWY35

Serial Number	Path Descriptor	Waypoint Identifier	Fly Over	Course °M(°T)	Magnetic Variation	Distance (NM)	Turn Direction	Altitude (FT)	Speed (KIAS)	Vertical Angle	Navigation Specification
001	VA	-	-	349 (339.4)	-9.4	-	-	+900	-	-	RNP1
002	DF	RACKO	-	-	-9.4	-	R	+10000	-	-	RNP1

CHANGE : Navigation Specification(Basic RNP1 → RNP1).

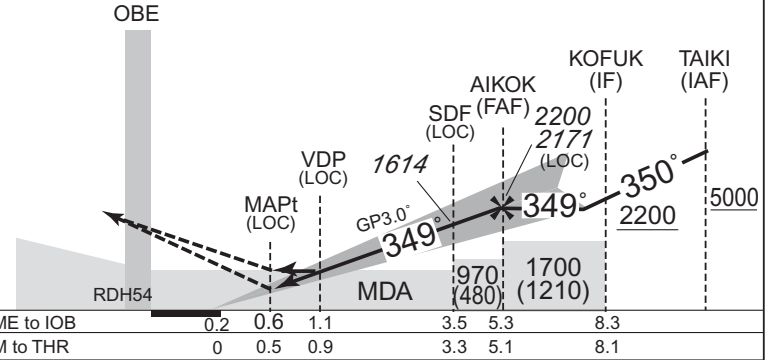
INSTRUMENT APPROACH CHART

RJCB / OBIHIRO ILS Z or LOC Z RWY35



MISSED APPROACH
Climb to 900FT on HDG 349°, turn right HDG 221° to intercept and proceed via OBE R176 to 3000FT, turn right, direct to OBE VOR/DME and hold.
Contact HIDAKA APP.

No turn before IOB 0.6DME.
Timing not authorized for defining the MAPt.



Missed APCH climb gradient MNM 4.0%

MINIMA		THR elev. 505		AD elev. 490		
CAT	CAT I		LOC		CIRCLING	
	DA(H)	RVR/CMV	MDA(H)	RVR/CMV	MDA(H)	VIS
A	705 (200)	550	840 (350)	900	960 (470)	1600
B				1000		
C				1050 (560)	3200	
D						

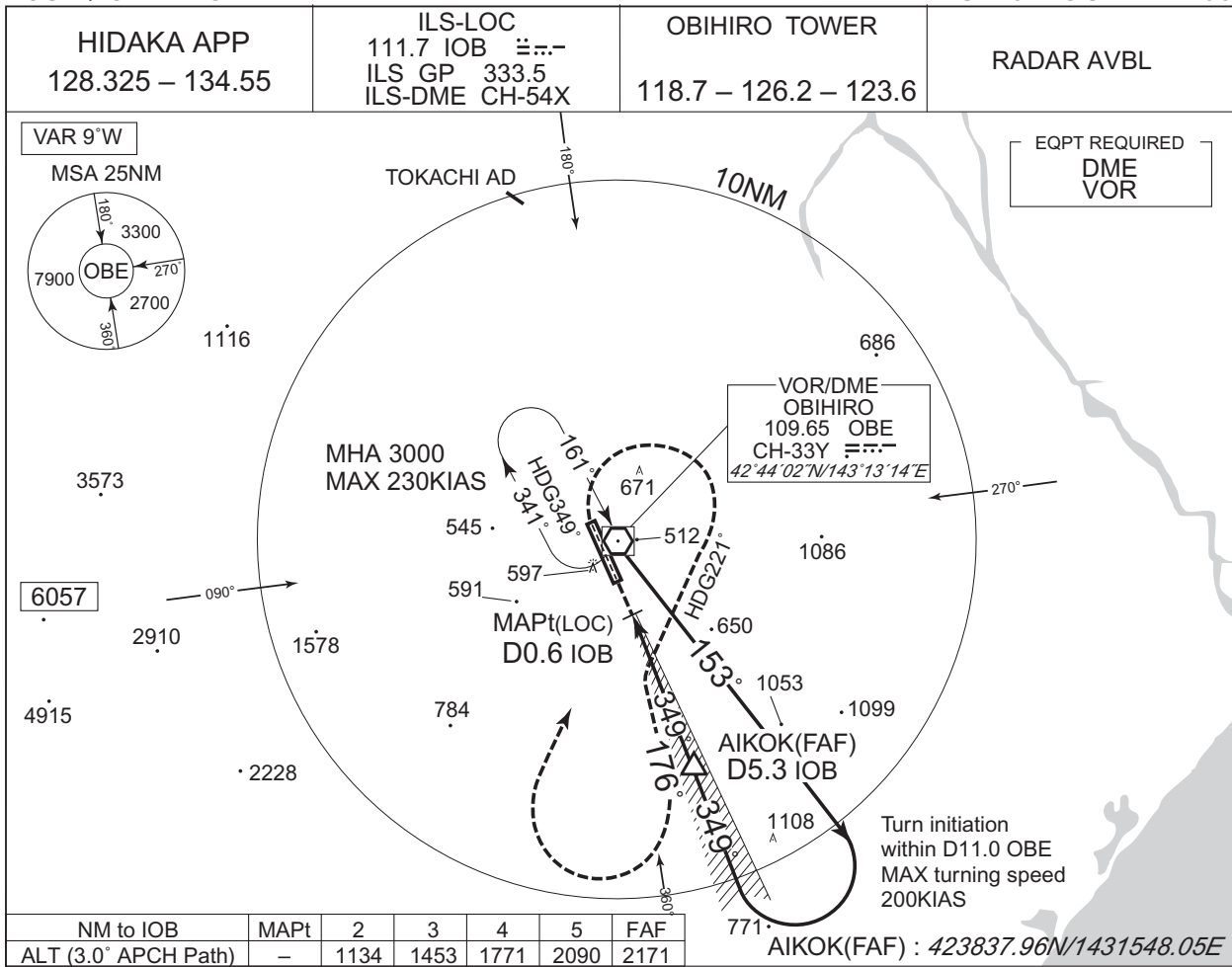
MINIMA with Missed APCH climb gradient of 2.5% are not established.

CHANGE : ATC call sign and FREQ. Description of RADAR Service. Missed APCH PROC. Navigation Specification(Basic RNP1 → RNP1).

INSTRUMENT APPROACH CHART

RJCB / OBIHIRO

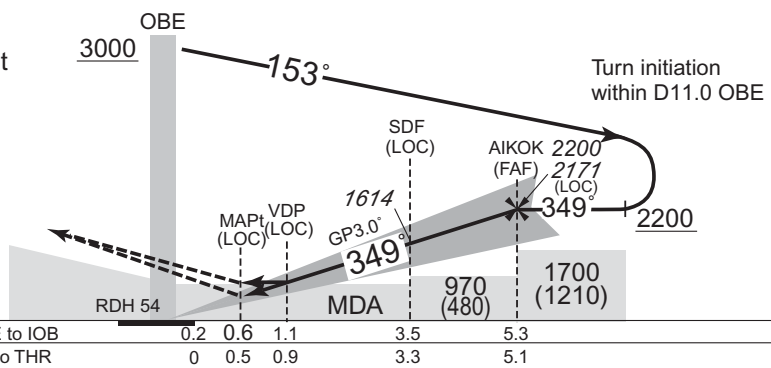
ILS Y or LOC Y RWY35



CHANGE : ATC call sign and FREQ. Description of RADAR Service. Missed APCH PROC.

MISSED APPROACH
Climb to 900FT on HDG 349°, turn right HDG 221° to intercept and proceed via OBE R176 to 3000FT, turn right, direct to OBE VOR/DME and hold.
Contact HIDAKA APP.

No turn before IOB 0.6DME.
Timing not authorized for defining the MAPt.



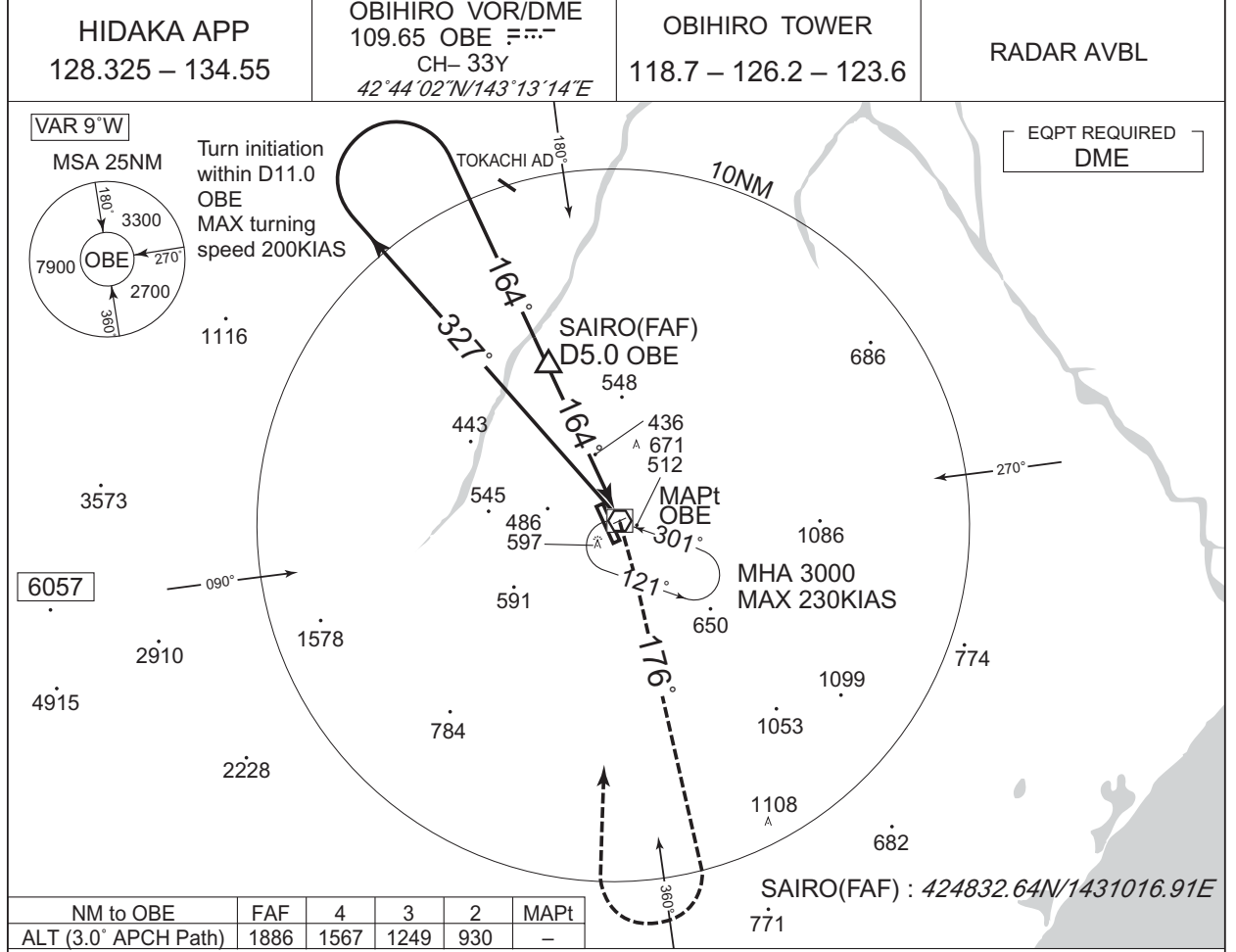
Missed APCH climb gradient MNM 4.0%

MINIMA		THR elev. 505		AD elev. 490		
CAT	CAT I		LOC		CIRCLING	
	DA(H)	RVR/CMV	MDA(H)	RVR/CMV	MDA(H)	VIS
A	705 (200)	550	840 (350)	900	960 (470)	1600
B				1000		
C				1050 (560)	2400	
D				1400	3200	

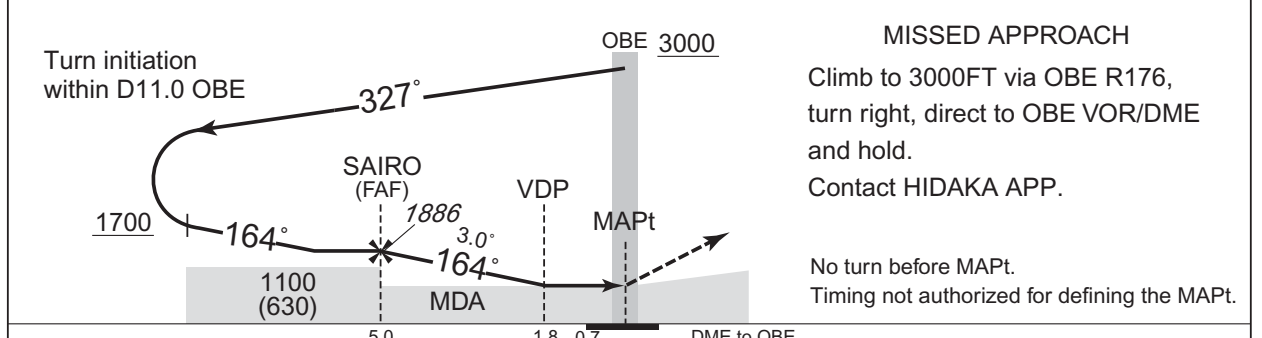
MINIMA with Missed APCH climb gradient of 2.5% are not established.

INSTRUMENT APPROACH CHART

RJCB / OBIHIRO VOR RWY17



CHANGE : ATC call sign and FREQ. Description of RADAR Service. Missed APCH PROC.



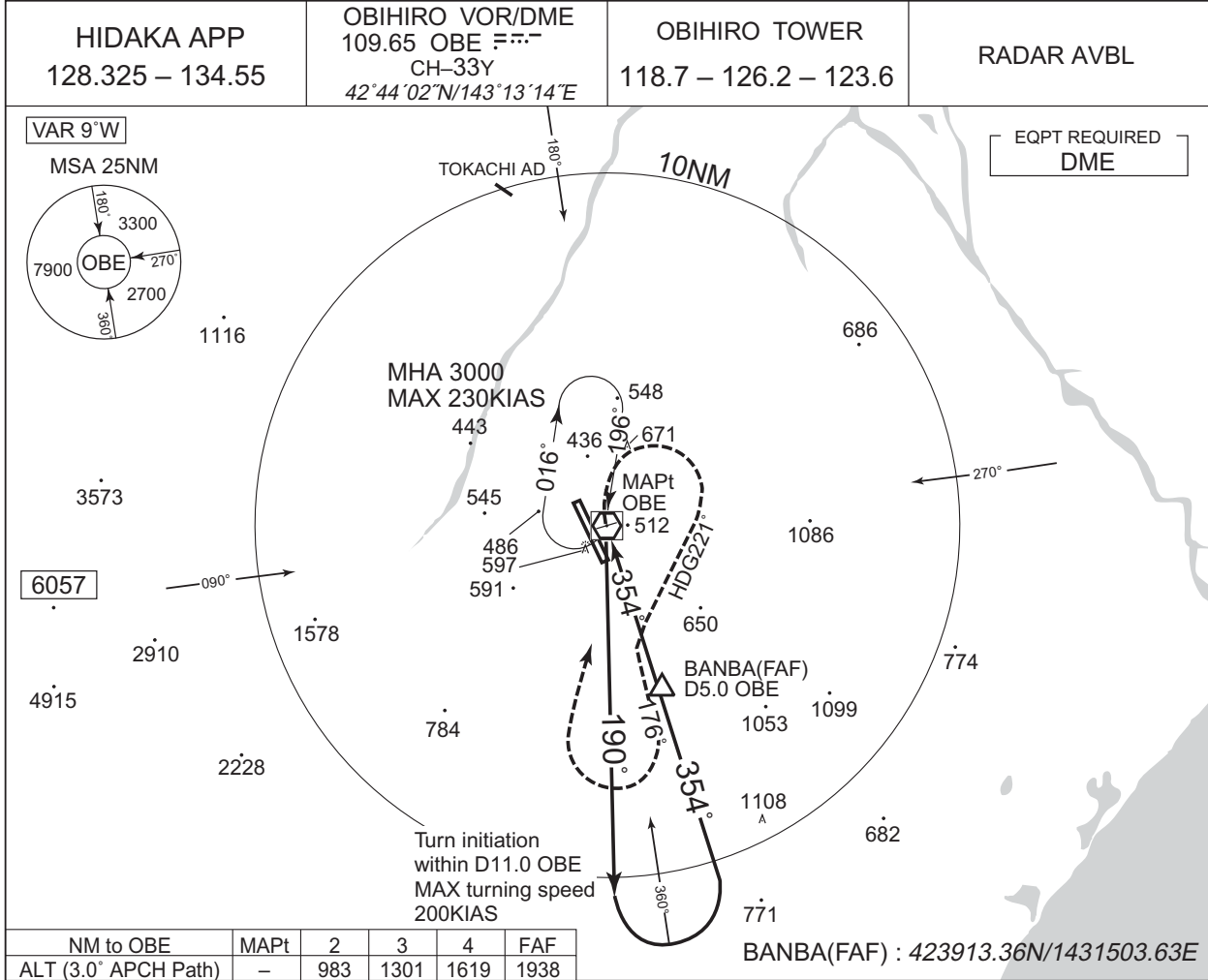
	5.0	1.8	0.7	DME to OBE
	4.3	1.1	0	NM to THR

MINIMA		THR elev. 470		AD elev. 490	
CAT	MDA(H)		CIRCLING		
	MDA(H)	CMV	MDA(H)	VIS	
A	860 (390)	1200	960 (470)	1600	
B		1300			
C		1400	1050 (560)	2400	
D		1600			

INSTRUMENT APPROACH CHART

RJCB / OBIHIRO

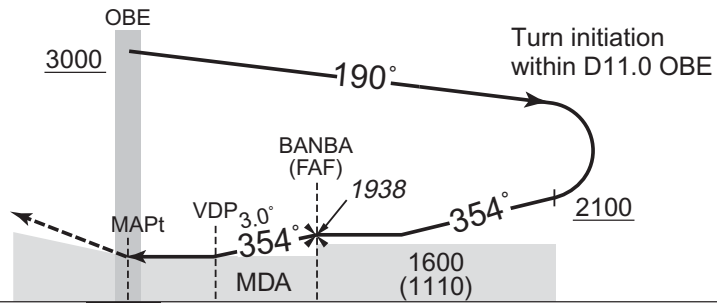
VOR RWY35



CHANGE : ATC call sign and FREQ. Description of RADAR Service. Missed APCH PROC.

MISSED APPROACH
Turn right, climb on HDG 221° to intercept and proceed via OBE R176 to 3000FT, turn right, direct to OBE VOR/DME and hold. Contact HIDAKA APP.

No turn before MAPt.
Timing not authorized for defining the MAPt.



DME to OBE	0.7	1.9	5.0
NM to THR	0	1.2	4.3

MINIMA		THR elev. 505	AD elev. 490
CAT			CIRCLING
	MDA(H)	RVR/CMV	MDA(H) VIS
A	930 (440)	900	960 (470) 1600
B		1000	2400
C		1050 (560)	
D			1400

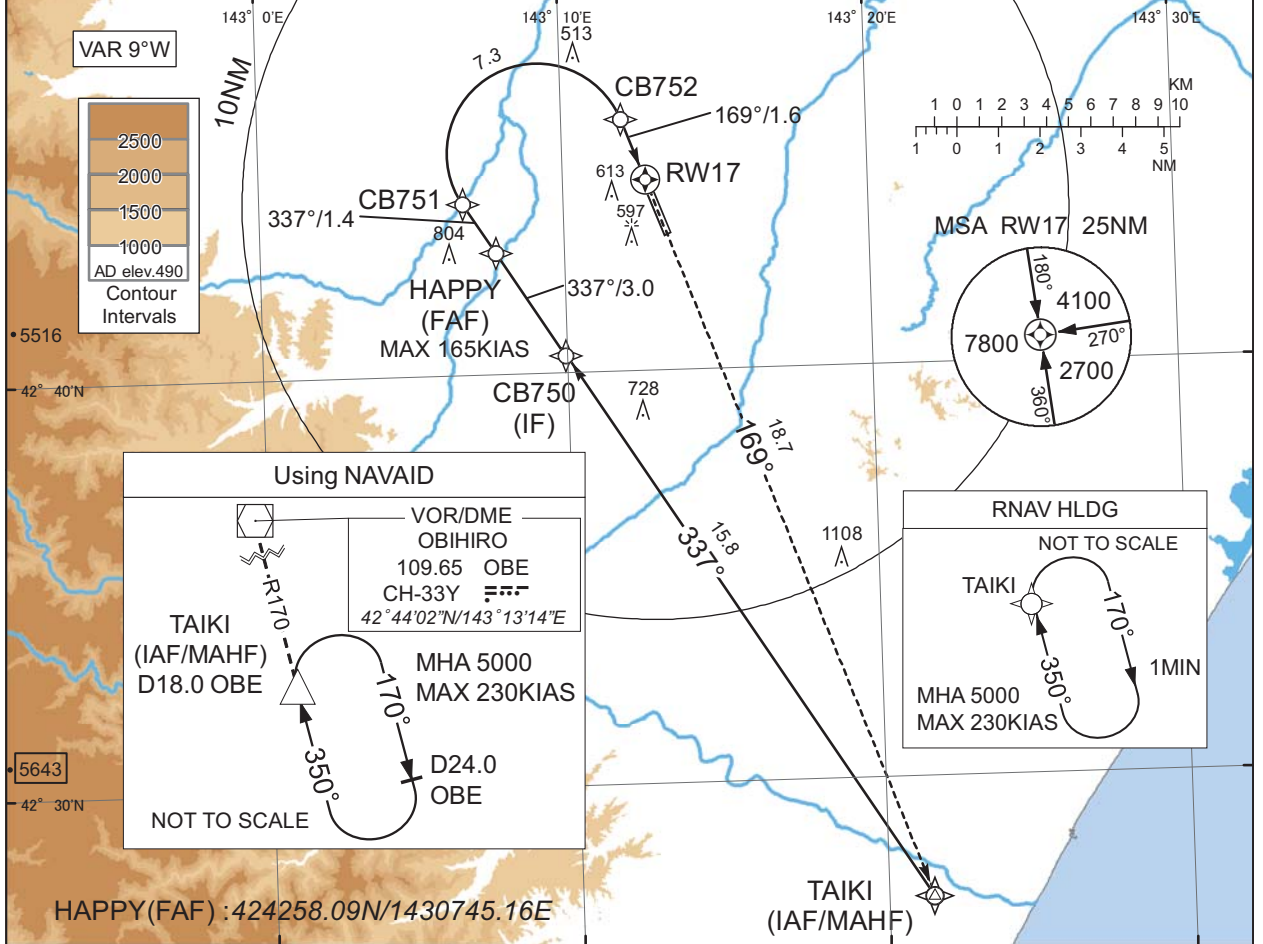
INSTRUMENT APPROACH CHART

RJCB / OBIHIRO

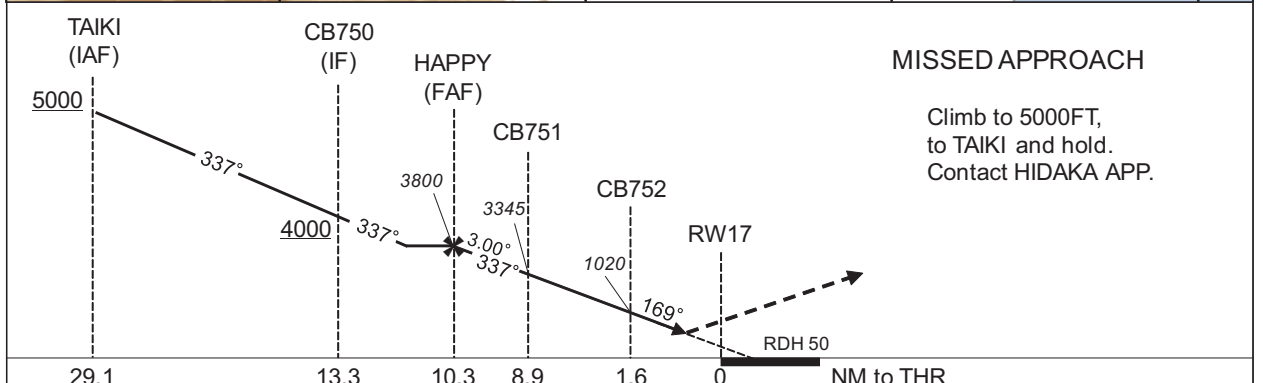
RNP RWY17(AR)

HIDAKA APP 128.325 - 134.55	RNP AR RF required	OBIHIRO TOWER 118.7 - 126.2 - 123.6	RADAR AVBL
--------------------------------	-----------------------	--	------------

For uncompensated Baro-VNAV systems, procedure not authorized below -30°C / above 45°C



CHANGE : ATC call sign and FREQ. Description of RADAR Service. Missed APCH PROC.



MINIMA	THR elev. 470	AD elev. 490
CAT	RNP 0.30	
A	DA(H)	CMV
B	-	-
C	770(300)	1400
D	774(304)	1600

Authorization Required

INSTRUMENT APPROACH CHART

RJCB / OBIHIRO

RNP RWY17(AR)

Coding Table

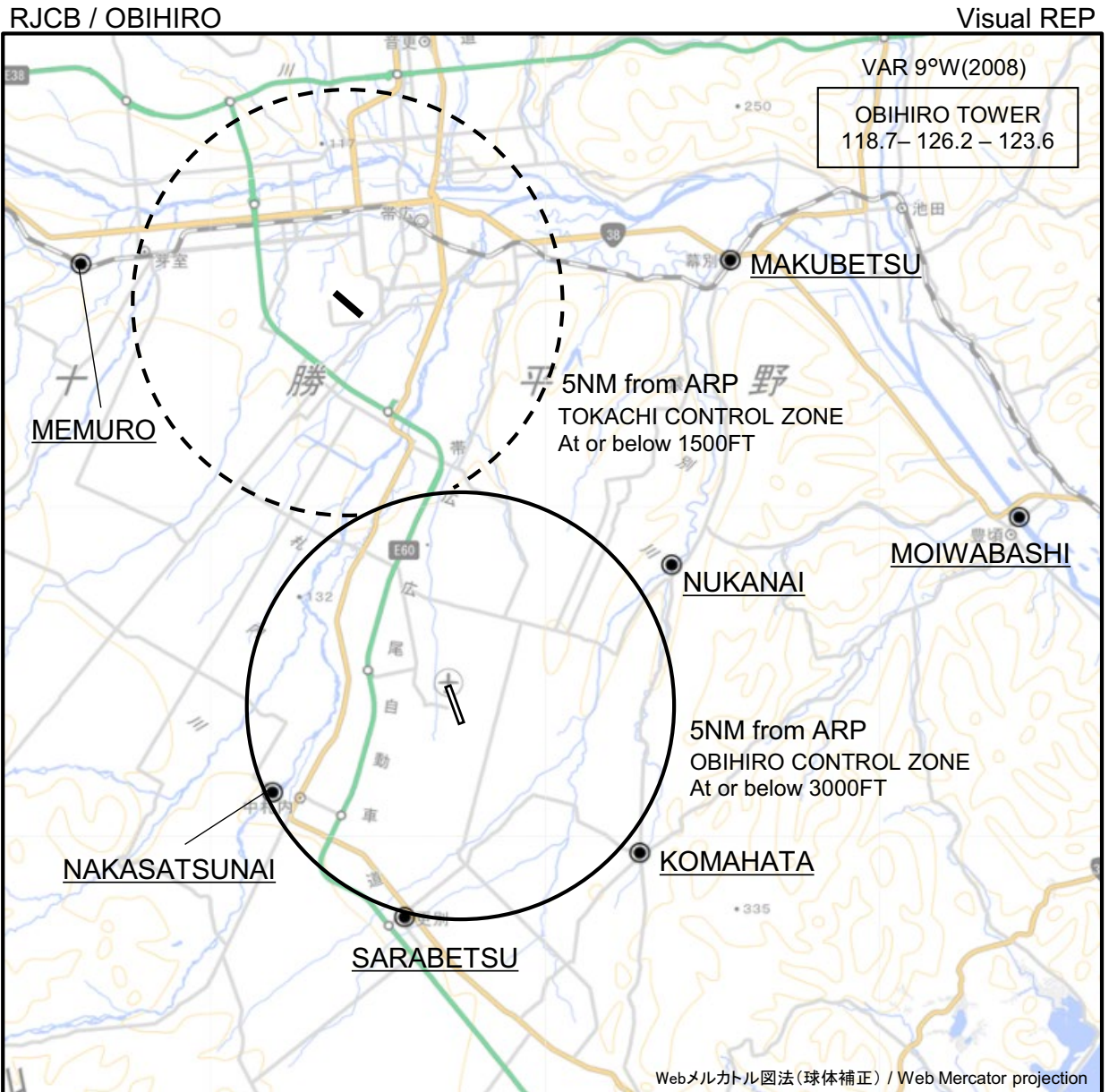
Serial Number	Path Descriptor	Waypoint Identifier	Fly Over	Course °M(°T)	Magnetic Variation	Distance (NM)	Turn Direction	Altitude (FT)	Speed (KIAS)	VPA/ RDH (°/FT)	RNP Value
001	IF	TAIKI	-	-	-9.4	-	-	+5000	-	-	-
002	TF	CB750	-	337 (327.6)	-9.4	15.8	-	+4000	-	-	1.0
003	TF	HAPPY	-	337 (327.5)	-9.4	3.0	-	3800	-165	-	1.0
004	TF	CB751	-	337 (327.4)	-9.4	1.4	-	3345	-	-3.00	0.3
005	RF Center: CBRF1 r=2.18NM	CB752	-	-	-9.4	7.3	R	1020	-	-3.00	0.3
006	TF	RW17	Y	169 (159.4)	-9.4	1.6	-	520	-	-3.00/50	0.3
007	TF	TAIKI	-	169 (159.8)	-9.4	18.7	-	5000	-	-	1.0

Path	Waypoint Identifier	Inbound Course °M(°T)	Magnetic Variation	Outbound Time (MIN)	Turn Direction	Minimum Altitude (FT)	Maximum Altitude (FT)	Speed (KIAS)	RNP Value
Hold	TAIKI	350 (340.3)	-9.4	1.0 (-14000)	R	5000	FL140	-230 (-14000)	1.0

Waypoint Coordinates

Waypoint Identifier	Coordinates	RF Arc Center Identifier	Coordinates
TAIKI	422706.29N / 1432128.22E	CBRF1	424520.85N / 1430911.91E
CB750	424026.47N / 1430956.82E		
HAPPY	424258.09N / 1430745.16E		
CB751	424410.25N / 1430642.42E		
CB752	424607.16N / 1431158.01E		
RW17	424438.86N / 1431243.31E		

CHANGE : VAR. PROC course. RNAV HLDG established.



※図中に標高を示す数字がある場合、単位はメートル(m)である。The unit of measurement used to express elevation is meter(m).

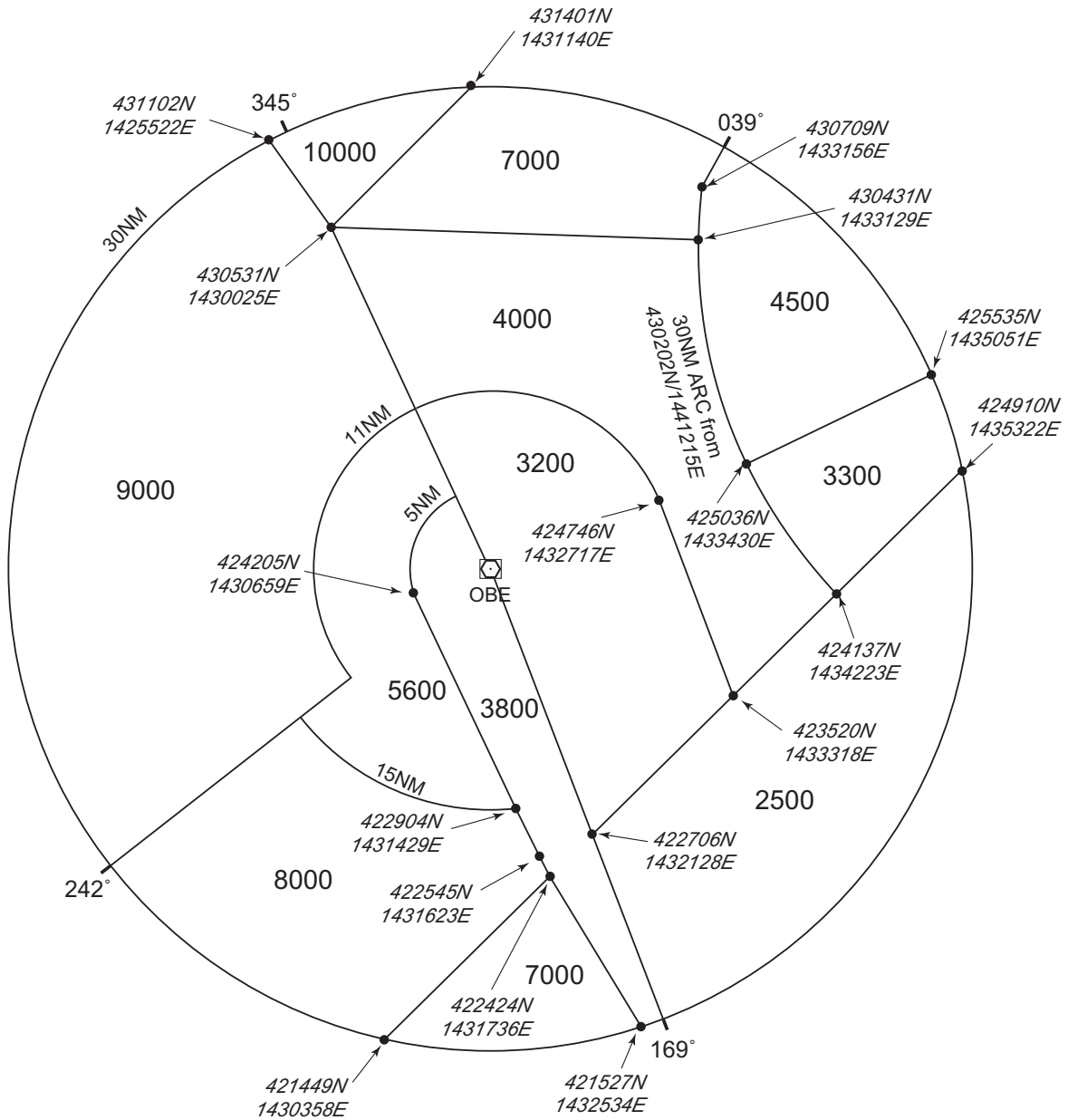
CHANGE : Map updated. BRG/DIST from ARP.

Call sign	BRG / DIST from ARP	Remarks
幕別 Makubetsu	031°T / 12.2NM	JR駅 JR Station
芽室 Memuro	320°T / 13.6NM	JRの鉄橋(芽室駅から西1.5NM) Bridge
茂岩橋 Moiwabashi	071°T / 13.7NM	十勝川の茂岩橋 Bridge
糠内 Nukanai	056°T / 5.9NM	猿別川と糠内川の合流点 The confluence of the Sarubetsu and Nukanai rivers
中札内 Nakasatsunai	245°T / 4.9NM	札内川の中札内橋 Bridge
駒畠 Komahata	130°T / 5.4NM	五差路 Intersection
更別 Sarabetsu	195°T / 5.1NM	更別村役場 Sarabetsu Village office

RJCB / OBIHIRO

Minimum Vectoring Altitude CHART

VAR 9°W (2024)



CENTER : 424402N/1431314E (OBE VOR/DME)

CHANGE : Update.