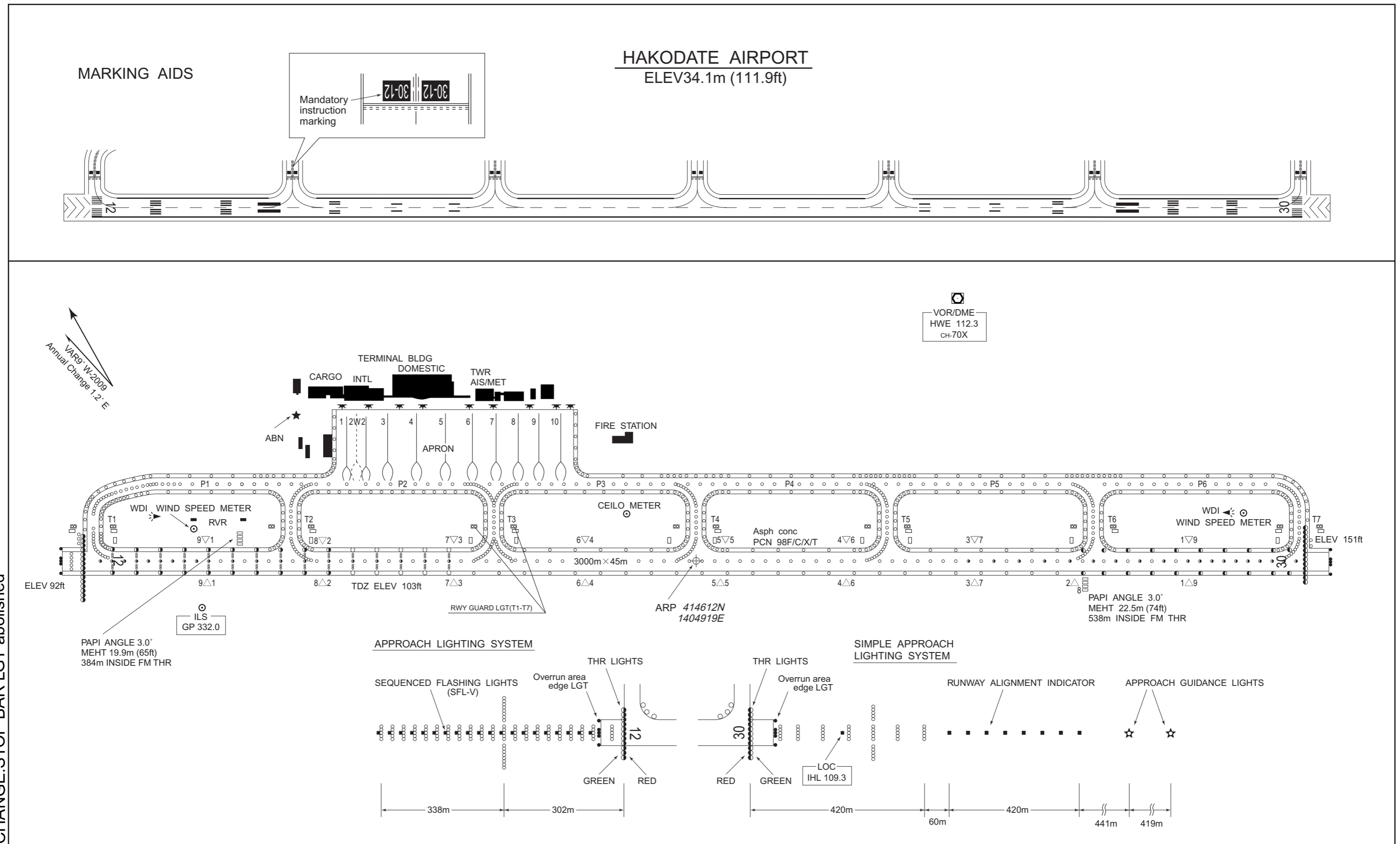


AERODROME CHART



CHANGE: STOP BAR LGT abolished

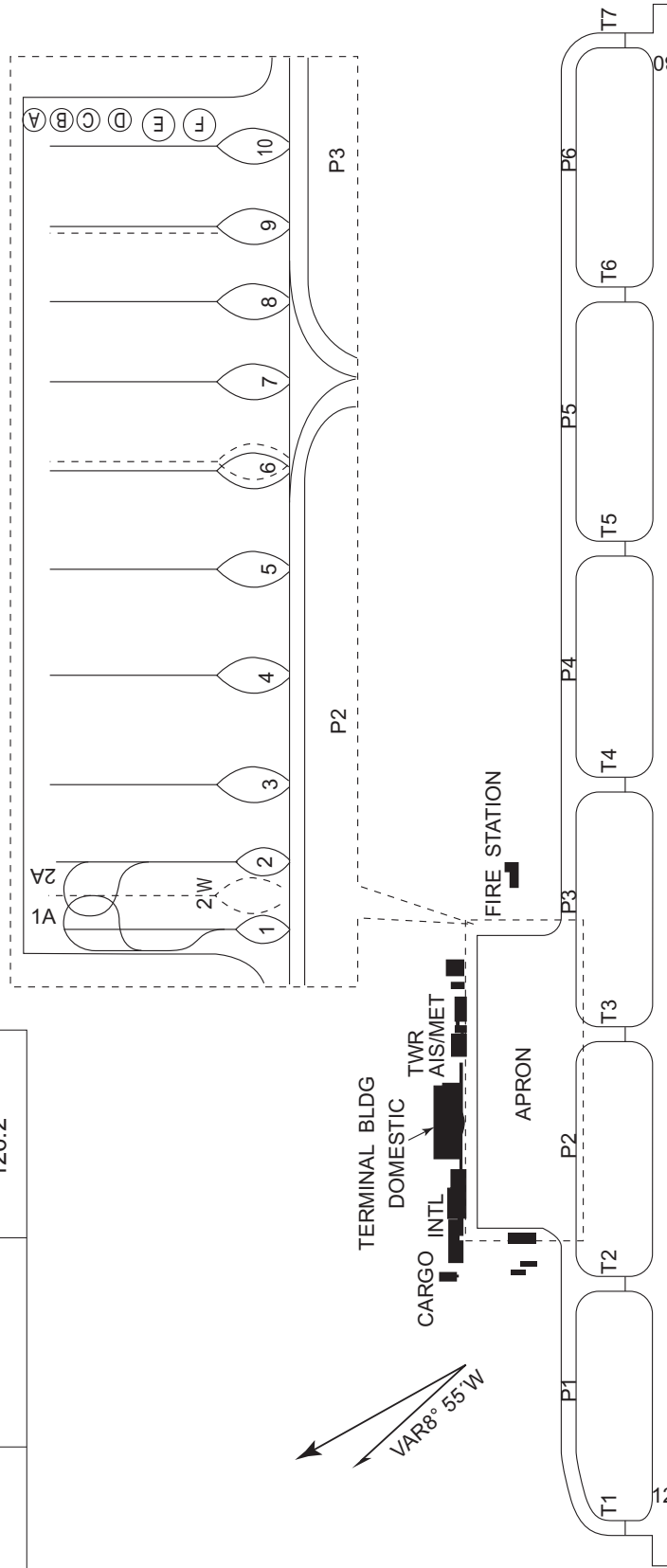
**AIRCRAFT PARKING/DOCKING CHART**  
 RJCH / HAKODATE

**AD CHART**

CHANGE : UHF frequency(TWR) deleted.

**HAKODATE AIRPORT**  
 ELEV34.1m (111.9ft)

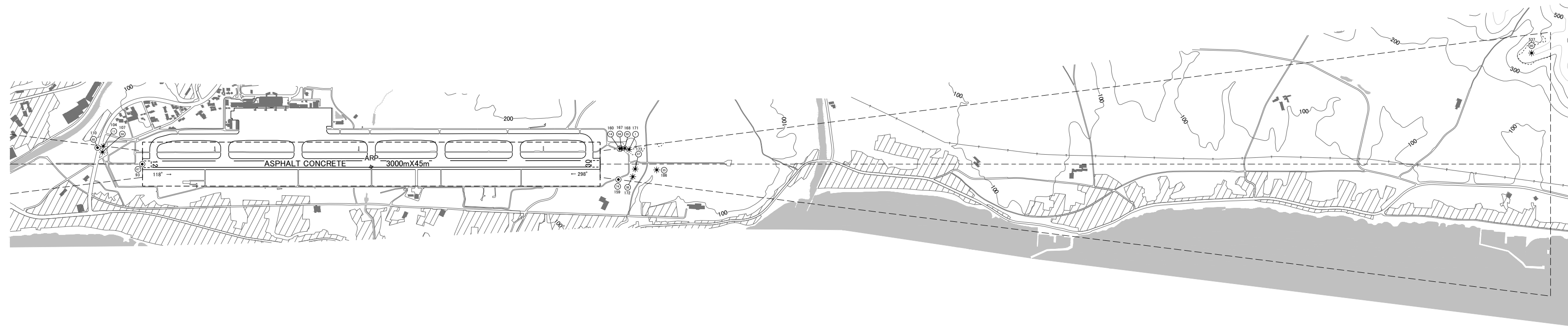
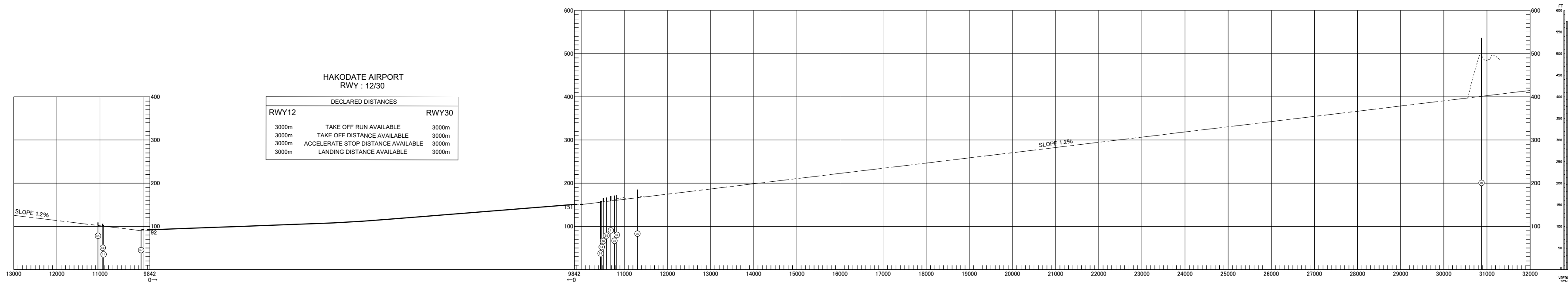
Designation	Call Sign	Frequency (MHz)
ATIS	Hakodate Airport	126.6
TWR	Hakodate Tower	118.35 126.2



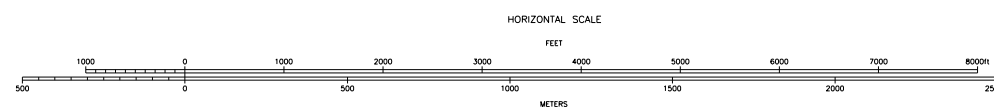
**AERODROME OBSTACLE CHART - ICAO**  
TYPE A (OPERATING LIMITATIONS)

DIMENSIONS AND ELEVATIONS IN FEET, BEARINGS ARE MAGNETIC  
Transverse Mercator Projection

MAGNETIC VARIATION 10°W - OCT 2022



LEGEND	AMENDMENT RECORD	
	Nr	ENTERED BY
① IDENTIFICATION NUMBER		
⊙ POLE, TOWER, SPIRE, ANTENNA, ETC		
* TREE		
▬ RAILROAD		
▬ TRANSMISSION LINE OR OVERHEAD CABLE		
▲ TRIANGULATION POINT		
★ AERONAUTICAL GROUND LIGHT		
■ BUILDING OR LARGE STRUCTURE		
⋯ CONTOURS(FT)		



CHANGE: Update

### AERODROME OBSTACLE CHART - ICAO TYPE A (OPERATING LIMITATIONS)

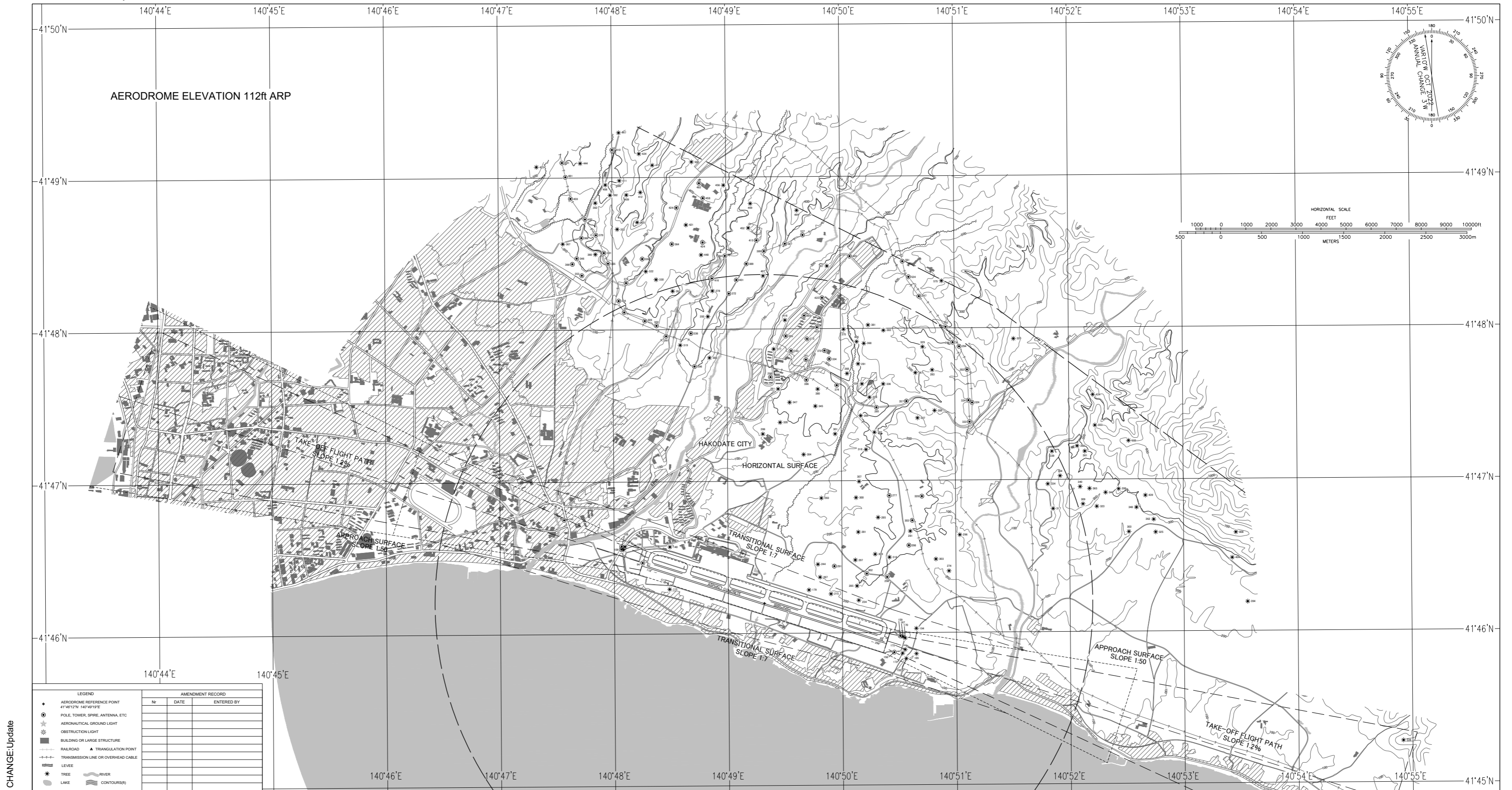
DIMENSIONS AND ELEVATIONS IN FEET, BEARINGS ARE MAGNETIC  
Transverse Mercator Projection



CHANGE Update

**AERODROME OBSTACLE CHART - ICAO**  
TYPE B

DIMENSIONS AND ELEVATIONS IN FEET, BEARINGS ARE MAGNETIC  
Transverse Mercator Projection



STANDARD DEPARTURE CHART - INSTRUMENT

RJCH / HAKODATE

SID

**HAKODATE REVERSAL SIX DEPARTURE**

RWY 12: Climb RWY HDG to 600FT, turn right HDG239° ...

RWY 30: Climb RWY HDG to 500FT, turn left HDG149° ...

...to intercept and proceed via HWE R194 to 3000FT, turn right direct to HWE VOR/DME.  
Cross HWE VOR/DME at or above 5000FT.

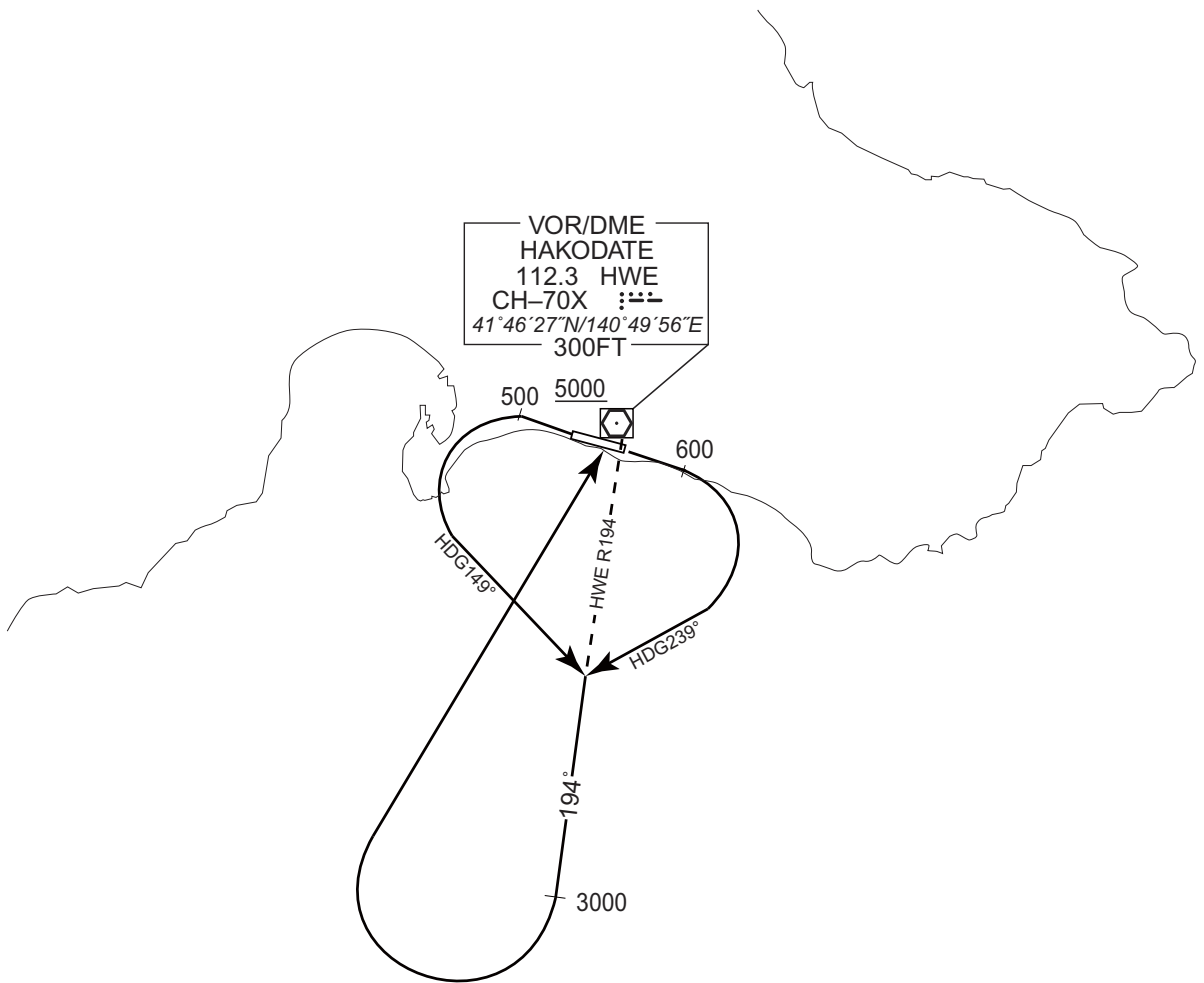
Note RWY12 : 4.0% climb gradient required up to 600FT.

OBST ALT 657FT located at 3.4NM 108° FM end of RWY12.

RWY30 : 5.2% climb gradient required up to 1600FT.

OBST ALT 1294FT located at 4.6NM 268° FM end of RWY30.

CHANGE : PROC renamed(HAKODATE REVERSAL SIX DEPARTURE), PROC abolished(HAKODATE SOUTH SEVEN DEPARTURE, TAPPI SEVEN DEPARTURE, YUWA TRANSITION, ESASI SIX DEPARTURE, TIKYU ONE DEPARTURE). Note(HAKODATE REVERSAL SIX DEPARTURE).

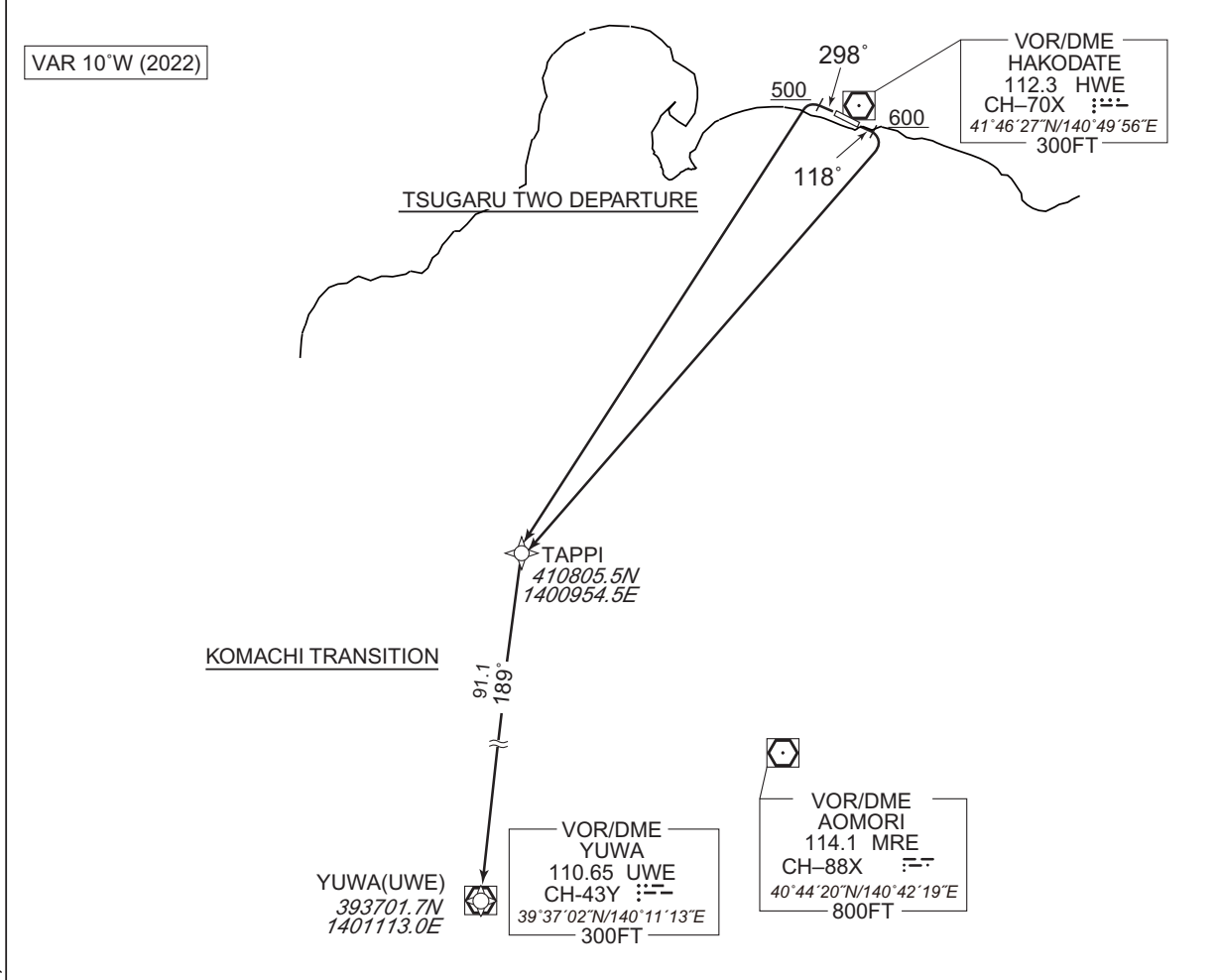


STANDARD DEPARTURE CHART - INSTRUMENT

RJCH / HAKODATE RNAV SID and TRANSITION

<b>TSUGARU TWO DEPARTURE KOMACHI TRANSITION</b>	<b>RNP1</b>
---	-------------

Note GNSS required.



TSUGARU TWO DEPARTURE

RWY12 : Climb on HDG118° at or above 600FT, turn right direct to TAPPI.  
 RWY30 : Climb on HDG298° at or above 500FT, turn left direct to TAPPI.

NOTE RWY12 : 4.0% climb gradient required up to 600FT.  
 OBST ALT 657FT located at 3.4NM 108° FM end of RWY12.  
 RWY30 : 5.2% climb gradient required up to 1600FT.  
 OBST ALT 1294FT located at 4.6NM 268° FM end of RWY30.

KOMACHI TRANSITION

From TAPPI, to UWE.

CHANGE : Navigation Specification(Basic RNP1 → RNP1).

STANDARD DEPARTURE CHART - INSTRUMENT

RJCH / HAKODATE

RNAV SID and TRANSITION

TSUGARU TWO DEPARTURE

RWY12

Serial Number	Path Descriptor	Waypoint Identifier	Fly Over	Course °M(°T)	Magnetic Variation	Distance (NM)	Turn Direction	Altitude (FT)	Speed (KIAS)	Vertical Angle	Navigation Specification
001	VA	-	-	118 (108.0)	-9.6	-	-	+600	-	-	RNP1
002	DF	TAPPI	-	-	-9.6	-	R	-	-	-	RNP1

RWY30

Serial Number	Path Descriptor	Waypoint Identifier	Fly Over	Course °M(°T)	Magnetic Variation	Distance (NM)	Turn Direction	Altitude (FT)	Speed (KIAS)	Vertical Angle	Navigation Specification
001	VA	-	-	298 (288.1)	-9.6	-	-	+500	-	-	RNP1
002	DF	TAPPI	-	-	-9.6	-	L	-	-	-	RNP1

KOMACHI TRANSITION

Serial Number	Path Descriptor	Waypoint Identifier	Fly Over	Course °M(°T)	Magnetic Variation	Distance (NM)	Turn Direction	Altitude (FT)	Speed (KIAS)	Vertical Angle	Navigation Specification
001	IF	TAPPI	-	-	-9.6	-	-	-	-	-	RNP1
002	TF	UWE	-	189 (179.4)	-9.6	91.1	-	-	-	-	RNP1

CHANGE : Navigation Specification(Basic RNP1 → RNP1).



STANDARD DEPARTURE CHART - INSTRUMENT

RJCH / HAKODATE

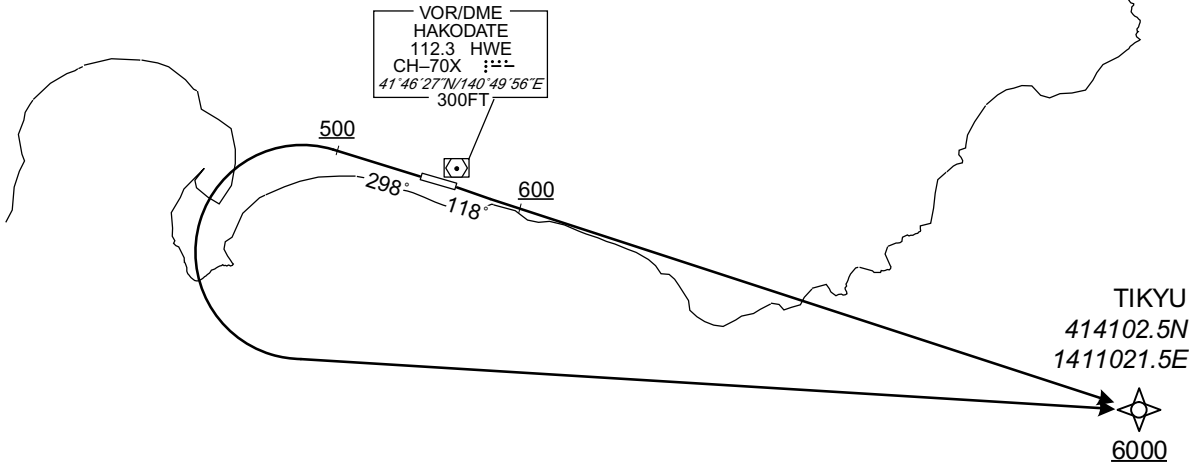
RNAV SID

TOI ONE DEPARTURE

RNP1

Note GNSS required.

VAR 10°W (2022)



RWY12 : Climb on HDG118° at or above 600FT, direct to TIKYU at or above 6000FT.  
 RWY30 : Climb on HDG298° at or above 500FT, turn left direct to TIKYU at or above 6000FT.

NOTE RWY12 : 6.0% climb gradient required up to 1500FT.  
 OBST ALT 1247FT located at 3.6NM 101° FM end of RWY12.  
 RWY30 : 5.2% climb gradient required up to 1600FT.  
 OBST ALT 1294FT located at 4.6NM 268° FM end of RWY30.

CHANGE : Navigation Specification(Basic RNP1 → RNP1).

RWY12

Serial Number	Path Descriptor	Waypoint Identifier	Fly Over	Course °M(°T)	Magnetic Variation	Distance (NM)	Turn Direction	Altitude (FT)	Speed (KIAS)	Vertical Angle	Navigation Specification
001	VA	-	-	118 (108.1)	-9.6	-	-	+600	-	-	RNP1
002	DF	TIKYU	-	-	-9.6	-	-	+6000	-	-	RNP1

RWY30

Serial Number	Path Descriptor	Waypoint Identifier	Fly Over	Course °M(°T)	Magnetic Variation	Distance (NM)	Turn Direction	Altitude (FT)	Speed (KIAS)	Vertical Angle	Navigation Specification
001	VA	-	-	298 (288.1)	-9.6	-	-	+500	-	-	RNP1
002	DF	TIKYU	-	-	-9.6	-	L	+6000	-	-	RNP1

STANDARD DEPARTURE CHART - INSTRUMENT

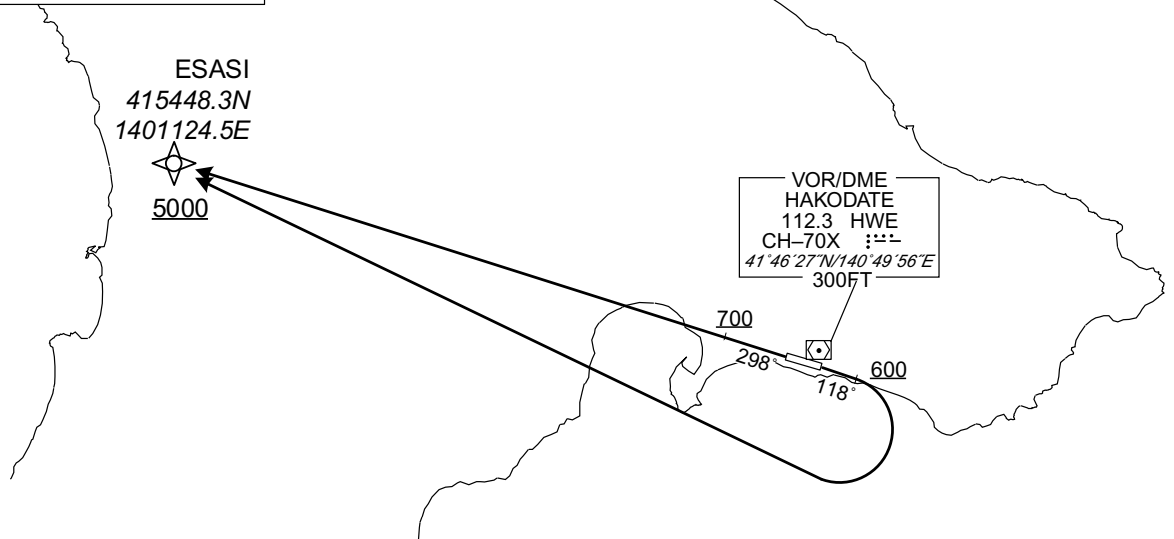
RJCH / HAKODATE

RNAV SID

OKUSHIRI ONE DEPARTURE	RNP1
------------------------	------

Note GNSS required.

VAR 10°W (2022)



RWY12 : Climb on HDG118° at or above 600FT, turn right direct to ESASI at or above 5000FT.  
 RWY30 : Climb on HDG298° at or above 700FT, direct to ESASI at or above 5000FT.

NOTE RWY12 : 4.0% climb gradient required up to 600FT.  
 OBST ALT 657FT located at 3.4NM 108° FM end of RWY12.  
 RWY30 : 3.4% climb gradient required up to 700FT.  
 OBST ALT 1969FT located at 12.2NM 304° FM end of RWY30.

CHANGE : Navigation Specification(Basic RNP1 → RNP1).

RWY12

Serial Number	Path Descriptor	Waypoint Identifier	Fly Over	Course °M(°T)	Magnetic Variation	Distance (NM)	Turn Direction	Altitude (FT)	Speed (KIAS)	Vertical Angle	Navigation Specification
001	VA	-	-	118 (108.1)	-9.6	-	-	+600	-	-	RNP1
002	DF	ESASI	-	-	-9.6	-	R	+5000	-	-	RNP1

RWY30

Serial Number	Path Descriptor	Waypoint Identifier	Fly Over	Course °M(°T)	Magnetic Variation	Distance (NM)	Turn Direction	Altitude (FT)	Speed (KIAS)	Vertical Angle	Navigation Specification
001	VA	-	-	298 (288.1)	-9.6	-	-	+700	-	-	RNP1
002	DF	ESASI	-	-	-9.6	-	-	+5000	-	-	RNP1

**INTENTIONALLY LEFT BLANK**

STANDARD ARRIVAL CHART - INSTRUMENT

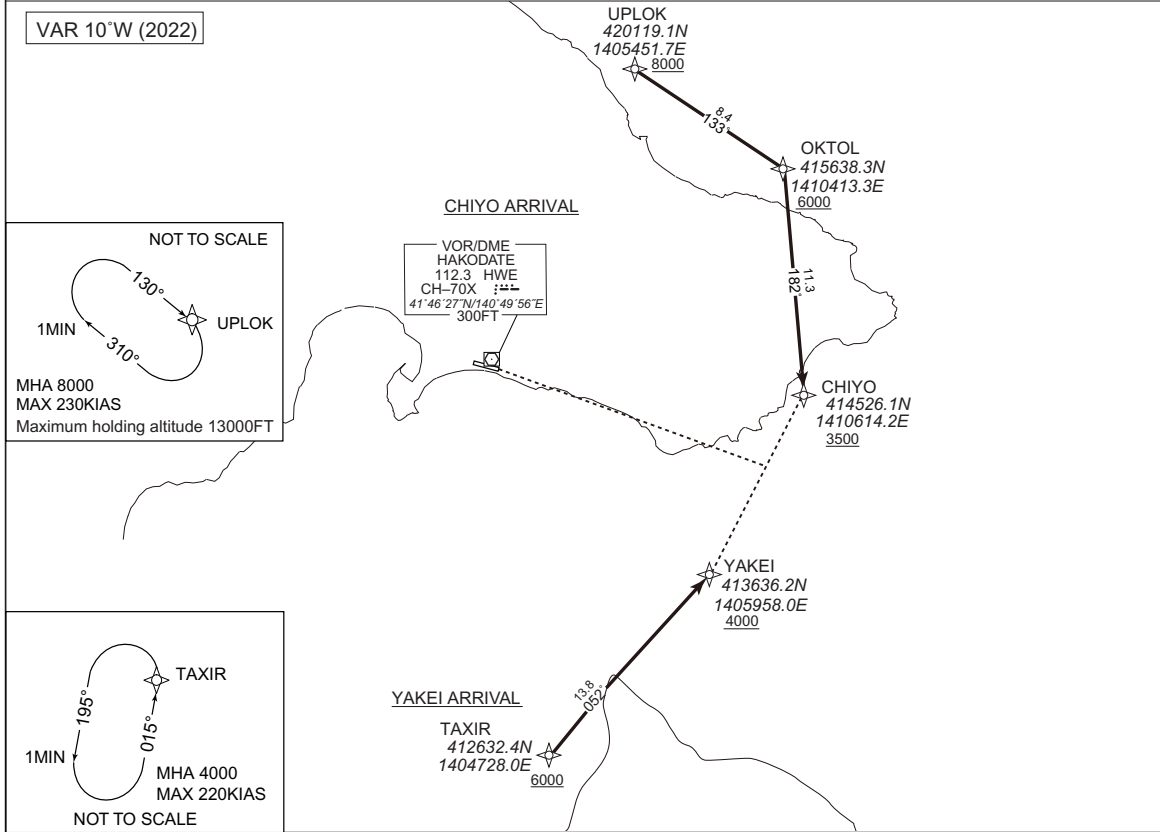
RJCH / HAKODATE RNAV STAR RWY30

CHIYO ARRIVAL  
YAKEI ARRIVAL

RNP1

Note GNSS required.

VAR 10°W (2022)



**CHIYO ARRIVAL**

From UPLOK at or above 8000FT, to OKTOL at or above 6000FT, to CHIYO at or above 3500FT.

Serial Number	Path Descriptor	Waypoint Identifier	Fly Over	Course °M(°T)	Magnetic Variation	Distance (NM)	Turn Direction	Altitude (FT)	Speed (KIAS)	Vertical Angle	Navigation Specification
001	IF	UPLOK	—	—	-9.6	—	—	+8000	—	—	RNP1
002	TF	OKTOL	—	133 (123.9)	-9.6	8.4	—	+6000	—	—	RNP1
003	TF	CHIYO	—	182 (172.4)	-9.6	11.3	—	+3500	—	—	RNP1

Path	Waypoint Identifier	Inbound Course °M(°T)	Magnetic Variation	Outbound Time (MIN)	Turn Direction	Minimum Altitude (FT)	Maximum Altitude (FT)	Speed (KIAS)	Navigation Specification
Hold	UPLOK	130 (120.0)	-9.6	1.0(-14000)	R	8000	13000	-230(-13000)	RNP1

**YAKEI ARRIVAL**

From TAXIR at or above 6000FT, to YAKEI at or above 4000FT.

Serial Number	Path Descriptor	Waypoint Identifier	Fly Over	Course °M(°T)	Magnetic Variation	Distance (NM)	Turn Direction	Altitude (FT)	Speed (KIAS)	Vertical Angle	Navigation Specification
001	IF	TAXIR	—	—	-9.6	—	—	+6000	—	—	RNP1
002	TF	YAKEI	—	052 (042.9)	-9.6	13.8	—	+4000	—	—	RNP1

Path	Waypoint Identifier	Inbound Course °M(°T)	Magnetic Variation	Outbound Time (MIN)	Turn Direction	Minimum Altitude (FT)	Maximum Altitude (FT)	Speed (KIAS)	Navigation Specification
Hold	TAXIR	015 (005.3)	-9.6	1.0(-14000)	L	4000	FL140	-220(-14000)	RNP1

CHANGE : Navigation Specification(Basic RNP1 → RNP1).

STANDARD ARRIVAL CHART - INSTRUMENT

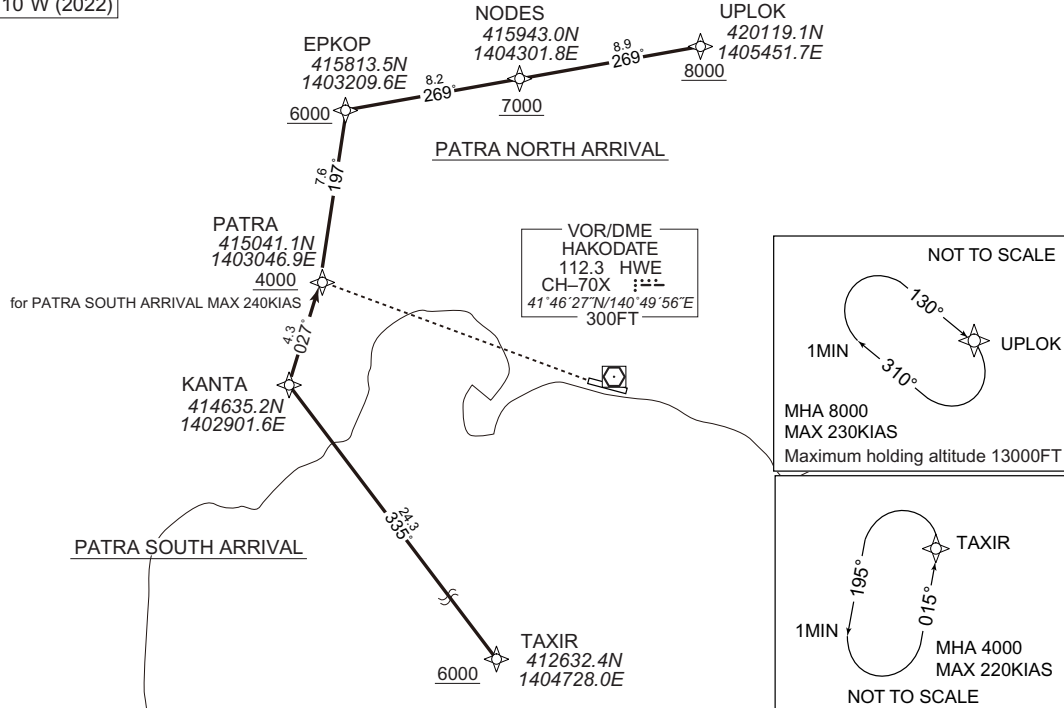
RJCH / HAKODATE

RNAV STAR RWY12

PATRA NORTH ARRIVAL PATRA SOUTH ARRIVAL	RNP1
--	------

Note GNSS required

VAR 10°W (2022)



**PATRA NORTH ARRIVAL**

From UPLOK at or above 8000FT, to NODES at or above 7000FT, to EPKOP at or above 6000FT, to PATRA at or above 4000FT.

Serial Number	Path Descriptor	Waypoint Identifier	Fly Over	Course °M(°T)	Magnetic Variation	Distance (NM)	Turn Direction	Altitude (FT)	Speed (KIAS)	Vertical Angle	Navigation Specification
001	IF	UPLOK	—	—	-9.6	—	—	+8000	—	—	RNP1
002	TF	NODES	—	269 (259.7)	-9.6	8.9	—	+7000	—	—	RNP1
003	TF	EPKOP	—	269 (259.6)	-9.6	8.2	—	+6000	—	—	RNP1
004	TF	PATRA	—	197 (187.8)	-9.6	7.6	—	+4000	—	—	RNP1

Path	Waypoint Identifier	Inbound Course °M(°T)	Magnetic Variation	Outbound Time (MIN)	Turn Direction	Minimum Altitude (FT)	Maximum Altitude (FT)	Speed (KIAS)	Navigation Specification
Hold	UPLOK	130 (120.0)	-9.6	1.0(-14000)	R	8000	13000	-230(-13000)	RNP1

**PATRA SOUTH ARRIVAL**

From TAXIR at or above 6000FT, to KANTA, to PATRA at or above 4000FT.

Serial Number	Path Descriptor	Waypoint Identifier	Fly Over	Course °M(°T)	Magnetic Variation	Distance (NM)	Turn Direction	Altitude (FT)	Speed (KIAS)	Vertical Angle	Navigation Specification
001	IF	TAXIR	—	—	-9.6	—	—	+6000	—	—	RNP1
002	TF	KANTA	—	335 (325.6)	-9.6	24.3	—	—	—	—	RNP1
003	TF	PATRA	—	027 (017.7)	-9.6	4.3	—	+4000	-240	—	RNP1

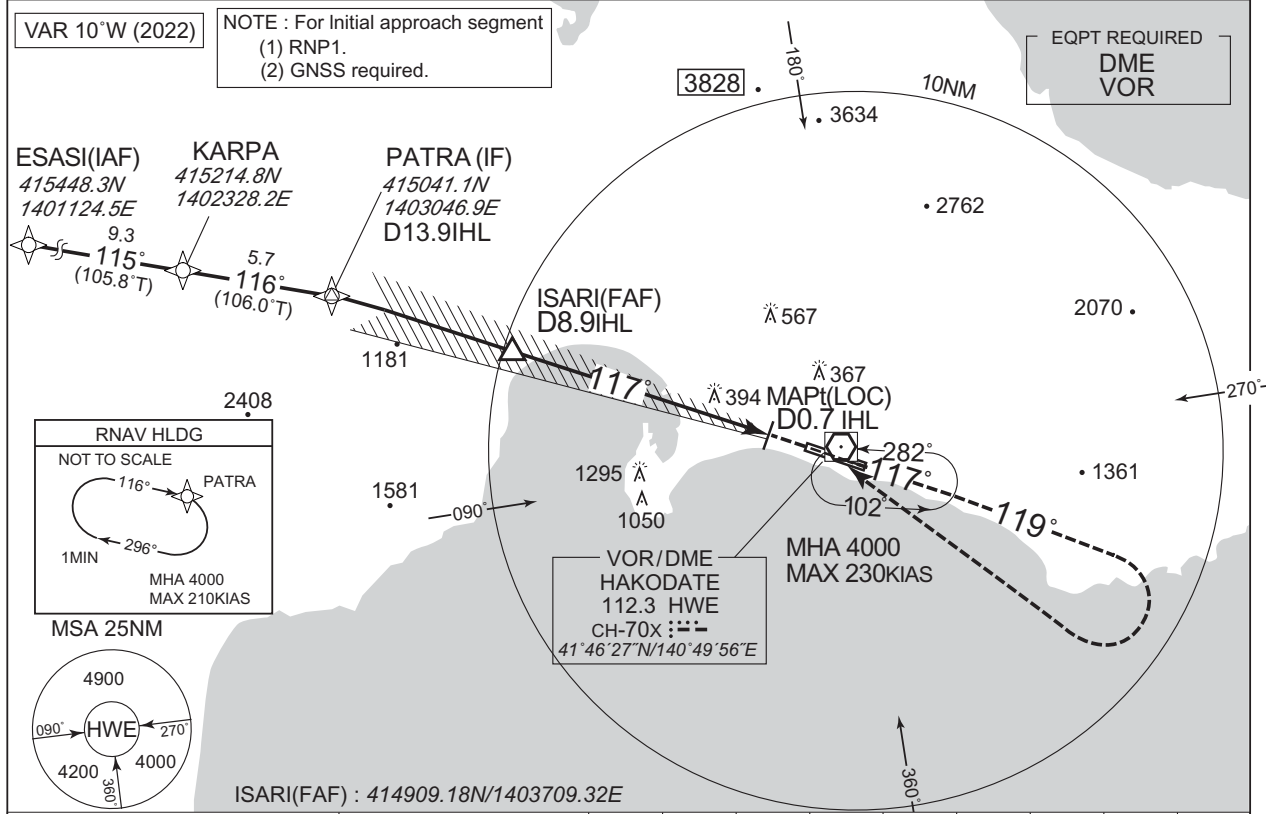
Path	Waypoint Identifier	Inbound Course °M(°T)	Magnetic Variation	Outbound Time (MIN)	Turn Direction	Minimum Altitude (FT)	Maximum Altitude (FT)	Speed (KIAS)	Navigation Specification
Hold	TAXIR	015 (005.3)	-9.6	1.0(-14000)	L	4000	FL140	-220(-14000)	RNP1

CHANGE : Navigation Specification(Basic RNP1 → RNP1).

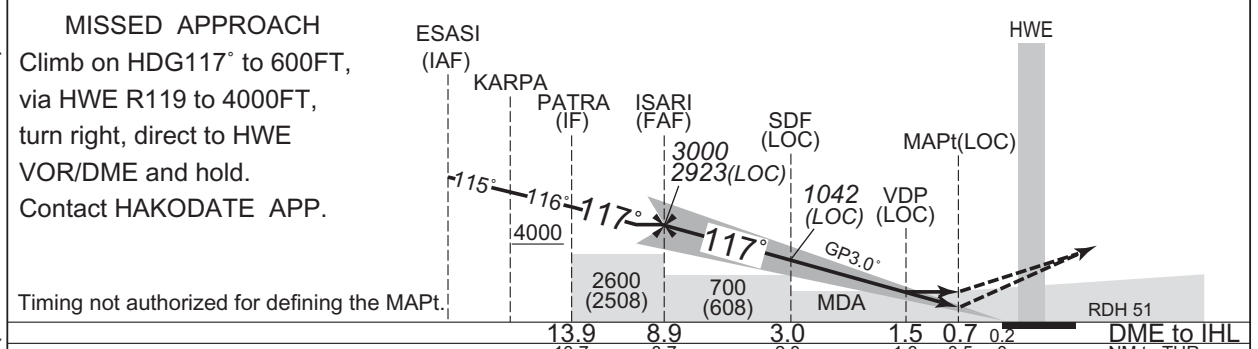
INSTRUMENT APPROACH CHART

RJCH / HAKODATE ILS Z or LOC Z RWY12

HAKODATE APP 119.0 – 121.0 127.9	ILS-LOC 109.3 IHL :::: ILS-GP 332.0 ILS-DME IHL CH-30x	HAKODATE TWR 118.35 – 126.2	RADAR AVBL ATIS 126.6
--	---	--------------------------------	--------------------------



NM to IHL	FAF	8	7	6	5	4	3	2	MAPt
ALT (3.0° APCH Path)	2923	2634	2316	1997	1679	1361	1042	724	-



Missed APCH climb gradient MNM 5.0%

MINIMA		THR elev. 92		AD elev. 112		
CAT	CAT I		LOC		CIRCLING	
	DA(H)	RVR/CMV	MDA(H)	RVR/CMV	MDA(H)	VIS
A	292 (200)	700	540 (448)	1200	550 (438)	1600
B				1300	570 (458)	
C	299 (207)			1400	600 (488)	2400
D	309 (217)			1600	690 (578)	3200

Circling to SOUTH side of RWY only.  
MINIMA with Missed APCH climb gradient of 2.5% are not established.

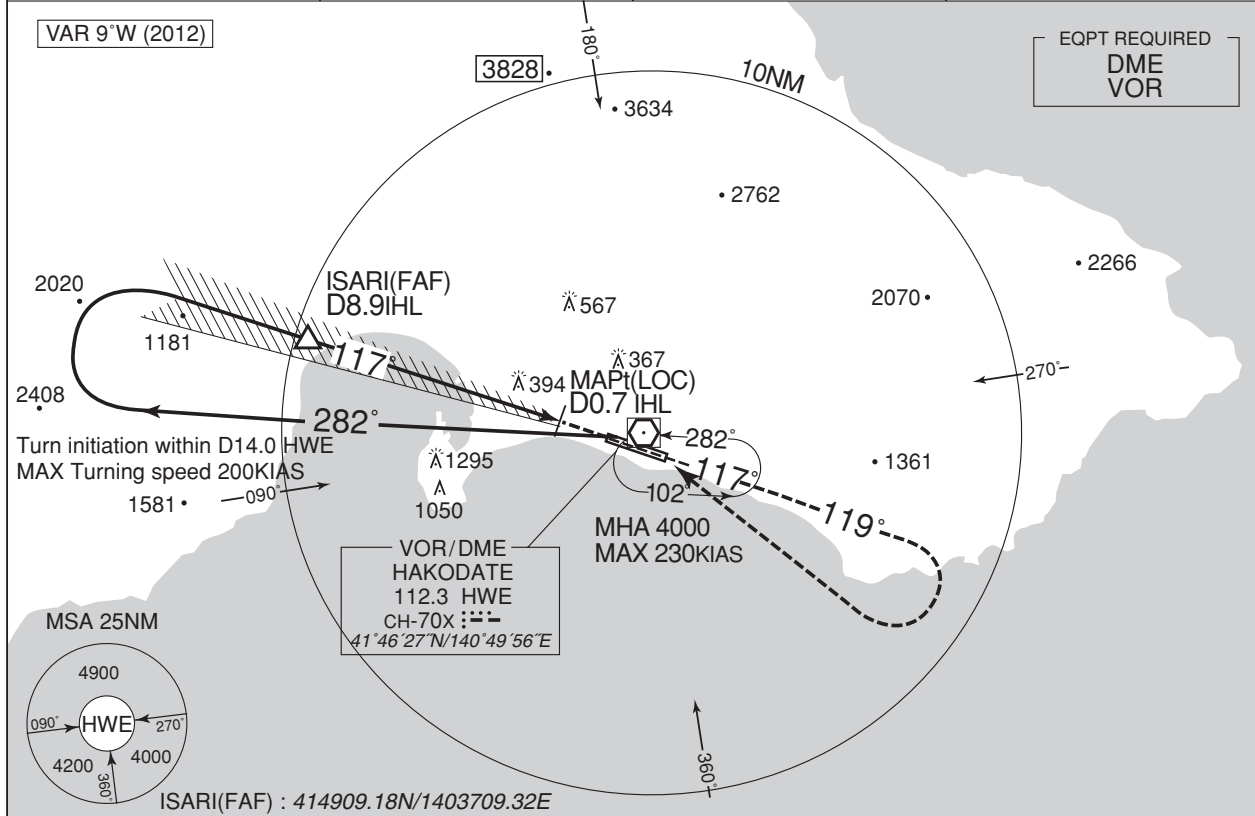
CHANGE : Navigation Specification(Basic RNP1 → RNP1).

INSTRUMENT APPROACH CHART

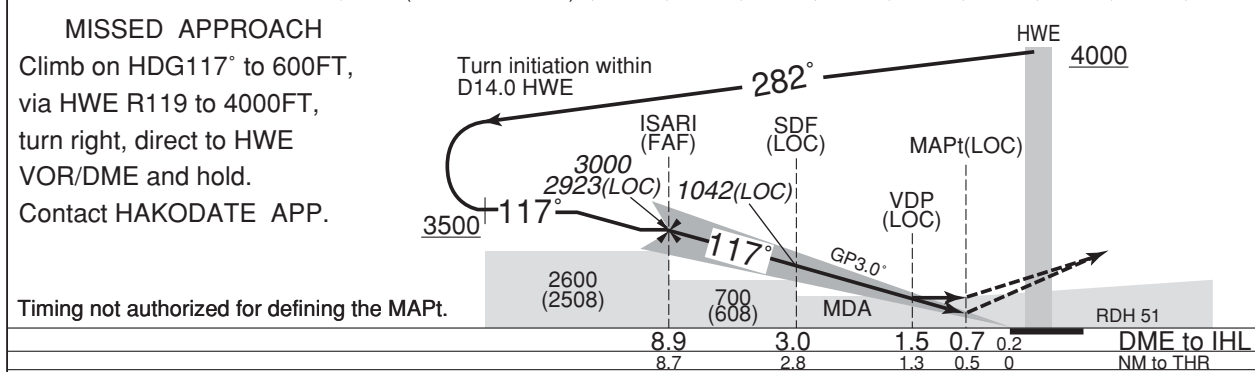
RJCH / HAKODATE

ILS Y or LOC Y RWY12

HAKODATE APP 119.0 – 121.0 127.9	ILS-LOC 109.3 IHL :::: ILS-GP 332.0 ILS-DME IHL CH-30x	HAKODATE TWR 118.35 – 126.2	RADAR AVBL ATIS 126.6
--	---	--------------------------------	--------------------------



NM to IHL	FAF	8	7	6	5	4	3	2	MAPt
ALT (3.0° APCH Path)	2923	2634	2316	1997	1679	1361	1042	724	-



Missed APCH climb gradient MNM 5.0%

MINIMA		THR elev. 92		AD elev. 112		
CAT	CAT I		LOC		CIRCLING	
	DA(H)	RVR/CMV	MDA(H)	RVR/CMV	MDA(H)	VIS
A	292 (200)	700	540 (448)	1200	550 (438)	1600
B				1300	570 (458)	
C				1400	600 (488)	2400
D				1600	690 (578)	

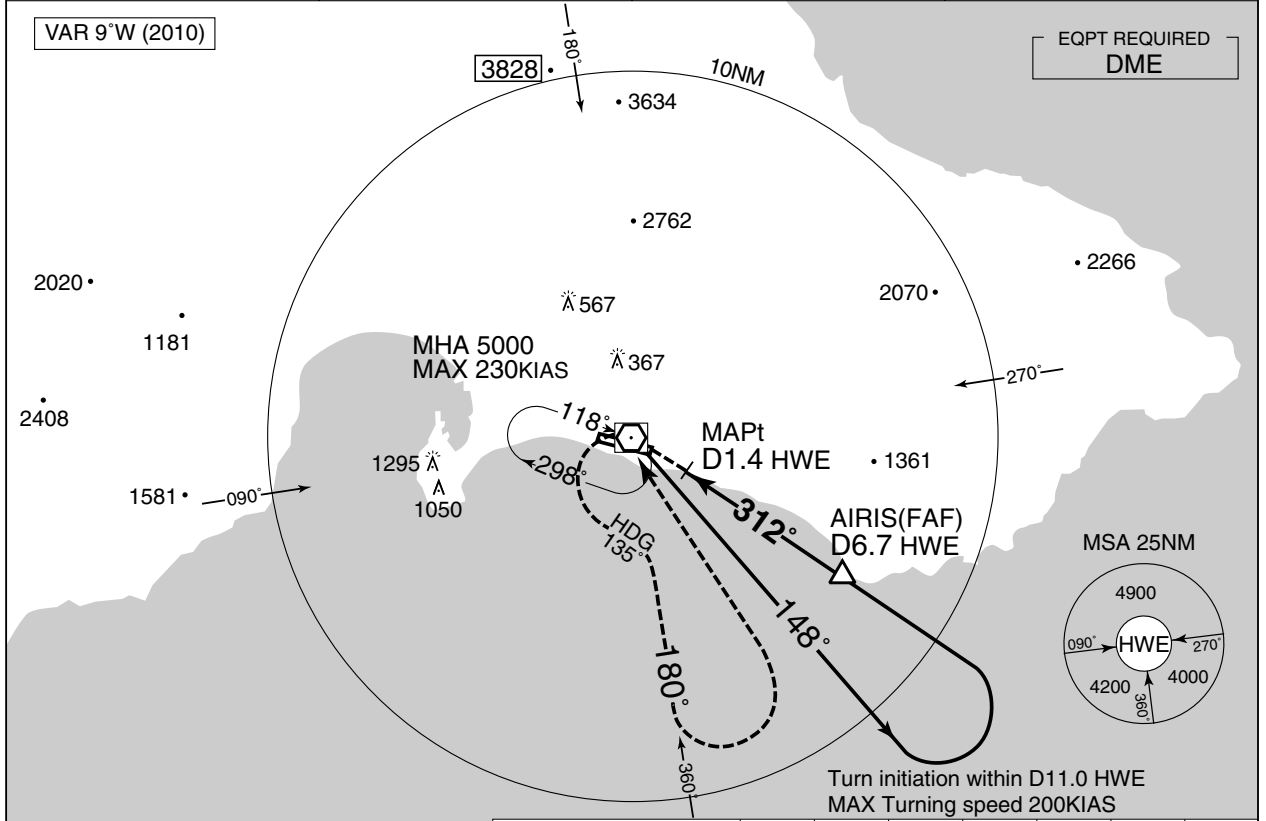
Circling to SOUTH side of RWY only.  
MINIMA with Missed APCH climb gradient of 2.5% are not established.

INSTRUMENT APPROACH CHART

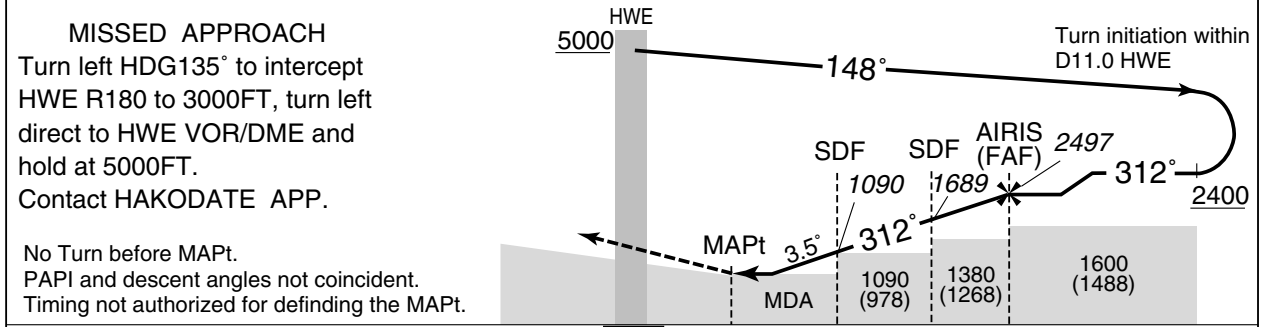
RJCH / HAKODATE

VOR RWY30

HAKODATE APP 119.0 – 121.0 127.9	HAKODATE VOR/DME 112.3 HWE CH-70X 41°46'27"N/140°49'56"E	HAKODATE TOWER 118.35 – 126.2	RADAR AVBL ATIS 126.6
--	---	----------------------------------	--------------------------



NM to HWE	MAPt	2	3	4	5	6	FAF
ALT (3.5° APCH Path)	-	750	1122	1494	1865	2237	2497



DME to HWE	0.5	1.4	2.9	4.5	6.7
NM to THR	0	0.9	2.4	4.0	6.2

MINIMA		THR elev. 151	AD elev. 112	
CAT			CIRCLING	
	MDA(H)	CMV	MDA(H) VIS	
A	730 (618)	1000	730 (618)	1600
B		1200		2400
C			1600	3200
D				

Circling to SOUTH side of RWY only.

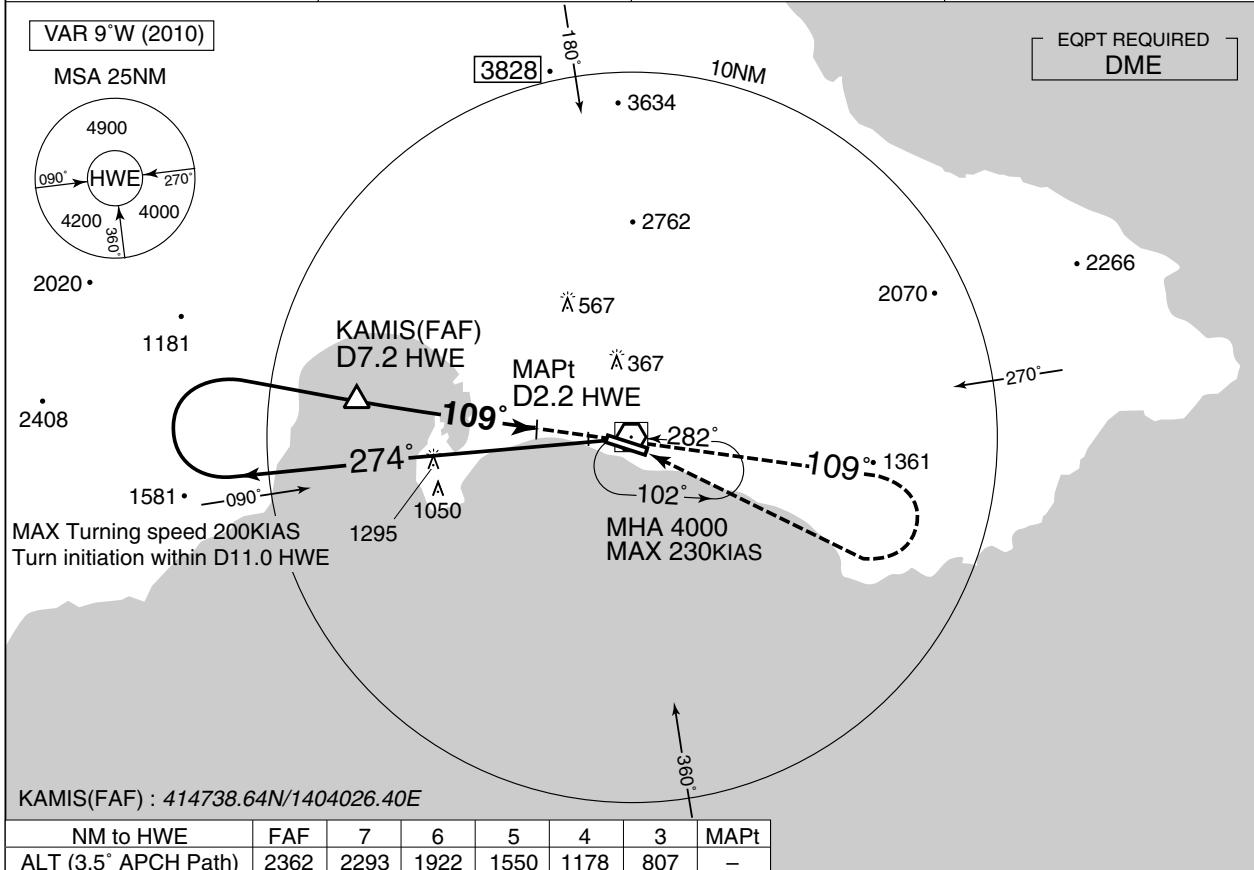


INSTRUMENT APPROACH CHART

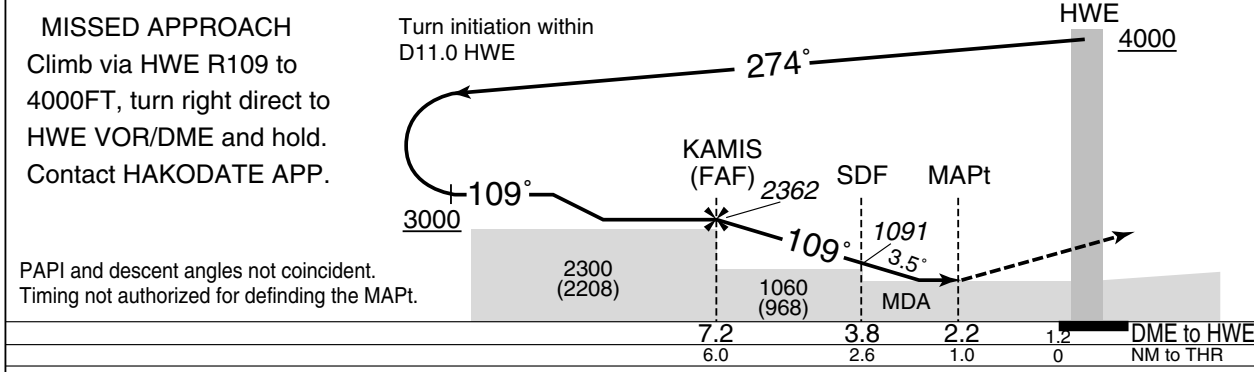
RJCH / HAKODATE

VOR RWY12

HAKODATE APP 119.0 – 121.0 127.9	HAKODATE VOR/DME 112.3 HWE CH-70X 41°46'27"N/140°49'56"E	HAKODATE TOWER 118.35 – 126.2	RADAR AVBL ATIS 126.6
--	---	----------------------------------	--------------------------



NM to HWE	FAF	7	6	5	4	3	MAPt
ALT (3.5° APCH Path)	2362	2293	1922	1550	1178	807	-

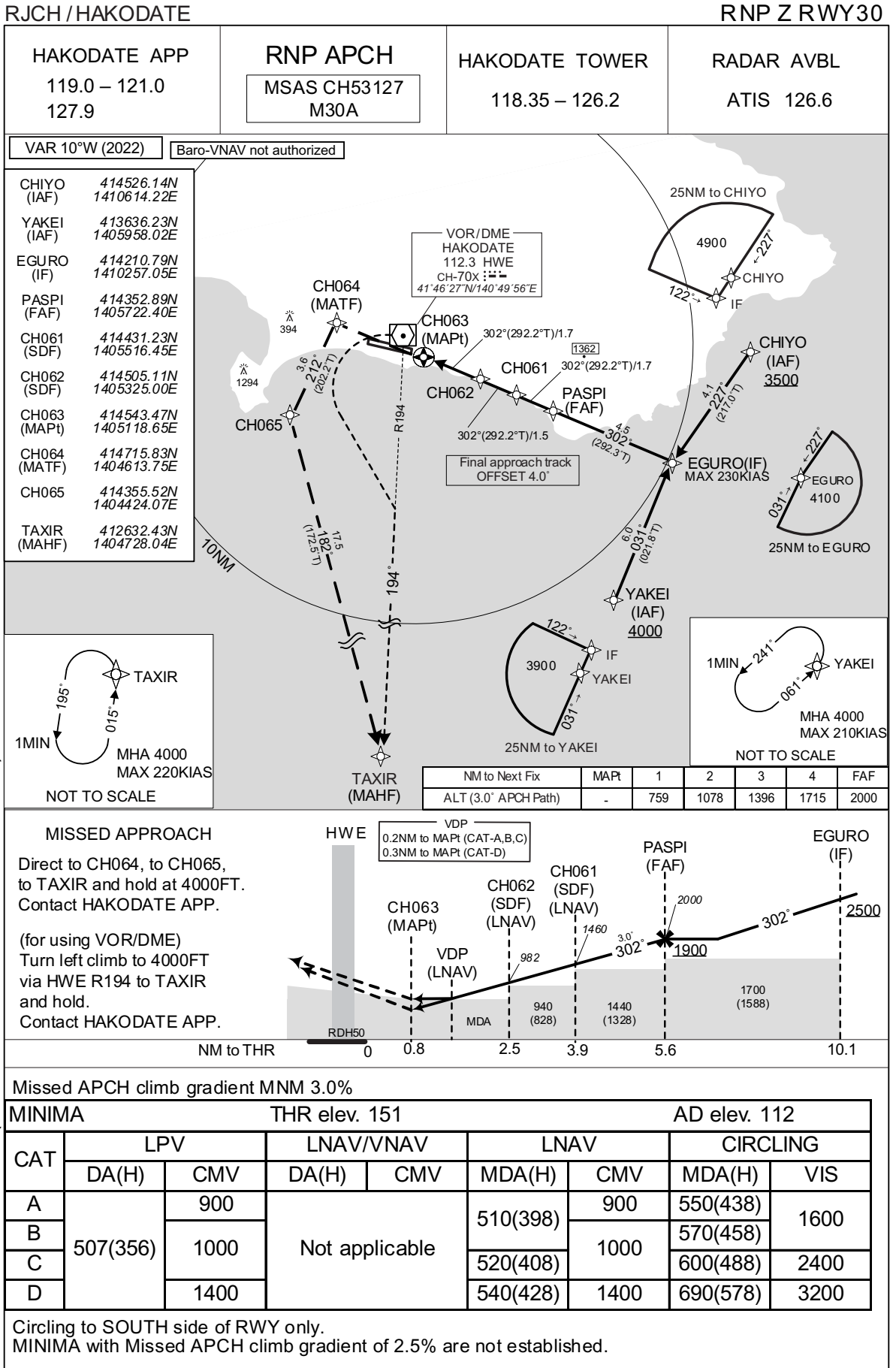


Missed APCH climb gradient MNM 3.6%

MINIMA		THR elev. 92	AD elev. 112
CAT	CIRCLING		
	MDA(H)	RVR/CMV	MDA(H) VIS
A	530 (438)	1200	550 (438) 1600
B		1300	570 (458)
C		1400	600 (488) 2400
D		1600	690 (578) 3200

Circling to SOUTH side of RWY only.  
MINIMA with Missed APCH climb gradient of 2.5% are not established.

INSTRUMENT APPROACH CHART



CHANGE : VAR. MSAS CH added. PROC course. FIX established(EGURO,PASPI,CH061,CH062,CH063,CH064,CH065).  
FIX abolished(ROCCA,KARU,CH058,CH059,CH060). PROC ALT. MINIMA for LPV established. MINIMA for LNAV.

INSTRUMENT APPROACH CHART

RJCH / HAKODATE

RNP Z RWY30

**FAS DATA BLOCK**

Operation type	0	LTP/FTP ellipsoidal height	+00803
SBAS service provider identifier	2	FPAP latitude	414636.9835N
Airport identifier	RJCH	FPAP longitude	1404822.0795E
Runway	30	Threshold crossing height	00015.0
Approach performance designator	0	TCH units selector	1
Route indicator	Z	Glide path angle	03.00
Reference path data selector	0	Course width at threshold	105.00
Reference path ID	M30A	∠ length offset	0000
LTP/FTP latitude	414600.5615N	HAL	40.0
LTP/FTP longitude	1405022.5820E	VAL	50.0
CRC remainder	5F964DC7		

**Required additional data**

LTP/FTP orthometric height	46.0
----------------------------	------

CHANGE : Description of FAS DATA BLOCK ITEM(CRC remainder).

INSTRUMENT APPROACH CHART

RJCH / HAKODATE

RNP Y RWY30(AR)

HAKODATE APP 119.0 - 121.0 127.9	RNP AR RF required.	HAKODATE TWR 118.35 - 126.2	RADAR AVBL ATIS 126.6
--	------------------------	--------------------------------	--------------------------

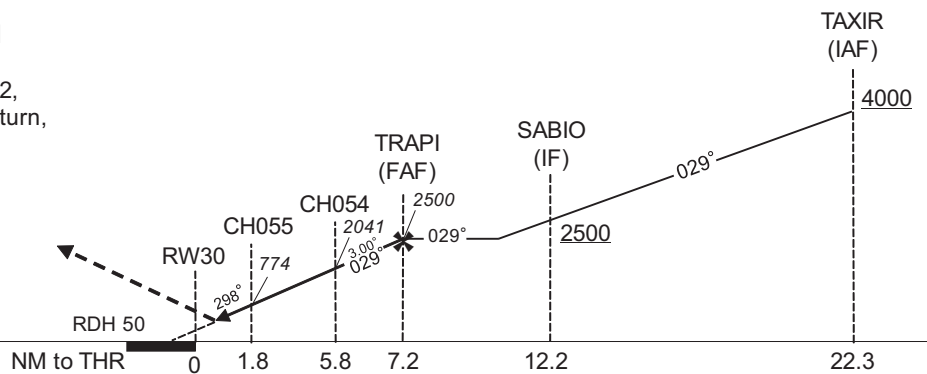
For uncompensated Baro-VNAV systems, procedure not authorized below -20°C / above 45°C



CHANGE : VAR. Course FM RW30 to CH272. RNAV HLDG established (TAXIR). HLDG for using NAVAID abolished (TAXIR).

MISSED APPROACH

Climb to 4000FT, to CH272, to CH056 via fixed radius turn, to TAXIR and hold. Contact HAKODATE APP.



MINIMA	THR elev. 151	AD elev. 112
CAT	RNP 0.30	
	DA(H)	CMV
A	-	-
B	-	-
C	486(335)	1000
D	496(345)	1400

**Authorization Required**

INSTRUMENT APPROACH CHART

RJCH / HAKODATE

RNP Y RWY30(AR)

Coding Table

Serial Number	Path Descriptor	Waypoint Identifier	Fly Over	Course °M(°T)	Magnetic Variation	Distance (NM)	Turn Direction	Altitude (FT)	Speed (KIAS)	VPA/RDH (°/FT)	RNP Value
001	IF	TAXIR	-	-	-9.6	-	-	+4000	-	-	-
002	TF	SABIO	-	029 (019.2)	-9.6	10.1	-	+2500	-	-	1.0
003	TF	TRAPI	-	029 (019.2)	-9.6	5.0	-	2500	-	-	1.0
004	TF	CH054	-	029 (019.2)	-9.6	1.4	-	2041	-	-3.00	0.3
005	RF Center: CHRF3 r=2.50NM	CH055	-	-	-9.6	4.0	L	774	-	-3.00	0.3
006	TF	RW30	Y	298 (288.1)	-9.6	1.8	-	201	-	-3.00/50	0.3
007	TF	CH272	-	298 (288.1)	-9.6	5.6	-	-	-	-	1.0
008	RF Center: CHRF4 r=2.90NM	CH056	-	-	-9.6	6.6	L	-	-	-	1.0
009	TF	TAXIR	-	168 (158.5)	-9.6	18.6	-	4000	-	-	1.0

Path	Waypoint Identifier	Inbound Course °M(°T)	Magnetic Variation	Outbound Time (MIN)	Turn Direction	Minimum Altitude (FT)	Maximum Altitude (FT)	Speed (KIAS)	RNP Value
Hold	TAXIR	015 (005.3)	-9.6	1.0 (-14000)	L	4000	FL140	-220 (-14000)	1.0

Waypoint Coordinates

Waypoint Identifier	Coordinates	RF Arc Center Identifier	Coordinates
TAXIR	412632.43N / 1404728.04E	CHRF3	414301.30N / 1405136.09E
SABIO	413606.58N / 1405154.81E	CHRF4	414456.26N / 1404159.49E
TRAPI	414049.99N / 1405407.02E		
CH054	414211.71N / 1405445.20E		
CH055	414524.03N / 1405238.26E		
RW30	414557.54N / 1405021.00E		
CH272	414742.10N / 1404311.31E		
CH056	414352.33N / 1403822.94E		

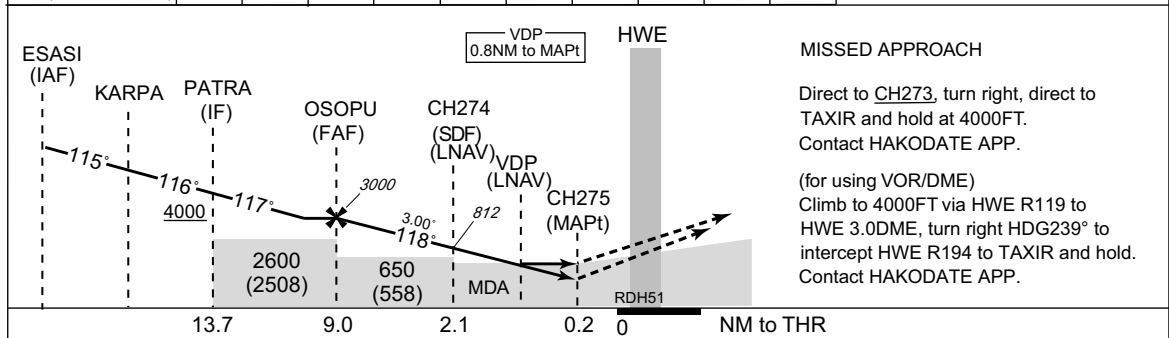
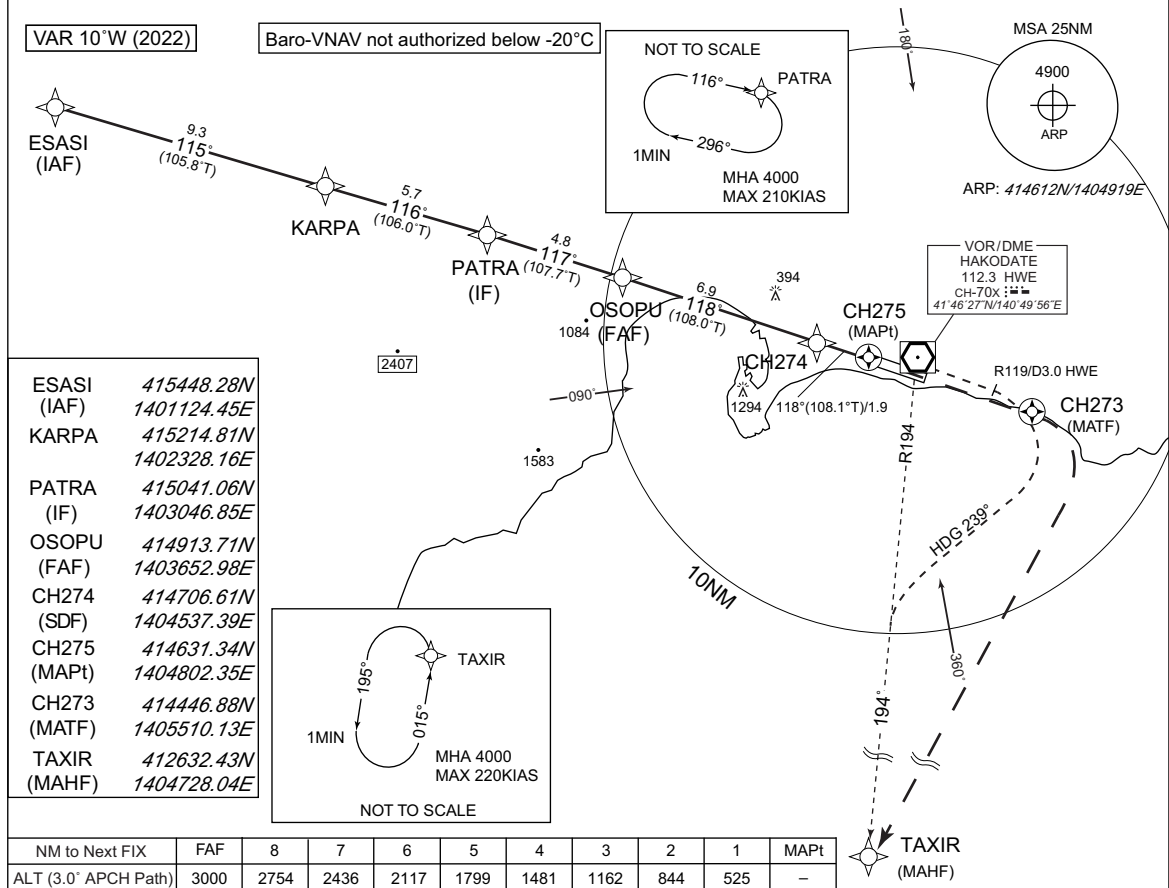
CHANGE : VAR: Course FM RW30 to CH272. RNAV HLDG established (TAXIR).

INSTRUMENT APPROACH CHART

RJCH / HAKODATE

RNP Z RWY12

<b>HAKODATE APP</b> 119.0 – 121.0 127.9	<b>RNP APCH</b> MSAS CH 83680 M12A	<b>HAKODATE TOWER</b> 118.35 – 126.2	<b>RADAR AVBL</b> ATIS 126.6
---	--	---	---------------------------------



Missed APCH climb gradient MNM 5.0%

<b>MINIMA</b>		<b>THR elev.92</b>				<b>AD elev.112</b>			
CAT	LPV		LNAV/VNAV		LNAV		CIRCLING		
	DA(H)	RVR/CMV	DA(H)	RVR/CMV	MDA(H)	RVR/CMV	MDA(H)      VIS		
A	353(261)	1000	460(368)	1200	460(368)	1200	550(438)	1600	
B	363(271)	1100		1300		1300	570(458)		
C	373(281)	1200		1400		1400	600(488)		2400
D	382(290)	1400		1600		1600	690(578)		3200

CHANGE : New PROC.

Circling to SOUTH side of RWY only.  
MINIMA with Missed APCH climb gradient of 2.5% are not established.

INSTRUMENT APPROACH CHART

RJCH / HAKODATE

RNP Z RWY12

**FAS DATA BLOCK**

Operation type	0	LTP/FTP ellipsoidal height	+00625
SBAS service provider identifier	2	FPAP latitude	414557.5735N
Airport identifier	RJCH	FPAP longitude	1405021.1555E
Runway	12	Threshold crossing height	00015.5
Approach performance designator	0	TCH units selector	1
Route indicator	Z	Glide path angle	03.00
Reference path data selector	0	Course width at threshold	105.00
Reference path ID	M12A	∟ length offset	0000
LTP/FTP latitude	414627.5895N	HAL	40.0
LTP/FTP longitude	1404817.5995E	VAL	50.0
CRC remainder	69B323C3		

**Required additional data**

LTP/FTP orthometric height	28.1
----------------------------	------

CHANGE : Description of FAS DATA BLOCK ITEM(CRC remainder).

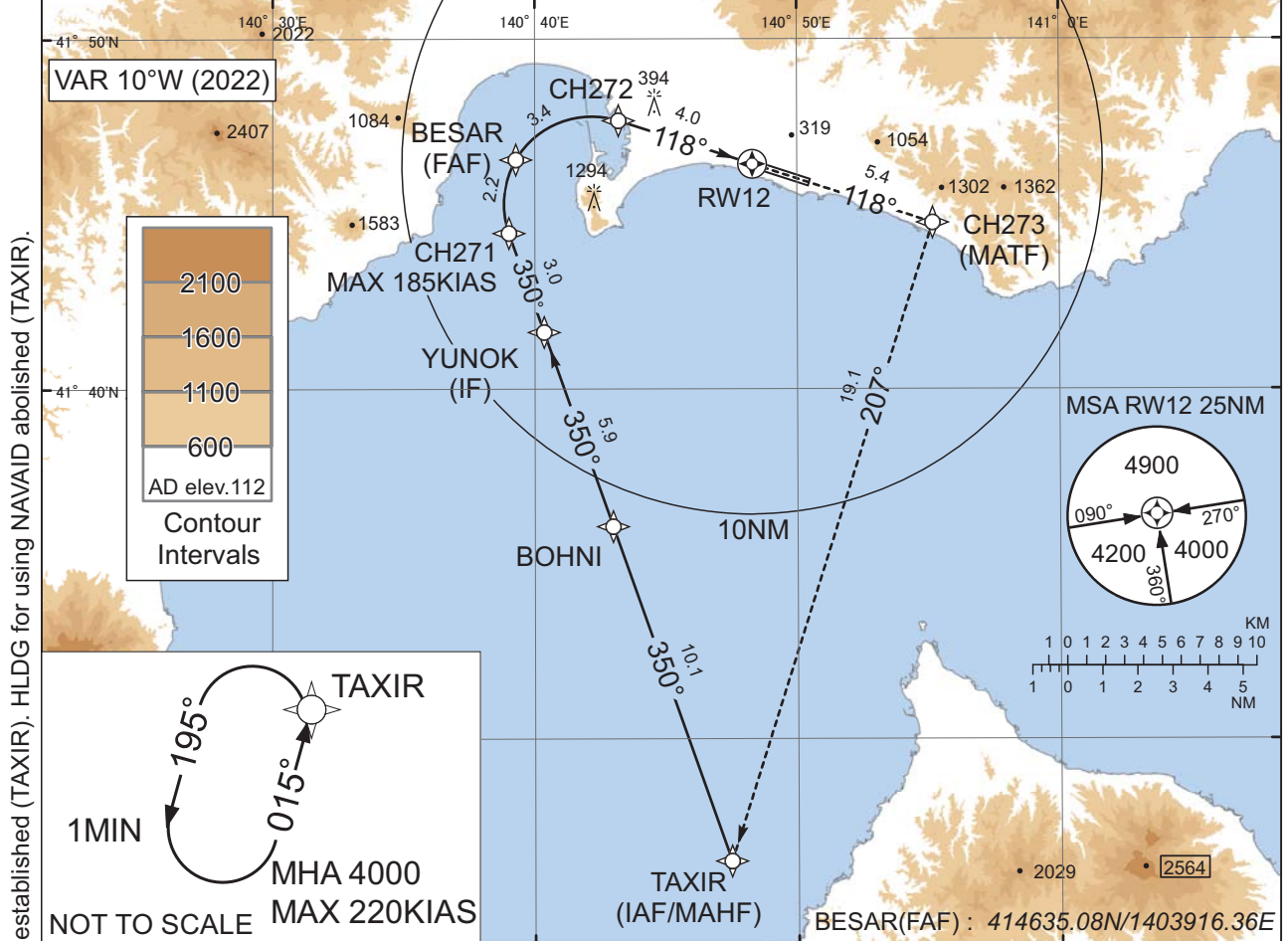
INSTRUMENT APPROACH CHART

RJCH / HAKODATE

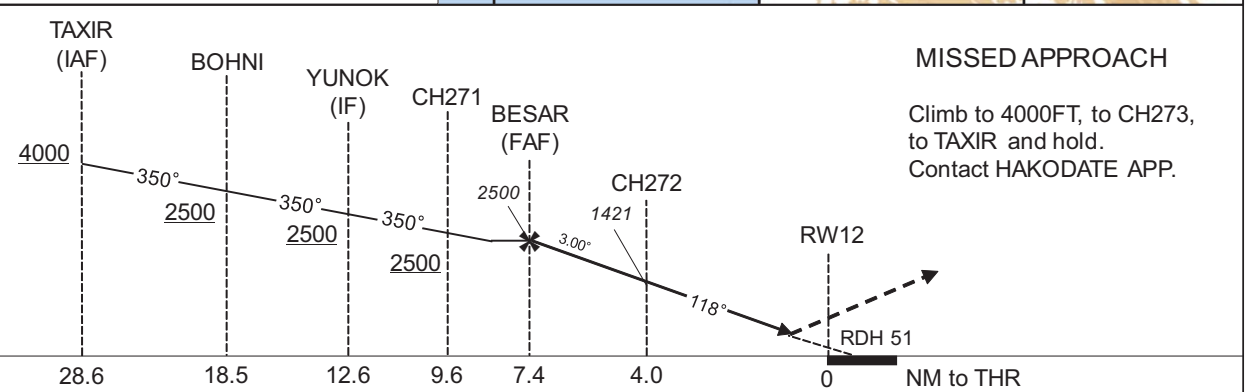
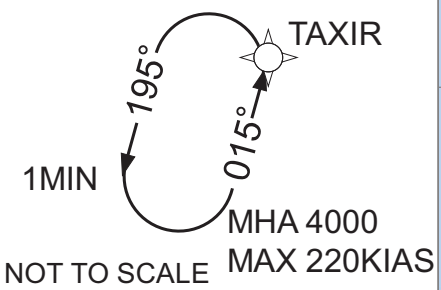
RNP Y RWY12(AR)

HAKODATE APP 119.0 - 121.0 127.9	RNP AR RF required.	HAKODATE TWR 118.35 - 126.2	RADAR AVBL ATIS 126.6
--	------------------------	--------------------------------	--------------------------

For uncompensated Baro-VNAV systems, procedure not authorized below -20°C / above 45°C



CHANGE : VAR. PROC renamed. PROC course. RNAV HLDG established (TAXIR). HLDG for using NAVAID abolished (TAXIR).



Missed APCH climb gradient MNM 5.0%

MINIMA	THR elev. 92	AD elev. 112
CAT	RNP 0.30	
	DA(H)	RVR/CMV
A	-	-
B	-	-
C	402(310)	1400
D	423(331)	1600

MINIMA with Missed APCH climb gradient of 2.5% are not established.

**Authorization Required**



INSTRUMENT APPROACH CHART

RJCH / HAKODATE

RNP Y RWY12(AR)

Coding Table

Serial Number	Path Descriptor	Waypoint Identifier	Fly Over	Course °M(°T)	Magnetic Variation	Distance (NM)	Turn Direction	Altitude (FT)	Speed (KIAS)	VPA/RDH (°/FT)	RNP Value
001	IF	TAXIR	-	-	-9.6	-	-	+4000	-	-	-
002	TF	BOHNI	-	350 (340.6)	-9.6	10.1	-	+2500	-	-	1.0
003	TF	YUNOK	-	350 (340.6)	-9.6	5.9	-	+2500	-	-	1.0
004	TF	CH271	-	350 (340.5)	-9.6	3.0	-	+2500	-185	-	1.0
005	RF Center: CHRF5 r=2.50NM	BESAR	-	-	-9.6	2.2	R	2500	-	-	1.0
006	RF Center: CHRF5 r=2.50NM	CH272	-	-	-9.6	3.4	R	1421	-	-3.00	0.3
007	TF	RW12	Y	118 (108.0)	-9.6	4.0	-	143	-	-3.00/51	0.3
008	TF	CH273	-	118 (108.1)	-9.6	5.4	-	-	-	-	1.0
009	TF	TAXIR	-	207 (197.6)	-9.6	19.1	-	4000	-	-	1.0

Path	Waypoint Identifier	Inbound Course °M(°T)	Magnetic Variation	Outbound Time (MIN)	Turn Direction	Minimum Altitude (FT)	Maximum Altitude (FT)	Speed (KIAS)	RNP Value
Hold	TAXIR	015 (005.3)	-9.6	1.0 (-14000)	L	4000	FL140	-220 (-14000)	1.0

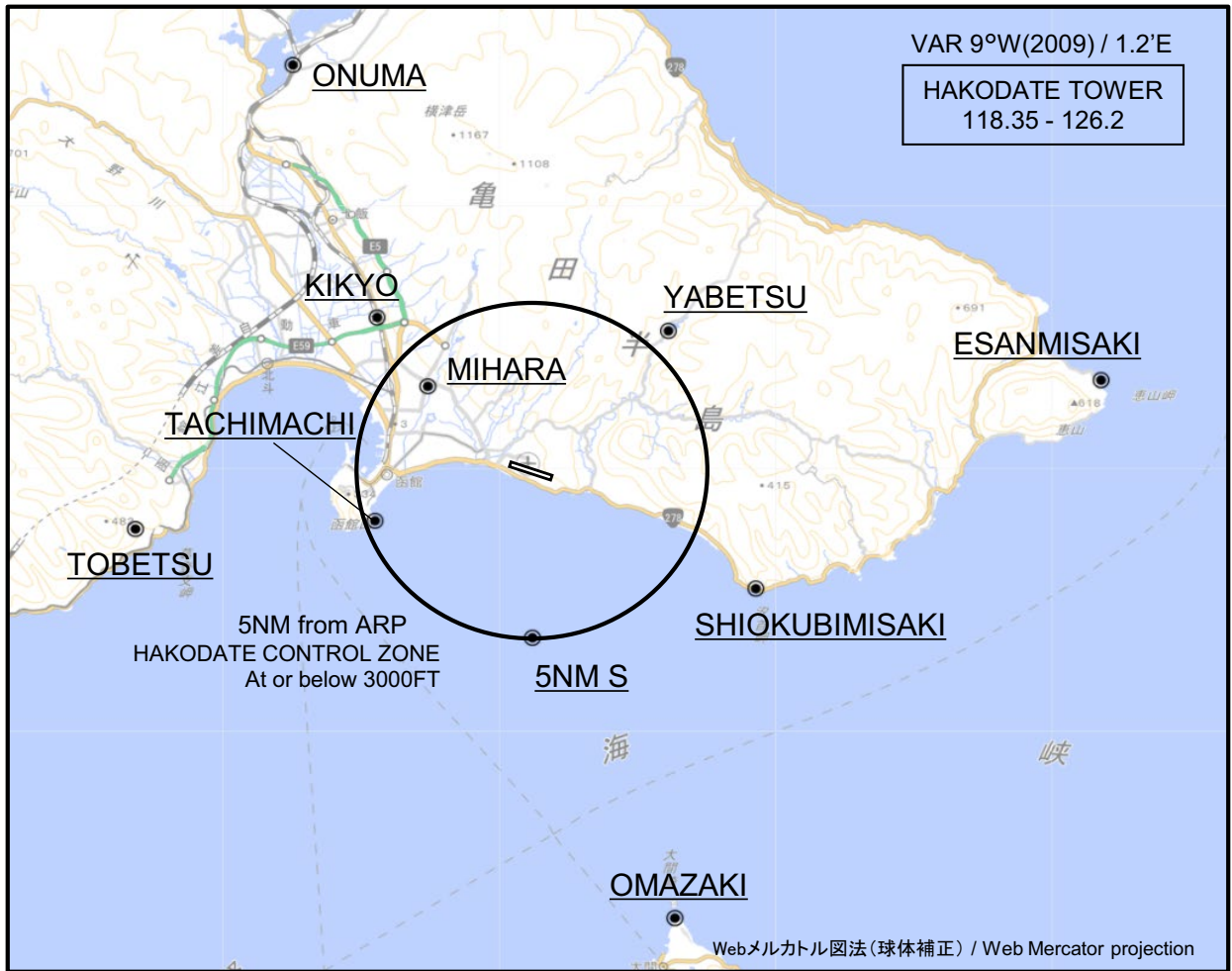
Waypoint Coordinates

Waypoint Identifier	Coordinates	RF Arc Center Identifier	Coordinates
TAXIR	412632.43N / 1404728.04E	CHRF5	414519.29N / 1404209.46E
BOHNI	413606.23N / 1404258.19E		
YUNOK	414139.34N / 1404020.87E		
CH271	414429.13N / 1403900.50E		
BESAR	414635.08N / 1403916.36E		
CH272	414742.10N / 1404311.31E		
RW12	414627.62N / 1404817.61E		
CH273	414446.88N / 1405510.13E		

CHANGE : VAR. PROC renamed. PROC course. RNAV HLDG established (TAXIR).

RJCH / HAKODATE

Visual REP

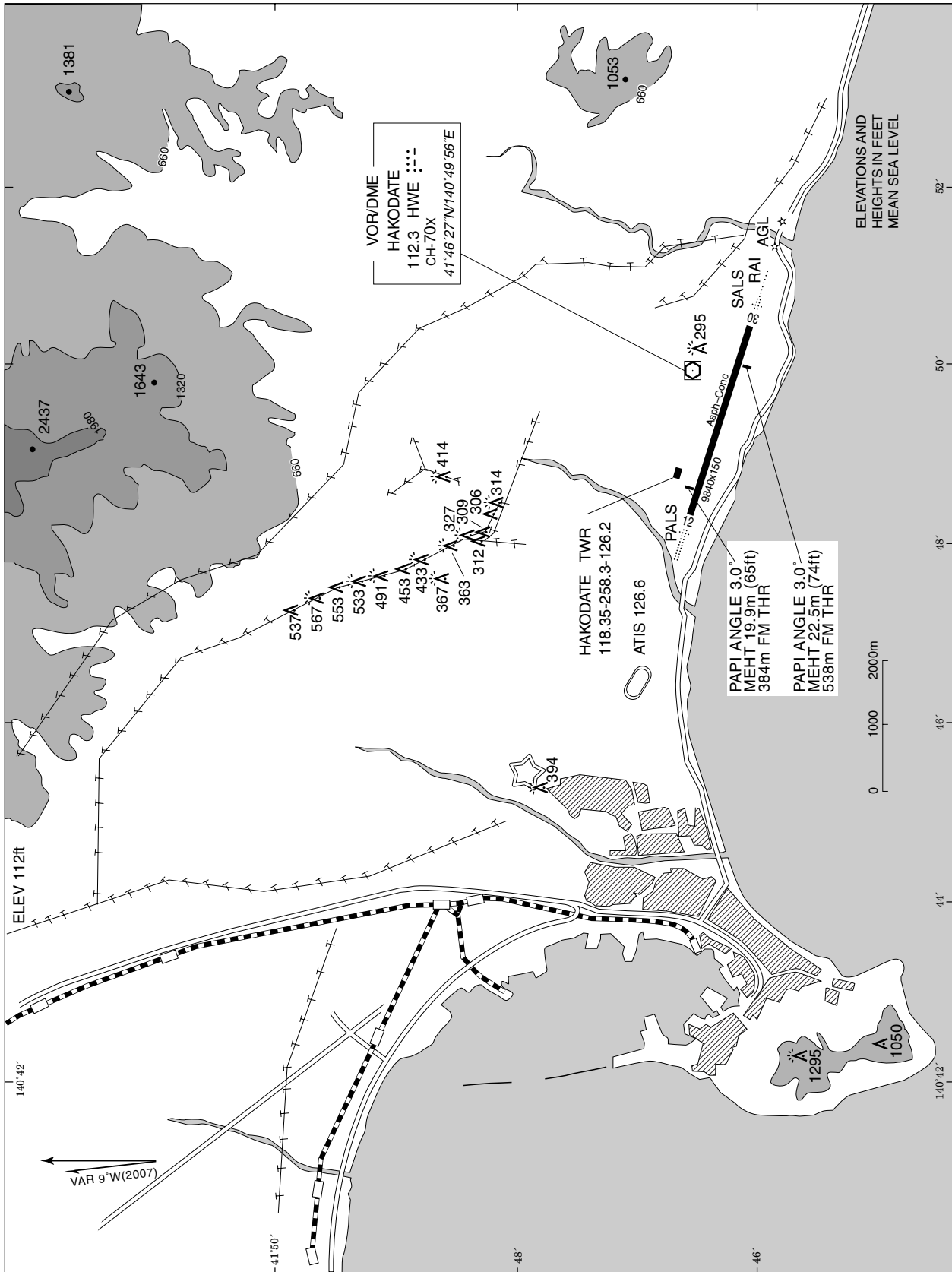


※図中に標高を示す数字がある場合、単位はメートル(m)である。The unit of measurement used to express elevation is meter(m).

CHANGE :DIST from ARP(Mihara):

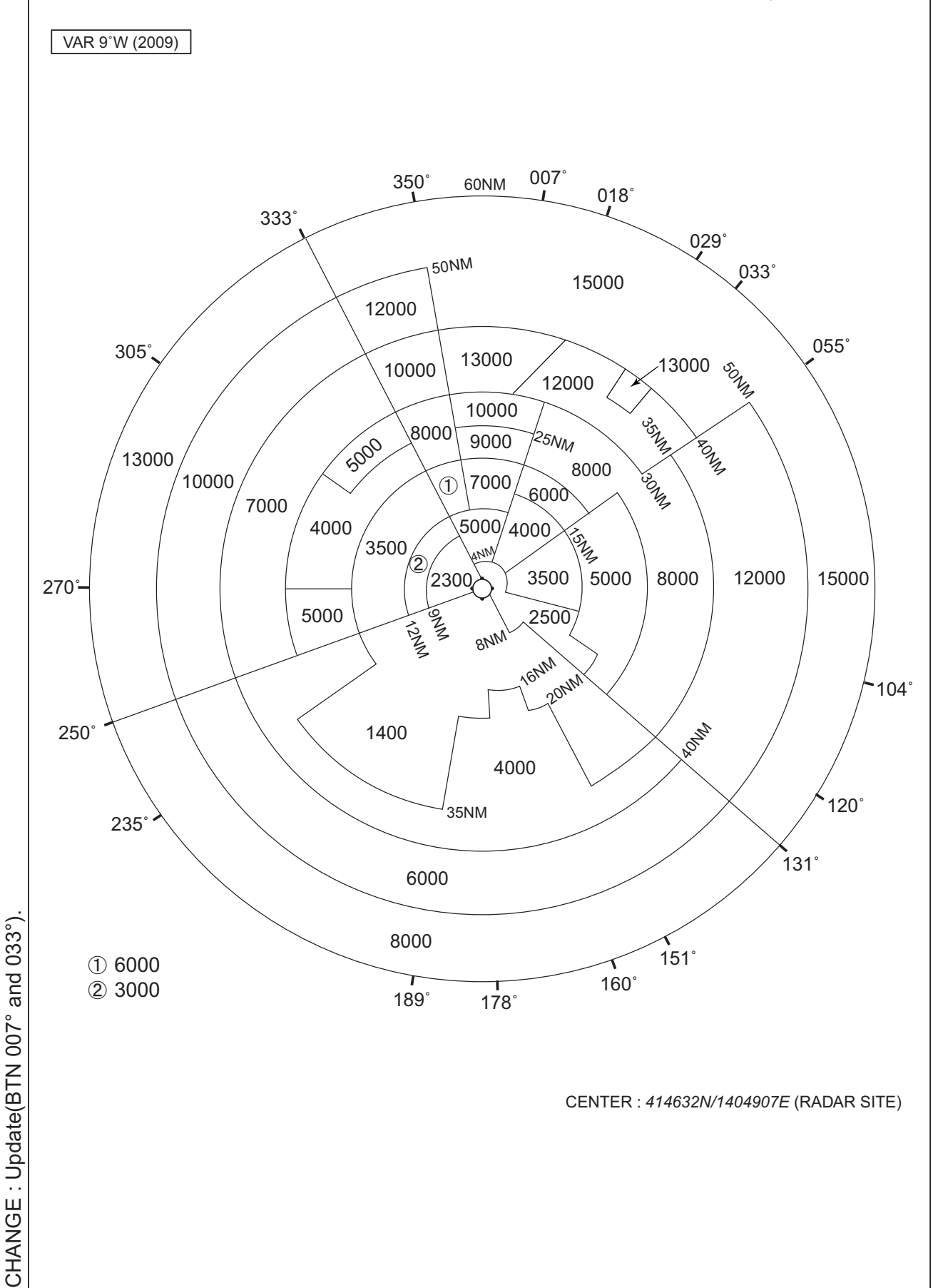
Call sign	BRG / DIST from ARP	Remarks
大沼 Onuma	330°T / 13.9NM	JR駅 JR Station
桔梗 Kikyo	316°T / 6.4NM	JR駅 JR Station
矢別 Yabetsu	043°T / 5.7NM	ダム Dam
恵山岬 Esanmisaki	081°T / 16.5NM	灯台 Lighthouse
美原 Mihara	310°T / 3.9NM	NHKラジオアンテナ NHK radio antenna
立待 Tachimachi	252°T / 4.8NM	岬 Cape
当別 Tobetsu	261°T / 11.5NM	トラピスト修道院 Religious house
汐首岬 Shiokubimisaki	119°T / 7.3NM	灯台 Lighthouse
5NM S	180°T / 5.0NM	海上 Over the sea
大間崎 Omazaki	163°T / 14.0NM	岬 Cape

LDG CHART



RJCH / HAKODATE

Minimum Vectoring Altitude CHART



**INTENTIONALLY LEFT BLANK**