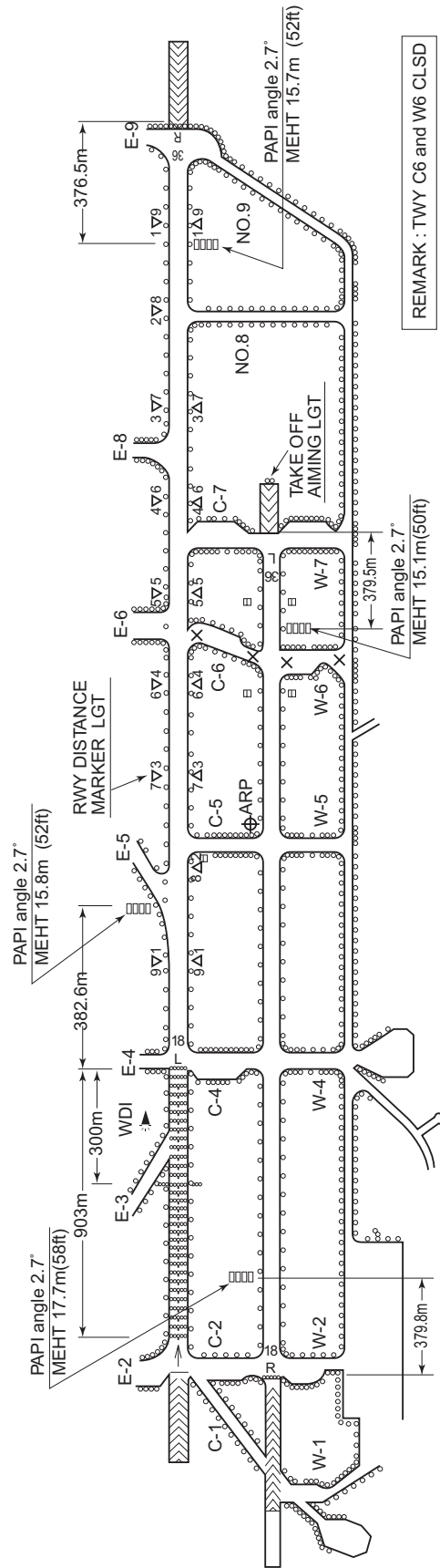


RJCJ / CHITOSE

AD CHART

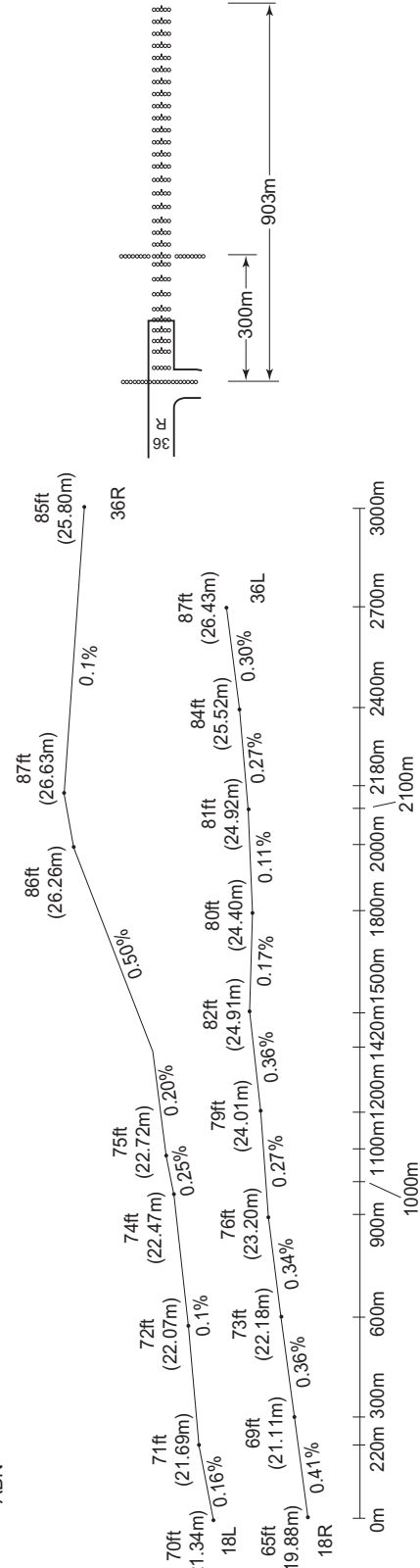
CHANGE : OVERRUN AREA EDGE LGT deleted.

CHITOSE AD



REMARK : TWY C6 and W6 CLSD

LONGITUDINAL PROFILE OF RWY



INTENTIONALLY LEFT BLANK

STANDARD DEPARTURE CHART-INSTRUMENT

RJCJ / CHITOSE

SID

TOKACHI ONE DEPARTURE

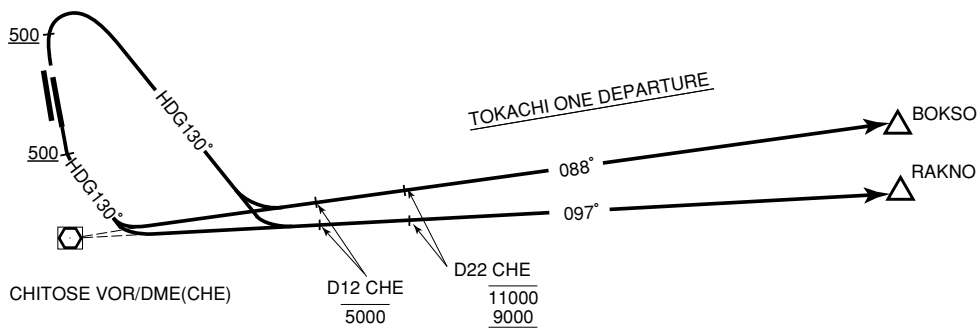
RWY 36R/36L : Climb via RWY HDG to 500ft or above, turn right climb via HDG 130 DEG to intercept and proceed via....

RWY 18R/18L : Climb via RWY HDG to 500ft or above, turn left climb via HDG 130 DEG to intercept and proceed via....

...CHE R-088 to BOKSO or CHE R-097 to RAKNO.

Cross CHE R-088/12DME or CHE R-097/12DME at or below 5,000ft.

Cross CHE R-088/22DME or CHE R-097/22DME between 9,000ft and 11,000ft.



STANDARD DEPARTURE CHART-INSTRUMENT

RJCJ / CHITOSE

SID

TOBBY SEVEN DEPARTURE

RWY 36R/36L : Climb via RWY HDG to 500ft or above, turn right to CHE VOR/DME within CHE 10DME (5NM FM RWY end), then via CHE R-185 to TOBBY.

Cross 4DME prior to CHE VOR/DME (MKE R-329) at or above 3,000ft.

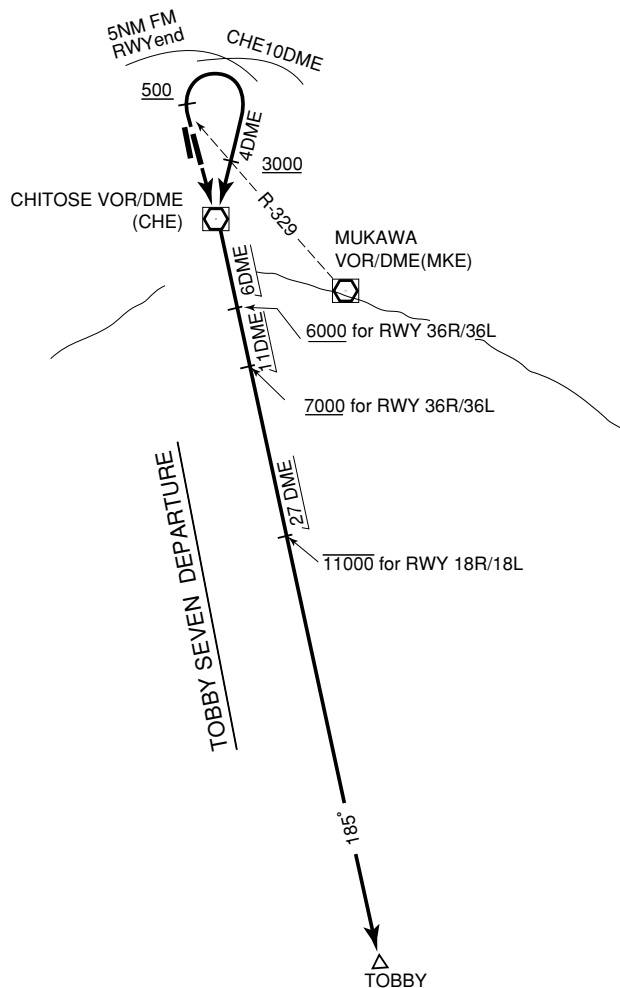
Cross CHE R-185/6DME at or above 6,000ft.

Cross CHE R-185/11DME at or above 7,000ft.

RWY 18R/18L : Climb direct to CHE VOR/DME, then via CHE R-185 to TOBBY.

Cross CHE R-185/27DME at or below 11,000ft.

Note : Aircraft unable to comply with the flight restriction, inform ATC for alternate procedure before departure.



STANDARD DEPARTURE CHART-INSTRUMENT

RJCJ / CHITOSE

SID

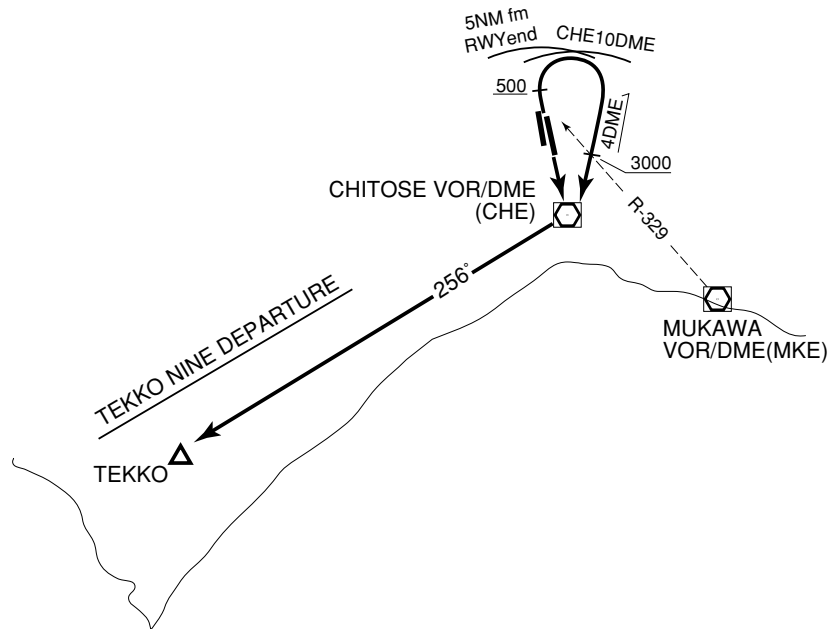
TEKKO NINE DEPARTURE

RWY 36R/36L : Climb via RWY HDG to 500ft or above, turn right to CHE VOR/DME within CHE 10DME (5NM FM RWY end).

Cross 4DME prior to CHE VOR/DME (MKE R-329) at or above 3,000ft....

RWY 18R/18L : Climb direct to CHE VOR/DME....

....Turn right via CHE R-256 to TEKKO.



STANDARD DEPARTURE CHART-INSTRUMENT

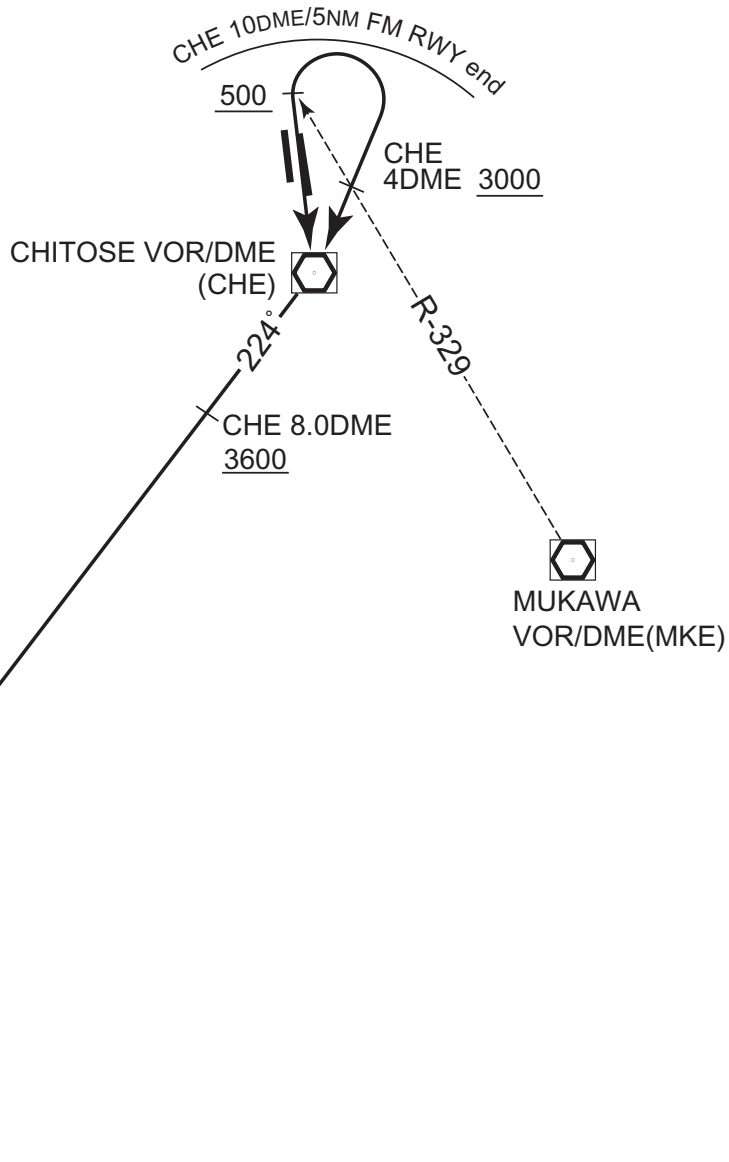
RJCJ / CHITOSE

SID

HAKODATE FIVE DEPARTURE

- RWY 36R/36L : Climb via RWY HDG to 500ft or above, turn right to CHE VOR/DME within CHE 10DME (5NM FM RWY end).
Cross 4DME prior to CHE VOR/DME (MKE R-329) at or above 3,000ft....
- RWY 18R/18L : Climb direct to CHE VOR/DME....
....then via CHE R-224 to HWE VOR/DME.
Cross CHE R-224/8.0DME at or above 3,600ft.

HAKODATE FIVE DEPARTURE



CHANGE : PROC renamed. ALT restriction added.

STANDARD DEPARTURE CHART-INSTRUMENT

RJCJ / CHITOSE

SID

CHITOSE REVERSAL THREE DEPARTURE

RWY 18L/18R : Climb RWY HDG to 600FT, turn left HDG 046° to intercept and proceed via ZYT R091 to 20.0DME, turn left, direct to ZYT TACAN.

Cross ZYT R091/15.0DME at or below 11000FT.

RWY 36R/36L : Climb via ZYT R360 to 15.0DME, turn right, direct to ZYT TACAN.

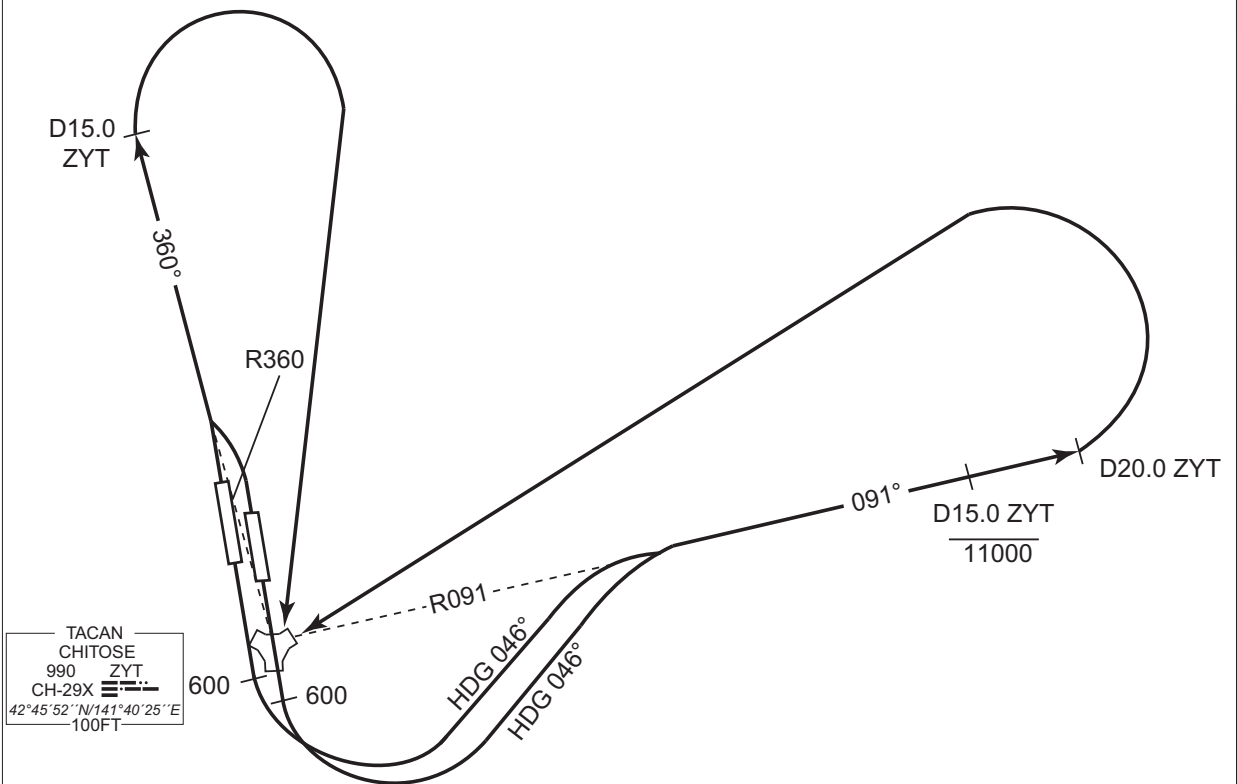
Note RWY18L : 5.0% climb gradient required up to 600FT.

OBST ALT 172FT located at 0.3NM 155° FM end of RWY18L.

RWY18R : 5.0% climb gradient required up to 600FT.

OBST ALT 197FT located at 0.6NM 205° FM end of RWY18R.

CHANGE : PROC renamed. PROC course. Note(OBST). ALT restriction. Specified ALT deleted.



STANDARD DEPARTURE CHART-INSTRUMENT

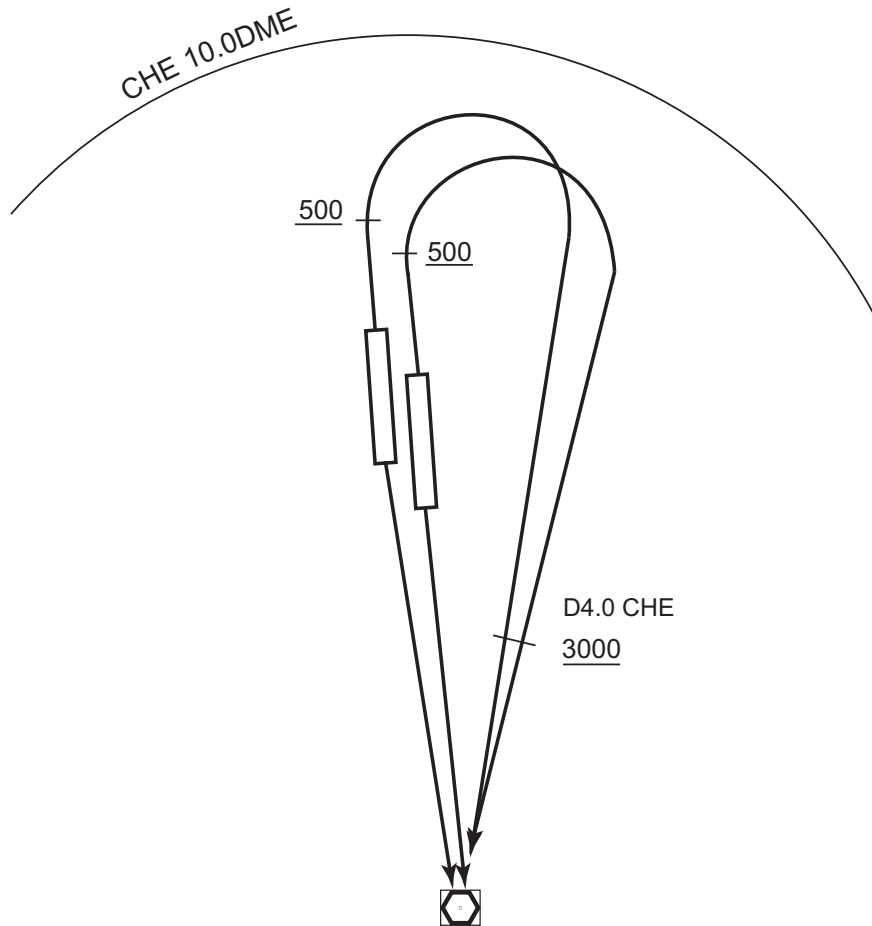
RJCJ / CHITOSE

SID

CHITOSE FOUR DEPARTURE

RWY 18L/18R : Climb direct to CHE VOR/DME.

RWY 36R/36L : Climb via RWY HDG to 500FT or above, turn right to CHE VOR/DME within CHE 10.0DME.
Cross 4.0DME prior to CHE VOR/DME at or above 3000FT.



VOR/DME	
CHITOSE	
116.9	CHE
CH-116X	⋯⋯⋯
42°42'00"N/141°41'10"E	
100FT	

CHANGE : PROC renamed. PROC course. CHITOSE TACAN deleted. Note deleted.

STANDARD DEPARTURE CHART-INSTRUMENT

RJCJ / CHITOSE

SID

MUKAWA FIVE DEPARTURE

RWY 36R/36L: Climb via RWY HDG to 500ft or above, turn right within 4NM, climb via MKE R-336 to MKE VOR/DME, then via MKE R-202 to TOBBY.

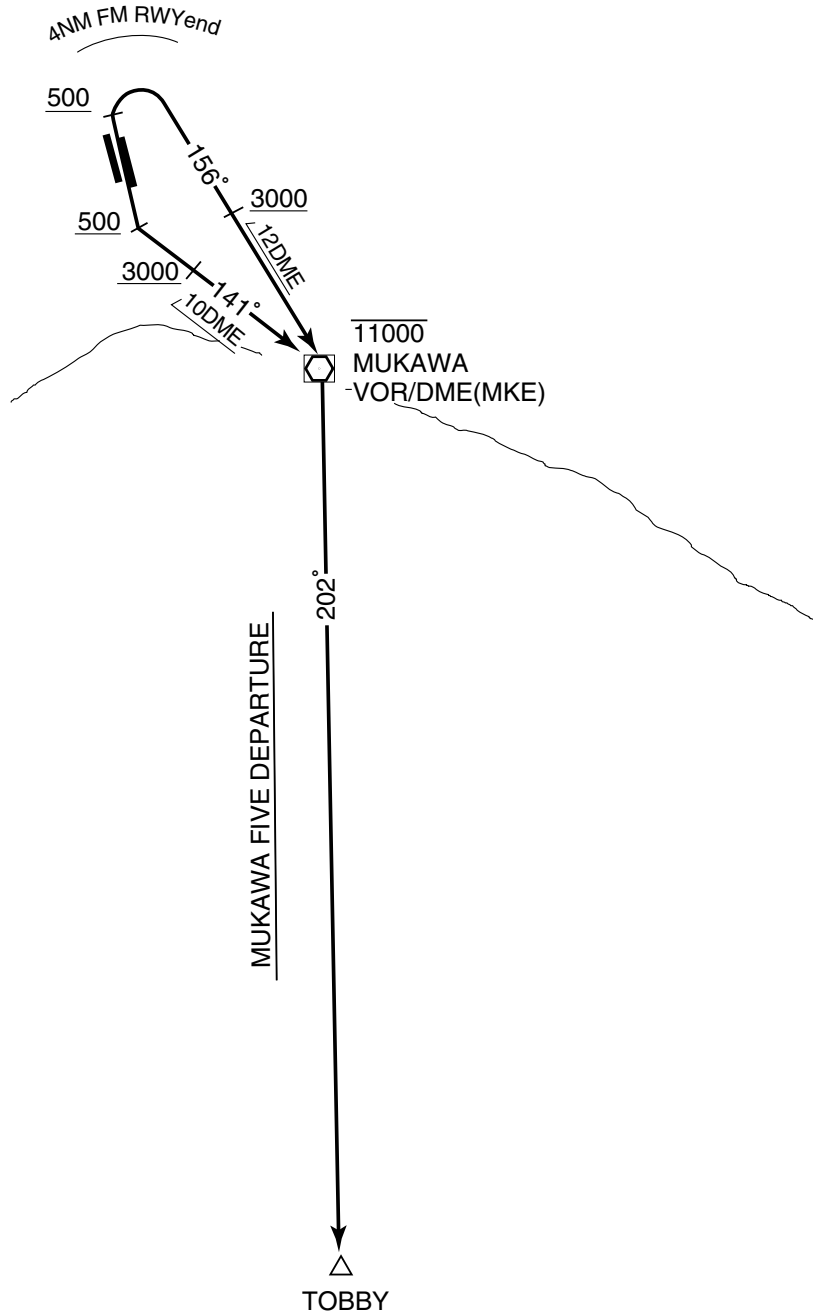
Cross MKE R-336/12DME at or above 3,000ft.

Cross MKE VOR/DME at or below 11,000ft.

RWY 18R/18L: Climb via RWY HDG to 500ft or above, turn left, climb via MKE R-321 to MKE VOR/DME, then via MKE R-202 to TOBBY.

Cross MKE R-321/10DME at or above 3,000ft.

Corss MKE VOR/DME at or below 11,000ft.



STANDARD DEPARTURE CHART-INSTRUMENT

RJCJ / CHITOSE

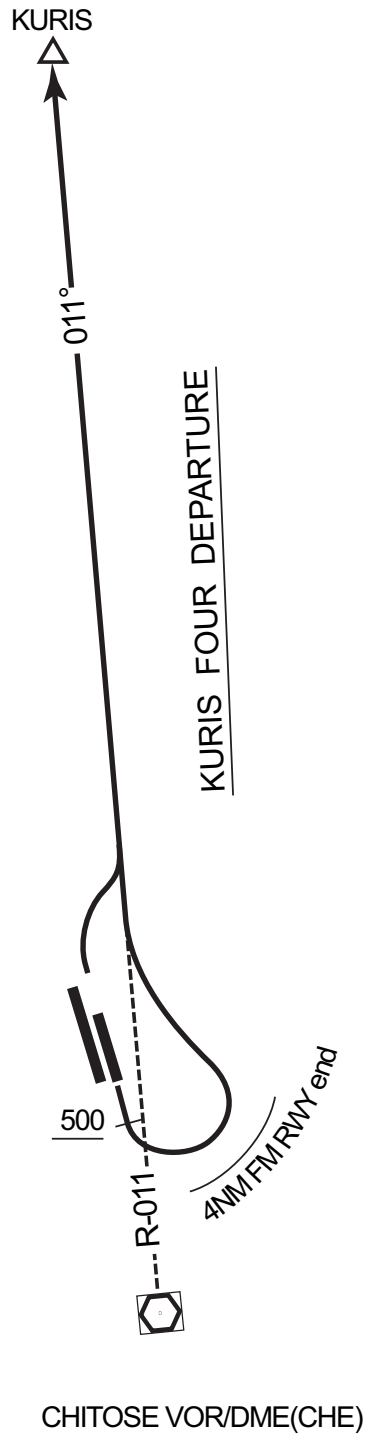
SID

KURIS FOUR DEPARTURE

RWY 36R/36L:

RWY 18R/18L: Climb via RWY HDG to 500ft or above, turn left within 4NM,...

....climb via CHE R-011 to KURIS.



STANDARD DEPARTURE CHART-INSTRUMENT

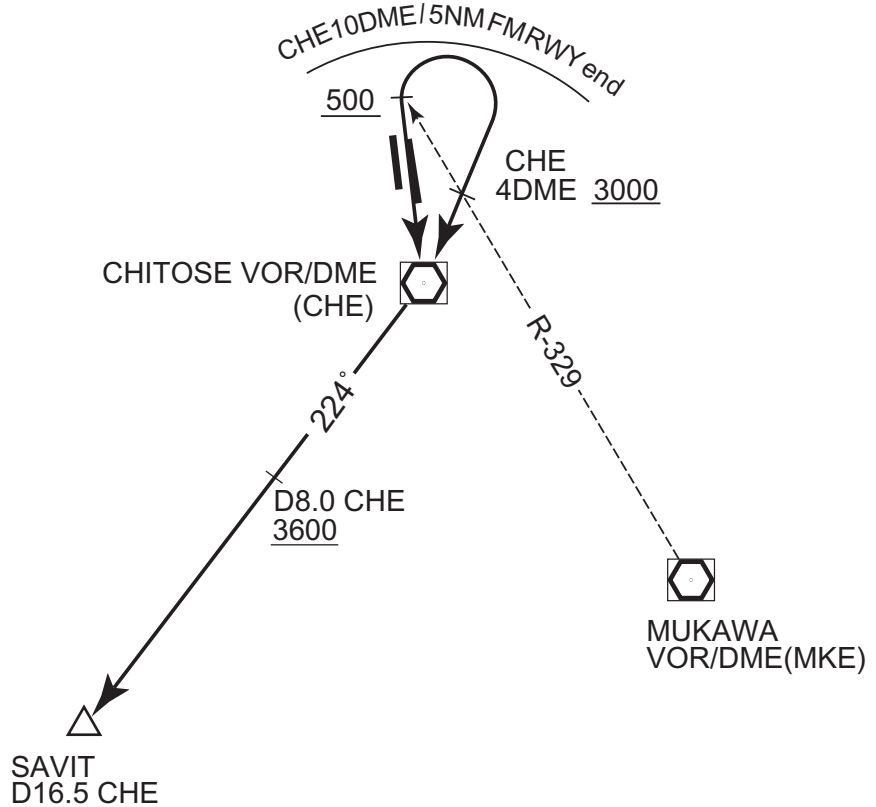
RJCJ / CHITOSE

SID

SAVIT TWO DEPARTURE

- RWY 36R/36L : Climb via RWY HDG to 500ft or above, turn right to CHE VOR/DME within CHE 10DME (5NM FM RWY end).
Cross 4DME prior to CHE VOR/DME (MKE R-329) at or above 3,000ft....
- RWY 18R/18L : Climb direct to CHE VOR/DME....
....then via CHE R-224 to SAVIT.
Cross CHE R-224/8.0DME at or above 3,600ft.

SAVIT TWO DEPARTURE



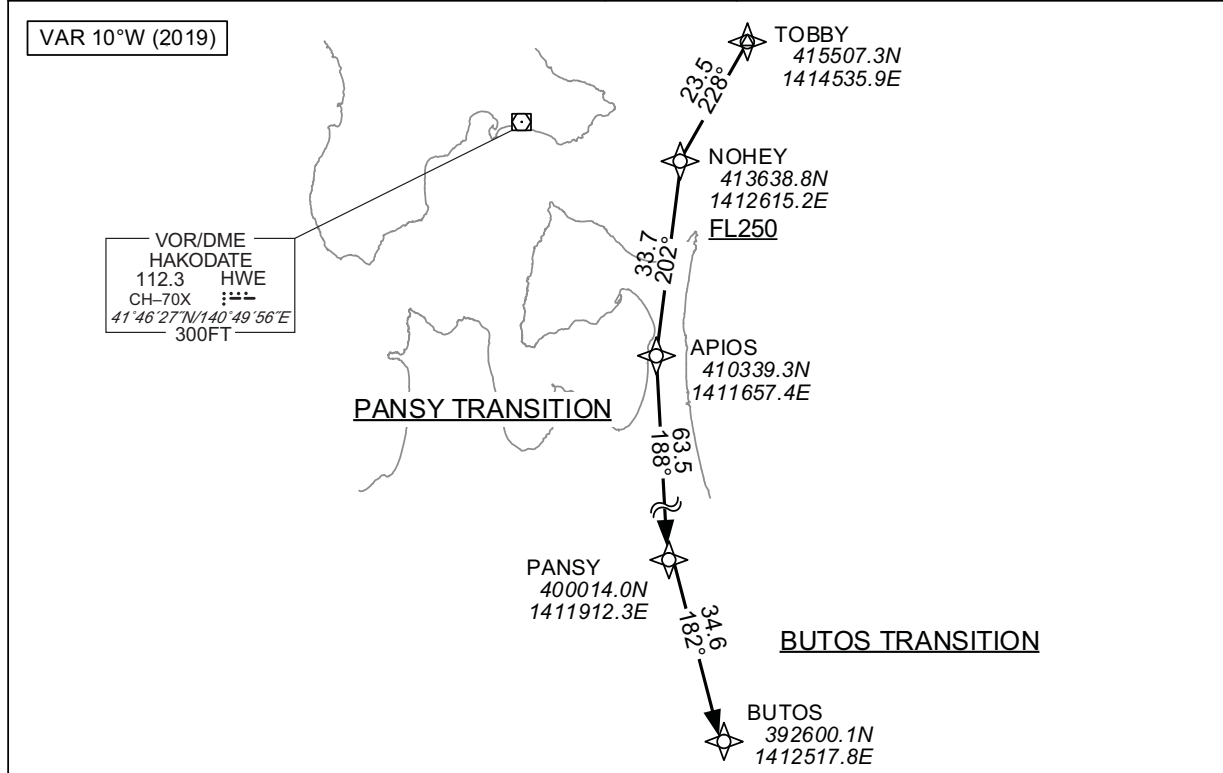
CHANGE : PROC renamed. ALT restriction added.

STANDARD DEPARTURE CHART-INSTRUMENT

RJCJ / CHITOSE

RNAV TRANSITION

PANSY TRANSITION/BUTOS TRANSITION		RNAV 1
Note 1) DME/DME/IRU or GNSS required. 2) RADAR service required.	Critical DME	-
	DME GAP	-
	Inappropriate Nav aids	See AD1.1.6.10.3 Inappropriate NAV AIDs for RNAV1



PANSY TRANSITION

From TOBBY, to NOHEY at or above FL250, to APIOS, to PANSY.

Serial Number	Path Descriptor	Waypoint Identifier	Fly Over	Course °M(°T)	Magnetic Variation	Distance (NM)	Turn Direction	Altitude (FT)	Speed (KIAS)	Vertical Angle	Navigation Specification
001	IF	TOBBY	-	-	-9.5	-	-	-	-	-	RNAV1
002	TF	NOHEY	-	228 (218.1)	-9.5	23.5	-	+FL250	-	-	RNAV1
003	TF	APIOS	-	202 (192.0)	-9.5	33.7	-	-	-	-	RNAV1
004	TF	PANSY	-	188 (178.4)	-9.5	63.5	-	-	-	-	RNAV1

BUTOS TRANSITION

From TOBBY, to NOHEY at or above FL250, to APIOS, to PANSY, to BUTOS.

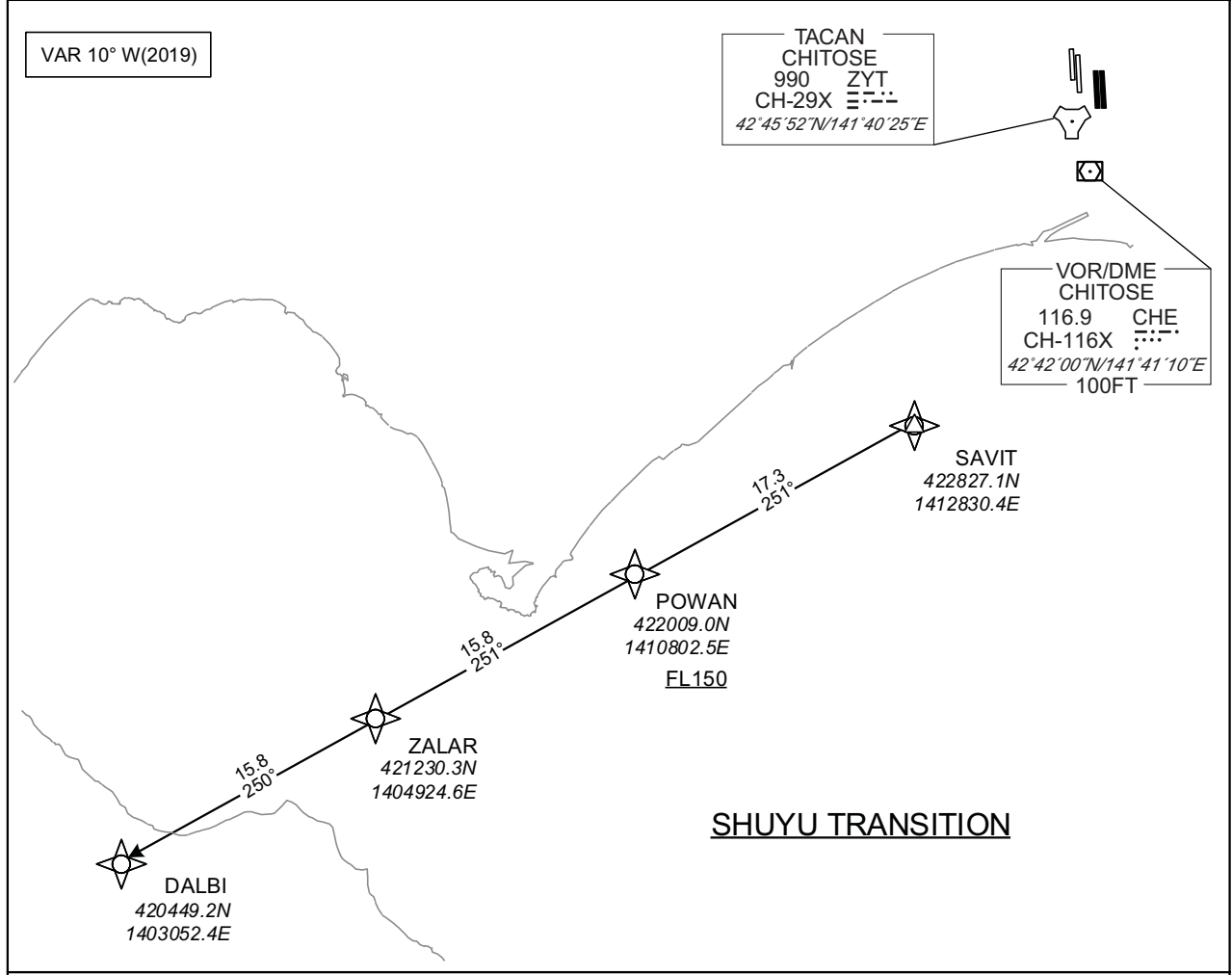
Serial Number	Path Descriptor	Waypoint Identifier	Fly Over	Course °M(°T)	Magnetic Variation	Distance (NM)	Turn Direction	Altitude (FT)	Speed (KIAS)	Vertical Angle	Navigation Specification
001	IF	TOBBY	-	-	-9.5	-	-	-	-	-	RNAV1
002	TF	NOHEY	-	228 (218.1)	-9.5	23.5	-	+FL250	-	-	RNAV1
003	TF	APIOS	-	202 (192.0)	-9.5	33.7	-	-	-	-	RNAV1
004	TF	PANSY	-	188 (178.4)	-9.5	63.5	-	-	-	-	RNAV1
005	TF	BUTOS	-	182 (172.2)	-9.5	34.6	-	-	-	-	RNAV1

STANDARD DEPARTURE CHART-INSTRUMENT

RJCJ / CHITOSE

RNAV TRANSITION

SHUYU TRANSITION		RNAV1
Note 1) DME/DME/IRU or GNSS required. 2) RADAR service required.	Critical DME	-
	DME GAP	-
	Inappropriate Nav aids	See AD1.1.6.10.3. Inappropriate NAVAIDs for RNAV1



SHUYU TRANSITION

From SAVIT, to POWAN at or above FL150, to ZALAR, to DALBI.

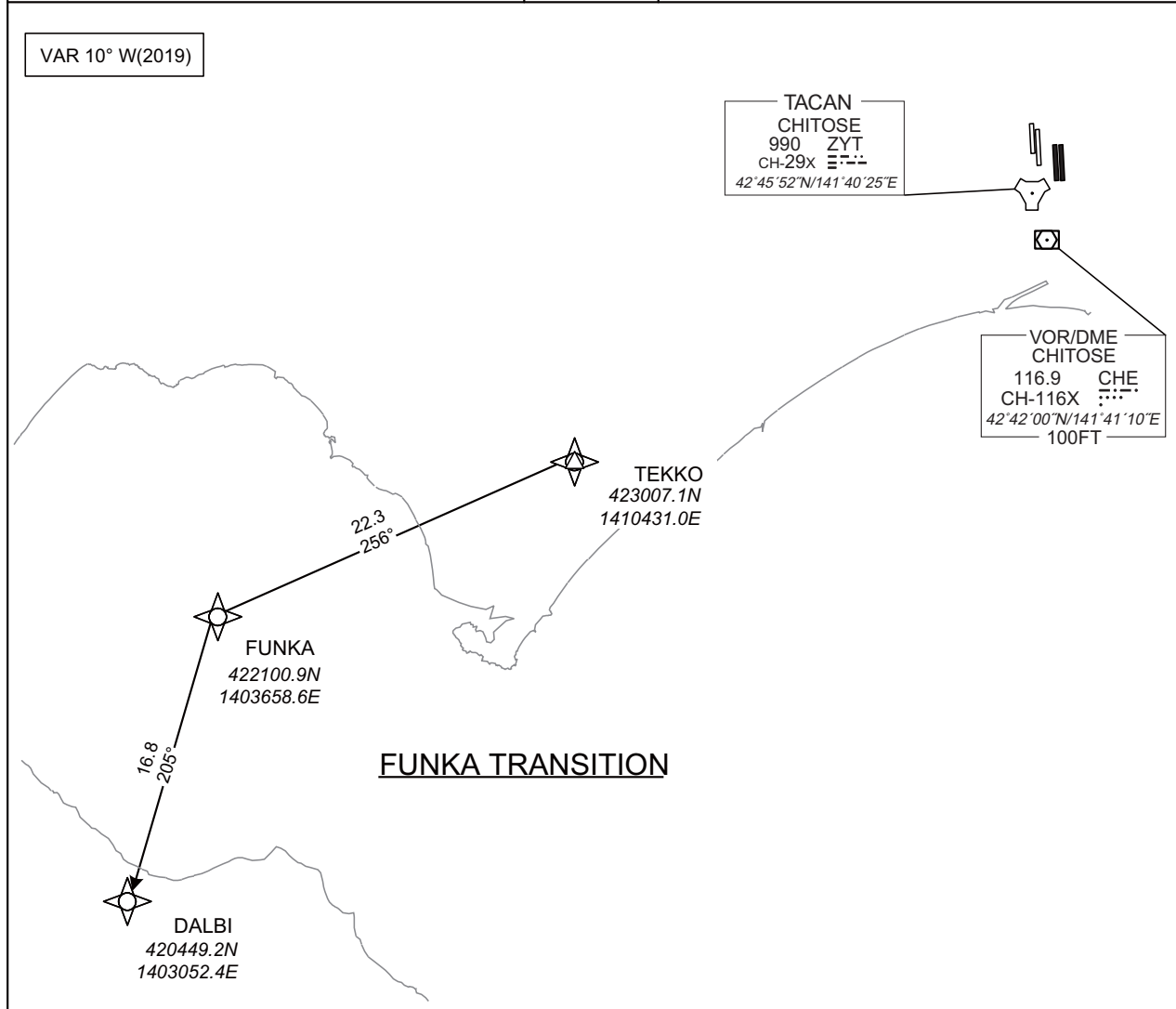
Serial Number	Path Descriptor	Waypoint Identifier	Fly Over	Course °M(°T)	Magnetic Variation	Distance (NM)	Turn Direction	Altitude (FT)	Speed (KIAS)	Vertical Angle	Navigation Specification
001	IF	SAVIT	-	-	-9.5	-	-	-	-	-	RNAV1
002	TF	POWAN	-	251 (241.3)	-9.5	17.3	-	+FL150	-	-	RNAV1
003	TF	ZALAR	-	251 (241.1)	-9.5	15.8	-	-	-	-	RNAV1
004	TF	DALBI	-	250 (240.9)	-9.5	15.8	-	-	-	-	RNAV1

STANDARD DEPARTURE CHART-INSTRUMENT

RJCJ / CHITOSE

RNAV TRANSITION

FUNKA TRANSITION		RNAV1
Note 1) DME/DME/IRU or GNSS required. 2) RADAR service required.	Critical DME	MRE : 12.0NM to FUNKA - FUNKA
	DME GAP	-
	Inappropriate Nav aids	See AD1.1.6.10.3. Inappropriate NAVAIDs for RNAV1



FUNKA TRANSITION

From TEKKO, to FUNKA, to DALBI.

Serial Number	Path Descriptor	Waypoint Identifier	Fly Over	Course °M(°T)	Magnetic Variation	Distance (NM)	Turn Direction	Altitude (FT)	Speed (KIAS)	Vertical Angle	Navigation Specification
001	IF	TEKKO	-	-	-9.5	-	-	-	-	-	RNAV1
002	TF	FUNKA	-	256 (246.0)	-9.5	22.3	-	-	-	-	RNAV1
003	TF	DALBI	-	205 (195.6)	-9.5	16.8	-	-	-	-	RNAV1

STANDARD ARRIVAL CHART-INSTRUMENT

RJCJ / CHITOSE

STAR

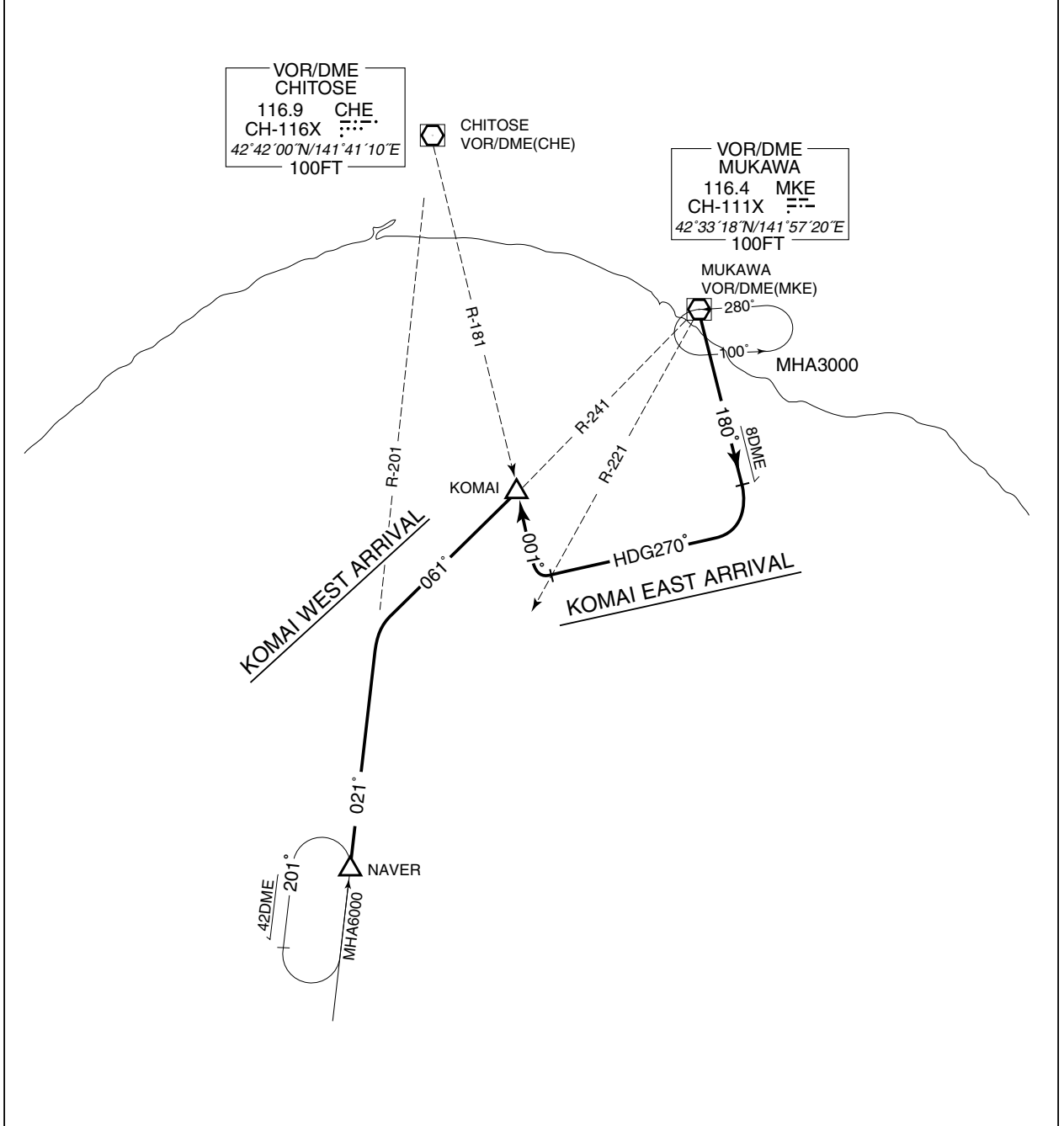
STARs for RWY36

KOMAI WEST ARRIVAL

From over NAVER, via CHE R-201 to intercept and proceed via MKE R-241 to KOMAI.

KOMAI EAST ARRIVAL

From over MKE VOR/DME, via MKE R-180 to MKE R-180/8DME, turn right, proceed via HDG 270 DEG to intercept MKE R-221, then turn right to intercept CHE R-181 to KOMAI.



STANDARD ARRIVAL CHART-INSTRUMENT

RJCJ / CHITOSE

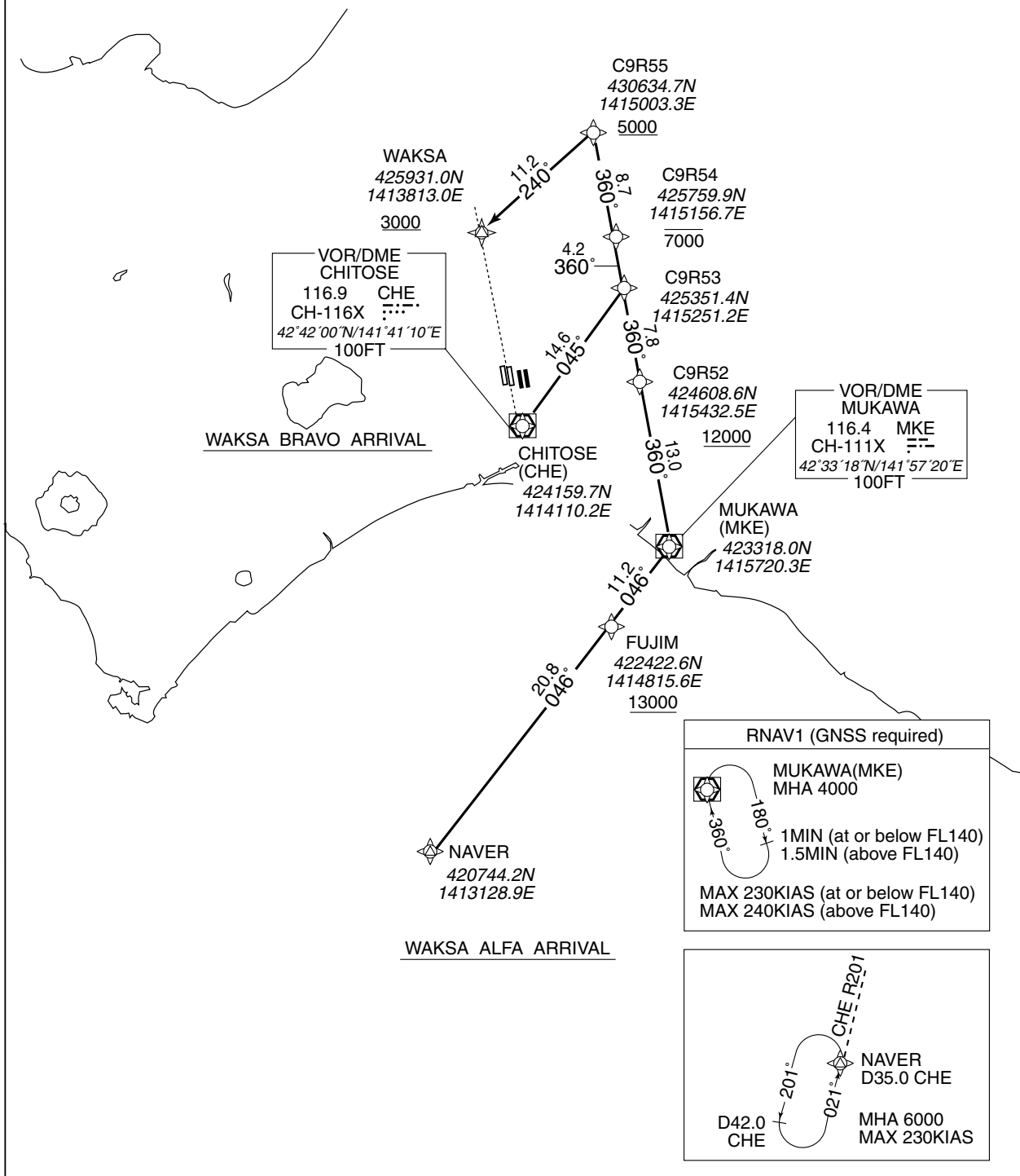
RNAV STAR RWY18L

WAKSA ALFA ARRIVAL
WAKSA BRAVO ARRIVAL

RNAV 1

Note 1) DME/DME/IRU or GNSS required.
2) RADAR service required.

VAR 9° W(2016)



STANDARD ARRIVAL CHART-INSTRUMENT

RJCJ / CHITOSE

RNAV STAR RWY18L

WAKSA ALFA ARRIVAL

From NAVER, to FUJIM at or above 13000FT, to MKE, to C9R52 at or above 12000FT, to C9R53, to C9R54 at or below 7000FT, to C9R55 at or above 5000FT, to WAKSA at or above 3000FT.

Critical DME	SPE: C9R55 - WAKSA MKE: 10.0NM to MKE - 3.0NM to MKE 10.0NM to C9R52 - 8.0NM to C9R52
DME GAP	3.0NM to MKE - 10.0NM to C9R52
Inappropriate Navaids	See AD1.1.6.10.3. Inappropriate NAVAIDs for RNAV1

Serial Number	Path Descriptor	Waypoint Identifier	Fly Over	Course °M(°T)	Magnetic Variation	Distance (NM)	Turn Direction	Altitude (FT)	Speed (KIAS)	Vertical Angle	Navigation Specification
001	IF	NAVER	—	—	-9.3	—	—	—	—	—	RNAV1
002	TF	FUJIM	—	046 (036.6)	-9.3	20.8	—	+13000	—	—	RNAV1
003	TF	MKE	—	046 (036.8)	-9.3	11.2	—	—	—	—	RNAV1
004	TF	C9R52	—	360 (350.9)	-9.3	13.0	—	+12000	—	—	RNAV1
005	TF	C9R53	—	360 (350.9)	-9.3	7.8	—	—	—	—	RNAV1
006	TF	C9R54	—	360 (350.9)	-9.3	4.2	—	-7000	—	—	RNAV1
007	TF	C9R55	—	360 (350.9)	-9.3	8.7	—	+5000	—	—	RNAV1
008	TF	WAKSA	—	240 (230.8)	-9.3	11.2	—	+3000	—	—	RNAV1

Path	Waypoint Identifier	Inbound Course °M(°T)	Magnetic Variation	Outbound Time (MIN)	Turn Direction	Minimum Altitude (FT)	Maximum Altitude (FT)	Speed (KIAS)	Navigation Specification
Hold	MUKAWA (MKE)	360 (350.9)	-9.3	1.0(-14000) 1.5(+14001)	R	4000	—	-230(-14000) -240(+14001)	RNAV1

STANDARD ARRIVAL CHART-INSTRUMENT

RJCJ / CHITOSE

RNAV STAR RWY18L

WAKSA BRAVO ARRIVAL

From CHE, to C9R53, to C9R54 at or below 7000FT, to C9R55 at or above 5000FT, to WAKSA at or above 3000FT.

Critical DME	SPE: C9R55 - WAKSA
DME GAP	CHE - 11.0NM to C9R53
Inappropriate Nav aids	See AD1.1.6.10.3. Inappropriate NAVAIDs for RNAV1

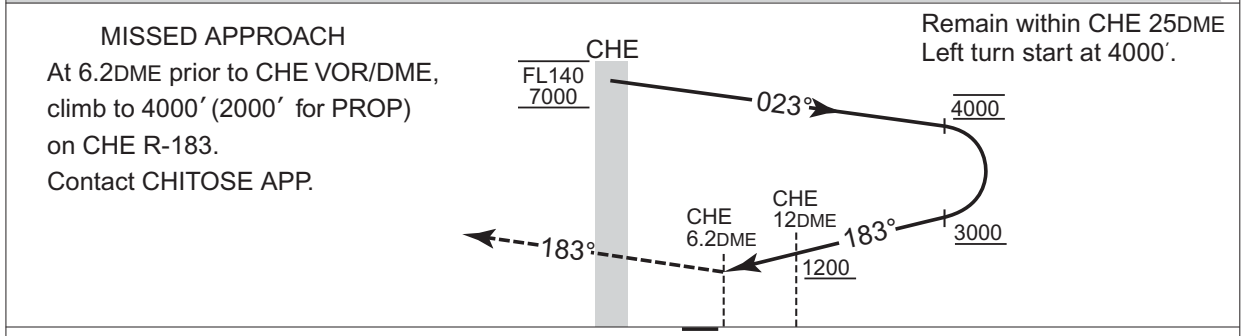
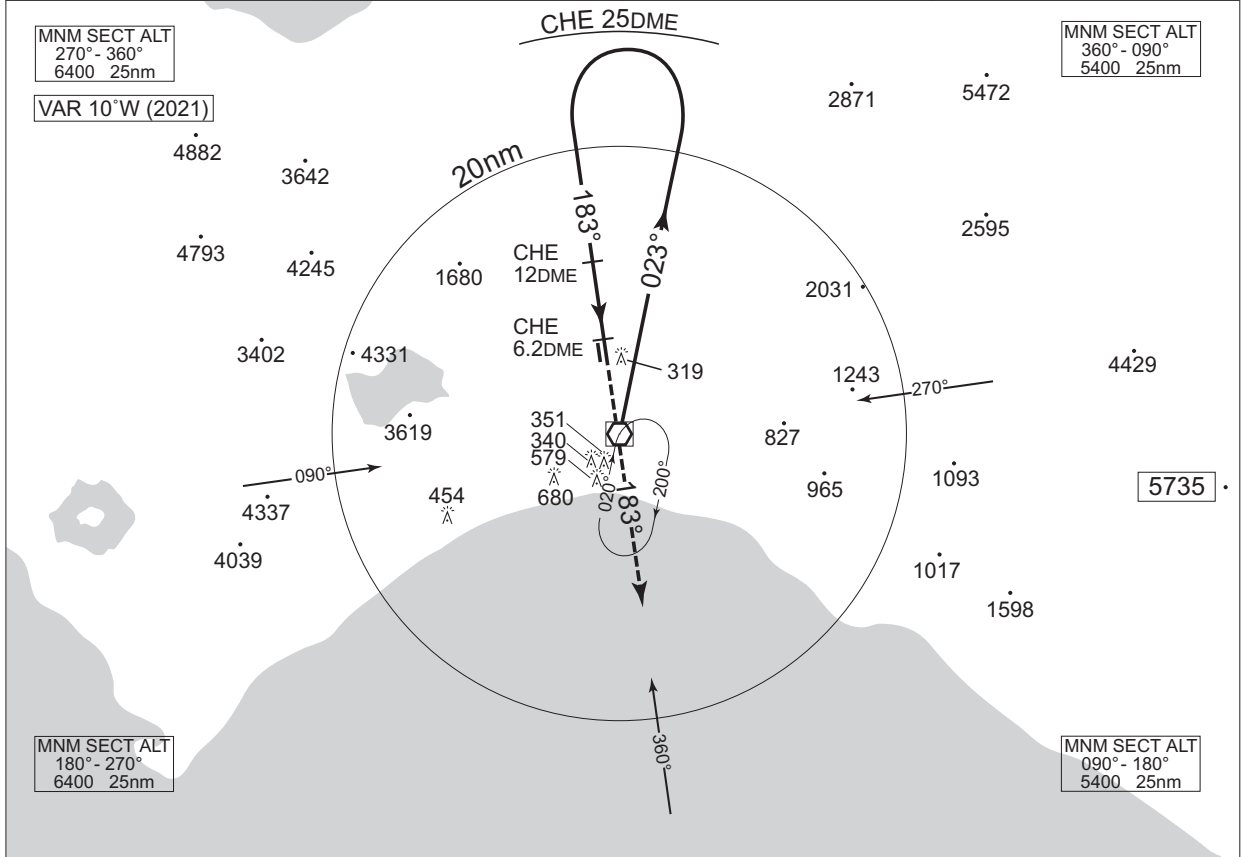
Serial Number	Path Descriptor	Waypoint Identifier	Fly Over	Course °M(°T)	Magnetic Variation	Distance (NM)	Turn Direction	Altitude (FT)	Speed (KIAS)	Vertical Angle	Navigation Specification
001	IF	CHE	—	—	-9.3	—	—	—	—	—	RNAV1
002	TF	C9R53	—	045 (035.8)	-9.3	14.6	—	—	—	—	RNAV1
003	TF	C9R54	—	360 (350.9)	-9.3	4.2	—	-7000	—	—	RNAV1
004	TF	C9R55	—	360 (350.9)	-9.3	8.7	—	+5000	—	—	RNAV1
005	TF	WAKSA	—	240 (230.8)	-9.3	11.2	—	+3000	—	—	RNAV1

INSTRUMENT APPROACH CHART

RJCJ / CHITOSE

VOR/DME NR.1 RWY18L

CHITOSE APP 120.1-124.7 362.3-305.7	CHITOSE VOR/DME 116.9 CHE CH-116X 42°42'00"N/141°41'10"E	CHITOSE TOWER 126.2 - 118.2 236.8-304.5-121.7G	RADAR AVAILABLE
---	---	--	-----------------



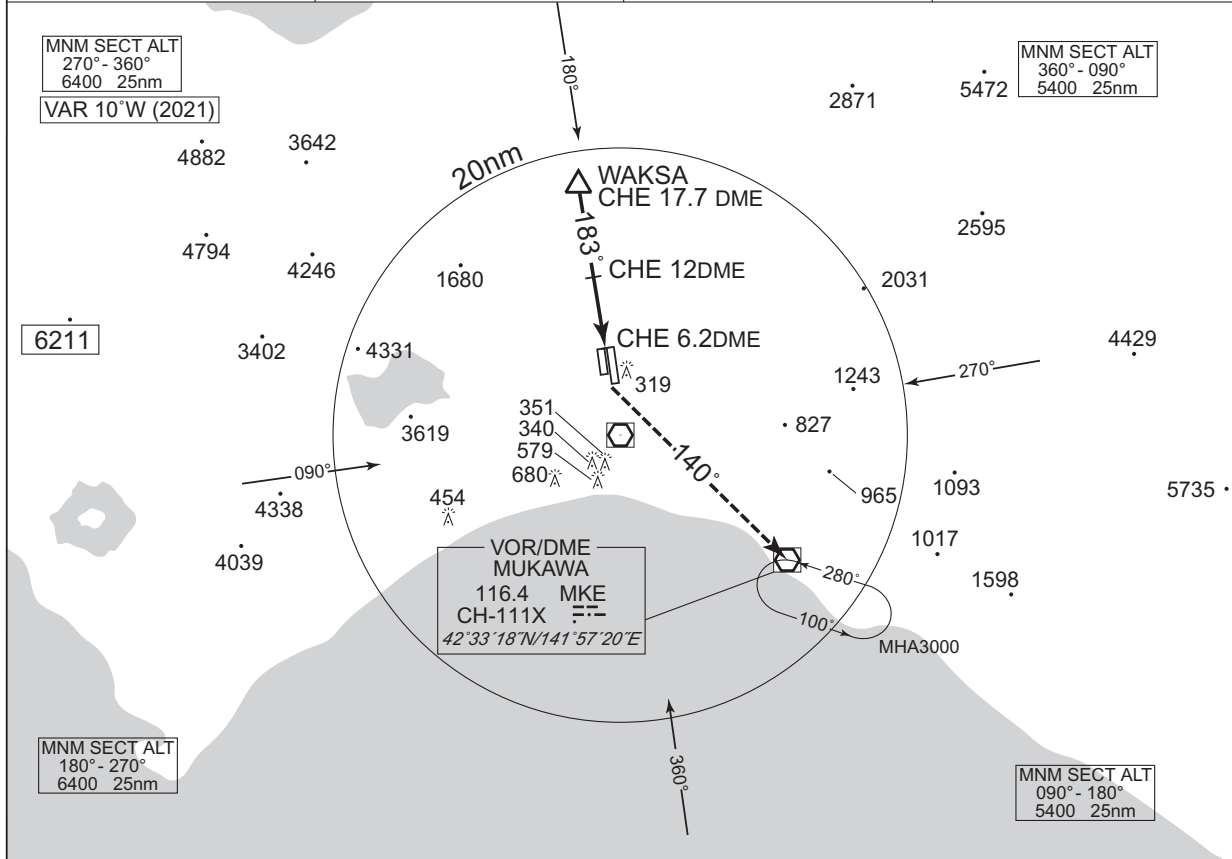
CHANGE : VAR. PROC course.

CAT	MINIMA		THR elev. 70	AD elev. 89		
	MDA(H)	RVR/CMV	CIRCLING			
A	560 (490)	1000	620 (531)	1600		
B		1200			640 (551)	3200
C			1600	2400		
D				1600		

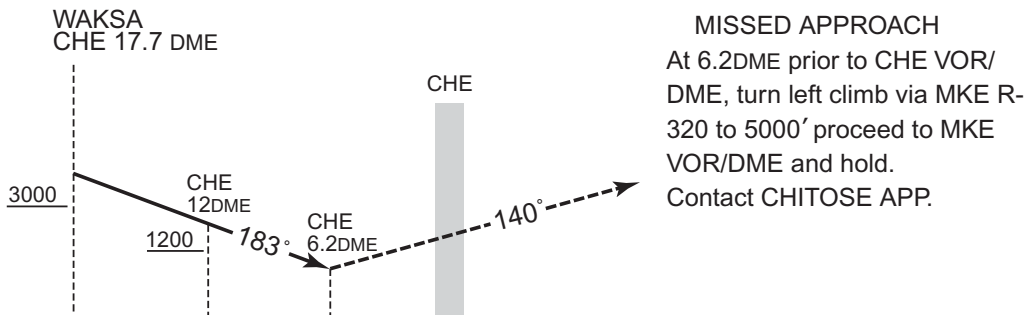
INSTRUMENT APPROACH CHART

RJCJ / CHITOSE VOR/DME NR.2 RWY18L

CHITOSE APP 120.1-124.7 362.3-305.7	CHITOSE VOR/DME 116.9 CHE CH-116X 42°42'00"N/141°41'10"E	CHITOSE TOWER 118.2-126.2 236.8-304.5-121.7G	RADAR AVAILABLE
---	---	--	-----------------



CHANGE : VAR. Course FM WAKSA to CHE 6.2DME.



MISSED APPROACH
 At 6.2DME prior to CHE VOR/DME, turn left climb via MKE R-320 to 5000' proceed to MKE VOR/DME and hold.
 Contact CHITOSE APP.

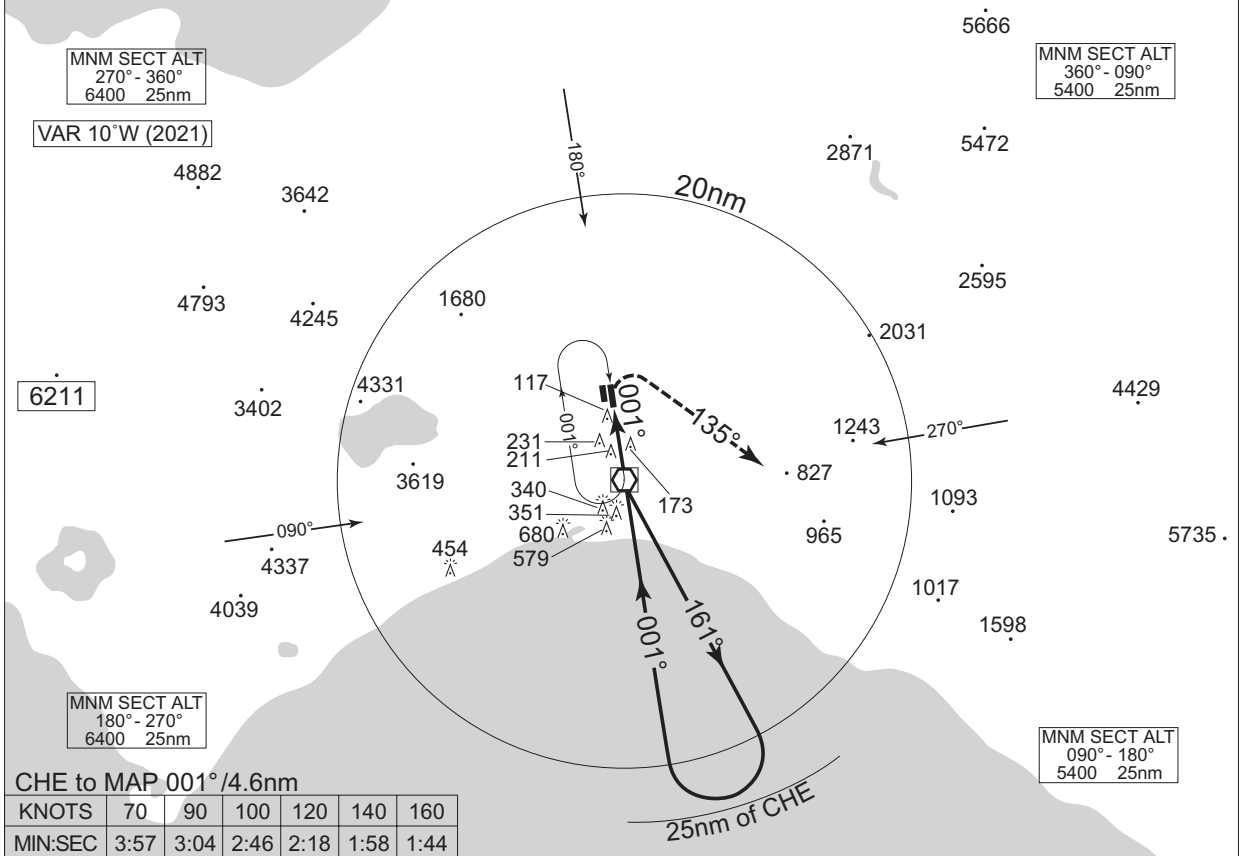
MINIMA		THR elev. 70	AD elev. 89	
CAT			CIRCLING	
	MDA(H)	RVR/CMV	MDA(H)	VIS
A	560 (490)	1000	620 (531)	1600
B		1200		640 (551)
C			1600	

INSTRUMENT APPROACH CHART

RJCJ / CHITOSE

VOR NR.1 RWY36R

CHITOSE APP 120.1 - 124.7 362.3 - 305.7	CHITOSE VOR/DME 116.9 CHE CH-116X 42°42'00"N/141°41'10"E	CHITOSE TOWER 126.2 - 118.2 236.8 - 304.5 - 121.7G	RADAR AVAILABLE
--	--	---	------------------------



MISSED APPROACH
 At 4.6nm after passing CHE VOR, turn right climb to 4000' (2000' for PROP) on 135°. Contact CHITOSE APP.

FL140 7000

Remain within 25nm of CHE right turn start at 6000'.

CAT	MINIMA		THR elev. 85	AD elev. 89
	MDA(H)	RVR/CMV	CIRCLING	
A	620 (531)	1000	620 (531)	1600
B		1200		640 (551)
C			1600	
D				

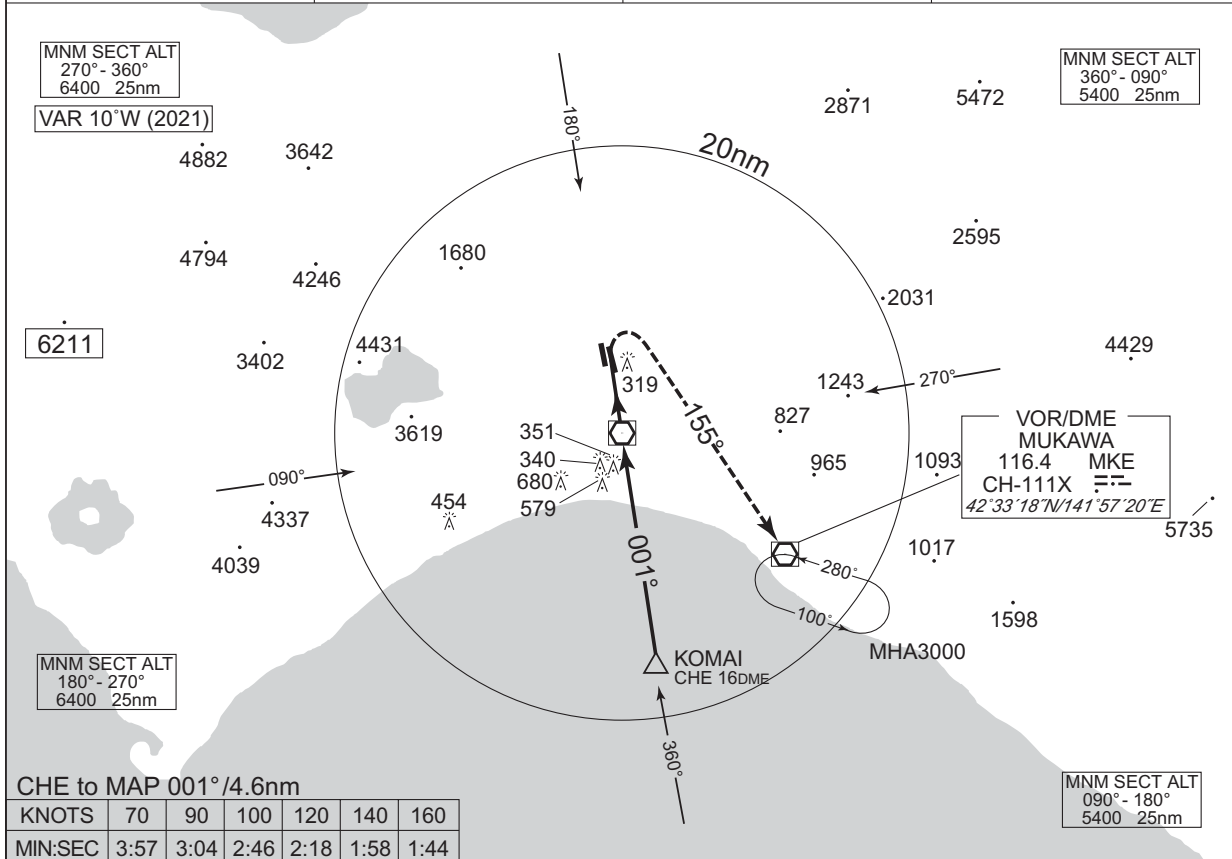
CHANGE : VAR.

INSTRUMENT APPROACH CHART

RJCJ / CHITOSE

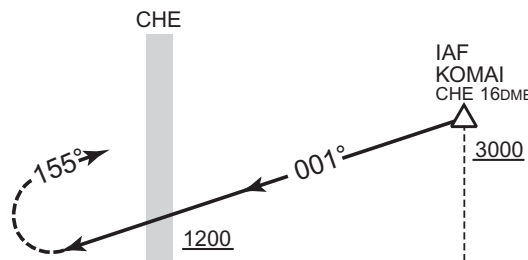
VOR NR.2 RWY36R

CHITOSE APP 120.1 - 124.7 362.3 - 305.7	CHITOSE VOR/DME 116.9 CHE CH-116X 42°42'00"N/141°41'10"E	CHITOSE TOWER 118.2 - 126.2 236.8 - 304.5 - 121.7G	RADAR AVAILABLE
---	---	--	-----------------



MISSED APPROACH

At 4.6nm after passing CHE VOR,
turn right climb via MKE
R-335 to 5000', proceed to
MKE VOR/DME and hold.
Contact CHITOSE APP.



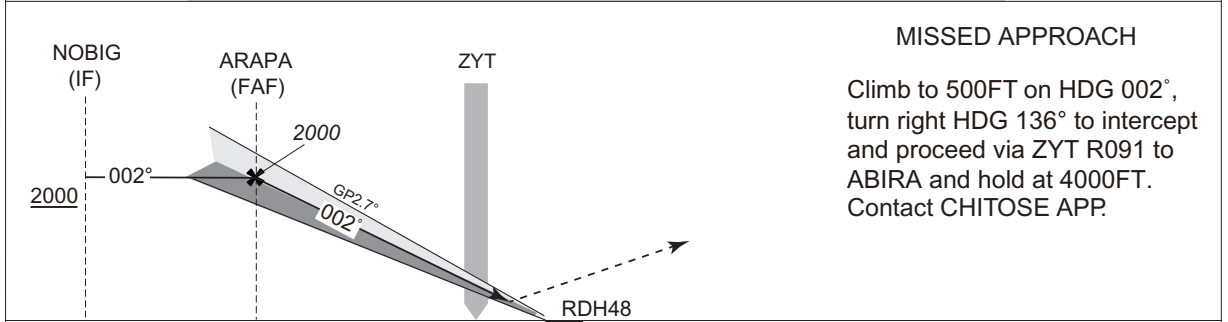
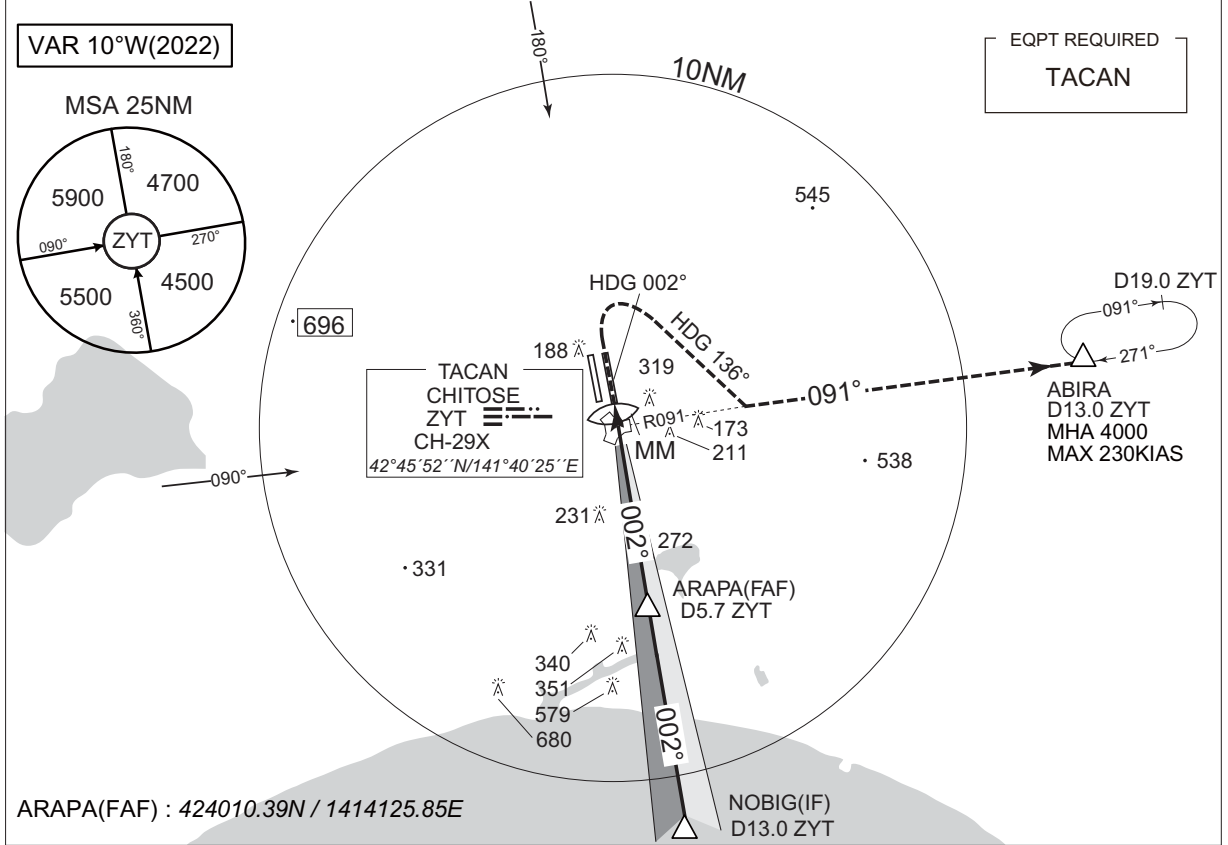
CHANGE : VAR.

CAT	MINIMA		THR elev. 85	AD elev. 89
	MDA(H)	RVR/CMV	CIRCLING	
A	620 (531)	1000	620 (531)	1600
B		1200		2400
C		1600	640 (551)	3200
D				

INSTRUMENT APPROACH CHART

RJCJ / CHITOSE ILS Z RWY 36R

CHITOSE APP 124.7 - 120.1 362.3 - 305.7	ILS - LOC 110.3 ICB $\ddot{\cdot}\ddot{\cdot}\ddot{\cdot}$ ILS-GP 335.0	CHITOSE TOWER 126.2 - 118.2 236.8 - 304.5 - 121.7G	RADAR AVBL
---	---	--	------------



13.0	5.7	0.7	0	DME to ZYT
13.7	6.4			NM to THR

Missed APCH climb gradient MNM 4.0%

MINIMA	THR elev. 85	AD elev. 89		
CAT	CAT I		CIRCLING	
	DA(H)	RVR/ CMV	MDA(H)	VIS
A	285 (200)	750	620(531)	1600
B				2400
C			660(571)	3200
D				

CHANGE : Circling restriction.

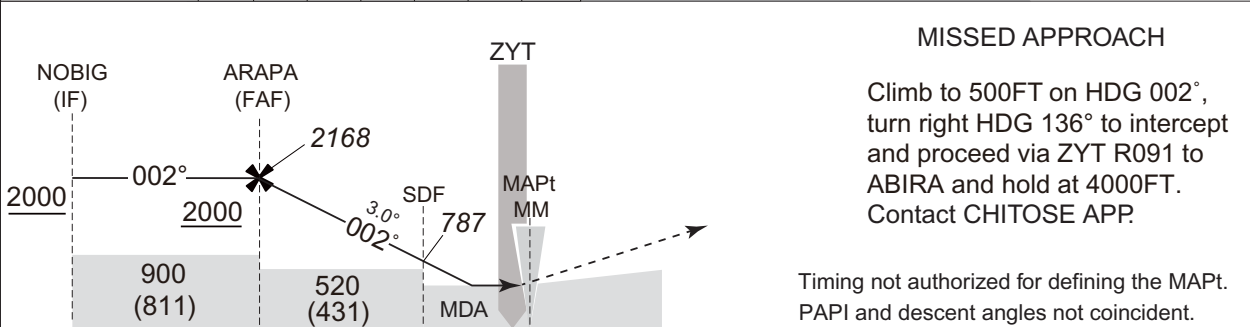
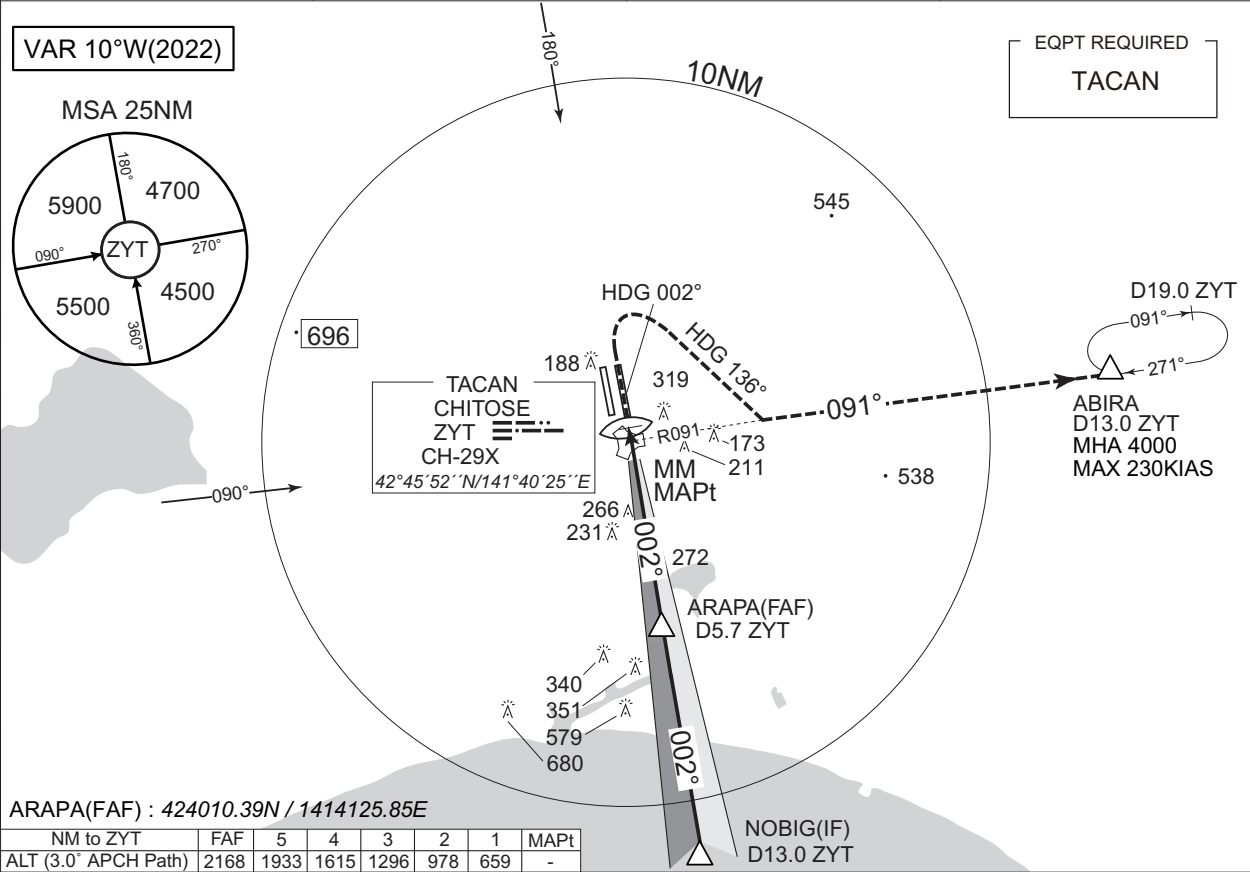
MINIMA with Missed APCH climb gradient of 2.5% are not established.
Circling to RWY18L ONLY.

INSTRUMENT APPROACH CHART

RJCJ / CHITOSE

LOC RWY36R

CHITOSE APP 124.7 - 120.1 362.3 - 305.7	ILS - LOC 110.3 ICB $\ddot{\cdot}\ddot{\cdot}\ddot{\cdot}$ ILS-GP 335.0	CHITOSE TOWER 126.2 - 118.2 236.8 - 304.5 - 121.7G	RADAR AVBL
---	---	--	------------



13.0	5.7	1.4	0.1	DME to / from ZYT
13.7	6.4	2.1	0.7 0.6 0	NM to THR

MINIMA		THR elev. 85		AD elev. 89	
CAT	MDA(H)		RVR/CMV		CIRCLING
A	400 (311)	1000	620(531)		1600
B					
C					3200
D					

Circling to RWY18L ONLY.

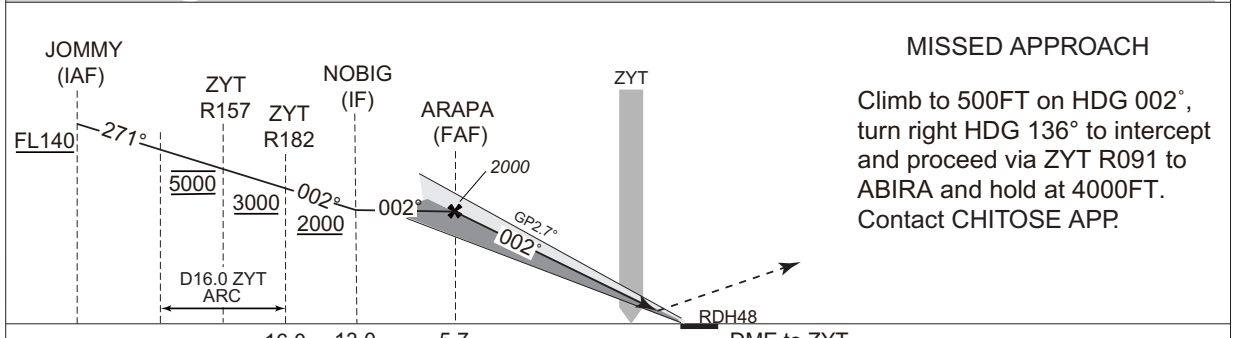
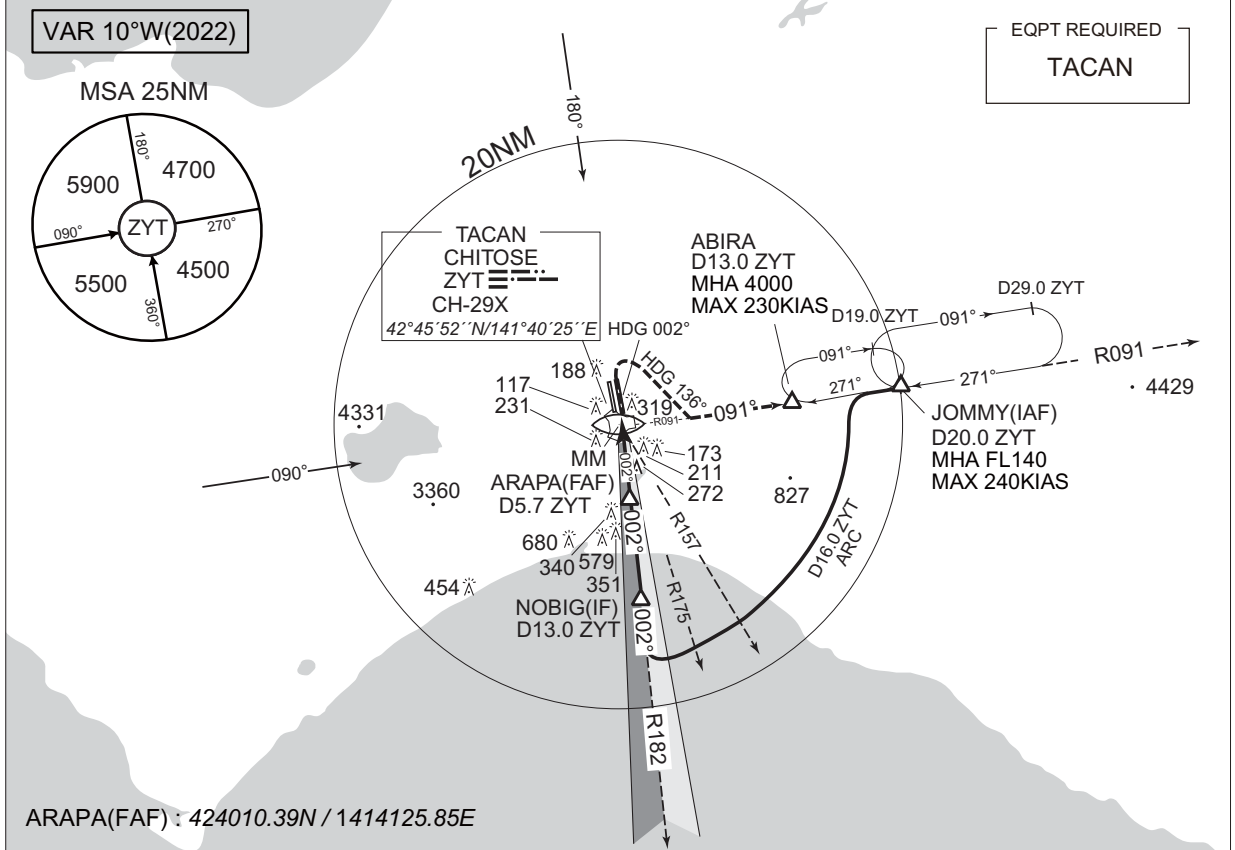
CHANGE : SDF added. OBST added(266).

INSTRUMENT APPROACH CHART

RJCJ / CHITOSE

ILS Y RWY 36R

CHITOSE APP 124.7 - 120.1 362.3 - 305.7	ILS - LOC 110.3 ICB 𠄎𠄎𠄎 ILS - GP 335.0	CHITOSE TOWER 126.2 - 118.2 236.8 - 304.5 - 121.7G	RADAR AVBL
---	--	--	------------



	16.0	13.0	5.7	0.7	0	DME to ZYT
	16.7	13.7	6.4			NM to THR

Missed APCH climb gradient MNM 4.0%

MINIMA		THR elev. 85	AD elev. 89	
CAT	CAT I		CIRCLING	
	DA(H)	RVR/CMV	MDA(H)	VIS
A	285 (200)	750	620(531)	1600
B				2400
C				3200
D			660(571)	3200

MINIMA with Missed APCH climb gradient of 2.5% are not established.
Circling to RWY18L ONLY.

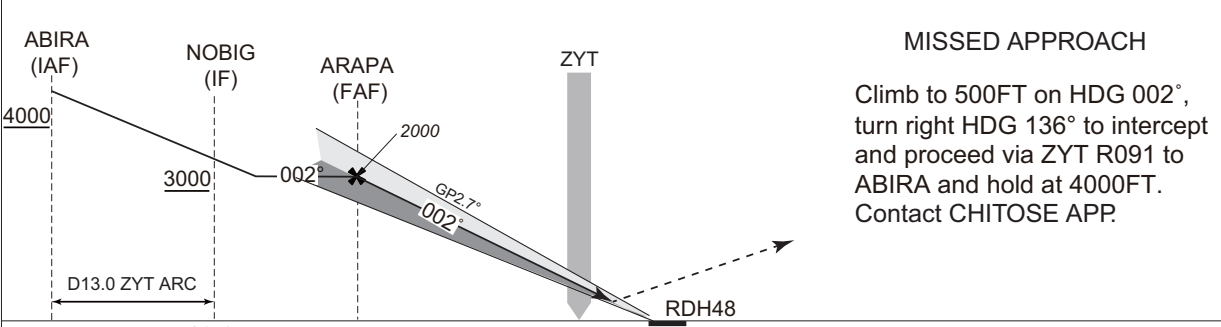
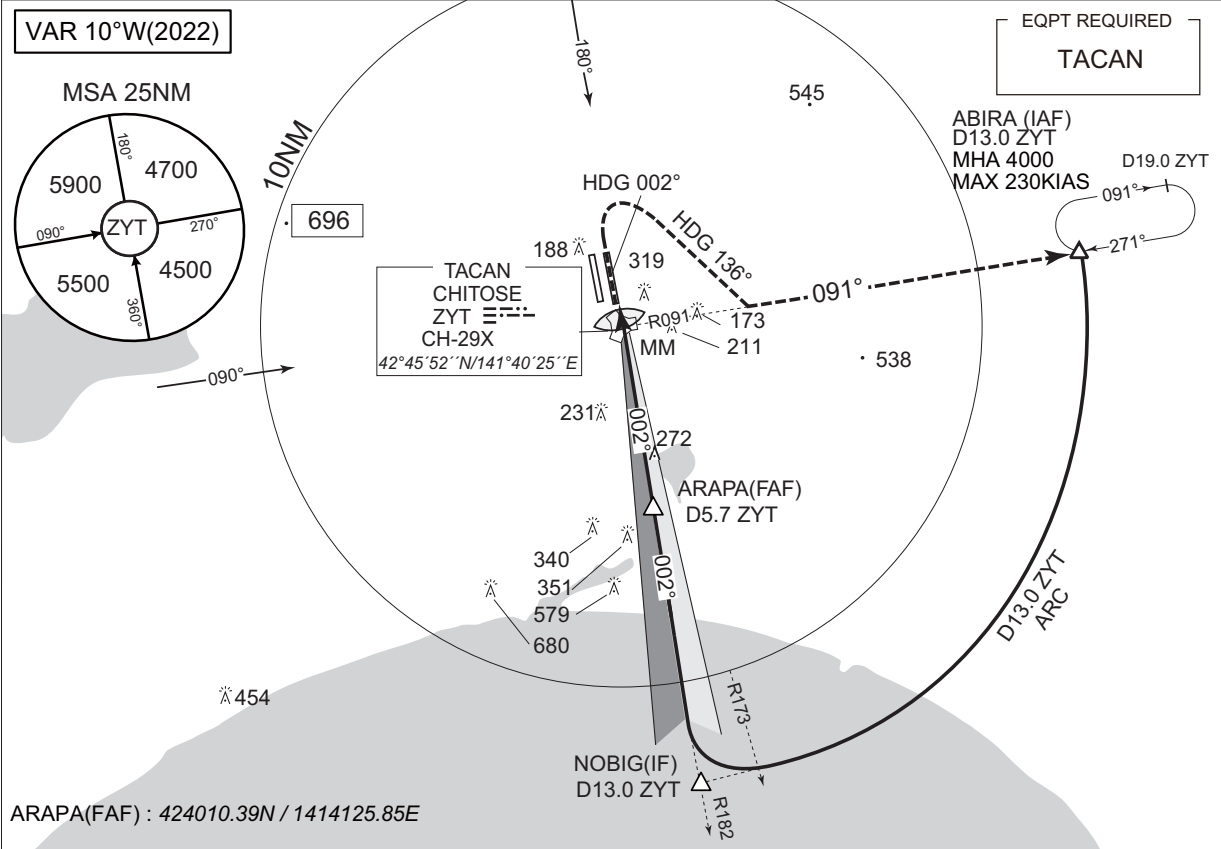
CHANGE : Circling restriction.

INSTRUMENT APPROACH CHART

RJCJ / CHITOSE

ILS X RWY 36R

CHITOSE APP 124.7 - 120.1 362.3 - 305.7	ILS - LOC 110.3 ICB 335.0 ILS - GP 335.0	CHITOSE TOWER 126.2 - 118.2 236.8 - 304.5 - 121.7G	RADAR AVBL
---	--	--	------------



13.0	5.7				
13.7	6.4	0.7	0		
				DME to ZYT	
				NM to THR	

Missed APCH climb gradient MNM 4.0%

MINIMA	THR elev. 85		AD elev. 89	
CAT	CAT I		CIRCLING	
	DA(H)	RVR/CMV	MDA(H)	VIS
A	285 (200)	750	620(531)	1600
B				2400
C			660(571)	3200
D				

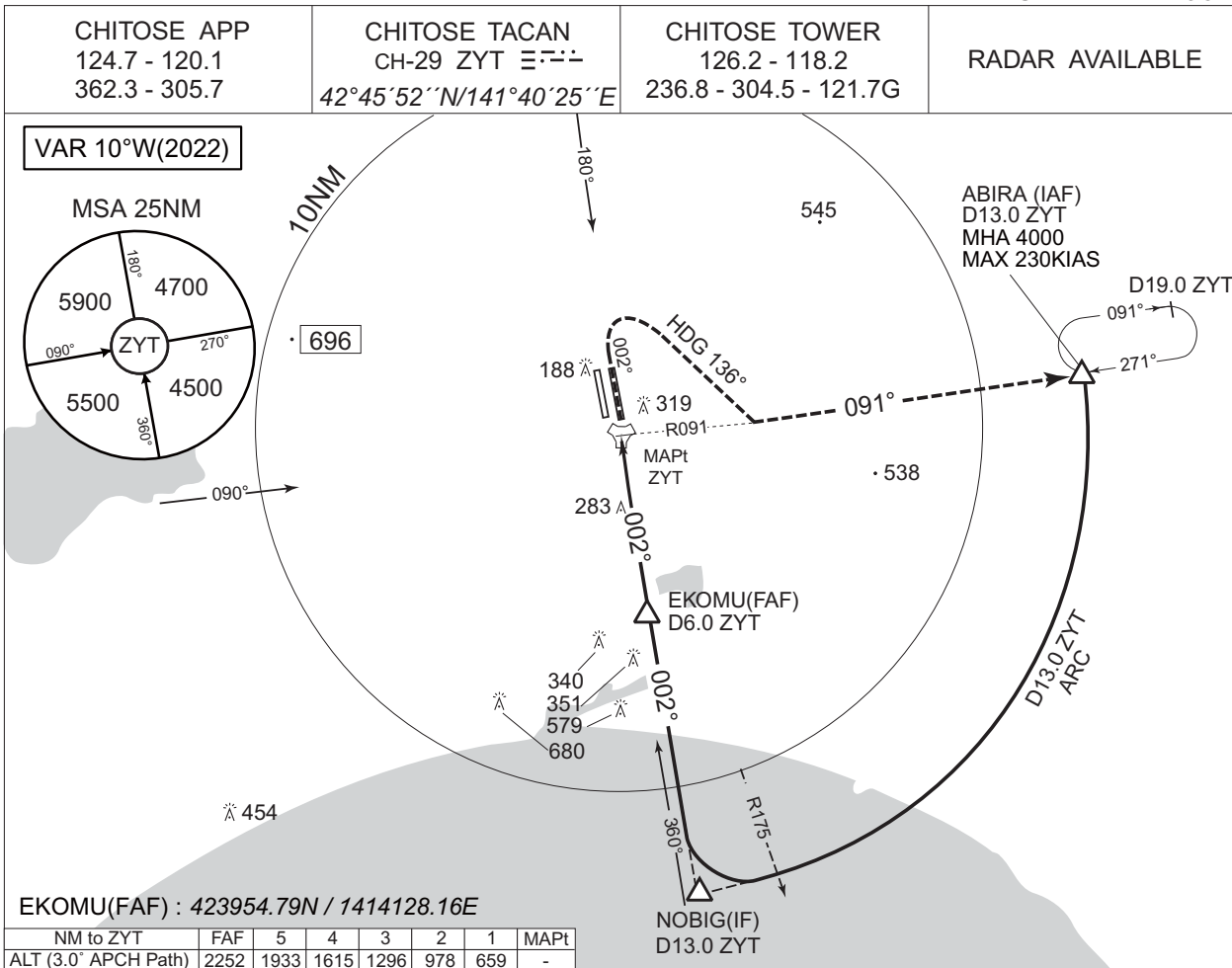
MINIMA with Missed APCH climb gradient of 2.5% are not established.
Circling to RWY18L ONLY.

CHANGE : Circling restriction.

INSTRUMENT APPROACH CHART

RJCJ / CHITOSE

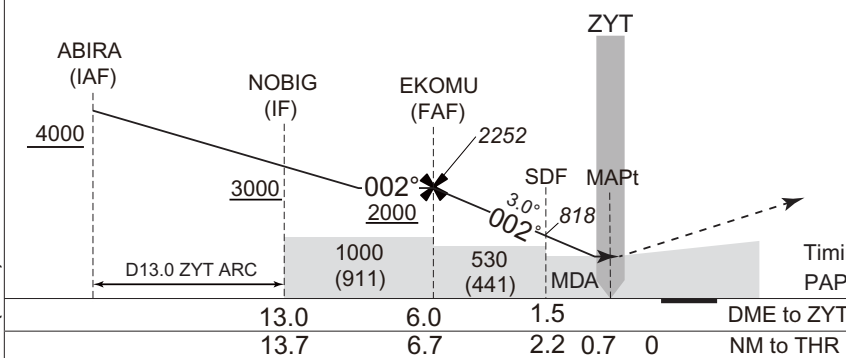
TACAN Y RWY 36R



MISSED APPROACH

Climb to 600FT via ZYT R002, turn right HDG 136° to intercept and proceed via ZYT R091 to ABIRA and hold at 4000FT. Contact CHITOSE APP.

Timing not authorized for defining the MAPt. PAPI and descent angles not coincident.



MINIMA		THR elev. 85	AD elev. 89	
CAT			CIRCLING	
	MDA(H)	RVR/CMV	MDA(H)	VIS
A	450(361)	900	620(531)	1600
B		1000		660(571)
C			1400	
D				

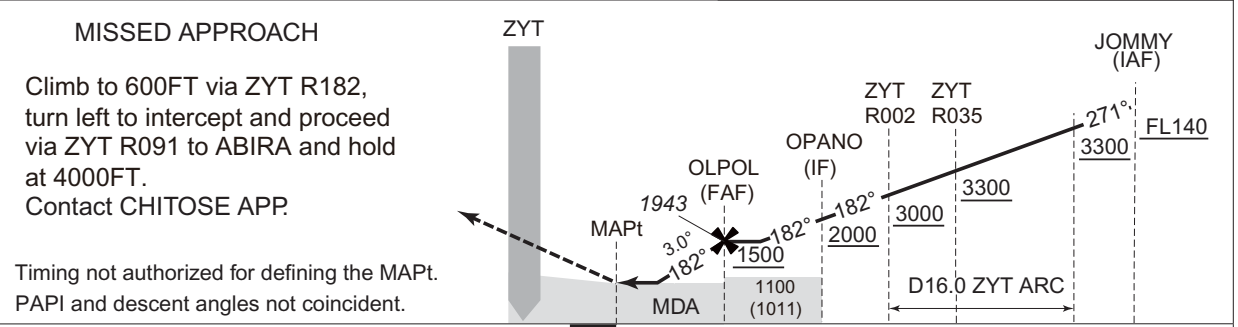
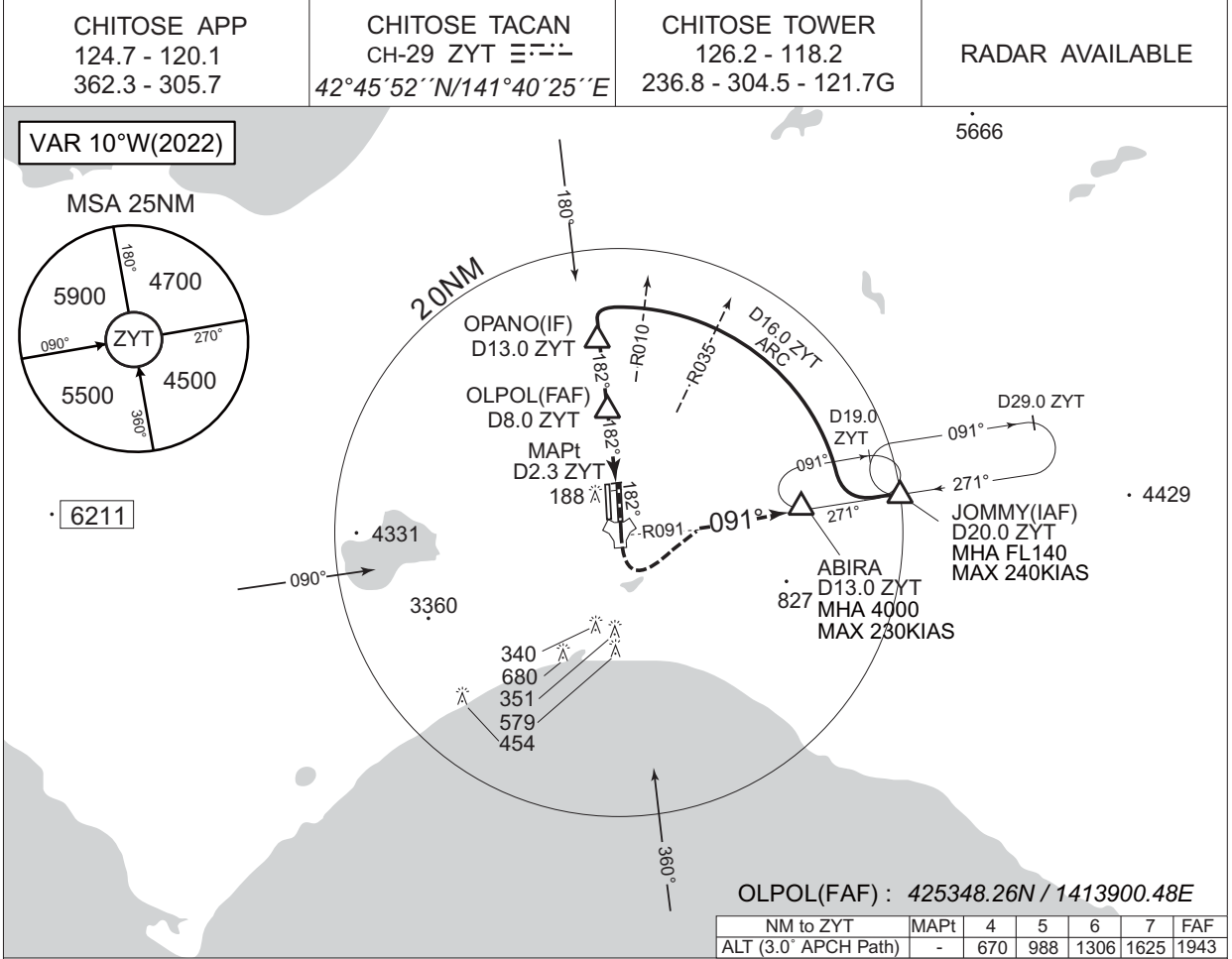
Circling to RWY18L ONLY.

CHANGE : SDF added. OBST added(283).

INSTRUMENT APPROACH CHART

RJCJ / CHITOSE

TACAN Z RWY 18L



	DME to ZYT	2.3	8.0	13.0	16.0
	NM to THR	0	5.7	10.7	13.7

MINIMA		THR elev. 70		AD elev. 89	
CAT			CIRCLING		VIS
	MDA(H)	RVR/CMV	MDA(H)		
A	500(430)	900	620(531)	1600	
B		1000		2400	
C		1400		660(571)	3200
D					

CHANGE : Circling restriction.

Circling to RWY36R ONLY.

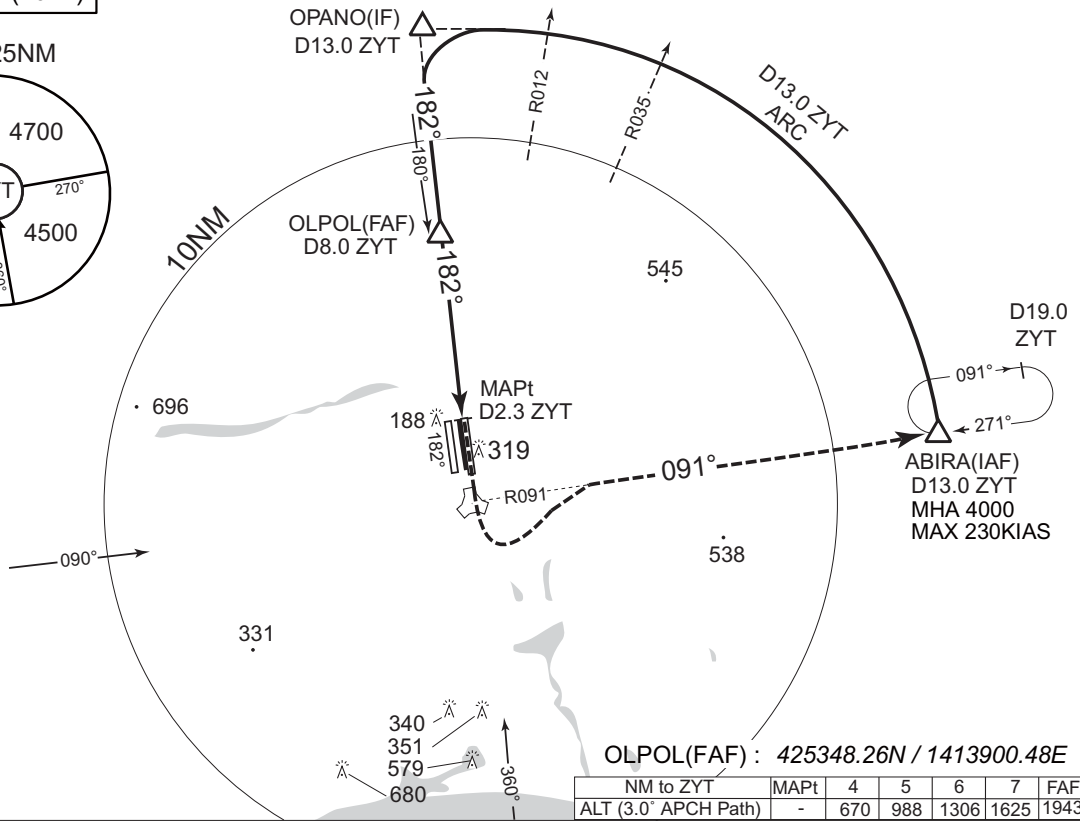
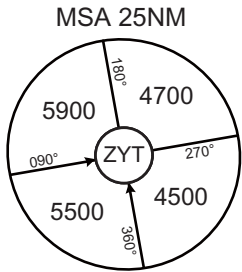
INSTRUMENT APPROACH CHART

RJCJ / CHITOSE

TACAN Y RWY 18L

CHITOSE APP 124.7 - 120.1 362.3 - 305.7	CHITOSE TACAN CH-29 ZYT $\equiv \text{---}$ 42°45'52"N/141°40'25"E	CHITOSE TOWER 126.2 - 118.2 236.8 - 304.5 - 121.7G	RADAR AVAILABLE
---	--	--	-----------------

VAR 10°W(2022)

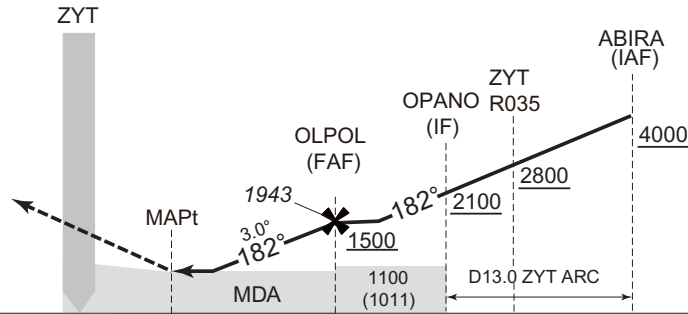


NM to ZYT	MAPt	4	5	6	7	FAF
ALT (3.0° APCH Path)	-	670	988	1306	1625	1943

MISSED APPROACH

Climb to 600FT via ZYT R182, turn left to intercept and proceed via ZYT R091 to ABIRA and hold at 4000FT.
Contact CHITOSE APP.

Timing not authorized for defining the MAPt.
PAPI and descent angles not coincident.



DME to ZYT	2.3	8.0	13.0
NM to THR	0	5.7	10.7

MINIMA		THR elev. 70	AD elev. 89	
CAT	MDA(H)		CIRCLING	
		RVR/CMV	MDA(H)	VIS
A	500(430)	900	620(531)	1600
B		1000		660(571)
C			1400	
D				

Circling to RWY36R ONLY.

CHANGE : Circling restriction.