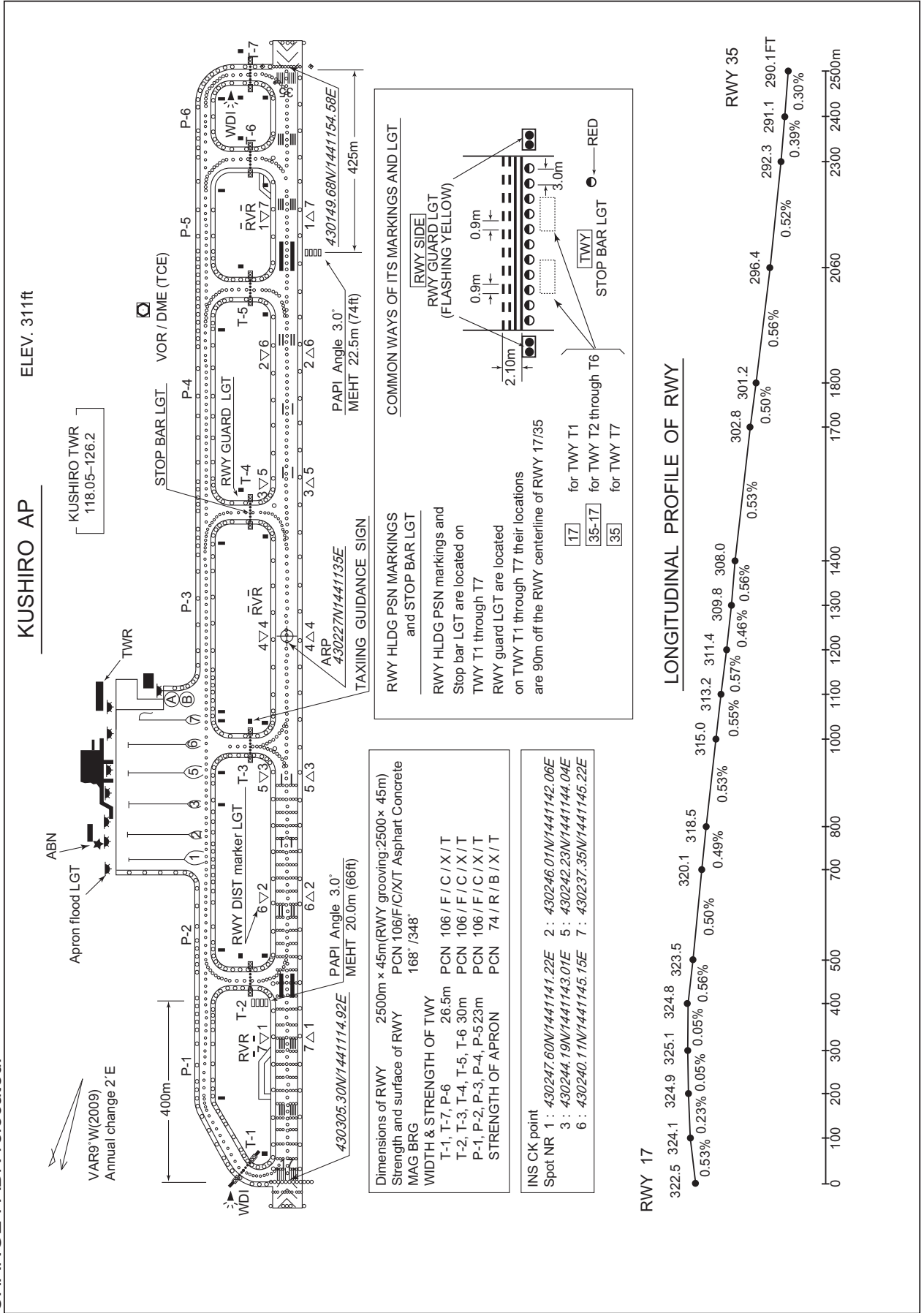


RJCK / KUSHIRO

AD CHART

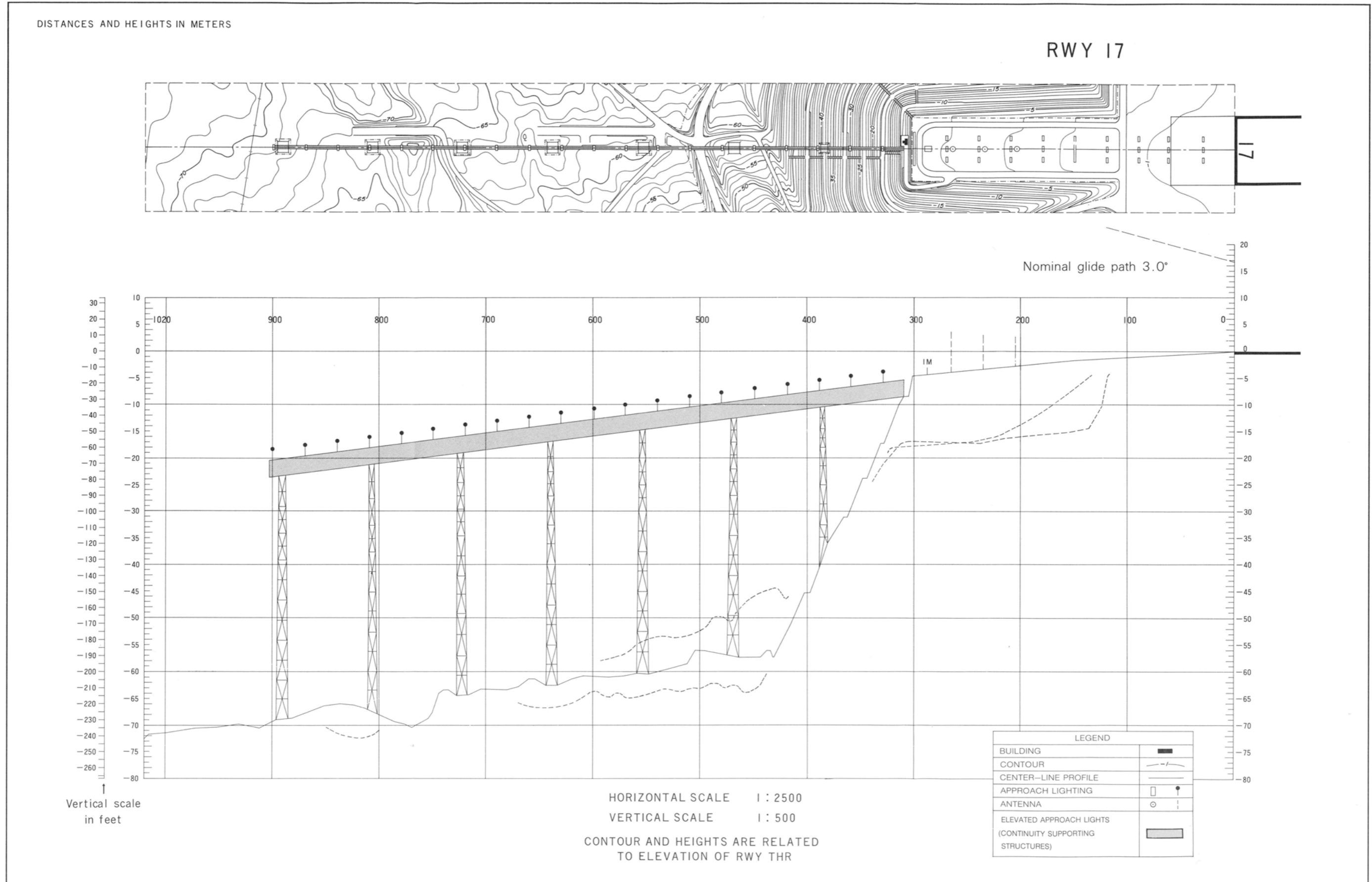
CHANGE : ABN relocated.



INTENTIONALLY LEFT BLANK

RJCK/KUSHIRO

PRECISION APPROACH TERRAIN CHART – ICAO



STANDARD DEPARTURE CHART -INSTRUMENT

RJCK / KUSHIRO

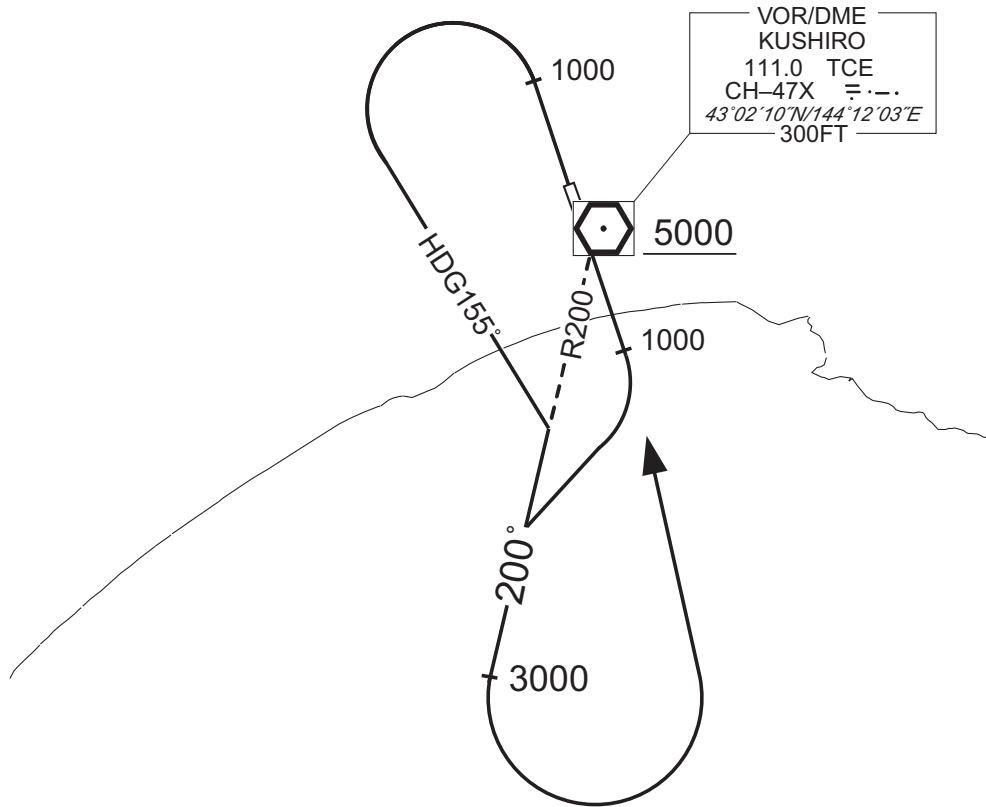
SID

KUSHIRO REVERSAL FIVE DEPARTURE

- RWY17 : Climb RWY HDG to 1000FT, turn right...
- RWY35 : Climb RWY HDG to 1000FT, turn left HDG155° ...
...to intercept and proceed via TCE R200 to 3000FT, turn left, direct to
TCE VOR/DME.
Cross TCE VOR/DME at or above 5000FT.

Note : No turn before DER.

CHANGE : PROC abolished(ALICE THREE DEPARTURE, ERIMO FOUR DEPARTURE, OBIHIRO THREE DEPARTURE, YUDOH TWO DEPARTURE, EATAK ONE DEPARTURE).
PROC renamed. KUSHIRO VOR/DME relocated(KSE→TCE).



STANDARD DEPARTURE CHART -INSTRUMENT

RJCK / KUSHIRO

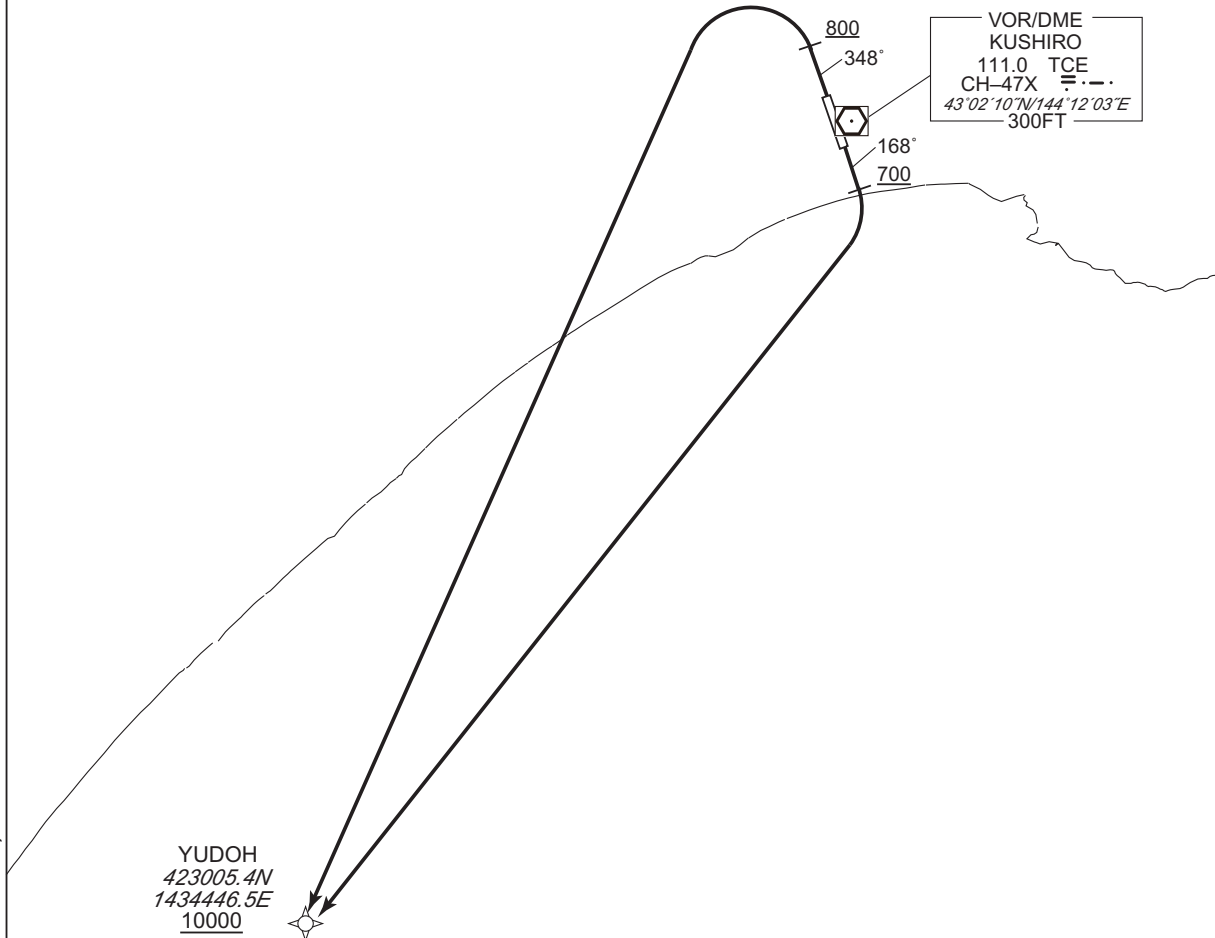
RNAV SID

TANCHO ONE DEPARTURE

RNP1

Note GNSS required.

VAR 9°W



RWY17 : Climb on HDG168° at or above 700FT, turn right direct to YUDOH at or above 10000FT.
 RWY35 : Climb on HDG348° at or above 800FT, turn left direct to YUDOH at or above 10000FT.

RWY17

Serial Number	Path Descriptor	Waypoint Identifier	Fly Over	Course °M(°T)	Magnetic Variation	Distance (NM)	Turn Direction	Altitude (FT)	Speed (KIAS)	Vertical Angle	Navigation Specification
001	VA	-	-	168 (159.0)	-9.2	-	-	+700	-	-	RNP1
002	DF	YUDOH	-	-	-9.2	-	R	+10000	-	-	RNP1

RWY35

Serial Number	Path Descriptor	Waypoint Identifier	Fly Over	Course °M(°T)	Magnetic Variation	Distance (NM)	Turn Direction	Altitude (FT)	Speed (KIAS)	Vertical Angle	Navigation Specification
001	VA	-	-	348 (339.0)	-9.2	-	-	+800	-	-	RNP1
002	DF	YUDOH	-	-	-9.2	-	L	+10000	-	-	RNP1

CHANGE : Navigation Specification(Basic RNP1 → RNP1).

STANDARD DEPARTURE CHART -INSTRUMENT

RJCK / KUSHIRO

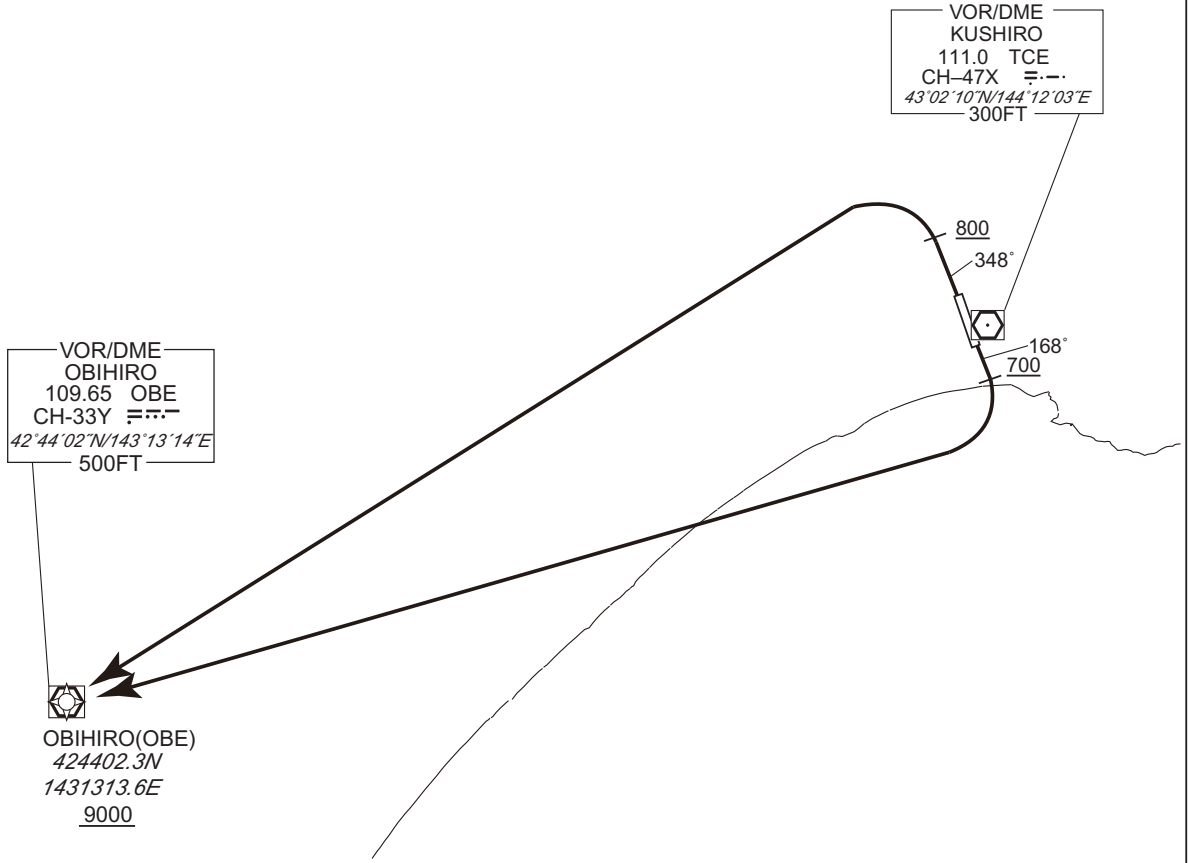
RNAV SID

HIDAKA ONE DEPARTURE

RNP1

Note GNSS required.

VAR 9°W



RWY17 : Climb on HDG168° at or above 700FT, turn right direct to OBE at or above 9000FT.
 RWY35 : Climb on HDG348° at or above 800FT, turn left direct to OBE at or above 9000FT.

CHANGE : Navigation Specification(Basic RNP1 → RNP1).

RWY17

Serial Number	Path Descriptor	Waypoint Identifier	Fly Over	Course °M(°T)	Magnetic Variation	Distance (NM)	Turn Direction	Altitude (FT)	Speed (KIAS)	Vertical Angle	Navigation Specification
001	VA	-	-	168 (159.0)	-9.2	-	-	+700	-	-	RNP1
002	DF	OBE	-	-	-9.2	-	R	+9000	-	-	RNP1

RWY35

Serial Number	Path Descriptor	Waypoint Identifier	Fly Over	Course °M(°T)	Magnetic Variation	Distance (NM)	Turn Direction	Altitude (FT)	Speed (KIAS)	Vertical Angle	Navigation Specification
001	VA	-	-	348 (339.0)	-9.2	-	-	+800	-	-	RNP1
002	DF	OBE	-	-	-9.2	-	L	+9000	-	-	RNP1

STANDARD DEPARTURE CHART -INSTRUMENT

RJCK / KUSHIRO

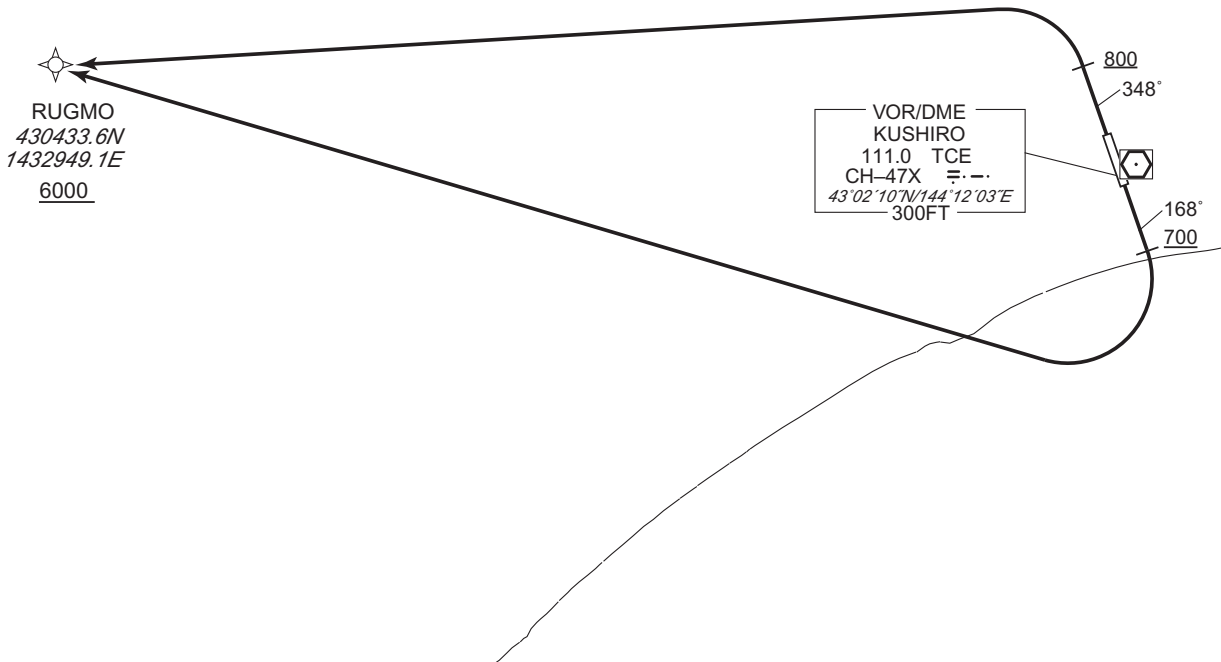
RNAV SID

RUGMO ONE DEPARTURE

RNP1

Note GNSS required.

VAR 9°W



RWY17 : Climb on HDG168° at or above 700FT, turn right direct to RUGMO at or above 6000FT.
 RWY35 : Climb on HDG348° at or above 800FT, turn left direct to RUGMO at or above 6000FT.

CHANGE : Navigation Specification(Basic RNP1 → RNP1).

RWY17

Serial Number	Path Descriptor	Waypoint Identifier	Fly Over	Course °M(°T)	Magnetic Variation	Distance (NM)	Turn Direction	Altitude (FT)	Speed (KIAS)	Vertical Angle	Navigation Specification
001	VA	-	-	168 (159.0)	-9.2	-	-	+700	-	-	RNP1
002	DF	RUGMO	-	-	-9.2	-	R	+6000	-	-	RNP1

RWY35

Serial Number	Path Descriptor	Waypoint Identifier	Fly Over	Course °M(°T)	Magnetic Variation	Distance (NM)	Turn Direction	Altitude (FT)	Speed (KIAS)	Vertical Angle	Navigation Specification
001	VA	-	-	348 (339.0)	-9.2	-	-	+800	-	-	RNP1
002	DF	RUGMO	-	-	-9.2	-	L	+6000	-	-	RNP1

STANDARD DEPARTURE CHART -INSTRUMENT

RJCK / KUSHIRO

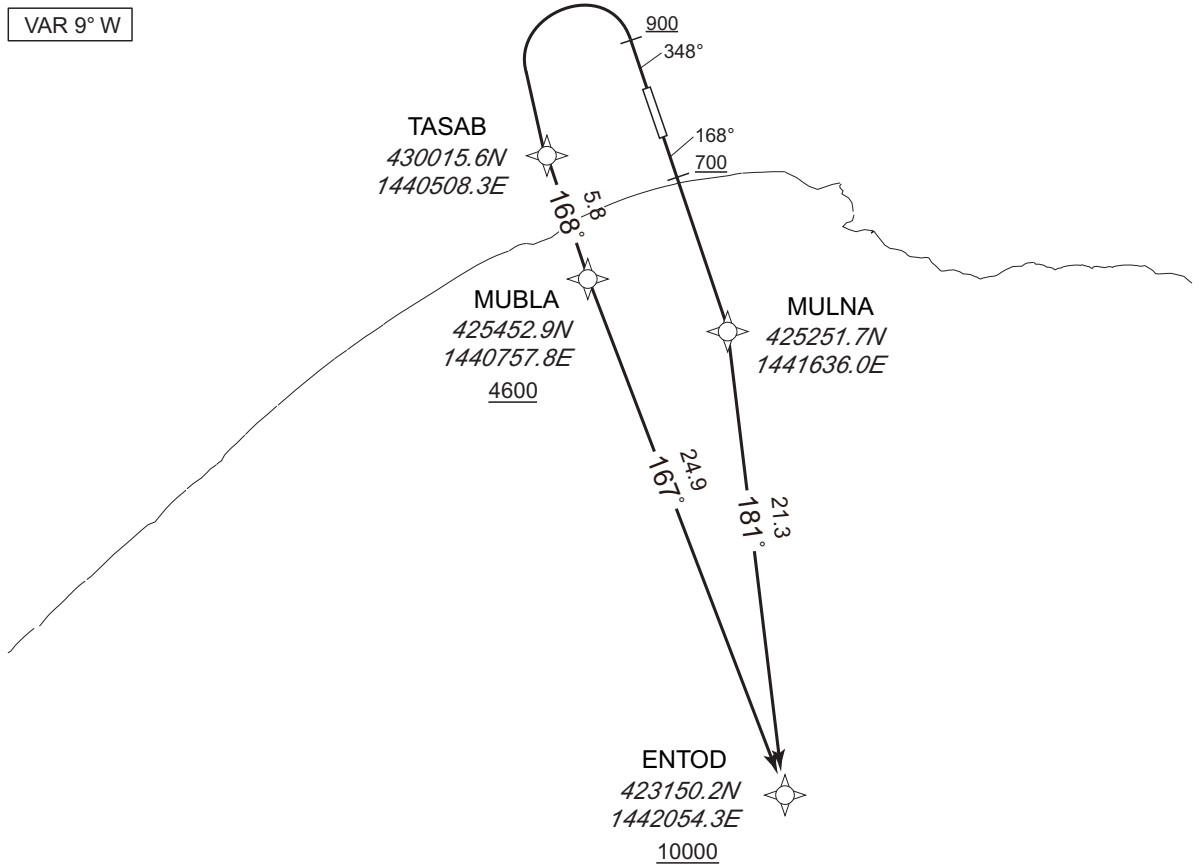
RNAV SID

ENTOD ONE DEPARTURE

RNP1

Note GNSS required.

VAR 9° W



RWY17 : Climb on HDG168° at or above 700FT, direct to MULNA, to ENTOD at or above 10000FT.

RWY35 : Climb on HDG348° at or above 900FT, turn left direct to TASAB, to MUBLA at or above 4600FT, to ENTOD at or above 10000FT.

RWY17

Serial Number	Path Descriptor	Waypoint Identifier	Fly Over	Course °M(°T)	Magnetic Variation	Distance (NM)	Turn Direction	Altitude (FT)	Speed (KIAS)	Vertical Angle	Navigation Specification
001	VA	-	-	168 (159.0)	-9.3	-	-	+700	-	-	RNP1
002	DF	MULNA	-	-	-9.3	-	-	-	-	-	RNP1
003	TF	ENTOD	-	181 (171.4)	-9.3	21.3	-	+10000	-	-	RNP1

RWY35

Serial Number	Path Descriptor	Waypoint Identifier	Fly Over	Course °M(°T)	Magnetic Variation	Distance (NM)	Turn Direction	Altitude (FT)	Speed (KIAS)	Vertical Angle	Navigation Specification
001	VA	-	-	348 (339.0)	-9.3	-	-	+900	-	-	RNP1
002	DF	TASAB	-	-	-9.3	-	L	-	-	-	RNP1
003	TF	MUBLA	-	168 (159.0)	-9.3	5.8	-	+4600	-	-	RNP1
004	TF	ENTOD	-	167 (157.5)	-9.3	24.9	-	+10000	-	-	RNP1

CHANGE : New PROC.

INTENTIONALLY LEFT BLANK

STANDARD ARRIVAL CHART -INSTRUMENT

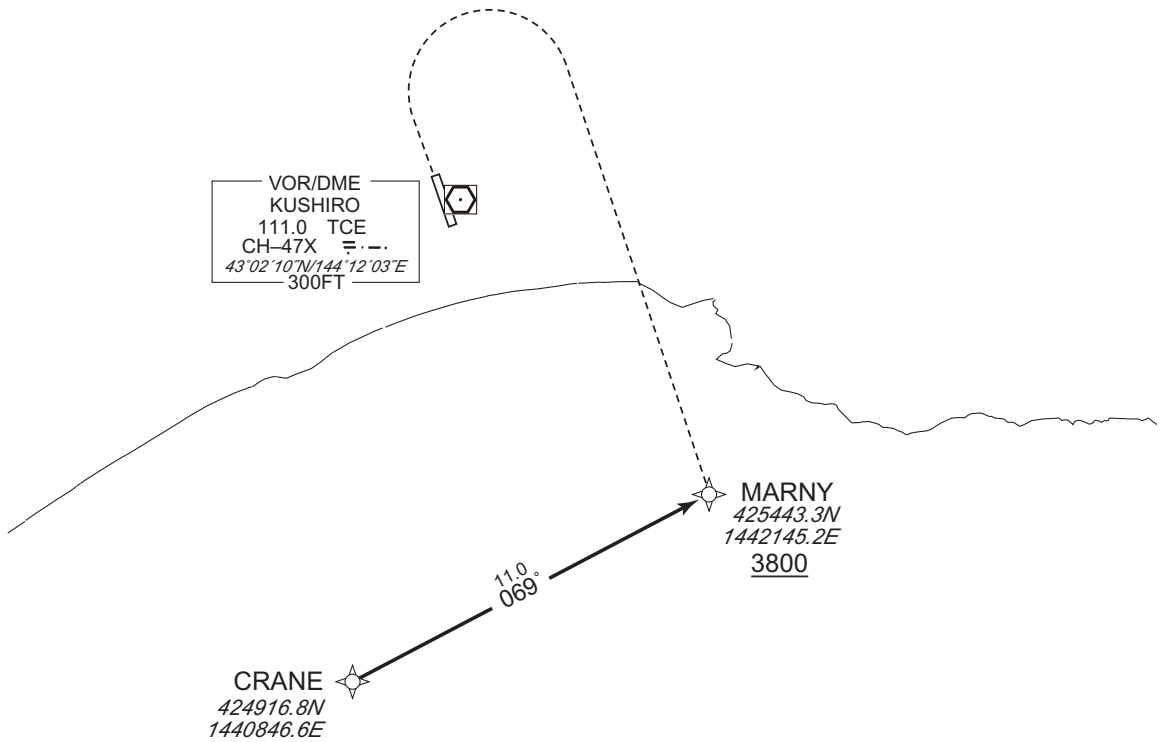
RJCK / KUSHIRO RNAV STAR RWY17

MARNY ARRIVAL

RNP1

Note GNSS required.

VAR 9°W



CHANGE : Navigation Specification(Basic RNP1 → RNP1).

From CRANE, to MARNY at or above 3800FT.

Serial Number	Path Descriptor	Waypoint Identifier	Fly Over	Course °M(°T)	Magnetic Variation	Distance (NM)	Turn Direction	Altitude (FT)	Speed (KIAS)	Vertical Angle	Navigation Specification
001	IF	CRANE	-	-	-9.2	-	-	-	-	-	RNP1
002	TF	MARNY	-	069 (060.2)	-9.2	11.0	-	+3800	-	-	RNP1

INTENTIONALLY LEFT BLANK

STANDARD ARRIVAL CHART -INSTRUMENT

RJCK / KUSHIRO

RNAV STAR RWY17

AKESI ARRIVAL / IGAMO NORTH ARRIVAL RUGMO NORTH ARRIVAL / RUNPA NORTH ARRIVAL	RNP1
--	------

Note GNSS required.

VAR 9°W

RUGMO
430433.6N
1432949.1E



RUGMO NORTH ARRIVAL

19.6
089°

KANPO
430802.7N
1435613.8E
7000



RUNPA NORTH ARRIVAL

RUNPA
425838.2N
1434501.8E



9.8
050°

IGAMO
425112.6N
1433614.5E



IGAMO NORTH ARRIVAL

VOR/DME
KUSHIRO
111.0 TCE
CH-47X
43°02'10"N/144°12'03"E
300FT

35.3
360°

AKESI ARRIVAL

AKESI
423316.4N
1440423.6E
10000



CHANGE : Navigation Specification(Basic RNP1 → RNP1).

STANDARD ARRIVAL CHART -INSTRUMENT

RJCK / KUSHIRO

RNAV STAR RWY17

AKESI ARRIVAL

From AKESI at or above 10000FT, to KANPO at or above 7000FT.

Serial Number	Path Descriptor	Waypoint Identifier	Fly Over	Course °M(°T)	Magnetic Variation	Distance (NM)	Turn Direction	Altitude (FT)	Speed (KIAS)	Vertical Angle	Navigation Specification
001	IF	AKESI	-	-	-9.2	-	-	+10000	-	-	RNP1
002	TF	KANPO	-	360 (350.3)	-9.2	35.3	-	+7000	-	-	RNP1

IGAMO NORTH ARRIVAL

From IGAMO, to RUNPA, to KANPO at or above 7000FT.

Serial Number	Path Descriptor	Waypoint Identifier	Fly Over	Course °M(°T)	Magnetic Variation	Distance (NM)	Turn Direction	Altitude (FT)	Speed (KIAS)	Vertical Angle	Navigation Specification
001	IF	IGAMO	-	-	-9.2	-	-	-	-	-	RNP1
002	TF	RUNPA	-	050 (040.9)	-9.2	9.8	-	-	-	-	RNP1
003	TF	KANPO	-	050 (041.0)	-9.2	12.5	-	+7000	-	-	RNP1

RUGMO NORTH ARRIVAL

From RUGMO at or above 9000FT, to KANPO at or above 7000FT.

Serial Number	Path Descriptor	Waypoint Identifier	Fly Over	Course °M(°T)	Magnetic Variation	Distance (NM)	Turn Direction	Altitude (FT)	Speed (KIAS)	Vertical Angle	Navigation Specification
001	IF	RUGMO	-	-	-9.2	-	-	+9000	-	-	RNP1
002	TF	KANPO	-	089 (079.6)	-9.2	19.6	-	+7000	-	-	RNP1

RUNPA NORTH ARRIVAL

From RUNPA, to KANPO at or above 7000FT.

Serial Number	Path Descriptor	Waypoint Identifier	Fly Over	Course °M(°T)	Magnetic Variation	Distance (NM)	Turn Direction	Altitude (FT)	Speed (KIAS)	Vertical Angle	Navigation Specification
001	IF	RUNPA	-	-	-9.2	-	-	-	-	-	RNP1
002	TF	KANPO	-	050 (041.0)	-9.2	12.5	-	+7000	-	-	RNP1

CHANGE : Navigation Specification(Basic RNP1 → RNP1).

STANDARD ARRIVAL CHART -INSTRUMENT

RJCK / KUSHIRO


RNAV STAR RWY35

IGAMO SOUTH ARRIVAL / RUGMO SOUTH ARRIVAL RUNPA SOUTH ARRIVAL	RNP1
--	------


Note GNSS required.


VAR 9°W

RUGMO SOUTH ARRIVAL



RUGMO
 430433.6N
 1432949.1E
9000


RUNPA SOUTH ARRIVAL



RUNPA
 425838.2N
 1434501.8E


BESRU
 425257.7N
 1435928.5E
7000

VOR/DME
 KUSHIRO
 111.0 TCE
 CH-47X
 43°02'10"N/144°12'03"E
 300FT

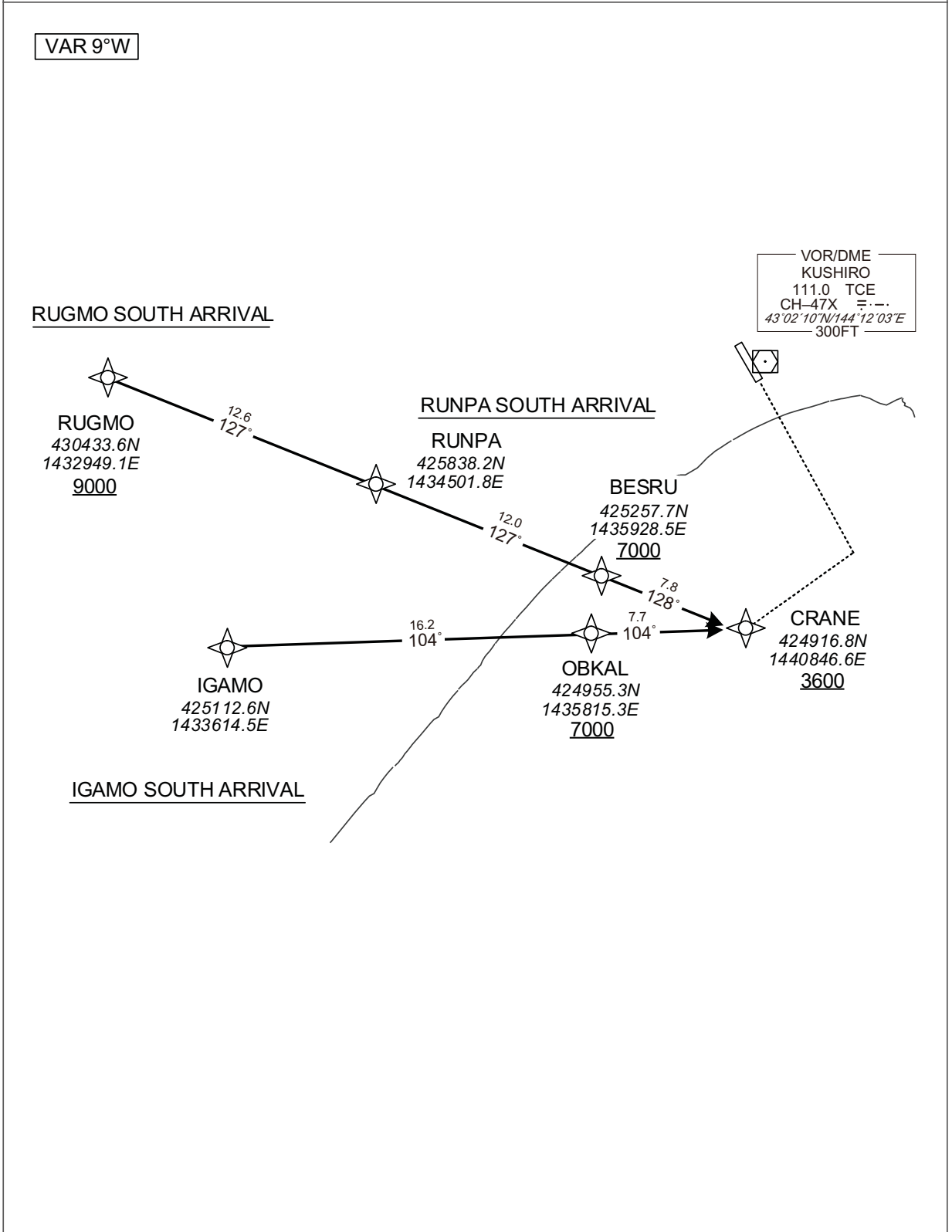

CRANE
 424916.8N
 1440846.6E
3600


IGAMO
 425112.6N
 1433614.5E


OBKAL
 424955.3N
 1435815.3E
7000

IGAMO SOUTH ARRIVAL

CHANGE : Navigation Specification(Basic RNP1 → RNP1).



STANDARD ARRIVAL CHART -INSTRUMENT

RJCK / KUSHIRO

RNAV STAR RWY35

IGAMO SOUTH ARRIVAL

From IGAMO, to OBKAL at or above 7000FT, to CRANE at or above 3600FT.

Serial Number	Path Descriptor	Waypoint Identifier	Fly Over	Course °M(°T)	Magnetic Variation	Distance (NM)	Turn Direction	Altitude (FT)	Speed (KIAS)	Vertical Angle	Navigation Specification
001	IF	IGAMO	-	-	-9.2	-	-	-	-	-	RNP1
002	TF	OBKAL	-	104 (094.4)	-9.2	16.2	-	+7000	-	-	RNP1
003	TF	CRANE	-	104 (094.7)	-9.2	7.7	-	+3600	-	-	RNP1

RUGMO SOUTH ARRIVAL

From RUGMO at or above 9000FT, to RUNPA, to BESRU at or above 7000FT, to CRANE at or above 3600FT.

Serial Number	Path Descriptor	Waypoint Identifier	Fly Over	Course °M(°T)	Magnetic Variation	Distance (NM)	Turn Direction	Altitude (FT)	Speed (KIAS)	Vertical Angle	Navigation Specification
001	IF	RUGMO	-	-	-9.2	-	-	+9000	-	-	RNP1
002	TF	RUNPA	-	127 (118.0)	-9.2	12.6	-	-	-	-	RNP1
003	TF	BESRU	-	127 (118.1)	-9.2	12.0	-	+7000	-	-	RNP1
004	TF	CRANE	-	128 (118.3)	-9.2	7.8	-	+3600	-	-	RNP1

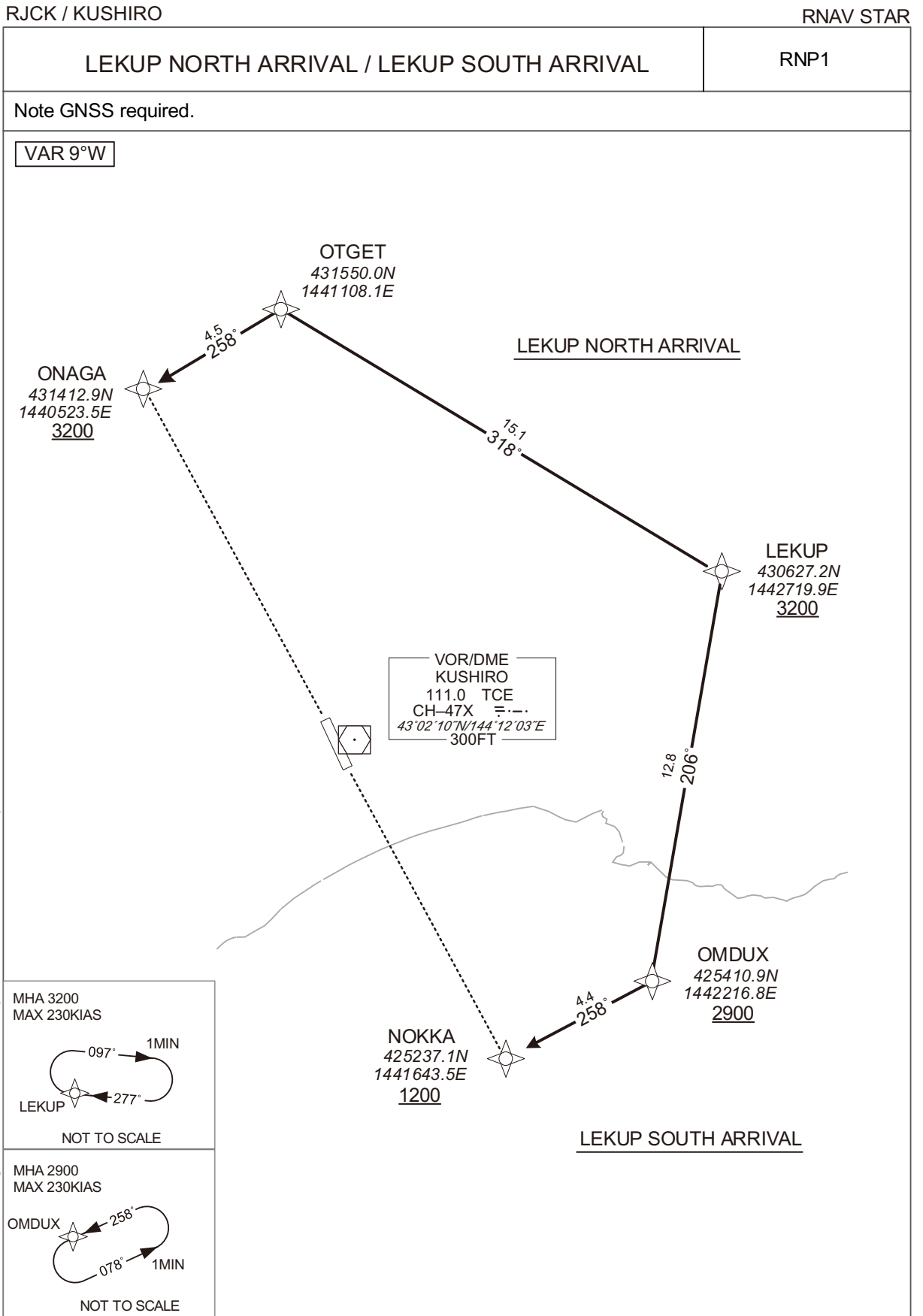
RUNPA SOUTH ARRIVAL

From RUNPA, to BESRU at or above 7000FT, to CRANE at or above 3600FT.

Serial Number	Path Descriptor	Waypoint Identifier	Fly Over	Course °M(°T)	Magnetic Variation	Distance (NM)	Turn Direction	Altitude (FT)	Speed (KIAS)	Vertical Angle	Navigation Specification
001	IF	RUNPA	-	-	-9.2	-	-	-	-	-	RNP1
002	TF	BESRU	-	127 (118.1)	-9.2	12.0	-	+7000	-	-	RNP1
003	TF	CRANE	-	128 (118.3)	-9.2	7.8	-	+3600	-	-	RNP1

CHANGE : Navigation Specification(Basic RNP1 → RNP1).

STANDARD ARRIVAL CHART -INSTRUMENT



STANDARD ARRIVAL CHART -INSTRUMENT

RJCK / KUSHIRO

RNAV STAR

LEKUP NORTH ARRIVAL

From LEKUP at or above 3200FT, to OTGET, to ONAGA at or above 3200FT.

Serial Number	Path Descriptor	Waypoint Identifier	Fly Over	Course °M(°T)	Magnetic Variation	Distance (NM)	Turn Direction	Altitude (FT)	Speed (KIAS)	Vertical Angle	Navigation Specification
001	IF	LEKUP	-	-	-9.2	-	-	+3200	-	-	RNP1
002	TF	OTGET	-	318 (308.5)	-9.2	15.1	-	-	-	-	RNP1
003	TF	ONAGA	-	258 (248.9)	-9.2	4.5	-	+3200	-	-	RNP1

Path	Waypoint Identifier	Inbound Course °M(°T)	Magnetic Variation	Outbound Time (MIN)	Turn Direction	Minimum Altitude (FT)	Maximum Altitude (FT)	Speed (KIAS)	Navigation Specification
Hold	LEKUP	277 (268.1)	-9.2	1.0(-14000)	R	3200	FL140	-230(-14000)	RNP1

LEKUP SOUTH ARRIVAL

From LEKUP at or above 3200FT, to OMDUX at or above 2900FT,
to NOKKA at or above 1200FT.

Serial Number	Path Descriptor	Waypoint Identifier	Fly Over	Course °M(°T)	Magnetic Variation	Distance (NM)	Turn Direction	Altitude (FT)	Speed (KIAS)	Vertical Angle	Navigation Specification
001	IF	LEKUP	-	-	-9.2	-	-	+3200	-	-	RNP1
002	TF	OMDUX	-	206 (196.8)	-9.2	12.8	-	+2900	-	-	RNP1
003	TF	NOKKA	-	258 (249.0)	-9.2	4.4	-	+1200	-	-	RNP1

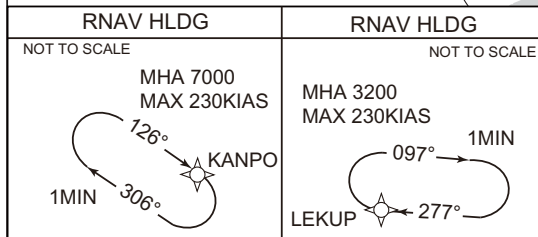
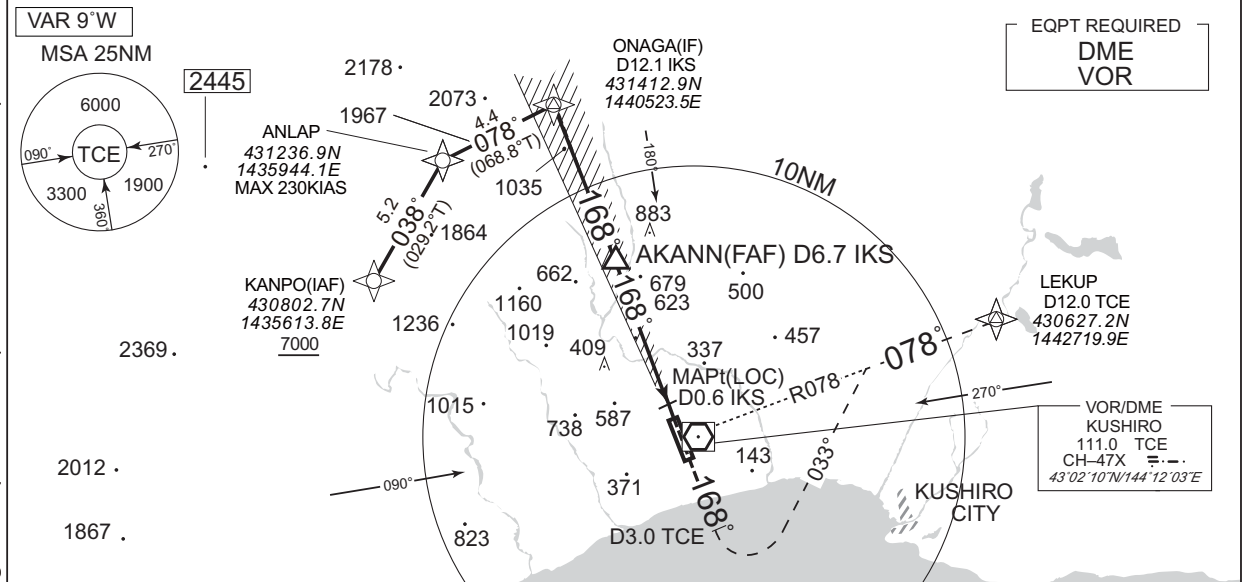
Path	Waypoint Identifier	Inbound Course °M(°T)	Magnetic Variation	Outbound Time (MIN)	Turn Direction	Minimum Altitude (FT)	Maximum Altitude (FT)	Speed (KIAS)	Navigation Specification
Hold	LEKUP	277 (268.1)	-9.2	1.0(-14000)	R	3200	FL140	-230(-14000)	RNP1
Hold	OMDUX	258 (249.0)	-9.2	1.0(-14000)	L	2900	FL140	-230(-14000)	RNP1

CHANGE : Navigation Specification(Basic RNP1 → RNP1).

INSTRUMENT APPROACH CHART

RJCK / KUSHIRO ILS Z or LOC Z RWY17 (CAT III)

HIDAKA APP 128.325 - 246.1 - 134.55	ILS-LOC 108.9 IKS ::- ILS-GP 329.3 ILS-DME CH-26X	KUSHIRO TOWER 118.05 - 126.2	RADAR AVBL
--	--	---------------------------------	------------

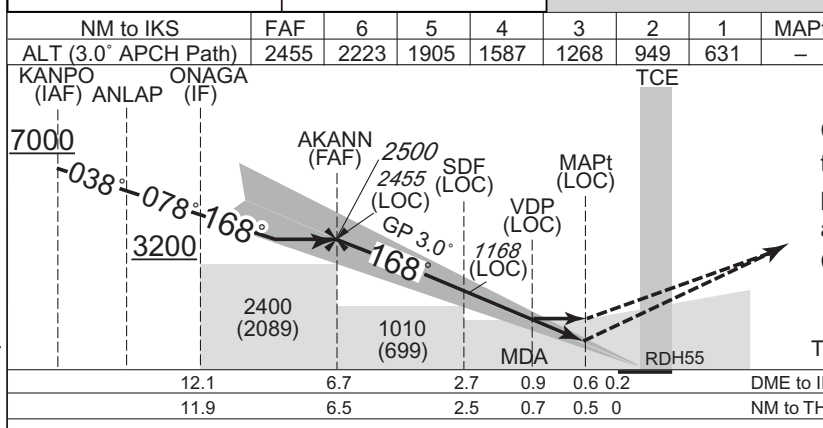


EQPT REQUIRED
DME
VOR

VOR/DME
KUSHIRO
111.0 TCE
CH-47X ::-
43°02'10"N/144°12'03"E

NOTE: For Initial approach segment
(1) RNP1.
(2) GNSS required.

AKANN(FAF): 430911.57N/1440802.37E



MISSED APPROACH
Climb on HDG 168° to TCE 3.0DME,
turn left HDG033° to intercept and
proceed via TCE R078 to LEKUP
and hold at 3200FT.
Contact HIDAKA APP.

Timing not authorized for defining the MAPt.

12.1	6.7	2.7	0.9	0.6	0.2	DME to IKS
11.9	6.5	2.5	0.7	0.5	0	NM to THR

MINIMA		THR elev. 323			AD elev. 311					
CAT	CAT III	CAT II			CAT I		LOC	CIRCLING		
	RVR	DA(H)	RA	RVR	DA(H)	RVR/CMV	MDA(H)	RVR/CMV	MDA(H)	VIS
A	100	Not applicable.			523 (200)	550	590 (279)	800	730 (419)	1600
B									770 (459)	
C									870 (559)	3200
D										

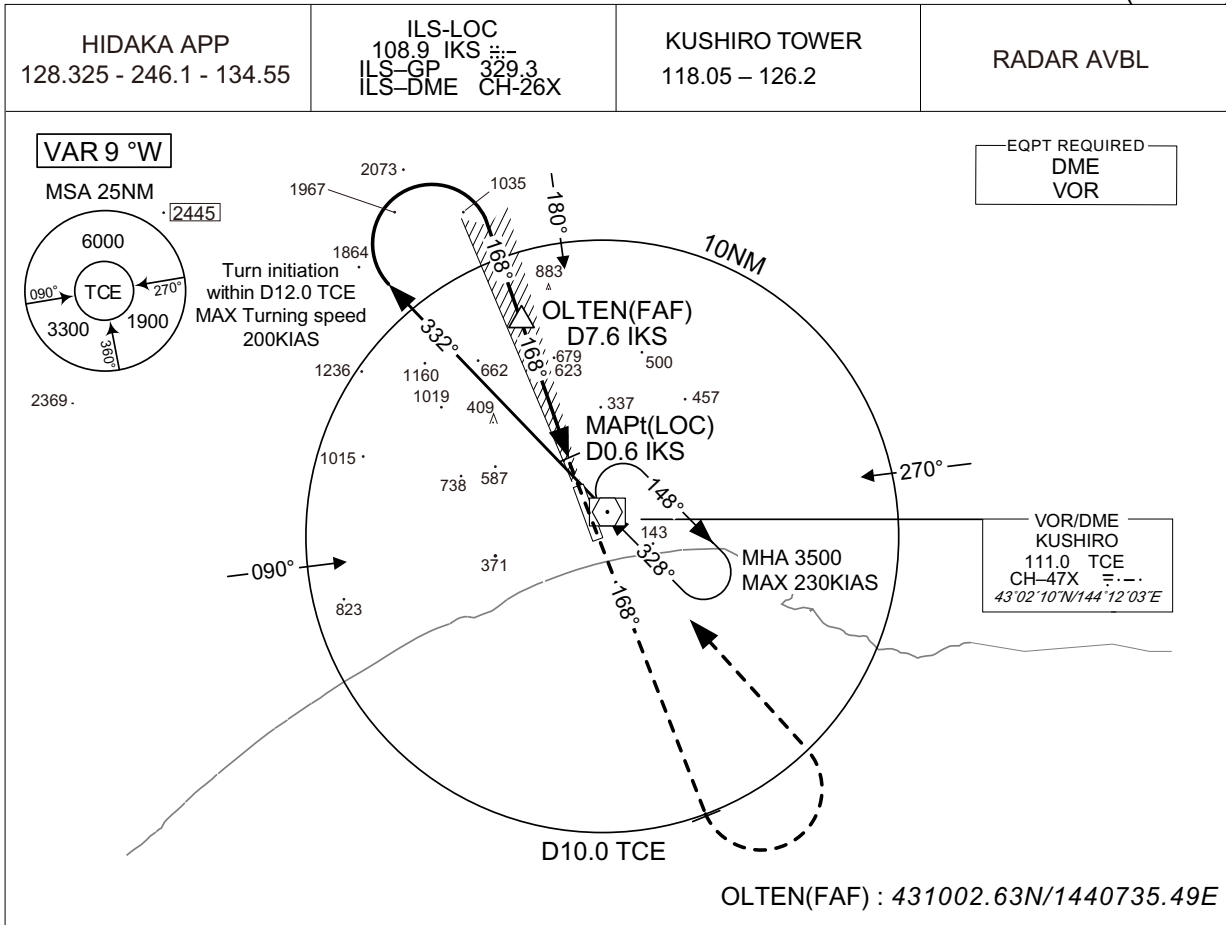
Circling to EAST side of RWY only.
Values of RA may increase or decrease rapidly affected by terrain between IKS 0.4DME and 0.8DME.

CHANGE : ATC call sign and FREQ. Description of RADAR Service. Missed APCH PROC. Navigation Specification(Basic RNP1 → RNP1).

INSTRUMENT APPROACH CHART

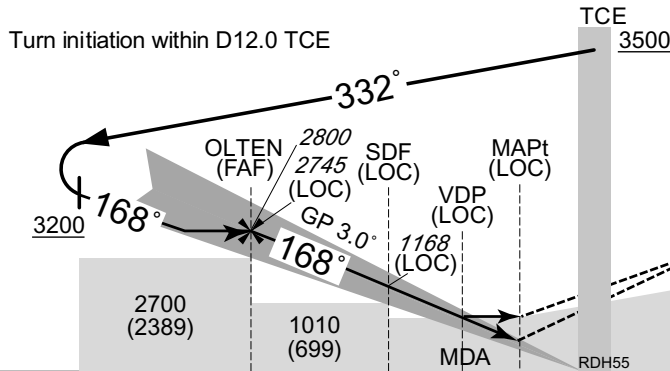
RJCK / KUSHIRO

ILS Y or LOC Y RWY17 (CAT III)



OLTEN(FAF) : 431002.63N/1440735.49E

NM to IKS	FAF	7	6	5	4	3	2	1	MAPt
ALT (3.0° APCH Path)	2745	2542	2223	1905	1587	1268	949	631	-



MISSED APPROACH
Climb on HDG 168° to TCE 10.0DME, turn left, direct to TCE VOR/DME and hold at 3500FT.
Contact HIDAKA APP.

Timing not authorized for defining the MAPt.

	7.6	2.7	0.9	0.6	0.2	DME to IKS
	7.5	2.5	0.7	0.5	0	NM to THR

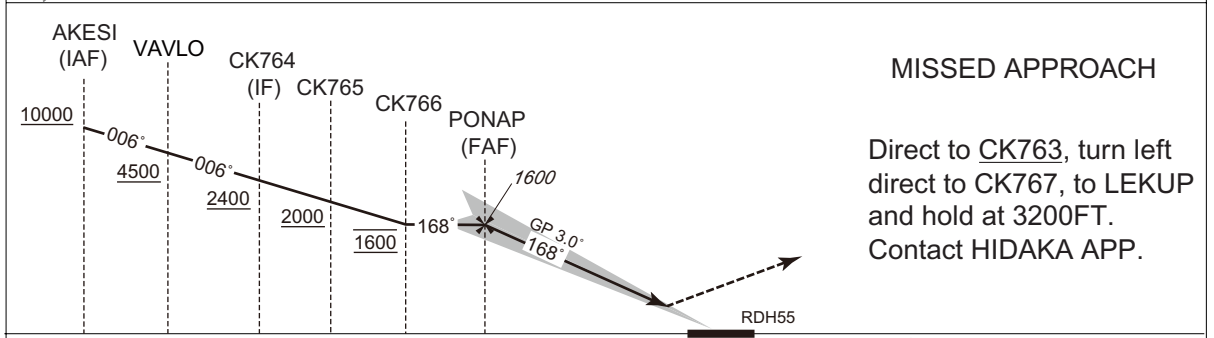
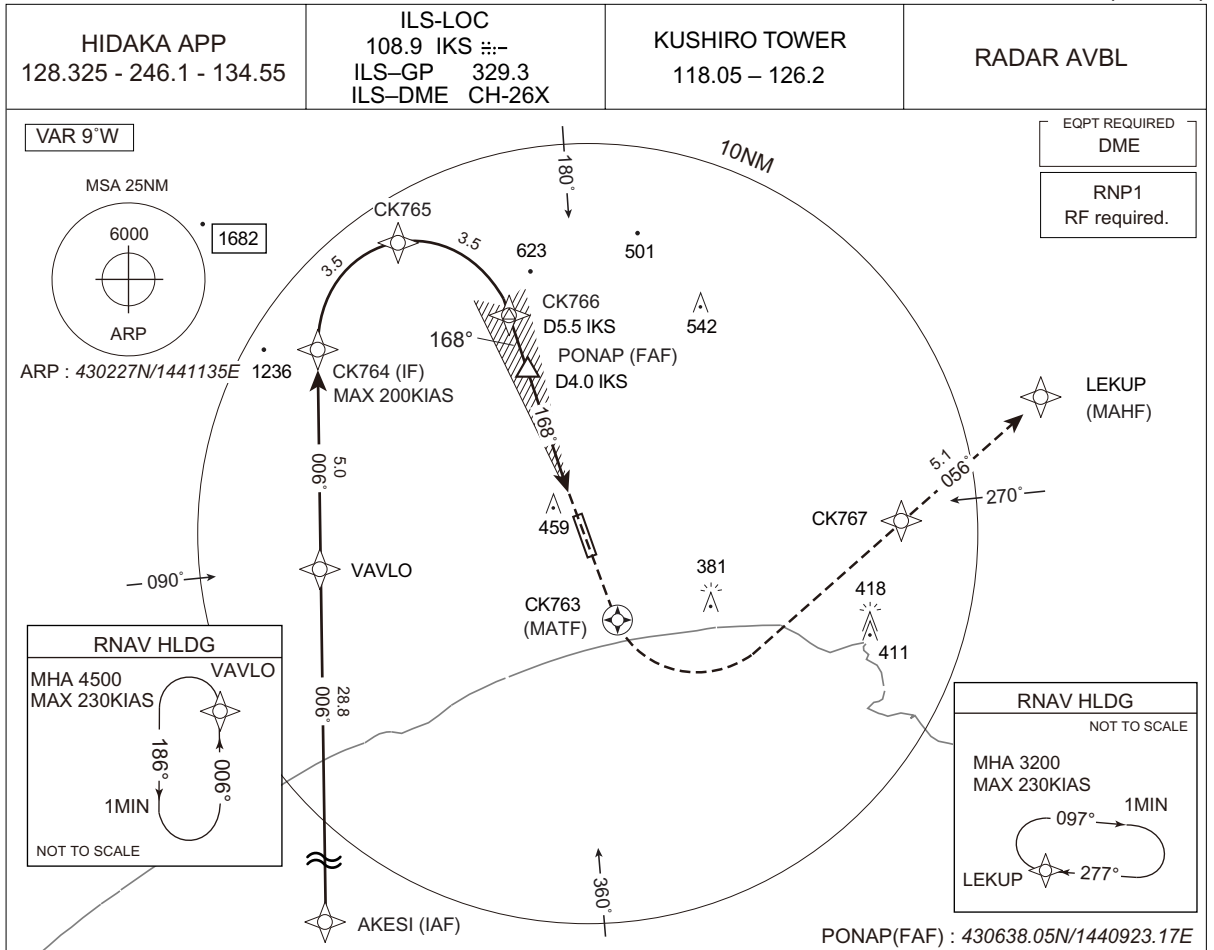
MINIMA		THR elev. 323			AD elev. 311		LOC		CIRCLING	
CAT	CAT III	CAT II		CAT I		LOC		CIRCLING		
	RVR	DA(H)	RA	RVR	DA(H)	RVR/CMV	MDA(H)	RVR/CMV	MDA(H)	VIS
A									730 (419)	1600
B									770 (459)	
C	100	Not applicable.			523 (200)	550	590 (279)	800	770 (459)	2400
D								1200	870 (559)	3200

Circling to EAST side of RWY only.
Values of RA may increase or decrease rapidly affected by terrain between IKS 0.4DME and 0.8DME.

CHANGE : ATC call sign and FREQ. Description of RADAR Service. Missed APCH PROC.

INSTRUMENT APPROACH CHART

RJCK / KUSHIRO ILS X RWY17(CAT III)



5.5	4.0	0.2	DME to IKS
5.3	3.8	0	NM to THR

Missed APCH climb gradient MNM 4.0%

MINIMA		THR elev. 323		AD elev. 311			
CAT	CAT III	CAT II		CAT I		CIRCLING	
	RVR	DA(H)	RA	RVR	DA(H)	RVR/ CMV	MDA(H) VIS
A							730 (419) 1600
B							770 (459) 2400
C	100	Not applicable.		523 (200)	550		870 (559) 3200
D							

MINIMA with Missed APCH climb gradient of 2.5% are not established.
 Circling to EAST side of RWY only.
 Values of RA may increase or decrease rapidly affected by terrain between IKS 0.4DME and 0.8DME.

CHANGE : New PROC.

INSTRUMENT APPROACH CHART

RJCK / KUSHIRO

ILS X RWY17(CATⅢ)

Coding Table

Serial Number	Path Descriptor	Waypoint Identifier	Fly Over	Course °M(°T)	Magnetic Variation	Distance (NM)	Turn Direction	Altitude (FT)	Speed (KIAS)	Vertical Angle	Navigation Specification
001	IF	AKESI	-	-	-9.3	-	-	+10000	-	-	RNP1
002	TF	VAVLO	-	006 (357.1)	-9.3	28.8	-	+4500	-	-	RNP1
003	TF	CK764	-	006 (357.0)	-9.3	5.0	-	+2400	-200	-	RNP1
004	RF Center: CKRF3 r=2.51NM	CK765	-	-	-9.3	3.5	R	+2000	-	-	RNP1
005	RF Center: CKRF3 r=2.51NM	CK766	-	-	-9.3	3.5	R	1600	-	-	RNP1
001	DF	CK763	Y	-	-9.3	-	-	-	-	-	RNP1
002	DF	CK767	-	-	-9.3	-	L	-	-	-	RNP1
003	TF	LEKUP	-	056 (046.9)	-9.3	5.1	-	3200	-	-	RNP1

Path	Waypoint Identifier	Inbound Course °M(°T)	Magnetic Variation	Outbound Time (MIN)	Turn Direction	Minimum Altitude (FT)	Maximum Altitude (FT)	Speed (KIAS)	Navigation Specification
Hold	VAVLO	006 (357.0)	-9.3	1.0(-14000)	L	4500	FL140	-230(-14000)	RNP1
Hold	LEKUP	277 (268.1)	-9.3	1.0(-14000)	R	3200	FL140	-230(-14000)	RNP1

Waypoint Coordinates

Waypoint Identifier	Coordinates	RF Arc Center Identifier	Coordinates
AKESI	423316.40N / 1440423.57E	CKRF3	430707.83N / 1440527.18E
VAVLO	430200.49N / 1440223.10E		
CK764	430700.07N / 1440201.89E		
CK765	430935.11N / 1440444.33E		
CK766	430802.03N / 1440839.00E		
CK763	430017.29N / 1441242.98E		
CK767	430257.41N / 1442212.36E		
LEKUP	430627.23N / 1442719.94E		

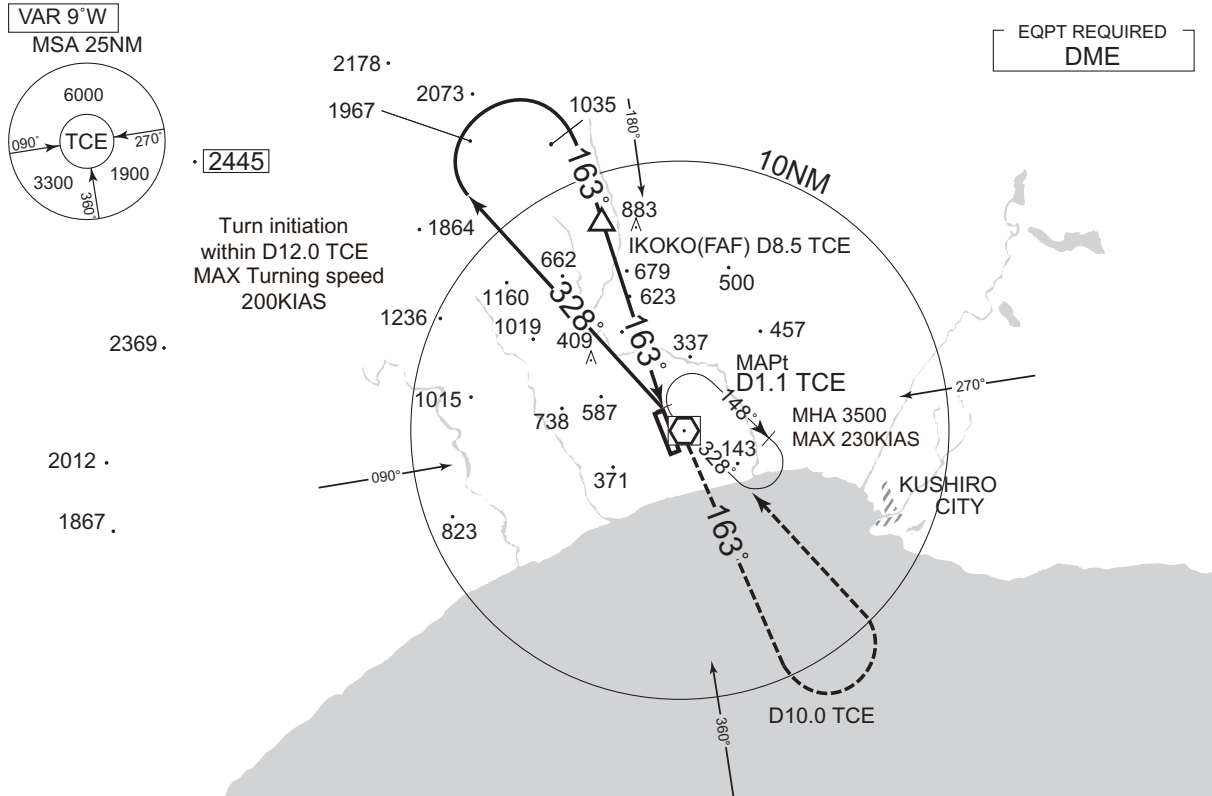
CHANGE : New PROC.

INSTRUMENT APPROACH CHART

RJCK / KUSHIRO

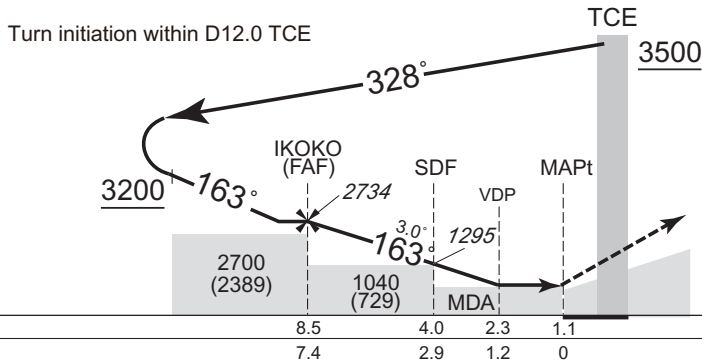
VOR RWY17

HIDAKA APP 128.325 - 246.1 - 134.55	KUSHIRO VOR/DME 111.0 TCE CH-47X $\overline{\text{---}}$ 43°02'10"N/144°12'03"E	KUSHIRO TOWER 118.05 – 126.2	RADAR AVBL
--	--	---------------------------------	------------



NM to TCE	FAF	8	7	6	5	4	3	MAPt
ALT (3.0° APCH Path)	2734	2574	2256	1938	1619	1301	982	-

IKOKO(FAF) : 430947.89N/1440656.90E



MISSED APPROACH

Climb via TCE R163 to TCE 10.0DME, turn left, direct to TCE VOR/DME and hold at 3500FT.
Contact HIDAKA APP.

Timing not authorized for defining the MAPt.

MINIMA THR elev. 323 AD elev. 311

CAT	CIRCLING		MDA(H)	VIS
	MDA(H)	RVR/CMV		
A	740 (429)	900	780 (469)	1600
B		1000		870 (559)
C			1400	
D				

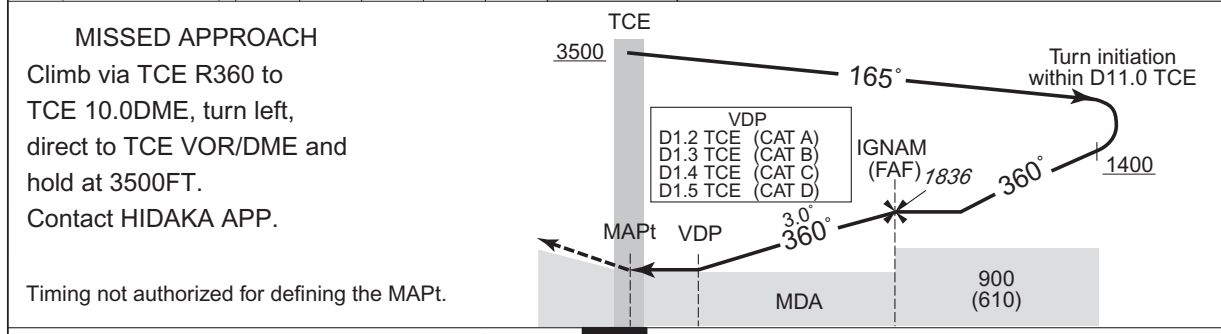
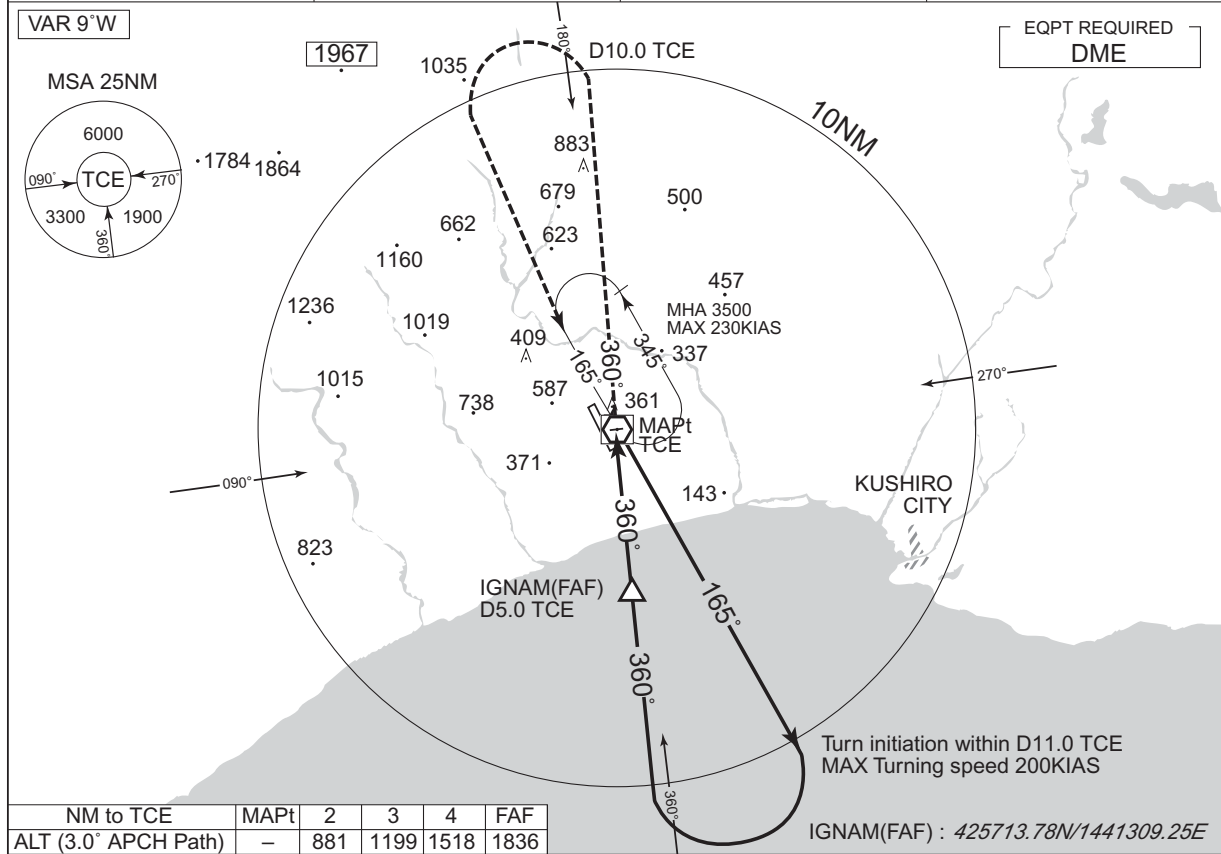
Circling to EAST side of RWY only.

INSTRUMENT APPROACH CHART

RJCK / KUSHIRO

VOR RWY35

HIDAKA APP 128.325 - 246.1 - 134.55	KUSHIRO VOR/DME 111.0 TCE CH-47X 43°02'10"N/144°12'03"E	KUSHIRO TOWER 118.05 - 126.2	RADAR AVBL
--	--	---------------------------------	------------



DME to TCE	0.3	5.0
NM to THR	0	4.7

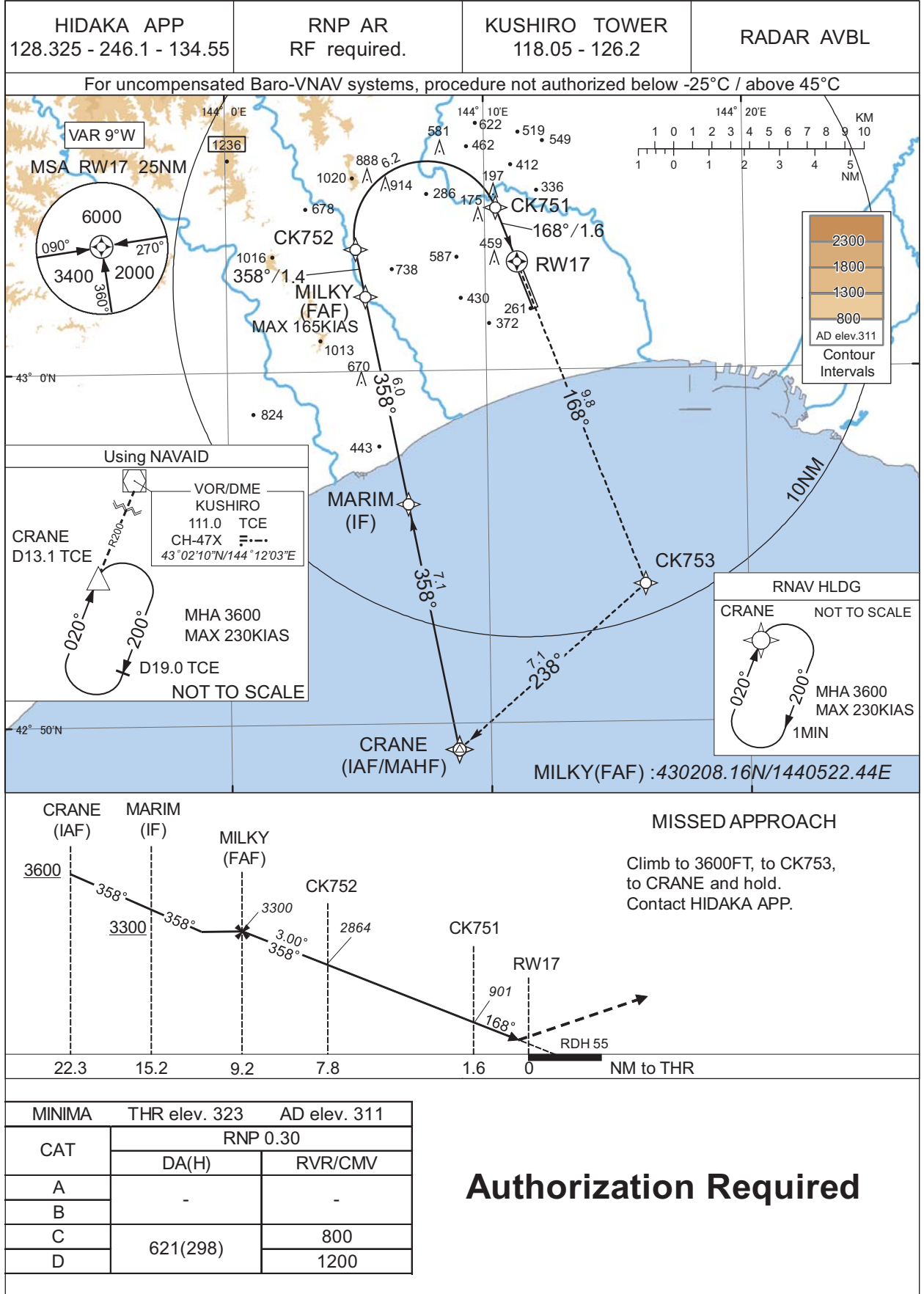
MINIMA		THR elev. 290	AD elev. 311	
CAT	MDA(H)		CIRCLING	
	RVR/CMV	MDA(H)	VIS	
A	640 (350)	1200	730 (419)	1600
B	670 (380)	1300	770 (459)	
C	700 (410)	1400		2400
D	720 (430)	1600	870 (559)	3200

Circling to EAST side of RWY only.

INSTRUMENT APPROACH CHART

RJCK / KUSHIRO

RNP Z RWY17(AR)





INSTRUMENT APPROACH CHART

RJCK / KUSHIRO

RNP Z RWY17(AR)

Coding Table

Serial Number	Path Descriptor	Waypoint Identifier	Fly Over	Course °M(°T)	Magnetic Variation	Distance (NM)	Turn Direction	Altitude (FT)	Speed (KIAS)	VPA/ RDH (°/FT)	RNP Value
001	IF	CRANE	—	—	-9.2	—	—	+3600	—	—	—
002	TF	MARIM	—	358 (349.1)	-9.2	7.1	—	+3300	—	—	1.0
003	TF	MILKY	—	358 (349.0)	-9.2	6.0	—	3300	-165	—	1.0
004	TF	CK752	—	358 (349.0)	-9.2	1.4	—	2864	—	-3.00	0.3
005	RF Center: CKRF1 r=2.08NM	CK751	—	—	-9.2	6.2	R	901	—	-3.00	0.3
006	TF	RW17	Y	168 (159.0)	-9.2	1.6	—	378	—	-3.00/55	0.3
007	TF	CK753	—	168 (159.0)	-9.2	9.8	—	—	—	—	1.0
008	TF	CRANE	—	238 (229.0)	-9.2	7.1	—	3600	—	—	1.0

Path	Waypoint Identifier	Inbound Course °M(°T)	Magnetic Variation	Outbound Time (MIN)	Turn Direction	Minimum Altitude (FT)	Maximum Altitude (FT)	Speed (KIAS)	RNP Value
Hold	CRANE	020 (010.5)	-9.2	1.0(-14000)	R	3600	FL140	-230(-14000)	1.0

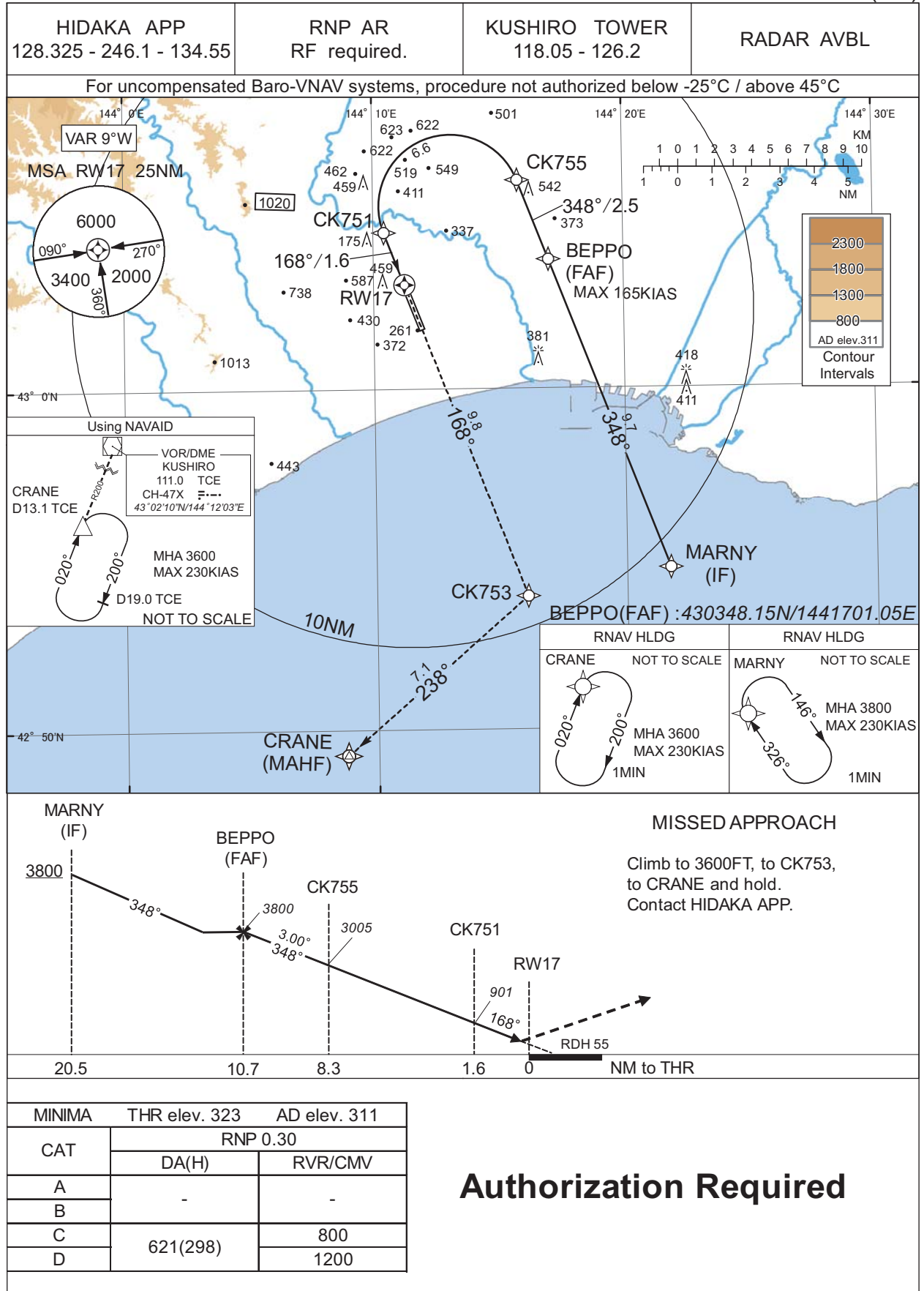
Waypoint Coordinates

Waypoint Identifier	Coordinates	RF Arc Center Identifier	Coordinates
CRANE	424916.84N / 1440846.59E	CKRF1	430352.65N / 1440747.87E
MARIM	425614.81N / 1440656.16E		
MILKY	430208.16N / 1440522.44E		
CK752	430328.83N / 1440501.00E		
CK751	430437.47N / 1441026.54E		
RW17	430305.30N / 1441114.92E		
CK753	425355.48N / 1441602.58E		

INSTRUMENT APPROACH CHART

RJCK / KUSHIRO

RNP Y RWY17(AR)



INSTRUMENT APPROACH CHART

RJCK / KUSHIRO

RNP Y RWY17(AR)

Coding Table

Serial Number	Path Descriptor	Waypoint Identifier	Fly Over	Course °M(°T)	Magnetic Variation	Distance (NM)	Turn Direction	Altitude (FT)	Speed (KIAS)	VPA/ RDH (°/FT)	RNP Value
001	IF	MARNY	—	—	-9.2	—	—	+3800	—	—	—
002	TF	BEPP0	—	348 (339.1)	-9.2	9.7	—	3800	-165	—	1.0
003	TF	CK755	—	348 (339.1)	-9.2	2.5	—	3005	—	-3.00	0.3
004	RF Center: CKRF2 r=2.10NM	CK751	—	—	-9.2	6.6	L	901	—	-3.00	0.3
005	TF	RW17	Y	168 (159.0)	-9.2	1.6	—	378	—	-3.00/55	0.3
006	TF	CK753	—	168 (159.0)	-9.2	9.8	—	—	—	—	1.0
007	TF	CRANE	—	238 (229.0)	-9.2	7.1	—	3600	—	—	1.0

Path	Waypoint Identifier	Inbound Course °M(°T)	Magnetic Variation	Outbound Time (MIN)	Turn Direction	Minimum Altitude (FT)	Maximum Altitude (FT)	Speed (KIAS)	RNP Value
Hold	CRANE	020 (010.5)	-9.2	1.0(-14000)	R	3600	FL140	-230(-14000)	1.0
Hold	MARNY	326 (316.4)	-9.2	1.0(-14000)	R	3800	FL140	-230(-14000)	1.0

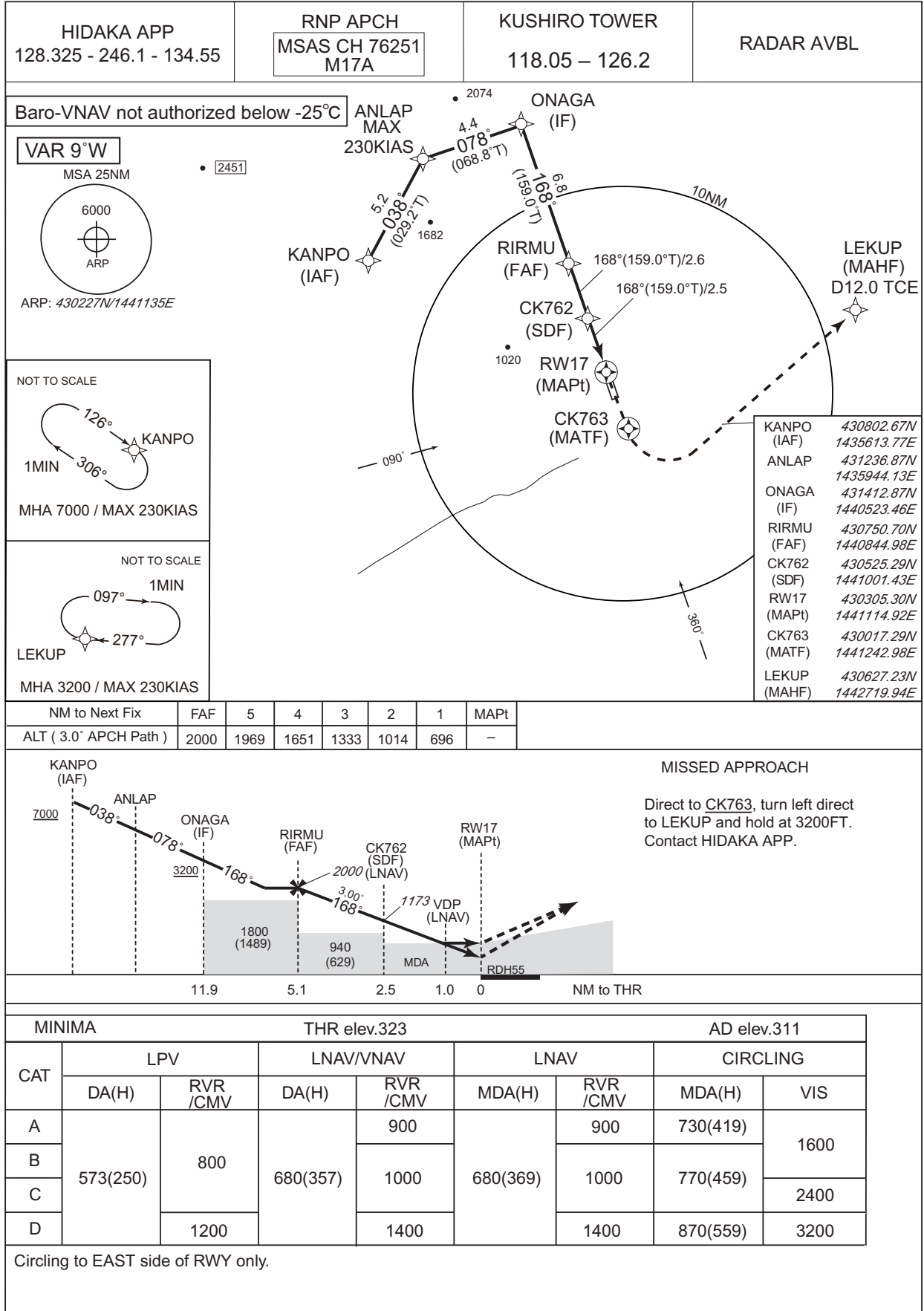
Waypoint Coordinates

Waypoint Identifier	Coordinates	RF Arc Center Identifier	Coordinates
MARNY	425443.27N / 1442145.22E	CKRF2	430522.76N / 1441307.17E
BEPP0	430348.15N / 1441701.05E		
CK755	430607.99N / 1441547.87E		
CK751	430437.47N / 1441026.54E		
RW17	430305.30N / 1441114.92E		
CK753	425355.48N / 1441602.58E		
CRANE	424916.84N / 1440846.59E		

INSTRUMENT APPROACH CHART

RJCK / KUSHIRO

RNP X RWY17



INSTRUMENT APPROACH CHART

RJCK /KUSHIRO

RNP X RWY17

FAS DATA BLOCK

Operation type	0	LTP/FTP ellipsoidal height	+01279
SBAS service provider identifier	2	FPAP latitude	430149.6680N
Airport identifier	RJCK	FPAP longitude	1441154.5465E
Runway	17	Threshold crossing height	00016.7
Approach performance designator	0	TCH units selector	1
Route indicator	X	Glide path angle	03.00
Reference path data selector	0	Course width at threshold	105.00
Reference path ID	M17A	∠ length offset	0000
LTP/FTP latitude	430305.2840N	HAL	40.0
LTP/FTP longitude	1441114.8770E	VAL	50.0
CRC remainder	A0B919FD		

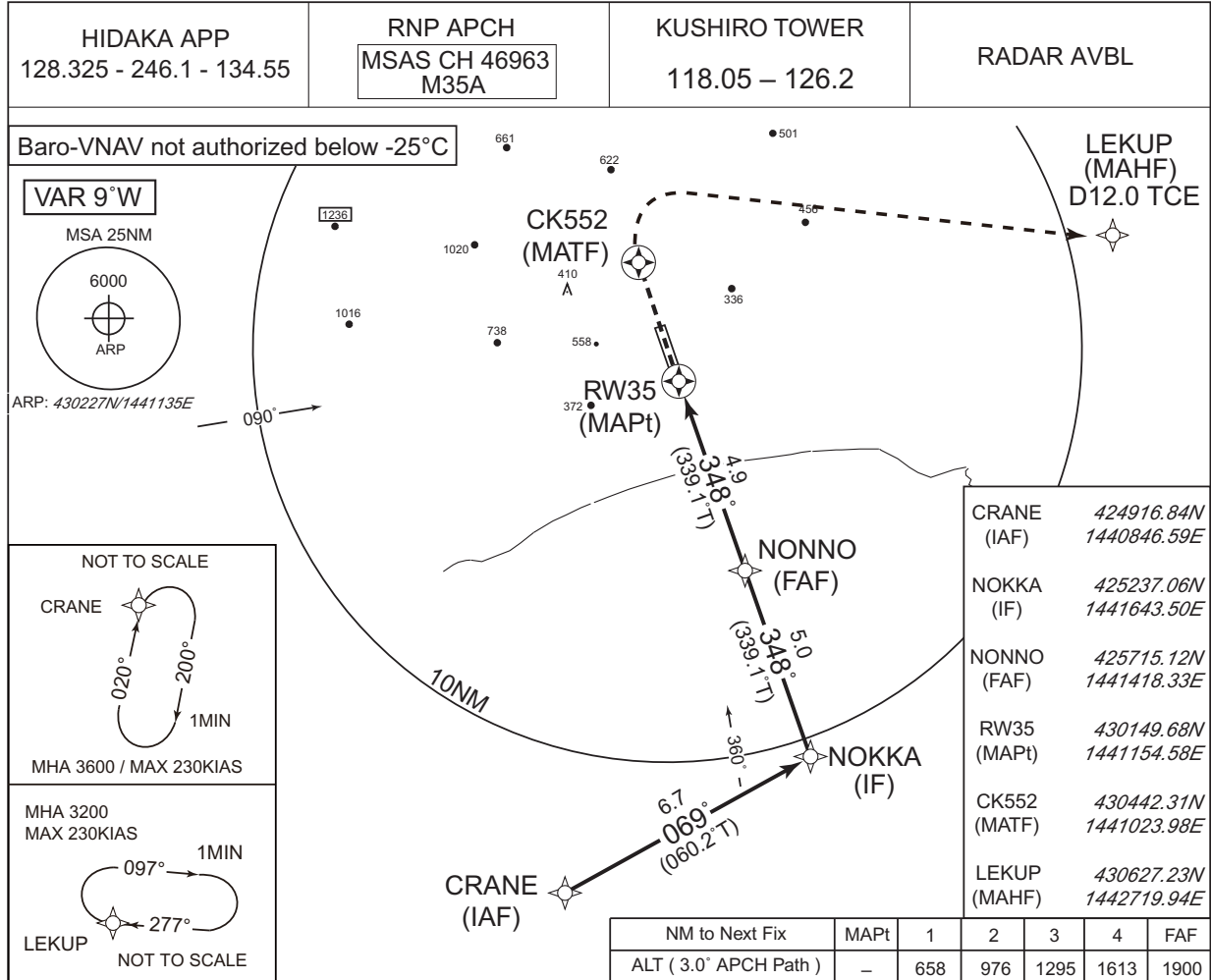
Required additional data

LTP/FTP orthometric height	98.0
----------------------------	------

INSTRUMENT APPROACH CHART

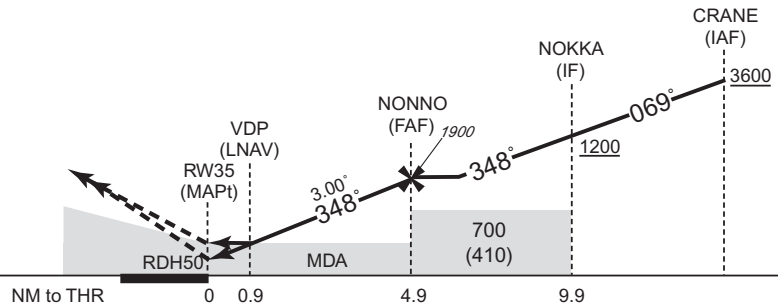
RJCK / KUSHIRO

RNP RWY35



MISSED APPROACH

Climb direct to CK552, turn right direct to LEKUP and hold at 3200FT.
Contact HIDAKA APP.



Missed APCH climb gradient MNM 3.0%

MINIMA		THR elev.290				AD elev.311		
CAT	LPV		LNAV/VNAV		LNAV		CIRCLING	
	DA(H)	RVR /CMV	DA(H)	RVR /CMV	MDA(H)	RVR /CMV	MDA(H) VIS	
A	540(250)	1000	630(340)	1200	630(340)	1200	730(419)	1600 2400 3200
B		1100		1300		1300	770(459)	
C		1200		1400		1400		
D		1400		1600		1600	870(559)	

MINIMA with Missed APCH climb gradient of 2.5% are not established.
Circling to EAST side of RWY only.

INSTRUMENT APPROACH CHART

RJCK /KUSHIRO

RNP RWY35

FAS DATA BLOCK

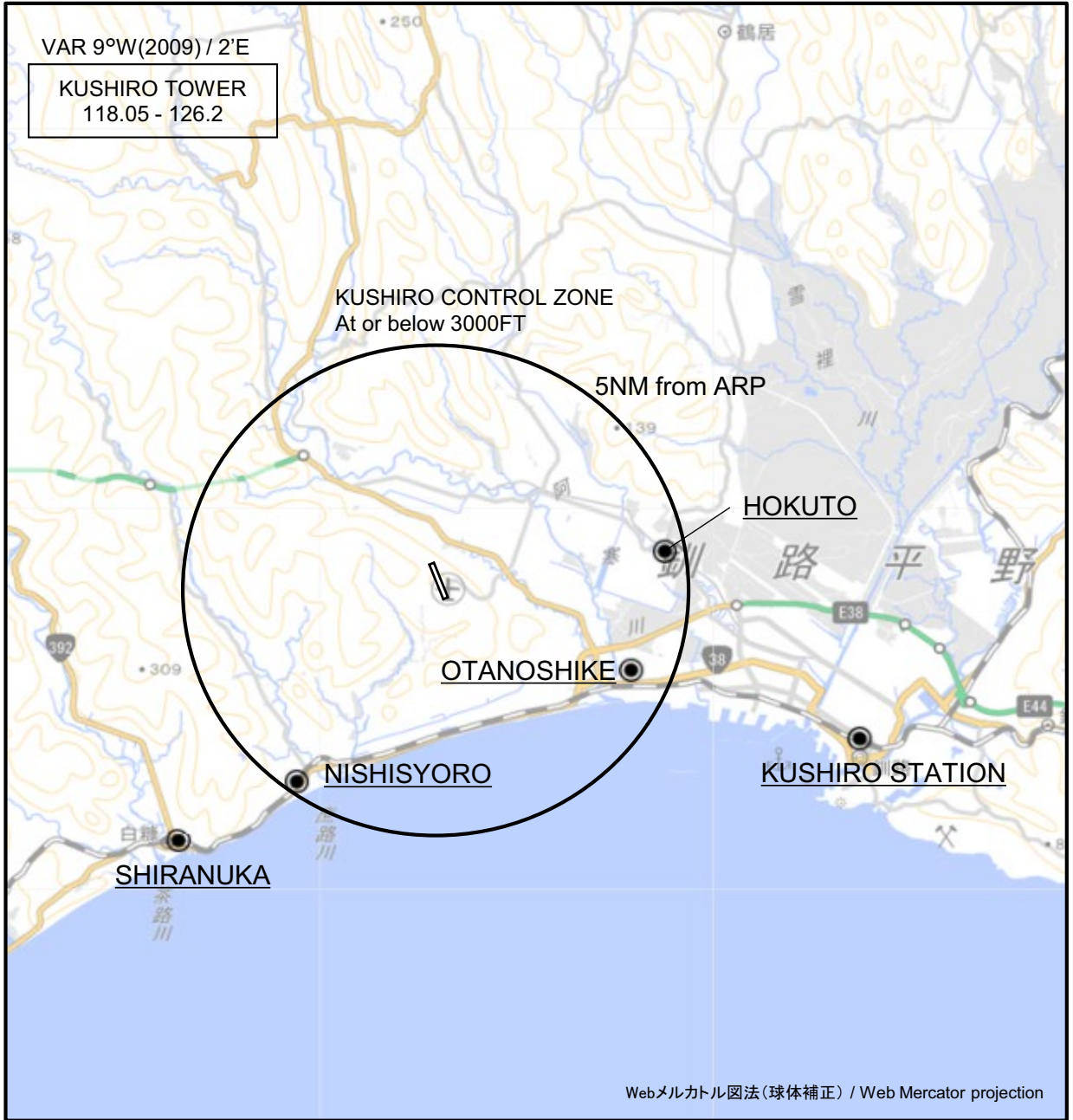
Operation type	0	LTP/FTP ellipsoidal height	+01179
SBAS service provider identifier	2	FPAP latitude	430305.2840N
Airport identifier	RJCK	FPAP longitude	1441114.8770E
Runway	35	Threshold crossing height	00015.0
Approach performance designator	0	TCH units selector	1
Route indicator		Glide path angle	03.00
Reference path data selector	0	Course width at threshold	105.00
Reference path ID	M35A	∠ length offset	0000
LTP/FTP latitude	430149.6680N	HAL	40.0
LTP/FTP longitude	1441154.5465E	VAL	50.0
CRC remainder	F9C3454C		

Required additional data

LTP/FTP orthometric height	88.1
----------------------------	------

RJCK / KUSHIRO

Visual REP



※図中に標高を示す数字がある場合、単位はメートル(m)である。The unit of measurement used to express elevation is meter(m).

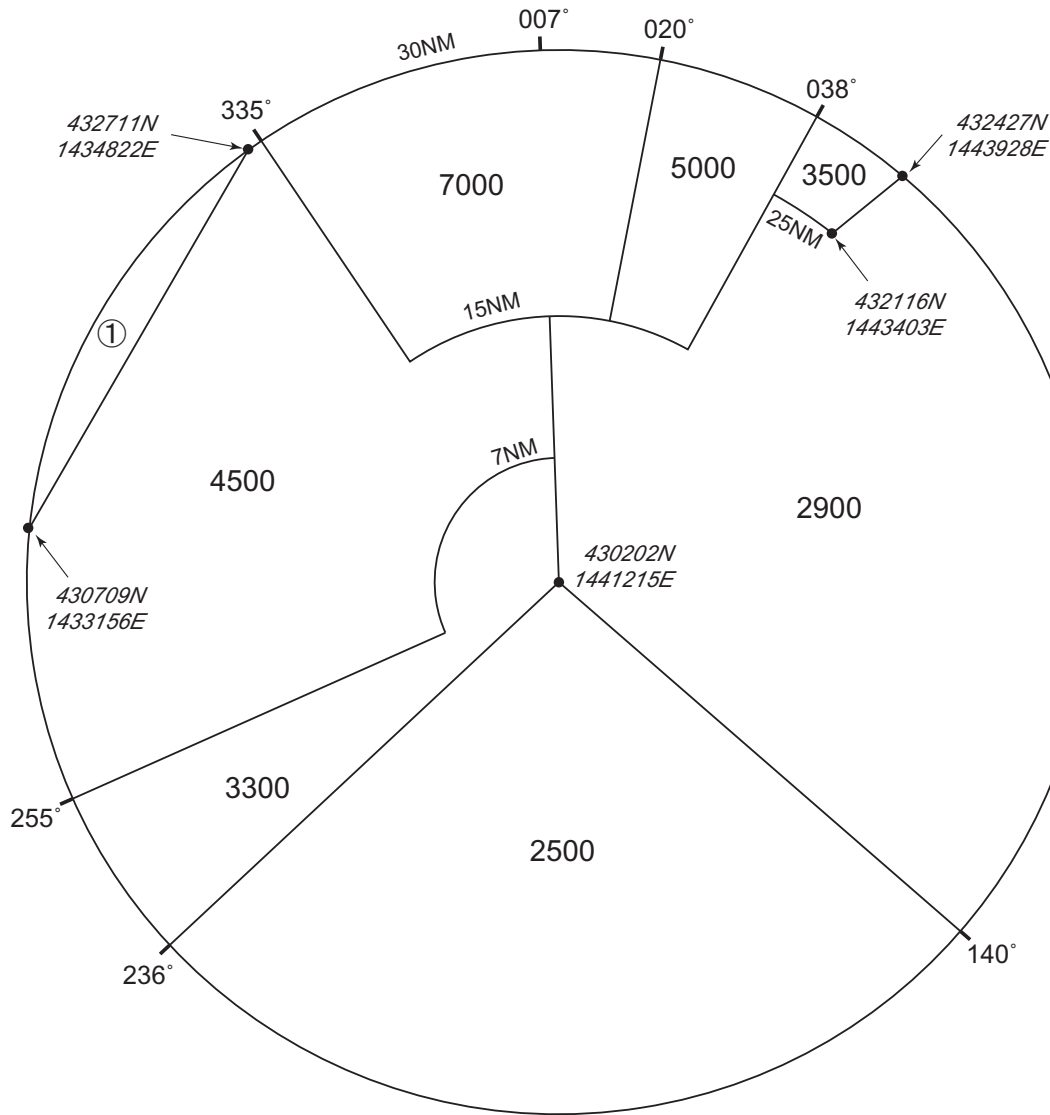
CHANGE : Map updated. BRG/DIST from ARP.

Call sign	BRG / DIST from ARP	Remarks
北斗 Hokuto	080°T / 4.6NM	T字路交差点 Intersection
大楽毛 Otanoshike	113°T / 4.2NM	製紙工場煙突群 Chimneys
釧路ステーション Kushiro Station	110°T / 8.8NM	JR駅 Station
西庶路 Nishisyoro	215°T / 4.7NM	JR駅 Station
白糖 Shiranuka	225°T / 7.2NM	JR駅 Station

RJCK / KUSHIRO

Minimum Vectoring Altitude CHART

VAR 9°W (2007)



① 7000

CHANGE : KSE deleted.