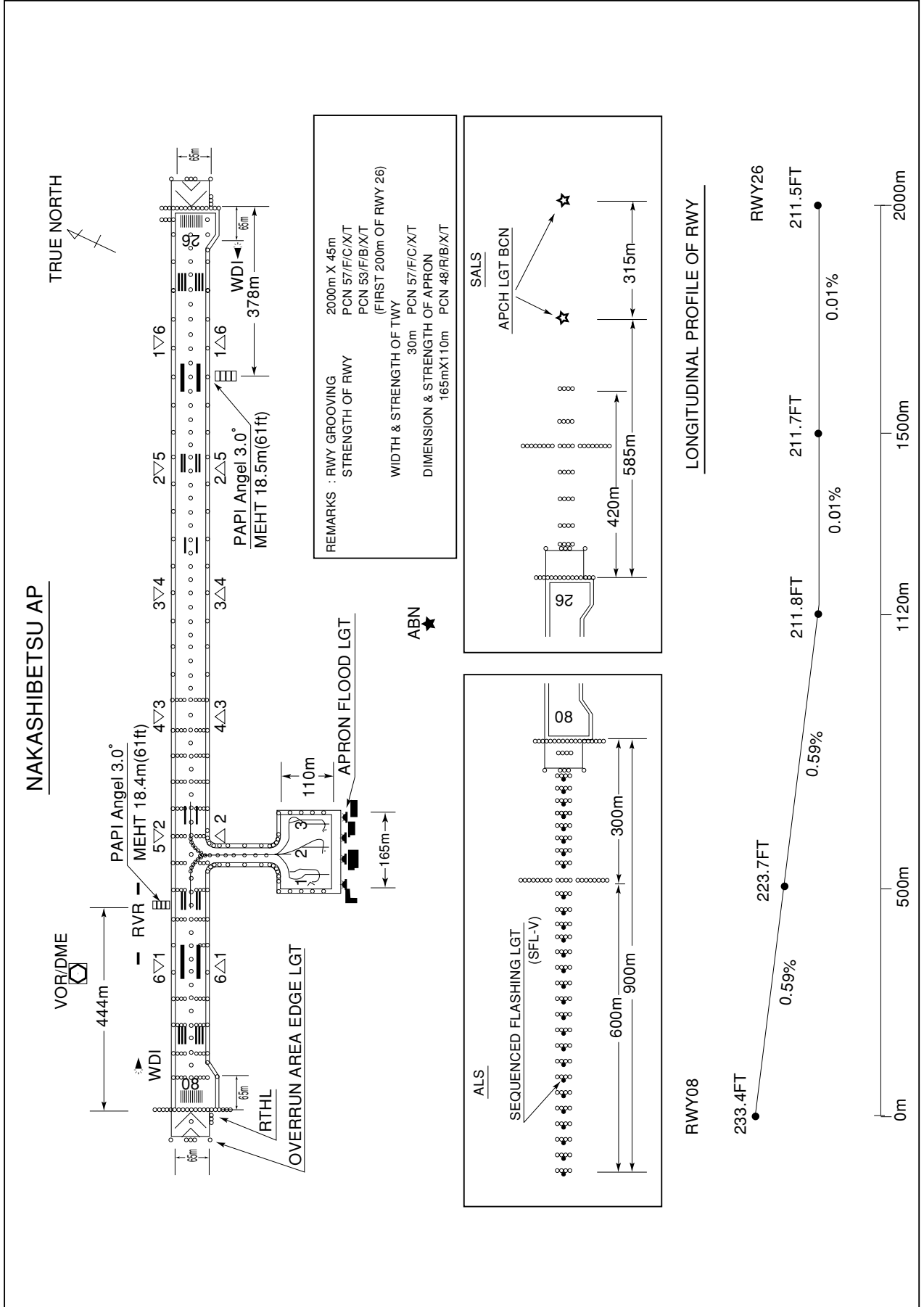


RJCN / NAKASHIBETSU

AD CHART



STANDARD DEPARTURE CHART-INSTRUMENT

RJCN / NAKASHIBETSU

SID

MASHU FIVE DEPARTURE

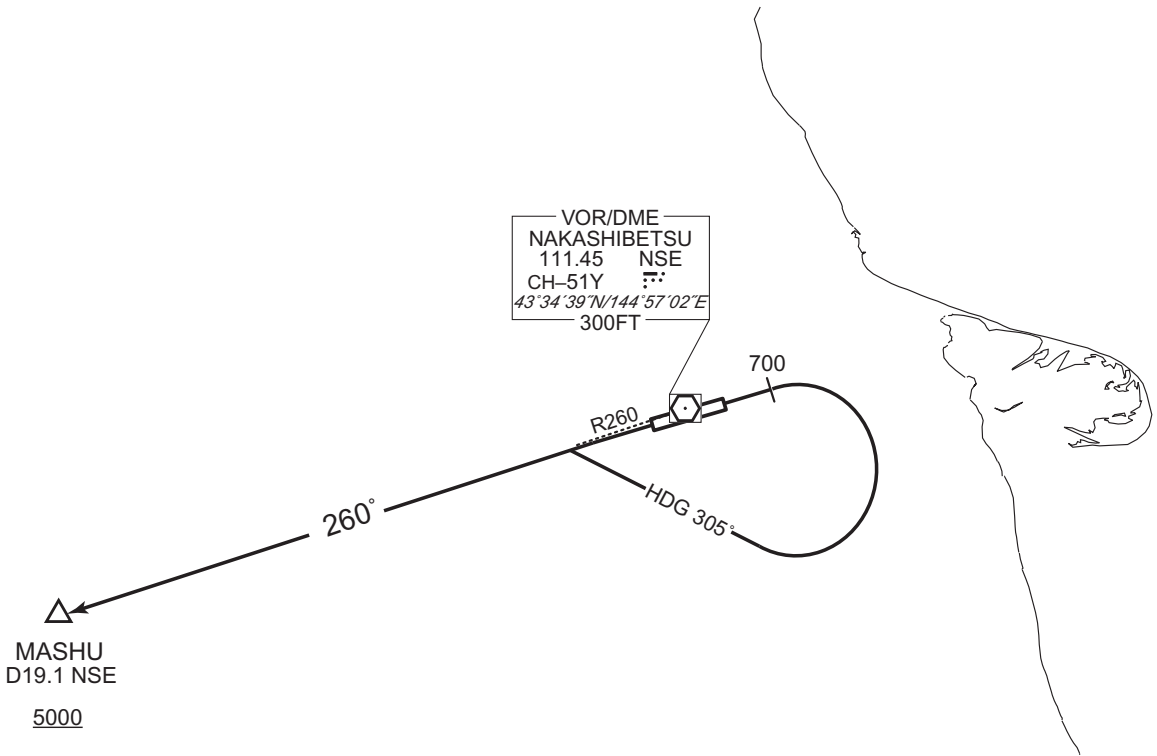
RWY08: Climb RWY HDG to 700FT, turn right HDG305° to intercept and proceed...

RWY26: Climb...

... via NSE R260 to MASHU.

Cross MASHU at or above 5000FT.

CHANGE : Description of PROC name.



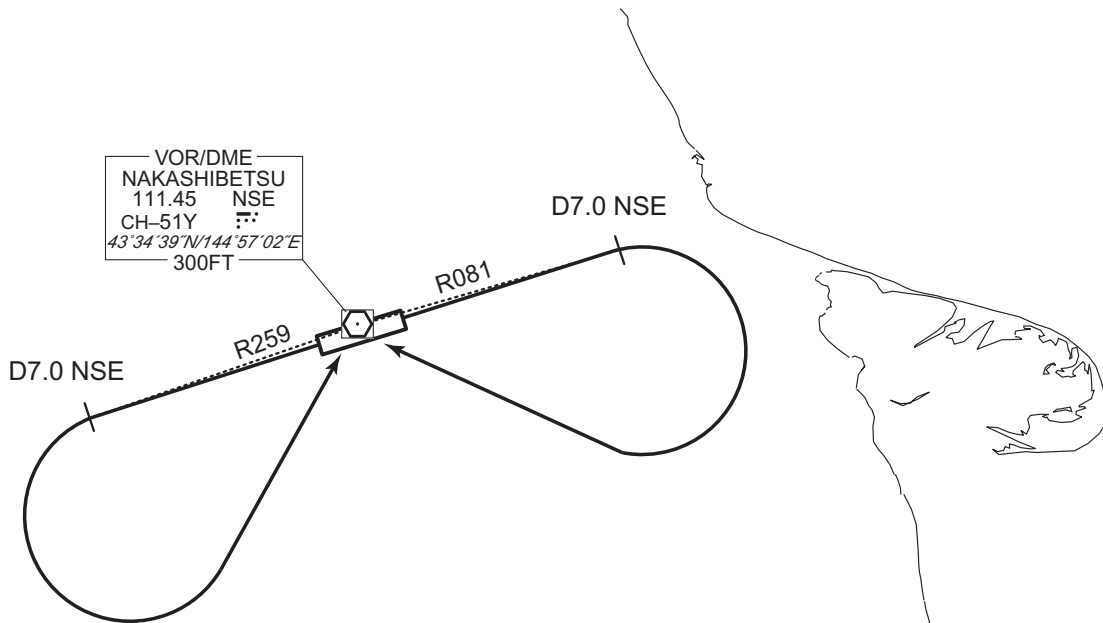
STANDARD DEPARTURE CHART-INSTRUMENT

RJCN / NAKASHIBETSU

SID

NAKASHIBETSU REVERSAL FOUR DEPARTURE

RWY08: Climb via NSE R081 to NSE 7.0DME, turn right,...
RWY26: Climb via NSE R259 to NSE 7.0DME, turn left,...
... direct to NSE VOR/DME.

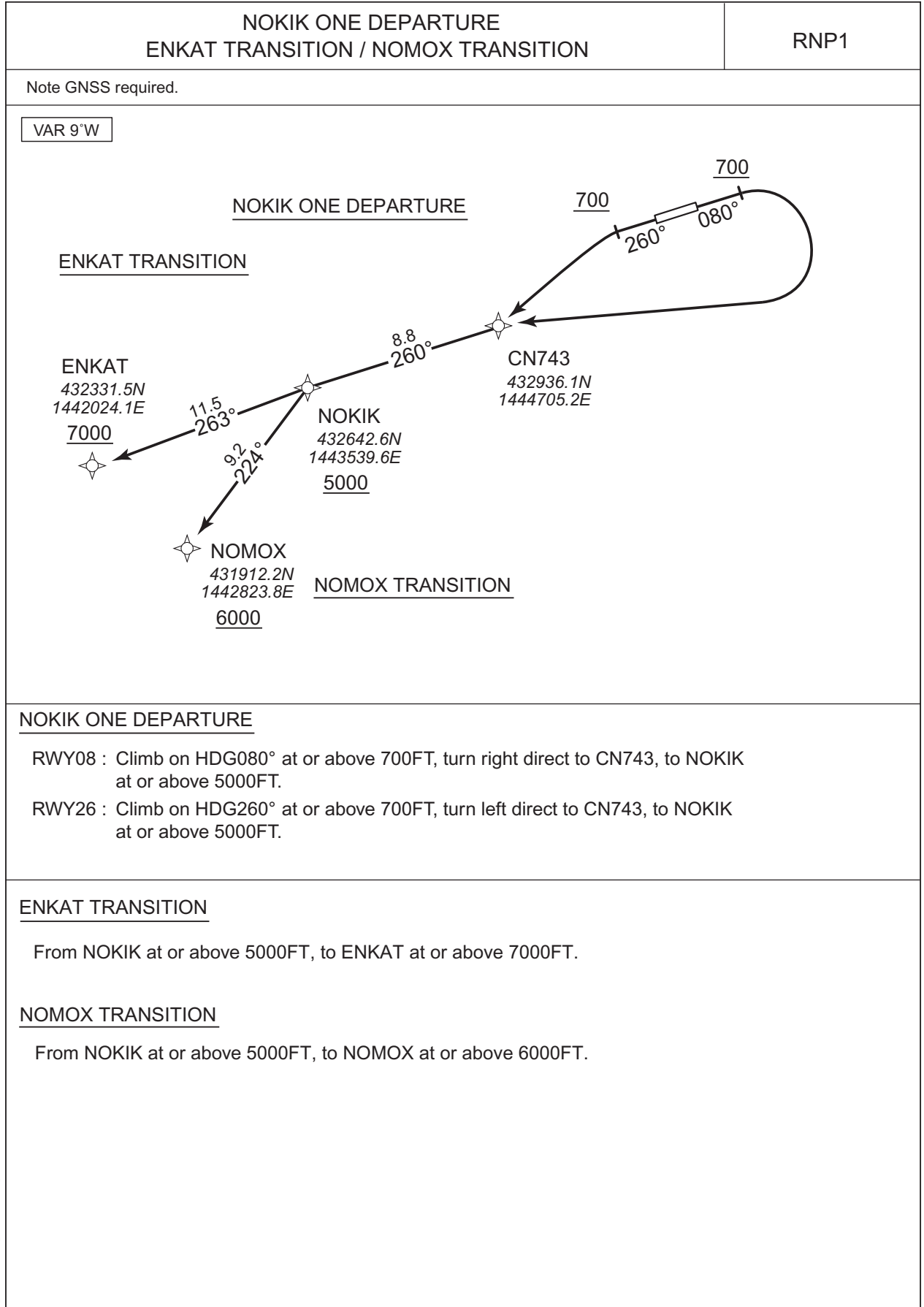


CHANGE : Description of PROC name.

STANDARD DEPARTURE CHART-INSTRUMENT

RJCN / NAKASHIBETSU

RNAV SID and TRANSITION



CHANGE : New PROC.

STANDARD DEPARTURE CHART-INSTRUMENT

RJCN / NAKASHIBETSU

RNAV SID and TRANSITION

NOKIK ONE DEPARTURE

RWY08

Serial Number	Path Descriptor	Waypoint Identifier	Fly Over	Course °M(°T)	Magnetic Variation	Distance (NM)	Turn Direction	Altitude (FT)	Speed (KIAS)	Vertical Angle	Navigation Specification
001	VA	-	-	080 (071.0)	-9.3	-	-	+700	-	-	RNP1
002	DF	CN743	-	-	-9.3	-	R	-	-	-	RNP1
003	TF	NOKIK	-	260 (250.8)	-9.3	8.8	-	+5000	-	-	RNP1

RWY26

Serial Number	Path Descriptor	Waypoint Identifier	Fly Over	Course °M(°T)	Magnetic Variation	Distance (NM)	Turn Direction	Altitude (FT)	Speed (KIAS)	Vertical Angle	Navigation Specification
001	VA	-	-	260 (251.0)	-9.3	-	-	+700	-	-	RNP1
002	DF	CN743	-	-	-9.3	-	L	-	-	-	RNP1
003	TF	NOKIK	-	260 (250.8)	-9.3	8.8	-	+5000	-	-	RNP1

ENKAT TRANSITION

Serial Number	Path Descriptor	Waypoint Identifier	Fly Over	Course °M(°T)	Magnetic Variation	Distance (NM)	Turn Direction	Altitude (FT)	Speed (KIAS)	Vertical Angle	Navigation Specification
001	IF	NOKIK	-	-	-9.3	-	-	+5000	-	-	RNP1
002	TF	ENKAT	-	263 (254.1)	-9.3	11.5	-	+7000	-	-	RNP1

NOMOX TRANSITION

Serial Number	Path Descriptor	Waypoint Identifier	Fly Over	Course °M(°T)	Magnetic Variation	Distance (NM)	Turn Direction	Altitude (FT)	Speed (KIAS)	Vertical Angle	Navigation Specification
001	IF	NOKIK	-	-	-9.3	-	-	+5000	-	-	RNP1
002	TF	NOMOX	-	224 (215.2)	-9.3	9.2	-	+6000	-	-	RNP1

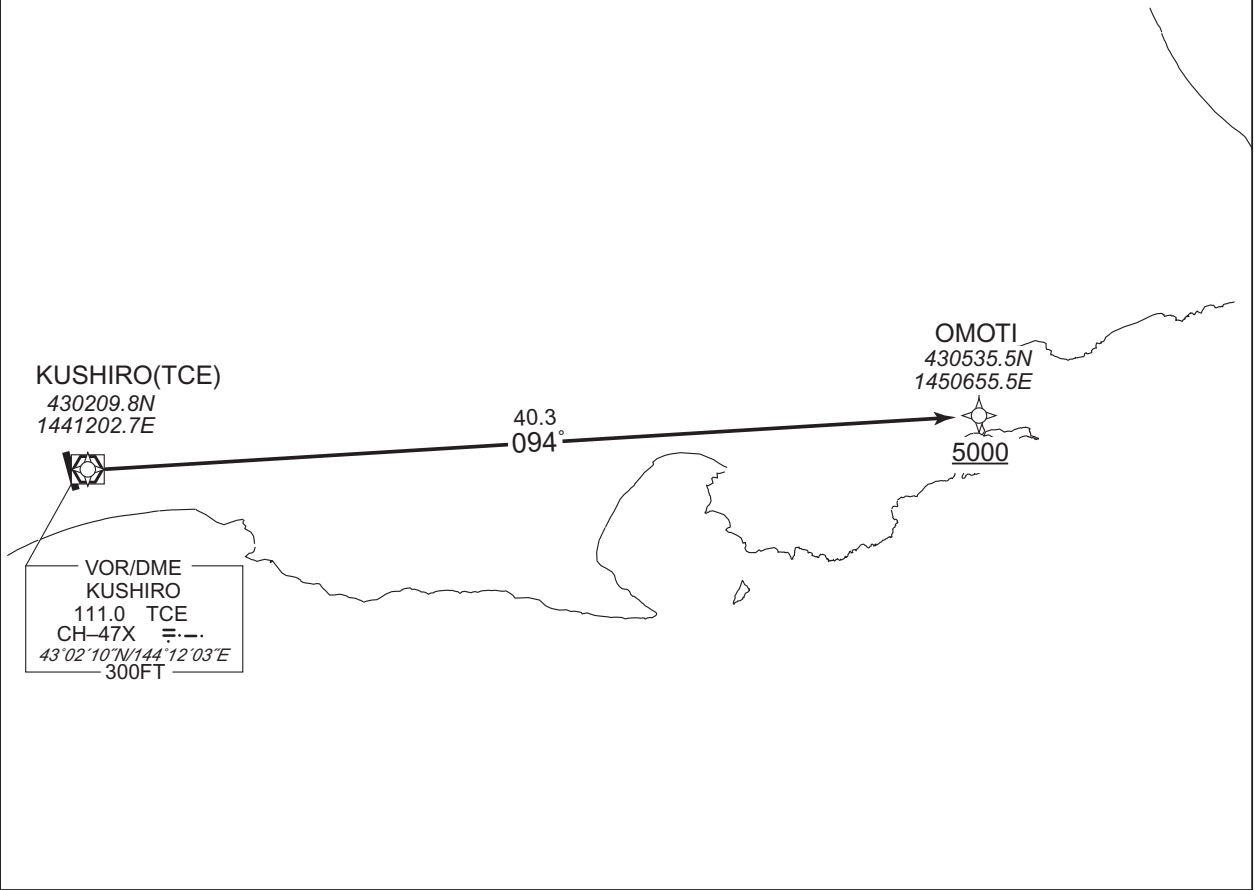
CHANGE : New PROC.

STANDARD ARRIVAL CHART - INSTRUMENT

RJCN / NAKASHIBETSU KUSHIRO ARRIVAL	RNAV STAR RNP1
---	--------------------------

Note GNSS required.

VAR 9°W



From TCE, to OMOTI at or above 5000FT.

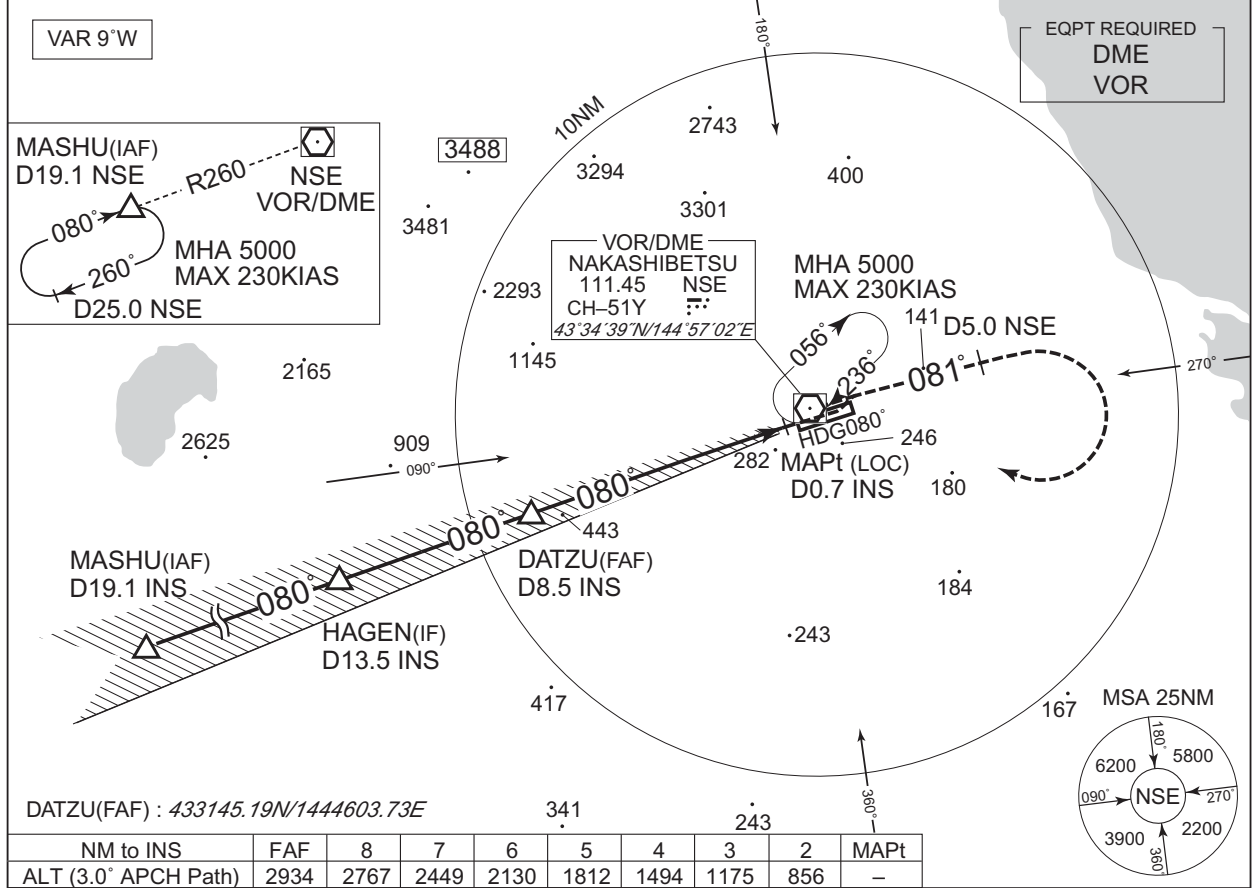
CHANGE : Navigation Specification(Basic RNP1 → RNP1).

Serial Number	Path Descriptor	Waypoint Identifier	Fly Over	Course °M(°T)	Magnetic Variation	Distance (NM)	Turn Direction	Altitude (FT)	Speed (KIAS)	Vertical Angle	Navigation Specification
001	IF	TCE	—	—	-9.2	—	—	—	—	—	RNP1
002	TF	OMOTI	—	094 (084.8)	-9.2	40.3	—	+5000	—	—	RNP1

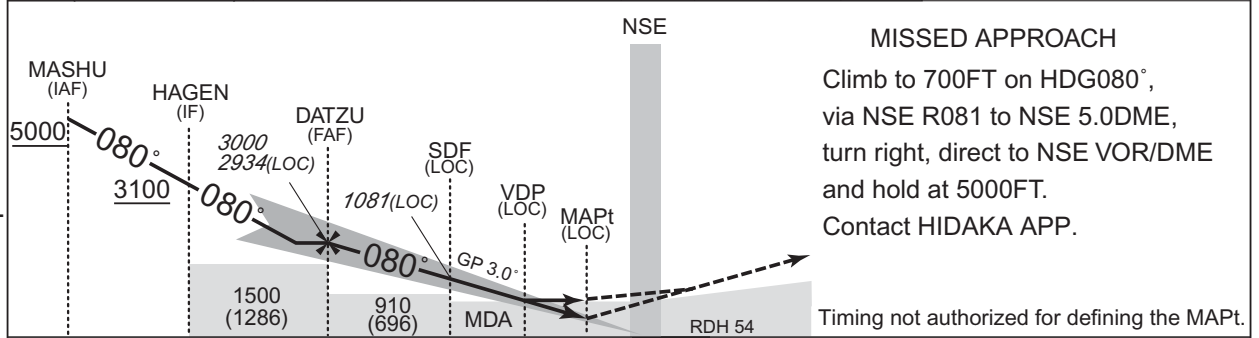
INSTRUMENT APPROACH CHART

RJCN / NAKASHIBETSU ILS Z or LOC Z RWY08

HIDAKA APP 128.325 - 246.1 - 134.55	ILS / LOC 109.35 INS :: ILS - GP 331.85 ILS-DME CH-30Y	NAKASHIBETSU RADIO 122.7 AFIS provided by New Chitose Airport Office	RADAR AVBL
--	---	---	------------



CHANGE : ATC call sign and FREQ. Description of RADAR Service. Missed APCH PROC.



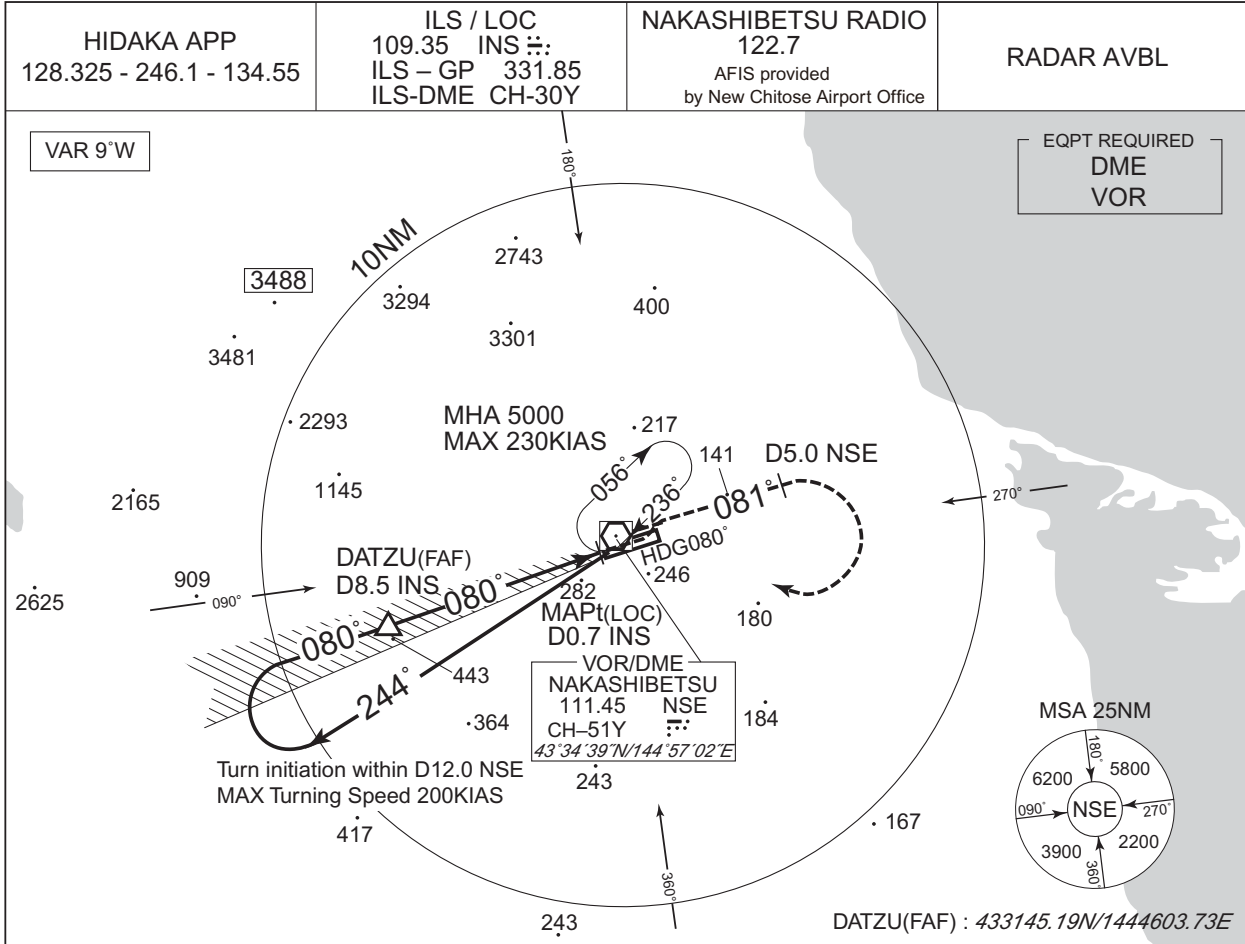
19.1	13.5	8.5	2.6	1.4	0.7	0.2	DME to INS
18.9	13.3	8.3	2.5	1.2	0.5	0	NM to THR

MINIMA		THR elev. 233		AD elev. 214				
CAT	CAT I		LOC		CIRCLING			
	DA(H)	RVR/CMV	MDA(H)	RVR/CMV	MDA(H)	VIS		
A	433 (200)	550	640 (426)	900	690 (476)	1600		
B				1000				
C				1400			770 (556)	2400
D				1400			770 (556)	3200

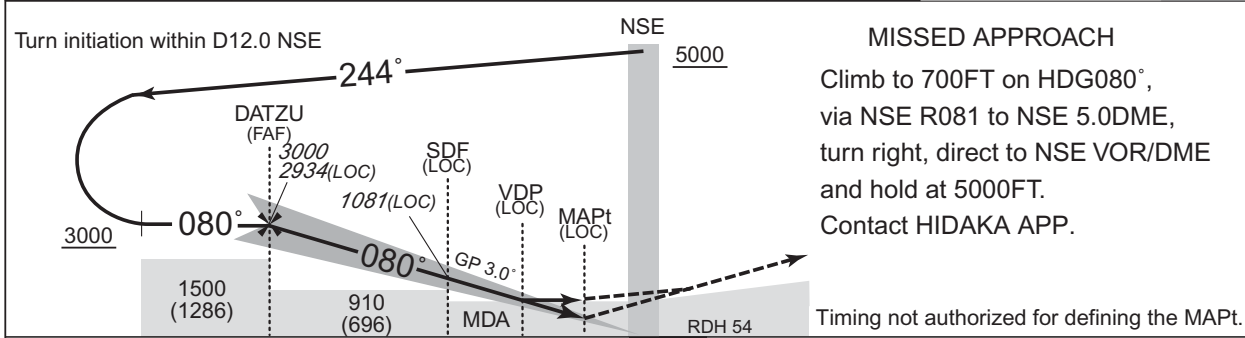
INSTRUMENT APPROACH CHART

RJCN / NAKASHIBETSU

ILS Y or LOC Y RWY08



NM to INS	FAF	8	7	6	5	4	3	2	MAPt
ALT (3.0° APCH Path)	2934	2767	2449	2130	1812	1494	1175	856	-



8.5	2.6	1.4	0.7	0.2	DME to INS
8.3	2.5	1.2	0.5	0	NM to THR

MINIMA		THR elev. 233		AD elev. 214		
CAT	CAT I		LOC		CIRCLING	
	DA(H)	RVR/CMV	MDA(H)	RVR/CMV	MDA(H) VIS	
A	433 (200)	550	640 (426)	900	1600	
B				1000		690 (476)
C				1400	770 (556)	
D						

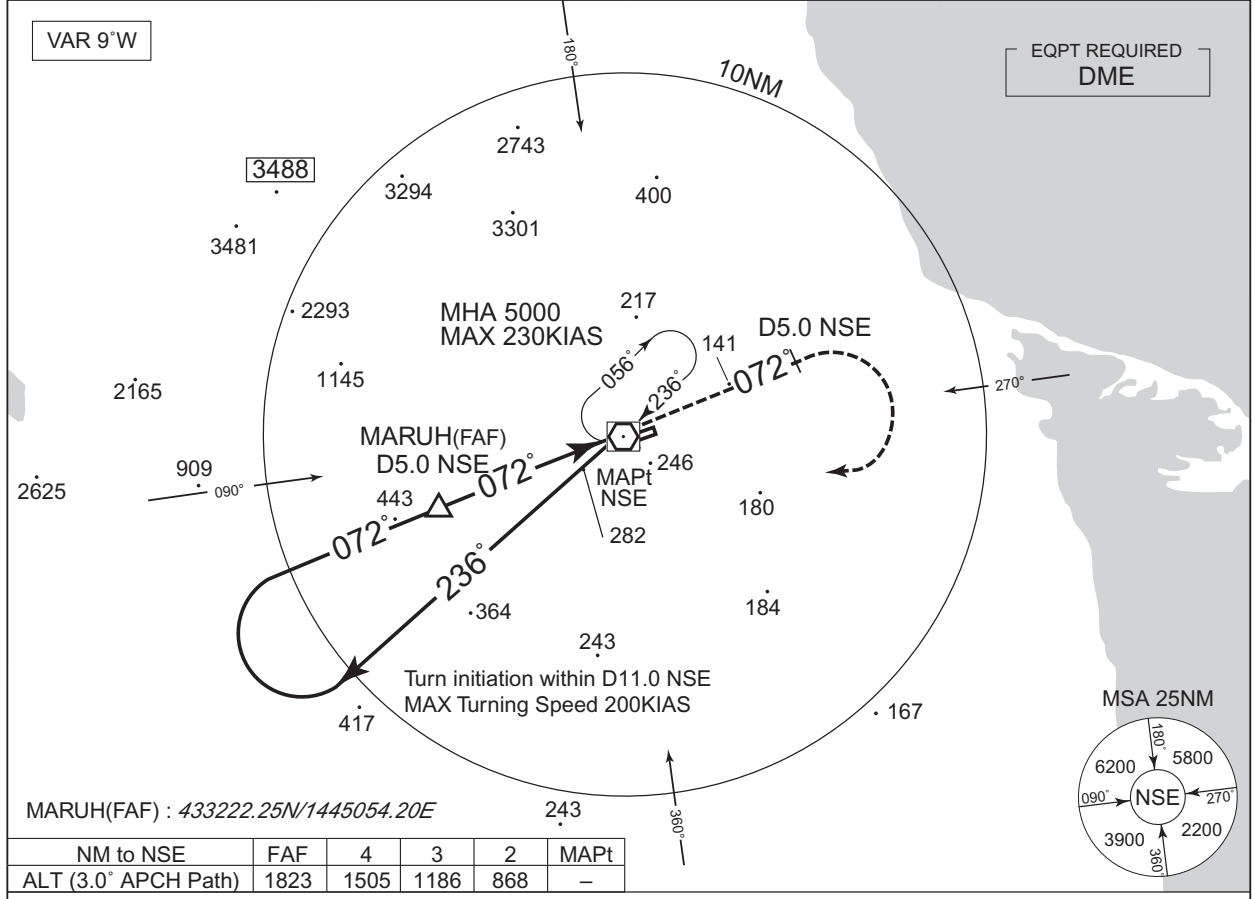
CHANGE : ATC call sign and FREQ. Description of RADAR Service. Missed APCH PROC.

INSTRUMENT APPROACH CHART

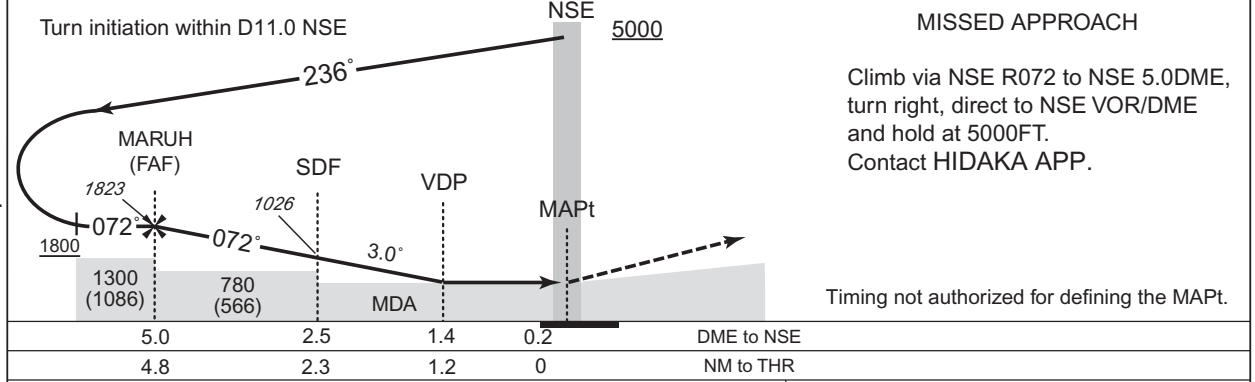
RJCN / NAKASHIBETSU

VOR RWY08

HIDAKA APP 128.325 - 246.1 - 134.55	NAKASHIBETSU VOR/DME 111.45 NSE CH-51Y 43°34'39"N/144°57'02"E	NAKASHIBETSU RADIO 122.7 AFIS provided by New Chitose Airport Office	RADAR AVBL
--	--	---	------------



CHANGE : ATC call sign and FREQ. Description of RADAR Service. Missed APCH PROC.

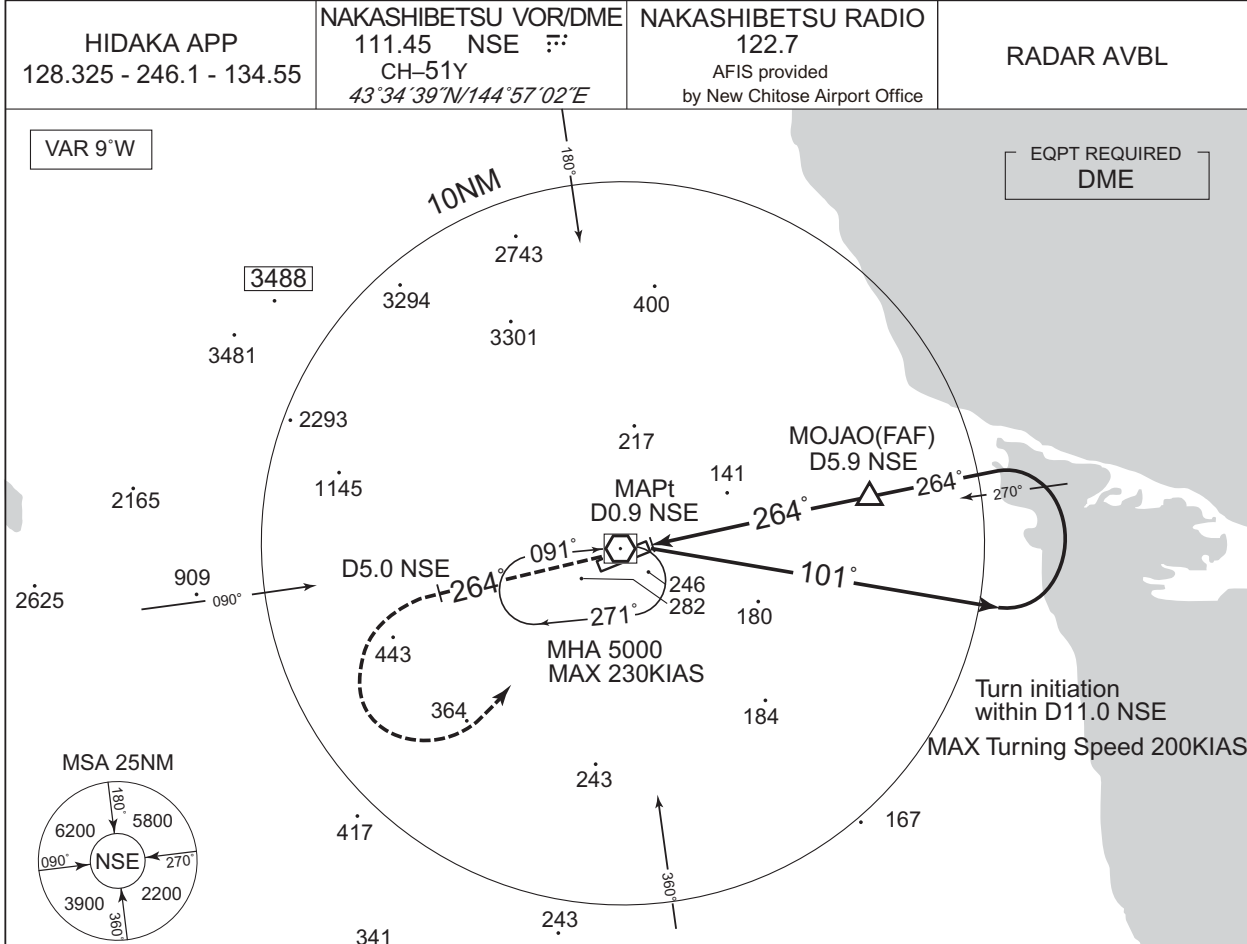


MINIMA		THR elev. 233		AD elev. 214	
CAT			CIRCLING		
	MDA(H)	RVR/CMV	MDA(H)	VIS	
A	640 (426)	900	690 (476)	1600	
B		1000		2400	
C	650 (436)		1400	770 (556)	3200
D					

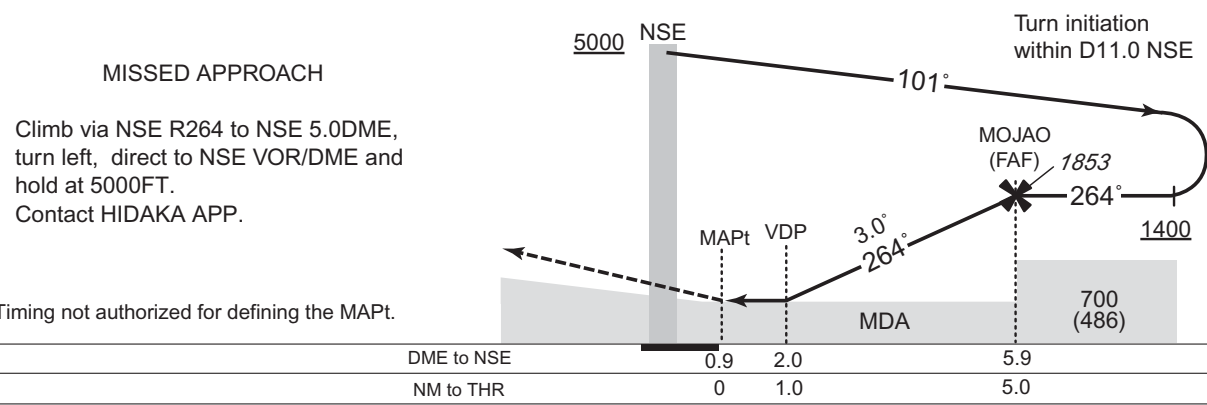
INSTRUMENT APPROACH CHART

RJCN / NAKASHIBETSU

VOR RWY26



MOJAO(FAF) : 433608.06N/1450455.60E	NM to NSE	MAPt	2	3	4	5	FAF
	ALT (3.0° APCH Path)	-	602	920	1239	1557	1853



MINIMA		THR elev. 212	AD elev. 214
CAT	MDA(H)		CIRCLING
	MDA(H)	CMV	MDA(H) VIS
A	580 (366)	1200	690 (476) 1600
B		1300	
C		1400	2400
D		1600	770 (556) 3200

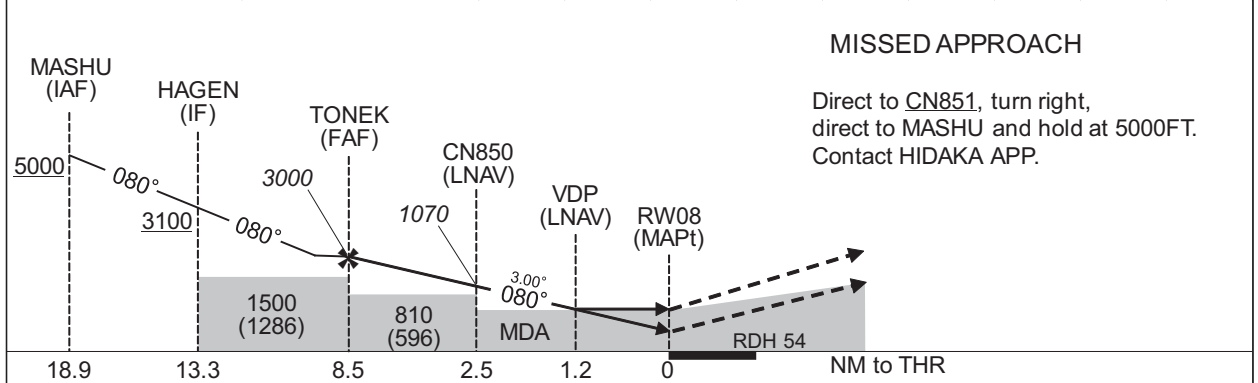
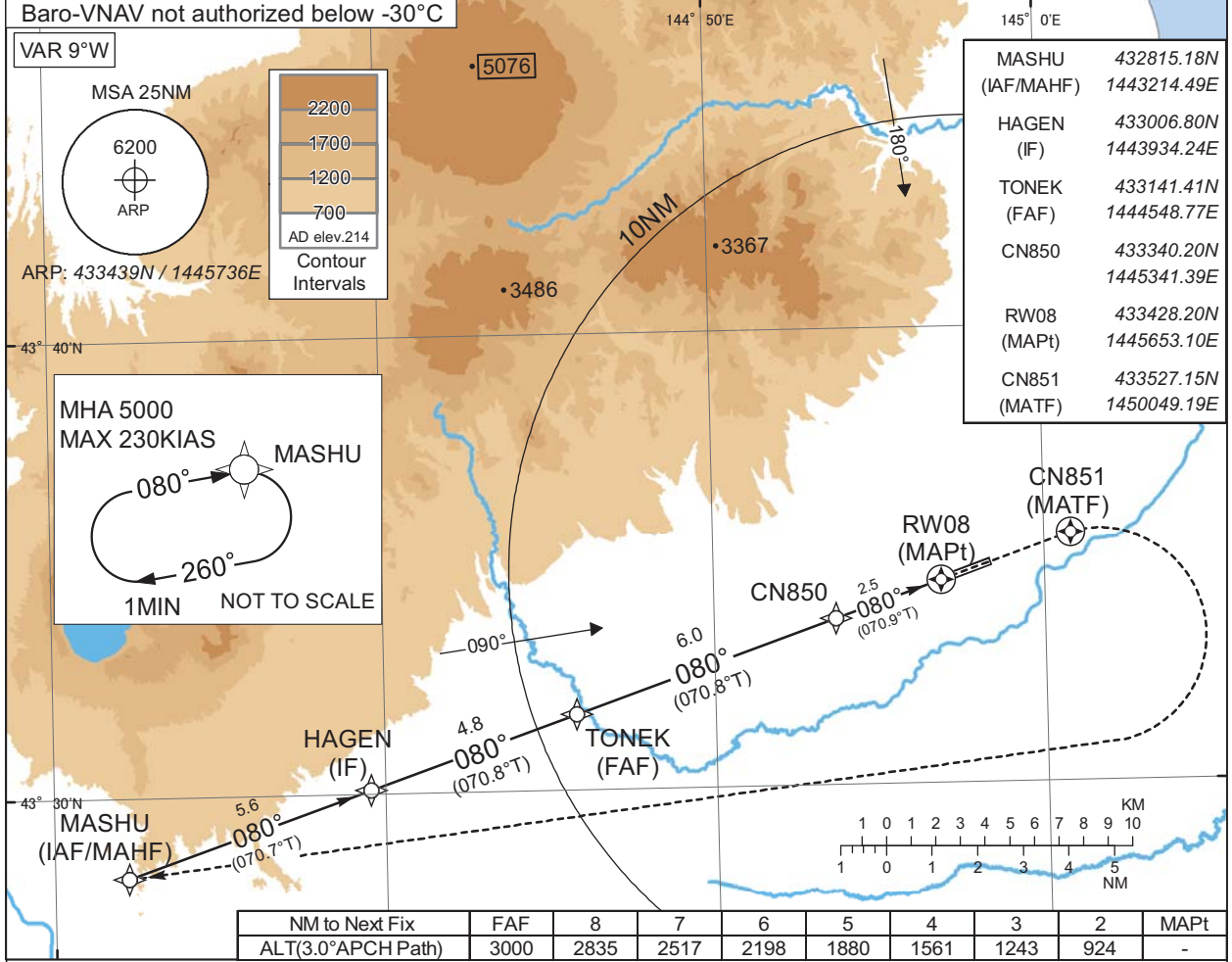
CHANGE : ATC call sign and FREQ. Description of RADAR Service. Missed APCH PROC.

INSTRUMENT APPROACH CHART

RJCN / NAKASHIBETSU

RNP RWY08

HIDAKA APP 128.325 - 246.1 - 134.55	RNP APCH MSAS CH59564 M08A	NAKASHIBETSU RADIO 122.7 AFIS provided by New Chitose Airport Office	RADAR AVBL
--	----------------------------------	---	------------



CHANGE : New PROC.

MINIMA	THR elev. 233	AD elev. 214						
CAT	LPV		LNAV/VNAV		LNAV		CIRCLING	
	DA(H)	RVR/CMV	DA(H)	RVR/CMV	MDA(H)	RVR/CMV	MDA(H)	VIS
A	483(250)	800	640(407)	900	640(426)	900	690(476)	1600
B	493(260)			1000		1000		
C	503(270)			1400		1400		
D	513(280)	1200				770(556)	3200	

INSTRUMENT APPROACH CHART

RJCN / NAKASHIBETSU

RNP RWY08

FAS DATA BLOCK

Operation type	0	LTP/FTP ellipsoidal height	+01021
SBAS service provider identifier	2	FPAP latitude	433449.2600N
Airport identifier	RJCN	FPAP longitude	1445817.3505E
Runway	08	Threshold crossing height	00016.5
Approach performance designator	0	TCH units selector	1
Route indicator		Glide path angle	03.00
Reference path data selector	0	Course width at threshold	105.00
Reference path ID	M08A	∠ length offset	0000
LTP/FTP latitude	433428.1900N	HAL	40.0
LTP/FTP longitude	1445653.0495E	VAL	50.0
CRC remainder	71C61926		

Required additional data

LTP/FTP orthometric height	70.6
----------------------------	------

CHANGE : New PROC.

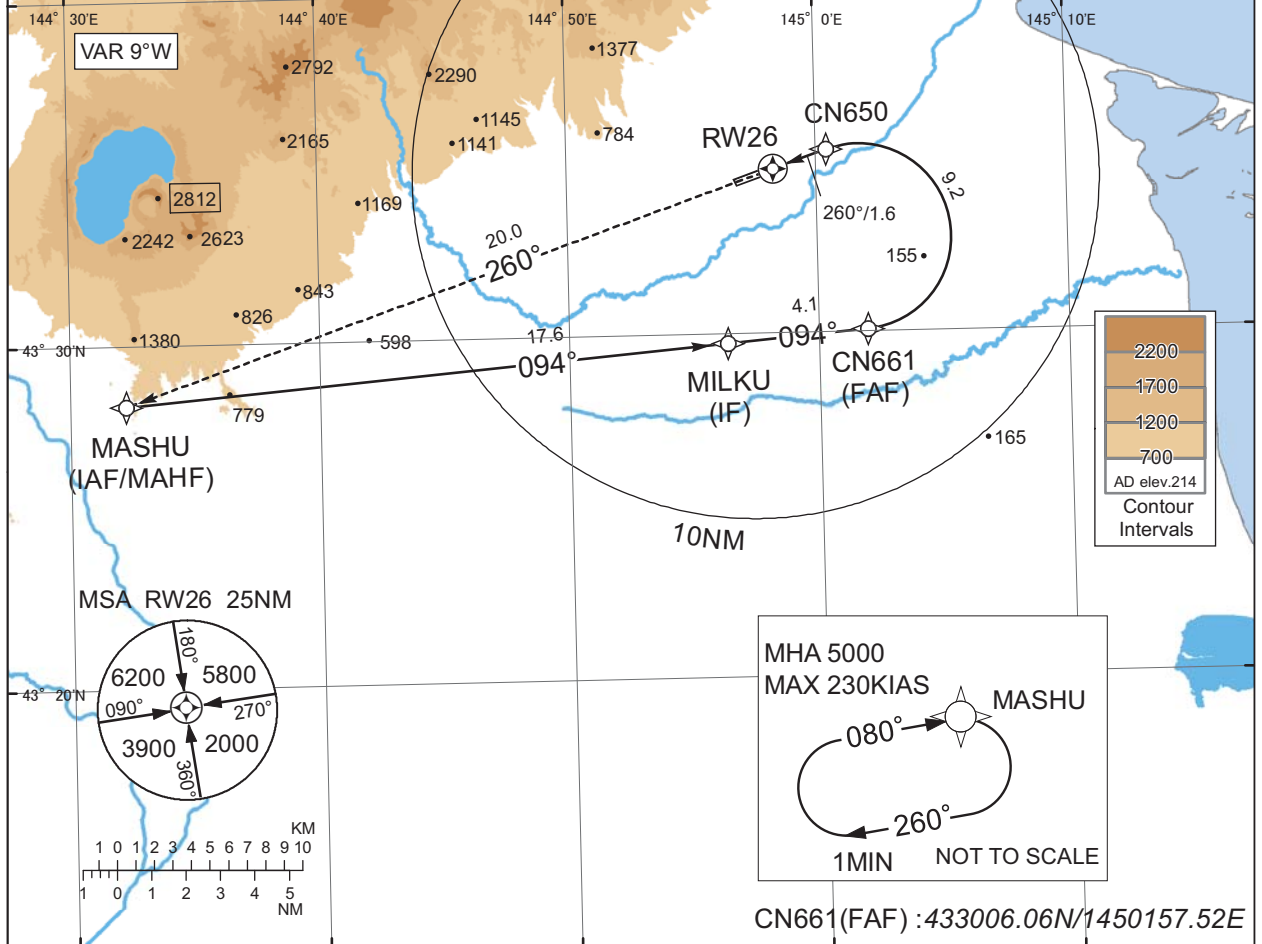
INSTRUMENT APPROACH CHART

RJCN / NAKASHIBETSU

RNP Z RWY26(AR)

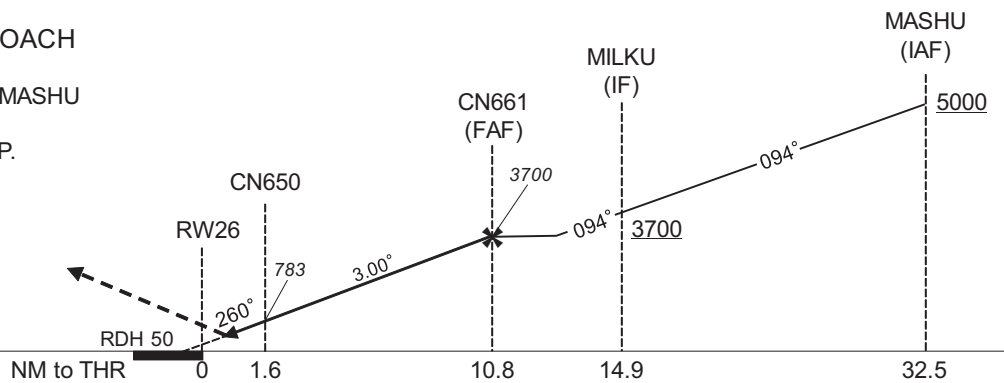
HIDAKA APP 128.325 - 246.1 - 134.55	RNP AR RF required	NAKASHIBETSU RADIO 122.7 AFIS provided by New Chitose Airport Office	RADAR AVBL
--	-----------------------	---	------------

For uncompensated Baro-VNAV systems, procedure not authorized below -30°C / above 45°C



MISSED APPROACH

Climb to 5000FT, to MASHU and hold.
Contact HIDAKA APP.



CHANGE : HLDG pattern for using NAVDID abolished.

MINIMA	THR elev. 212	AD elev. 214
CAT	RNP 0.30	
	DA(H)	CMV
A	-	-
B	-	-
C	512(300)	1400
D	512(300)	1600

Authorization Required



INSTRUMENT APPROACH CHART

RJCN / NAKASHIBETSU

RNP Z RWY26(AR)

Coding Table

Serial Number	Path Descriptor	Waypoint Identifier	Fly Over	Course °M(°T)	Magnetic Variation	Distance (NM)	Turn Direction	Altitude (FT)	Speed (KIAS)	VPA/RDH (°/FT)	RNP Value
001	IF	MASHU	-	-	-9.2	-	-	+5000	-	-	-
002	TF	MILKU	-	094 (084.9)	-9.2	17.6	-	+3700	-	-	1.0
003	TF	CN661	-	094 (085.2)	-9.2	4.1	-	3700	-	-	1.0
004	RF Center: CNRF2 r=2.70NM	CN650	-	-	-9.2	9.2	L	783	-	-3.00	0.3
005	TF	RW26	Y	260 (251.0)	-9.2	1.6	-	262	-	-3.00/50	0.3
006	TF	MASHU	-	260 (251.0)	-9.2	20.0	-	5000	-	-	1.0

Path	Waypoint Identifier	Inbound Course °M(°T)	Magnetic Variation	Outbound Time (MIN)	Turn Direction	Minimum Altitude (FT)	Maximum Altitude (FT)	Speed (KIAS)	RNP Value
Hold	MASHU	080 (070.4)	-9.2	1.0 (-14000)	R	5000	FL140	-230 (-14000)	1.0

Waypoint Coordinates

Waypoint Identifier	Coordinates	RF Arc Center Identifier	Coordinates
MASHU	432815.18N / 1443214.49E	CNRF2	433247.93N / 1450139.17E
MILKU	432945.72N / 1445620.67E		
CN661	433006.06N / 1450157.52E		
CN650	433521.30N / 1450025.71E		
RW26	433449.27N / 1445817.40E		

INSTRUMENT APPROACH CHART

RJCN / NAKASHIBETSU

RNP Y RWY26

FAS DATA BLOCK

Operation type	0	LTP/FTP ellipsoidal height	+00954
SBAS service provider identifier	2	FPAP latitude	433428.1900N
Airport identifier	RJCN	FPAP longitude	1445653.0495E
Runway	26	Threshold crossing height	00015.0
Approach performance designator	0	TCH units selector	1
Route indicator	Y	Glide path angle	03.00
Reference path data selector	0	Course width at threshold	105.00
Reference path ID	M26A	∠ length offset	0000
LTP/FTP latitude	433449.2600N	HAL	40.0
LTP/FTP longitude	1445817.3505E	VAL	50.0
CRC remainder	12630585		

Required additional data

LTP/FTP orthometric height	63.9
----------------------------	------

CHANGE : New PROC.

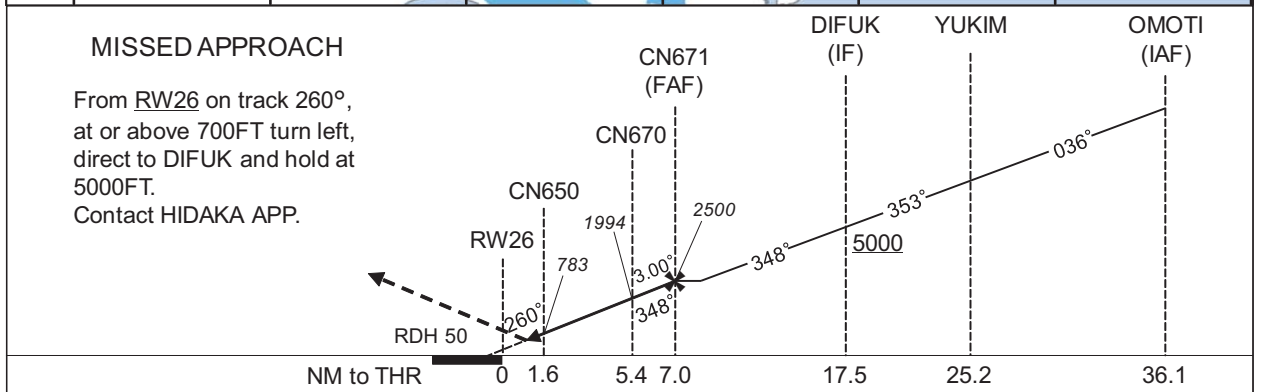
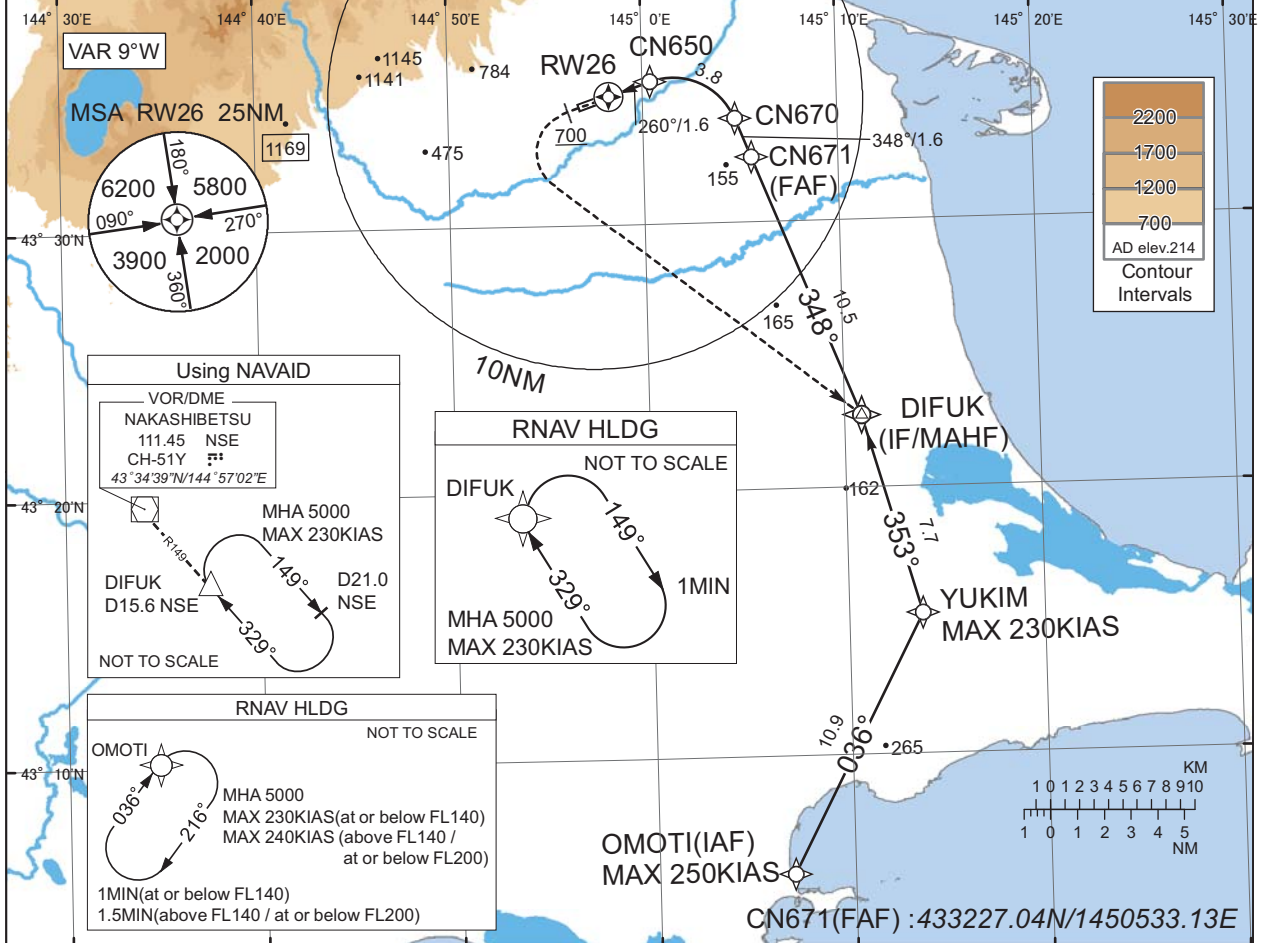
INSTRUMENT APPROACH CHART

RJCN / NAKASHIBETSU

RNP X RWY26(AR)

HIDAKA APP 128.325 - 246.1 - 134.55	RNP AR RF required	NAKASHIBETSU RADIO 122.7 AFIS provided by New Chitose Airport Office	RADAR AVBL
--	-----------------------	---	------------

For uncompensated Baro-VNAV systems, procedure not authorized below -30°C / above 45°C



Missed APCH climb gradient MNM 5.0%

MINIMA	THR elev. 212	AD elev. 214
CAT	RNP 0.30	
	DA(H)	CMV
A	-	-
B	-	-
C	512(300)	1400
D	-	1600

Authorization Required

MINIMA with Missed APCH climb gradient of 2.5% are not established.

CHANGE : PROC renamed.

INSTRUMENT APPROACH CHART

RJCN / NAKASHIBETSU

RNP X RWY26(AR)

Coding Table

Serial Number	Path Descriptor	Waypoint Identifier	Fly Over	Course °M(°T)	Magnetic Variation	Distance (NM)	Turn Direction	Altitude (FT)	Speed (KIAS)	VPA/RDH (°/FT)	RNP Value
001	IF	OMOTI	-	-	-9.2	-	-	+5000	-250	-	-
002	TF	YUKIM	-	036 (027.2)	-9.2	10.9	-	+5000	-230	-	1.0
003	TF	DIFUK	-	353 (344.3)	-9.2	7.7	-	+5000	-	-	1.0
004	TF	CN671	-	348 (338.4)	-9.2	10.5	-	2500	-	-	1.0
005	TF	CN670	-	348 (338.3)	-9.2	1.6	-	1994	-	-3.00	0.3
006	RF Center: CNRF1 r=2.50NM	CN650	-	-	-9.2	3.8	L	783	-	-3.00	0.3
007	TF	RW26	Y	260 (251.0)	-9.2	1.6	-	262	-	-3.00/50	0.3
008	FA	-	-	260 (251.0)	-9.2	-	-	+700	-	-	1.0
009	DF	DIFUK	-	-	-9.2	-	L	5000	-	-	1.0

Path	Waypoint Identifier	Inbound Course °M(°T)	Magnetic Variation	Outbound Time (MIN)	Turn Direction	Minimum Altitude (FT)	Maximum Altitude (FT)	Speed (KIAS)	RNP Value
Hold	DIFUK	329 (320.0)	-9.2	1.0 (-14000)	R	5000	FL140	-230(-14000)	1.0
Hold	OMOTI	036 (027.1)	-9.2	1.0 (-14000) 1.5 (-20000)	R	5000	FL200	-230(-14000) -240(-20000)	1.0

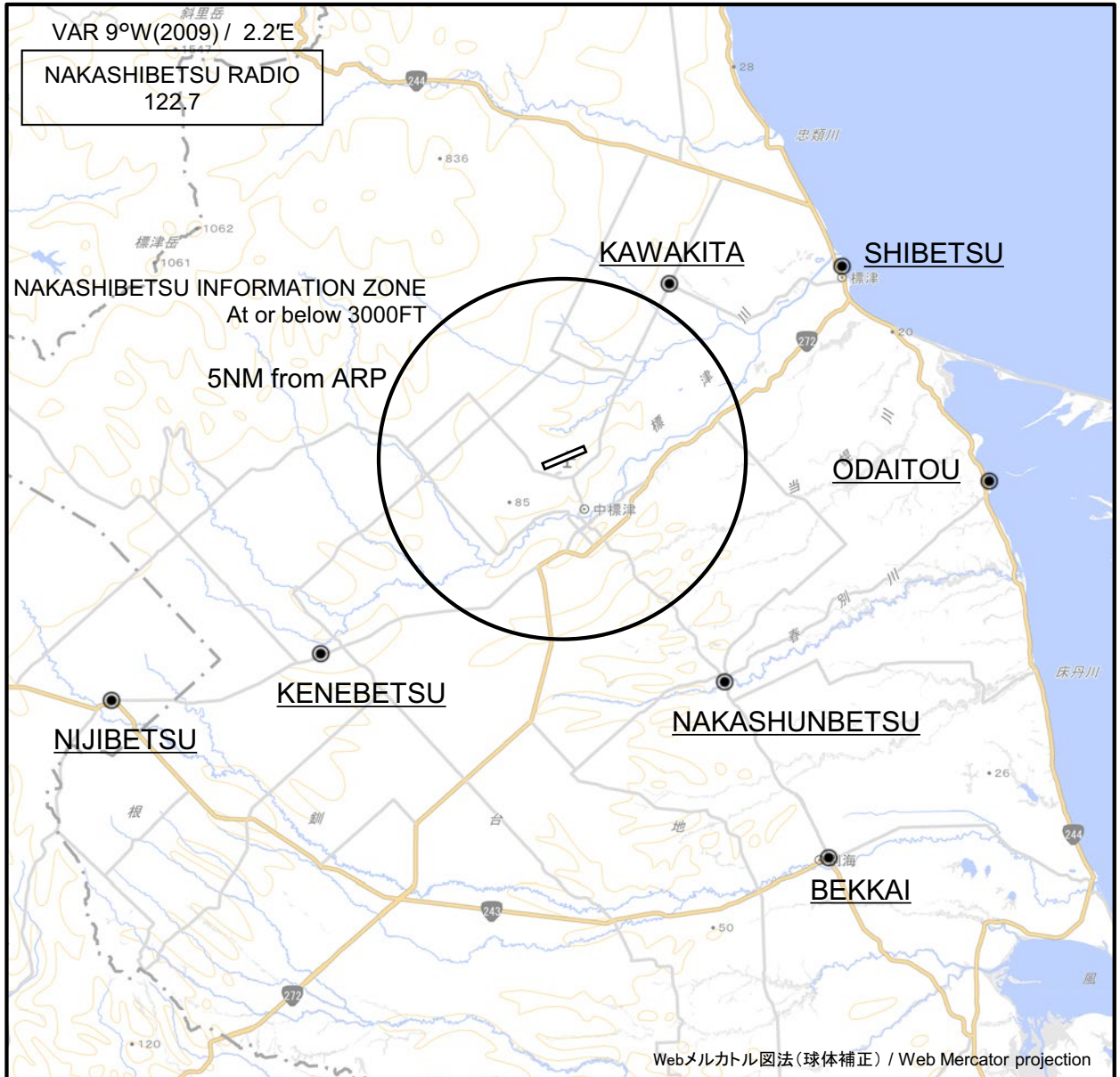
Waypoint Coordinates

Waypoint Identifier	Coordinates	RF Arc Center Identifier	Coordinates
OMOTI	430535.54N / 1450655.47E	CNRF1	433259.00N / 1450132.84E
YUKIM	431516.17N / 1451345.84E		
DIFUK	432242.79N / 1451052.79E		
CN671	433227.04N / 1450533.13E		
CN670	433354.84N / 1450444.93E		
CN650	433521.30N / 1450025.71E		
RW26	433449.27N / 1445817.40E		

CHANGE : PROC renamed.

RJCN / NAKASHIBETSU

Visual REP



※図中に標高を示す数字がある場合、単位はメートル(m)である。The unit of measurement used to express elevation is meter(m).

CHANGE : Call sign(REMOTE→RADIO).

Call sign	BRG / DIST from ARP	Remarks
標津 Shibetsu	055°T / 9.1NM	標津港 Harbor
川北 Kawakita	030°T / 5.6NM	市街地 Town
尾岱沼 Odaitou	093°T / 11.5NM	尾岱沼港 Harbor
計根別 Kenebetsu	231°T / 8.5NM	市街地 Town
中春別 Nakashunbetsu	145°T / 7.5NM	市街地 Town
虹別 Nijibetsu	242°T / 13.9NM	市街地 Town
別海 Bekkai	147°T / 13.1NM	市街地 Town

