

AD 2 AERODROMES

RJCN AD 2.1 AERODROME LOCATION INDICATOR AND NAME

RJCN - NAKASHIBETSU

RJCN AD 2.2 AERODROME GEOGRAPHICAL AND ADMINISTRATIVE DATA

1	ARP coordinates and site at AD	433439N/1445736E 071°/1km from RWY 08 THR
2	Direction and distance from (city)	2nm N NAKASHIBETSU
3	Elevation/ Reference temperature	214ft / 24°C(2004-2008)
4	Geoid undulation at AD ELEV PSN	100ft
5	MAG VAR/ Annual change	9° W(2009) / 2.2'E
6	AD Administration, address, telephone, telefax, telex, AFS, e-mail and/or Web-site addresses	HOKKAIDO. Public AP. Nakashibetsu Airport Administration Office 16-9, Kitanaka, Nakashibetsu-cho, Shibetsu-gun, Hokkaido TEL: 0153-72-2043 FAX: 0153-72-0096 E-mail: kushirodoboku.nakaku1@pref.hokkaido.lg.jp
7	Types of traffic permitted (IFR/VFR)	IFR/VFR
8	Remarks	Nil

RJCN AD 2.3 OPERATIONAL HOURS

1	AD Administration	2330 - 0930
2	Customs and immigration	On request Customs: 0153-25-8257 Immigration: 0154-22-2430
3	Health and sanitation	Quarantine(human): On request(0154-23-3340) Quarantine(animal, plant): Nil
4	AIS Briefing Office	Nil
5	ATS Reporting Office(ARO)	Nil
6	MET Briefing Office	H24 (NEW CHITOSE)
7	ATS	2330 - 0930 Remarks : AFIS provided by New Chitose Airport Office.
8	Fuelling	2330 - 0930
9	Handling	2330 - 0930
10	Security	2330 - 0930
11	De-icing	Nil
12	Remarks	Nil

**RJCN AD 2.4 HANDLING SERVICES AND FACILITIES**

1	Cargo-handling facilities	All the modern institutions that deal with the weight thing to a Boeing B767 type freighter
2	Fuel/ oil types	Fuel Grades : JET A-1
3	Fuelling facilities/ capacity	Fuel truck refueling, 19L/sec
4	De-icing facilities	Nil
5	Hangar space for visiting aircraft	Nil
6	Repair facilities for visiting aircraft	Nil
7	Remarks	Nil

**RJCN AD 2.5 PASSENGER FACILITIES**

1	Hotels	Nil
2	Restaurants	At airport
3	Transportation	Busses and Taxis
4	Medical facilities	Hospital in Nakashibetsu-town, 6km from AP
5	Bank and Post Office	Nil
6	Tourist Office	At airport
7	Remarks	Nil

**RJCN AD 2.6 RESCUE AND FIRE FIGHTING SERVICES**

1	AD category for fire fighting	CAT 8
2	Rescue equipment	Chemical fire fighting truck x 3, Emergency medical equipments conveyance truck x1
3	Capability for removal of disabled aircraft	Nil
4	Remarks	Nil

**RJCN AD 2.7 SEASONAL AVAILABILITY-CLEARING**

1	Types of clearing equipment	Snow removal equipments: 19
2	Clearance priorities	(1) RWY 08/26, TWY, APRON
3	Remarks	Nil

**RJCN AD 2.8 APRONS, TAXIWAYS AND CHECK LOCATIONS DATA**

1	Apron surface and strength	Surface : Concrete Strength : PCN 48/R/B/X/T
2	Taxiway width, surface and strength	Width : 30m Surface : Asphalt-concrete Strength : PCN 57/F/C/X/T
3	ACL and elevation	Not available
4	VOR checkpoints	Not available
5	INS checkpoints	Spot NR 1: 433423.88N, 1445719.30E 2: 433424.51N, 1445721.83E 3: 433425.06N, 1445724.04E
6	Remarks	Nil

**RJCN AD 2.9 SURFACE MOVEMENT GUIDANCE AND CONTROL SYSTEM AND MARKINGS**

1	Use of aircraft stand ID signs, TWY guide lines and Visual docking/ parking guidance system of aircraft stands	Aircraft stand ID signs: Nil ACFT stand taxi lane marking: See AD2.24 AD Chart Visual docking guidance system: Nil
2	RWY and TWY markings and LGT	RWY: RWY 08/26 (Marking): RWY designation, RWY CL, RWY side stripe, RWY THR, TDZ, Aiming point, RWY turn pad CL, RWY turn pad edge. (LGT): RCLL, REDL, RTHL, RENL, RTZL(RWY08), WBAR(RWY08), Turning point indicator LGT, RWY DIST marker LGT  TWY: (Marking):TWY CL, TWY side stripe, RWY HLDG PSN (LGT): TWY edge LGT, TWY CL LGT
3	Stop bars	Nil
4	Remarks	(Marking)Overrun area, Apron TWY CL (LGT)Apron flood LGT

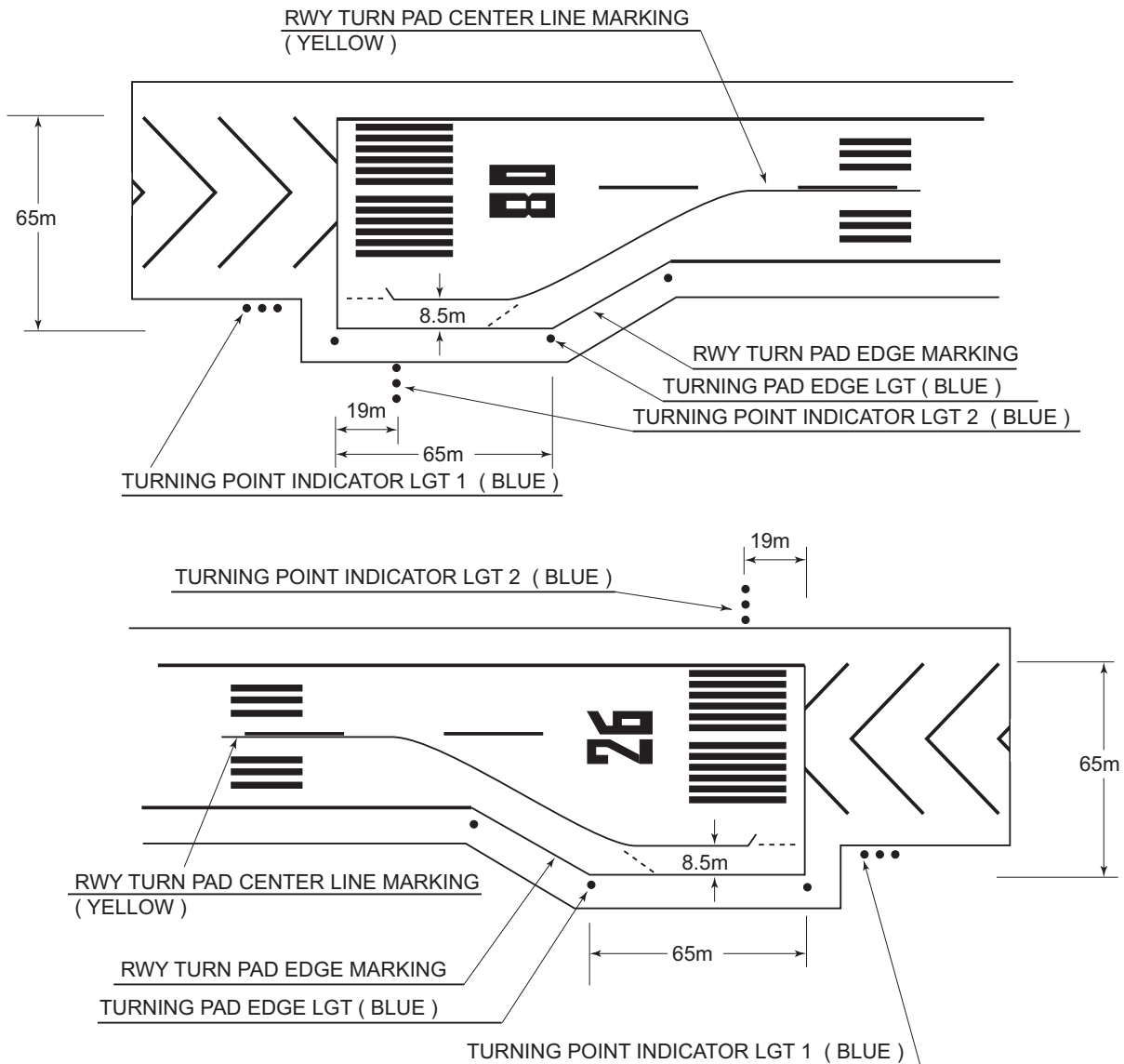
180° turn on RWY

B-767型機用の滑走路180° 転回実施要項

1. 滑走路中心線からターンニングパッド中心線標識に従って進行する。
2. 転回灯1が一直線に見えるように進行し，転回灯2が一直線に見えた時転回を開始する。

Procedure of 180° turn on RWY for B-767 aircraft

1. Proceed along the RWY Center Line Marking to the starting point of the RWY Turn Pad Center Line Marking ; then
2. Proceed along the RWY Turn Pad Center Line Marking to see the Turning Point Indicator Light 1 on a straight line, then commence turn at the spot where you (pilot) can see the Turning Point Indicator Light 2 on a straight line at an angle of 9 o'clock.



**RJCN AD 2.10 AERODROME OBSTACLES**

In approach/TKOF areas

RWY/Area affected	Obstacle type	Coordinates	Elevation	Markings/ LGT	Remarks
RWY08	Building	433426.9N/1445614.6E	282ft	-/LIL	Nil
RWY26	Tower	433449.9N/1445839.7E	233ft	-/LIL	Nil

In circling area and at AD

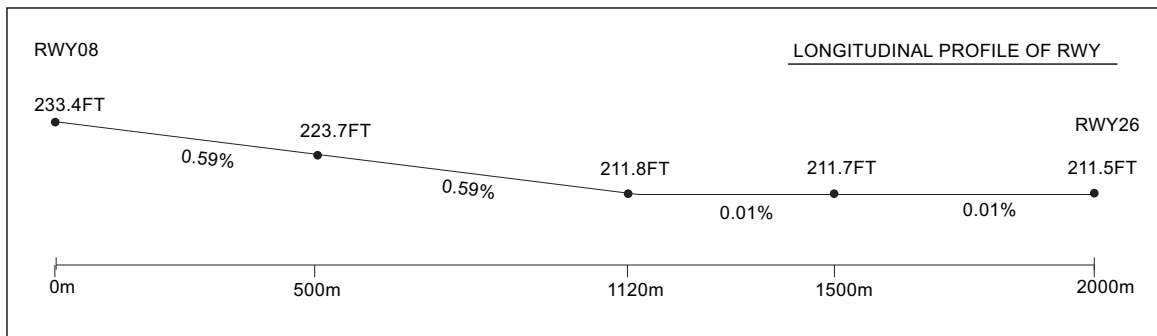
Obstacle type	Coordinates	Elevation	Markings/ LGT	Remarks
Nil				

**RJCN AD 2.11 METEOROLOGICAL INFORMATION PROVIDED**

1	Associated MET Office	NEW CHITOSE
2	Hours of service MET Office outside hours	H24 (NEW CHITOSE)
3	Office responsible for TAF preparation Periods of validity	Nil
4	Trend forecast Interval of issuance	Nil
5	Briefing/ consultation provided	Briefing is available upon inquiry at NEW CHITOSE
6	Flight documentation Language(s) used	C En
7	Charts and other information available for briefing or consultation	S <sub>6</sub> , U <sub>85</sub> , U <sub>7</sub> , U <sub>5</sub> , U <sub>3</sub> , U <sub>25</sub> , U <sub>2</sub> /T <sub>r</sub> , P <sub>S</sub> , P <sub>5</sub> , P <sub>3</sub> , P <sub>25</sub> , P <sub>SWE</sub> , P <sub>SWF</sub> , P <sub>SWG</sub> , P <sub>SWI</sub> , P <sub>SWM</sub> , P <sub>SW</sub> (domestic), E, C, W <sub>E</sub> , W <sub>F</sub> , W <sub>G</sub> , W <sub>I</sub> , W, N
8	Supplementary equipment available for providing information	Nil
9	ATS units provided with information	RADIO
10	Additional information (limitation of service, etc.)	Nil

**RJCN AD 2.12 RUNWAY PHYSICAL CHARACTERISTICS**

Designations RWY NR	TRUE BRG	Dimensions of RWY(M)	Strength(PCN) and surface of RWY	THR coordinates THR geoid undulation	THR elevation and highest elevation of TDZ of precision APP RWY
1	2	3	4	5	6
08	071.02°	2000x45	PCN 57/F/C/X/T Asphalt-concrete	433428.20N 1445653.10E 100.4ft	THR ELEV: 233.4FT TDZ ELEV: 230.5FT
26	251.02°	2000x45	PCN 57/F/C/X/T PCN 53/F/B/X/T(*1) Asphalt-concrete	433449.27N 1445817.40E 100ft	THR ELEV: 212FT
Slope of RWY	Strip Dimensions(M)	RESA(Overrun) Dimensions(M)	Remarks		
7	10	11	14		
See below figure	2120x300 2120x300	190x(MNM:136 MAX:300)* 40x300	RWY Grooving:2000x45m (*1)First 200m of RWY 26		
*For detail, ask airport administrator					



**RJCN AD 2.13 DECLARED DISTANCES**

RWY Designator	TORA (m)	TODA (m)	ASDA (m)	LDA (m)	Remarks
1	2	3	4	5	6
08	2000	2000	2000	2000	Nil
26	2000	2000	2000	2000	Nil

**RJCN AD 2.14 APPROACH AND RUNWAY LIGHTING**

RWY Designator	APCH LGT type LEN INTST	RTHL Color WBAR	PAPI (VASIS) Angle DIST FM THR MEHT	RTZL LEN	RCLL LEN Spacing Color INTST	REDL LEN Spacing Color INTST	RENL Color WBAR	STWL LEN Color
1	2	3	4	5	6	7	8	9
08	PALS (CAT I) 900m LIH	Green Green	PAPI 3.0°/Left 444m 60.4ft	900m	2000m 30m Coded color (White/Red) LIH	2000m 60m Coded color (White/Yellow) LIH	Red	Nil(*1)
26	SALS (*2) 420m LIH	Green -	PAPI 3.0°/Left 378m 61ft	-	2000m 30m Coded color (White/Red) LIH	2000m 60m Coded color (White/Yellow) LIH	Red	Nil(*1)
Remarks								
10								
Overrun area edge LGT(LEN:60m Color:Red)(*1) SALS with APCH LGT beacon(585m and 900m FM RWY THR)(*2)								

**RJCN AD 2.15 OTHER LIGHTING, SECONDARY POWER SUPPLY**

1	ABN/IBN location, characteristics and hours of operation	ABN: 433423N /1445745E, ALTN FLG(2)WG EV 4.3SEC, HO
2	LDI location and LGT Anemometer location and LGT	LDI:Nil Anemometer: RWY08:331m from RWY 08 THR, LGTD RWY26:513m from RWY 26 THR, LGTD
3	TWY edge and center line lighting	TWY edge and center line lights installed, see AD 2.9
4	Secondary power supply/ switch-over time	Within 1sec : REDL, RENL, RTHL, WBAR, RCLL, Turning point indicator LGT, Overrun area edge LGT Within 15sec : Other LGT
5	Remarks	WDI LGT

**RJCN AD 2.16 HELICOPTER LANDING AREA**

Nil
-----

## RJCN AD 2.17 ATS AIRSPACE

Designation and lateral limits		Vertical limits (ft)	Airspace classification	ATS unit call sign Language	Remarks
1		2	3	4	6
Nakashibetsu Information Zone	Area within a radius of 5NM(9km) of Nakashibetsu ARP	3000	E	Nakashibetsu Radio En	
Hidaka ACA	See RJEC attached chart		E	Hidaka APP En	

## RJCN AD 2.18 ATS COMMUNICATION FACILITIES

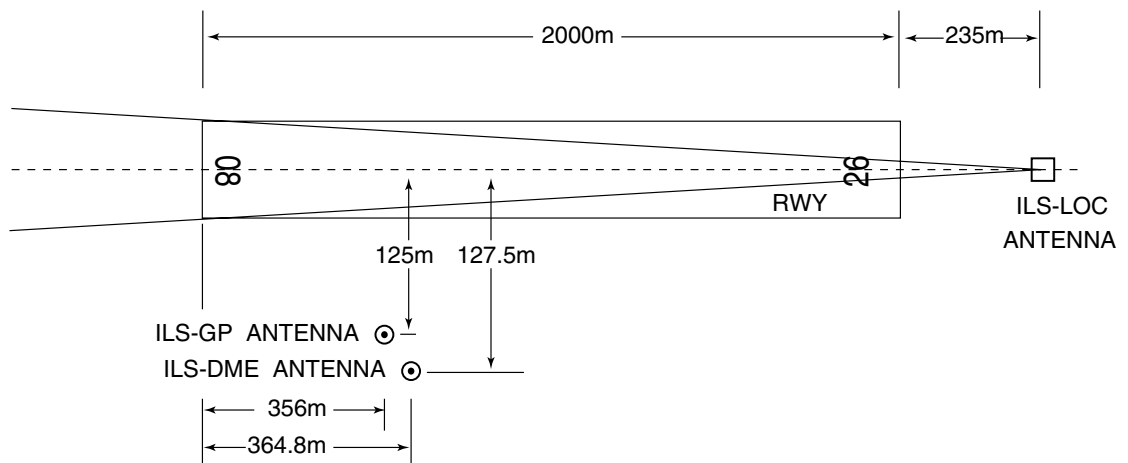
Service designation	Call sign	Frequency	Hours of operation	Remarks
1	2	3	4	5
APP	Hidaka Approach	128.325MHz 246.1MHz 134.55MHz 121.5MHz (E) 243.0MHz (E)	2230 - 1200	
AFIS	Nakashibetsu Radio	122.7MHz	2330 - 0930	Operated by New Chitose Airport Office.



**RJCN AD 2.19 RADIO NAVIGATION AND LANDING AIDS**

Type of aid (VOR declination)	ID	Frequency	Hours of operation	Position of transmitting antenna coordinates	Elevation of DME transmitting antenna	Remarks
1	2	3	4	5	6	7
VOR (9°W/2019)	NSE	111.45MHz	2330 - 0930	433438.50N/ 1445701.81E		VOR Unusable: 290°-300° beyond 30nm BLW 6000ft. 300°-310° beyond 25nm BLW 6000ft. 310°-320° beyond 30nm BLW 8000ft. 320°-340° beyond 25nm BLW 8000ft. 340°-350° beyond 20nm BLW 8000ft. 350°-010° beyond 30nm BLW 8000ft.
DME	NSE	1138MHz (CH-51Y)	2330 - 0930	433438.50N/ 1445701.81E	264ft	DME Unusable: 280°-300° beyond 30nm BLW 6000ft. 300°-310° beyond 25nm BLW 6000ft. 310°-320° beyond 30nm BLW 8000ft. 320°-340° beyond 25nm BLW 8000ft. 340°-350° beyond 15nm BLW 8000ft. 350°-010° beyond 30nm BLW 8000ft.
ILS-LOC 08	INS	109.35MHz	2330 - 0930	433451.74N/ 1445827.27E		LOC : 235m(771ft) away FM RWY 26 THR, BRG(MAG)080°.
ILS-GP 08	-	331.85MHz	2330 - 0930	433428.13N/ 1445709.91E		GP : 356m (1168ft) inside FM RWY 08 THR, 125m(410ft)S of RCL. Angle 3.0°, HGT of ILS Ref datum 16.5m (54ft).
ILS-DME	INS	1117MHz (CH-30Y)	2330 - 0930	433428.14N/ 1445710.30E	242ft	DME : 364.8m(1197ft) inside FM RWY 08 THR, 127.5m(418ft) S of RCL.
MSAS		1575.42MHz	H24			Transmitting antennas are satellite based.

ILS for RWY08



- REMARKS :
- |                         |              |
|-------------------------|--------------|
| 1. LOC beam BRG (MAG)   | 080°         |
| 2. GP Angle             | 3.0°         |
| 3. HGT of ILS REF datum | 16.5m(54 ft) |
| 4. ELEV of ILS-DME      | 73.6m(242ft) |

---

**RJCN AD 2.20 LOCAL TRAFFIC REGULATIONS**

## 1. Airport regulations

Nil
-----

## 2. Taxiing to and from stands

Nil
-----

## 3. Parking area for small aircraft(General aviation)

Nil
-----

## 4. Parking area for helicopters

Nil
-----

## 5. Apron - taxiing during winter conditions

Nil
-----

## 6. Taxiing - limitations

Nil
-----

## 7. School and training flights - technical test flights - use of runways

Nil
-----

## 8. Helicopter traffic - limitation

Nil
-----

## 9. Removal of disabled aircraft from runways

Nil
-----

**RJCN AD 2.21 NOISE ABATEMENT PROCEDURES**

Nil

**RJCN AD 2.22 FLIGHT PROCEDURES**

**1. TAKE OFF MINIMA**

	RWY	ACFT CAT	REDL & RCLL		REDL or RCLL or RCL Marking		NIL (DAYTIME ONLY)	
			RVR	VIS	RVR	VIS	RVR	VIS
Multi-Engine ACFT with TKOF ALTN AP FILED	08	A,B,C,D	400m	400m	400m	400m	-	500m
	26	A,B,C,D	-	400m	-	400m	-	500m
OTHER	08	A,B,C,D	AVBL LDG MINIMA					
	26	A,B,C,D						

**2. Lost communication procedures for arrival aircraft under radar navigational guidance**  
 If radio communications with Hidaka Approach are lost for 1 minute, squawk Mode A/3 Code 7600 and;

(I)

1. Contact Nakashibetsu Radio.
2. If unable, proceed in accordance with visual flight rules.
3. If unable, proceed to NAKASHIBETSU VOR/DME at last assigned altitude or 5,000 feet whichever is higher, and execute instrument approach.

(II) Procedures other than above will be issued when situation requires.

**RJCN AD 2.23 ADDITIONAL INFORMATION**

Nil

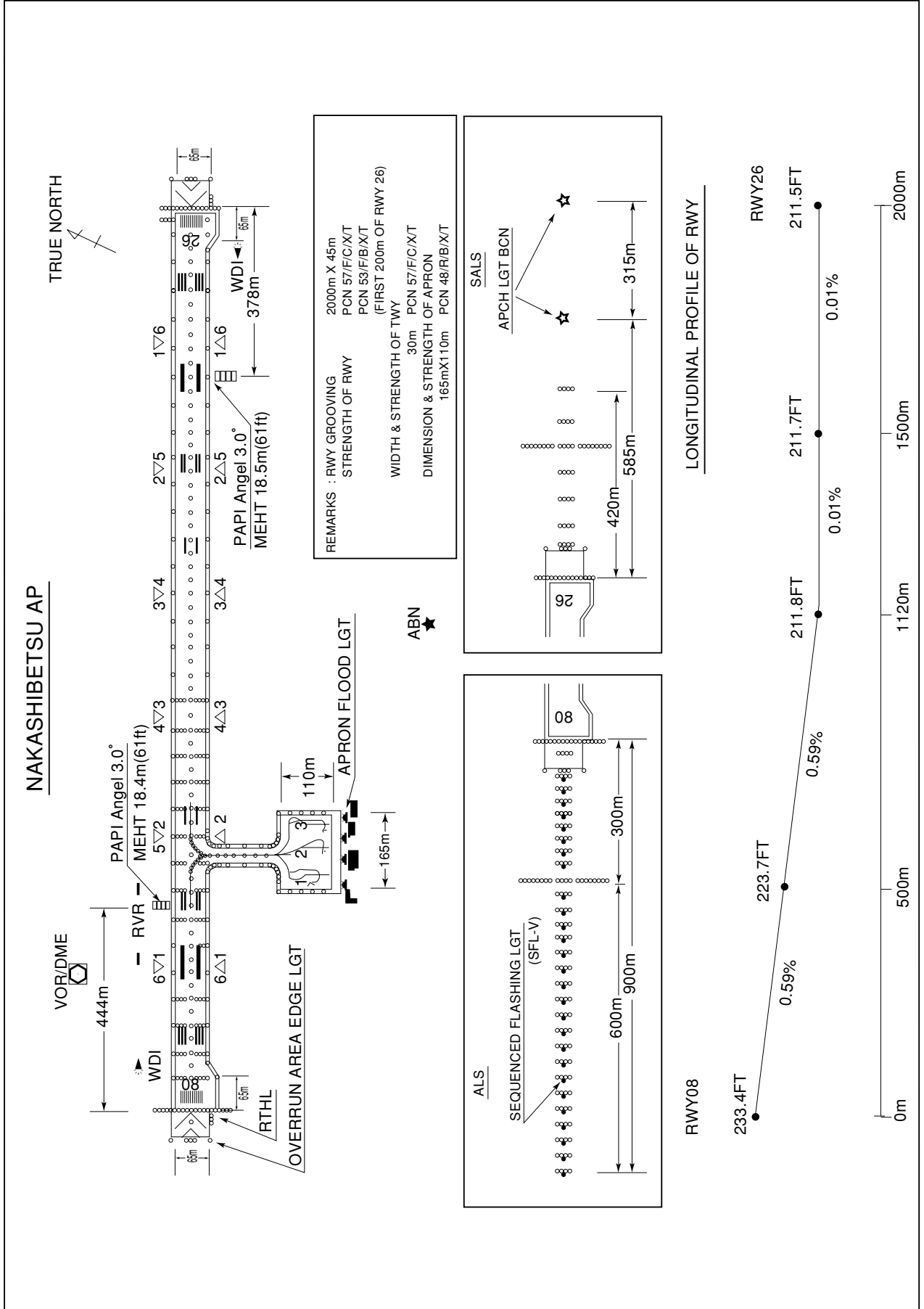
**RJCN AD 2.24 CHARTS RELATED TO AN AERODROME**

Aerodrome/Heliport Chart  
 Standard Departure Chart - Instrument (MASHU, NAKASHIBETSU REVERSAL)  
 Standard Departure Chart - Instrument (NOKIK-RNAV)  
 Standard Arrival Chart - Instrument (KUSHIRO-RNAV)  
 Instrument Approach Chart (ILS Z or LOC Z RWY08)  
 Instrument Approach Chart (ILS Y or LOC Y RWY08)  
 Instrument Approach Chart (VOR RWY08)  
 Instrument Approach Chart (VOR RWY26)  
 Instrument Approach Chart (RNP RWY08)  
 Instrument Approach Chart (RNP Z RWY26(AR))  
 Instrument Approach Chart (RNP Y RWY26)  
 Instrument Approach Chart (RNP X RWY26(AR))  
 Other Chart (Visual REP)  
 Other Chart (LDG CHART)  
 Other Chart (MVA CHART)

**INTENTIONALLY LEFT BLANK**

RJCN / NAKASHIBETSU

AD CHART



STANDARD DEPARTURE CHART-INSTRUMENT

RJCN / NAKASHIBETSU

SID

MASHU FIVE DEPARTURE

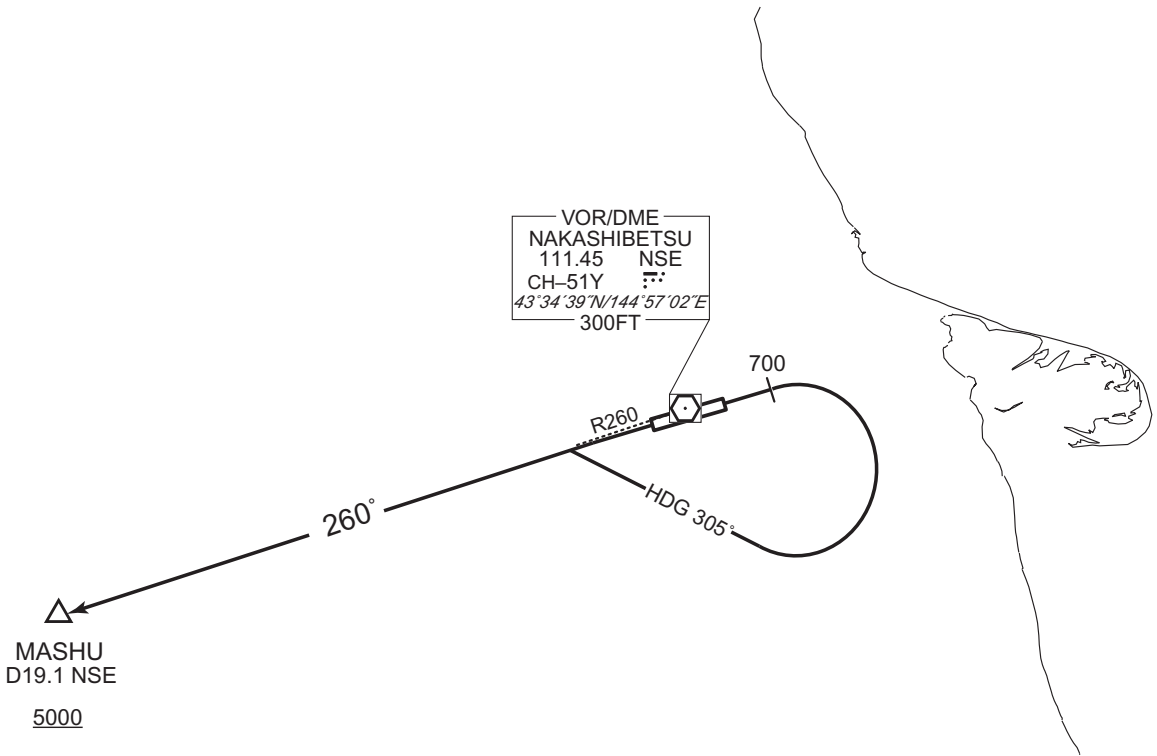
RWY08: Climb RWY HDG to 700FT, turn right HDG305° to intercept and proceed...

RWY26: Climb...

... via NSE R260 to MASHU.

Cross MASHU at or above 5000FT.

CHANGE : Description of PROC name.



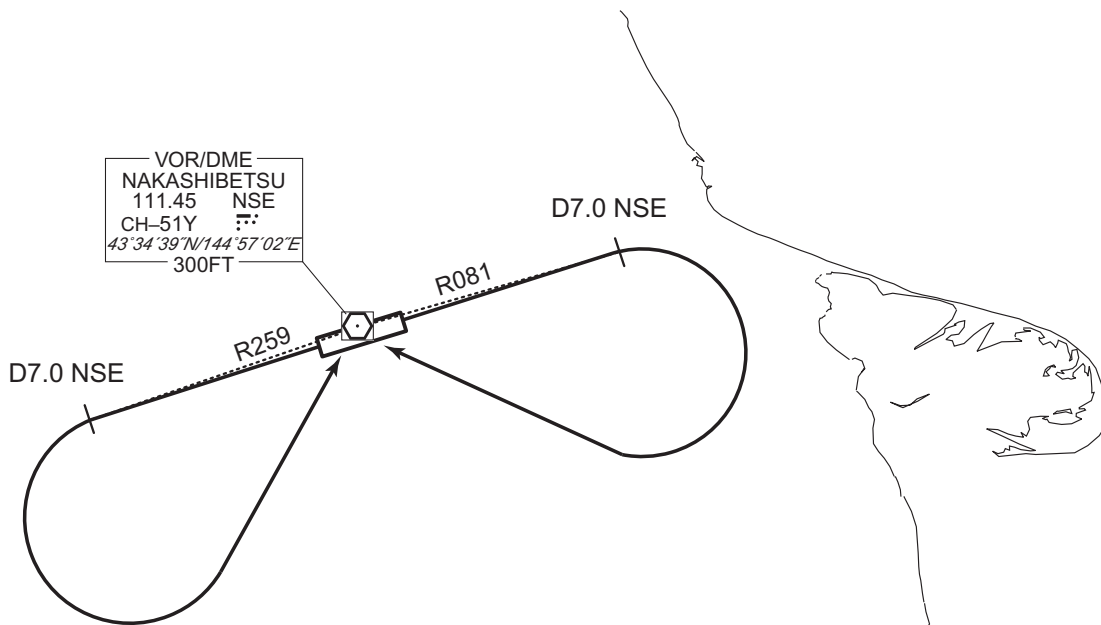
STANDARD DEPARTURE CHART-INSTRUMENT

RJCN / NAKASHIBETSU

SID

NAKASHIBETSU REVERSAL FOUR DEPARTURE

RWY08: Climb via NSE R081 to NSE 7.0DME, turn right,...  
RWY26: Climb via NSE R259 to NSE 7.0DME, turn left,...  
... direct to NSE VOR/DME.



CHANGE : Description of PROC name.

STANDARD DEPARTURE CHART-INSTRUMENT

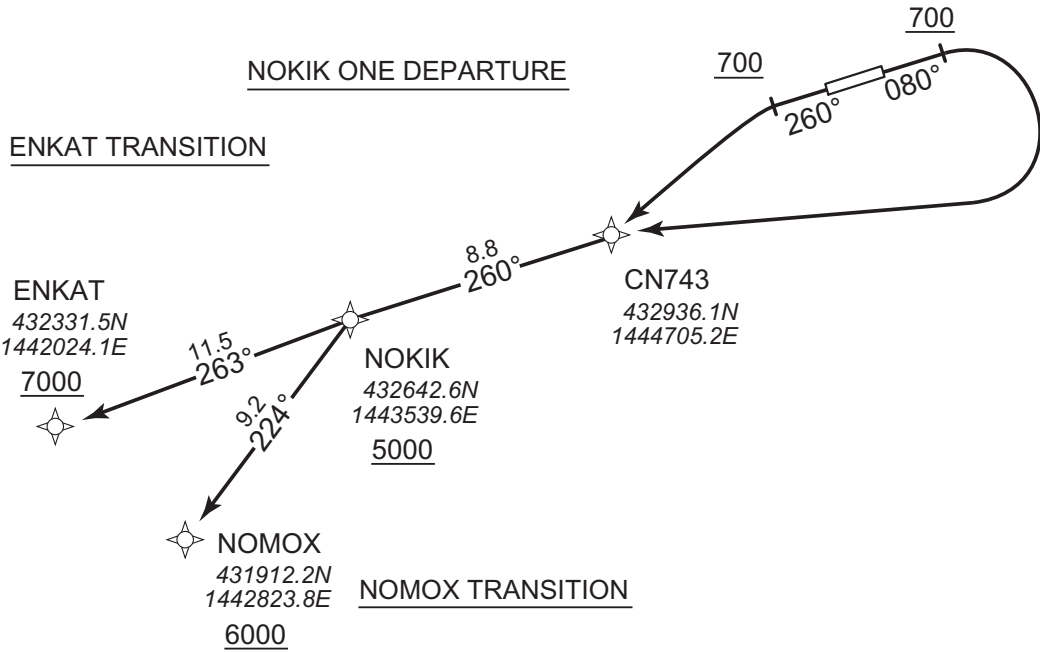
RJCN / NAKASHIBETSU

RNAV SID and TRANSITION

NOKIK ONE DEPARTURE ENKAT TRANSITION / NOMOX TRANSITION	RNP1
--	------

Note GNSS required.

VAR 9°W



NOKIK ONE DEPARTURE

RWY08 : Climb on HDG080° at or above 700FT, turn right direct to CN743, to NOKIK at or above 5000FT.  
 RWY26 : Climb on HDG260° at or above 700FT, turn left direct to CN743, to NOKIK at or above 5000FT.

ENKAT TRANSITION

From NOKIK at or above 5000FT, to ENKAT at or above 7000FT.

NOMOX TRANSITION

From NOKIK at or above 5000FT, to NOMOX at or above 6000FT.

CHANGE : New PROC.



STANDARD DEPARTURE CHART-INSTRUMENT

RJCN / NAKASHIBETSU

RNAV SID and TRANSITION

NOKIK ONE DEPARTURE

RWY08

Serial Number	Path Descriptor	Waypoint Identifier	Fly Over	Course °M(°T)	Magnetic Variation	Distance (NM)	Turn Direction	Altitude (FT)	Speed (KIAS)	Vertical Angle	Navigation Specification
001	VA	-	-	080 (071.0)	-9.3	-	-	+700	-	-	RNP1
002	DF	CN743	-	-	-9.3	-	R	-	-	-	RNP1
003	TF	NOKIK	-	260 (250.8)	-9.3	8.8	-	+5000	-	-	RNP1

RWY26

Serial Number	Path Descriptor	Waypoint Identifier	Fly Over	Course °M(°T)	Magnetic Variation	Distance (NM)	Turn Direction	Altitude (FT)	Speed (KIAS)	Vertical Angle	Navigation Specification
001	VA	-	-	260 (251.0)	-9.3	-	-	+700	-	-	RNP1
002	DF	CN743	-	-	-9.3	-	L	-	-	-	RNP1
003	TF	NOKIK	-	260 (250.8)	-9.3	8.8	-	+5000	-	-	RNP1

ENKAT TRANSITION

Serial Number	Path Descriptor	Waypoint Identifier	Fly Over	Course °M(°T)	Magnetic Variation	Distance (NM)	Turn Direction	Altitude (FT)	Speed (KIAS)	Vertical Angle	Navigation Specification
001	IF	NOKIK	-	-	-9.3	-	-	+5000	-	-	RNP1
002	TF	ENKAT	-	263 (254.1)	-9.3	11.5	-	+7000	-	-	RNP1

NOMOX TRANSITION

Serial Number	Path Descriptor	Waypoint Identifier	Fly Over	Course °M(°T)	Magnetic Variation	Distance (NM)	Turn Direction	Altitude (FT)	Speed (KIAS)	Vertical Angle	Navigation Specification
001	IF	NOKIK	-	-	-9.3	-	-	+5000	-	-	RNP1
002	TF	NOMOX	-	224 (215.2)	-9.3	9.2	-	+6000	-	-	RNP1

CHANGE : New PROC.

STANDARD ARRIVAL CHART - INSTRUMENT

RJCN / NAKASHIBETSU

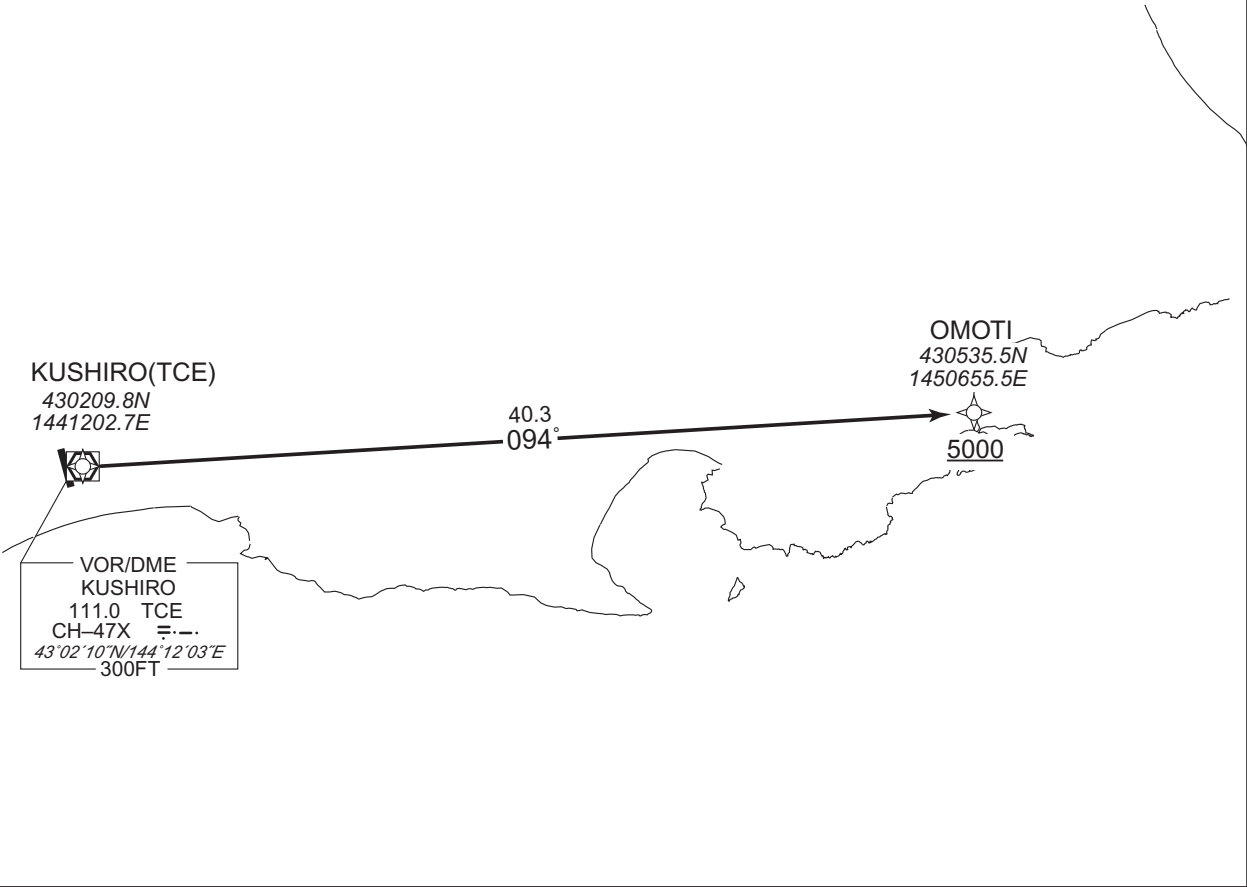
RNAV STAR

KUSHIRO ARRIVAL

RNP1

Note GNSS required.

VAR 9°W



From TCE, to OMOTI at or above 5000FT.

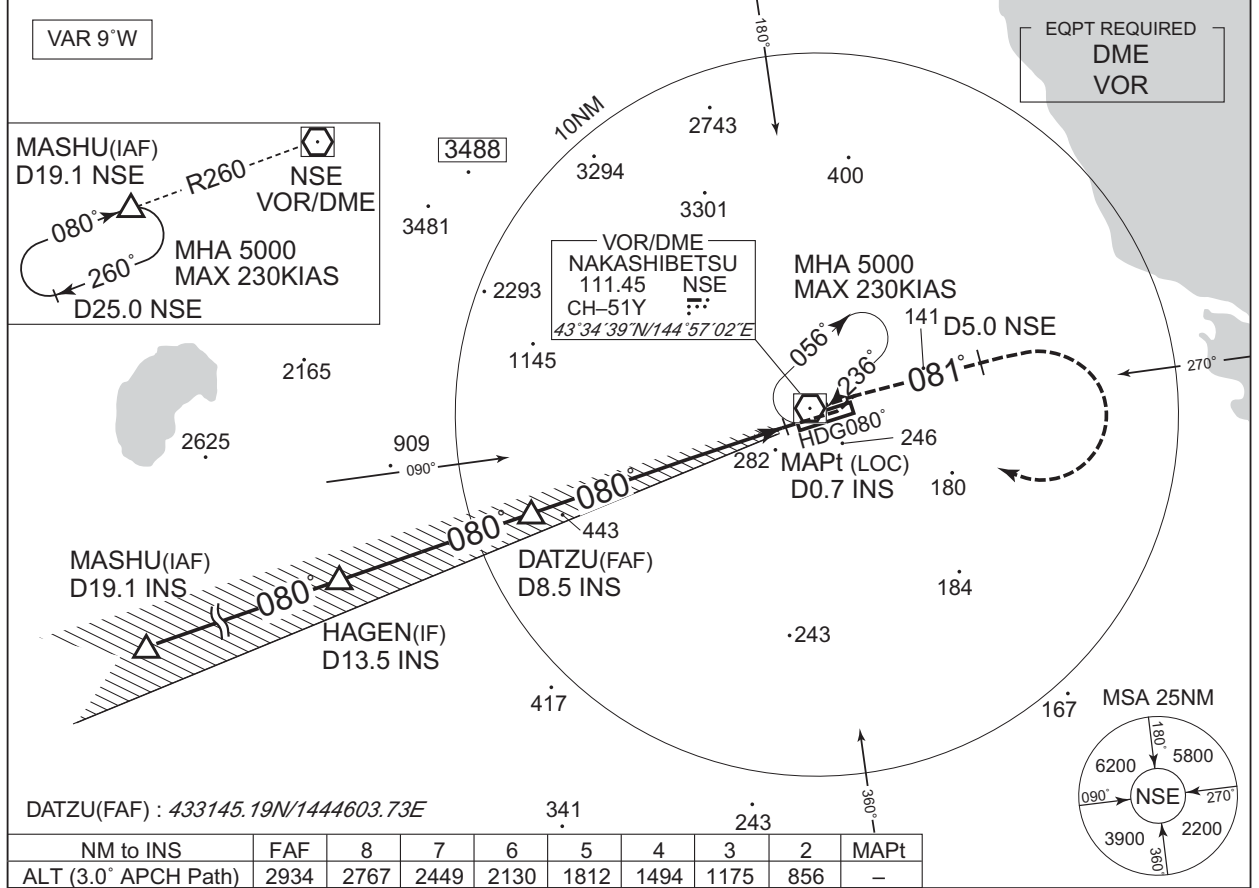
CHANGE : Navigation Specification(Basic RNP1 → RNP1).

Serial Number	Path Descriptor	Waypoint Identifier	Fly Over	Course °M(°T)	Magnetic Variation	Distance (NM)	Turn Direction	Altitude (FT)	Speed (KIAS)	Vertical Angle	Navigation Specification
001	IF	TCE	-	-	-9.2	-	-	-	-	-	RNP1
002	TF	OMOTI	-	094 (084.8)	-9.2	40.3	-	+5000	-	-	RNP1

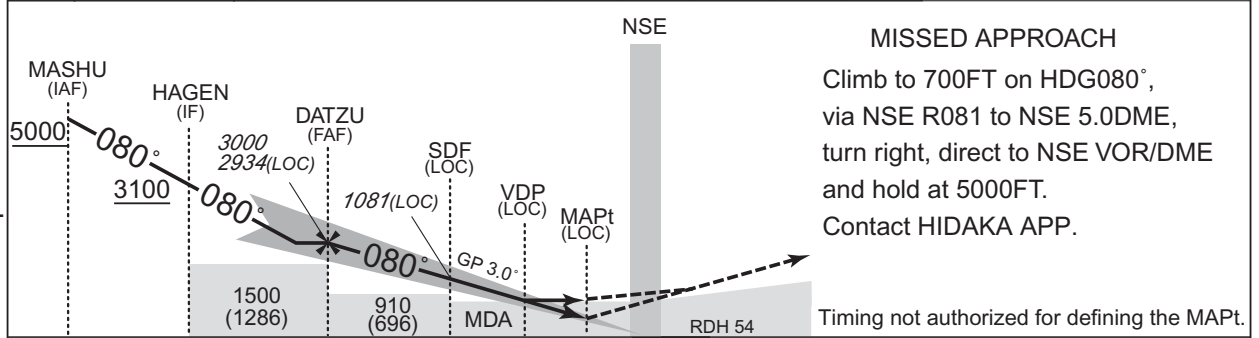
INSTRUMENT APPROACH CHART

RJCN / NAKASHIBETSU ILS Z or LOC Z RWY08

HIDAKA APP 128.325 - 246.1 - 134.55	ILS / LOC 109.35 INS :: ILS - GP 331.85 ILS-DME CH-30Y	NAKASHIBETSU RADIO 122.7 AFIS provided by New Chitose Airport Office	RADAR AVBL
--	---	---	------------



CHANGE : ATC call sign and FREQ. Description of RADAR Service. Missed APCH PROC.

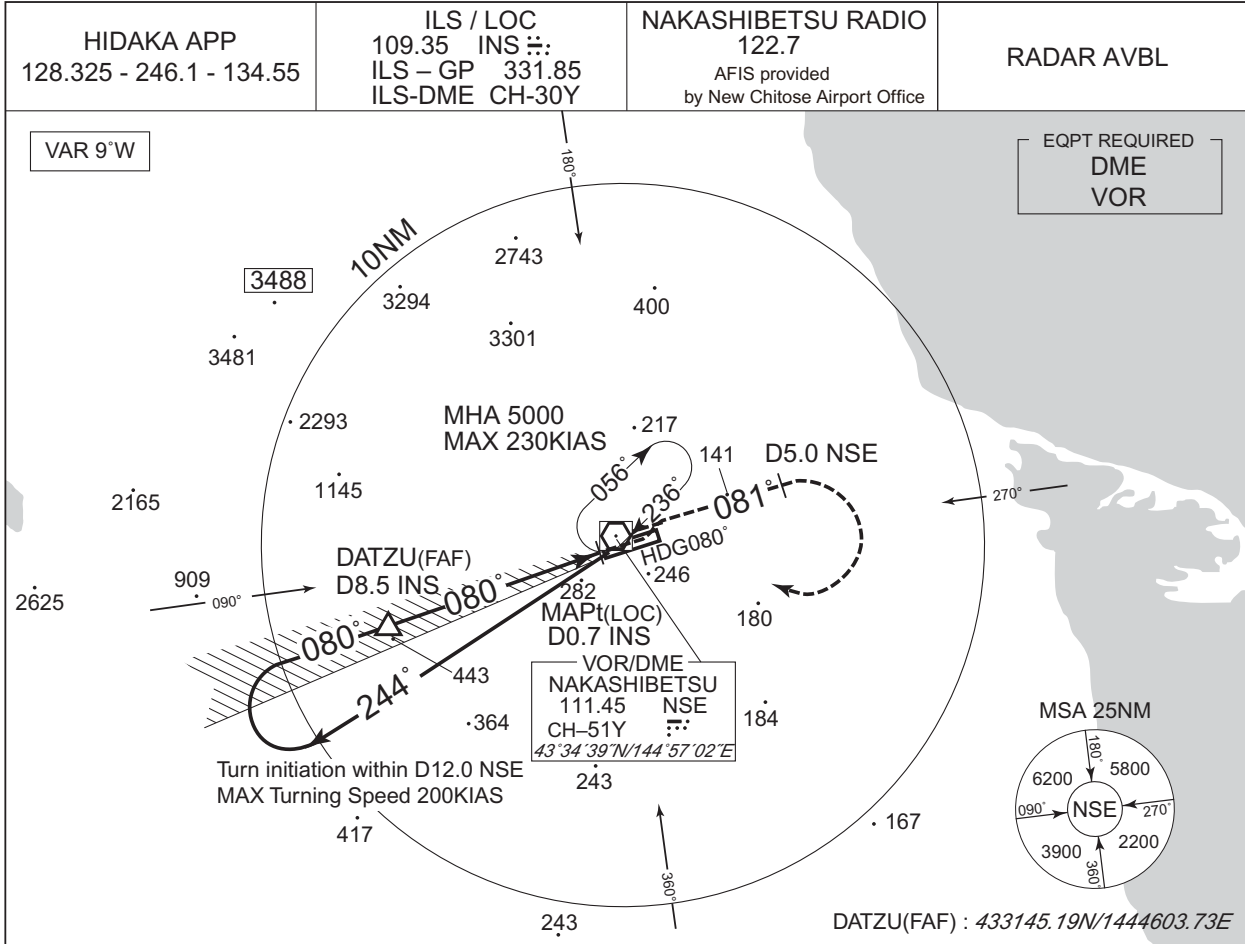


MINIMA		THR elev. 233		AD elev. 214		
CAT	CAT I		LOC		CIRCLING	
	DA(H)	RVR/CMV	MDA(H)	RVR/CMV	MDA(H)	VIS
A	433 (200)	550	640 (426)	900	690 (476)	1600
B				1000		
C				1400		
D				1400		
					770 (556)	3200

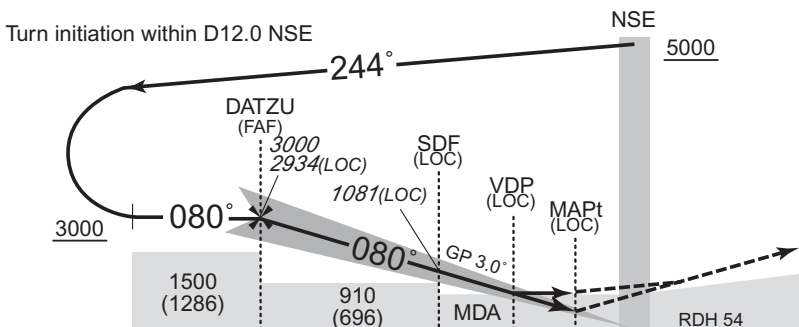
INSTRUMENT APPROACH CHART

RJCN / NAKASHIBETSU

ILS Y or LOC Y RWY08



CHANGE : ATC call sign and FREQ. Description of RADAR Service. Missed APCH PROC.



**MISSED APPROACH**  
Climb to 700FT on HDG080°, via NSE R081 to NSE 5.0DME, turn right, direct to NSE VOR/DME and hold at 5000FT. Contact HIDAKA APP.

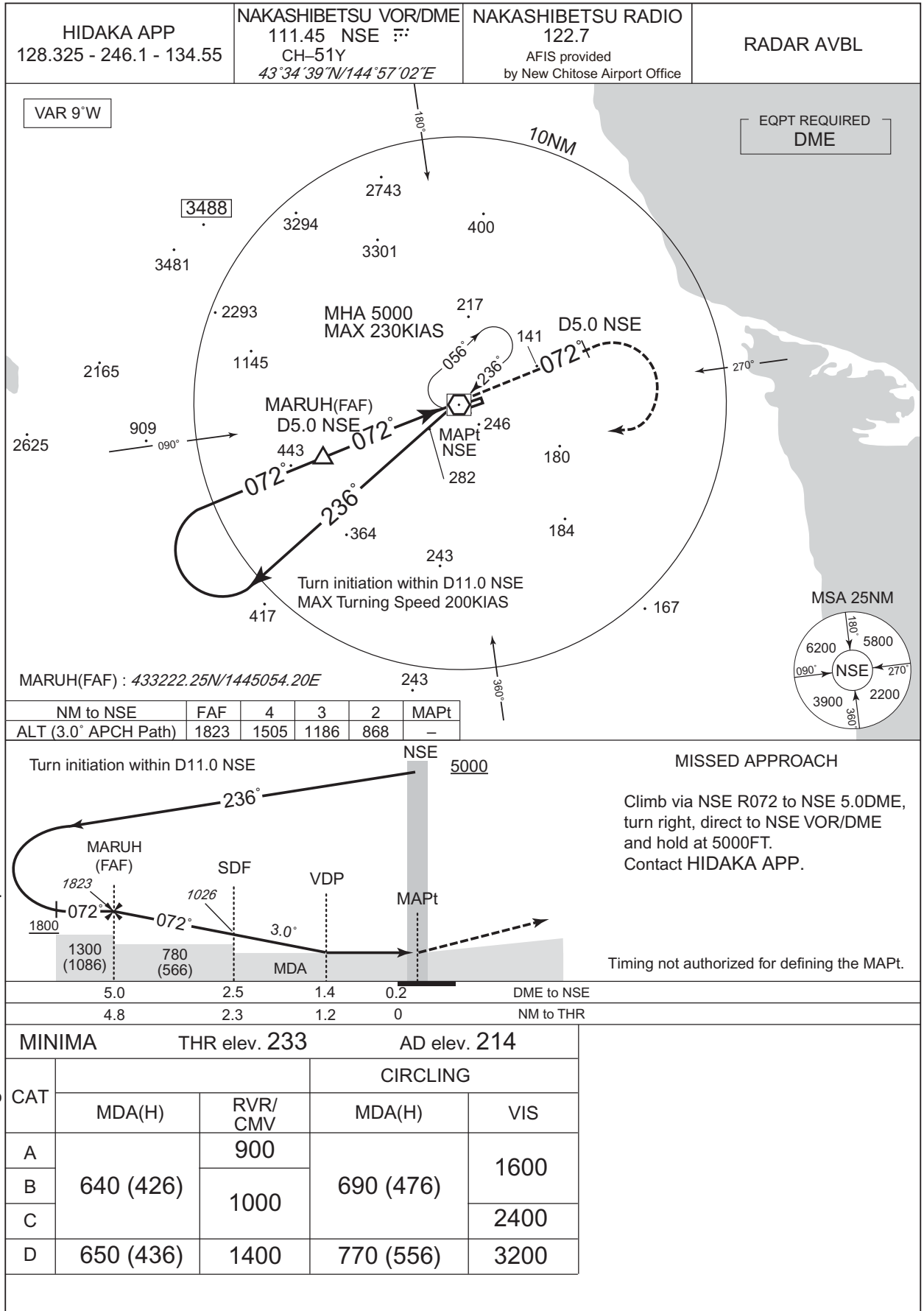
8.5	2.6	1.4	0.7	0.2	DME to INS
8.3	2.5	1.2	0.5	0	NM to THR

<b>MINIMA</b>		<b>THR elev. 233</b>		<b>AD elev. 214</b>			
CAT	CAT I		LOC		CIRCLING		
	DA(H)	RVR/CMV	MDA(H)	RVR/CMV	MDA(H)	VIS	
A	433 (200)	550	640 (426)	900	690 (476)	1600	
B				1000			
C				1400			2400
D				1400			770 (556)

INSTRUMENT APPROACH CHART

RJCN / NAKASHIBETSU

VOR RWY08

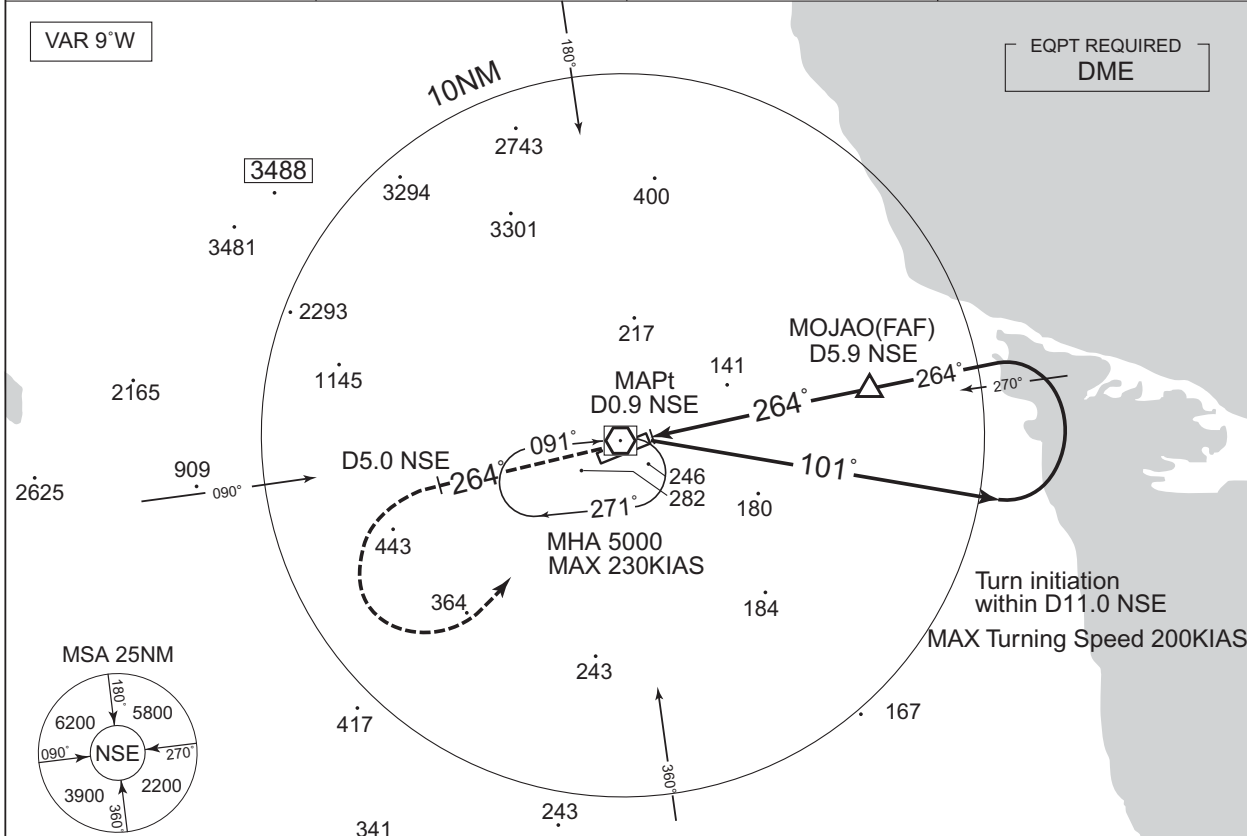


INSTRUMENT APPROACH CHART

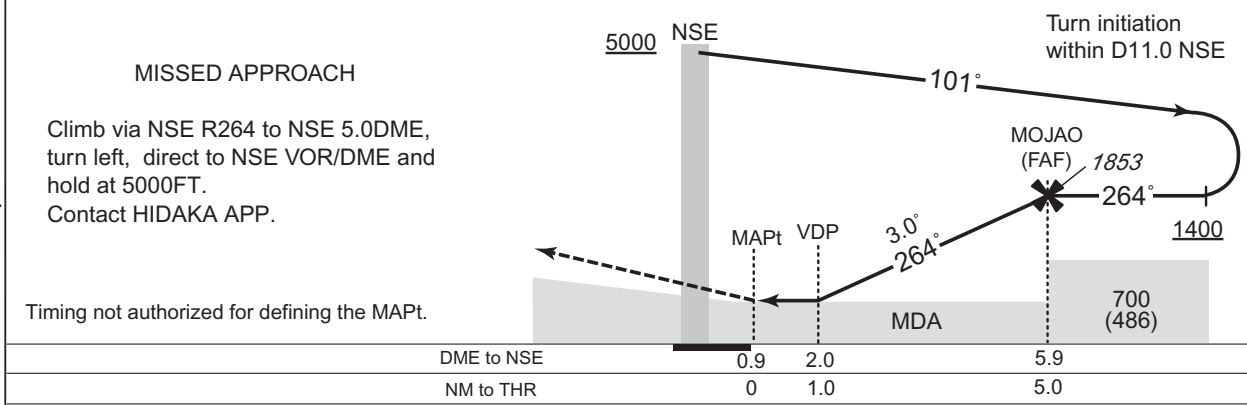
RJCN / NAKASHIBETSU

VOR RWY26

HIDAKA APP 128.325 - 246.1 - 134.55	NAKASHIBETSU VOR/DME 111.45 NSE $\ddot{\cdot}$ CH-51Y 43°34'39"N/144°57'02"E	NAKASHIBETSU RADIO 122.7 AFIS provided by New Chitose Airport Office	RADAR AVBL
--	---	---	------------



MOJAO(FAF) : 433608.06N/1450455.60E	NM to NSE	MAPt	2	3	4	5	FAF
	ALT (3.0° APCH Path)	-	602	920	1239	1557	1853



DME to NSE		0.9	2.0	5.9
NM to THR		0	1.0	5.0
MINIMA		THR elev. 212	AD elev. 214	
CAT			CIRCLING	
	MDA(H)	CMV	MDA(H)	VIS
A	580 (366)	1200	690 (476)	1600
B		1300		
C		1400	2400	
D		1600	770 (556)	3200

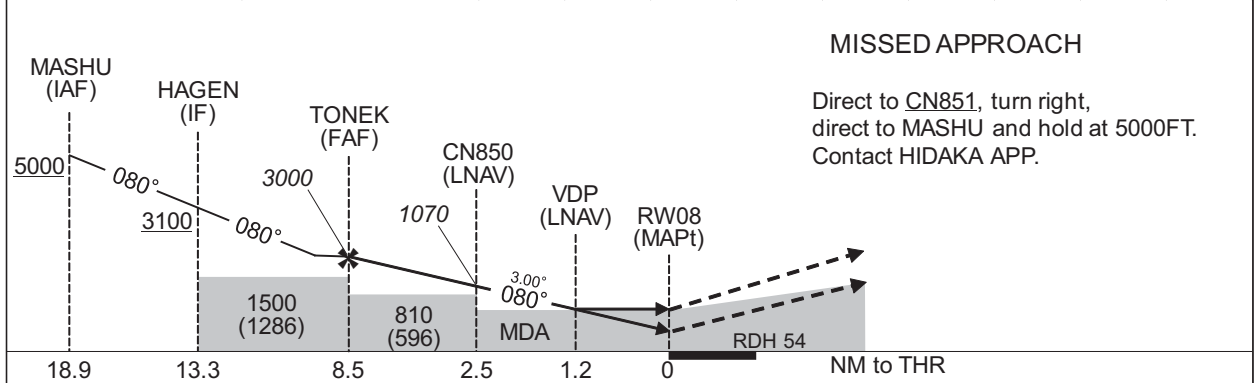
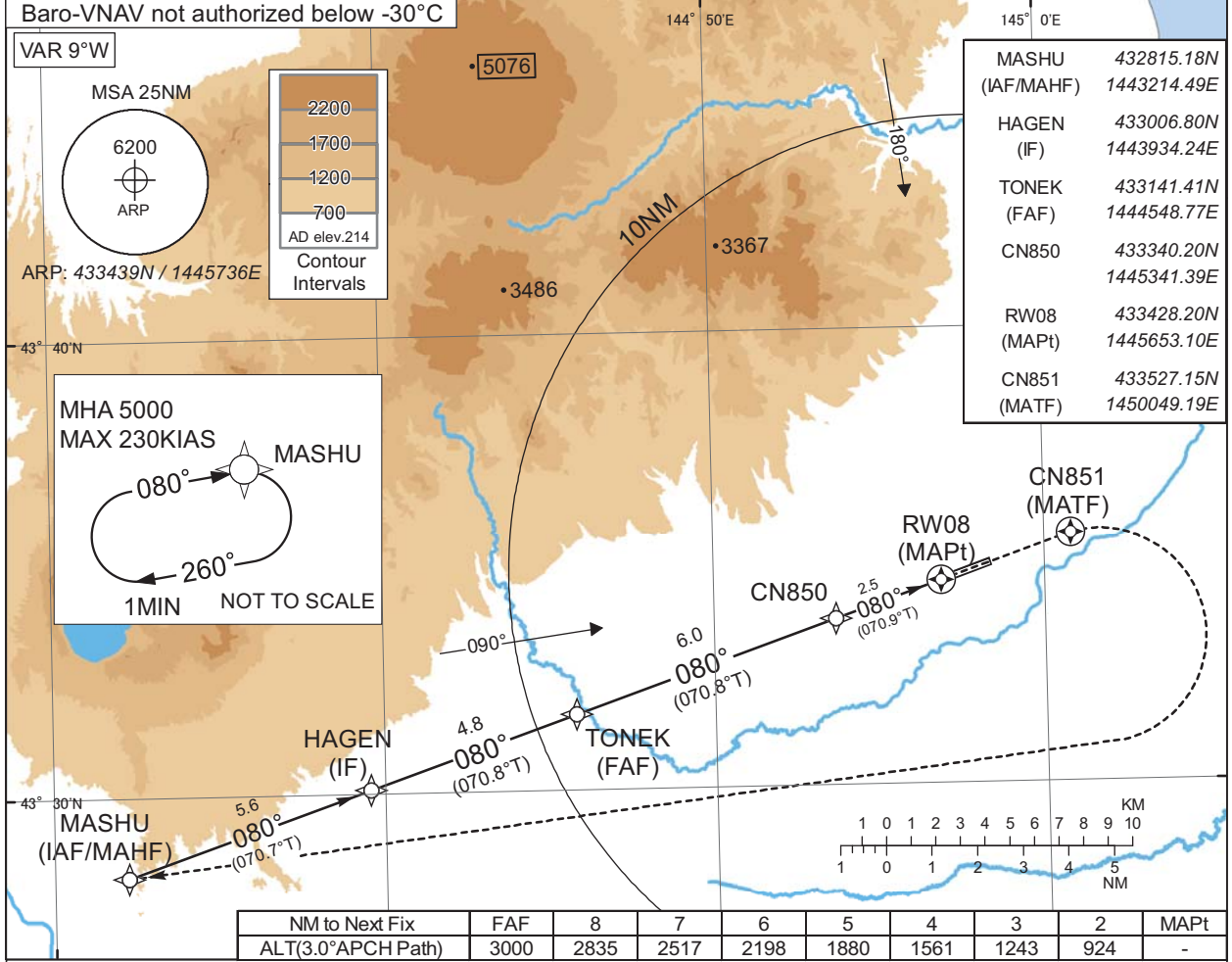
CHANGE : ATC call sign and FREQ. Description of RADAR Service. Missed APCH PROC.

INSTRUMENT APPROACH CHART

RJCN / NAKASHIBETSU

RNP RWY08

HIDAKA APP 128.325 - 246.1 - 134.55	RNP APCH MSAS CH59564 M08A	NAKASHIBETSU RADIO 122.7 AFIS provided by New Chitose Airport Office	RADAR AVBL
--	----------------------------------	---	------------



CHANGE : New PROC.	MINIMA	THR elev. 233	AD elev. 214						
	CAT	LPV		LNAV/VNAV		LNAV		CIRCLING	
		DA(H)	RVR/CMV	DA(H)	RVR/CMV	MDA(H)	RVR/CMV	MDA(H)	VIS
A	483(250)	800	640(407)	900	640(426)	900	690(476)	1600	
B	493(260)			1000		1000			
C	503(270)			1400		1400			2400
D	513(280)	1200			1400	770(556)	3200		

INSTRUMENT APPROACH CHART

RJCN / NAKASHIBETSU

RNP RWY08

**FAS DATA BLOCK**

Operation type	0	LTP/FTP ellipsoidal height	+01021
SBAS service provider identifier	2	FPAP latitude	433449.2600N
Airport identifier	RJCN	FPAP longitude	1445817.3505E
Runway	08	Threshold crossing height	00016.5
Approach performance designator	0	TCH units selector	1
Route indicator		Glide path angle	03.00
Reference path data selector	0	Course width at threshold	105.00
Reference path ID	M08A	∠ length offset	0000
LTP/FTP latitude	433428.1900N	HAL	40.0
LTP/FTP longitude	1445653.0495E	VAL	50.0
CRC remainder	71C61926		

**Required additional data**

LTP/FTP orthometric height	70.6
----------------------------	------

CHANGE : New PROC.



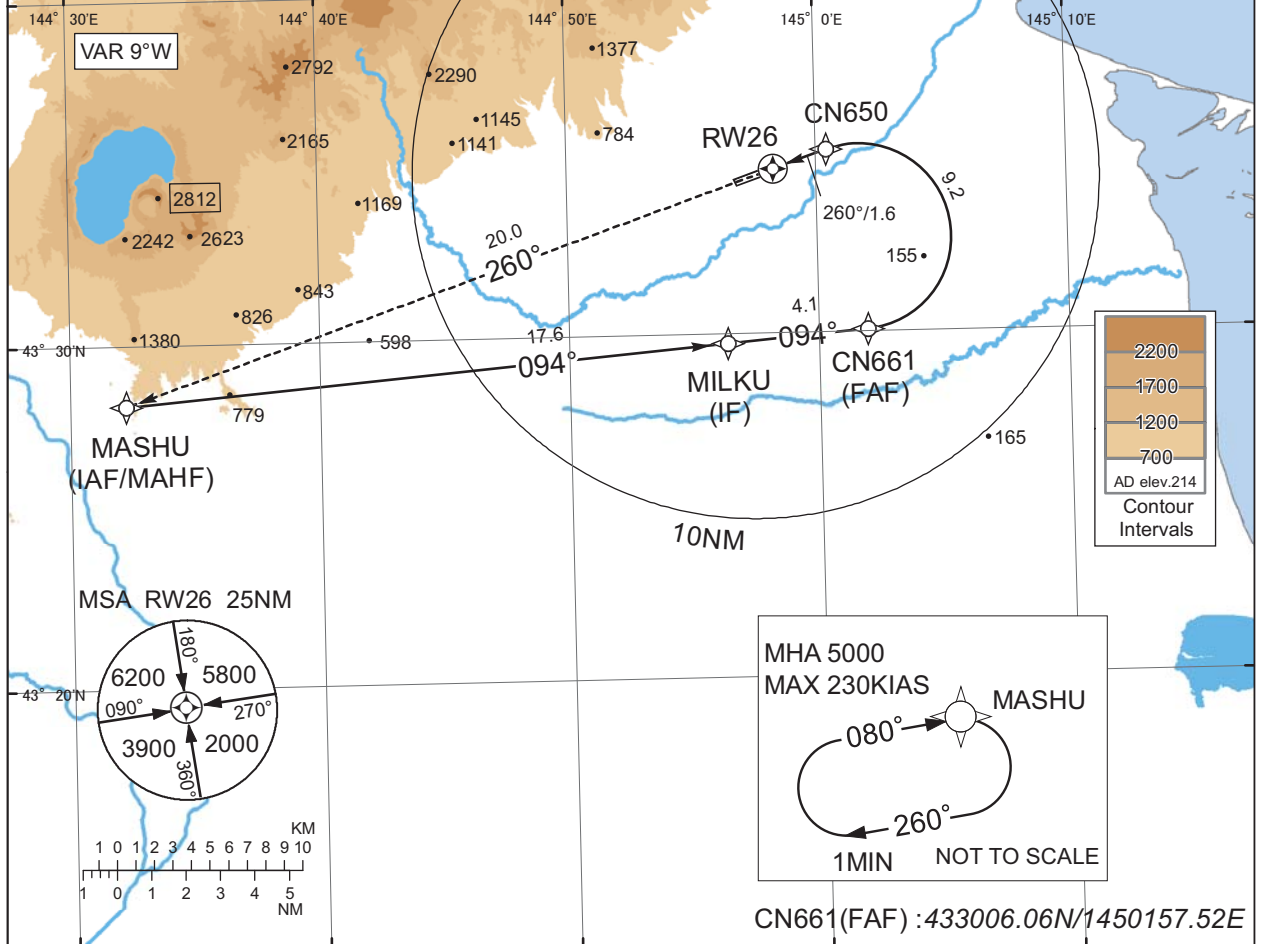
INSTRUMENT APPROACH CHART

RJCN / NAKASHIBETSU

RNP Z RWY26(AR)

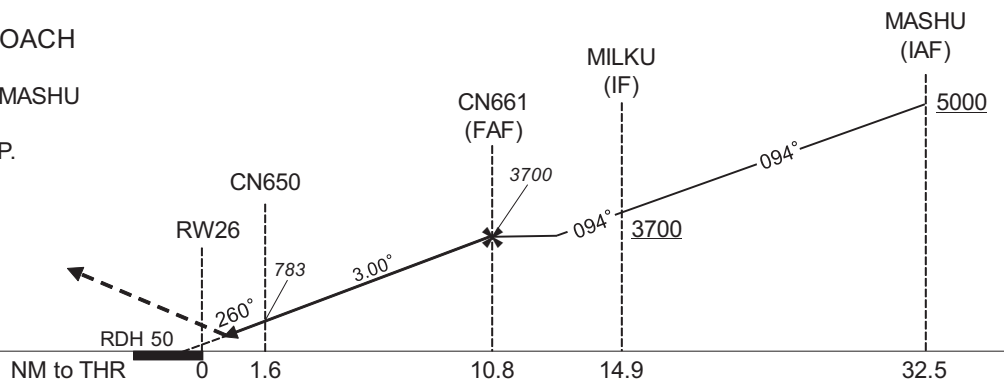
HIDAKA APP 128.325 - 246.1 - 134.55	RNP AR RF required	NAKASHIBETSU RADIO 122.7 AFIS provided by New Chitose Airport Office	RADAR AVBL
--	-----------------------	---	------------

For uncompensated Baro-VNAV systems, procedure not authorized below -30°C / above 45°C



MISSED APPROACH

Climb to 5000FT, to MASHU and hold.  
Contact HIDAKA APP.



CHANGE : HLDG pattern for using NAVAID abolished.

MINIMA	THR elev. 212	AD elev. 214
CAT	RNP 0.30	
	DA(H)	CMV
A	-	-
B	-	-
C	512(300)	1400
D	512(300)	1600

**Authorization Required**



INSTRUMENT APPROACH CHART

RJCN / NAKASHIBETSU

RNP Z RWY26(AR)

Coding Table

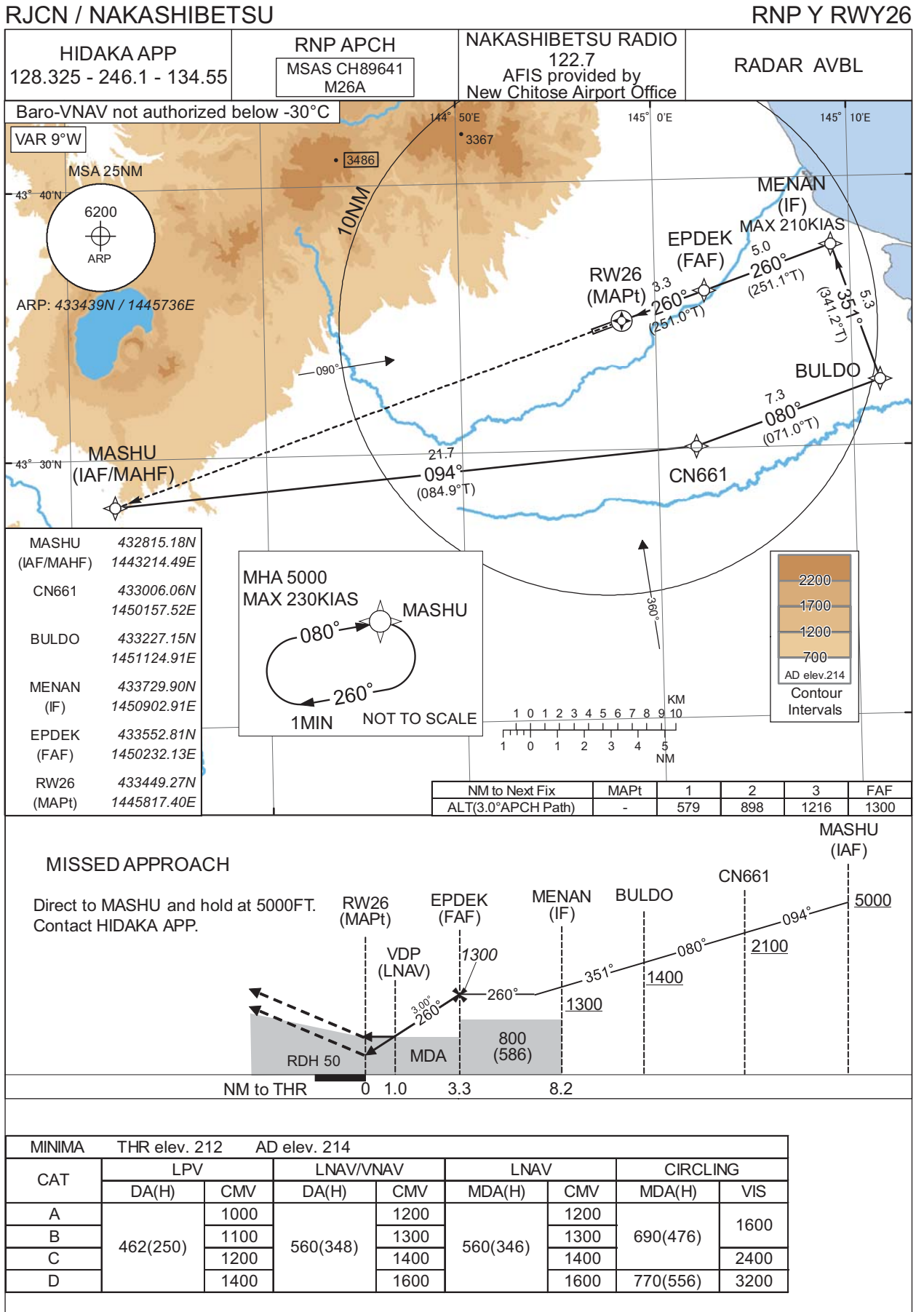
Serial Number	Path Descriptor	Waypoint Identifier	Fly Over	Course °M(°T)	Magnetic Variation	Distance (NM)	Turn Direction	Altitude (FT)	Speed (KIAS)	VPA/RDH (°/FT)	RNP Value
001	IF	MASHU	-	-	-9.2	-	-	+5000	-	-	-
002	TF	MILKU	-	094 (084.9)	-9.2	17.6	-	+3700	-	-	1.0
003	TF	CN661	-	094 (085.2)	-9.2	4.1	-	3700	-	-	1.0
004	RF Center: CNRF2 r=2.70NM	CN650	-	-	-9.2	9.2	L	783	-	-3.00	0.3
005	TF	RW26	Y	260 (251.0)	-9.2	1.6	-	262	-	-3.00/50	0.3
006	TF	MASHU	-	260 (251.0)	-9.2	20.0	-	5000	-	-	1.0

Path	Waypoint Identifier	Inbound Course °M(°T)	Magnetic Variation	Outbound Time (MIN)	Turn Direction	Minimum Altitude (FT)	Maximum Altitude (FT)	Speed (KIAS)	RNP Value
Hold	MASHU	080 (070.4)	-9.2	1.0 (-14000)	R	5000	FL140	-230 (-14000)	1.0

Waypoint Coordinates

Waypoint Identifier	Coordinates	RF Arc Center Identifier	Coordinates
MASHU	432815.18N / 1443214.49E	CNRF2	433247.93N / 1450139.17E
MILKU	432945.72N / 1445620.67E		
CN661	433006.06N / 1450157.52E		
CN650	433521.30N / 1450025.71E		
RW26	433449.27N / 1445817.40E		

INSTRUMENT APPROACH CHART



## INSTRUMENT APPROACH CHART

RJCN / NAKASHIBETSU

RNP Y RWY26

**FAS DATA BLOCK**

Operation type	0	LTP/FTP ellipsoidal height	+00954
SBAS service provider identifier	2	FPAP latitude	433428.1900N
Airport identifier	RJCN	FPAP longitude	1445653.0495E
Runway	26	Threshold crossing height	00015.0
Approach performance designator	0	TCH units selector	1
Route indicator	Y	Glide path angle	03.00
Reference path data selector	0	Course width at threshold	105.00
Reference path ID	M26A	∠ length offset	0000
LTP/FTP latitude	433449.2600N	HAL	40.0
LTP/FTP longitude	1445817.3505E	VAL	50.0
CRC remainder	12630585		

**Required additional data**

LTP/FTP orthometric height	63.9
----------------------------	------

CHANGE : New PROC.

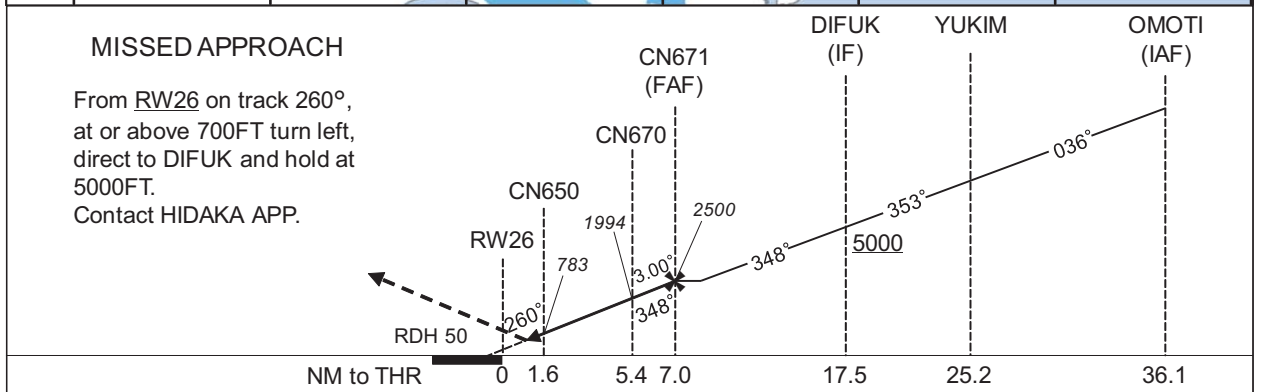
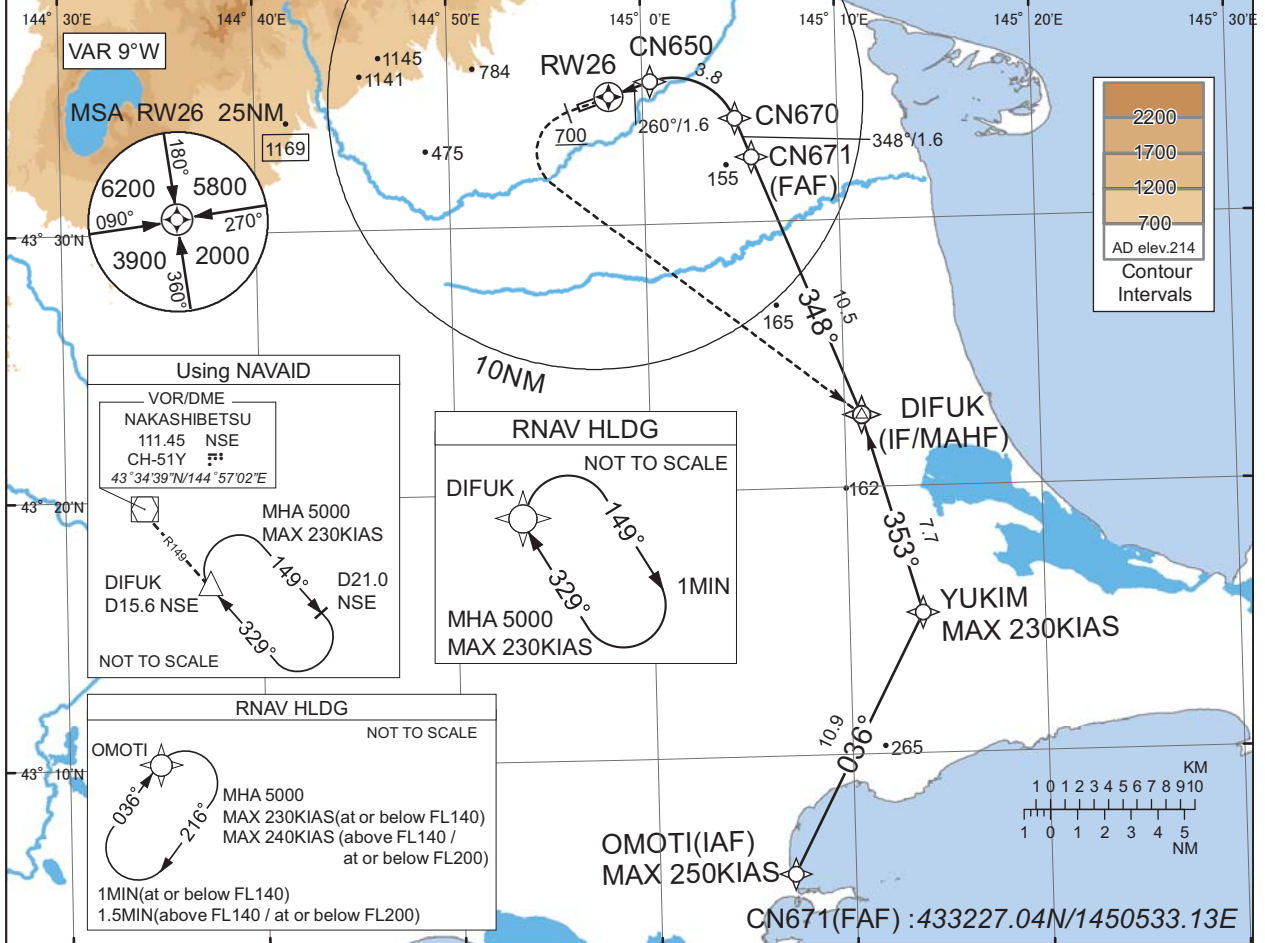
INSTRUMENT APPROACH CHART

RJCN / NAKASHIBETSU

RNP X RWY26(AR)

HIDAKA APP 128.325 - 246.1 - 134.55	RNP AR RF required	NAKASHIBETSU RADIO 122.7 AFIS provided by New Chitose Airport Office	RADAR AVBL
--	-----------------------	---	------------

For uncompensated Baro-VNAV systems, procedure not authorized below -30°C / above 45°C



Missed APCH climb gradient MNM 5.0%

MINIMA	THR elev. 212	AD elev. 214
CAT	RNP 0.30	
	DA(H)	CMV
A	-	-
B	-	-
C	512(300)	1400
D	-	1600

**Authorization Required**

MINIMA with Missed APCH climb gradient of 2.5% are not established.

CHANGE : PROC renamed.

INSTRUMENT APPROACH CHART

RJCN / NAKASHIBETSU

RNP X RWY26(AR)

Coding Table

Serial Number	Path Descriptor	Waypoint Identifier	Fly Over	Course °M(°T)	Magnetic Variation	Distance (NM)	Turn Direction	Altitude (FT)	Speed (KIAS)	VPA/RDH (°/FT)	RNP Value
001	IF	OMOTI	-	-	-9.2	-	-	+5000	-250	-	-
002	TF	YUKIM	-	036 (027.2)	-9.2	10.9	-	+5000	-230	-	1.0
003	TF	DIFUK	-	353 (344.3)	-9.2	7.7	-	+5000	-	-	1.0
004	TF	CN671	-	348 (338.4)	-9.2	10.5	-	2500	-	-	1.0
005	TF	CN670	-	348 (338.3)	-9.2	1.6	-	1994	-	-3.00	0.3
006	RF Center: CNRF1 r=2.50NM	CN650	-	-	-9.2	3.8	L	783	-	-3.00	0.3
007	TF	RW26	Y	260 (251.0)	-9.2	1.6	-	262	-	-3.00/50	0.3
008	FA	-	-	260 (251.0)	-9.2	-	-	+700	-	-	1.0
009	DF	DIFUK	-	-	-9.2	-	L	5000	-	-	1.0

Path	Waypoint Identifier	Inbound Course °M(°T)	Magnetic Variation	Outbound Time (MIN)	Turn Direction	Minimum Altitude (FT)	Maximum Altitude (FT)	Speed (KIAS)	RNP Value
Hold	DIFUK	329 (320.0)	-9.2	1.0 (-14000)	R	5000	FL140	-230(-14000)	1.0
Hold	OMOTI	036 (027.1)	-9.2	1.0 (-14000) 1.5 (-20000)	R	5000	FL200	-230(-14000) -240(-20000)	1.0

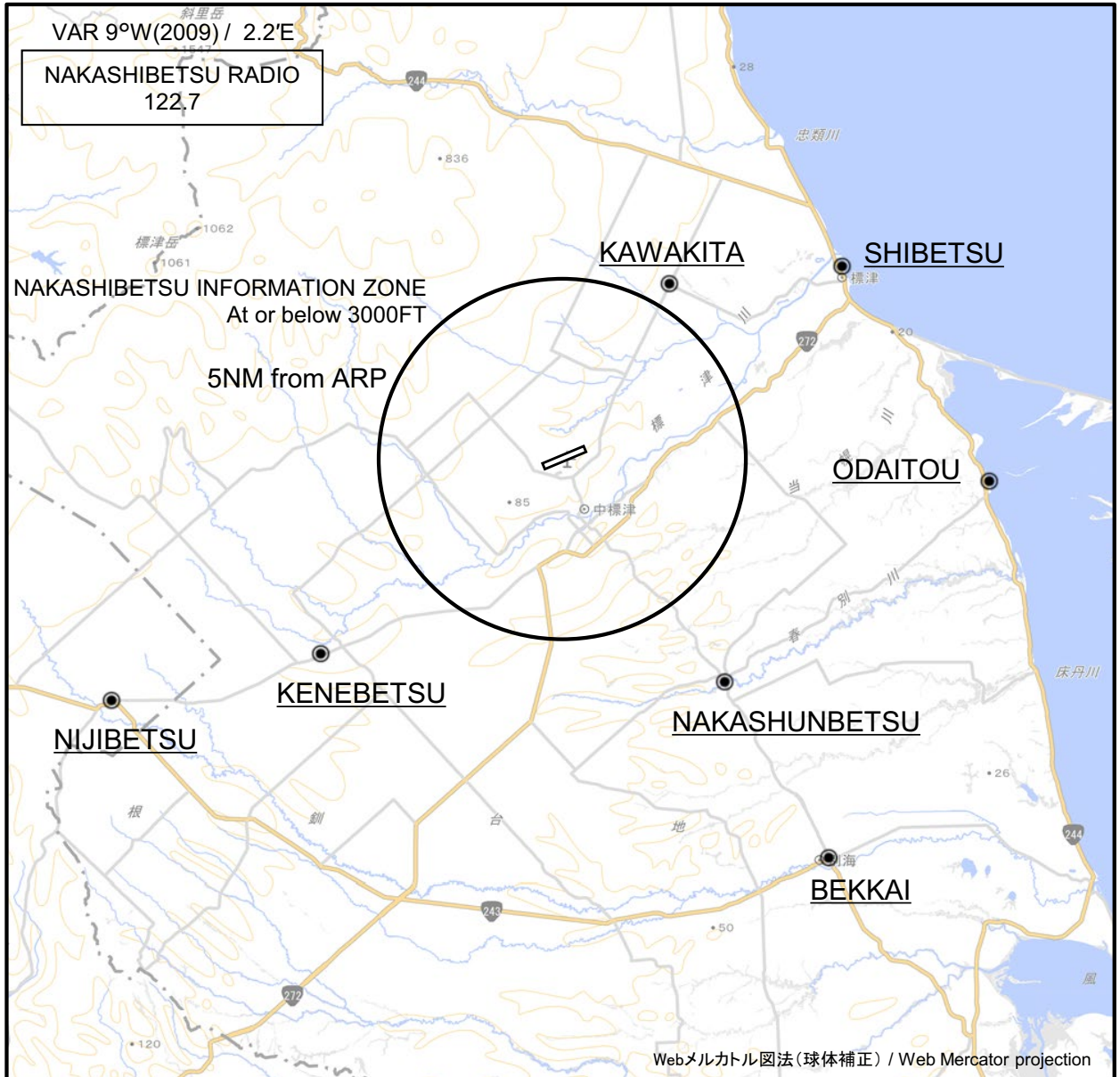
Waypoint Coordinates

Waypoint Identifier	Coordinates	RF Arc Center Identifier	Coordinates
OMOTI	430535.54N / 1450655.47E	CNRF1	433259.00N / 1450132.84E
YUKIM	431516.17N / 1451345.84E		
DIFUK	432242.79N / 1451052.79E		
CN671	433227.04N / 1450533.13E		
CN670	433354.84N / 1450444.93E		
CN650	433521.30N / 1450025.71E		
RW26	433449.27N / 1445817.40E		

CHANGE : PROC renamed.

RJCN / NAKASHIBETSU

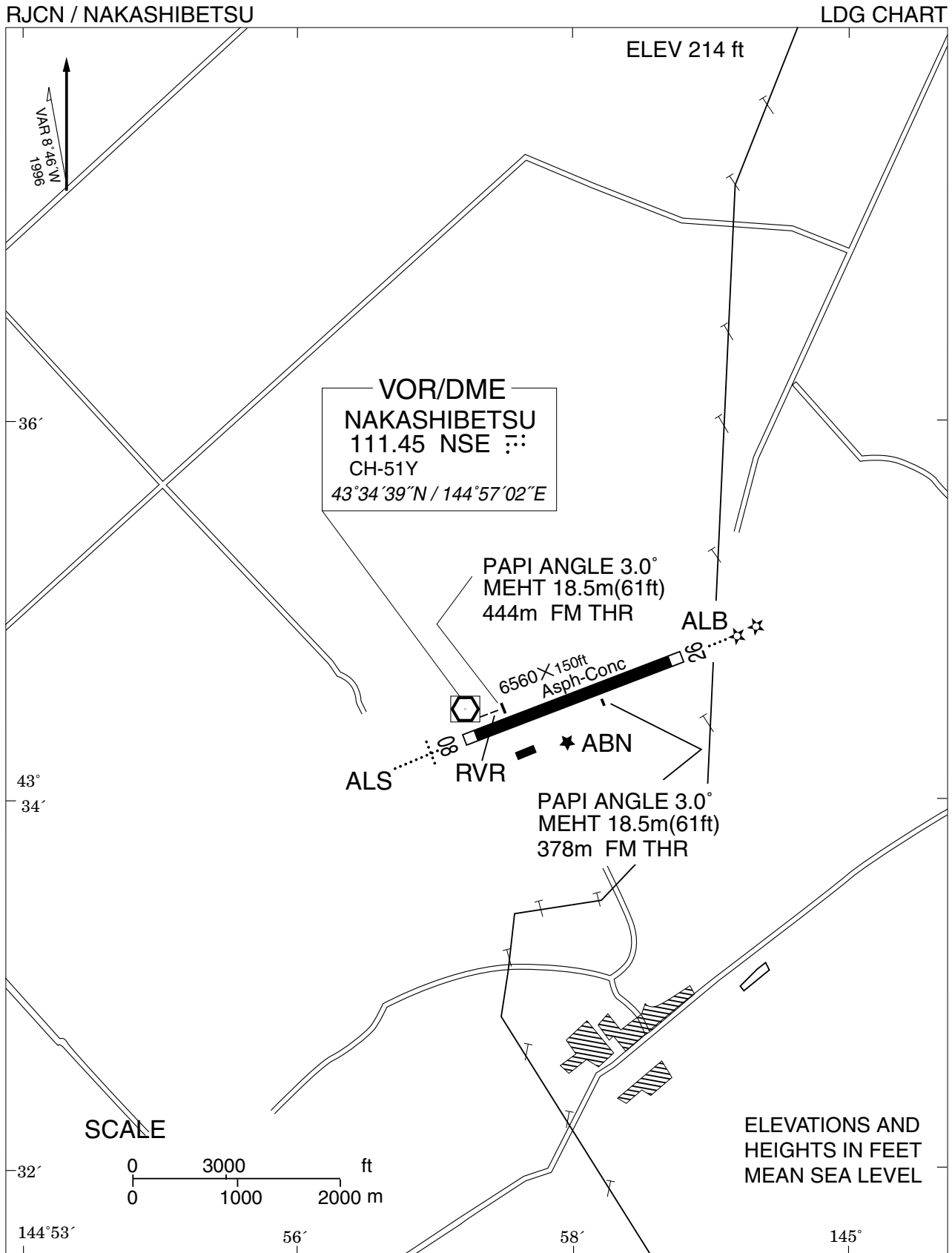
Visual REP



※図中に標高を示す数字がある場合、単位はメートル(m)である。The unit of measurement used to express elevation is meter(m).

CHANGE : Call sign(REMOTE→RADIO).

Call sign	BRG / DIST from ARP	Remarks
標津 Shibetsu	055°T / 9.1NM	標津港 Harbor
川北 Kawakita	030°T / 5.6NM	市街地 Town
尾岱沼 Odaitou	093°T / 11.5NM	尾岱沼港 Harbor
計根別 Kenebetsu	231°T / 8.5NM	市街地 Town
中春別 Nakashunbetsu	145°T / 7.5NM	市街地 Town
虹別 Nijibetsu	242°T / 13.9NM	市街地 Town
別海 Bekkai	147°T / 13.1NM	市街地 Town





RJCN / NAKASHIBETSU

Minimum Vectoring Altitude CHART

