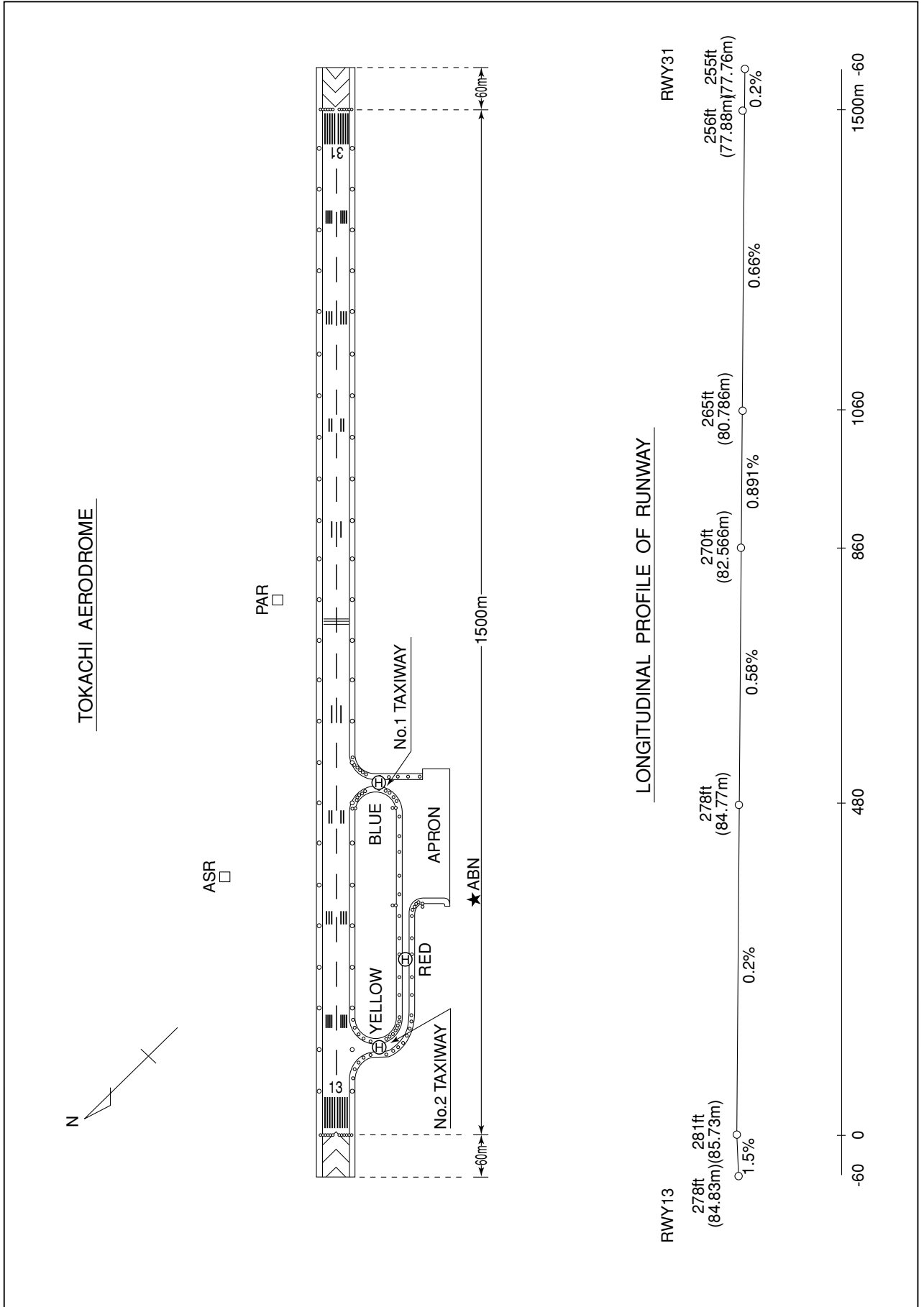


RJCT / TOKACHI

AD CHART



**INTENTIONALLY LEFT BLANK**

STANDARD DEPARTURE CHART - INSTRUMENT

RJCT/TOKACHI

SID and TRANSITION

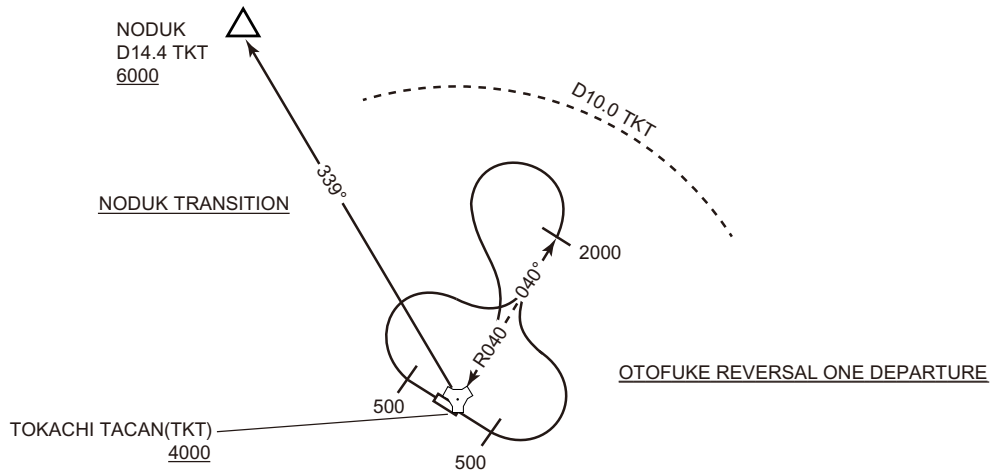
CHANGE : PROC renamed(HONBETSU TWO DEPARTURE, NODUK TRANSITION). PROC course. NOTAK and EATAK abolished.  
NODUK and RUGMO established.

OTOFUKE REVERSAL ONE DEPARTURE

RWY13 : Climb RWY HDG to 500FT, turn left,...  
 RWY31 : Climb RWY HDG to 500FT, turn right,...  
 ...to intercept and proceed via TKT R040 to 2000FT, turn left  
 within TKT 10.0DME to intercept and proceed via TKT R040 to TKT TACAN.  
 Cross TKT TACAN at or above 4000FT.  
 Note RWY13 : 5.3% climb gradient required up to 500FT.  
 OBST ALT 340FT located at 0.3NM 157°FM end of RWY13.

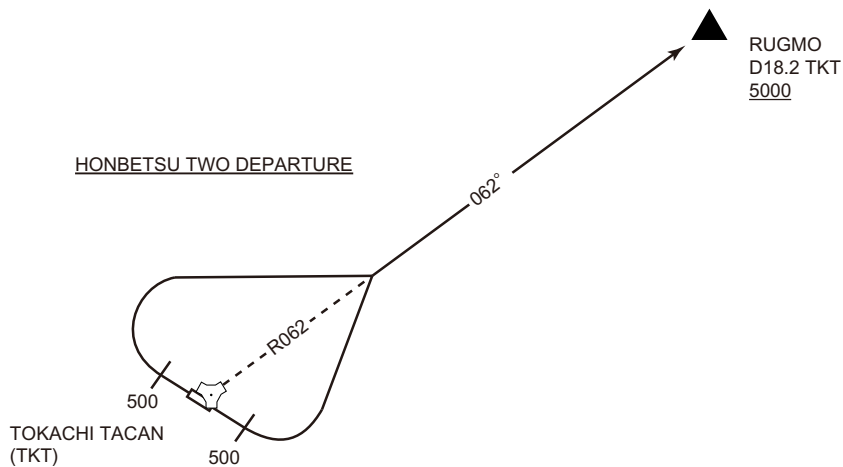
NODUK TRANSITION

From over TKT TACAN, climb via TKT R339 to NODUK.  
 Cross NODUK at or above 6000FT.



HONBETSU TWO DEPARTURE

RWY13 : Climb RWY HDG to 500FT, turn left,...  
 RWY31 : Climb RWY HDG to 500FT, turn right,...  
 ...via TKT R062 to RUGMO.  
 Cross RUGMO at or above 5000FT.  
 Note RWY13 : 5.3% climb gradient required up to 500FT.  
 OBST ALT 340FT located at 0.3NM 157°FM end of RWY13.



**INTENTIONALLY LEFT BLANK**

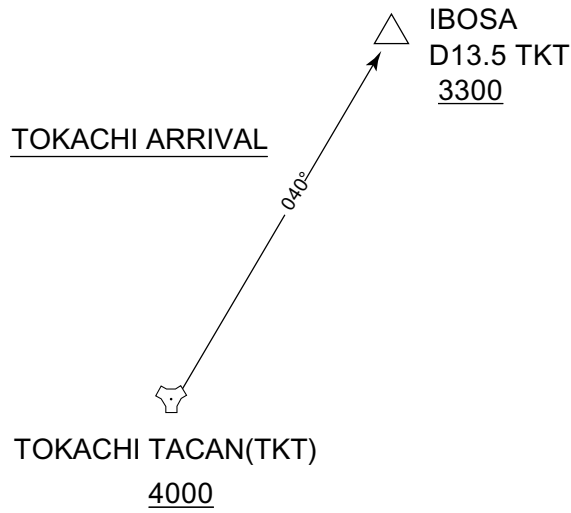
STANDARD ARRIVAL CHART - INSTRUMENT

RJCT / TOKACHI

STAR

TOKACHI ARRIVAL

From over TKT TACAN at or above 4000FT, via TKT R040 to IBOSA.  
Cross IBOSA at or above 3300FT.



CHANGE : IBOSA established. OSABU abolished.

**INTENTIONALLY LEFT BLANK**

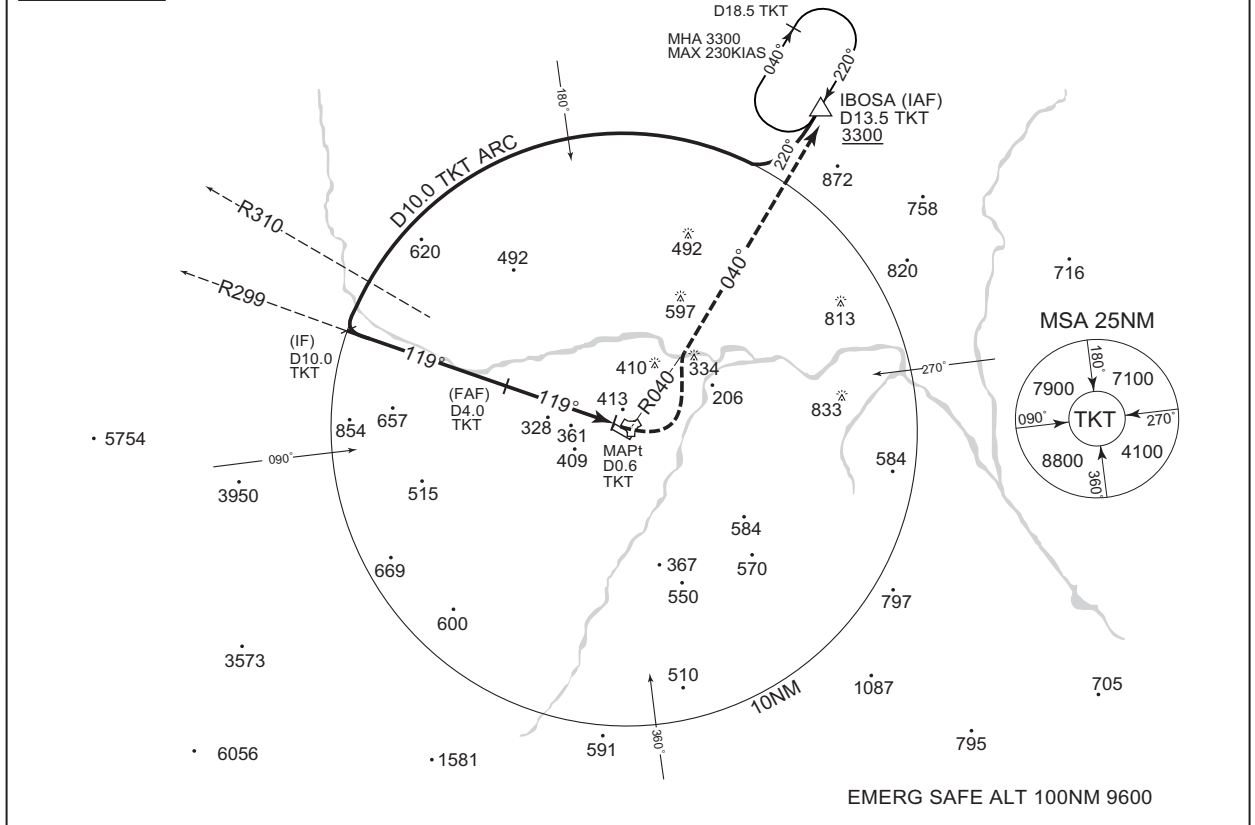
INSTRUMENT APPROACH CHART

RJCT / TOKACHI

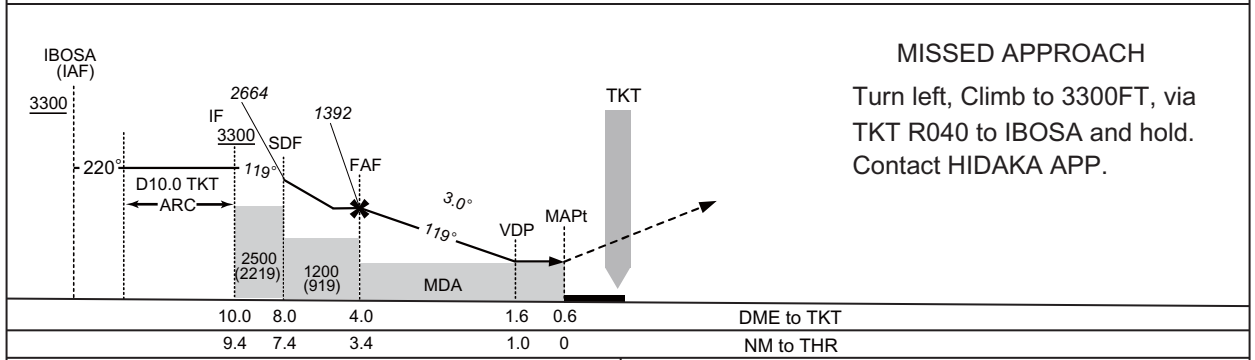
TACAN RWY 13

HIDAKA APP 128.325 — 246.1 — 134.55	TOKACHI TACAN 1016 TKT CH-55X 42°53'36"N/143°09'57"E	TOKACHI TOWER 122.2	GCA AVAILABLE
--	---	------------------------	---------------

VAR 9°W (2016)



CHANGE : ATC call sign and FREQ. Missed APCH PROC.



**MISSED APPROACH**  
Turn left, Climb to 3300FT, via TKT R040 to IBOSA and hold. Contact HIDAKA APP.

MINIMA		THR elev. 281	AD elev. 281	
CAT			CIRCLING	
	MDA(H)	CMV	MDA(H)	VIS
A	640 (359)	1500	720 (439)	1600
B			740 (459)	
C		1800		2400
D	-	-	-	-

**INTENTIONALLY LEFT BLANK**