

INTENTIONALLY LEFT BLANK

STANDARD DEPARTURE CHART - INSTRUMENT

RJCW / WAKKANAI

SID

PANKE TWO DEPARTURE

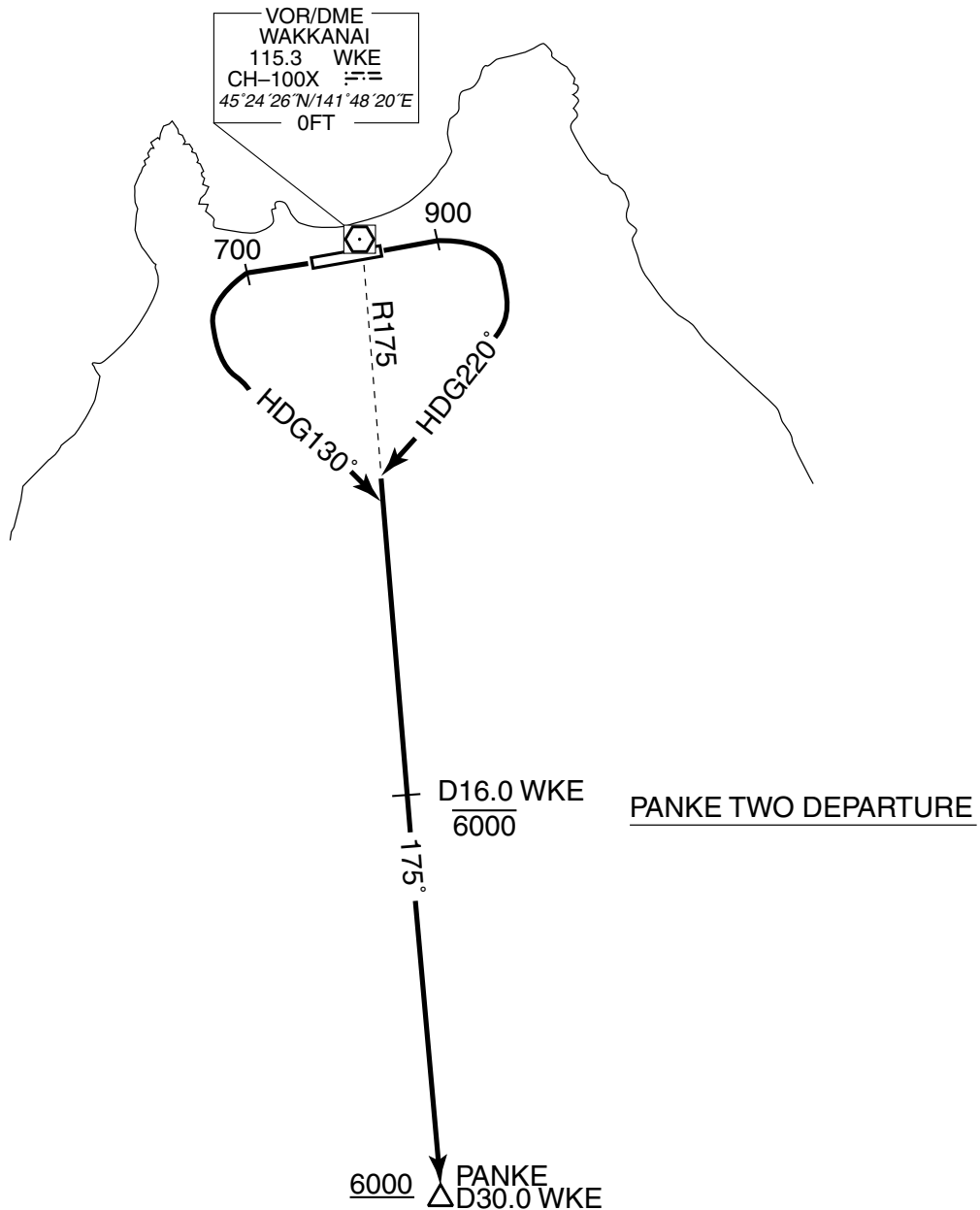
RWY08 : Climb RWY HDG to 900FT, turn right HDG 220° ...

RWY26 : Climb RWY HDG to 700FT, turn left HDG 130° ...
...to intercept and proceed via WKE R175 to PANKE.

Cross WKE R175/16.0DME at or below 6000FT, cross PANKE at or above 6000FT.

NOTE RWY08 : 4.4% climb gradient required up to 900FT.

OBST ALT 591FT located at 2.6NM 096° FM end of RWY08.



STANDARD DEPARTURE CHART - INSTRUMENT

RJCW / WAKKANAI

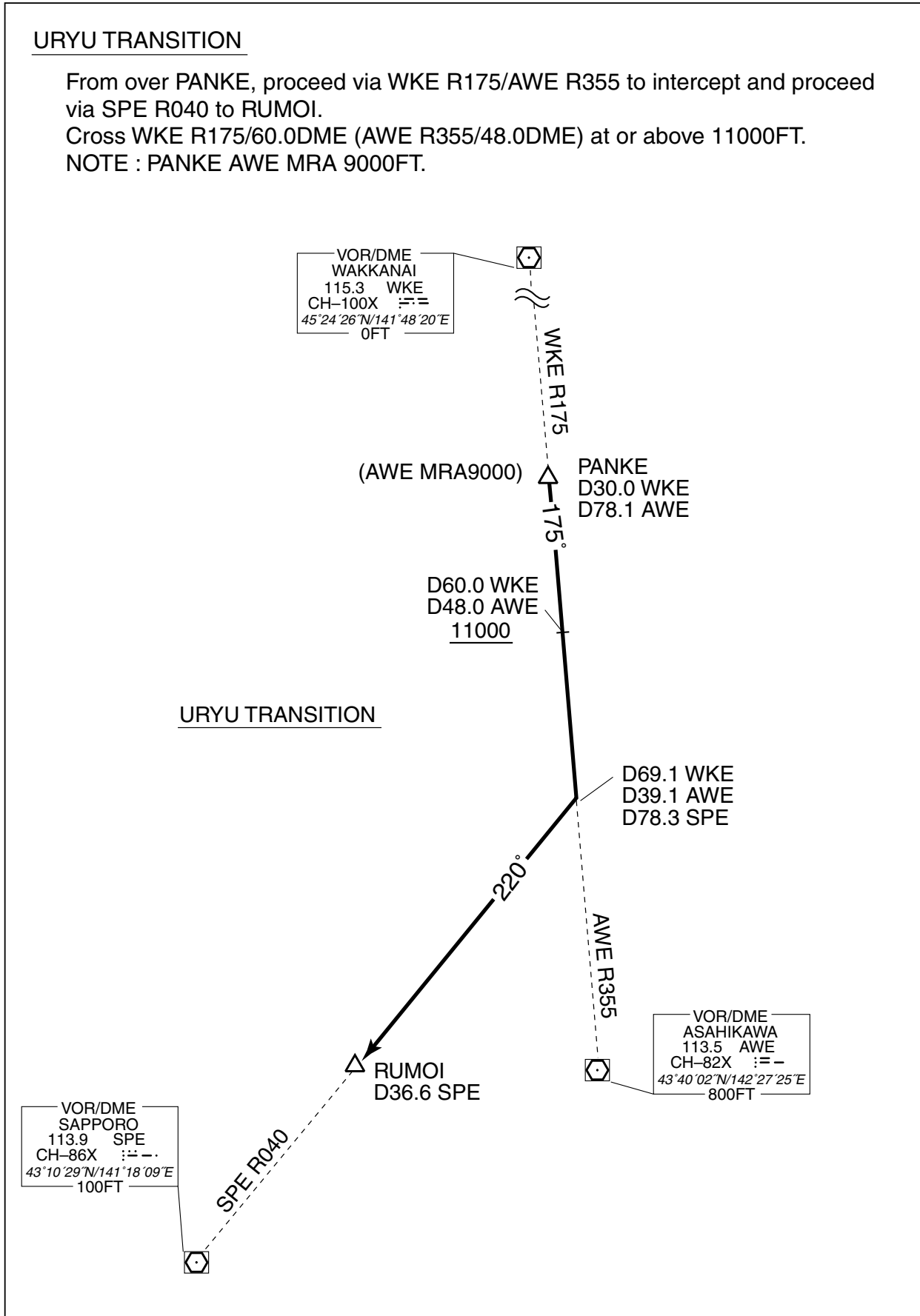
TRANSITION

URYU TRANSITION

From over PANKE, proceed via WKE R175/AWE R355 to intercept and proceed via SPE R040 to RUMOI.

Cross WKE R175/60.0DME (AWE R355/48.0DME) at or above 11000FT.

NOTE : PANKE AWE MRA 9000FT.



STANDARD DEPARTURE CHART - INSTRUMENT

RJCW / WAKKANAI

SID

RUMOI FIVE DEPARTURE

RWY08 : Climb RWY HDG to 900FT, turn right HDG 237° ...

RWY26 : Climb RWY HDG to 700FT, turn left HDG 147° ...

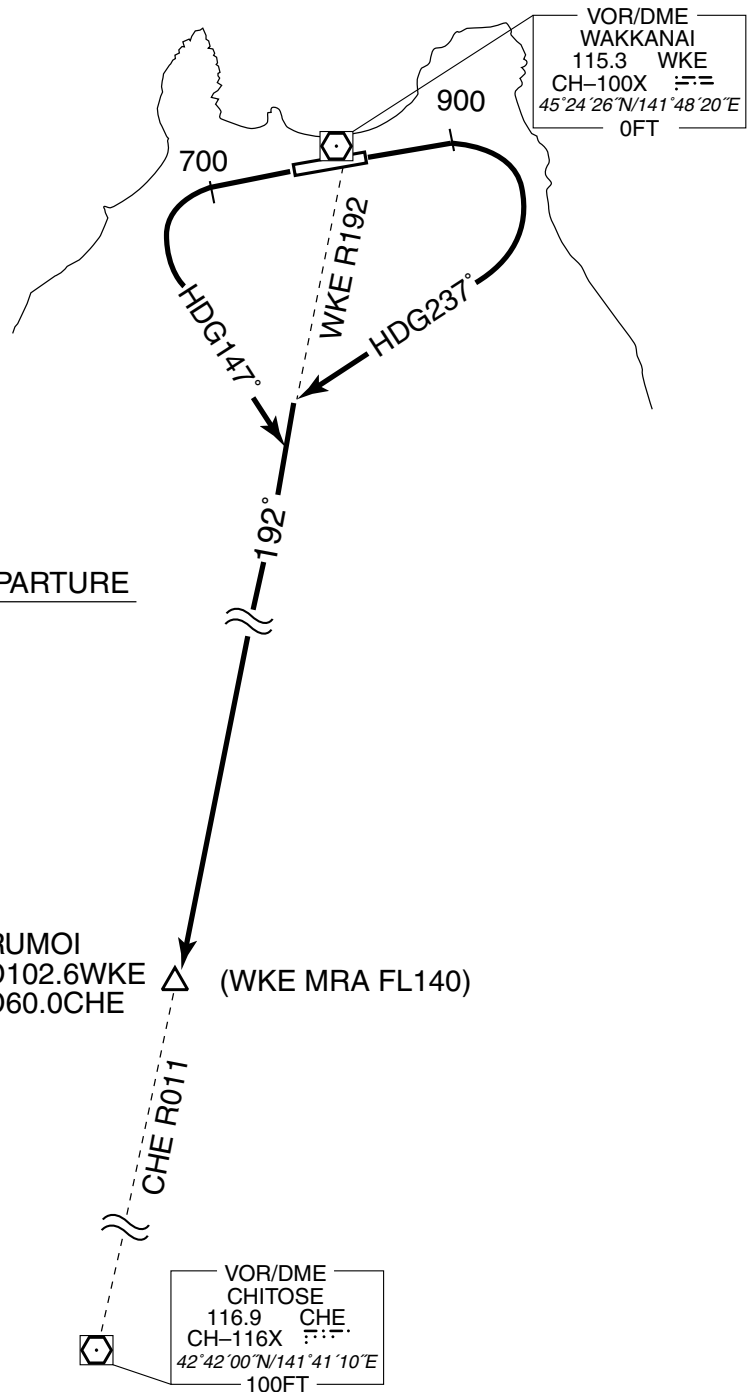
...to intercept and proceed via WKE R192/CHE R011 to RUMOI.

NOTE RWY08 : 4.4% climb gradient required up to 900FT.

OBST ALT 591FT located at 2.6NM 096° FM end of RWY08.

RUMOI WKE MRA FL140.

RUMOI FIVE DEPARTURE



STANDARD DEPARTURE CHART - INSTRUMENT

RJCW / WAKKANAI

SID

WAKKANAI REVERSAL ONE DEPARTURE

RWY08 : Climb RWY HDG to 900FT, turn left HDG302°...

RWY26 : Climb RWY HDG to 700FT, turn right HDG032°...

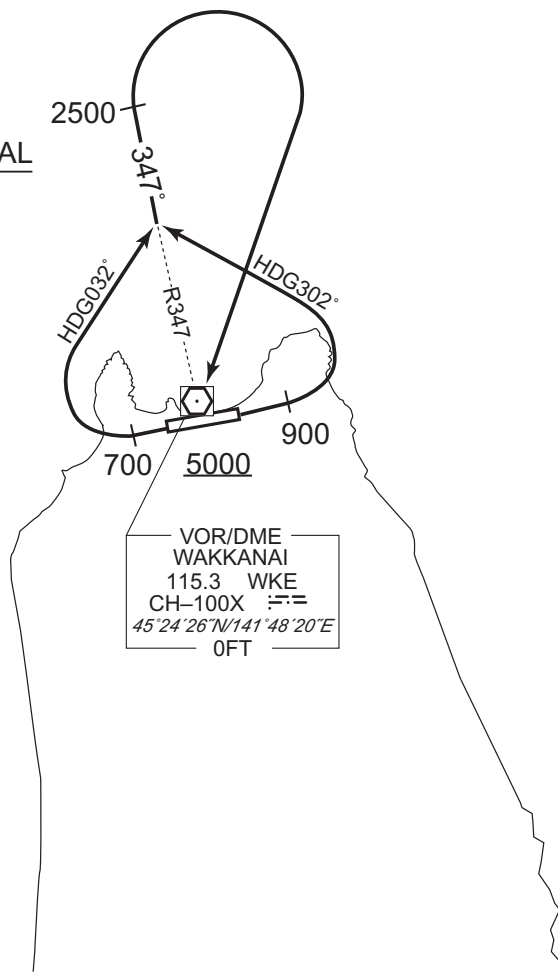
...to intercept and proceed via WKE R347 to 2500FT, turn right direct to WKE VOR/DME.

Cross WKE VOR/DME at or above 5000FT.

NOTE RWY08 : 4.4% climb gradient required up to 900FT.

OBST ALT 591FT located at 2.6NM 096° FM end of RWY08.

WAKKANAI REVERSAL
ONE DEPARTURE



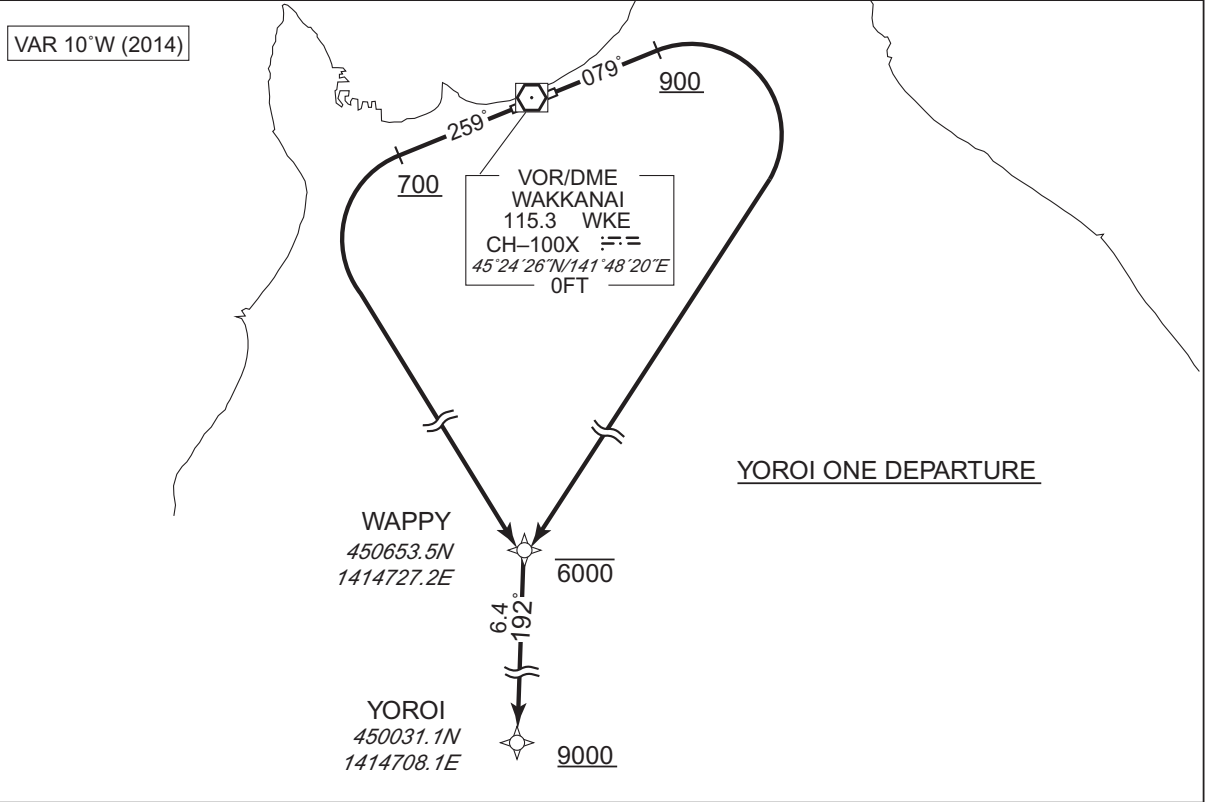
STANDARD DEPARTURE CHART - INSTRUMENT

RJCW / WAKKANAI RNAV SID

YOROI ONE DEPARTURE

RNP1

Note GNSS required.



YOROI ONE DEPARTURE

RWY08 : Climb on HDG079° at or above 900FT, turn right direct to WAPPY at or below 6000FT, to YOROI at or above 9000FT.

RWY26 : Climb on HDG259° at or above 700FT, turn left direct to WAPPY at or below 6000FT, to YOROI at or above 9000FT.

Note RWY08 : 6.0% climb gradient required up to 900FT.
RWY26 : 5.0% climb gradient required up to 700FT.

RWY08

Serial Number	Path Descriptor	Waypoint Identifier	Fly Over	Course [°M(°T)]	Magnetic Variation	Distance (NM)	Turn Direction	Altitude (FT)	Speed (KIAS)	Vertical Angle	Navigation Specification
001	VA	—	—	079 (068.8)	-9.9	—	—	+900	—	—	RNP1
002	DF	WAPPY	—	—	-9.9	—	R	-6000	—	—	RNP1
003	TF	YOROI	—	192 (182.0)	-9.9	6.4	—	+9000	—	—	RNP1

RWY26

Serial Number	Path Descriptor	Waypoint Identifier	Fly Over	Course [°M(°T)]	Magnetic Variation	Distance (NM)	Turn Direction	Altitude (FT)	Speed (KIAS)	Vertical Angle	Navigation Specification
001	VA	—	—	259 (248.9)	-9.9	—	—	+700	—	—	RNP1
002	DF	WAPPY	—	—	-9.9	—	L	-6000	—	—	RNP1
003	TF	YOROI	—	192 (182.0)	-9.9	6.4	—	+9000	—	—	RNP1

CHANGE : Navigation Specification(Basic RNP1 → RNP1).

INTENTIONALLY LEFT BLANK

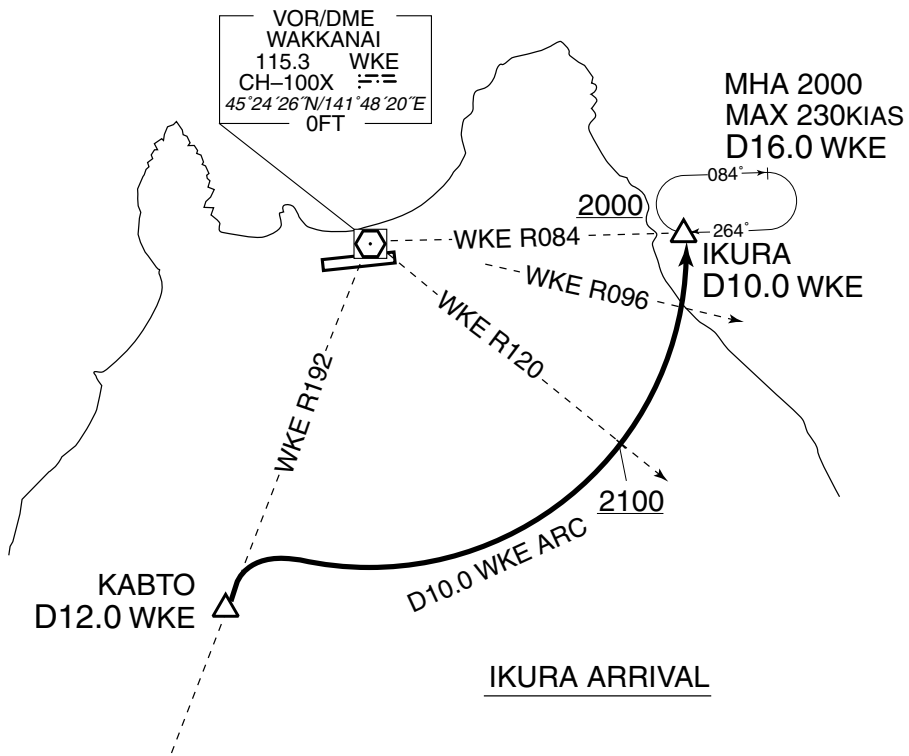
STANDARD ARRIVAL CHART-INSTRUMENT

RJCW / WAKKANAI

STAR

IKURA ARRIVAL

From over KABTO, turn right proceed via WKE 10.0DME counterclockwise ARC to IKURA.
Cross WKE R120 at or above 2100FT, cross IKURA at or above 2000FT.



STANDARD ARRIVAL CHART - INSTRUMENT

RJCW / WAKKANAI

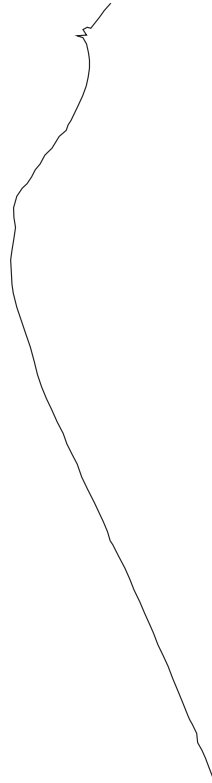
RNAV STAR

DASSY ARRIVAL

RNP1

Note GNSS required.

VAR 10°W (2014)



DASSY
451703.9N
1414757.9E
3000

16.6
012°

DASSY ARRIVAL

YOROI
450031.1N
1414708.1E

DASSY ARRIVAL

From YOROI, to DASSY at or above 3000FT.

CHANGE : Navigation Specification(Basic RNP1 → RNP1).

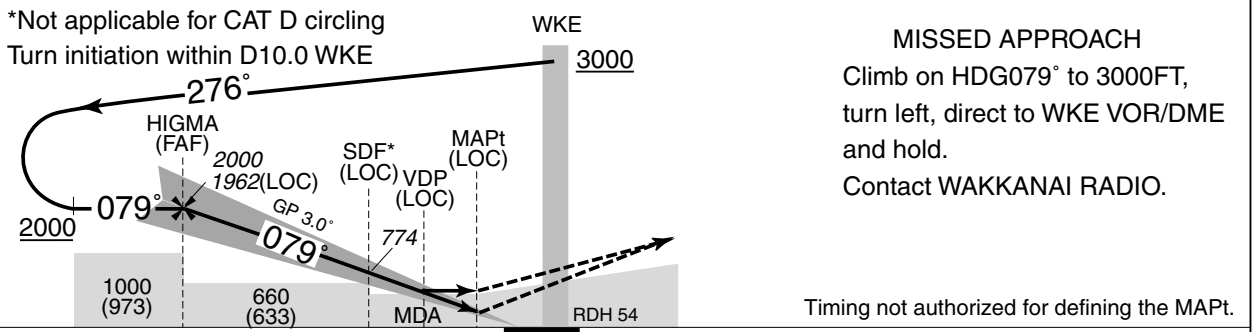
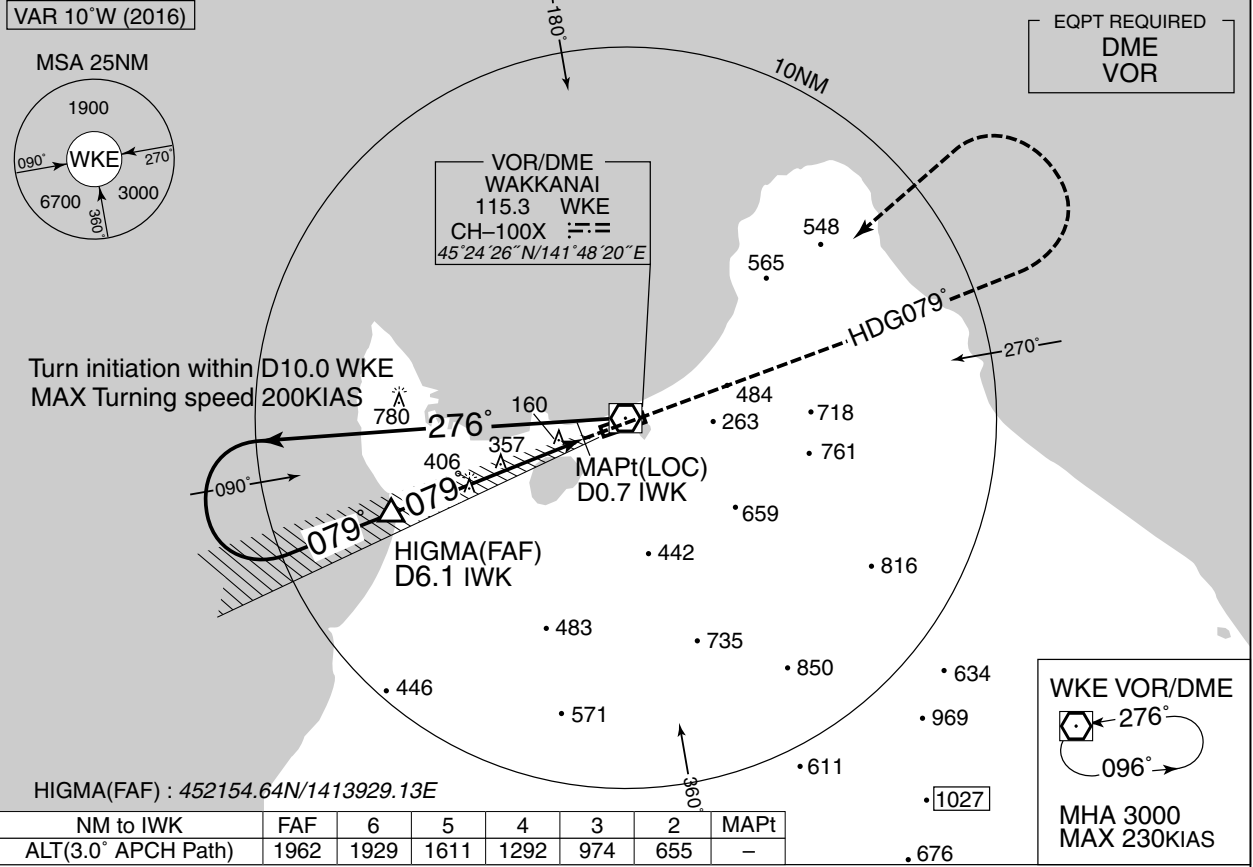
Serial Number	Path Descriptor	Waypoint Identifier	Fly Over	Course °M(°T)	Magnetic Variation	Distance (NM)	Turn Direction	Altitude (FT)	Speed (KIAS)	Vertical Angle	Navigation Specification
001	IF	YOROI	—	—	-9.9	—	—	—	—	—	RNP1
002	TF	DASSY	—	012 (002.0)	-9.9	16.6	—	+3000	—	—	RNP1

INSTRUMENT APPROACH CHART

RJCW / WAKKANAI

ILS or LOC RWY08

SAPPORO CONTROL 132.6 – 255.2 134.25 – 260.4	ILS - LOC 111.1 IWK ILS-GP 331.7 ILS-DME CH-48X	WAKKANAI RADIO 118.3 – 126.2	NO RADAR
--	--	---------------------------------	----------



6.1	2.4	1.6	0.7	0.2	DME to IWK
5.9	2.2	1.5	0.5	0	NM to THR

Missed APCH climb gradient MNM 3.0%

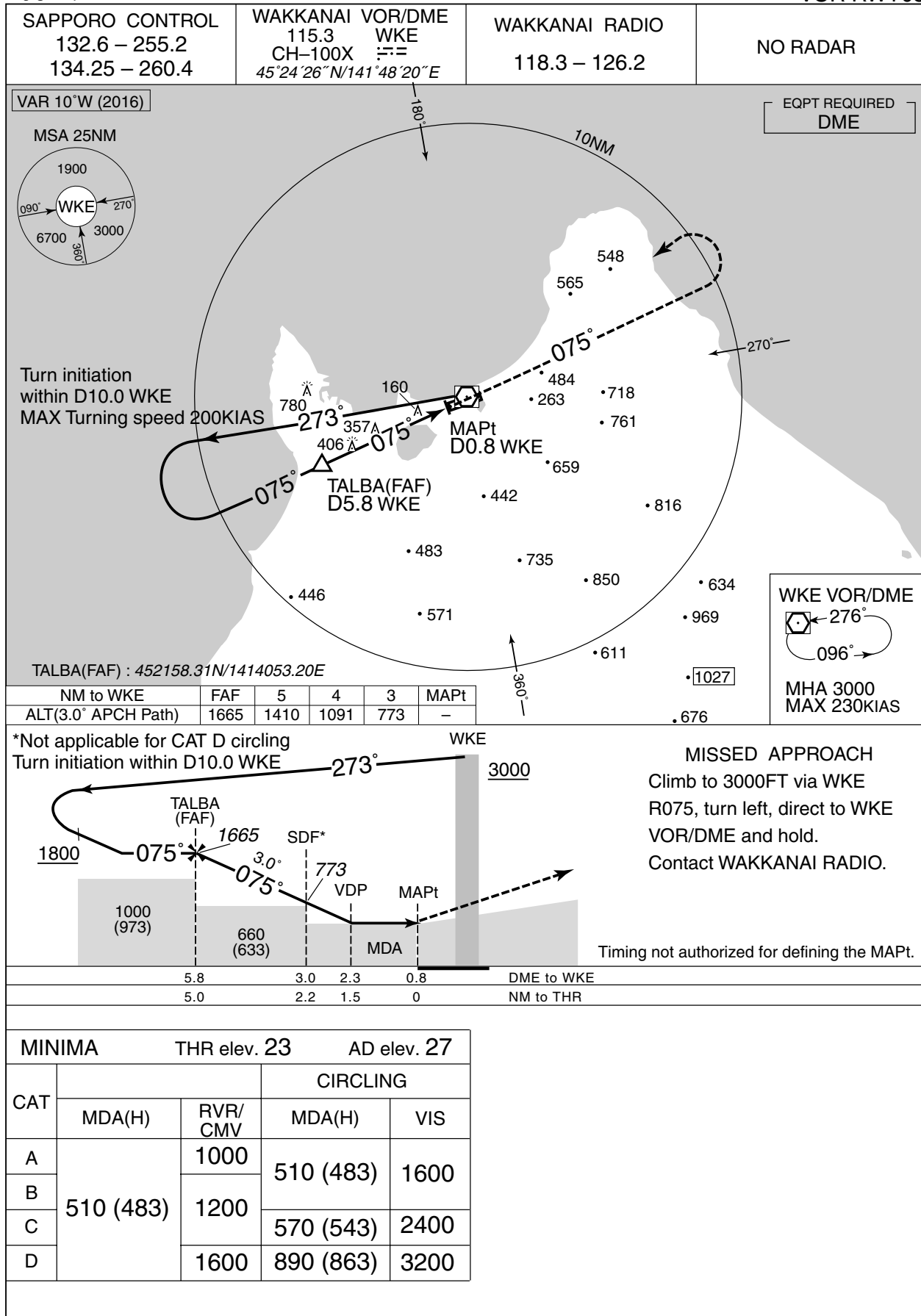
MINIMA		THR elev. 23		AD elev. 27		
CAT	CAT I		LOC		CIRCLING	
	DA(H)	RVR/CMV	MDA(H)	RVR/CMV	MDA(H)	VIS
A	223 (200)	550	510 (483)	1000	510 (483)	1600
B				1200		
C				1600	570 (543)	2400
D				1600	890 (863)	3200

MINIMA with Missed APCH climb gradient of 2.5% are not established.

INSTRUMENT APPROACH CHART

RJCW / WAKKANAI

VOR RWY08

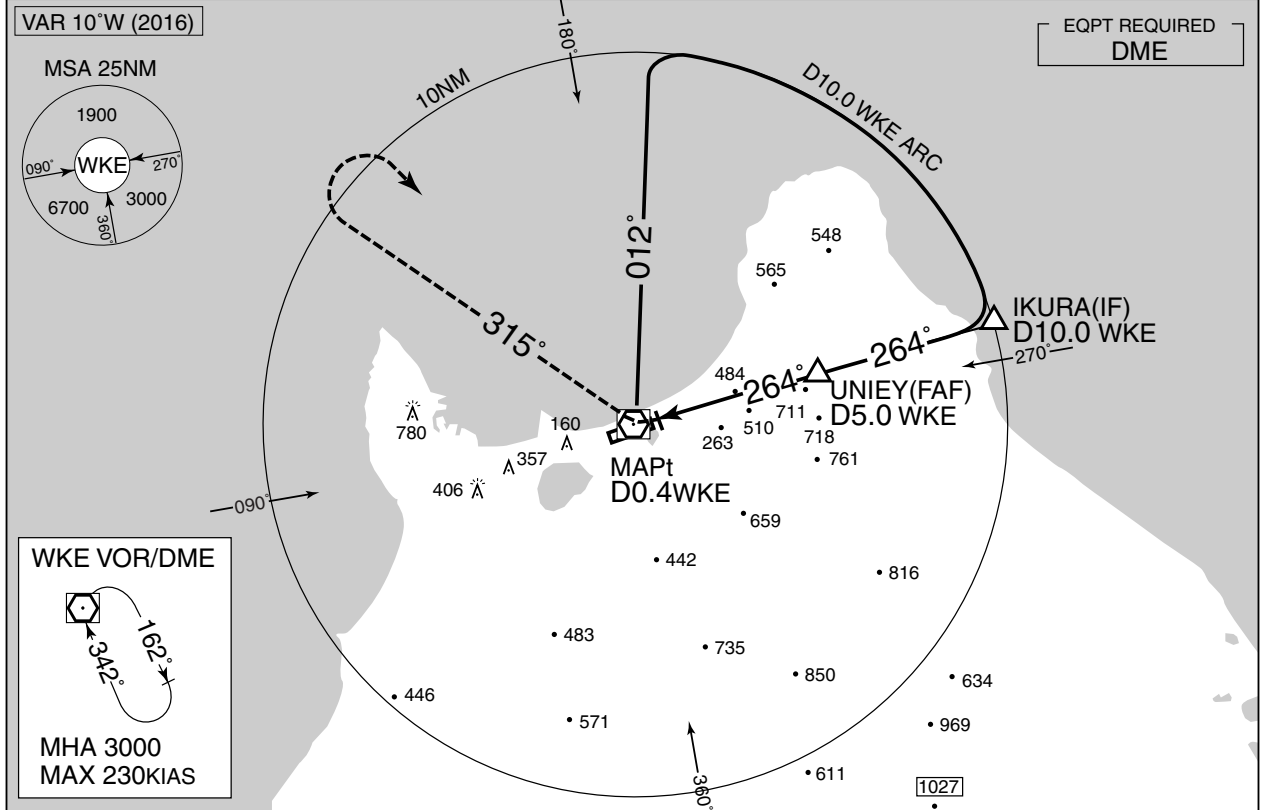


INSTRUMENT APPROACH CHART

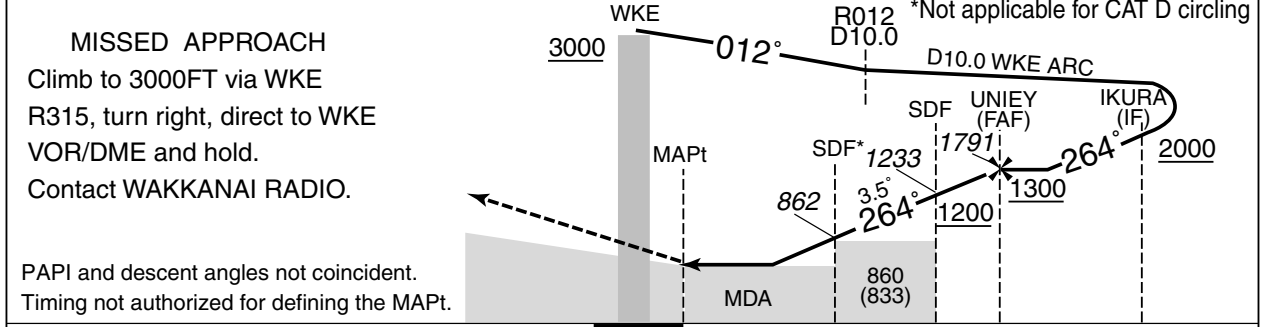
RJCW / WAKKANAI

VOR RWY26

SAPPORO CONTROL 132.6 – 255.2 134.25 – 260.4	WAKKANAI VOR/DME 115.3 WKE CH-100X 45°24'26"N/141°48'20"E	WAKKANAI RADIO 118.3 – 126.2	NO RADAR
--	--	---------------------------------	----------



NM to WKE	MAPt	2	3	4	FAF
ALT(3.5° APCH Path)	-	676	1047	1419	1791



DME to WKE	0.4	2.5	3.5	5.0	10.0
NM to THR	0	2.1	3.2	4.6	9.6

MINIMA		THR elev. 31		AD elev. 27	
CAT			CIRCLING		
	MDA(H)	CMV	MDA(H)	VIS	
A	490 (463)	1400	490 (463)	1600	
B		1500	500 (473)		
C		1600	570 (543)		
D		1800	890 (863)		

INSTRUMENT APPROACH CHART

RJCW / WAKKANAI

VOR A

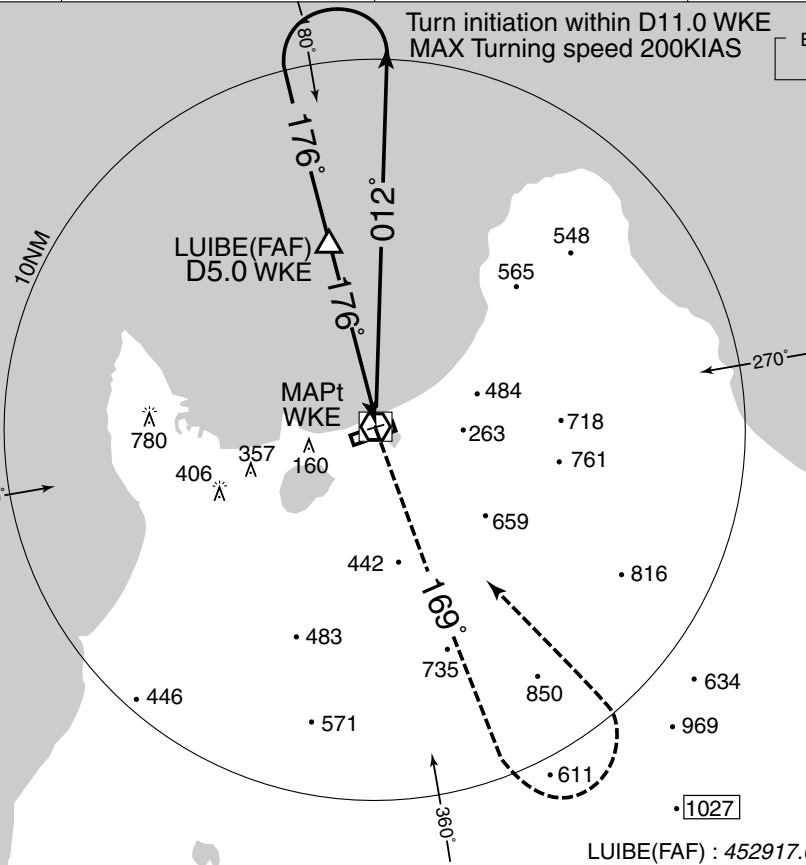
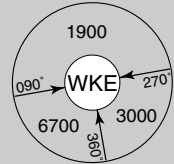
SAPPORO CONTROL 132.6 – 255.2 134.25 – 260.4	WAKKANAI VOR/DME 115.3 WKE CH-100X 45°24'26"N/141°48'20"E	WAKKANAI RADIO 118.3–126.2	NO RADAR
--	--	-------------------------------	----------

VAR 10°W (2016)

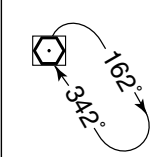
Turn initiation within D11.0 WKE
MAX Turning speed 200KIAS

EQPT REQUIRED
DME

MSA 25NM



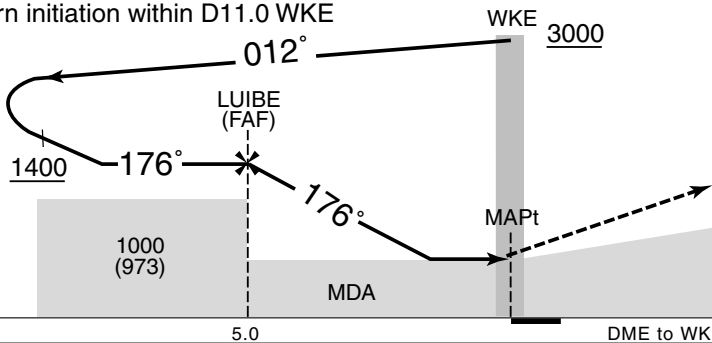
WKE VOR/DME



MHA 3000
MAX 230KIAS

LUIBE(FAF) : 452917.04N/1414633.91E

Turn initiation within D11.0 WKE



MISSED APPROACH
Climb to 3000FT via WKE
R169, turn left, direct to WKE
VOR/DME and hold.
Contact WAKKANAI RADIO.

Timing not authorized for defining the MAPt.

Missed APCH climb gradient MNM 3.0%

MINIMA		AD elev. 27
CAT	CIRCLING	
	MDA(H)	VIS
A	460 (433)	1600
B	500 (473)	
C	570 (543)	2400
D	890 (863)	3200

MINIMA with Missed APCH climb gradient of 2.5% are not established.

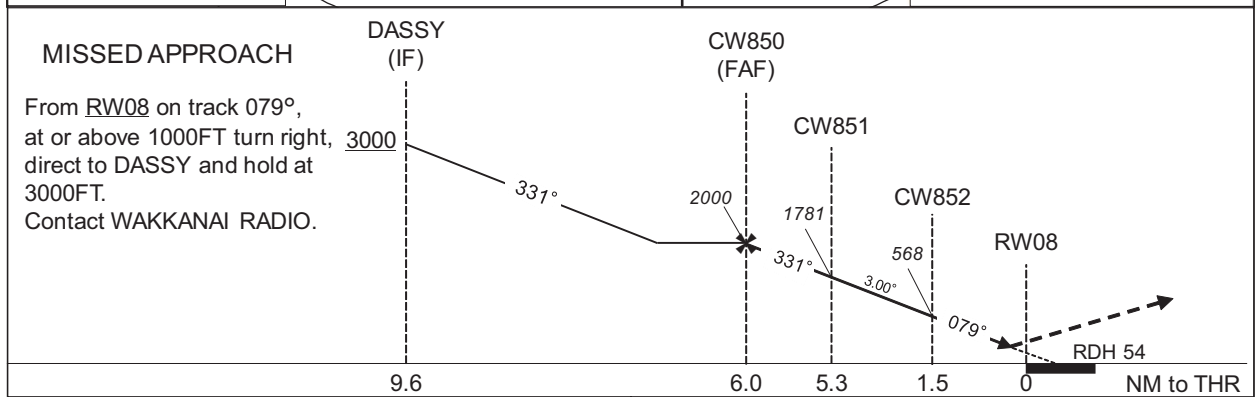
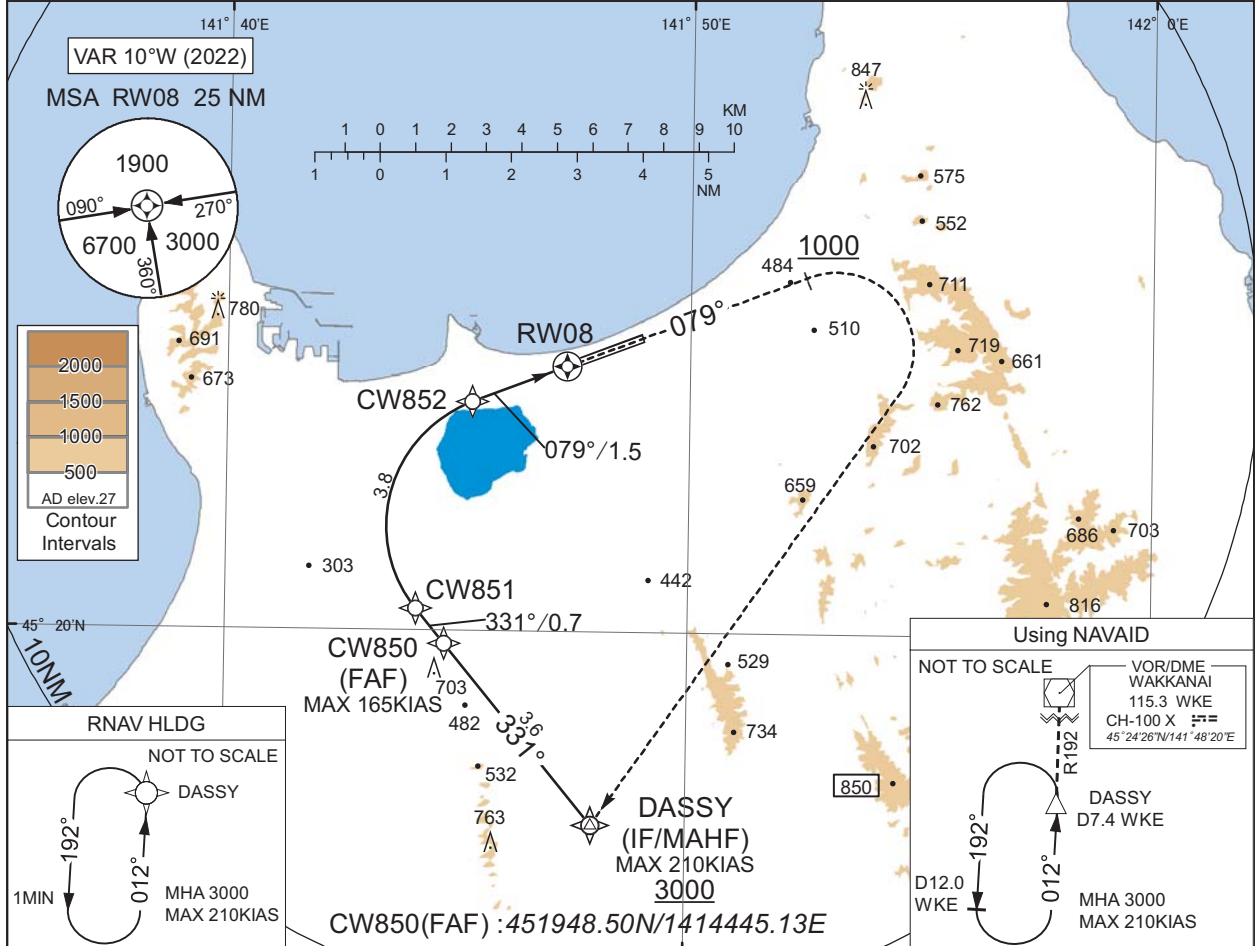
INSTRUMENT APPROACH CHART

RJCW / WAKKANAI

RNP RWY08(AR)

SAPPORO CONTROL 132.6 - 255.2 134.25 - 260.4	RNP AR RF required.	WAKKANAI RADIO 118.3 - 126.2	NO RADAR
--	------------------------	---------------------------------	----------

For uncompensated Baro-VNAV systems, procedure not authorized below -25°C / above 45°C



Missed APCH climb gradient MNM 5.0%

CAT	RNP 0.30	
	DA(H)	RVR/CMV
A	-	-
B	-	-
C	323(300)	1000
D	323(300)	1400

Authorization Required

MINIMA with Missed APCH climb gradient of 2.5% are not established.

CHANGE : PROC renamed. Requirement for RNP.

INSTRUMENT APPROACH CHART

RJCW / WAKKANAI

RNP RWY08(AR)

Coding Table

Serial Number	Path Descriptor	Waypoint Identifier	Fly Over	Course °M(°T)	Magnetic Variation	Distance (NM)	Turn Direction	Altitude (FT)	Speed (KIAS)	VPA/ RDH (°/FT)	RNP Value
001	IF	DASSY	-	-	-10.5	-	-	+3000	-210	-	-
002	TF	CW850	-	331 (320.5)	-10.5	3.6	-	2000	-165	-	1.0
003	TF	CW851	-	331 (320.5)	-10.5	0.7	-	1781	-	-3.00	0.3
004	RF Center: CWRF1 r=2.01NM	CW852	-	-	-10.5	3.8	R	568	-	-3.00	0.3
005	TF	RW08	Y	079 (068.8)	-10.5	1.5	-	77	-	-3.00/54	0.3
006	FA	-	-	079 (068.8)	-10.5	-	-	+1000	-	-	1.0
007	DF	DASSY	-	-	-10.5	-	R	3000	-	-	1.0

Path	Waypoint Identifier	Inbound Course °M(°T)	Magnetic Variation	Outbound Time (MIN)	Turn Direction	Minimum Altitude (FT)	Maximum Altitude (FT)	Speed (KIAS)	RNP Value
Hold	DASSY	012 (002.0)	-10.5	1.0 (-14000)	L	3000	FL140	-210 (-14000)	1.0

Waypoint Coordinates

Waypoint Identifier	Coordinates	RF Arc Center Identifier	Coordinates
CW850	451948.50N / 1414445.13E	CWRF1	452137.25N / 1414619.72E
CW851	452020.32N / 1414407.80E		
CW852	452329.85N / 1414518.02E		
RW08	452403.14N / 1414720.43E		
DASSY	451703.92N / 1414757.93E		

CHANGE : PROC renamed.

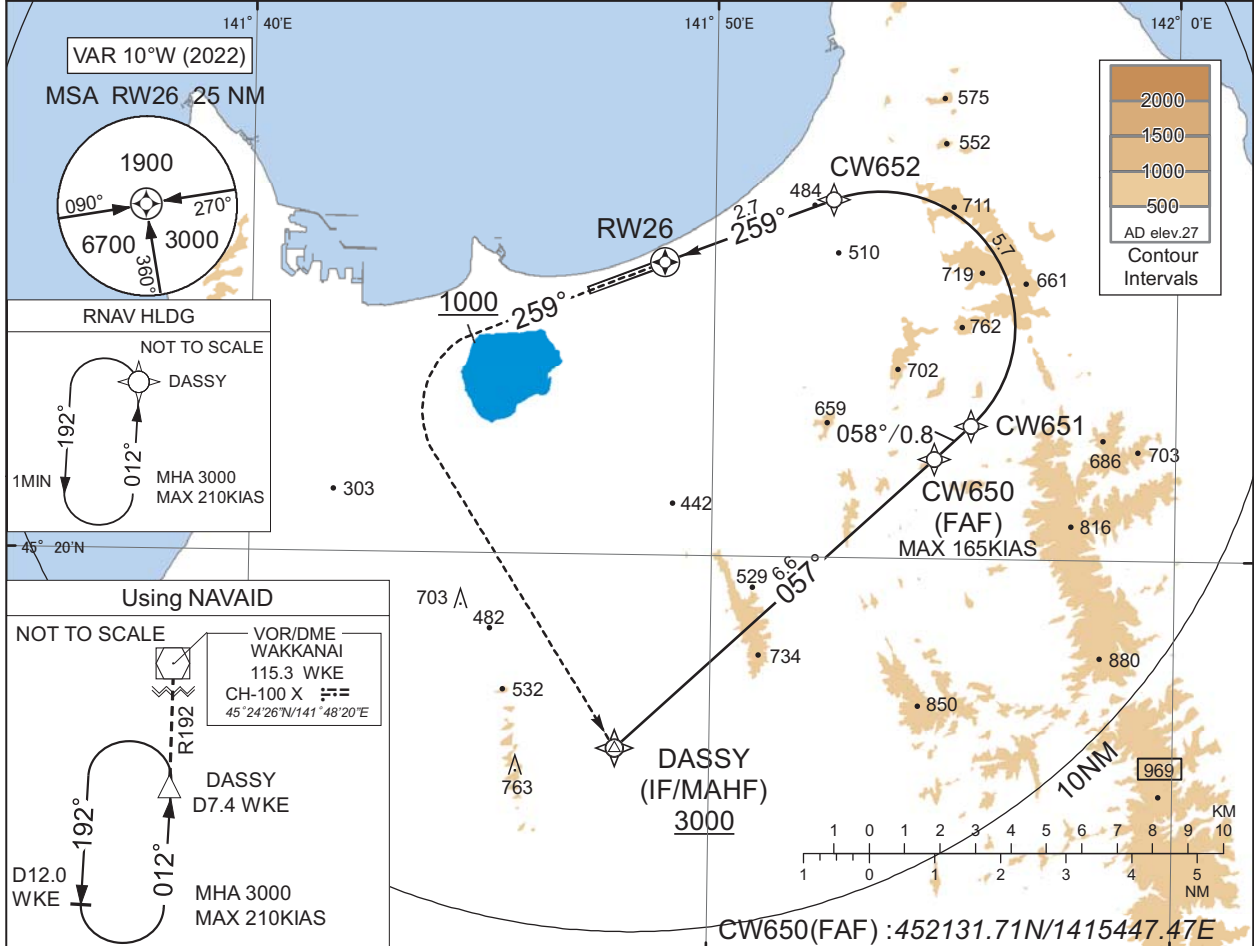
INSTRUMENT APPROACH CHART

RJCW / WAKKANAI

RNP RWY26(AR)

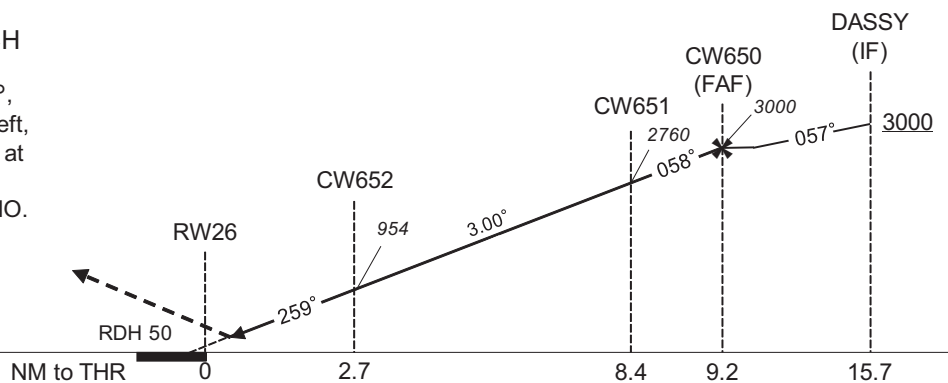
SAPPORO CONTROL 132.6 - 255.2 134.25 - 260.4	RNP AR RF required.	WAKKANAI RADIO 118.3 - 126.2	NO RADAR
--	------------------------	---------------------------------	----------

For uncompensated Baro-VNAV systems, procedure not authorized below -25°C / above 45°C



MISSED APPROACH

From RW26 on track 259°, at or above 1000FT turn left, direct to DASSY and hold at 3000FT. Contact WAKKANAI RADIO.



Missed APCH climb gradient MNM 5.0%

CAT	RNP 0.30	
	DA(H)	CMV
A	-	-
B	-	-
C	331(300)	1400
D	331(300)	1600

MINIMA with Missed APCH climb gradient of 2.5% are not established.

Authorization Required

CHANGE : PROC renamed. Requirement for RNP.

INSTRUMENT APPROACH CHART

RJCW / WAKKANAI

RNP RWY26(AR)

Coding Table

Serial Number	Path Descriptor	Waypoint Identifier	Fly Over	Course °M(°T)	Magnetic Variation	Distance (NM)	Turn Direction	Altitude (FT)	Speed (KIAS)	VPA/ RDH (°/FT)	RNP Value
001	IF	DASSY	-	-	-10.5	-	-	+3000	-	-	-
002	TF	CW650	-	057 (047.0)	-10.5	6.6	-	3000	-165	-	1.0
003	TF	CW651	-	058 (047.1)	-10.5	0.8	-	2760	-	-3.00	0.3
004	RF Center: CWRF2 r=2.05NM	CW652	-	-	-10.5	5.7	L	954	-	-3.00	0.3
005	TF	RW26	Y	259 (248.9)	-10.5	2.7	-	81	-	-3.00/50	0.3
006	FA	-	-	259 (248.9)	-10.5	-	-	+1000	-	-	1.0
007	DF	DASSY	-	-	-10.5	-	L	3000	-	-	1.0

Path	Waypoint Identifier	Inbound Course °M(°T)	Magnetic Variation	Outbound Time (MIN)	Turn Direction	Minimum Altitude (FT)	Maximum Altitude (FT)	Speed (KIAS)	RNP Value
Hold	DASSY	012 (002.0)	-10.5	1.0 (-14000)	L	3000	FL140	-210 (-14000)	1.0

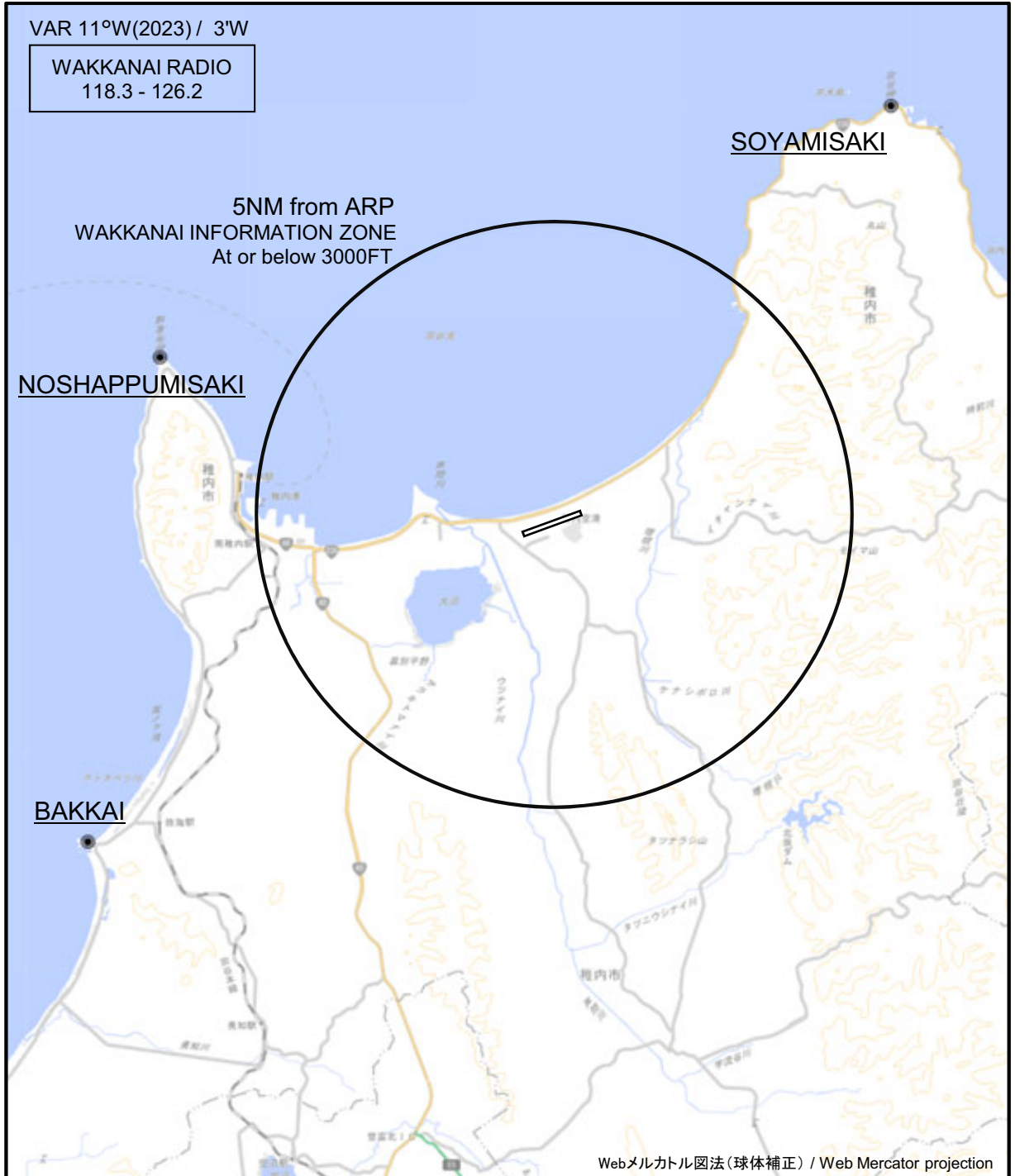
Waypoint Coordinates

Waypoint Identifier	Coordinates	RF Arc Center Identifier	Coordinates
CW650	452131.71N / 1415447.47E	CWRF2	452332.87N / 1415335.73E
CW651	452202.42N / 1415534.54E		
CW652	452527.92N / 1415232.94E		
RW26	452428.77N / 1414854.78E		
DASSY	451703.92N / 1414757.93E		

CHANGE : PROC renamed.

RJCW / WAKKANAI

Visual REP



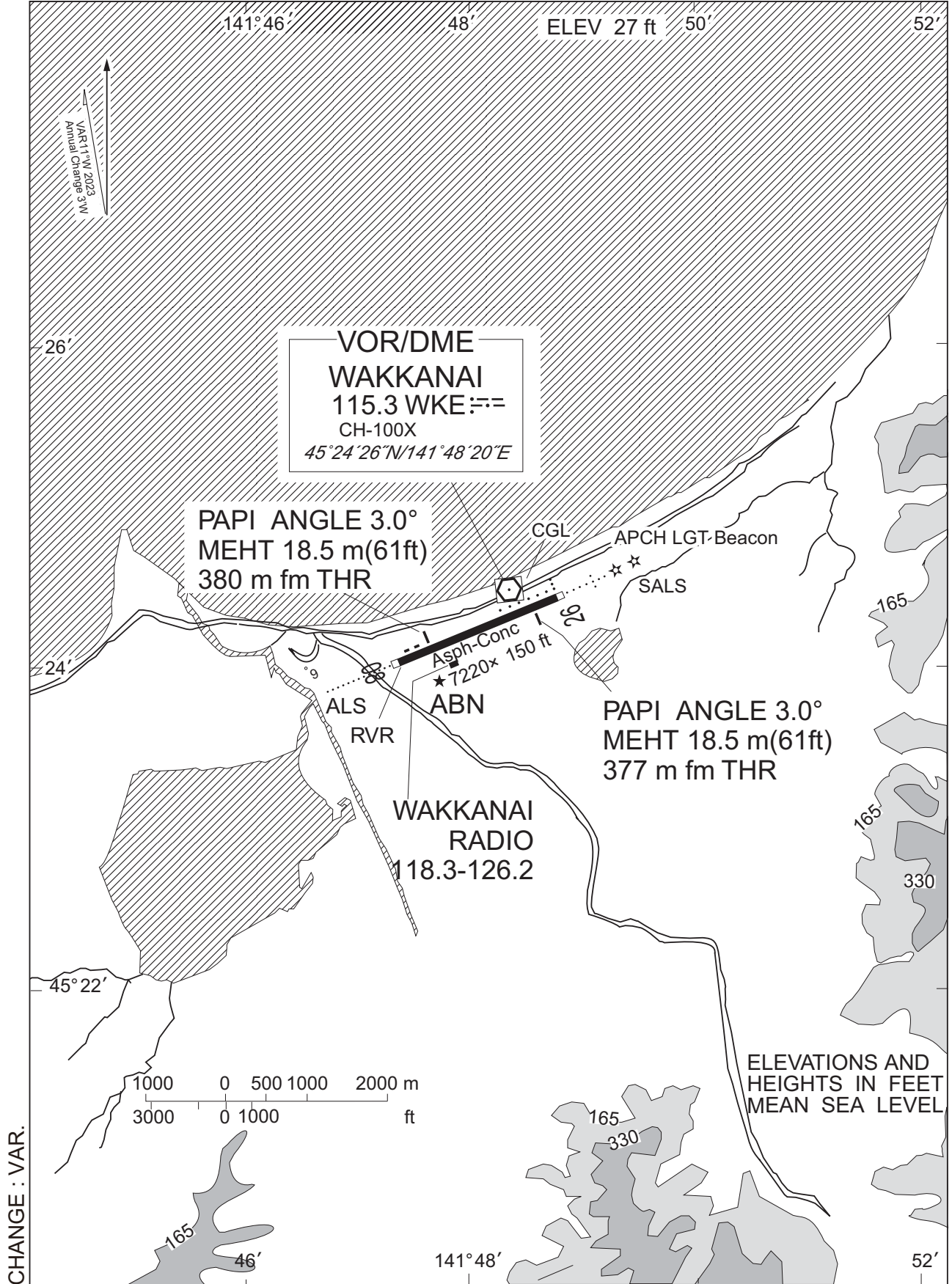
※図中に標高を示す数字がある場合、単位はメートル(m)である。The unit of measurement used to express elevation is meter(m).

CHANGE : VAR.

Call sign	BRG / DIST from ARP	Remarks
宗谷岬 Soyamisaki	039°T / 9.0NM	灯台 Lighthouse
野寒布岬 Noshappumisaki	292°T / 7.2NM	灯台 Lighthouse
抜海 Bakkai	234°T / 9.7NM	岬 Cape

RJCW / WAKKANAI

LDG CHART



Remarks : Interference by foreign broadcast exists on 126.2

RJCW / WAKKANAI

Minimum Vectoring Altitude CHART

CHANGE : Description of VAR.

