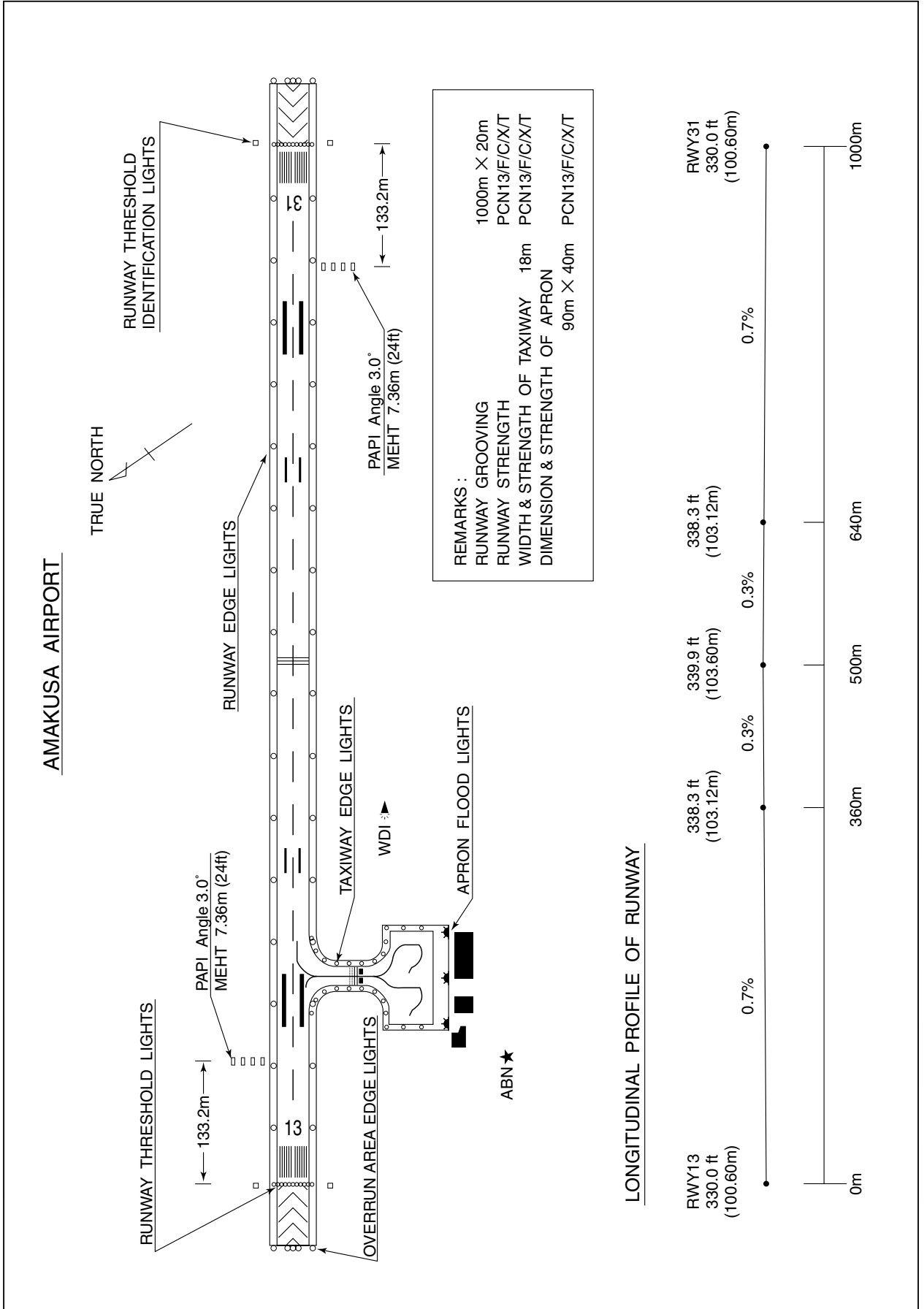


RJDA / AMAKUSA

AD CHART



STANDARD DEPARTURE CHART - INSTRUMENT

RJDA / AMAKUSA

SID

AMAKUSA REVERSAL THREE DEPARTURE

RWY13 : Climb RWY HDG to 800FT, turn left HDG051°...

RWY31 : Climb on HDG322° to 1100FT, turn right HDG141°...

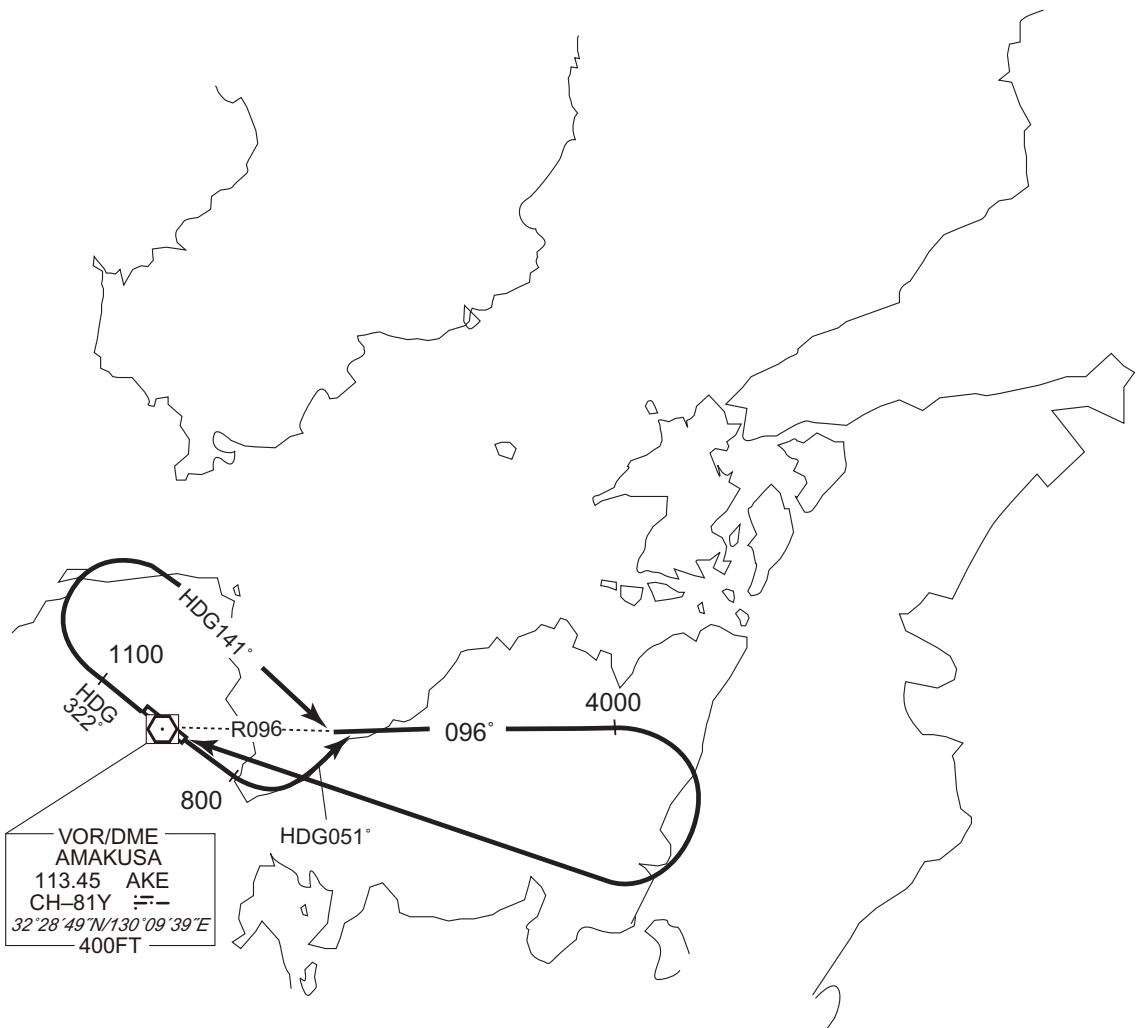
... to intercept and proceed via AKE R096 to 4000FT, turn right, direct to AKE VOR/DME.

Note RWY13 : 5.0% climb gradient required up to 1200FT.

OBST ALT 1994FT located at 9.0NM 098° FM end of RWY13.

RWY31 : 6.0% climb gradient required up to 1100FT.

OBST ALT 591FT located at 0.8NM 294° FM end of RWY31.



CHANGE : Description of PROC name.

STANDARD DEPARTURE CHART - INSTRUMENT

RJDA / AMAKUSA

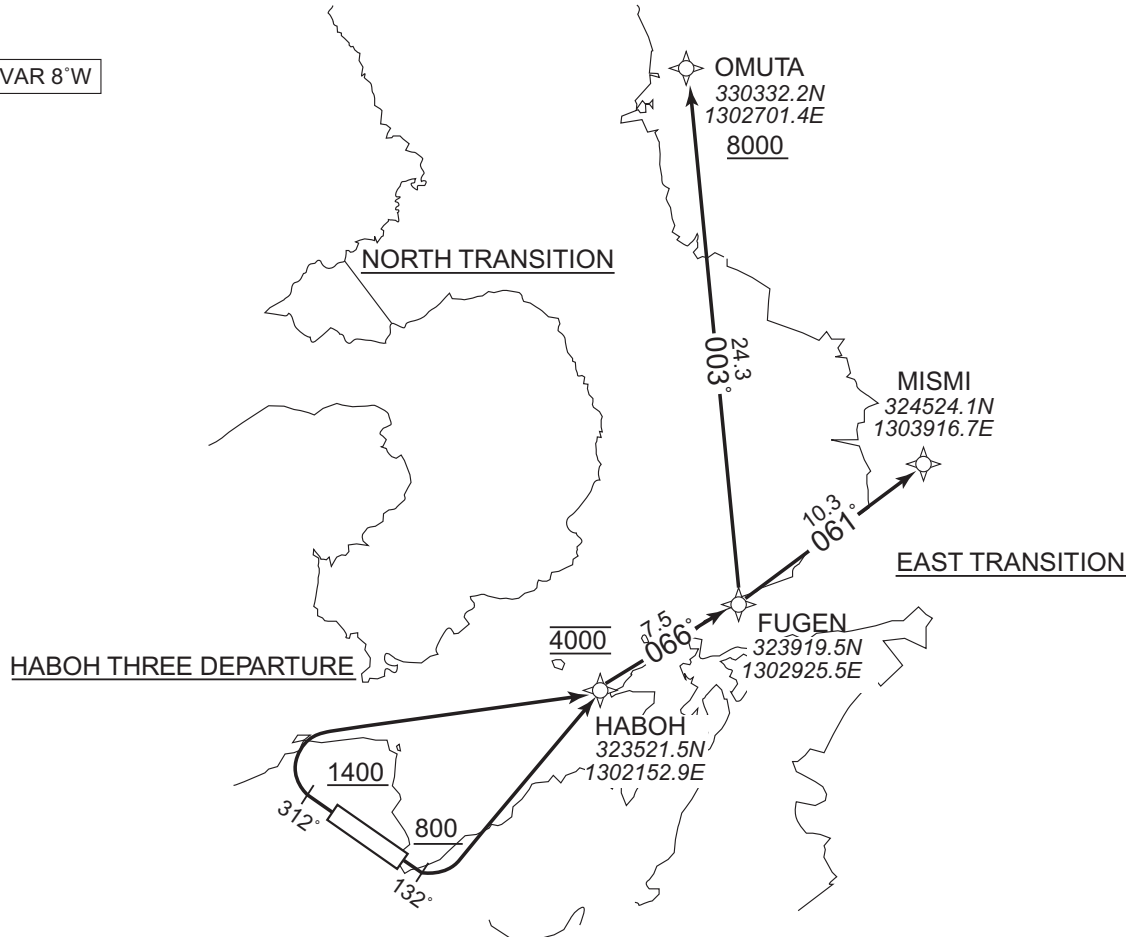
RNAV SID and TRANSITION

HABOH THREE DEPARTURE
NORTH TRANSITION
EAST TRANSITION

RNP1

Note GNSS required.

VAR 8°W



HABOH THREE DEPARTURE

- RWY13 : Climb on HDG132° at or above 800FT, turn left direct to HABOH at 4000FT, to FUGEN.
- RWY31 : Climb on HDG312° at or above 1400FT, turn right direct to HABOH at 4000FT, to FUGEN.
- Note RWY13 : 3.5% climb gradient required up to 800FT.
OBST ALT 919FT located at 4.2NM 126° FM end of RWY13.
- RWY31 : 6.1% climb gradient required up to 1400FT.
OBST ALT 591FT located at 0.8NM 293° FM end of RWY31.

NORTH TRANSITION

From FUGEN, to Omuta at or above 8000FT.

EAST TRANSITION

From FUGEN, to MISMI.

CHANGE : Course FM HABOH to FUGEN. PROC renamed(HABOH THREE DEPARTURE). VAR.

STANDARD DEPARTURE CHART - INSTRUMENT

RJDA / AMAKUSA

RNAV SID and TRANSITION

HABOH THREE DEPARTURE

RWY13

Serial Number	Path Descriptor	Waypoint Identifier	Fly Over	Course °M(°T)	Magnetic Variation	Distance (NM)	Turn Direction	Altitude (FT)	Speed (KIAS)	Vertical Angle	Navigation Specification
001	VA	-	-	132 (124.7)	-7.7	-	-	+800	-	-	RNP1
002	DF	HABOH	-	-	-7.7	-	L	4000	-	-	RNP1
003	TF	FUGEN	-	066 (058.0)	-7.7	7.5	-	-	-	-	RNP1

RWY31

Serial Number	Path Descriptor	Waypoint Identifier	Fly Over	Course °M(°T)	Magnetic Variation	Distance (NM)	Turn Direction	Altitude (FT)	Speed (KIAS)	Vertical Angle	Navigation Specification
001	VA	-	-	312 (304.7)	-7.7	-	-	+1400	-	-	RNP1
002	DF	HABOH	-	-	-7.7	-	R	4000	-	-	RNP1
003	TF	FUGEN	-	066 (058.0)	-7.7	7.5	-	-	-	-	RNP1

NORTH TRANSITION

Serial Number	Path Descriptor	Waypoint Identifier	Fly Over	Course °M(°T)	Magnetic Variation	Distance (NM)	Turn Direction	Altitude (FT)	Speed (KIAS)	Vertical Angle	Navigation Specification
001	IF	FUGEN	-	-	-7.7	-	-	-	-	-	RNP1
002	TF	OMUTA	-	003 (355.2)	-7.7	24.3	-	+8000	-	-	RNP1

EAST TRANSITION

Serial Number	Path Descriptor	Waypoint Identifier	Fly Over	Course °M(°T)	Magnetic Variation	Distance (NM)	Turn Direction	Altitude (FT)	Speed (KIAS)	Vertical Angle	Navigation Specification
001	IF	FUGEN	-	-	-7.7	-	-	-	-	-	RNP1
002	TF	MISMI	-	061 (053.7)	-7.7	10.3	-	-	-	-	RNP1

CHANGE : Course FM HABOH to FUGEN. PROC renamed(HABOH THREE DEPARTURE). VAR.

STANDARD ARRIVAL CHART - INSTRUMENT

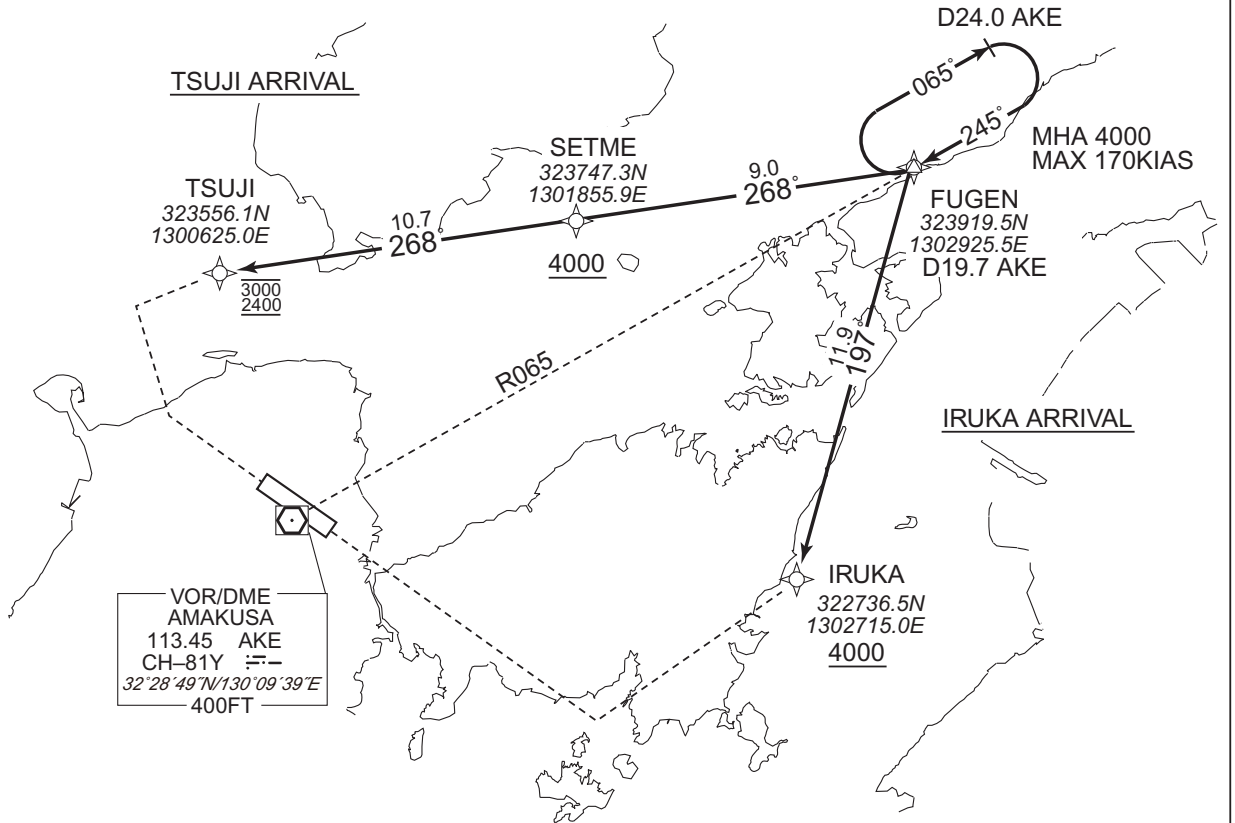
RJDA / AMAKUSA

RNAV STAR

IRUKA ARRIVAL TSUJI ARRIVAL	RNP1
--------------------------------	------

Note GNSS required.

VAR 8°W



IRUKA ARRIVAL

From FUGEN, to IRUKA at or above 4000FT.

Serial Number	Path Descriptor	Waypoint Identifier	Fly Over	Course °M(°T)	Magnetic Variation	Distance (NM)	Turn Direction	Altitude (FT)	Speed (KIAS)	Vertical Angle	Navigation Specification
001	IF	FUGEN	-	-	-7.7	-	-	-	-	-	RNP1
002	TF	IRUKA	-	197 (188.9)	-7.7	11.9	-	+4000	-	-	RNP1

TSUJI ARRIVAL

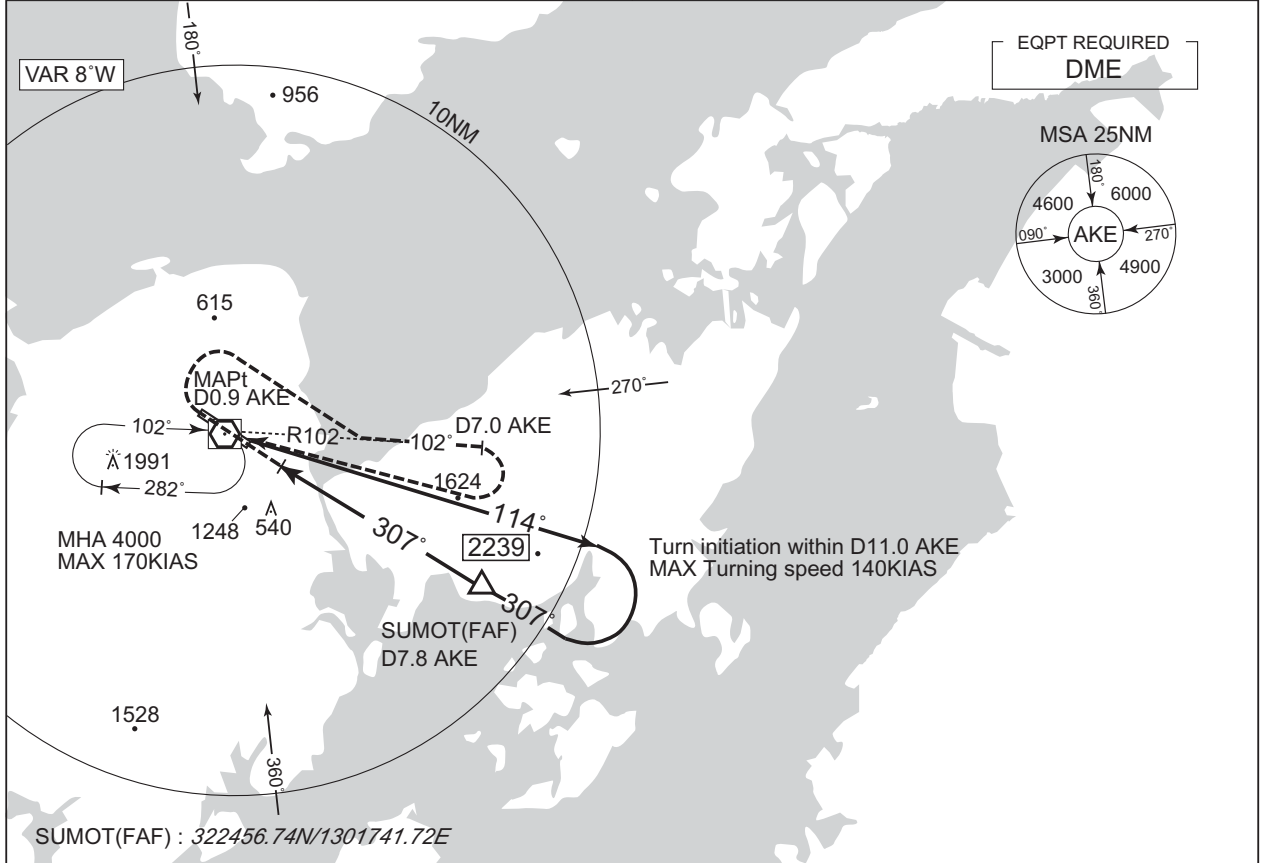
From FUGEN, to SETME at or above 4000FT, to TSUJI between 3000FT and 2400FT.

Serial Number	Path Descriptor	Waypoint Identifier	Fly Over	Course °M(°T)	Magnetic Variation	Distance (NM)	Turn Direction	Altitude (FT)	Speed (KIAS)	Vertical Angle	Navigation Specification
001	IF	FUGEN	-	-	-7.7	-	-	-	-	-	RNP1
002	TF	SETME	-	268 (260.2)	-7.7	9.0	-	+4000	-	-	RNP1
003	TF	TSUJI	-	268 (260.1)	-7.7	10.7	-	-3000 +2400	-	-	RNP1

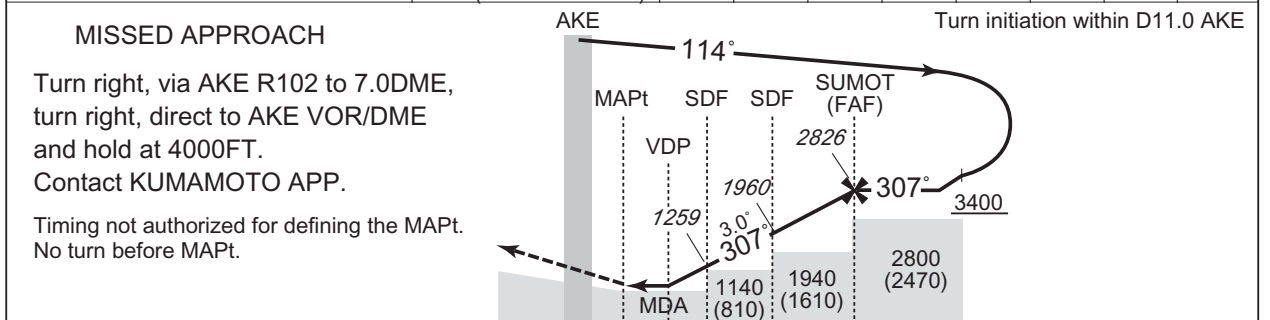
CHANGE : Course FM FUGEN to IRUKA. VAR.

INSTRUMENT APPROACH CHART

RJDA / AMAKUSA		VOR RWY31	
KUMAMOTO APP 127.0 – 126.5 134.0 – 258.9	AMAKUSA VOR/DME 113.45 AKE CH-81Y 32°28'49"N/130°09'39"E	-	NO RADAR



	NM to AKE	MAPt	2	3	4	5	6	7	FAF
	ALT (3.0° APCH Path)	-	973	1291	1610	1928	2246	2565	2826



	DME to AKE	0.1	0.9	1.7	2.9	5.1	7.8
	NM to THR	0	0.8	1.6	2.8	5.0	7.7

Missed APCH climb gradient MNM 5.0%

MINIMA		THR elev. 330	AD elev. 340	
CAT			CIRCLING	
	MDA(H)	CMV	MDA(H)	VIS
A	830 (500)	1500	960 (620)	1600
B			1020 (680)	
C	-	-	-	-
D	-	-	-	-

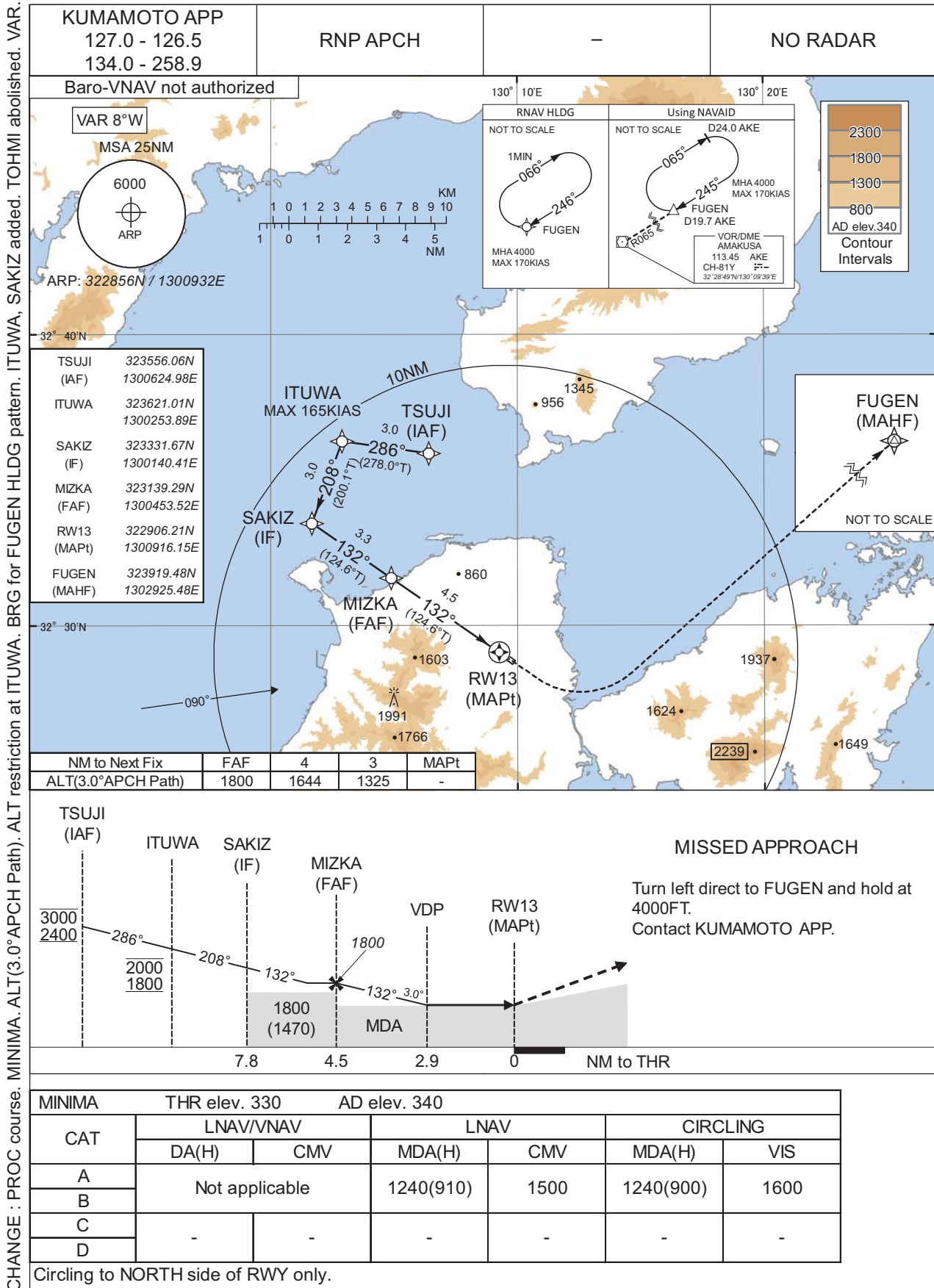
MINIMA with Missed APCH climb gradient of 2.5% are not established.
Circling to NORTH side of RWY only.

CHANGE : VAR.

INSTRUMENT APPROACH CHART

RJDA / AMAKUSA

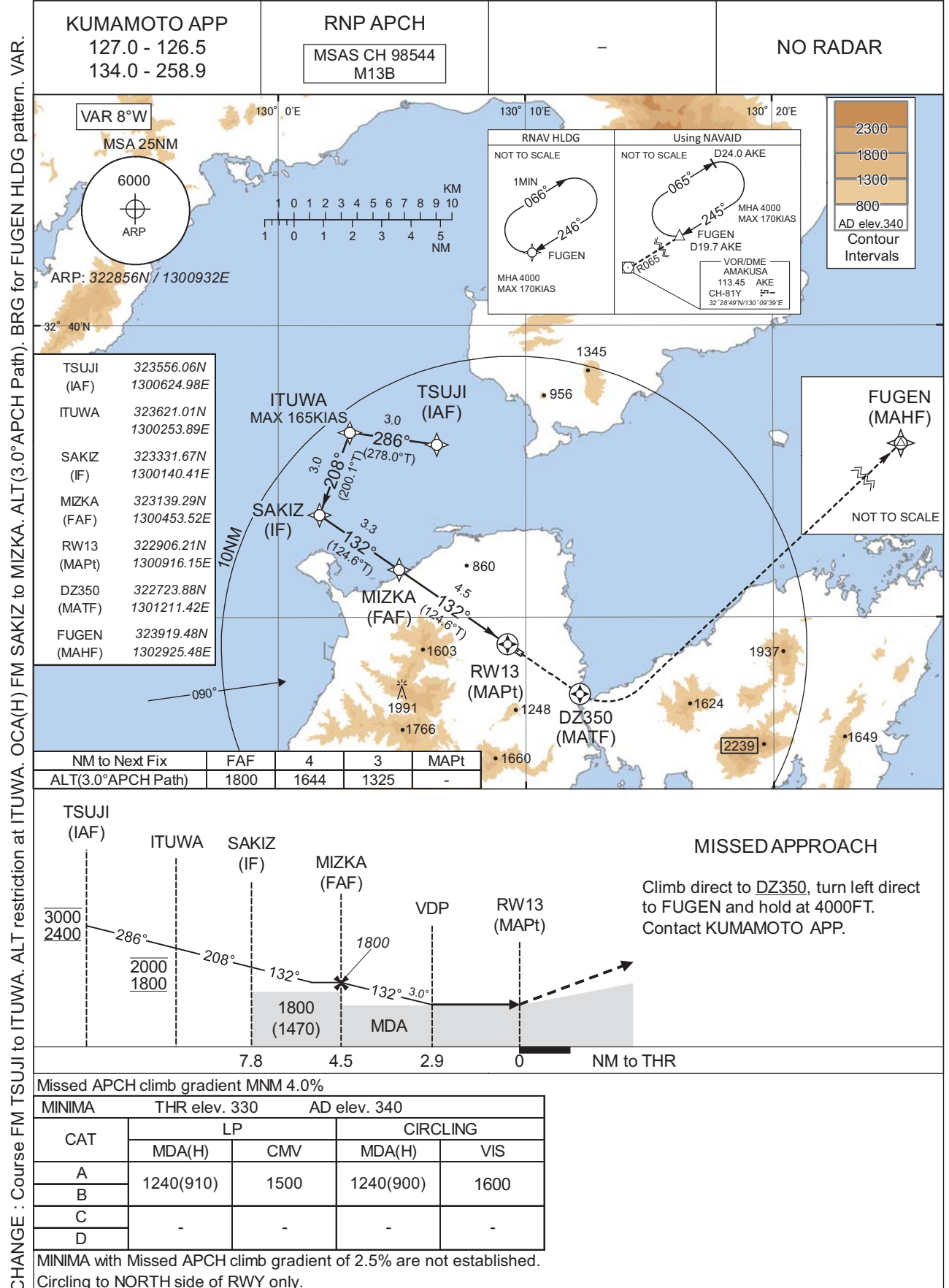
RNP Z RWY13



INSTRUMENT APPROACH CHART

RJDA / AMAKUSA

RNP X RWY13(LP only)



INSTRUMENT APPROACH CHART

RJDA / AMAKUSA

RNP X RWY13(LP only)

FAS DATA BLOCK

Operation type	0	LTP/FTP ellipsoidal height	+01335
SBAS service provider identifier	2	FPAP latitude	322834.9695N
Airport identifier	RJDA	FPAP longitude	1301009.6325E
Runway	13	Threshold crossing height	00012.2
Approach performance designator	0	TCH units selector	1
Route indicator	X	Glide path angle	03.00
Reference path data selector	0	Course width at threshold	105.00
Reference path ID	M13B	∠ length offset	0696
LTP/FTP latitude	322906.1830N	HAL	40.0
LTP/FTP longitude	1300916.1515E	VAL	0.0
CRC remainder	F4E11814		

Required additional data

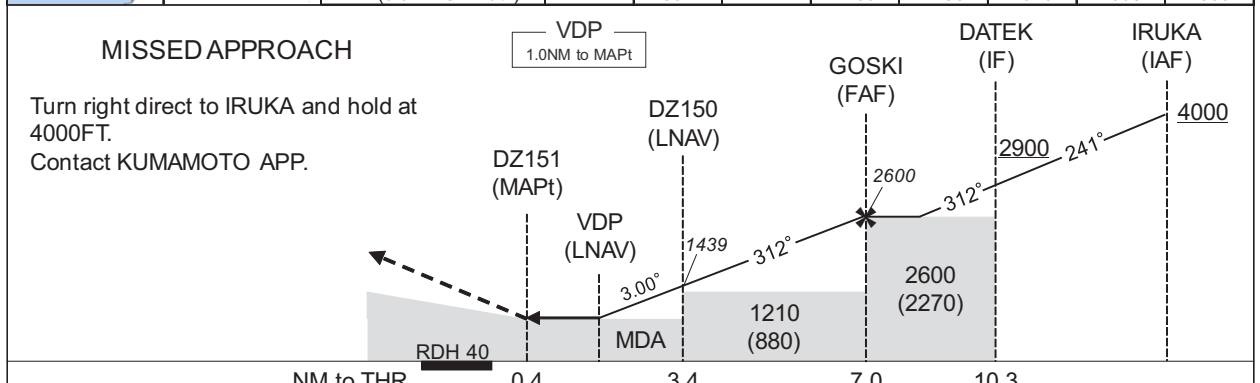
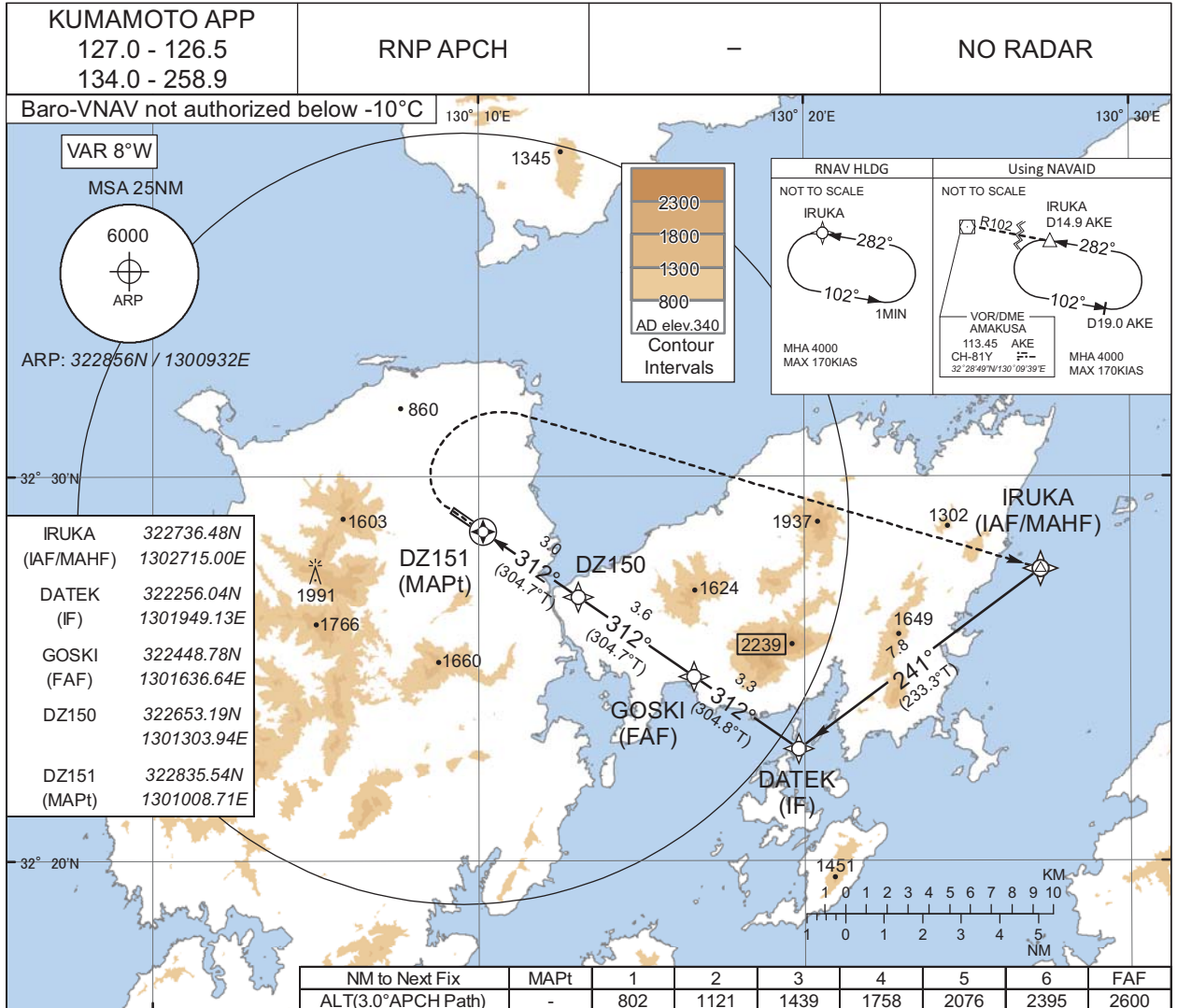
LTP/FTP orthometric height	100.8
----------------------------	-------

CHANGE : Description of PROC name.

INSTRUMENT APPROACH CHART

RJDA / AMAKUSA

RNP Z RWY31



Missed APCH climb gradient MNM 5.0%

CAT	LNAV/VNAV		LNAV		CIRCLING	
	DA(H)	CMV	MDA(H)	CMV	MDA(H)	VIS
A	750(420)	1500	750(420)	1500	960(620)	1600
B					1020(680)	
C	-	-	-	-	-	-
D	-	-	-	-	-	-

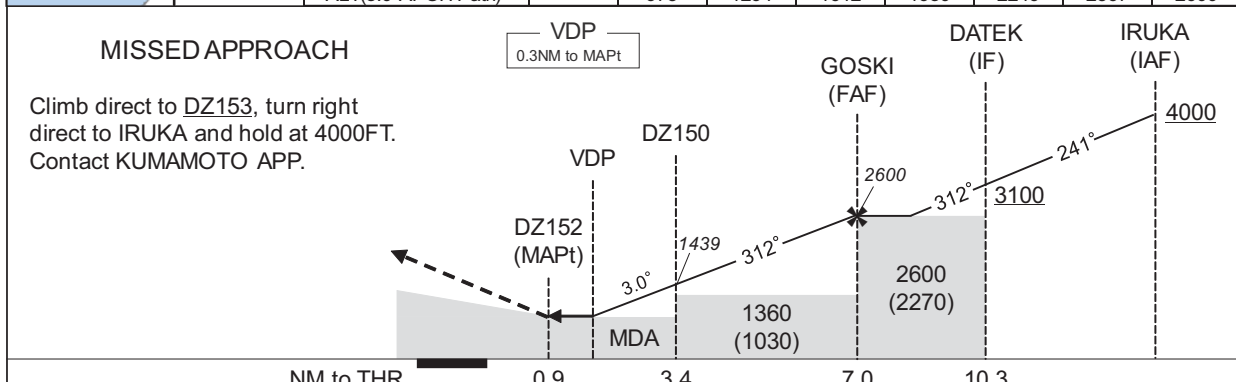
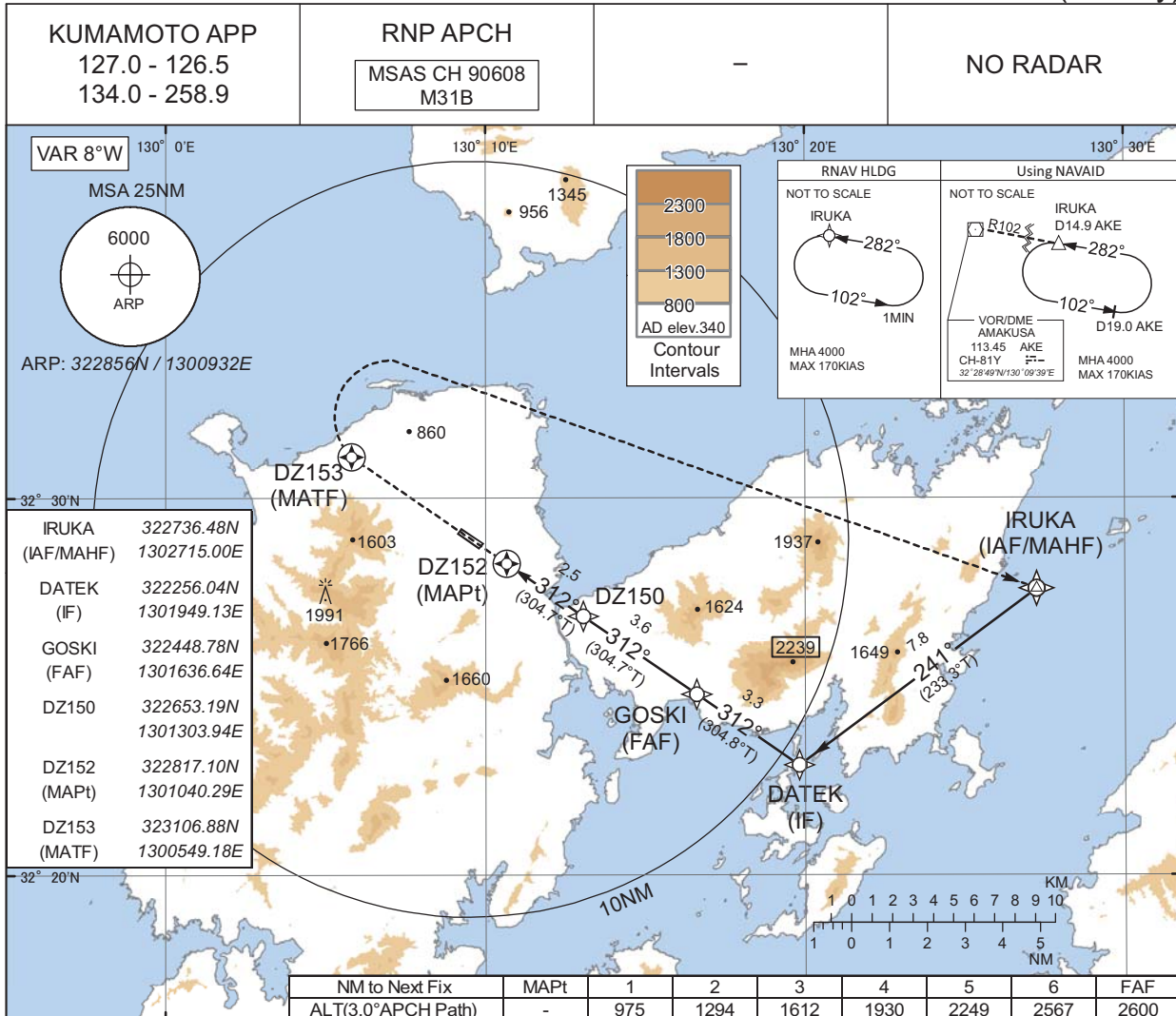
MINIMA with Missed APCH climb gradient of 2.5% are not established.
Circling to NORTH side of RWY only.

CHANGE : VAR.

INSTRUMENT APPROACH CHART

RJDA / AMAKUSA

RNP X RWY31(LP only)



Missed APCH climb gradient MNM 5.0%

CAT	THR elev. 330		AD elev. 340	
	MDA(H)	CMV	MDA(H)	VIS
A	700(370)	1500	960(620)	1600
B	-	-	1020(680)	
C	-	-	-	-
D	-	-	-	-

MINIMA with Missed APCH climb gradient of 2.5% are not established.
Circling to NORTH side of RWY only.

CHANGE : VAR.

RJDA / AMAKUSA

Visual REP



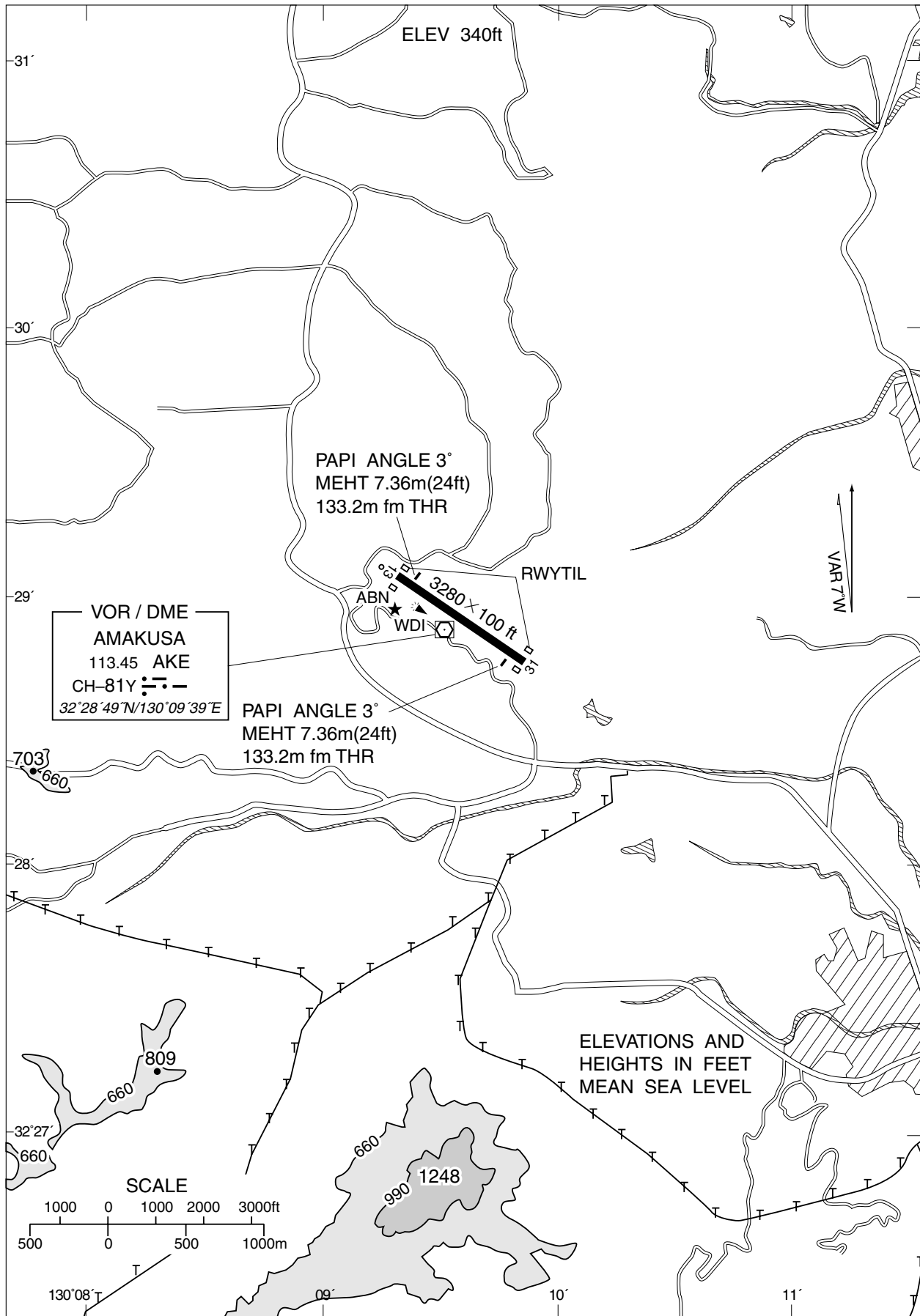
※図中に標高を示す数字がある場合、単位はメートル(m)である。The unit of measurement used to express elevation is meter(m).

CHANGE : Map updated. BRG/DIST from ARP.

Call sign	BRG / DIST from ARP	Remarks
口之津 Kuchinotsu	013°T / 7.7NM	港 Port
湯島 Yushima	051°T / 11.6NM	島 Island
通詞島 Tsuji-shima	331°T / 4.7NM	島 Island
富岡 Tomioka	294°T / 7.6NM	岬 Cape
島子 Shimago	094°T / 4.9NM	漁港 Port
横島 Yokoshima	150°T / 7.6NM	島 Island

RJDA / AMAKUSA

LDG CHART



RJDA / AMAKUSA

Minimum Vectoring Altitude CHART

