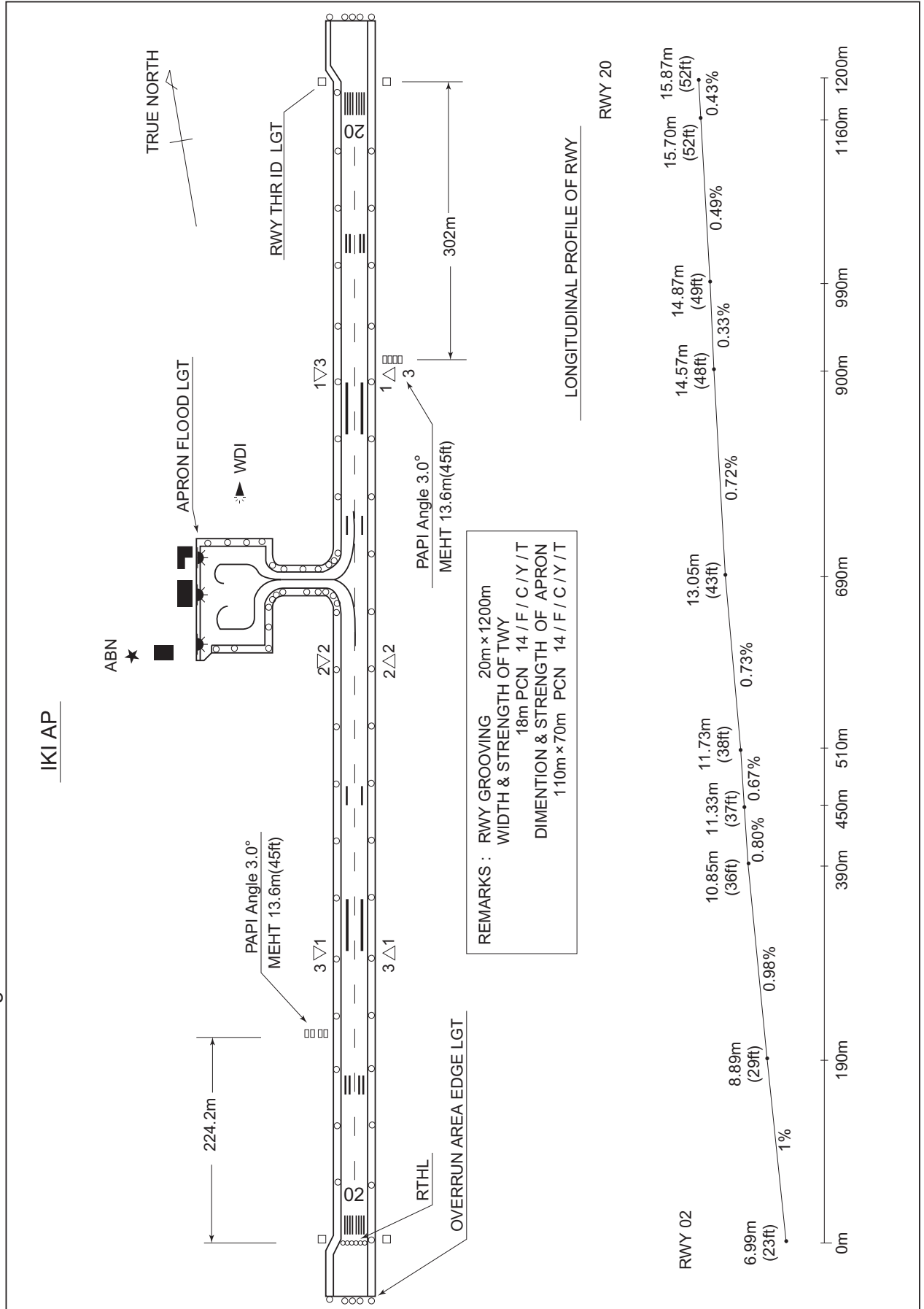


RJDB / IKI

AD CHART

CHANGE : Overrun area marking erased.



INTENTIONALLY LEFT BLANK

STANDARD DEPARTURE CHART - INSTRUMENT

RJDB / IKI

SID

FUKUOKA FIVE DEPARTURE

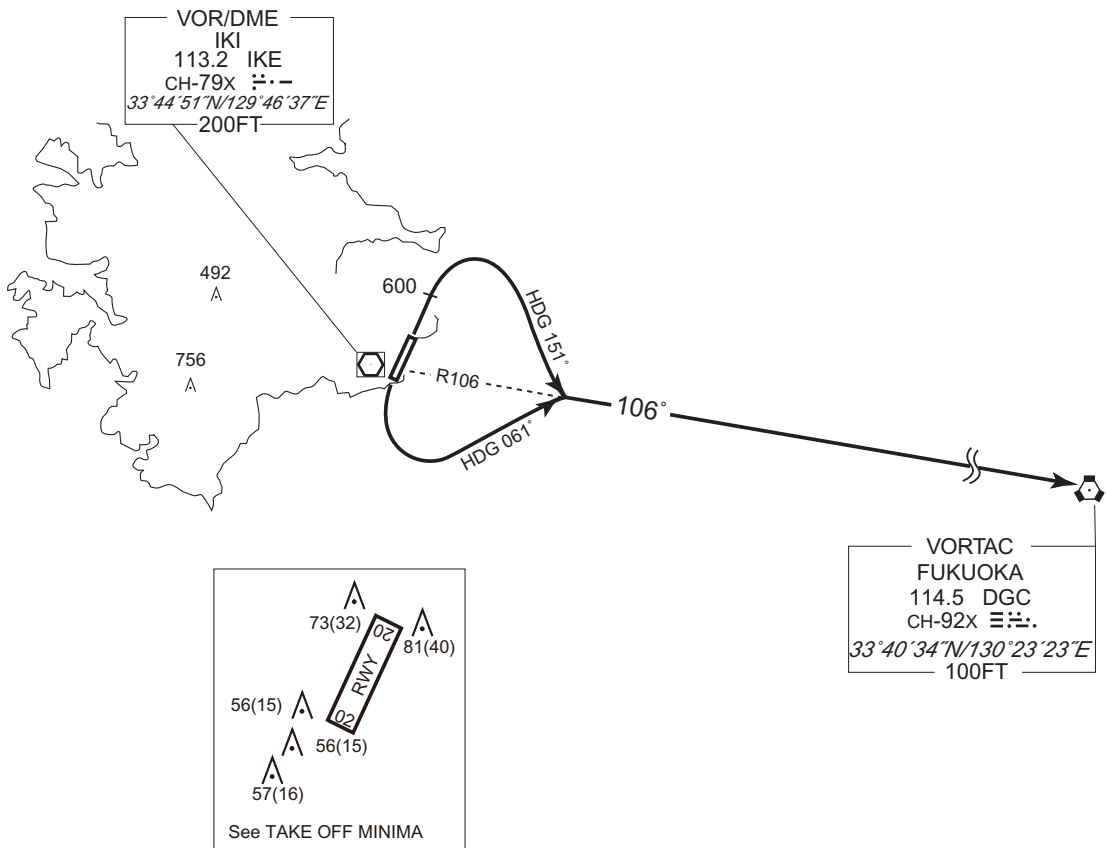
RWY 02 : Climb RWY HDG to 600FT, turn right HDG 151°...

RWY 20 : Turn left HDG 061°...

...to intercept and proceed via IKE R106 to DGC VORTAC.

Note RWY02 : 6.7% climb gradient required up to 600FT.

OBST ALT 299FT located at 0.7NM 360° FM end of RWY02.



CHANGE : PROC renamed. PROC course. OBST.

STANDARD DEPARTURE CHART - INSTRUMENT

RJDB / IKI

SID

IKI REVERSAL THREE DEPARTURE

RWY 02 : Climb RWY HDG to 1600FT, turn right,...

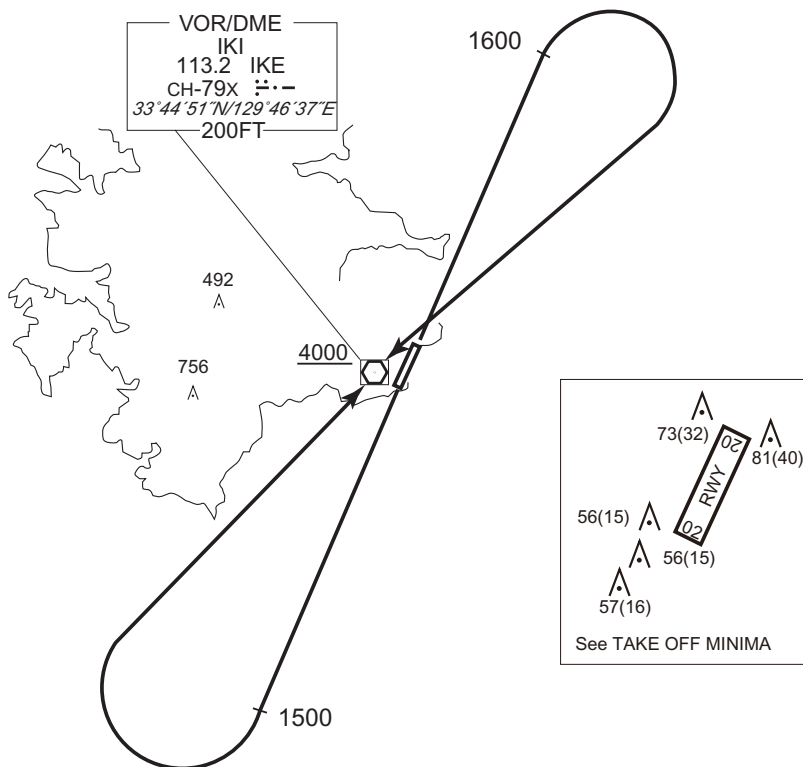
RWY 20 : Climb RWY HDG to 1500FT, turn right,...

...proceed to IKE VOR/DME.

Cross IKE VOR/DME at or above 4000FT.

Note RWY02 : 6.7% climb gradient required up to 600FT.

OBST ALT 299FT located at 0.7NM 360° FM end of RWY02.



CHANGE : OBST.

STANDARD DEPARTURE CHART - INSTRUMENT

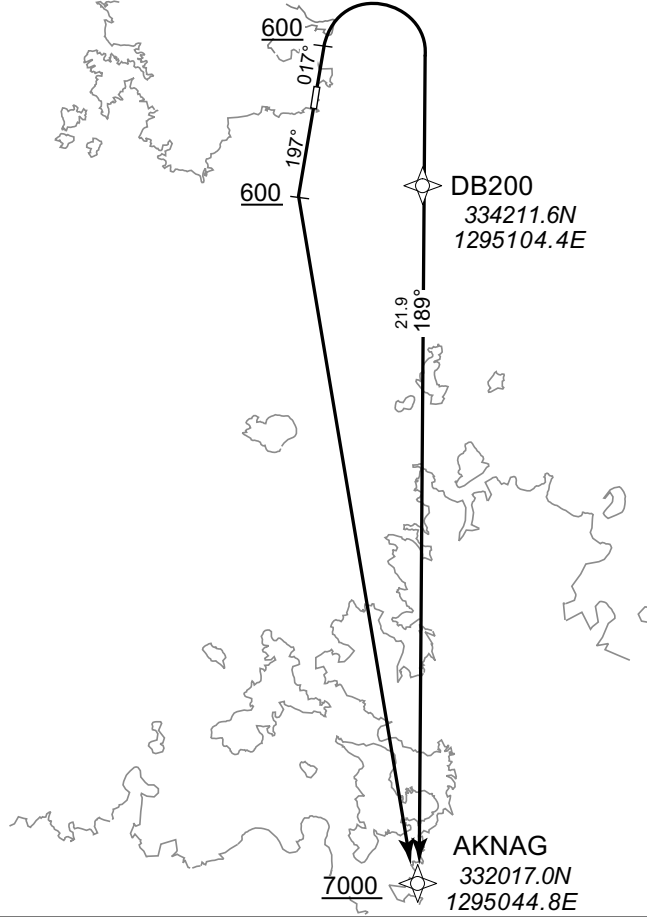
RJDB / IKI RNAV SID

AKNAG ONE DEPARTURE

RNP1

Note GNSS required.

VAR 8°W



RWY 02 : Climb on HDG017° at or above 600FT, turn right direct to DB200, to AKNAG at or above 7000FT.

RWY 20 : Climb on HDG197° at or above 600FT, turn left direct to AKNAG at or above 7000FT.

Note RWY02 : 6.7% climb gradient required up to 600FT.

OBST ALT 299FT located at 0.7NM 360° FM end of RWY02.

CHANGE : Navigation Specification(Basic RNP1 → RNP1).

RWY02

Serial Number	Path Descriptor	Waypoint Identifier	Fly Over	Course °M(°T)	Magnetic Variation	Distance (NM)	Turn Direction	Altitude (FT)	Speed (KIAS)	Vertical Angle	Navigation Specification
001	VA	—	—	017 (009.3)	-7.9	—	—	+600	—	—	RNP1
002	DF	DB200	—	—	-7.9	—	R	—	—	—	RNP1
003	TF	AKNAG	—	189 (180.7)	-7.9	21.9	—	+7000	—	—	RNP1

RWY20

Serial Number	Path Descriptor	Waypoint Identifier	Fly Over	Course °M(°T)	Magnetic Variation	Distance (NM)	Turn Direction	Altitude (FT)	Speed (KIAS)	Vertical Angle	Navigation Specification
001	VA	—	—	197 (189.3)	-7.9	—	—	+600	—	—	RNP1
002	DF	AKNAG	—	—	-7.9	—	L	+7000	—	—	RNP1

INTENTIONALLY LEFT BLANK

STANDARD ARRIVAL CHART - INSTRUMENT

RJDB / IKI

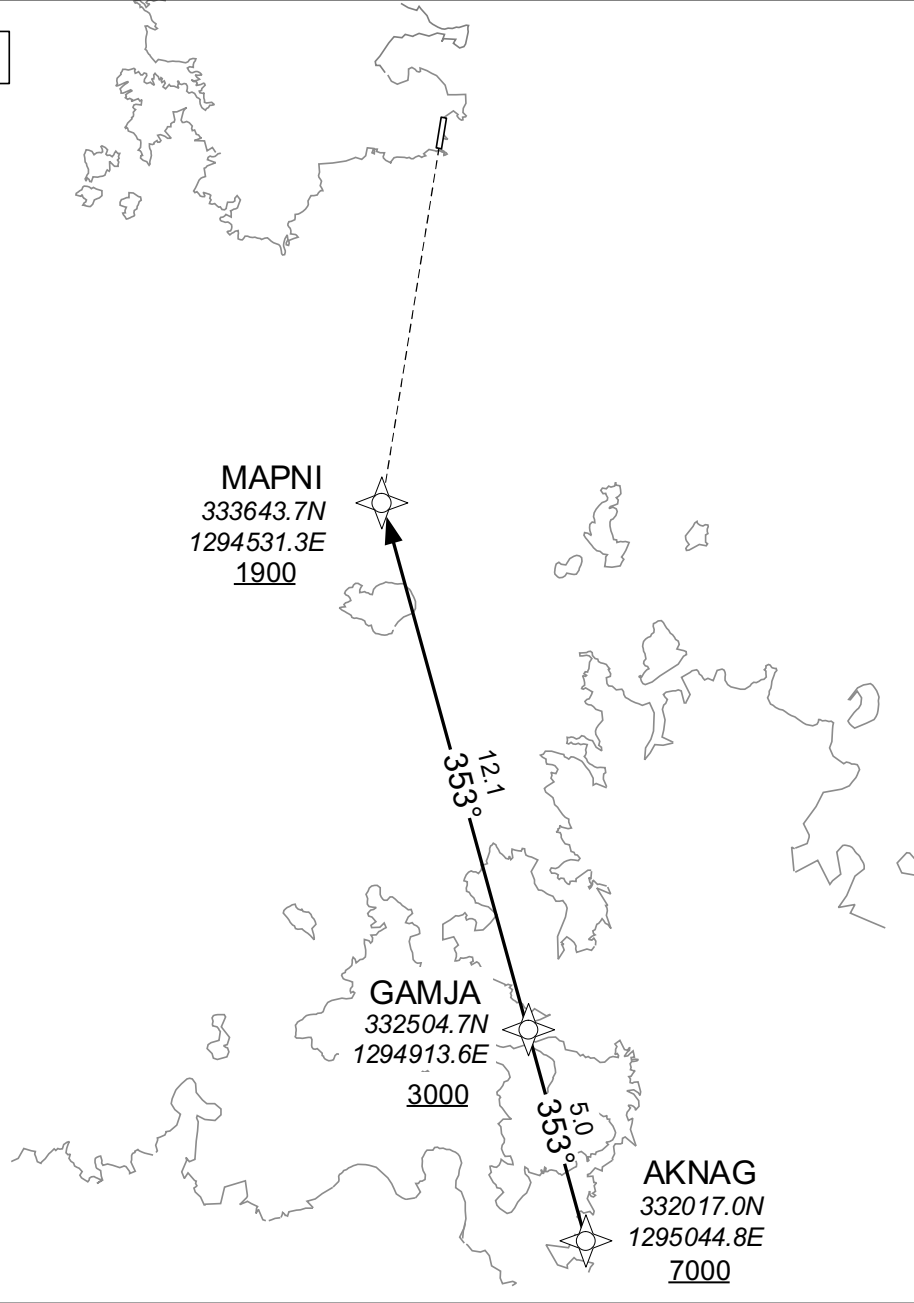
RNAV STAR RWY02

AKNAG ARRIVAL

RNP1

Note GNSS required.

VAR 8°W



CHANGE : Navigation Specification(Basic RNP1 → RNP1).

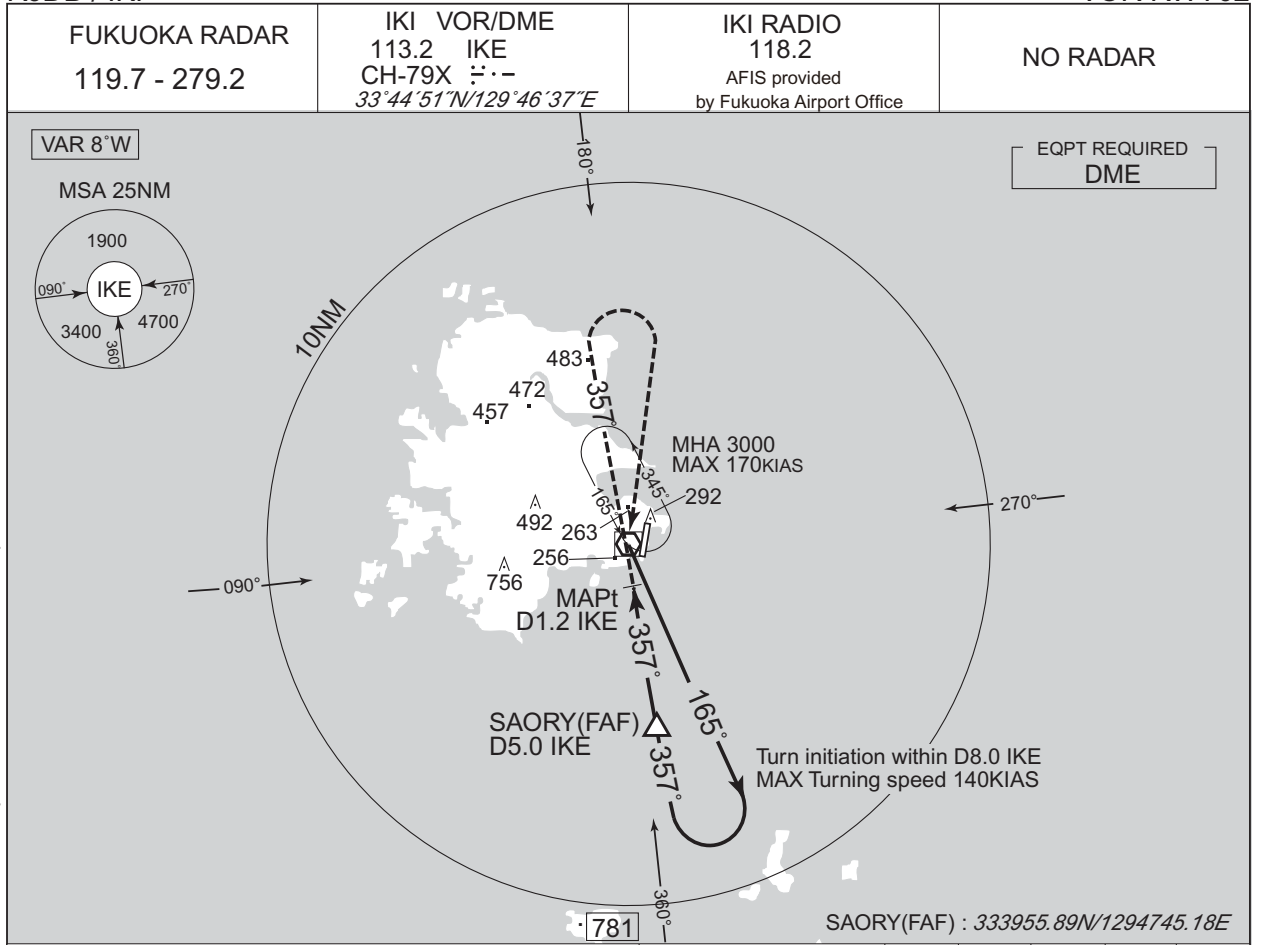
From AKNAG at or above 7000FT, to GAMJA at or above 3000FT, to MAPNI at or above 1900FT.

Serial Number	Path Descriptor	Waypoint Identifier	Fly Over	course ° M(°T)	Magnetic Variation	Distance (NM)	Turn Direction	Altitude (FT)	Speed (KIAS)	Vertical Angle	Navigation Specification
001	IF	AKNAG	—	—	-7.9	—	—	+7000	—	—	RNP1
002	TF	GAMJA	—	353 (345.2)	-7.9	5.0	—	+3000	—	—	RNP1
003	TF	MAPNI	—	353 (345.2)	-7.9	12.1	—	+1900	—	—	RNP1

INTENTIONALLY LEFT BLANK

INSTRUMENT APPROACH CHART

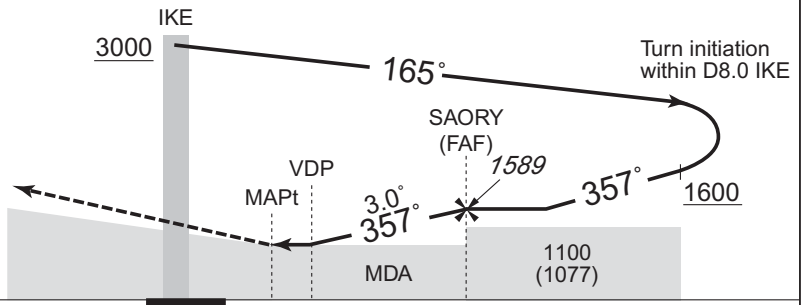
RJDB / IKI VOR RWY02



CHANGE : VAR. PROC course. HLDG course. Missed APCH course. MSA(BTN 090° and 180°)

NM to IKE	MAPt	2	3	4	FAF
ALT (3.0° APCH Path)	-	633	952	1270	1589

MISSED APPROACH
Climb to 1500FT via IKE R357, turn right, direct to IKE VOR/DME and hold at 3000FT. Contact FUKUOKA RADAR.



Timing not authorized for defining the MAPt.

DME to IKE	0.2	1.2	1.5	5.0
NM to THR	0	1.0	1.2	4.8

MINIMA		THR elev. 23	AD elev. 41	
CAT			CIRCLING	
	MDA(H)	CMV	MDA(H)	VIS
A	440 (417)	1500	660 (619)	1600
B				
C	-	-	-	-
D				

INSTRUMENT APPROACH CHART

RJDB / IKI

VOR RWY20

FUKUOKA RADAR
119.7 - 279.2

IKI VOR/DME
113.2 IKE
CH-79X ---
 $33^{\circ}44'51"N/129^{\circ}46'37"E$

IKI RADIO
118.2
AFIS provided
by Fukuoka Airport Office

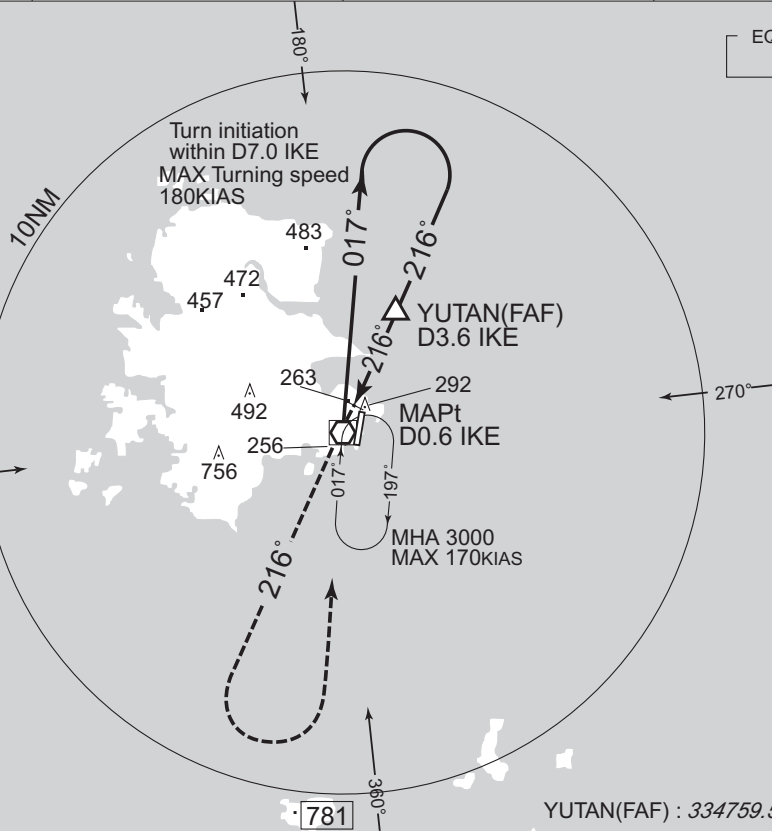
NO RADAR

VAR 8°W

MSA 25NM



EQPT REQUIRED
DME



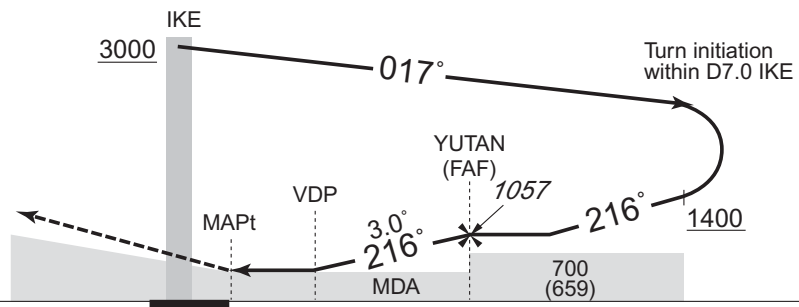
YUTAN(FAF) : $33^{\circ}47'59.59"N/129^{\circ}48'37.31"E$

NM to IKE	MAPt	3	FAF
ALT (3.0° APCH Path)	-	881	1057

MISSED APPROACH

Climb to 1500FT via IKE R216, turn left, direct to IKE VOR/DME and hold at 3000FT. Contact FUKUOKA RADAR.

Timing not authorized for defining the MAPt.



DME to IKE	0.6	2.3	3.6
NM to THR	0	1.7	3.0

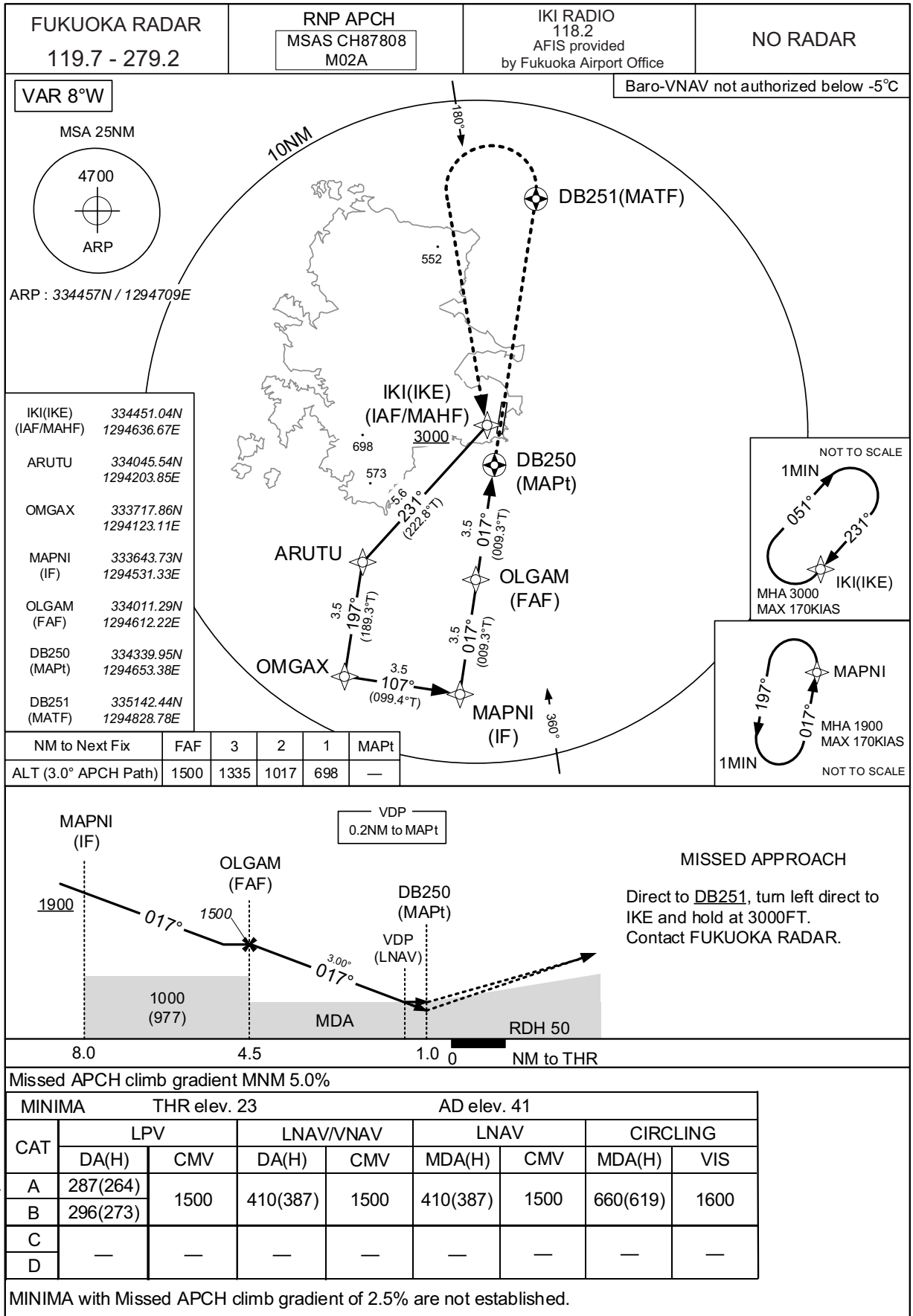
MINIMA		THR elev. 52	AD elev. 41	
CAT			CIRCLING	
	MDA(H)	CMV	MDA(H)	VIS
A	610 (569)	1500	660 (619)	1600
B				
C	-	-	-	-
D	-	-	-	-

CHANGE : VAR. PROC course. HLDG course. Missed APCH course. MSA(BTN 090° and 180°)

INSTRUMENT APPROACH CHART

RJDB / IKI

RNP RWY02



INSTRUMENT APPROACH CHART

RJDB / IKI

RNP RWY02

FAS DATA BLOCK

Operation type	0	LTP/FTP ellipsoidal height	+00382
SBAS service provider identifier	2	FPAP latitude	334531.5680N
Airport identifier	RJDB	FPAP longitude	1294715.4170E
Runway	02	Threshold crossing height	00015.0
Approach performance designator	0	TCH units selector	1
Route indicator		Glide path angle	03.00
Reference path data selector	0	Course width at threshold	105.00
Reference path ID	M02A	∠ length offset	0496
LTP/FTP latitude	334437.2865N	HAL	40.0
LTP/FTP longitude	1294704.7065E	VAL	50.0
CRC remainder	5C72DF61		

Required additional data

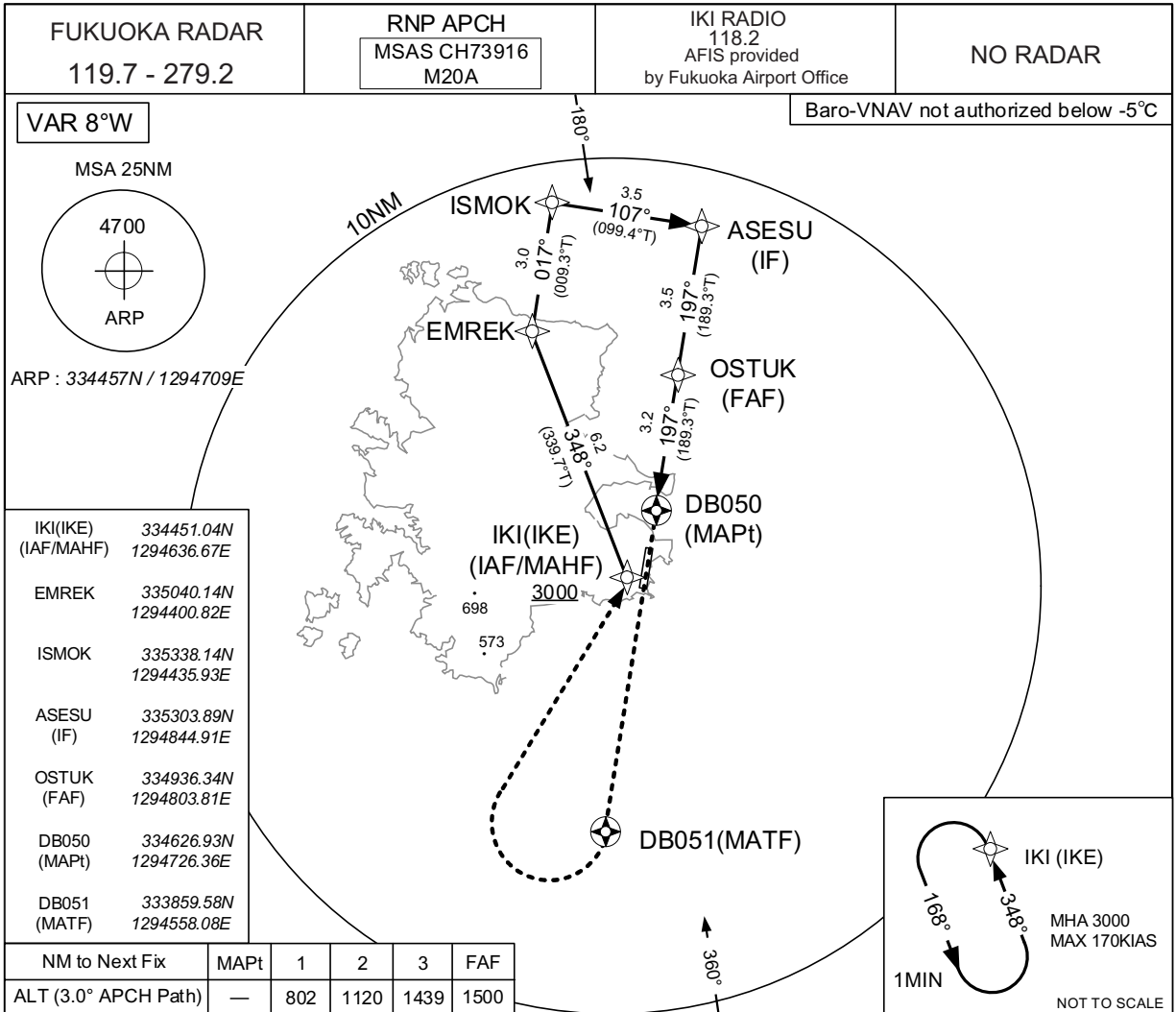
LTP/FTP orthometric height	6.7
----------------------------	-----

CHANGE : Description of FAS DATA BLOCK ITEM(CRC remainder).

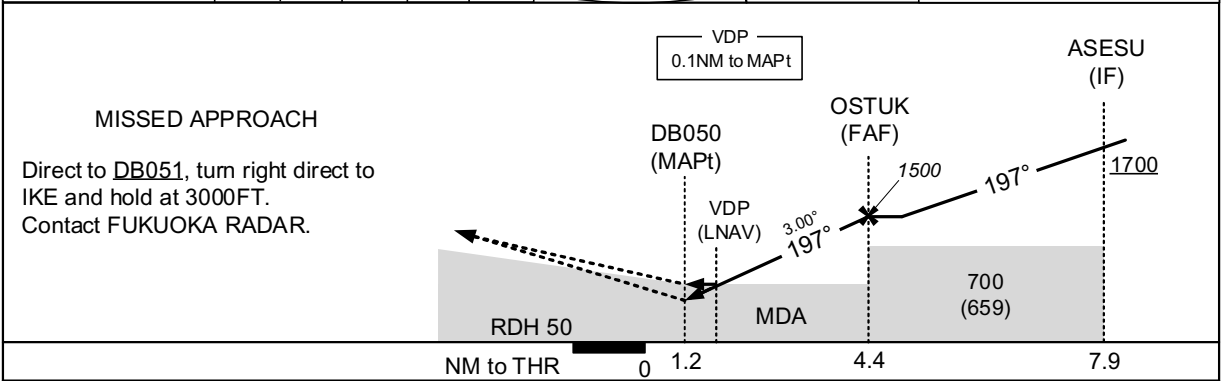
INSTRUMENT APPROACH CHART

RJDB / IKI

RNP RWY20



CHANGE : ALT restriction at ISMOK abolished. ALT restriction at ASESU.



CAT	MINIMA		THR elev. 52		AD elev. 41				
	LPV	DA(H)	CMV	LNAV/VNAV	LNAV	CIRCLING	MDA(H)	VIS	
A	458(406)	—	1500	500(448)	1500	500(459)	1500	660(619)	1600
B	467(415)	—	—	—	—	—	—	—	—
C	—	—	—	—	—	—	—	—	—
D	—	—	—	—	—	—	—	—	—

INSTRUMENT APPROACH CHART

RJDB / IKI

RNP RWY20

FAS DATA BLOCK

Operation type	0	LTP/FTP ellipsoidal height	+00471
SBAS service provider identifier	2	FPAP latitude	334421.4340N
Airport identifier	RJDB	FPAP longitude	1294701.5790E
Runway	20	Threshold crossing height	00015.0
Approach performance designator	0	TCH units selector	1
Route indicator		Glide path angle	03.00
Reference path data selector	0	Course width at threshold	105.00
Reference path ID	M20A	∟ length offset	0496
LTP/FTP latitude	334515.7155N	HAL	40.0
LTP/FTP longitude	1294712.2885E	VAL	50.0
CRC remainder	660F91B2		

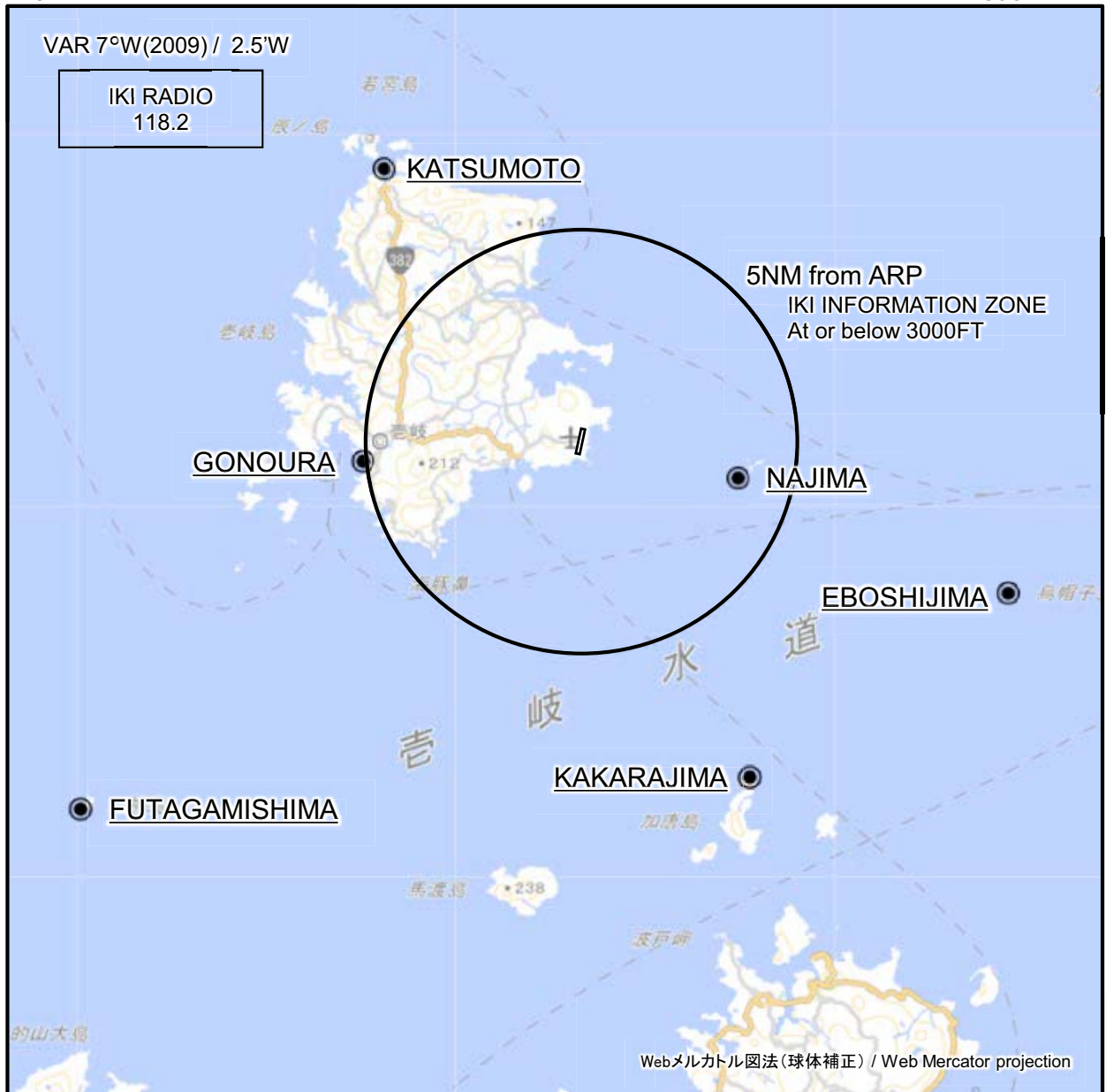
Required additional data

LTP/FTP orthometric height	15.6
----------------------------	------

CHANGE : Description of FAS DATA BLOCK ITEM(CRC remainder).

RJDB / IKI

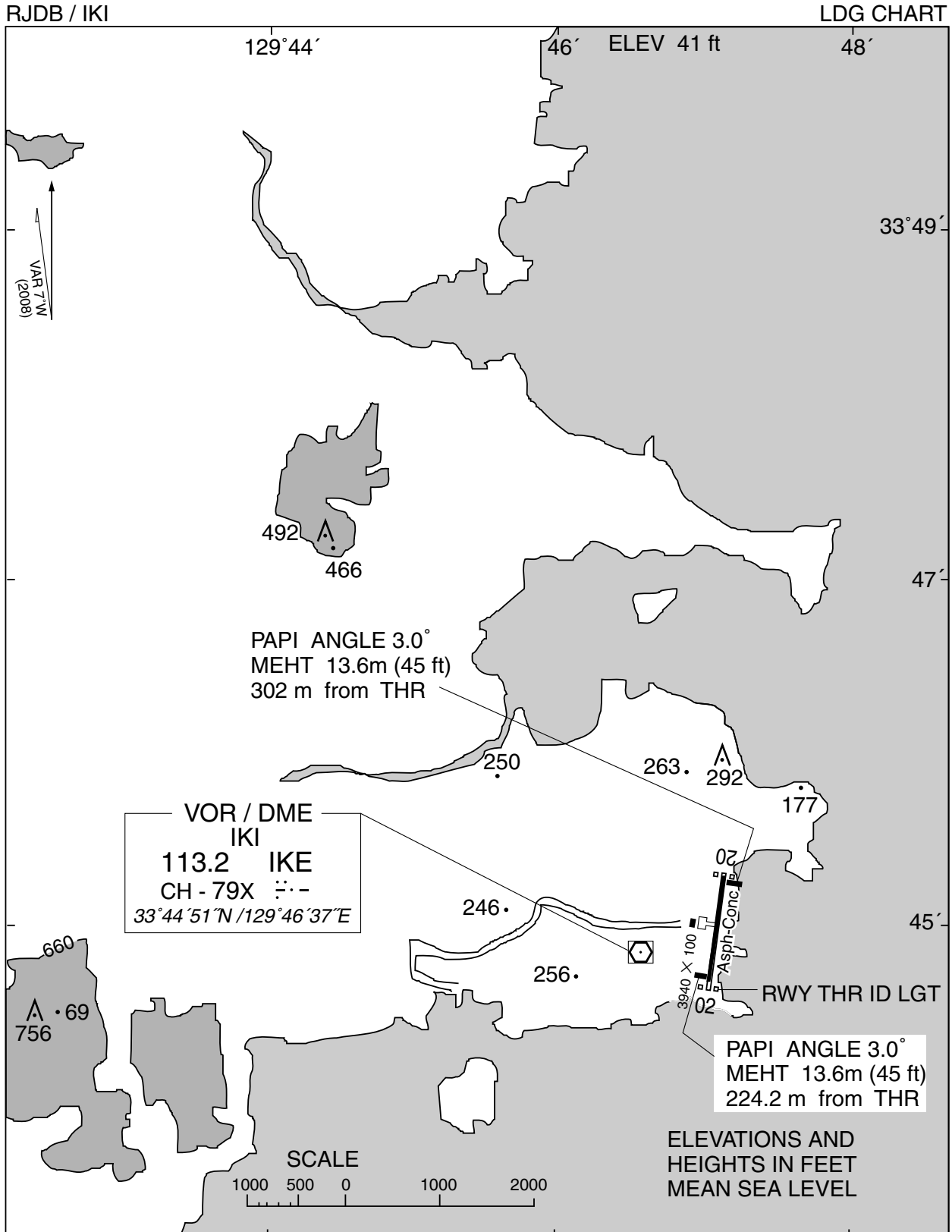
Visual REP



※図中に標高を示す数字がある場合、単位はメートル(m)である。The unit of measurement used to express elevation is meter(m).

CHANGE : Call sign(REMOTE→RADIO):

Call sign	BRG / DIST from ARP	Remarks
勝本 Katsumoto	324°T / 7.9NM	漁港 Harbor
郷ノ浦 Gonoura	265°T / 5.2NM	漁港 Harbor
名島 Najima	103°T / 3.7NM	灯台 Lighthouse
烏帽子島 Eboshijima	110°T / 10.5NM	灯台 Lighthouse
加唐島 Kakarajima	154°T / 8.8NM	灯台 Lighthouse
二神島 Futagamishima	233°T / 14.5NM	灯台 Lighthouse



RJDB / IKI

Minimum Vectoring Altitude CHART

