

AD 2 AERODROMES

RJDB AD 2.1 AERODROME LOCATION INDICATOR AND NAME

RJDB - IKI

RJDB AD 2.2 AERODROME GEOGRAPHICAL AND ADMINISTRATIVE DATA

1	ARP coordinates and site at AD	334457N/1294709E APRX 200m SE of AP administration office
2	Direction and distance from (city)	33nm WNW FUKUOKA
3	Elevation/ Reference temperature	41ft / 30°C (2003-2007)
4	Geoid undulation at AD ELEV PSN	100ft
5	MAG VAR/ Annual change	7°W(2009) / 2.5'W
6	AD Administration, address, telephone, telefax, telex, AFS, e-mail and/or Web-site addresses	Iki Airport Administration Office, Nagasaki Prefectural Government 1725 Ishidachoutsutsukihigashi-fure, Iki-city, Nagasaki, 811-5203 JAPAN Tel: 0920-44-5167 e-mail: s13070@pref.nagasaki.lg.jp
7	Types of traffic permitted(IFR/ VFR)	IFR/VFR
8	Remarks	Nil

RJDB AD 2.3 OPERATIONAL HOURS

1	AD Administration	2300 - 1000
2	Customs and immigration	On request Customs: 0920-52-1112 Immigration: 092-262-2373
3	Health and sanitation	Quarantine(human): On request(0920-52-0089) Quarantine(animal, plant): Nil
4	AIS Briefing Office	Nil
5	ATS Reporting Office(ARO)	Nil
6	MET Briefing Office	H24 (FUKUOKA)
7	ATS	ATS: 2300 - 1000 Remarks: AFIS provided by Fukuoka Airport Office.
8	Fuelling	Nil
9	Handling	Nil
10	Security	2300 - 1000
11	De-icing	Nil
12	Remarks	Nil

RJDB AD 2.4 HANDLING SERVICES AND FACILITIES

1	Cargo-handling facilities	Nil
2	Fuel/ oil types	Nil
3	Fuelling facilities/ capacity	Nil
4	De-icing facilities	Nil
5	Hangar space for visiting aircraft	Nil
6	Repair facilities for visiting aircraft	Nil
7	Remarks	Nil

RJDB AD 2.5 PASSENGER FACILITIES

1	Hotels	In Iki city 11km
2	Restaurants	In Iki city 11km
3	Transportation	Busses and Taxis
4	Medical facilities	In Iki city 11km
5	Bank and Post Office	In Iki city 11km
6	Tourist Office	In Iki city 11km
7	Remarks	Nil

RJDB AD 2.6 RESCUE AND FIRE FIGHTING SERVICES

1	AD category for fire fighting	CAT 5
2	Rescue equipment	Chemical fire fighting truck x 1
3	Capability for removal of disabled aircraft	Nil
4	Remarks	Nil

RJDB AD 2.7 SEASONAL AVAILABILITY-CLEARING

1	Types of clearing equipment	Not AVBL
2	Clearance priorities	Nil
3	Remarks	Nil

RJDB AD 2.8 APRONS, TAXIWAYS AND CHECK LOCATIONS DATA

1	Apron surface and strength	Surface: Asphalt Strength : PCN 14/F/C/Y/T
2	Taxiway width, surface and strength	Width: 18m Surface: Asphalt Strength : PCN 14/F/C/Y/T
3	ACL and elevation	Not Available
4	VOR checkpoints	Not Available
5	INS checkpoints	(Spot NR) 1. 334500.60N,1294703.91E 2. 334458.94N,1294703.63E
6	Remarks	Nil

RJDB AD 2.9 SURFACE MOVEMENT GUIDANCE AND CONTROL SYSTEM AND MARKINGS

1	Use of aircraft stand ID signs, TWY guide lines and Visual docking/ parking guidance system of aircraft stands	Nil
2	RWY and TWY markings and LGT	RWY: RWY02/20 (Marking) RWY designation, RWY CL, RWY THR, Aiming point, TDZ, RWY side stripe (LGT) REDL, RTHL, RENL, RWY DIST marker LGT TWY: (Marking) TWY CL, TWY side stripe (LGT) TWY edge LGT
3	Stop bars	Nil
4	Remarks	(LGT) Apron flood LGT

RJDB AD 2.10 AERODROME OBSTACLES

- In Area2 See obstacle data
- In Area3 To be developed

RJDB AD 2.11 METEOROLOGICAL INFORMATION PROVIDED

1	Associated MET Office	FUKUOKA
2	Hours of service MET Office outside hours	H24 (FUKUOKA)
3	Office responsible for TAF preparation Periods of validity	Nil
4	Trend forecast Interval of issuance	Nil
5	Briefing/ consultation provided	Briefing is available upon inquiry at FUKUOKA.
6	Flight documentation Language(s) used	C En
7	Charts and other information available for briefing or consultation	S ₆ , U ₈₅ , U ₇ , U ₅ , U ₃ , U ₂₅ , U ₂ /T _r , P _S , P ₅ , P ₃ , P ₂₅ , P _{SWE} , P _{SWF} , P _{SWG} , P _{SWI} , P _{SWM} , P _{SW} (domestic), E, C, W _E , W _F , W _G , W _I , W, N
8	Supplementary equipment available for providing information	Nil
9	ATS units provided with information	RADIO
10	Additional information(limitation of ser- vice, etc.)	Nil

RJDB AD 2.12 RUNWAY PHYSICAL CHARACTERISTICS

Designations RWY NR	TRUE BRG	Dimensions of RWY(M)	Strength(PCN) and surface of RWY	THR coordinates THR geoid undulation	THR elevation and highest elevation of TDZ of precision APP RWY
1	2	3	4	5	6
02	009.36°	1200x30	PCN 13/F/C/Y/T	334437.31N/1294704.70E 123ft	THR ELEV: 23ft
20	189.36°	1200x30	Asphalt Concrete	334515.74N/1294712.29E 152ft	THR ELEV: 52ft
Slope of RWY	Strip Dimensions(M)	RESA (Overrun) Dimensions(M)	Remarks		
7	10	11	14		
See AD 2.24 AD Chart	1320x90 1320x90	10 x (MNM:10 MAX:120)* 35 x (MNM:70 MAX:90)* *For detail, ask airport administrator	RWY grooving 1200m X 20m		

RJDB AD 2.13 DECLARED DISTANCES

RWY Designator	TORA (m)	TODA (m)	ASDA (m)	LDA (m)	Remarks
1	2	3	4	5	6
02	1200	1200	1200	1200	Nil
20	1200	1200	1200	1200	Nil

RJDB AD 2.14 APPROACH AND RUNWAY LIGHTING

RWY Designator	APCH LGT type LEN INTST	RTHL Color WBAR	PAPI (VASIS) Angle DIST FM THR MEHT	RTZL LEN	RCLL LEN Spacing Color INTST	REDL LEN Spacing Color INTST	RENL Color WBAR	STWL LEN Color
1	2	3	4	5	6	7	8	9
02	Nil	Green	PAPI 3.0° /LEFT 224.2m 45ft	Nil	Nil	1200m 60m Coded color (White/Yellow) LIH	Red	Nil (*1)
20	Nil	Green	PAPI 3.0° /LEFT 302m 45ft	Nil	Nil	1200m 60m Coded color (White/Yellow) LIH	Red	Nil (*1)
Remarks								
10								
Overrun area edge LGT (LEN:60m Color: Red) RWY THR ID LGT for RWY 02/20 THR (Color: White)								

The unusable area of PAPI for runway 20 is shown in the charts below.

滑走路20末端側進入角指示灯の使用制限は下図のとおり。

The unusable area of PAPI for runway 20 is shown in the charts below.



RJDB AD 2.15 OTHER LIGHTING, SECONDARY POWER SUPPLY

1	ABN/ IBN location, characteristics and hours of operation	ABN:334459N/1294701E, White/Green EV4.3sec, HO
2	LDI location and LGT Anemometer location and LGT	LDI: Nil Anemometer : 490m from RWY 20 THR
3	TWY edge and centerline lighting	TWY edge LGT: Blue
4	Secondary power supply/ switch-over time	Nil
5	Remarks	WDI LGT

RJDB AD 2.16 HELICOPTER LANDING AREA

Nil

RJDB AD 2.17 ATS AIRSPACE

Designation and lateral limits		Vertical limits (ft)	Airspace classification	ATS unit call sign Language	Remarks
1		2	3	4	6
Iki Information Zone	Area within a radius of 5nm(9km) of Iki ARP	3,000 or below	E	Iki Radio En	

RJDB AD 2.18 ATS COMMUNICATION FACILITIES

Service designation	Call sign	Frequency	Hours of operation	Remarks
1	2	3	4	5
AFIS	IKI RADIO	118.2MHz	2300 - 1000	Operated by Fukuoka Airport Office

RJDB AD 2.19 RADIO NAVIGATION AND LANDING AIDS

Type of aid (VOR declina- tion)	ID	Frequency	Hours of operation	Position of transmitting antenna coordinates	Elevation of DME transmitting antenna	Remarks
1	2	3	4	5	6	7
VOR (8°W/2021)	IKE	113.2MHz	H24	334451.04N/ 1294636.67E		
DME	IKE	1166MHz (CH-79X)	H24	334451.04N/ 1294636.67E	216ft	

RJDB AD 2.20 LOCAL TRAFFIC REGULATIONS

1. Airport regulations

Nil

2. Taxiing to and from stands

Nil

3. Parking area for small aircraft(General aviation)

Nil

4. Parking area for helicopters

Nil

5. Apron - taxiing during winter conditions

Nil

6. Taxiing - limitations

Nil

7. School and training flights - technical test flights - use of runways

Nil

8. Helicopter traffic - limitation

Nil

9. Removal of disabled aircraft from runways

Nil

RJDB AD 2.21 NOISE ABATEMENT PROCEDURES

Nil

RJDB AD 2.22 FLIGHT PROCEDURES

TAKE OFF MINIMA								
	RWY	ACFT CAT	REDL & RCLL		REDL or RCLL or RCL marking		NIL (DAYTIME ONLY)	
			CEIL-RVR	CEIL-VIS	CEIL-RVR	CEIL-VIS	CEIL-RVR	CEIL-VIS
Multi-Engine ACFT with TKOF ALTN AP FILED	02	A,B	-	-	-	200'-1600m	-	200'-1600m
	20	A,B	-	-	-	200'-1600m	-	200'-1600m
OTHER	02	A,B	AVBL LDG MINIMA					
	20							

RJDB AD 2.23 ADDITIONAL INFORMATION

Nil

RJDB AD 2.24 CHARTS RELATED TO AN AERODROME

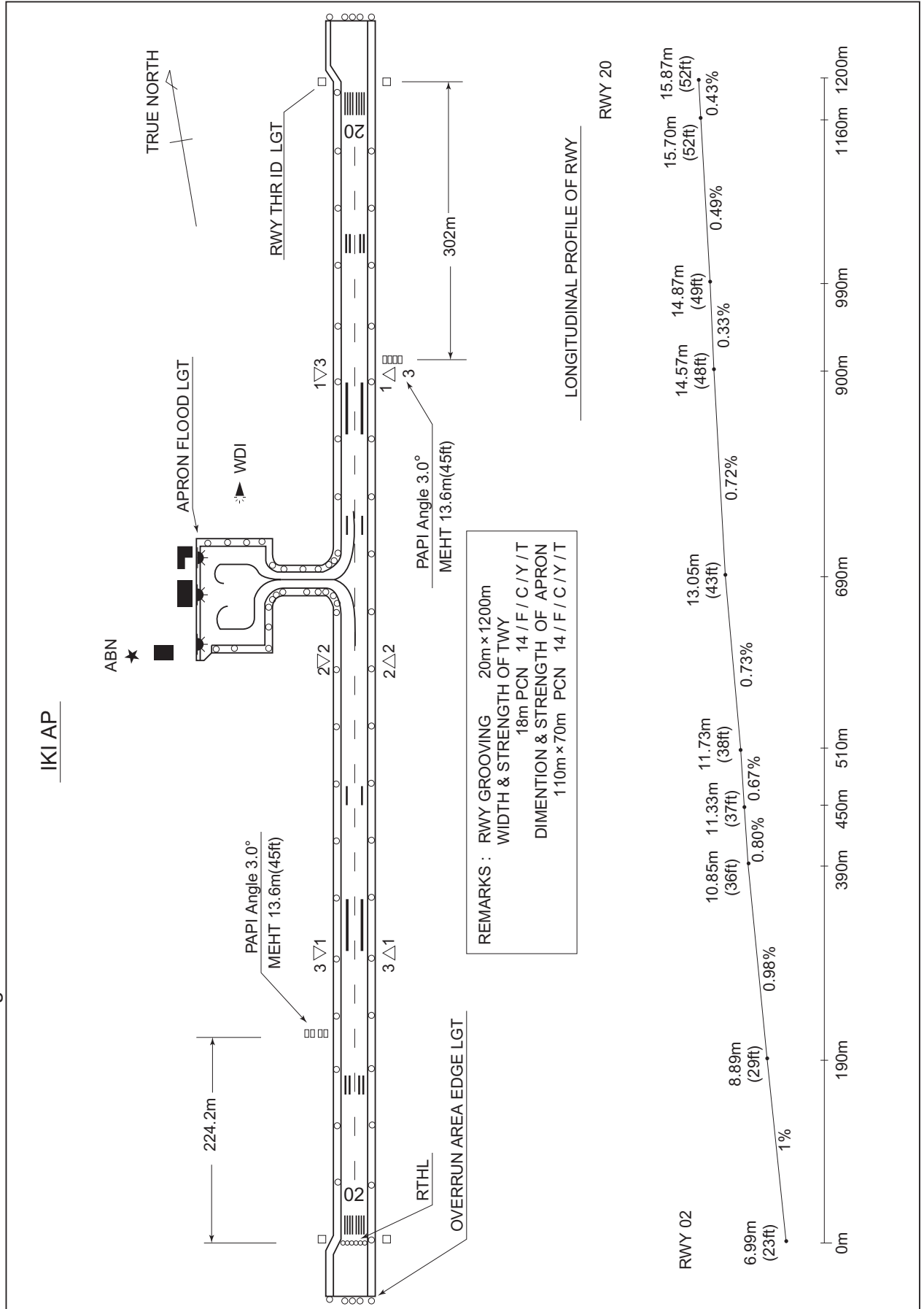
- Aerodrome/Heliport Chart
- Standard Departure Chart - Instrument(FUKUOKA, IKI REVERSAL)
- Standard Departure Chart - Instrument(AKNAG-RNAV)
- Standard Arrival Chart - Instrument(AKNAG-RNAV)
- Instrument Approach Chart(VOR RWY02)
- Instrument Approach Chart(VOR RWY20)
- Instrument Approach Chart(RNP RWY02)
- Instrument Approach Chart(RNP RWY20)
- Other Chart (Visual REP)
- Other Chart (LDG CHART)
- Other Chart (MVA CHART)

INTENTIONALLY LEFT BLANK

RJDB / IKI

AD CHART

CHANGE : Overrun area marking erased.



INTENTIONALLY LEFT BLANK

STANDARD DEPARTURE CHART - INSTRUMENT

RJDB / IKI

SID

FUKUOKA FIVE DEPARTURE

RWY 02 : Climb RWY HDG to 600FT, turn right HDG 151°...

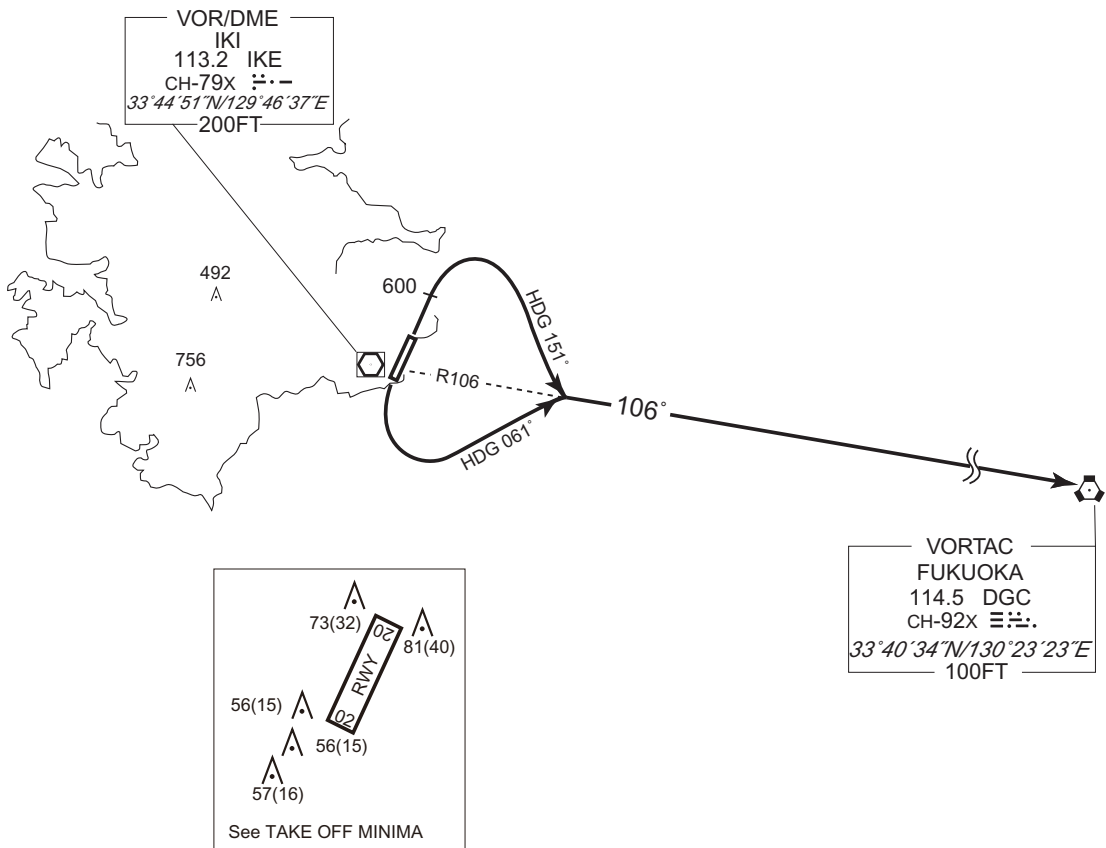
RWY 20 : Turn left HDG 061°...

...to intercept and proceed via IKE R106 to DGC VORTAC.

Note RWY02 : 6.7% climb gradient required up to 600FT.

OBST ALT 299FT located at 0.7NM 360° FM end of RWY02.

CHANGE : PROC renamed. PROC course. OBST.



STANDARD DEPARTURE CHART - INSTRUMENT

RJDB / IKI

SID

IKI REVERSAL THREE DEPARTURE

RWY 02 : Climb RWY HDG to 1600FT, turn right,...

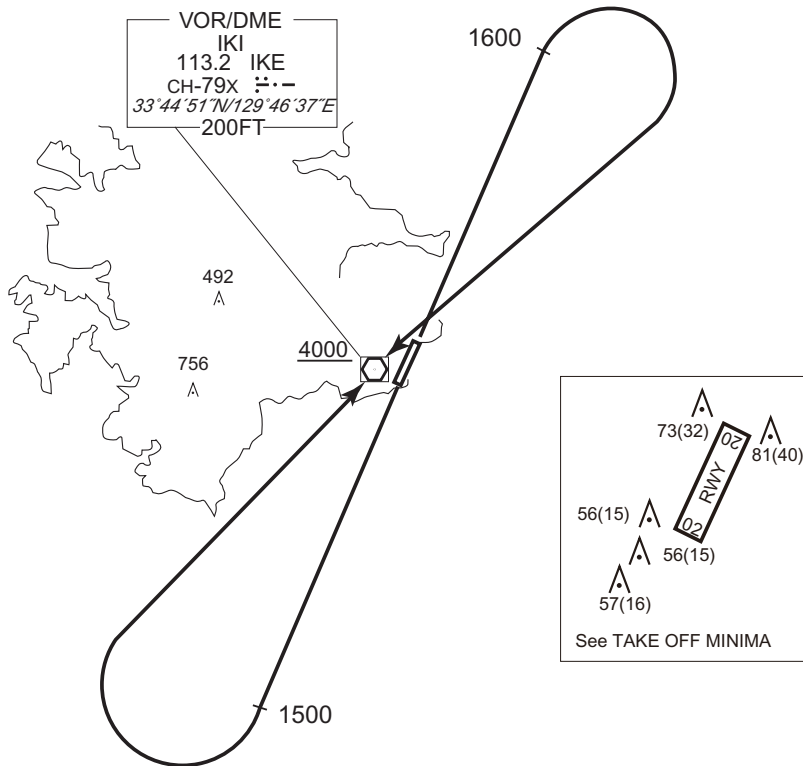
RWY 20 : Climb RWY HDG to 1500FT, turn right,...

...proceed to IKE VOR/DME.

Cross IKE VOR/DME at or above 4000FT.

Note RWY02 : 6.7% climb gradient required up to 600FT.

OBST ALT 299FT located at 0.7NM 360° FM end of RWY02.



CHANGE : OBST.

STANDARD DEPARTURE CHART - INSTRUMENT

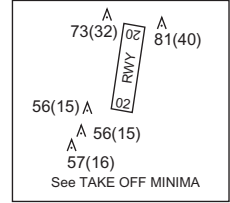
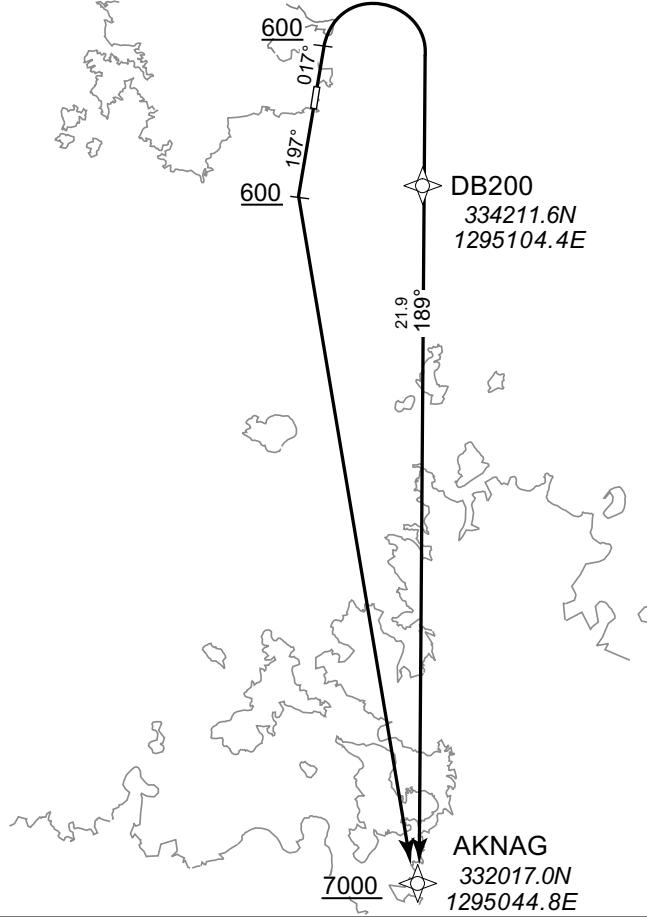
RJDB / IKI RNAV SID

AKNAG ONE DEPARTURE

RNP1

Note GNSS required.

VAR 8°W



RWY 02 : Climb on HDG017° at or above 600FT, turn right direct to DB200, to AKNAG at or above 7000FT.
 RWY 20 : Climb on HDG197° at or above 600FT, turn left direct to AKNAG at or above 7000FT.

Note RWY02 : 6.7% climb gradient required up to 600FT.
 OBST ALT 299FT located at 0.7NM 360° FM end of RWY02.

CHANGE : Navigation Specification(Basic RNP1 → RNP1).

RWY02

Serial Number	Path Descriptor	Waypoint Identifier	Fly Over	Course °M(°T)	Magnetic Variation	Distance (NM)	Turn Direction	Altitude (FT)	Speed (KIAS)	Vertical Angle	Navigation Specification
001	VA	—	—	017 (009.3)	-7.9	—	—	+600	—	—	RNP1
002	DF	DB200	—	—	-7.9	—	R	—	—	—	RNP1
003	TF	AKNAG	—	189 (180.7)	-7.9	21.9	—	+7000	—	—	RNP1

RWY20

Serial Number	Path Descriptor	Waypoint Identifier	Fly Over	Course °M(°T)	Magnetic Variation	Distance (NM)	Turn Direction	Altitude (FT)	Speed (KIAS)	Vertical Angle	Navigation Specification
001	VA	—	—	197 (189.3)	-7.9	—	—	+600	—	—	RNP1
002	DF	AKNAG	—	—	-7.9	—	L	+7000	—	—	RNP1

INTENTIONALLY LEFT BLANK

STANDARD ARRIVAL CHART - INSTRUMENT

RJDB / IKI

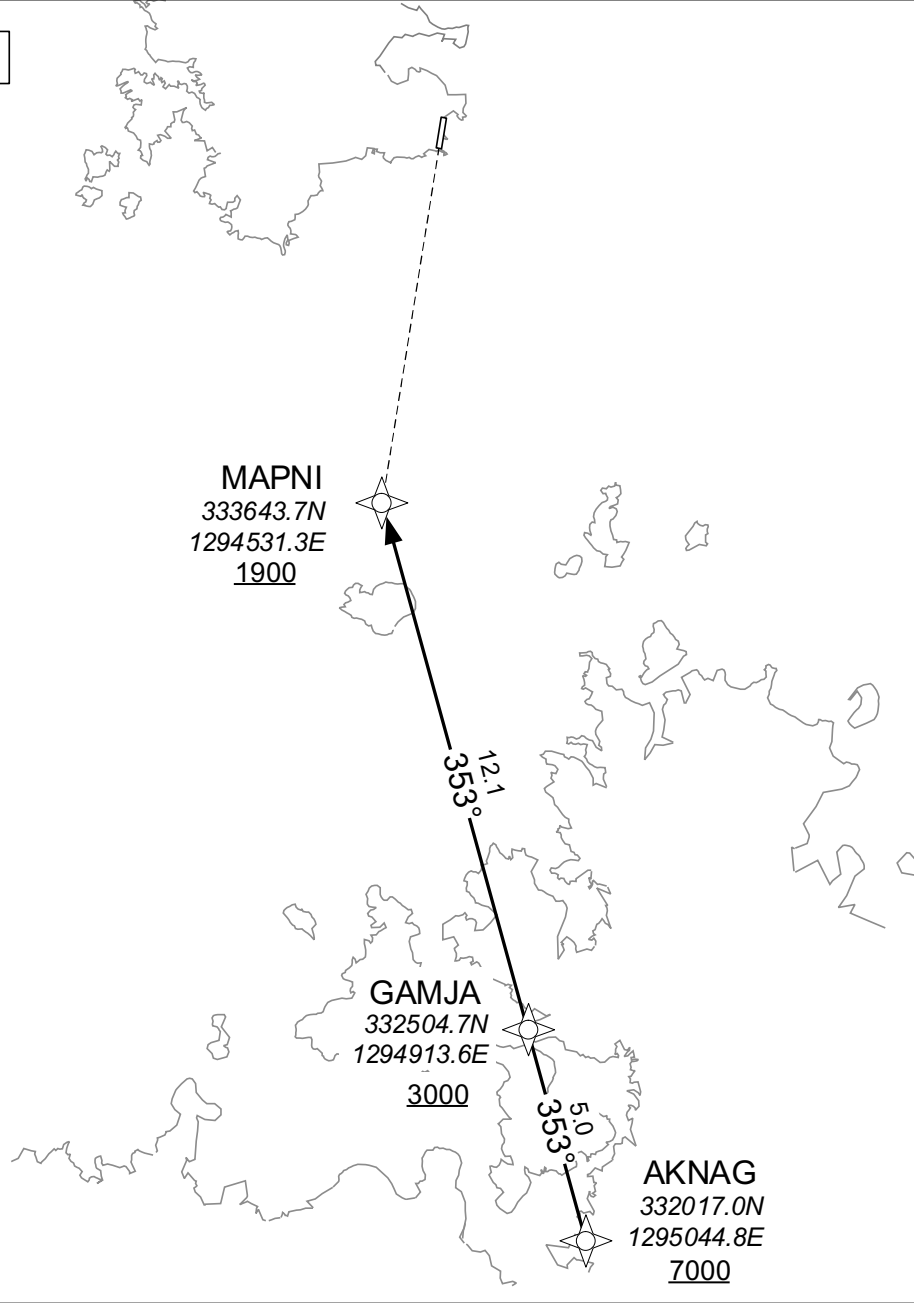
RNAV STAR RWY02

AKNAG ARRIVAL

RNP1

Note GNSS required.

VAR 8°W



CHANGE : Navigation Specification(Basic RNP1 → RNP1).

From AKNAG at or above 7000FT, to GAMJA at or above 3000FT, to MAPNI at or above 1900FT.

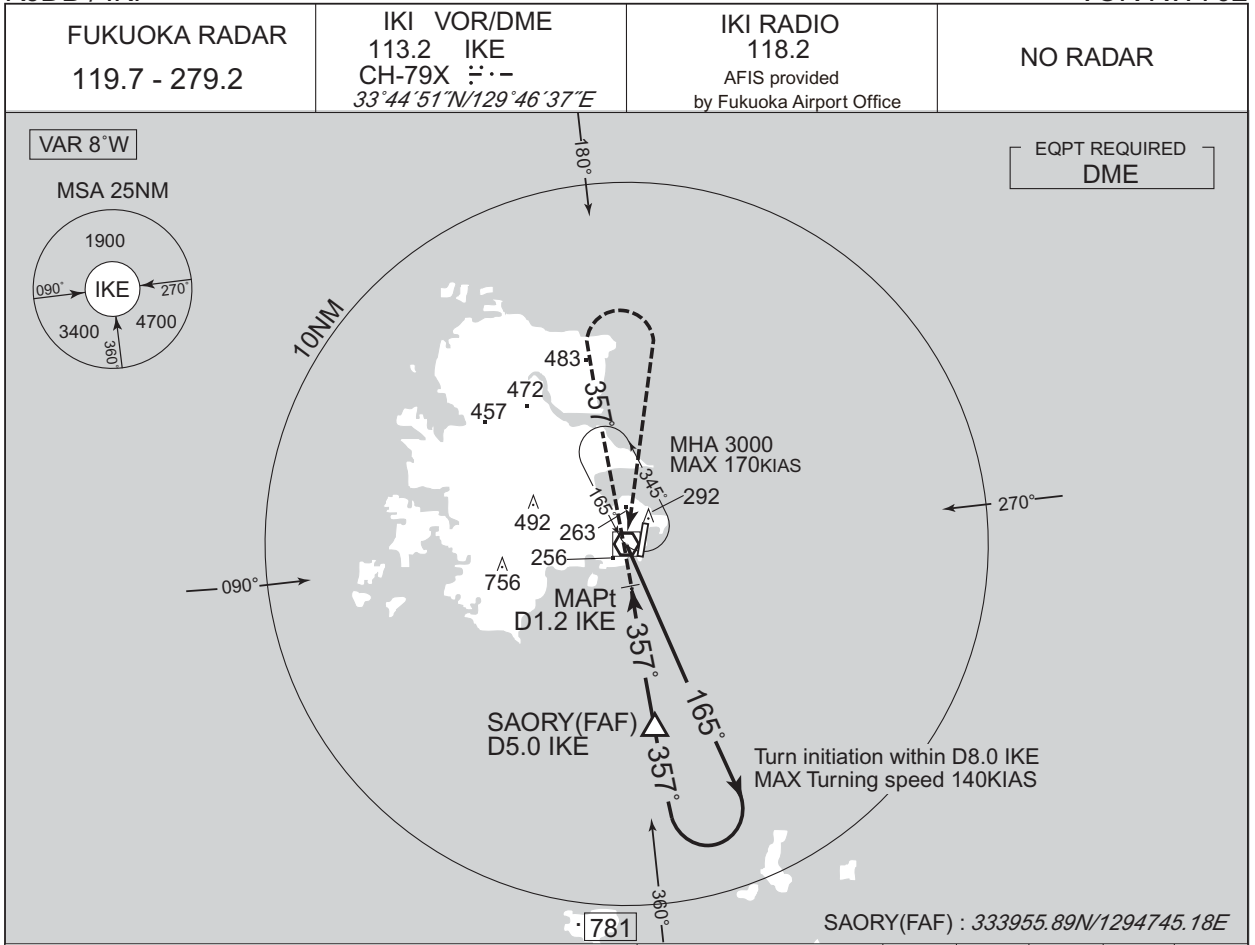
Serial Number	Path Descriptor	Waypoint Identifier	Fly Over	course ° M(°T)	Magnetic Variation	Distance (NM)	Turn Direction	Altitude (FT)	Speed (KIAS)	Vertical Angle	Navigation Specification
001	IF	AKNAG	—	—	-7.9	—	—	+7000	—	—	RNP1
002	TF	GAMJA	—	353 (345.2)	-7.9	5.0	—	+3000	—	—	RNP1
003	TF	MAPNI	—	353 (345.2)	-7.9	12.1	—	+1900	—	—	RNP1

INTENTIONALLY LEFT BLANK

INSTRUMENT APPROACH CHART

RJDB / IKI

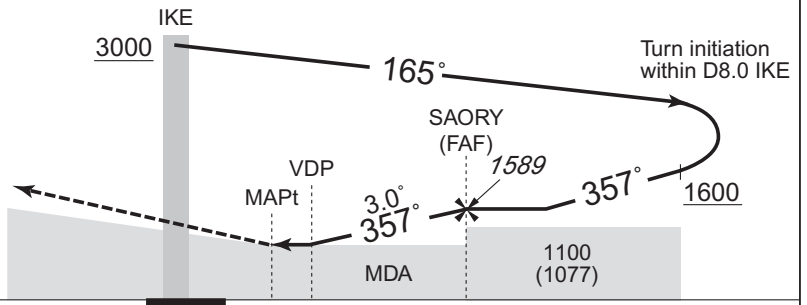
VOR RWY02



CHANGE : VAR. PROC course. HLDG course. Missed APCH course. MSA(BTN 090° and 180°)

NM to IKE	MAPt	2	3	4	FAF
ALT (3.0° APCH Path)	-	633	952	1270	1589

MISSED APPROACH
Climb to 1500FT via IKE R357, turn right, direct to IKE VOR/DME and hold at 3000FT. Contact FUKUOKA RADAR.



Timing not authorized for defining the MAPt.

DME to IKE	0.2	1.2	1.5	5.0
NM to THR	0	1.0	1.2	4.8

MINIMA	THR elev. 23	AD elev. 41		
CAT	CIRCLING			
	MDA(H)	CMV	MDA(H)	VIS
A	440 (417)	1500	660 (619)	1600
B				
C	-	-	-	-
D				

INSTRUMENT APPROACH CHART

RJDB / IKI

VOR RWY20

FUKUOKA RADAR
119.7 - 279.2

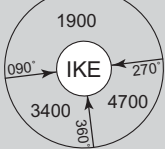
IKI VOR/DME
113.2 IKE
CH-79X ---
 $33^{\circ}44'51"N/129^{\circ}46'37"E$

IKI RADIO
118.2
AFIS provided
by Fukuoka Airport Office

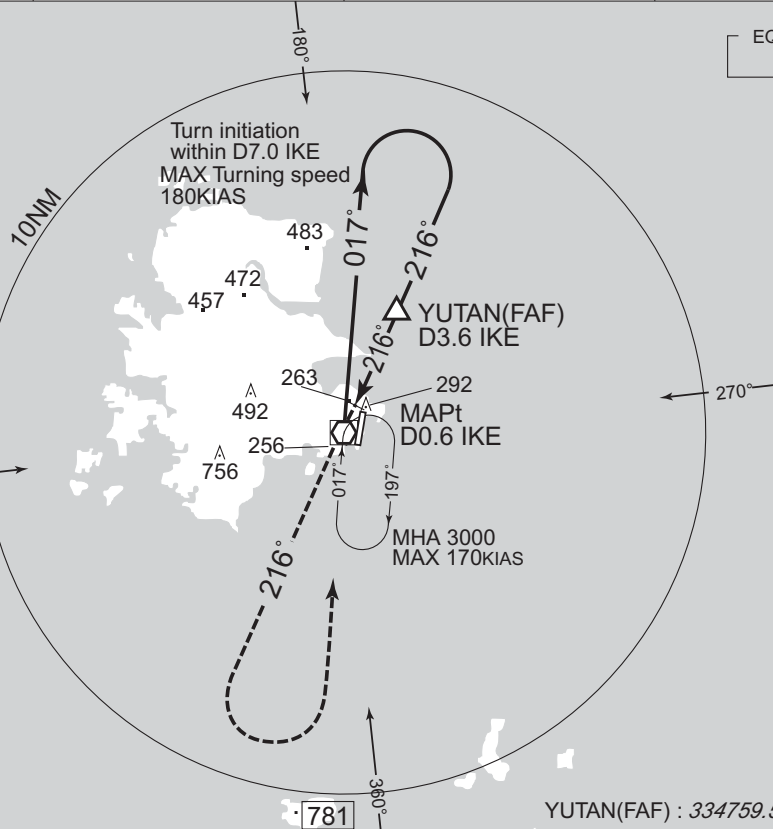
NO RADAR

VAR 8°W

MSA 25NM



EQPT REQUIRED
DME



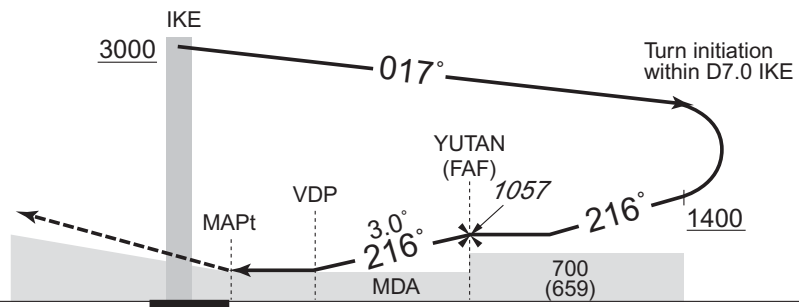
YUTAN(FAF) : $33^{\circ}47'59.59"N/129^{\circ}48'37.31"E$

NM to IKE	MAPt	3	FAF
ALT (3.0° APCH Path)	-	881	1057

MISSED APPROACH

Climb to 1500FT via IKE R216, turn left, direct to IKE VOR/DME and hold at 3000FT. Contact FUKUOKA RADAR.

Timing not authorized for defining the MAPt.



DME to IKE	0.6	2.3	3.6
NM to THR	0	1.7	3.0

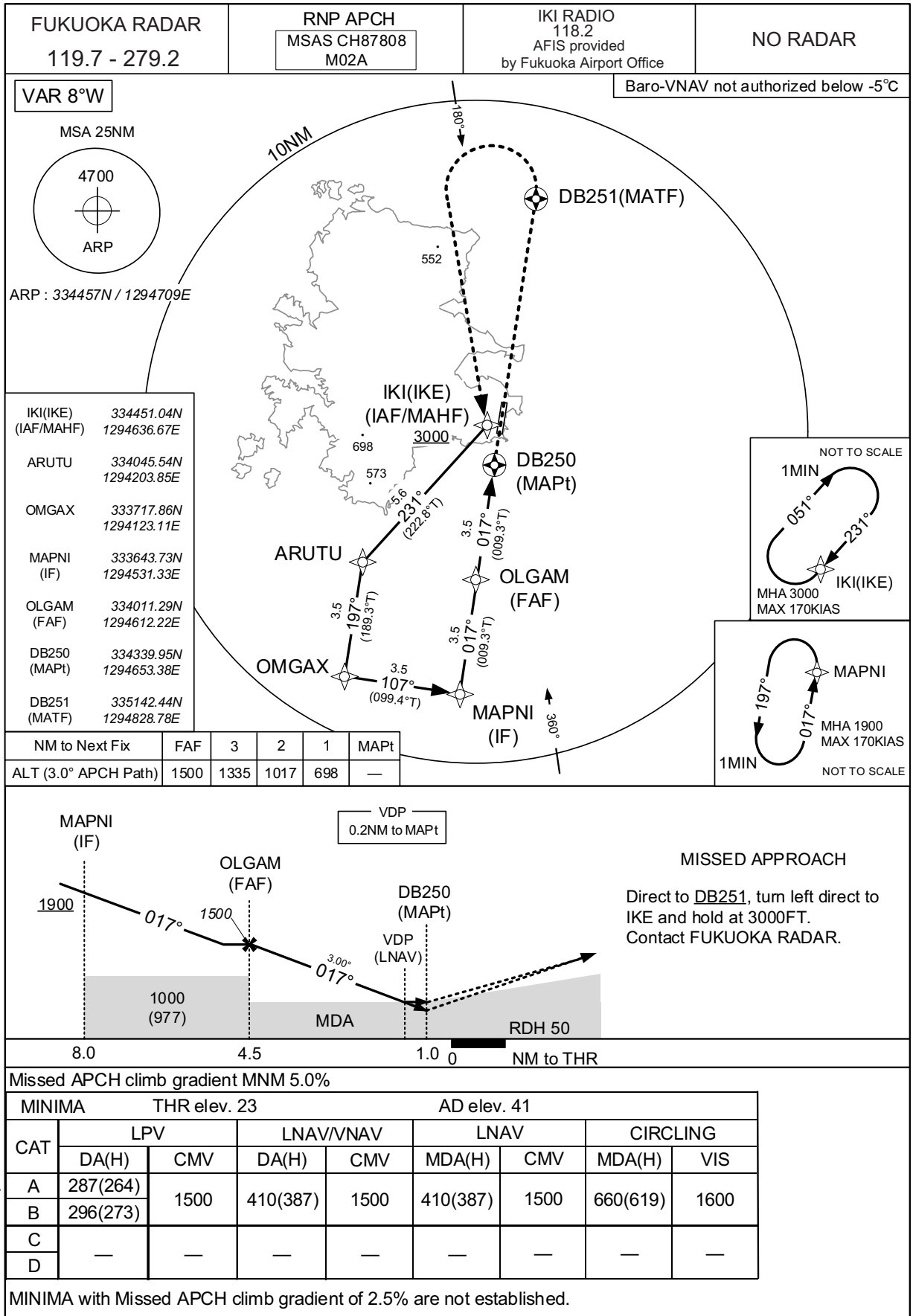
MINIMA		THR elev. 52	AD elev. 41	
CAT			CIRCLING	
	MDA(H)	CMV	MDA(H)	VIS
A	610 (569)	1500	660 (619)	1600
B				
C	-	-	-	-
D	-	-	-	-

CHANGE : VAR. PROC course. HLDG course. Missed APCH course. MSA(BTN 090° and 180°)

INSTRUMENT APPROACH CHART

RJDB / IKI

RNP RWY02



INSTRUMENT APPROACH CHART

RJDB / IKI

RNP RWY02

FAS DATA BLOCK

Operation type	0	LTP/FTP ellipsoidal height	+00382
SBAS service provider identifier	2	FPAP latitude	334531.5680N
Airport identifier	RJDB	FPAP longitude	1294715.4170E
Runway	02	Threshold crossing height	00015.0
Approach performance designator	0	TCH units selector	1
Route indicator		Glide path angle	03.00
Reference path data selector	0	Course width at threshold	105.00
Reference path ID	M02A	∠ length offset	0496
LTP/FTP latitude	334437.2865N	HAL	40.0
LTP/FTP longitude	1294704.7065E	VAL	50.0
CRC remainder	5C72DF61		

Required additional data

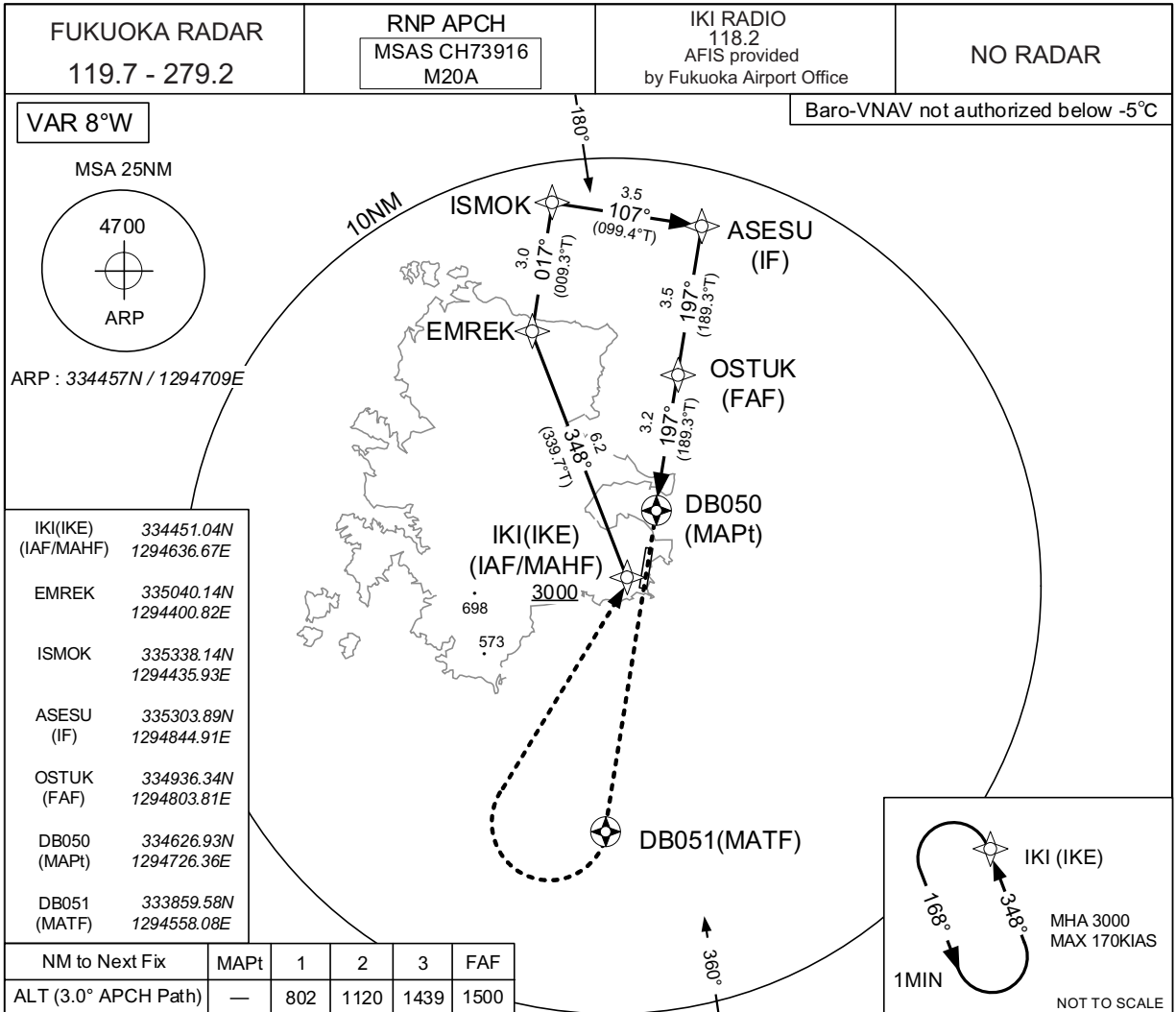
LTP/FTP orthometric height	6.7
----------------------------	-----

CHANGE : Description of FAS DATA BLOCK ITEM(CRC remainder).

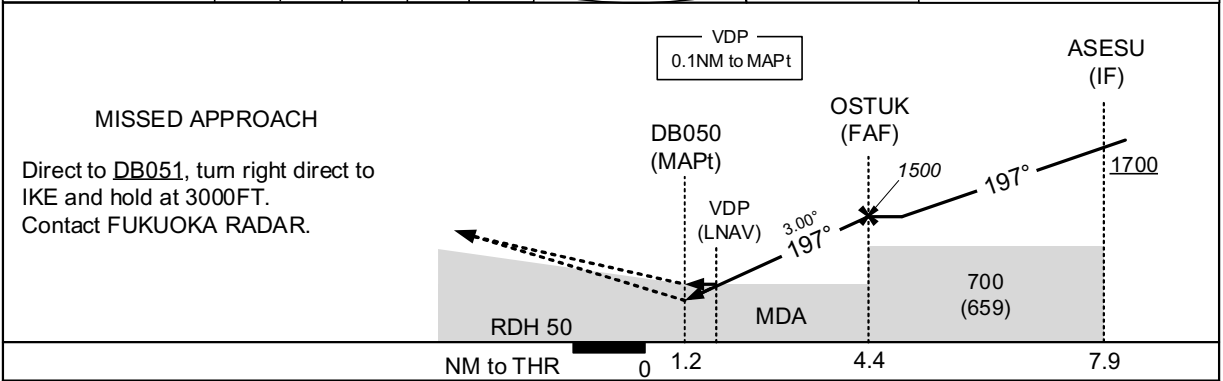
INSTRUMENT APPROACH CHART

RJDB / IKI

RNP RWY20



CHANGE : ALT restriction at ISMOK abolished. ALT restriction at ASESU.



MINIMA		THR elev. 52		AD elev. 41				
CAT	LPV		LNAV/VNAV		LNAV		CIRCLING	
	DA(H)	CMV	DA(H)	CMV	MDA(H)	CMV	MDA(H)	VIS
A	458(406)	1500	500(448)	1500	500(459)	1500	660(619)	1600
B	467(415)							
C	—	—	—	—	—	—	—	—
D	—	—	—	—	—	—	—	—

INSTRUMENT APPROACH CHART

RJDB / IKI

RNP RWY20

FAS DATA BLOCK

Operation type	0	LTP/FTP ellipsoidal height	+00471
SBAS service provider identifier	2	FPAP latitude	334421.4340N
Airport identifier	RJDB	FPAP longitude	1294701.5790E
Runway	20	Threshold crossing height	00015.0
Approach performance designator	0	TCH units selector	1
Route indicator		Glide path angle	03.00
Reference path data selector	0	Course width at threshold	105.00
Reference path ID	M20A	∠ length offset	0496
LTP/FTP latitude	334515.7155N	HAL	40.0
LTP/FTP longitude	1294712.2885E	VAL	50.0
CRC remainder	660F91B2		

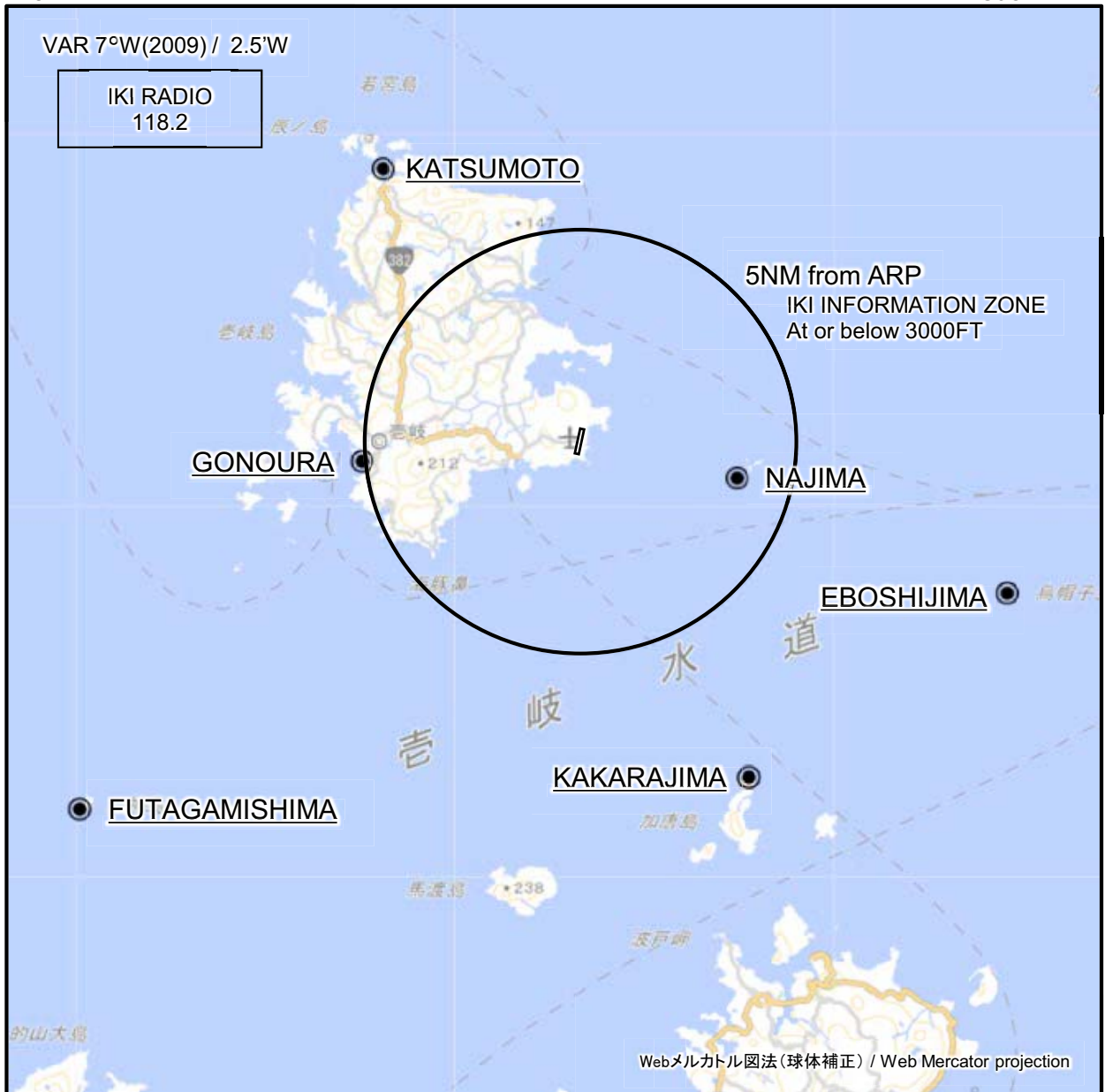
Required additional data

LTP/FTP orthometric height	15.6
----------------------------	------

CHANGE : Description of FAS DATA BLOCK ITEM(CRC remainder).

RJDB / IKI

Visual REP



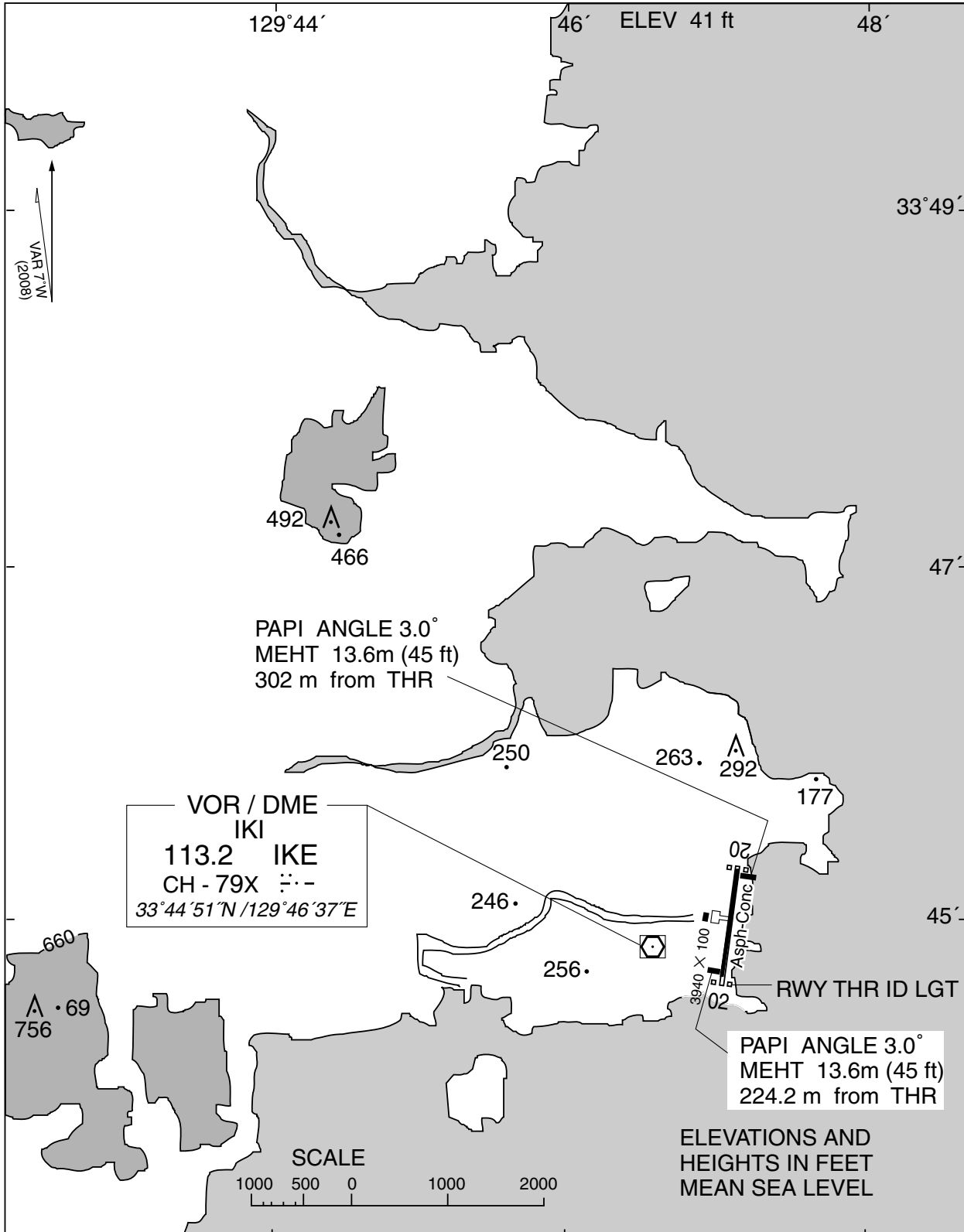
※図中に標高を示す数字がある場合、単位はメートル(m)である。The unit of measurement used to express elevation is meter(m).

CHANGE : Call sign(REMOTE→RADIO):

Call sign	BRG / DIST from ARP	Remarks
勝本 Katsumoto	324°T / 7.9NM	漁港 Harbor
郷ノ浦 Gonoura	265°T / 5.2NM	漁港 Harbor
名島 Najima	103°T / 3.7NM	灯台 Lighthouse
烏帽子島 Eboshijima	110°T / 10.5NM	灯台 Lighthouse
加唐島 Kakarajima	154°T / 8.8NM	灯台 Lighthouse
二神島 Futagamishima	233°T / 14.5NM	灯台 Lighthouse

RJDB / IKI

LDG CHART



RJDB / IKI

Minimum Vectoring Altitude CHART

