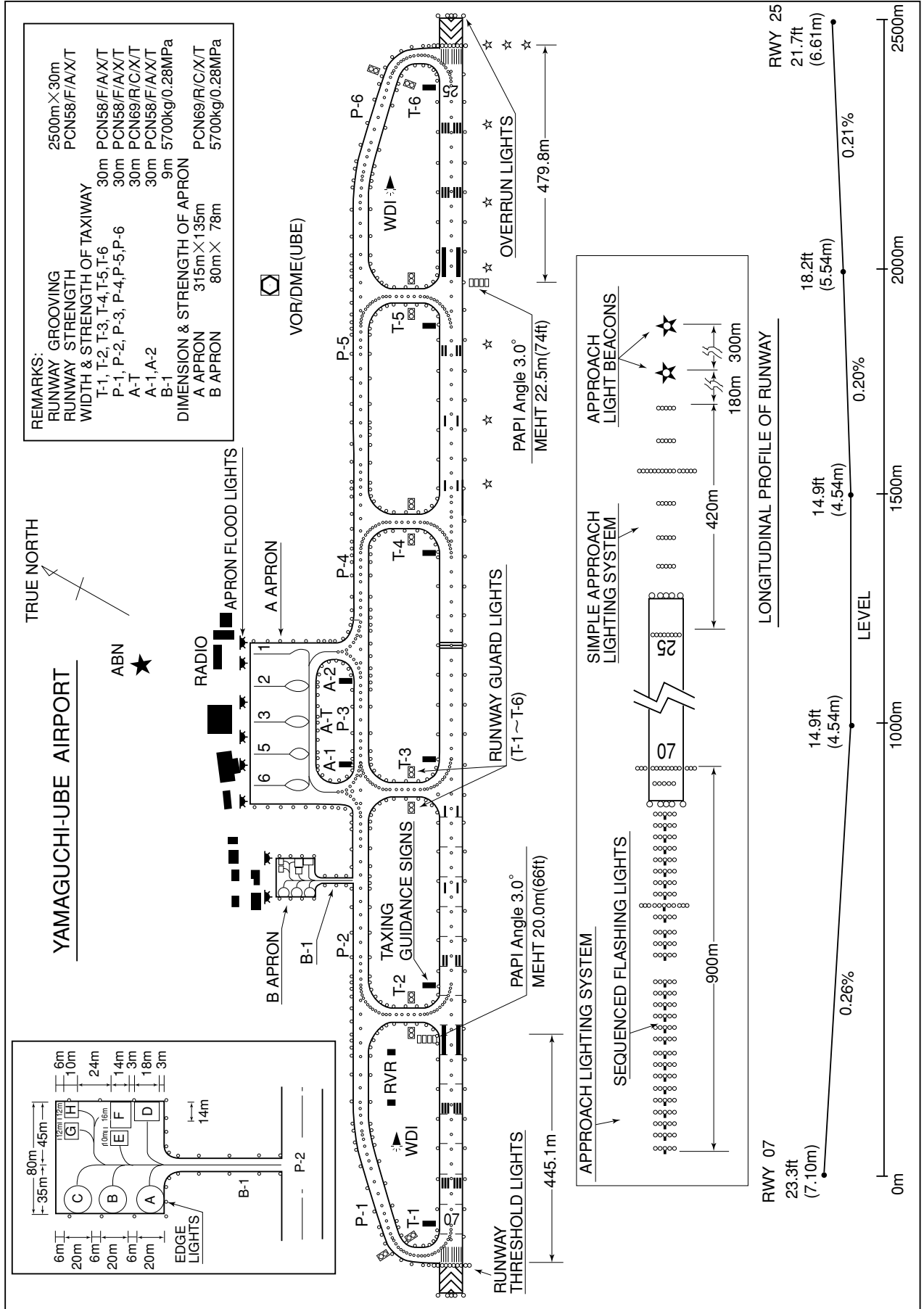


RJDC / YAMAGUCHI-UBE

AD CHART



INTENTIONALLY LEFT BLANK

STANDARD DEPARTURE CHART - INSTRUMENT

RJDC / YAMAGUCHI-UBE

SID

UBE REVERSAL TWO DEPARTURE

RWY07 : Climb RWY HDG to 500FT, turn right HDG178°...

RWY25 : Climb RWY HDG to 500FT, turn left HDG088°...

...to intercept and proceed via UBE R133 to 4000FT, turn right, direct to UBE VOR/DME.

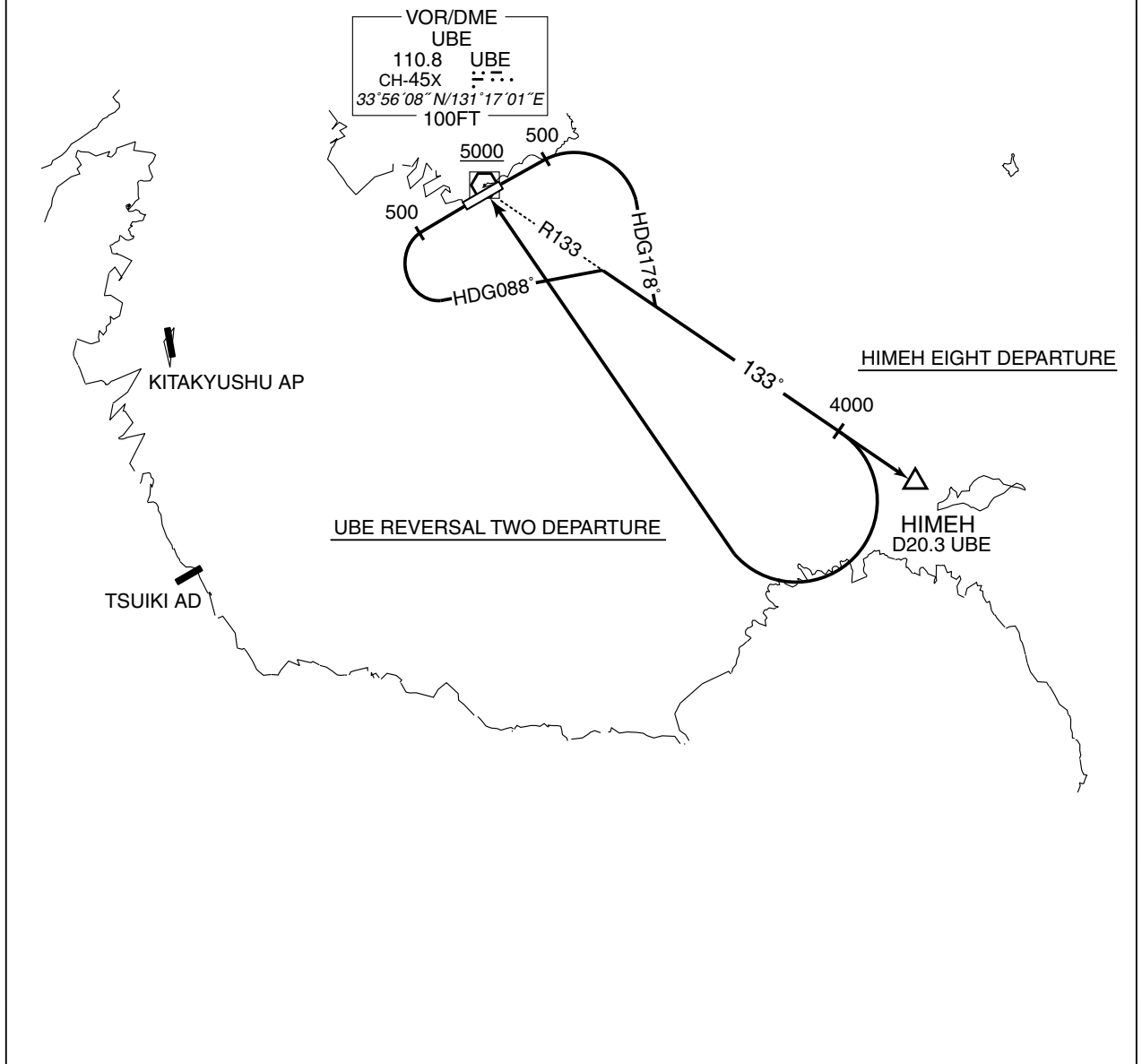
Cross UBE VOR/DME at or above 5000FT.

HIMEH EIGHT DEPARTURE

RWY07 : Climb RWY HDG to 500FT, turn right HDG178°...

RWY25 : Climb RWY HDG to 500FT, turn left HDG088°...

...to intercept and proceed via UBE R133 to HIMEH.



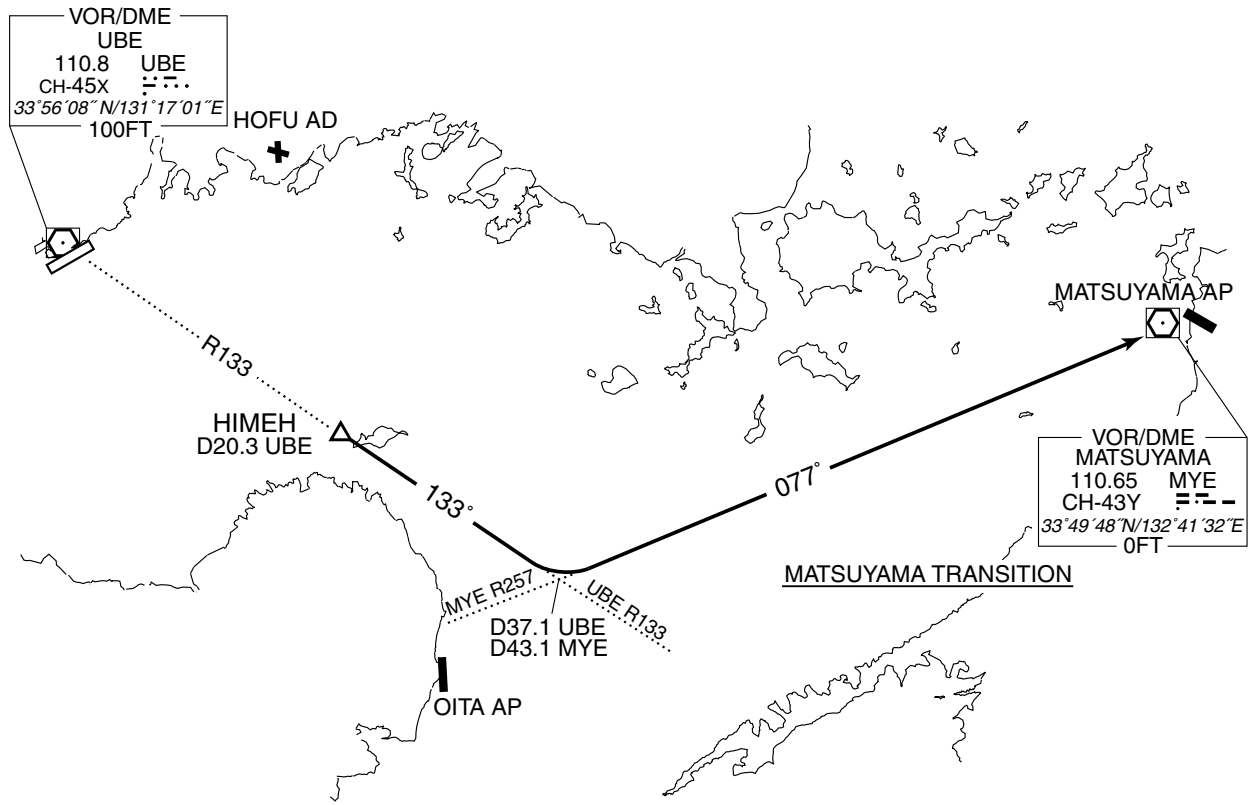
STANDARD DEPARTURE CHART - INSTRUMENT

RJDC / YAMAGUCHI-UBE

TRANSITION

MATSUYAMA TRANSITION

From over HIMEH, via UBE R133 to intercept and proceed via MYE R257 to MYE VOR/DME.



STANDARD DEPARTURE CHART - INSTRUMENT

RJDC / YAMAGUCHI-UBE

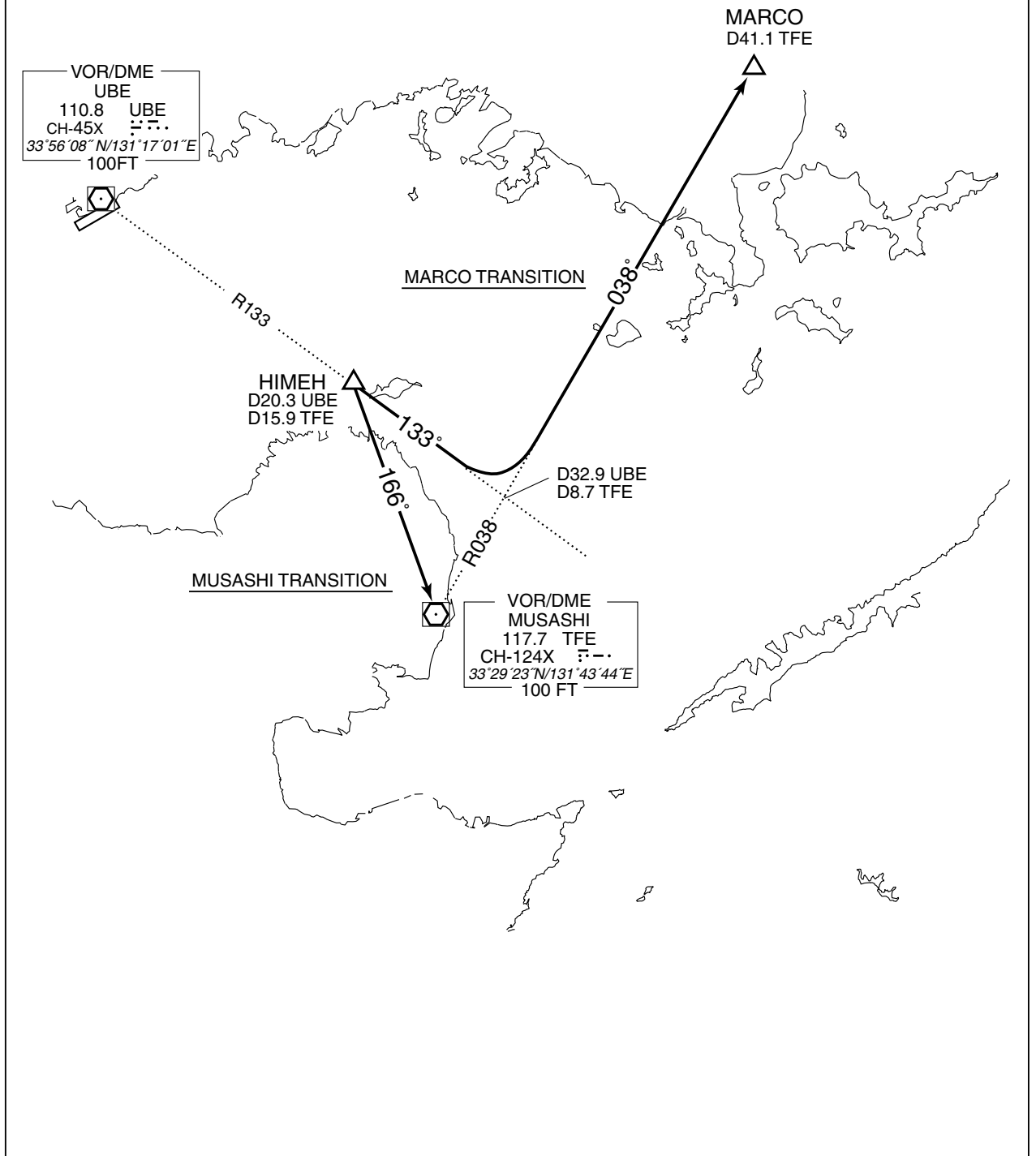
TRANSITION

MARCO TRANSITION

From over HIMEH, via UBE R133 to intercept and proceed via TFE R038 to MARCO.

MUSASHI TRANSITION

From over HIMEH, via TFE R346 to TFE VOR/DME.



STANDARD DEPARTURE CHART - INSTRUMENT

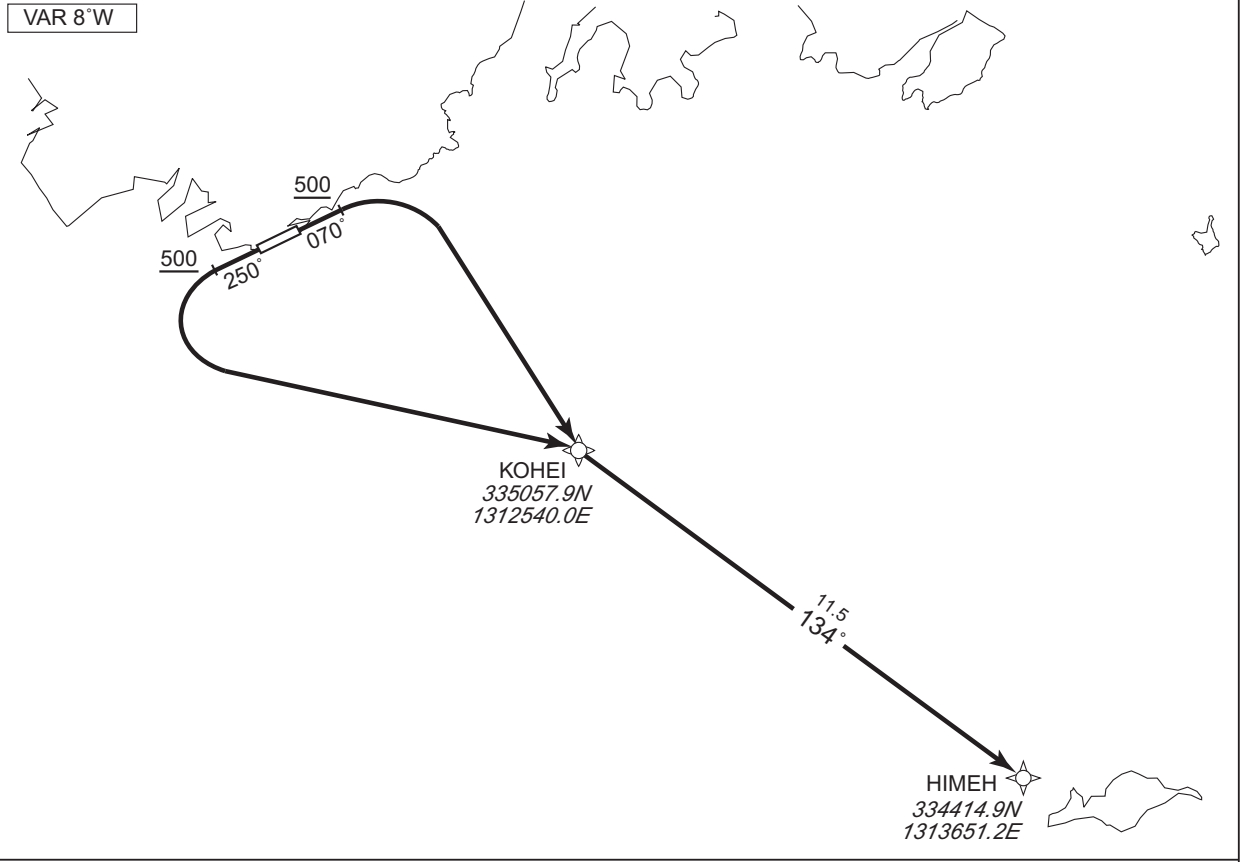
RJDC / YAMAGUCHI-UBE

RNAV SID

HIMESHIMA TWO DEPARTURE

RNP1

Note GNSS required.



RWY07 : Climb on HDG 070° at or above 500FT, turn right direct to KOHEI, to HIMEH.
RWY25 : Climb on HDG 250° at or above 500FT, turn left direct to KOHEI, to HIMEH.

CHANGE : PROC renamed. VAR. PROC Course.

RWY07

Serial Number	Path Descriptor	Waypoint Identifier	Fly Over	Course °M(°T)	Magnetic Variation	Distance (NM)	Turn Direction	Altitude (FT)	Speed (KIAS)	Vertical Angle	Navigation Specification
001	VA	—	—	070 (062.2)	-8.2	—	—	+500	—	—	RNP1
002	DF	KOHEI	—	—	-8.2	—	R	—	—	—	RNP1
003	TF	HIMEH	—	134 (125.8)	-8.2	11.5	—	—	—	—	RNP1

RWY25

Serial Number	Path Descriptor	Waypoint Identifier	Fly Over	Course °M(°T)	Magnetic Variation	Distance (NM)	Turn Direction	Altitude (FT)	Speed (KIAS)	Vertical Angle	Navigation Specification
001	VA	—	—	250 (242.2)	-8.2	—	—	+500	—	—	RNP1
002	DF	KOHEI	—	—	-8.2	—	L	—	—	—	RNP1
003	TF	HIMEH	—	134 (125.8)	-8.2	11.5	—	—	—	—	RNP1

STANDARD DEPARTURE CHART - INSTRUMENT

RJDC / YAMAGUCHI-UBE

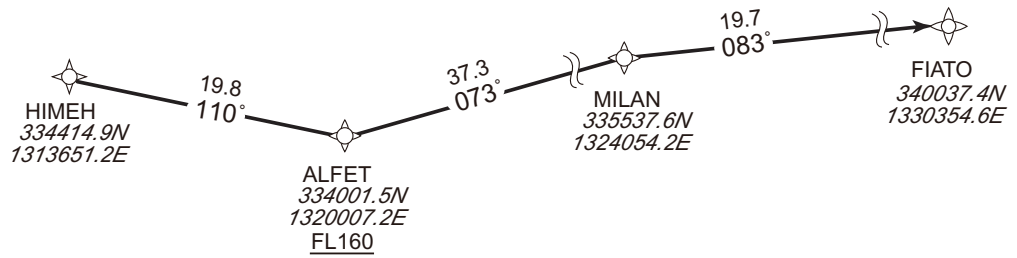
RNAV TRANSITION

ABARTO TRANSITION

RNP1

Note GNSS required.

VAR 8°W

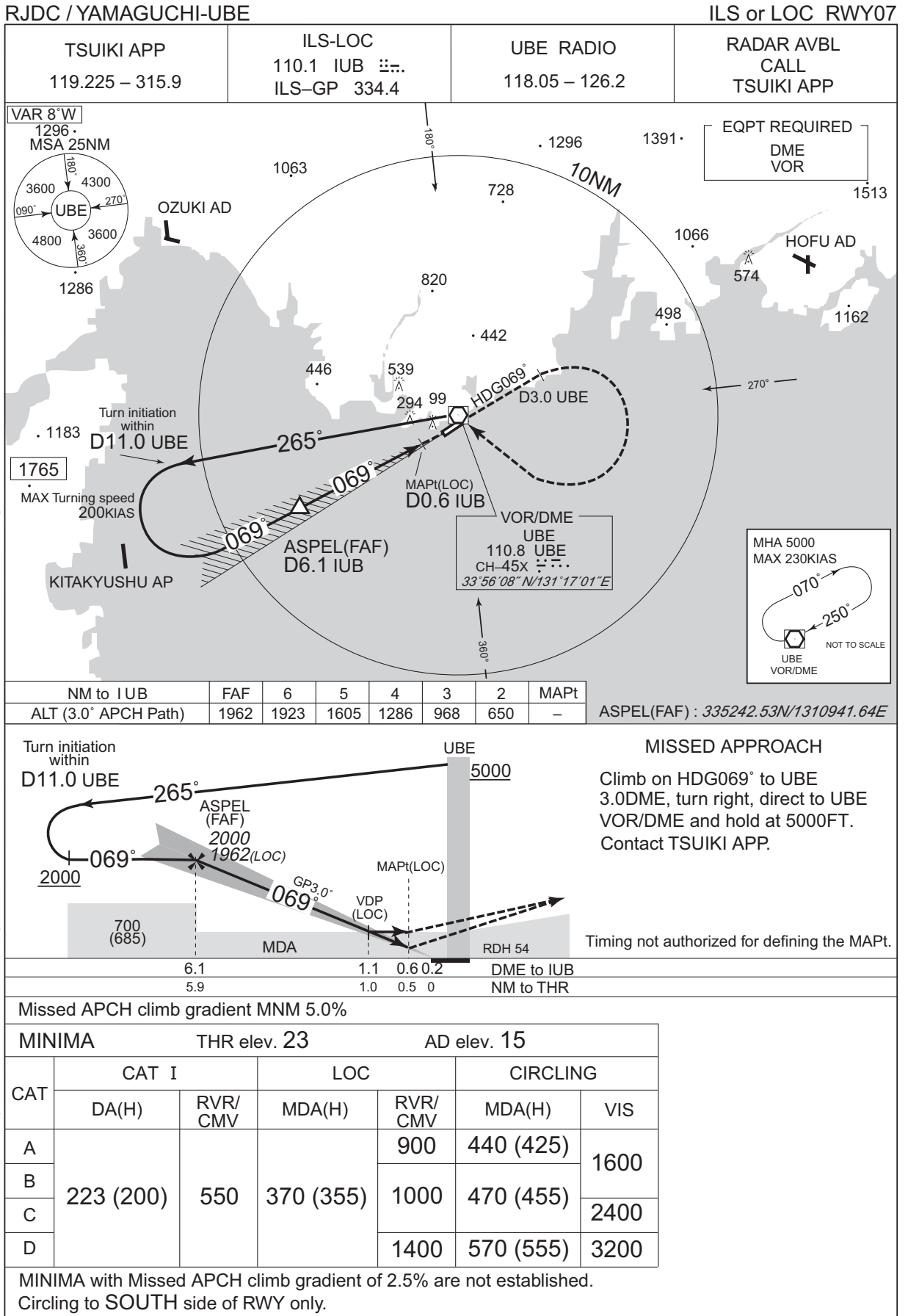


From HIMEH, to ALFET at or above FL160, to MILAN, to FIATO.

CHANGE : PROC Course. Navigation Specification. VAR.

Serial Number	Path Descriptor	Waypoint Identifier	Fly Over	Course °M(°T)	Magnetic Variation	Distance (NM)	Turn Direction	Altitude (FT)	Speed (KIAS)	Vertical Angle	Navigation Specification
001	IF	HIMEH	—	—	-8.2	—	—	—	—	—	RNP1
002	TF	ALFET	—	110 (102.2)	-8.2	19.8	—	+FL160	—	—	RNP1
003	TF	MILAN	—	073 (065.1)	-8.2	37.3	—	—	—	—	RNP1
004	TF	FIATO	—	083 (075.2)	-8.2	19.7	—	—	—	—	RNP1

INSTRUMENT APPROACH CHART



CHANGE : VAR. MSA(BTN 180° and 270°). Missed APCH PROC. Missed APCH climb gradient MNM added.

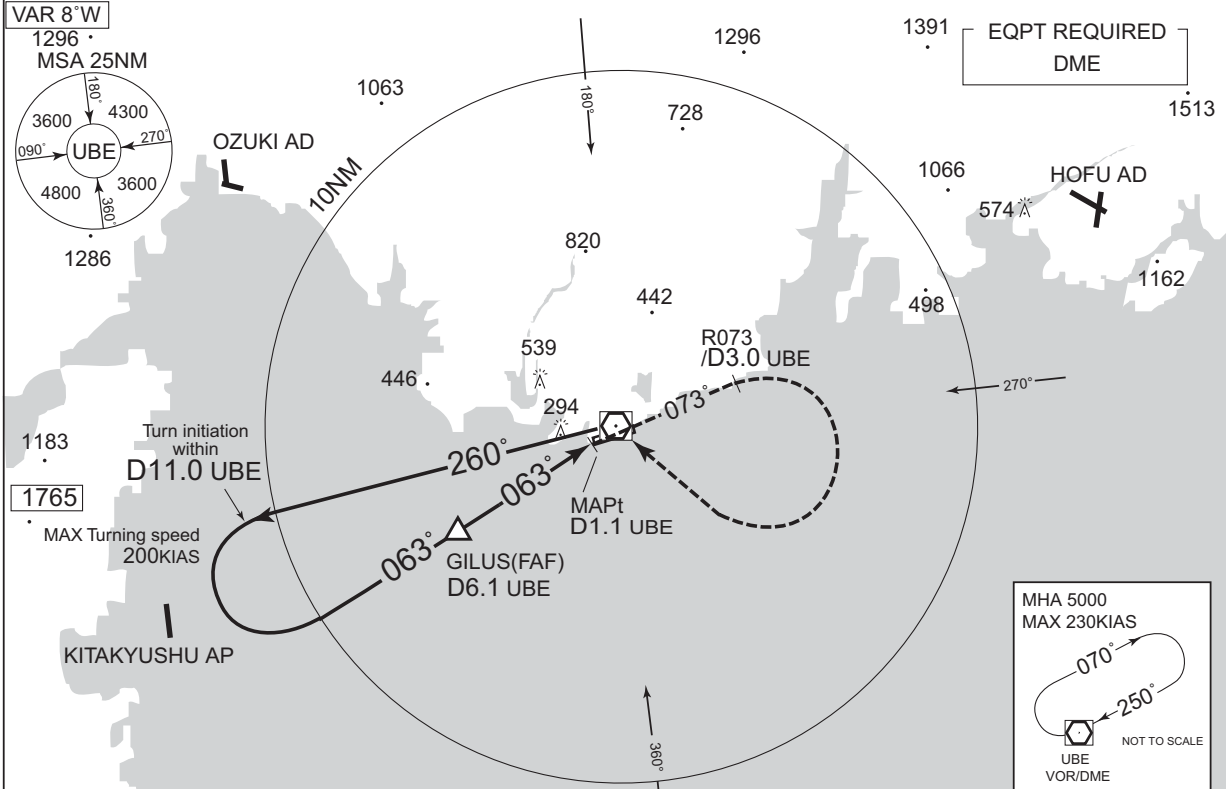
INSTRUMENT APPROACH CHART

RJDC / YAMAGUCHI-UBE

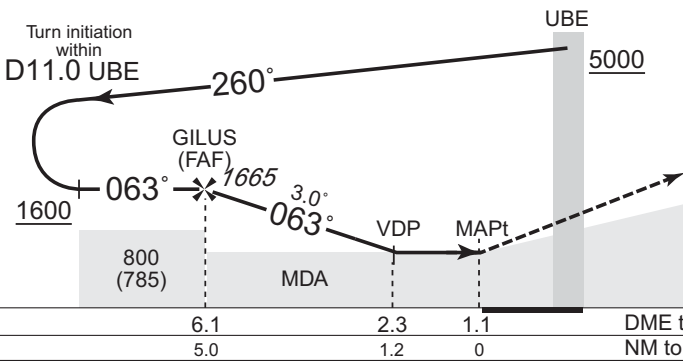
VOR RWY07

TSUIKI APP 119.225 – 315.9	UBE VOR/DME 110.8 UBE CH-45X 33°56'08"N/131°17'01"E	UBE RADIO 118.05 – 126.2	RADAR AVBL CALL TSUIKI APP
-------------------------------	-----------------------------------------------------------	-----------------------------	----------------------------------

CHANGE : VAR. MSA(BTN 180° and 270°). Missed APCH PROC. Missed APCH climb gradient MNM added.



NM to UBE	FAF	6	5	4	3	MAPt
ALT (3.0° APCH Path)	1665	1646	1328	1009	691	-



MISSED APPROACH
 Climb via UBE R073 to 3.0DME, turn right, direct to UBE VOR/DME and hold at 5000FT. Contact TSUIKI APP.

Timing not authorized for defining the MAPt.

Missed APCH climb gradient MNM 5.0%

MINIMA	THR elev. 23	AD elev. 15	
CAT	CIRCLING		
	MDA(H)	RVR/CMV	
A	900	450 (435)	
B	450 (435)	1000	
C			470 (455)
D			570 (555)
		1600	
		2400	
		3200	

MINIMA with Missed APCH climb gradient of 2.5% are not established.
 Circling to SOUTH side of RWY only.

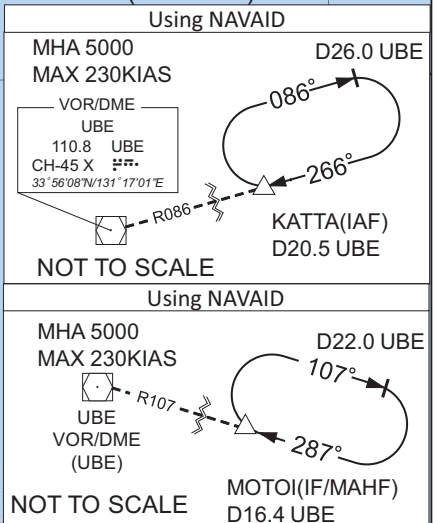
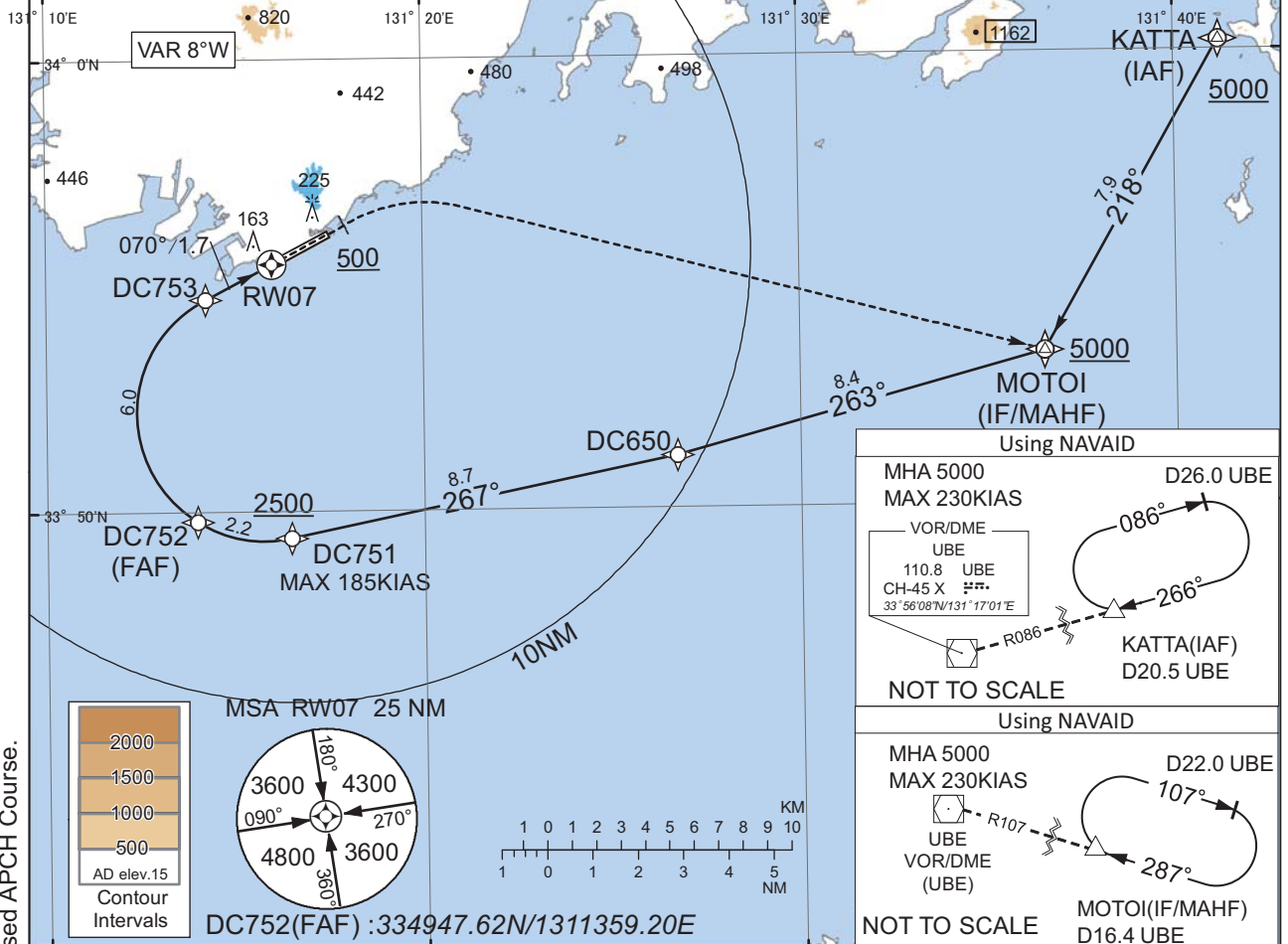
INSTRUMENT APPROACH CHART

RJDC / YAMAGUCHI-UBE

RNP RWY07(AR)

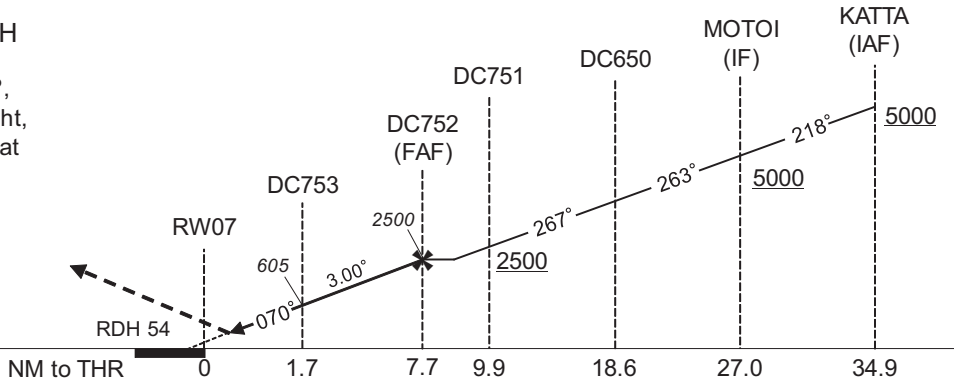
TSUIKI APP 119.225 - 315.9	RNP AR RF required.	UBE RADIO 118.05 - 126.2	RADAR AVBL CALL TSUIKI APP
-------------------------------	------------------------	-----------------------------	----------------------------------

For uncompensated Baro-VNAV systems, procedure not authorized below -5°C / above 45°C



MISSED APPROACH

From RW07 on track 070°, at or above 500FT turn right, direct to MOTOI and hold at 5000FT. Contact TSUIKI APP.



MINIMA	THR elev. 23	AD elev. 15
CAT	RNP 0.30	
	DA(H)	RVR/CMV
A	-	-
B	-	-
C	324(301)	1000
D	-	1400

Authorization Required

CHANGE : VAR. PROC Course. MSA(BTN 180° and 270°). Missed APCH Course.

INSTRUMENT APPROACH CHART

RJDC / YAMAGUCHI-UBE

RNP RWY07(AR)

Coding Table

Serial Number	Path Descriptor	Waypoint Identifier	Fly Over	Course °M(°T)	Magnetic Variation	Distance (NM)	Turn Direction	Altitude (FT)	Speed (KIAS)	VPA/RDH (°/FT)	RNP Value
001	IF	KATTA	-	-	-8.2	-	-	+5000	-	-	-
002	TF	MOTOI	-	218 (209.7)	-8.2	7.9	-	+5000	-	-	1.0
003	TF	DC650	-	263 (254.7)	-8.2	8.4	-	-	-	-	1.0
004	TF	DC751	-	267 (258.4)	-8.2	8.7	-	+2500	-185	-	1.0
005	RF Center: DCRF1 r=2.83NM	DC752	-	-	-8.2	2.2	R	2500	-	-	1.0
006	RF Center: DCRF1 r=2.83NM	DC753	-	-	-8.2	6.0	R	605	-	-3.00	0.3
007	TF	RW07	Y	070 (062.1)	-8.2	1.7	-	77	-	-3.00/54	0.3
008	FA	-	-	070 (062.1)	-8.2	-	-	+500	-	-	1.0
009	DF	MOTOI	-	-	-8.2	-	R	5000	-	-	1.0

Waypoint Coordinates

Waypoint Identifier	Coordinates	RF Arc Center Identifier	Coordinates
KATTA	340013.04N / 1314112.84E	DCRF1	335211.33N / 1311547.68E
MOTOI	335323.26N / 1313630.85E		
DC650	335109.96N / 1312644.12E		
DC751	334924.96N / 1311628.63E		
DC752	334947.62N / 1311359.20E		
DC753	335442.44N / 1311414.70E		
RW07	335528.81N / 1311600.47E		

CHANGE : PROC Course. VAR.

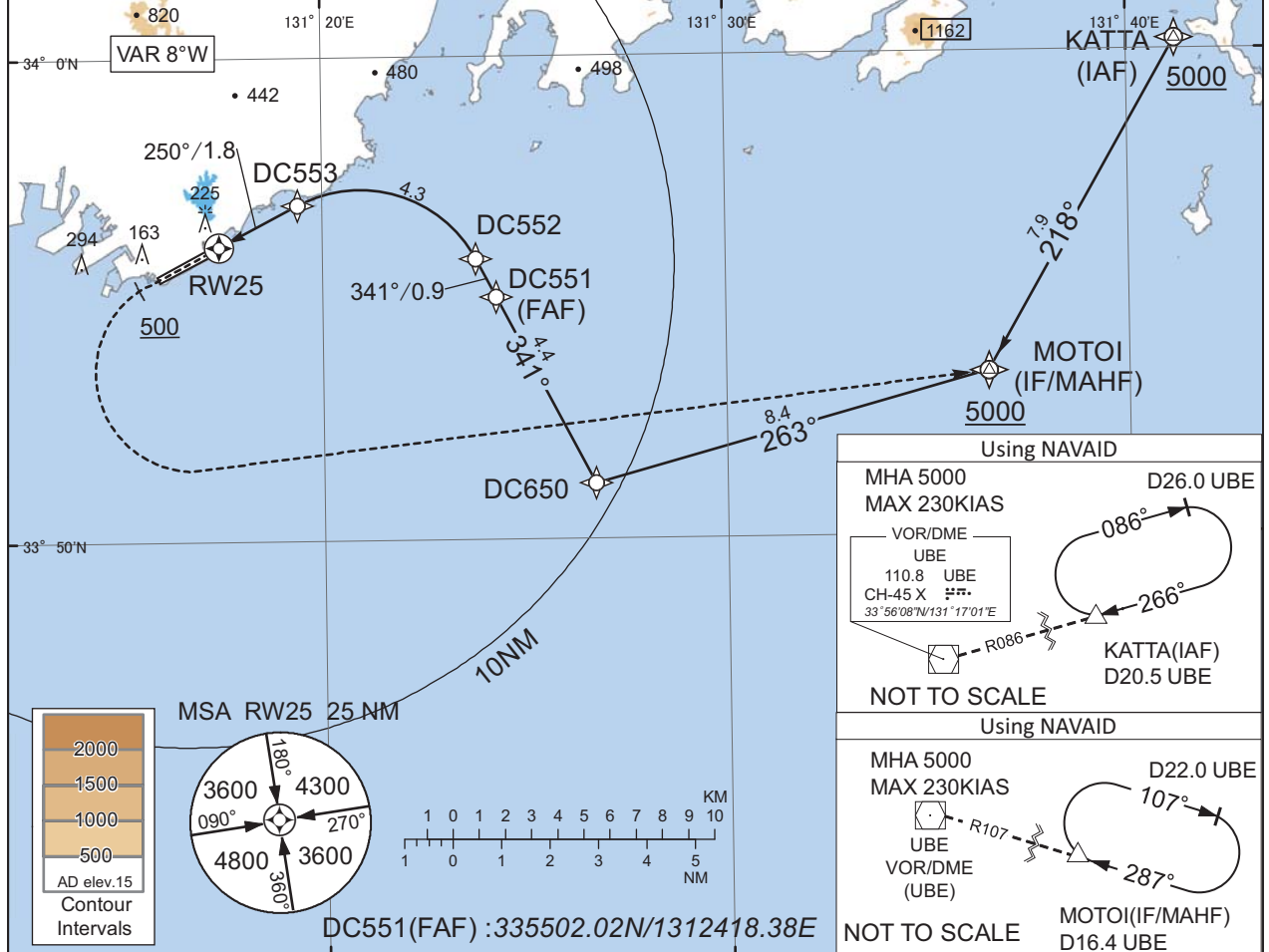
INSTRUMENT APPROACH CHART

RJDC / YAMAGUCHI-UBE

RNP RWY25(AR)

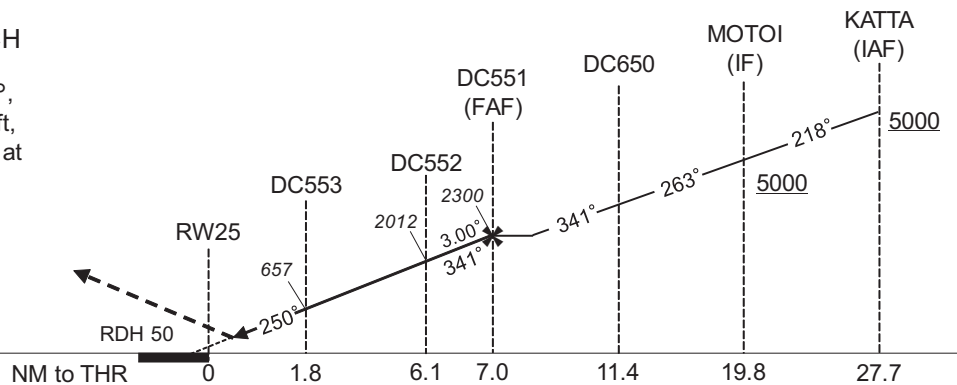
TSUIKI APP 119.225 - 315.9	RNP AR RF required.	UBE RADIO 118.05 - 126.2	RADAR AVBL CALL TSUIKI APP
-------------------------------	------------------------	-----------------------------	----------------------------------

For uncompensated Baro-VNAV systems, procedure not authorized below -5°C / above 45°C



MISSED APPROACH

From RW25 on track 250°, at or above 500FT turn left, direct to MOTOI and hold at 5000FT. Contact TSUIKI APP.



MINIMA	THR elev. 22	AD elev. 15
CAT	RNP 0.30	
	DA(H)	CMV
A	-	-
B	-	-
C	386(364)	1400
D		1600

Authorization Required

CHANGE : VAR. PROC Course. MSA(BTN 180° and 270°). Missed APCH Course.

INSTRUMENT APPROACH CHART

RJDC / YAMAGUCHI-UBE

RNP RWY25(AR)

Coding Table

Serial Number	Path Descriptor	Waypoint Identifier	Fly Over	Course °M(°T)	Magnetic Variation	Distance (NM)	Turn Direction	Altitude (FT)	Speed (KIAS)	VPA/RDH (°/FT)	RNP Value
001	IF	KATTA	-	-	-8.2	-	-	+5000	-	-	-
002	TF	MOTOI	-	218 (209.7)	-8.2	7.9	-	+5000	-	-	1.0
003	TF	DC650	-	263 (254.7)	-8.2	8.4	-	-	-	-	1.0
004	TF	DC551	-	341 (332.5)	-8.2	4.4	-	2300	-	-	1.0
005	TF	DC552	-	341 (332.5)	-8.2	0.9	-	2012	-	-3.00	0.3
006	RF Center: DCRF2 r=2.71NM	DC553	-	-	-8.2	4.3	L	657	-	-3.00	0.3
007	TF	RW25	Y	250 (242.2)	-8.2	1.8	-	72	-	-3.00/50	0.3
008	FA	-	-	250 (242.2)	-8.2	-	-	+500	-	-	1.0
009	DF	MOTOI	-	-	-8.2	-	L	5000	-	-	1.0

Waypoint Coordinates

Waypoint Identifier	Coordinates	RF Arc Center Identifier	Coordinates
KATTA	340013.04N / 1314112.84E	DCRF2	335434.00N / 1312055.44E
MOTOI	335323.26N / 1313630.85E		
DC650	335109.96N / 1312644.12E		
DC551	335502.02N / 1312418.38E		
DC552	335549.64N / 1312348.45E		
DC553	335657.98N / 1311924.10E		
RW25	335606.56N / 1311726.64E		

CHANGE : PROC Course. VAR.

RJDC / YAMAGUCHI-UBE

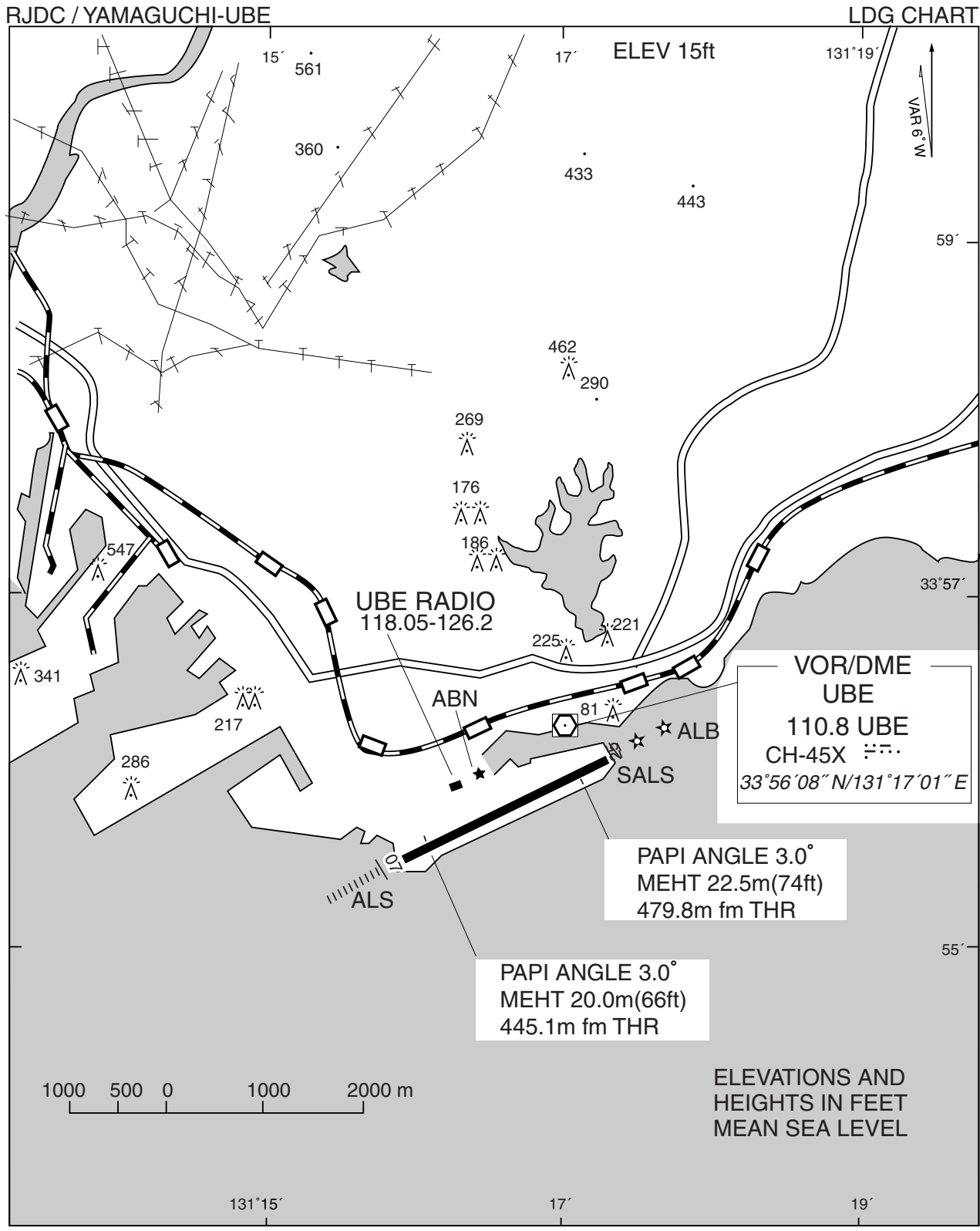
Visual REP



※図中に標高を示す数字がある場合、単位はメートル(m)である。The unit of measurement used to express elevation is meter(m).

CHANGE : Map updated. BRG/DIST from ARP.

Call sign	BRG / DIST from ARP	Remarks
小郡 Ogori	031°T / 11.4NM	JR駅 Station
丸山ダム Maruyama Dam	001°T / 7.3NM	ダム Dam
周防大橋 Suo-ohashi	042°T / 8.3NM	橋 Bridge
小野田 Onoda	320°T / 7.3NM	高速道路インターチェンジ Interchange
竹島 Takeshima	072°T / 7.5NM	島 Island
本山岬 Motoyamamisaki	271°T / 4.9NM	岬 Cape



RJDC / YAMAGUCHI-UBE

Minimum Vectoring Altitude CHART

