

CHANGE : AD chart added.

METABARU AERODROME
ELEV 16.08m(53ft)ARP

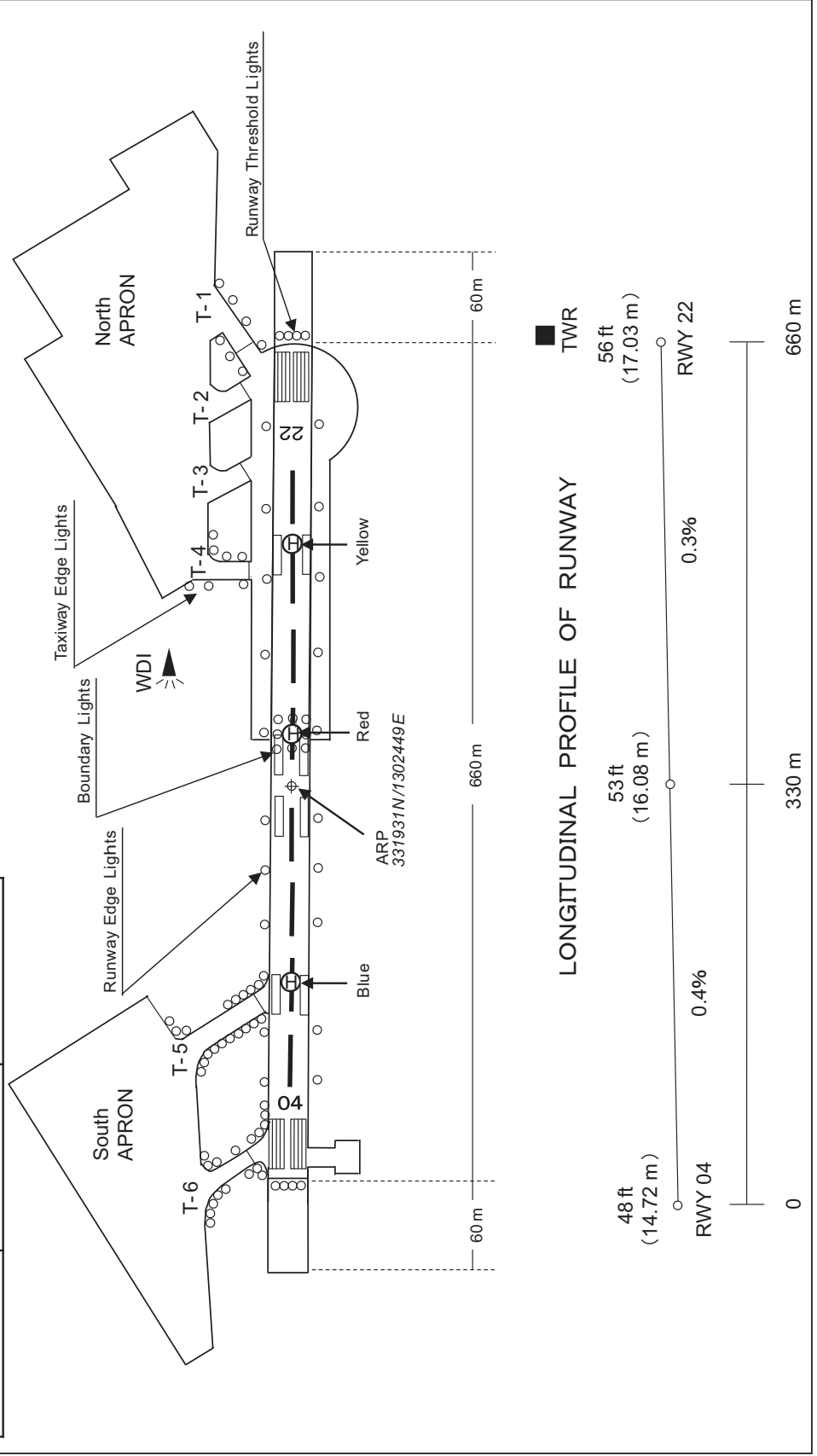
Designation	Call Sign	Frequency (MHz)
TWR	Metabaru Tower	121.5 123.1 126.2 138.05 139.8 140.5 304.8



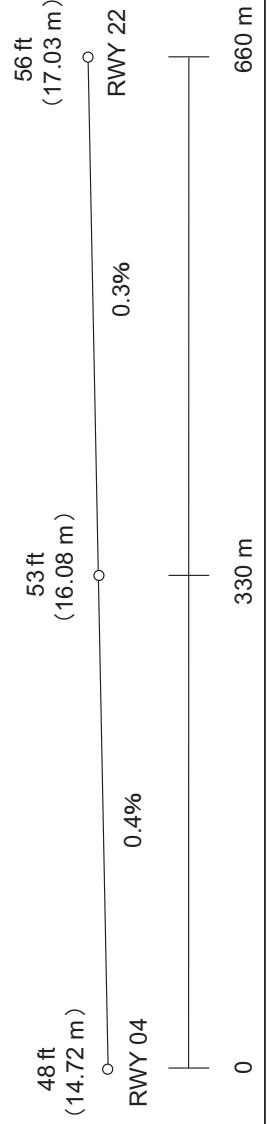
ABN



MBT



LONGITUDINAL PROFILE OF RUNWAY



INTENTIONALLY LEFT BLANK

STANDARD DEPARTURE CHART-INSTRUMENT

RJDM / METABARU

SID

SAGA ONE DEPARTURE

RWY04 : Climb RWY HDG to 500FT, turn right , ...

RWY22 : Climb RWY HDG to 400FT, turn left , ...

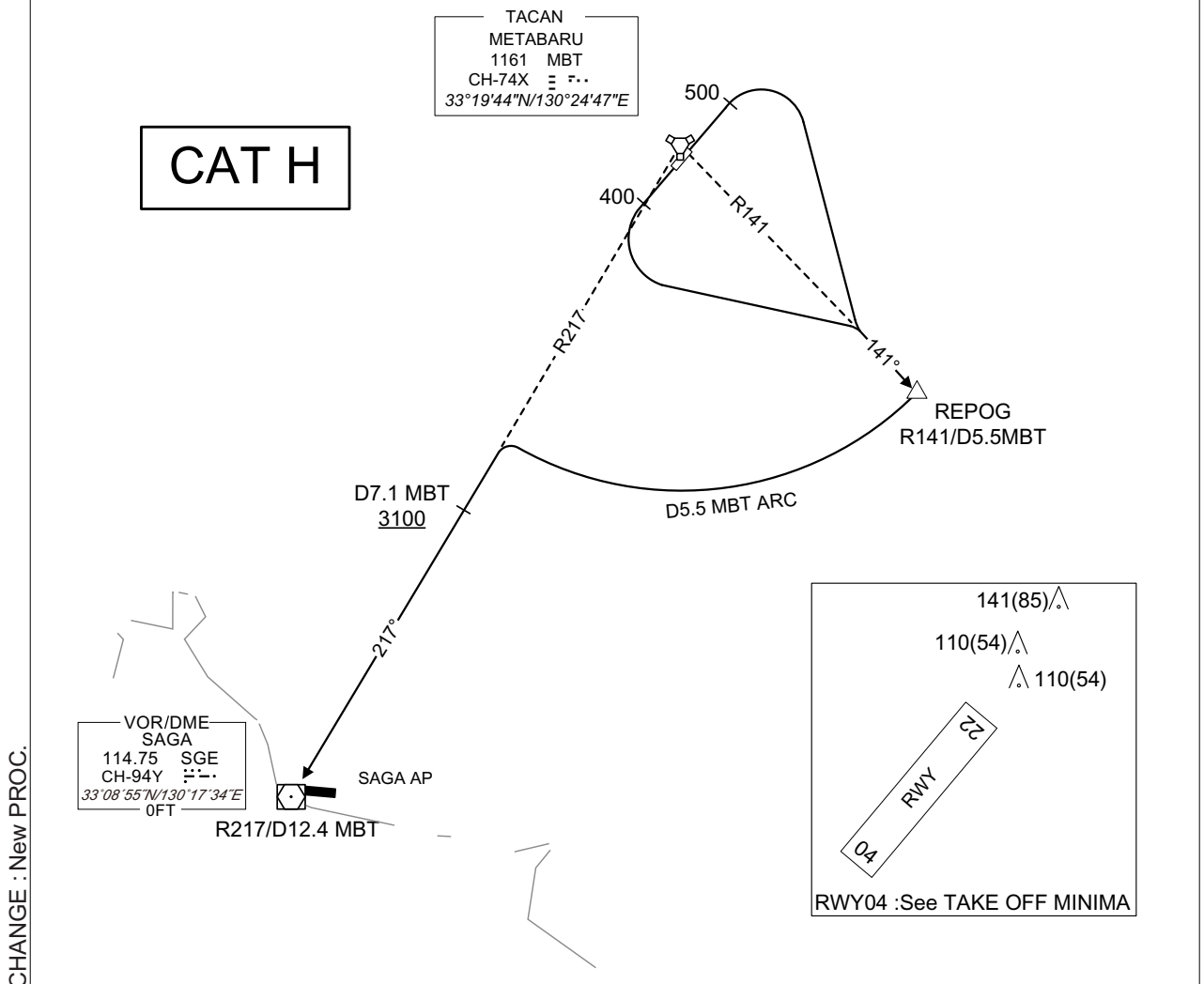
...via MBT R141 to REPOG, via MBT 5.5DME clockwise ARC to intercept and proceed via MBT R217 to SGE VOR/DME.
Cross MBT R217/7.1DME at or above 3100FT.

Note RWY04 : No turn before DER.

RWY22 : No turn before DER.

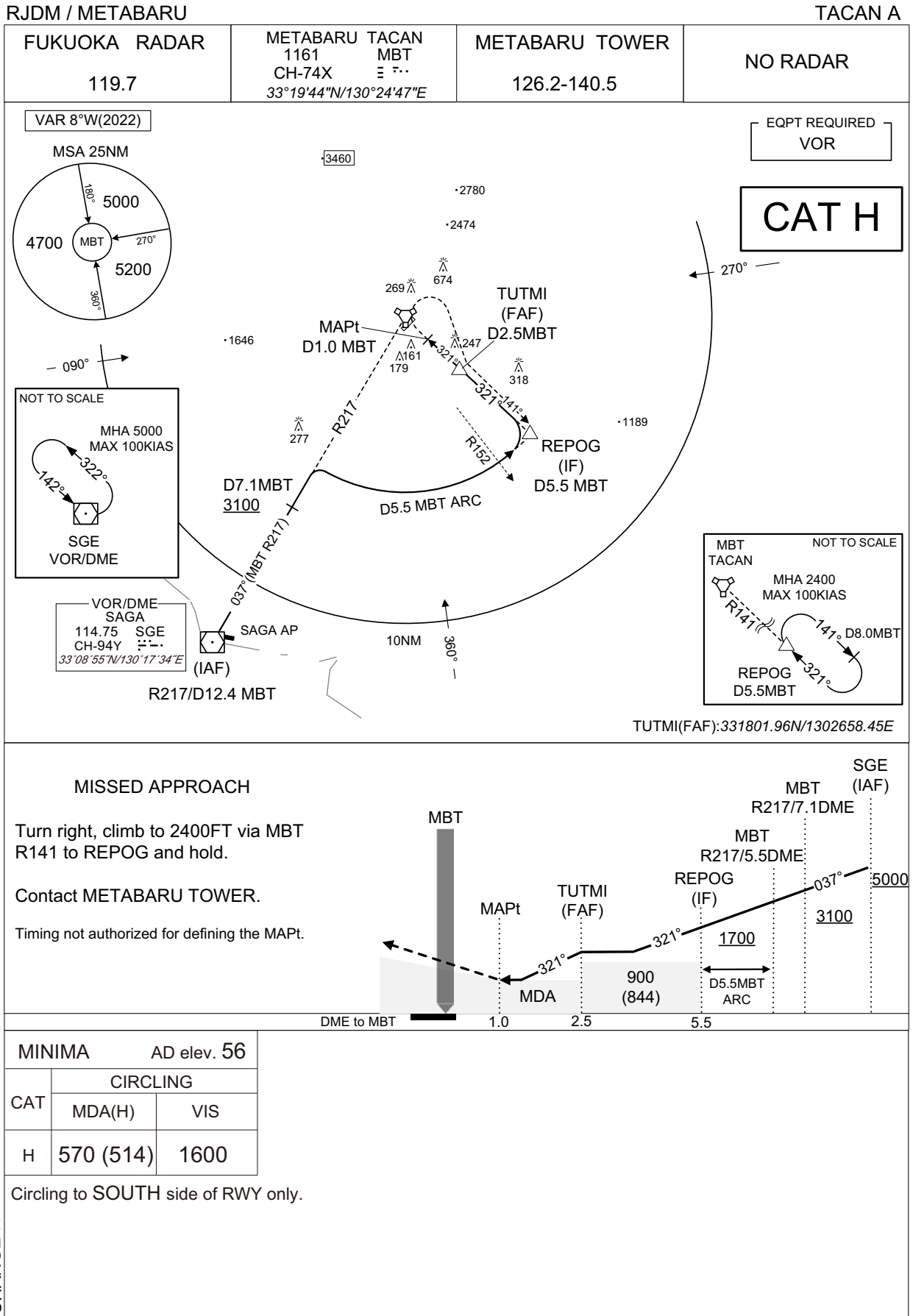
6.3% climb gradient required up to 400FT.

OBST ALT 99FT located at 0.1NM 252° FM end of RWY22.



INTENTIONALLY LEFT BLANK

INSTRUMENT APPROACH CHART



CHANGE : New PROC.

INTENTIONALLY LEFT BLANK