

AD 2 AERODROMES

RJDM AD 2.1 AERODROME LOCATION INDICATOR AND NAME

RJDM - METABARU

RJDM AD 2.2 AERODROME GEOGRAPHICAL AND ADMINISTRATIVE DATA

1	ARP coordinates and site at AD	331931N 1302449E
2	Direction and distance from (city)	
3	Elevation/ Reference temperature	56ft / Nil
4	Geoid undulation at AD ELEV PSN	Nil
5	MAG VAR/ Annual change	8°W(2022)
6	AD Administration, address, telephone, telefax, telex, AFS, e-mail and/or Web-site addresses	JSDF-G
7	Types of traffic permitted(IFR/ VFR)	IFR/VFR
8	Remarks	Nil

RJDM AD 2.3 OPERATIONAL HOURS

1	AD Administration	2300-0800 SUN-THU EXC HOL and 28 DEC-2 JAN Other time 1HR PN
2	Customs and immigration	Nil
3	Health and sanitation	Nil
4	AIS Briefing Office	2300-0800 SUN-THU EXC HOL and 28 DEC-2 JAN Other time 1HR PN
5	ATS Reporting Office(ARO)	Nil
6	MET Briefing Office	2200 - 0800 SUN-THU EXC HOL and 28 DEC-2 JAN, Other time on request
7	ATS	2300-0800 SUN-THU EXC HOL and 28 DEC-2 JAN Other time 1HR PN
8	Fuelling	Nil
9	Handling	Nil
10	Security	Nil
11	De-icing	Nil
12	Remarks	Nil

RJDM AD 2.4 HANDLING SERVICES AND FACILITIES

1	Cargo-handling facilities	Nil
2	Fuel/ oil types	JET A-1
3	Fuelling facilities/ capacity	To be issued later
4	De-icing facilities	Nil
5	Hangar space for visiting aircraft	Nil
6	Repair facilities for visiting aircraft	Nil
7	Remarks	Nil

RJDM AD 2.5 PASSENGER FACILITIES

1	Hotels	Nil
2	Restaurants	Nil
3	Transportation	Nil
4	Medical facilities	Nil
5	Bank and Post Office	Nil
6	Tourist Office	Nil
7	Remarks	Nil

RJDM AD 2.6 RESCUE AND FIRE FIGHTING SERVICES

1	AD category for fire fighting	Nil
2	Rescue equipment	Nil
3	Capability for removal of disabled aircraft	Nil
4	Remarks	Nil

RJDM AD 2.7 SEASONAL AVAILABILITY-CLEARING

1	Types of clearing equipment	Nil
2	Clearance priorities	Nil
3	Remarks	Nil

RJDM AD 2.8 APRONS, TAXIWAYS AND CHECK LOCATIONS DATA

1	Apron surface and strength	To be issued later
2	Taxiway width, surface and strength	To be issued later
3	ACL and elevation	Not available
4	VOR checkpoints	Nil
5	INS checkpoints	Nil
6	Remarks	Nil

RJDM AD 2.9 SURFACE MOVEMENT GUIDANCE AND CONTROL SYSTEM AND MARKINGS

1	Use of aircraft stand ID signs, TWY guide lines and Visual docking/ parking guidance system of aircraft stands	Nil
2	RWY and TWY markings and LGT	RWY04/22: (Marking) RWY designation, RWY CL, RWY THR, TDZ (LGT) REDL, RTHL TWY: (LGT) TWY edge LGT
3	Stop bars	Nil
4	Remarks	Nil

RJDM AD 2.10 AERODROME OBSTACLES

RWY/Area affected	Obstacle type	Coordinates	Elevation	Markings/ LGT	Remarks
Nil					

RJDM AD 2.11 METEOROLOGICAL INFORMATION PROVIDED

1	Associated MET Office	METABARU
2	Hours of service MET Office outside hours	2200-0800 SUN-THU EXC HOL and 28 DEC-2 JAN, Other time on request
3	Office responsible for TAF preparation Periods of validity	Nil
4	Trend forecast Interval of issuance	Nil
5	Briefing/ consultation provided	Nil
6	Flight documentation Language(s) used	Ja,En
7	Charts and other information available for briefing or consultation	S,U
8	Supplementary equipment available for providing information	Nil
9	ATS units provided with information	Nil
10	Additional information(limitation of service, etc.)	Nil

RJDM AD 2.12 RUNWAY PHYSICAL CHARACTERISTICS

Designations RWY NR	TRUE BRG	Dimensions of RWY(M)	Strength(PCN) and surface of RWY	THR coordinates THR geoid undulation	THR elevation and highest elevation of TDZ of precision APP RWY
1	2	3	4	5	6
04	To be	660×30	SIWL	Nil	Nil
22	issued Later	660×30	(5000lbs)	Nil	Nil
Slope of RWY	Strip Dimensions(M)		Remarks		
7	10		12		
Nil	780×60 780×60				

RJDM AD 2.13 DECLARED DISTANCES

RWY Designator	TORA (m)	TODA (m)	ASDA (m)	LDA (m)	Remarks
1	2	3	4	5	6

RJDM AD 2.14 APPROACH AND RUNWAY LIGHTING

RWY Designator	APCH LGT type LEN INTST	RTHL Color WBAR	PAPI (VASIS) Angle DIST FM THR MEHT	RTZL LEN	RCLL LEN Spacing Color INTST	REDL LEN Spacing Color INTST	RENL Color WBAR	STWL LEN Color
1	2	3	4	5	6	7	8	9
04 22								
Remarks								
10								

RJDM AD 2.15 OTHER LIGHTING, SECONDARY POWER SUPPLY

1	ABN/IBN location, characteristics and hours of operation	ABN: 331941N/1302442E, White/Green EV6sec, HO
2	LDI location and LGT Anemometer location and LGT	Nil
3	TWY edge and centerline lighting	TWY edge LGT: AVBL
4	Secondary power supply/ switch-over time	Nil
5	Remarks	WDI LGT, OBST LGT

RJDM AD 2.16 HELICOPTER LANDING AREA

To be issued later

RJDM AD 2.17 ATS AIRSPACE

Designation and lateral limits		Vertical limits (ft)	Airspace classification	ATS unit call sign Language	Remarks
1		2	3	4	6
METABARU CTR	Area within a radius of 5NM of METABARU ARP(33° 20'N130° 25'E).	3000 or below	D	METABARU TOWER	

RJDM AD 2.18 ATS COMMUNICATION FACILITIES

Service designation	Call sign	Frequency	Hours of operation	Remarks
1	2	3	4	5
TWR	Metabaru Tower	126.2MHz	2300 - 0800(2)	APP service provided by
		140.5MHz	SUN-THU	Fukuoka RADAR: 2300-0800
		139.8MHz	Other time	(1)Rescue only.
		138.05MHz	1HR PN	(2)EXC HOL and 28 DEC-
		123.1MHz(1)		2 JAN.
		121.5MHz(E)		
		304.8MHz		

RJDM AD 2.19 RADIO NAVIGATION AND LANDING AIDS

Type of aid	ID	Frequency	Hours of operation	Position of transmitting antenna coordinates	Elevation of DME transmitting antenna	Remarks
1	2	3	4	5	6	7
TACAN	MBT	1161MHz (CH-74X)	2300-0800(1) SUN-THU Other time 1HR PN	331944.30N/ 1302447.33E		(1)EXC HOL and 28 DEC-2 JAN Unusable: R360-010 beyond 10NM BLW 6000ft. R010-020 beyond 10NM BLW 5000ft. R020-040 beyond 10NM BLW 6000ft. R040-050 beyond 18NM BLW 6000ft. R050-060 beyond 32NM BLW 6000ft. R060-070 beyond 34NM BLW 6000ft. R070-080 beyond 37NM BLW 6000ft. R100-110 beyond 38NM BLW 8000ft. R170-180 beyond 39NM BLW 6000ft. R200-220 beyond 26NM BLW 7000ft. R220-250 beyond 21NM BLW 6000ft. R250-260 beyond 21NM BLW 5000ft. R260-280 beyond 21NM BLW 6000ft. R280-290 beyond 20NM BLW 6000ft. R290-300 beyond 25NM BLW 6000ft. R300-310 beyond 13NM BLW 5000ft. R310-360 beyond 12NM BLW 6000ft.

RJDM AD 2.20 LOCAL TRAFFIC REGULATIONS

1. Airport regulations

Nil

2. Taxiing to and from stands

Nil

3. Parking area for small aircraft(General aviation)

Nil

4. Parking area for helicopters

Nil

5. Apron - taxiing during winter conditions

Nil

6. Taxiing - limitations

Nil

7. School and training flights - technical test flights - use of runways

Nil

8. Helicopter traffic - limitation

Nil

9. Removal of disabled aircraft from runways

Nil

RJDM AD 2.21 NOISE ABATEMENT PROCEDURES

Nil

RJDM AD 2.22 FLIGHT PROCEDURES

TAKE OFF MINIMA

	RWY	ACFT CAT	REDL & RCLL		REDL or RCLL or RCL Marking		NIL (DAYTIME ONLY)	
			CEIL-RVR	CEIL-VIS	CEIL-RVR	CEIL-VIS	CEIL-RVR	CEIL-VIS
Multi-Engine ACFT with TKOF ALTN AP FILED	04	H	-	-	-	200'-2400	-	200'-2400
	22		-	-	-	0'-400	-	0'-500
OTHER	04	H	AVBL LDG MINIMA					
	22							

RJDM AD 2.23 ADDITIONAL INFORMATION

Nil

RJDM AD 2.24 CHARTS RELATED TO AN AERODROME

Aerodrome/Heliport Chart
Standard Departure Chart - Instrument (SAGA)
Instrument Approach Chart (TACAN A)

CHANGE : AD chart added.

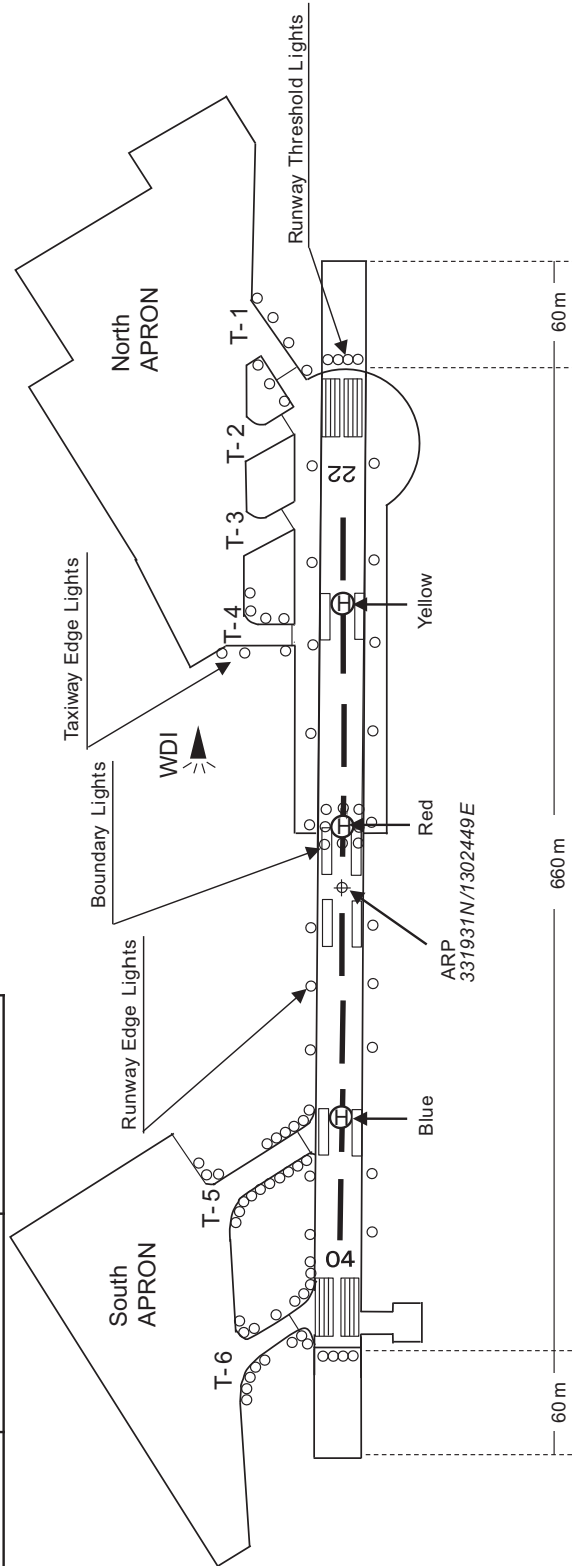
METABARU AERODROME
ELEV 16.08m(53ft)ARP

Designation	Call Sign	Frequency (MHz)
TWR	Metabaru Tower	121.5 123.1 126.2 138.05 139.8 140.5 304.8

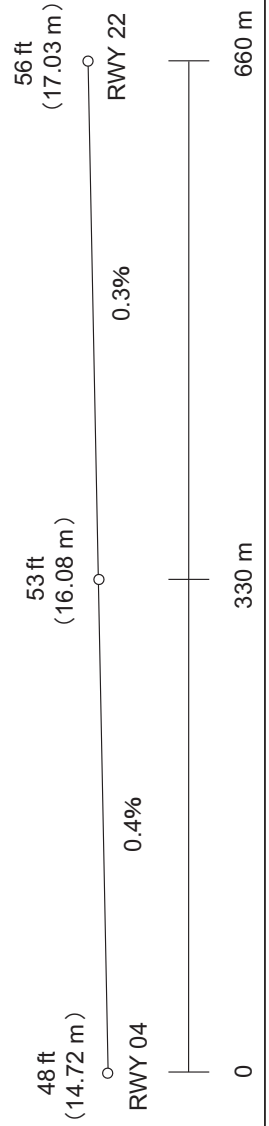
★ ABN

VRG 8° W
(2022)

MBT



LONGITUDINAL PROFILE OF RUNWAY



INTENTIONALLY LEFT BLANK

STANDARD DEPARTURE CHART-INSTRUMENT

RJDM / METABARU

SID

SAGA ONE DEPARTURE

RWY04 : Climb RWY HDG to 500FT, turn right , ...

RWY22 : Climb RWY HDG to 400FT, turn left , ...

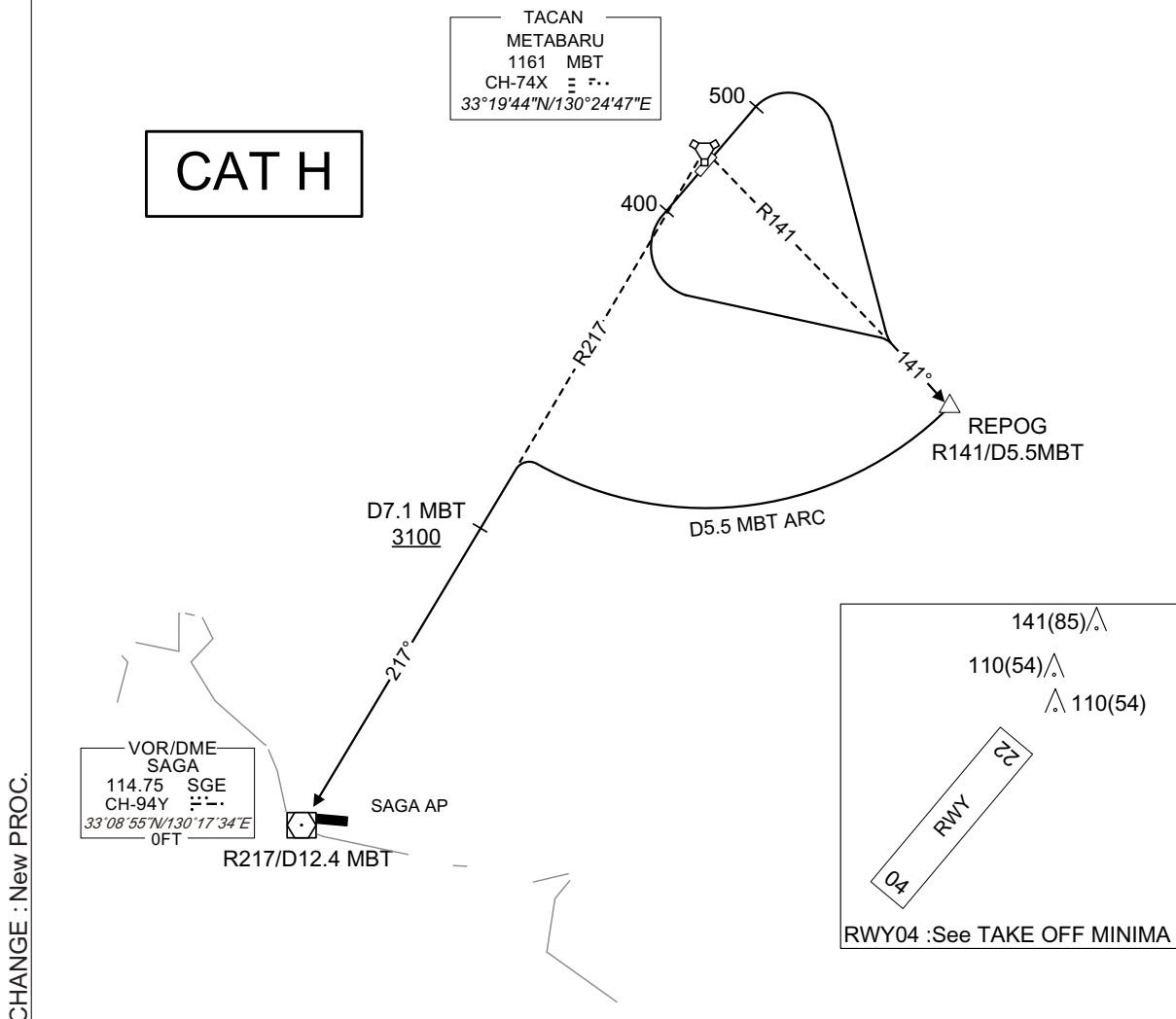
...via MBT R141 to REPOG, via MBT 5.5DME clockwise ARC to intercept and proceed via MBT R217 to SGE VOR/DME.
Cross MBT R217/7.1DME at or above 3100FT.

Note RWY04 : No turn before DER.

RWY22 : No turn before DER.

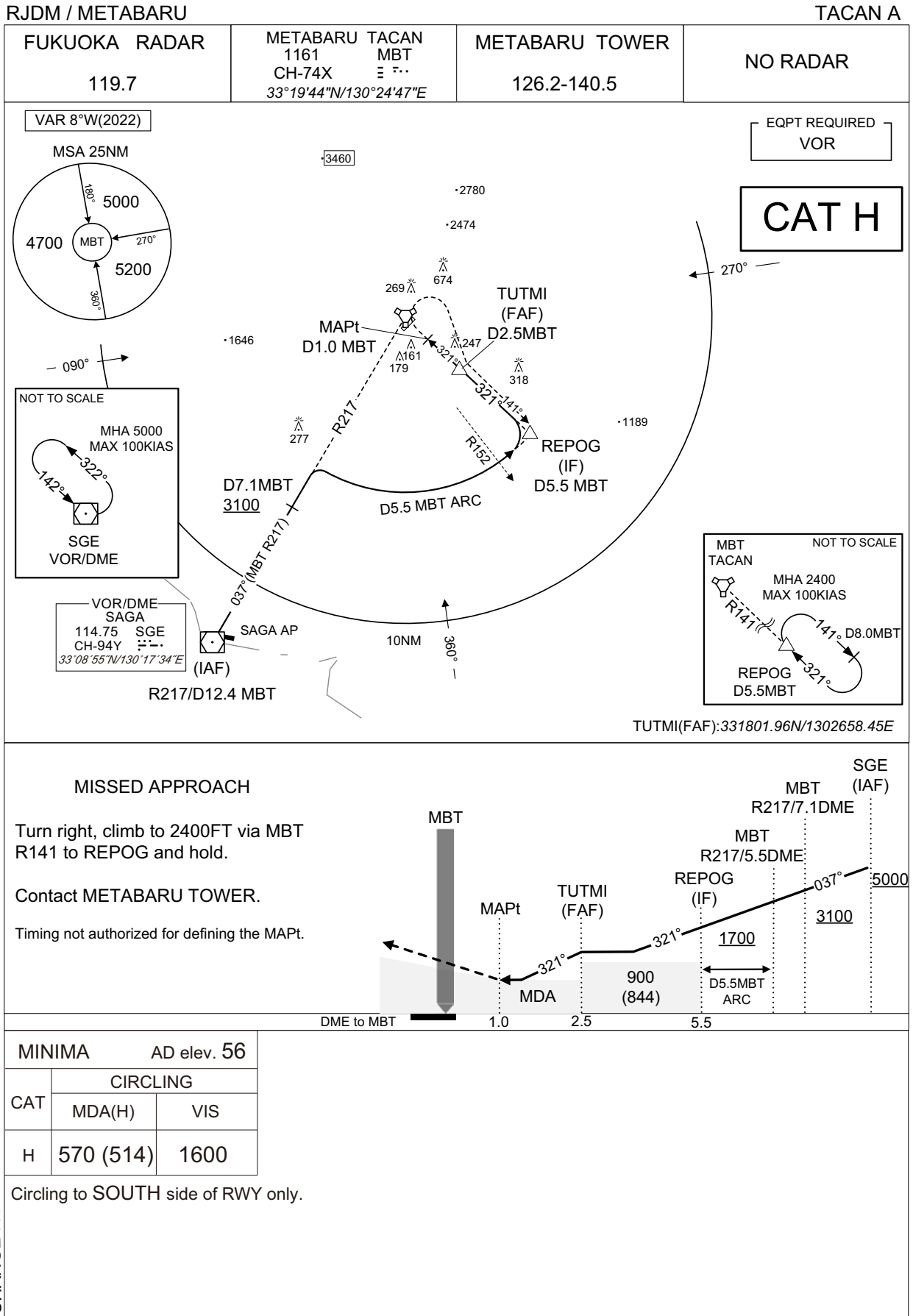
6.3% climb gradient required up to 400FT.

OBST ALT 99FT located at 0.1NM 252° FM end of RWY22.



INTENTIONALLY LEFT BLANK

INSTRUMENT APPROACH CHART



CHANGE : New PROC.

INTENTIONALLY LEFT BLANK