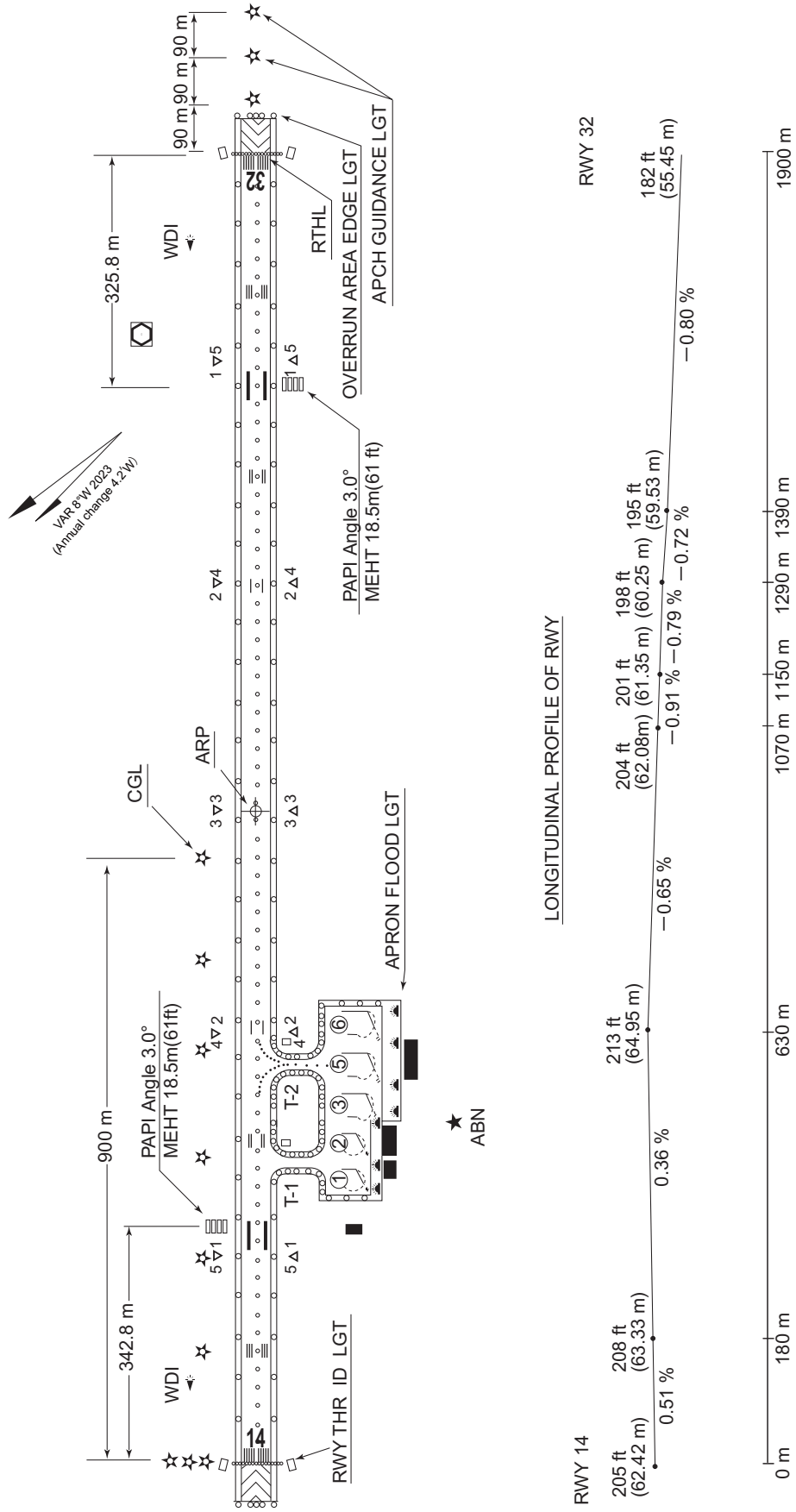


RJDT / TSUSHIMA

AD CHART

CHANGE : VAR.

TSUSHIMA AP



REMARKS RWY GROOVING 30m x 1900m  
WIDTH OF TWY T-1 T-2 23m

**INTENTIONALLY LEFT BLANK**

STANDARD DEPARTURE CHART - INSTRUMENT

RJDT / TSUSHIMA

SID

IKISHIMA SIX DEPARTURE

RWY 14 : Climb RWY HDG to 900FT,...

RWY 32 : Climb on HDG 338° to 900FT, turn right HDG 198°,...  
...to intercept and proceed via VCE R153 to IKE VOR/DME.  
Cross VCE R153/20.0DME at or above 4000FT.

Note RWY 32 : 5.2% climb gradient required up to 900FT.

OBST ALT 262FT located at 0.2NM 292° FM end of RWY 32.

LAGER THREE DEPARTURE

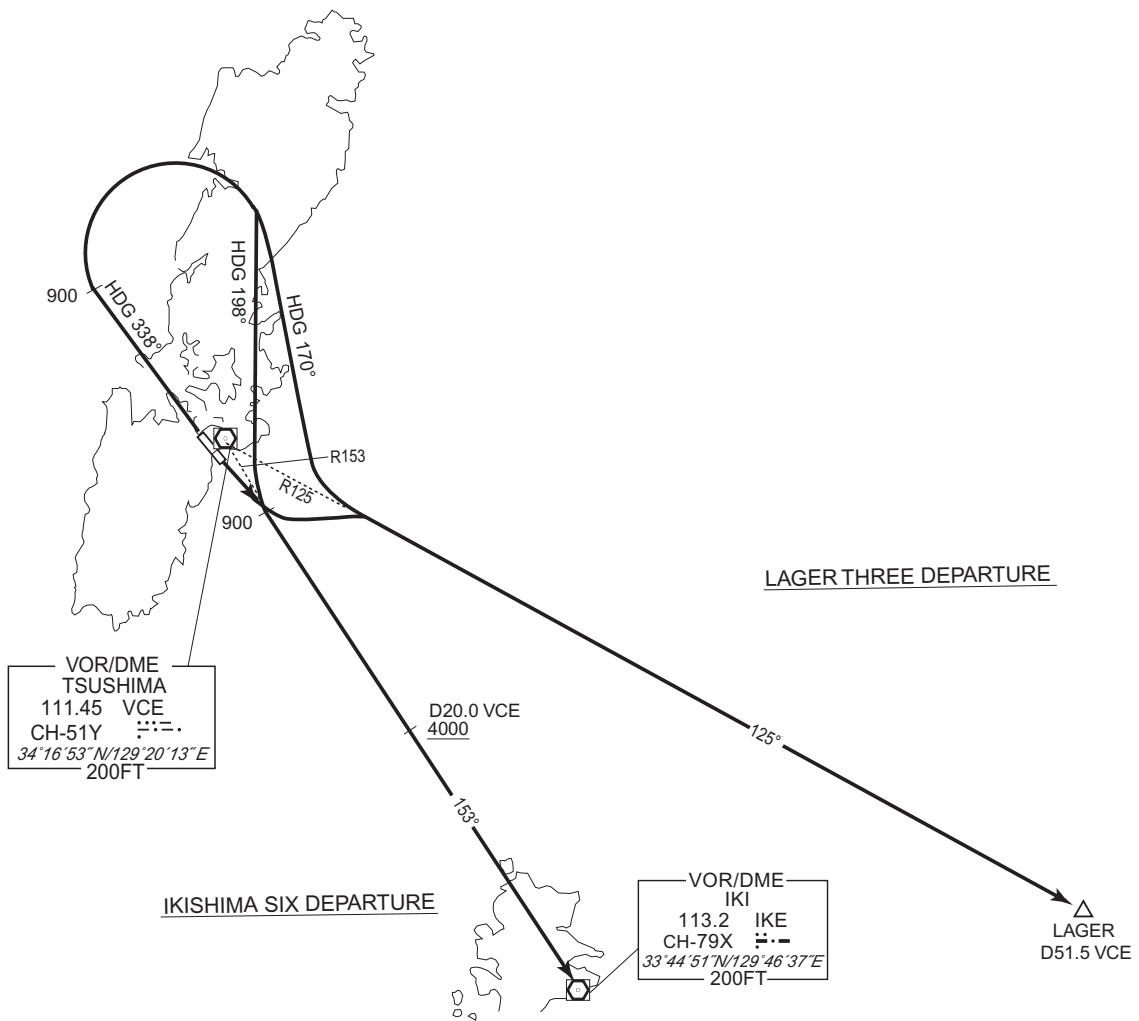
RWY 14 : Climb RWY HDG to 900FT, turn left,...

RWY 32 : Climb on HDG 338° to 900FT, turn right HDG 170°,...  
...to intercept and proceed via VCE R125 to LAGER.

Note RWY 32 : 5.2% climb gradient required up to 900FT.

OBST ALT 262FT located at 0.2NM 292° FM end of RWY 32.

CHANGE : PROC renamed. Note.



STANDARD DEPARTURE CHART - INSTRUMENT

RJDT / TSUSHIMA

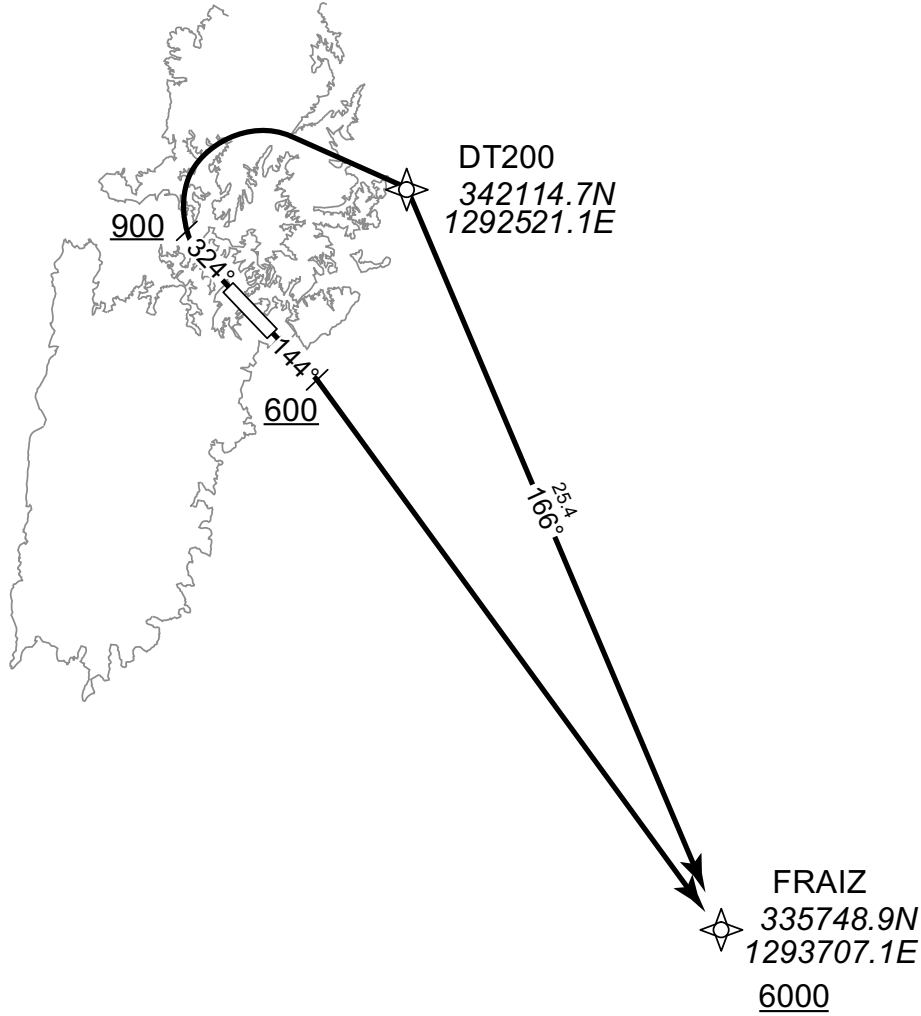
RNAV SID

FRAIZ ONE DEPARTURE

RNP1

Note GNSS required.

VAR 8°W



CHANGE : Navigation Specification(Basic RNP1 → RNP1).

RWY14 : Climb on HDG144° at or above 600FT, turn right direct to FRAIZ at or above 6000FT.

RWY32 : Climb on HDG324° at or above 900FT, turn right direct to DT200, to FRAIZ at or above 6000FT.

Note RWY32 :5.2% climb gradient required up to 900FT.  
OBST ALT 262FT located at 0.2NM 292° FM end of RWY32.

STANDARD DEPARTURE CHART - INSTRUMENT

RJDT / TSUSHIMA

RNAV SID

FRAIZ ONE DEPARTURE

RWY14

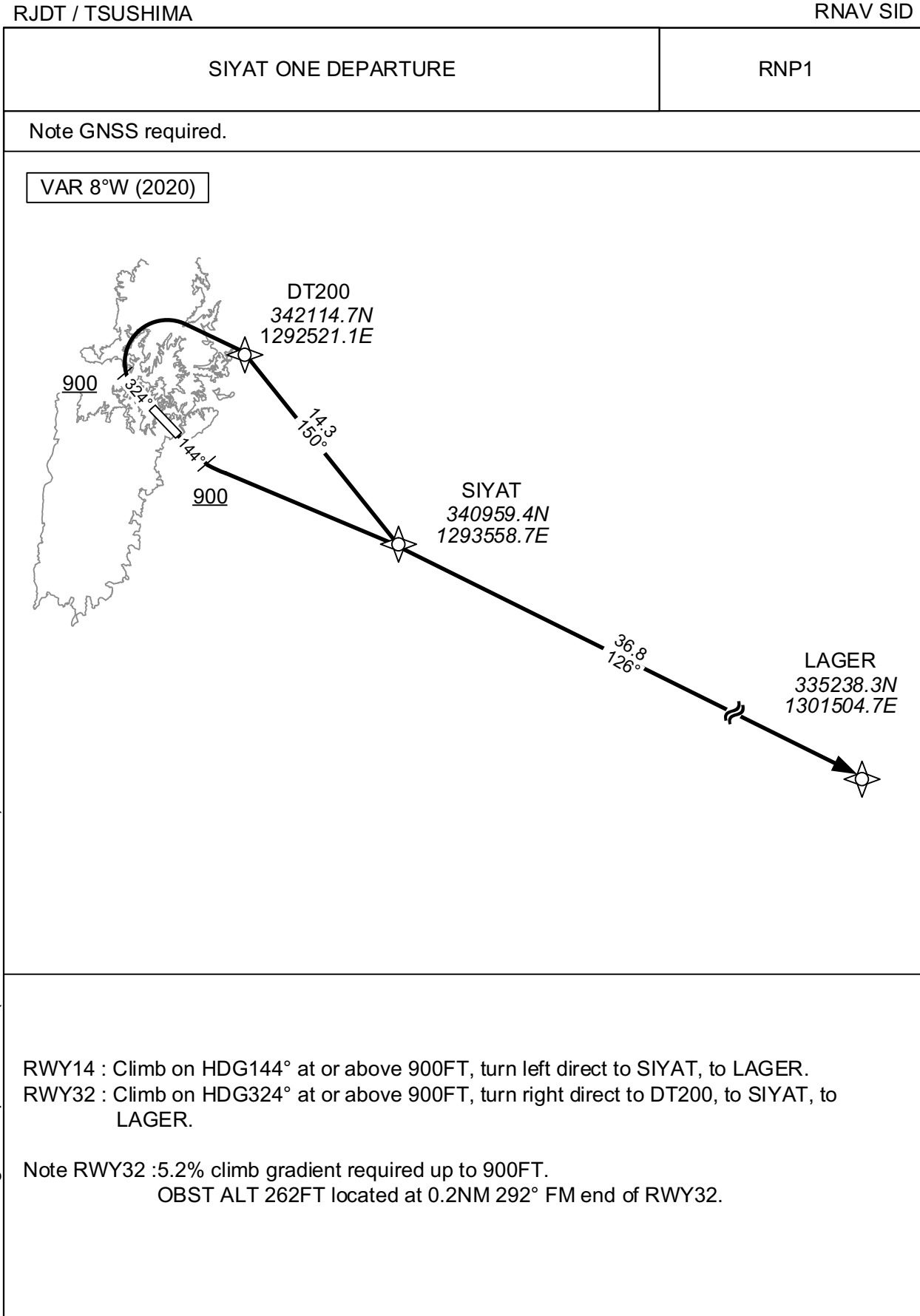
Serial Number	Path Descriptor	Waypoint Identifier	Fly Over	Course °M(°T)	Magnetic Variation	Distance (NM)	Turn Direction	Altitude (FT)	Speed (KIAS)	Vertical Angle	Navigation Specification
001	VA	-	-	144 (136.2)	-8.2	-	-	+600	-	-	RNP1
002	DF	FRAIZ	-	-	-8.2	-	R	+6000	-	-	RNP1

RWY32

Serial Number	Path Descriptor	Waypoint Identifier	Fly Over	Course °M(°T)	Magnetic Variation	Distance (NM)	Turn Direction	Altitude (FT)	Speed (KIAS)	Vertical Angle	Navigation Specification
001	VA	-	-	324 (316.2)	-8.2	-	-	+900	-	-	RNP1
002	DF	DT200	-	-	-8.2	-	R	-	-	-	RNP1
003	TF	FRAIZ	-	166 (157.4)	-8.2	25.4	-	+6000	-	-	RNP1

CHANGE : Navigation Specification(Basic RNP1 → RNP1).

STANDARD DEPARTURE CHART - INSTRUMENT



CHANGE : Navigation Specification(Basic RNP1 → RNP1).

STANDARD DEPARTURE CHART - INSTRUMENT

RJDT / TSUSHIMA

RNAV SID

SIYAT ONE DEPARTURE

RWY14

Serial Number	Path Descriptor	Waypoint Identifier	Fly Over	Course °M(°T)	Magnetic Variation	Distance (NM)	Turn Direction	Altitude (FT)	Speed (KIAS)	Vertical Angle	Navigation Specification
001	VA	-	-	144 (136.2)	-7.9	-	-	+900	-	-	RNP1
002	DF	SIYAT	-	-	-7.9	-	L	-	-	-	RNP1
003	TF	LAGER	-	126 (118.0)	-7.9	36.8	-	-	-	-	RNP1

RWY32

Serial Number	Path Descriptor	Waypoint Identifier	Fly Over	Course °M(°T)	Magnetic Variation	Distance (NM)	Turn Direction	Altitude (FT)	Speed (KIAS)	Vertical Angle	Navigation Specification
001	VA	-	-	324 (316.2)	-7.9	-	-	+900	-	-	RNP1
002	DF	DT200	-	-	-7.9	-	R	-	-	-	RNP1
003	TF	SIYAT	-	150 (142.0)	-7.9	14.3	-	-	-	-	RNP1
004	TF	LAGER	-	126 (118.0)	-7.9	36.8	-	-	-	-	RNP1

CHANGE : Navigation Specification(Basic RNP1 → RNP1).

STANDARD ARRIVAL CHART - INSTRUMENT

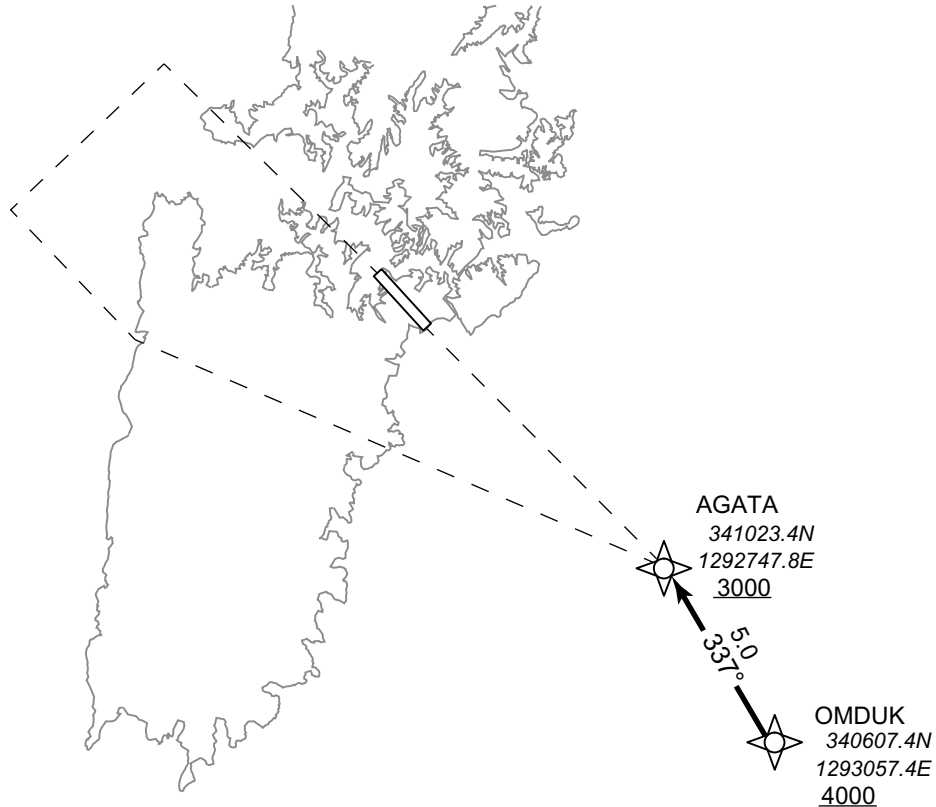
RJDT / TSUSHIMA

RNAV STAR

OMDUK ARRIVAL	RNP1
---------------	------

Note GNSS required.

VAR 8°W (2022)



CHANGE : Navigation Specification(Basic RNP1 → RNP1).

From OMDUK at or above 4000FT, to AGATA at or above 3000FT.

Serial Number	Path Descriptor	Waypoint Identifier	Fly Over	Course °M(°T)	Magnetic Variation	Distance (NM)	Turn Direction	Altitude (FT)	Speed (KIAS)	Vertical Angle	Navigation Specification
001	IF	OMDUK	—	—	-8.1	—	—	+4000	—	—	RNP1
002	TF	AGATA	—	337 (328.5)	-8.1	5.0	—	+3000	—	—	RNP1



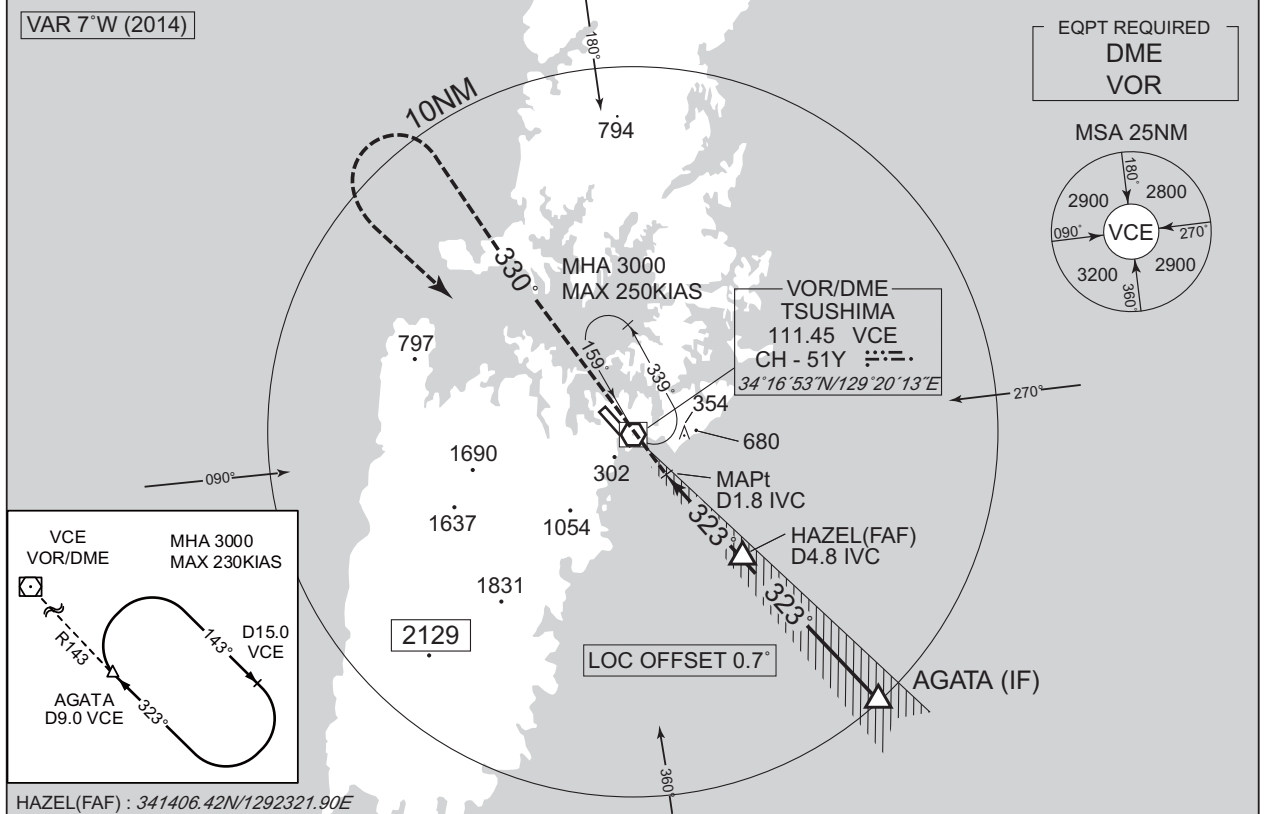
**INTENTIONALLY LEFT BLANK**

INSTRUMENT APPROACH CHART

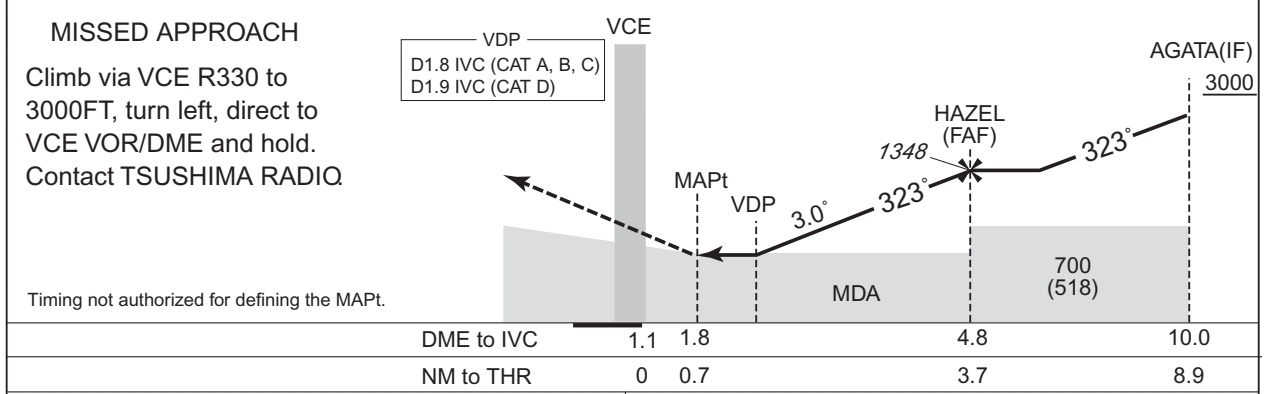
RJDT / TSUSHIMA

LOC Z RWY32

KOBE CONTROL 118.9 – 303.8 134.25 – 315.5	LOC 108.7 IVC $\ddot{=}$ LOC-DME CH-24X	TSUSHIMA RADIO 124.3 AFIS provided by Fukuoka Airport Office	NO RADAR
---	---	---	----------



NM to IVC	MAPt	2	3	4	FAF
ALT (3.0° APCH Path)	-	507	825	1143	1348



MINIMA		THR elev. 182	AD elev. 207	
CAT			CIRCLING	
	MDA(H)	CMV	MDA(H)	VIS
A	440 (258)	1500	690 (483)	1600
B			760 (553)	
C	450 (268)	1600	1090 (883)	2400
D	470 (288)	1800		3200

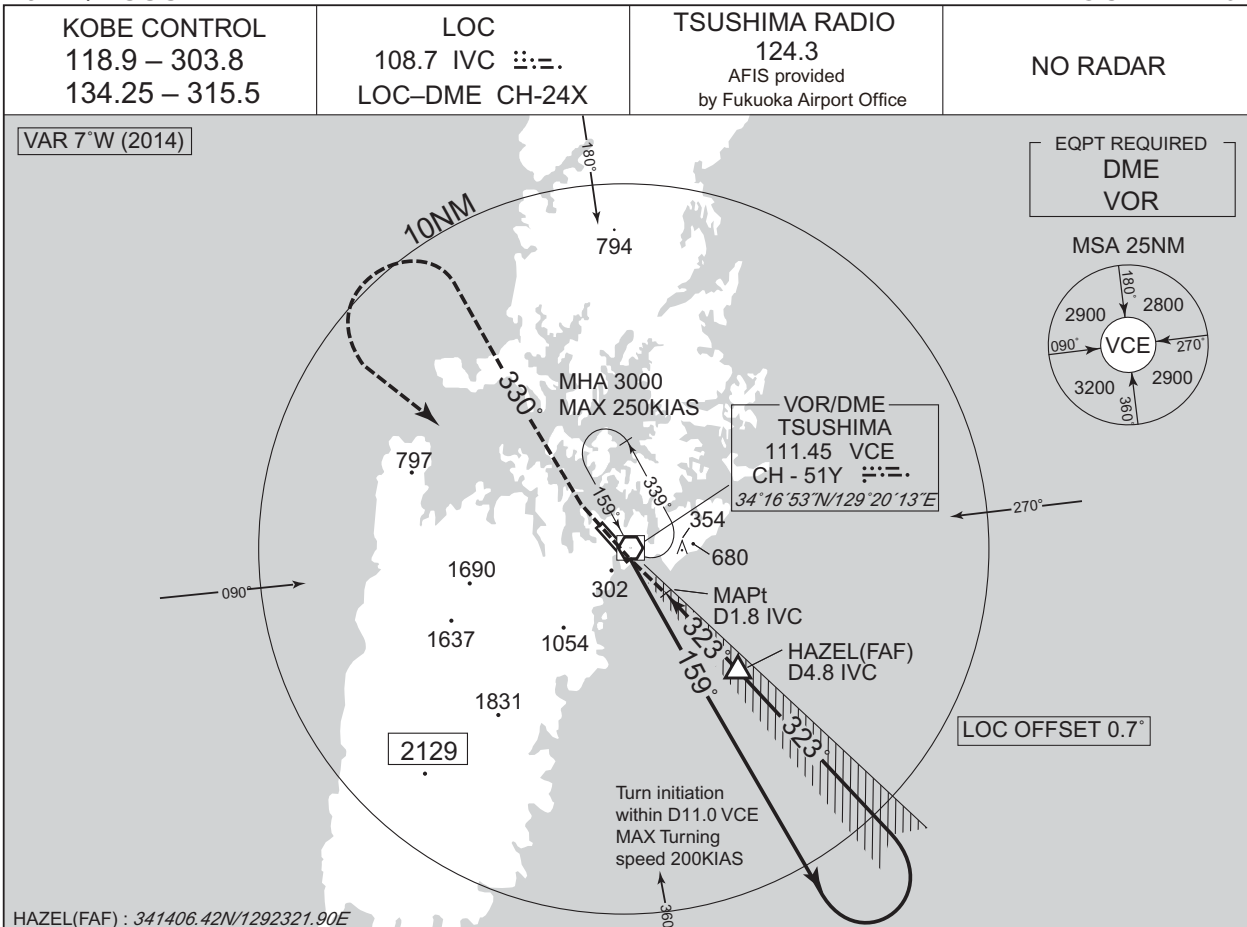
Circling to EAST side of RWY only.

CHANGE : Secondary FREQ abolished(TSUSHIMA RADIO).

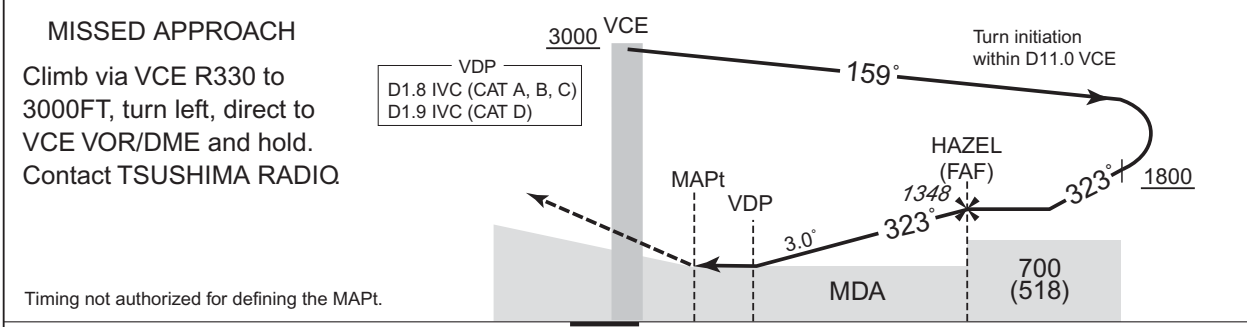
INSTRUMENT APPROACH CHART

RJDT / TSUSHIMA

LOC Y RWY32



	NM to IVC	MAPt	2	3	4	FAF
	ALT (3.0° APCH Path)	-	507	825	1143	1348



	DME to IVC	1.1	1.8	4.8
	NM to THR	0	0.7	3.7

MINIMA		THR elev. 182	AD elev. 207	
CAT	MDA(H)		CIRCLING	
	MDA(H)	CMV	MDA(H)	VIS
A	440 (258)	1500	690 (483)	1600
B			760 (553)	
C	450 (268)	1600	1090 (883)	2400
D	470 (288)	1800		3200

Circling to EAST side of RWY only.

CHANGE : Secondary FREQ abolished(TSUSHIMA RADIO).

INSTRUMENT APPROACH CHART

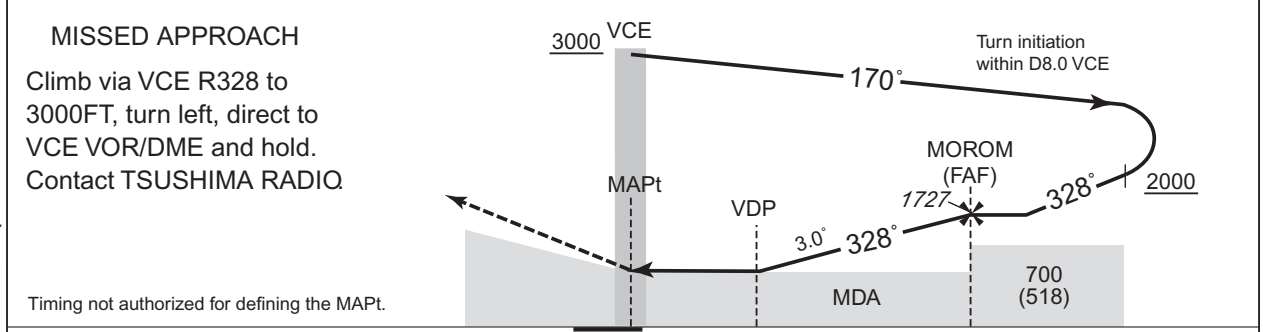
RJDT / TSUSHIMA

VOR RWY32

KOBE CONTROL 118.9 – 303.8 134.25 – 315.5	TSUSHIMA VOR/DME 111.45 VCE CH-51Y 34°16'53"N/129°20'13"E	TSUSHIMA RADIO 124.3 AFIS provided by Fukuoka Airport Office	NO RADAR
---	--	---	----------



NM to VCE	MAPt	2	3	4	FAF
ALT (3.0° APCH Path)	-	822	1140	1459	1727



DME to VCE	0.2	1.1	5.0
NM to THR	0	0.9	4.8

MINIMA		THR elev. 182	AD elev. 207	
CAT			CIRCLING	
	MDA(H)	CMV	MDA(H)	VIS
A	550 (368)	1500	690 (483)	1600
B			760 (553)	
C		1800	1090 (883)	2400
D		2000		3200

Circling to EAST side of RWY only.

CHANGE : Secondary FREQ abolished(TSUSHIMA RADIO).

INSTRUMENT APPROACH CHART

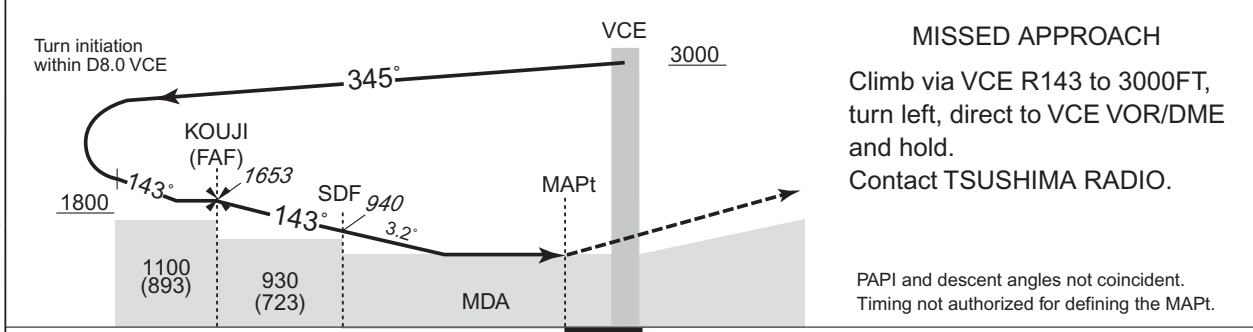
RJDT / TSUSHIMA

VOR RWY14

KOBE CONTROL 118.9 – 303.8 134.25 – 315.5	TSUSHIMA VOR/DME 111.45 VCE CH-51Y 34°16'53"N/129°20'13"E	TSUSHIMA RADIO 124.3 AFIS provided by Fukuoka Airport Office	NO RADAR
---	--	---	----------



NM to VCE	MAPt	3	4	FAF
ALT (3.2° APCH Path)	-	974	1314	1653



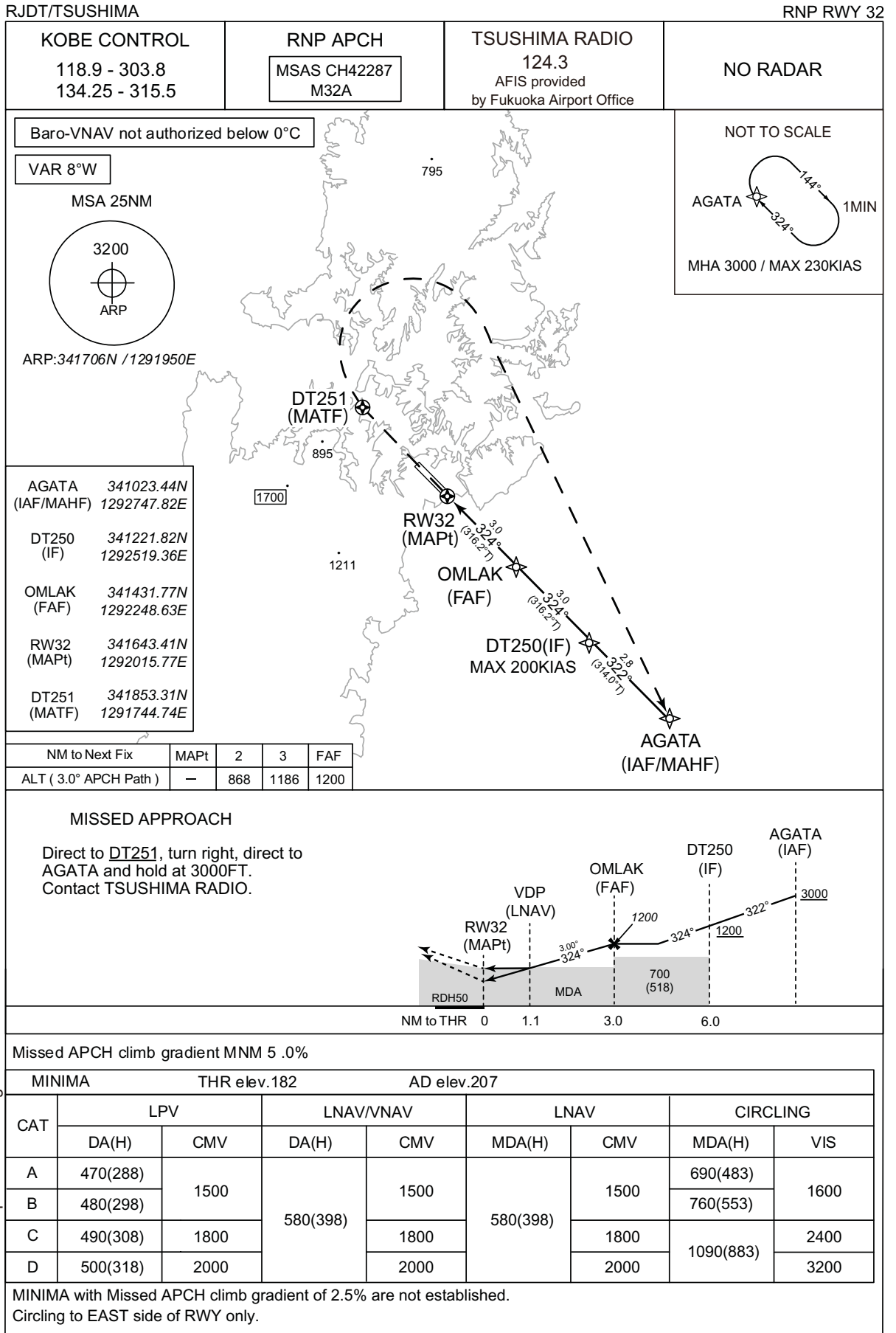
5.0	2.9	0.9	DME to VCE
4.1	2.0	0	NM to THR

MINIMA		THR elev. 205	AD elev. 207	
CAT	CIRCLING			
	MDA(H)	CMV	MDA(H)	VIS
A	780 (573)	1500	780 (573)	1600
B				2400
C		2000	1090 (883)	3200
D				

Circling to EAST side of RWY only.

CHANGE : Secondary FREQ abolished(TSUSHIMA RADIO).

INSTRUMENT APPROACH CHART



INSTRUMENT APPROACH CHART

RJDT / TSUSHIMA

RNP RWY32

**FAS DATA BLOCK**

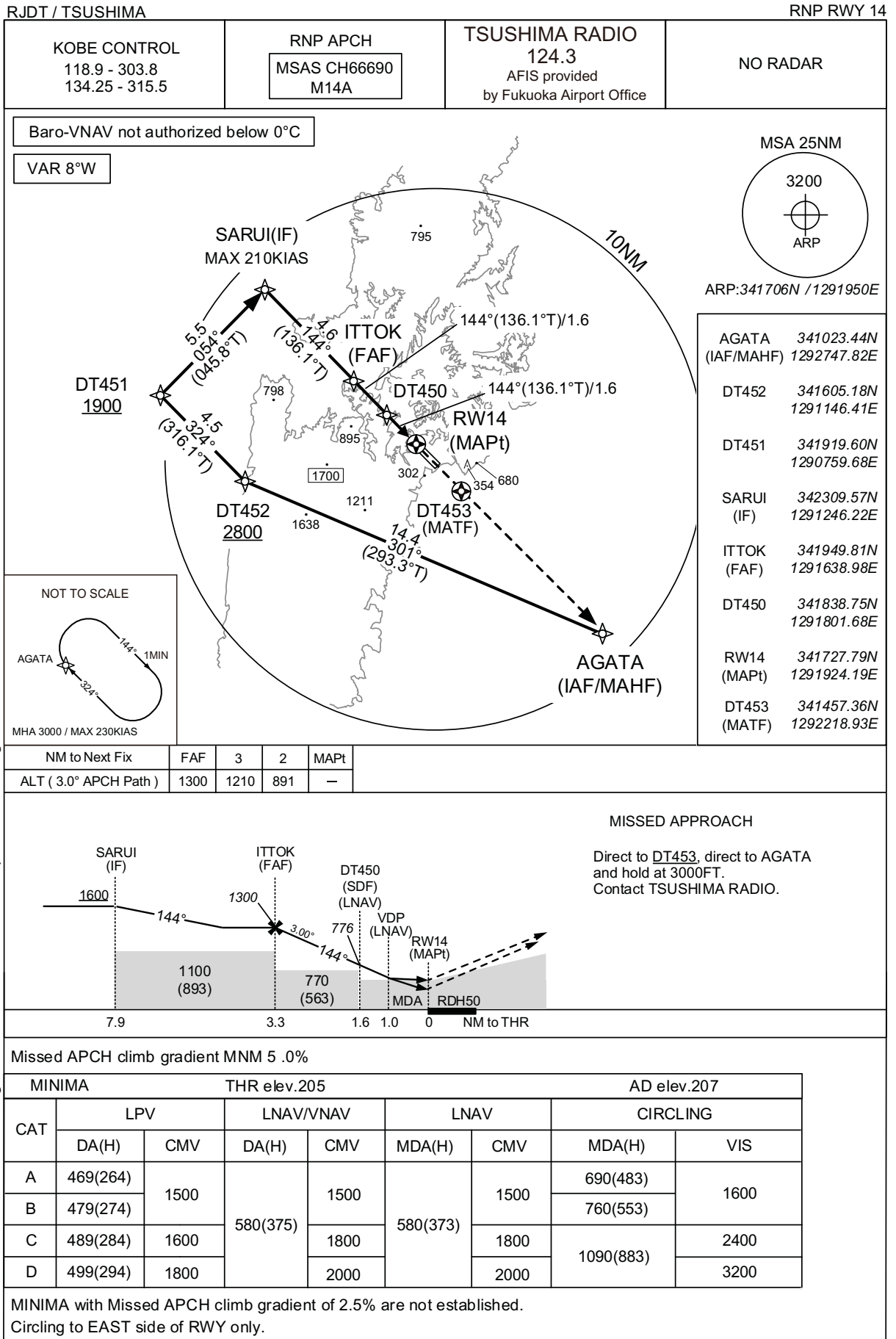
Operation type	0	LTP/FTP ellipsoidal height	+00861
SBAS service provider identifier	2	FPAP latitude	341727.7595N
Airport identifier	RJDT	FPAP longitude	1291924.2050E
Runway	32	Threshold crossing height	00015.0
Approach performance designator	0	TCH units selector	1
Route indicator		Glide path angle	03.00
Reference path data selector	0	Course width at threshold	105.00
Reference path ID	M32A	∠ length offset	0000
LTP/FTP latitude	341643.3790N	HAL	40.0
LTP/FTP longitude	1292015.7765E	VAL	50.0
CRC remainder	EA5E957D		

**Required additional data**

LTP/FTP orthometric height	55.4
----------------------------	------

CHANGE : Description of FAS DATA BLOCK ITEM(CRC remainder).

INSTRUMENT APPROACH CHART



CHANGE : Missed APCH for using VOR/DME abolished. HLDG pattern for using NAVAID abolished.



INSTRUMENT APPROACH CHART

RJDT / TSUSHIMA

RNP RWY14

**FAS DATA BLOCK**

Operation type	0	LTP/FTP ellipsoidal height	+00930
SBAS service provider identifier	2	FPAP latitude	341643.3790N
Airport identifier	RJDT	FPAP longitude	1292015.7765E
Runway	14	Threshold crossing height	00015.0
Approach performance designator	0	TCH units selector	1
Route indicator		Glide path angle	03.00
Reference path data selector	0	Course width at threshold	105.00
Reference path ID	M14A	∟ length offset	0000
LTP/FTP latitude	341727.7595N	HAL	40.0
LTP/FTP longitude	1291924.2050E	VAL	50.0
CRC remainder	1534DDCD		

**Required additional data**

LTP/FTP orthometric height	62.3
----------------------------	------

CHANGE : Description of FAS DATA BLOCK ITEM(CRC remainder).

RJDT / TSUSHIMA

Visual REP



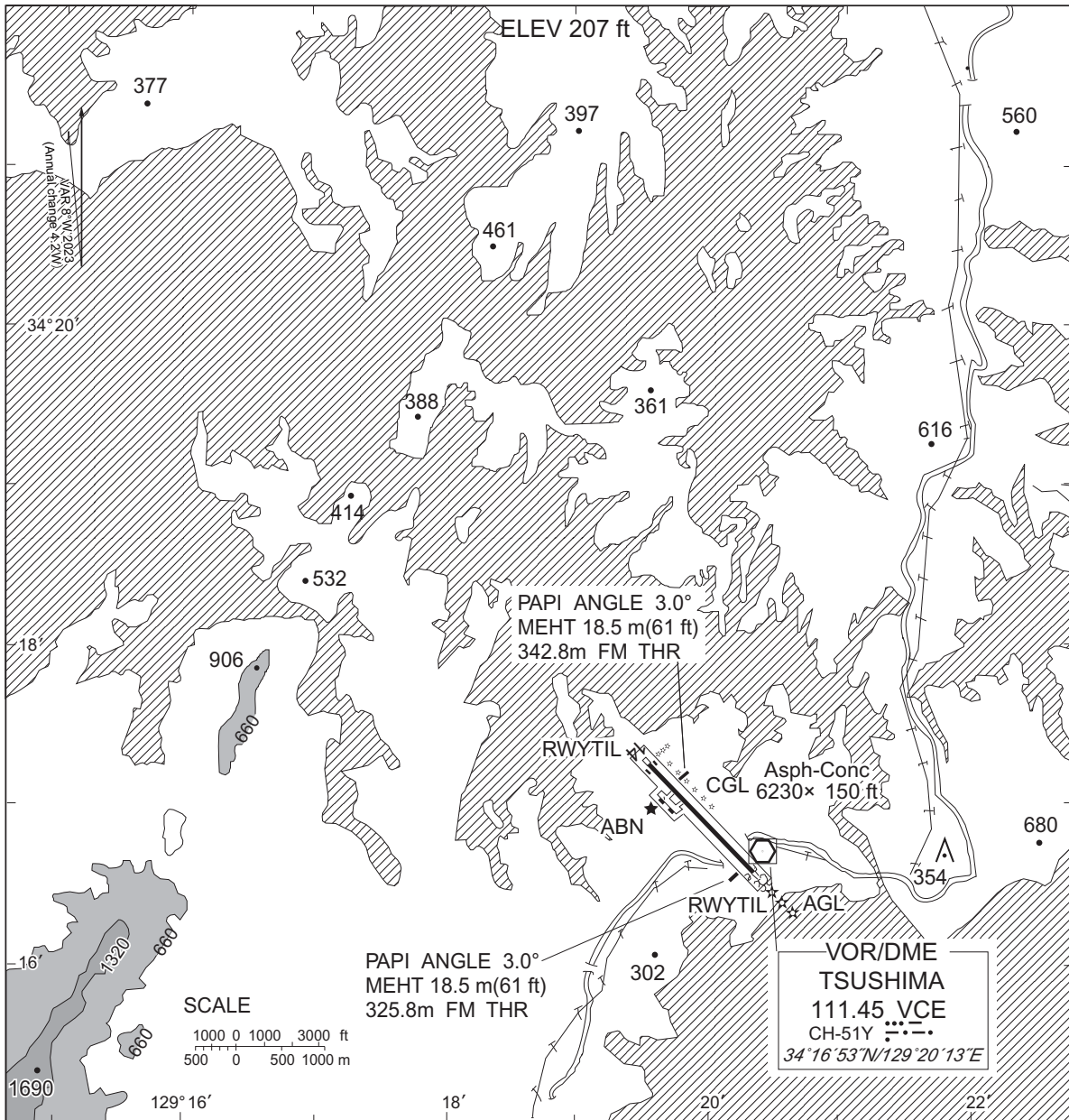
※図中に標高を示す数字がある場合、単位はメートル(m)である。The unit of measurement used to express elevation is meter(m).

CHANGE : VAR.

Call sign	BRG / DIST from ARP	Remarks
長崎鼻 Nagasakibana	023°T / 8.3NM	灯台 Lighthouse
厳原 Izuhara	200°T / 5.7NM	港 Harbor
10NM SE	135°T / 10.0NM	海上 Over the Sea

RJDT / TSUSHIMA

LDG CHART



CHANGE : VAR.

RJDT / TSUSHIMA

Minimum Vectoring Altitude CHART

