



STANDARD DEPARTURE CHART-INSTRUMENT

RJDU / OMURA

SID

OMURA NORTH THREE DEPARTURE

RWY 18: Climb RWY HDG to 700FT, turn right HDG016° to intercept and proceed via OLE R331 to PEARL...

RWY 36: Climb RWY HDG to 500FT, turn left HDG286° to intercept and proceed via OLE R331 to PEARL...

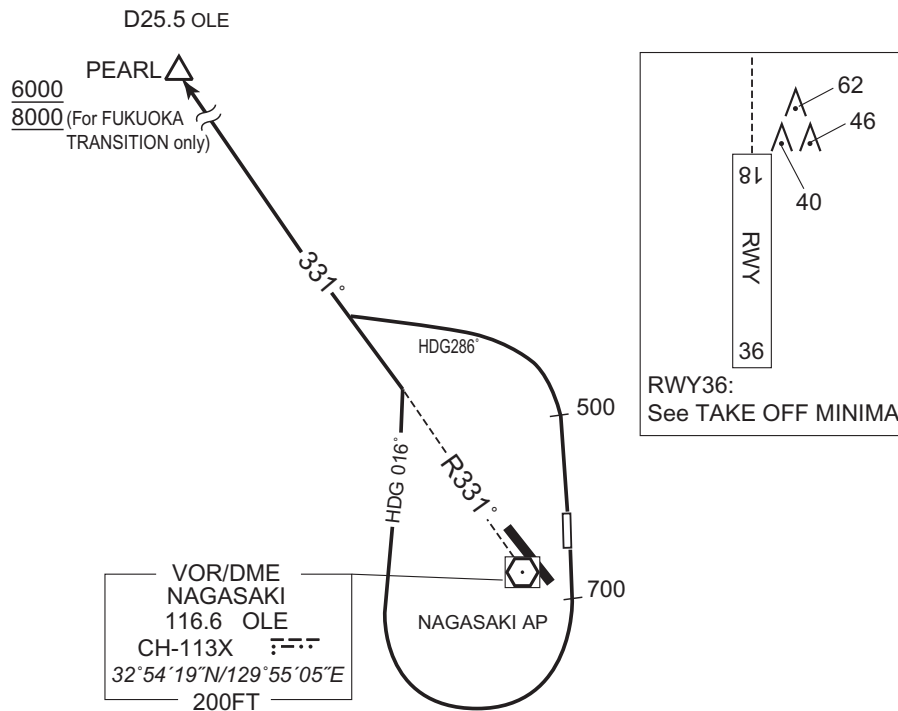
... Cross PEARL at or above 6000FT(\*).

\* For FUKUOKA TRANSITION : Cross PEARL at or above 8000FT.

NOTE RWY 18: 7.0% climb gradient required up to 2000FT.

OBST ALT 1634FT located at 4.7NM 213° FM end of RWY18.

RWY 36: 5.0% climb gradient required up to 500FT.



CHANGE : OBST.

STANDARD DEPARTURE CHART-INSTRUMENT

RJDU / OMURA

SID

OMURA WEST TWO DEPARTURE

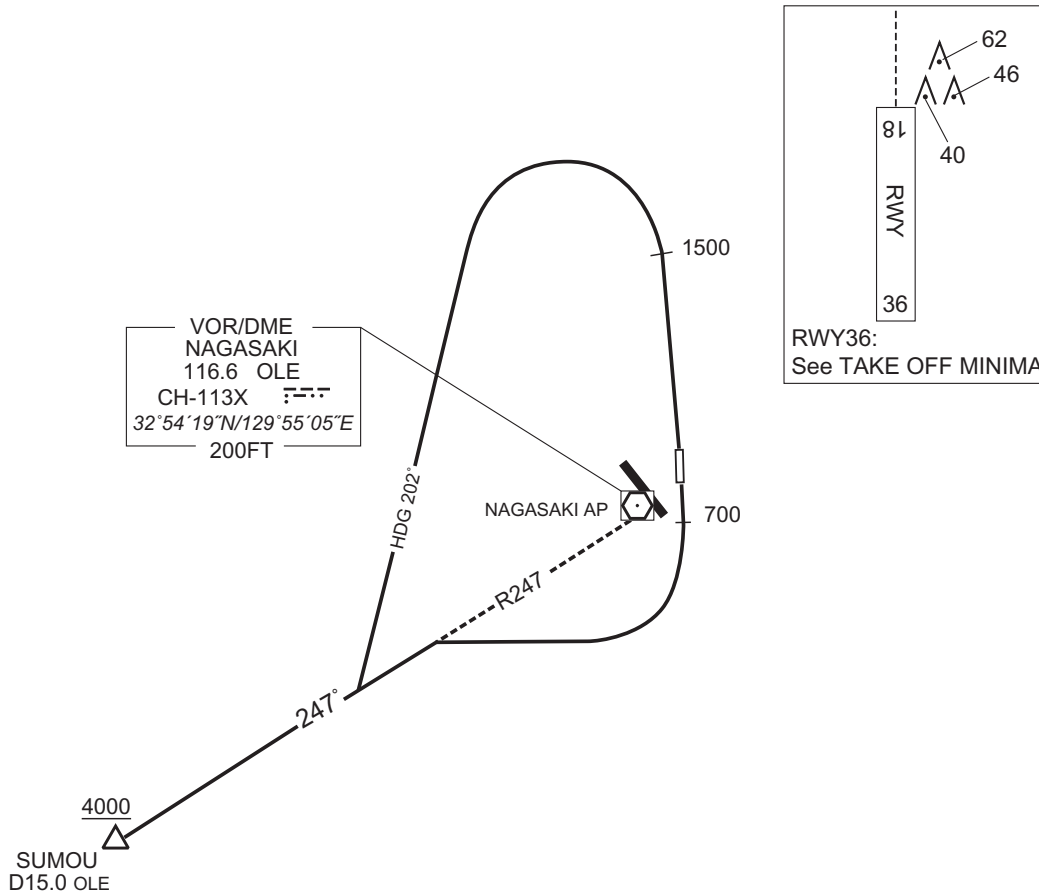
RWY 18: Climb RWY HDG to 700FT, turn right, climb via OLE R247...

RWY 36: Climb RWY HDG to 1500FT, turn left HDG202° to intercept and proceed via OLE R247...

... to SUMOU.

Cross SUMOU at or above 4000FT.

- Note RWY 18: 7.0% climb gradient required up to 2000FT.  
 OBST ALT 1635FT located at 4.7NM 213° FM end of RWY18.
- RWY 36: 5.0% climb gradient required up to 1500FT.  
 OBST ALT 1247FT located at 7.8NM 360° FM end of RWY36.



CHANGE : OBST.

STANDARD DEPARTURE CHART-INSTRUMENT

RJDU / OMURA

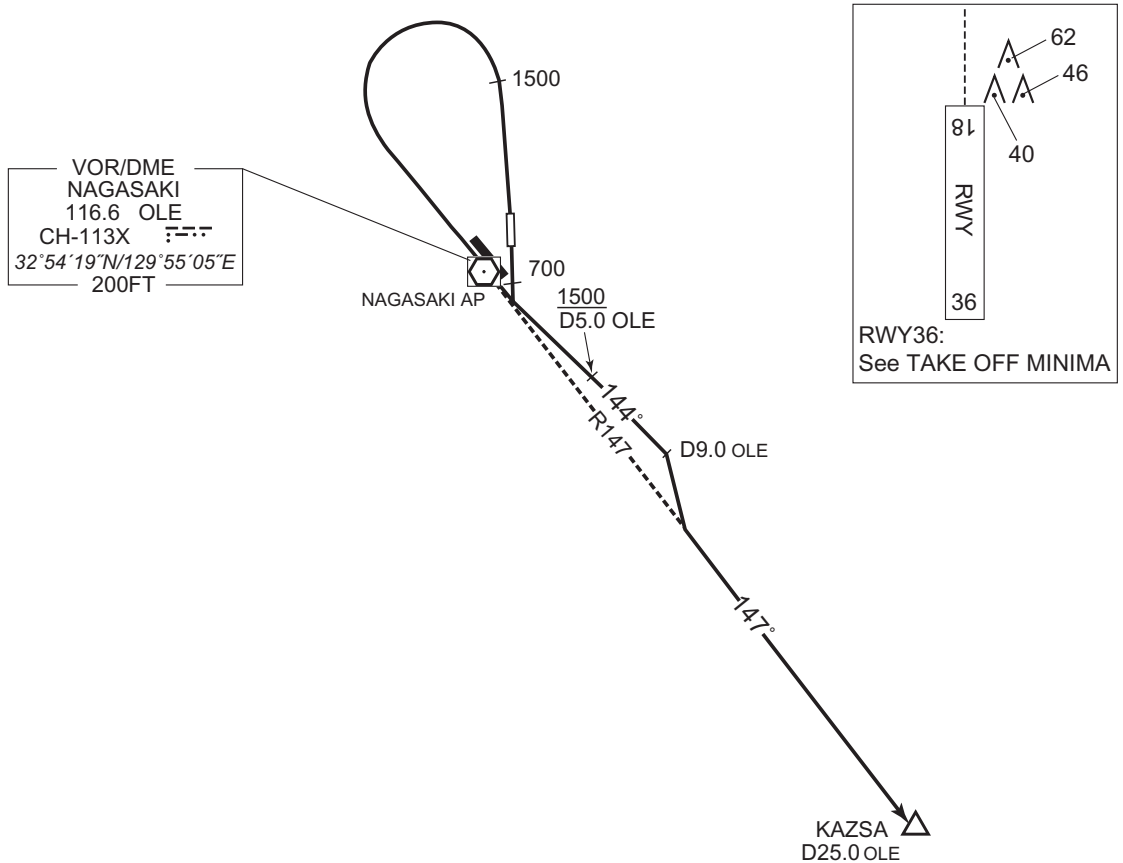
SID

OMURA SOUTH TWO DEPARTURE

RWY 18: Climb RWY HDG to 700FT, turn left, climb via OLE R144 to 9.0DME, turn right to intercept and proceed via OLE R147 to KAZSA. Cross OLE R144/5.0DME at or above 1500FT.

RWY 36: Climb RWY HDG to 1500FT, turn left, climb via OLE R144 to 9.0DME, turn right to intercept and proceed via OLE R147 to KAZSA.

Note RWY 18: 5.0% climb gradient required up to 1500FT.  
OBST ALT 1018FT located at 4.4NM 185° FM end of RWY18.  
RWY 36: 5.0% climb gradient required up to 1500FT.  
OBST ALT 1247FT located at 7.8NM 360° FM end of RWY36.



CHANGE : OBST.

STANDARD DEPARTURE CHART-INSTRUMENT

RJDU / OMURA

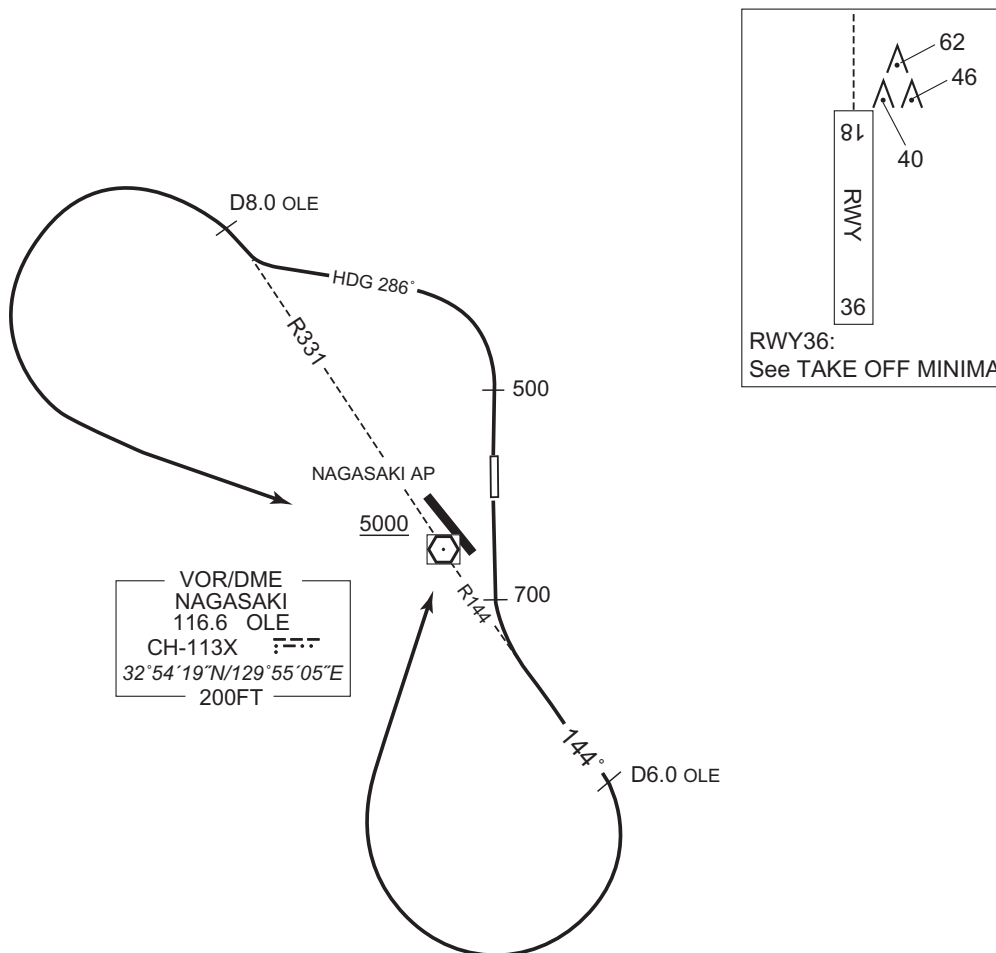
SID

OMURA REVERSAL TWO DEPARTURE

RWY 18: Climb RWY HDG to 700FT, turn left  
climb via OLE R144 to 6.0DME, turn right, direct to OLE VOR/DME.  
Cross OLE VOR/DME at or above 5000FT.

RWY 36: Climb RWY HDG to 500FT, turn left HDG286° to intercept  
and proceed via OLE R331 to 8.0DME  
turn left, direct to OLE VOR/DME.  
Cross OLE VOR/DME at or above 5000FT.

Note RWY 18: 5.0% climb gradient required up to 1800FT.  
OBST ALT 1018FT located at 4.4NM 185° FM end of RWY18.  
RWY 36: 5.0% climb gradient required up to 1800FT.  
OBST ALT 1969FT located at 9.6NM 270° FM end of RWY36.



CHANGE : OBST.

STANDARD DEPARTURE CHART - INSTRUMENT

RJDU / OMURA

TRANSITION

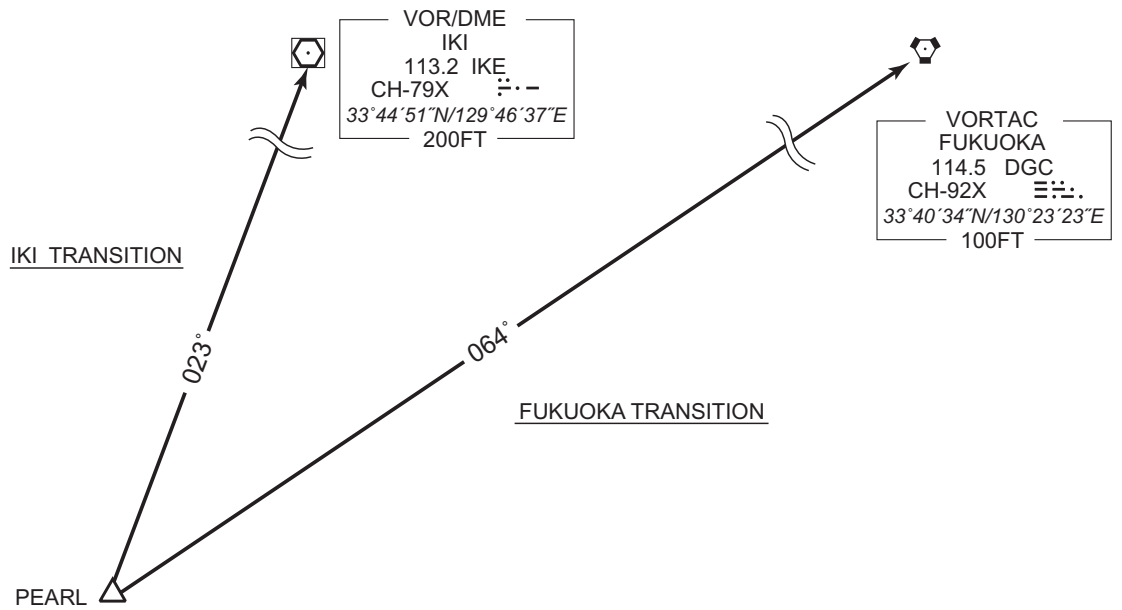
FUKUOKA TRANSITION

From over PEARL, via DGC R244 to DGC VORTAC.

Note : Not applicable for aircraft equipped with TACAN only.

IKI TRANSITION

From over PEARL, via IKE R203 to IKE VOR/DME.



CHANGE : Course FM PEARL to IKE.

STANDARD DEPARTURE CHART - INSTRUMENT

RJDU / OMURA

TRANSITION

FUKUE TRANSITION

From over SUMOU, turn right HDG308° to intercept and proceed via OLE R263 to FUE VOR/DME.

Maintain 12000FT or below until intercepting OLE R263.

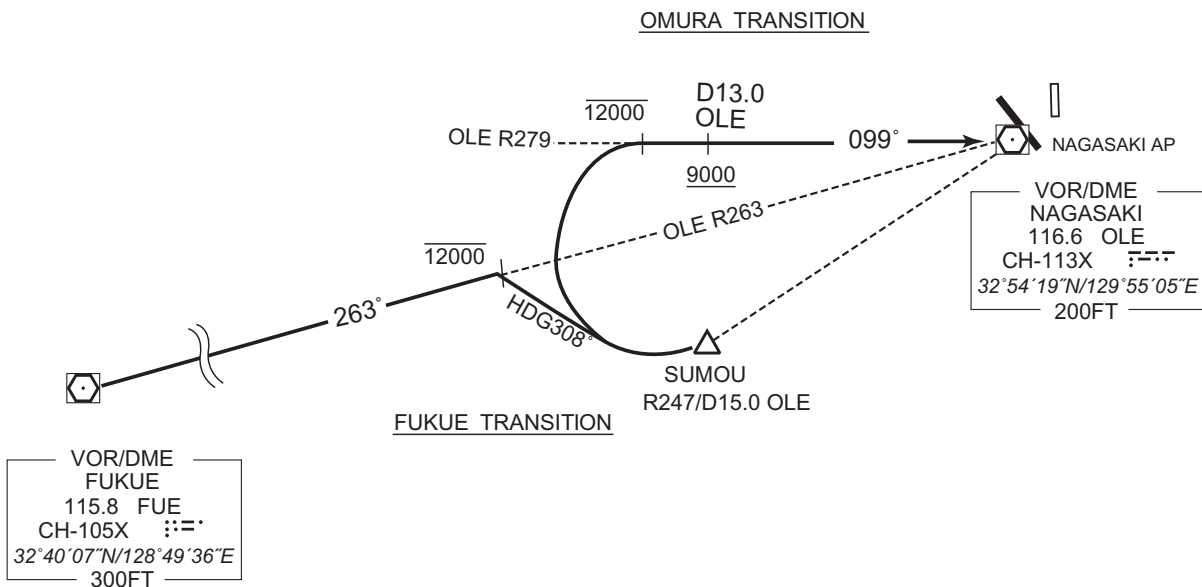
OMURA TRANSITION

From over SUMOU, turn right to intercept and proceed via OLE R279 to OLE VOR/DME.

Maintain 12000FT or below until intercepting OLE R279.

Cross OLE R279/13.0DME at or above 9000FT.

CHANGE : PROC course(FUKUE TRANSITION, OMURA TRANSITION). Radial/DIST FM OLE added(SUMOU).



STANDARD DEPARTURE CHART - INSTRUMENT

RJDU / OMURA

TRANSITION

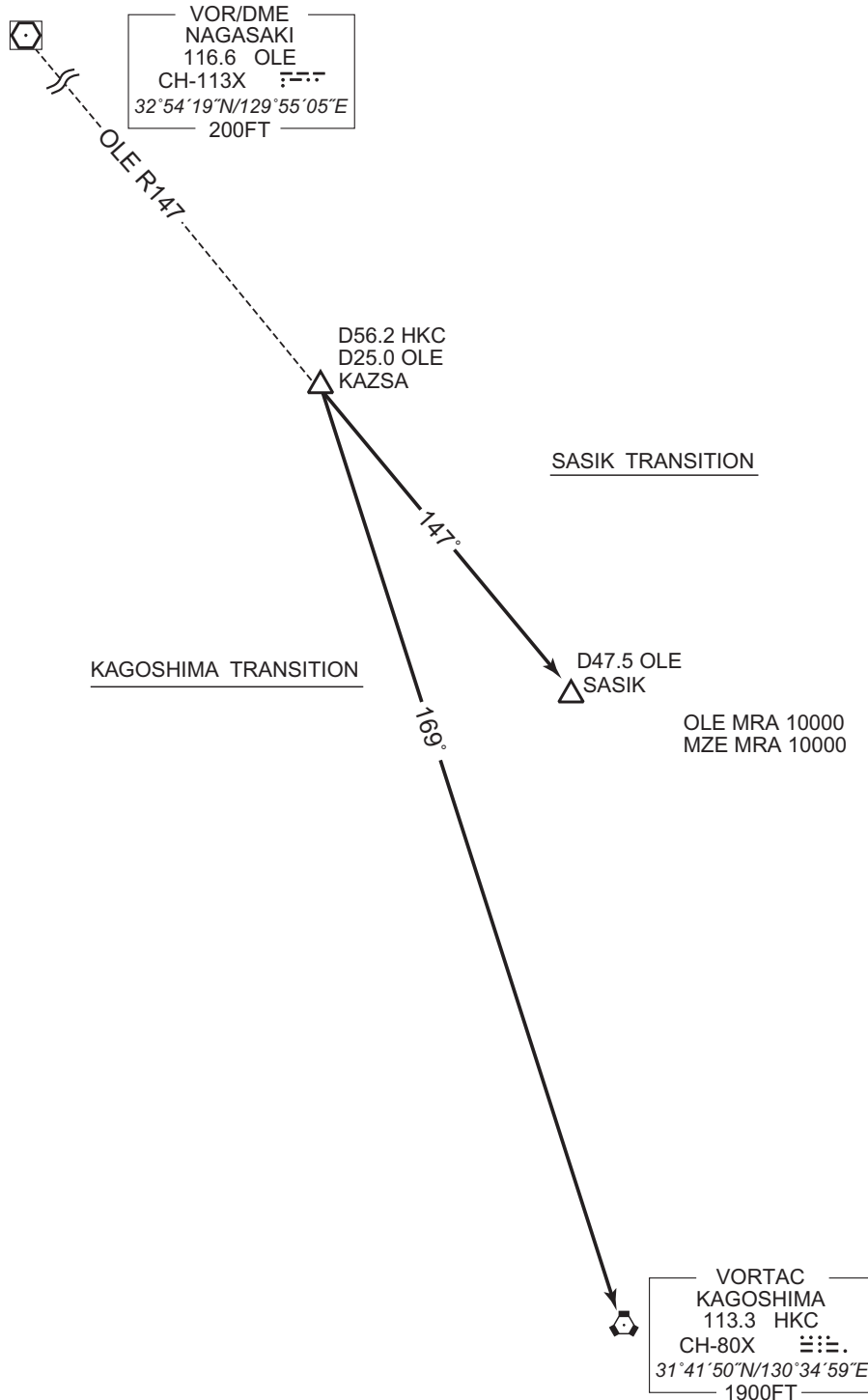
SASIK TRANSITION

From over KAZSA, via OLE R147 to SASIK.

KAGOSHIMA TRANSITION

From over KAZSA, via HKC R349 to HKC VORTAC.

CHANGE : Radial FM HKC. DIST FM HKC added(KAZSA).





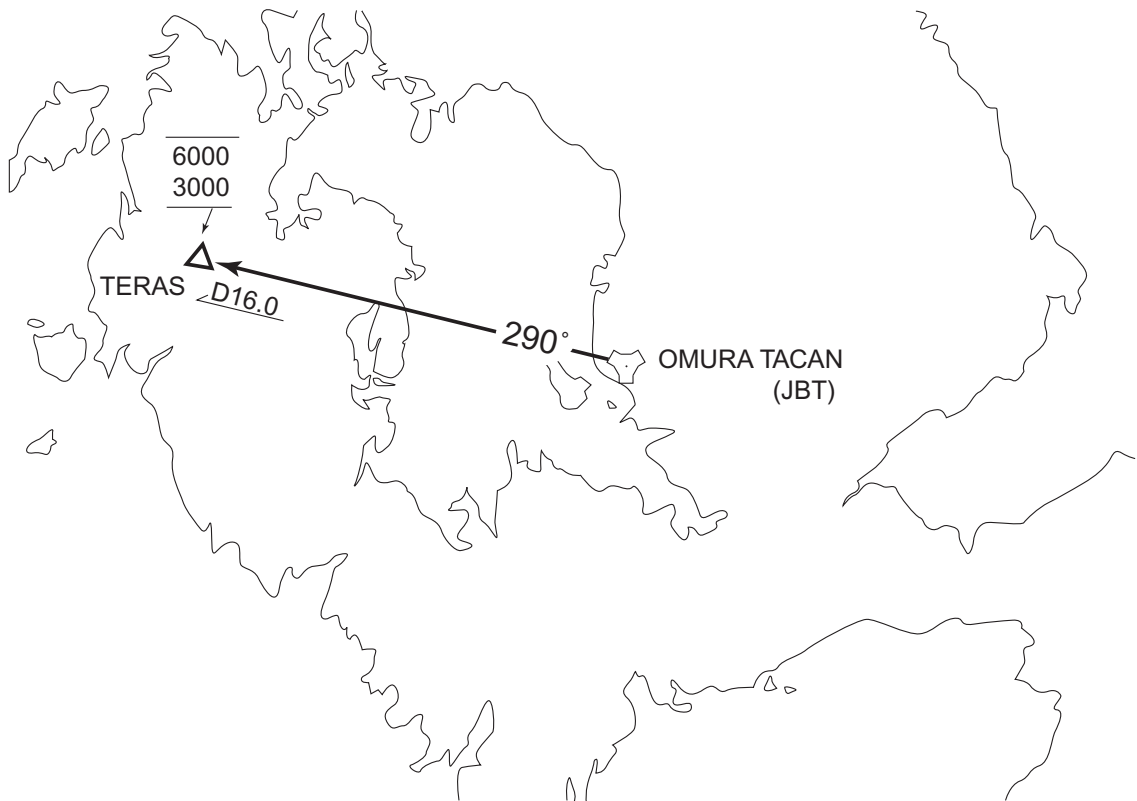
STANDARD ARRIVAL CHART-INSTRUMENT

RJDU / OMURA

STAR

OMURA ARRIVAL

From over JBT TACAN, proceed via JBT R290 to TERAS.  
Cross TERAS between 3000FT and 6000FT.



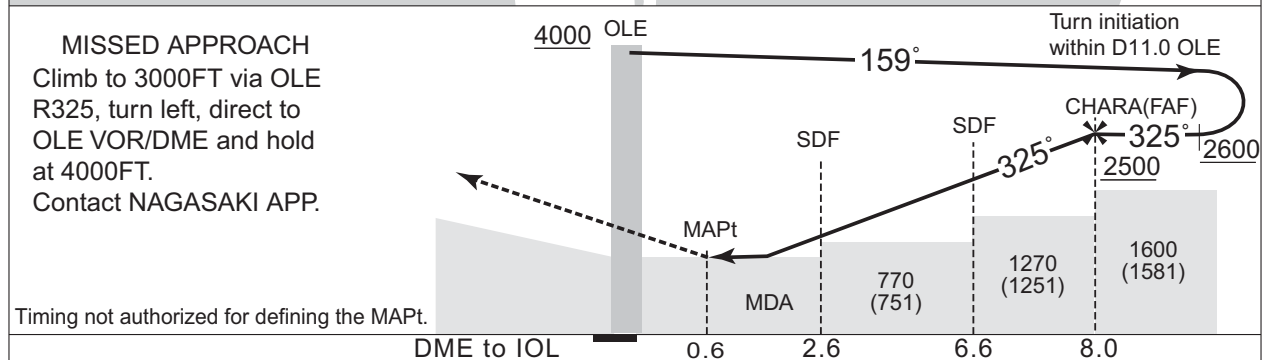
CHANGE : Description of PROC name.

INSTRUMENT APPROACH CHART

RJDU / OMURA

LOC C

|   |   |   |                   |
|---|---|---|-------------------|
| <p>NAGASAKI APP<br/>119.175 - 121.025<br/>261.2</p> | <p>ILS-LOC<br/>110.9 IOL <math>\dashv\vdash\vdash\vdash</math><br/>ILS-DME CH-46X</p> | <p>NAGASAKI TOWER<br/>118.5 - 126.2<br/>122.7 - 236.8</p> <p>2200 - 2245(UTC)<br/>1215 - 1300(UTC)<br/>NAGASAKI RADIO<br/>118.5<br/>AFIS provided by<br/>Fukuoka Airport Office</p> | <p>RADAR AVBL</p> |
|---|---|---|-------------------|



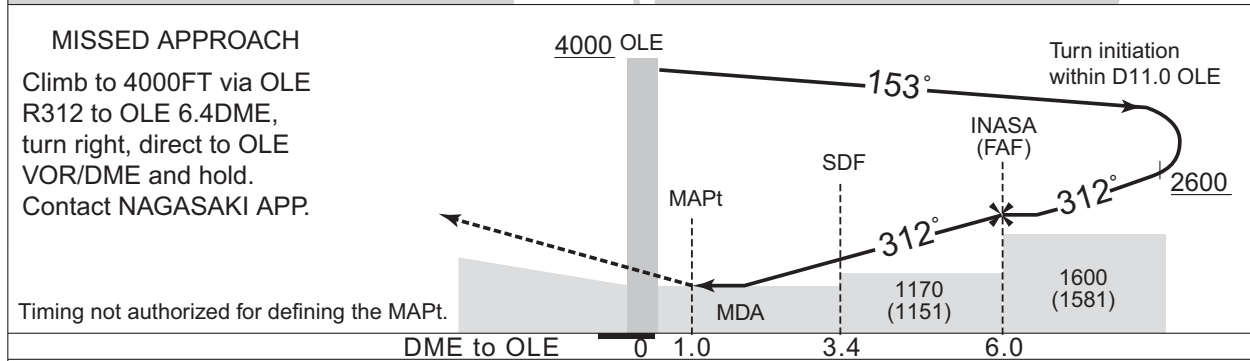
|                    |           |      |
|--------------------|-----------|------|
| MINIMA AD elev. 19 |           |      |
| CAT                | CIRCLING  |      |
|                    | MDA(H)    | VIS  |
| A                  | 620 (601) | 3200 |
| B                  |           |      |
| C                  | 860 (841) |      |
| D                  | -         | -    |

INSTRUMENT APPROACH CHART

RJDU / OMURA

VOR D

|   |  |   |                   |
|---|--|---|-------------------|
| <p>NAGASAKI APP<br/>119.175 - 121.025<br/>261.2</p> | <p>NAGASAKI VOR/DME<br/>116.6 OLE <math>\dashv\vdash\vdash\vdash</math><br/>CH-113X<br/>32°54'19"N/129°55'05"E</p> | <p>NAGASAKI TOWER<br/>118.5 - 126.2<br/>122.7 - 236.8</p> <p>2200 - 2245(UTC)<br/>1215 - 1300(UTC)<br/>NAGASAKI RADIO<br/>118.5<br/>AFIS provided by<br/>Fukuoka Airport Office</p> | <p>RADAR AVBL</p> |
|---|--|---|-------------------|

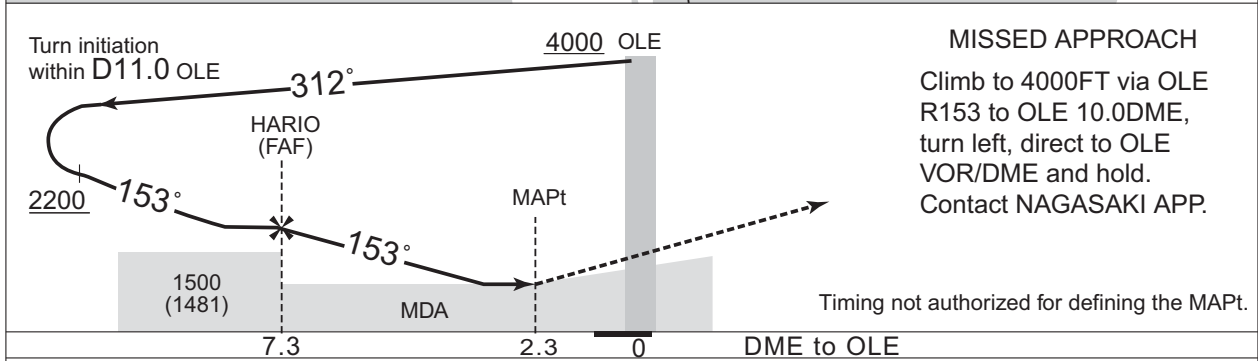
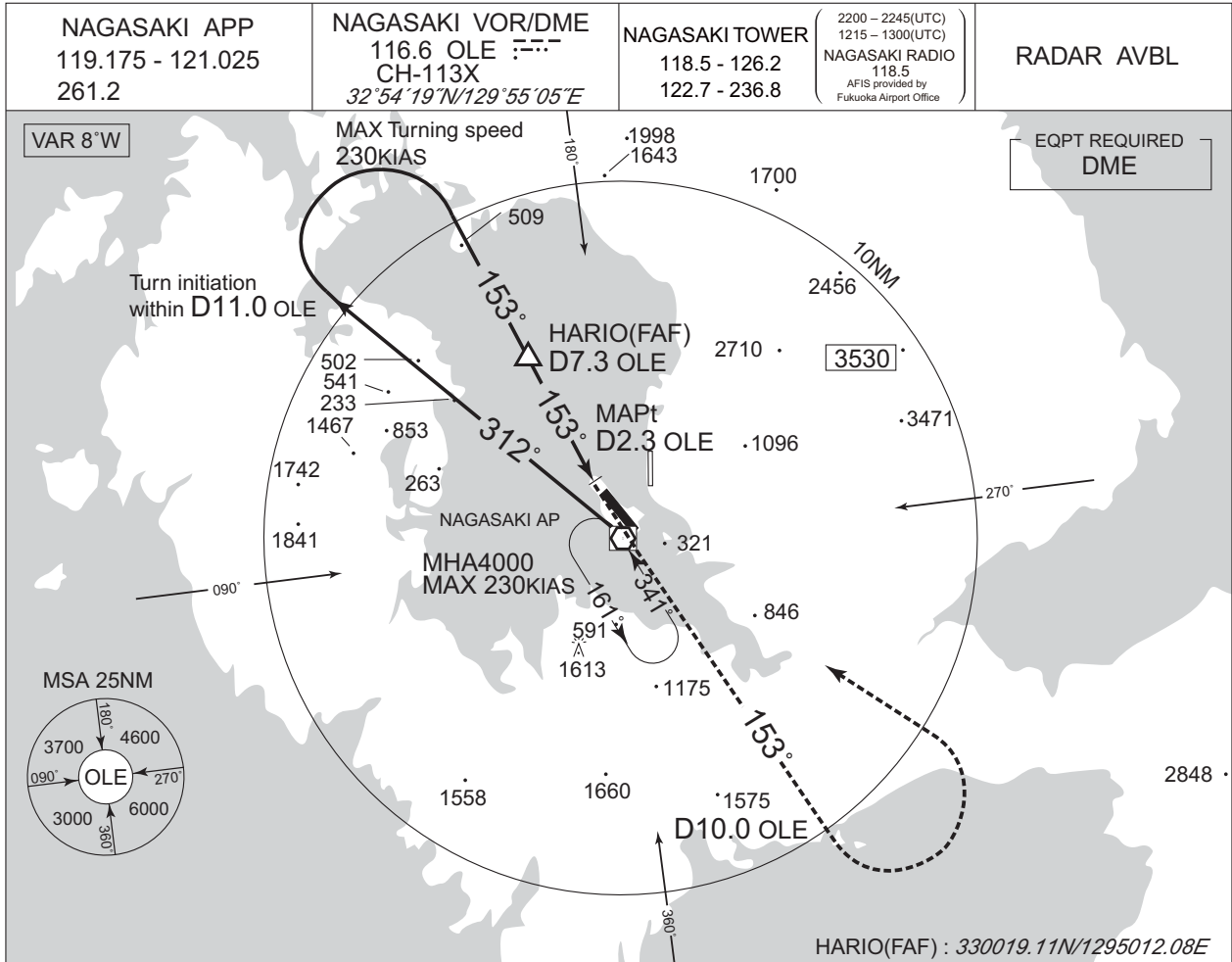


|                    |           |      |
|--------------------|-----------|------|
| MINIMA AD elev. 19 |           |      |
| CAT                | CIRCLING  |      |
|                    | MDA(H)    | VIS  |
| A                  | 620 (601) | 3200 |
| B                  |           |      |
| C                  |           |      |
| D                  | —         | —    |

INSTRUMENT APPROACH CHART

RJDU / OMURA

VOR E



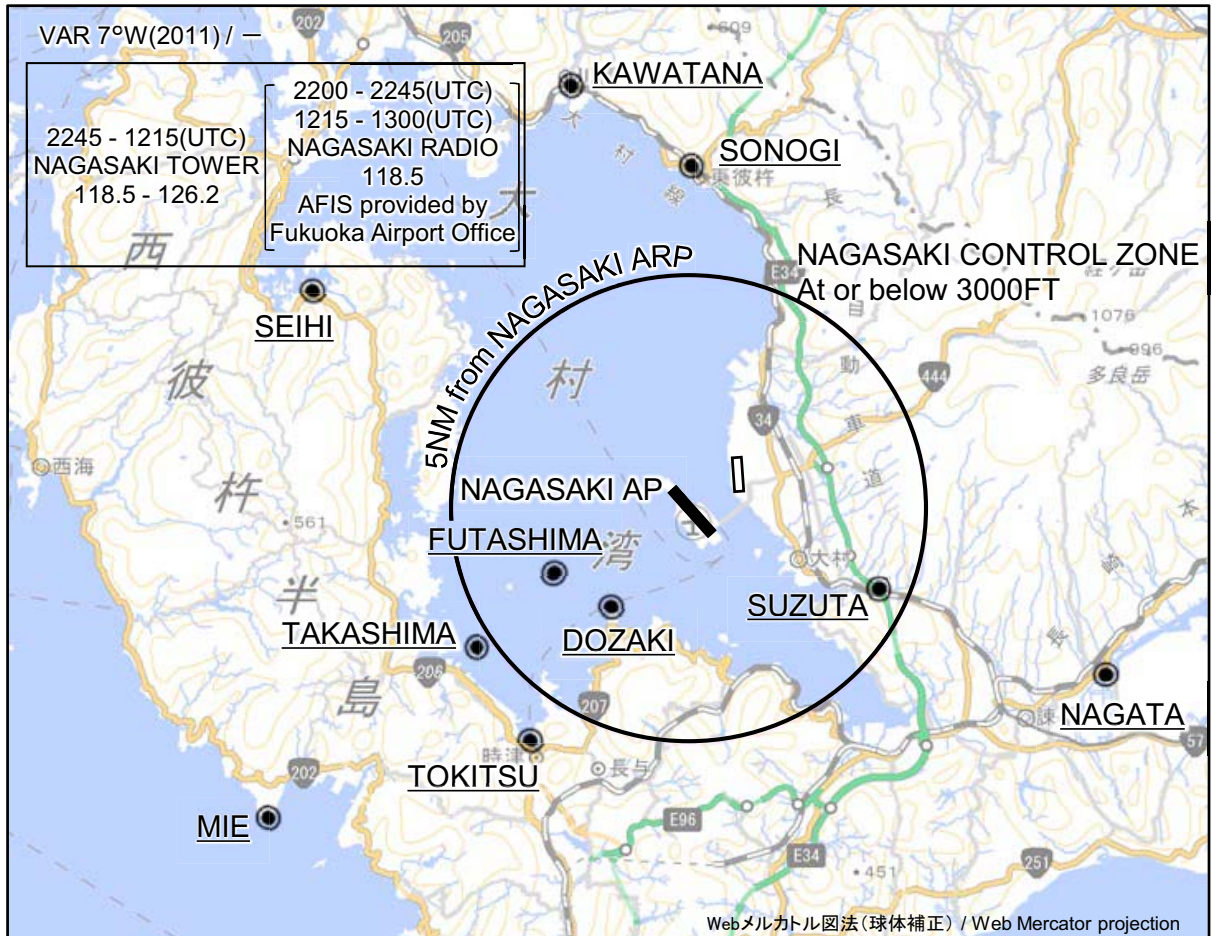
Missed APCH climb gradient MNM 3.0%

|                    |           |      |
|--------------------|-----------|------|
| MINIMA AD elev. 19 |           |      |
| CAT                | CIRCLING  |      |
|                    | MDA(H)    | VIS  |
| A                  | 620 (601) | 3200 |
| B                  | 860 (841) |      |
| C                  | -         |      |
| D                  | -         | -    |

**INTENTIONALLY LEFT BLANK**

RJDU / OMURA

Visual REP



※図中に標高を示す数字がある場合、単位はメートル(m)である。The unit of measurement used to express elevation is meter(m).

CHANGE : Map updated. BRG/DIST from NAGASAKI ARP.

| Call sign       | BRG / DIST from NAGASAKI ARP | Remarks                          |
|-----------------|------------------------------|----------------------------------|
| 川棚<br>Kawatana  | 345°T / 9.4NM                | JR駅<br>JR Station                |
| 彼杵<br>Sonogi    | 360°T / 7.4NM                | JR駅<br>JR Station                |
| 鈴田<br>Suzuta    | 113°T / 4.3NM                | 長崎自動車道と国道34号線の交点<br>Intersection |
| 長田<br>Nagata    | 112°T / 9.4NM                | 不知火橋<br>Bridge                   |
| 西彼<br>Seihi     | 301°T / 9.2NM                | オランダ村<br>Windmill                |
| 二島<br>Futashima | 244°T / 3.1NM                | 二島<br>Island                     |
| 堂崎<br>Dozaki    | 217°T / 2.7NM                | 堂崎鼻<br>A point of land           |
| 鷹島<br>Takashima | 237°T / 5.4NM                | 鷹島<br>Island                     |
| 時津<br>Tokitsu   | 213°T / 6.0NM                | 時津港<br>Harbor                    |
| 三重<br>Mie       | 233°T / 11.1NM               | 三重崎<br>A point of land           |