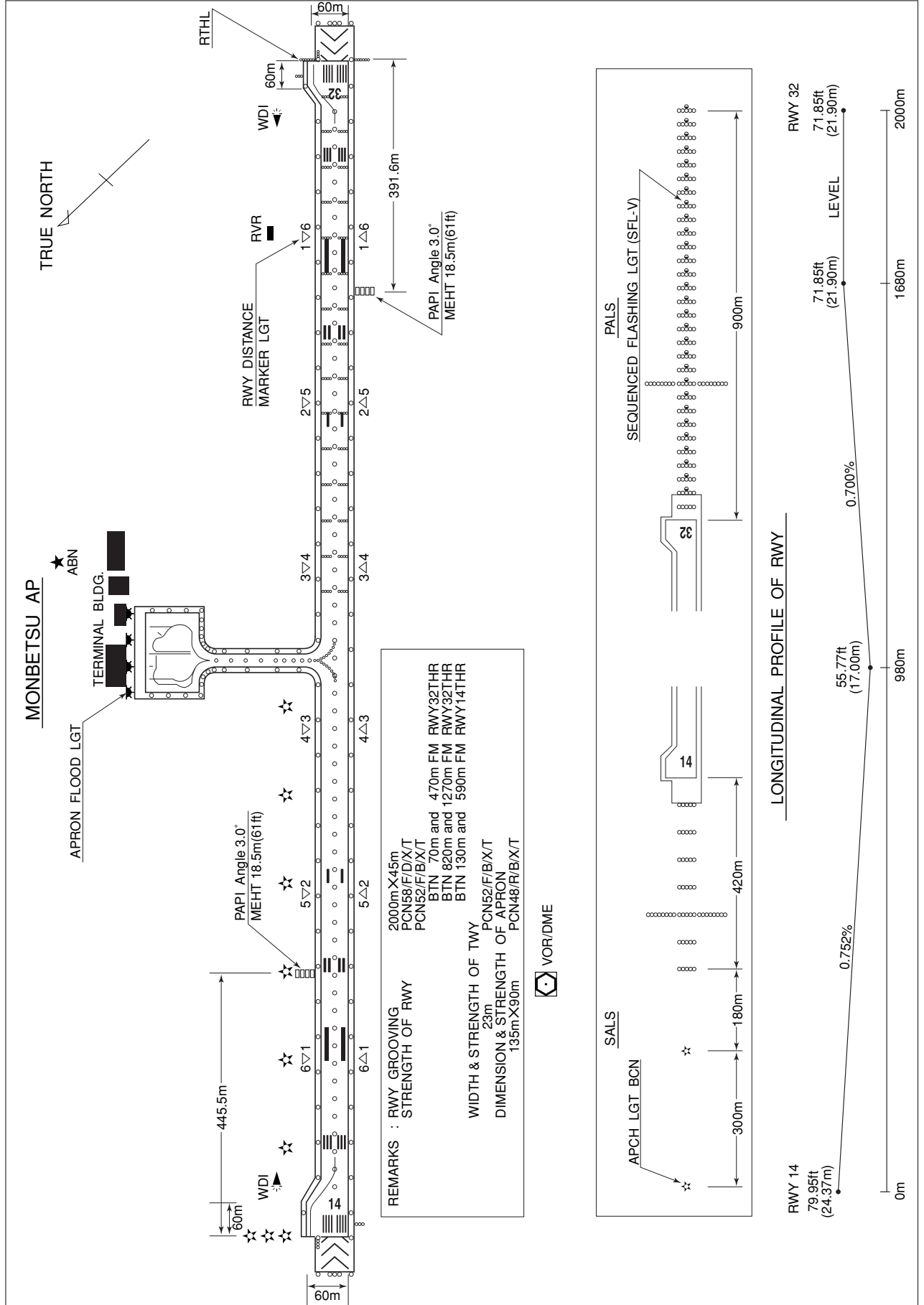


RJEB / MONBETSU

AD CHART



INTENTIONALLY LEFT BLANK

STANDARD DEPARTURE CHART-INSTRUMENT

RJEB / MONBETSU

SID and TRANSITION

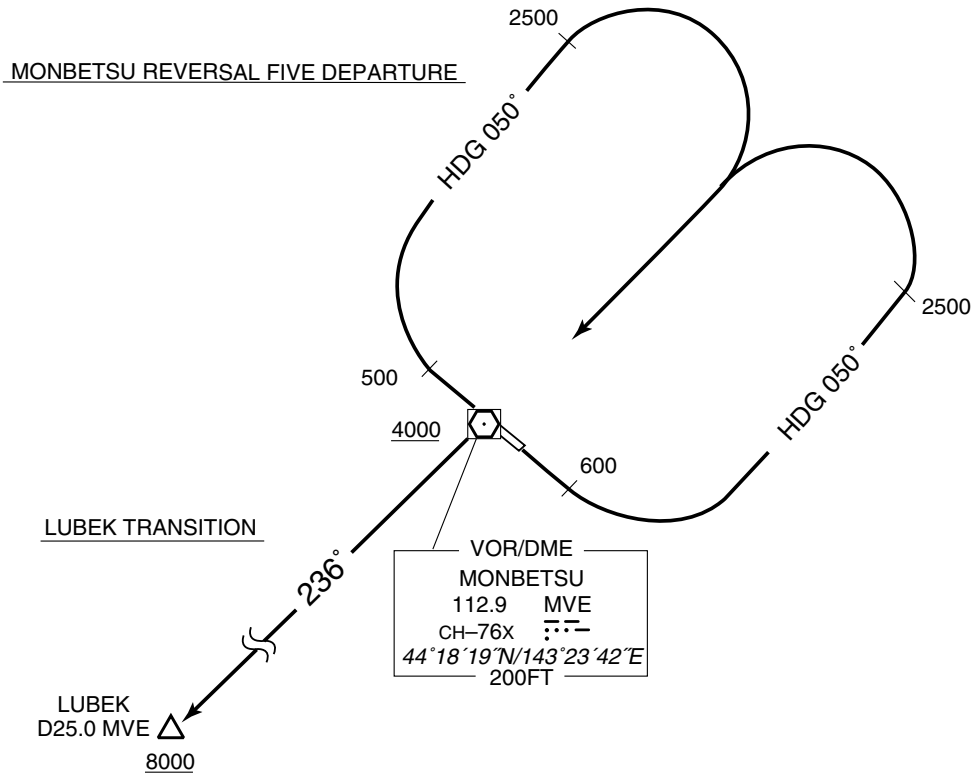
MONBETSU REVERSAL FIVE DEPARTURE

RWY14 : Climb RWY HDG to 600FT, turn left HDG050°, to 2500FT turn left,...
RWY32 : Climb RWY HDG to 500FT, turn right HDG050°, to 2500FT turn right,...
...direct to MVE VOR/DME.
Cross MVE VOR/DME at or above 4000FT.

Note RWY14 : 5.0% climb gradient required up to 900FT.
OBST ALT 591FT located at 2.7NM 156° FM end of RWY14.
RWY32: 4.3% climb gradient required up to 800FT.
OBST ALT 657FT located at 3.5NM 316° FM end of RWY32.

LUBEK TRANSITION

From over MVE VOR/DME, proceed via MVE R236 to LUBEK.
Cross LUBEK at or above 8000FT.



STANDARD DEPARTURE CHART-INSTRUMENT

RJEB / MONBETSU

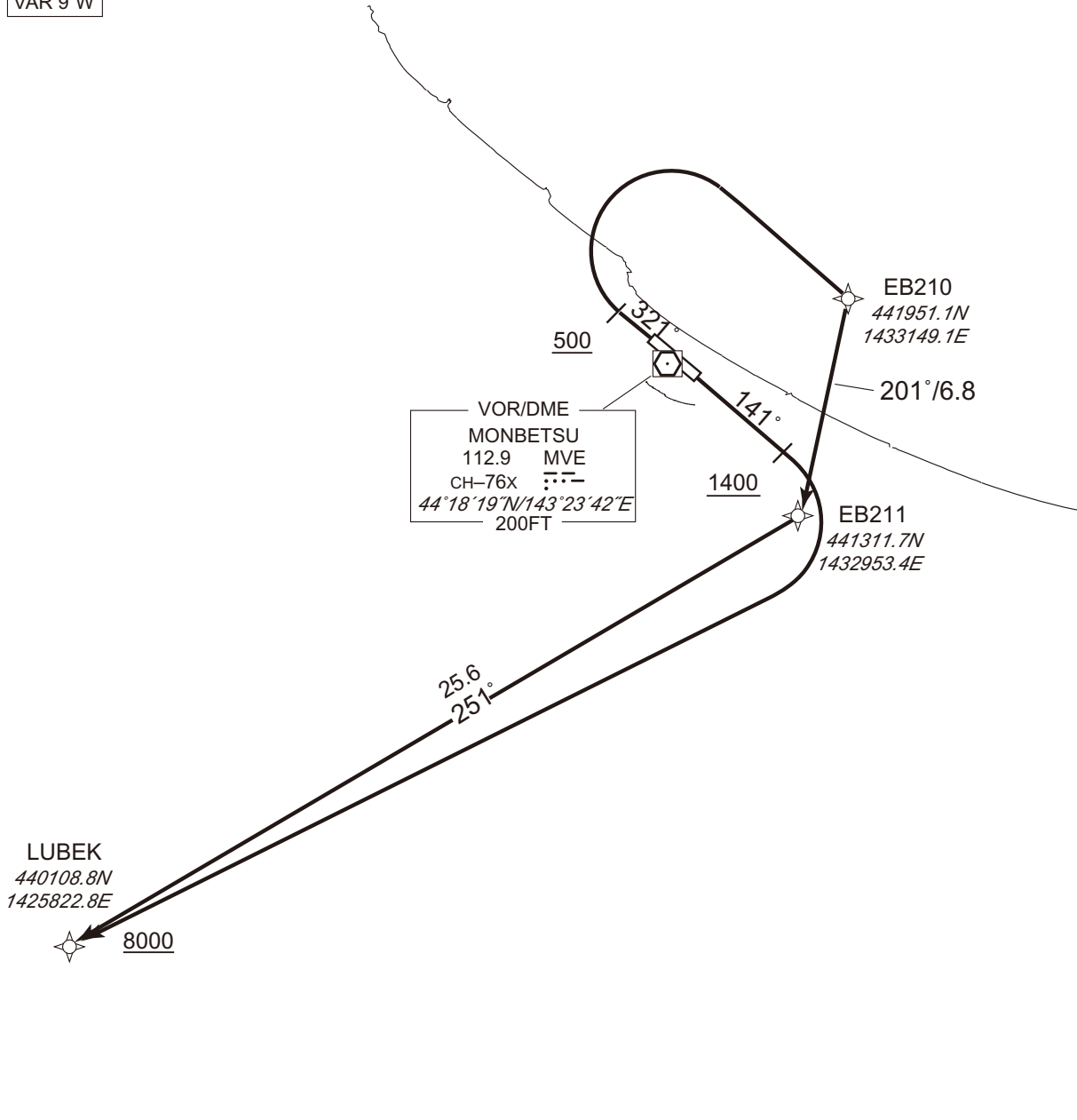
RNAV SID

LUBEK ONE DEPARTURE

RNP1

Note GNSS required.

VAR 9°W



CHANGE : Navigation Specification(Basic RNP1 → RNP1).

RWY14 : Climb on HDG141° at or above 1400FT, turn right direct to LUBEK at or above 8000FT.

RWY32 : Climb on HDG321° at or above 500FT, turn right direct to EB210, to EB211, to LUBEK at or above 8000FT.

Note RWY14 : 5.0% climb gradient required up to 1400FT.
OBST ALT 1182FT located at 2.9NM 172° FM end of RWY14.

RWY32 : 5.0% climb gradient required up to 700FT.
OBST ALT 657FT located at 3.4NM 318° FM end of RWY32.

STANDARD DEPARTURE CHART-INSTRUMENT

RJEB / MONBETSU

RNAV SID

LUBEK ONE DEPARTURE

RWY14

| Serial Number | Path Descriptor | Waypoint Identifier | Fly Over | Course °M(°T) | Magnetic Variation | Distance (NM) | Turn Direction | Altitude (FT) | Speed (KIAS) | Vertical Angle | Navigation Specification |
|---------------|-----------------|---------------------|----------|----------------|--------------------|---------------|----------------|---------------|--------------|----------------|--------------------------|
| 001 | VA | - | - | 141 (132.0) | -9.2 | - | - | +1400 | - | - | RNP1 |
| 002 | DF | LUBEK | - | - | -9.2 | - | R | +8000 | - | - | RNP1 |

RWY32

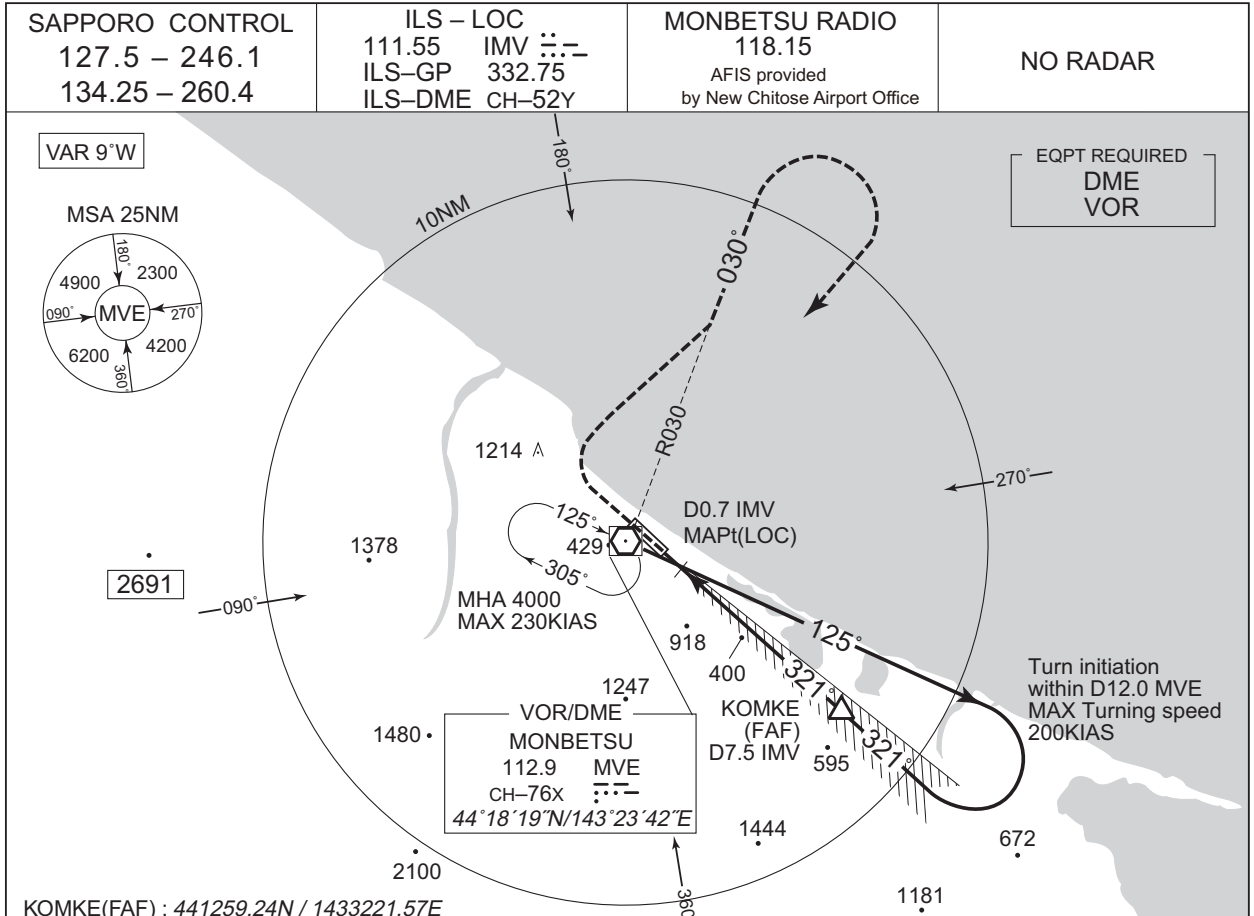
| Serial Number | Path Descriptor | Waypoint Identifier | Fly Over | Course °M(°T) | Magnetic Variation | Distance (NM) | Turn Direction | Altitude (FT) | Speed (KIAS) | Vertical Angle | Navigation Specification |
|---------------|-----------------|---------------------|----------|----------------|--------------------|---------------|----------------|---------------|--------------|----------------|--------------------------|
| 001 | VA | - | - | 321 (312.0) | -9.2 | - | - | +500 | - | - | RNP1 |
| 002 | DF | EB210 | - | - | -9.2 | - | R | - | - | - | RNP1 |
| 003 | TF | EB211 | - | 201 (191.7) | -9.2 | 6.8 | - | - | - | - | RNP1 |
| 004 | TF | LUBEK | - | 251 (242.1) | -9.2 | 25.6 | - | +8000 | - | - | RNP1 |

CHANGE : Navigation Specification(Basic RNP1 → RNP1).

INSTRUMENT APPROACH CHART

RJEB / MONBETSU

ILS or LOC RWY32



| | | | | | | | | |
|----------------------|------|-----|------|------|------|------|------|------|
| NM to IMV | MAPt | 2 | 3 | 4 | 5 | 6 | 7 | FAF |
| ALT (3.0° APCH Path) | - | 703 | 1022 | 1340 | 1659 | 1977 | 2296 | 2448 |

MISSED APPROACH

Turn right, climb via MVE R030 to 2500FT, turn right, direct to MVE VOR/DME and hold at 4000FT. Contact MONBETSU RADIO.

Timing not authorized for defining the MAPt. No turn before IMV 0.7DME.

*Not applicable for CAT D circling

Turn initiation within D12.0 MVE

MVE 4000

125°

MAPt (LOC)

*SDF (LOC)

2500 2448 (LOC)

KOMKE (FAF)

321°

2500

926

VDP (LOC)

GP 3.0°

321°

RDH 54

MDA 840 (782)

1800 (1742)

| | | | | | |
|------------|-----|-----|-----|-----|-----|
| DME to IMV | 0.2 | 0.7 | 1.5 | 2.7 | 7.5 |
| NM to THR | 0 | 0.5 | 1.3 | 2.5 | 7.3 |

Missed APCH climb gradient MNM 4.0%

| MINIMA | | THR elev. 72 | | AD elev. 58 | | |
|--------|-----------|--------------|-----------|-------------|-------------|------|
| CAT | CAT I | | LOC | | CIRCLING | |
| | DA(H) | RVR/CMV | MDA(H) | RVR/CMV | MDA(H) | VIS |
| A | 272 (200) | 550 | 510 (452) | 1000 | 510 (452) | 1600 |
| B | | | | 1200 | 530 (472) | |
| C | | | | 830 (772) | 2400 | |
| D | | | | 1600 | 1150 (1092) | |

Circling to NORTH side of RWY only.
MINIMA with Missed APCH climb gradient of 2.5% are not established.

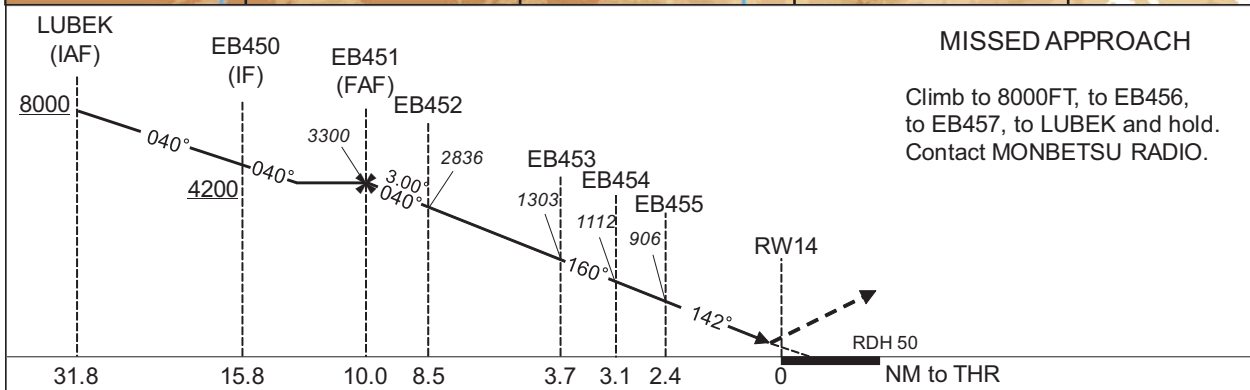
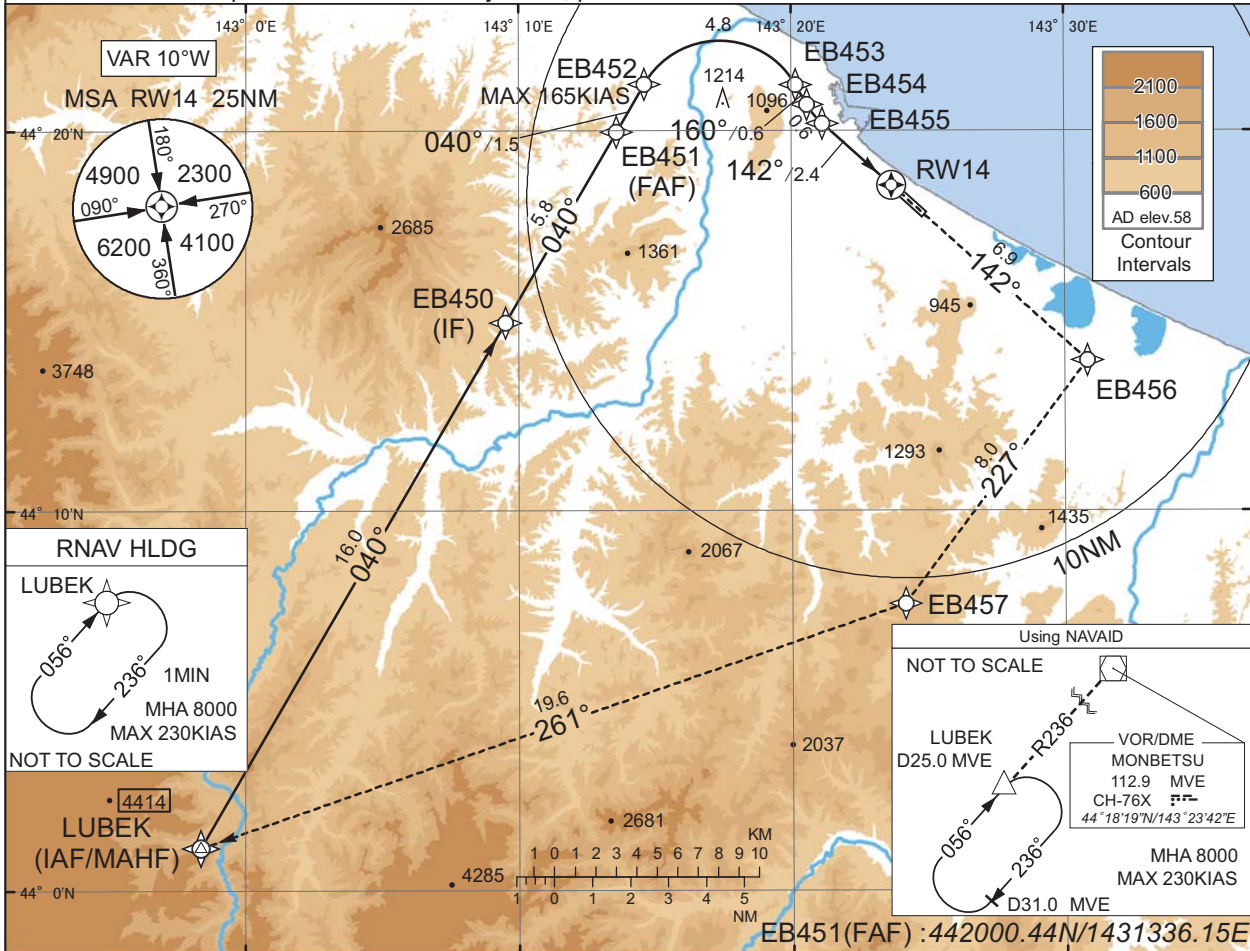
INSTRUMENT APPROACH CHART

RJEB / MONBETSU

RNP RWY14(AR)

| | | | |
|--|------------------------|--|----------|
| SAPPORO CONTROL 127.5 - 246.1 134.25 - 260.4 | RNP AR RF required. | MONBETSU RADIO 118.15 AFIS provided by New Chitose Airport Office | NO RADAR |
|--|------------------------|--|----------|

For uncompensated Baro-VNAV systems, procedure not authorized below -20°C / above 45°C



MISSED APPROACH
Climb to 8000FT, to EB456, to EB457, to LUBEK and hold. Contact MONBETSU RADIO.

Missed APCH climb gradient MNM 5.0%

| MINIMA | THR elev. 80 | | AD elev. 58 | |
|--------|--------------|------|-------------|------|
| | RNP 0.10 | | RNP 0.30 | |
| CAT | DA(H) | CMV | DA(H) | CMV |
| A | - | - | - | - |
| B | - | - | - | - |
| C | 384(304) | 1400 | 653(573) | 1600 |
| D | | 1600 | | 1800 |

MINIMA with Missed APCH climb gradient of 2.5% are not established.

Authorization Required

CHANGE : VAR. PROC course. Missed APCH course. RNAV HLDG established.

INSTRUMENT APPROACH CHART

RJEB / MONBETSU

RNP RWY14(AR)

Coding Table

| Serial Number | Path Descriptor | Waypoint Identifier | Fly Over | Course °M(°T) | Magnetic Variation | Distance (NM) | Turn Direction | Altitude (FT) | Speed (KIAS) | VPA/RDH (°/FT) | RNP Value |
|---------------|------------------------------------|---------------------|----------|----------------|--------------------|---------------|----------------|---------------|--------------|----------------|--------------|
| 001 | IF | LUBEK | - | - | -9.8 | - | - | +8000 | - | - | - |
| 002 | TF | EB450 | - | 040 (030.0) | -9.8 | 16.0 | - | +4200 | - | - | 1.0 |
| 003 | TF | EB451 | - | 040 (030.1) | -9.8 | 5.8 | - | 3300 | - | - | 1.0 |
| 004 | TF | EB452 | - | 040 (030.2) | -9.8 | 1.5 | - | 2836 | -165 | -3.00 | 0.10 0.30 |
| 005 | RF Center: EBRF1 r=2.30NM | EB453 | - | - | -9.8 | 4.8 | R | 1303 | - | -3.00 | 0.10 0.30 |
| 006 | TF | EB454 | - | 160 (150.4) | -9.8 | 0.6 | - | 1112 | - | -3.00 | 0.10 0.30 |
| 007 | RF Center: EBRF2 r=2.01NM | EB455 | - | - | -9.8 | 0.6 | L | 906 | - | -3.00 | 0.10 0.30 |
| 008 | TF | RW14 | Y | 142 (132.0) | -9.8 | 2.4 | - | 130 | - | -3.00/50 | 0.10 0.30 |
| 009 | TF | EB456 | - | 142 (132.0) | -9.8 | 6.9 | - | - | - | - | 1.0 |
| 010 | TF | EB457 | - | 227 (216.9) | -9.8 | 8.0 | - | - | - | - | 1.0 |
| 011 | TF | LUBEK | - | 261 (251.0) | -9.8 | 19.6 | - | 8000 | - | - | 1.0 |

CHANGE : VAR. PROC course. RNAV HLDG established. Missed APCH course.

| Path | Waypoint Identifier | Inbound Course °M(°T) | Magnetic Variation | Outbound Time (MIN) | Turn Direction | Minimum Altitude (FT) | Maximum Altitude (FT) | Speed (KIAS) | RNP Value |
|------|---------------------|-----------------------|--------------------|---------------------|----------------|-----------------------|-----------------------|------------------|-----------|
| Hold | LUBEK | 056 (046.6) | -9.8 | 1.0 (-14000) | R | 8000 | FL140 | -230 (-14000) | 1.0 |

Waypoint Coordinates

| Waypoint Identifier | Coordinates | RF Arc Center Identifier | Coordinates |
|---------------------|--------------------------|--------------------------|--------------------------|
| LUBEK | 440108.77N / 1425822.82E | EBRF1 | 442006.33N / 1431723.55E |
| EB450 | 441459.20N / 1430931.88E | EBRF2 | 442143.27N / 1432301.39E |
| EB451 | 442000.44N / 1431336.15E | | |
| EB452 | 442115.89N / 1431437.46E | | |
| EB453 | 442114.78N / 1432010.52E | | |
| EB454 | 442043.51N / 1432035.39E | | |
| EB455 | 442013.50N / 1432109.15E | | |
| RW14 | 441835.73N / 1432340.93E | | |
| EB456 | 441358.25N / 1433050.46E | | |
| EB457 | 440734.71N / 1432409.46E | | |

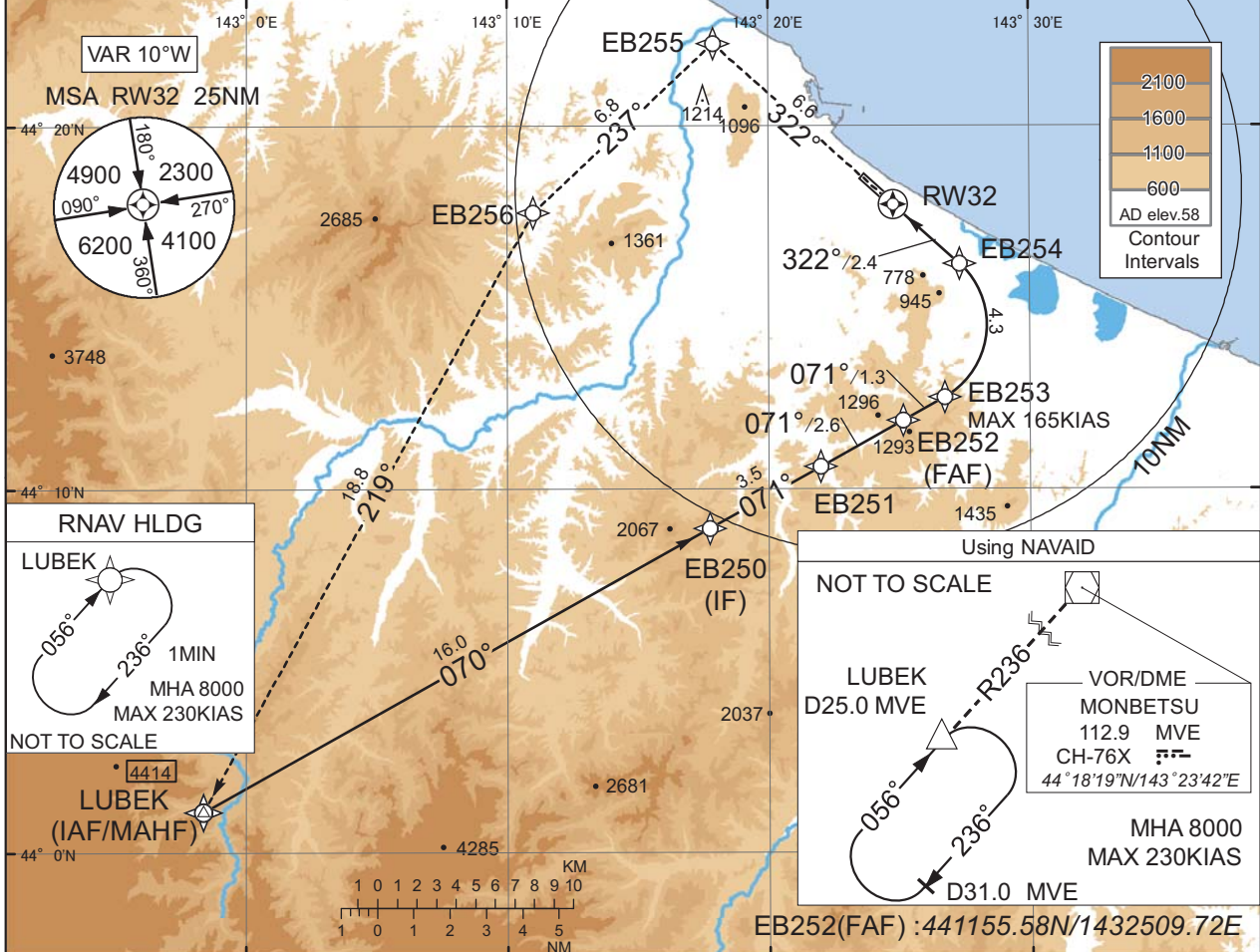
INSTRUMENT APPROACH CHART

RJEB / MONBETSU

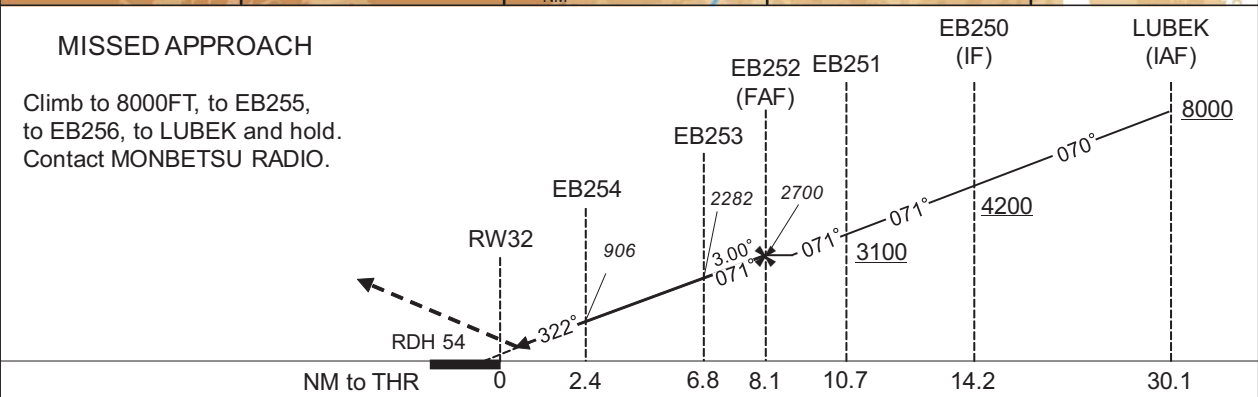
RNP RWY32(AR)

| | | | |
|--|------------------------|--|----------|
| SAPPORO CONTROL 127.5 - 246.1 134.25 - 260.4 | RNP AR RF required. | MONBETSU RADIO 118.15 AFIS provided by New Chitose Airport Office | NO RADAR |
|--|------------------------|--|----------|

For uncompensated Baro-VNAV systems, procedure not authorized below -20°C / above 45°C



CHANGE : VAR. PROC course. Missed APCH course. RNAV HLDG established.



Missed APCH climb gradient MNM 4.0%

| MINIMA | THR elev. 72 | | AD elev. 58 | |
|--------|--------------|---------|-------------|---------|
| | RNP 0.14 | | RNP 0.30 | |
| CAT | DA(H) | RVR/CMV | DA(H) | RVR/CMV |
| A | - | - | - | - |
| B | - | - | - | - |
| C | 372(300) | 1000 | 606(534) | 1200 |
| D | - | 1400 | - | 1600 |

MINIMA with Missed APCH climb gradient of 2.5% are not established.

Authorization Required

INSTRUMENT APPROACH CHART

RJEB / MONBETSU

RNP RWY32(AR)

Coding Table

| Serial Number | Path Descriptor | Waypoint Identifier | Fly Over | Course °M(°T) | Magnetic Variation | Distance (NM) | Turn Direction | Altitude (FT) | Speed (KIAS) | VPA/ RDH (°/FT) | RNP Value |
|---------------|------------------------------------|---------------------|----------|----------------|--------------------|---------------|----------------|---------------|--------------|-----------------|--------------|
| 001 | IF | LUBEK | - | - | -9.8 | - | - | +8000 | - | - | - |
| 002 | TF | EB250 | - | 070 (060.6) | -9.8 | 16.0 | - | +4200 | - | - | 1.0 |
| 003 | TF | EB251 | - | 071 (060.8) | -9.8 | 3.5 | - | +3100 | - | - | 1.0 |
| 004 | TF | EB252 | - | 071 (060.8) | -9.8 | 2.6 | - | 2700 | - | - | 1.0 |
| 005 | TF | EB253 | - | 071 (060.9) | -9.8 | 1.3 | - | 2282 | -165 | -3.00 | 0.14 0.30 |
| 006 | RF Center: EBRF3 r=2.27NM | EB254 | - | - | -9.8 | 4.3 | L | 906 | - | -3.00 | 0.14 0.30 |
| 007 | TF | RW32 | Y | 322 (312.1) | -9.8 | 2.4 | - | 126 | - | -3.00/54 | 0.14 0.30 |
| 008 | TF | EB255 | - | 322 (312.0) | -9.8 | 6.6 | - | - | - | - | 1.0 |
| 009 | TF | EB256 | - | 237 (226.8) | -9.8 | 6.8 | - | - | - | - | 1.0 |
| 010 | TF | LUBEK | - | 219 (208.8) | -9.8 | 18.8 | - | 8000 | - | - | 1.0 |

| Path | Waypoint Identifier | Inbound Course °M(°T) | Magnetic Variation | Outbound Time (MIN) | Turn Direction | Minimum Altitude (FT) | Maximum Altitude (FT) | Speed (KIAS) | RNP Value |
|------|---------------------|-----------------------|--------------------|---------------------|----------------|-----------------------|-----------------------|------------------|-----------|
| Hold | LUBEK | 056 (046.6) | -9.8 | 1.0 (-14000) | R | 8000 | FL140 | -230 (-14000) | 1.0 |

Waypoint Coordinates

| Waypoint Identifier | Coordinates | RF Arc Center Identifier | Coordinates |
|---------------------|--------------------------|--------------------------|--------------------------|
| LUBEK | 440108.77N / 1425822.82E | EBRF3 | 441432.89N / 1432513.59E |
| EB250 | 440857.66N / 1431745.13E | | |
| EB251 | 441039.77N / 1432200.05E | | |
| EB252 | 441155.58N / 1432509.72E | | |
| EB253 | 441233.80N / 1432645.48E | | |
| EB254 | 441614.19N / 1432720.26E | | |
| RW32 | 441752.44N / 1432448.06E | | |
| EB255 | 442218.71N / 1431754.45E | | |
| EB256 | 441739.47N / 1431100.00E | | |

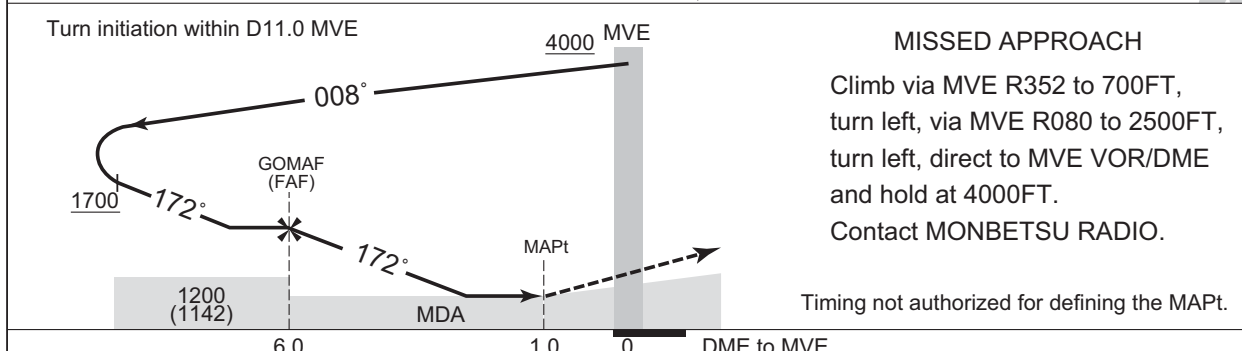
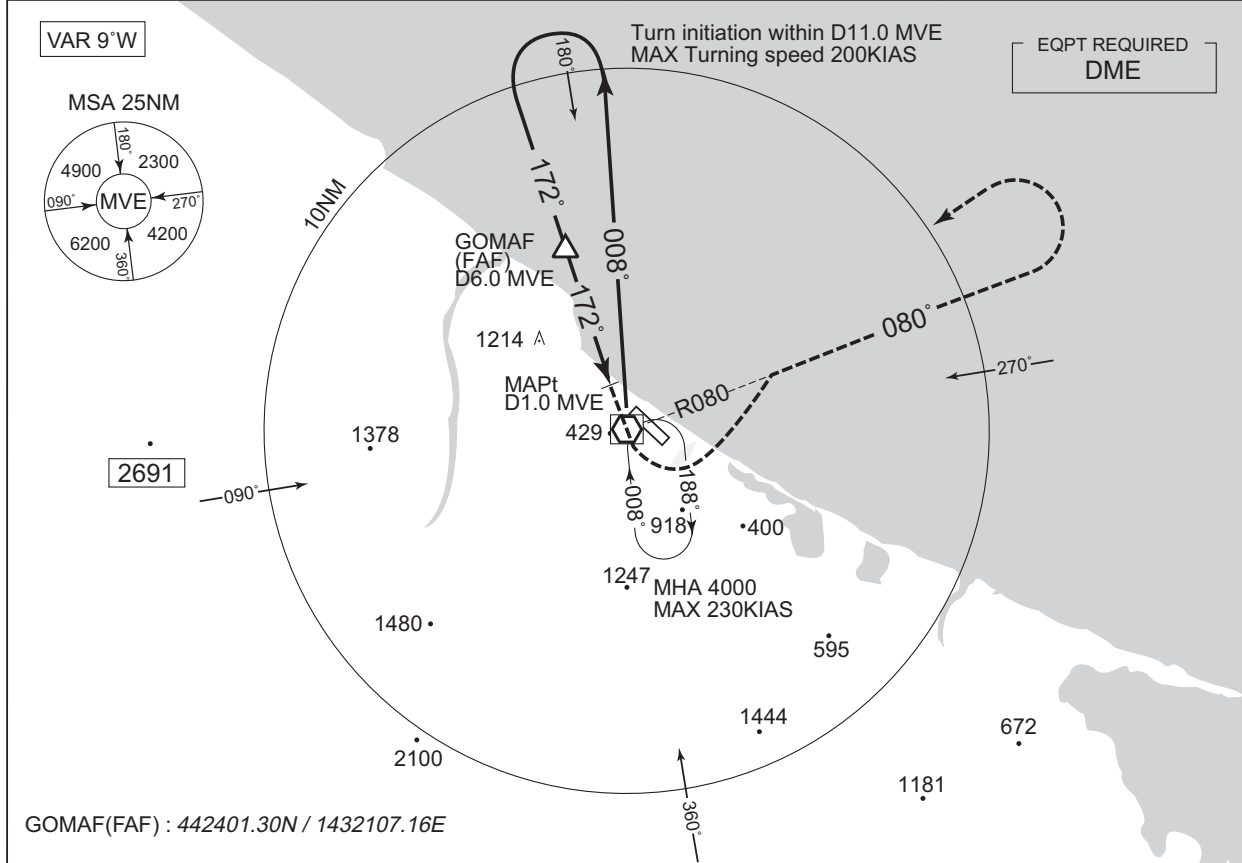
CHANGE : VAR. PROC course. RNAV HLDG established. Missed APCH course.

INSTRUMENT APPROACH CHART

RJEB / MONBETSU

VOR A

| | | | |
|--|---|--|----------|
| SAPPORO CONTROL 127.5 – 246.1 134.25 – 260.4 | MONBETSU VOR/DME 112.9 MVE CH-76X 44°18'19"N/143°23'42"E | MONBETSU RADIO 118.15 AFIS provided by New Chitose Airport Office | NO RADAR |
|--|---|--|----------|



Missed APCH climb gradient MNM 3.5%

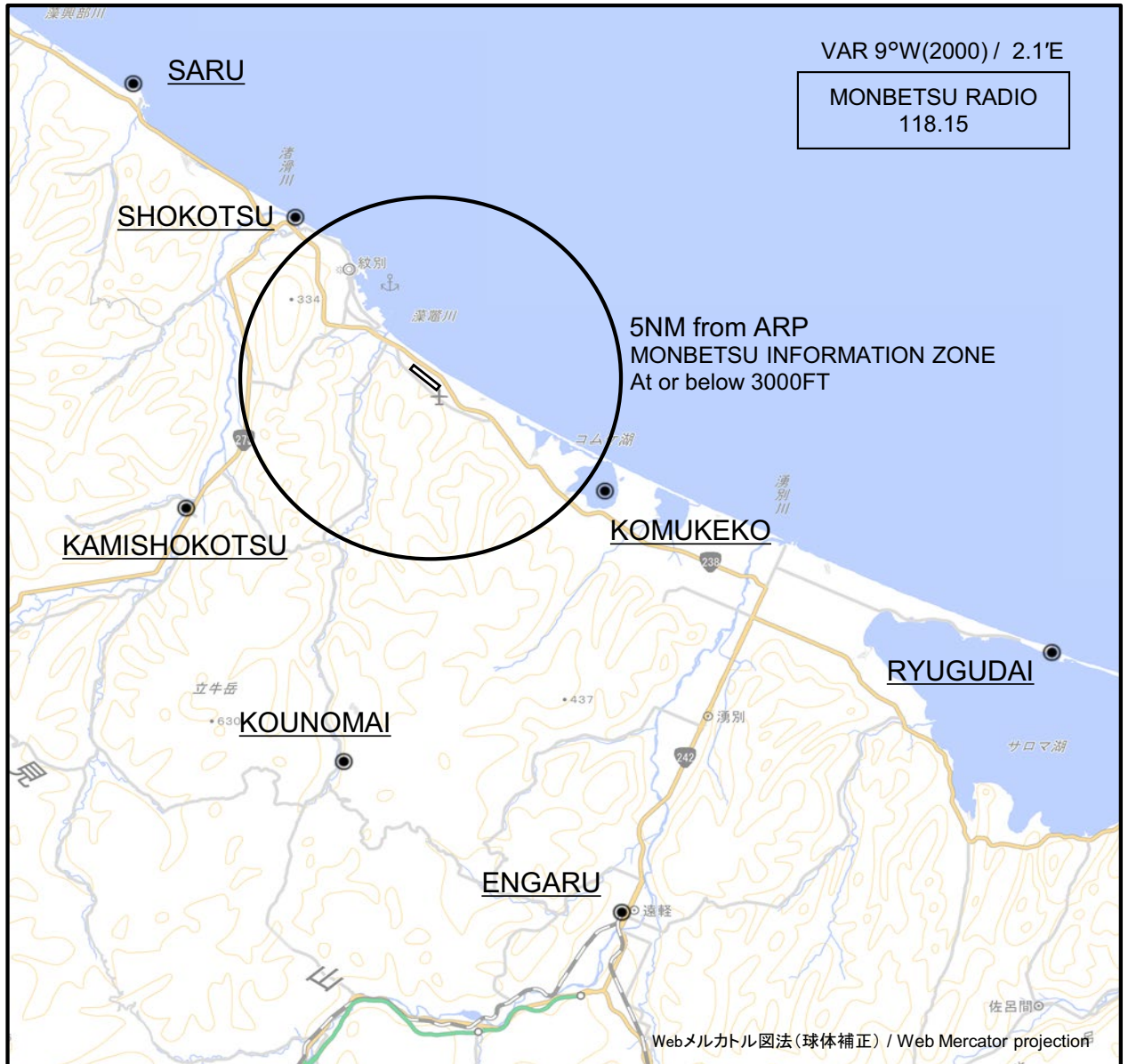
| | | |
|--------|-------------|-------------|
| MINIMA | | AD elev. 58 |
| CAT | CIRCLING | |
| | MDA(H) | VIS |
| A | 580 (522) | 1600 |
| B | 830 (772) | 2400 |
| C | 1150 (1092) | 3200 |

Circling to NORTH side of RWY only.
MINIMA with Missed APCH climb gradient of 2.5% are not established.

CHANGE : Description of VAR.

RJEB / MONBETSU

Visual REP



※図中に標高を示す数字がある場合、単位はメートル(m)である。The unit of measurement used to express elevation is meter(m).

CHANGE : Call sign(REMOTE→RADIO).

| Call sign | BRG / DIST from ARP | Remarks |
|---------------------|---------------------|----------------------------------|
| 沙留 Saru | 317°T / 11.3NM | 岬 Cape |
| 渚滑 Shokotsu | 323°T / 5.8NM | 渚滑川河口 Mouth of Shokotsu river |
| コムケ湖 Komukeko | 123°T / 5.5NM | 湖 Lake |
| 上渚滑 Kamishokotsu | 242°T / 7.3NM | 橋 Bridge |
| 竜宮台 Ryugudai | 114°T / 18.0NM | 灯台 Lighthouse |
| 鴻之舞 Kounomai | 193°T / 10.6NM | 発電所 Power Station |
| 遠軽 Engaru | 161°T / 15.5NM | 駅 JR Station |

RJEB / MONBETSU

Minimum Vectoring Altitude CHART

