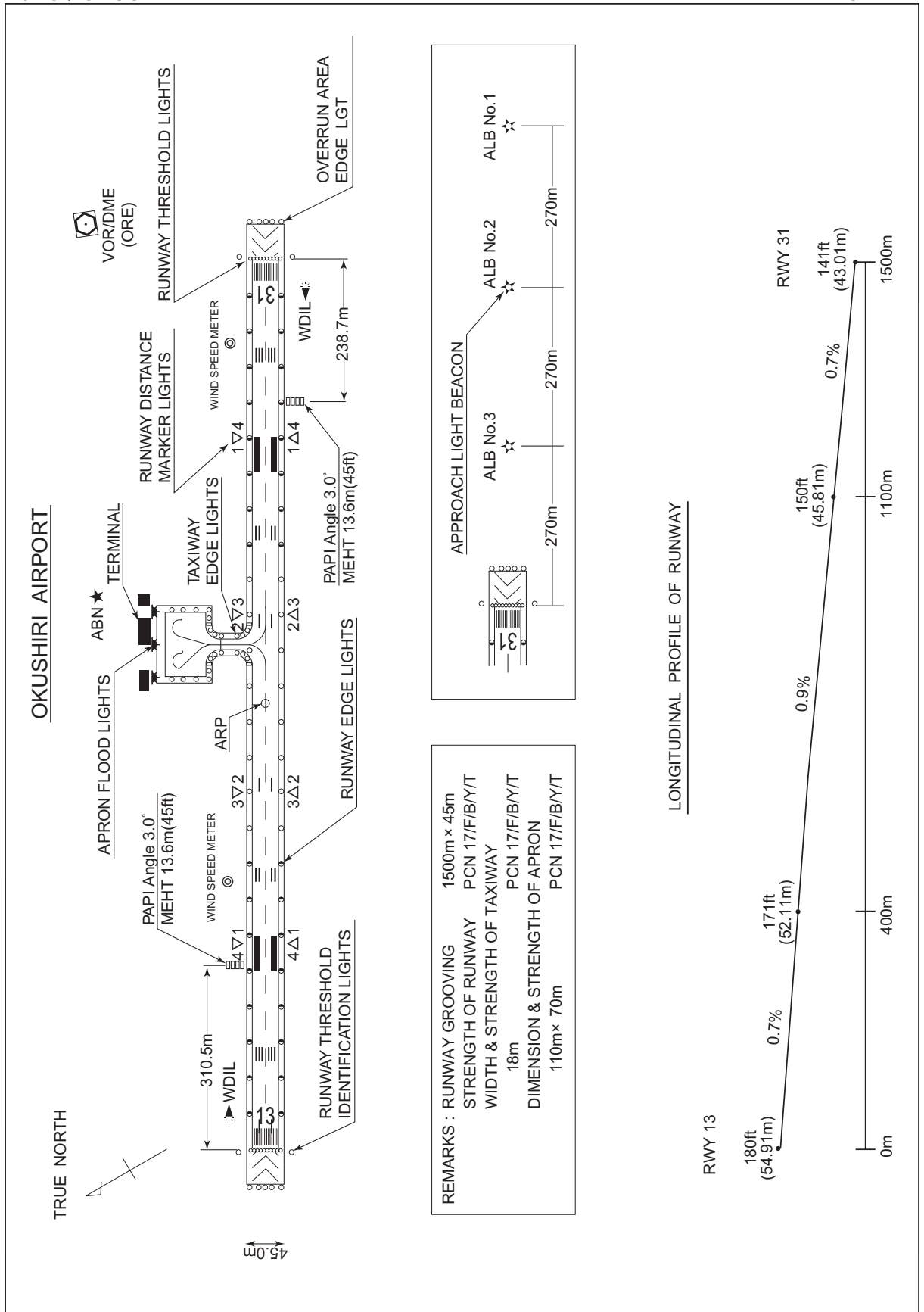


RJEO / OKUSHIRI

AD CHART

CHANGE : WIND SPEED METER added.



**INTENTIONALLY LEFT BLANK**

STANDARD DEPARTURE CHART - INSTRUMENT

RJEO / OKUSHIRI

SID

ESASI TWO DEPARTURE

RWY13 : Turn left,...

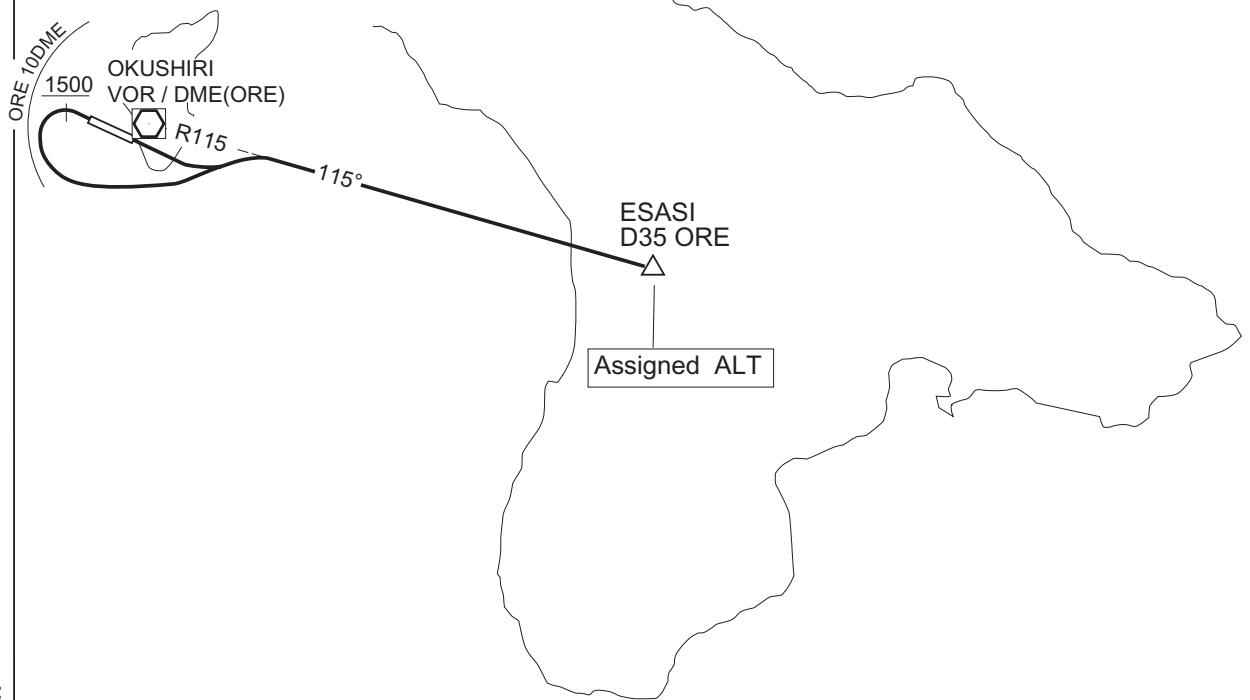
RWY31 : Climb via RWY HDG until 1500FT or above, complete left turn within  
ORE 10DME,...

...climb via ORE R115 to ESASI.

Cross ESASI at assigned or specified altitude.

Note : When take off from RWY13, following climb gradient should be  
maintained until 700FT.

Speed (Knots)	60	90	120	150	180	210
Rate (Feet/Min)	300	450	600	750	900	1050

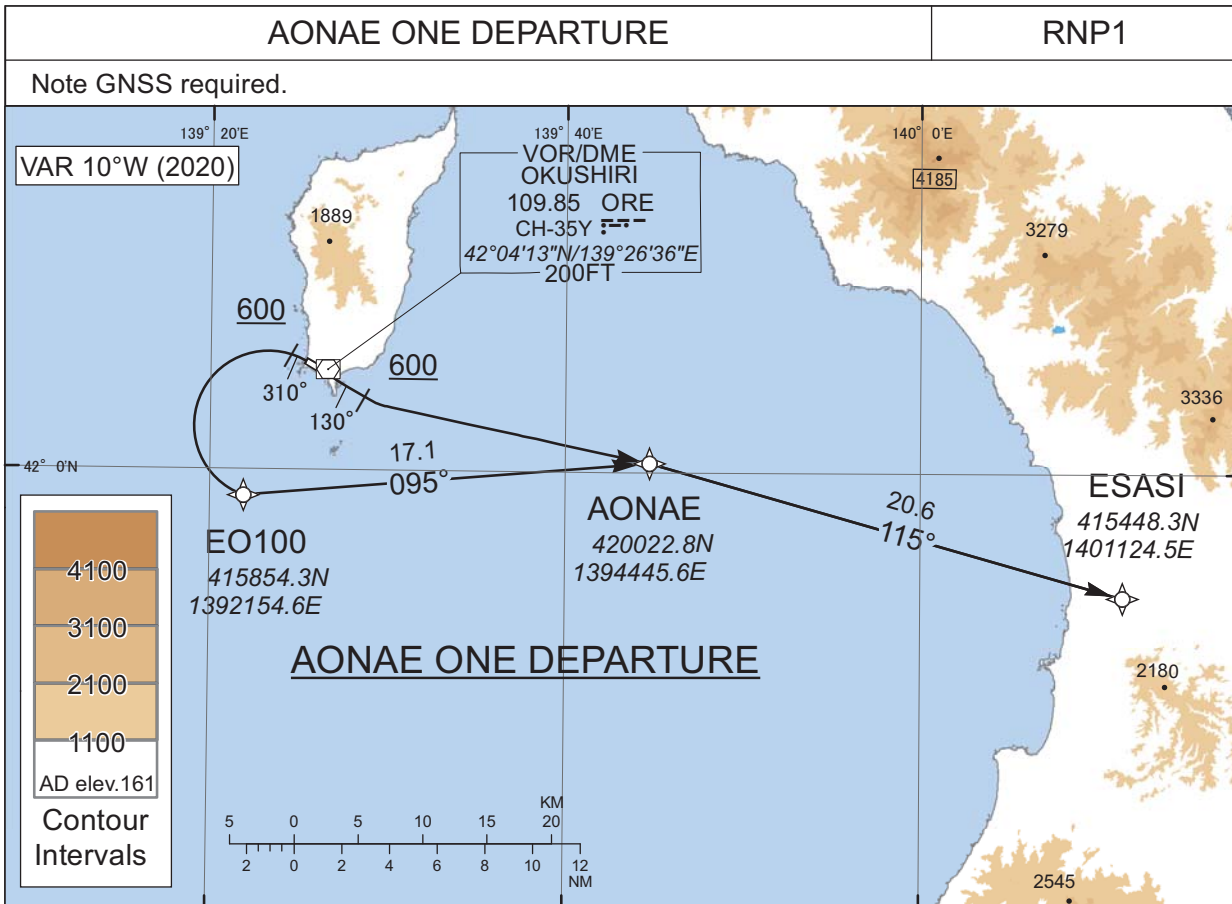


CHANGE : TAKE OFF MINIMA deleted.

STANDARD DEPARTURE CHART - INSTRUMENT

RJEO / OKUSHIRI

RNAV SID



**AONAE ONE DEPARTURE**

RWY13: Climb on HDG 130° at or above 600FT, turn left direct to AONAE, to ESASI.  
 RWY31: Climb on HDG 310° at or above 600FT, turn left direct to EO100, to AONAE, to ESASI.

Note RWY31: 4.5% climb gradient required up to 600FT.  
 OBST ALT 209FT located at 0.1NM 354° FM end of RWY31

**RWY13**

Serial Number	Path Descriptor	Waypoint Identifier	Fly Over	Course °M(°T)	Magnetic Variation	Distance (NM)	Turn Direction	Altitude (FT)	Speed (KIAS)	Vertical Angle	Navigation Specification
001	VA	-	-	130 (120.3)	-9.8	-	-	+600	-	-	RNP1
002	DF	AONAE	-	-	-9.8	-	L	-	-	-	RNP1
003	TF	ESASI	-	115 (105.6)	-9.8	20.6	-	-	-	-	RNP1

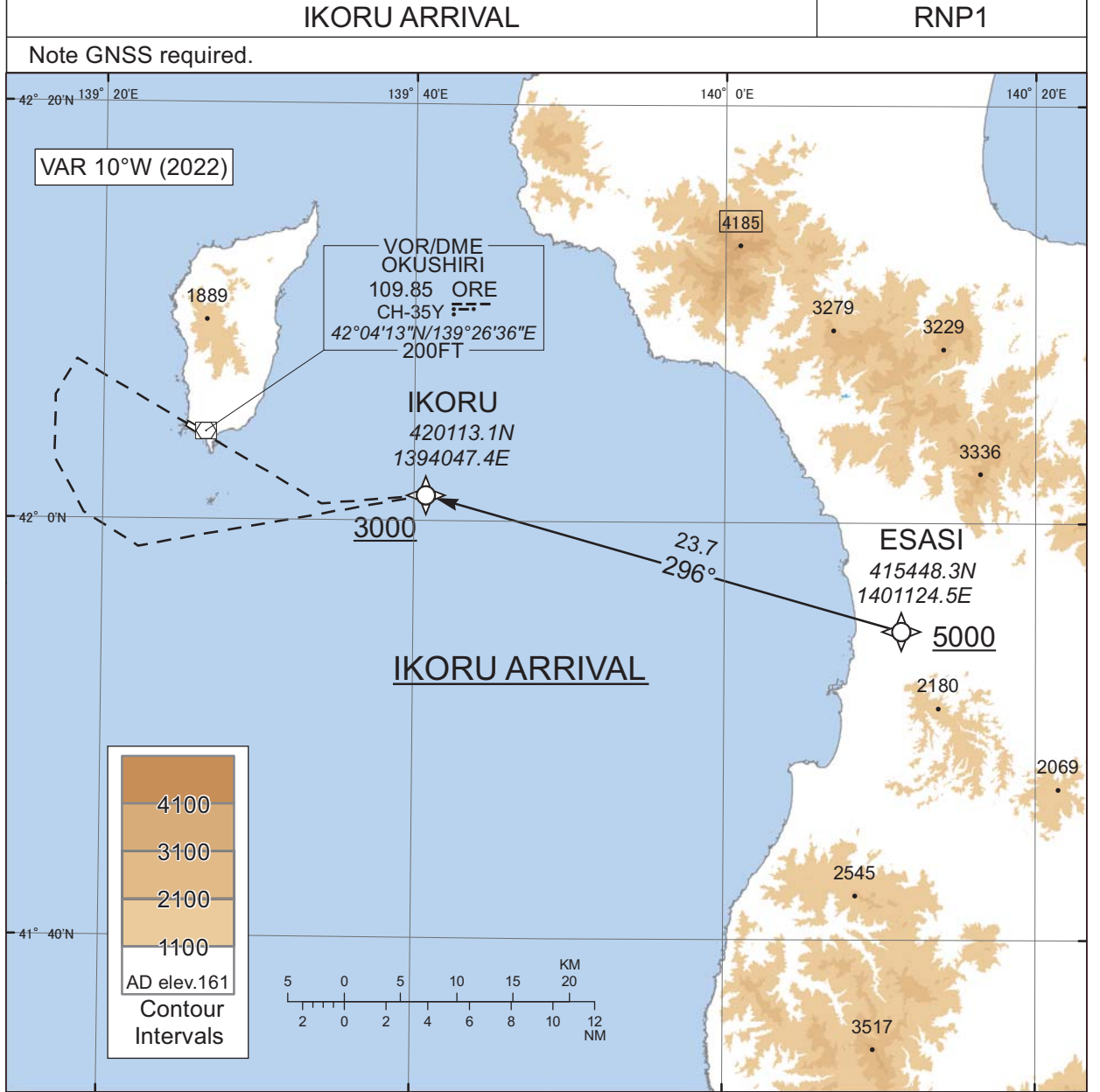
**RWY31**

Serial Number	Path Descriptor	Waypoint Identifier	Fly Over	Course °M(°T)	Magnetic Variation	Distance (NM)	Turn Direction	Altitude (FT)	Speed (KIAS)	Vertical Angle	Navigation Specification
001	VA	-	-	310 (300.3)	-9.8	-	-	+600	-	-	RNP1
002	DF	EO100	-	-	-9.8	-	L	-	-	-	RNP1
003	TF	AONAE	-	095 (084.9)	-9.8	17.1	-	-	-	-	RNP1
004	TF	ESASI	-	115 (105.6)	-9.8	20.6	-	-	-	-	RNP1

CHANGE : Navigation Specification(Basic RNP1 → RNP1).

STANDARD ARRIVAL CHART - INSTRUMENT

RJEO / OKUSHIRI RNAV STAR



CHANGE : Navigation Specification(Basic RNP1 → RNP1).

IKORU ARRIVAL

From ESASI at or above 5000FT, to IKORU at or above 3000FT.

Serial Number	Path Descriptor	Waypoint Identifier	Fly Over	Course °M(°T)	Magnetic Variation	Distance (NM)	Turn Direction	Altitude (FT)	Speed (KIAS)	Vertical Angle	Navigation Specification
001	IF	ESASI	-	-	-9.9	-	-	+5000	-	-	RNP1
002	TF	IKORU	-	296 (285.9)	-9.9	23.7	-	+3000	-	-	RNP1

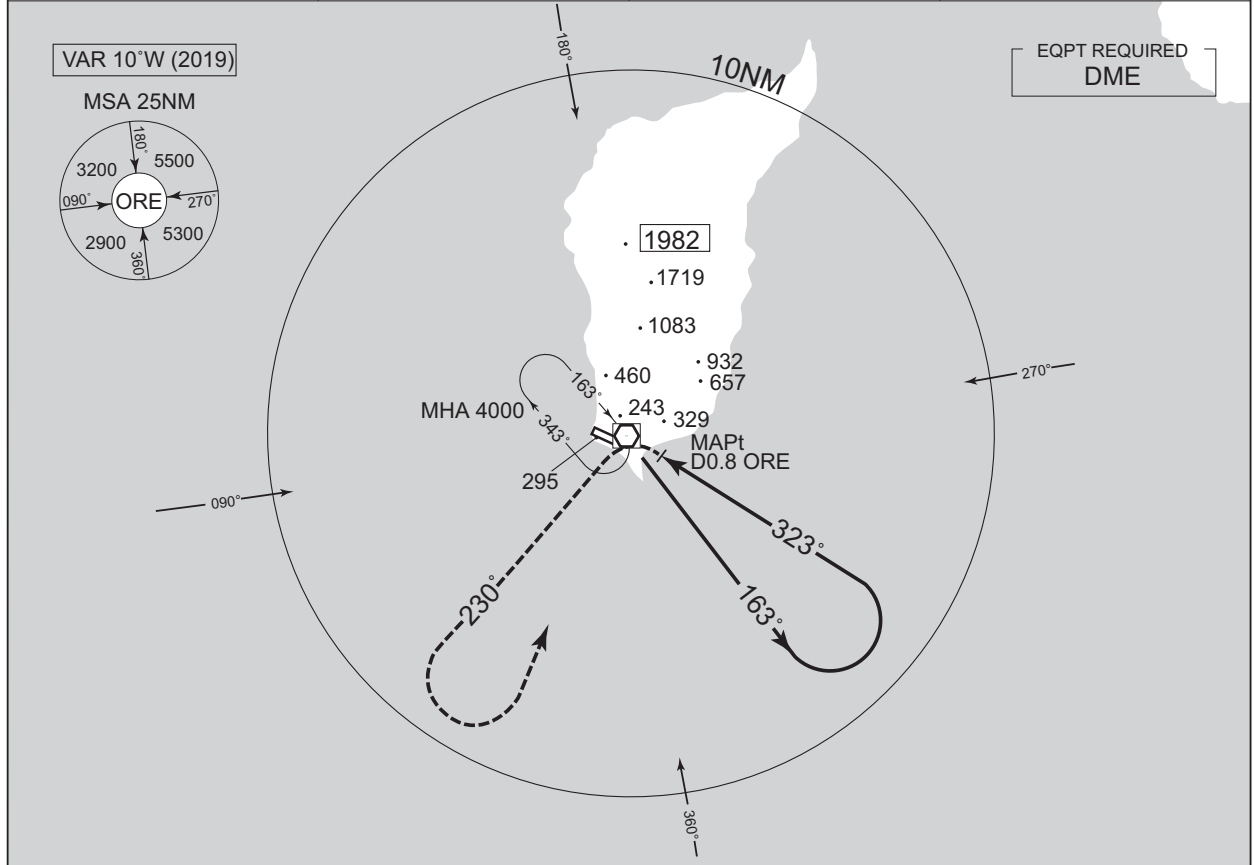
**INTENTIONALLY LEFT BLANK**

INSTRUMENT APPROACH CHART

RJEO / OKUSHIRI

VOR RWY31

<p>SAPPORO CONTROL 119.3 – 276.5 134.25 – 260.4</p>	<p>OKUSHIRI VOR/DME 109.85 ORE CH-35Y 42°04'13"N / 139°26'36"E</p>	<p>OKUSHIRI RADIO 122.7 AFIS provided by New Chitose Airport Office</p>	<p>NO RADAR</p>
---	--	---	-----------------



CHANGE : Call sign(REMOTE→RADIO). AFIS unit added.

**MISSED APPROACH** Remain within ORE 10.0DME

Turn left, climb to 3000FT or above via ORE R230, turn left direct to ORE VOR/DME within ORE 10.0DME and hold at 4000FT.  
Contact OKUSHIRI RADIO.

DME to ORE      0.8    1.4

MINIMA		THR elev. 141	AD elev. 161	
CAT			CIRCLING	
	MDA(H)	CMV	MDA(H)	VIS
A	600 (459)	1500	600 (439)	1600
B			620 (459)	
C			2000	2400
D	-	-	-	-

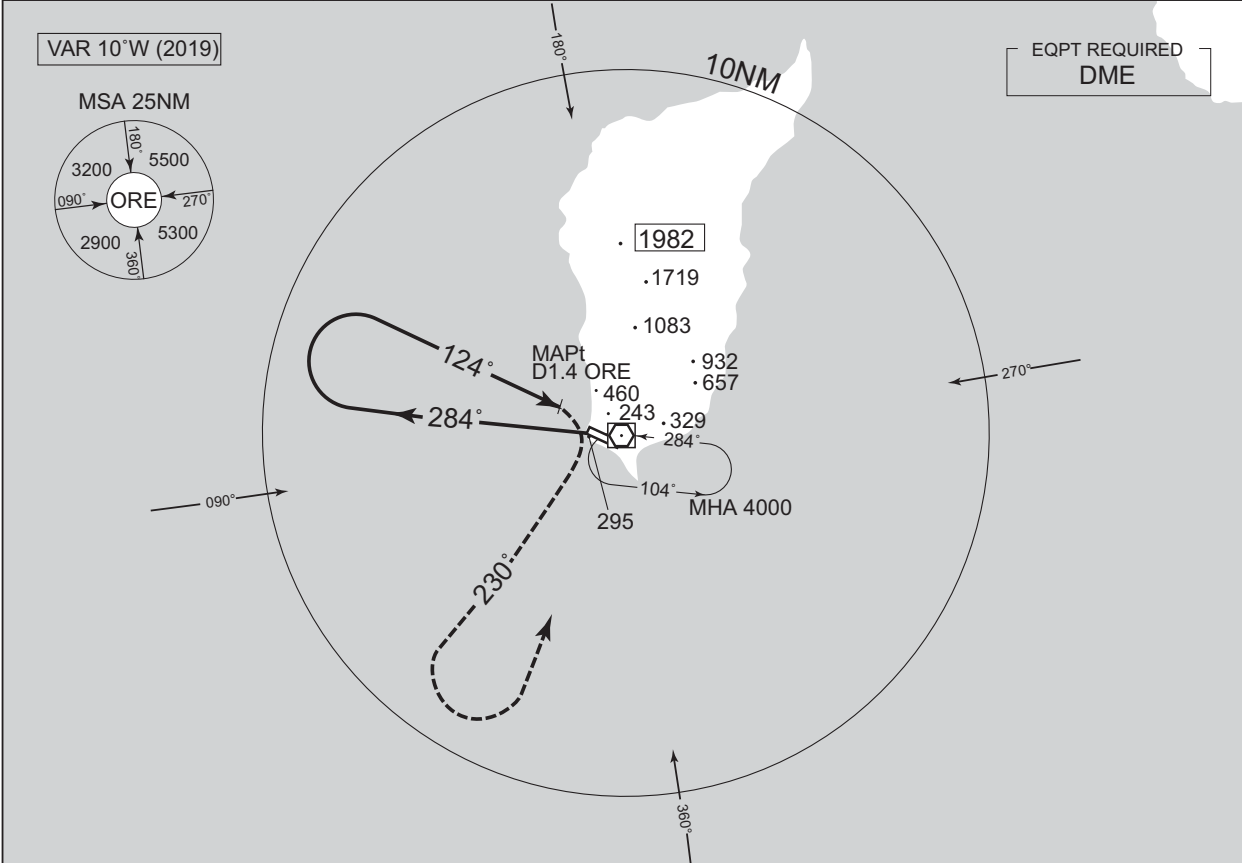
Circling to SOUTH side of RWY only.

INSTRUMENT APPROACH CHART

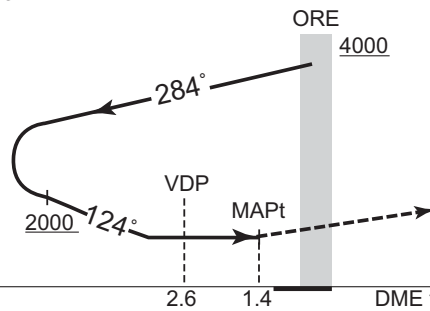
RJEO / OKUSHIRI

VOR RWY13

SAPPORO CONTROL 119.3 – 276.5 134.25 – 260.4	OKUSHIRI VOR/DME 109.85 ORE CH-35Y 42°04'13"N / 139°26'36"E	OKUSHIRI RADIO 122.7 AFIS provided by New Chitose Airport Office	NO RADAR
--	--	---	----------



Remain within ORE 10.0DME



**MISSED APPROACH**  
Turn right, climb to 3000FT or above via ORE R230, turn left direct to ORE VOR/DME within ORE 10.0DME and hold at 4000FT. Contact OKUSHIRI RADIO.

MINIMA		THR elev. 180	AD elev. 161	
CAT			CIRCLING	
	MDA(H)	CMV	MDA(H)	VIS
A	760 (599)	1500	760 (599)	1600
B		2000		2400
C	-	-	-	-
D	-	-	-	-

Circling to SOUTH side of RWY only.

CHANGE : Call sign(REMOTE→RADIO). AFIS unit added.

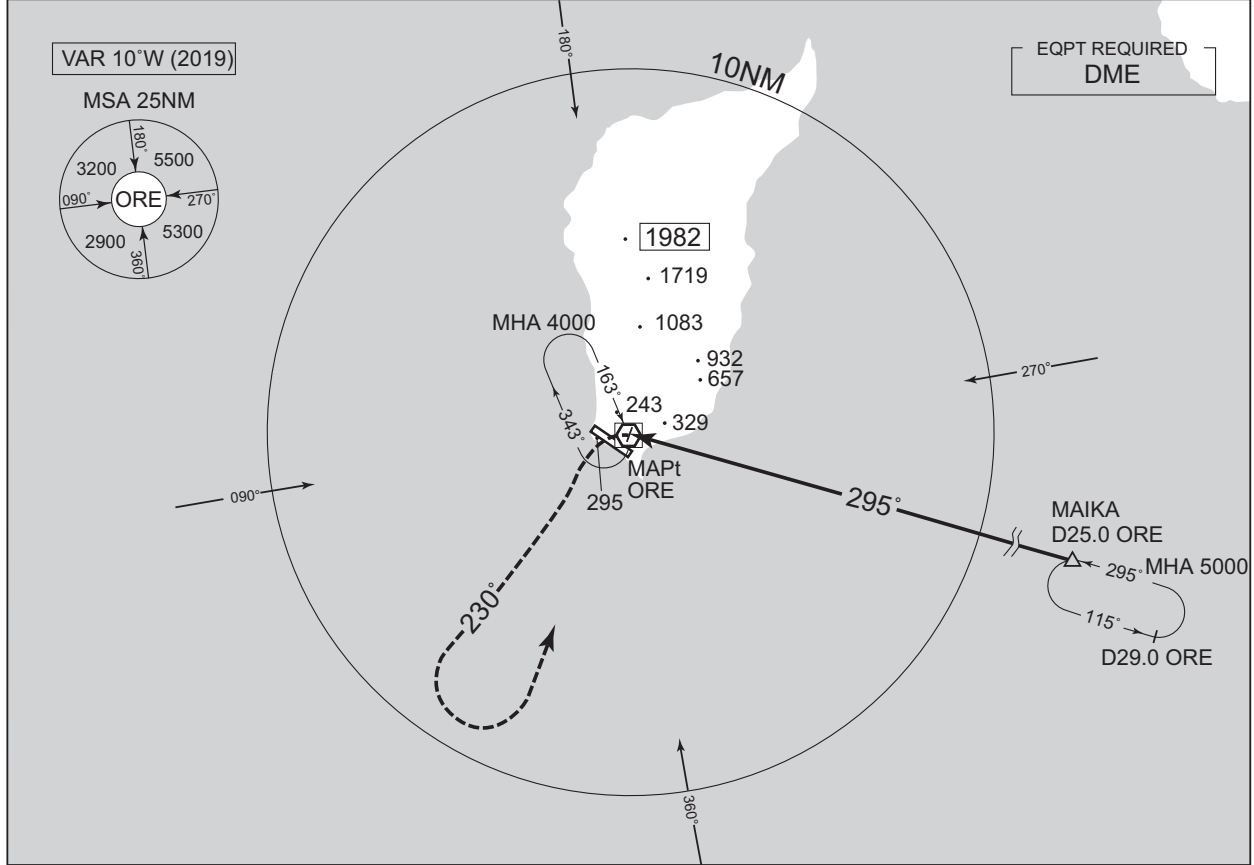


INSTRUMENT APPROACH CHART

RJEO / OKUSHIRI

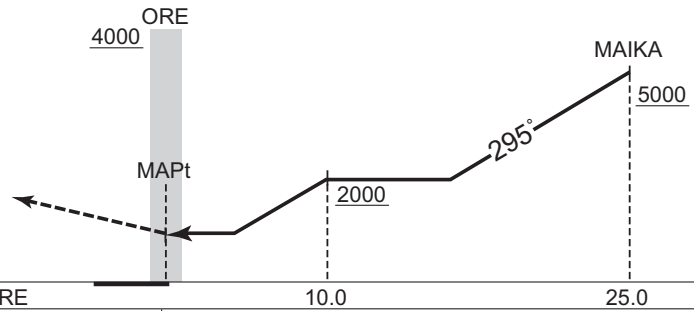
VOR A

<p>SAPPORO CONTROL 119.3 – 276.5 134.25 – 260.4</p>	<p>OKUSHIRI VOR/DME 109.85 ORE CH-35Y <math>\overline{---}</math> 42°04'13"N / 139°26'36"E</p>	<p>OKUSHIRI RADIO 122.7 AFIS provided by New Chitose Airport Office</p>	<p>NO RADAR</p>
---	--	---	-----------------



MISSED APPROACH

Turn left, climb to 3000FT or above via ORE R230, turn left direct to ORE VOR/DME within ORE 10.0DME and hold at 4000FT. Contact OKUSHIRI RADIO.



CHANGE : Call sign(REMOTE→RADIO). AFIS unit added.

MINIMA		AD elev. 161
CAT	CIRCLING	
	MDA(H)	VIS
A	960 (799)	1600
B		2400
C	-	-
D		-

Circling to SOUTH side of RWY only.

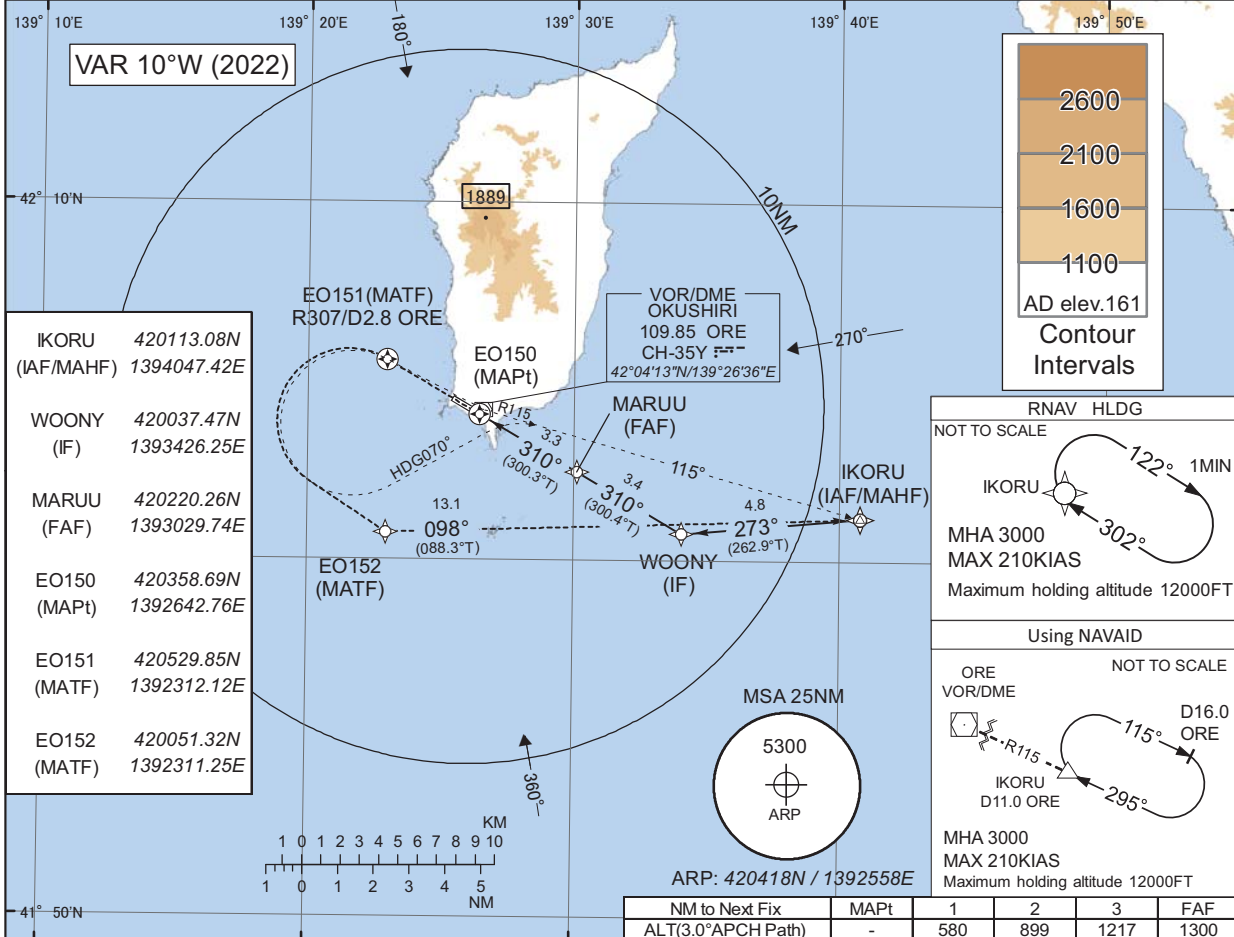
INSTRUMENT APPROACH CHART

RJEO / OKUSHIRI

RNP RWY31

SAPPORO CONTROL 119.3 - 276.5 134.25 - 260.4	RNP APCH MSAS CH 62166 M31A	OKUSHIRI RADIO 122.7 AFIS provided by New Chitose Airport Office	NO RADAR
--	-----------------------------------	---	----------

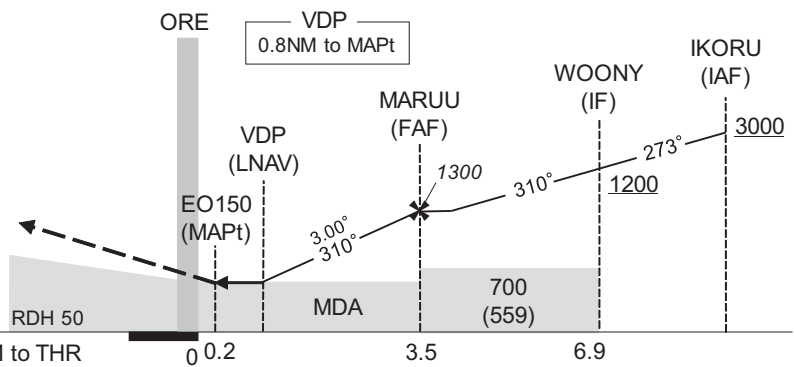
Baro-VNAV not authorized below -15°C



MISSED APPROACH

Direct to EO151, turn left direct to EO152, to IKORU and hold at 3000FT. Contact OKUSHIRI RADIO.

(For using VOR/DME)  
Climb via ORE R307 to ORE 2.8DME, turn left HDG070° to intercept and proceed via ORE R115 to IKORU and hold at 3000FT. Contact OKUSHIRI RADIO.



CAT	LPV		LNAV/VNAV		LNAV		CIRCLING	
	DA(H)	CMV	DA(H)	CMV	MDA(H)	CMV	MDA(H)	VIS
A	428(287)	1500	490(349)	1500	490(349)	1500	600(439)	1600
B	438(297)						620(459)	
C	447(306)	1800	-	1800	-	1800	-	2400
D	-	-	-	-	-	-	-	-

Circling to SOUTH side of RWY only.

CHANGE : PROC renamed. Requirement for RNP.

INSTRUMENT APPROACH CHART

RJEO / OKUSHIRI

RNP RWY31

**FAS DATA BLOCK**

Operation type	0	LTP/FTP ellipsoidal height	+00760
SBAS service provider identifier	2	FPAP Latitude	420433.0405N
Airport identifier	RJEO	FPAP Longitude	1392523.3970E
Runway	31	Threshold Crossing Height	00015.0
Approach performance designator	0	TCH units selector	1
Route indicator		Glide path angle	03.00
Reference path data selector	0	Course width at threshold	105.00
Reference path ID	M31A	∠ length offset	0192
LTP/FTP latitude	420405.4465N	HAL	40.0
LTP/FTP longitude	1392627.1545E	VAL	50.0
CRC remainder	D0B5F768		

**Required additional data**

LTP/FTP orthometric height	42.8
----------------------------	------

CHANGE : Description of FAS DATA BLOCK ITEM(CRC remainder).

INSTRUMENT APPROACH CHART

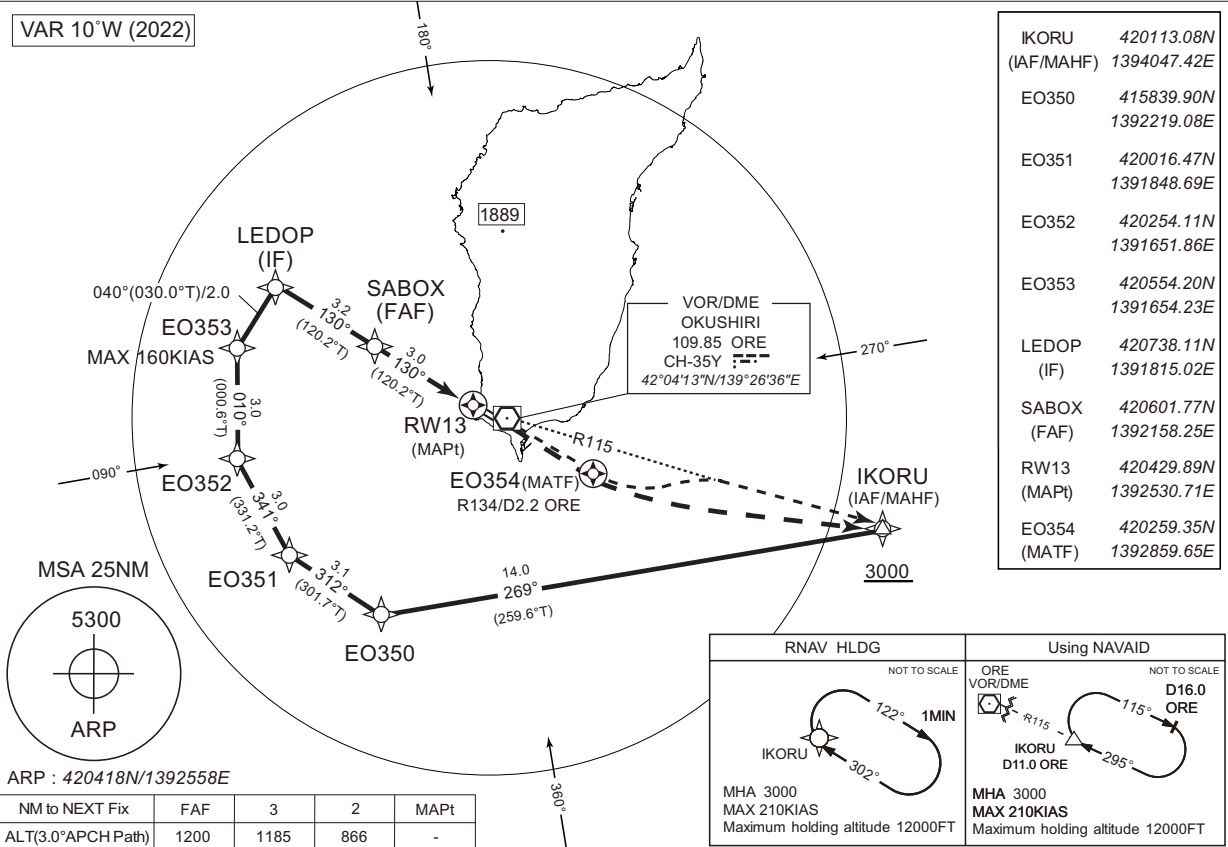
RJEO / OKUSHIRI

RNP RWY13

SAPPORO CONTROL 119.3 – 276.5 134.25 – 260.4	RNP APCH MSAS CH 81047 M13A	OKUSHIRI RADIO 122.7 AFIS provided by New Chitose Airport Office	NO RADAR
--	-----------------------------------	---	----------

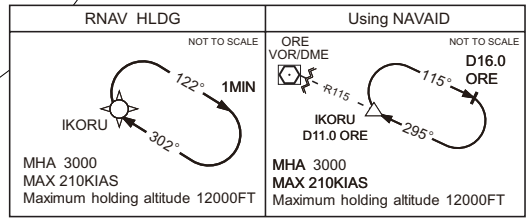
Baro-VNAV not authorized below -15°C

VAR 10°W (2022)

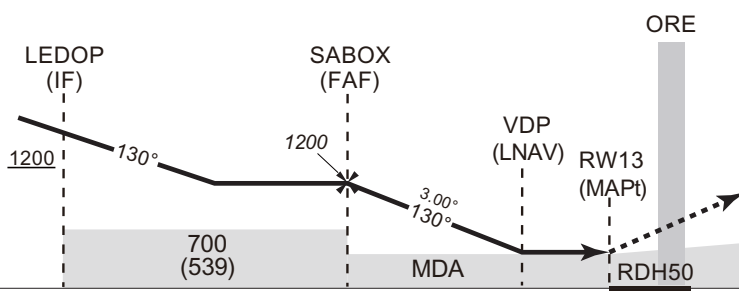


ARP : 420418N/1392558E

NM to NEXT Fix	FAF	3	2	MAPt
ALT(3.0°APCH Path)	1200	1185	866	-



CHANGE: PROC renamed. Requirement for RNP.



MISSED APPROACH

Direct to EO354, turn left direct to IKORU and hold at 3000FT. Contact OKUSHIRI RADIO.

(for using VOR/DME)  
Climb via ORE R134 to 2.2DME, turn left to intercept and proceed via ORE R115 to IKORU and hold at 3000FT. Contact OKUSHIRI RADIO.

MINIMA		THR elev. 180				AD elev. 161			
CAT	LPV		LNAV/VNAV		LNAV		CIRCLING		VIS
	DA(H)	CMV	DA(H)	CMV	MDA(H)	CMV	MDA(H)		
A	430(250)	1500	560(380)	1500	560(399)	1500	600(439)	1600	
B	437(257)						620(459)		
C	447(267)	1600		1800		1800	2400		
D	—	—	—	—	—	—	—	—	

Circling to SOUTH side of RWY only.

INSTRUMENT APPROACH CHART

RJEO / OKUSHIRI

RNP RWY13

FAS DATA BLOCK

Operation type	0	LTP/FTP ellipsoidal height	+00878
SBAS service provider identifier	2	FPAP Latitude	420402.2720N
Airport identifier	RJEO	FPAP Longitude	1392634.4865E
Runway	13	Threshold Crossing Height	00015.0
Approach performance designator	0	TCH units selector	1
Route indicator		Glide path angle	03.00
Reference path data selector	0	Course width at threshold	105.00
Reference path ID	M13A	∠ length offset	0192
LTP/FTP latitude	420429.8670N	HAL	40.0
LTP/FTP longitude	1392530.7315E	VAL	50.0
CRC remainder	D63254BC		

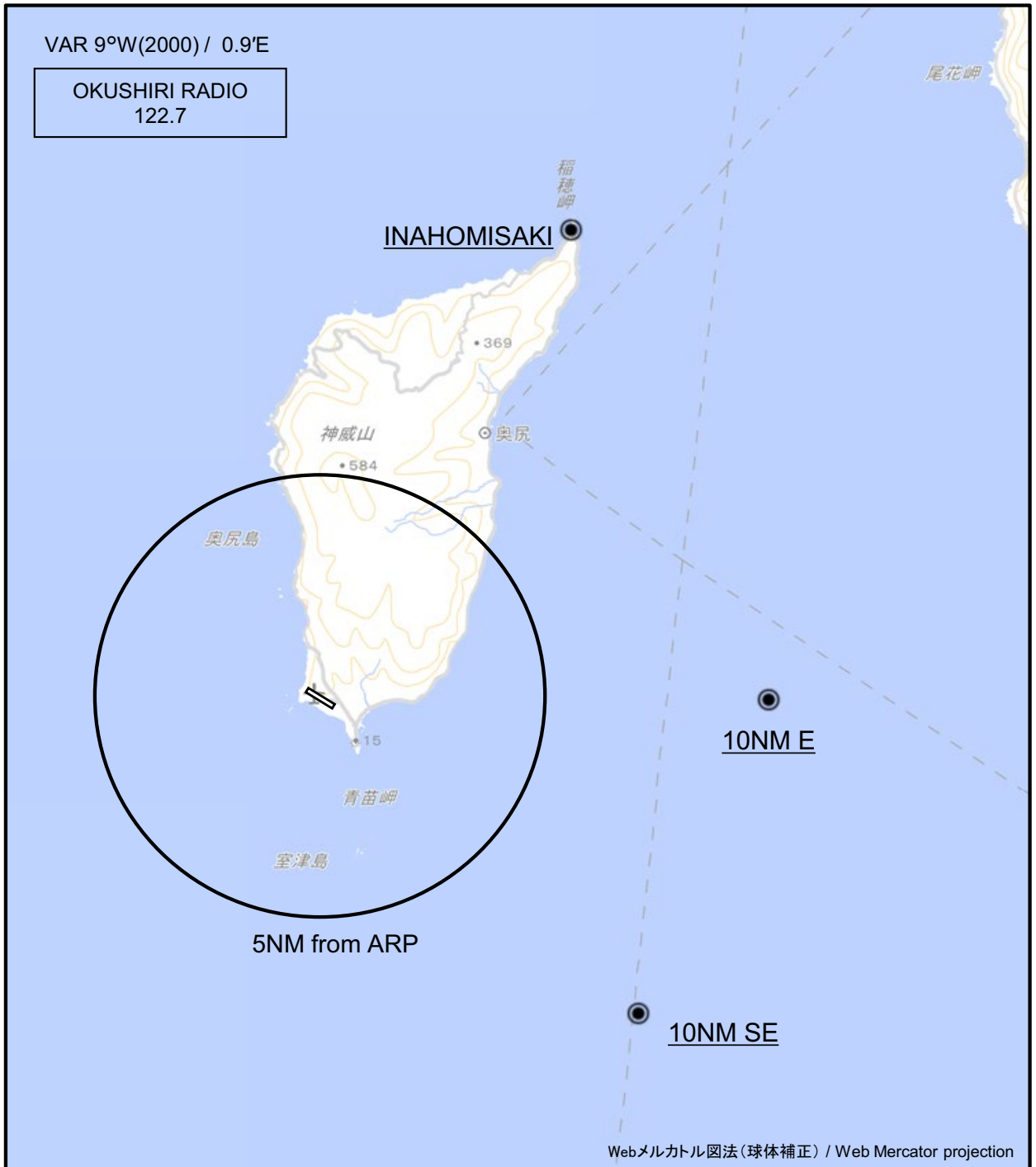
Required additional data

LTP/FTP orthometric height	54.8
----------------------------	------

CHANGE : Description of FAS DATA BLOCK ITEM(CRC remainder).

RJEO / OKUSHIRI

Visual REP



※図中に標高を示す数字がある場合、単位はメートル(m)である。The unit of measurement used to express elevation is meter(m).

CHANGE : Call sign(REMOTE→RADIO).

Call sign	BRG / DIST from ARP	Remarks
稲穂岬 Inahomisaki	028°T / 12.0NM	灯台 Lighthouse
10NM E	090°T / 10.0NM	海上 Over the sea
10NM SE	135°T / 10.0NM	海上 Over the sea

**INTENTIONALLY LEFT BLANK**