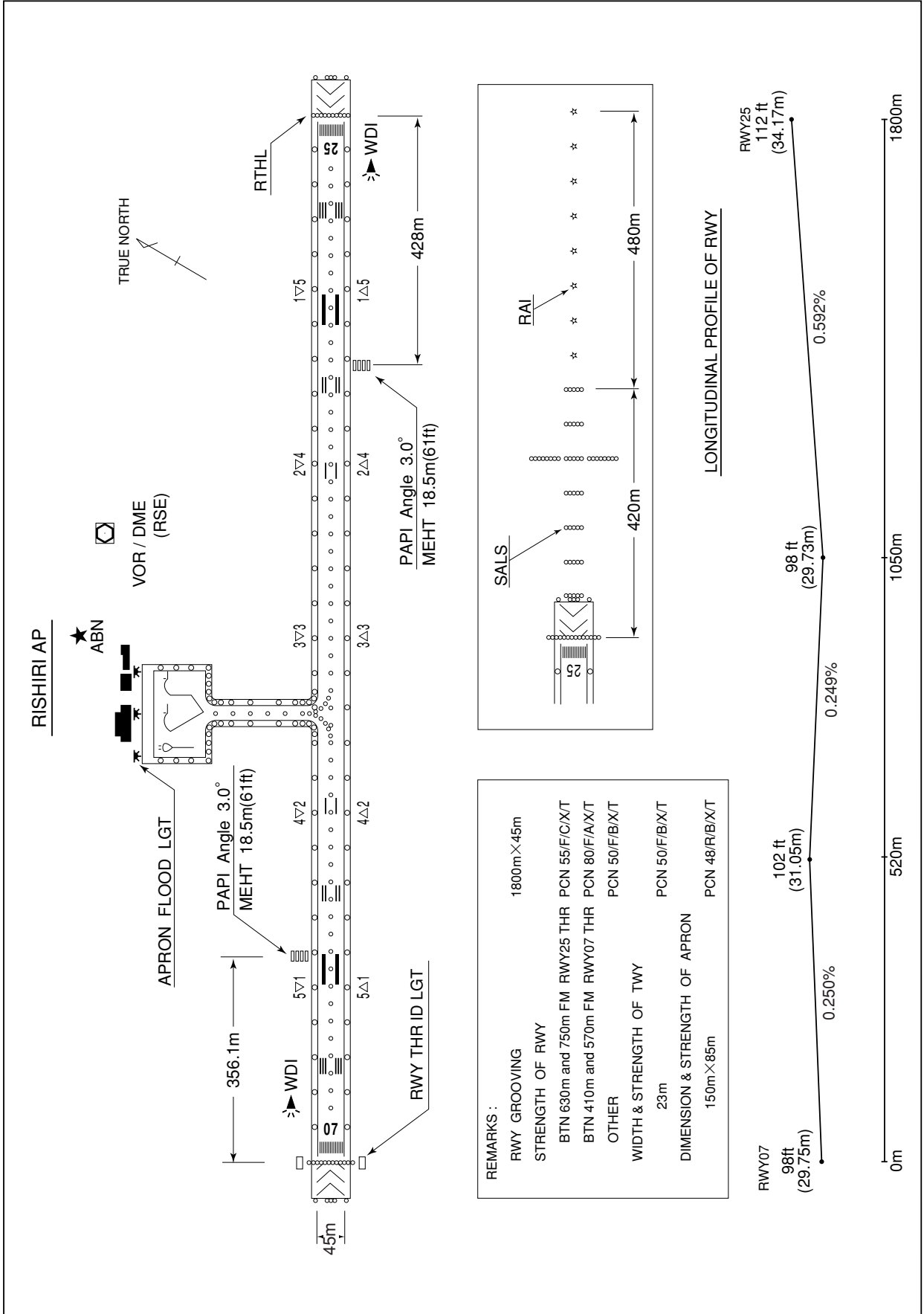


RJER / RISHIRI

AD CHART



**INTENTIONALLY LEFT BLANK**

STANDARD DEPARTURE CHART-INSTRUMENT

RJER / RISHIRI

SID

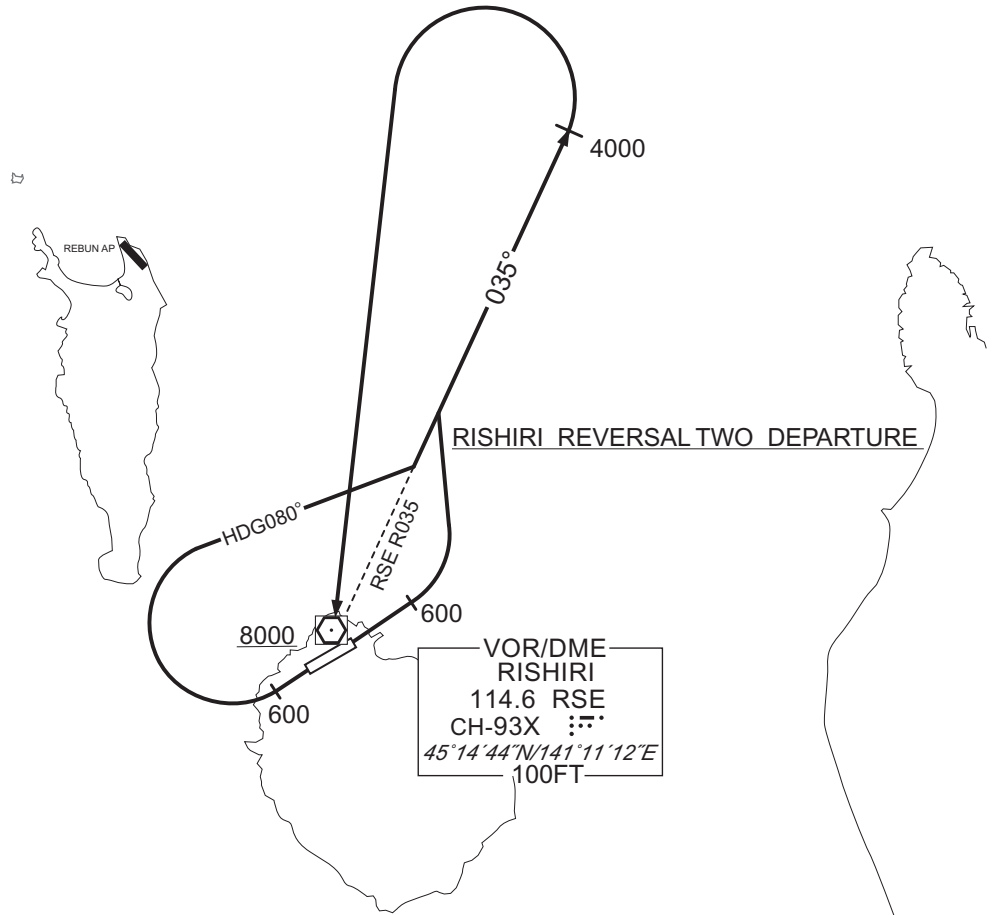
RISHIRI REVERSAL TWO DEPARTURE

RWY07 : Climb RWY HDG to 600FT, turn left...

RWY25 : Climb RWY HDG to 600FT, turn right HDG 080° ...  
... to intercept and proceed via RSE R035 to 4000FT,  
turn left, direct to RSE VOR/DME.  
Cross RSE VOR/DME at or above 8000FT.

Note RWY25 : 5.2% climb gradient required up to 1000FT.  
OBST ALT 262FT located at 0.6NM 225° FM end of RWY25.  
OBST ALT 722FT located at 1.3NM 157° FM end of RWY25.

CHANGE : PROC renamed. Turning altitude designated. HDG to intercept RSE R035. Turning altitude to RSE. Note added.



STANDARD DEPARTURE CHART-INSTRUMENT

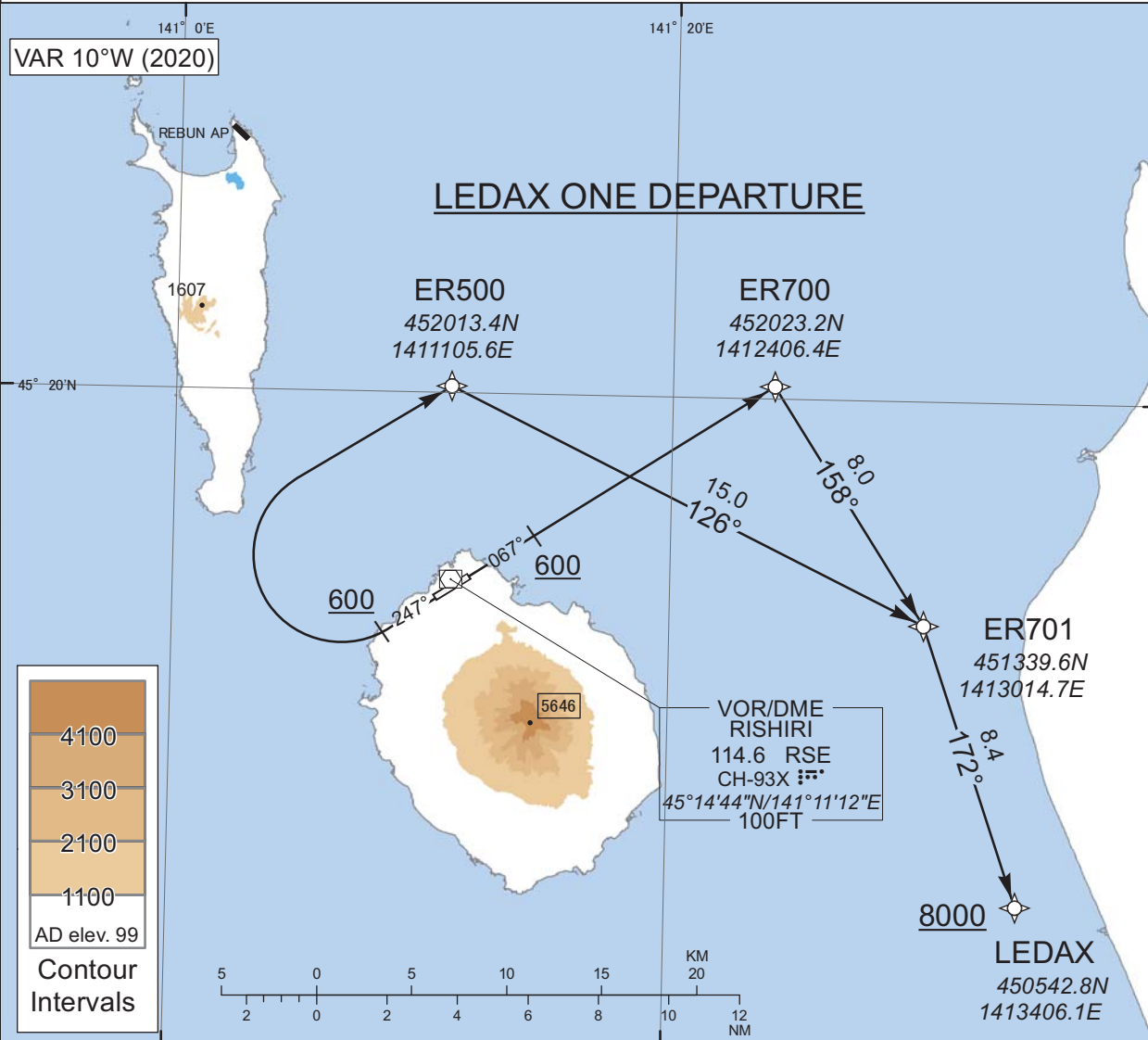
RJER / RISHIRI

RNAV SID

LEDAX ONE DEPARTURE

RNP1

Note GNSS required.



CHANGE : Navigation Specification(Basic RNP1 → RNP1).

**LEDAX ONE DEPARTURE**

RWY07 : Climb on HDG067° at or above 600FT, direct to ER700, to ER701, to LEDAX at or above 8000FT.

RWY25 : Climb on HDG247° at or above 600FT, turn right direct to ER500, to ER701, to LEDAX at or above 8000FT.

Note RWY25 : 5.2% climb gradient required up to 600FT.

OBST ALT 262FT located at 0.6NM 225°FM end of RWY25.

STANDARD DEPARTURE CHART-INSTRUMENT

RJER / RISHIRI

RNAV SID

LEDAX ONE DEPARTURE

RWY07

Serial Number	Path Descriptor	Waypoint Identifier	Fly Over	Course °M(°T)	Magnetic Variation	Distance (NM)	Turn Direction	Altitude (FT)	Speed (KIAS)	Vertical Angle	Navigation Specification
001	VA	-	-	067 (056.9)	-10.4	-	-	+600	-	-	RNP1
002	DF	ER700	-	-	-10.4	-	-	-	-	-	RNP1
003	TF	ER701	-	158 (147.3)	-10.4	8.0	-	-	-	-	RNP1
004	TF	LEDAX	-	172 (161.1)	-10.4	8.4	-	+8000	-	-	RNP1

RWY25

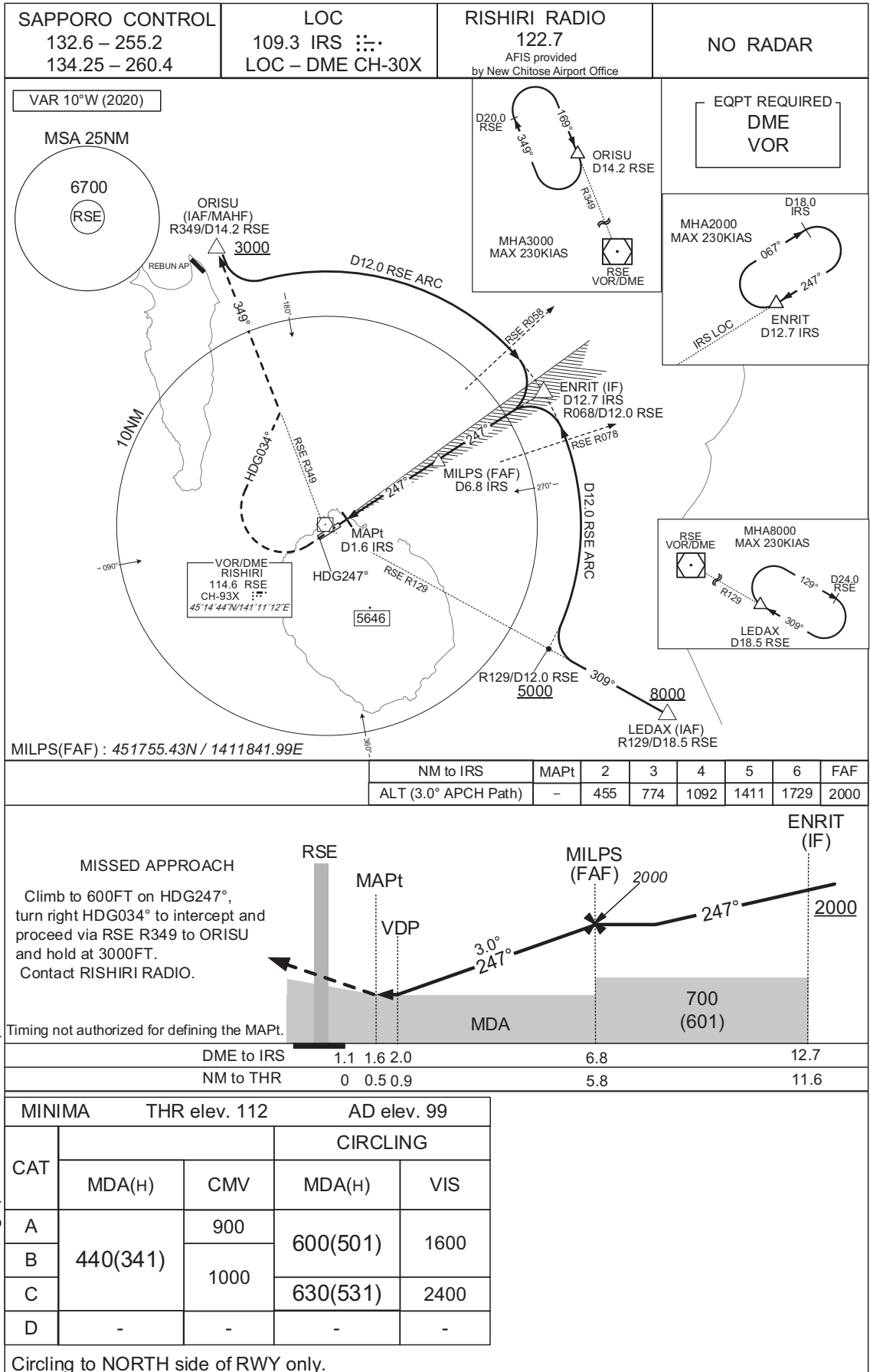
Serial Number	Path Descriptor	Waypoint Identifier	Fly Over	Course °M(°T)	Magnetic Variation	Distance (NM)	Turn Direction	Altitude (FT)	Speed (KIAS)	Vertical Angle	Navigation Specification
001	VA	-	-	247 (236.9)	-10.4	-	-	+600	-	-	RNP1
002	DF	ER500	-	-	-10.4	-	R	-	-	-	RNP1
003	TF	ER701	-	126 (115.9)	-10.4	15.0	-	-	-	-	RNP1
004	TF	LEDAX	-	172 (161.1)	-10.4	8.4	-	+8000	-	-	RNP1

CHANGE : Navigation Specification(Basic RNP1 → RNP1).

INSTRUMENT APPROACH CHART

RJER / RISHIRI

LOC RWY25

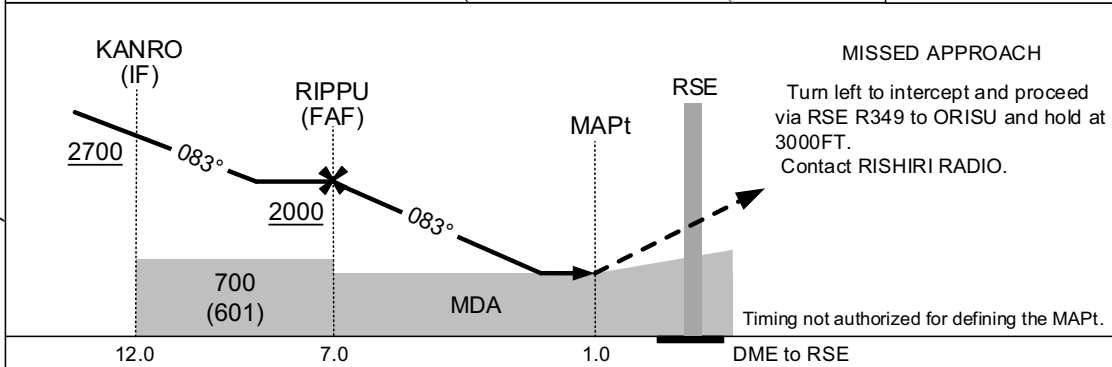
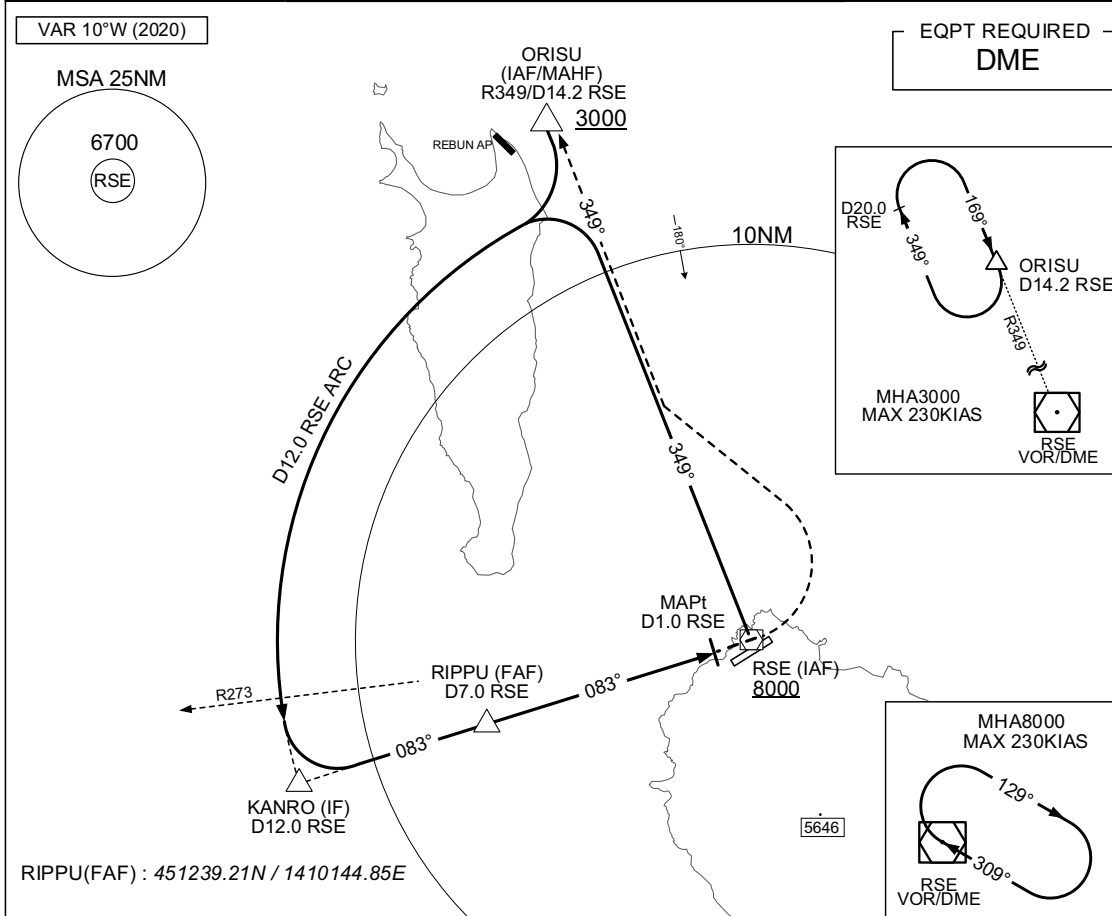


INSTRUMENT APPROACH CHART

RJER / RISHIRI

VOR A

SAPPORO CONTROL 132.6 – 255.2 134.25 – 260.4	RISHIRI VOR/DME 114.6 RSE CH-93X 45°14'44"N/141°11'12"E	RISHIRI RADIO 122.7 AFIS provided by New Chitose Airport Office	NO RADAR
--	--	--	----------



MINIMA		AD elev. 99	
CAT	CIRCLING		
	MDA(H)	VIS	
A	610(511)	1600	
B	630(531)	2400	
C	-	-	
D	-	-	

Circling to NORTH side of RWY only.

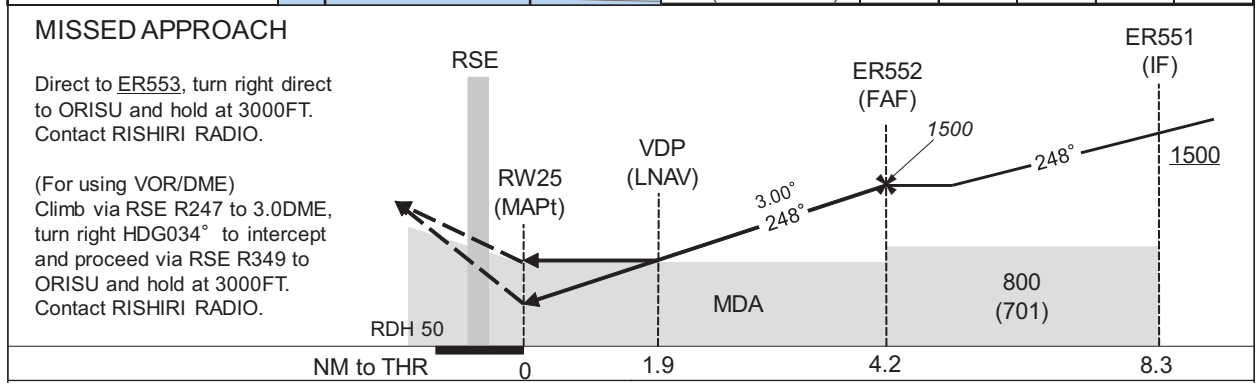
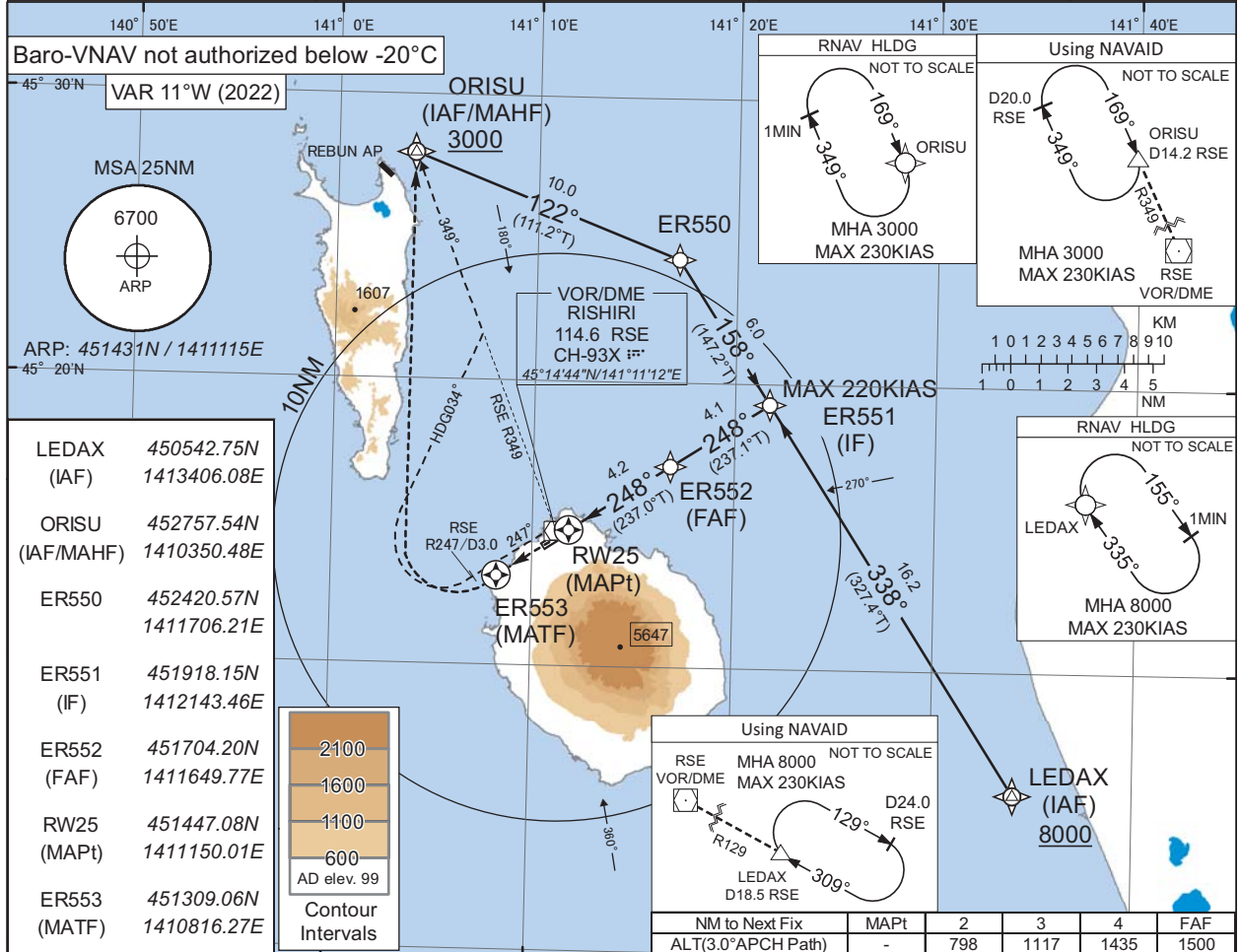
CHANGE : Call sign(REMOTE→RADIO). AFIS unit added.

INSTRUMENT APPROACH CHART

RJER / RISHIRI

RNP RWY25

SAPPORO CONTROL 132.6 - 255.2 134.25 - 260.4	RNP APCH MSAS CH 45317 M25A	RISHIRI RADIO 122.7 AFIS provided by New Chitose Airport Office	NO RADAR
--	-----------------------------------	--	----------



MINIMA		THR elev. 112				AD elev. 99			
CAT	LPV		LNAV/VNAV		LNAV		CIRCLING		VIS
	DA(H)	CMV	DA(H)	CMV	MDA(H)	CMV	MDA(H)		
A	397(285)	800	730(618)	1000	730(631)	1000	730(631)	1600	
B	407(295)			1200		1200			
C	417(305)	1000	-	-	-	-	-	2400	
D	-	-	-	-	-	-	-	-	

Circling to NORTH side of RWY only.

CHANGE : PROC renamed. Requirement for RNP.



INSTRUMENT APPROACH CHART

RJER / RISHIRI

RNP RWY25

**FAS DATA BLOCK**

Operation type	0	LTP/FTP ellipsoidal height	+00632
SBAS service provider identifier	2	FPAP latitude	451415.3275N
Airport identifier	RJER	FPAP longitude	1411040.7490E
Runway	25	Threshold crossing height	00015.0
Approach performance designator	0	TCH units selector	1
Route indicator		Glide path angle	03.00
Reference path data selector	0	Course width at threshold	105.00
Reference path ID	M25A	∠ length offset	0000
LTP/FTP latitude	451447.0530N	HAL	40.0
LTP/FTP longitude	1411149.9960E	VAL	50.0
CRC remainder	9A7FDBC0		

**Required additional data**

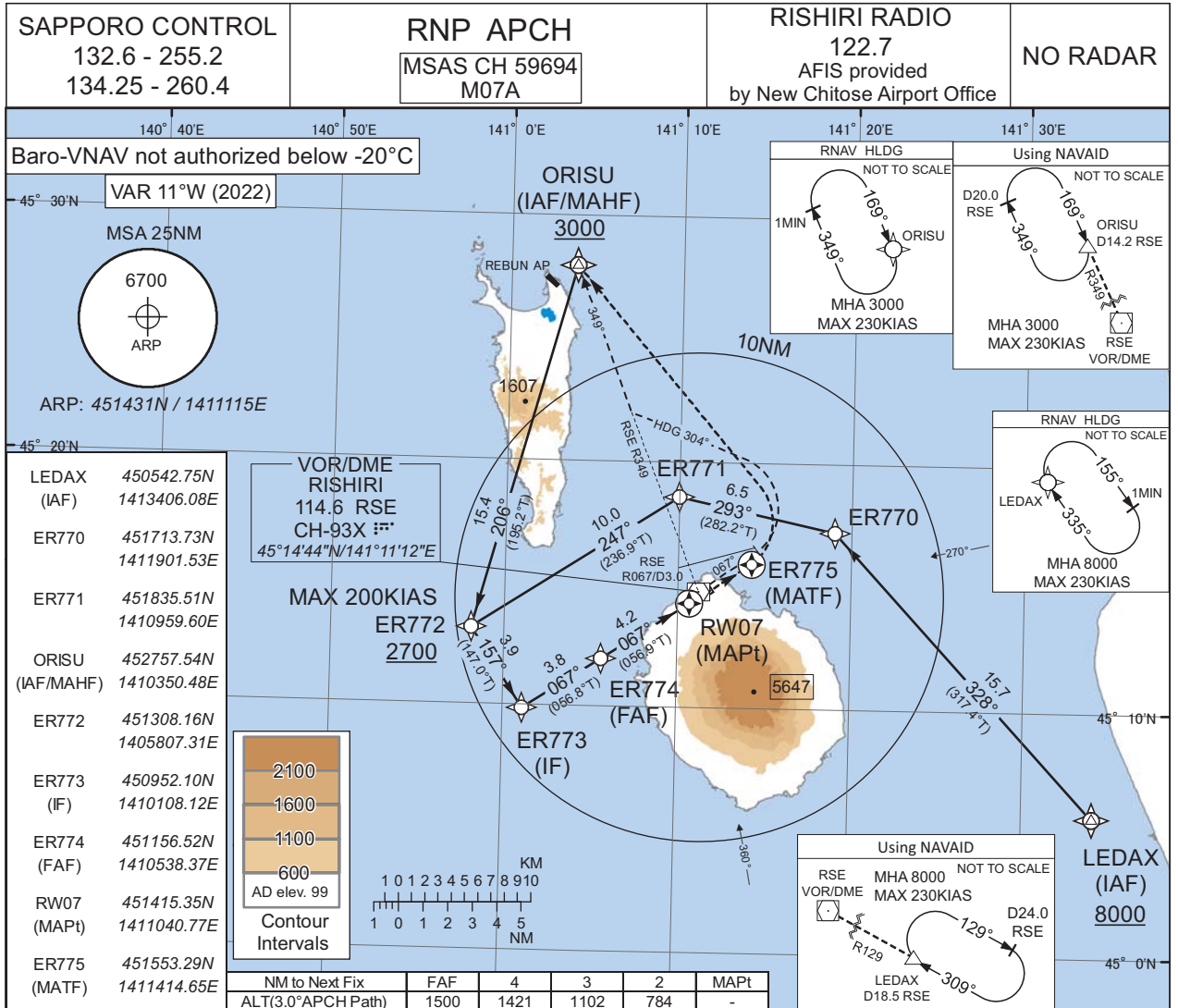
LTP/FTP orthometric height	34.5
----------------------------	------

CHANGE : Description of FAS DATA BLOCK ITEM(CRC remainder).

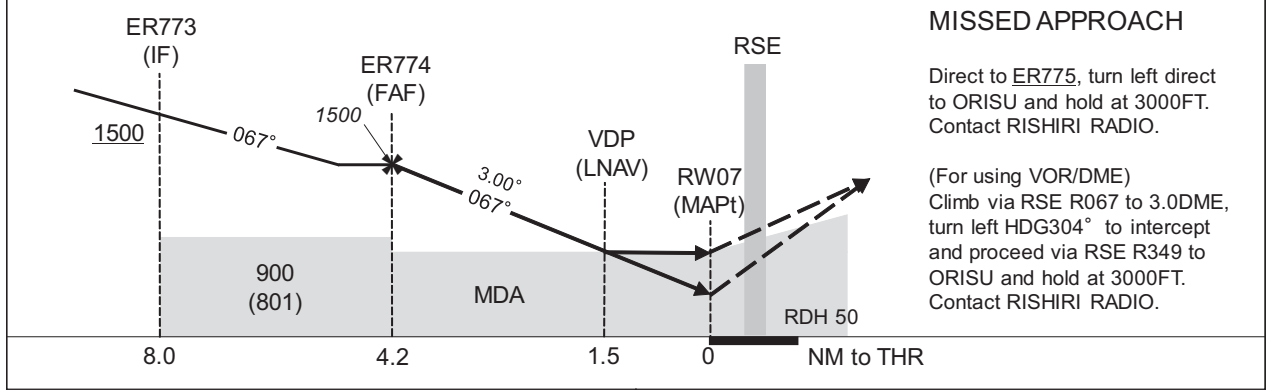
INSTRUMENT APPROACH CHART

RJER / RISHIRI

RNP RWY07



CHANGE : PROC renamed. Requirement for RNP.



MINIMA	THR elev. 98				AD elev. 99			
	LPV		LNAV/VNAV		LNAV		CIRCLING	
CAT	DA(H)	CMV	DA(H)	CMV	MDA(H)	CMV	MDA(H)	VIS
A	427(329)	1500	610(512)	1500	610(511)	1500	610(511)	1600
B	437(339)							
C	447(349)	1800	-	2000	-	2000	630(531)	2400
D	-	-	-	-	-	-	-	-

Circling to NORTH side of RWY only.

## INSTRUMENT APPROACH CHART

RJR / RISHIRI

RNP RWY07

**FAS DATA BLOCK**

Operation type	0	LTP/FTP ellipsoidal height	+00590
SBAS service provider identifier	2	FPAP latitude	451447.0530N
Airport identifier	RJER	FPAP longitude	1411149.9960E
Runway	07	Threshold crossing height	00015.0
Approach performance designator	0	TCH units selector	1
Route indicator		Glide path angle	03.00
Reference path data selector	0	Course width at threshold	105.00
Reference path ID	M07A	∠ length offset	0000
LTP/FTP latitude	451415.3275N	HAL	40.0
LTP/FTP longitude	1411040.7490E	VAL	50.0
CRC remainder	138B8808		

**Required additional data**

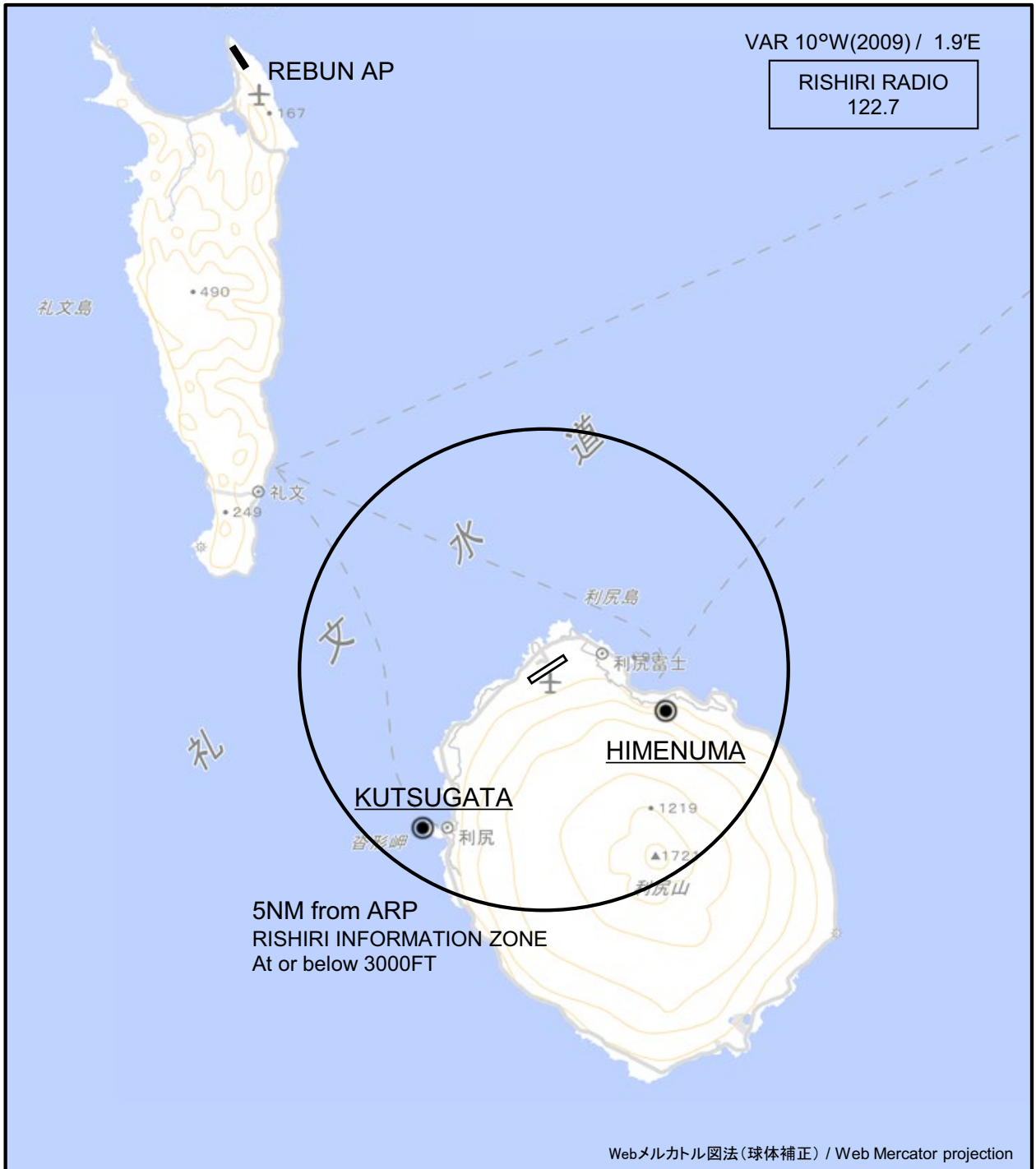
LTP/FTP orthometric height	30.2
----------------------------	------

CHANGE : Description of FAS DATA BLOCK ITEM(CRC remainder).

INSTRUMENT APPROACH CHART

RJER / RISHIRI

Visual REP



CHANGE : Call sign(REMOTE→RADIO).

※図中に標高を示す数字がある場合、単位はメートル(m)である。The unit of measurement used to express elevation is meter(m).

Call sign	BRG / DIST from ARP	Remarks
姫沼 Himenuma	110°T / 2.7NM	姫沼 Pond
沓形 Kutsugata	217°T / 4.2NM	沓形岬 Cape

Note : In the SE through SW of the airport, A/G COM from Rishiri Radio is blinded by Mt. Rishiri(1,721m/5,646ft).

RJER / RISHIRI

Minimum Vectoring Altitude CHART

