

AD 2 AERODROMES

RJER AD 2.1 AERODROME LOCATION INDICATOR AND NAME

RJER - RISHIRI

RJER AD 2.2 AERODROME GEOGRAPHICAL AND ADMINISTRATIVE DATA

1	ARP coordinates and site at AD	451431N/1411115E 057° / 900m from RWY07 THR
2	Direction and distance from (city)	23nm 242° QTE from Wakkanai city
3	Elevation/ Reference temperature	99FT / 23°C(2004-2008)
4	Geoid undulation at AD ELEV PSN	94FT
5	MAG VAR/ Annual change	10°W(2009) / 1.9°E
6	AD Administration, address, telephone, telefax, telex, AFS, e- mail and/or Web-site addresses	Hokkaido, Public AP Airport administration branch 1143 Oshidomari-aza-hondomari, Rishirifuji-cho, Rishiri-gun, Hokkaido TEL:0163-82-1269 FAX:0163-82-1414
7	Types of traffic permitted(IFR/ VFR)	IFR/VFR
8	Remarks	Nil

RJER AD 2.3 OPERATIONAL HOURS

1	AD Administration	2330 - 0800 [2330 24th MAR - 0800 30th OCT] 0000 - 0800 [0000 31st OCT - 0800 24th MAR]
2	Customs and immigration	On request Customs: 0162-33-1075 Immigration: 0162-23-3269
3	Health and sanitation	Quarantine(human): On request(0162-23-4403) Quarantine(animal, plant): Nil
4	AIS Briefing Office	Nil
5	ATS Reporting Office(ARO)	Nil
6	MET Briefing Office	H24 (NEW CHITOSE)
7	ATS	2330 - 0800 [2330 24th MAR - 0800 30th OCT] 0000 - 0800 [0000 31st OCT - 0800 24th MAR] Remarks:AFIS provided by New Chitose Airport Office.
8	Fuelling	Nil
9	Handling	2330 - 0800 [2330 24th MAR - 0800 30th OCT] 0000 - 0800 [0000 31st OCT - 0800 24th MAR]
10	Security	2330 - 0800 [2330 24th MAR - 0800 30th OCT] 0000 - 0800 [0000 31st OCT - 0800 24th MAR]
11	De-icing	Nil
12	Remarks	Nil

RJER AD 2.4 HANDLING SERVICES AND FACILITIES

1	Cargo-handling facilities	Nil
2	Fuel/ oil types	Nil
3	Fuelling facilities/ capacity	Nil
4	De-icing facilities	Nil
5	Hangar space for visiting aircraft	Nil
6	Repair facilities for visiting aircraft	Nil
7	Remarks	Nil

RJER AD 2.5 PASSENGER FACILITIES

1	Hotels	Nil
2	Restaurants	At Airport
3	Transportation	Buses, Taxis and Rental Car
4	Medical facilities	Nil
5	Bank and Post Office	Nil
6	Tourist Office	Nil
7	Remarks	Nil

RJER AD 2.6 RESCUE AND FIRE FIGHTING SERVICES

1	AD category for fire fighting	CAT 7
2	Rescue equipment	Emergency medical equipments conveyance truck x 1, Chemical fire fighting truck x 2
3	Capability for removal of disabled aircraft	Nil
4	Remarks	Nil

RJER AD 2.7 SEASONAL AVAILABILITY-CLEARING

1	Types of clearing equipment	Truck for snow clearance x 5 , Rotary x 4 , Snow clearance dozer x 3 , Snow sweeper x 3 , Snow melting agent spray truck x 1
2	Clearance priorities	1:RWY , 2:TWY , 3:Apron
3	Remarks	Nil

RJER AD 2.8 APRONS, TAXIWAYS AND CHECK LOCATIONS DATA

1	Apron surface and strength	Strength:Cement-Concrete , PCN 48/R/B/X/T
2	Taxiway width, surface and strength	Width:23m, Strength:Asphalt-Concrete, PCN 50/F/B/X/T
3	ACL and elevation	Not AVBL
4	VOR checkpoints	Not AVBL
5	INS checkpoints	Spot NR 1: 451437.61N/1411105.43E 2: 451436.57N/1411103.17E 3: 451435.84N/1411101.03E
6	Remarks	Nil

RJER AD 2.9 SURFACE MOVEMENT GUIDANCE AND CONTROL SYSTEM AND MARKINGS

1	Use of aircraft stand ID signs, TWY guide lines and Visual docking/ parking guidance system of aircraft stands	Nil
2	RWY and TWY markings and LGT	RWY: RWY07/25 (Marking): RWY designation, RWY CL, RWY THR, Aiming point, TDZ, RWY side stripes (LGT): RCLL, REDL, RTHL, RENL, RWY DIST marker LGT TWY: (Marking): TWY CL, TWY side stripe (LGT): TWY edge LGT, TWY CL LGT
3	Stop bars	Nil
4	Remarks	(Marking):Overrun area (LGT): Apron flood LGT

RJER AD 2.10 AERODROME OBSTACLES

In approach/TKOF areas

RWY/Area affected	Obstacle type	Coordinates	Elevation	Markings/ LGT	Remarks
Nil					

In circling area and at AD

Obstacle type	Coordinates	Elevation	Markings/ LGT	Remarks
Mountain	451312N/1411010E	301FT	- / LIM(Red)	
Mountain	451356N/1411048E	208FT	- / LIM(Red)	
Mountain	451425N/1411206E	207FT	- / LIM(Red)	
Mountain	451417N/1411323E	371FT	- / LIM(Red)	

RJER AD 2.11 METEOROLOGICAL INFORMATION PROVIDED

1	Associated MET Office	NEW CHITOSE
2	Hours of service MET Office outside hours	H24 (NEW CHITOSE)
3	Office responsible for TAF preparation Periods of validity	Nil
4	Trend forecast Interval of issuance	Nil
5	Briefing/ consultation provided	Briefing is available upon inquiry at NEW CHITOSE
6	Flight documentation Language(s) used	C En
7	Charts and other information available for briefing or consultation	S ₆ , U ₈₅ , U ₇ , U ₅ , U ₃ , U ₂₅ , U ₂ /T _r , P _S , P ₅ , P ₃ , P ₂₅ , P _{SWE} , P _{SWF} , P _{SWG} , P _{SWI} , P _{SWM} , P _{SW} (domestic), E, C, W _E , W _F , W _G , W _I , W, N
8	Supplementary equipment available for providing information	Nil
9	ATS units provided with information	RADIO
10	Additional information (limitation of service, etc.)	Nil

RJER AD 2.12 RUNWAY PHYSICAL CHARACTERISTICS

Designations RWY NR	TRUE BRG	Dimensions of RWY(M)	Strength(PCN) and Surface of RWY	THR coordinates THR geoid undulation	THR elevation and highest elevation of TDZ of precision APP RWY
1	2	3	4	5	6
07	57.04°	1800x45	PCN 50/F/B/X/T (1)PCN 55/F/C/X/T (2)PCN 80/F/A/X/T	451415.35N 1411040.77E 94.2FT	THR ELEV : 98FT
25	237.04°	1800x45	Asphalt-Concrete	451447.08N 1411150.01E 93.9FT	THR ELEV : 112FT
Slope of RWY		Strip Dimensions (M)	RESA(Overrun) Dimensions(M)		Remarks
	7	10	11		14
SEE AD2.24 AD CHART		1920x150 1920x150	40x150 190x150	RWY grooving 1800m x 45m (1)BTN 630m and 750m FM RWY25 THR (2)BTN 410m and 570m FM RWY07 THR	

RJER AD 2.13 DECLARED DISTANCES

RWY Designator	TORA (m)	TODA (m)	ASDA (m)	LDA (m)	Remarks
1	2	3	4	5	6
07	1800	1800	1800	1800	Nil
25	1800	1800	1800	1800	Nil

RJER AD 2.14 APPROACH AND RUNWAY LIGHTING

RWY Designator	APCH LGT type LEN INTST	RTHL Color WBAR	PAPI (VASIS) Angle DIST FM THR MEHT	RTZL LEN	RCLL LEN Spacing Color INTST	REDL LEN Spacing Color INTST	RENL Color WBAR	STWL LEN Color
1	2	3	4	5	6	7	8	9
07	Nil	Green	PAPI 3.0°/LEFT 356.1m 61FT	Nil	1,800m 30m Coded color (White/Red) LIH	1,800m 60m Coded color (White/Yellow) LIH	Red	Nil(*2)
25	SALS (*1) 420m LIH	Green	PAPI 3.0°/LEFT 428.0m 61FT	Nil	1,800m 30m Coded color (White/Red) LIH	1,800m 60m Coded color (White/Yellow) LIH	Red	Nil(*2)
Remarks								
10								
SALS with RAI(LEN:480m)(*1) Overrun area edge LGT(LEN:60m Color:Red)(*2) RWY THR ID LGT FOR RWY07 THR(Color:White)								

RJER AD 2.15 OTHER LIGHTING, SECONDARY POWER SUPPLY

1	ABN/IBN location, characteristics and hours of operation	ABN: 451443N/1411104E, ALTN FLG White/Green EV4.3sec, HO
2	LDI location and LGT Anemometer location and LGT	LDI:Nil Anemometer: RWY07:300m from RWY07 THR, LGTD RWY25:308m from RWY25 THR, LGTD
3	TWY edge and centerline lighting	TWY edge and center line lights installed, see AD 2.9
4	Secondary power supply/ switch-over time	Within 15 sec:ALL LGT(except for OBST LGT)
5	Remarks	WDI LGT

RJER AD 2.16 HELICOPTER LANDING AREA

Nil

RJER AD 2.17 ATS AIRSPACE

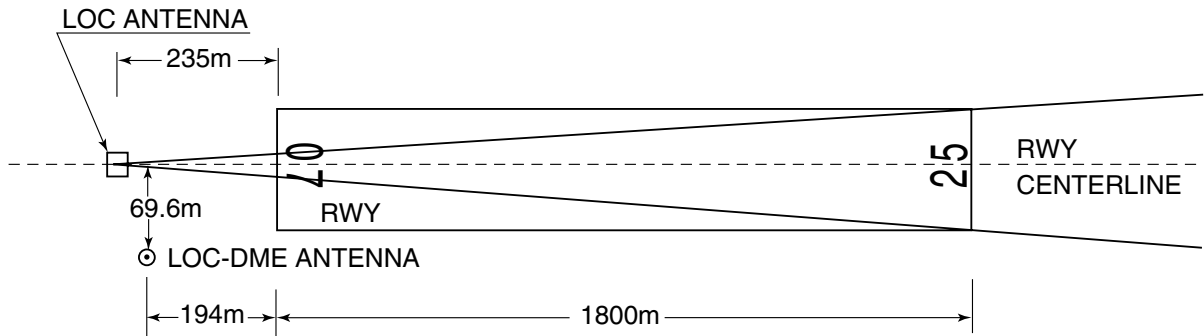
Designation and lateral limits		Vertical limits (ft)	Airspace classification	ATS unit call sign Language	Remarks
1		2	3	4	6
Rishiri Information Zone	Area within a radius of 5nm(9km) of Rishiri ARP	3,000 or below	E	Rishiri Radio En	

RJER AD 2.18 ATS COMMUNICATION FACILITIES

Service designation	Call sign	Frequency	Hours of operation	Remarks
1	2	3	4	5
AFIS	Rishiri Radio	122.7MHz	2330 - 0800 [2330 24th MAR - 0800 30th OCT] 0000 - 0800 [0000 31st OCT - 0800 24th MAR]	Operated by New Chitose Airport Office

RJER AD 2.19 RADIO NAVIGATION AND LANDING AIDS

Type of aid (VOR declination)	ID	Frequency	Hours of operation	Position of transmitting antenna coordinates	Elevation of DME transmitting antenna	Remarks
1	2	3	4	5	6	7
VOR (10°W/2019)	RSE	114.6MHz	H24	451444.38N/ 1411112.36E		Unusable: 130°-140° beyond 35nm BLW 8000ft 140°-200° BLW 8000ft
DME	RSE	1180MHz (CH-93X)	H24	451444.38N/ 1411112.36E	109.6ft	Unusable: 110°-120° beyond 35nm BLW 4000ft 130°-140° beyond 20nm BLW 8000ft 140°-200° BLW 8000ft
LOC 25	IRS	109.3MHz	2330 - 0800 [2330 24th MAR - 0800 30th OCT] 0000 - 0800 [0000 31st OCT - 0800 24th MAR]	451411.20N/ 1411031.69E		LOC:235m(771ft) away FM RWY 07 THR, BRG(MAG)247°.
LOC-DME 25	IRS	991MHz (CH-30X)	2330 - 0800 [2330 24th MAR - 0800 30th OCT] 0000 - 0800 [0000 31st OCT - 0800 24th MAR]	451410.03N/ 1411034.98E	106ft	DME:194m(636ft) away FM RWY 07 THR, 69.6m(228ft) SE of RCL.
MSAS		1575.42MHz	H24			Transmitting antennas are satellite based.



REMARKS : 1. LOC beam BRG(MAG) 247°
2. ELEV of LOC-DME 32.17m(106ft)

RJER AD 2.20 LOCAL TRAFFIC REGULATIONS

1. Airport regulations

Nil

2. Taxiing to and from stands

Nil

3. Parking area for small aircraft(General aviation)

Nil

4. Parking area for helicopters

Nil

5. Apron - taxiing during winter conditions

Nil

6. Taxiing - limitations

Nil

7. School and training flights - technical test flights - use of runways

Nil

8. Helicopter traffic - limitation

Nil

9. Removal of disabled aircraft from runways

Nil

RJER AD 2.21 NOISE ABATEMENT PROCEDURES

Nil

RJER AD 2.22 FLIGHT PROCEDURES

TAKE OFF MINIMA

	RWY	ACFT CAT	REDL & RCLL		REDL or RCLL or RCL Marking		NIL (DAYTIME ONLY)	
			RVR	VIS	RVR	VIS	RVR	VIS
Multi-Engine ACFT with TKOF ALTN AP FILED	07	A,B,C	-	400m	-	400m	-	500m
	25	A,B,C	-	400m	-	400m	-	500m
OTHER	07	A,B,C	AVBL LDG MINIMA					
	25							

RJER AD 2.23 ADDITIONAL INFORMATION

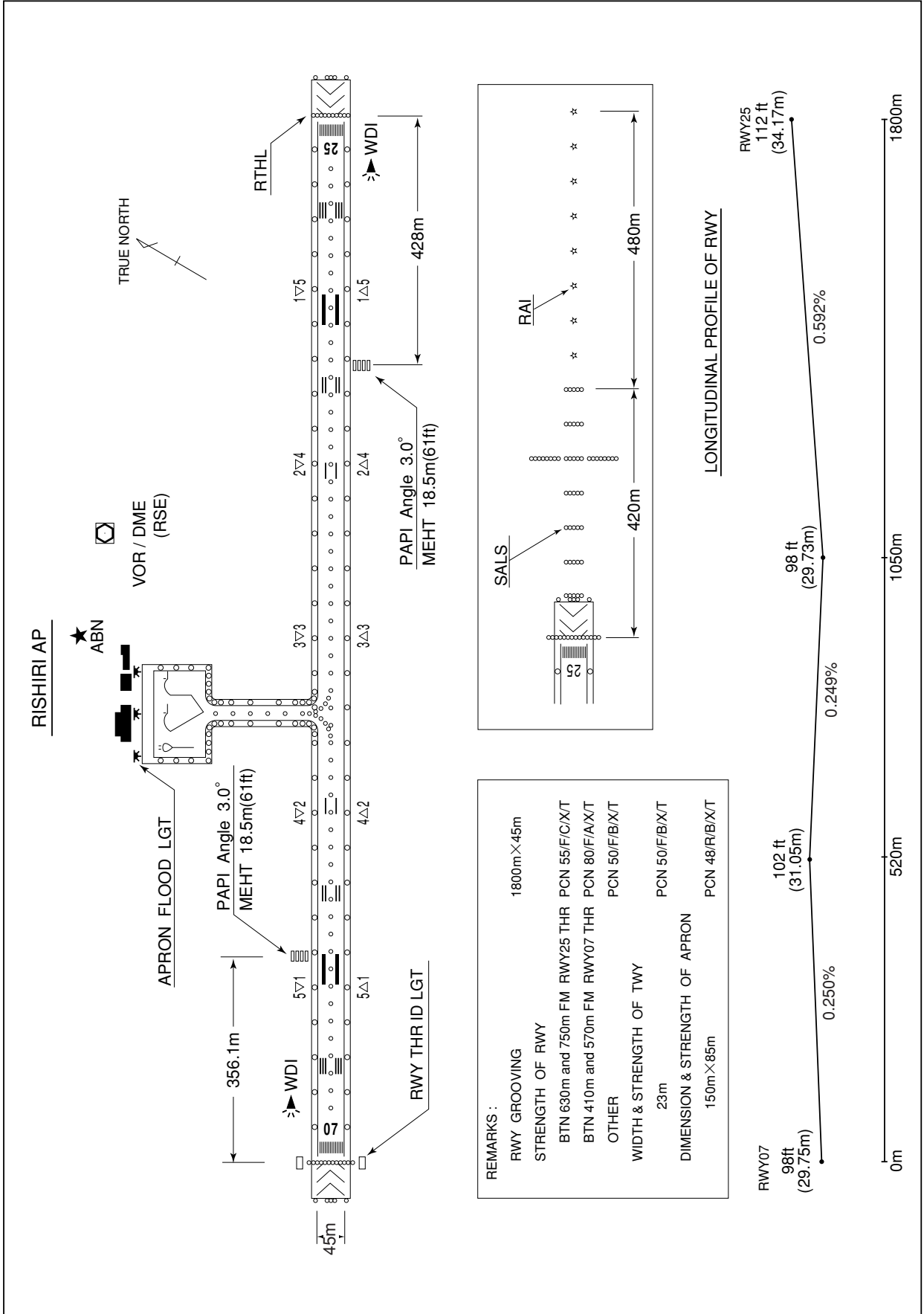
Nil

RJER AD 2.24 CHARTS RELATED TO AN AERODROME

Aerodrome/Heliport Chart
 Standard Departure Chart - Instrument (RISHIRI REVERSAL)
 Standard Departure Chart - Instrument (LEDAX-RNAV)
 Instrument Approach Chart (LOC RWY25)
 Instrument Approach Chart (VOR A)
 Instrument Approach Chart (RNP RWY25)
 Instrument Approach Chart (RNP RWY07)
 Other Chart (Visual REP)
 Other Chart (MVA CHART)

RJER / RISHIRI

AD CHART



INTENTIONALLY LEFT BLANK

STANDARD DEPARTURE CHART-INSTRUMENT

RJER / RISHIRI

SID

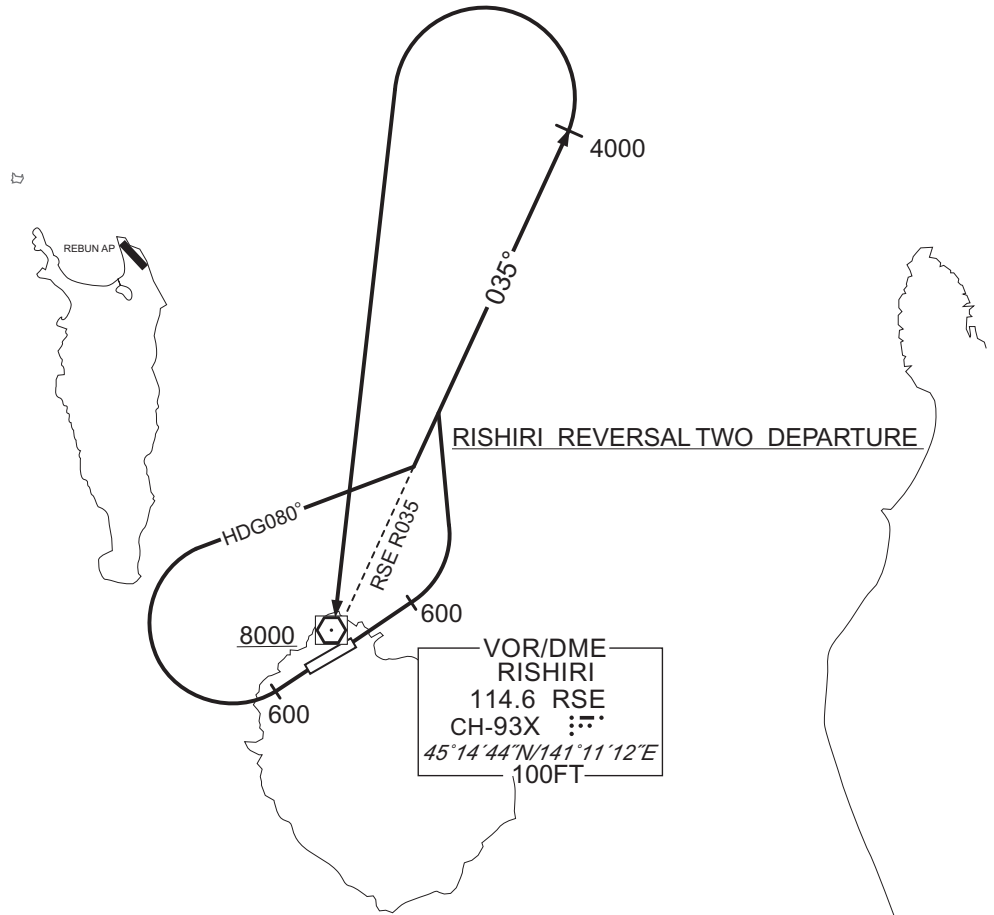
RISHIRI REVERSAL TWO DEPARTURE

RWY07 : Climb RWY HDG to 600FT, turn left...

RWY25 : Climb RWY HDG to 600FT, turn right HDG 080° ...
... to intercept and proceed via RSE R035 to 4000FT,
turn left, direct to RSE VOR/DME.
Cross RSE VOR/DME at or above 8000FT.

Note RWY25 : 5.2% climb gradient required up to 1000FT.
OBST ALT 262FT located at 0.6NM 225° FM end of RWY25.
OBST ALT 722FT located at 1.3NM 157° FM end of RWY25.

CHANGE : PROC renamed. Turning altitude designated. HDG to intercept RSE R035. Turning altitude to RSE. Note added.



STANDARD DEPARTURE CHART-INSTRUMENT

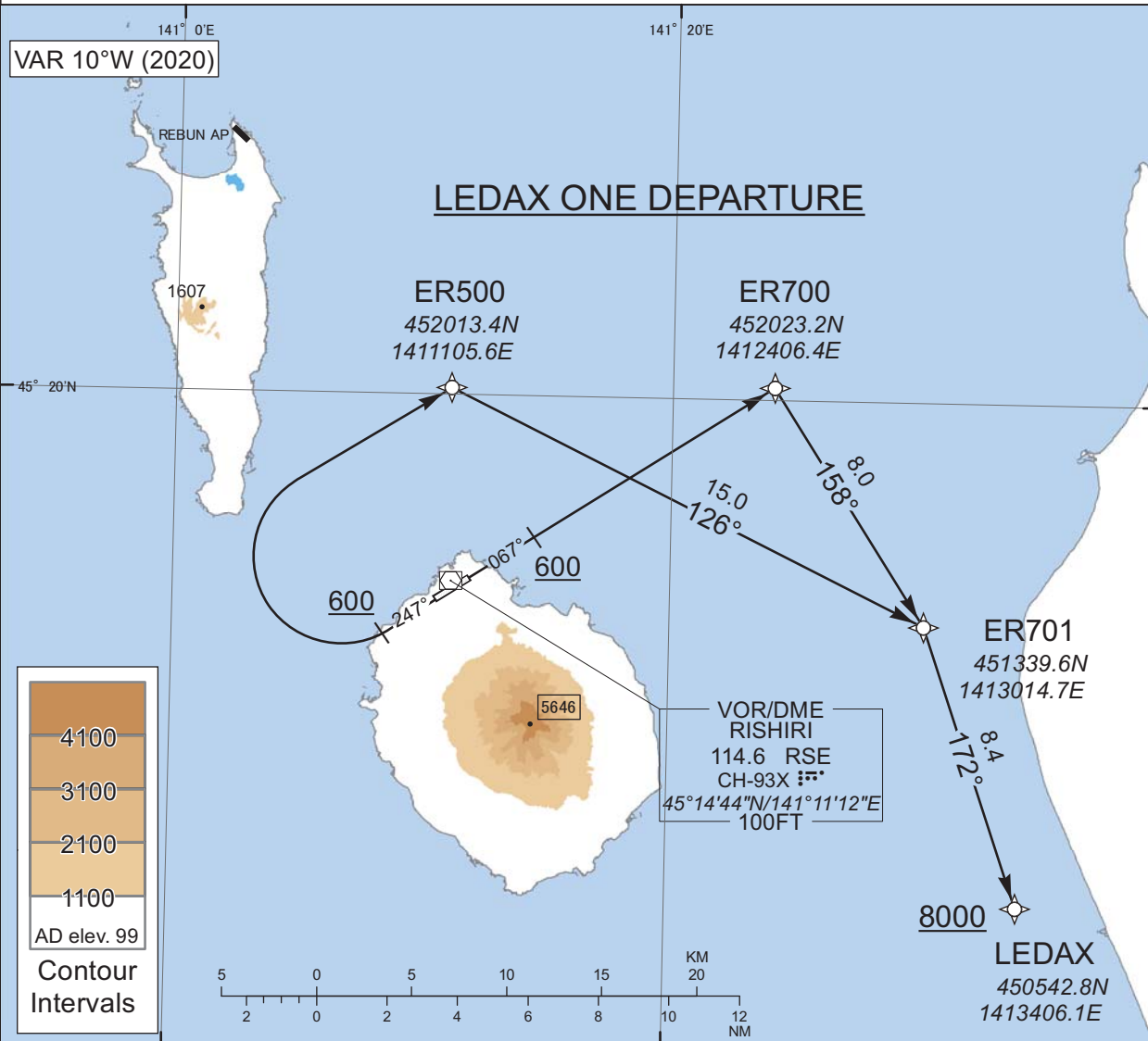
RJER / RISHIRI

RNAV SID

LEDAX ONE DEPARTURE

RNP1

Note GNSS required.



CHANGE : Navigation Specification(Basic RNP1 → RNP1).

LEDAX ONE DEPARTURE

RWY07 : Climb on HDG067° at or above 600FT, direct to ER700, to ER701, to LEDAX at or above 8000FT.

RWY25 : Climb on HDG247° at or above 600FT, turn right direct to ER500, to ER701, to LEDAX at or above 8000FT.

Note RWY25 : 5.2% climb gradient required up to 600FT.

OBST ALT 262FT located at 0.6NM 225°FM end of RWY25.

STANDARD DEPARTURE CHART-INSTRUMENT

RJER / RISHIRI

RNAV SID

LEDAX ONE DEPARTURE

RWY07

Serial Number	Path Descriptor	Waypoint Identifier	Fly Over	Course °M(°T)	Magnetic Variation	Distance (NM)	Turn Direction	Altitude (FT)	Speed (KIAS)	Vertical Angle	Navigation Specification
001	VA	-	-	067 (056.9)	-10.4	-	-	+600	-	-	RNP1
002	DF	ER700	-	-	-10.4	-	-	-	-	-	RNP1
003	TF	ER701	-	158 (147.3)	-10.4	8.0	-	-	-	-	RNP1
004	TF	LEDAX	-	172 (161.1)	-10.4	8.4	-	+8000	-	-	RNP1

RWY25

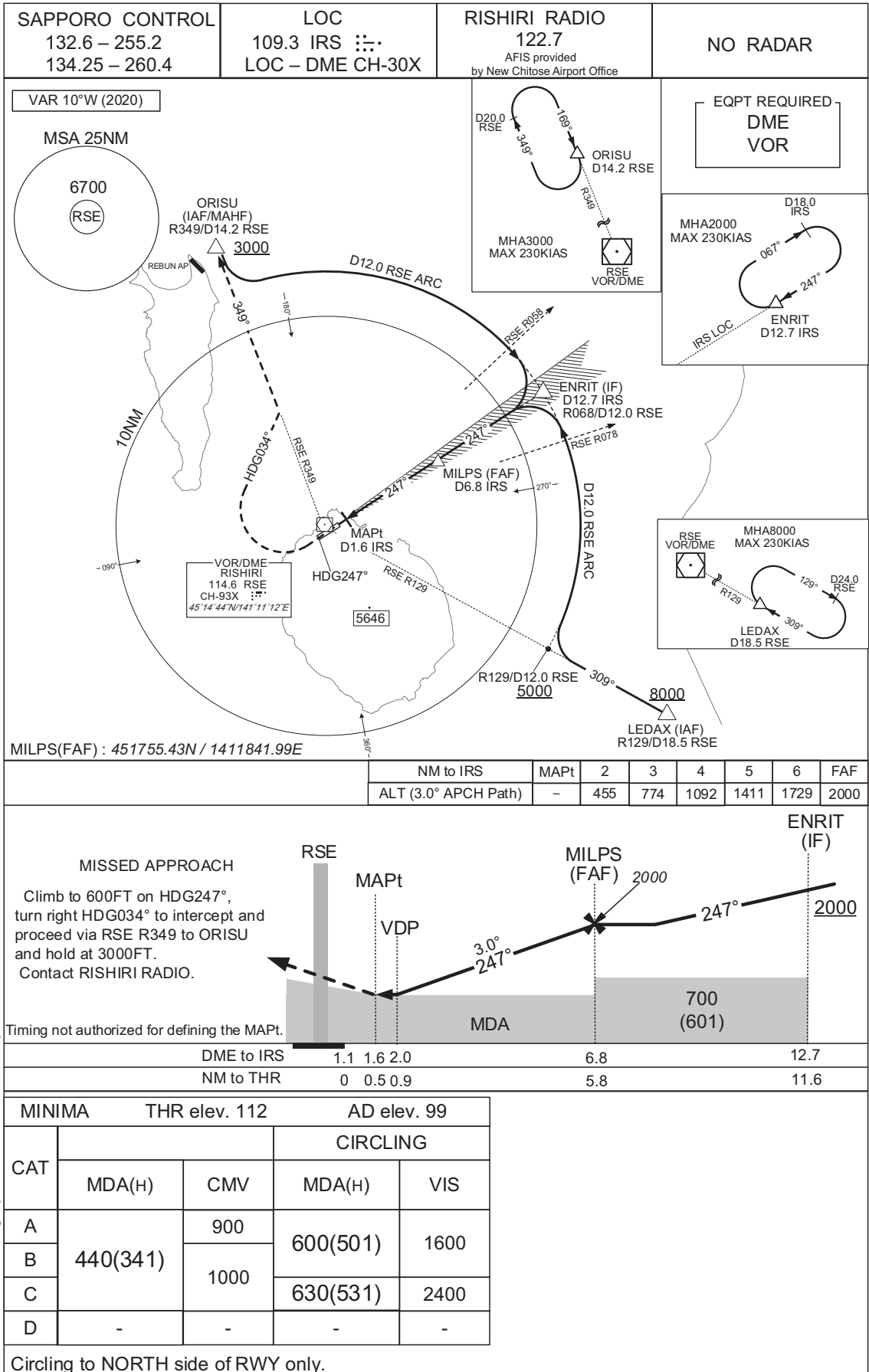
Serial Number	Path Descriptor	Waypoint Identifier	Fly Over	Course °M(°T)	Magnetic Variation	Distance (NM)	Turn Direction	Altitude (FT)	Speed (KIAS)	Vertical Angle	Navigation Specification
001	VA	-	-	247 (236.9)	-10.4	-	-	+600	-	-	RNP1
002	DF	ER500	-	-	-10.4	-	R	-	-	-	RNP1
003	TF	ER701	-	126 (115.9)	-10.4	15.0	-	-	-	-	RNP1
004	TF	LEDAX	-	172 (161.1)	-10.4	8.4	-	+8000	-	-	RNP1

CHANGE : Navigation Specification(Basic RNP1 → RNP1).

INSTRUMENT APPROACH CHART

RJER / RISHIRI

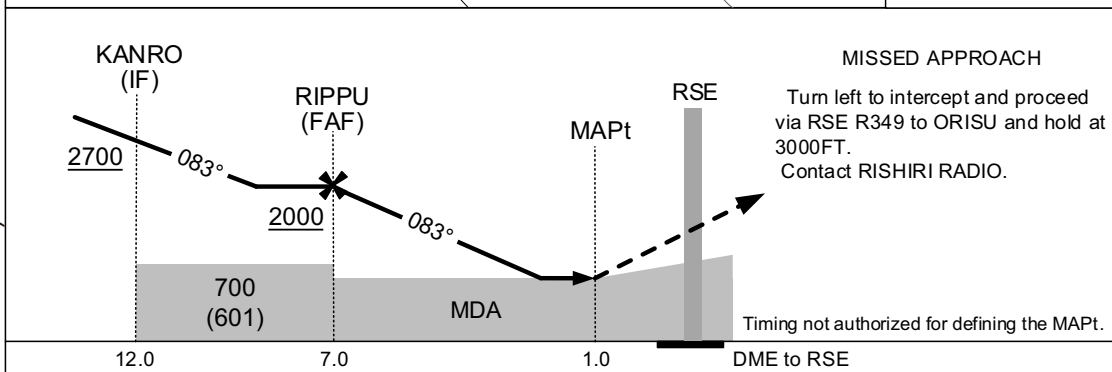
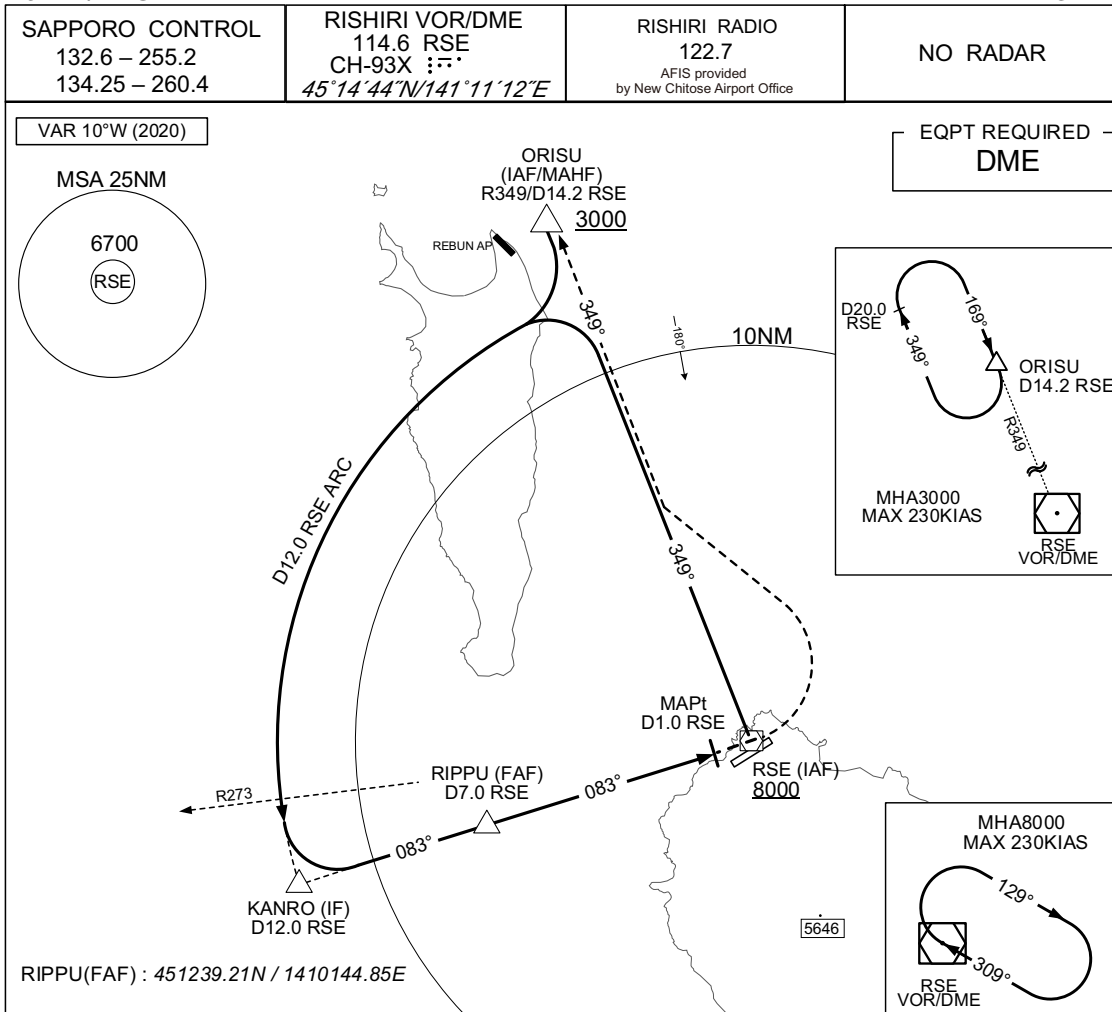
LOC RWY25



INSTRUMENT APPROACH CHART

RJER / RISHIRI

VOR A



MINIMA		AD elev. 99	
CAT	CIRCLING		
	MDA(H)	VIS	
A	610(511)	1600	
B	630(531)	2400	
D	-	-	

Circling to NORTH side of RWY only.

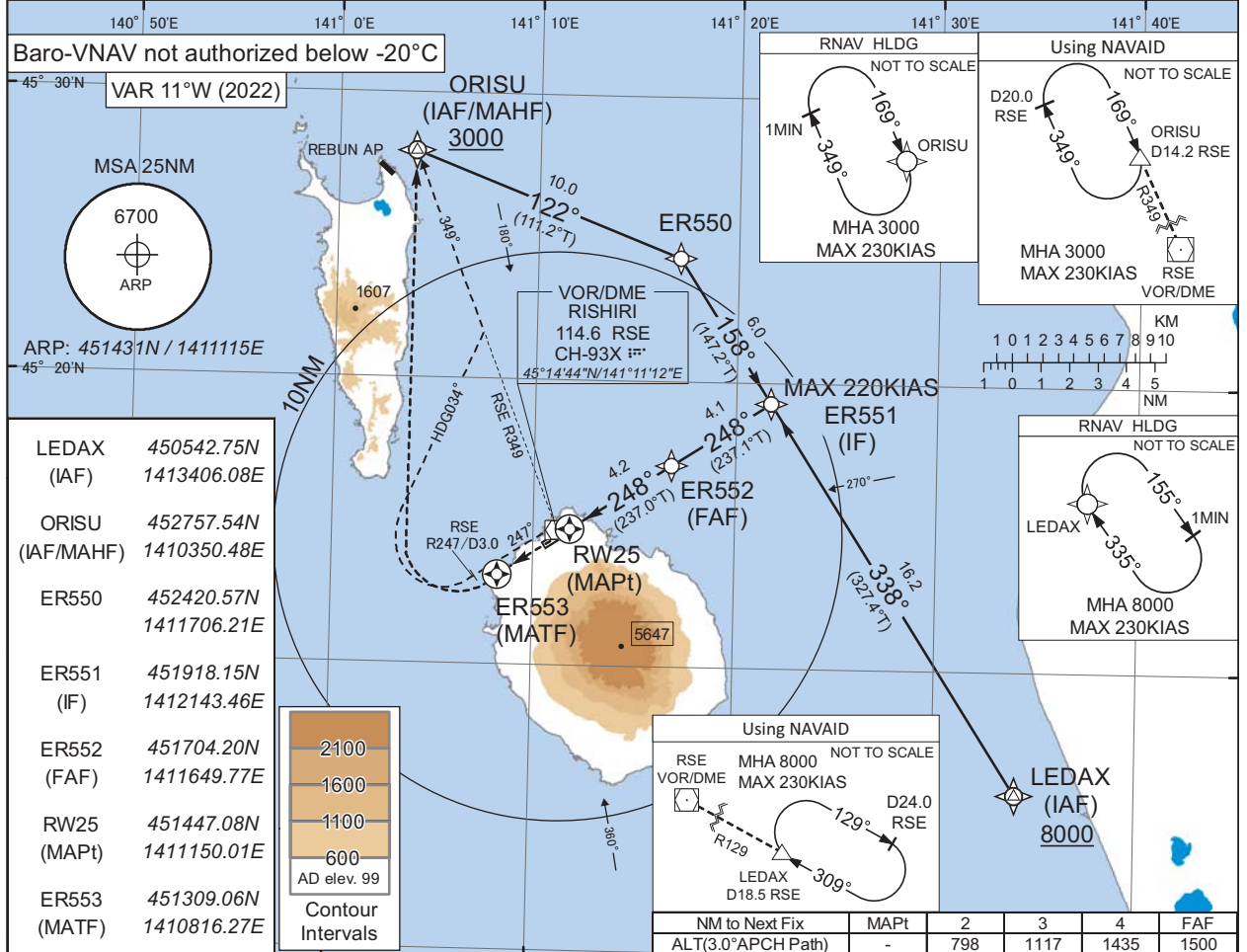
CHANGE : Call sign(REMOTE→RADIO). AFIS unit added.

INSTRUMENT APPROACH CHART

RJER / RISHIRI

RNP RWY25

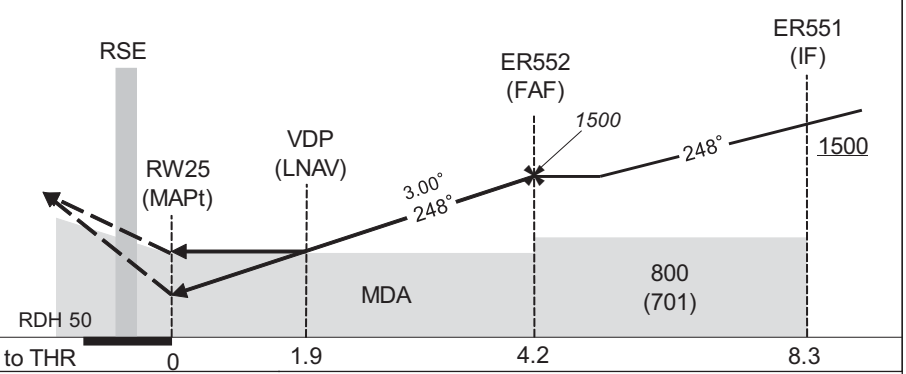
SAPPORO CONTROL 132.6 - 255.2 134.25 - 260.4	RNP APCH MSAS CH 45317 M25A	RISHIRI RADIO 122.7 AFIS provided by New Chitose Airport Office	NO RADAR
--	-----------------------------------	--	----------



MISSED APPROACH

Direct to ER553, turn right direct to ORISU and hold at 3000FT. Contact RISHIRI RADIO.

(For using VOR/DME)
Climb via RSE R247 to 3.0DME, turn right HDG034° to intercept and proceed via RSE R349 to ORISU and hold at 3000FT. Contact RISHIRI RADIO.



MINIMA		THR elev. 112				AD elev. 99			
CAT	LPV		LNAV/VNAV		LNAV		CIRCLING		VIS
	DA(H)	CMV	DA(H)	CMV	MDA(H)	CMV	MDA(H)		
A	397(285)	800	730(618)	1000	730(631)	1000	730(631)	1600	
B	407(295)			1200		1200		2400	
C	417(305)	1000	-	-	-	-	-	-	
D	-	-	-	-	-	-	-	-	

Circling to NORTH side of RWY only.

CHANGE : PROC renamed. Requirement for RNP.

INSTRUMENT APPROACH CHART

RJER / RISHIRI

RNP RWY25

FAS DATA BLOCK

Operation type	0	LTP/FTP ellipsoidal height	+00632
SBAS service provider identifier	2	FPAP latitude	451415.3275N
Airport identifier	RJER	FPAP longitude	1411040.7490E
Runway	25	Threshold crossing height	00015.0
Approach performance designator	0	TCH units selector	1
Route indicator		Glide path angle	03.00
Reference path data selector	0	Course width at threshold	105.00
Reference path ID	M25A	∠ length offset	0000
LTP/FTP latitude	451447.0530N	HAL	40.0
LTP/FTP longitude	1411149.9960E	VAL	50.0
CRC remainder	9A7FDBC0		

Required additional data

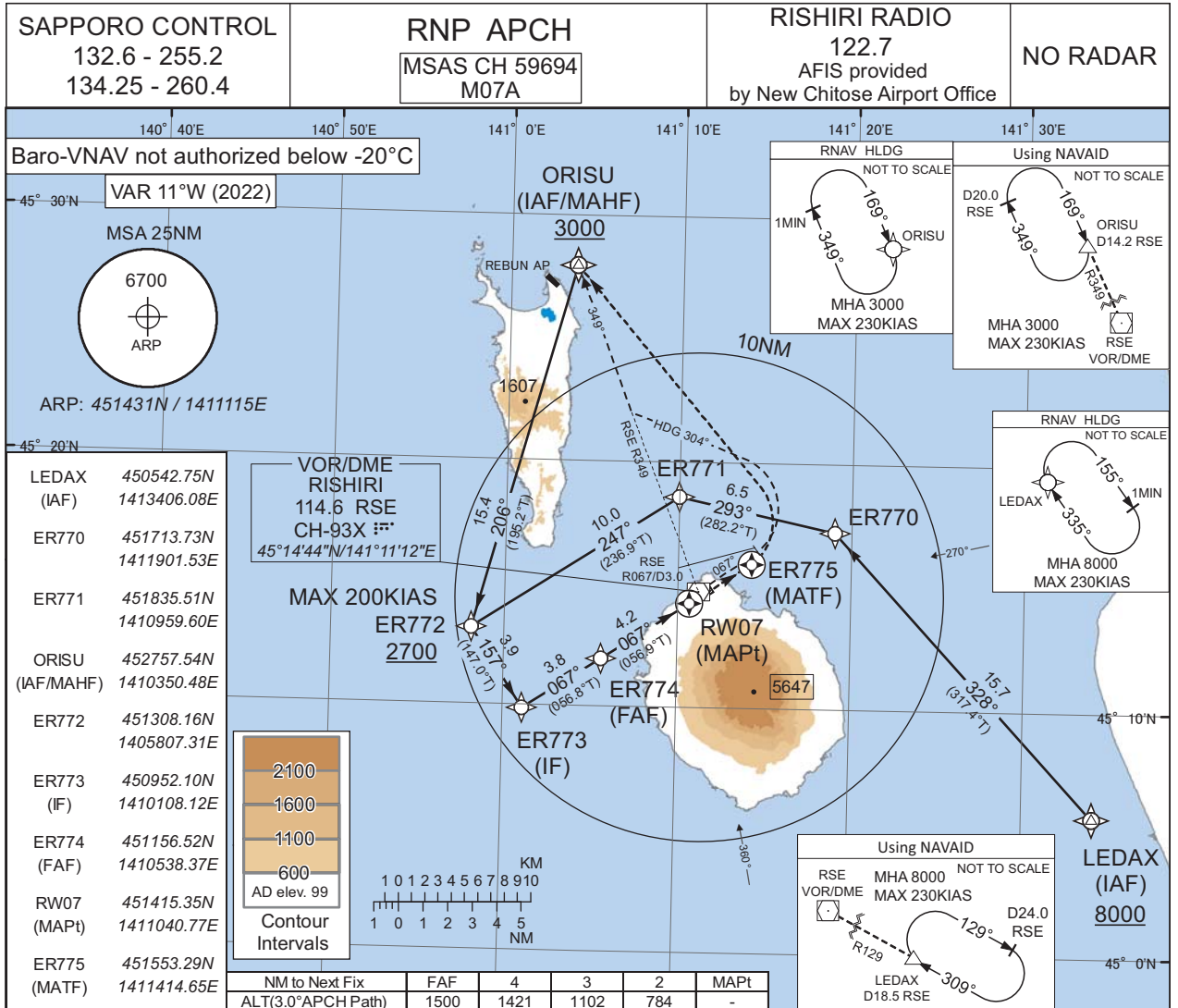
LTP/FTP orthometric height	34.5
----------------------------	------

CHANGE : Description of FAS DATA BLOCK ITEM(CRC remainder).

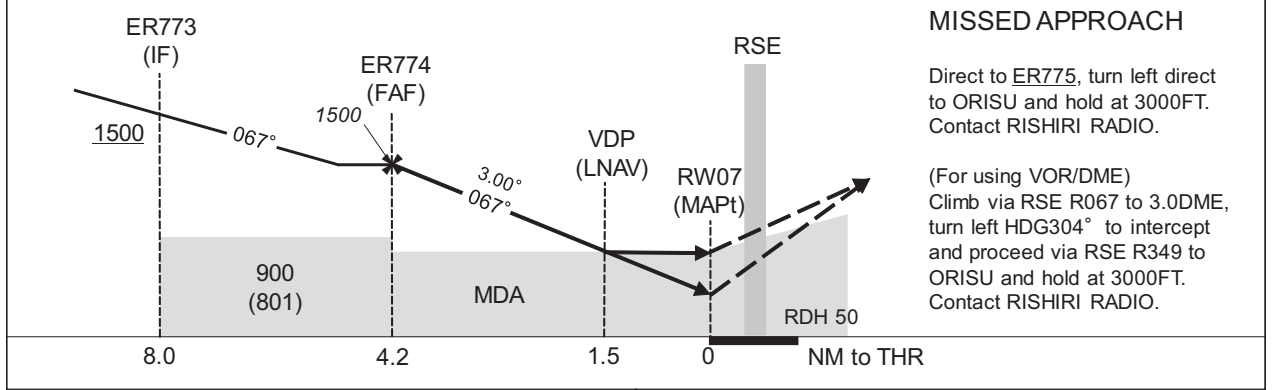
INSTRUMENT APPROACH CHART

RJER / RISHIRI

RNP RWY07



CHANGE : PROC renamed. Requirement for RNP.



MINIMA	THR elev. 98				AD elev. 99			
	LPV		LNAV/VNAV		LNAV		CIRCLING	
CAT	DA(H)	CMV	DA(H)	CMV	MDA(H)	CMV	MDA(H)	VIS
A	427(329)	1500	610(512)	1500	610(511)	1500	610(511)	1600
B	437(339)							
C	447(349)	1800	-	2000	-	2000	630(531)	2400
D	-	-	-	-	-	-	-	-

Circling to NORTH side of RWY only.

INSTRUMENT APPROACH CHART

RJR / RISHIRI

RNP RWY07

FAS DATA BLOCK

Operation type	0	LTP/FTP ellipsoidal height	+00590
SBAS service provider identifier	2	FPAP latitude	451447.0530N
Airport identifier	RJER	FPAP longitude	1411149.9960E
Runway	07	Threshold crossing height	00015.0
Approach performance designator	0	TCH units selector	1
Route indicator		Glide path angle	03.00
Reference path data selector	0	Course width at threshold	105.00
Reference path ID	M07A	∠ length offset	0000
LTP/FTP latitude	451415.3275N	HAL	40.0
LTP/FTP longitude	1411040.7490E	VAL	50.0
CRC remainder	138B8808		

Required additional data

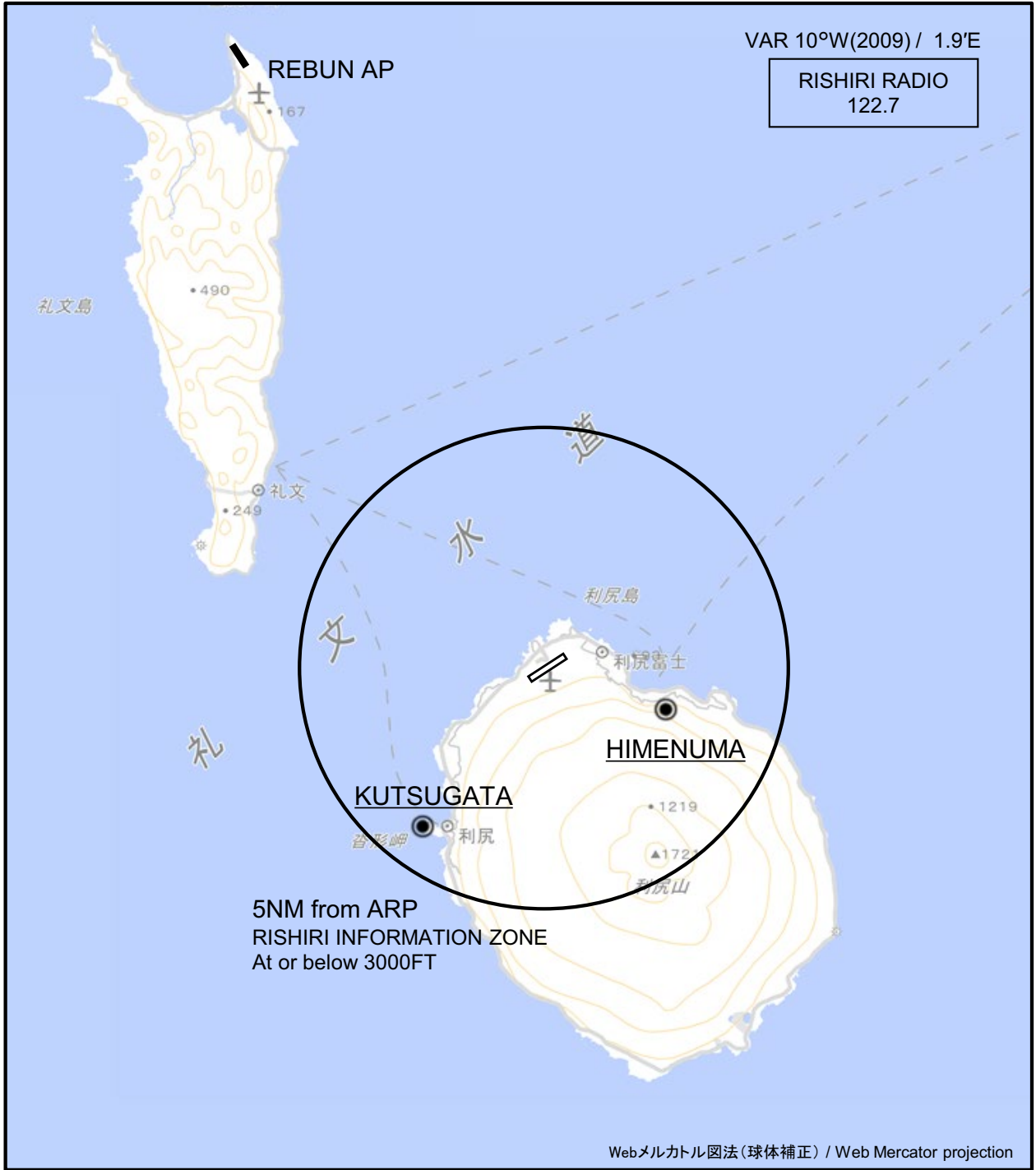
LTP/FTP orthometric height	30.2
----------------------------	------

CHANGE : Description of FAS DATA BLOCK ITEM(CRC remainder).

INSTRUMENT APPROACH CHART

RJER / RISHIRI

Visual REP



CHANGE : Call sign(REMOTE→RADIO).

※図中に標高を示す数字がある場合、単位はメートル(m)である。The unit of measurement used to express elevation is meter(m).

Call sign	BRG / DIST from ARP	Remarks
姫沼 Himenuma	110°T / 2.7NM	姫沼 Pond
沓形 Kutsugata	217°T / 4.2NM	沓形岬 Cape

Note : In the SE through SW of the airport, A/G COM from Rishiri Radio is blinded by Mt. Rishiri(1,721m/5,646ft).

RJER / RISHIRI

Minimum Vectoring Altitude CHART

