

STANDARD DEPARTURE CHART - INSTRUMENT

RJFA / ASHIYA

SID

CHANGE : PROC renamed(MISHIMA THREE DEPARTURE). PROC course(MISHIMA THREE DEPARTURE).

ASHIYA REVERSAL TWO DEPARTURE

RWY 12 : Turn left,....

RWY 30 : Turn right,....

....climb via AHT R030, turn left to intercept and proceed via AHT R030 to AHT TACAN within AHT 35.0DME.

Cross AHT TACAN at assigned altitude.

Note : When take off RWY12 : climb gradient 300FT/NM until 1000FT.

ASHIYA EAST FIVE DEPARTURE

RWY 12 : Turn left,....

RWY 30 : Turn right,....

....climb via AHT R030 to AHT R030/23.0DME, turn right, proceed via IWT R287 to IWT TACAN.

Cross AHT R030/23.0DME at or above 8000FT, cross IWT R287 /56.0DME at or above FL170 or specified altitude and cross IWT R287 /41.0DME at assigned or specified altitude.

Note : When take off RWY12 : climb gradient 300FT/NM until 1000FT.

MISHIMA THREE DEPARTURE

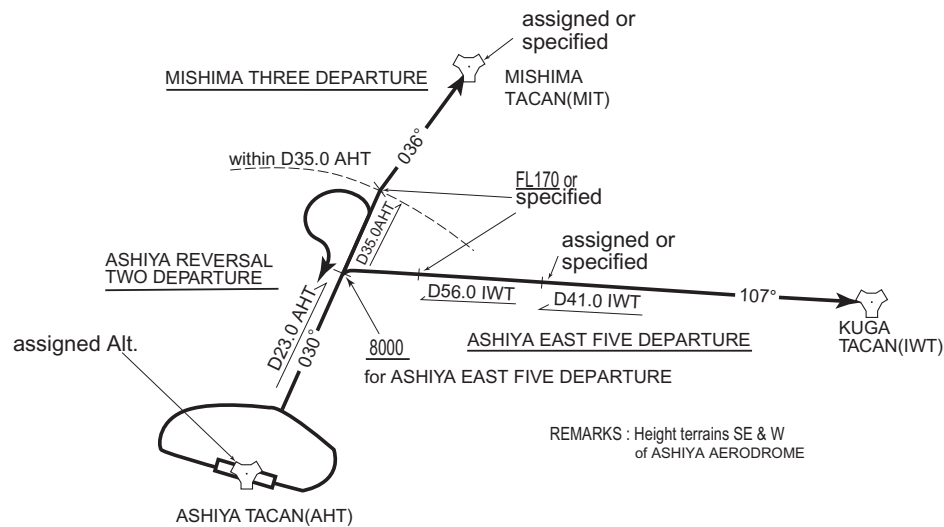
RWY 12 : Turn left,....

RWY 30 : Turn right,....

....climb via AHT R030 to AHT R030/35.0DME, turn right, proceed via MIT R216 to MIT TACAN.

Cross AHT R030/35.0DME at or above FL170 or specified altitude, cross MIT TACAN at assigned or specified altitude.

Note : When take off RWY12 : climb gradient 300FT/NM until 1000FT.



INTENTIONALLY LEFT BLANK

STANDARD ARRIVAL CHART - INSTRUMENT

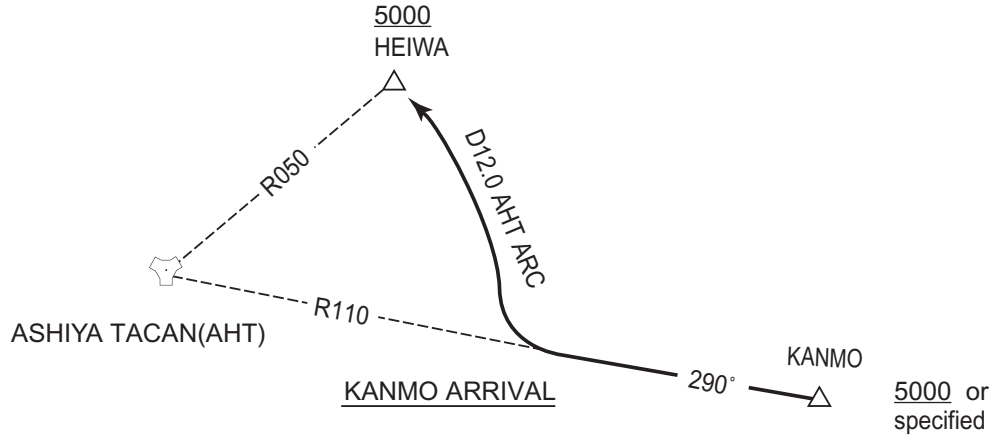
RJFA / ASHIYA

STAR

KANMO ARRIVAL

From over KANMO, proceed via AHT R110 to AHT 12.0DME, then turn right via AHT 12.0DME counterclockwise ARC to HEIWA .

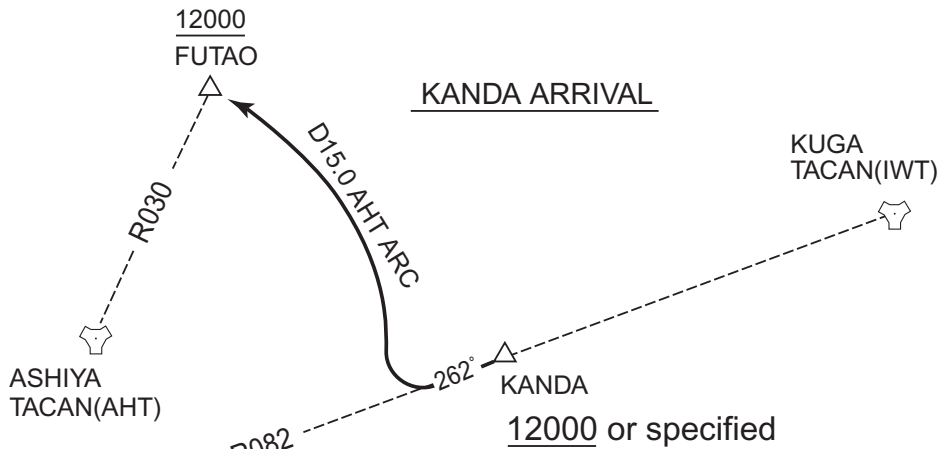
Cross KANMO at or above 5000FT or altitude specified by ATC, cross HEIWA at or above 5000FT.



KANDA ARRIVAL

From over KANDA, proceed via DGC R082 to intercept and proceed via AHT 15.0DME counterclockwise ARC to FUTAO .

Cross KANDA at or above 12000FT or altitude specified by ATC and cross FUTAO at or above 12000FT.



CHANGE : KANMO ARRIVAL. Editorial.

VORTAC
FUKUOKA
114.5 DGC
CH-92X
33°40'34"N/130°23'23"E
100FT

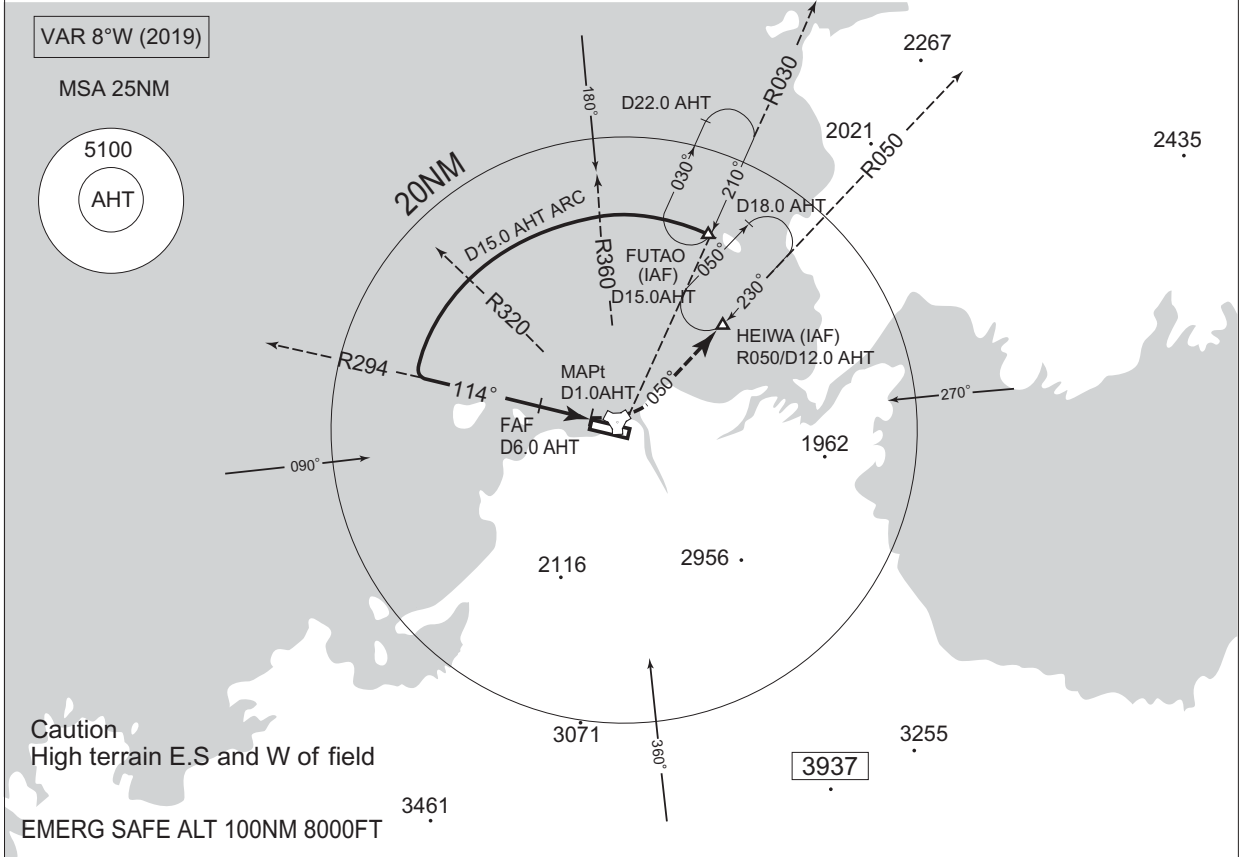
DGC R082
to FUKUOKA
VORTAC(DGC)

INTENTIONALLY LEFT BLANK

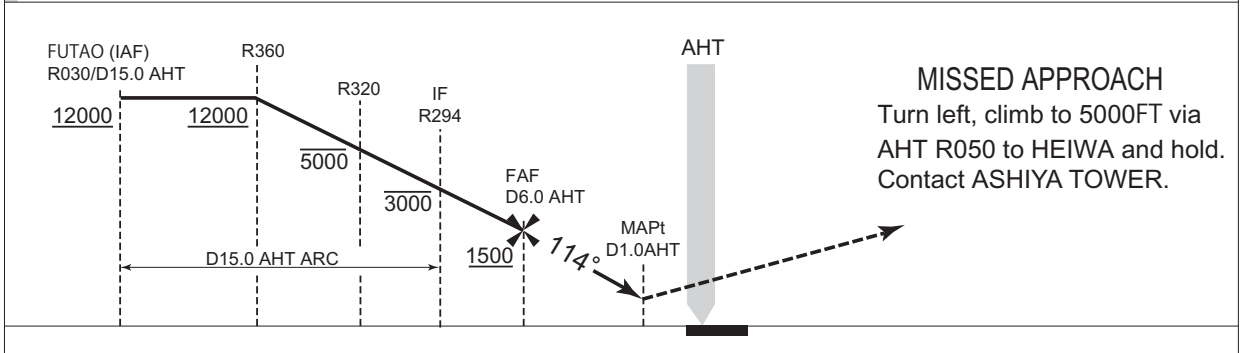
INSTRUMENT APPROACH CHART

RJFA / ASHIYA TACAN Z RWY12

FUKUOKA RADAR 279.2 - 119.7	ASHIYA TACAN 984 AHT CH-23 ㊦ 33°53'15"N/130°39'00"E	ASHIYA TOWER 236.8 - 126.2 305.7 - 275.8 G	GCA AVAILABLE
--------------------------------	--	--	---------------



CHANGE: ATC call sign changed (FUKUOKA APP → FUKUOKA RADAR, GCA AVAILABLE CALL FUKUOKA APP → GCA AVAILABLE).
ATC FREQ changed.



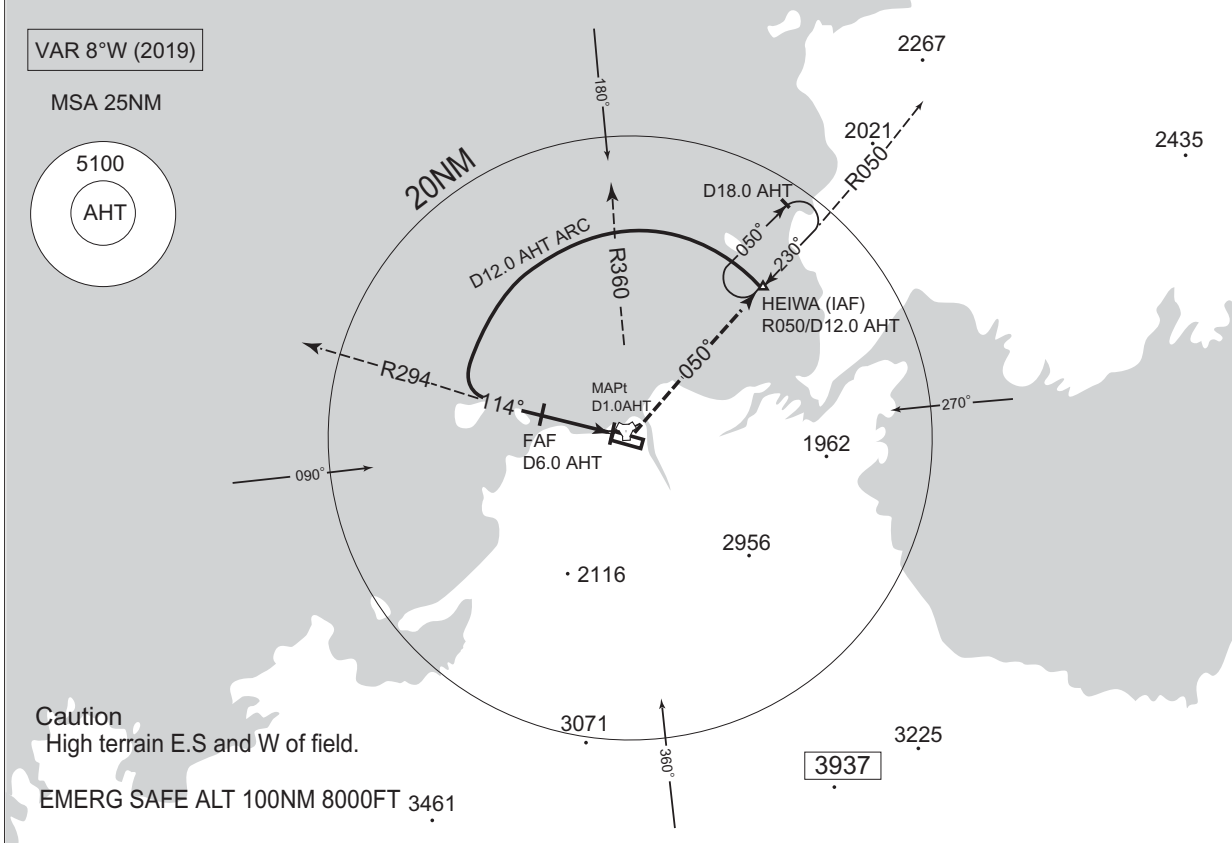
MINIMA		THR elev. 59	AD elev. 98	
CAT	MDA(H)	RVR/ CMV	CIRCLING	
			MDA(H)	VIS
A	500 (441)	1500	540 (442)	1600
B			560 (462)	
C		1800	2400	
D		2000	680 (582)	3200

INSTRUMENT APPROACH CHART

RJFA / ASHIYA

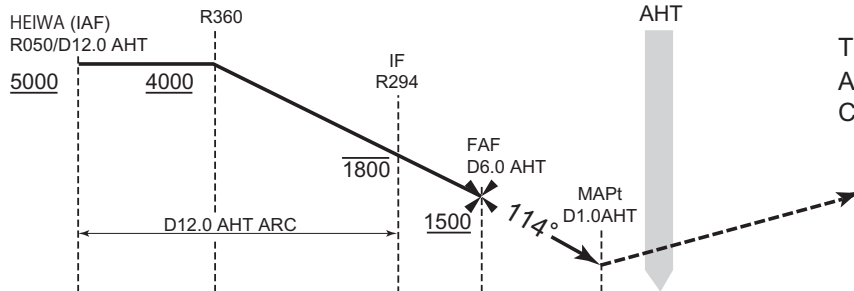
TACAN Y RWY12

FUKUOKA RADAR 279.2 - 119.7	ASHIYA TACAN 984 AHT CH-23 33°53'15"N/130°39'00"E	ASHIYA TOWER 236.8 - 126.2 305.7 - 275.8G	GCA AVAILABLE
--------------------------------	--	---	---------------



Caution
High terrain E.S and W of field.

EMERG SAFE ALT 100NM 8000FT 3461



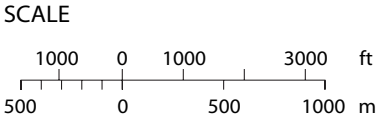
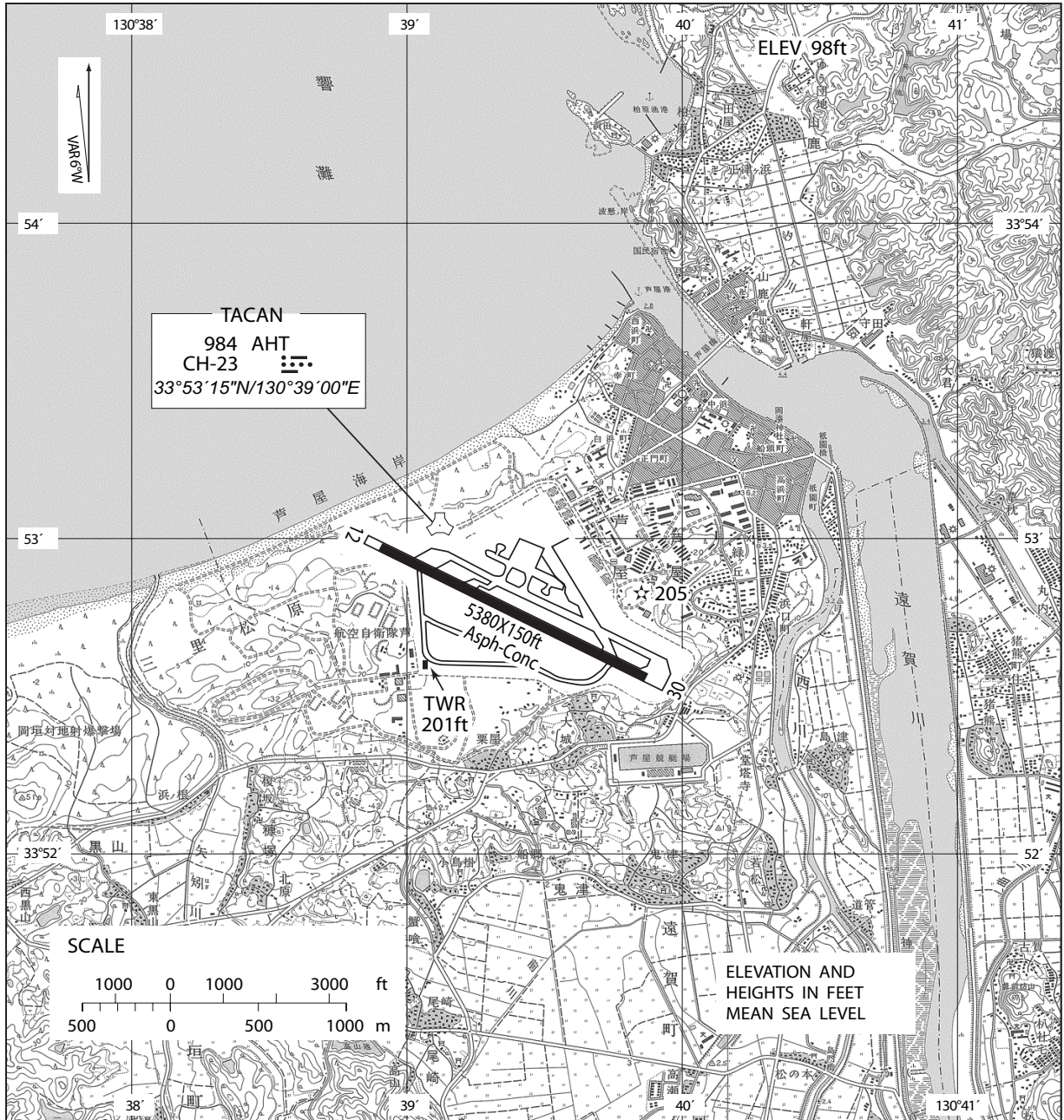
MISSED APPROACH
Turn left, climb to 5000FT via
AHT R050 to HEIWA and hold.
Contact ASHIYA TOWER.

CAT	MINIMA		THR elev. 59	AD elev. 98
	MDA(H)	RVR/CMV	CIRCLING	
A	500 (441)	1500	540 (442)	1600
B			560 (462)	
C			680 (582)	2400
D			680 (582)	3200

CHANGE: ATC call sign changed (FUKUOKA APP → FUKUOKA RADAR, GCA AVAILABLE CALL FUKUOKA APP → GCA AVAILABLE).
ATC FREQ changed.

RJFA / ASHIYA

LDG CHART



ELEVATION AND HEIGHTS IN FEET MEAN SEA LEVEL

AERODROME LIGHTING

- Aerodrome beacon : Alternating flashing white / green
- Runway edge light : white
- Runway threshold light : green
- Precision approach path indicator
- Other lights : Blue taxiway edge lights, Lighted wind direction, Landing direction indicator, Take-off target lights.