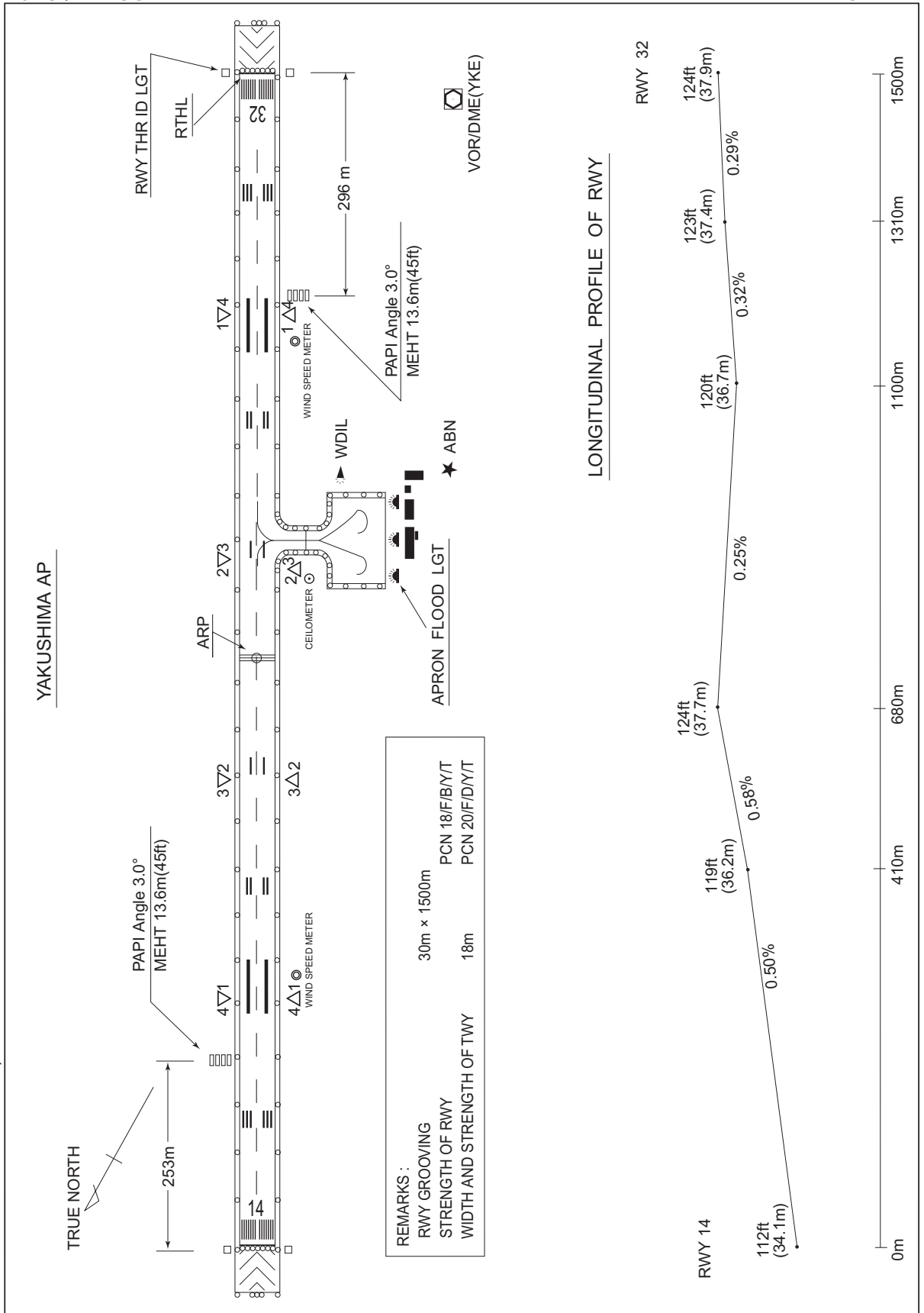


RJFC / YAKUSHIMA

AD CHART

CHANGE : CEILOMETER, WIND SPEED METER added.



STANDARD DEPARTURE CHART-INSTRUMENT

RJFC / YAKUSHIMA

SID

NAKATANE FOUR DEPARTURE

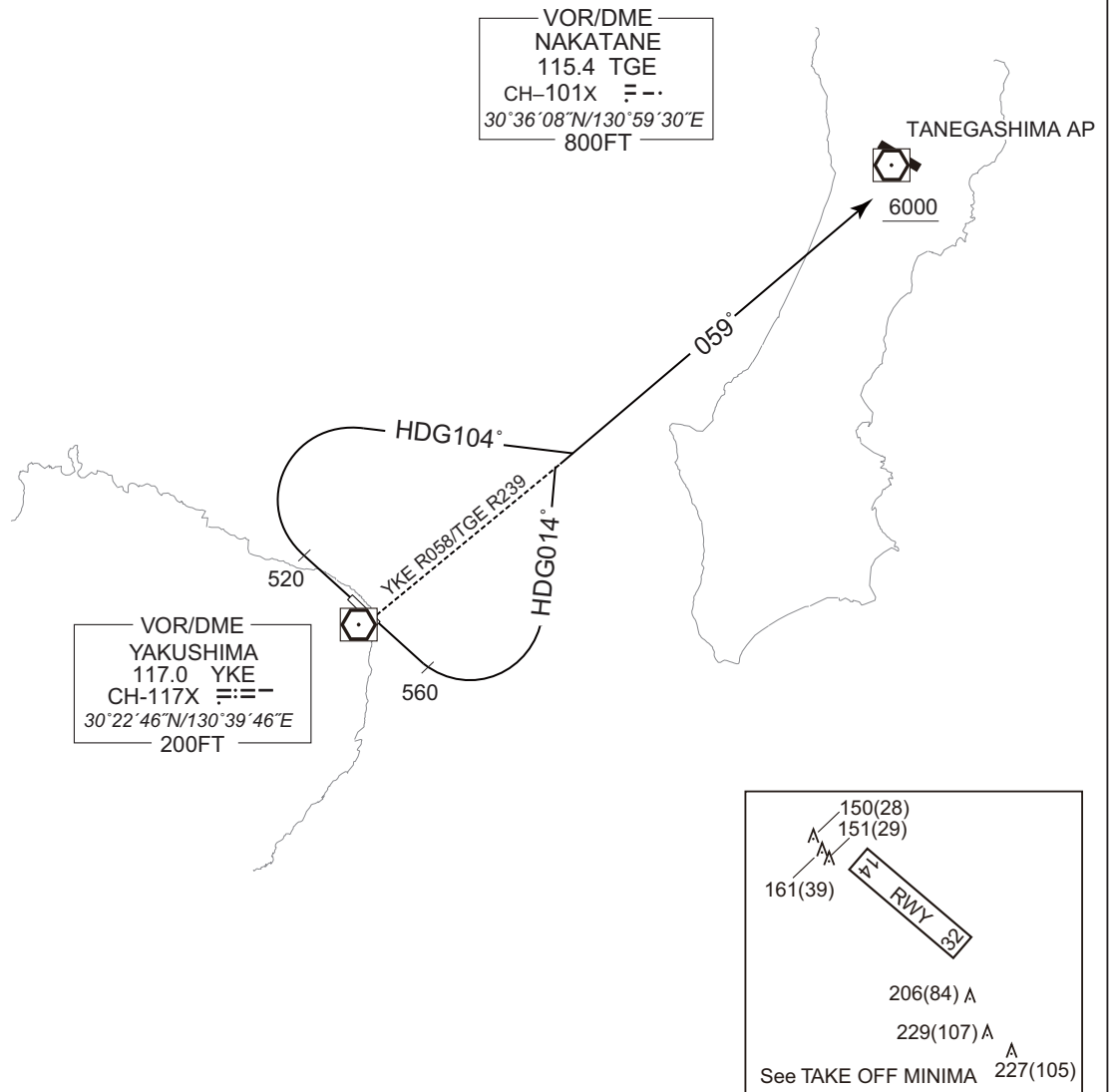
RWY14 : Climb RWY HDG to 560FT, turn left HDG014°...

RWY32 : Climb RWY HDG to 520FT, turn right HDG104°...

... to intercept and proceed via YKE R058/TGE R239 to TGE VOR/DME.  
Cross TGE VOR/DME at or above 6000FT.

Note RWY14 : In case of climbing with 8.8% gradient up to 560FT,  
another TKOF WX MINIMA is applicable.  
OBST ALT 206FT located at 0.2NM 180° FM end of RWY14.

CHANGE : PROC renamed. KAGOSHIMA SEVEN DEPARTURE abolished. PROC course. Note. OBST chart added.



STANDARD DEPARTURE CHART -INSTRUMENT

RJFC / YAKUSHIMA

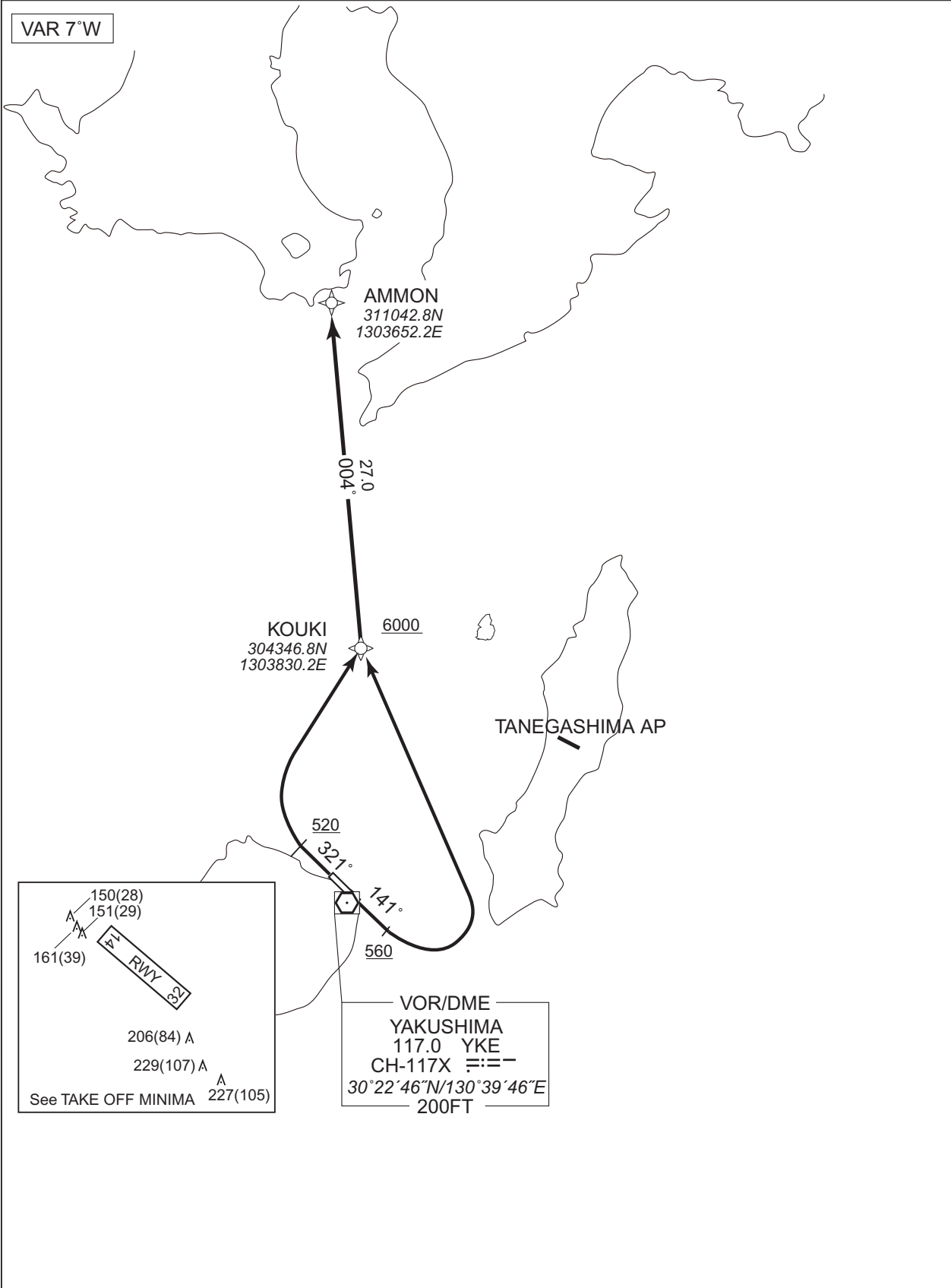
RNAV SID

AMMON FOUR DEPARTURE

RNP1

Note GNSS required.

VAR 7°W



CHANGE : Navigation Specification(Basic RNP1 → RNP1).

STANDARD DEPARTURE CHART -INSTRUMENT

RJFC / YAKUSHIMA

RNAV SID

AMMON FOUR DEPARTURE

RWY14 : Climb on HDG 141° at or above 560FT, turn left direct to KOUKI at or above 6000FT, to AMMON.

RWY32 : Climb on HDG 321° at or above 520FT, turn right direct to KOUKI at or above 6000FT, to AMMON.

Note RWY14 : In case of climbing with 8.8% gradient up to 560FT,  
another TKOF WX MINIMA is applicable.

OBST ALT 206FT located at 0.2NM 180° FM end of RWY14.

RWY14

Serial Number	Path Descriptor	Waypoint Identifier	Fly Over	Course °M(°T)	Magnetic Variation	Distance (NM)	Turn Direction	Altitude (FT)	Speed (KIAS)	Vertical Angle	Navigation Specification
001	VA	-	-	141 (134.0)	-6.9	-	-	+560	-	-	RNP1
002	DF	KOUKI	-	-	-6.9	-	L	+6000	-	-	RNP1
003	TF	AMMON	-	004 (357.0)	-6.9	27.0	-	-	-	-	RNP1

RWY32

Serial Number	Path Descriptor	Waypoint Identifier	Fly Over	Course °M(°T)	Magnetic Variation	Distance (NM)	Turn Direction	Altitude (FT)	Speed (KIAS)	Vertical Angle	Navigation Specification
001	VA	-	-	321 (314.0)	-6.9	-	-	+520	-	-	RNP1
002	DF	KOUKI	-	-	-6.9	-	R	+6000	-	-	RNP1
003	TF	AMMON	-	004 (357.0)	-6.9	27.0	-	-	-	-	RNP1

CHANGE : Navigation Specification(Basic RNP1 → RNP1).

STANDARD DEPARTURE CHART -INSTRUMENT

RJFC / YAKUSHIMA

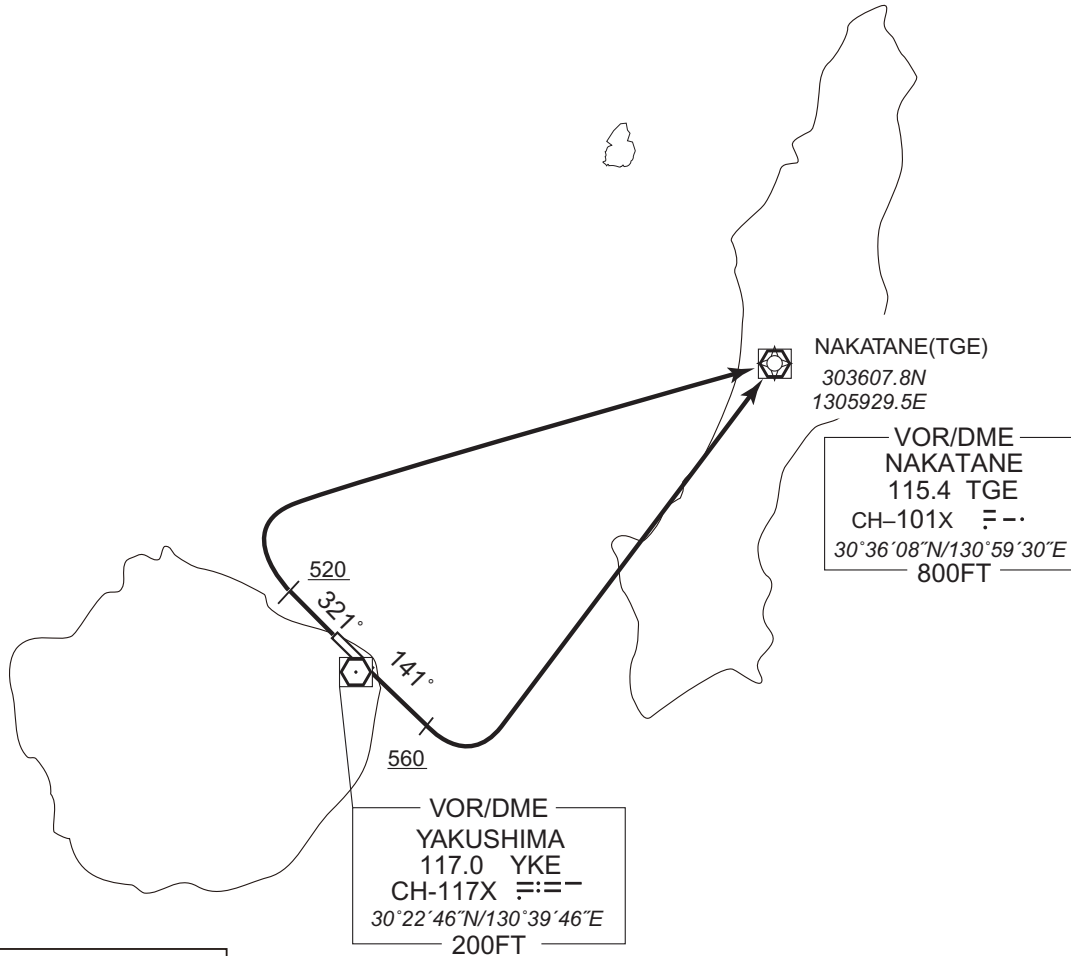
RNAV SID

SURF TWO DEPARTURE

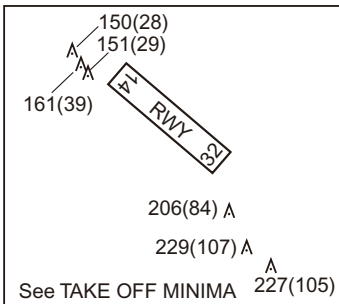
RNP1

Note GNSS required.

VAR 7°W



CHANGE : Navigation Specification(Basic RNP1 → RNP1).



STANDARD DEPARTURE CHART -INSTRUMENT

RJFC / YAKUSHIMA

RNAV SID

SURF TWO DEPARTURE

RWY14 : Climb on HDG 141° at or above 560FT, turn left direct to TGE.

RWY32 : Climb on HDG 321° at or above 520FT, turn right direct to TGE.

Note RWY14 : In case of climbing with 8.8% gradient up to 560FT,  
another TKOF WX MINIMA is applicable.

OBST ALT 206FT located at 0.2NM 180° FM end of RWY14.

RWY14

Serial Number	Path Descriptor	Waypoint Identifier	Fly Over	Course °M(°T)	Magnetic Variation	Distance (NM)	Turn Direction	Altitude (FT)	Speed (KIAS)	Vertical Angle	Navigation Specification
001	VA	-	-	141 (134.0)	-6.9	-	-	+560	-	-	RNP1
002	DF	TGE	-	-	-6.9	-	L	-	-	-	RNP1

RWY32

Serial Number	Path Descriptor	Waypoint Identifier	Fly Over	Course °M(°T)	Magnetic Variation	Distance (NM)	Turn Direction	Altitude (FT)	Speed (KIAS)	Vertical Angle	Navigation Specification
001	VA	-	-	321 (314.0)	-6.9	-	-	+520	-	-	RNP1
002	DF	TGE	-	-	-6.9	-	R	-	-	-	RNP1

CHANGE : Navigation Specification(Basic RNP1 → RNP1).

STANDARD ARRIVAL CHART-INSTRUMENT

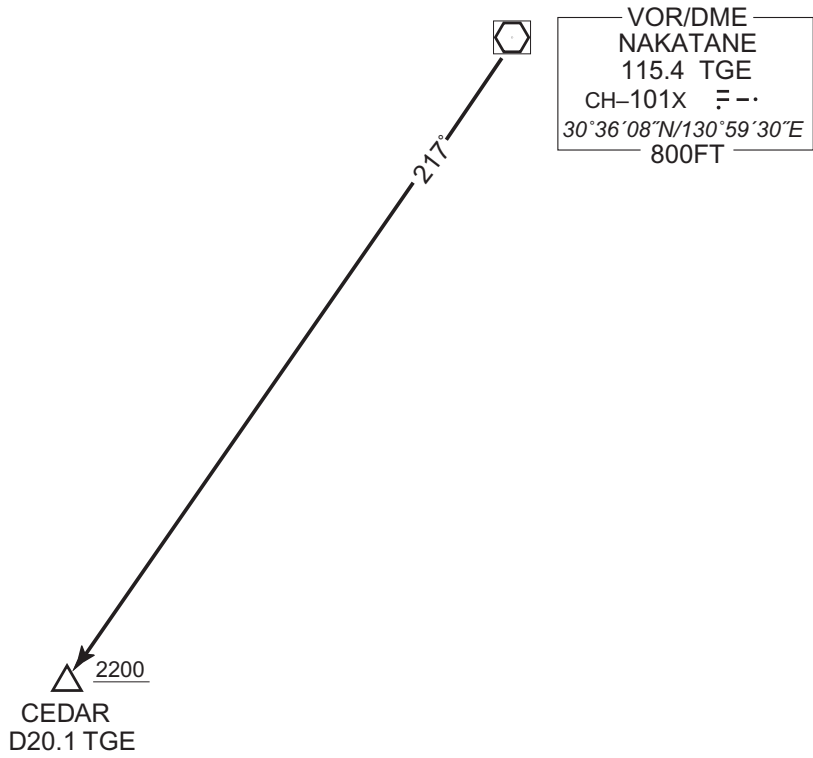
RJFC / YAKUSHIMA

STAR

CEDAR ARRIVAL

From over TGE VOR/DME, via TGE R217 to CEDAR.

Cross CEDAR at or above 2200 FT.



CHANGE : JOMON ARRIVAL abolished.

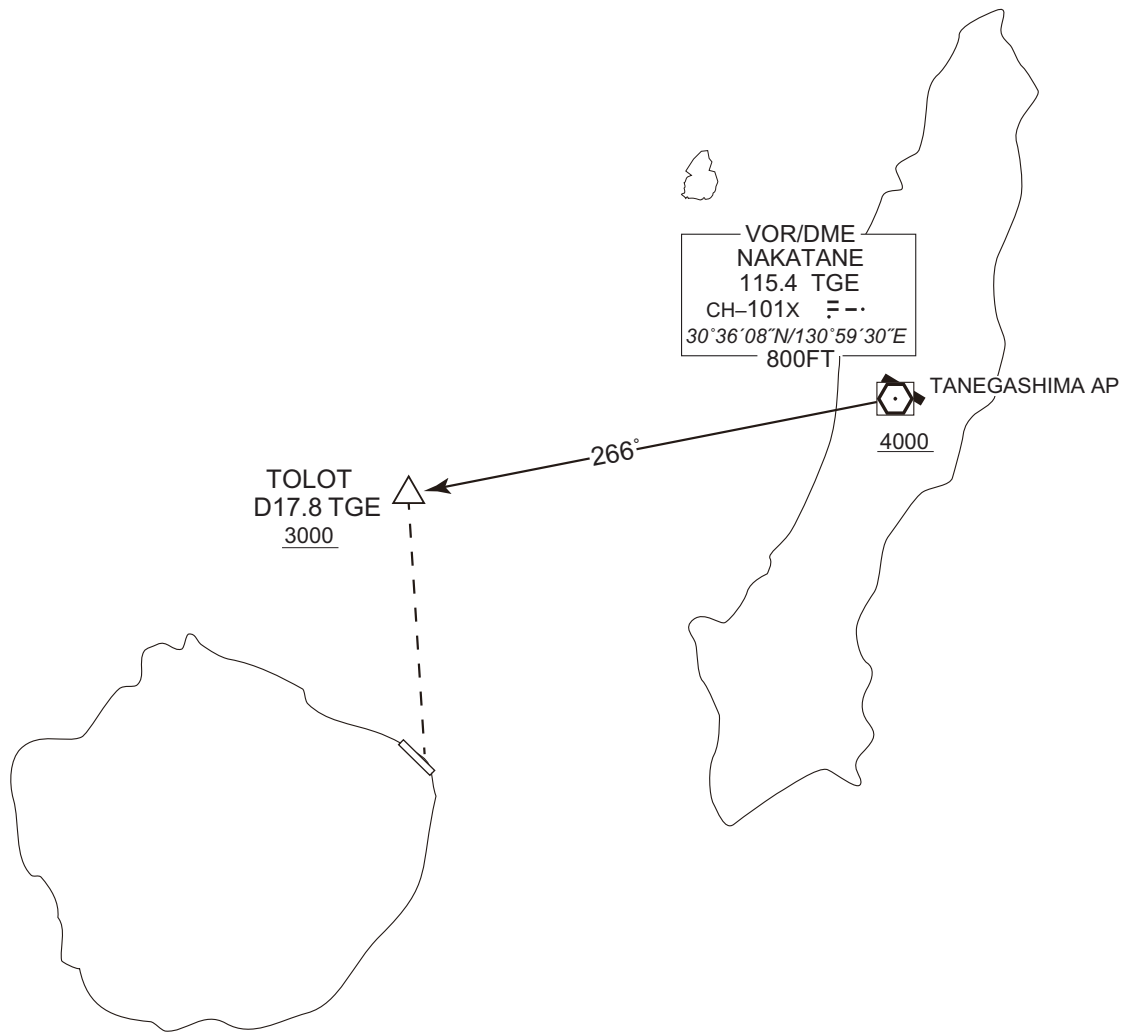
STANDARD ARRIVAL CHART-INSTRUMENT

RJFC / YAKUSHIMA

STAR

TOLOT ARRIVAL

From over TGE VOR/DME, via TGE R266 to TOLOT.  
Cross TGE VOR/DME at or above 4000FT, cross TOLOT at or above 3000FT.



CHANGE : New PROC.

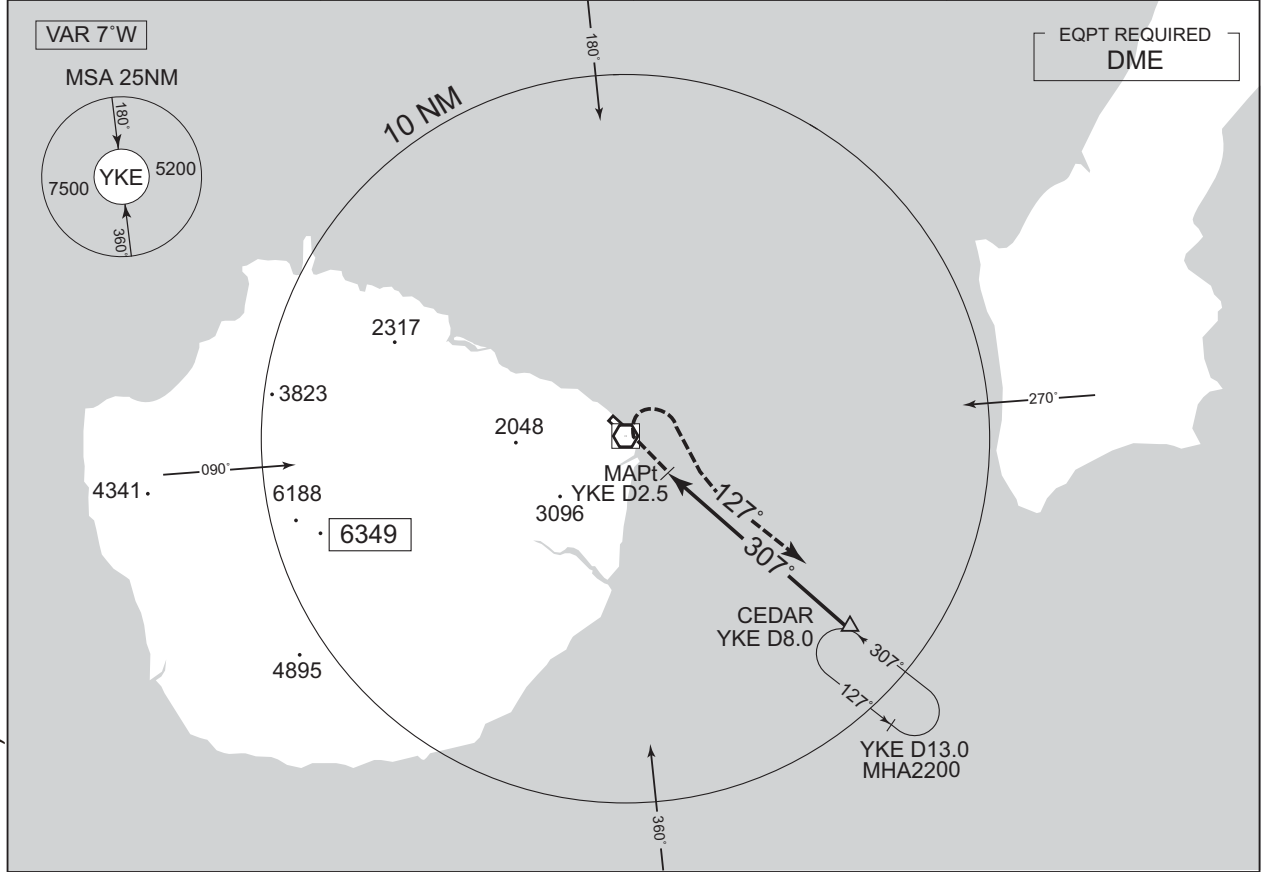


INSTRUMENT APPROACH CHART

RJFC / YAKUSHIMA

VOR RWY 32

<b>KOBE CONTROL</b> 133.85 - 315.3 134.6 - 225.65	<b>YAKUSHIMA VOR/DME</b> 117.0 YKE CH-117 $\equiv\equiv\equiv$ 30°22'46"N/130°39'46"E	<b>YAKUSHIMA RADIO</b> 118.65 AFIS provided by Kagoshima Airport Office	<b>NO RADAR</b>
---	--	--	-----------------



CHANGE : FREQ of KOBE CONTROL(127.15 → 134.6, 251.0 → 225.65).

**MISSED APPROACH**  
 At 2.5 DME prior to YKE VOR/DME,  
 turn right and climb to 2200FT via YKE  
 R127 to CEDAR and hold.  
 Contact YAKUSHIMA RADIO.

DME to YKE		2.5	8.0
------------	--	-----	-----

<b>MINIMA</b>		THR elev. 124	AD elev. 122	
CAT	CIRCLING			
	MDA(H)	CMV	MDA(H)	VIS
A	580 (458)	1500	660 (538)	1600
B			700 (578)	2400
C			-	-
D	-	-	-	-

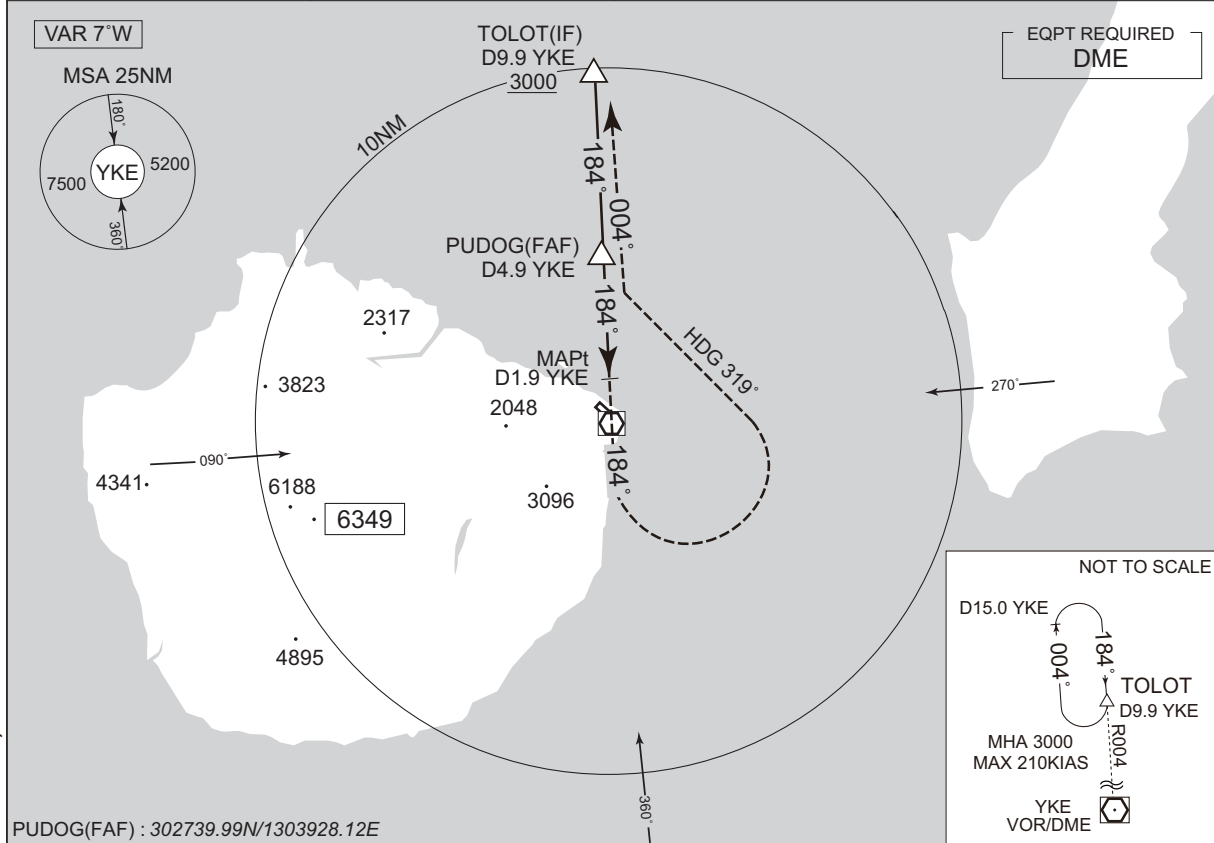
Circling to EAST side of RWY only.

INSTRUMENT APPROACH CHART

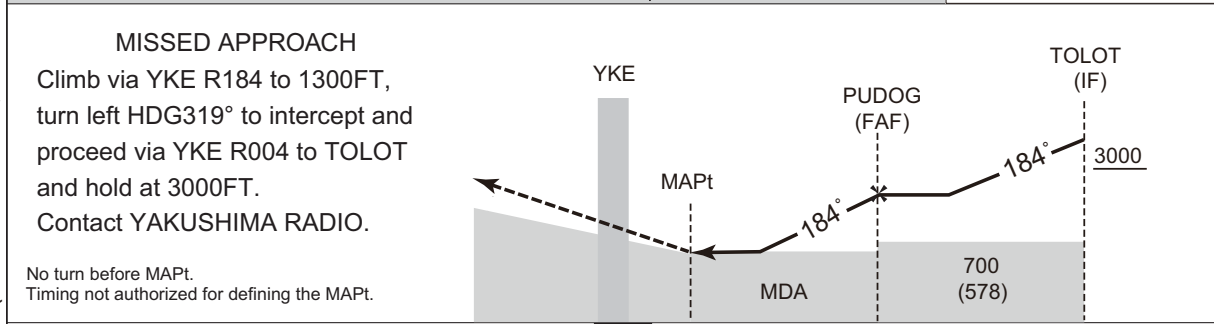
RJFC / YAKUSHIMA

VOR A

KOBE CONTROL 133.85 - 315.3 134.6 - 225.65	YAKUSHIMA VOR/DME 117.0 YKE CH-117 $\equiv \equiv \equiv$ 30°22'46"N/130°39'46"E	YAKUSHIMA RADIO 118.65 AFIS provided by Kagoshima Airport Office	NO RADAR
--	---	---	----------



CHANGE : FREQ of KOBE CONTROL (127.15 → 134.6, 251.0 → 225.65).



Missed APCH climb gradient MNM 5.0%

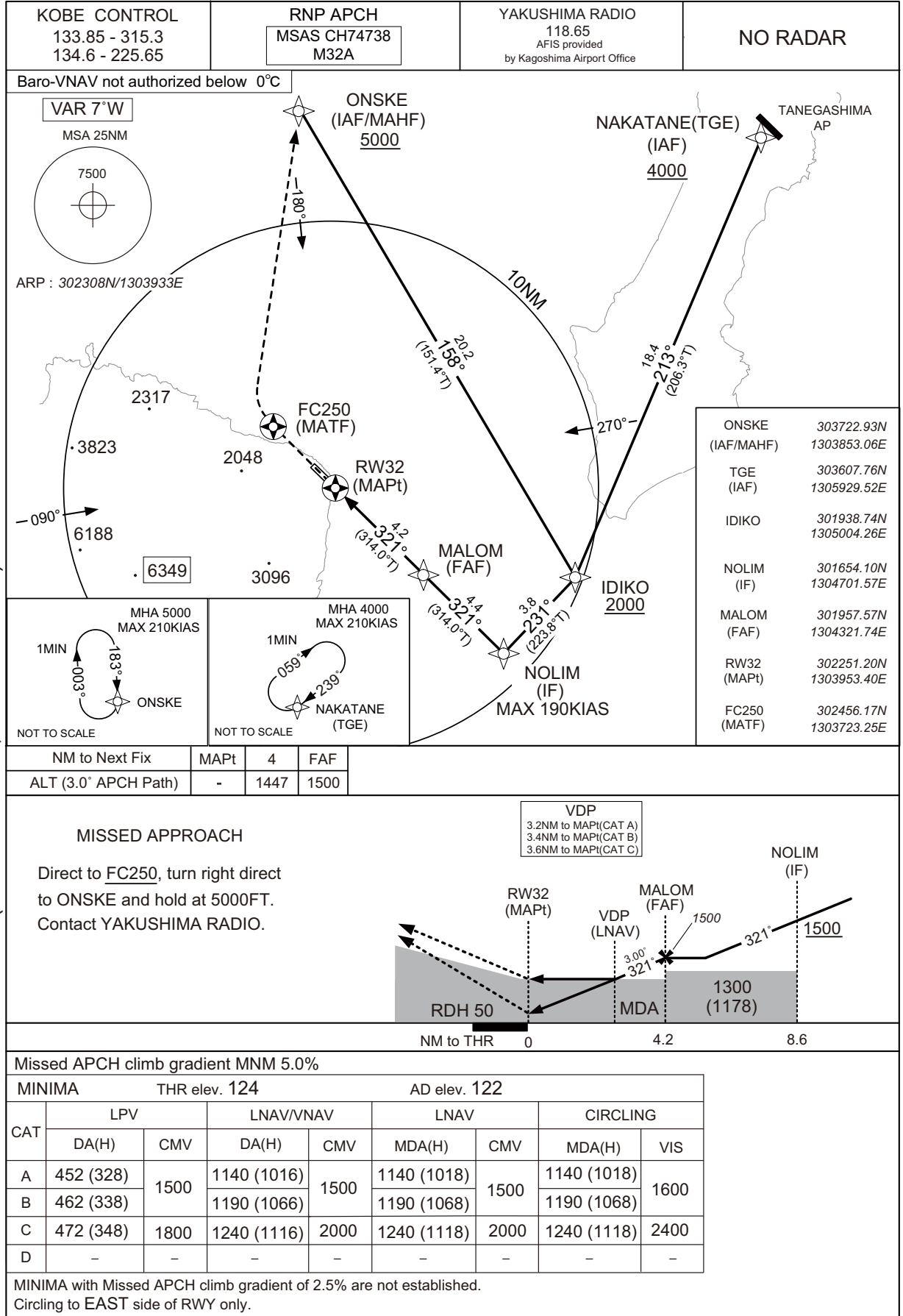
MINIMA		AD elev. 122
CAT	CIRCLING	
	MDA(H)	VIS
A	660 (538)	1600
B	700 (578)	2400
C	-	-
D	-	-

MINIMA with Missed APCH climb gradient of 2.5% are not established.  
 Circling to EAST side of RWY only.

INSTRUMENT APPROACH CHART

RJFC / YAKUSHIMA

RNP RWY 32



CHANGE : FREQ of KOBE CONTROL(127.15 → 134.6, 251.0 → 225.65).

INSTRUMENT APPROACH CHART

RJFC / YAKUSHIMA

RNP RWY32

**FAS DATA BLOCK**

Operation type	0	LTP/FTP ellipsoidal height	+00675
SBAS service provider identifier	2	FPAP latitude	302329.2980N
Airport identifier	RJFC	FPAP longitude	1303907.6190E
Runway	32	Threshold crossing height	00015.0
Approach performance designator	0	TCH units selector	1
Route indicator		Glide path angle	03.00
Reference path data selector	0	Course width at threshold	105.00
Reference path ID	M32A	∠ length offset	0192
LTP/FTP latitude	302251.1820N	HAL	40.0
LTP/FTP longitude	1303953.4230E	VAL	50.0
CRC remainder	7043F61C		

**Required additional data**

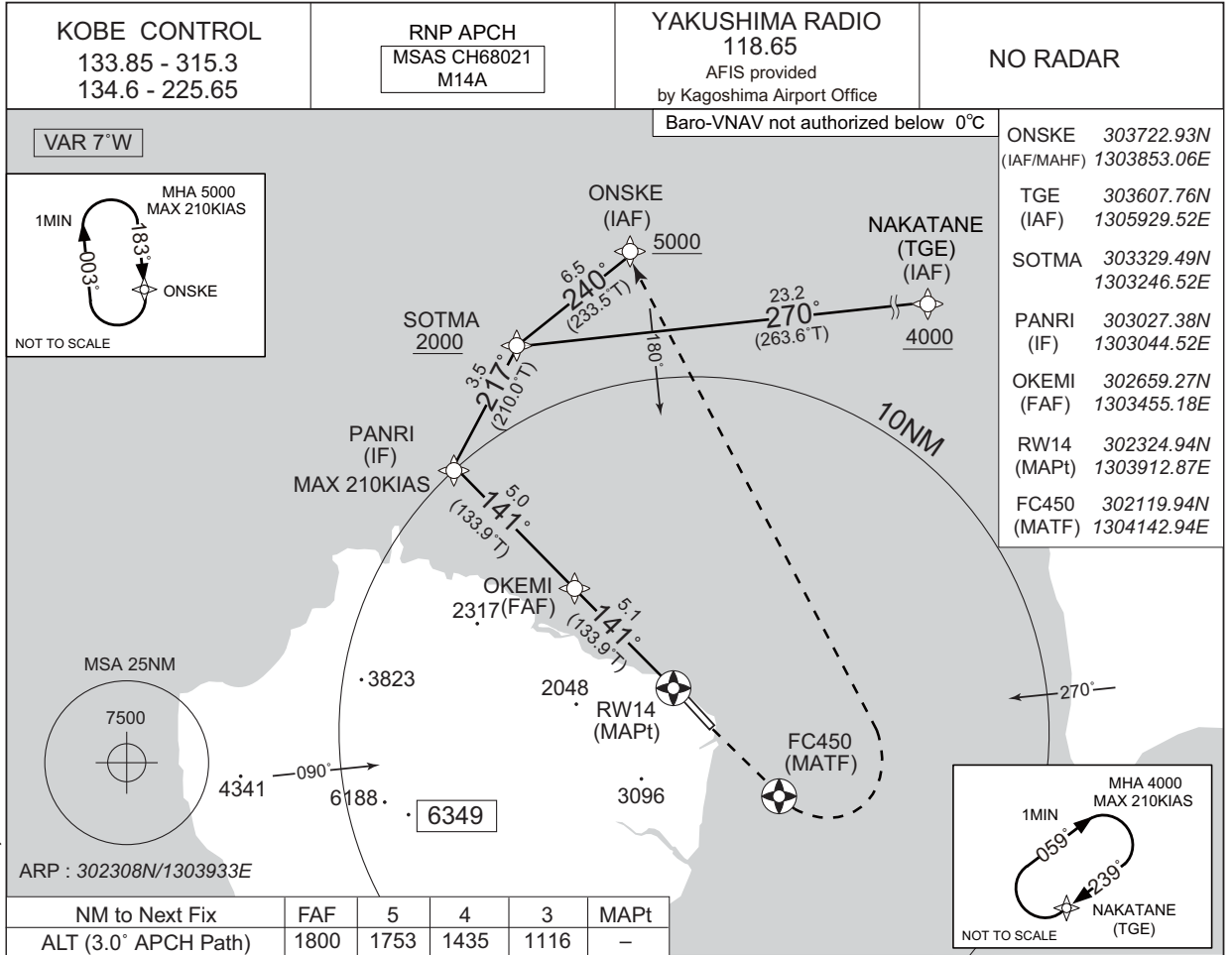
LTP/FTP orthometric height	37.0
----------------------------	------

CHANGE : New PROC.

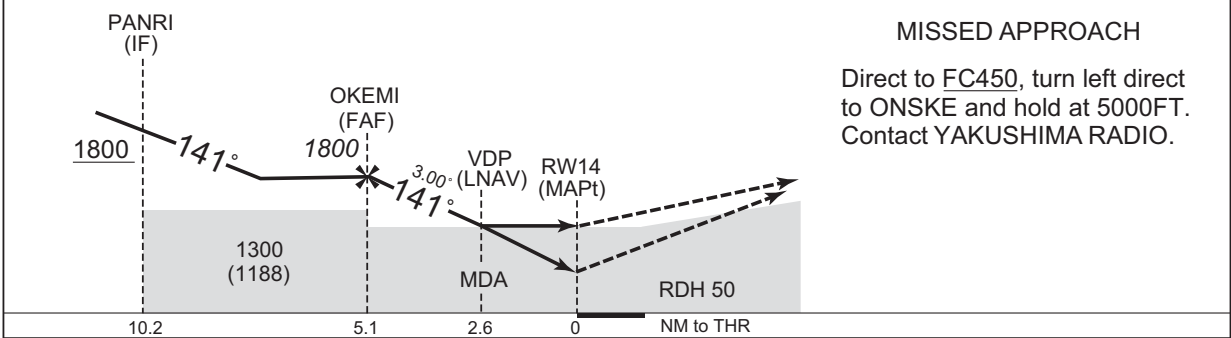
INSTRUMENT APPROACH CHART

RJFC / YAKUSHIMA

RNP RWY14



CHANGE : FREQ of KOBE CONTROL(127.15 → 134.6, 251.0 → 225.65).



Missed APCH climb gradient MNM 5.0%

MINIMA		THR elev. 112		AD elev. 122				
CAT	LPV		LNAV/VNAV		LNAV		CIRCLING	
	DA(H)	CMV	DA(H)	CMV	MDA(H)	CMV	MDA(H)	VIS
A	477 (365)	1500	930 (818)	1500	930 (818)	1500	930 (808)	1600
B	487 (375)							
C	497 (385)	1800		2000		2000		2400
D	-	-	-	-	-	-	-	-

MINIMA with Missed APCH climb gradient of 2.5% are not established.  
Circling to EAST side of RWY only.

INSTRUMENT APPROACH CHART

RJFC / YAKUSHIMA

RNP RWY14

**FAS DATA BLOCK**

Operation type	0	LTP/FTP ellipsoidal height	+00638
SBAS service provider identifier	2	FPAP latitude	302246.7970N
Airport identifier	RJFC	FPAP longitude	1303958.6910E
Runway	14	Threshold crossing height	00015.0
Approach performance designator	0	TCH units selector	1
Route indicator		Glide path angle	03.00
Reference path data selector	0	Course width at threshold	105.00
Reference path ID	M14A	∠ length offset	0192
LTP/FTP latitude	302324.9135N	HAL	40.0
LTP/FTP longitude	1303912.8885E	VAL	50.0
CRC remainder	A76A627B		

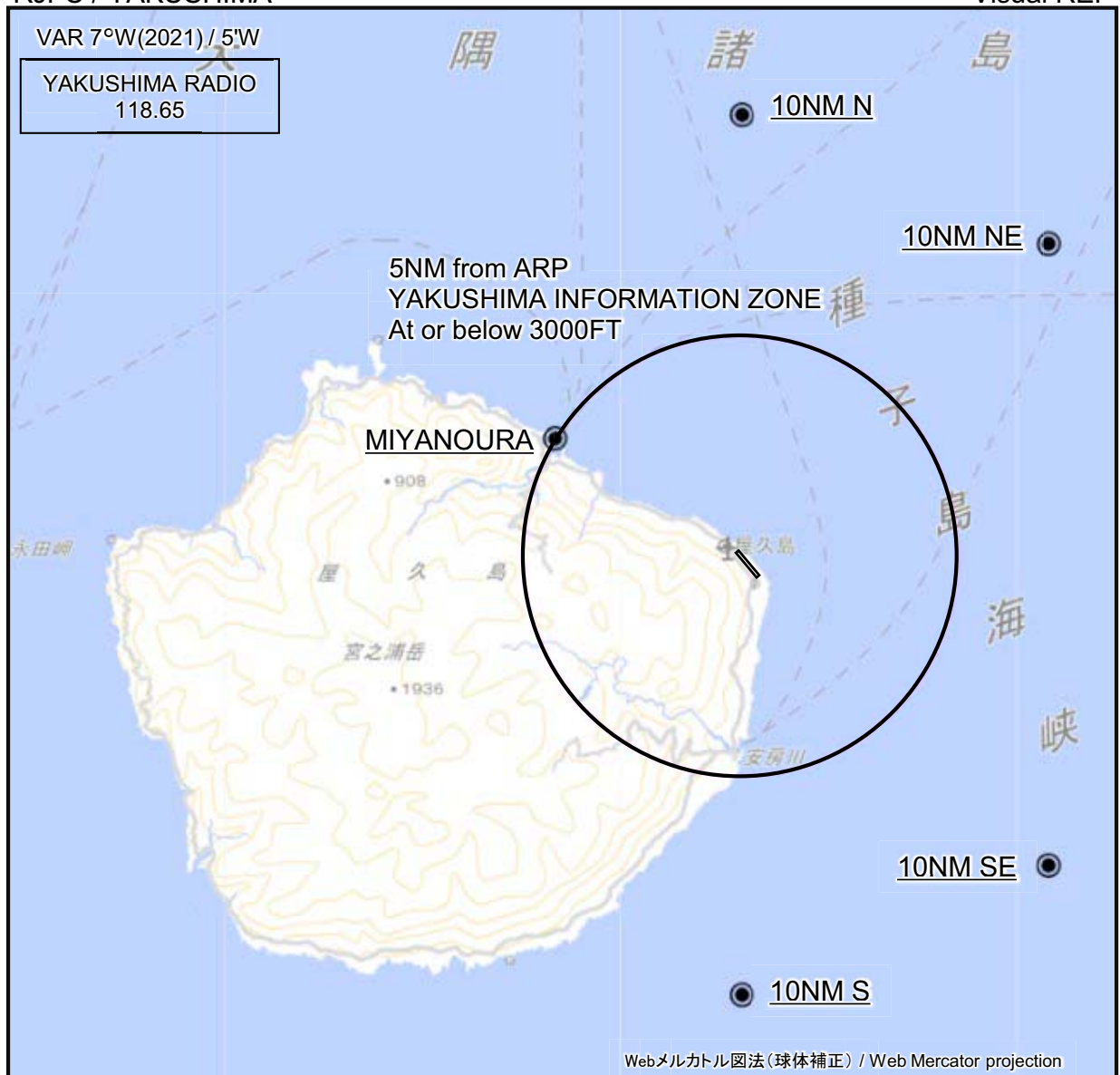
**Required additional data**

LTP/FTP orthometric height	33.2
----------------------------	------

CHANGE : FAS DATA BLOCK; Required additional data established.

RJFC / YAKUSHIMA

Visual REP



※図中に標高を示す数字がある場合、単位はメートル(m)である。The unit of measurement used to express elevation is meter(m).

NOTE : A/G COM from Kagoshima FSC is blinded between 180° and 300° from Yakushima VOR/DME (YKE).

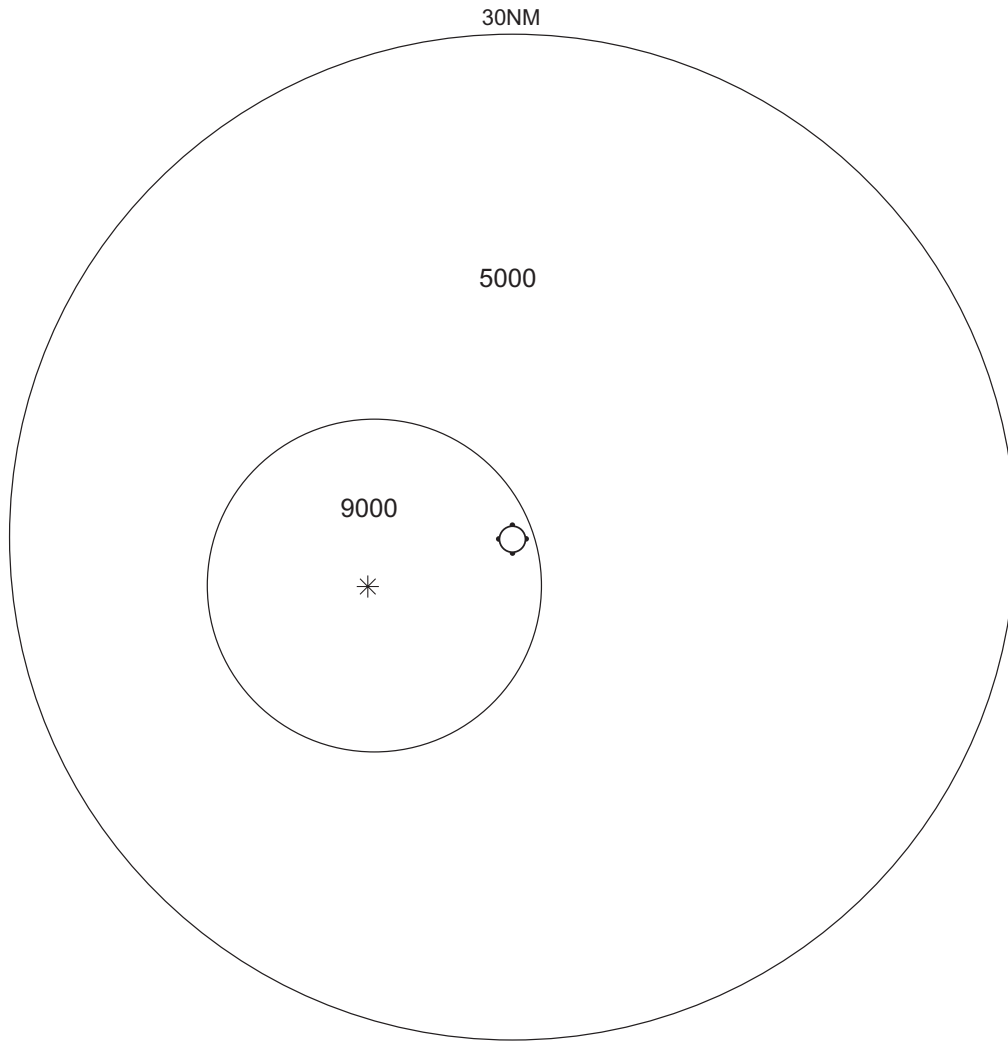
CHANGE : VAR.

Call sign	BRG / DIST from ARP	Remarks
10NM N	000°T / 10.0NM	海上 Over the sea
10NM NE	045°T / 10.0NM	海上 Over the sea
宮之浦 Miyanoura	302°T / 5.0NM	港 Harbor
10NM SE	135°T / 10.0NM	海上 Over the sea
10NM S	180°T / 10.0NM	海上 Over the sea

RJFC / YAKUSHIMA

Minimum Vectoring Altitude CHART

CHANGE : Minimum vectoring altitude(6000 → 5000).



CENTER : 302308N/1303933E (ARP)

\* : 302013N/1302957E RADIUS : 10NM