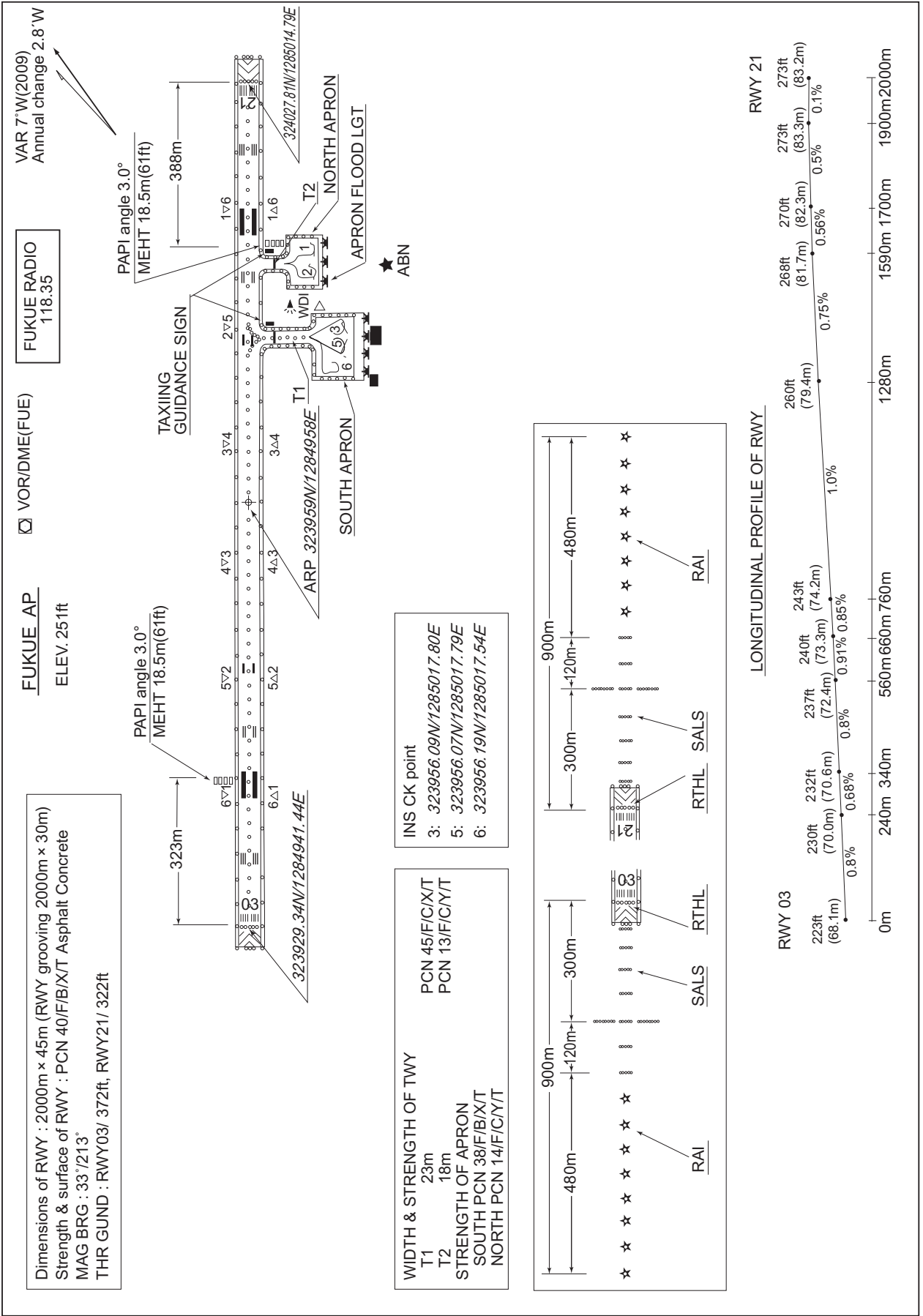


RJFE / FUKUE

AD CHART

CHANGE : Secondary FREQ abolished.



INTENTIONALLY LEFT BLANK

STANDARD DEPARTURE CHART - INSTRUMENT

RJFE / FUKUE

SID

NAGASAKI FOUR DEPARTURE

RWY 03 : Climb RWY HDG to 1300FT, turn right HDG127° ...
 RWY 21 : Climb RWY HDG to 1300FT, turn left HDG037° ...
 ...to intercept and proceed via FUE R082/OLE R263 to OLE VOR/DME.

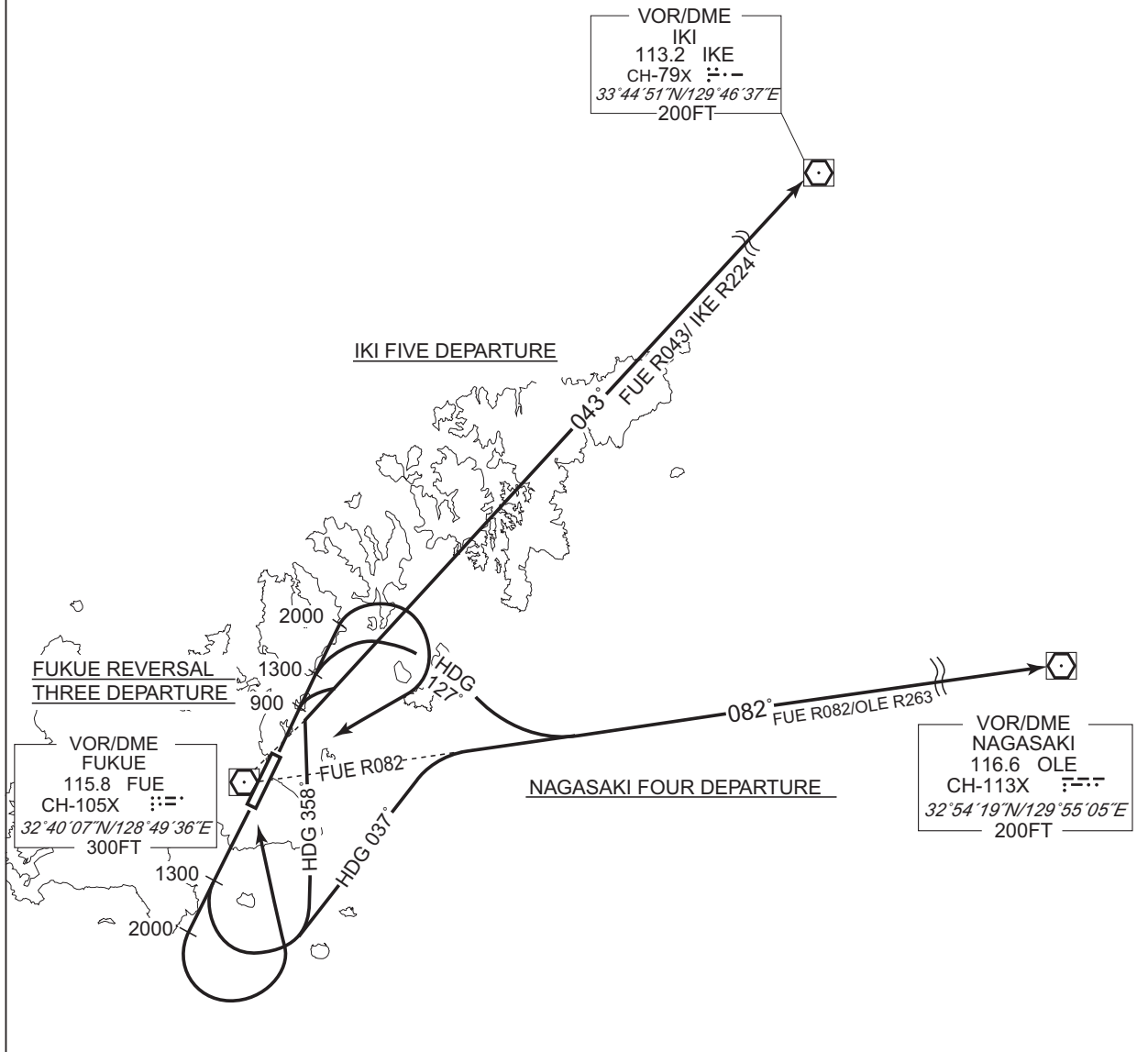
IKI FIVE DEPARTURE

RWY 03 : Climb RWY HDG to 900FT, turn right...
 RWY 21 : Climb RWY HDG to 1300FT, turn left HDG358° ...
 ...to intercept and proceed via FUE R043/IKE R224 to IKE VOR/DME

FUKUE REVERSAL THREE DEPARTURE

RWY 03 : Climb RWY HDG to 2000FT, turn right...
 RWY 21 : Climb RWY HDG to 2000FT, turn left...
 ...direct to FUE VOR/DME.

CHANGE : PROC renamed. Course FM FUE to IKE.



STANDARD DEPARTURE CHART - INSTRUMENT

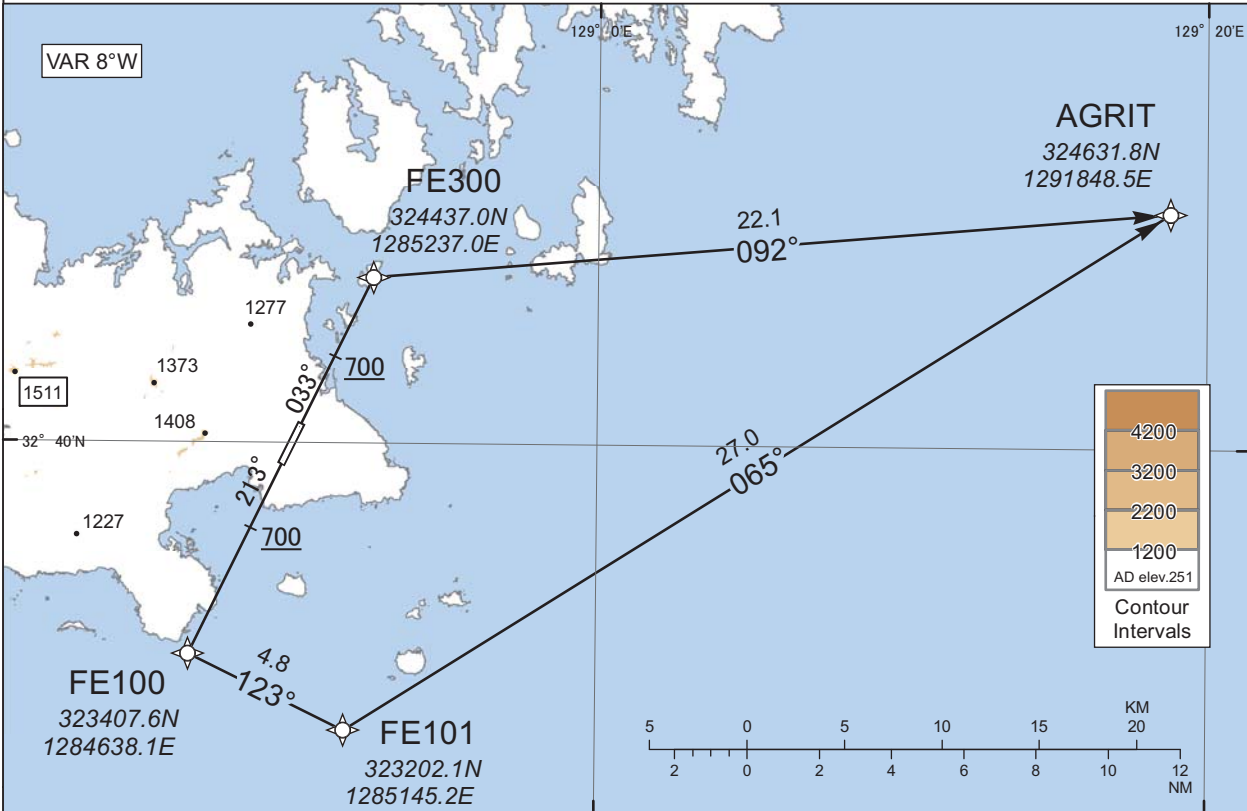
RJFE / FUKUE

RNAV SID

AGRIT ONE DEPARTURE

RNP1

Note GNSS required.



RWY03 : Climb on HDG033° at or above 700FT, direct to FE300, to AGRIT.

RWY21 : Climb on HDG213° at or above 700FT, direct to FE100, to FE101, to AGRIT.

RWY03

Serial Number	Path Descriptor	Waypoint Identifier	Fly Over	Course °M(°T)	Magnetic Variation	Distance (NM)	Turn Direction	Altitude (FT)	Speed (KIAS)	Vertical Angle	Navigation Specification
001	VA	-	-	033 (025.6)	-7.5	-	-	+700	-	-	RNP1
002	DF	FE300	-	-	-7.5	-	-	-	-	-	RNP1
003	TF	AGRIT	-	092 (084.9)	-7.5	22.1	-	-	-	-	RNP1

RWY21

Serial Number	Path Descriptor	Waypoint Identifier	Fly Over	Course °M(°T)	Magnetic Variation	Distance (NM)	Turn Direction	Altitude (FT)	Speed (KIAS)	Vertical Angle	Navigation Specification
001	VA	-	-	213 (205.7)	-7.5	-	-	+700	-	-	RNP1
002	DF	FE100	-	-	-7.5	-	-	-	-	-	RNP1
003	TF	FE101	-	123 (115.8)	-7.5	4.8	-	-	-	-	RNP1
004	TF	AGRIT	-	065 (057.4)	-7.5	27.0	-	-	-	-	RNP1

CHANGE : Navigation Specification(Basic RNP1 → RNP1).

STANDARD DEPARTURE CHART - INSTRUMENT

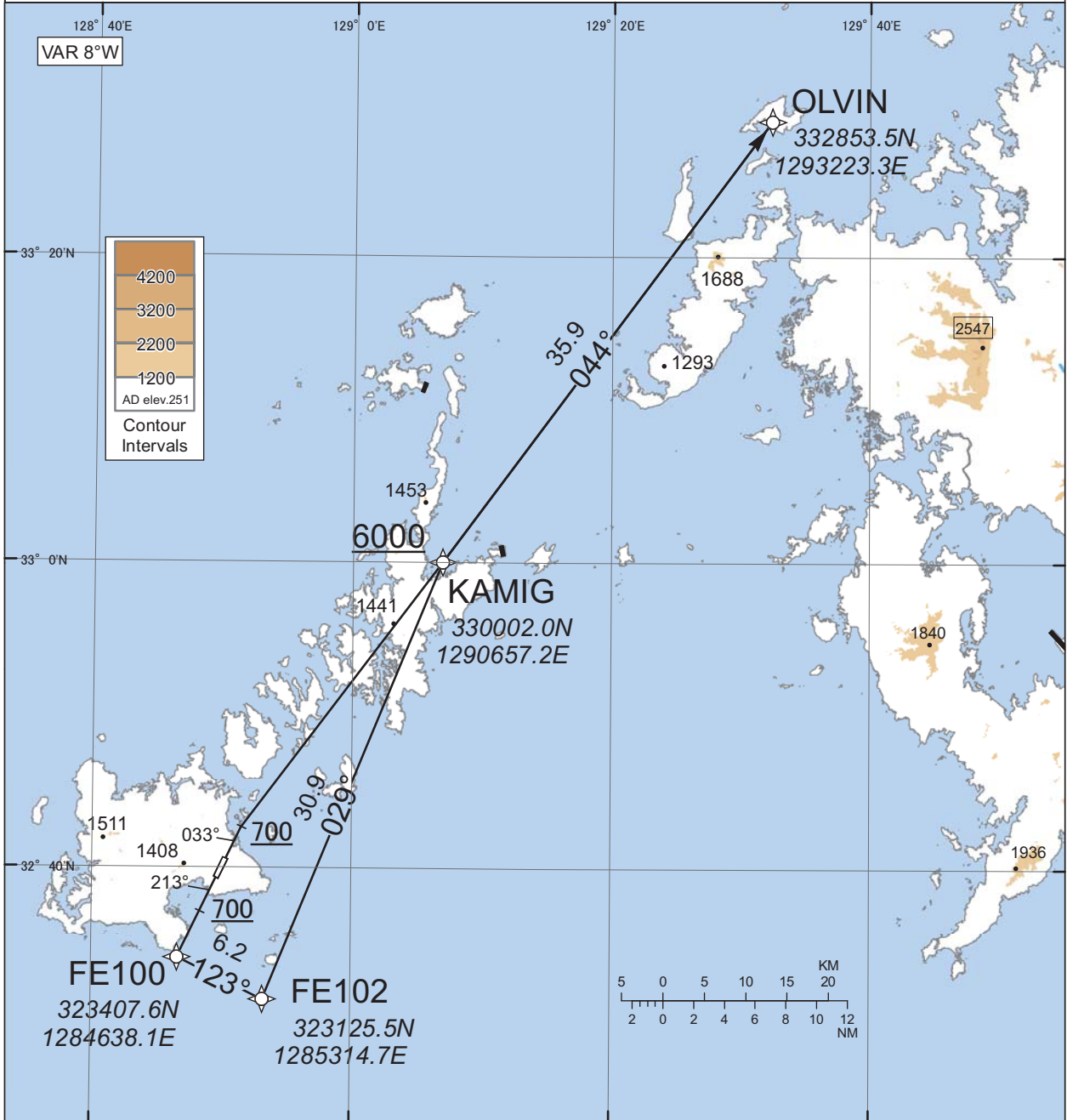
RJFE / FUKUE

RNAV SID

OLVIN ONE DEPARTURE

RNP1

Note GNSS required.



CHANGE : Navigation Specification(Basic RNP1→RNP1).

RWY03 : Climb on HDG033° at or above 700FT, direct to KAMIG at or above 6000FT, to OLVIN.
RWY21 : Climb on HDG213° at or above 700FT, direct to FE100, to FE102, to KAMIG at or above 6000FT, to OLVIN.

STANDARD DEPARTURE CHART - INSTRUMENT

RJFE / FUKUE

RNAV SID

OLVIN ONE DEPARTURE

RWY03

Serial Number	Path Descriptor	Waypoint Identifier	Fly Over	Course °M(°T)	Magnetic Variation	Distance (NM)	Turn Direction	Altitude (FT)	Speed (KIAS)	Vertical Angle	Navigation Specification
001	VA	-	-	033 (025.6)	-7.5	-	-	+700	-	-	RNP1
002	DF	KAMIG	-	-	-7.5	-	-	+6000	-	-	RNP1
003	TF	OLVIN	-	044 (036.3)	-7.5	35.9	-	-	-	-	RNP1

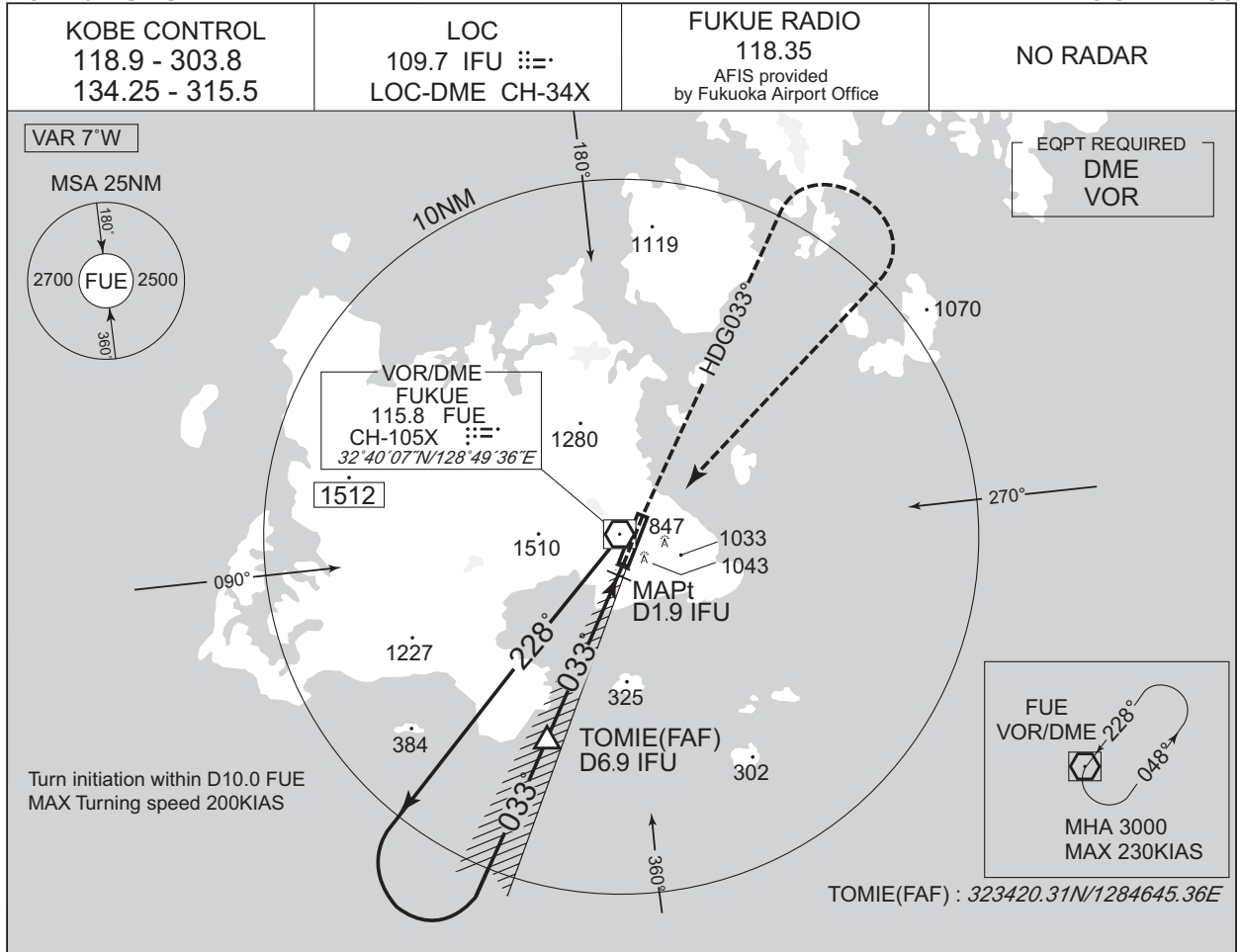
RWY21

Serial Number	Path Descriptor	Waypoint Identifier	Fly Over	Course °M(°T)	Magnetic Variation	Distance (NM)	Turn Direction	Altitude (FT)	Speed (KIAS)	Vertical Angle	Navigation Specification
001	VA	-	-	213 (205.7)	-7.5	-	-	+700	-	-	RNP1
002	DF	FE100	-	-	-7.5	-	-	-	-	-	RNP1
003	TF	FE102	-	123 (115.8)	-7.5	6.2	-	-	-	-	RNP1
004	TF	KAMIG	-	029 (021.9)	-7.5	30.9	-	+6000	-	-	RNP1
005	TF	OLVIN	-	044 (036.3)	-7.5	35.9	-	-	-	-	RNP1

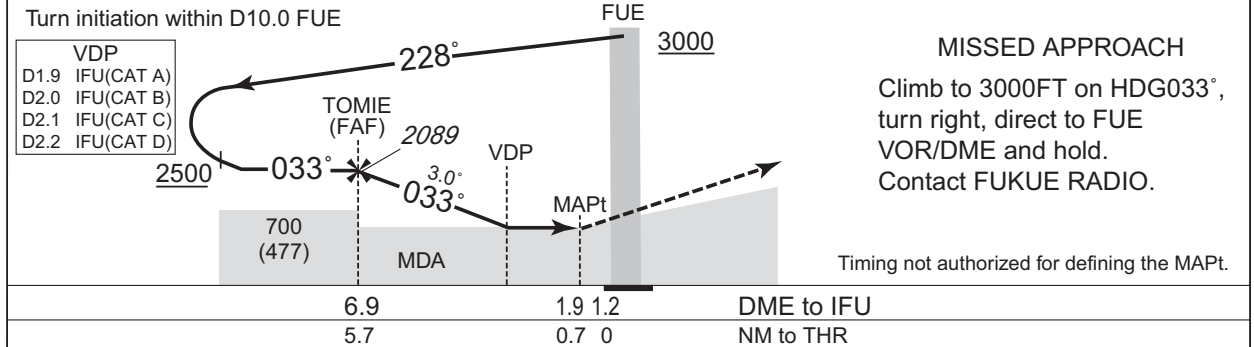
CHANGE : Navigation Specification(Basic RNP1 → RNP1).

INSTRUMENT APPROACH CHART

RJFE / FUKUE LOC RWY03



NM to IFU	FAF	6	5	4	3	MAPt
ALT(3.0° APCH Path)	2089	1798	1479	1161	842	-



	6.9	1.9	1.2	DME to IFU
	5.7	0.7	0	NM to THR

CHANGE : Description of VAR.

Missed APCH climb gradient MNM 3.0%

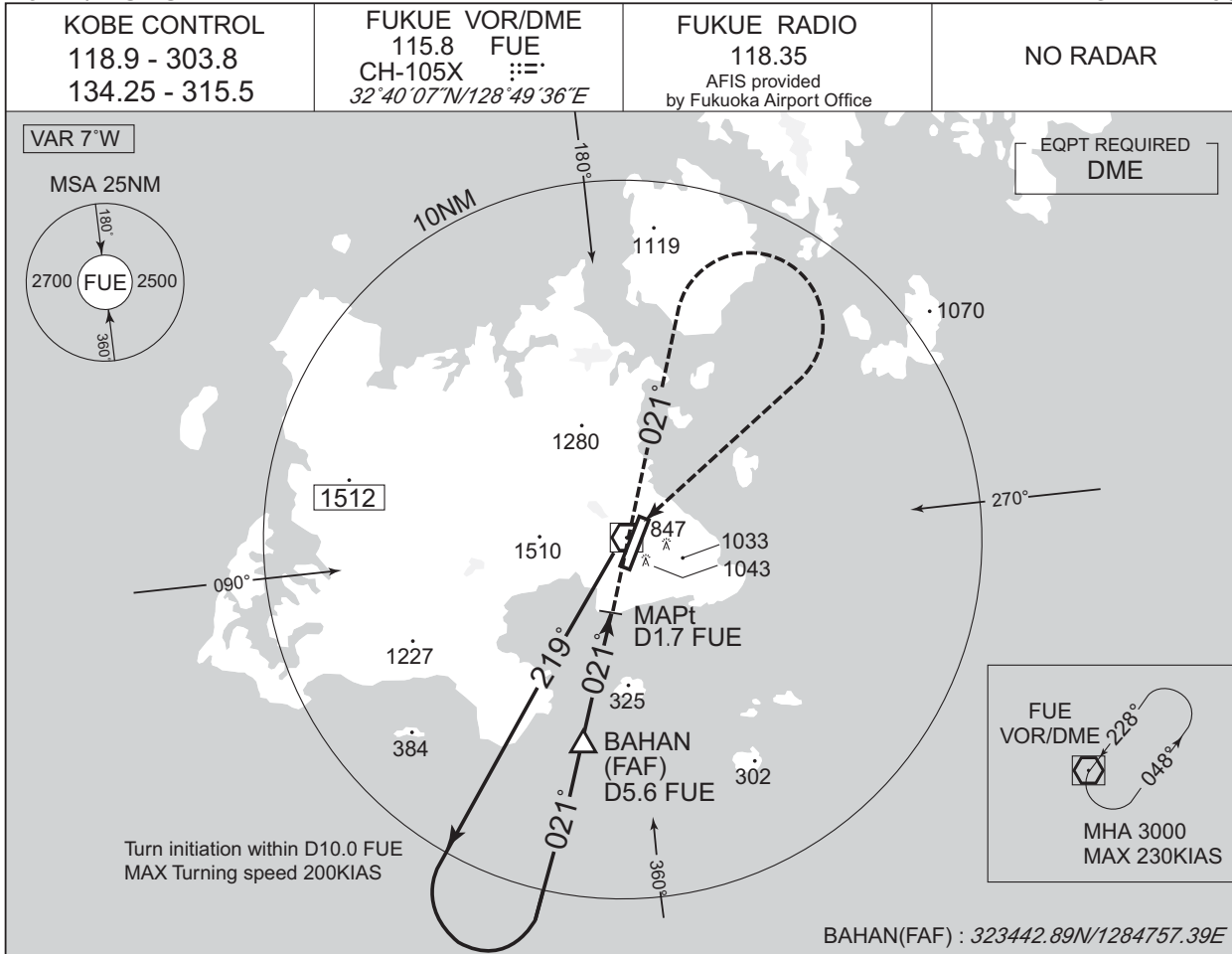
MINIMA	THR elev. 223	AD elev. 251		
CAT	CIRCLING			
	MDA(H)	CMV	MDA(H)	VIS
A	500 (277)	800	700 (449)	1600
B	530 (307)	1000	710 (459)	
C	560 (337)		1280 (1029)	2400
D	580 (357)	1400	1810 (1559)	3200

Circling to WEST side of RWY only.
MINIMA with Missed APCH climb gradient of 2.5% are not established.

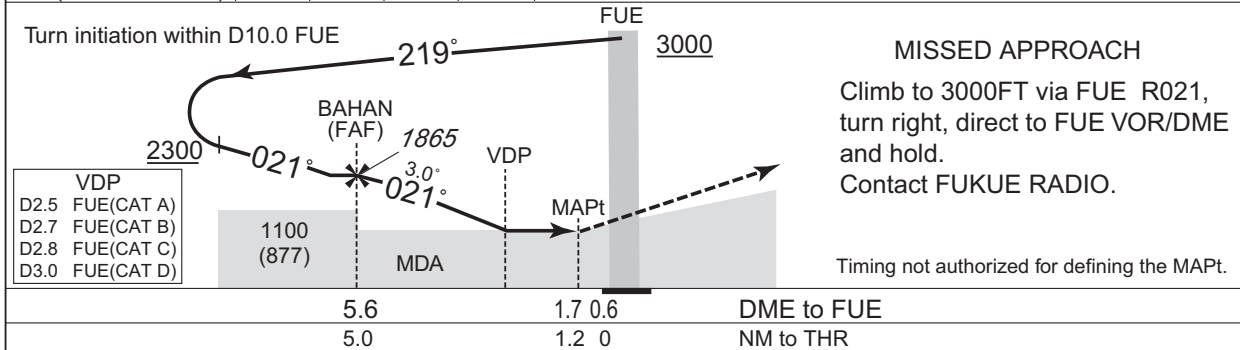
INSTRUMENT APPROACH CHART

RJFE / FUKUE

VOR RWY03



NM to FUE	FAF	5	4	MAPt
ALT(3.0° APCH Path)	1865	1366	1048	-



5.6	1.7	0.6	DME to FUE
5.0	1.2	0	NM to THR

CHANGE : Description of VAR.

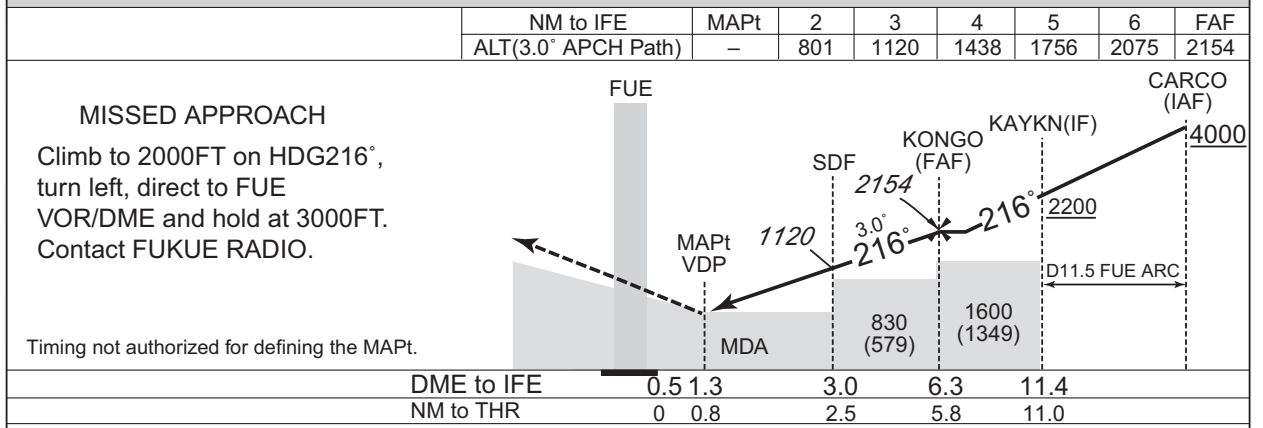
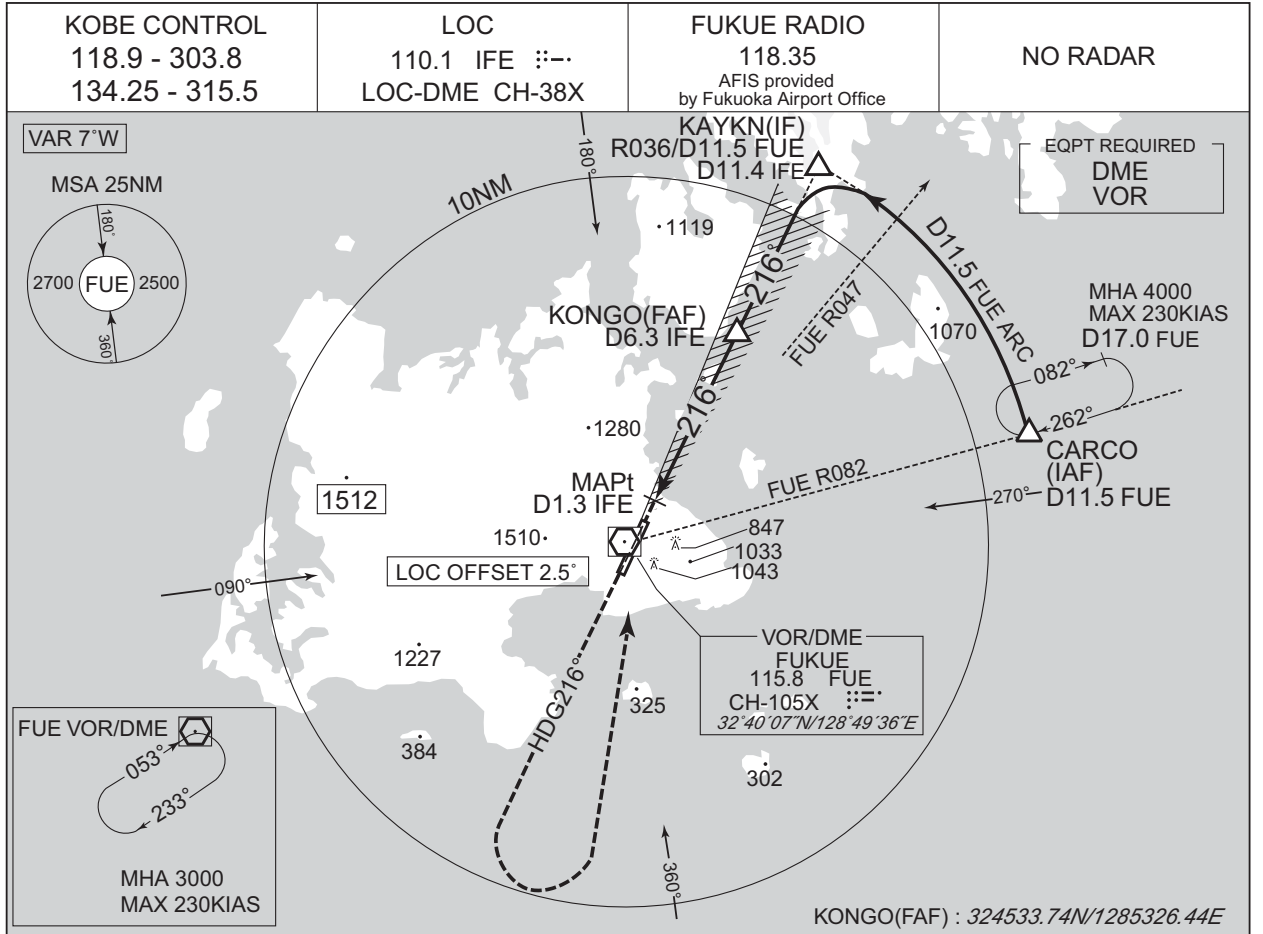
Missed APCH climb gradient MNM 5.0%

MINIMA		THR elev. 223	AD elev. 251
CAT	CIRCLING		
	MDA(H)	CMV	MDA(H) VIS
	A 880 (657)	1200	880 (629) 1600
	B 920 (697)	1400	920 (669)
C 970 (747)	1280 (1029) 2400		
D 1010 (787)	1800	1810 (1559) 3200	

Circling to WEST side of RWY only.
MINIMA with Missed APCH climb gradient of 2.5% are not established.

INSTRUMENT APPROACH CHART

RJFE / FUKUE LOC Z RWY21



CHANGE : Description of VAR.

Missed APCH climb gradient MNM 3.0%

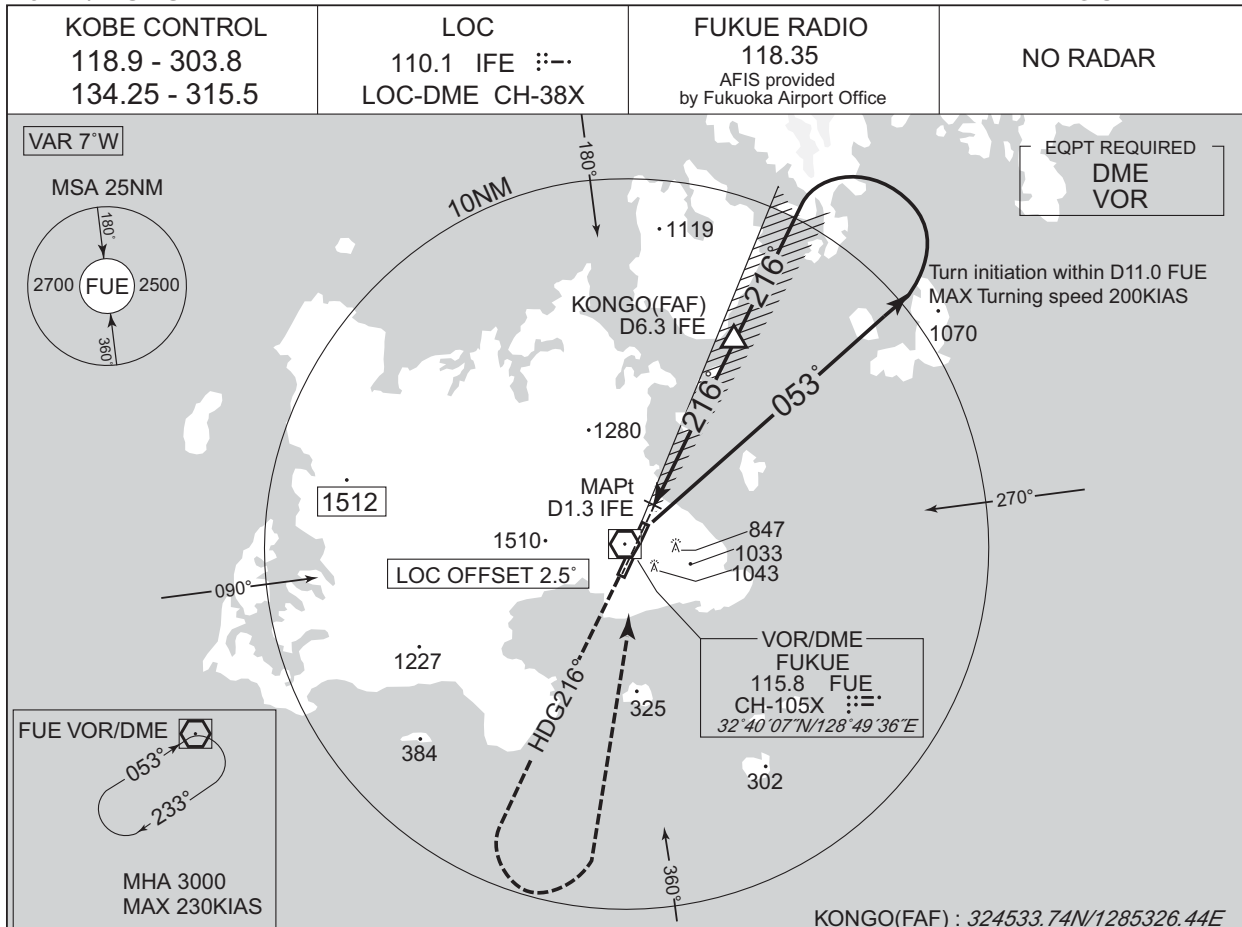
MINIMA		THR elev. 273	AD elev. 251	
CAT	CIRCLING			
	MDA(H)	CMV	MDA(H) VIS	
A	570 (319)	900	700 (449) 1600	
B		1000	710 (459)	
C			1280 (1029)	2400
D			1810 (1559)	3200

Circling to WEST side of RWY only.
MINIMA with Missed APCH climb gradient of 2.5% are not established.

INSTRUMENT APPROACH CHART

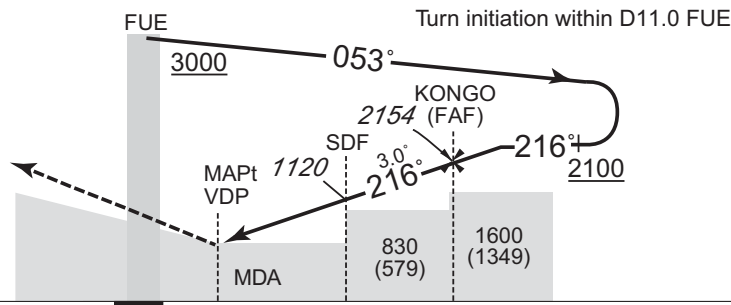
RJFE / FUKUE

LOC Y RWY21



	NM to IFE	MAPt	2	3	4	5	6	FAF
	ALT(3.0° APCH Path)	-	801	1120	1438	1756	2075	2154

MISSED APPROACH
Climb to 2000FT on HDG216°, turn left, direct to FUE VOR/DME and hold at 3000FT.
Contact FUKUE RADIO.



	DME to IFE	0.5	1.3	3.0	6.3
	NM to THR	0	0.8	2.5	5.8

CHANGE : Description of VAR.

Missed APCH climb gradient MNM 3.0%

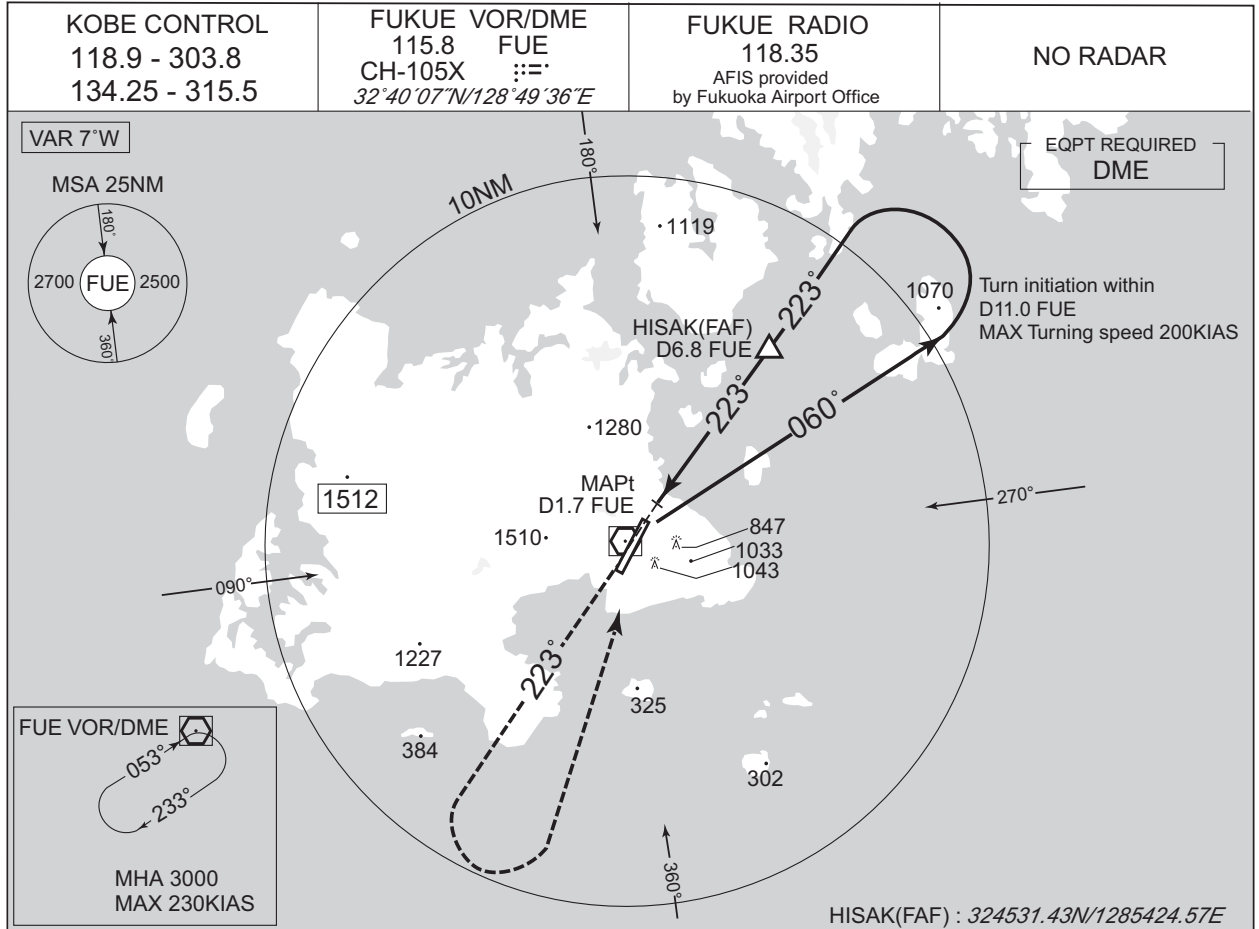
MINIMA		THR elev. 273	AD elev. 251
CAT	CIRCLING		
	MDA(H)	CMV	MDA(H) VIS
A	570 (319)	900	700 (449) 1600
B		1000	710 (459)
C			1280 (1029) 2400
D		1400	1810 (1559) 3200

Circling to WEST side of RWY only.
MINIMA with Missed APCH climb gradient of 2.5% are not established.

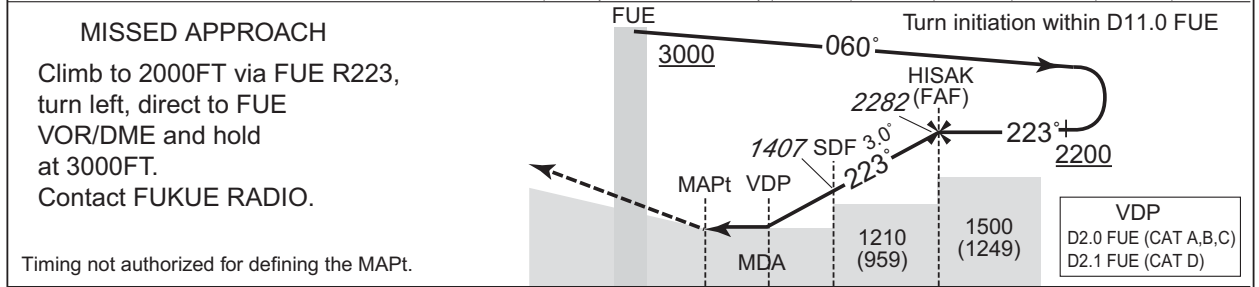
INSTRUMENT APPROACH CHART

RJFE / FUKUE

VOR RWY21



NM to FUE	MAPt	3	4	5	6	FAF
ALT(3.0° APCH Path)	-	1089	1407	1725	2044	2282



DME to FUE	0.6	1.7	4.0	6.8
NM to THR	0	1.2	3.5	6.2

Missed APCH climb gradient MNM 3.0%

CAT	THR elev. 273		AD elev. 251	
	MDA(H)	CMV	MDA(H)	VIS
A	780 (529)	1000	780 (529)	1600
B		1200		
C	790 (539)	1600	1280 (1029)	2400
D	810 (559)		1810 (1559)	3200

Circling to WEST side of RWY only.
MINIMA with Missed APCH climb gradient of 2.5% are not established.

CHANGE : Description of VAR.

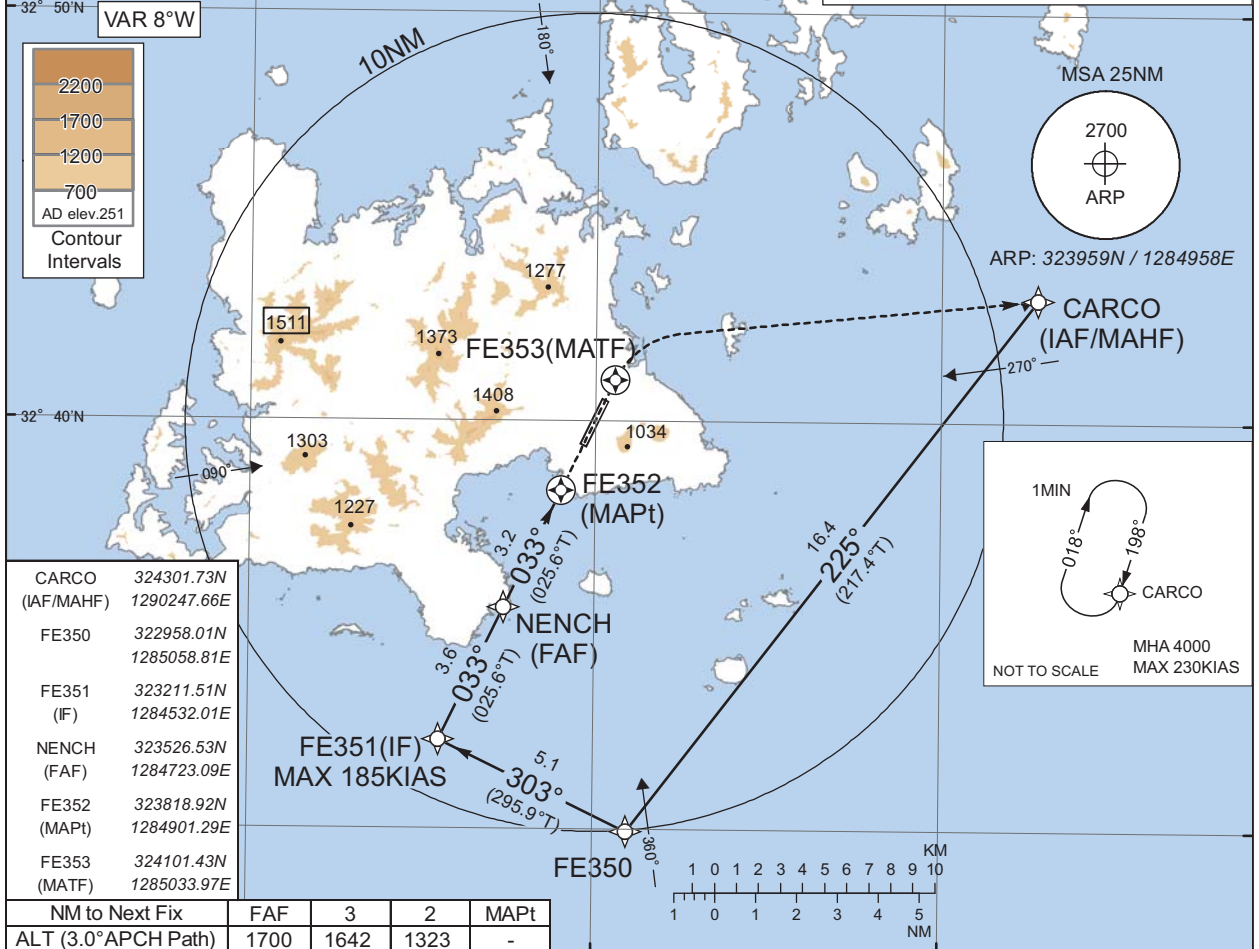
INSTRUMENT APPROACH CHART

RJFE / FUKUE

RNP RWY03

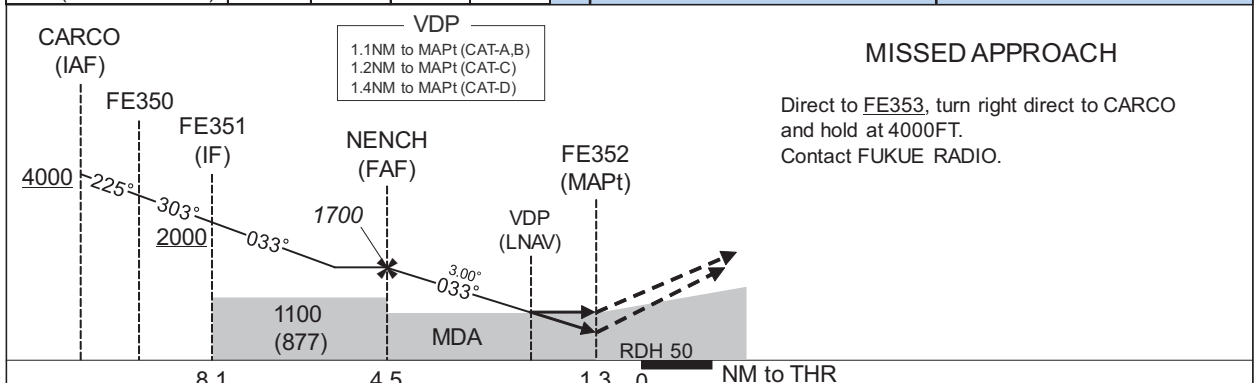
KOBE CONTROL 118.9 - 303.8 134.25 - 315.5	RNP APCH MSAS CH88033 M03A	FUKUE RADIO 118.35 AFIS provided by Fukuoka Airport Office	NO RADAR
--	---	--	-----------------

Baro-VNAV not authorized below -5°C



CARCO (IAF/MAHF)	324301.73N	1290247.66E
FE350	322958.01N	1285058.81E
FE351 (IF)	323211.51N	1284532.01E
NENCH (FAF)	323526.53N	1284723.09E
FE352 (MAPt)	323818.92N	1284901.29E
FE353 (MATF)	324101.43N	1285033.97E

NM to Next Fix	FAF	3	2	MAPt
ALT (3.0° APCH Path)	1700	1642	1323	-



MISSED APPROACH
 Direct to FE353, turn right direct to CARCO and hold at 4000FT.
 Contact FUKUE RADIO.

Missed APCH climb gradient MNM 5.0%

MINIMA		THR elev. 223		AD elev. 251					
CAT	LPV		LNAV/VNAV		LNAV		CIRCLING		
	DA(H)	CMV	DA(H)	CMV	MDA(H)	CMV	MDA(H)	VIS	
A	611(388)	900	1010(787)	1200	1010(787)	1200	1010(759)	1600	
B	621(398)	1000	1050(827)	1400	1050(827)	1400	1280(1029)	2400	
C	631(408)	1400	1090(867)	1800	1090(867)	1800	1810(1559)	3200	
D	641(418)	1400	1090(867)	1800	1090(867)	1800	1810(1559)	3200	

Circling to WEST side of RWY only.
 MINIMA with Missed APCH climb gradient of 2.5% are not established.

CHANGE : Missed APCH for using VOR/DME abolished. HLDG pattern for using NAVAID abolished.

INSTRUMENT APPROACH CHART

RJFE / FUKUE

RNP RWY03

FAS DATA BLOCK

Operation type	0	LTP/FTP ellipsoidal height	+00987
SBAS service provider identifier	2	FPAP latitude	324027.7825N
Airport identifier	RJFE	FPAP longitude	1285014.8040E
Runway	03	Threshold crossing height	00015.0
Approach performance designator	0	TCH units selector	1
Route indicator		Glide path angle	03.00
Reference path data selector	0	Course width at threshold	105.00
Reference path ID	M03A	∠ length offset	0000
LTP/FTP latitude	323929.3105N	HAL	40.0
LTP/FTP longitude	1284941.4435E	VAL	50.0
CRC remainder	E0818BF5		

Required additional data

LTP/FTP orthometric height	67.7
----------------------------	------

CHANGE : Description of FAS DATA BLOCK ITEM(CRC remainder).

INSTRUMENT APPROACH CHART

RJFE / FUKUE

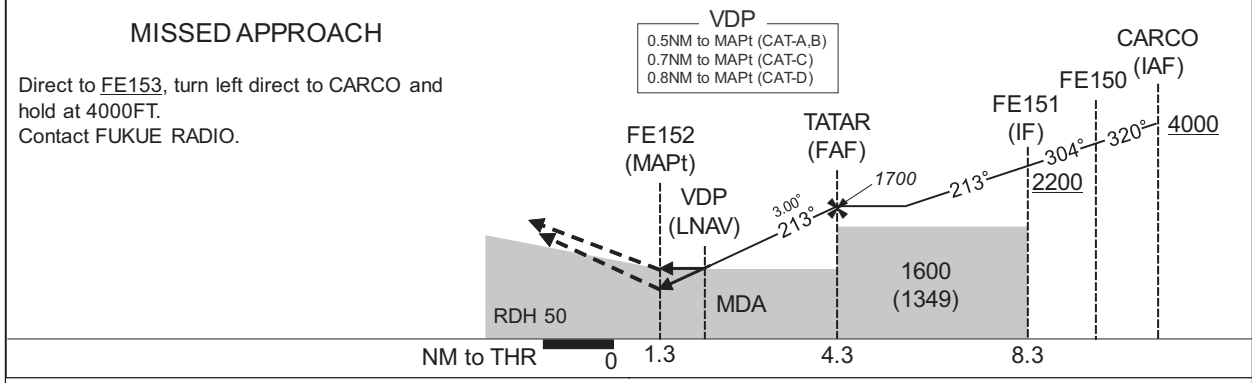
RNP RWY21

KOBE CONTROL 118.9 - 303.8 134.25 - 315.5	RNP APCH MSAS CH85668 M21A	FUKUE RADIO 118.35 AFIS provided by Fukuoka Airport Office	NO RADAR
---	----------------------------------	---	----------



CARCO (IAF/MAHF)	324301.73N 1290247.66E
FE150	324627.07N 1285816.73E
FE151 (IF)	324758.74N 1285432.45E
TATAR (FAF)	324422.07N 1285228.54E
FE152 (MAPt)	324138.23N 1285054.97E
FE153 (MATF)	323855.49N 1284922.14E

NM to Next Fix	MAPt	1	2	3	FAF
ALT (3.0°APCH Path)	-	1055	1373	1691	1700



MISSED APPROACH

Direct to FE153, turn left direct to CARCO and hold at 4000FT.
Contact FUKUE RADIO.

VDP
0.5NM to MAPt (CAT-A,B)
0.7NM to MAPt (CAT-C)
0.8NM to MAPt (CAT-D)

CAT	LPV		LNAV/VNAV		LNAV		CIRCLING	
	DA(H)	CMV	DA(H)	CMV	MDA(H)	CMV	MDA(H)	VIS
A	721(448)	900	880(607)	1000	880(629)	1000	880(629)	1600
B	731(458)	1200	930(657)	1400	930(679)	1400	1280(1029)	2400
C	741(468)	1600	970(697)	1800	970(719)	1800	1810(1559)	3200
D	751(478)	1600	970(697)	1800	970(719)	1800	1810(1559)	3200

Missed APCH climb gradient MNM 5.0%

MINIMA with Missed APCH climb gradient of 2.5% are not established.

Circling to WEST side of RWY only.

CHANGE : Missed APCH for using VOR/DME abolished. HLDG pattern for using NAVAID abolished.

INSTRUMENT APPROACH CHART

RJFE / FUKUE

RNP RWY21

FAS DATA BLOCK

Operation type	0	LTP/FTP ellipsoidal height	+01140
SBAS service provider identifier	2	FPAP latitude	323929.3105N
Airport identifier	RJFE	FPAP longitude	1284941.4435E
Runway	21	Threshold crossing height	00015.0
Approach performance designator	0	TCH units selector	1
Route indicator		Glide path angle	03.00
Reference path data selector	0	Course width at threshold	105.00
Reference path ID	M21A	∠ length offset	0000
LTP/FTP latitude	324027.7825N	HAL	40.0
LTP/FTP longitude	1285014.8040E	VAL	50.0
CRC remainder	7B7068FB		

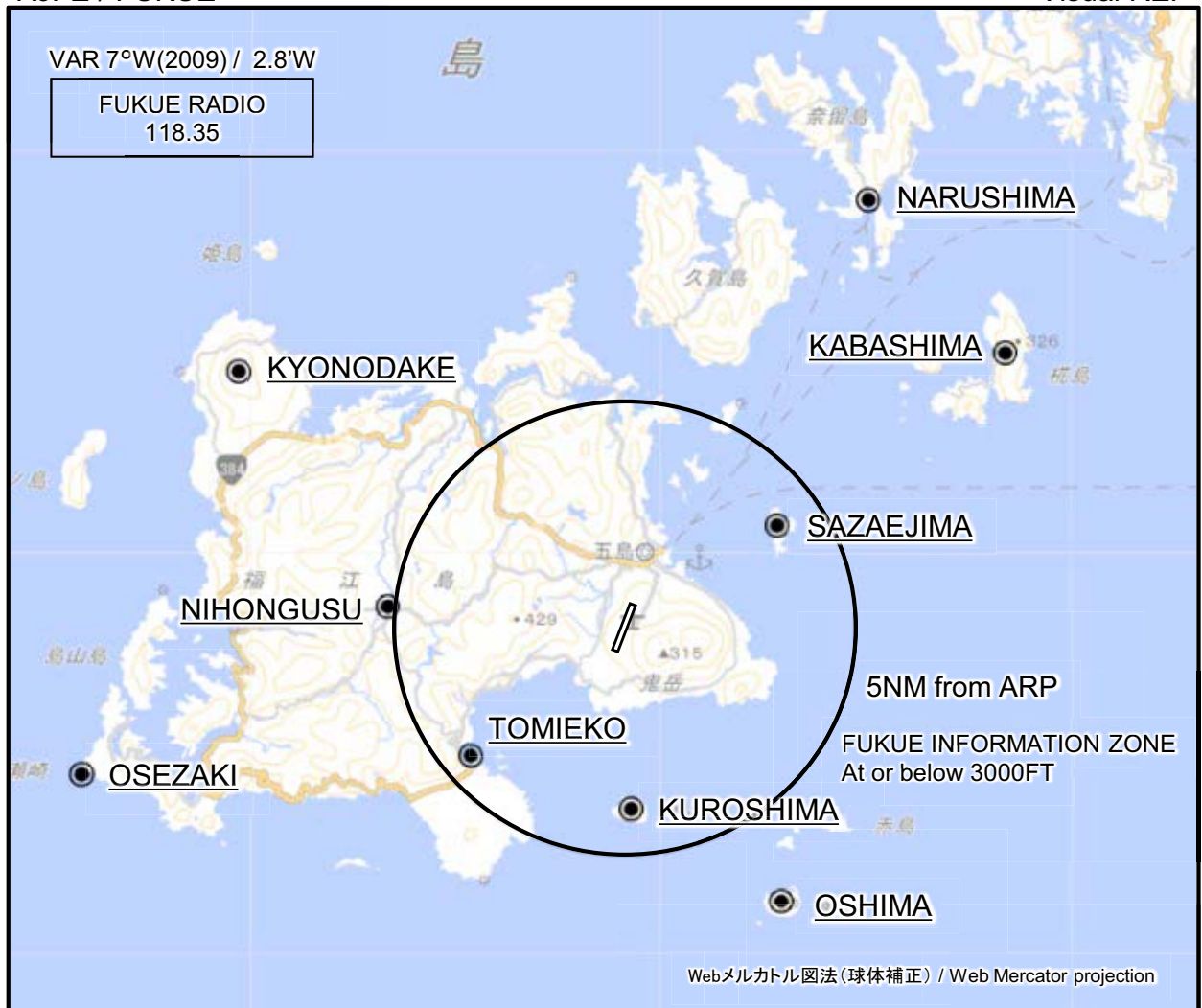
Required additional data

LTP/FTP orthometric height	82.9
----------------------------	------

CHANGE : Description of FAS DATA BLOCK ITEM(CRC remainder).

RJFE / FUKUE

Visual REP

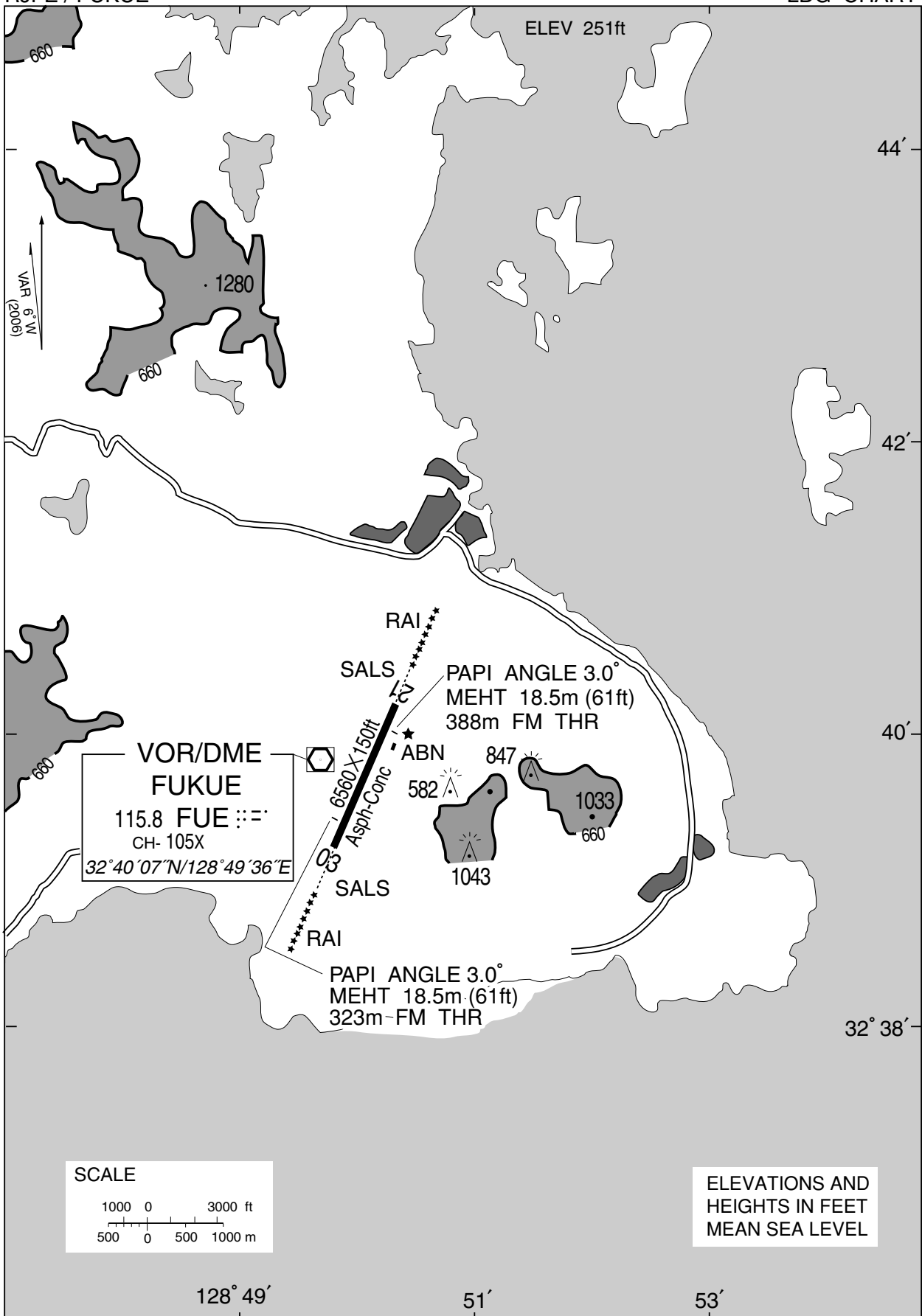


※図中に標高を示す数字がある場合、単位はメートル(m)である。The unit of measurement used to express elevation is meter(m).

CHANGE : Secondary FREQ abolished.

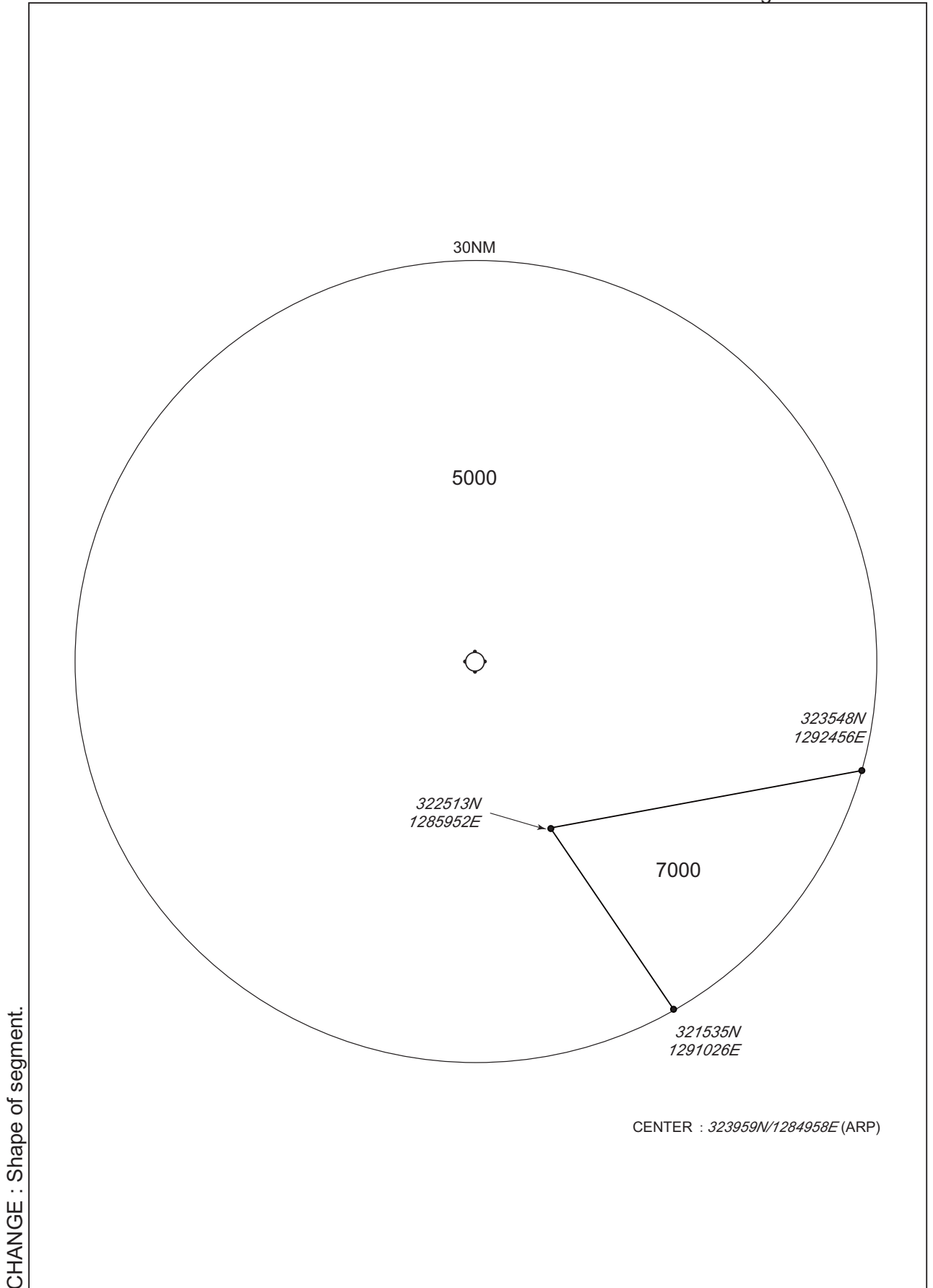
Call sign	BRG / DIST from ARP	Remarks
奈留島 Narushima	029°T / 10.8NM	浦港 Harbor
栴島 Kabashima	053°T / 10.2NM	島 Island
京ノ岳 Kyonodake	304°T / 10.1NM	レーダーサイト Radar site
蝶螺島 Sazaejima	055°T / 4.0NM	島 Island
二本楠 Nihongusu	275°T / 5.2NM	十字路 Intersection
富江港 Tomieko	230°T / 4.4NM	港 Harbor
大瀬崎 Osezaki	255°T / 12.2NM	灯台 Lighthouse
黒島 Kuroshima	179°T / 4.0NM	島 Island
黄島 Oshima	151°T / 6.9NM	島 Island

RJFE / FUKUE LDG CHART



RJFE / FUKUE

Minimum Vectoring Altitude CHART



INTENTIONALLY LEFT BLANK