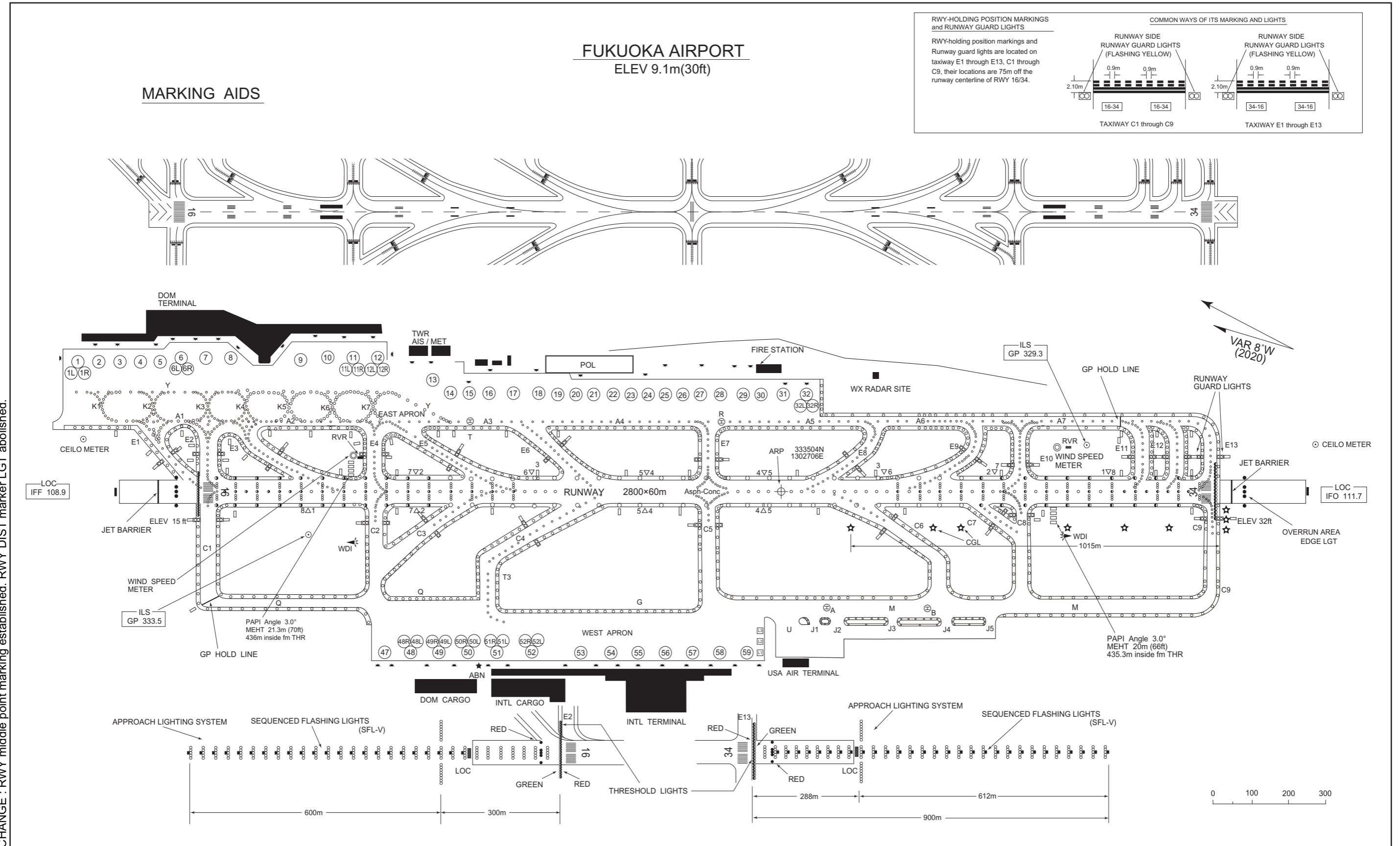


AERODROME CHART



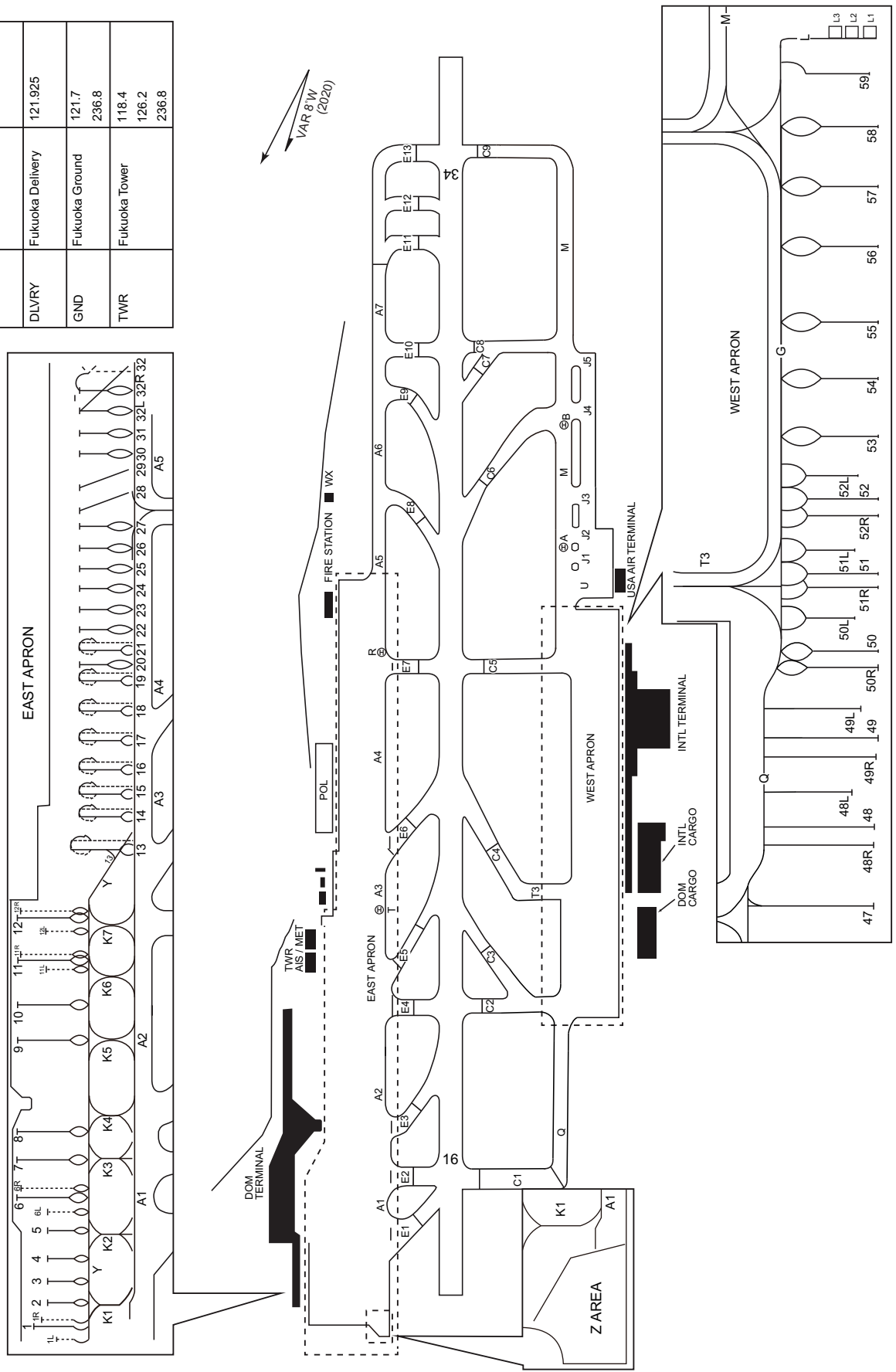
CHANGE : RWY middle point marking established. RWY DIST marker LGT abolished.

CHANGE : WX observation facility relocated.

**FUKUOKA AP**

ELEV 9.1m(30ft)ARP

Designation	Call Sign	Frequency(MHz)
ATIS	Fukuoka Airport	127.2
DLVRY	Fukuoka Delivery	121.925
GND	Fukuoka Ground	121.7
TWR	Fukuoka Tower	118.4
		126.2
		236.8



T3,G,L,M,Q : Aircraft stand taxi lane

**INTENTIONALLY LEFT BLANK**

# AERODROME OBSTACLE CHART-ICAO

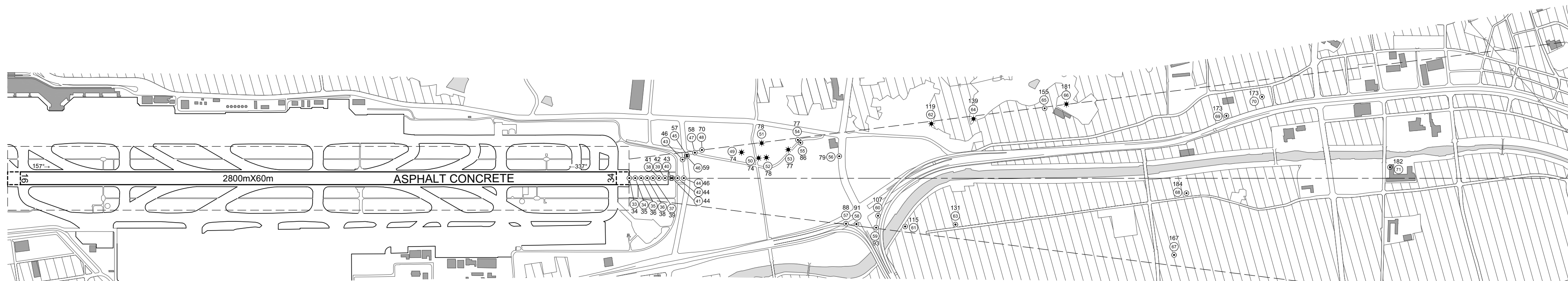
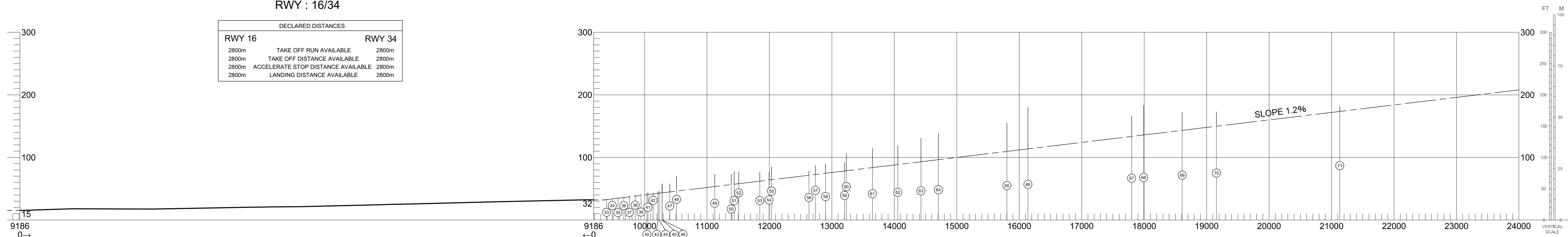
TYPE A (OPERATING LIMITATIONS)

DIMENSIONS AND ELEVATIONS IN FEET BEARINGS ARE MAGNETIC

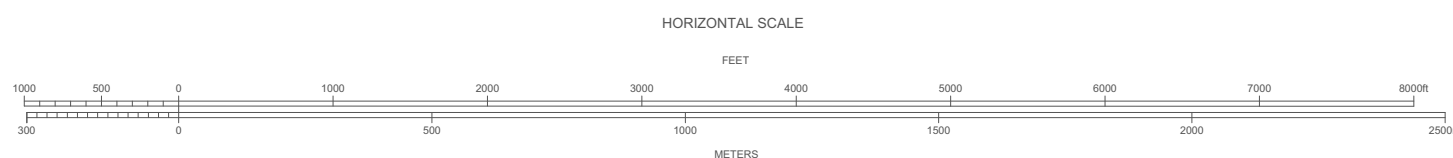
MAGNETIC VARIATION 8° W-MAR 2020

FUKUOKA AIRPORT  
RWY : 16/34

DECLARED DISTANCES			
RWY 16		RWY 34	
2800m	TAKE OFF RUN AVAILABLE	2800m	
2800m	TAKE OFF DISTANCE AVAILABLE	2800m	
2800m	ACCELERATE STOP DISTANCE AVAILABLE	2800m	
2800m	LANDING DISTANCE AVAILABLE	2800m	



LEGEND		AMENDMENT RECORD		
		Nr	DATE	ENTERED BY
①	IDENTIFICATION NUMBER			
⊙	POLE, TOWER, SPIRE, ANTENNA, ETC			
★	AERONAUTICAL GROUND LIGHT			
✱	OBSTRUCTION LIGHT			
■	BUILDING OR LARGE STRUCTURE			
—+—	RAILROAD			
—+—	TRANSMISSION LINE OR OVERHEAD CABLE			
▨	LEVEE			
⌘	TREE			
○	LAKE			
—	CONTOUR(S)			
▲	TRIANGULATION POINT			
—	RIVER			



CHANGE: Update

# AERODROME OBSTACLE CHART-ICAO

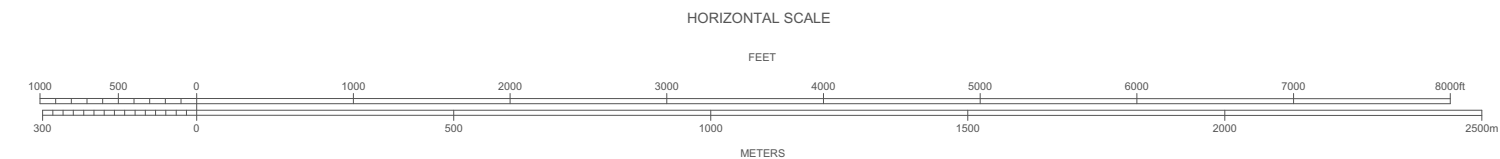
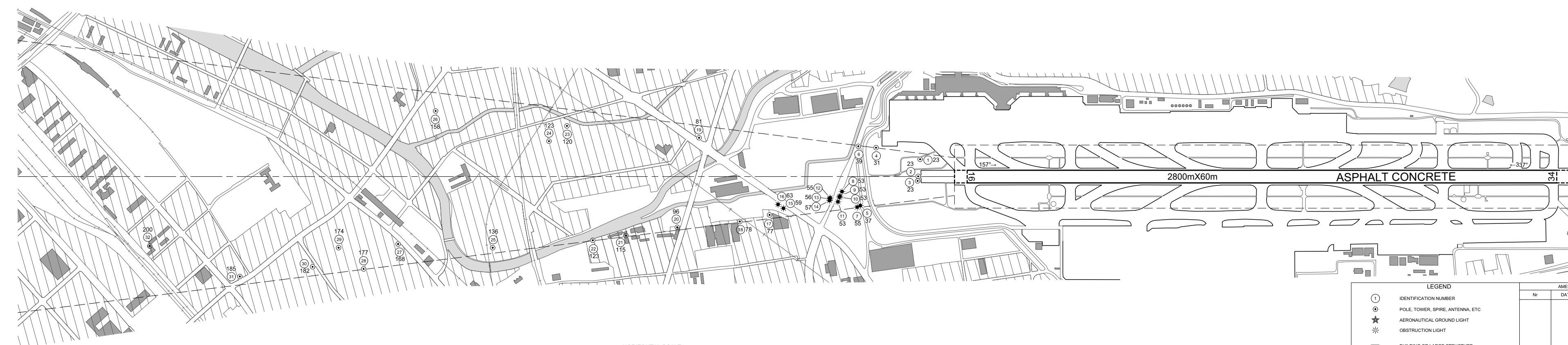
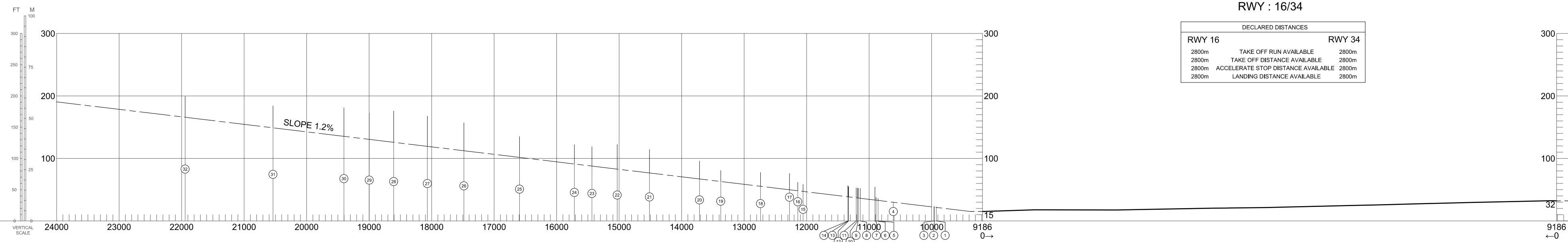
TYPE A (OPERATING LIMITATIONS)

DIMENSIONS AND ELEVATIONS IN FEET BEARINGS ARE MAGNETIC

MAGNETIC VARIATION 8°W-MAR 2020

FUKUOKA AIRPORT  
RWY : 16/34

DECLARED DISTANCES	
<b>RWY 16</b>	<b>RWY 34</b>
2800m TAKE OFF RUN AVAILABLE	2800m
2800m TAKE OFF DISTANCE AVAILABLE	2800m
2800m ACCELERATE STOP DISTANCE AVAILABLE	2800m
2800m LANDING DISTANCE AVAILABLE	2800m

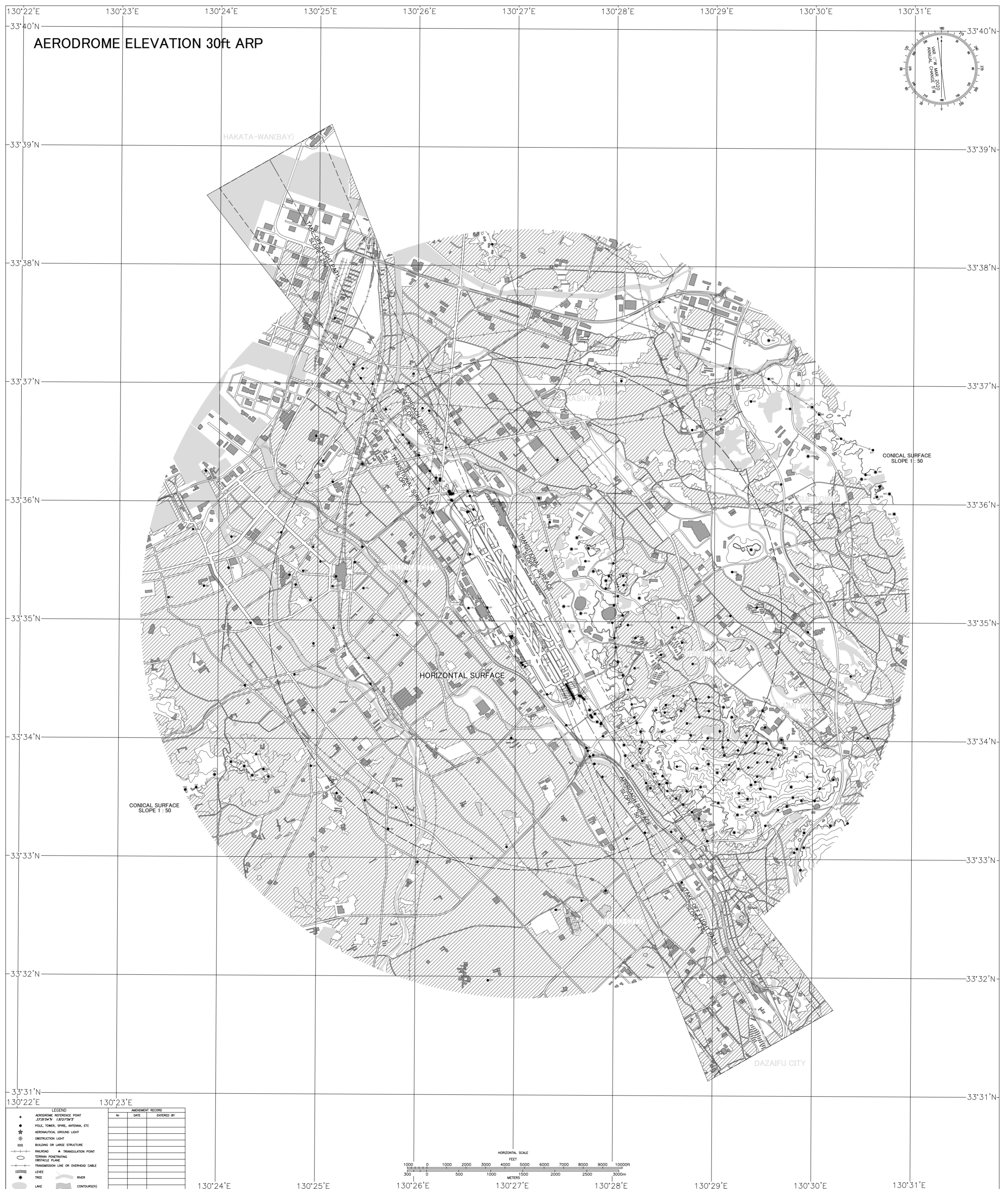


LEGEND		AMENDMENT RECORD		
(1)	IDENTIFICATION NUMBER	Nr	DATE	ENTERED BY
(O)	POLE, TOWER, SPIRE, ANTENNA, ETC			
(★)	AERONAUTICAL GROUND LIGHT			
(*)	OBSTRUCTION LIGHT			
(■)	BUILDING OR LARGE STRUCTURE			
(—+—)	RAILROAD			
(—▲—)	TRIANGULATION POINT			
(— — — —)	TRANSMISSION LINE OR OVERHEAD CABLE			
(     )	LEVEE			
(*)	TREE			
(○)	LAKE			
(—)	RIVER			
(---)	CONTOURS(5)			

CHANGE: Update

**AERODROME OBSTACLE CHART - ICAO**  
TYPE B

DIMENSIONS AND ELEVATIONS IN FEET BEARINGS ARE MAGNETIC



CHANGE: Update

STANDARD DEPARTURE CHART -INSTRUMENT

RJFF / FUKUOKA

SID

OGUNI EIGHT DEPARTURE

RWY 16 : Climb RWY HDG to 700FT, turn right, via DGC R160 to 30.0DME, turn left, via TFE R256 to OGUNI.

Cross DGC R160/28.0DME between FL150 and FL200.

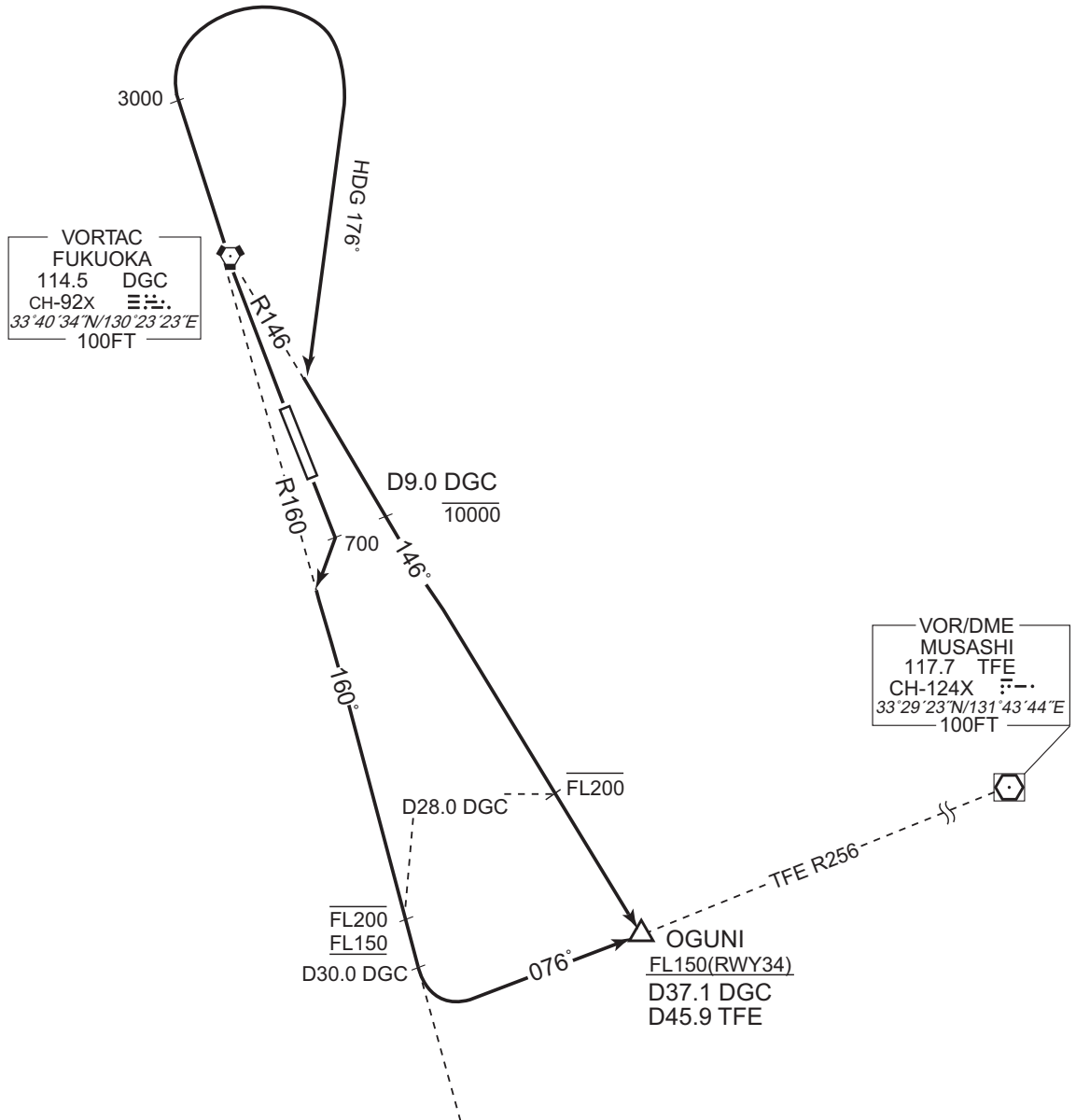
RWY 34 : Climb RWY HDG to 3000FT, turn right HDG176° to intercept and proceed via DGC R146 to OGUNI.

Cross DGC R146/9.0DME at or below 10000FT, cross DGC R146/28.0DME at or below FL200, cross OGUNI at or above FL150.

Note RWY16 : 5.8% climb gradient required up to 1100FT.

OBST ALT 399FT located at 1.2NM 138° FM end of RWY16.

OBST ALT 1470FT located at 6.2NM 182° FM end of RWY16.



CHANGE : Description of PROC name.

STANDARD DEPARTURE CHART -INSTRUMENT

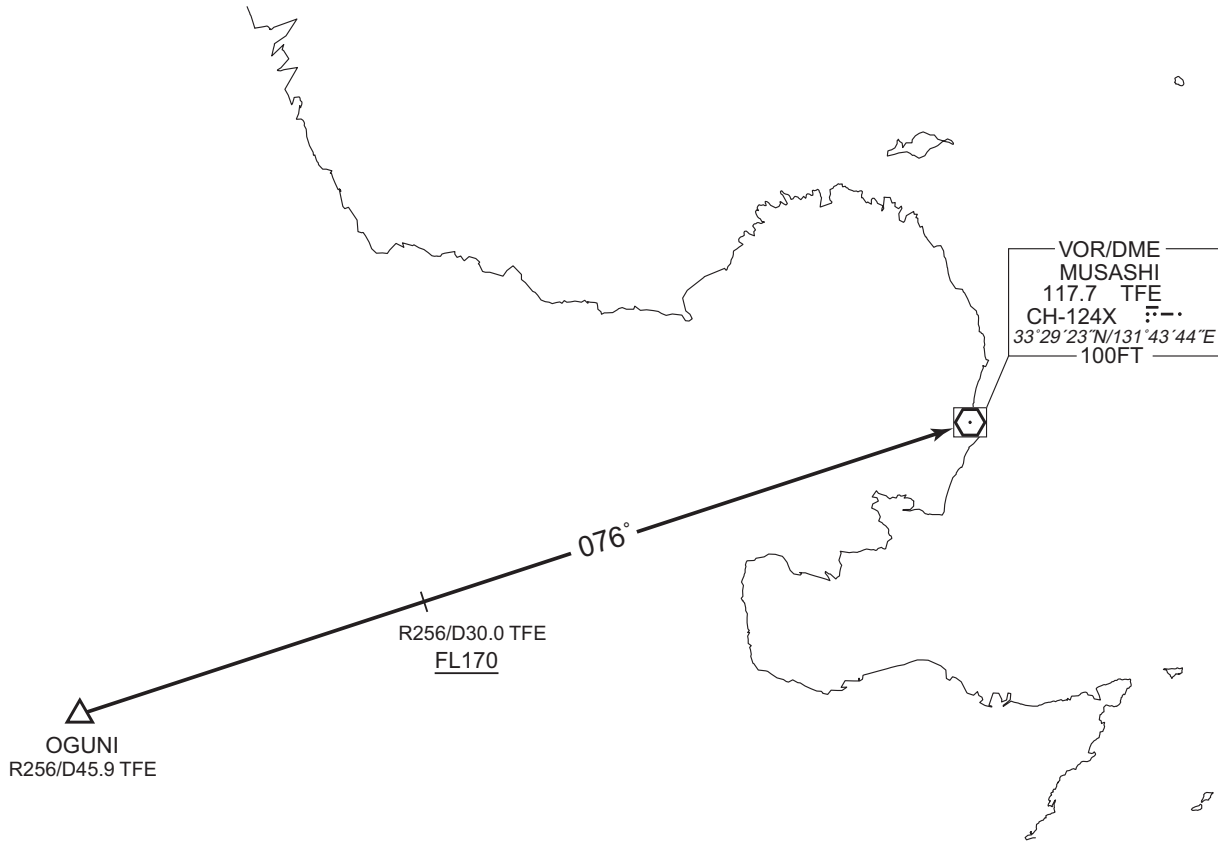
RJFF / FUKUOKA

TRANSITION

MUSASHI TRANSITION

From over OGUNI, via TFE R256 to TFE VOR/DME.

Cross TFE R256/30.0DME at or above FL170.



CHANGE : Description of PROC name.



STANDARD DEPARTURE CHART-INSTRUMENT

RJFF / FUKUOKA

SID

YAMEK NINE DEPARTURE

RWY 16 : Climb RWY HDG to 700FT, turn right, via DGC R160 to YAMEK.  
Cross YAMEK at or above 5000FT.

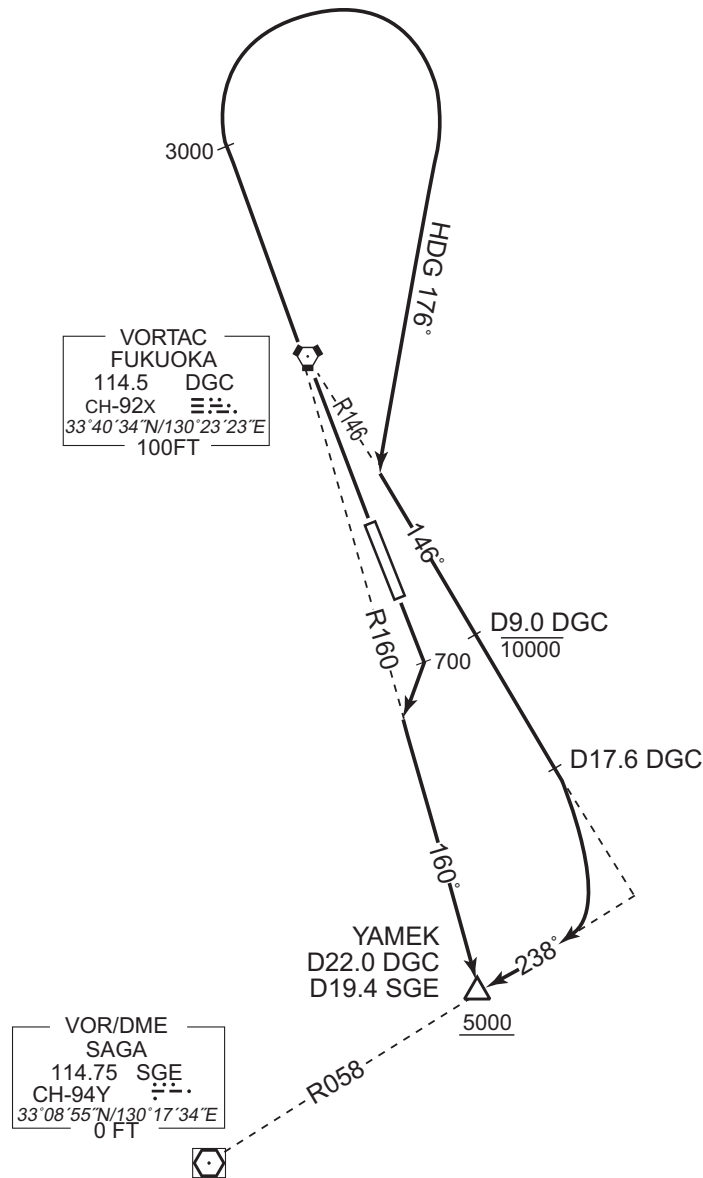
RWY 34 : Climb RWY HDG to 3000FT, turn right HDG 176° to intercept and proceed via  
DGC R146 to DGC 17.6DME, turn right, via SGE R058 to YAMEK.  
Cross DGC R146/9.0DME at or below 10000FT, cross YAMEK at or above  
5000FT.

Note RWY16 : 5.8% climb gradient required up to 1100FT.

OBST ALT 399FT located at 1.2NM 138° FM end of RWY16.

OBST ALT 1470FT located at 6.2NM 182° FM end of RWY16.

CHANGE : Description of PROC name.



STANDARD DEPARTURE CHART-INSTRUMENT

RJFF / FUKUOKA

SID

YAMGA SEVEN DEPARTURE

RWY 16 : Climb RWY HDG to 700FT, turn right, via DGC R160 to YAMGA.

Cross DGC R160/28.0DME at or below FL200, cross YAMGA at or above 13000FT.

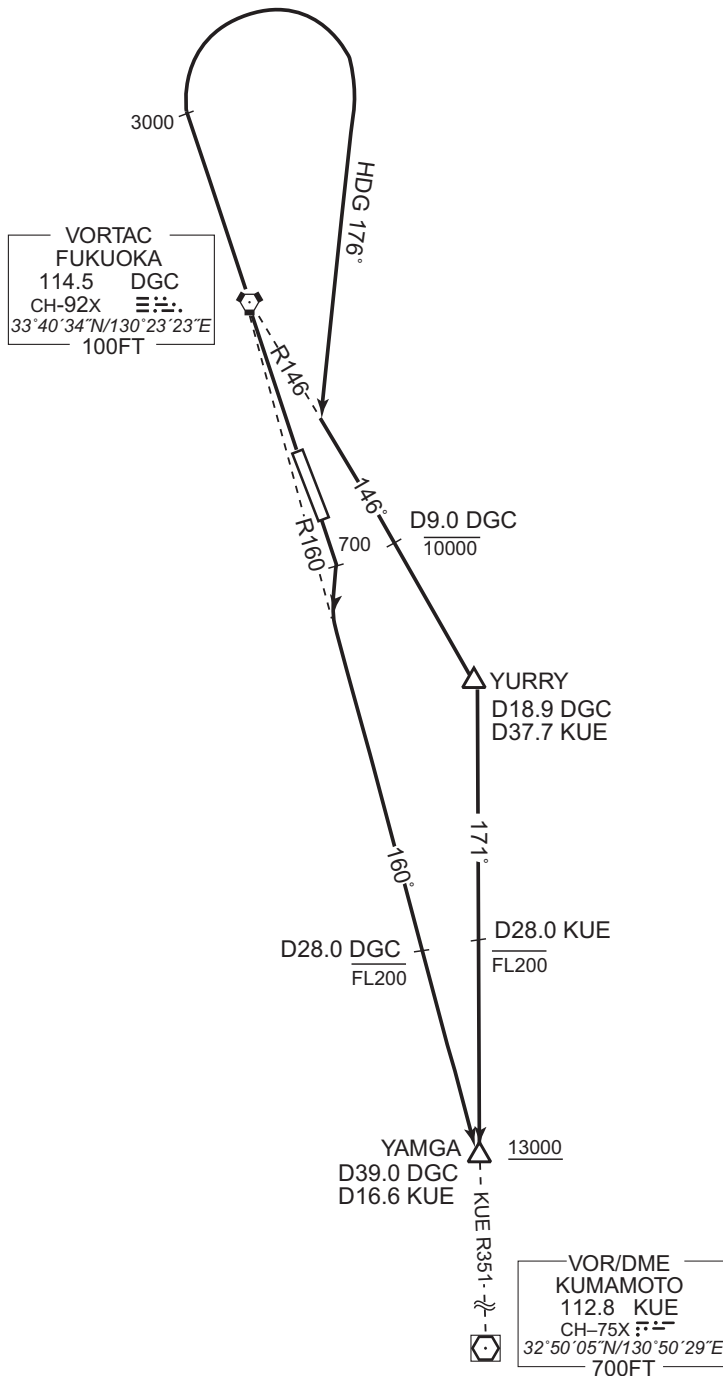
RWY 34 : Climb RWY HDG to 3000FT, turn right HDG 176° to intercept and proceed via DGC R146 to YURRY, turn right, via KUE R351 to YAMGA.

Cross DGC R146/9.0DME at or below 10000FT, cross KUE R351/28.0DME at or below FL200, cross YAMGA at or above 13000FT.

Note RWY16 : 5.8% climb gradient required up to 1100FT.

OBST ALT 399FT located at 1.2NM 138° FM end of RWY16.

OBST ALT 1470FT located at 6.2NM 182° FM end of RWY16.



CHANGE : Description of PROC name.

STANDARD DEPARTURE CHART-INSTRUMENT

RJFF / FUKUOKA

SID

FUKUOKA FOUR DEPARTURE

RWY 16 : Climb RWY HDG to 700FT, turn right, via DGC R160 to YAMEK, turn right,  
via DGC R179 (MRA 7000FT) to DGC VORTAC.

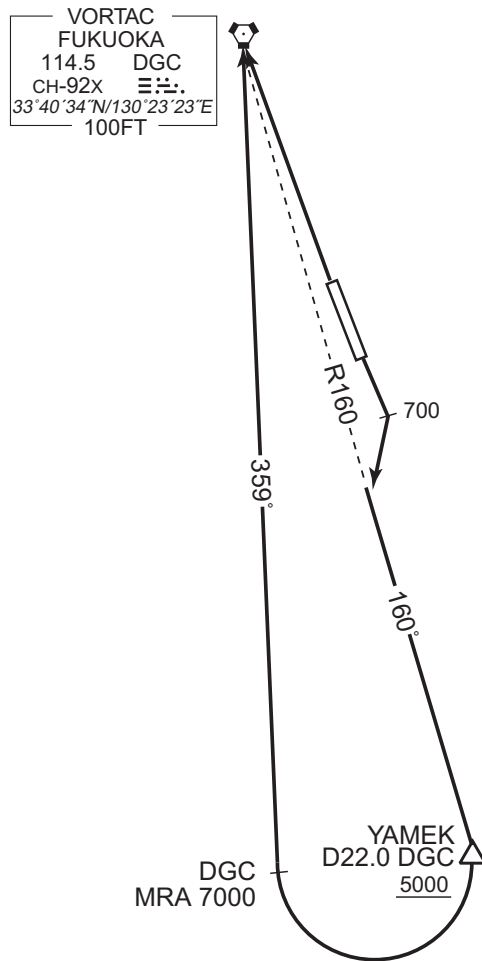
Cross YAMEK at or above 5000FT.

RWY 34 : Climb direct to DGC VORTAC.

Note RWY16 : 5.8% climb gradient required up to 1100FT.

OBST ALT 399FT located at 1.2NM 138° FM end of RWY16.

OBST ALT 1470FT located at 6.2NM 182° FM end of RWY16.



CHANGE : Description of PROC name.

## STANDARD DEPARTURE CHART-INSTRUMENT

RJFF / FUKUOKA

TRANSITION

KAGOSHIMA TRANSITION

From over YAMGA, proceed via HKC R013 to HKC VORTAC via KEIKA, IPUDO and AJISE.

Cross KEIKA at or below FL180.

KUMAMOTO TRANSITION

From over YAMGA, proceed via KUE R351 to KUE VOR/DME via ABECK.

Cross ABECK at assigned altitude.

SAGA TRANSITION

From over YAMEK, proceed via SGE R058 to SGE VOR/DME.

MIZMA TRANSITION

From over YAMEK, proceed via SGE R058 to MIZMA.

Cross MIZMA at or above 8000FT.

IKI TRANSITION

From over YAMEK, turn right, proceed via IKE R128 to IKE VOR/DME .

Cross IKE R128/37.0DME at or above 6000FT.

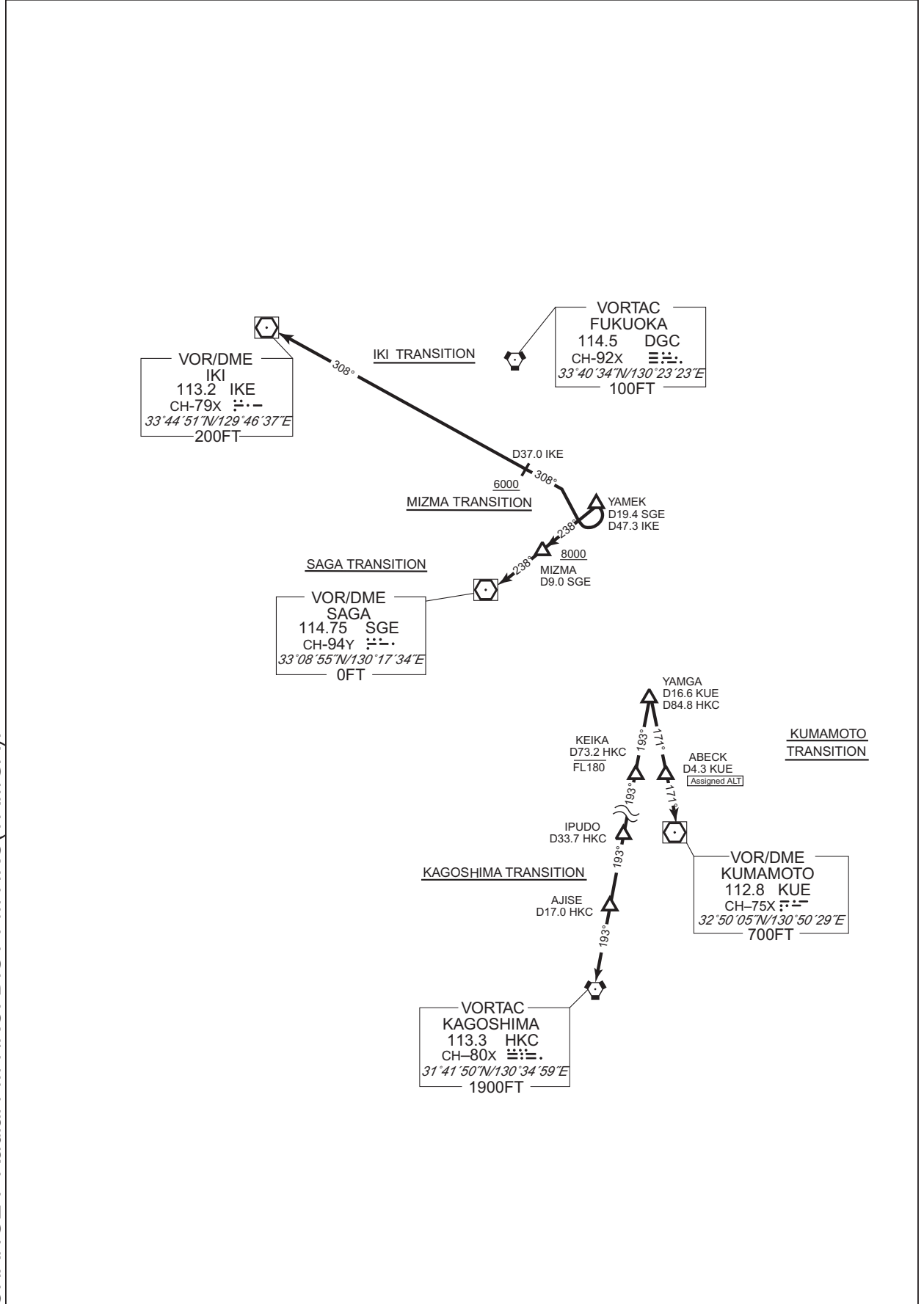
CHANGE : Radial FM HKC.

STANDARD DEPARTURE CHART-INSTRUMENT

RJFF / FUKUOKA

TRANSITION

CHANGE : Radial FM HKC. DIST FM HKC(YAMGA).



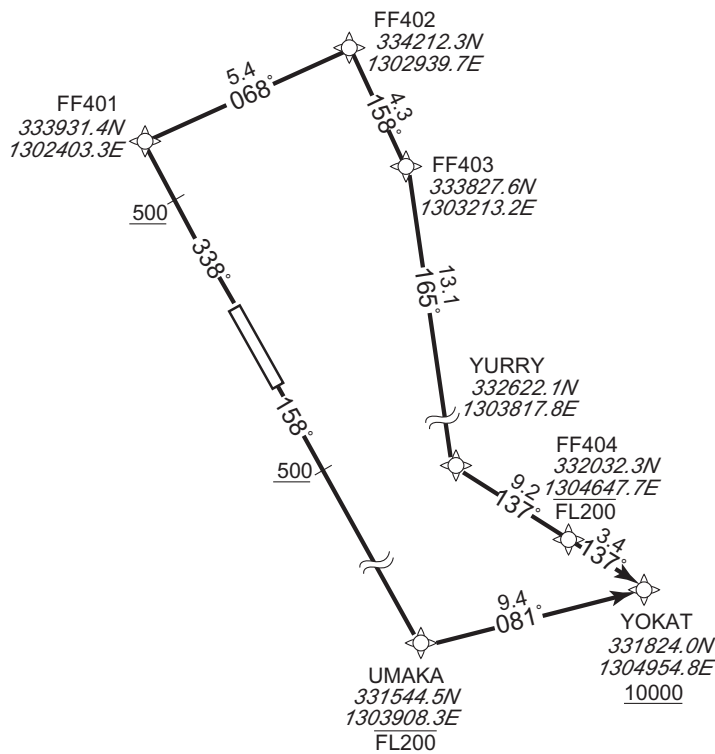
STANDARD DEPARTURE CHART-INSTRUMENT

RJFF / FUKUOKA

RNAV SID

YOKAT FIVE DEPARTURE		RNAV 1
Note 1 ) DME/DME/IRU or GNSS required. ※The aircraft equipped with only DME/DME/IRU must be able to update its position without delay at the starting point of take-off roll. 2 ) RADAR service required.	Critical DME	RWY16 : DGC "1.0NM FM DER~5.4NM FM DER" IKE "1.0NM FM DER~5.4NM FM DER" RWY34 : DGC "3.5NM to FF401~2.2NM to FF401" IKE "3.5NM to FF401~2.2NM to FF401"
	DME GAP	RWY16 : DER~1.0NM FM DER RWY34 : DER~0.9NM FM DER 2.2NM to FF401~FF403
	Inappropriate Navaids	See AD1.1.6.10.3. Inappropriate NAVAIDS for RNAV1

VAR 8°W



CHANGE : Description of VAR and PROC name.

RWY34 : Climb on HDG 338° at or above 500FT, direct to FF401, to FF402, to FF403, to YURRY, to FF404 at or below FL200, to YOKAT at or above 10000FT.  
 RWY16 : Climb on HDG 158° at or above 500FT, direct to UMAKA at or below FL200, to YOKAT at or above 10000FT.

Note RWY34 : 7.0% climb gradient required up to 2800FT.  
 RWY16 : 5.8% climb gradient required up to 1100FT.  
 OBST ALT 399FT located at 1.2NM 138° FM end of RWY16.  
 OBST ALT 1470FT located at 6.2NM 182° FM end of RWY16.

STANDARD DEPARTURE CHART-INSTRUMENT

RJFF / FUKUOKA

RNAV SID

YOKAT FIVE DEPARTURE

RWY34

Serial Number	Path Descriptor	Waypoint Identifier	Fly Over	Course °M(°T)	Magnetic Variation	Distance (NM)	Turn Direction	Altitude (FT)	Speed (KIAS)	Vertical Angle	Navigation Specification
001	VA	—	—	338 (330.3)	-7.7	—	—	+500	—	—	RNAV1
002	DF	FF401	—	—	-7.7	—	—	—	—	—	RNAV1
003	TF	FF402	—	068 (060.1)	-7.7	5.4	—	—	—	—	RNAV1
004	TF	FF403	—	158 (150.4)	-7.7	4.3	—	—	—	—	RNAV1
005	TF	YURRY	—	165 (157.2)	-7.7	13.1	—	—	—	—	RNAV1
006	TF	FF404	—	137 (129.4)	-7.7	9.2	—	-FL200	—	—	RNAV1
007	TF	YOKAT	—	137 (129.4)	-7.7	3.4	—	+10000	—	—	RNAV1

RWY16

Serial Number	Path Descriptor	Waypoint Identifier	Fly Over	Course °M(°T)	Magnetic Variation	Distance (NM)	Turn Direction	Altitude (FT)	Speed (KIAS)	Vertical Angle	Navigation Specification
001	VA	—	—	158 (150.3)	-7.7	—	—	+500	—	—	RNAV1
002	DF	UMAKA	—	—	-7.7	—	—	-FL200	—	—	RNAV1
003	TF	YOKAT	—	081 (073.5)	-7.7	9.4	—	+10000	—	—	RNAV1

CHANGE : VAR. PROC renamed. PROC course.

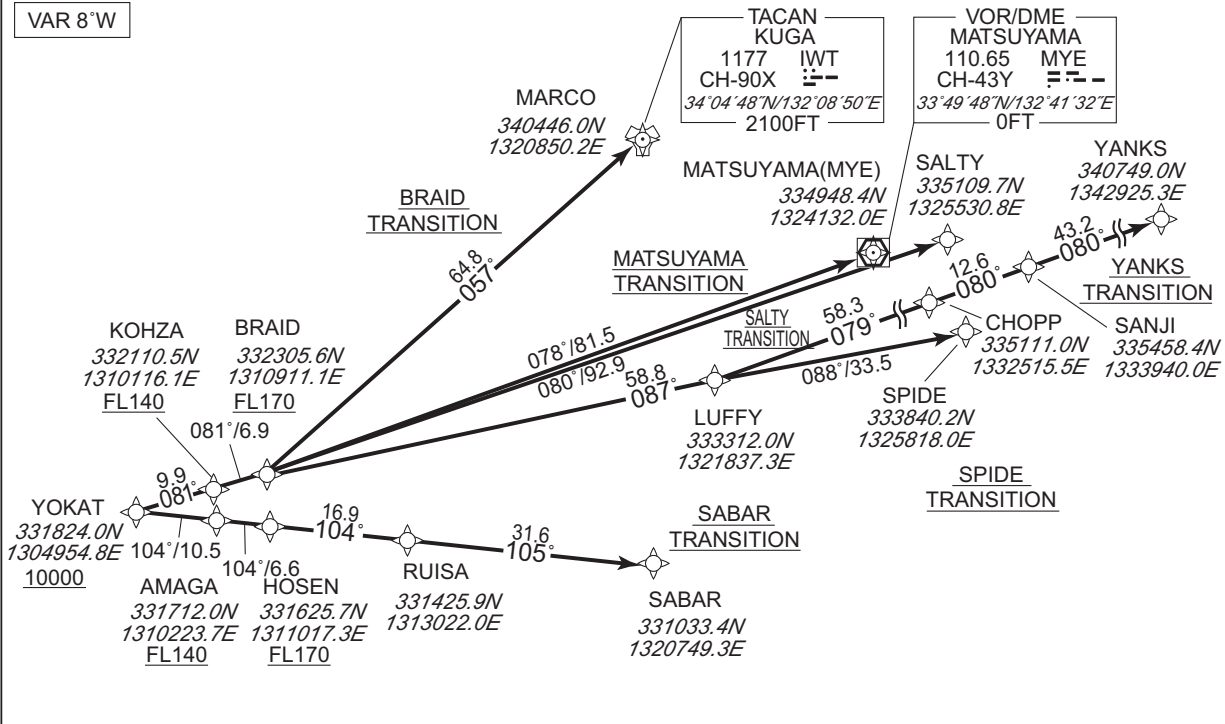
STANDARD DEPARTURE CHART-INSTRUMENT

RJFF / FUKUOKA

RNAV TRANSITION

BRAID TRANSITION / MATSUYAMA TRANSITION / SALTY TRANSITION YANKS TRANSITION / SPIDE TRANSITION / SABAR TRANSITION		RNAV 1
Note 1 ) DME/DME/IRU or GNSS required. 2 ) RADAR service required.	Critical DME	SABAR TRANSITION : SWE "YOKAT ~ RUIISA" SGE "HOSEN ~ RUIISA"
	DME GAP	-
	Inappropriate Nav aids	See AD1.1.6.10.3. Inappropriate NAVAIDs for RNAV1

VAR 8°W



BRAID TRANSITION

From YOKAT at or above 10000FT, to KOHZA at or above FL140, to BRAID at or above FL170, to MARCO.

MATSUYAMA TRANSITION

From YOKAT at or above 10000FT, to KOHZA at or above FL140, to BRAID at or above FL170, to MYE.

SALTY TRANSITION

From YOKAT at or above 10000FT, to KOHZA at or above FL140, to BRAID at or above FL170, to SALTY.

YANKS TRANSITION

From YOKAT at or above 10000FT, to KOHZA at or above FL140, to BRAID at or above FL170, to LUFFY, to CHOPP, to SANJI, to YANKS.

SPIDE TRANSITION

From YOKAT at or above 10000FT, to KOHZA at or above FL140, to BRAID at or above FL170, to LUFFY, to SPIDE.

SABAR TRANSITION

From YOKAT at or above 10000FT, to AMAGA at or above FL140, to HOSEN at or above FL170, to RUIISA, to SABAR.

CHANGE : Description of VAR.



STANDARD DEPARTURE CHART-INSTRUMENT

RJFF / FUKUOKA

RNAV TRANSITION

BRAID TRANSITION

Serial Number	Path Descriptor	Waypoint Identifier	Fly Over	Course °M(°T)	Magnetic Variation	Distance (NM)	Turn Direction	Altitude (FT)	Speed (KIAS)	Vertical Angle	Navigation Specification
001	IF	YOKAT	—	—	-7.7	—	—	+10000	—	—	RNAV1
002	TF	KOHZA	—	081 (073.6)	-7.7	9.9	—	+FL140	—	—	RNAV1
003	TF	BRAID	—	081 (073.8)	-7.7	6.9	—	+FL170	—	—	RNAV1
004	TF	MARCO	—	057 (049.7)	-7.7	64.8	—	—	—	—	RNAV1

MATSUYAMA TRANSITION

Serial Number	Path Descriptor	Waypoint Identifier	Fly Over	Course °M(°T)	Magnetic Variation	Distance (NM)	Turn Direction	Altitude (FT)	Speed (KIAS)	Vertical Angle	Navigation Specification
001	IF	YOKAT	—	—	-7.7	—	—	+10000	—	—	RNAV1
002	TF	KOHZA	—	081 (073.6)	-7.7	9.9	—	+FL140	—	—	RNAV1
003	TF	BRAID	—	081 (073.8)	-7.7	6.9	—	+FL170	—	—	RNAV1
004	TF	MYE	—	078 (070.4)	-7.7	81.5	—	—	—	—	RNAV1

SALTY TRANSITION

Serial Number	Path Descriptor	Waypoint Identifier	Fly Over	Course °M(°T)	Magnetic Variation	Distance (NM)	Turn Direction	Altitude (FT)	Speed (KIAS)	Vertical Angle	Navigation Specification
001	IF	YOKAT	—	—	-7.7	—	—	+10000	—	—	RNAV1
002	TF	KOHZA	—	081 (073.6)	-7.7	9.9	—	+FL140	—	—	RNAV1
003	TF	BRAID	—	081 (073.8)	-7.7	6.9	—	+FL170	—	—	RNAV1
004	TF	SALTY	—	080 (071.9)	-7.7	92.9	—	—	—	—	RNAV1

CHANGE : VAR. Course FM BRAID to SALTY.

STANDARD DEPARTURE CHART-INSTRUMENT

RJFF / FUKUOKA

RNAV TRANSITION

YANKS TRANSITION

Serial Number	Path Descriptor	Waypoint Identifier	Fly Over	Course °M(°T)	Magnetic Variation	Distance (NM)	Turn Direction	Altitude (FT)	Speed (KIAS)	Vertical Angle	Navigation Specification
001	IF	YOKAT	—	—	-7.7	—	—	+10000	—	—	RNAV1
002	TF	KOHZA	—	081 (073.6)	-7.7	9.9	—	+FL140	—	—	RNAV1
003	TF	BRAID	—	081 (073.8)	-7.7	6.9	—	+FL170	—	—	RNAV1
004	TF	LUFFY	—	087 (079.8)	-7.7	58.8	—	—	—	—	RNAV1
005	TF	CHOPP	—	079 (071.7)	-7.7	58.3	—	—	—	—	RNAV1
006	TF	SANJI	—	080 (072.4)	-7.7	12.6	—	—	—	—	RNAV1
007	TF	YANKS	—	080 (072.5)	-7.7	43.2	—	—	—	—	RNAV1

SPIDE TRANSITION

Serial Number	Path Descriptor	Waypoint Identifier	Fly Over	Course °M(°T)	Magnetic Variation	Distance (NM)	Turn Direction	Altitude (FT)	Speed (KIAS)	Vertical Angle	Navigation Specification
001	IF	YOKAT	—	—	-7.7	—	—	+10000	—	—	RNAV1
002	TF	KOHZA	—	081 (073.6)	-7.7	9.9	—	+FL140	—	—	RNAV1
003	TF	BRAID	—	081 (073.8)	-7.7	6.9	—	+FL170	—	—	RNAV1
004	TF	LUFFY	—	087 (079.8)	-7.7	58.8	—	—	—	—	RNAV1
005	TF	SPIDE	—	088 (080.4)	-7.7	33.5	—	—	—	—	RNAV1

SABAR TRANSITION

Serial Number	Path Descriptor	Waypoint Identifier	Fly Over	Course °M(°T)	Magnetic Variation	Distance (NM)	Turn Direction	Altitude (FT)	Speed (KIAS)	Vertical Angle	Navigation Specification
001	IF	YOKAT	—	—	-7.7	—	—	+10000	—	—	RNAV1
002	TF	AMAGA	—	104 (096.5)	-7.7	10.5	—	+FL140	—	—	RNAV1
003	TF	HOSEN	—	104 (096.6)	-7.7	6.6	—	+FL170	—	—	RNAV1
004	TF	RUISA	—	104 (096.7)	-7.7	16.9	—	—	—	—	RNAV1
005	TF	SABAR	—	105 (096.9)	-7.7	31.6	—	—	—	—	RNAV1

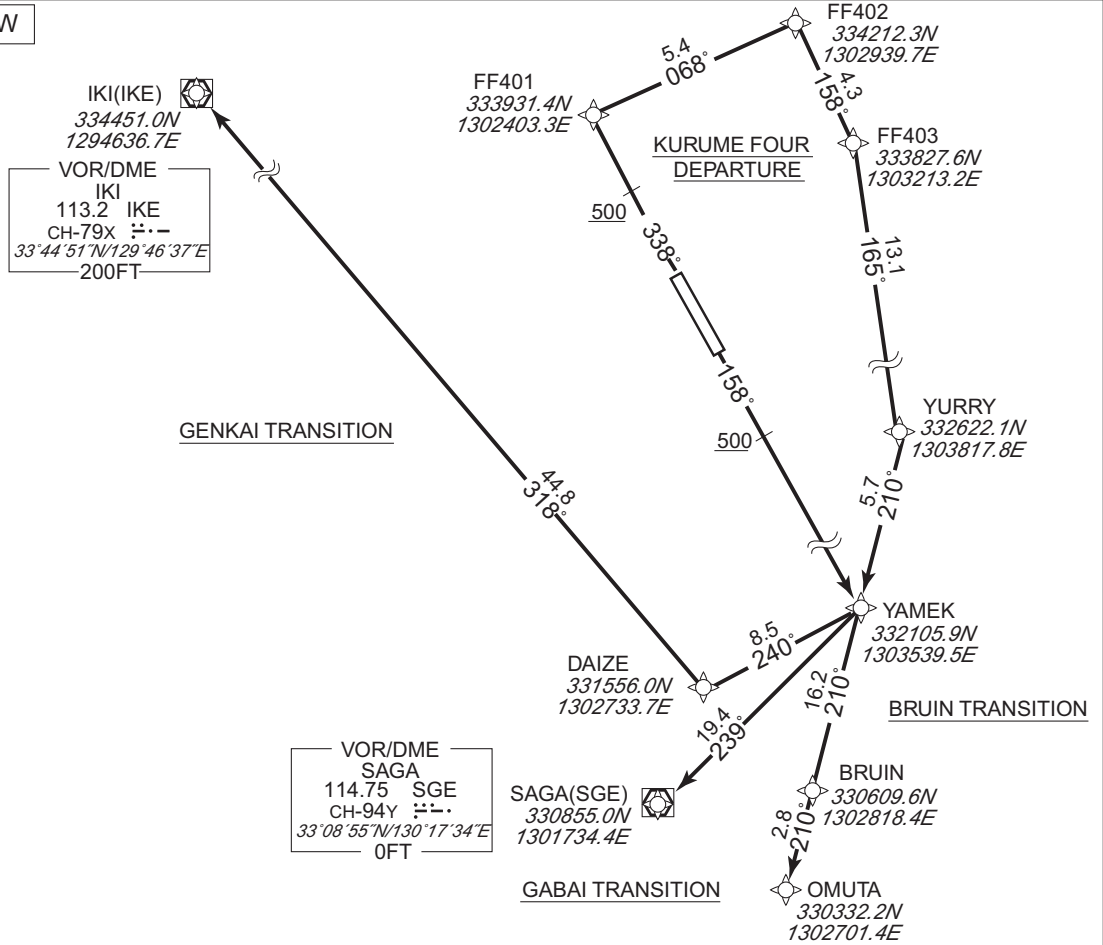
CHANGE : VAR. CHOPP established. Course FM RUISA to SABAR.

STANDARD DEPARTURE CHART - INSTRUMENT

RJFF / FUKUOKA RNAV SID and TRANSITION

KURUME FOUR DEPARTURE GABAI TRANSITION / BRUIN TRANSITION / GENKAI TRANSITION		RNAV 1
Note 1) DME/DME/IRU or GNSS required. ※The aircraft equipped with only DME/DME/IRU must be able to update its position without delay at the starting point of take-off roll. 2) RADAR service required.	Critical DME  DME GAP  Inappropriate Nav aids	RWY16 : DGC "1.0NM FM DER~5.4NM FM DER" IKE "1.0NM FM DER~5.4NM FM DER" RWY34 : DGC "3.5NM to FF401~2.2NM to FF401" IKE "3.5NM to FF401~2.2NM to FF401" BRUIN TRANSITION : DGC "2NM to OMTA~OMUTA" RWY16 : DER~1.0NM FM DER RWY34 : DER~0.9NM FM DER 2.2NM to FF401~FF403 GABAI TRANSITION : 6.4NM to SGE~SGE See AD1.1.6.10.3. Inappropriate NAV AIDs for RNAV1

VAR 8°W



CHANGE : Description of VAR.

KURUME FOUR DEPARTURE

RWY34 : Climb on HDG 338° at or above 500FT, direct to FF401, to FF402, to FF403, to YURRY, to YAMEK.

RWY16 : Climb on HDG 158° at or above 500FT, direct to YAMEK.

Note RWY34 : 7.0% climb gradient required up to 2800FT.

RWY16 : 5.8% climb gradient required up to 1100FT.

OBST ALT 399FT located at 1.2NM 138° FM end of RWY16.

OBST ALT 1470FT located at 6.2NM 182° FM end of RWY16.

BRUIN TRANSITION

From YAMEK, to BRUIN, to OMTA.

GABAI TRANSITION

From YAMEK, to SGE.

GENKAI TRANSITION

From YAMEK, to DAIZE to IKE.

STANDARD DEPARTURE CHART - INSTRUMENT

RJFF / FUKUOKA

RNAV SID

KURUME FOUR DEPARTURE

RWY34

Serial Number	Path Descriptor	Waypoint Identifier	Fly Over	Course °M(°T)	Magnetic Variation	Distance (NM)	Turn Direction	Altitude (FT)	Speed (KIAS)	Vertical Angle	Navigation Specification
001	VA	—	—	338 (330.3)	-7.7	—	—	+500	—	—	RNAV1
002	DF	FF401	—	—	-7.7	—	—	—	—	—	RNAV1
003	TF	FF402	—	068 (060.1)	-7.7	5.4	—	—	—	—	RNAV1
004	TF	FF403	—	158 (150.4)	-7.7	4.3	—	—	—	—	RNAV1
005	TF	YURRY	—	165 (157.2)	-7.7	13.1	—	—	—	—	RNAV1
006	TF	YAMEK	—	210 (202.7)	-7.7	5.7	—	—	—	—	RNAV1

RWY16

Serial Number	Path Descriptor	Waypoint Identifier	Fly Over	Course °M(°T)	Magnetic Variation	Distance (NM)	Turn Direction	Altitude (FT)	Speed (KIAS)	Vertical Angle	Navigation Specification
001	VA	—	—	158 (150.3)	-7.7	—	—	+500	—	—	RNAV1
002	DF	YAMEK	—	—	-7.7	—	—	—	—	—	RNAV1

CHANGE : VAR. SID renamed. PROC course.

STANDARD DEPARTURE CHART - INSTRUMENT

RJFF / FUKUOKA

RNAV TRANSITION

BRUIN TRANSITION

Serial Number	Path Descriptor	Waypoint Identifier	Fly Over	Course °M(°T)	Magnetic Variation	Distance (NM)	Turn Direction	Altitude (FT)	Speed (KIAS)	Vertical Angle	Navigation Specification
001	IF	YAMEK	—	—	-7.7	—	—	—	—	—	RNAV1
002	TF	BRUIN	—	210 (202.4)	-7.7	16.2	—	—	—	—	RNAV1
003	TF	OMUTA	—	210 (202.3)	-7.7	2.8	—	—	—	—	RNAV1

GABAI TRANSITION

Serial Number	Path Descriptor	Waypoint Identifier	Fly Over	Course °M(°T)	Magnetic Variation	Distance (NM)	Turn Direction	Altitude (FT)	Speed (KIAS)	Vertical Angle	Navigation Specification
001	IF	YAMEK	—	—	-7.7	—	—	—	—	—	RNAV1
002	TF	SGE	—	239 (231.2)	-7.7	19.4	—	—	—	—	RNAV1

GENKAI TRANSITION

Serial Number	Path Descriptor	Waypoint Identifier	Fly Over	Course °M(°T)	Magnetic Variation	Distance (NM)	Turn Direction	Altitude (FT)	Speed (KIAS)	Vertical Angle	Navigation Specification
001	IF	YAMEK	—	—	-7.7	—	—	—	—	—	RNAV1
002	TF	DAIZE	—	240 (232.7)	-7.7	8.5	—	—	—	—	RNAV1
003	TF	IKE	—	318 (310.4)	-7.7	44.8	—	—	—	—	RNAV1

CHANGE : VAR. PROC course.

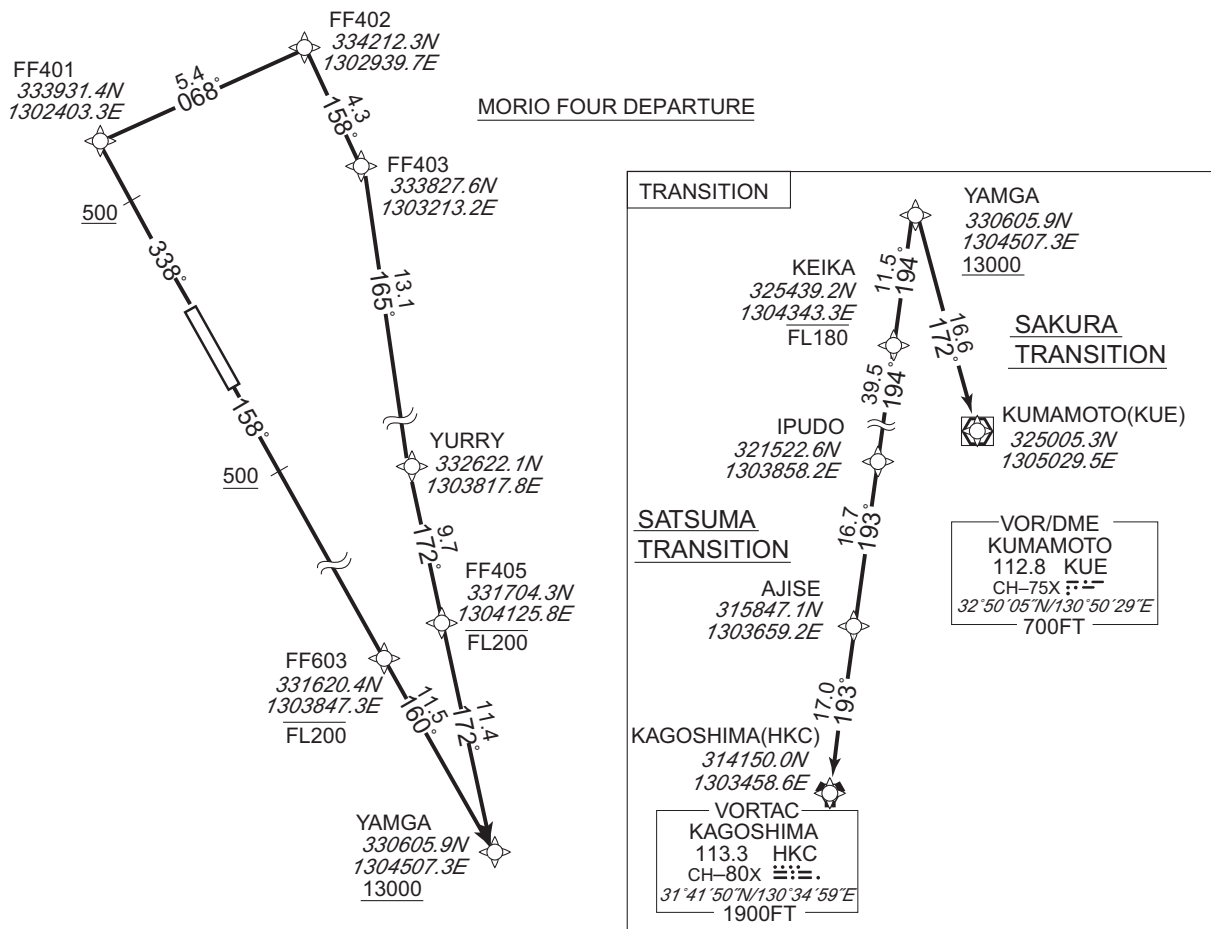
STANDARD DEPARTURE CHART - INSTRUMENT

RJFF / FUKUOKA

RNAV SID and TRANSITION

<b>MORIO FOUR DEPARTURE SATSUMA TRANSITION / SAKURA TRANSITION</b>		<b>RNAV 1</b>
Note 1) DME/DME/IRU or GNSS required. ※The aircraft equipped with only DME/DME/IRU must be able to update its position without delay at the starting point of take-off roll. 2) RADAR service required.	Critical DME	RWY16 :DGC "1.0NM FM DER~5.4NM FM DER" IKE "1.0NM FM DER~5.4NM FM DER" RWY34 :DGC "3.5NM to FF401~2.2NM to FF401" IKE "3.5NM to FF401~2.2NM to FF401"
	DME GAP	RWY16 :DER~1.0NM FM DER RWY34 :DER~0.9NM FM DER 2.2NM to FF401~FF403
	Inappropriate NavAids	See AD1.1.6.10.3. Inappropriate NAVAIDS for RNAV1

VAR 8°W



CHANGE : Description of VAR.

**MORIO FOUR DEPARTURE**

RWY34 : Climb on HDG 338° at or above 500FT, direct to FF401, to FF402, to FF403, to YURRY, to FF405 at or below FL200, to YAMGA at or above 13000FT.

RWY16 : Climb on HDG 158° at or above 500FT, direct to FF603 at or below FL200, to YAMGA at or above 13000FT.

Note RWY34 : 7.0% climb gradient required up to 2800FT.

RWY16 : 5.8% climb gradient required up to 1100FT.

OBST ALT 399FT located at 1.2NM 138° FM end of RWY16.

OBST ALT 1470FT located at 6.2NM 182° FM end of RWY16.

**SAKURA TRANSITION**

From YAMGA at or above 13000FT, to KUE.

**SATSUMA TRANSITION**

From YAMGA at or above 13000FT, to KEIKA at or below FL180, to IPUDO, to AJISE, to HKC.

STANDARD DEPARTURE CHART - INSTRUMENT

RJFF / FUKUOKA

RNAV SID

MORIO FOUR DEPARTURE

RWY34

Serial Number	Path Descriptor	Waypoint Identifier	Fly Over	Course °M(°T)	Magnetic Variation	Distance (NM)	Turn Direction	Altitude (FT)	Speed (KIAS)	Vertical Angle	Navigation Specification
001	VA	—	—	338 (330.3)	-7.7	—	—	+500	—	—	RNAV1
002	DF	FF401	—	—	-7.7	—	—	—	—	—	RNAV1
003	TF	FF402	—	068 (060.1)	-7.7	5.4	—	—	—	—	RNAV1
004	TF	FF403	—	158 (150.4)	-7.7	4.3	—	—	—	—	RNAV1
005	TF	YURRY	—	165 (157.2)	-7.7	13.1	—	—	—	—	RNAV1
006	TF	FF405	—	172 (164.3)	-7.7	9.7	—	-FL200	—	—	RNAV1
007	TF	YAMGA	—	172 (164.3)	-7.7	11.4	—	+13000	—	—	RNAV1

RWY16

Serial Number	Path Descriptor	Waypoint Identifier	Fly Over	Course °M(°T)	Magnetic Variation	Distance (NM)	Turn Direction	Altitude (FT)	Speed (KIAS)	Vertical Angle	Navigation Specification
001	VA	—	—	158 (150.3)	-7.7	—	—	+500	—	—	RNAV1
002	DF	FF603	—	—	-7.7	—	—	-FL200	—	—	RNAV1
003	TF	YAMGA	—	160 (152.6)	-7.7	11.5	—	+13000	—	—	RNAV1

CHANGE : VAR. PROC renamed. PROC course. ALT restriction at YAMGA.

STANDARD DEPARTURE CHART - INSTRUMENT

RJFF / FUKUOKA

RNAV TRANSITION

SAKURA TRANSITION

Serial Number	Path Descriptor	Waypoint Identifier	Fly Over	Course °M(°T)	Magnetic Variation	Distance (NM)	Turn Direction	Altitude (FT)	Speed (KIAS)	Vertical Angle	Navigation Specification
001	IF	YAMGA	—	—	-7.7	—	—	+13000	—	—	RNAV1
002	TF	KUE	—	172 (164.3)	-7.7	16.6	—	—	—	—	RNAV1

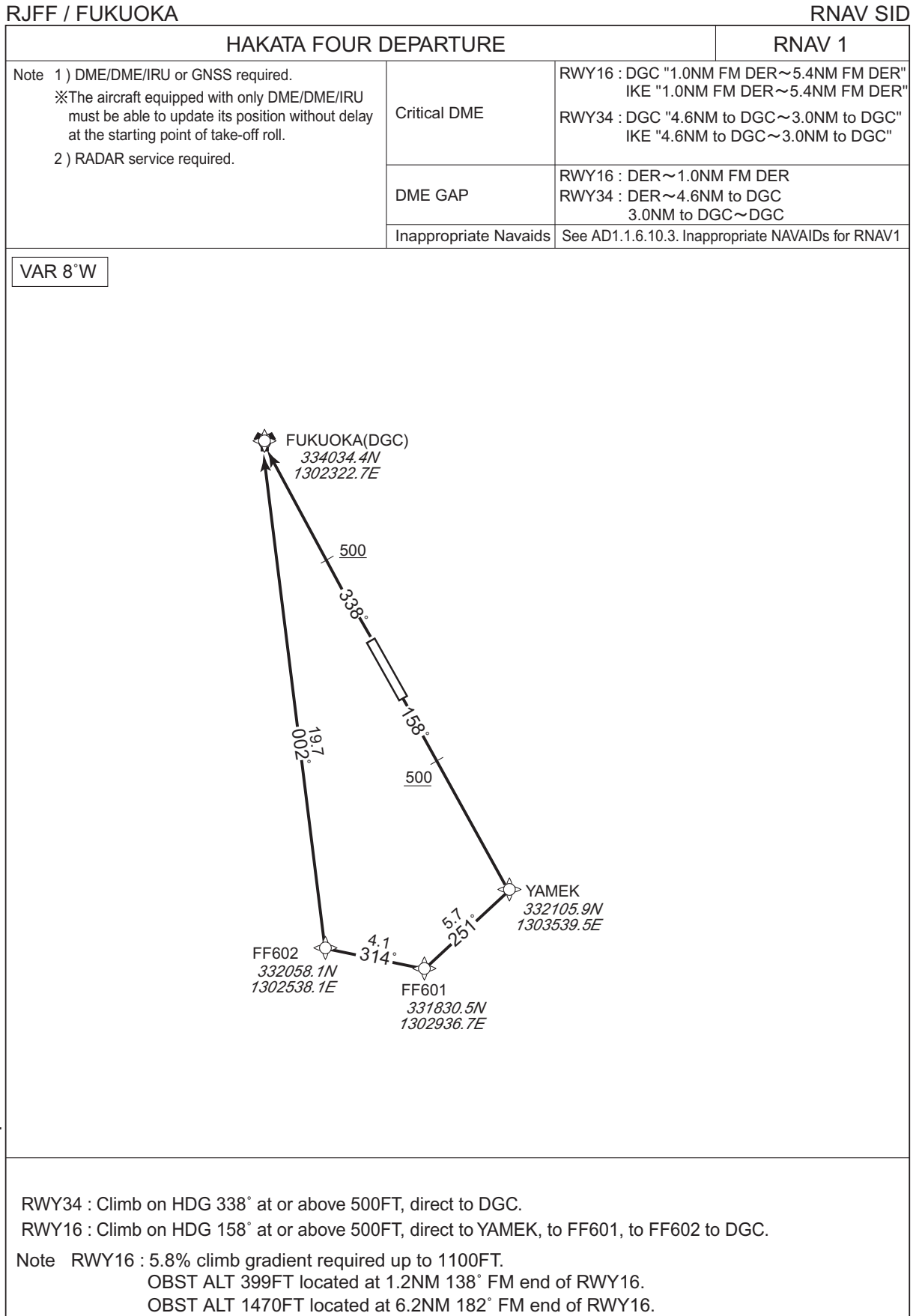
SATSUMA TRANSITION

Serial Number	Path Descriptor	Waypoint Identifier	Fly Over	Course °M(°T)	Magnetic Variation	Distance (NM)	Turn Direction	Altitude (FT)	Speed (KIAS)	Vertical Angle	Navigation Specification
001	IF	YAMGA	—	—	-7.7	—	—	+13000	—	—	RNAV1
002	TF	KEIKA	—	194 (185.9)	-7.7	11.5	—	-FL180	—	—	RNAV1
003	TF	IPUDO	—	194 (185.8)	-7.7	39.5	—	—	—	—	RNAV1
004	TF	AJISE	—	193 (185.8)	-7.7	16.7	—	—	—	—	RNAV1
005	TF	HKC	—	193 (185.8)	-7.7	17.0	—	—	—	—	RNAV1

CHANGE : IPUDO established. ALT restriction at KEIKA.



STANDARD DEPARTURE CHART - INSTRUMENT



CHANGE : Description of VAR and PROC name.

STANDARD DEPARTURE CHART - INSTRUMENT

RJFF / FUKUOKA

RNAV SID

HAKATA FOUR DEPARTURE

RWY34

Serial Number	Path Descriptor	Waypoint Identifier	Fly Over	Course °M(°T)	Magnetic Variation	Distance (NM)	Turn Direction	Altitude (FT)	Speed (KIAS)	Vertical Angle	Navigation Specification
001	VA	—	—	338 (330.3)	-7.7	—	—	+500	—	—	RNAV1
002	DF	DGC	—	—	-7.7	—	—	—	—	—	RNAV1

RWY16

Serial Number	Path Descriptor	Waypoint Identifier	Fly Over	Course °M(°T)	Magnetic Variation	Distance (NM)	Turn Direction	Altitude (FT)	Speed (KIAS)	Vertical Angle	Navigation Specification
001	VA	—	—	158 (150.3)	-7.7	—	—	+500	—	—	RNAV1
002	DF	YAMEK	—	—	-7.7	—	—	—	—	—	RNAV1
003	TF	FF601	—	251 (242.9)	-7.7	5.7	—	—	—	—	RNAV1
004	TF	FF602	—	314 (306.5)	-7.7	4.1	—	—	—	—	RNAV1
005	TF	DGC	—	002 (354.5)	-7.7	19.7	—	—	—	—	RNAV1

CHANGE : VAR. PROC renamed. PROC course.

STANDARD ARRIVAL CHART-INSTRUMENT

RJFF / FUKUOKA

STAR

LAGER ARRIVAL

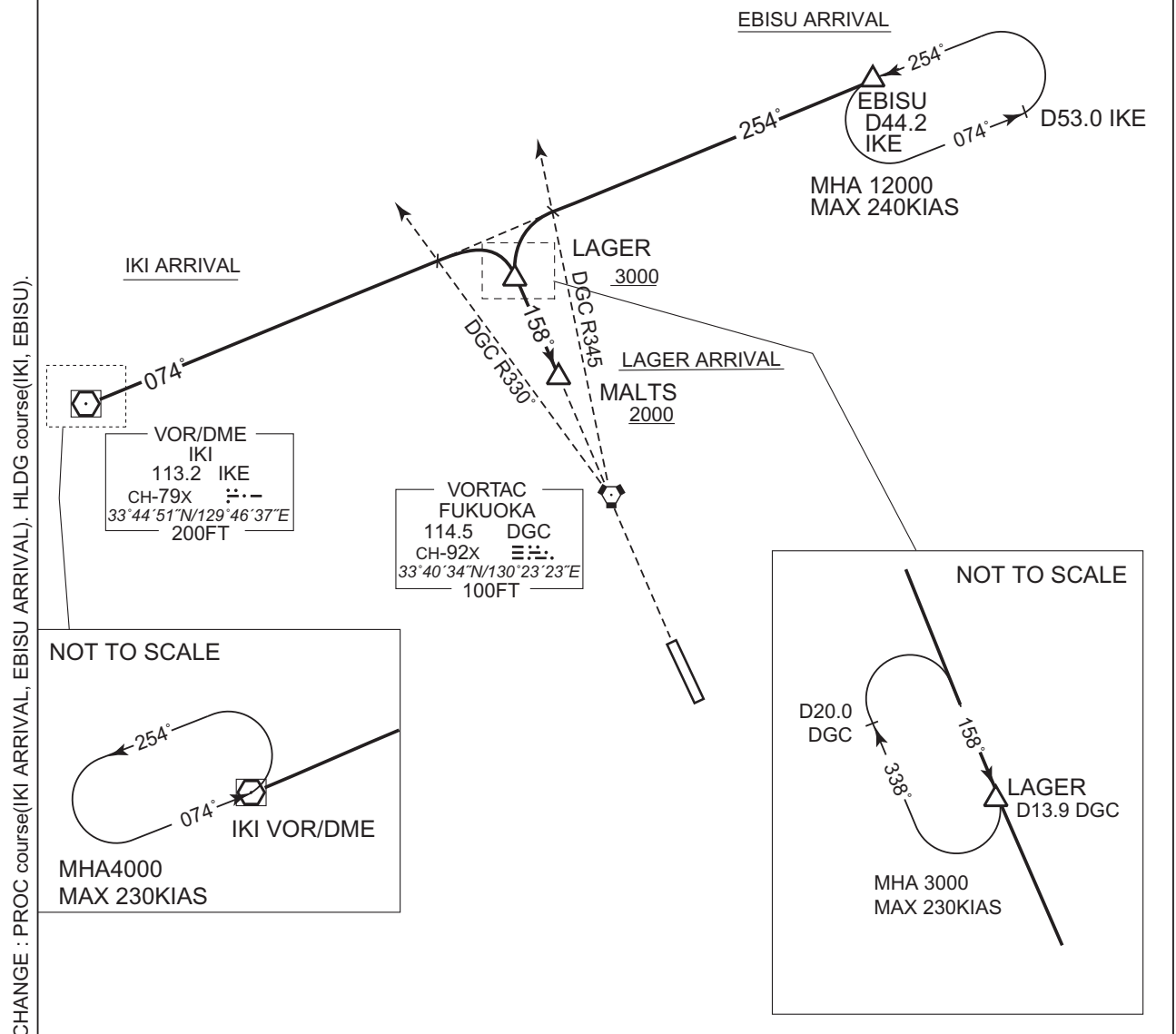
From over LAGER, via DGC R338 to MALTS.  
Cross LAGER at or above 3000FT, cross MALTS at or above 2000FT.

EBISU ARRIVAL

From over EBISU, via IKE R074 to intercept and proceed via DGC R338 to MALTS via LAGER.  
Cross LAGER at or above 3000FT, cross MALTS at or above 2000FT.

IKI ARRIVAL

From over IKE VOR/DME, via IKE R074 to intercept and proceed via DGC R338 to MALTS via LAGER.  
Cross LAGER at or above 3000FT, cross MALTS at or above 2000FT.



STANDARD ARRIVAL CHART-INSTRUMENT

RJFF / FUKUOKA

STAR

KAFRI EAST ARRIVAL

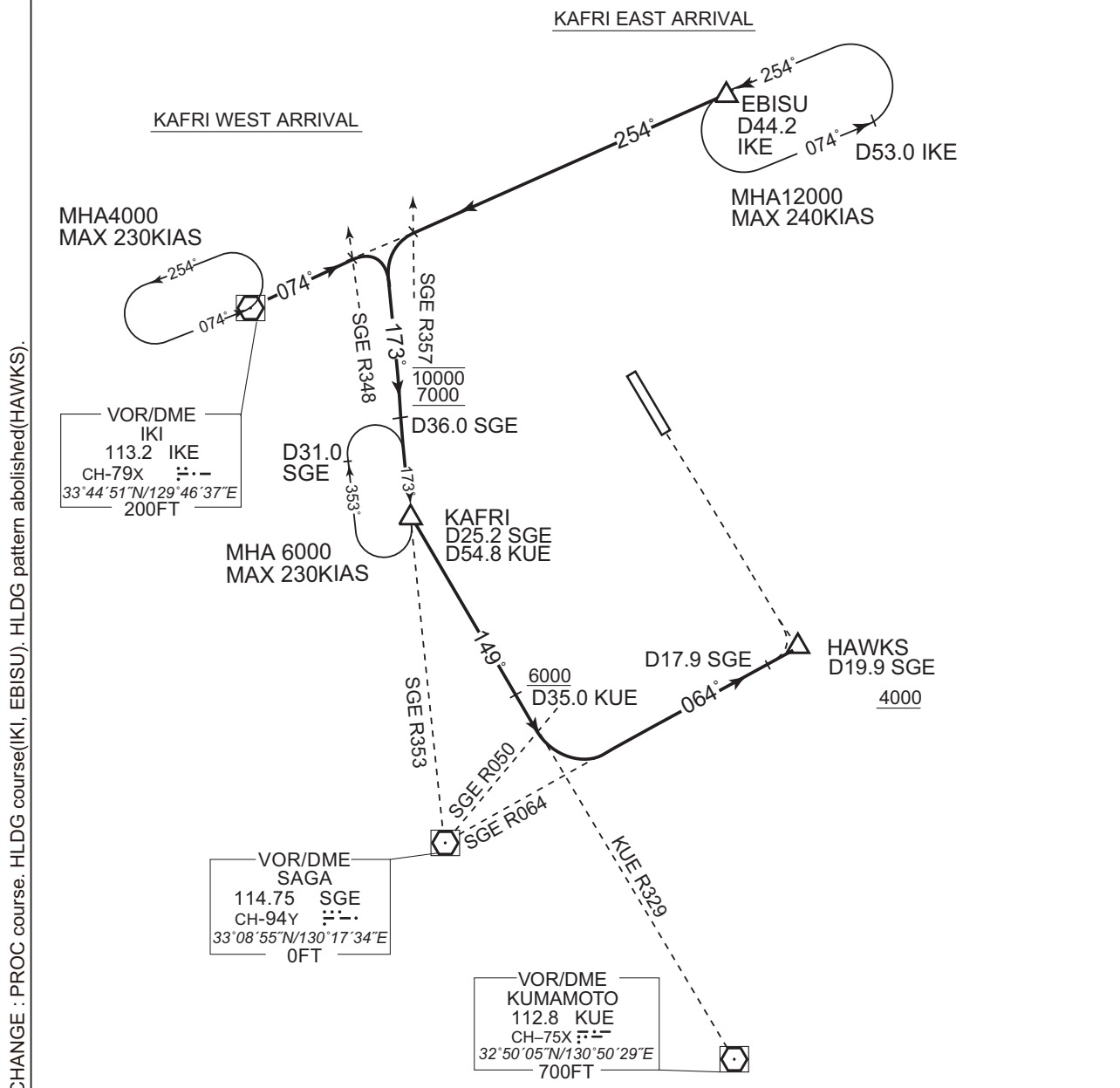
From over EBISU, proceed via IKE R074 to intercept and proceed via SGE R353 to KAFRI, via KUE R329 to intercept and proceed via SGE R064 to HAWKS.

Cross SGE R353/36.0DME between 7000FT and 10000FT, cross KUE R329/35.0DME at or above 6000FT, cross HAWKS at or above 4000FT.

KAFRI WEST ARRIVAL

From over IKE VOR/DME, proceed via IKE R074 to intercept and proceed via SGE R353 to KAFRI, via KUE R329, to intercept and proceed via SGE R064 to HAWKS.

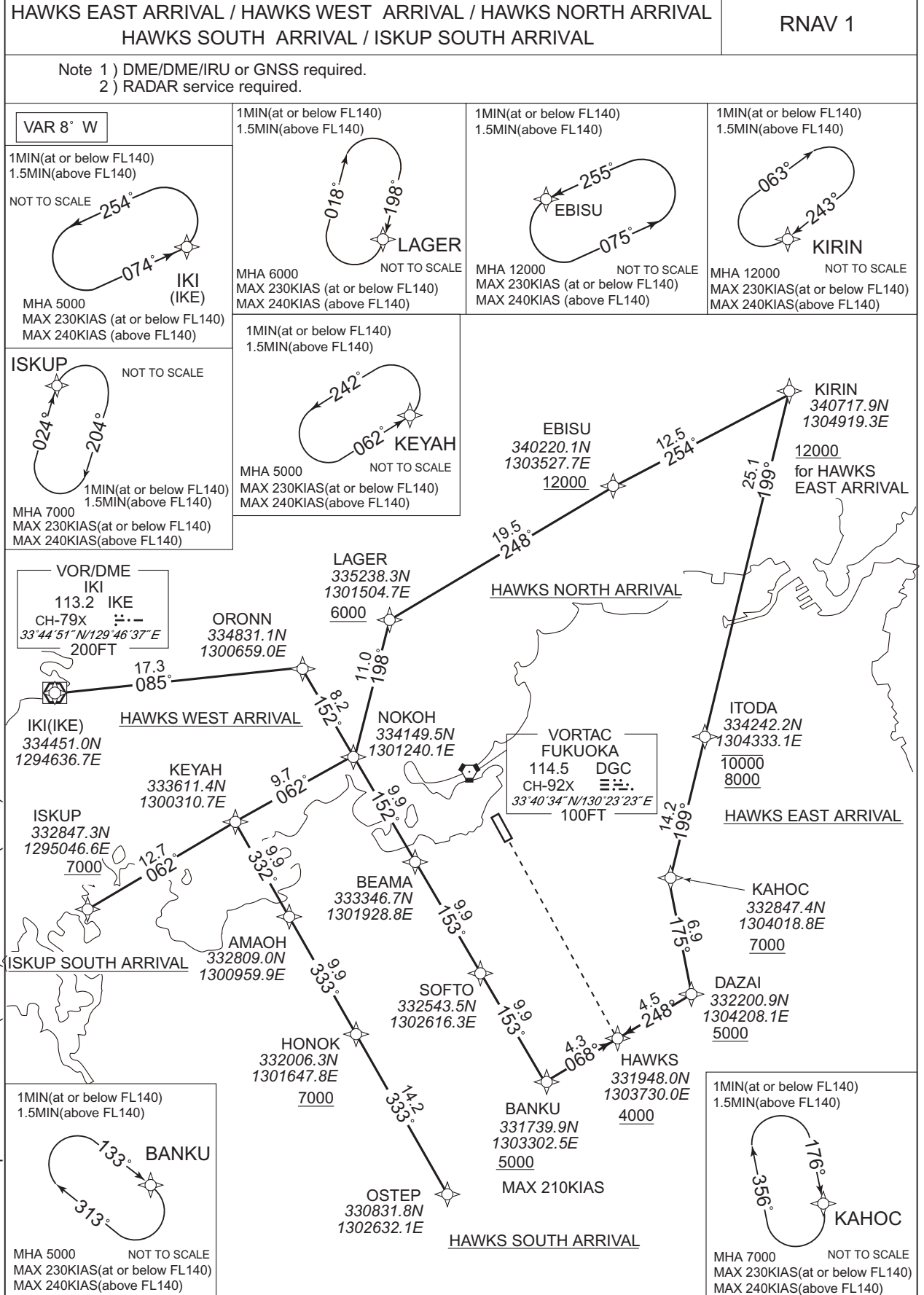
Cross SGE R353/36.0DME between 7000FT and 10000FT, cross KUE R329/35.0DME at or above 6000FT, cross HAWKS at or above 4000FT.



STANDARD ARRIVAL CHART-INSTRUMENT

RJFF / FUKUOKA

RNAV STAR RWY34



STANDARD ARRIVAL CHART-INSTRUMENT

RJFF / FUKUOKA

RNAV STAR RWY34

**HAWKS EAST ARRIVAL**

From KIRIN at or above 12000FT, to ITODA between 10000FT and 8000FT, to KAHOC at or above 7000FT, to DAZAI at or above 5000FT, to HAWKS at or above 4000FT.

Critical DME	-	-
	-	-
	-	-
DME GAP	-	
Inappropriate Nav aids	See AD1.1.6.10.3. Inappropriate NAVAIDs for RNAV1	

Serial Number	Path Descriptor	Waypoint Identifier	Fly Over	Course °M(°T)	Magnetic Variation	Distance (NM)	Turn Direction	Altitude (FT)	Speed (KIAS)	Vertical Angle	Navigation Specification
001	IF	KIRIN	-	-	-7.7	-	-	+12000	-	-	RNAV1
002	TF	ITODA	-	199 (191.0)	-7.7	25.1	-	-10000 +8000	-	-	RNAV1
003	TF	KAHOC	-	199 (191.0)	-7.7	14.2	-	+7000	-	-	RNAV1
004	TF	DAZAI	-	175 (167.3)	-7.7	6.9	-	+5000	-	-	RNAV1
005	TF	HAWKS	-	248 (240.3)	-7.7	4.5	-	+4000	-	-	RNAV1

Path	Waypoint Identifier	Inbound Course °M(°T)	Magnetic Variation	Outbound Time (MIN)	Turn Direction	Minimum Altitude (FT)	Maximum Altitude (FT)	Speed (KIAS)	Navigation Specification
Hold	KIRIN	243 (235.1)	-8.0	1.0(-14000) 1.5(+14001)	R	12000	-	-230(-14000) -240(+14001)	RNAV1
Hold	KAHOC	176 (167.3)	-7.7	1.0(-14000) 1.5(+14001)	R	7000	-	-230(-14000) -240(+14001)	RNAV1

**HAWKS WEST ARRIVAL**

From IKE, to ORONN, to NOKOH, to BEAMA, to SOFTO, to BANKU at or above 5000FT, to HAWKS at or above 4000FT.

Critical DME	DGC	IKE - 15.0NM to ORONN 6.0NM to ORONN - 5.0NM to NOKOH
	KUE	IKE - 15.0NM to ORONN
	IKE	6.0NM to ORONN - 5.0NM to NOKOH
	SGE	9.0NM to BEAMA - 6.0NM to BEAMA
DME GAP	15.0NM to ORONN - 6.0NM to ORONN 5.0NM to NOKOH - 9.0NM to BEAMA	
Inappropriate Nav aids	See AD1.1.6.10.3. Inappropriate NAVAIDs for RNAV1	

Serial Number	Path Descriptor	Waypoint Identifier	Fly Over	Course °M(°T)	Magnetic Variation	Distance (NM)	Turn Direction	Altitude (FT)	Speed (KIAS)	Vertical Angle	Navigation Specification
001	IF	IKE	-	-	-7.7	-	-	-	-	-	RNAV1
002	TF	ORONN	-	085 (077.7)	-7.7	17.3	-	-	-	-	RNAV1
003	TF	NOKOH	-	152 (144.7)	-7.7	8.2	-	-	-	-	RNAV1
004	TF	BEAMA	-	152 (144.8)	-7.7	9.9	-	-	-	-	RNAV1
005	TF	SOFTO	-	153 (144.9)	-7.7	9.9	-	-	-	-	RNAV1
006	TF	BANKU	-	153 (144.9)	-7.7	9.9	-	+5000	-210	-	RNAV1
007	TF	HAWKS	-	068 (060.2)	-7.7	4.3	-	+4000	-	-	RNAV1

Path	Waypoint Identifier	Inbound Course °M(°T)	Magnetic Variation	Outbound Time (MIN)	Turn Direction	Minimum Altitude (FT)	Maximum Altitude (FT)	Speed (KIAS)	Navigation Specification
Hold	IKE	074 (066.4)	-8.0	1.0(-14000) 1.5(+14001)	L	5000	-	-230(-14000) -240(+14001)	RNAV1
Hold	BANKU	133 (125.0)	-7.7	1.0(-14000) 1.5(+14001)	R	5000	-	-230(-14000) -240(+14001)	RNAV1

CHANGE : HLDG pattern (KIRIN).

STANDARD ARRIVAL CHART-INSTRUMENT

RJFF / FUKUOKA

RNAV STAR RWY34

HAWKS NORTH ARRIVAL

From KIRIN, to EBISU at or above 12000FT, to LAGER at or above 6000FT, to NOKOH, to BEAMA, to SOFTO, to BANKU at or above 5000FT, to HAWKS at or above 4000FT.

Critical DME	IKE	4.0NM to LAGER - 3.0NM to NOKOH
	DGC	LAGER - 3.0NM to NOKOH
	SGE	9.0NM to BEAMA - 6.0NM to BEAMA
DME GAP	3.0NM to NOKOH - 9.0NM to BEAMA	
Inappropriate Nav aids	See AD1.1.6.10.3. Inappropriate NAVAIDS for RNAV1	

Serial Number	Path Descriptor	Waypoint Identifier	Fly Over	Course °M(°T)	Magnetic Variation	Distance (NM)	Turn Direction	Altitude (FT)	Speed (KIAS)	Vertical Angle	Navigation Specification
001	IF	KIRIN	-	-	-7.7	-	-	-	-	-	RNAV1
002	TF	EBISU	-	254 (246.7)	-7.7	12.5	-	+12000	-	-	RNAV1
003	TF	LAGER	-	248 (240.3)	-7.7	19.5	-	+6000	-	-	RNAV1
004	TF	NOKOH	-	198 (190.5)	-7.7	11.0	-	-	-	-	RNAV1
005	TF	BEAMA	-	152 (144.8)	-7.7	9.9	-	-	-	-	RNAV1
006	TF	SOFTO	-	153 (144.9)	-7.7	9.9	-	-	-	-	RNAV1
007	TF	BANKU	-	153 (144.9)	-7.7	9.9	-	+5000	-210	-	RNAV1
008	TF	HAWKS	-	068 (060.2)	-7.7	4.3	-	+4000	-	-	RNAV1

Path	Waypoint Identifier	Inbound Course °M(°T)	Magnetic Variation	Outbound Time (MIN)	Turn Direction	Minimum Altitude (FT)	Maximum Altitude (FT)	Speed (KIAS)	Navigation Specification
Hold	KIRIN	243 (235.1)	-8.0	1.0(-14000) 1.5(+14001)	R	12000	-	-230(-14000) -240(+14001)	RNAV1
Hold	EBISU	255 (246.6)	-8.0	1.0(-14000) 1.5(+14001)	L	12000	-	-230(-14000) -240(+14001)	RNAV1
Hold	LAGER	198 (190.5)	-8.0	1.0(-14000) 1.5(+14001)	R	6000	-	-230(-14000) -240(+14001)	RNAV1
Hold	BANKU	133 (125.0)	-7.7	1.0(-14000) 1.5(+14001)	R	5000	-	-230(-14000) -240(+14001)	RNAV1

CHANGE : HLDG pattern (KIRIN).

STANDARD ARRIVAL CHART-INSTRUMENT

RJFF / FUKUOKA

RNAV STAR RWY34

HAWKS SOUTH ARRIVAL

From OSTEP, to HONOK at or above 7000FT, to AMAOH, to KEYAH, to NOKOH, to BEAMA, to SOFTO, to BANKU at or above 5000FT, to HAWKS at or above 4000FT.

Critical DME	SGE	4.0NM to NOKOH - NOKOH 9.0NM to BEAMA - 6.0NM to BEAMA
DME GAP	NOKOH - 9.0NM to BEAMA	
Inappropriate Nav aids	See AD1.1.6.10.3. Inappropriate NAVAIDs for RNAV1	

Serial Number	Path Descriptor	Waypoint Identifier	Fly Over	Course °M(°T)	Magnetic Variation	Distance (NM)	Turn Direction	Altitude (FT)	Speed (KIAS)	Vertical Angle	Navigation Specification
001	IF	OSTEP	-	-	-7.7	-	-	-	-	-	RNAV1
002	TF	HONOK	-	333 (324.9)	-7.7	14.2	-	+7000	-	-	RNAV1
003	TF	AMAOH	-	333 (324.8)	-7.7	9.9	-	-	-	-	RNAV1
004	TF	KEYAH	-	332 (324.8)	-7.7	9.9	-	-	-	-	RNAV1
005	TF	NOKOH	-	062 (054.5)	-7.7	9.7	-	-	-	-	RNAV1
006	TF	BEAMA	-	152 (144.8)	-7.7	9.9	-	-	-	-	RNAV1
007	TF	SOFTO	-	153 (144.9)	-7.7	9.9	-	-	-	-	RNAV1
008	TF	BANKU	-	153 (144.9)	-7.7	9.9	-	+5000	-210	-	RNAV1
009	TF	HAWKS	-	068 (060.2)	-7.7	4.3	-	+4000	-	-	RNAV1

Path	Waypoint Identifier	Inbound Course °M(°T)	Magnetic Variation	Outbound Time (MIN)	Turn Direction	Minimum Altitude (FT)	Maximum Altitude (FT)	Speed (KIAS)	Navigation Specification
Hold	KEYAH	062 (054.5)	-7.7	1.0(-14000) 1.5(+14001)	L	5000	-	-230(-14000) -240(+14001)	RNAV1
Hold	BANKU	133 (125.0)	-7.7	1.0(-14000) 1.5(+14001)	R	5000	-	-230(-14000) -240(+14001)	RNAV1

CHANGE : VAR. PROC course. HLDG course(BANKU).



STANDARD ARRIVAL CHART-INSTRUMENT

RJFF / FUKUOKA

RNAV STAR RWY34

ISKUP SOUTH ARRIVAL

From ISKUP at or above 7000FT, to KEYAH, to NOKOH, to BEAMA, to SOFTO, to BANKU at or above 5000FT, to HAWKS at or above 4000FT.

Critical DME	SGE	4.0NM to NOKOH - NOKOH 9.0NM to BEAMA - 6.0NM to BEAMA
DME GAP	NOKOH - 9.0NM to BEAMA	
Inappropriate Nav aids	See AD1.1.6.10.3. Inappropriate NAVAIDs for RNAV1	

Serial Number	Path Descriptor	Waypoint Identifier	Fly Over	Course °M(°T)	Magnetic Variation	Distance (NM)	Turn Direction	Altitude (FT)	Speed (KIAS)	Vertical Angle	Navigation Specification
001	IF	ISKUP	-	-	-7.7	-	-	+7000	-	-	RNAV1
002	TF	KEYAH	-	062 (054.3)	-7.7	12.7	-	-	-	-	RNAV1
003	TF	NOKOH	-	062 (054.5)	-7.7	9.7	-	-	-	-	RNAV1
004	TF	BEAMA	-	152 (144.8)	-7.7	9.9	-	-	-	-	RNAV1
005	TF	SOFTO	-	153 (144.9)	-7.7	9.9	-	-	-	-	RNAV1
006	TF	BANKU	-	153 (144.9)	-7.7	9.9	-	+5000	-210	-	RNAV1
007	TF	HAWKS	-	068 (060.2)	-7.7	4.3	-	+4000	-	-	RNAV1

Path	Waypoint Identifier	Inbound Course °M(°T)	Magnetic Variation	Outbound Time (MIN)	Turn Direction	Minimum Altitude (FT)	Maximum Altitude (FT)	Speed (KIAS)	Navigation Specification
Hold	ISKUP	024 (016.5)	-8.0	1.0(-14000) 1.5(+14001)	R	7000	-	-230(-14000) -240(+14001)	RNAV1
Hold	KEYAH	062 (054.5)	-7.7	1.0(-14000) 1.5(+14001)	L	5000	-	-230(-14000) -240(+14001)	RNAV1
Hold	BANKU	133 (125.0)	-7.7	1.0(-14000) 1.5(+14001)	R	5000	-	-230(-14000) -240(+14001)	RNAV1

CHANGE : HLDG pattern established(ISKUP).

STANDARD ARRIVAL CHART-INSTRUMENT

RJFF / FUKUOKA

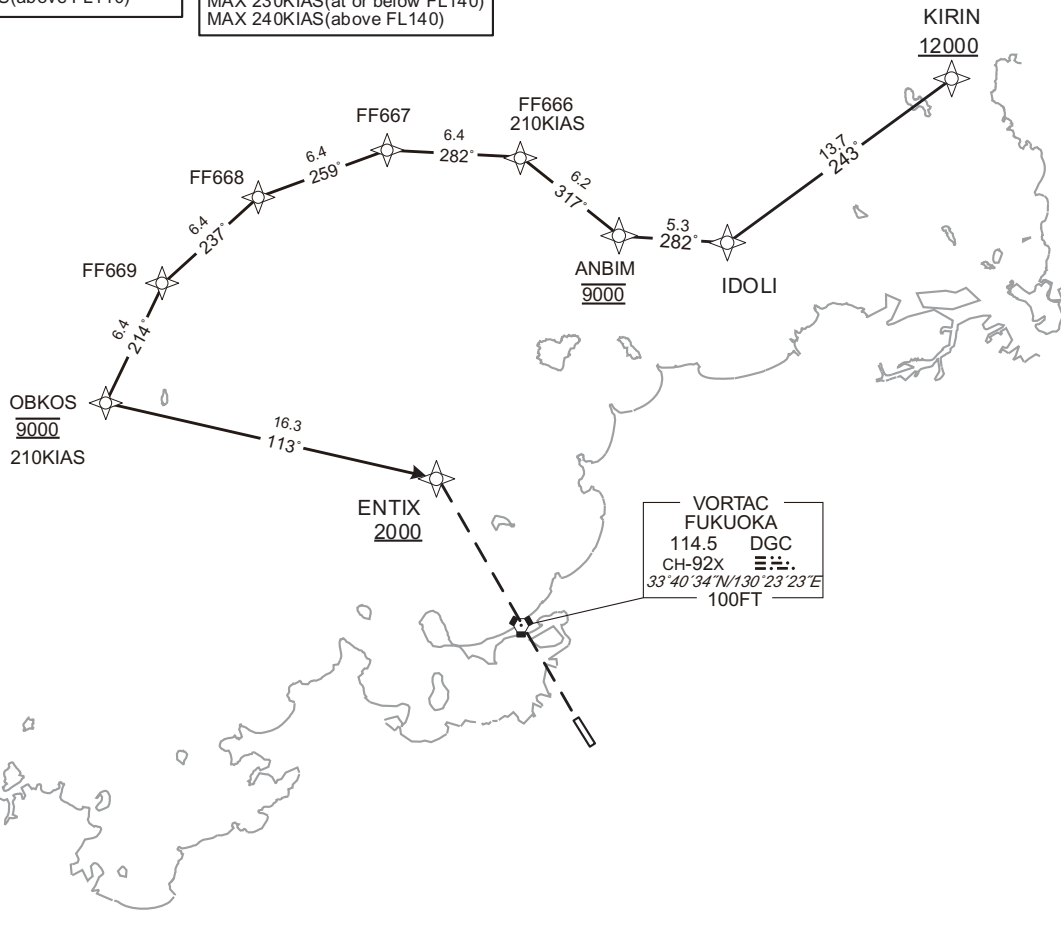
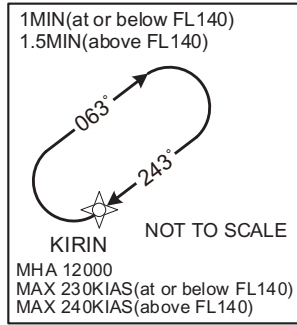
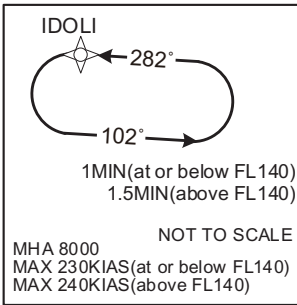
RNAV STAR RWY16

KIRIN ARRIVAL

RNAV 1

Note 1 ) DME/DME/IRU or GNSS required.  
2 ) RADAR service required.

VAR 8° W



VORTAC  
 FUKUOKA  
 114.5 DGC  
 CH-92X  
 33°40'34"N/130°23'23"E  
 100FT

CHANGE : Course FM ANBIM to ENTIX.

STANDARD ARRIVAL CHART-INSTRUMENT

RJFF / FUKUOKA

RNAV STAR RWY16

KIRIN ARRIVAL

From KIRIN at or above 12000FT, to IDOLI, to ANBIM at 9000FT, to FF666, to FF667, to FF668, to FF669, to OBKOS at 9000FT, to ENTIX at or above 2000FT.

Critical DME	-
DME GAP	-
Inappropriate Nav aids	See AD1.1.6.10.3. Inappropriate NAVAIDs for RNAV1

Serial Number	Path Descriptor	Waypoint Identifier	Fly Over	Course °M(°T)	Magnetic Variation	Distance (NM)	Turn Direction	Altitude (FT)	Speed (KIAS)	Vertical Angle	Navigation Specification
001	IF	KIRIN	-	-	-8.0	-	-	+12000	-	-	RNAV1
002	TF	IDOLI	-	243 (235.0)	-8.0	13.7	-	-	-	-	RNAV1
003	TF	ANBIM	-	282 (274.2)	-8.0	5.3	-	9000	-	-	RNAV1
004	TF	FF666	-	317 (308.8)	-8.0	6.2	-	-	210	-	RNAV1
005	TF	FF667	-	282 (274.1)	-8.0	6.4	-	-	-	-	RNAV1
006	TF	FF668	-	259 (251.4)	-8.0	6.4	-	-	-	-	RNAV1
007	TF	FF669	-	237 (228.8)	-8.0	6.4	-	-	-	-	RNAV1
008	TF	OBKOS	-	214 (206.3)	-8.0	6.4	-	9000	210	-	RNAV1
009	TF	ENTIX	-	113 (105.2)	-8.0	16.3	-	+2000	-	-	RNAV1

Path	Waypoint Identifier	Inbound Course °M(°T)	Magnetic Variation	Outbound Time (MIN)	Turn Direction	Minimum Altitude (FT)	Maximum Altitude (FT)	Speed (KIAS)	Navigation Specification
Hold	KIRIN	243 (235.1)	-8.0	1.0(-14000) 1.5(+14001)	R	12000	-	-230(-14000) -240(+14001)	RNAV1
Hold	IDOLI	282 (274.3)	-8.0	1.0(-14000) 1.5(+14001)	L	8000	-	-230(-14000) -240(+14001)	RNAV1

Waypoint Coordinates

Waypoint Identifier	Coordinates
KIRIN	340717.9N / 1304919.3E
IDOLI	335926.2N / 1303546.7E
ANBIM	335949.6N / 1302922.5E
FF666	340344.2N / 1302330.1E
FF667	340411.4N / 1301551.1E
FF668	340209.8N / 1300834.7E
FF669	335758.2N / 1300248.0E
OBKOS	335215.0N / 1295923.7E
ENTIX	334757.5N / 1301818.9E

CHANGE : Course FM ANBIM to ENTIX.

STANDARD ARRIVAL CHART-INSTRUMENT

RJFF / FUKUOKA

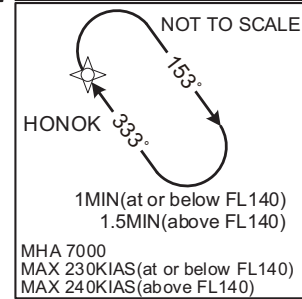
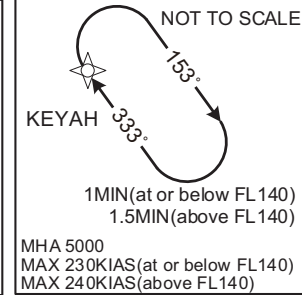
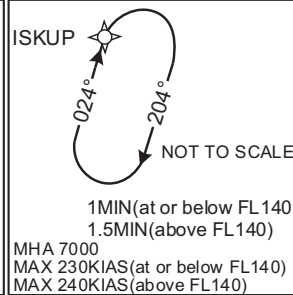
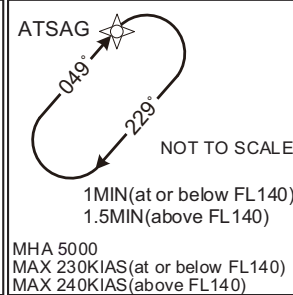
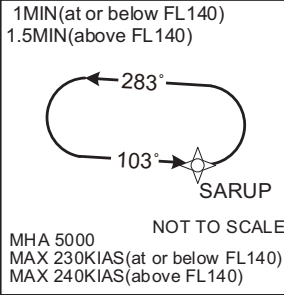
RNAV STAR RWY16

OSTEP ARRIVAL / ISKUP ARRIVAL / ATSAG ARRIVAL / SARUP ARRIVAL

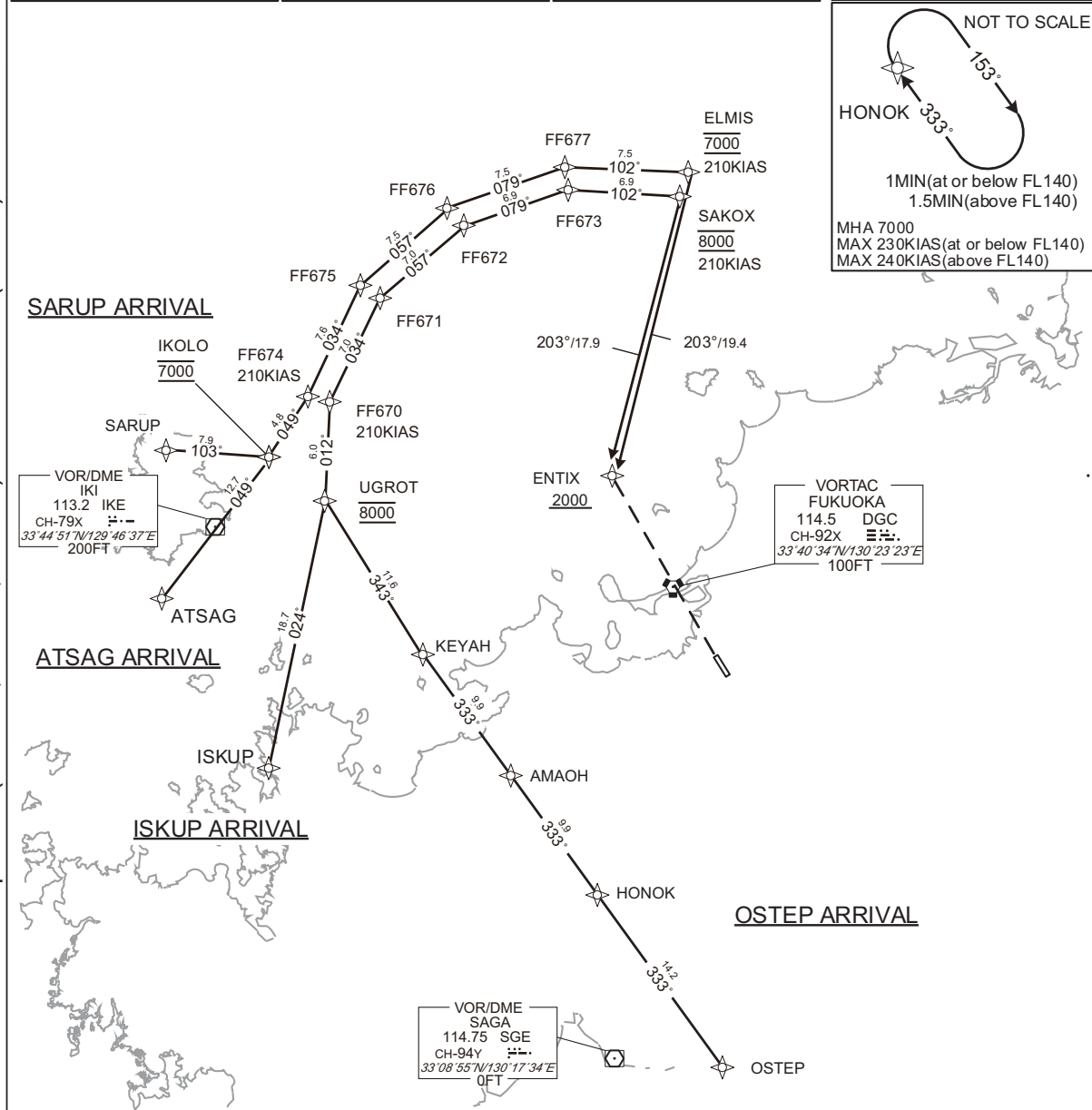
RNAV 1

Note 1 ) DME/DME/IRU or GNSS required.  
2 ) RADAR service required.

VAR 8° W



CHANGE : Course FM KEYAH to ENTIX, FM ISKUP to ENTIX, FM ATSAG to ENTIX, FM SARUP to ENTIX.  
HLDG pattern (SARUP,ATSAG,KEYAH). HLDG course(ISKUP).



STANDARD ARRIVAL CHART-INSTRUMENT

RJFF / FUKUOKA

RNAV STAR RWY16

OSTEP ARRIVAL

From OSTEP, to HONOK, to AMAOH, to KEYAH, to UGROT at 8000FT, to FF670, to FF671, to FF672, to FF673, to SAKOX at 8000FT, to ENTIX at or above 2000FT.

Critical DME	-
DME GAP	-
Inappropriate Nav aids	See AD1.1.6.10.3. Inappropriate NAVAIDs for RNAV1

Serial Number	Path Descriptor	Waypoint Identifier	Fly Over	Course °M(°T)	Magnetic Variation	Distance (NM)	Turn Direction	Altitude (FT)	Speed (KIAS)	Vertical Angle	Navigation Specification
001	IF	OSTEP	-	-	-8.0	-	-	-	-	-	RNAV1
002	TF	HONOK	-	333 (324.9)	-8.0	14.2	-	-	-	-	RNAV1
003	TF	AMAOH	-	333 (324.8)	-8.0	9.9	-	-	-	-	RNAV1
004	TF	KEYAH	-	333 (324.8)	-8.0	9.9	-	-	-	-	RNAV1
005	TF	UGROT	-	343 (334.6)	-8.0	11.6	-	8000	-	-	RNAV1
006	TF	FF670	-	012 (003.8)	-8.0	6.0	-	-	210	-	RNAV1
007	TF	FF671	-	034 (026.3)	-8.0	7.0	-	-	-	-	RNAV1
008	TF	FF672	-	057 (048.8)	-8.0	7.0	-	-	-	-	RNAV1
009	TF	FF673	-	079 (071.4)	-8.0	6.9	-	-	-	-	RNAV1
010	TF	SAKOX	-	102 (094.0)	-8.0	6.9	-	8000	210	-	RNAV1
011	TF	ENTIX	-	203 (195.3)	-8.0	17.9	-	+2000	-	-	RNAV1

Path	Waypoint Identifier	Inbound Course °M(°T)	Magnetic Variation	Outbound Time (MIN)	Turn Direction	Minimum Altitude (FT)	Maximum Altitude (FT)	Speed (KIAS)	Navigation Specification
Hold	HONOK	333 (324.9)	-8.0	1.0(-14000) 1.5(+14001)	R	7000	-	-230(-14000) -240(+14001)	RNAV1
Hold	KEYAH	333 (324.8)	-8.0	1.0(-14000) 1.5(+14001)	R	5000	-	-230(-14000) -240(+14001)	RNAV1

CHANGE : Course FM KEYAH to ENTIX. Minimum ALT(KEYAH). Critical DME deleted.

STANDARD ARRIVAL CHART-INSTRUMENT

RJFF / FUKUOKA

RNAV STAR RWY16

ISKUP ARRIVAL

From ISKUP, to UGROT, at 8000FT, to FF670, to FF671, to FF672, to FF673, to SAKOX, at 8000FT, to ENTIX at or above 2000FT.

Critical DME	-
DME GAP	-
Inappropriate Nav aids	See AD1.1.6.10.3. Inappropriate NAVAIDs for RNAV1

Serial Number	Path Descriptor	Waypoint Identifier	Fly Over	Course °M(°T)	Magnetic Variation	Distance (NM)	Turn Direction	Altitude (FT)	Speed (KIAS)	Vertical Angle	Navigation Specification
001	IF	ISKUP	-	-	-8.0	-	-	-	-	-	RNAV1
002	TF	UGROT	-	024 (016.5)	-8.0	18.7	-	8000	-	-	RNAV1
003	TF	FF670	-	012 (003.8)	-8.0	6.0	-	-	210	-	RNAV1
004	TF	FF671	-	034 (026.3)	-8.0	7.0	-	-	-	-	RNAV1
005	TF	FF672	-	057 (048.8)	-8.0	7.0	-	-	-	-	RNAV1
006	TF	FF673	-	079 (071.4)	-8.0	6.9	-	-	-	-	RNAV1
007	TF	SAKOX	-	102 (094.0)	-8.0	6.9	-	8000	210	-	RNAV1
008	TF	ENTIX	-	203 (195.3)	-8.0	17.9	-	+2000	-	-	RNAV1

Path	Waypoint Identifier	Inbound Course °M(°T)	Magnetic Variation	Outbound Time (MIN)	Turn Direction	Minimum Altitude (FT)	Maximum Altitude (FT)	Speed (KIAS)	Navigation Specification
Hold	ISKUP	024 (016.5)	-8.0	1.0(-14000) 1.5(+14001)	R	7000	-	-230(-14000) -240(+14001)	RNAV1

CHANGE : Course FM ISKUP to ENTIX. HLDG course(ISKUP). Critical DME deleted.

STANDARD ARRIVAL CHART-INSTRUMENT

RJFF / FUKUOKA

RNAV STAR RWY16

ATSAG ARRIVAL

From ATSAG, to IKOLO, at 7000FT, to FF674, to FF675, to FF676, to FF677, to ELMIS at 7000FT, to ENTIX at or above 2000FT.

Critical DME	-
DME GAP	-
Inappropriate Nav aids	See AD1.1.6.10.3. Inappropriate NAVAIDs for RNAV1

Serial Number	Path Descriptor	Waypoint Identifier	Fly Over	Course °M(°T)	Magnetic Variation	Distance (NM)	Turn Direction	Altitude (FT)	Speed (KIAS)	Vertical Angle	Navigation Specification
001	IF	ATSAG	-	-	-8.0	-	-	-	-	-	RNAV1
002	TF	IKOLO	-	049 (040.9)	-8.0	12.7	-	7000	-	-	RNAV1
003	TF	FF674	-	049 (041.0)	-8.0	4.8	-	-	210	-	RNAV1
004	TF	FF675	-	034 (026.2)	-8.0	7.6	-	-	-	-	RNAV1
005	TF	FF676	-	057 (048.7)	-8.0	7.5	-	-	-	-	RNAV1
006	TF	FF677	-	079 (071.4)	-8.0	7.5	-	-	-	-	RNAV1
007	TF	ELMIS	-	102 (094.0)	-8.0	7.5	-	7000	210	-	RNAV1
008	TF	ENTIX	-	203 (195.3)	-8.0	19.4	-	+2000	-	-	RNAV1

Path	Waypoint Identifier	Inbound Course °M(°T)	Magnetic Variation	Outbound Time (MIN)	Turn Direction	Minimum Altitude (FT)	Maximum Altitude (FT)	Speed (KIAS)	Navigation Specification
Hold	ATSAG	049 (040.9)	-8.0	1.0(-14000) 1.5(+14001)	R	5000	-	-230(-14000) -240(+14001)	RNAV1

CHANGE : Course FM ATSAG to ENTIX. HLDG pattern (ATSAG). Critical DME deleted.

STANDARD ARRIVAL CHART-INSTRUMENT

RJFF / FUKUOKA

RNAV STAR RWY16

SARUP ARRIVAL

From SARUP, to IKOLO at 7000FT, to FF674, to FF675, to FF676, to FF677, to ELMIS at 7000FT, to ENTIX at or above 2000FT.

Critical DME	-
DME GAP	-
Inappropriate Nav aids	See AD1.1.6.10.3. Inappropriate NAVAIDs for RNAV1

Serial Number	Path Descriptor	Waypoint Identifier	Fly Over	Course °M(°T)	Magnetic Variation	Distance (NM)	Turn Direction	Altitude (FT)	Speed (KIAS)	Vertical Angle	Navigation Specification
001	IF	SARUP	-	-	-8.0	-	-	-	-	-	RNAV1
002	TF	IKOLO	-	103 (095.0)	-8.0	7.9	-	7000	-	-	RNAV1
003	TF	FF674	-	049 (041.0)	-8.0	4.8	-	-	210	-	RNAV1
004	TF	FF675	-	034 (026.2)	-8.0	7.6	-	-	-	-	RNAV1
005	TF	FF676	-	057 (048.7)	-8.0	7.5	-	-	-	-	RNAV1
006	TF	FF677	-	079 (071.4)	-8.0	7.5	-	-	-	-	RNAV1
007	TF	ELMIS	-	102 (094.0)	-8.0	7.5	-	7000	210	-	RNAV1
008	TF	ENTIX	-	203 (195.3)	-8.0	19.4	-	+2000	-	-	RNAV1

Path	Waypoint Identifier	Inbound Course °M(°T)	Magnetic Variation	Outbound Time (MIN)	Turn Direction	Minimum Altitude (FT)	Maximum Altitude (FT)	Speed (KIAS)	Navigation Specification
Hold	SARUP	103 (094.9)	-8.0	1.0(-14000) 1.5(+14001)	L	5000	-	-230(-14000) -240(+14001)	RNAV1

Waypoint Coordinates

Waypoint Identifier	Coordinates	Waypoint Identifier	Coordinates
OSTEP	330831.8N / 1302632.1E	SAKOX	340511.2N / 1302358.8E
HONOK	332006.3N / 1301647.8E	ATSAG	333953.2N / 1294210.5E
AMAOH	332809.0N / 1300959.9E	SARUP	335008.4N / 1294244.7E
KEYAH	333611.4N / 1300310.7E	IKOLO	334926.8N / 1295209.4E
ISKUP	332847.3N / 1295046.6E	FF674	335302.0N / 1295555.0E
UGROT	334642.0N / 1295710.6E	FF675	335948.3N / 1295956.5E
FF670	335238.5N / 1295739.4E	FF676	340446.3N / 1300647.0E
FF671	335853.2N / 1300122.2E	FF677	340710.3N / 1301523.8E
FF672	340328.1N / 1300740.9E	ELMIS	340638.1N / 1302427.5E
FF673	340540.8N / 1301537.4E	ENTIX	334757.5N / 1301818.9E

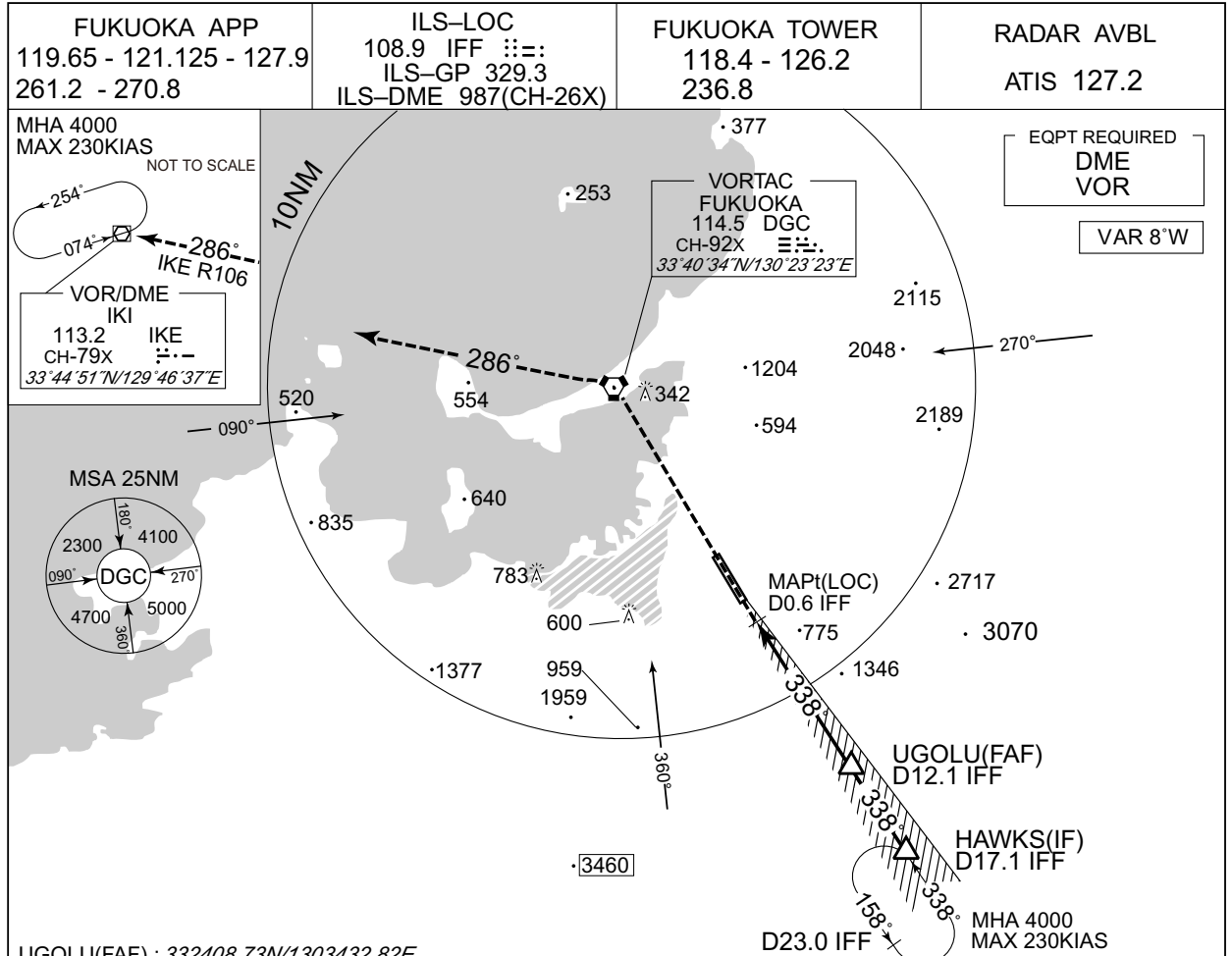
CHANGE : Course FM SARUP to ENTIX. Minimum ALT(SARUP). Critical DME deleted.



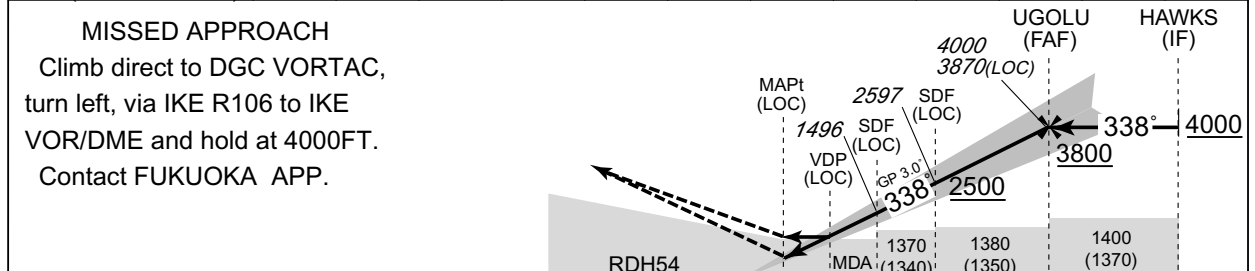
INSTRUMENT APPROACH CHART

RJFF / FUKUOKA

ILS or LOC RWY 34



NM to IFF	MAPt	3	4	5	6	7	8	9	10	11	12	FAF
ALT (3.0° APCH Path)	-	981	1299	1618	1936	2255	2573	2891	3210	3528	3847	3870



DME to IFF	0.2	0.6	2.2	4.6	8.1	12.1	17.1
NM to THR	0	0.5	2.0	4.4	7.9	11.9	16.9

Missed APCH climb gradient MNM 5.0%

CAT	THR elev. 32		AD elev. 30			
	CAT I		LOC		CIRCLING	
	DA(H)	RVR/CMV	MDA(H)	RVR/CMV	MDA(H)	VIS
A	232 (200)	550	680 (650)	1200	830 (800)	1600
B				1400		
C				1020 (990)	2400	
D				1800	1030 (1000)	3200

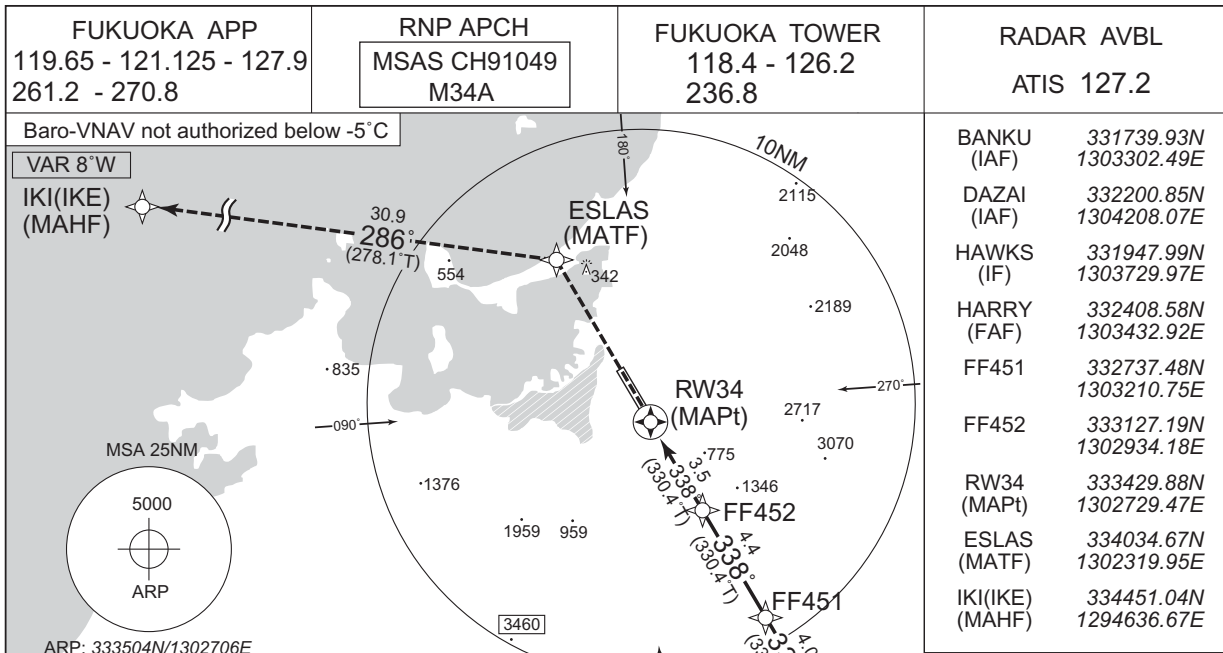
MINIMA with Missed APCH climb gradient of 2.5% are not established.  
Circling to WEST side of RWY only.

CHANGE : MSA(BTN 180° and 270°).

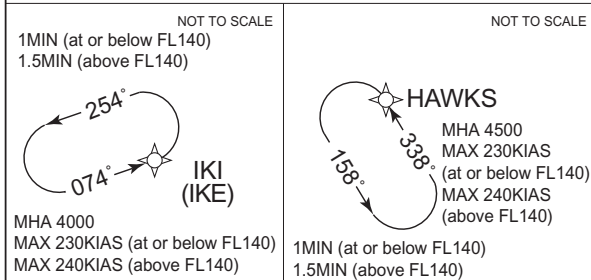
INSTRUMENT APPROACH CHART

RJFF / FUKUOKA

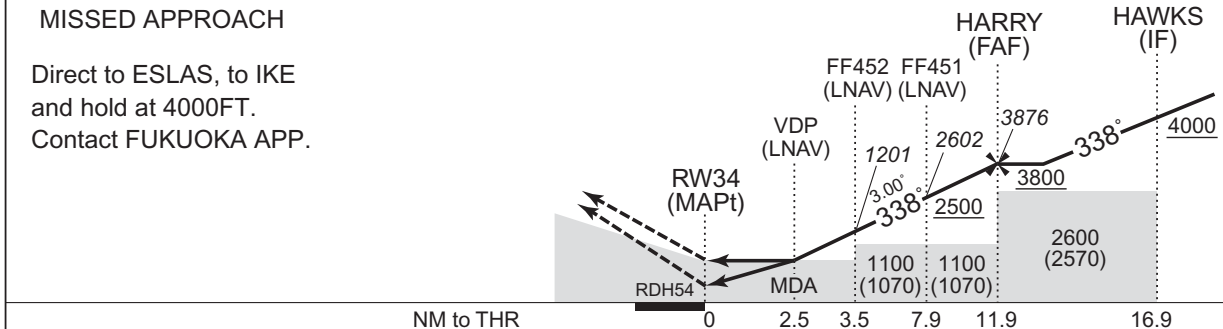
RNP RWY34



RADAR AVBL	
ATIS 127.2	
BANKU (IAF)	331739.93N 1303302.49E
DAZAI (IAF)	332200.85N 1304208.07E
HAWKS (IF)	331947.99N 1303729.97E
HARRY (FAF)	332408.58N 1303432.92E
FF451	332737.48N 1303210.75E
FF452	333127.19N 1302934.18E
RW34 (MAPt)	333429.88N 1302729.47E
ESLAS (MATF)	334034.67N 1302319.95E
IKI (IKE) (MAHF)	334451.04N 1294636.67E



NM to Next Fix	MAPt	3	4	5	6	7	8	9	10	11	FAF
ALT (3.0° APCH Path)	-	1042	1360	1679	1997	2315	2634	2952	3271	3589	3876



MISSED APCH climb gradient MNM 5.0%

CAT	MINIMA		THR elev. 32		AD elev. 30		CIRCLING	
	LPV		LNAV/VNAV		LNAV		CIRCLING	
	DA(H)	RVR/CMV	DA(H)	RVR/CMV	MDA(H)	RVR/CMV	MDA(H)	VIS
A	343 (311)	900	820 (788)	1200	820 (790)	1200	830 (800)	1600
B	353 (321)	1000		1400		1400		
C	363 (331)	1400		1800		1800	1020 (990)	2400
D	372 (340)			1800		1800	1030 (1000)	3200

MINIMA with Missed APCH climb gradient of 2.5% are not established.  
Circling to WEST side of RWY only.

CHANGE : MINIMA for LPV.

INSTRUMENT APPROACH CHART

RJFF / FUKUOKA

RNP RWY34

**FAS DATA BLOCK**

Operation type	0	LTP/FTP ellipsoidal height	+00424
SBAS service provider identifier	2	FPAP latitude	333548.8630N
Airport identifier	RJFF	FPAP longitude	1302635.4830E
Runway	34	Threshold crossing height	00016.5
Approach performance designator	0	TCH units selector	1
Route indicator		Glide path angle	03.00
Reference path data selector	0	Course width at threshold	105.00
Reference path ID	M34A	∠ length offset	0000
LTP/FTP latitude	333429.8705N	HAL	40.0
LTP/FTP longitude	1302729.4540E	VAL	50.0
CRC remainder	9DA9C0E7		

**Required additional data**

LTP/FTP orthometric height	9.8
----------------------------	-----

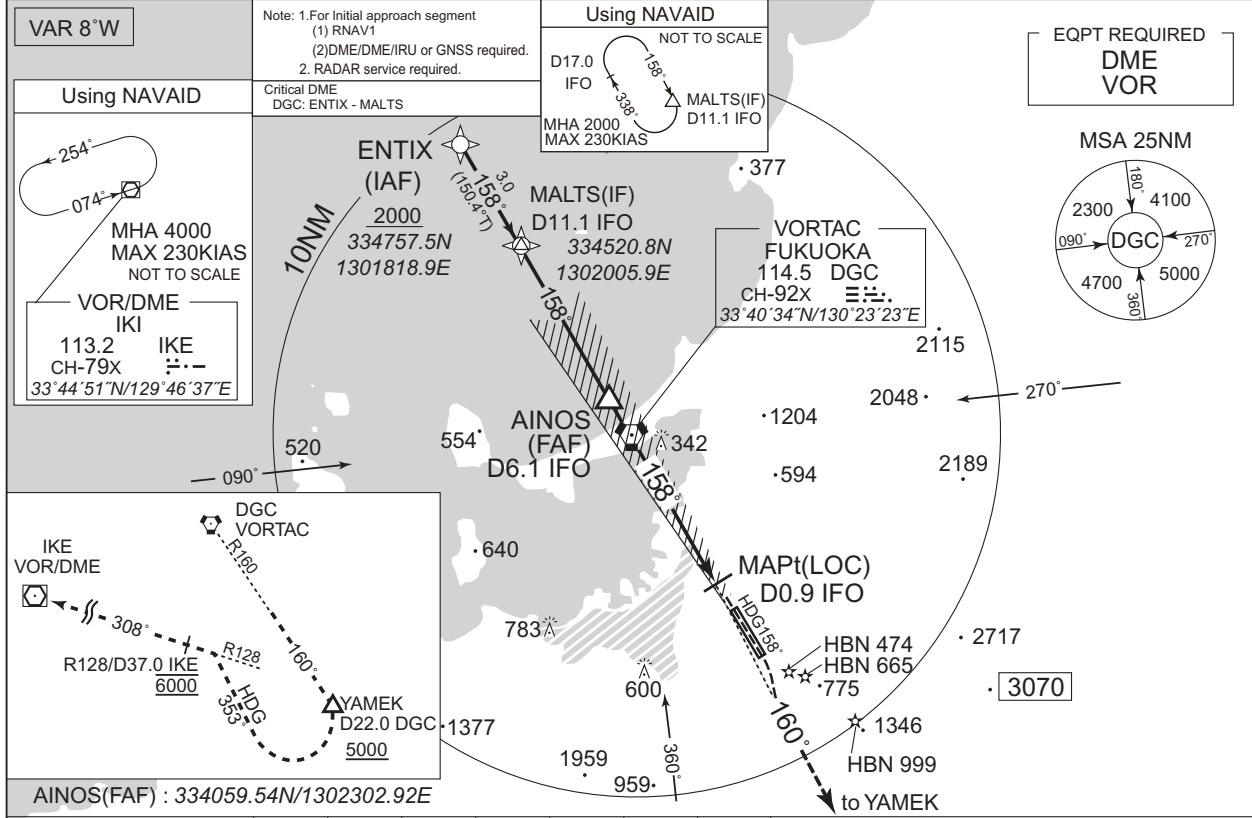
CHANGE : FAS DATA BLOCK and Required additional data established.

INSTRUMENT APPROACH CHART

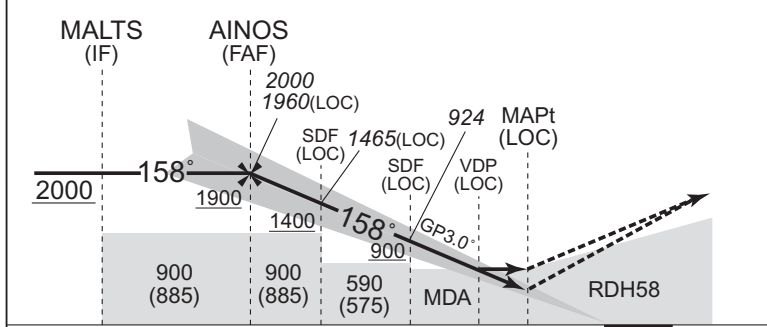
RJFF / FUKUOKA

ILS or LOC RWY16

FUKUOKA APP 119.65 - 121.125 - 127.9 261.2 - 270.8	ILS-LOC 111.7 IFO $\equiv \equiv \equiv$ ILS-GP 333.5 ILS-DME 1015(CH-54X)	FUKUOKA TOWER 118.4 - 126.2 236.8	RADAR AVBL ATIS 127.2
--	---	---	--------------------------



NM to IFO	FAF	6	5	4	3	2	MAPt
ALT (3.0° APCH Path)	1960	1919	1600	1282	964	645	-



**MISSED APPROACH**  
Climb to 1600FT on HDG158°, to 6000FT via DGC R160 to YAMEK, turn right HDG353° to intercept and proceed via IKE R128 to IKE VOR/DME and hold. Cross YAMEK at or above 5000FT, cross IKE R128/37.0DME at 6000FT. Contact FUKUOKA APP.  
Timing not authorized for defining the MAPt.

11.1	6.1	4.6	2.9	1.8	0.9	0.2	DME to IFO
11.0	6.0	4.4	2.7	1.6	0.7	0	NM to THR

Missed APCH climb gradient MNM 5.0%						
MINIMA		THR elev. 15		AD elev. 30		
CAT	CAT I		LOC		CIRCLING	
	DA(H)	RVR/CMV	MDA(H)	RVR/CMV	MDA(H)	VIS
A	215 (200)	550	550 (535)	1000	830 (800)	1600
B				1200		
C				1020 (990)	2400	
D				1600	1030 (1000)	3200

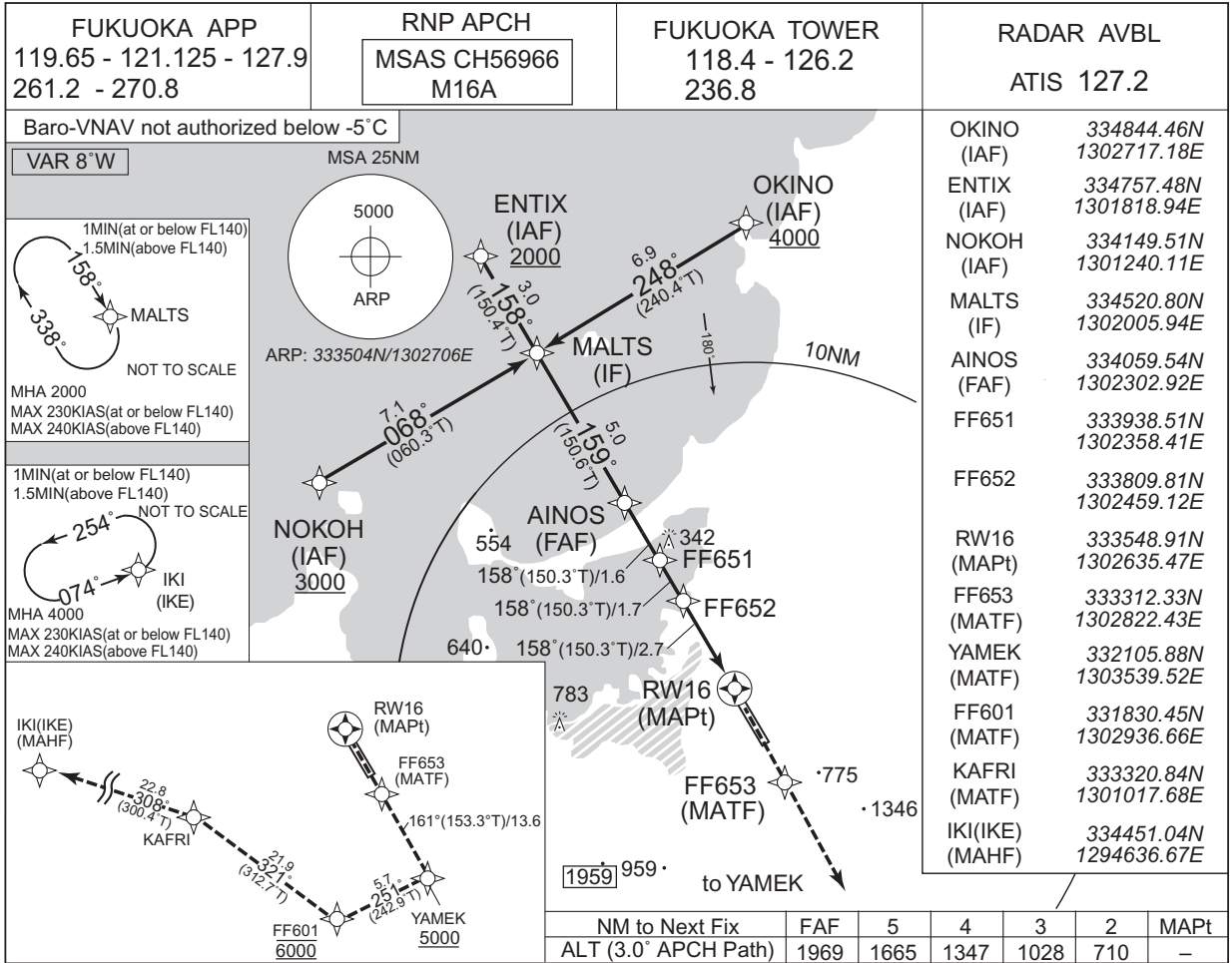
MINIMA with Missed APCH climb gradient of 2.5% are not established.  
Circling to WEST side of RWY only.

CHANGE : MSA(BTN 180° and 270°)

INSTRUMENT APPROACH CHART

RJFF / FUKUOKA

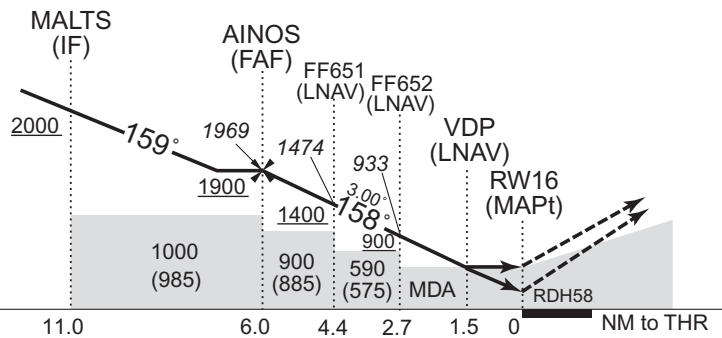
RNP RWY16



CHANGE : MINIMA for LPV, DA(H) for LNAV/VNAV, MDA(H) for LNAV, NM to THR.

MISSED APPROACH

Direct to FF653, to YAMEK at or above 5000FT, to FF601 at 6000FT, to KAFRI, to IKE and hold at 6000FT. Contact FUKUOKA APP.



Missed APCH climb gradient MNM 5.0%

MINIMA		THR elev. 15		AD elev. 30				
CAT	LPV		LNAV/VNAV		LNAV		CIRCLING	
	DA(H)	RVR/CMV	DA(H)	RVR/CMV	MDA(H)	RVR/CMV	MDA(H)	VIS
A	330 (315)	900	510 (495)	1000	510 (495)	1000	830 (800)	1600
B	340 (325)	1000		1200		1200		
C	349 (334)	1400		1600		1600	1020 (990)	2400
D	359 (344)						1030 (1000)	3200

MINIMA with Missed APCH climb gradient of 2.5% are not established. Circling to WEST side of RWY only.

## INSTRUMENT APPROACH CHART

RJFF / FUKUOKA

RNP RWY16

**FAS DATA BLOCK**

Operation type	0	LTP/FTP ellipsoidal height	+00371
SBAS service provider identifier	2	FPAP latitude	333429.8705N
Airport identifier	RJFF	FPAP longitude	1302729.4540E
Runway	16	Threshold crossing height	00017.7
Approach performance designator	0	TCH units selector	1
Route indicator		Glide path angle	03.00
Reference path data selector	0	Course width at threshold	105.00
Reference path ID	M16A	∠ length offset	0000
LTP/FTP latitude	333548.8630N	HAL	40.0
LTP/FTP longitude	1302635.4830E	VAL	50.0
CRC remainder	AA995500		

**Required additional data**

LTP/FTP orthometric height	4.5
----------------------------	-----

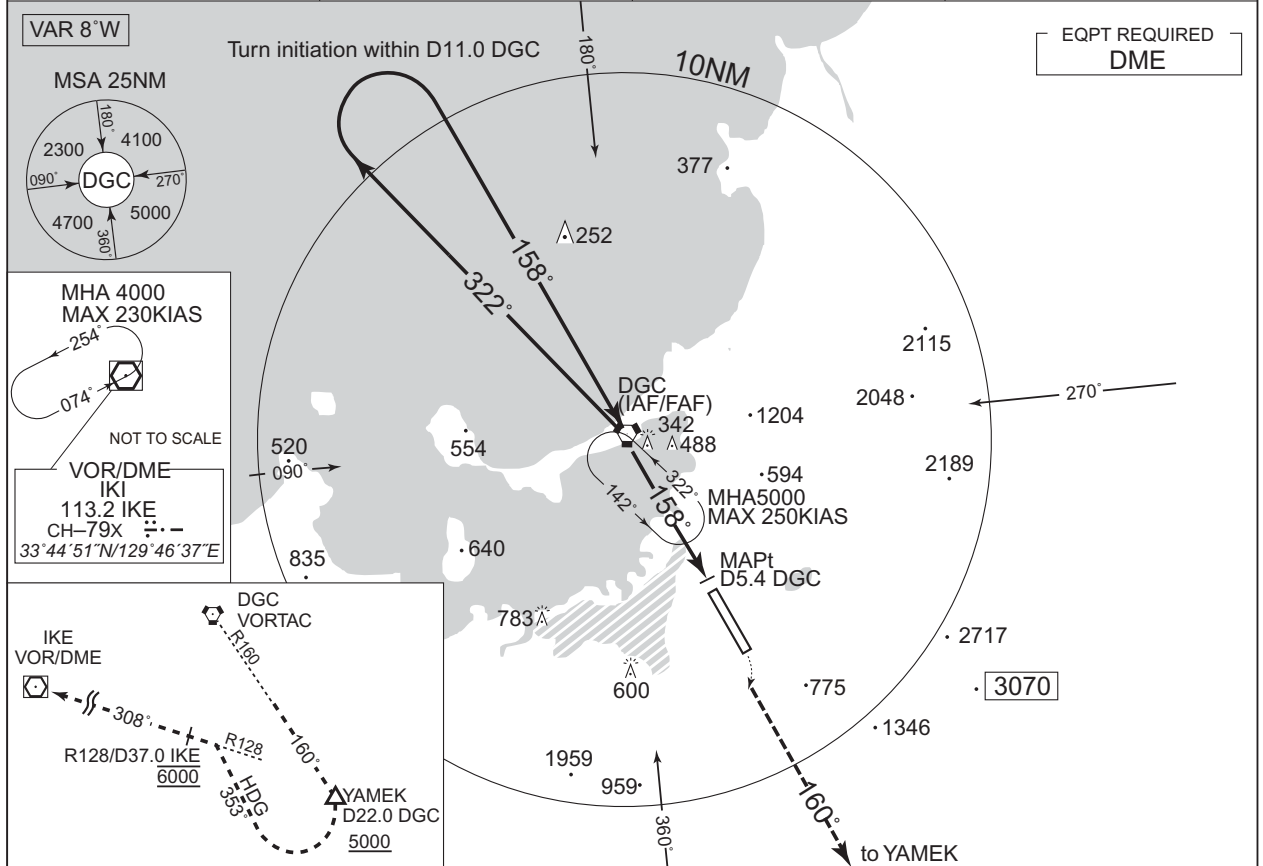
CHANGE : FAS DATA BLOCK and Required additional data established.

INSTRUMENT APPROACH CHART

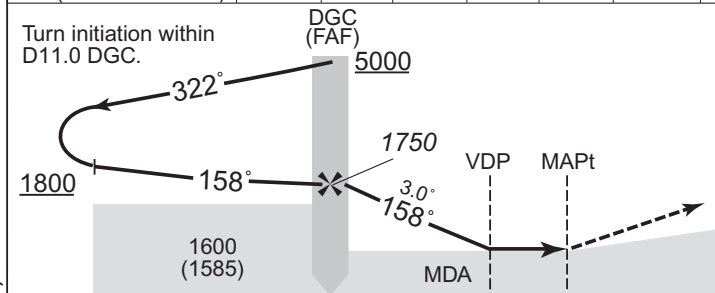
RJFF / FUKUOKA

VOR RWY16

FUKUOKA APP 119.65 - 121.125 - 127.9 261.2 - 270.8	FUKUOKA VORTAC 114.5 DGC CH-92X ㊦ 33°40'34"N / 130°23'23"E	FUKUOKA TOWER 118.4 - 126.2 236.8	RADAR AVBL ATIS 127.2
--	---	---	--------------------------



NM to RWY16	FAF	5	4	3	2	MAPt
ALT(3.0° APCH Path)	1750	1656	1338	1019	701	-



**MISSED APPROACH**  
Climb to 6000FT, via DGC R160 to YAMEK, turn right HDG353° to intercept and proceed via IKE R128 to IKE VOR/DME and hold. Cross YAMEK at or above 5000FT. Cross IKE R128/37.0DME at 6000FT. Contact FUKUOKA APP.  
Timing not authorized for defining the MAPt.

DME from DGC	0	3.4	5.4
NM to THR	5.5	2.0	0.1 0

Missed APCH climb gradient MNM 4.3%

CAT	MINIMA		THR elev. 15		AD elev. 30	
	MDA(H)	RVR/CMV	MDA(H)	VIS	CIRCLING	
A	680 (665)	1200	830 (800)	1600		
B		1400				
C			1020 (990)	2400		
D		1800	1030 (1000)	3200		

Circling to WEST side of RWY only.  
MINIMA with Missed APCH climb gradient of 2.5% are not established.

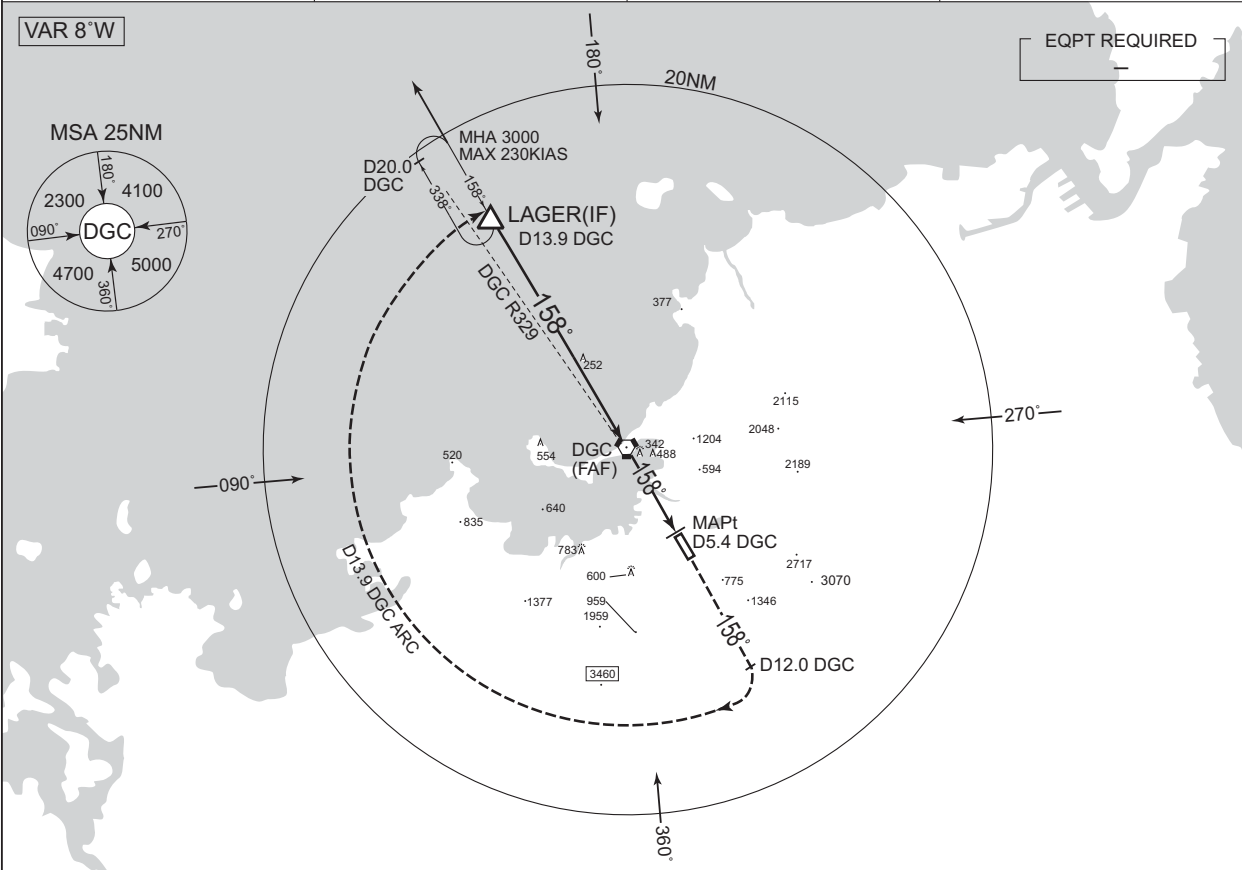
CHANGE : MSA(BTN 180° and 270°).

INSTRUMENT APPROACH CHART

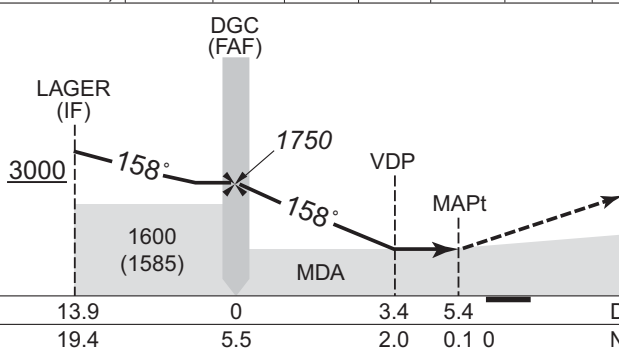
RJFF / FUKUOKA

TACAN RWY16

FUKUOKA APP 119.65 - 121.125 - 127.9 261.2 - 270.8	FUKUOKA VORTAC 114.5 DGC CH-92X $\equiv \text{---}$ 33°40'34"N / 130°23'23"E	FUKUOKA TOWER 118.4 - 126.2 236.8	RADAR AVBL ATIS 127.2
--	---	---	--------------------------



NM to RWY16	FAF	5	4	3	2	MAPt
ALT(3.0° APCH Path)	1750	1656	1338	1019	701	-



**MISSED APPROACH**  
Climb to 5000FT via DGC R158 to DGC 12.0DME, turn right, via DGC 13.9DME clockwise ARC to LAGER and hold.  
Contact FUKUOKA APP.

Timing not authorized for defining the MAPt.

Missed APCH climb gradient MNM 5.0%

MINIMA		THR elev. 15	AD elev. 30	
CAT	CIRCLING		MDA(H)	VIS
	MDA(H)	RVR/CMV		
A	680 (665)	1200	830 (800)	1600
B		1400		
C			1020 (990)	2400
D		1800	1030 (1000)	3200

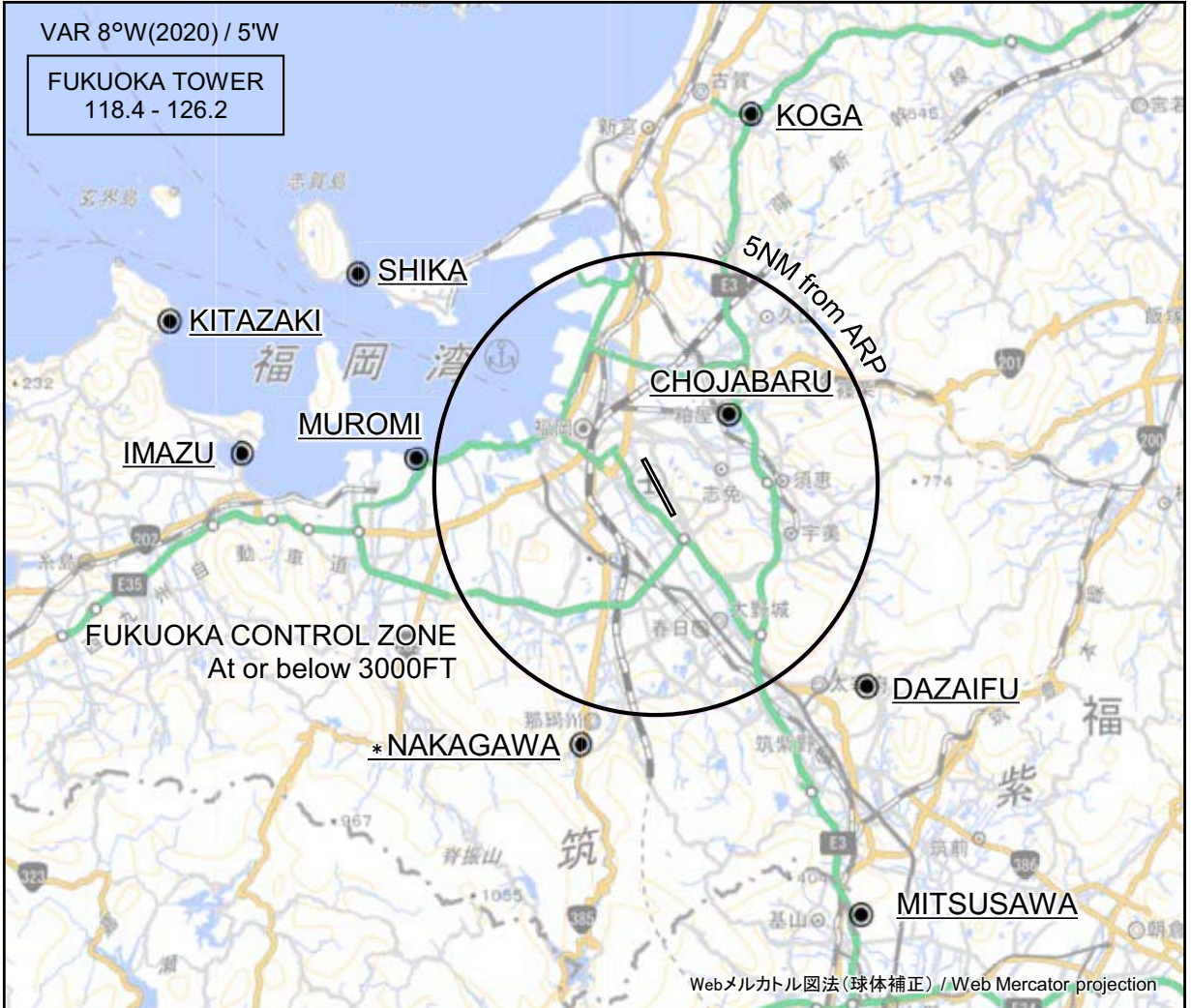
Circling to WEST side of RWY only.  
MINIMA with Missed APCH climb gradient of 2.5% are not established.

CHANGE : MSA(BTN 180° and 270°).



RJFF / FUKUOKA

Visual REP

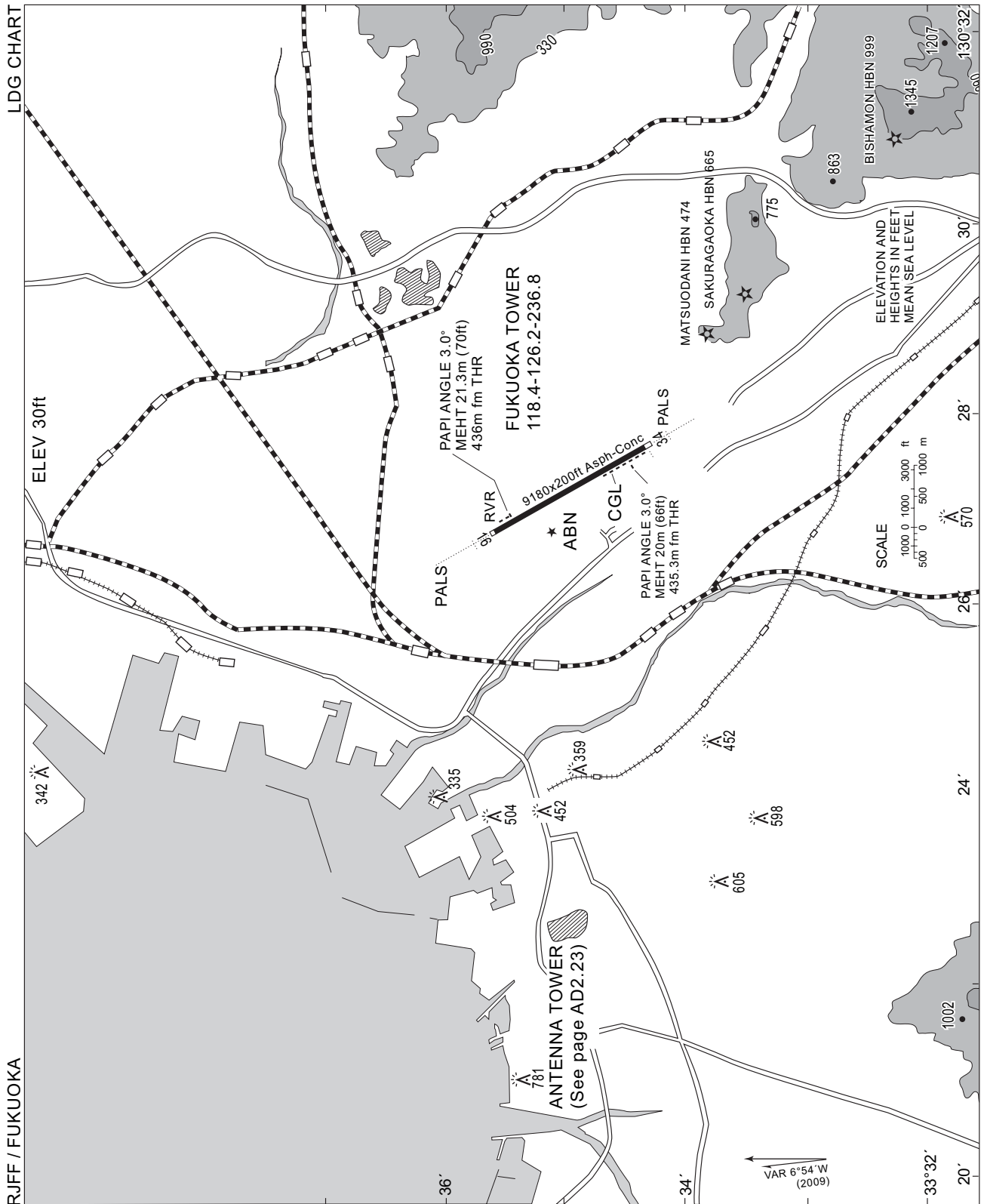


※図中に標高を示す数字がある場合、単位はメートル(m)である。The unit of measurement used to express elevation is meter(m).

CHANGE : Map updated. BRG/DIST from ARP.

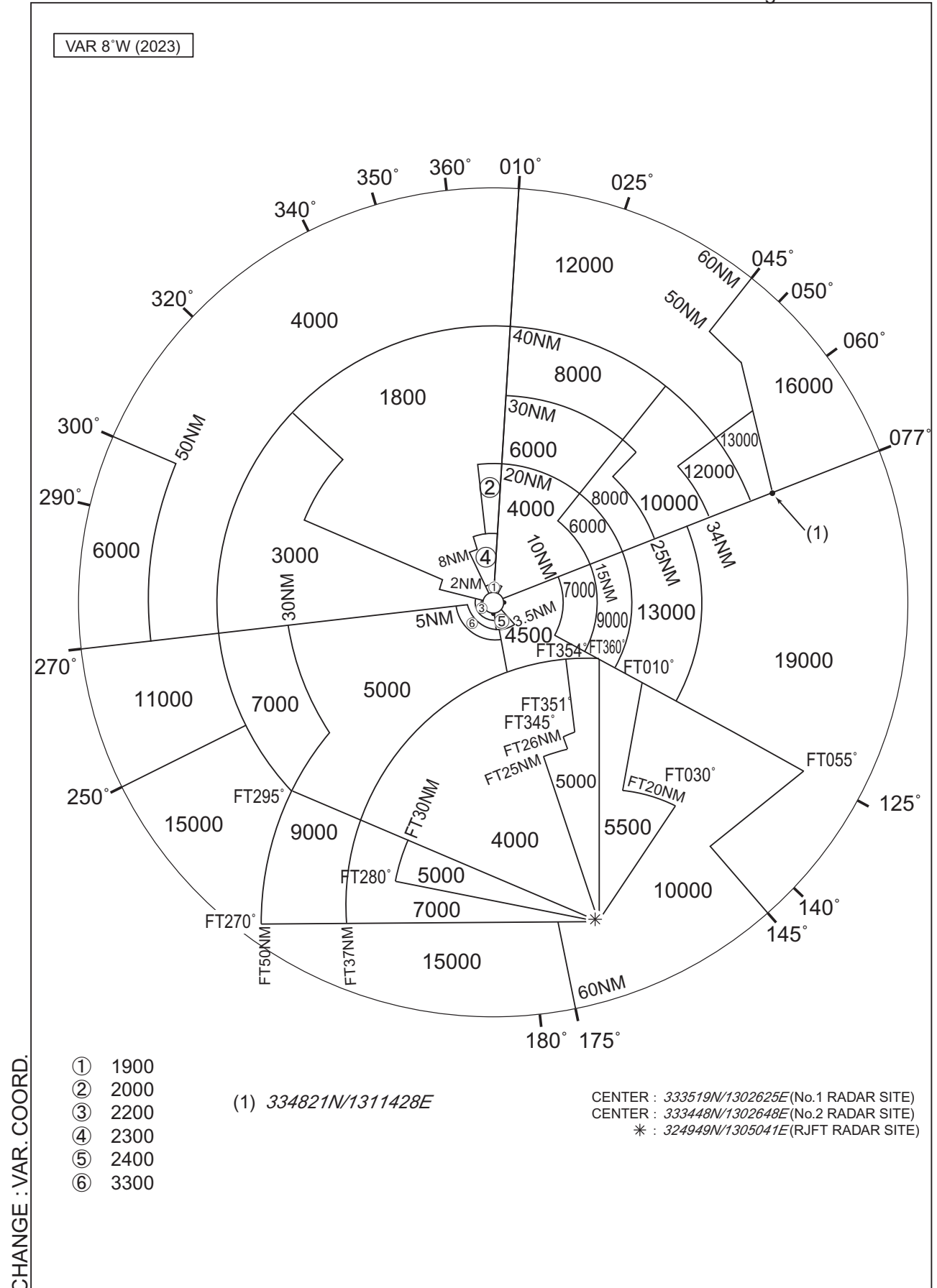
Call sign	BRG / DIST from ARP	Remarks
古賀 Koga	014°T / 8.4NM	高速道路インターチェンジ Interchange
長者原 Chojabaru	046°T / 2.3NM	ドーム型建造物 Dome
太宰府 Dazaifu	133°T / 6.4NM	ゴルフ場 Golf Course
三沢 Mitsusawa	153°T / 10.4NM	ゴルフ場 Golf Course
*那珂川 Nakagawa	197°T / 5.8NM	松尾橋 Bridge
室見 Muromi	277°T / 5.4NM	室見川河口 River mouth
今津 Imazu	275°T / 9.4NM	今津橋 Bridge
志賀 Shika	305°T / 8.2NM	志賀島橋 Bridge
北崎 Kitazaki	289°T / 11.5NM	漁港 Harbor

\*ヘリコプター用 Use For Helicopter



RJFF / FUKUOKA

Minimum Vectoring Altitude CHART



**INTENTIONALLY LEFT BLANK**