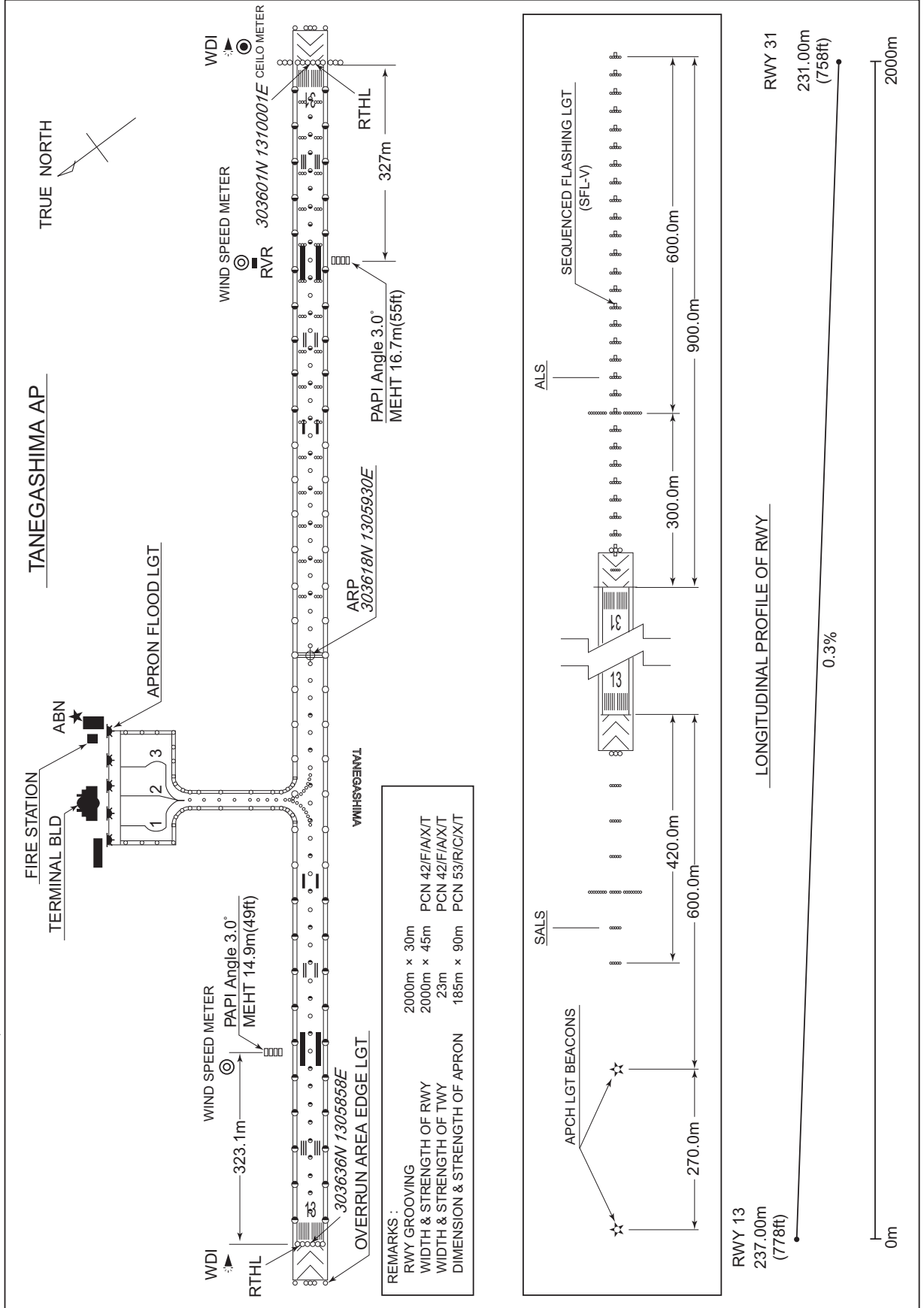


RJFG / TANEGASHIMA

AD CHART

CHANGE : CEILO METER, WIND SPEED METER added.



INTENTIONALLY LEFT BLANK

STANDARD DEPARTURE CHART - INSTRUMENT

RJFG / TANEGASHIMA

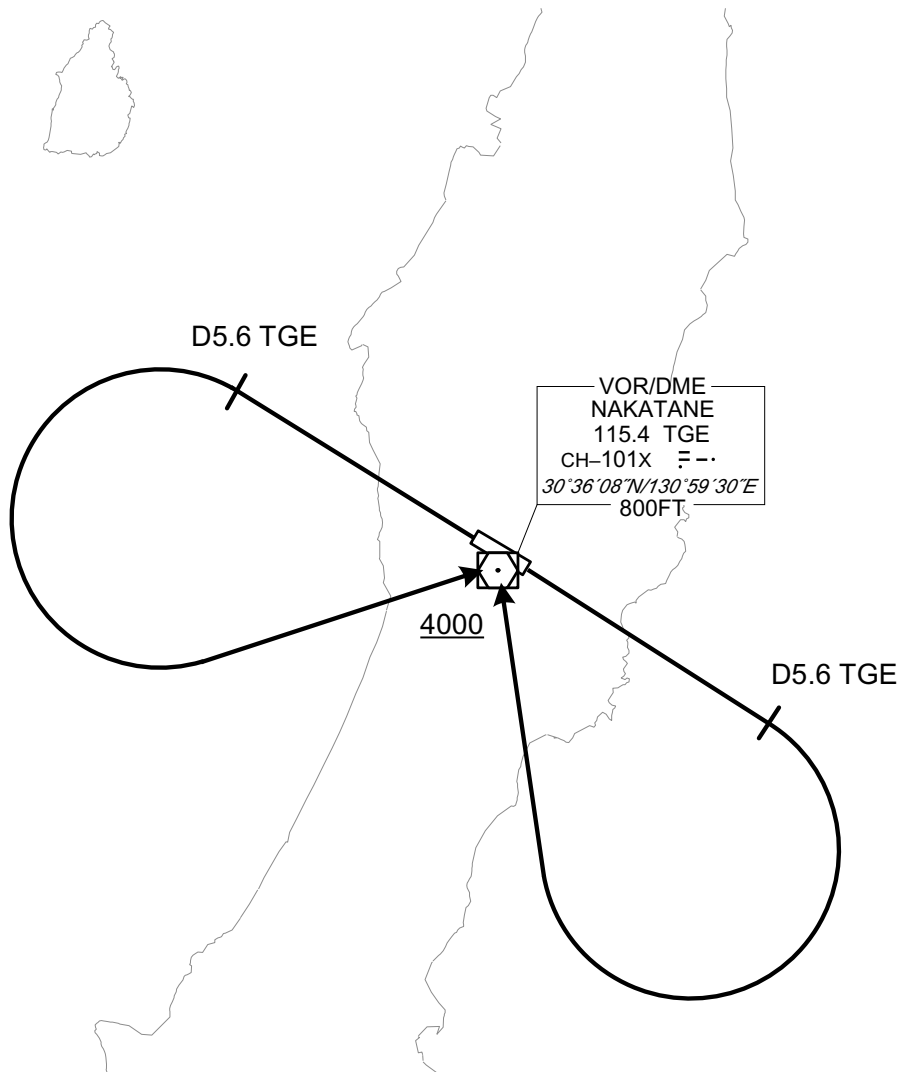
SID

CHANGE : PROC renamed. QUEEN TWO DEPARTURE, KINKO TWO DEPARTURE abolished. PROC course.

TANEGASHIMA REVERSAL THREE DEPARTURE

RWY 13 : Climb RWY HDG to TGE 5.6DME, turn right,...
RWY 31 : Climb RWY HDG to TGE 5.6DME, turn left,...

... direct to TGE VOR/DME.
Cross TGE VOR/DME at or above 4000FT.



STANDARD DEPARTURE CHART -INSTRUMENT

RJFG / TANEGASHIMA

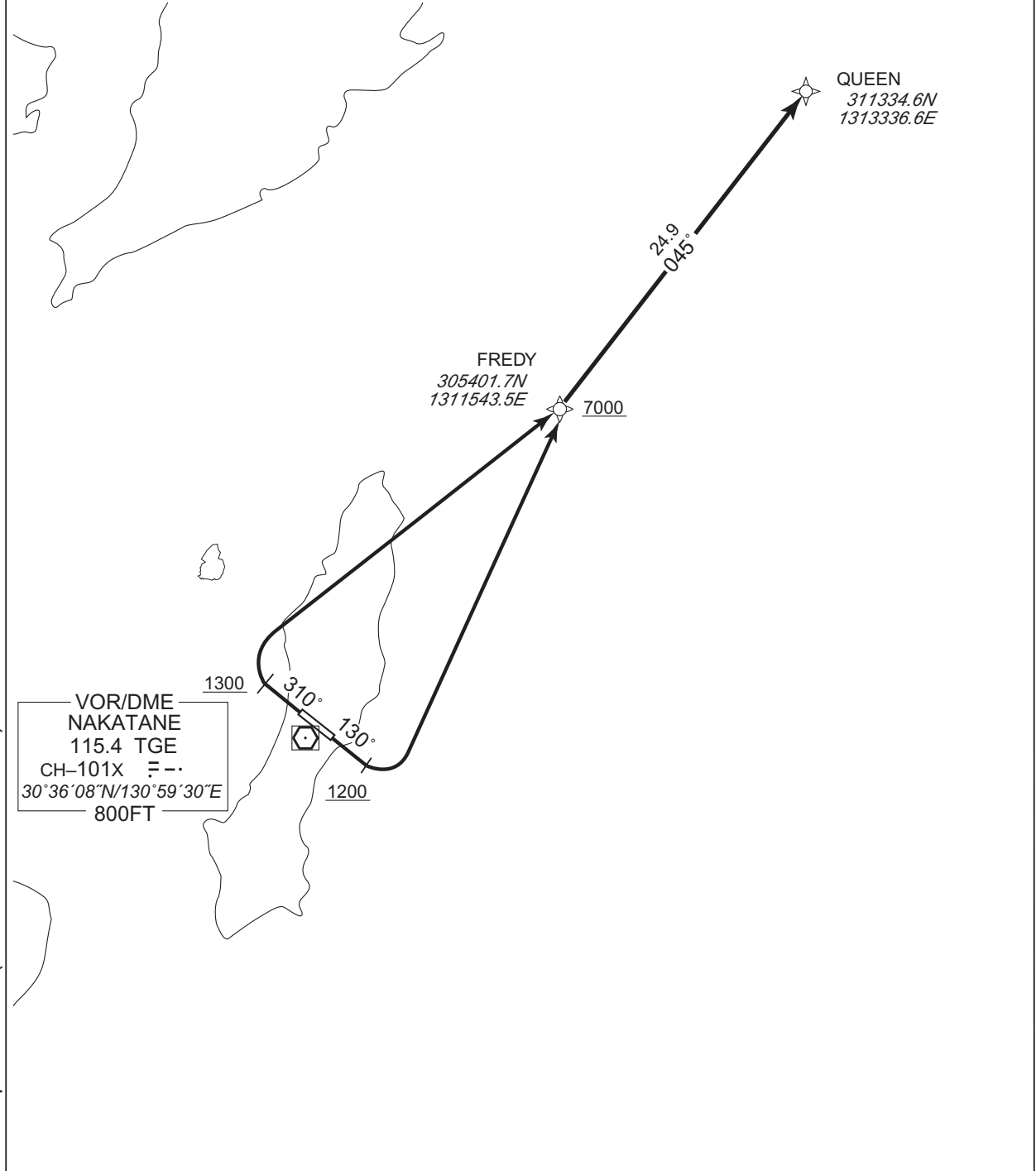
RNAV SID

FREDY TWO DEPARTURE

RNP1

Note GNSS required.

VAR 7°W



CHANGE : Navigation Specification(Basic RNP1 → RNP1).

RWY13 : Climb on HDG 130° at or above 1200FT, turn left direct to FREDY at or above 7000FT, to QUEEN.
 RWY31 : Climb on HDG 310° at or above 1300FT, turn right direct to FREDY at or above 7000FT, to QUEEN.

STANDARD DEPARTURE CHART -INSTRUMENT

RJFG / TANEGASHIMA

RNAV SID

FREDY TWO DEPARTURE

RWY13

Serial Number	Path Descriptor	Waypoint Identifier	Fly Over	Course °M(°T)	Magnetic Variation	Distance (NM)	Turn Direction	Altitude (FT)	Speed (KIAS)	Vertical Angle	Navigation Specification
001	VA	-	-	130 (123.0)	-7.0	-	-	+1200	-	-	RNP1
002	DF	FREDY	-	-	-7.0	-	L	+7000	-	-	RNP1
003	TF	QUEEN	-	045 (038.0)	-7.0	24.9	-	-	-	-	RNP1

RWY31

Serial Number	Path Descriptor	Waypoint Identifier	Fly Over	Course °M(°T)	Magnetic Variation	Distance (NM)	Turn Direction	Altitude (FT)	Speed (KIAS)	Vertical Angle	Navigation Specification
001	VA	-	-	310 (303.0)	-7.0	-	-	+1300	-	-	RNP1
002	DF	FREDY	-	-	-7.0	-	R	+7000	-	-	RNP1
003	TF	QUEEN	-	045 (038.0)	-7.0	24.9	-	-	-	-	RNP1

CHANGE : Navigation Specification(Basic RNP1 → RNP1).

STANDARD DEPARTURE CHART -INSTRUMENT

RJFG / TANEGASHIMA

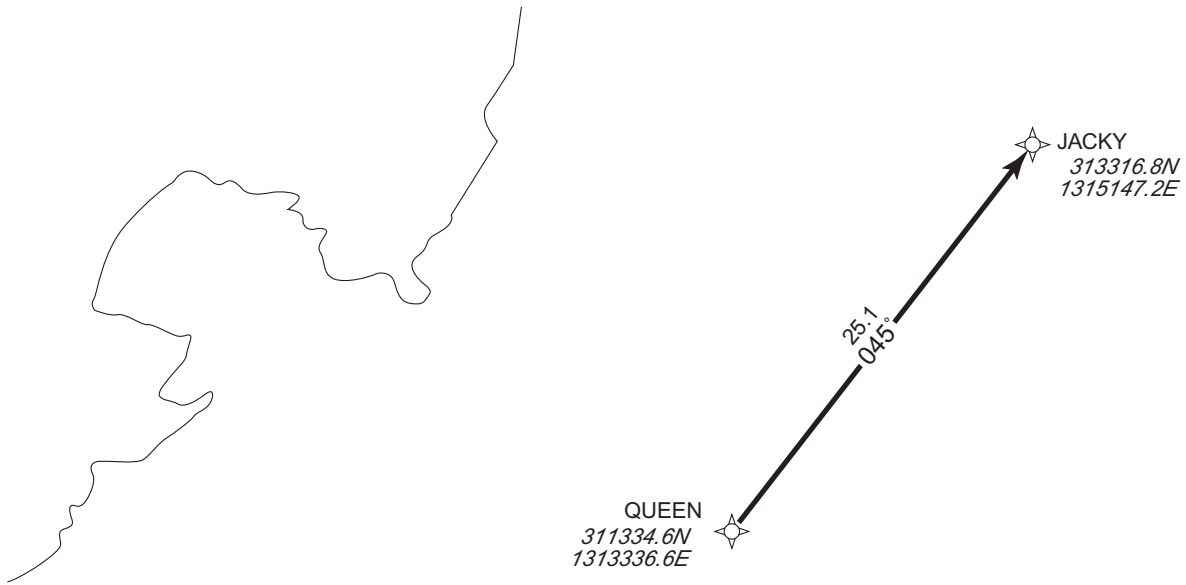
RNAV TRANSITION

JACKY TRANSITION

RNP1

Note GNSS required.

VAR 7°W



From QUEEN to JACKY.

Serial Number	Path Descriptor	Waypoint Identifier	Fly Over	Course °M(°T)	Magnetic Variation	Distance (NM)	Turn Direction	Altitude (FT)	Speed (KIAS)	Vertical Angle	Navigation Specification
001	IF	QUEEN	—	—	-7.0	—	—	—	—	—	RNP1
002	TF	JACKY	—	045 (038.1)	-7.0	25.1	—	—	—	—	RNP1

CHANGE : Navigation Specification(Basic RNP1 → RNP1).

STANDARD DEPARTURE CHART -INSTRUMENT

RJFG / TANEGASHIMA

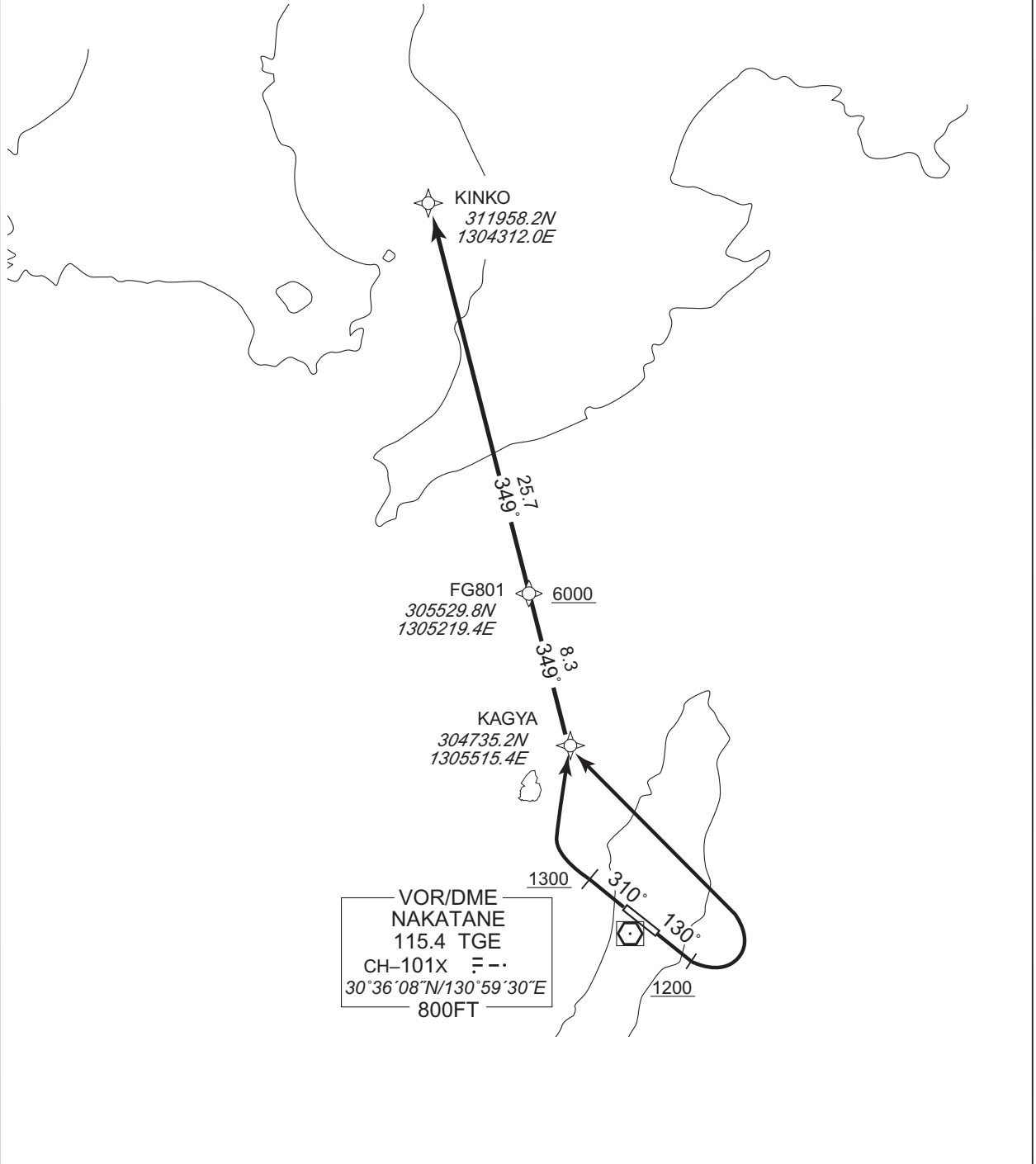
RNAV SID

KAGYA TWO DEPARTURE

RNP1

Note GNSS required.

VAR 7°W



CHANGE : Navigation Specification(Basic RNP1 → RNP1).

RWY13 : Climb on HDG 130° at or above 1200FT, turn left direct to KAGYA, to FG801 at or above 6000FT, to KINKO.

RWY31 : Climb on HDG 310° at or above 1300FT, turn right direct to KAGYA, to FG801 at or above 6000FT, to KINKO.

STANDARD DEPARTURE CHART -INSTRUMENT

RJFG / TANEGASHIMA

RNAV SID

KAGYA TWO DEPARTURE

RWY13

Serial Number	Path Descriptor	Waypoint Identifier	Fly Over	Course °M(°T)	Magnetic Variation	Distance (NM)	Turn Direction	Altitude (FT)	Speed (KIAS)	Vertical Angle	Navigation Specification
001	VA	-	-	130 (123.0)	-7.0	-	-	+1200	-	-	RNP1
002	DF	KAGYA	-	-	-7.0	-	L	-	-	-	RNP1
003	TF	FG801	-	349 (342.4)	-7.0	8.3	-	+6000	-	-	RNP1
004	TF	KINKO	-	349 (342.3)	-7.0	25.7	-	-	-	-	RNP1

RWY31

Serial Number	Path Descriptor	Waypoint Identifier	Fly Over	Course °M(°T)	Magnetic Variation	Distance (NM)	Turn Direction	Altitude (FT)	Speed (KIAS)	Vertical Angle	Navigation Specification
001	VA	-	-	310 (303.0)	-7.0	-	-	+1300	-	-	RNP1
002	DF	KAGYA	-	-	-7.0	-	R	-	-	-	RNP1
003	TF	FG801	-	349 (342.4)	-7.0	8.3	-	+6000	-	-	RNP1
004	TF	KINKO	-	349 (342.3)	-7.0	25.7	-	-	-	-	RNP1

CHANGE : Navigation Specification(Basic RNP1 → RNP1).

STANDARD ARRIVAL CHART - INSTRUMENT

RJFG / TANEGASHIMA

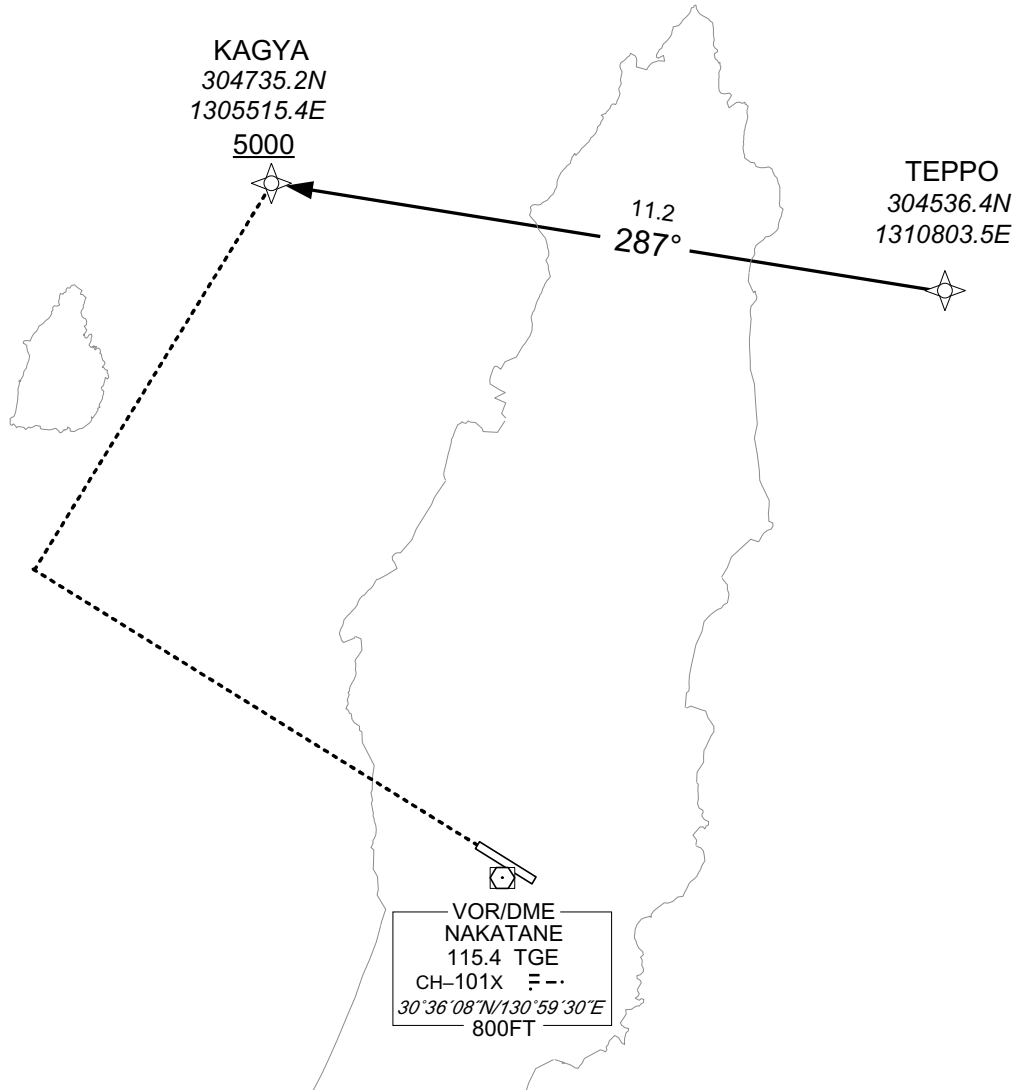
RNAV STAR RWY13

TEPPO ARRIVAL

RNP1

Note GNSS required.

VAR 7°W



CHANGE : Navigation Specification(Basic RNP1 → RNP1).

From TEPPO, to KAGYA at or above 5000FT.

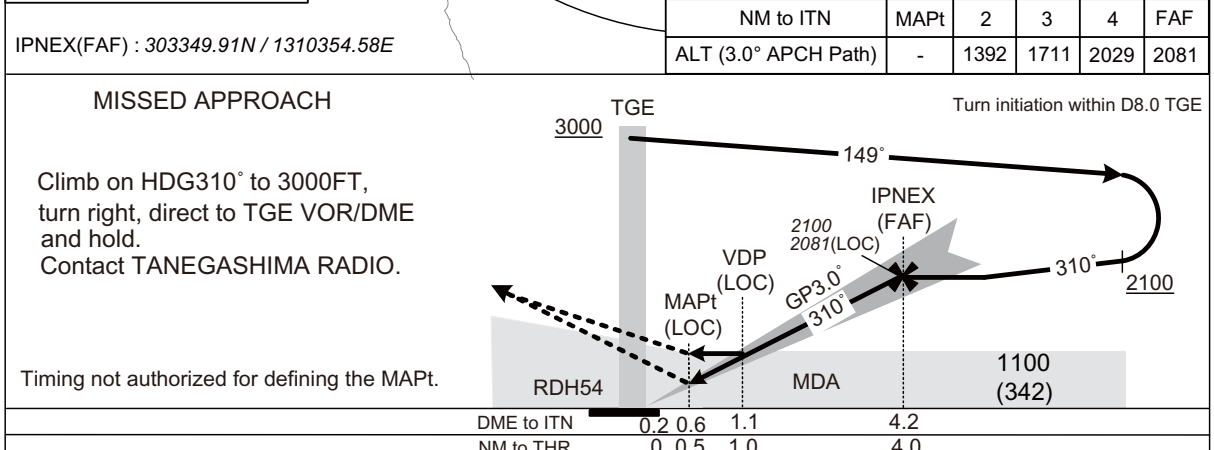
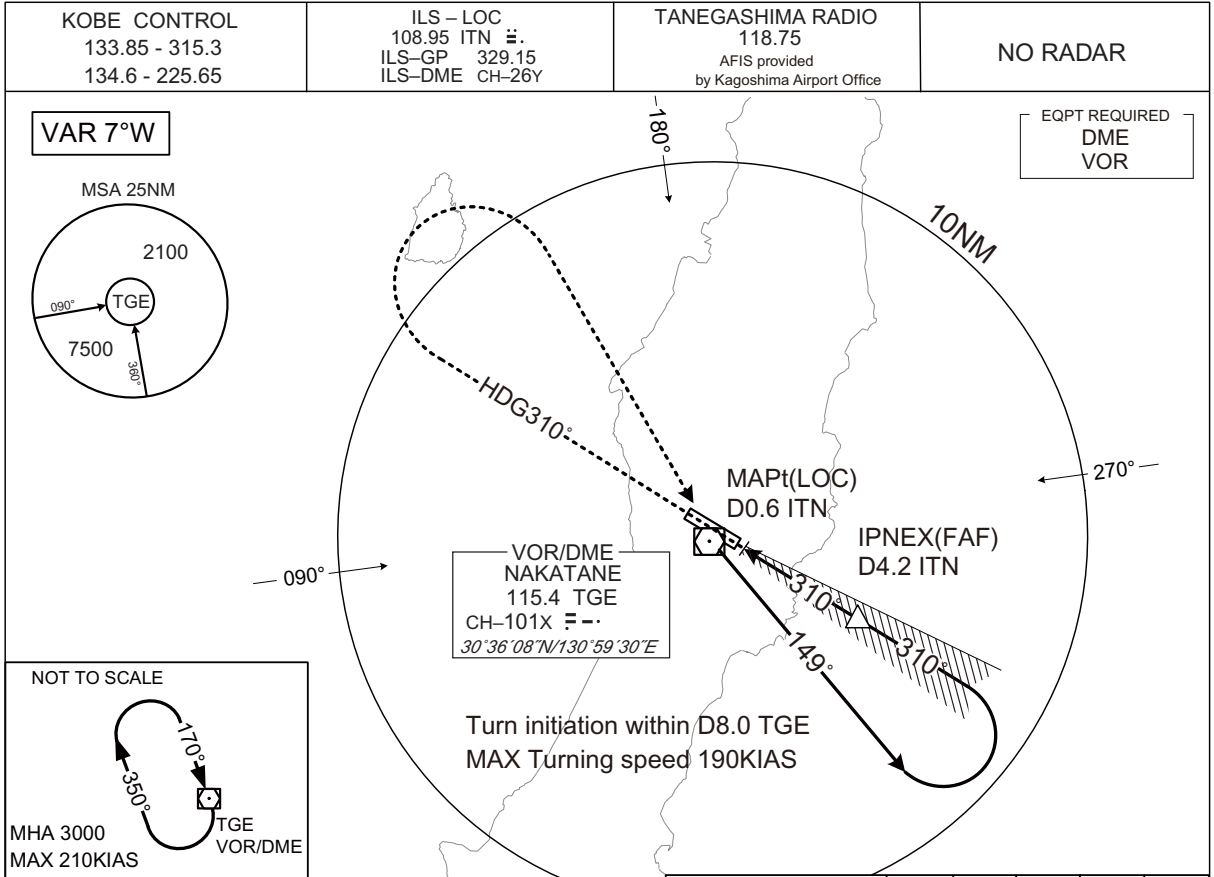
Serial Number	Path Descriptor	Waypoint Identifier	Fly Over	Course °M(°T)	Magnetic Variation	Distance (NM)	Turn Direction	Altitude (FT)	Speed (KIAS)	Vertical Angle	Navigation Specification
001	IF	TEPPO	—	—	-7.0	—	—	—	—	—	RNP1
002	TF	KAGYA	—	287 (280.3)	-7.0	11.2	—	+5000	—	—	RNP1

INTENTIONALLY LEFT BLANK

INSTRUMENT APPROACH CHART

RJFG / TANEGASHIMA

ILS Z or LOC RWY31



Missed APCH climb gradient MNM 4.0%

MINIMA		THR elev. 758		AD elev. 768		
CAT	CAT I		LOC		CIRCLING	
	DA(H)	RVR/CMV	MDA(H)	RVR/CMV	MDA(H)	VIS
A	958(200)	550	1100(342)	900	1500(732)	1600
B				1000		
C				1800(1032)	2400	
D				1400	3200	

MINIMA with Missed APCH climb gradient of 2.5% are not established.
Circling to NORTH side of RWY only.

CHANGE : PROC renamed.

INSTRUMENT APPROACH CHART

RJFG / TANEGASHIMA

ILS Y RWY31

KOBE CONTROL 133.85 - 315.3 134.6 - 225.65	ILS - LOC 108.95 ITN 3.0 ILS-GP 329.15 ILS-DME CH-26Y	TANEGASHIMA RADIO 118.75 AFIS provided by Kagoshima Airport Office	NO RADAR
---	---	--	-----------------

VAR 7°W

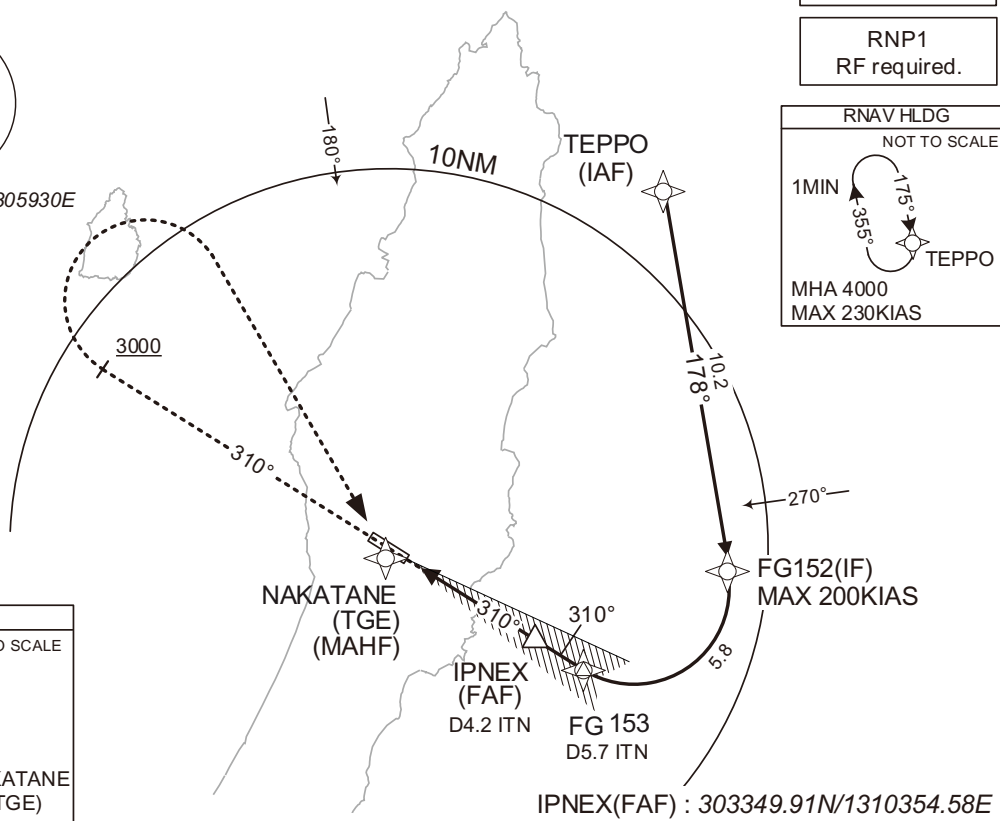
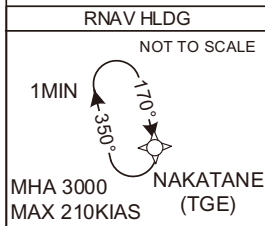
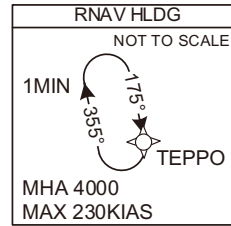
MSA 25NM



ARP : 303618N / 1305930E

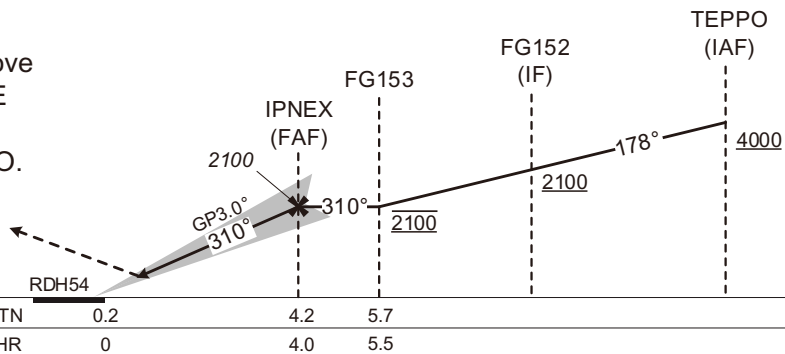
EQPT REQUIRED
DME

RNP1
RF required.



MISSED APPROACH

Climb on course 310°, at or above 3000FT turn right, direct to TGE and hold at 3000FT.
Contact TANEGASHIMA RADIO.



Missed APCH climb gradient MNM 4.0%

MINIMA	THR elev. 758	AD elev. 768		
CAT	CAT I			
	DA(H)	RVR/CMV		
A	958(200)	550		
B			1500(732)	1600
C			1800(1032)	2400
D				3200

MINIMA with Missed APCH climb gradient of 2.5% are not established.
Circling to NORTH side of RWY only.

CHANGE : Navigation Specification(Basic RNP1 → RNP1).

INSTRUMENT APPROACH CHART

RJFG / TANEGASHIMA

ILS Y RWY31

Coding Table

Serial Number	Path Descriptor	Waypoint Identifier	Fly Over	Course °M(°T)	Magnetic Variation	Distance (NM)	Turn Direction	Altitude (FT)	Speed (KIAS)	Vertical Angle	Navigation Specification
001	IF	TEPPO	-	-	-7.0	-	-	+4000	-	-	RNP1
002	TF	FG152	-	178 (171.4)	-7.0	10.2	-	+2100	-200	-	RNP1
003	RF Center: FGRF1 r=2.51NM	FG153	-	-	-7.0	5.8	R	2100	-	-	RNP1
001	CA	-	-	310 (303.0)	-7.0	-	-	+3000	-	-	RNP1
002	DF	TGE	-	-	-7.0	-	R	3000	-	-	RNP1

Path	Waypoint Identifier	Inbound Course °M(°T)	Magnetic Variation	Outbound Time (MIN)	Turn Direction	Minimum Altitude (FT)	Maximum Altitude (FT)	Speed (KIAS)	Navigation Specification
Hold	TEPPO	175 (168.4)	-7.0	1.0 (-14000)	R	4000	FL140	-230 (-14000)	RNP1
Hold	TGE	170 (163.3)	-7.0	1.0 (-14000)	R	3000	FL140	-210 (-14000)	RNP1

Waypoint Coordinates

Waypoint Identifier	Coordinates	RF Arc Center Identifier	Coordinates
TEPPO	304536.42N / 1310803.50E	FGRF1	303507.53N / 1310656.98E
FG152	303530.12N / 1310949.53E		
FG153	303300.85N / 1310522.05E		
TGE	303607.76N / 130.5929.52E		

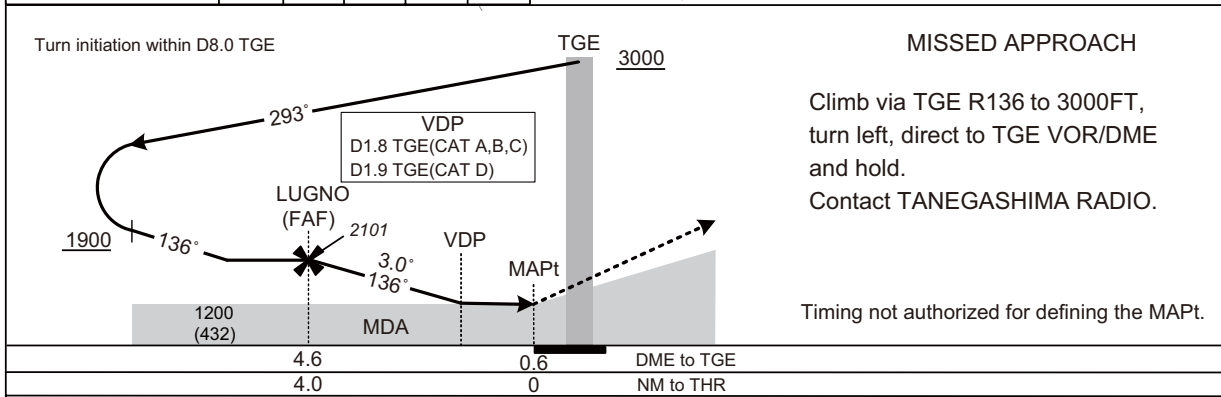
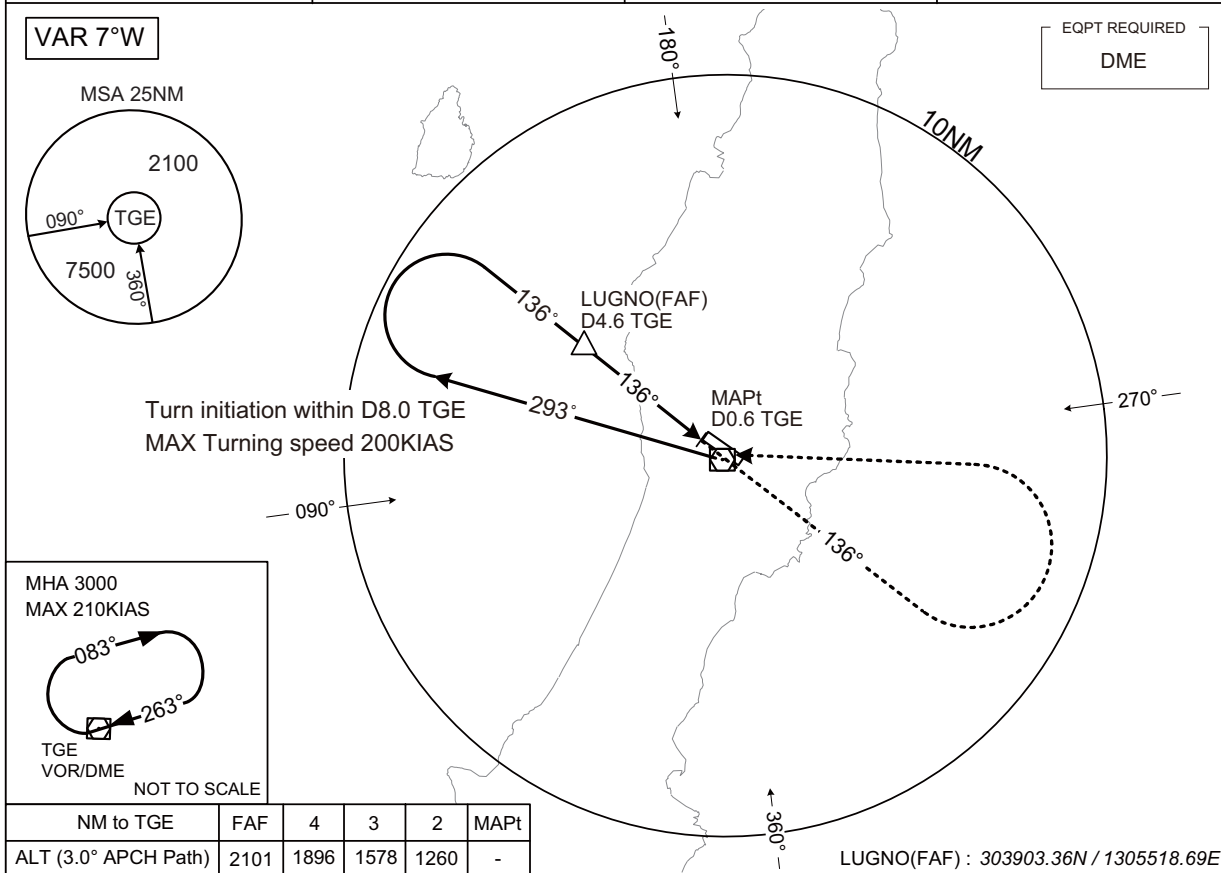
CHANGE : Navigation Specification(Basic RNP1 → RNP1).

INSTRUMENT APPROACH CHART

RJFG / TANEGASHIMA

VOR RWY13

KOBE CONTROL 133.85 - 315.3 134.6 - 225.65	NAKATANE VOR/DME 115.4 TGE $\overline{--}$ CH - 101X 30°36'08"N/130°59'30"E	TANEGASHIMA RADIO 118.75 AFIS provided by Kagoshima Airport Office	NO RADAR
---	---	--	-----------------



Missed APCH climb gradient MNM 5.0%

MINIMA	THR elev. 778	AD elev. 768	
CAT	CIRCLING		
	MDA(H)	CMV	MDA(H) VIS
A	1160(392)	1200	1500(732) 1600
B		1300	
C	1180(412)	1400	1800(1032) 2400
D	1200(432)	1600	

MINIMA with Missed APCH climb gradient of 2.5% are not established.
 Circling to NORTH side of RWY only.

INSTRUMENT APPROACH CHART

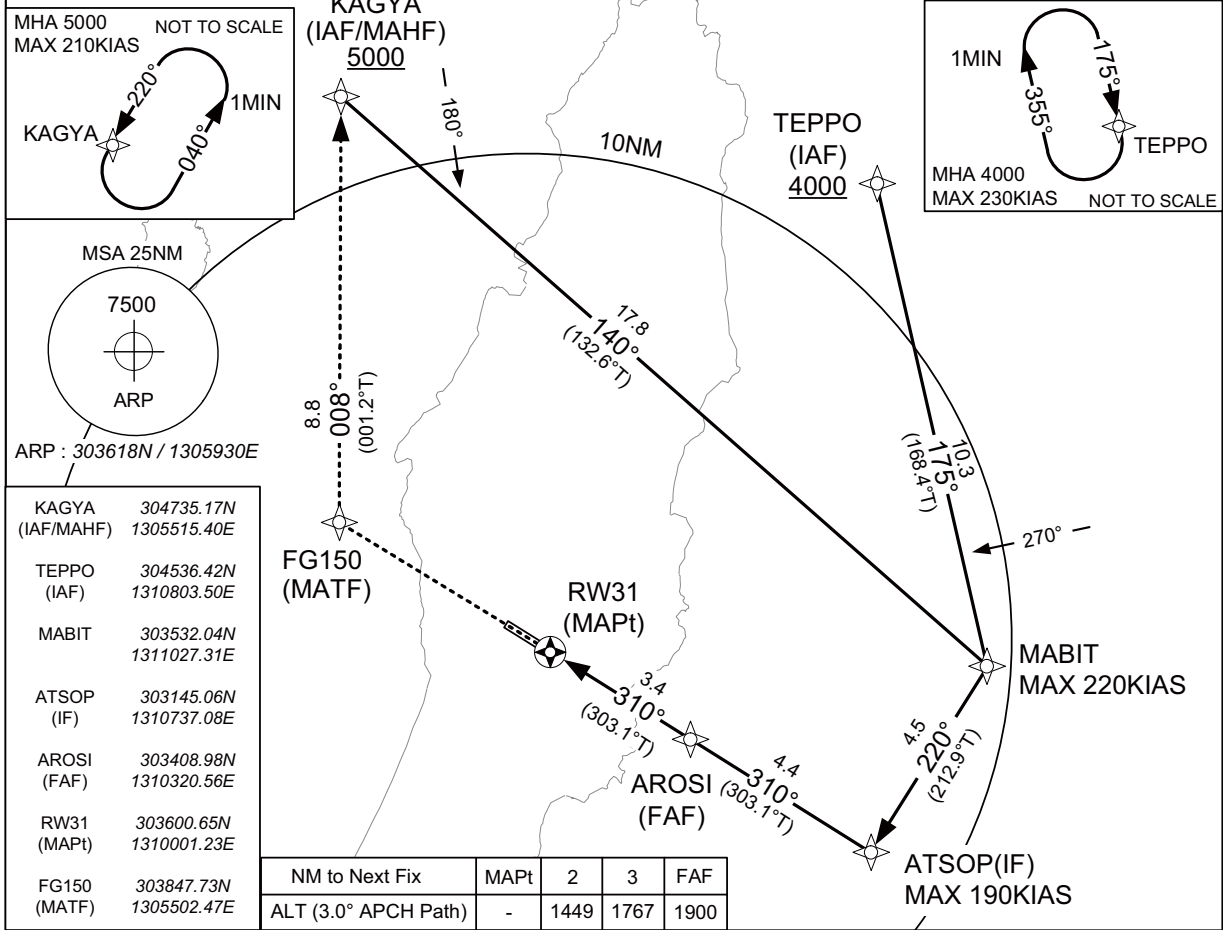
RJFG / TANEGASHIMA

RNP RWY31

KOBE CONTROL 133.85 - 315.3 134.6 - 225.65	RNP APCH MSAS CH88975 M31A	TANEGASHIMA RADIO 118.75 AFIS provided by Kagoshima Airport Office	NO RADAR
--	----------------------------------	---	----------

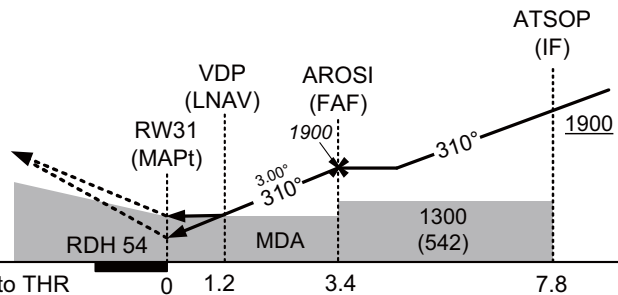
VAR 7°W

Baro-VNAV not authorized below -5°C



MISSED APPROACH

Direct to FG150, to KAGYA and hold at 5000FT.
Contact TANEGASHIMA RADIO.



Missed APCH climb gradient MNM 5.0%

MINIMA		THR elev. 758		AD elev. 768				
CAT	LPV		LNAV/VNAV		LNAV		CIRCLING	
	DA(H)	RVR/CMV	DA(H)	RVR/CMV	MDA(H)	RVR/CMV	MDA(H)	VIS
A	1043(285)	800	1170(412)	900	1170(412)	900	1500(732)	1600
B	1053(295)			1000		1000		
C	1063(305)	1000	1400	1400	1400	1800(1032)	2400	
D	1073(315)	1400					3200	

MINIMA with Missed APCH climb gradient of 2.5% are not established.
Circling to NORTH side of RWY only.

INSTRUMENT APPROACH CHART

RJFG / TANEGASHIMA

RNP RWY31

FAS DATA BLOCK

Operation type	0	LTP/FTP ellipsoidal height	+02605
SBAS service provider identifier	2	FPAP latitude	303635.9110N
Airport identifier	RJFG	FPAP longitude	1305858.2130E
Runway	31	Threshold crossing height	00016.5
Approach performance designator	0	TCH units selector	1
Route indicator		Glide path angle	03.00
Reference path data selector	0	Course width at threshold	105.00
Reference path ID	M31A	∠ length offset	0000
LTP/FTP latitude	303600.6245N	HAL	40.0
LTP/FTP longitude	1310001.2545E	VAL	50.0
CRC remainder	2EE6E3AF		

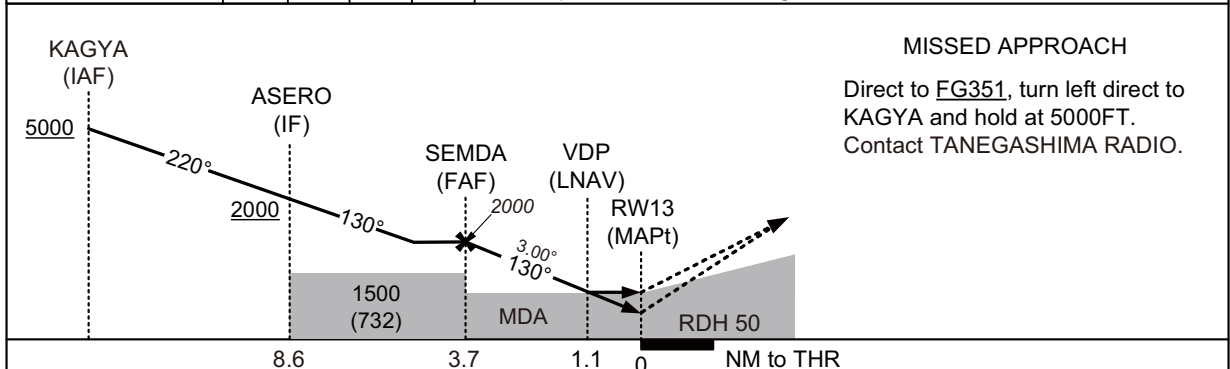
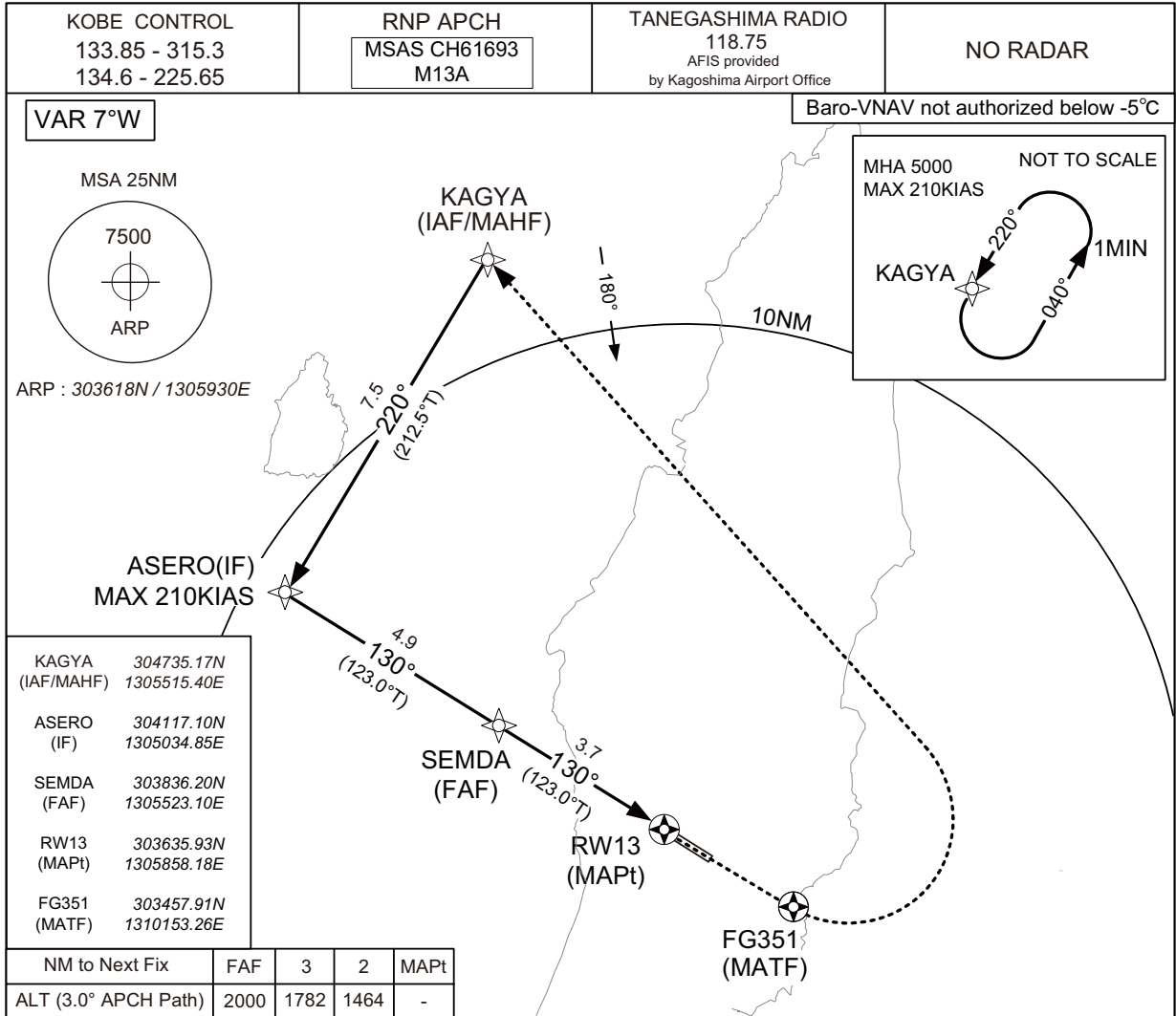
Required additional data

LTP/FTP orthometric height	231.2
----------------------------	-------

INSTRUMENT APPROACH CHART

RJFG / TANEGASHIMA

RNP RWY13



Missed APCH climb gradient MNM 5.0%

MINIMA		THR elev. 778		AD elev. 768					
CAT	LPV		LNAV/VNAV		LNAV		CIRCLING		
	DA(H)	CMV	DA(H)	CMV	MDA(H)	CMV	MDA(H)	VIS	
A	1028(250)	1000	1160(382)	1200	1160(392)	1200	1500(732)	1600	
B		1100		1300		1300			
C	1043(265)	1200		1400		1400			1800(1032)
D	1052(274)	1400		1600		1600			

MINIMA with Missed APCH climb gradient of 2.5% are not established.
Circling to NORTH side of RWY only.

INSTRUMENT APPROACH CHART

RJFG / TANEGASHIMA

RNP RWY13

FAS DATA BLOCK

Operation type	0	LTP/FTP ellipsoidal height	+02666
SBAS service provider identifier	2	FPAP latitude	303600.6245N
Airport identifier	RJFG	FPAP longitude	1310001.2545E
Runway	13	Threshold crossing height	00015.0
Approach performance designator	0	TCH units selector	1
Route indicator		Glide path angle	03.00
Reference path data selector	0	Course width at threshold	105.00
Reference path ID	M13A	∠ length offset	0000
LTP/FTP latitude	303635.9110N	HAL	40.0
LTP/FTP longitude	1305858.2130E	VAL	50.0
CRC remainder	1527D649		

Required additional data

LTP/FTP orthometric height	237.1
----------------------------	-------

RJFG / TANEGASHIMA

Visual REP



※図中に標高を示す数字がある場合、単位はメートル(m)である。The unit of measurement used to express elevation is meter(m).

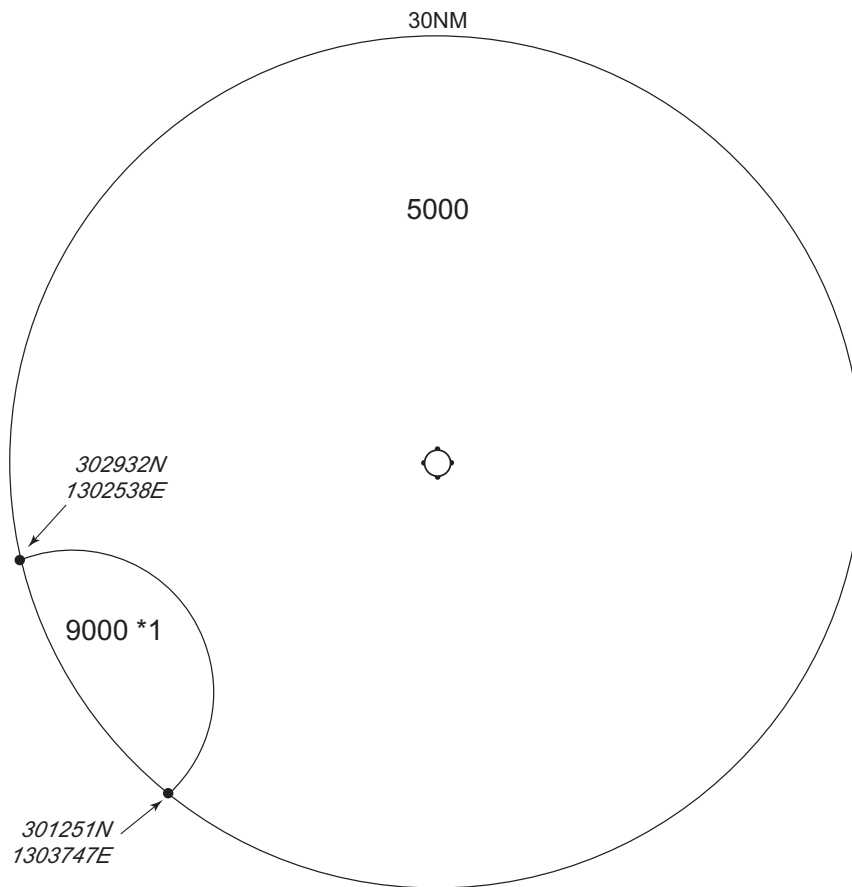
CHANGE : VAR.

Call sign	BRG / DIST from ARP	Remarks
喜志鹿崎 Kishigasaki	014°T / 14.2NM	灯台 Lighthouse
西之表 Nishinoomote	359°T / 7.5NM	西之表港 Harbor
10NM W	270°T / 10.0NM	海上 Over the sea
島間 Shimama	219°T / 10.6NM	港 Harbor
竹崎 Takezaki	187°T / 13.2NM	灯台 Lighthouse

RJFG / TANEGASHIMA

Minimum Vectoring Altitude CHART

CHANGE : Minimum vectoring altitude(6000→5000).



*1 : 302013N/1302957E RADIUS : 10NM

CENTER: 303618N/1305930E (ARP)