

AD 2 AERODROMES

RJFG AD 2.1 AERODROME LOCATION INDICATOR AND NAME

RJFG - TANEGASHIMA

RJFG AD 2.2 AERODROME GEOGRAPHICAL AND ADMINISTRATIVE DATA

1	ARP coordinates and site at AD	303618N/1305930E 123°/1.0km FM RWY13 THR
2	Direction and distance from (city)	7.6nm S FM Nishinoomote City
3	Elevation/ Reference temperature	768ft / -
4	Geoid undulation at AD ELEV PSN	29.4m(96ft)
5	MAG VAR/ Annual change	7°W (2021) / 5°W
6	AD Administration, address, telephone, telefax, telex, AFS, e-mail and/or Web-site addresses	KAGOSHIMA PREF Nakatane-Town, Kagoshima Pref. 891-3603 Japan Tel: 0997-27-5111, Fax: 0997-27-7373 E-mail:tane-kanri@ever.ocn.ne.jp
7	Types of traffic permitted (IFR/VFR)	IFR/VFR
8	Remarks	Nil

RJFG AD 2.3 OPERATIONAL HOURS

1	AD Administration	2330-0930
2	Customs and immigration	On request Customs: 099-260-3125 Immigration: 099-222-5658
3	Health and sanitation	Quarantine(human): On request(099-222-8670) Quarantine(animal, plant): Nil
4	AIS Briefing Office	Nil
5	ATS Reporting Office(ARO)	Nil
6	MET Briefing Office	H24 (FUKUOKA)
7	ATS	2330-0930 Remarks: AFIS provided by Kagoshima Airport Office.
8	Fuelling	2330-0930
9	Handling	2330-0930
10	Security	2330-0930
11	De-icing	Nil
12	Remarks	Nil

RJFG AD 2.4 HANDLING SERVICES AND FACILITIES

1	Cargo-handling facilities	Nil
2	Fuel/ oil types	JET A-1
3	Fuelling facilities/ capacity	Fuel Truck / ASK AD Administration
4	De-icing facilities	Not available
5	Hangar space for visiting aircraft	Not available
6	Repair facilities for visiting aircraft	Not available
7	Remarks	Nil

RJFG AD 2.5 PASSENGER FACILITIES

1	Hotels	Hotels in Nishinoomote city
2	Restaurants	At Airport
3	Transportation	Buses and Taxi
4	Medical facilities	Hospital in Nishinoomote city 14km
5	Bank and Post Office	Bank and Post Office in Nishinoomote city
6	Tourist Office	Not available
7	Remarks	Nil

RJFG AD 2.6 RESCUE AND FIRE FIGHTING SERVICES

1	AD category for fire fighting	CAT 7
2	Rescue equipment	Chemical fire fighting truck x 2
3	Capability for removal of disabled aircraft	to be developed
4	Remarks	Nil

RJFG AD 2.7 SEASONAL AVAILABILITY-CLEARING

1	Types of clearing equipment	Not available
2	Clearance priorities	Nil
3	Remarks	Nil

RJFG AD 2.8 APRONS, TAXIWAYS AND CHECK LOCATIONS DATA

1	Apron surface and strength	Surface: cement-concrete Strength: PCN 53/R/C/X/T
2	Taxiway width, surface and strength	Width: 23m, Surface: asphalt-concrete Strength: PCN 42/F/A/X/T
3	ACL and elevation	Not available
4	VOR checkpoints	Not available
5	INS checkpoints	(Spot NR) 1 303632N 1305927E 2 303631N 1305929E 3 303630N 1305930E
6	Remarks	Nil

RJFG AD 2.9 SURFACE MOVEMENT GUIDANCE AND CONTROL SYSTEM AND MARKINGS

1	Use of aircraft stand ID signs, TWY guide lines and Visual docking/ parking guidance system of aircraft stands	Nil
2	RWY and TWY markings and LGT	RWY: (RWY 13/31) (Marking): RWY designation, RWY CL, RWY THR, RWY middle point, Aiming point, TDZ, RWY side stripe (LGT): RCLL, REDL, RTHL, RENL, RTZL(RWY31), WBAR(RWY31) TWY: All TWY (Marking): TWY CL, RWY HLDG PSN, TWY side stripe (LGT): TWY edge LGT, TWY CL LGT
3	Stop bars	Nil
4	Remarks	(Marking) Overrun area marking (LGT) Apron flood LGT

RJFG AD 2.10 AERODROME OBSTACLES

- In Area2 Nil
- In Area3 To be developed

RJFG AD 2.11 METEOROLOGICAL INFORMATION PROVIDED

1	Associated MET Office	FUKUOKA
2	Hours of service MET Office outside hours	H24 (FUKUOKA)
3	Office responsible for TAF preparation Periods of validity	Nil
4	Trend forecast Interval of issuance	Nil
5	Briefing/ consultation provided	Briefing is available upon inquiry at FUKUOKA
6	Flight documentation Language(s) used	C En
7	Charts and other information available for briefing or consultation	S ₆ , U ₈₅ , U ₇ , U ₅ , U ₃ , U ₂₅ , U _{2/T_r} , P _S , P ₅ , P ₃ , P ₂₅ , P _{SWE} , P _{SWF} , P _{SWG} , P _{SWI} , P _{SWM} , P _{SW(domestic)} , E, C, W _E , W _F , W _G , W _I , W, N
8	Supplementary equipment available for providing information	Nil
9	ATS units provided with information	RADIO
10	Additional information(limitation of service, etc.)	Nil

RJFG AD 2.12 RUNWAY PHYSICAL CHARACTERISTICS

Designations RWY NR	TRUE BRG	Dimensions of RWY(M)	Strength(PCN) and surface of RWY	THR coordinates THR geoid undulation	THR elevation and highest elevation of TDZ of precision APP RWY
1	2	3	4	5	6
13	122.91°	2000x45	PCN42/F/A/X/T Asphalt Concrete	303635.93N/1305858.18E 97ft	THR ELEV:778ft
31	302.91°	2000x45	PCN42/F/A/X/T Asphalt Concrete	303600.65N/1310001.23E 96ft	THR ELEV:758ft TDZ ELEV:766.7ft
Slope of RWY	Strip Dimensions(M)	RESA(Overrun) Dimensions(M)	Remarks		
7	10	11	14		
See below figure	2120x300	40x300	RWY grooving: 2000x30m		
See below figure	2120x300	190x(MNM:160 MAX:300)*	RWY grooving: 2000x30m		
*For detail, ask airport administrator					
<p>The diagram illustrates the elevation profile of Runway 13 and Runway 31. Runway 13 starts at an elevation of 778ft. Runway 31 ends at an elevation of 758ft. The horizontal distance between the start of Runway 13 and the end of Runway 31 is 2000m. The slope between these two points is 0.30%.</p>					

RJFG AD 2.13 DECLARED DISTANCES

RWY Designator	TORA (m)	TODA (m)	ASDA (m)	LDA (m)	Remarks
1	2	3	4	5	6
13	2000	2000	2000	2000	Nil
31	2000	2000	2000	2000	Nil

RJFG AD 2.14 APPROACH AND RUNWAY LIGHTING

RWY Designator	APCH LGT type LEN INTST	RTHL Color WBAR	PAPI (VASIS) Angle DIST FM THR MEHT	RTZL LEN	RCLL LEN Spacing Color INTST	REDL LEN Spacing Color INTST	RENL Color WBAR	STWL LEN Color
1	2	3	4	5	6	7	8	9
13	SALS (*1) 420m LIH	Green -	PAPI 3.0°/LEFT 323m 49ft	-	2,000m 30m Coded color (White/Red) LIH	2,000m 60m Coded color (White/Yellow) LIH	Red	Nil(*2)
31	PALS (CAT I) 900m LIH	Green Green	PAPI 3.0°/LEFT 327m 55ft	900m	2,000m 30m Coded color (White/Red) LIH	2,000m 60m Coded color (White/Yellow) LIH	Red	Nil(*2)
Remarks								
10								
SALS with APCH LGT beacon(600m and 870m FM RWY THR)(*1) Overrun area edge LGT(LEN:60m Color:Red)(*2)								

RJFG AD 2.15 OTHER LIGHTING, SECONDARY POWER SUPPLY

1	ABN/IBN location, characteristics and hours of operation	ABN: 303631N/1305935E White/Green EV4.3sec, HO
2	LDI location and LGT Anemometer location and LGT	LDI: Nil Anemometer: RWY13: 300m from RWY13 THR, LGTD RWY31: 294m from RWY31 THR, LGTD
3	TWY edge and centerline lighting	TWY edge and center line lights installed, see AD2.9
4	Secondary power supply/ switch-over time	Within 1sec: REDL, RENL, RTHL, WBAR, RCLL and Overrun area edge LGT Within 15sec: Other Lights
5	Remarks	WDI LGT

RJFG AD 2.16 HELICOPTER LANDING AREA

Nil

RJFG AD 2.17 ATS AIRSPACE

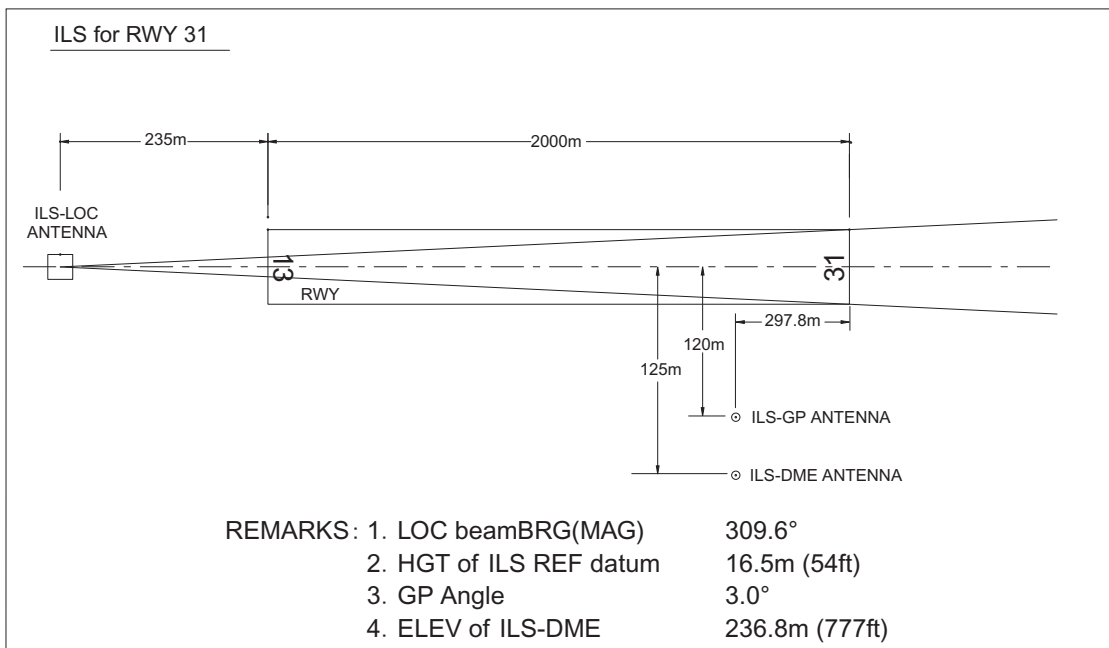
Designation and lateral limits		Vertical limits (ft)	Airspace classification	ATS unit call sign Language	Remarks
1		2	3	4	6
Tanegashima Information zone	Area within a radius of 5nm of Tanegashima ARP (30° 36'N130° 59'E).	----- 3000	E	TANEGASHIMA RADIO En	

RJFG AD 2.18 ATS COMMUNICATION FACILITIES

Service designation	Call sign	Frequency	Hours of operation	Remarks
1	2	3	4	5
AFIS	Tanegashima Radio	118.75MHz	2330 - 0930	Operated by Kagoshima Airport Office.

RJFG AD 2.19 RADIO NAVIGATION AND LANDING AIDS

Type of aid (VOR declination)	ID	Frequency	Hours of operation	Position of transmitting antenna coordinates	Elevation of DME transmitting antenna	Remarks
1	2	3	4	5	6	7
VOR (7° W/2019)	TGE	115.4MHz	H24	303607.76N/ 1305929.52E		
DME	TGE	1188MHz (CH-101X)	H24	303607.76N/ 1305929.52E	810.4ft	DME Unusable: 130°-160° beyond 15nm BLW 3000ft.
ILS-LOC 31 (CAT-I)	ITN	108.95MHz	2330-0930	303640.08N/ 1305850.76E		BRG(MAG) 310° 235m away FM RWY13 THR
ILS-GP 31		329.15MHz	2330-0930	303602.61N/ 1305949.42E		GP angle 3.0° HGT of ILS Ref datum 54ft. 297.8m inside FM RWY31 THR 120m SW of RCL
ILS-DME 31	ITN	1113MHz (CH-26Y)	2330-0930	303602.49N/ 1305949.29E	777ft	297.8m inside FM RWY31 THR 125m SW of RCL
MSAS		1575.42MHz	H24			Transmitting antennas are satellite based



RJFG AD 2.20 LOCAL TRAFFIC REGULATIONS

1. Airport regulations

Nil

2. Taxiing to and from stands

Nil

3. Parking area for small aircraft(General aviation)

Nil

4. Parking area for helicopters

Nil

5. Apron - taxiing during winter conditions

Nil

6. Taxiing - limitations

Nil

7. School and training flights - technical test flights - use of runways

Nil

8. Helicopter traffic - limitation

Nil

9. Removal of disabled aircraft from runways

Nil

RJFG AD 2.21 NOISE ABATEMENT PROCEDURES

Nil

RJFG AD 2.22 FLIGHT PROCEDURES

TAKE OFF MINIMA

	RWY	ACFT CAT	REDL & RCLL		REDL or RCLL or RCL Marking		NIL (DAYTIME ONLY)	
			RVR	VIS	RVR	VIS	RVR	VIS
Multi-Engine ACFT with TKOF ALTN AP FILED	13	A,B,C,D	-	400m	-	400m	-	500m
	31	A,B,C,D	400m	400m	400m	400m	-	500m
OTHER	13	A,B,C,D	AVBL LDG MINIMA					
	31							

RJFG AD 2.23 ADDITIONAL INFORMATION

Nil

RJFG AD 2.24 CHARTS RELATED TO AN AERODROME

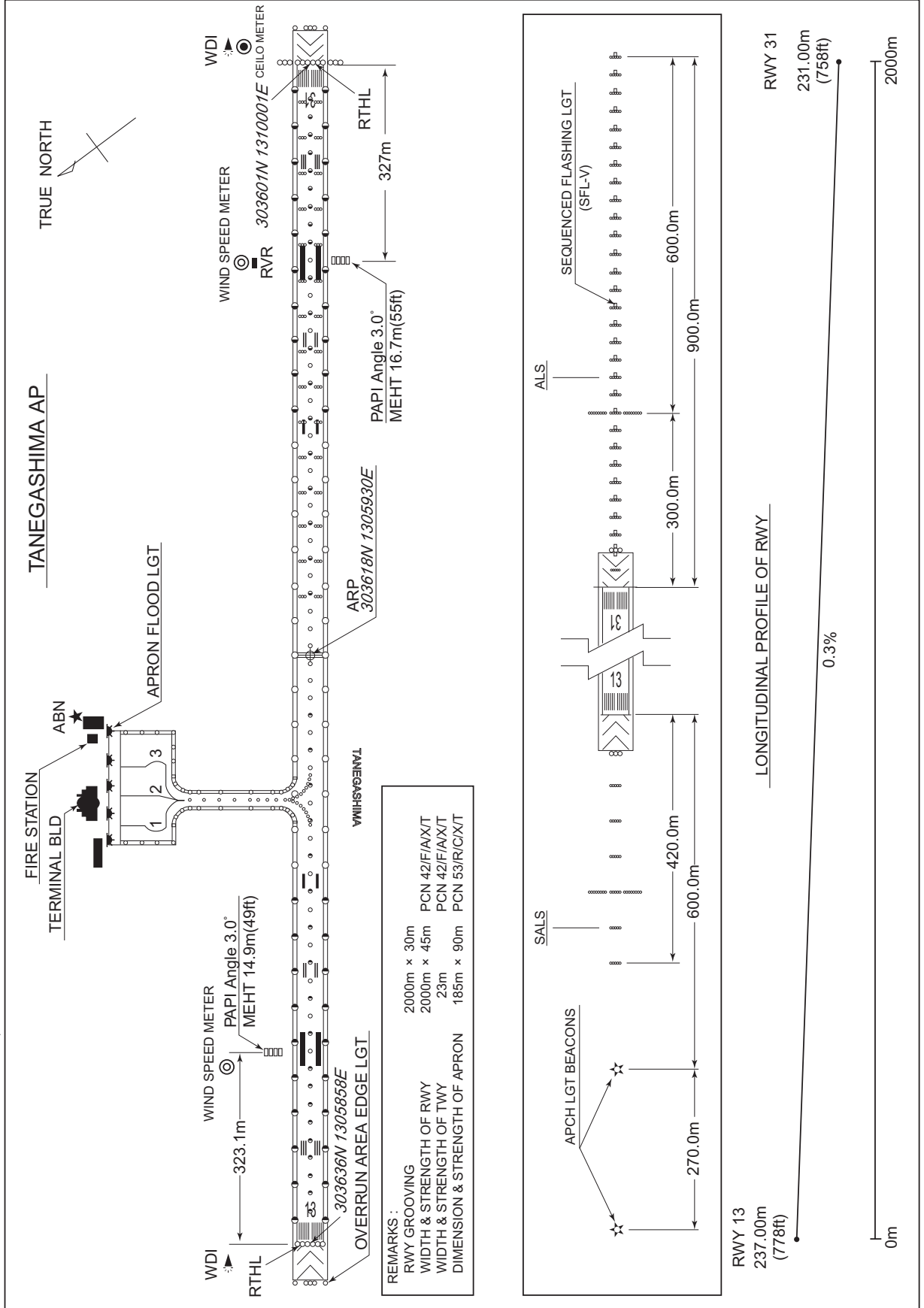
<ul style="list-style-type: none"> Aerodrome/Heliport Chart Standard Departure Chart - Instrument (TANEGASHIMA-REVERSAL) Standard Departure Chart - Instrument (FREDY-RNAV) Standard Departure Chart - Instrument (KAGYA-RNAV) Standard Arrival Chart - Instrument (TEPPO-RNAV) Instrument Approach Chart (ILS Z or LOC RWY 31) Instrument Approach Chart (ILS Y RWY 31) Instrument Approach Chart (VOR RWY 13) Instrument Approach Chart (RNP RWY 31) Instrument Approach Chart (RNP RWY 13) Other Chart (Visual REP) Other Chart (MVA CHART)
--

INTENTIONALLY LEFT BLANK

RJFG / TANEGASHIMA

AD CHART

CHANGE : CEILO METER, WIND SPEED METER added.



INTENTIONALLY LEFT BLANK

STANDARD DEPARTURE CHART - INSTRUMENT

RJFG / TANEGASHIMA

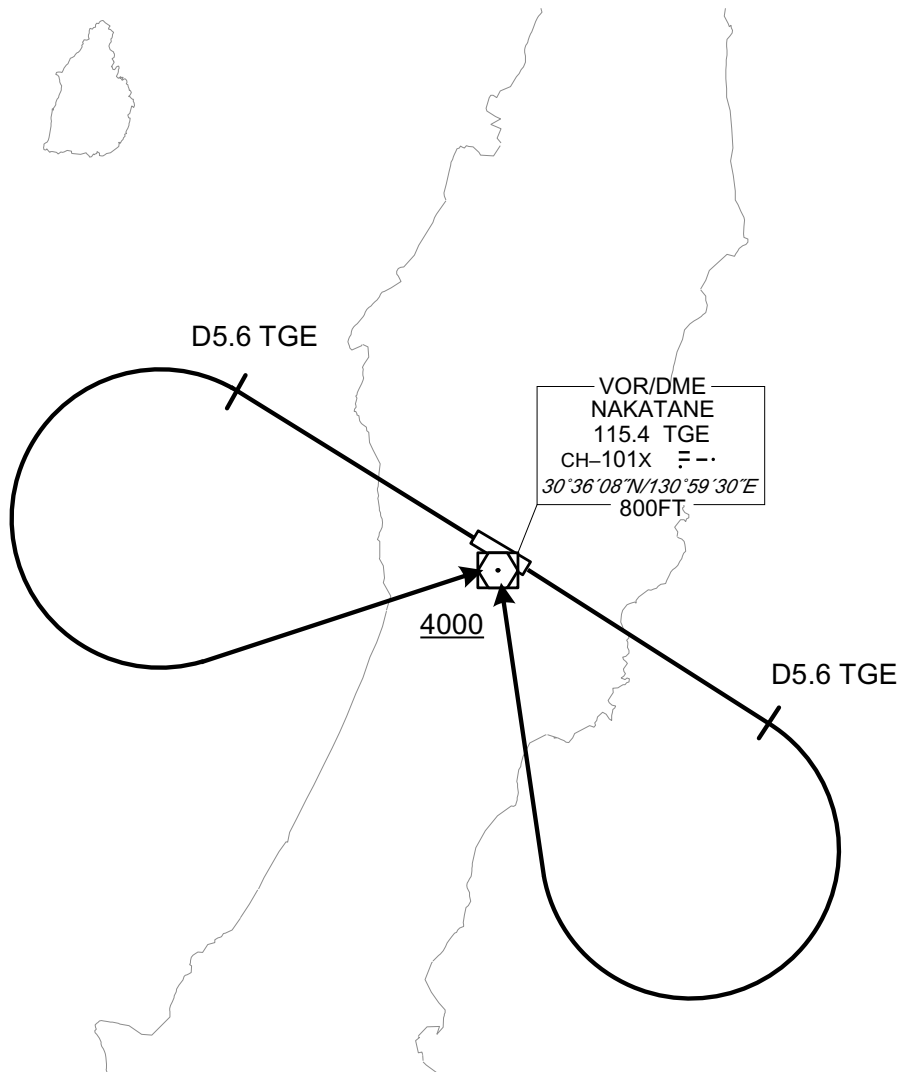
SID

CHANGE : PROC renamed. QUEEN TWO DEPARTURE, KINKO TWO DEPARTURE abolished. PROC course.

TANEGASHIMA REVERSAL THREE DEPARTURE

RWY 13 : Climb RWY HDG to TGE 5.6DME, turn right,...
RWY 31 : Climb RWY HDG to TGE 5.6DME, turn left,...

... direct to TGE VOR/DME.
Cross TGE VOR/DME at or above 4000FT.



STANDARD DEPARTURE CHART -INSTRUMENT

RJFG / TANEGASHIMA

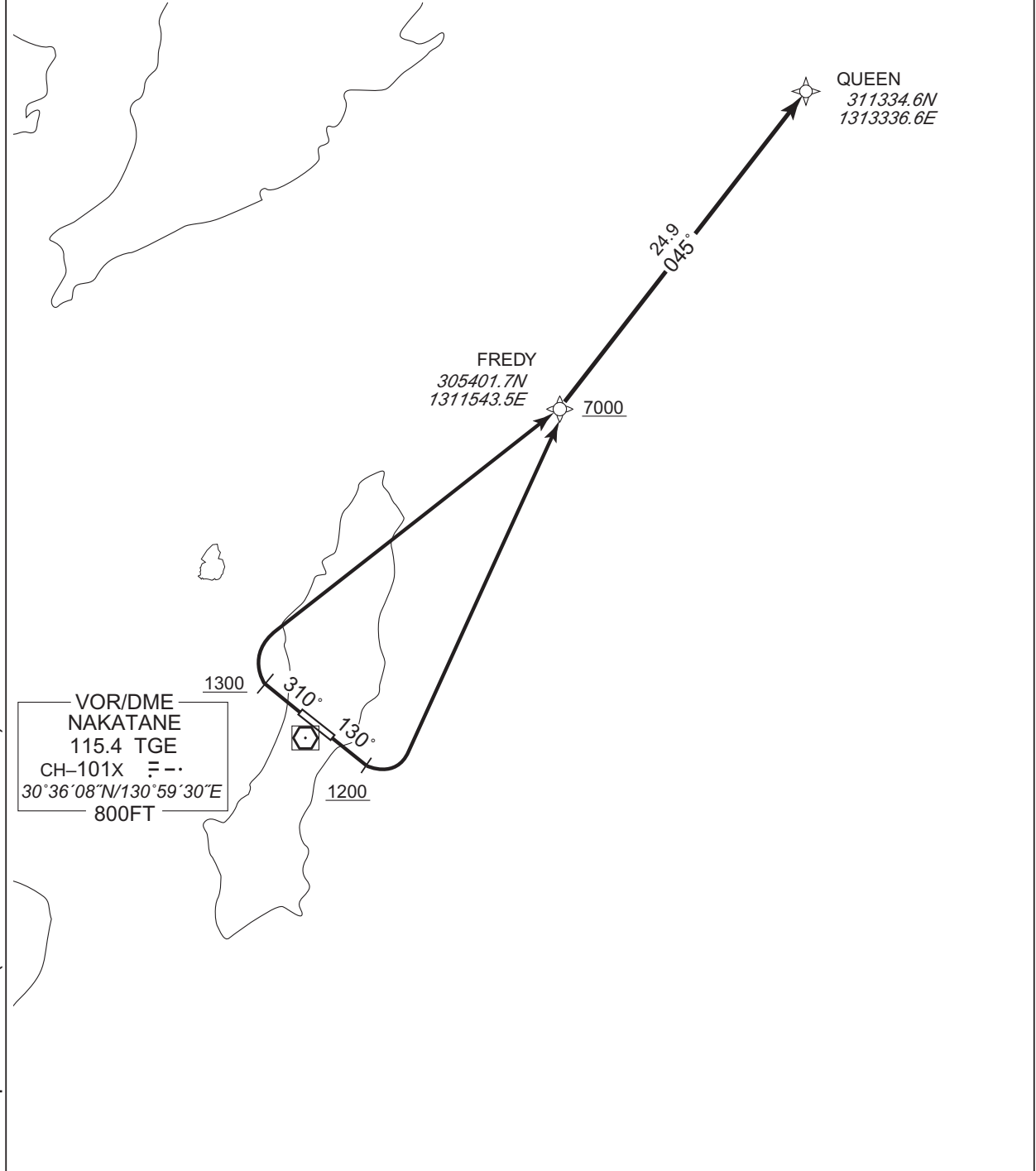
RNAV SID

FREDY TWO DEPARTURE

RNP1

Note GNSS required.

VAR 7°W



CHANGE : Navigation Specification(Basic RNP1 → RNP1).

RWY13 : Climb on HDG 130° at or above 1200FT, turn left direct to FREDY at or above 7000FT, to QUEEN.
 RWY31 : Climb on HDG 310° at or above 1300FT, turn right direct to FREDY at or above 7000FT, to QUEEN.

STANDARD DEPARTURE CHART -INSTRUMENT

RJFG / TANEGASHIMA

RNAV SID

FREDY TWO DEPARTURE

RWY13

Serial Number	Path Descriptor	Waypoint Identifier	Fly Over	Course °M(°T)	Magnetic Variation	Distance (NM)	Turn Direction	Altitude (FT)	Speed (KIAS)	Vertical Angle	Navigation Specification
001	VA	-	-	130 (123.0)	-7.0	-	-	+1200	-	-	RNP1
002	DF	FREDY	-	-	-7.0	-	L	+7000	-	-	RNP1
003	TF	QUEEN	-	045 (038.0)	-7.0	24.9	-	-	-	-	RNP1

RWY31

Serial Number	Path Descriptor	Waypoint Identifier	Fly Over	Course °M(°T)	Magnetic Variation	Distance (NM)	Turn Direction	Altitude (FT)	Speed (KIAS)	Vertical Angle	Navigation Specification
001	VA	-	-	310 (303.0)	-7.0	-	-	+1300	-	-	RNP1
002	DF	FREDY	-	-	-7.0	-	R	+7000	-	-	RNP1
003	TF	QUEEN	-	045 (038.0)	-7.0	24.9	-	-	-	-	RNP1

CHANGE : Navigation Specification(Basic RNP1 → RNP1).

STANDARD DEPARTURE CHART -INSTRUMENT

RJFG / TANEGASHIMA

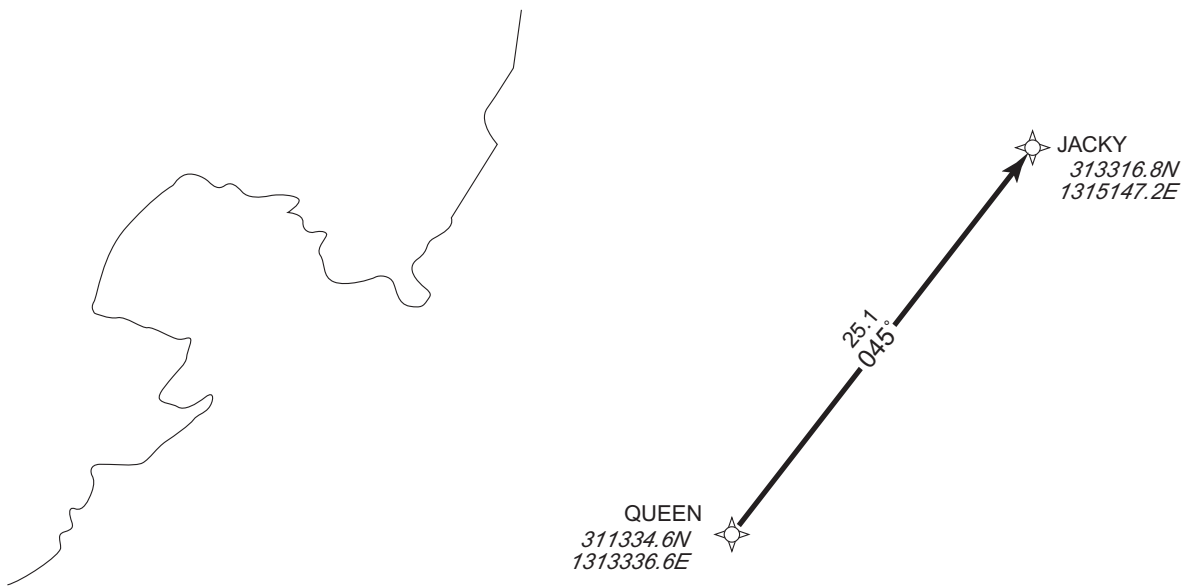
RNAV TRANSITION

JACKY TRANSITION

RNP1

Note GNSS required.

VAR 7°W



From QUEEN to JACKY.

Serial Number	Path Descriptor	Waypoint Identifier	Fly Over	Course °M(°T)	Magnetic Variation	Distance (NM)	Turn Direction	Altitude (FT)	Speed (KIAS)	Vertical Angle	Navigation Specification
001	IF	QUEEN	—	—	-7.0	—	—	—	—	—	RNP1
002	TF	JACKY	—	045 (038.1)	-7.0	25.1	—	—	—	—	RNP1

CHANGE : Navigation Specification(Basic RNP1 → RNP1).

STANDARD DEPARTURE CHART -INSTRUMENT

RJFG / TANEGASHIMA

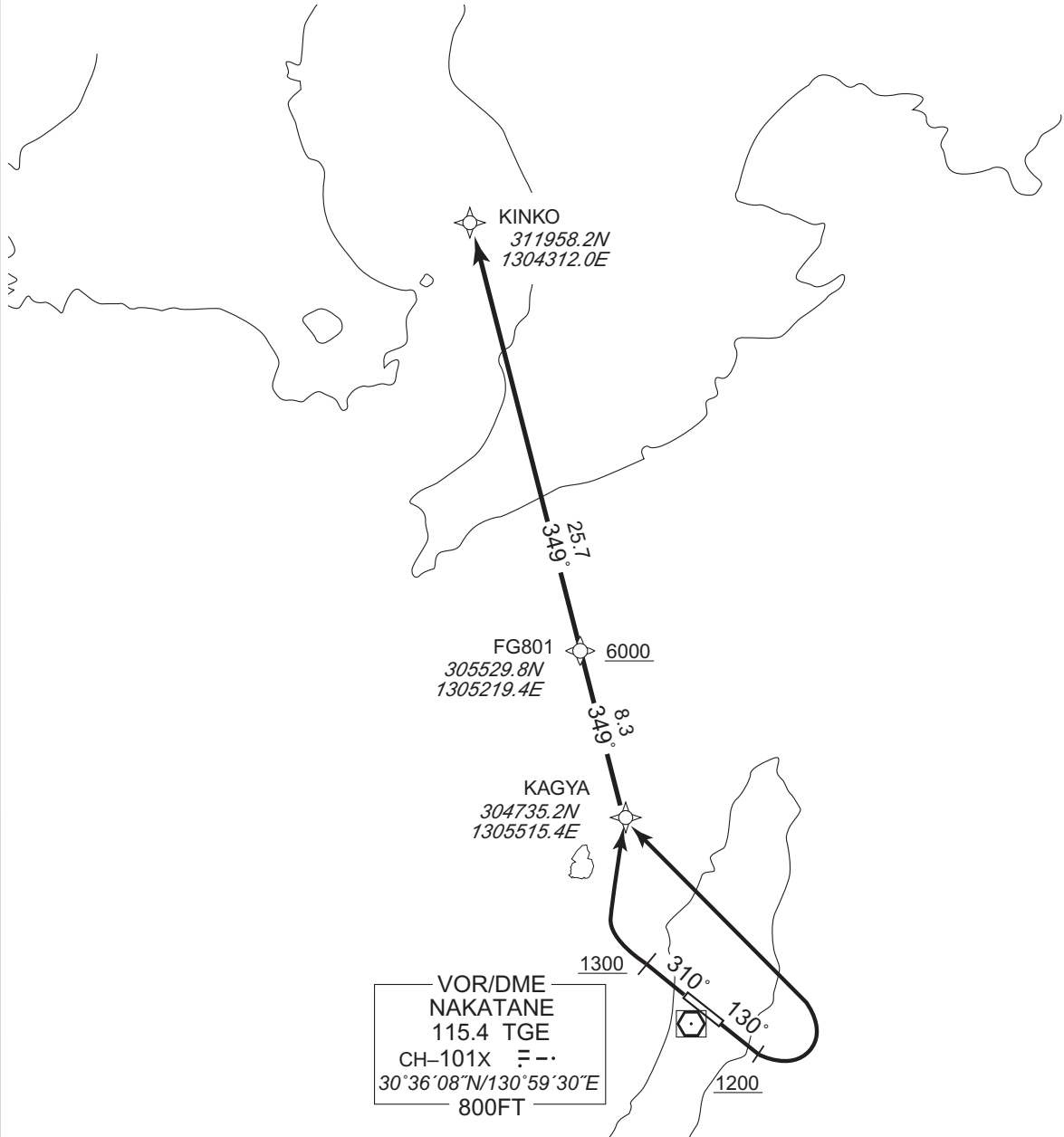
RNAV SID

KAGYA TWO DEPARTURE

RNP1

Note GNSS required.

VAR 7°W



CHANGE : Navigation Specification(Basic RNP1 → RNP1).

RWY13 : Climb on HDG 130° at or above 1200FT, turn left direct to KAGYA, to FG801 at or above 6000FT, to KINKO.

RWY31 : Climb on HDG 310° at or above 1300FT, turn right direct to KAGYA, to FG801 at or above 6000FT, to KINKO.

STANDARD DEPARTURE CHART -INSTRUMENT

RJFG / TANEGASHIMA

RNAV SID

KAGYA TWO DEPARTURE

RWY13

Serial Number	Path Descriptor	Waypoint Identifier	Fly Over	Course °M(°T)	Magnetic Variation	Distance (NM)	Turn Direction	Altitude (FT)	Speed (KIAS)	Vertical Angle	Navigation Specification
001	VA	-	-	130 (123.0)	-7.0	-	-	+1200	-	-	RNP1
002	DF	KAGYA	-	-	-7.0	-	L	-	-	-	RNP1
003	TF	FG801	-	349 (342.4)	-7.0	8.3	-	+6000	-	-	RNP1
004	TF	KINKO	-	349 (342.3)	-7.0	25.7	-	-	-	-	RNP1

RWY31

Serial Number	Path Descriptor	Waypoint Identifier	Fly Over	Course °M(°T)	Magnetic Variation	Distance (NM)	Turn Direction	Altitude (FT)	Speed (KIAS)	Vertical Angle	Navigation Specification
001	VA	-	-	310 (303.0)	-7.0	-	-	+1300	-	-	RNP1
002	DF	KAGYA	-	-	-7.0	-	R	-	-	-	RNP1
003	TF	FG801	-	349 (342.4)	-7.0	8.3	-	+6000	-	-	RNP1
004	TF	KINKO	-	349 (342.3)	-7.0	25.7	-	-	-	-	RNP1

CHANGE : Navigation Specification(Basic RNP1 → RNP1).

STANDARD ARRIVAL CHART - INSTRUMENT

RJFG / TANEGASHIMA

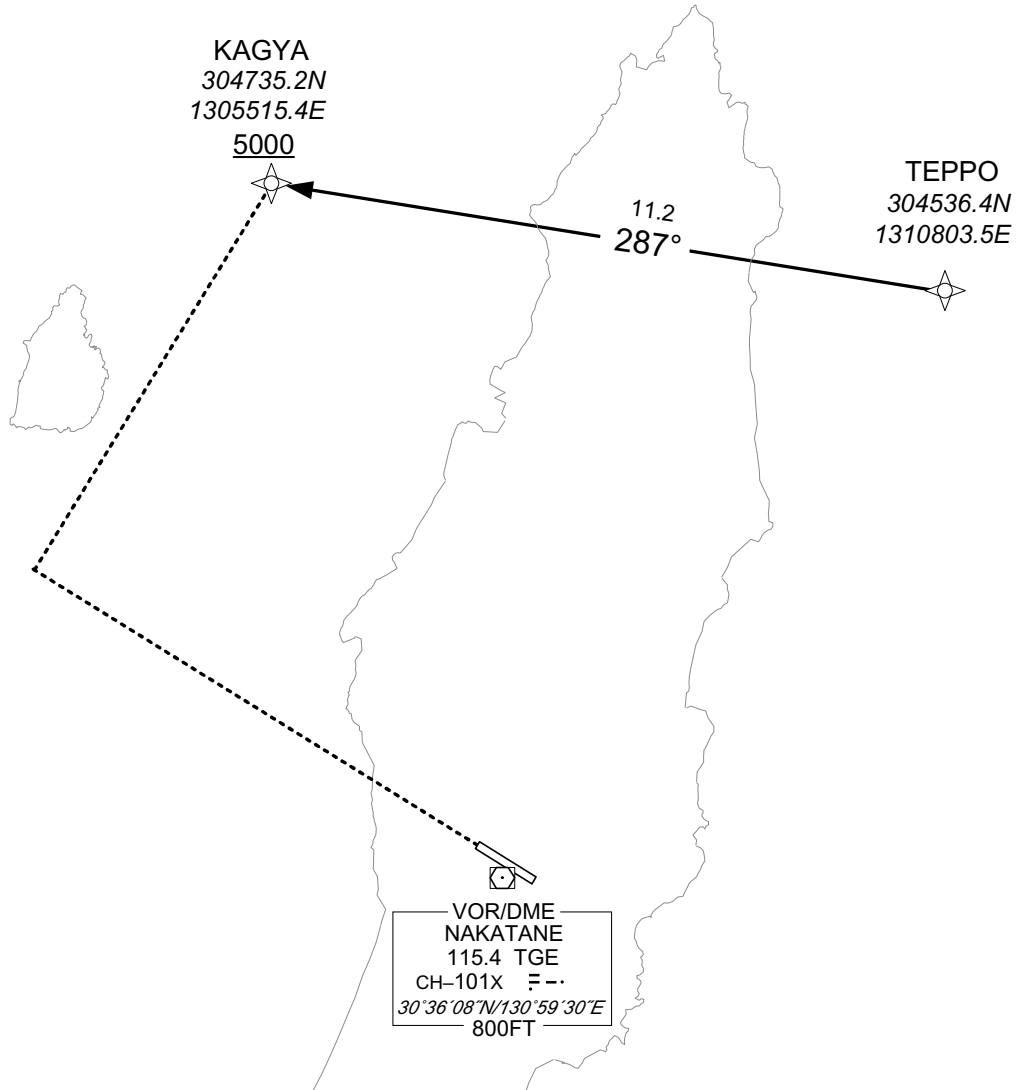
RNAV STAR RWY13

TEPPO ARRIVAL

RNP1

Note GNSS required.

VAR 7°W



CHANGE : Navigation Specification(Basic RNP1 → RNP1).

From TEPPO, to KAGYA at or above 5000FT.

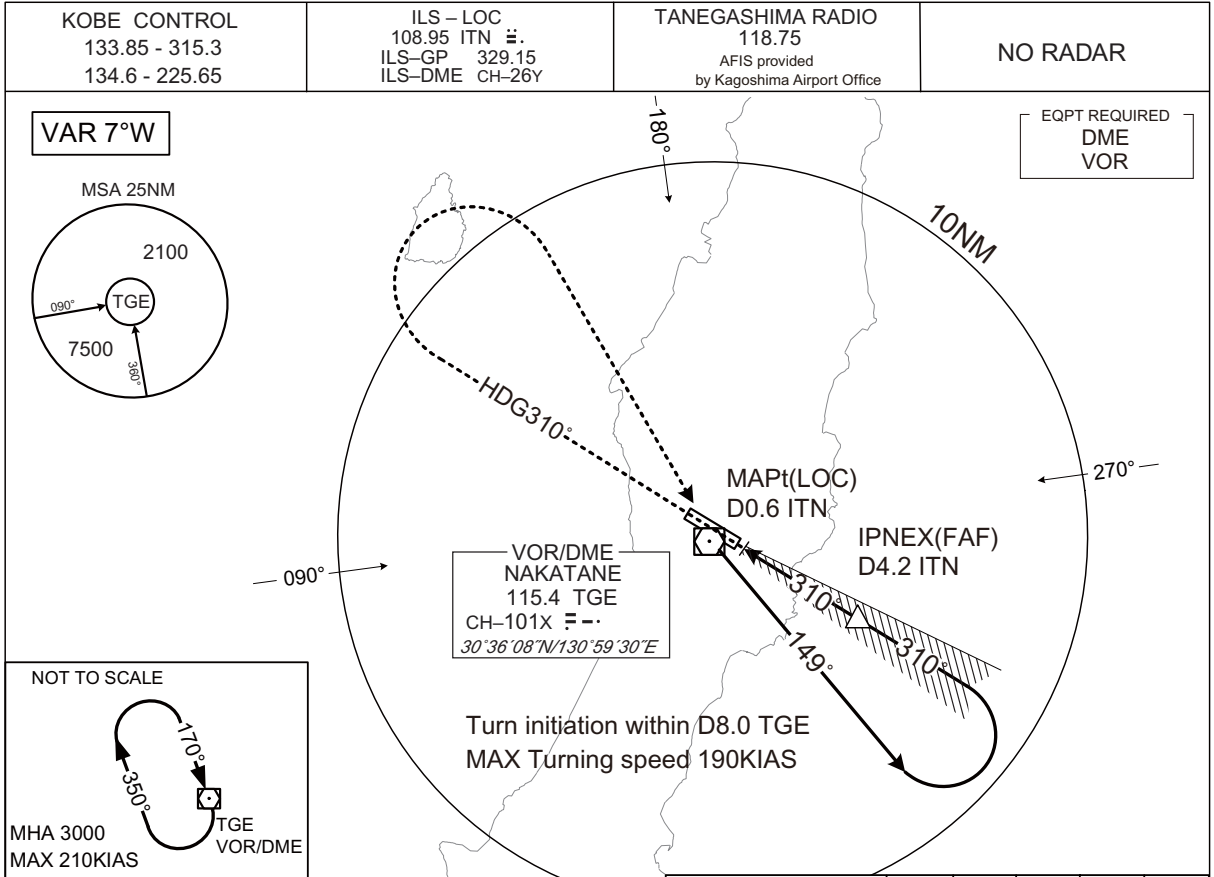
Serial Number	Path Descriptor	Waypoint Identifier	Fly Over	Course °M(°T)	Magnetic Variation	Distance (NM)	Turn Direction	Altitude (FT)	Speed (KIAS)	Vertical Angle	Navigation Specification
001	IF	TEPPO	—	—	-7.0	—	—	—	—	—	RNP1
002	TF	KAGYA	—	287 (280.3)	-7.0	11.2	—	+5000	—	—	RNP1

INTENTIONALLY LEFT BLANK

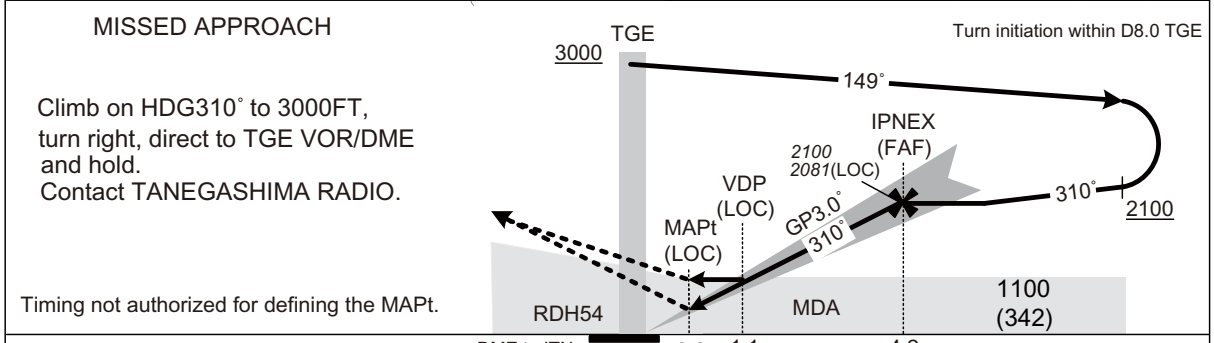
INSTRUMENT APPROACH CHART

RJFG / TANEGASHIMA

ILS Z or LOC RWY31



IPNEX(FAF) : 303349.91N / 1310354.58E	NM to ITN	MAPt	2	3	4	FAF
	ALT (3.0° APCH Path)	-	1392	1711	2029	2081



DME to ITN	0.2	0.6	1.1	4.2
NM to THR	0	0.5	1.0	4.0

Missed APCH climb gradient MNM 4.0%

MINIMA		THR elev. 758		AD elev. 768		
CAT	CAT I		LOC		CIRCLING	
	DA(H)	RVR/CMV	MDA(H)	RVR/CMV	MDA(H)	VIS
A	958(200)	550	1100(342)	900	1500(732)	1600
B				1000		
C				1800(1032)	2400	
D				1400	3200	

MINIMA with Missed APCH climb gradient of 2.5% are not established.
Circling to NORTH side of RWY only.

CHANGE : PROC renamed.

INSTRUMENT APPROACH CHART

RJFG / TANEGASHIMA

ILS Y RWY31

KOBE CONTROL 133.85 - 315.3 134.6 - 225.65	ILS - LOC 108.95 ITN 3.0 ILS-GP 329.15 ILS-DME CH-26Y	TANEGASHIMA RADIO 118.75 AFIS provided by Kagoshima Airport Office	NO RADAR
---	---	--	-----------------

VAR 7°W

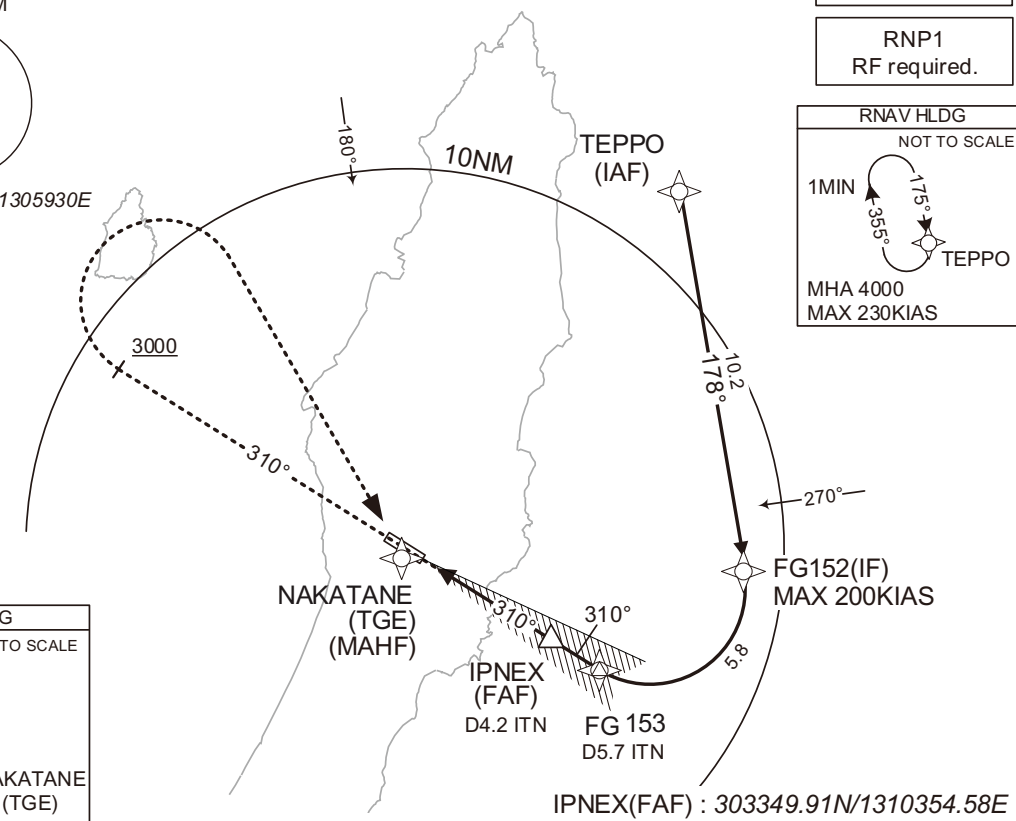
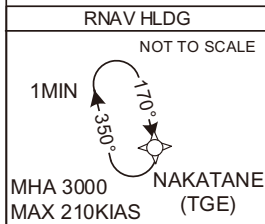
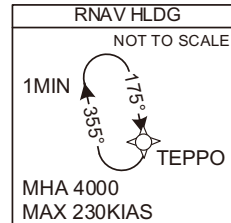
MSA 25NM



ARP : 303618N / 1305930E

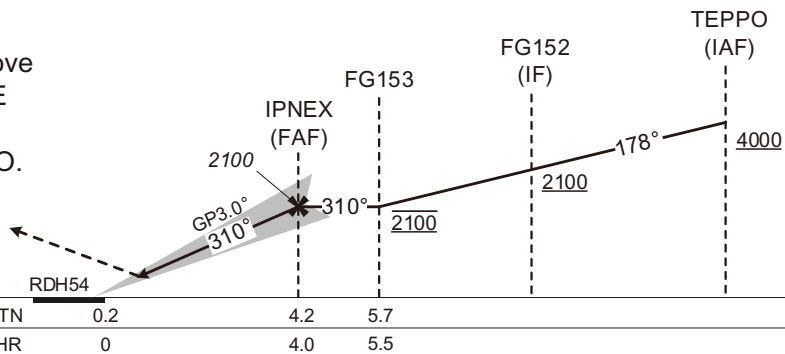
EQPT REQUIRED
DME

RNP1
RF required.



MISSED APPROACH

Climb on course 310°, at or above 3000FT turn right, direct to TGE and hold at 3000FT.
Contact TANEGASHIMA RADIO.



Missed APCH climb gradient MNM 4.0%

MINIMA		THR elev. 758	AD elev. 768	
CAT	CAT I		CIRCLING	
	DA(H)	RVR/CMV	MDA(H)	VIS
A	958(200)	550	1500(732)	1600
B			1800(1032)	2400
C				3200
D				

MINIMA with Missed APCH climb gradient of 2.5% are not established.
Circling to NORTH side of RWY only.

CHANGE : Navigation Specification(Basic RNP1 → RNP1).

INSTRUMENT APPROACH CHART

RJFG / TANEGASHIMA

ILS Y RWY31

Coding Table

Serial Number	Path Descriptor	Waypoint Identifier	Fly Over	Course °M(°T)	Magnetic Variation	Distance (NM)	Turn Direction	Altitude (FT)	Speed (KIAS)	Vertical Angle	Navigation Specification
001	IF	TEPPO	-	-	-7.0	-	-	+4000	-	-	RNP1
002	TF	FG152	-	178 (171.4)	-7.0	10.2	-	+2100	-200	-	RNP1
003	RF Center: FGRF1 r=2.51NM	FG153	-	-	-7.0	5.8	R	2100	-	-	RNP1
001	CA	-	-	310 (303.0)	-7.0	-	-	+3000	-	-	RNP1
002	DF	TGE	-	-	-7.0	-	R	3000	-	-	RNP1

Path	Waypoint Identifier	Inbound Course °M(°T)	Magnetic Variation	Outbound Time (MIN)	Turn Direction	Minimum Altitude (FT)	Maximum Altitude (FT)	Speed (KIAS)	Navigation Specification
Hold	TEPPO	175 (168.4)	-7.0	1.0 (-14000)	R	4000	FL140	-230 (-14000)	RNP1
Hold	TGE	170 (163.3)	-7.0	1.0 (-14000)	R	3000	FL140	-210 (-14000)	RNP1

Waypoint Coordinates

Waypoint Identifier	Coordinates	RF Arc Center Identifier	Coordinates
TEPPO	304536.42N / 1310803.50E	FGRF1	303507.53N / 1310656.98E
FG152	303530.12N / 1310949.53E		
FG153	303300.85N / 1310522.05E		
TGE	303607.76N / 130.5929.52E		

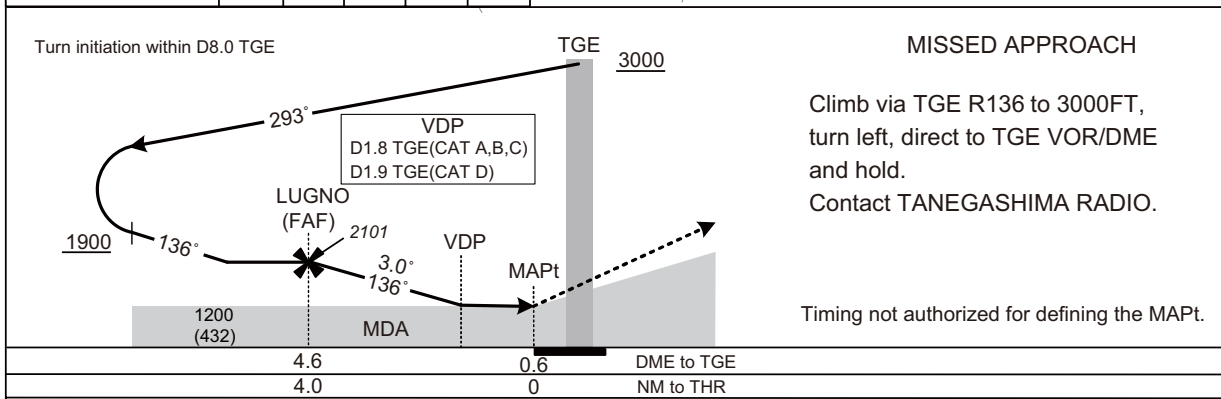
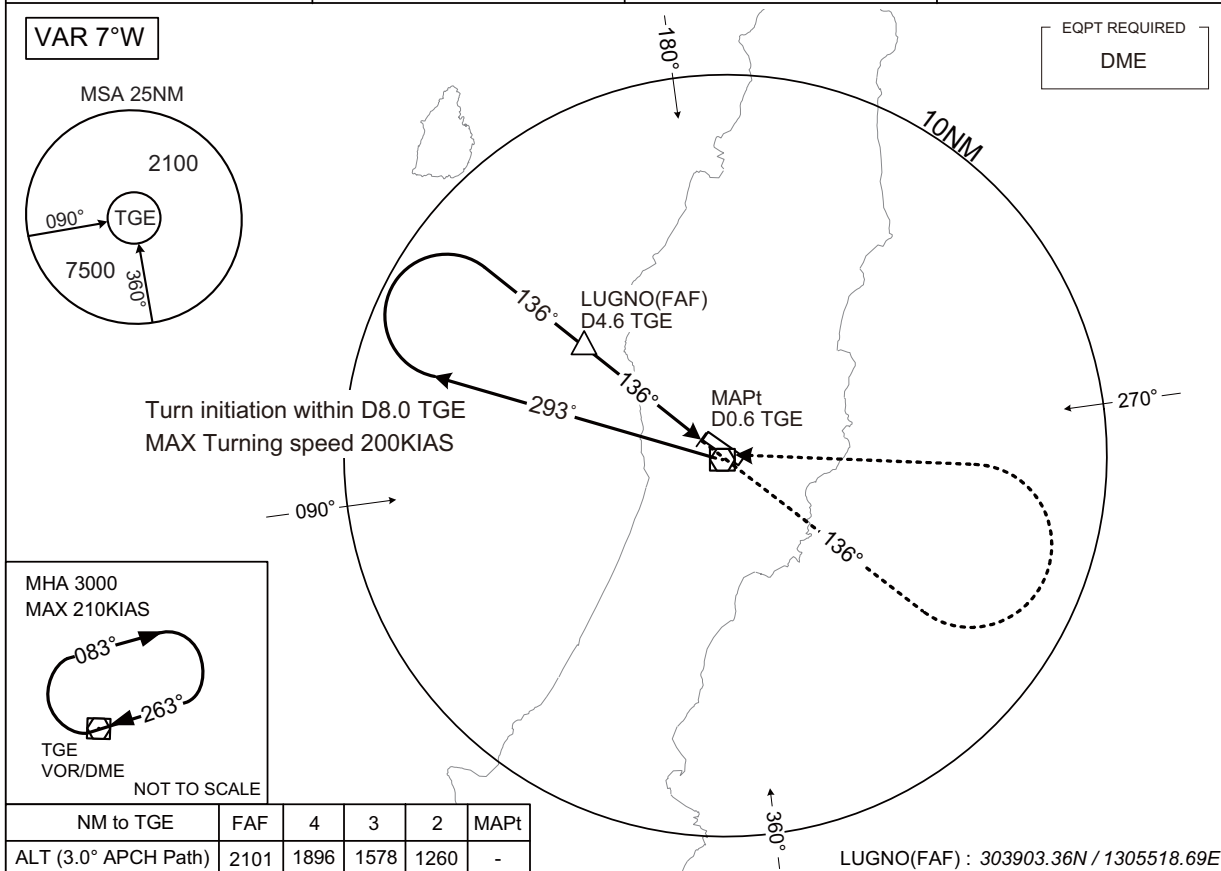
CHANGE : Navigation Specification(Basic RNP1 → RNP1).

INSTRUMENT APPROACH CHART

RJFG / TANEGASHIMA

VOR RWY13

KOBE CONTROL 133.85 - 315.3 134.6 - 225.65	NAKATANE VOR/DME 115.4 TGE $\overline{--}$ CH - 101X 30°36'08"N/130°59'30"E	TANEGASHIMA RADIO 118.75 AFIS provided by Kagoshima Airport Office	NO RADAR
---	---	--	-----------------



Missed APCH climb gradient MNM 5.0%

MINIMA		THR elev. 778	AD elev. 768	
CAT	MDA(H)		CIRCLING	
	MDA(H)	CMV	MDA(H)	VIS
A	1160(392)	1200	1500(732)	1600
B		1300		
C	1180(412)	1400	1800(1032)	2400
D	1200(432)	1600		3200

MINIMA with Missed APCH climb gradient of 2.5% are not established.
Circling to NORTH side of RWY only.

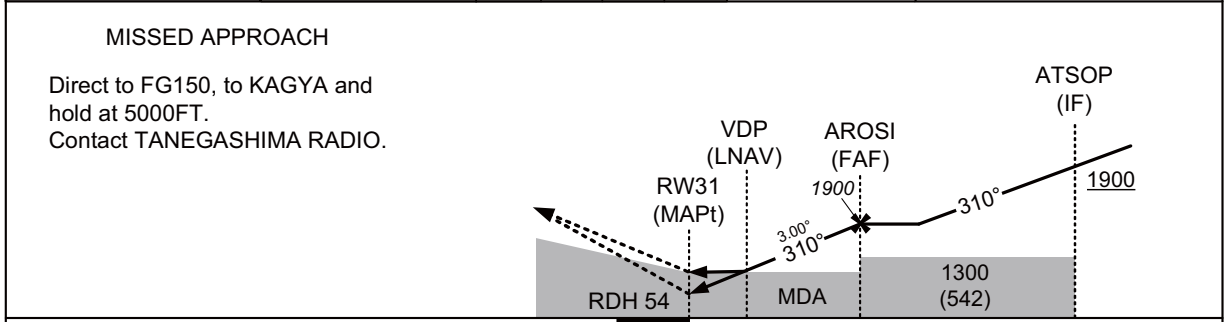
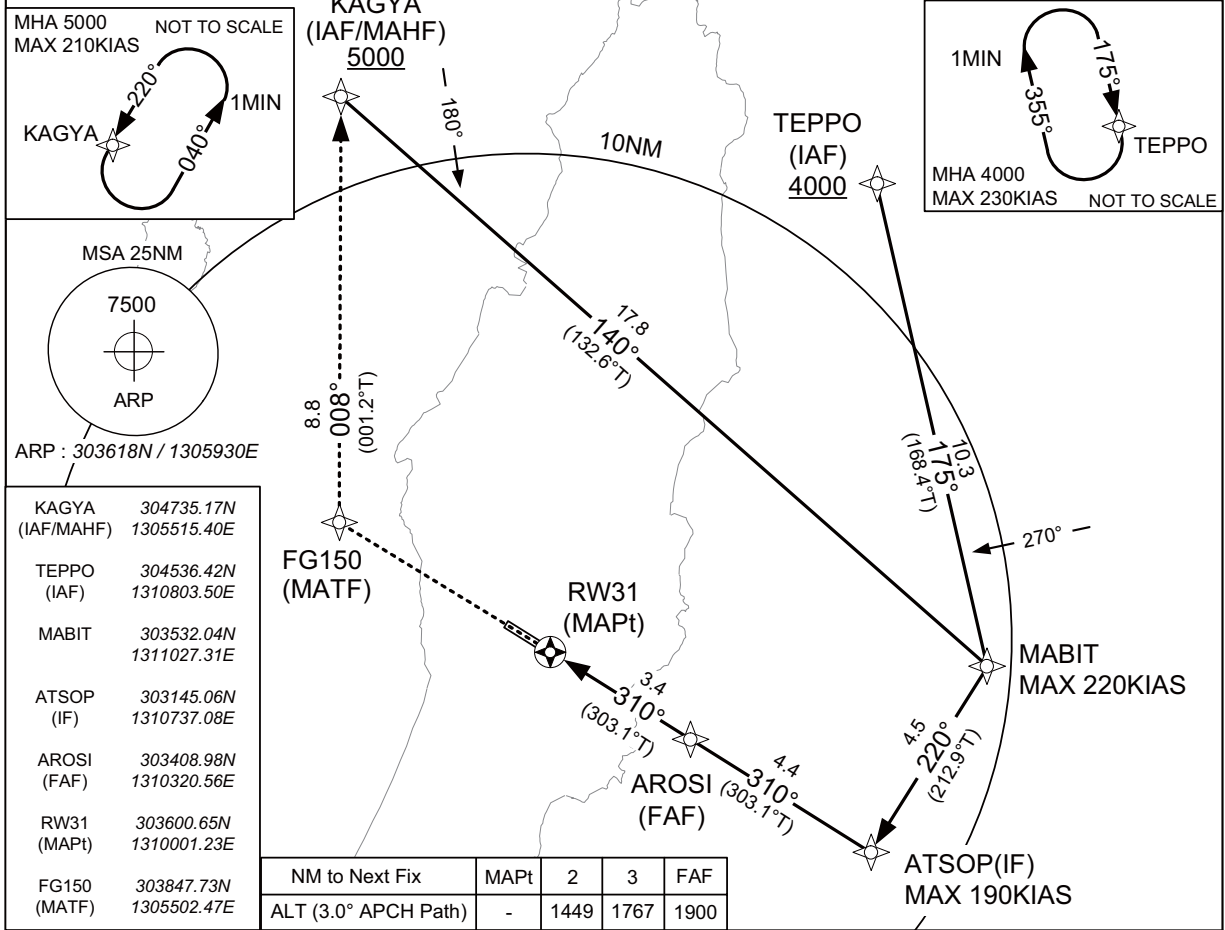
INSTRUMENT APPROACH CHART

RJFG / TANEGASHIMA

RNP RWY31

KOBE CONTROL 133.85 - 315.3 134.6 - 225.65	RNP APCH MSAS CH88975 M31A	TANEGASHIMA RADIO 118.75 AFIS provided by Kagoshima Airport Office	NO RADAR
--	----------------------------------	---	----------

VAR 7°W Baro-VNAV not authorized below -5°C



Missed APCH climb gradient MNM 5.0%

CAT	LPV		LNAV/VNAV		LNAV		CIRCLING	
	DA(H)	RVR/CMV	DA(H)	RVR/CMV	MDA(H)	RVR/CMV	MDA(H)	VIS
A	1043(285)	800	1170(412)	900	1170(412)	900	1500(732)	1600
B	1053(295)			1000		1000		
C	1063(305)	1000	1400	1400	1400	1800(1032)	2400	
D	1073(315)	1400					3200	

MINIMA with Missed APCH climb gradient of 2.5% are not established.
Circling to NORTH side of RWY only.

INSTRUMENT APPROACH CHART

RJFG / TANEGASHIMA

RNP RWY31

FAS DATA BLOCK

Operation type	0	LTP/FTP ellipsoidal height	+02605
SBAS service provider identifier	2	FPAP latitude	303635.9110N
Airport identifier	RJFG	FPAP longitude	1305858.2130E
Runway	31	Threshold crossing height	00016.5
Approach performance designator	0	TCH units selector	1
Route indicator		Glide path angle	03.00
Reference path data selector	0	Course width at threshold	105.00
Reference path ID	M31A	∠ length offset	0000
LTP/FTP latitude	303600.6245N	HAL	40.0
LTP/FTP longitude	1310001.2545E	VAL	50.0
CRC remainder	2EE6E3AF		

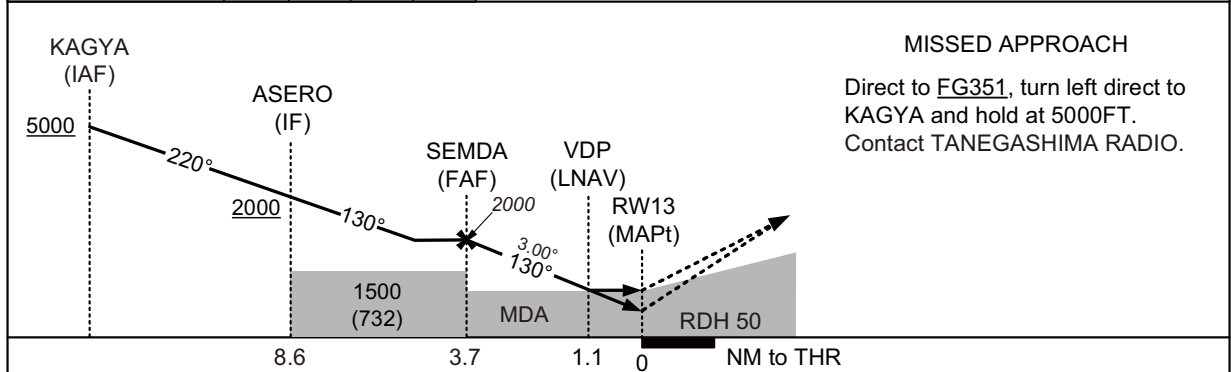
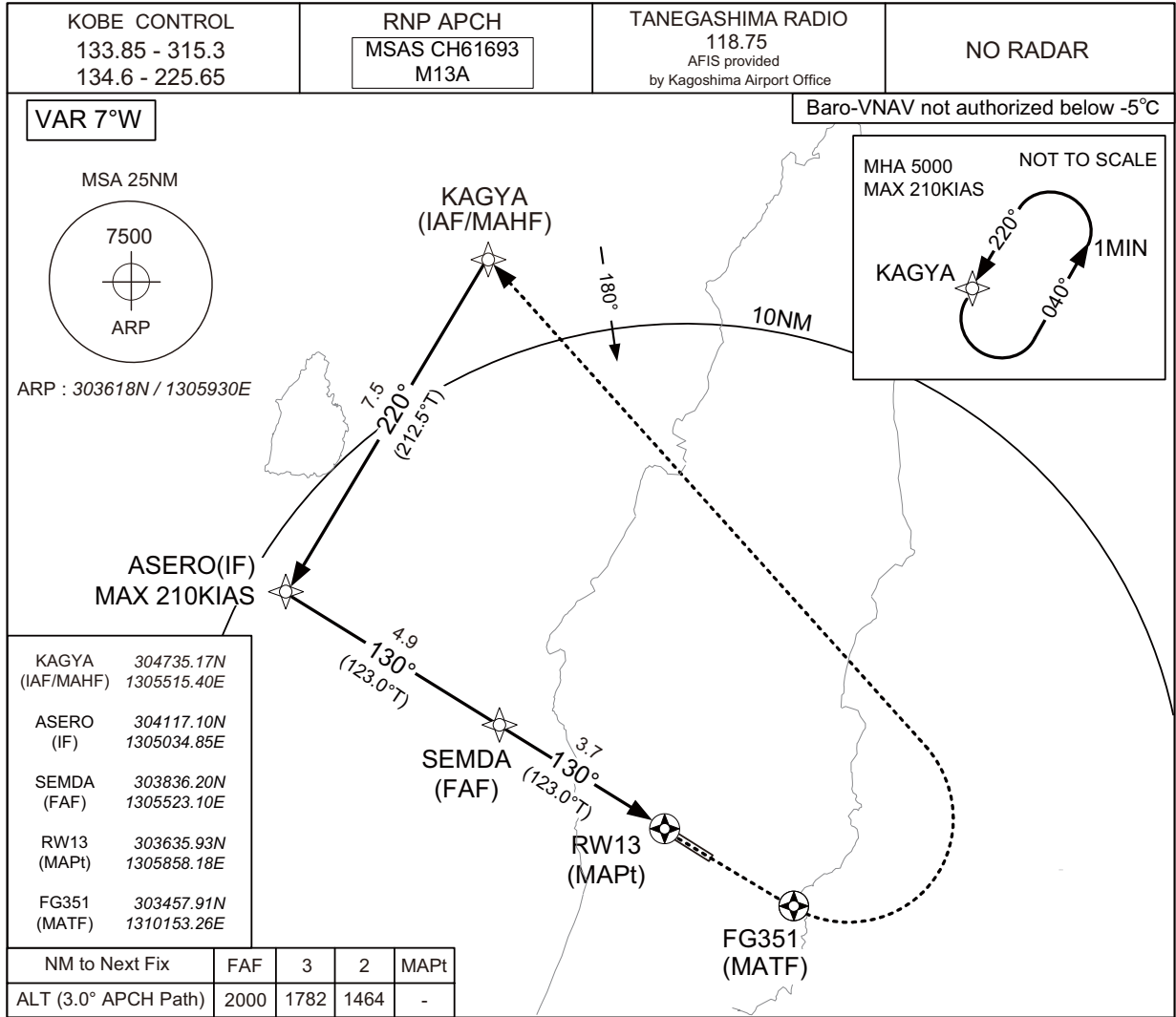
Required additional data

LTP/FTP orthometric height	231.2
----------------------------	-------

INSTRUMENT APPROACH CHART

RJFG / TANEGASHIMA

RNP RWY13



Missed APCH climb gradient MNM 5.0%

MINIMA		THR elev. 778		AD elev. 768				
CAT	LPV		LNAV/VNAV		LNAV		CIRCLING	
	DA(H)	CMV	DA(H)	CMV	MDA(H)	CMV	MDA(H)	VIS
A	1028(250)	1000	1160(382)	1200	1160(392)	1200	1500(732)	1600
B		1100		1300		1300		
C	1043(265)	1200		1400		1400		
D	1052(274)	1400		1600		1600		

MINIMA with Missed APCH climb gradient of 2.5% are not established.
Circling to NORTH side of RWY only.

INSTRUMENT APPROACH CHART

RJFG / TANEGASHIMA

RNP RWY13

FAS DATA BLOCK

Operation type	0	LTP/FTP ellipsoidal height	+02666
SBAS service provider identifier	2	FPAP latitude	303600.6245N
Airport identifier	RJFG	FPAP longitude	1310001.2545E
Runway	13	Threshold crossing height	00015.0
Approach performance designator	0	TCH units selector	1
Route indicator		Glide path angle	03.00
Reference path data selector	0	Course width at threshold	105.00
Reference path ID	M13A	∠ length offset	0000
LTP/FTP latitude	303635.9110N	HAL	40.0
LTP/FTP longitude	1305858.2130E	VAL	50.0
CRC remainder	1527D649		

Required additional data

LTP/FTP orthometric height	237.1
----------------------------	-------

RJFG / TANEGASHIMA

Visual REP



※図中に標高を示す数字がある場合、単位はメートル(m)である。The unit of measurement used to express elevation is meter(m).

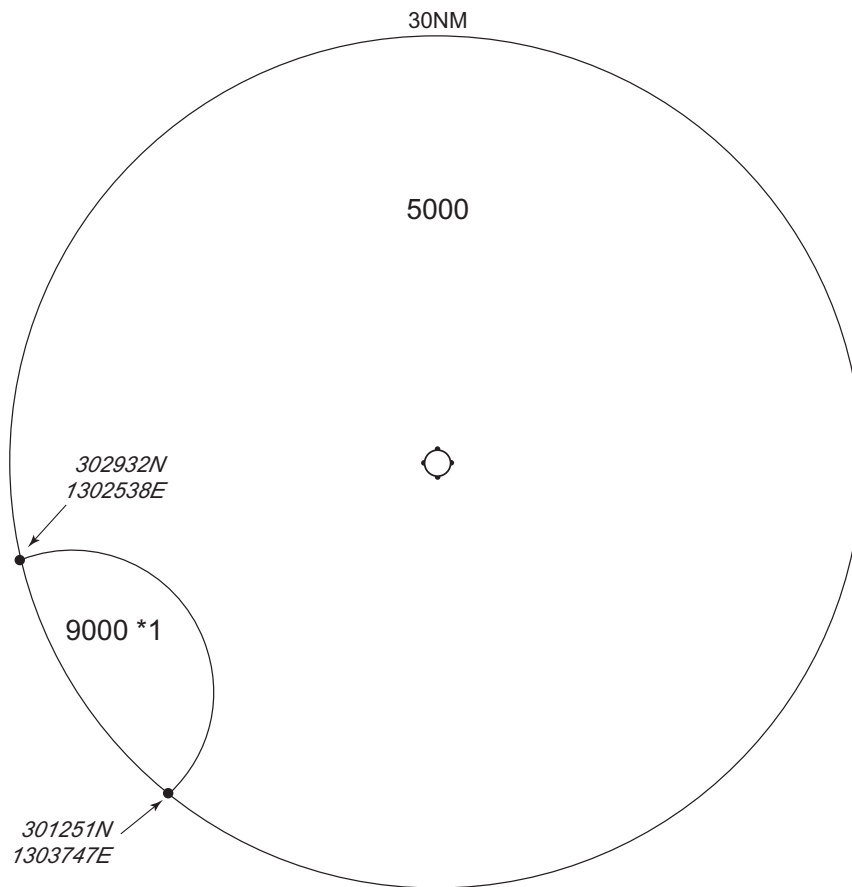
CHANGE : VAR.

Call sign	BRG / DIST from ARP	Remarks
喜志鹿崎 Kishigazaki	014°T / 14.2NM	灯台 Lighthouse
西之表 Nishinoomote	359°T / 7.5NM	西之表港 Harbor
10NM W	270°T / 10.0NM	海上 Over the sea
島間 Shimama	219°T / 10.6NM	港 Harbor
竹崎 Takezaki	187°T / 13.2NM	灯台 Lighthouse

RJFG / TANEGASHIMA

Minimum Vectoring Altitude CHART

CHANGE : Minimum vectoring altitude(6000→5000).



*1 : 302013N/1302957E RADIUS : 10NM

CENTER: 303618N/1305930E (ARP)