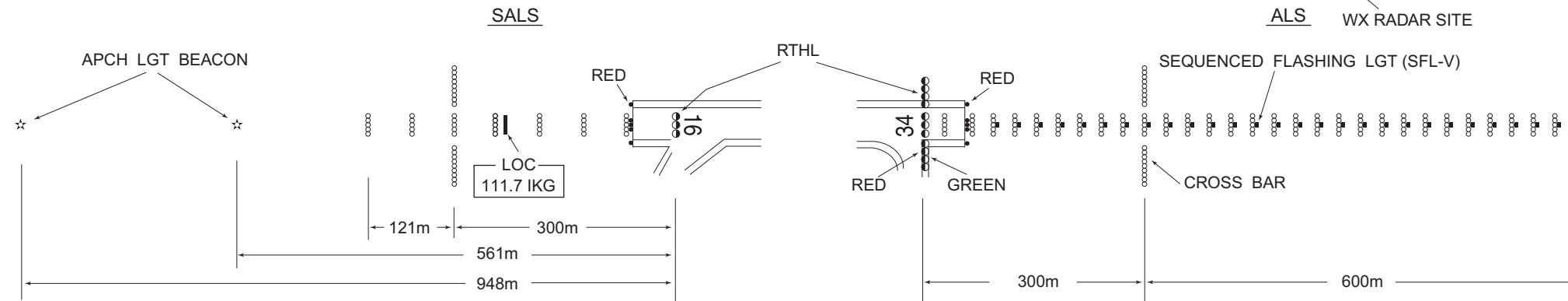
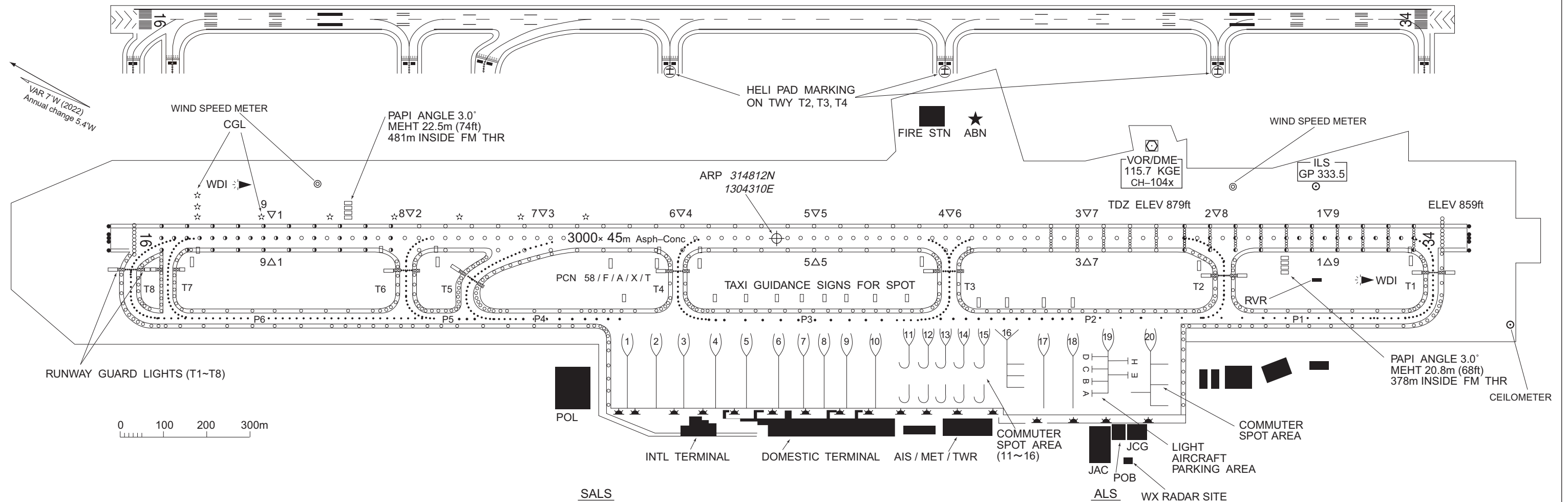
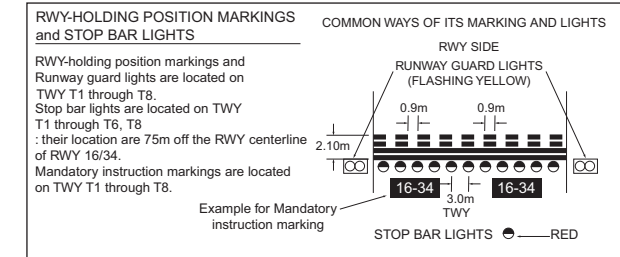


KAGOSHIMA AP
ELEV 271.6m(891ft) ARP

MARKING AIDS



CHANGE : TWY T7 installed. TWY T8 renamed.

RJFK / KAGOSHIMA

AD CHART

CHANGE : TWY T7 installed. TWY T8 renamed.

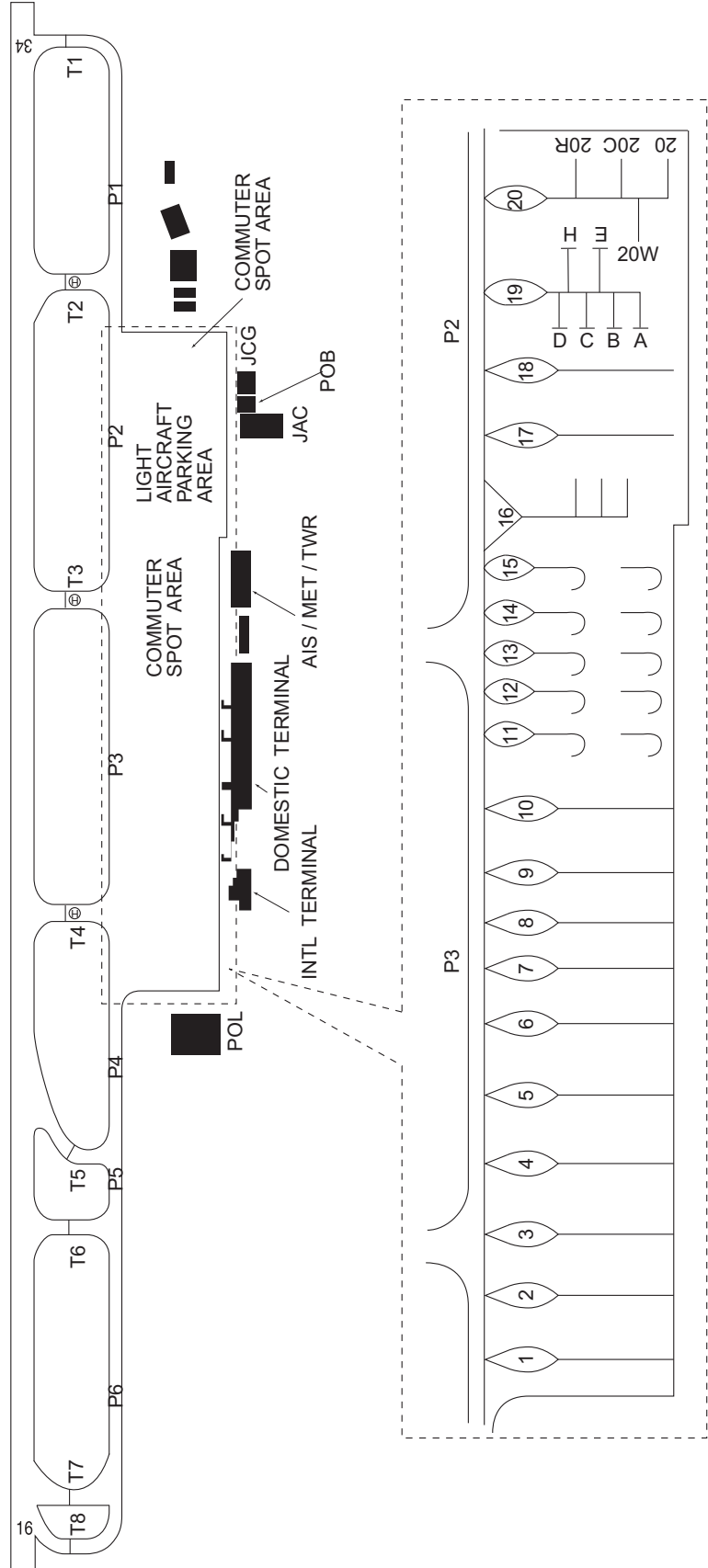
KAGOSHIMA AIRPORT

ELEV 271.6m(891ft) ARP

Designation	Call Sign	Frequency (MHz)
ATIS	Kagoshima Airport	127.05
DLVRY	Kagoshima Delivery	121.8
GND	Kagoshima Ground	121.7
TWR	Kagoshima Tower	118.2 126.2 261.2

VAR 7°W (2022)
Annual change 5.4°W

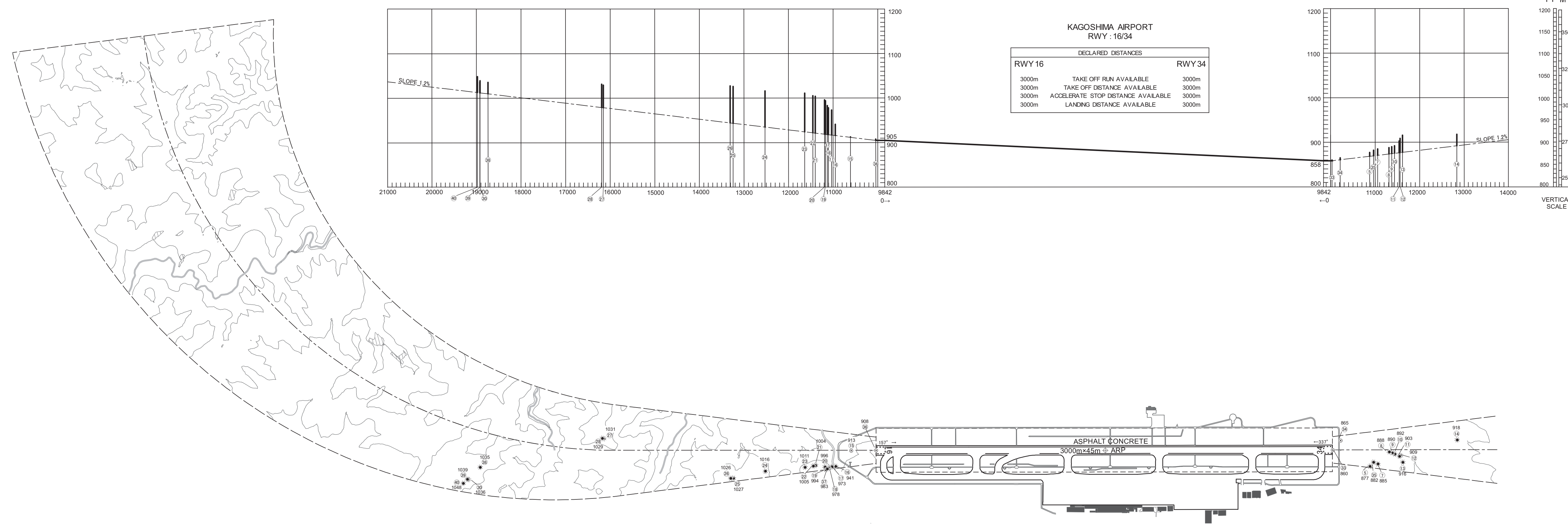
FIRE STN



DIMENSIONS AND ELEVATIONS IN FEET BEARINGS ARE MAGNETIC
Transverse Mercator Projection

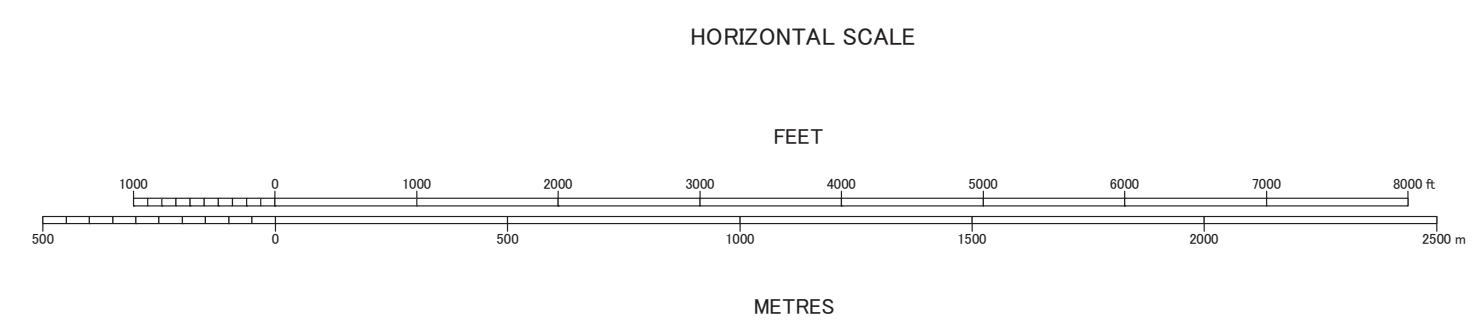
**AERODROME OBSTACLE CHART - ICAO
TYPE A (OPERATING LIMITATIONS)**

MAGNETIC VARIATION 7°W - OCT 2022



CHANGE : TWY T7 installed.

LEGEND	AMENDMENT RECORD		
	Nr	DATE	ENTERED BY
① IDENTIFICATION NUMBER			
⊙ POLE, TOWER, SPIRE, ANTENNA, ETC			
* TREE			
⋯ LEVEE			
⊕ RAILROAD			
⋯ RIVER			
⊕ TRANSMISSION LINE OR OVERHEAD CABLE			
△ TRIANGULATION POINT			
★ AERONAUTICAL GROUND LIGHT			
■ BUILDING OR LARGE STRUCTURE			
⋯ CONTOURS(M)			



測量法に基づく国土地理院長承認(使用) R 5.0h 223、国土数値情報(河川、築造輸送道路)

DIMENSIONS AND ELEVATIONS IN FEET BEARINGS ARE MAGNETIC
Transverse Mercator Projection

AERODROME OBSTACLE CHART-ICAO
TYPE B



CHANGE : TWY T7 installed.

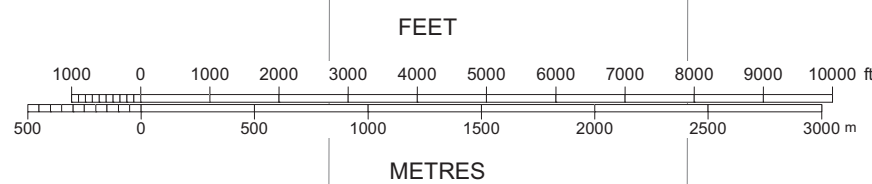
LEGEND

- ⊕ AERODROME REFERENCE POINT
31° 48' 2" N 130° 43' 10" E
- ⊙ POLE, TOWER, SPIRE, ANTENNA, ETC
- ★ AERONAUTICAL GROUND LIGHT
- ✳ OBSTRUCTION LIGHT
- BUILDING OR LARGE STRUCTURE
- ⊕ RAILROAD △ TRIANGULATION POINT
- ⊕ TRANSMISSION LINE OR OVERHEAD CABLE
- ▬ LEVEE
- ✳ TREE
- LAKE
- RIVER
- CONTOURS (ft)

AMENDMENT RECORD

Nr	DATE	ENTERED BY

HORIZONTAL SCALE



測量法に基づく国土地理院長承認(使用) R 5Jhs 223、国土数値情報(河川、湖沼、緊急輸送道路、鉄道)

STANDARD DEPARTURE CHART - INSTRUMENT

RJFK / KAGOSHIMA

SID and TRANSITION

CHANGE : OVSID ONE DEPARTURE established. KAJIKI TRANSITION established. PROC course(SASIK TRANSITION, KAGOSHIMA TRANSITION).
SOGIE THREE DEPARTURE, SAKURAJIMA TRANSITION abolished.

OVSID ONE DEPARTURE

RWY 16 : Climb RWY HDG to KGE2.0DME, turn left HDG 303° ...

RWY 34 : Climb RWY HDG to 2000FT, turn right...
... to intercept and proceed via KGE R348 to OVSID.

Note RWY16 : 5.0% climb gradient required up to 1300FT.

RWY34 : 5.0% climb gradient required up to 2000FT.

OBST ALT 1181FT located at 1.4NM 319° FM end of RWY34.

OBST ALT 2067FT located at 6.7NM 345° FM end of RWY34.

KAJIKI TRANSITION

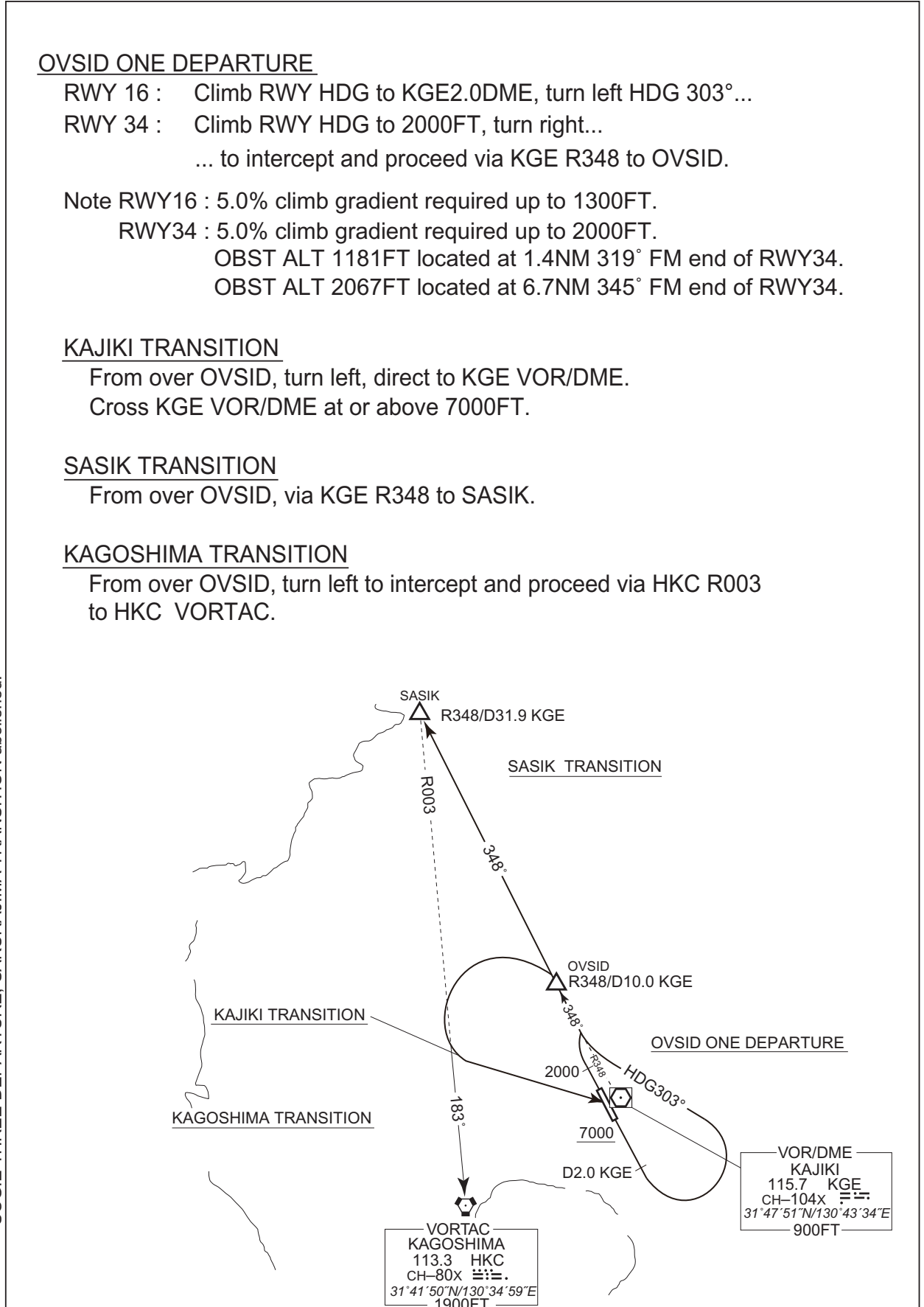
From over OVSID, turn left, direct to KGE VOR/DME.
Cross KGE VOR/DME at or above 7000FT.

SASIK TRANSITION

From over OVSID, via KGE R348 to SASIK.

KAGOSHIMA TRANSITION

From over OVSID, turn left to intercept and proceed via HKC R003 to HKC VORTAC.



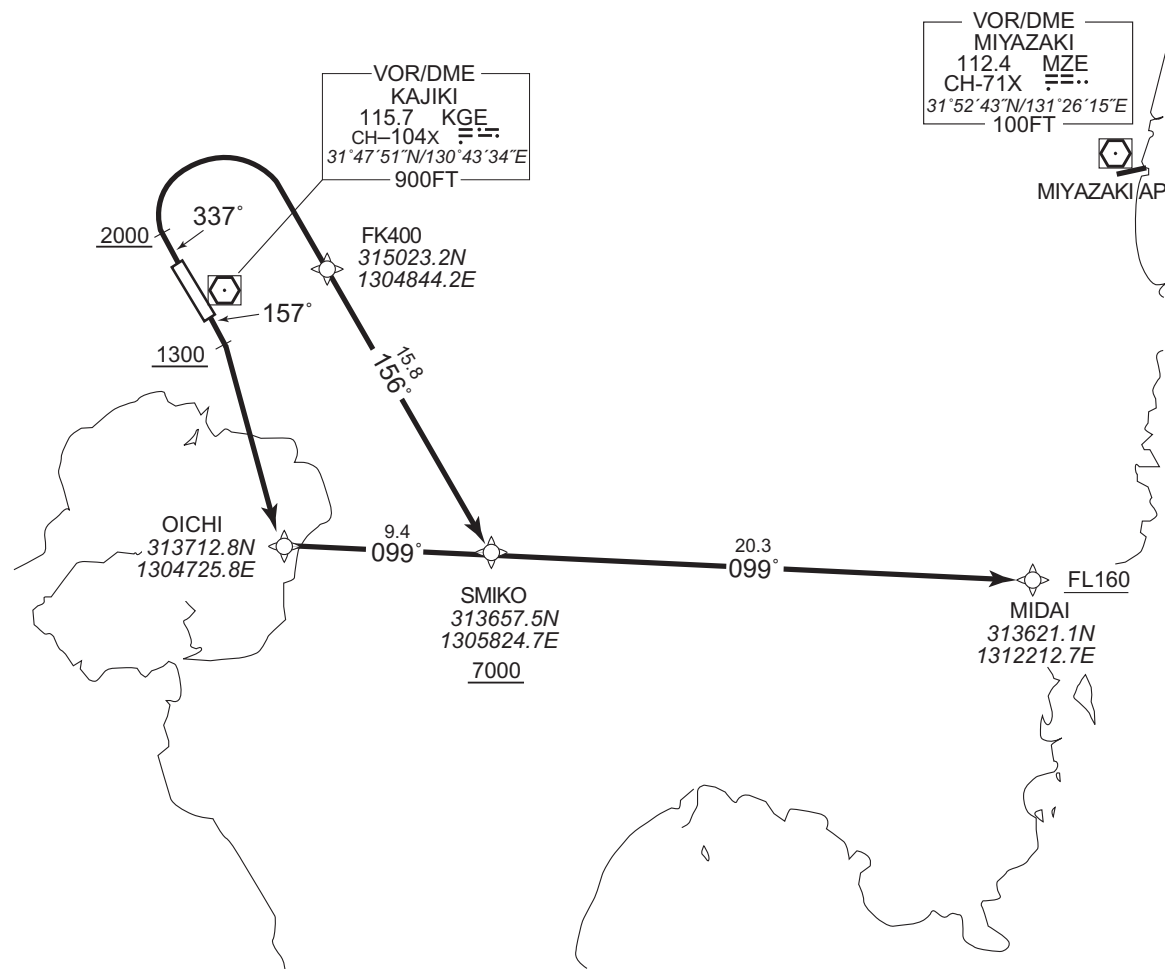
STANDARD DEPARTURE CHART - INSTRUMENT

RJFK / KAGOSHIMA

RNAV SID

MIDAI THREE DEPARTURE		RNAV 1
Note 1) DME/DME/IRU or GNSS required. ※The aircraft equipped with only DME/DME/IRU must be able to update its position without delay at the starting point of take-off roll. 2) RADAR service required.	Critical DME	RWY16 : HKC:7NM to OICHI — 2NM to OICHI KGE:7NM to OICHI — 2NM to OICHI
	DME GAP	RWY16 : DER — 7NM to OICHI RWY34 : DER — 12NM to SMIKO
	Inappropriate Nav aids	See AD 1.1.6.10.3. Inappropriate NAV AIDs for RNAV1

VAR 7°W



RWY16 : Climb on HDG 157° at or above 1300FT, turn right direct to OICHI, to SMIKO at or above 7000FT, to MIDAI at or above FL160.

RWY34 : Climb on HDG 337° at or above 2000FT, turn right direct to FK400, to SMIKO at or above 7000FT, to MIDAI at or above FL160.

Note RWY34 : 5.0% climb gradient required up to 3100FT.
OBST ALT 3117FT located at 7.7NM 046° FM end of RWY34.

STANDARD DEPARTURE CHART - INSTRUMENT

RJFK / KAGOSHIMA

RNAV SID

MIDAI THREE DEPARTURE

RWY16

Serial Number	Path Descriptor	Waypoint Identifier	Fly Over	Course °M(°T)	Magnetic Variation	Distance (NM)	Turn Direction	Altitude (FT)	Speed (KIAS)	Vertical Angle	Navigation Specification
001	VA	-	-	157 (150.1)	-7.2	-	-	+1300	-	-	RNAV1
002	DF	OICHI	-	-	-7.2	-	R	-	-	-	RNAV1
003	TF	SMIKO	-	099 (091.5)	-7.2	9.4	-	+7000	-	-	RNAV1
004	TF	MIDAI	-	099 (091.6)	-7.2	20.3	-	+FL160	-	-	RNAV1

RWY34

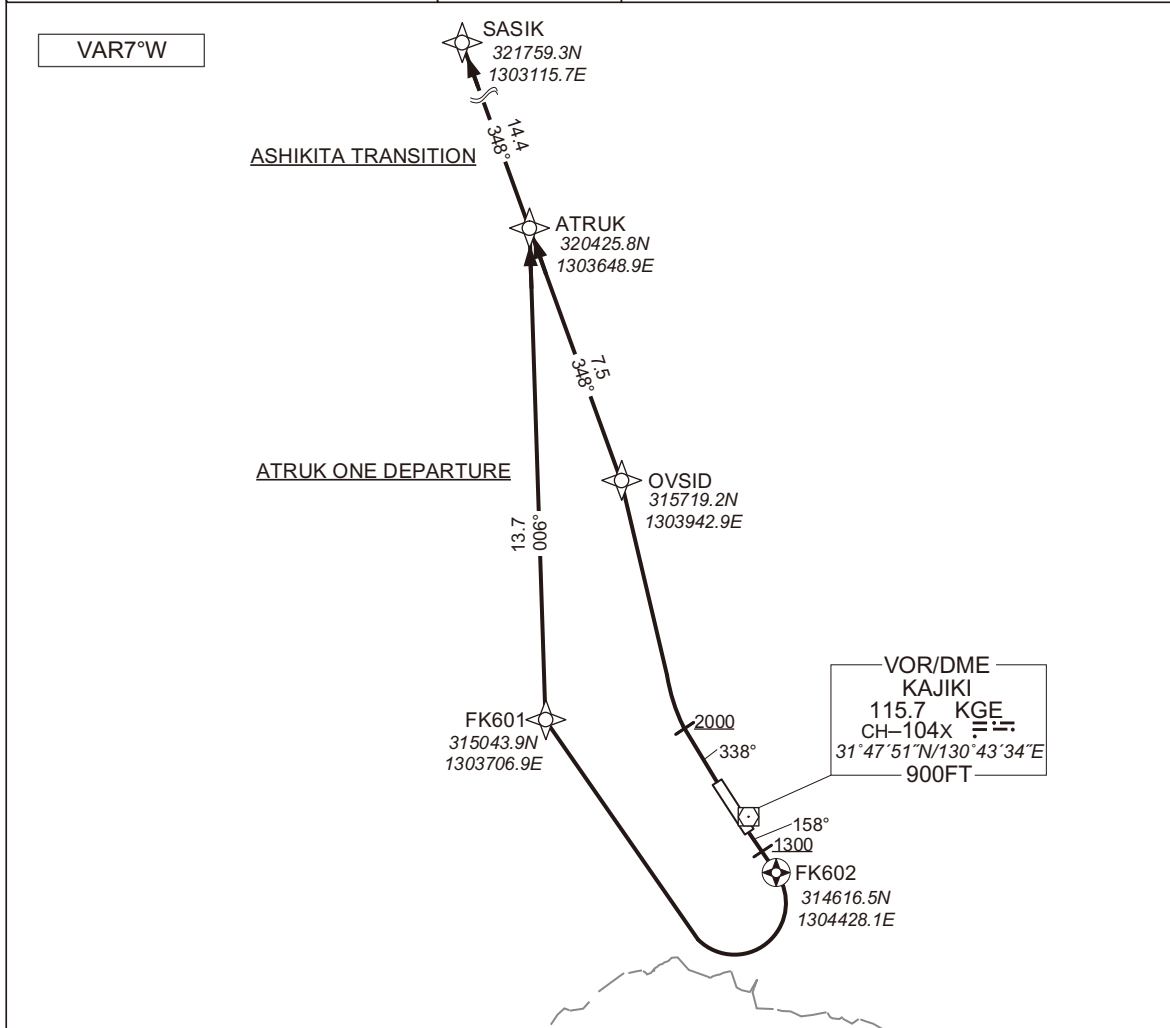
Serial Number	Path Descriptor	Waypoint Identifier	Fly Over	Course °M(°T)	Magnetic Variation	Distance (NM)	Turn Direction	Altitude (FT)	Speed (KIAS)	Vertical Angle	Navigation Specification
001	VA	-	-	337 (330.1)	-7.2	-	-	+2000	-	-	RNAV1
002	DF	FK400	-	-	-7.2	-	R	-	-	-	RNAV1
003	TF	SMIKO	-	156 (148.5)	-7.2	15.8	-	+7000	-	-	RNAV1
004	TF	MIDAI	-	099 (091.6)	-7.2	20.3	-	+FL160	-	-	RNAV1

STANDARD DEPARTURE CHART - INSTRUMENT

RJFK / KAGOSHIMA

RNAV SID and TRANSITION

ATRUK ONE DEPARTURE ASHIKITA TRANSITION		RNAV1
Note 1) DME/DME/IRU or GNSS required. ※The aircraft equipped with only DME/DME/IRU must be able to update its position without delay at the starting point of take-off roll. 2) RADAR service required.	Critical DME	RWY16 : HKC 6.0NM to FK601 - FK601 11.0NM to ATRUK - 4.0NM to ATRUK KGE 6.0NM to FK601 - 5.0NM to FK601 4.0NM to FK601 - 4.0NM to ATRUK MZE 6.0NM to FK601 - 4.0NM to FK601 3.0NM to ATRUK - 1.0NM to ATRUK RWY34 : HKC 3.0NM from DER - 5.0NM to ATRUK KGE 5.0NM to OVSID - 3.0NM to OVSID 1.0NM to OVSID - 5.0NM to ATRUK MZE 3.0NM to ATRUK - 1.0NM to ATRUK
	DME GAP	RWY16 : DER - 6.0NM to FK601 RWY34 : DER - 3.0NM from DER
	Inappropriate Nav aids	See AD1.1.6.10.3 Inappropriate NAVAIDs for RNAV1



ATRUK ONE DEPARTURE
 RWY16 : Climb on HDG158° at or above 1300FT, direct to FK602, turn right direct to FK601, to ATRUK.
 RWY34 : Climb on HDG338° at or above 2000FT, turn right direct to OVSID, to ATRUK.

Note RWY16 : 7.0% climb gradient required up to 2000FT.
 OBST ALT 896FT located at 0.6NM 141° FM end of RWY16.

Note RWY34 : 5.0% climb gradient required up to 2000FT.
 OBST ALT 1181FT located at 1.4NM 319° FM end of RWY34.
 OBST ALT 2067FT located at 6.7NM 345° FM end of RWY34.

ASHIKITA TRANSITION
 From ATRUK, to SASIK.

CHANGE : New PROC.

STANDARD DEPARTURE CHART - INSTRUMENT

RJFK / KAGOSHIMA

RNAV SID and TRANSITION

ATRUK ONE DEPARTURE

RWY16

Serial Number	Path Descriptor	Waypoint Identifier	Fly Over	Course °M(°T)	Magnetic Variation	Distance (NM)	Turn Direction	Altitude (FT)	Speed (KIAS)	Vertical Angle	Navigation Specification
001	VA	-	-	158 (150.1)	-7.4	-	-	+1300	-	-	RNAV1
002	DF	FK602	Y	-	-7.4	-	-	-	-	-	RNAV1
003	DF	FK601	-	-	-7.4	-	R	-	-	-	RNAV1
004	TF	ATRUK	-	006 (358.9)	-7.4	13.7	-	-	-	-	RNAV1

RWY34

Serial Number	Path Descriptor	Waypoint Identifier	Fly Over	Course °M(°T)	Magnetic Variation	Distance (NM)	Turn Direction	Altitude (FT)	Speed (KIAS)	Vertical Angle	Navigation Specification
001	VA	-	-	338 (330.1)	-7.4	-	-	+2000	-	-	RNAV1
002	DF	OVSID	-	-	-7.4	-	R	-	-	-	RNAV1
003	TF	ATRUK	-	348 (340.9)	-7.4	7.5	-	-	-	-	RNAV1

ASHIKITA TRANSITION

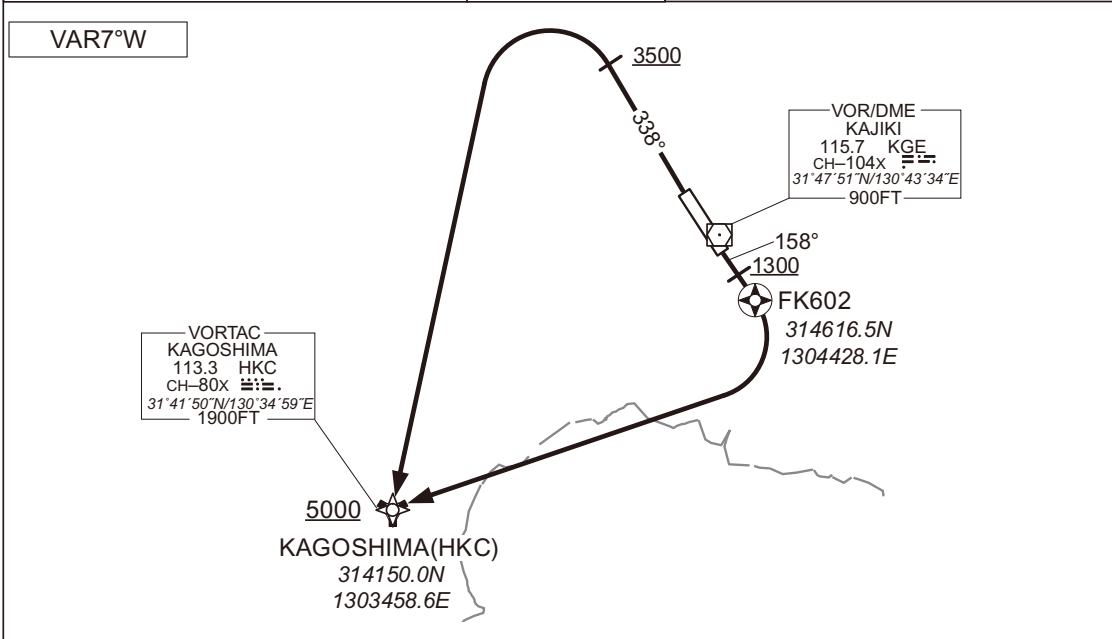
Serial Number	Path Descriptor	Waypoint Identifier	Fly Over	Course °M(°T)	Magnetic Variation	Distance (NM)	Turn Direction	Altitude (FT)	Speed (KIAS)	Vertical Angle	Navigation Specification
001	IF	ATRUK	-	-	-7.4	-	-	-	-	-	RNAV1
002	TF	SASIK	-	348 (340.9)	-7.4	14.4	-	-	-	-	RNAV1

CHANGE : New PROC.

STANDARD DEPARTURE CHART - INSTRUMENT

RJFK / KAGOSHIMA RNAV SID

MIZOBE ONE DEPARTURE	RNAV1
Note 1) DME/DME/IRU or GNSS required. ※The aircraft equipped with only DME/DME/IRU must be able to update its position without delay at the starting point of take-off roll. 2) RADAR service required.	Critical DME
	RWY16 : HKC 9.0NM to HKC - 3.0NM to HKC KGE 9.0NM to HKC - HKC SGE 3.0NM to HKC - HKC RWY34 : HKC 2.0NM from DER - 14.0NM to HKC KGE 2.0NM from DER - 9.0NM to HKC 7.0NM to HKC - 6.0NM to HKC 4.0NM to HKC - 2.0NM to HKC SGE 3.0NM to HKC - HKC
	DME GAP
	RWY16 : DER - 9.0NM to HKC RWY34 : DER - 2.0NM from DER
	Inappropriate NavAids
	See AD1.1.6.10.3 Inappropriate NAVAIDs for RNAV1



RWY16 : Climb on HDG158° at or above 1300FT, direct to FK602, turn right direct to HKC at or above 5000FT.
 RWY34 : Climb on HDG338° at or above 3500FT, tum left direct to HKC at or above 5000FT.

Note RWY16 : 7.0% climb gradient required up to 2000FT.
 OBST ALT 890FT located at 0.6NM 154° FM end of RWY16.
 Note RWY34 : 5.0% climb gradient required up to 3500FT.
 OBST ALT 1181FT located at 1.4NM 319° FM end of RWY34.
 OBST ALT 2067FT located at 6.7NM 345° FM end of RWY34.

RWY16

Serial Number	Path Descriptor	Waypoint Identifier	Fly Over	Course °M(°T)	Magnetic Variation	Distance (NM)	Turn Direction	Altitude (FT)	Speed (KIAS)	Vertical Angle	Navigation Specification
001	VA	-	-	158 (150.1)	-7.4	-	-	+1300	-	-	RNAV1
002	DF	FK602	Y	-	-7.4	-	-	-	-	-	RNAV1
003	DF	HKC	-	-	-7.4	-	R	+5000	-	-	RNAV1

RWY34

Serial Number	Path Descriptor	Waypoint Identifier	Fly Over	Course °M(°T)	Magnetic Variation	Distance (NM)	Turn Direction	Altitude (FT)	Speed (KIAS)	Vertical Angle	Navigation Specification
001	VA	-	-	338 (330.1)	-7.4	-	-	+3500	-	-	RNAV1
002	DF	HKC	-	-	-7.4	-	L	+5000	-	-	RNAV1

CHANGE : New PROC.

STANDARD ARRIVAL CHART -INSTRUMENT

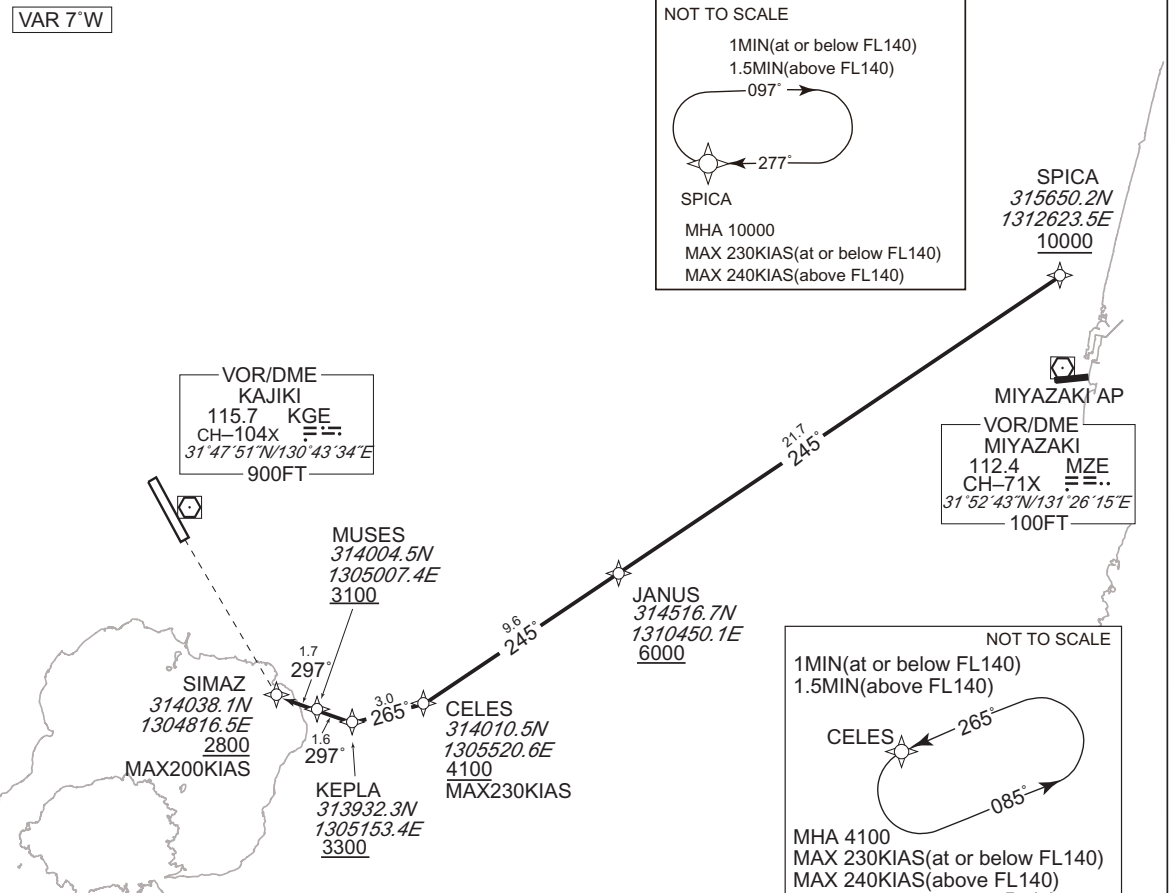
RJFK / KAGOSHIMA

RNAV STAR RWY34

SIMAZ EAST ARRIVAL

RNAV 1

Note 1) DME/DME/IRU or GNSS required.
2) RADAR service required.



From SPICA at or above 10000FT, to JANUS at or above 6000FT, to CELES at or above 4100FT, to KEPLA at or above 3300FT, to MUSES at or above 3100FT, to SIMAZ at above 2800FT.

Critical DME	-
DME GAP	-
Inappropriate Navaids	See AD1.1.6.10.3. Inappropriate NAVAIDs for RNAV1

CHANGE : RNAV HLDG established(SPICA).

Serial Number	Path Descriptor	Waypoint Identifier	Fly Over	Course °M(°T)	Magnetic Variation	Distance (NM)	Turn Direction	Altitude (FT)	Speed (KIAS)	Vertical Angle	Navigation Specification
001	IF	SPICA	-	-	-7.2	-	-	+10000	-	-	RNAV1
002	TF	JANUS	-	245 (237.8)	-7.2	21.7	-	+6000	-	-	RNAV1
003	TF	CELES	-	245 (237.8)	-7.2	9.6	-	+4100	-230	-	RNAV1
004	TF	KEPLA	-	265 (257.8)	-7.2	3.0	-	+3300	-	-	RNAV1
005	TF	MUSES	-	297 (289.6)	-7.2	1.6	-	+3100	-	-	RNAV1
006	TF	SIMAZ	-	297 (289.6)	-7.2	1.7	-	+2800	-200	-	RNAV1

Path	Waypoint Identifier	Inbound Course °M(°T)	Magnetic Variation	Outbound Time (MIN)	Turn Direction	Minimum Altitude (FT)	Maximum Altitude (FT)	Speed (KIAS)	Navigation Specification
Hold	SPICA	277 (270.1)	-7.4	1.0(-14000) 1.5(+14001)	R	10000	-	-230(-14000) -240(+14001)	RNAV1
Hold	CELES	265 (257.8)	-7.2	1.0(-14000) 1.5(+14001)	L	4100	-	-230(-14000) -240(+14001)	RNAV1

STANDARD ARRIVAL CHART -INSTRUMENT

RJFK / KAGOSHIMA

RNAV STAR RWY34

SIMAZ NORTH ARRIVAL

RNAV 1

Note 1) DME/DME/IRU or GNSS required.
2) RADAR service required.

VAR 7°W

VOR/DME
KAJIKI
115.7 KGE
CH-104X
31°47'51"N/130°43'34"E
900FT

VORTAC
KAGOSHIMA
113.3 HKC
CH-80X
31°41'50"N/130°34'59"E
1900FT

KAGOSHIMA(HKC)
314150.0N
1303458.6E
3500

ROKET
314004.5N
1304139.5E
3100

TOPPY
313908.0N
1304513.8E
MAX185KIAS

SIMAZ
314038.1N
1304816.5E
2800

NOT TO SCALE

MHA 5000
MAX 230KIAS(at or below FL140)
MAX 240KIAS(above FL140)

KAGOSHIMA (HKC)

115°
295°

1MIN(at or below FL140)
1.5MIN(above FL140)

CHANGE : RNAV HLDG established. HLDG for using NAVAID abolished(HKC).

From HKC at or above 3500FT, to ROKET at or above 3100FT, to TOPPY, to SIMAZ at or above 2800FT.

Critical DME	KGE : 3NM to ROKET - SIMAZ
DME GAP	HKC - 3NM to ROKET
Inappropriate Navaids	See AD1.1.6.10.3. Inappropriate NAVAIDS for RNAV1

Serial Number	Path Descriptor	Waypoint Identifier	Fly Over	Course °M(°T)	Magnetic Variation	Distance (NM)	Turn Direction	Altitude (FT)	Speed (KIAS)	Vertical Angle	Navigation Specification
001	IF	HKC	-	-	-6.9	-	-	+3500	-	-	RNAV1
002	TF	ROKET	-	114 (107.2)	-6.9	6.0	-	+3100	-	-	RNAV1
003	TF	TOPPY	-	114 (107.2)	-6.9	3.2	-	-	-185	-	RNAV1
004	TF	SIMAZ	-	067 (059.9)	-6.9	3.0	-	+2800	-	-	RNAV1

Path	Waypoint Identifier	Inbound Course °M(°T)	Magnetic Variation	Outbound Time (MIN)	Turn Direction	Minimum Altitude (FT)	Maximum Altitude (FT)	Speed (KIAS)	Navigation Specification
Hold	HKC	115 (107.1)	-7.4	1.0(-14000) 1.5(+14001)	R	5000	-	-230(-14000) -240(+14001)	RNAV1

STANDARD ARRIVAL CHART -INSTRUMENT

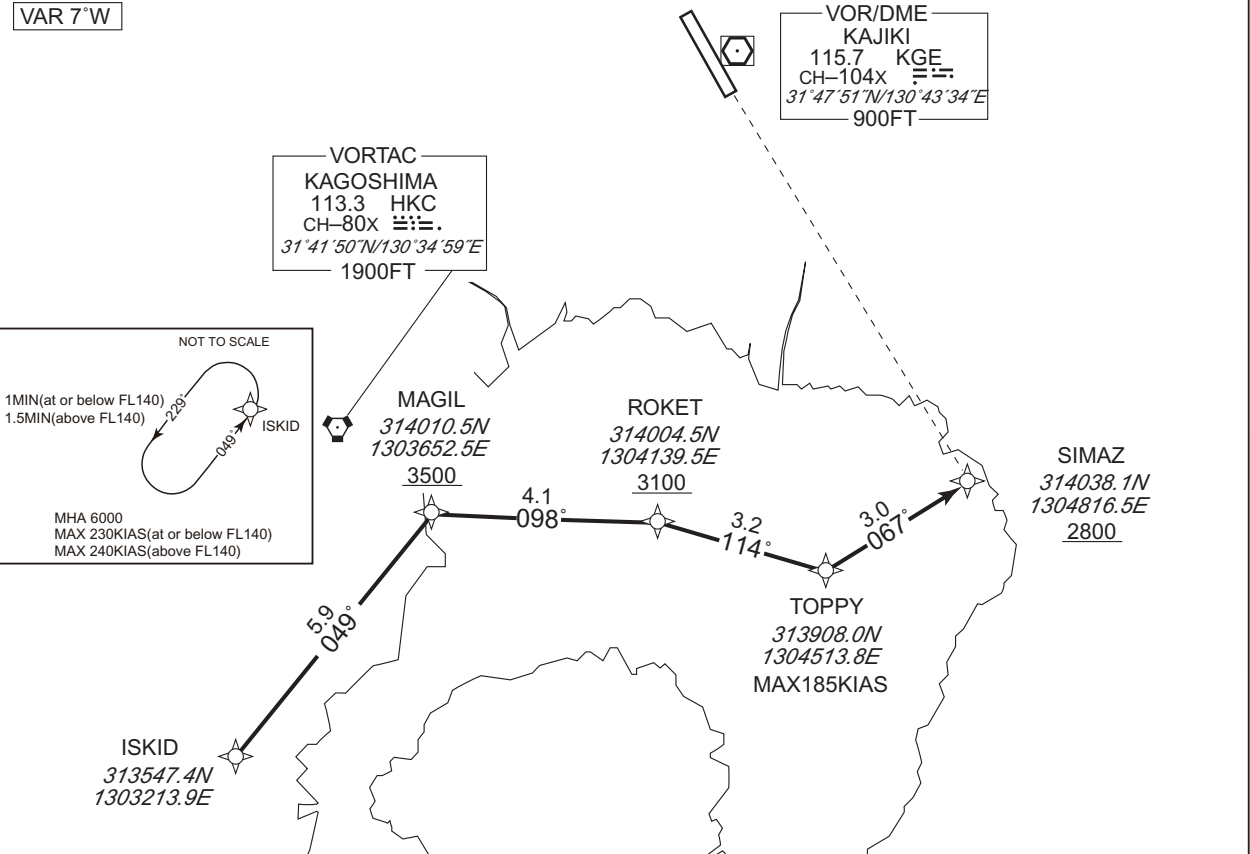
RJFK / KAGOSHIMA

RNAV STAR RWY34

SIMAZ SOUTH ARRIVAL

RNAV 1

Note 1) DME/DME/IRU or GNSS required.
2) RADAR service required.



CHANGE : RNAV HLDG established. HLDG for using NAVAID abolished(ISKID).

From ISKID, to MAGIL at or above 3500FT, to ROKET at or above 3100FT, to TOPPY, to SIMAZ at or above 2800FT.

Critical DME	-
DME GAP	ISKID - 3NM to MAGIL 1NM to MAGIL - SIMAZ
Inappropriate Navaids	See AD1.1.6.10.3. Inappropriate NAVAIDs for RNAV1

Serial Number	Path Descriptor	Waypoint Identifier	Fly Over	Course °M(°T)	Magnetic Variation	Distance (NM)	Turn Direction	Altitude (FT)	Speed (KIAS)	Vertical Angle	Navigation Specification
001	IF	ISKID	-	-	-6.9	-	-	-	-	-	RNAV1
002	TF	MAGIL	-	049 (042.0)	-6.9	5.9	-	+3500	-	-	RNAV1
003	TF	ROKET	-	098 (091.4)	-6.9	4.1	-	+3100	-	-	RNAV1
004	TF	TOPPY	-	114 (107.2)	-6.9	3.2	-	-	-185	-	RNAV1
005	TF	SIMAZ	-	067 (059.9)	-6.9	3.0	-	+2800	-	-	RNAV1

Path	Waypoint Identifier	Inbound Course °M(°T)	Magnetic Variation	Outbound Time (MIN)	Turn Direction	Minimum Altitude (FT)	Maximum Altitude (FT)	Speed (KIAS)	Navigation Specification
Hold	ISKID	049 (042.0)	-7.4	1.0(-14000) 1.5(+14001)	L	6000	-	-230(-14000) -240(+14001)	RNAV1

STANDARD ARRIVAL CHART -INSTRUMENT

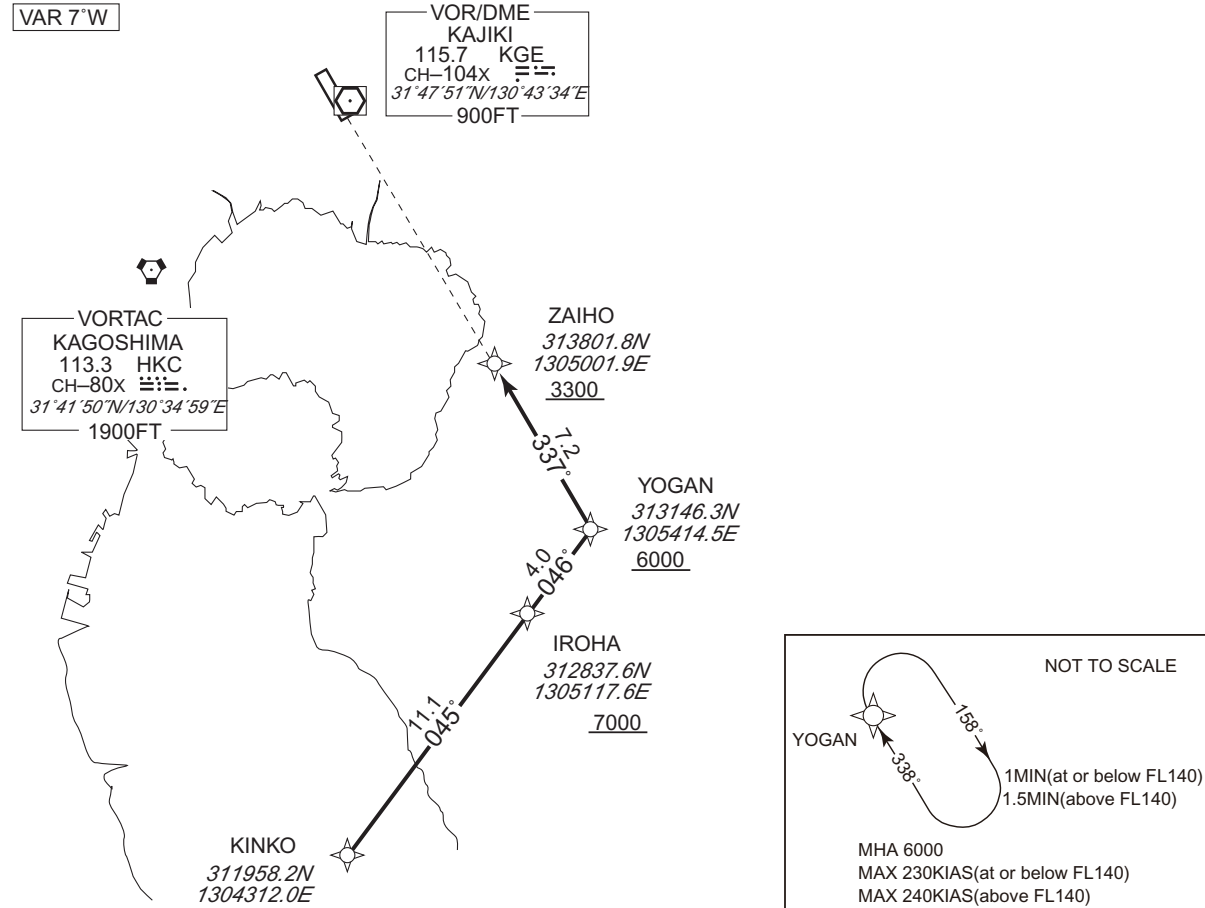
RJFK / KAGOSHIMA

RNAV STAR RWY34

KINKOH ARRIVAL

RNAV 1

Note 1) DME/DME/IRU or GNSS required.
2) RADAR service required.



From KINKO, to IROHA at or above 7000FT, to YOGAN at or above 6000FT, to ZAIHO at or above 3300FT.

Critical DME	JAT : 10.2NM to IROHA – 5.7NM to IROHA NHT : 5.6NM to IROHA – 2.4NM to IROHA 2.4NM to ZAIHO – 1.2NM to ZAIHO HKC : 4.4NM to ZAIHO – 1.3NM to ZAIHO
DME GAP	-
Inappropriate NavAids	See AD1.1.6.10.3. Inappropriate NAVAIDs for RNAV1

Serial Number	Path Descriptor	Waypoint Identifier	Fly Over	Course °M(°T)	Magnetic Variation	Distance (NM)	Turn Direction	Altitude (FT)	Speed (KIAS)	Vertical Angle	Navigation Specification
001	IF	KINKO	-	-	-6.9	-	-	-	-	-	RNAV1
002	TF	IROHA	-	045 (038.6)	-6.9	11.1	-	+7000	-	-	RNAV1
003	TF	YOGAN	-	046 (038.6)	-6.9	4.0	-	+6000	-	-	RNAV1
004	TF	ZAIHO	-	337 (330.2)	-6.9	7.2	-	+3300	-	-	RNAV1

Path	Waypoint Identifier	Inbound Course °M(°T)	Magnetic Variation	Outbound Time (MIN)	Turn Direction	Minimum Altitude (FT)	Maximum Altitude (FT)	Speed (KIAS)	Navigation Specification
Hold	YOGAN	338 (330.2)	-7.4	1.0(-14000) 1.5(+14001)	R	6000	-	-230(-14000) -240(+14001)	RNAV1

CHANGE : RNAV HLDG established. HLDG for using NAVAID abolished(YOGAN).

STANDARD ARRIVAL CHART-INSTRUMENT

RJFK / KAGOSHIMA

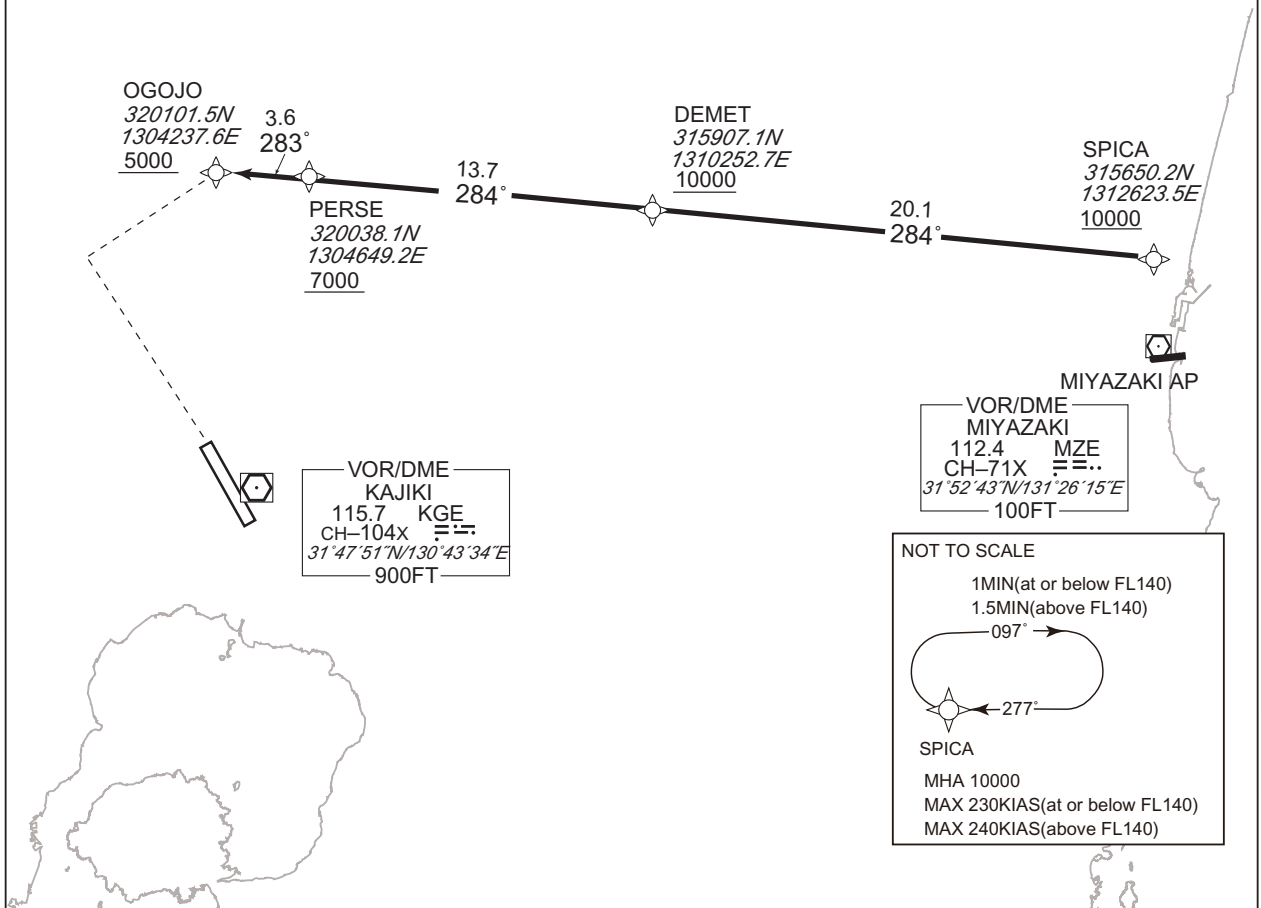
RNAV STAR RWY16

OGOJO ARRIVAL

RNAV 1

Note 1) DME/DME/IRU or GNSS required.
2) RADAR service required.

VAR 7°W



From SPICA at or above 10000FT, to DEMET at or above 10000FT, to PERSE at or above 7000FT, to OGOJO at or above 5000FT.

Critical DME	-	-
DME GAP	-	-
Inappropriate NavAids	See AD1.1.6.10.3. Inappropriate NAVAIDs for RNAV1	

CHANGE : RNAV HLDG established.

Serial Number	Path Descriptor	Waypoint Identifier	Fly Over	Course °M(°T)	Magnetic Variation	Distance (NM)	Turn Direction	Altitude (FT)	Speed (KIAS)	Vertical Angle	Navigation Specification
001	IF	SPICA	-	-	-7.2	-	-	+10000	-	-	RNAV1
002	TF	DEMET	-	284 (276.6)	-7.2	20.1	-	+10000	-	-	RNAV1
003	TF	PERSE	-	284 (276.4)	-7.2	13.7	-	+7000	-	-	RNAV1
004	TF	OGOJO	-	283 (276.3)	-7.2	3.6	-	+5000	-	-	RNAV1

Path	Waypoint Identifier	Inbound Course °M(°T)	Magnetic Variation	Outbound Time (MIN)	Turn Direction	Minimum Altitude (FT)	Maximum Altitude (FT)	Speed (KIAS)	Navigation Specification
Hold	SPICA	277 (270.1)	-7.4	1.0(-14000) 1.5(+14001)	R	10000	-	-230(-14000) -240(+14001)	RNAV1

STANDARD ARRIVAL CHART-INSTRUMENT

RJFK / KAGOSHIMA

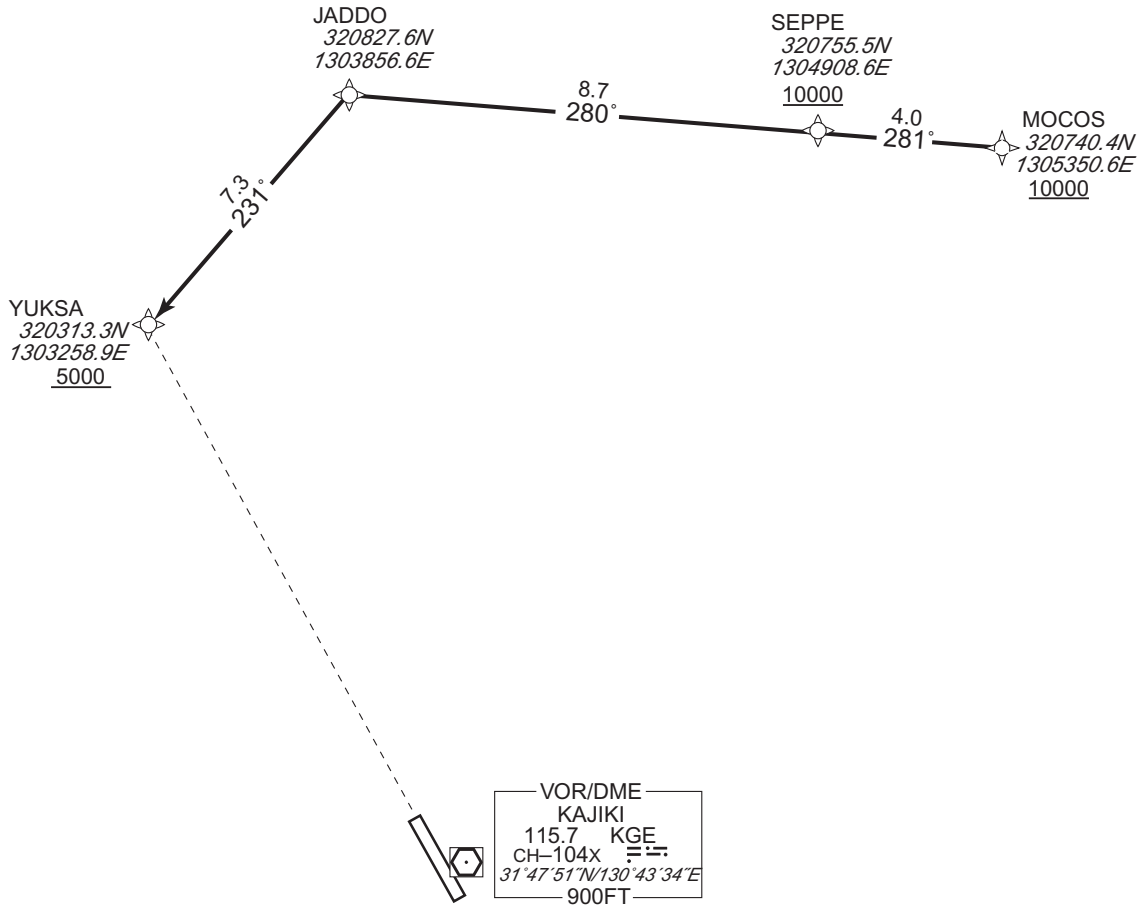
RNAV STAR RWY16

YUKSA ARRIVAL

RNAV 1

Note 1) DME/DME/IRU or GNSS required.
2) RADAR service required.

VAR 7°W



From MOCOS at or above 10000FT, to SEPPE at or above 10000FT, to JADDO, to YUKSA at or above 5000FT.

Critical DME	MZE	2NM to JADDO - JADDO
	KUE	1NM to YUKSA - YUKSA
	MZE	1NM to YUKSA - YUKSA
DME GAP	-	-
Inappropriate Nav aids	See AD1.1.6.10.3. Inappropriate NAVAIDs for RNAV1	

CHANGE : Description of VAR and PROC name.

Serial Number	Path Descriptor	Waypoint Identifier	Fly Over	Course °M(°T)	Magnetic Variation	Distance (NM)	Turn Direction	Altitude (FT)	Speed (KIAS)	Vertical Angle	Navigation Specification
001	IF	MOCOS	-	-	-6.9	-	-	+10000	-	-	RNAV1
002	TF	SEPPE	-	281 (273.6)	-6.9	4.0	-	+10000	-	-	RNAV1
003	TF	JADDO	-	280 (273.6)	-6.9	8.7	-	-	-	-	RNAV1
004	TF	YUKSA	-	231 (224.0)	-6.9	7.3	-	+5000	-	-	RNAV1

STANDARD ARRIVAL CHART-INSTRUMENT

RJFK / KAGOSHIMA

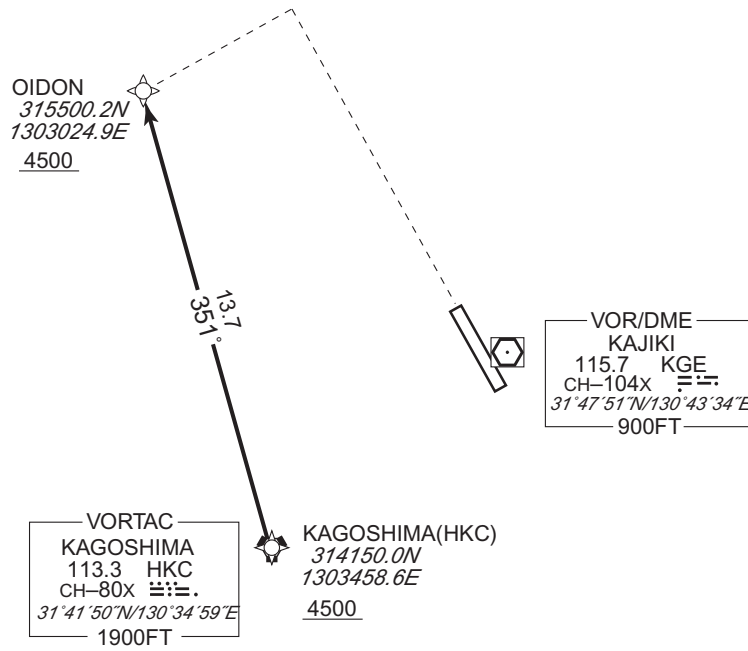
RNAV STAR RWY16

OIDON ARRIVAL

RNAV 1

Note 1) DME/DME/IRU or GNSS required.
2) RADAR service required.

VAR 7°W



From HKC at or above 4500FT, to Odon at or above 4500FT.

Critical DME	HKC	7NM to Odon - Odon
DME GAP	HKC - 10NM to Odon	
Inappropriate NavAids	See AD1.1.6.10.3. Inappropriate NAVAIDs for RNAV1	

CHANGE : Description of VAR and PROC name.

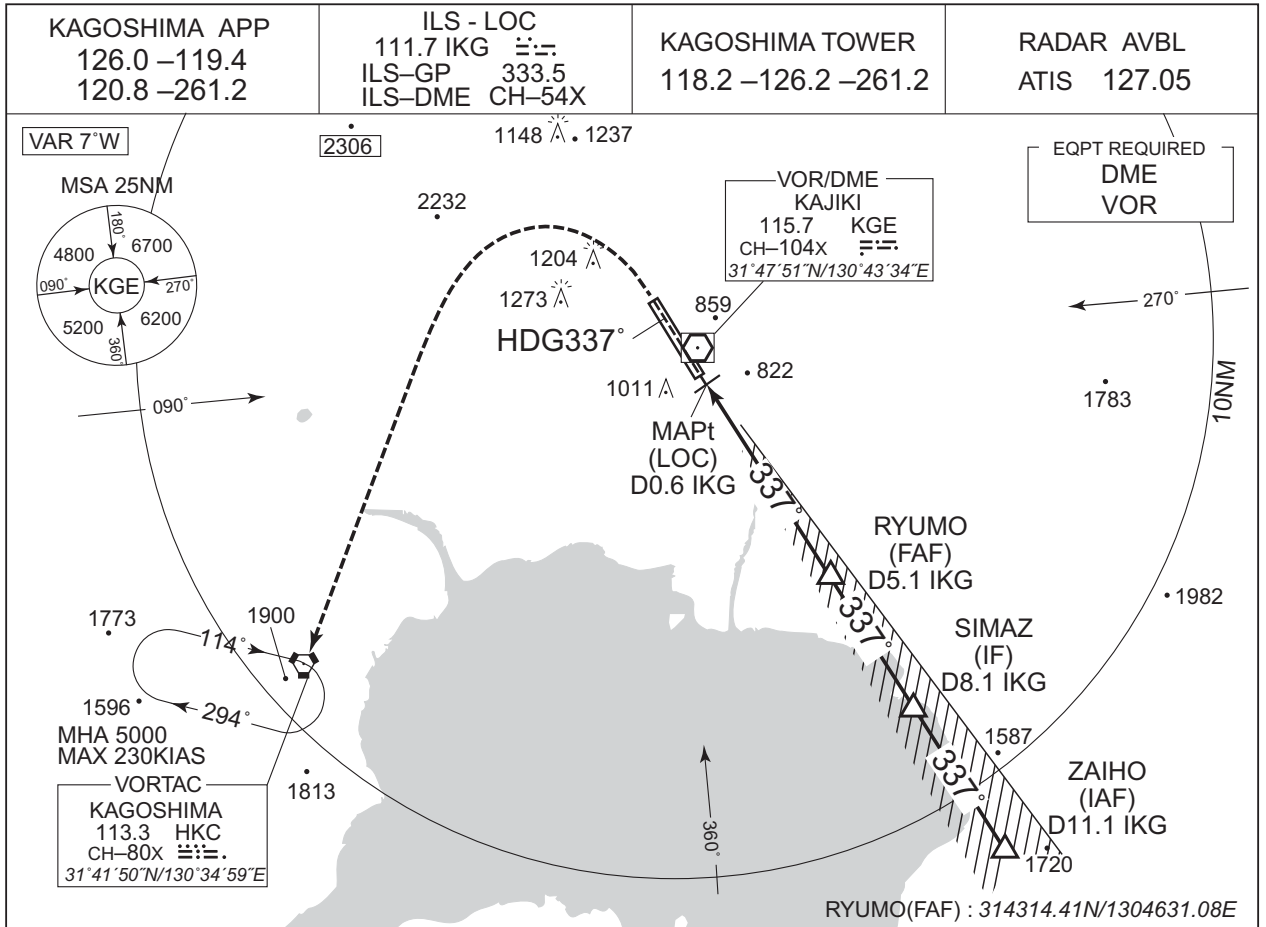
Serial Number	Path Descriptor	Waypoint Identifier	Fly Over	Course °M(°T)	Magnetic Variation	Distance (NM)	Turn Direction	Altitude (FT)	Speed (KIAS)	Vertical Angle	Navigation Specification
001	IF	HKC	-	-	-6.9	-	-	+4500	-	-	RNAV1
002	TF	OIDON	-	351 (343.6)	-6.9	13.7	-	+4500	-	-	RNAV1

INTENTIONALLY LEFT BLANK

INSTRUMENT APPROACH CHART

RJFK / KAGOSHIMA

ILS Z or LOC Z RWY34

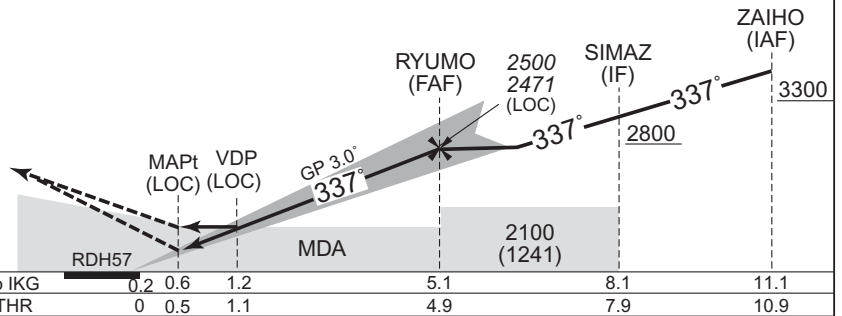


	NM to IKG	MAPt	2	3	4	5	FAF
	ALT (3.0° APCH Path)	-	1490	1809	2127	2446	2471

MISSED APPROACH

Climb to 1300FT on HDG337°,
turn left, direct to HKC VORTAC
and hold at 5000FT.
Contact KAGOSHIMA APP.

No turn before IKG 0.6DME.
Timing not authorized for defining the MAPt.



Missed APCH climb gradient MNM 5.0%

MINIMA THR elev. 859 AD elev. 891

CAT	CAT I		LOC		CIRCLING		
	DA(H)	RVR/CMV	MDA(H)	RVR/CMV	MDA(H)	VIS	
A	1059 (200)	550	1240 (381)	900	1680 (789)	1600	
B				1000			
C				1400			2400
D				1710 (819)			3200

MINIMA with Missed APCH climb gradient of 2.5% are not established.

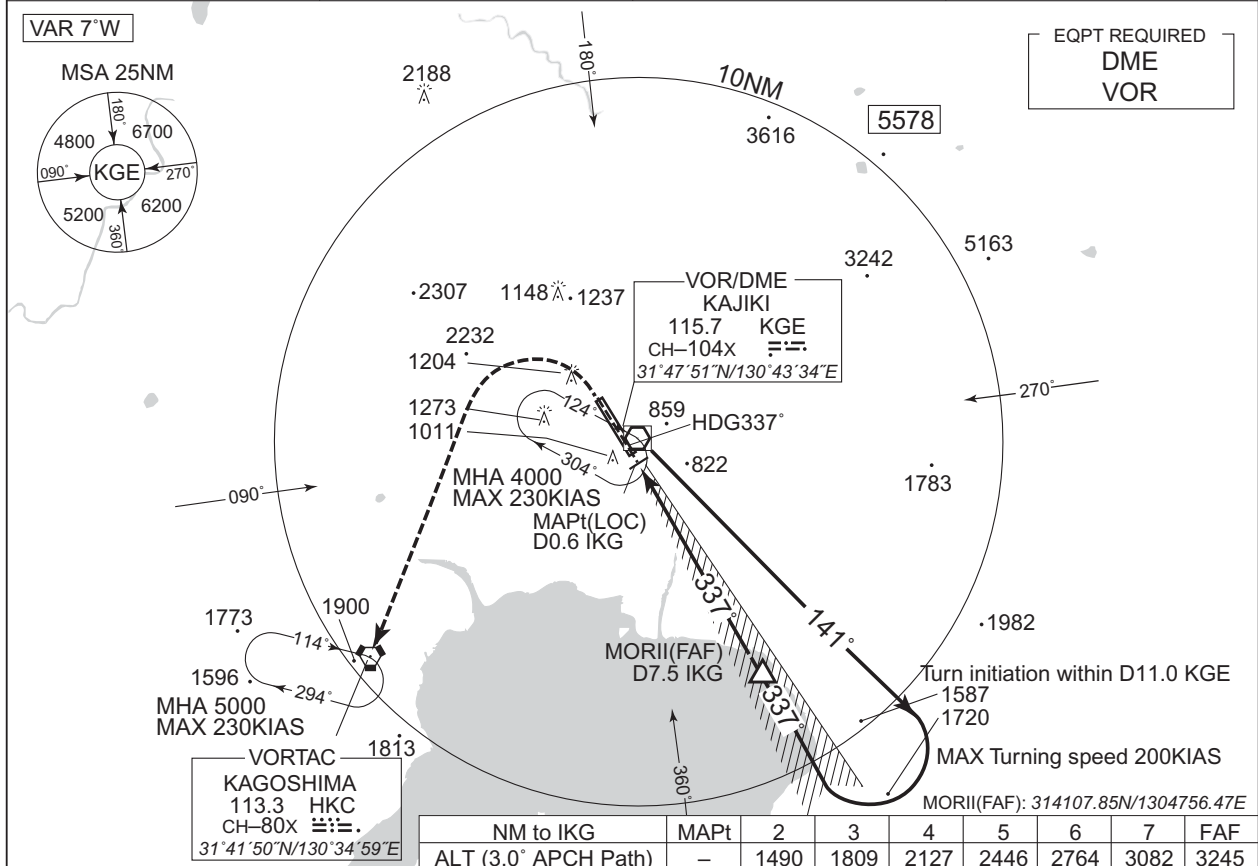
CHANGE : MINIMA for circling. HLDG pattern.

INSTRUMENT APPROACH CHART

RJFK / KAGOSHIMA

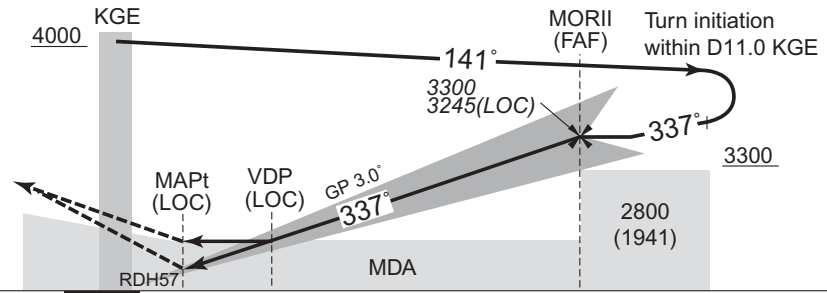
ILS Y or LOC Y RWY34

KAGOSHIMA APP 126.0 -119.4 120.8 -261.2	ILS - LOC 111.7 IKG ILS-GP 333.5 ILS-DME CH-54X	KAGOSHIMA TOWER 118.2 -126.2 -261.2	RADAR AVBL ATIS 127.05
---	--	--	---------------------------



MISSED APPROACH

Climb to 1300FT on HDG337°,
turn left, direct to HKC
VORTAC and hold at 5000FT.
Contact KAGOSHIMA APP.



No turn before IKG 0.6DME.
Timing not authorized for defining the MAPt.

DME to IKG	0.2	0.6	1.2	7.5
NM to THR	0	0.5	1.1	7.4

Missed APCH climb gradient MNM 5.0%.

MINIMA		THR elev. 859		AD elev. 891				
CAT	CAT I		LOC		CIRCLING			
	DA(H)	RVR/CMV	MDA(H)	RVR/CMV	MDA(H)	VIS		
A	1059 (200)	550	1240 (381)	900	1680 (789)	1600		
B				1000				
C				1400			1710 (819)	3200
D								

MINIMA with Missed APCH climb gradient of 2.5% are not established.

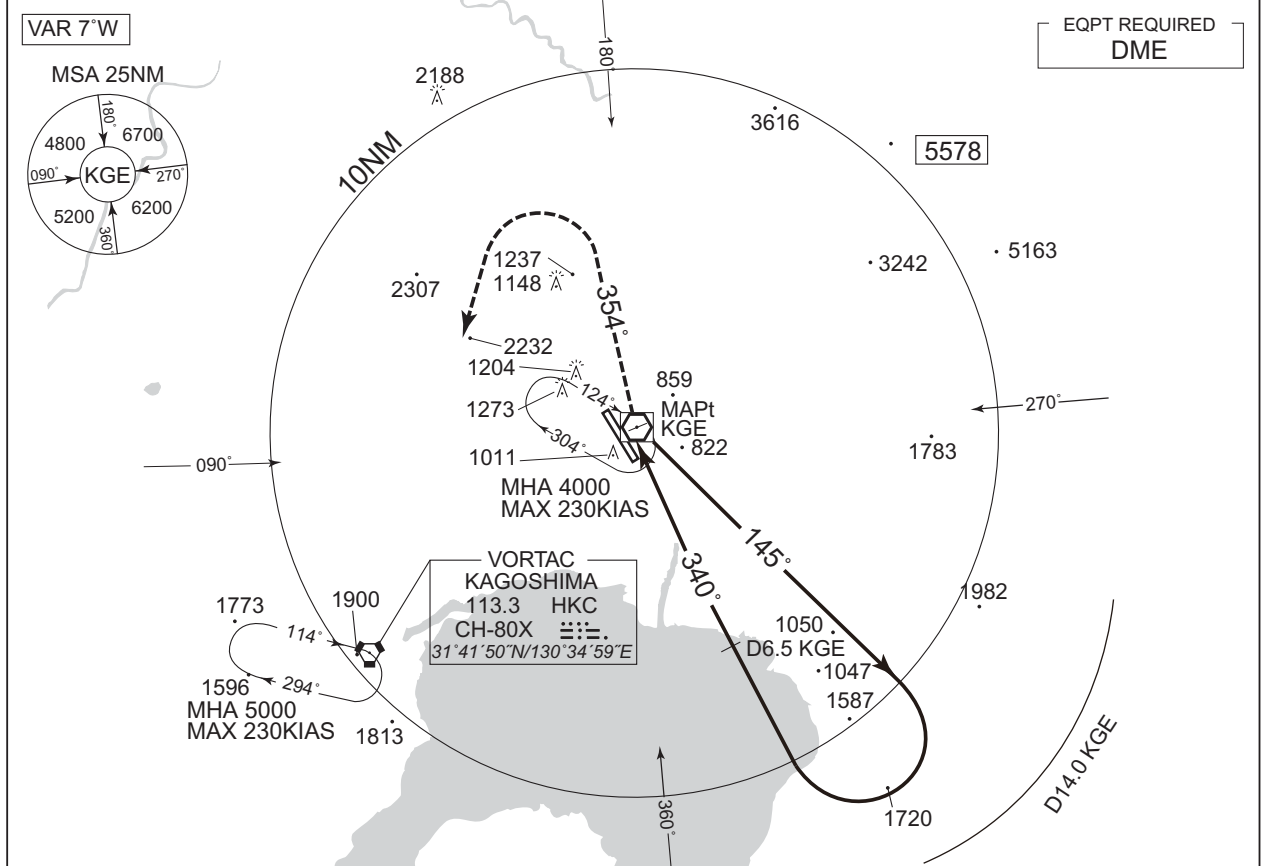
CHANGE : MINIMA for circling. HLDG pattern.

INSTRUMENT APPROACH CHART

RJFK / KAGOSHIMA

VOR RWY34

KAGOSHIMA APP 126.0 –119.4 120.8 –261.2	KAJIKI VOR/DME 115.7 KGE CH-104X 31°47'51"N/130°43'34"E	KAGOSHIMA TOWER 118.2 –126.2 –261.2	RADAR AVBL ATIS 127.05
--	---	---	----------------------------------



MISSED APPROACH
 At KGE VOR/DME, turn right, climb via KGE R354 to 3500FT, turn left, direct to HKC VORTAC and hold at 5000FT. Contact KAGOSHIMA APP.

Remain within D14.0 KGE

The diagram shows a missed approach starting at KGE (4000ft). A 145° turn leads to a 3300ft altitude. A 340° turn leads to a 2500ft altitude. The MAPt is at 822 and the VDP is at 1.7 DME to KGE.

CHANGE : MINIMA for circling. HLDG pattern.

DME to KGE		1.7	6.5
MINIMA		THR elev. 859	AD elev. 891
CAT	CIRCLING		
	MDA(H)	RVR/CMV	MDA(H) VIS
A	1350 (491)	1000	1600
B		1680 (789)	
C			2400
D		1600	1710 (819) 3200

INSTRUMENT APPROACH CHART

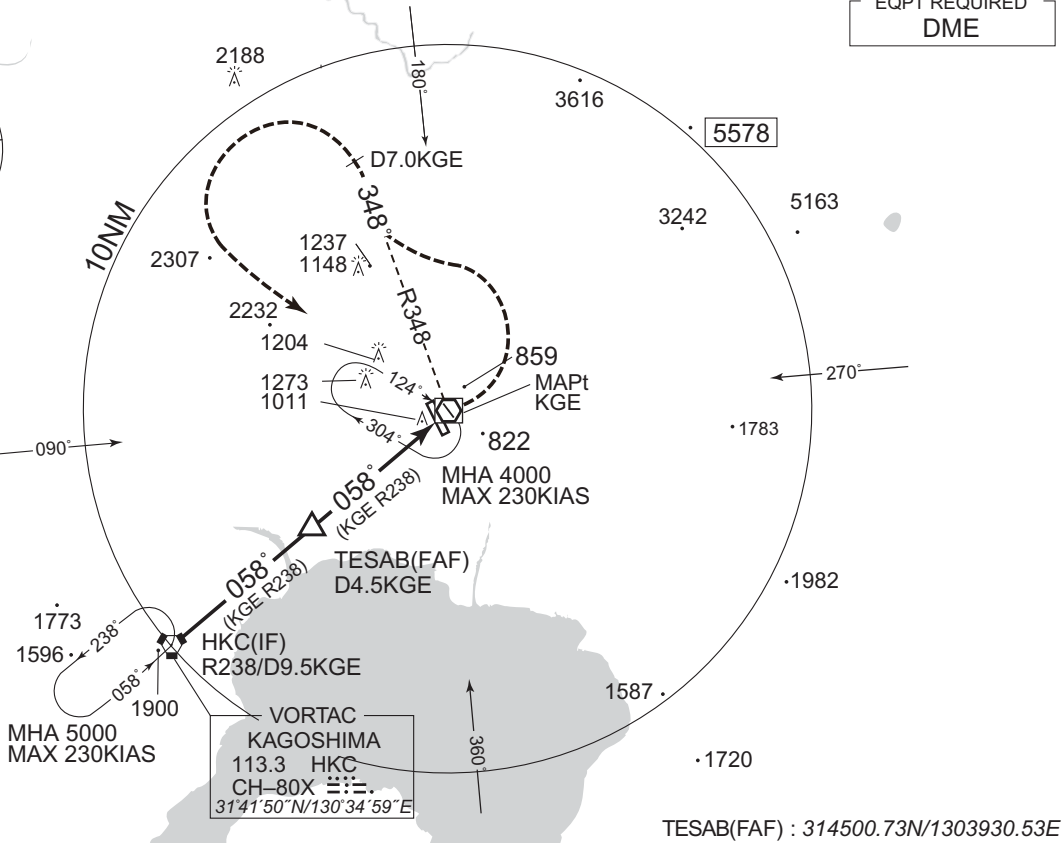
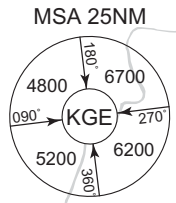
RJFK / KAGOSHIMA

VOR A

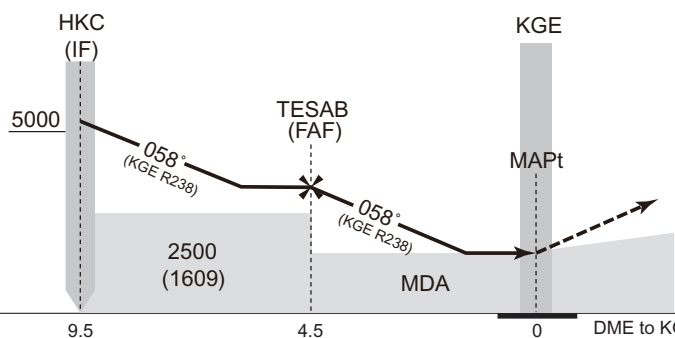
KAGOSHIMA APP 126.0 -119.4 120.8 -261.2	KAJIKI VOR/DME 115.7 KGE $\equiv \equiv \equiv$ CH-104X 31°47'51"N/130°43'34"E	KAGOSHIMA TOWER 118.2 -126.2 -261.2	RADAR AVBL ATIS 127.05
---	---	--	---------------------------

VAR 7°W

EQPT REQUIRED
DME



TESAB(FAF) : 314500.73N/1303930.53E



MISSED APPROACH
Turn left, via KGE R348 to KGE 7.0DME, turn left, direct to KGE VOR/DME and hold at 4000FT. Contact KAGOSHIMA APP.

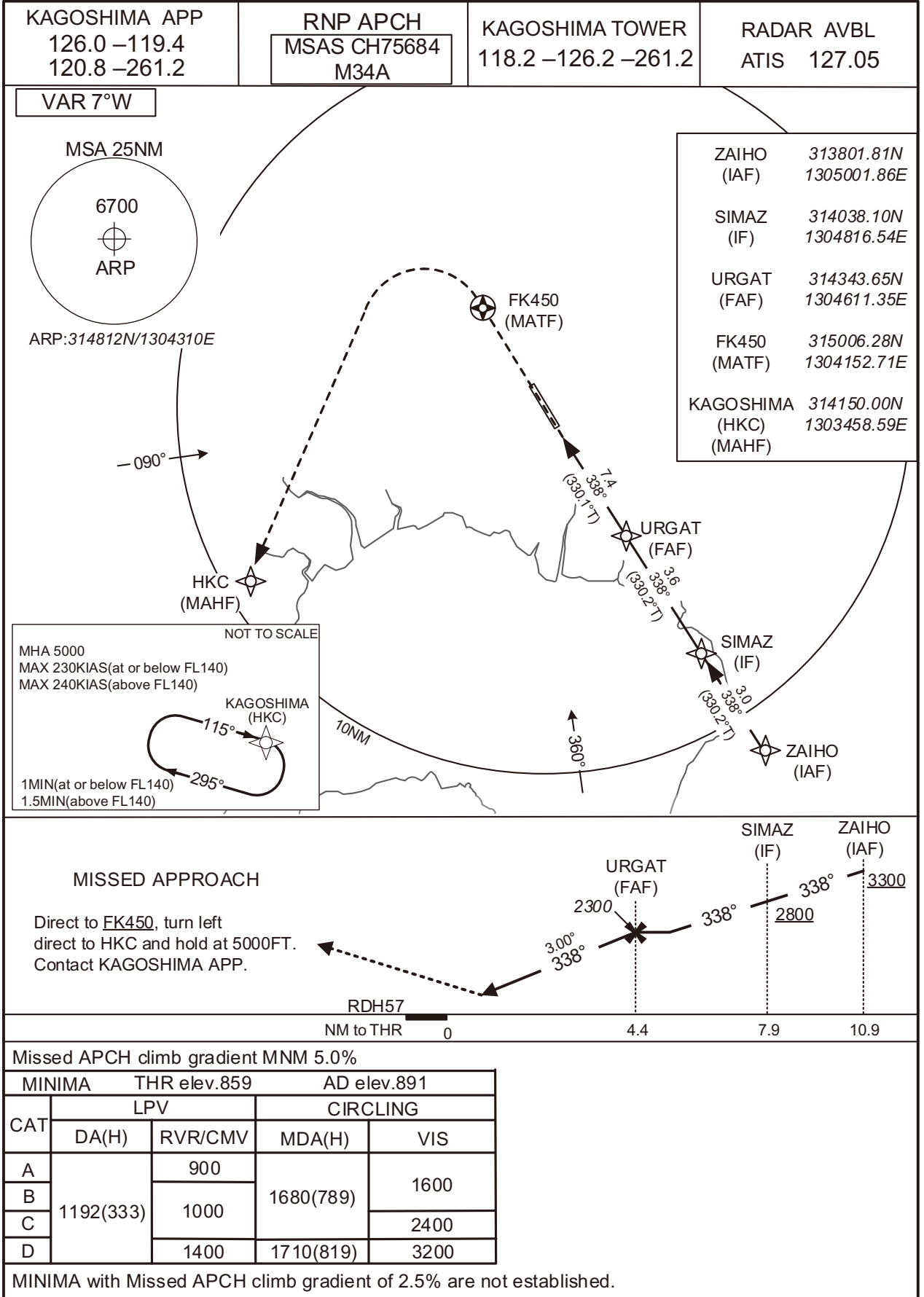
MINIMA		AD elev. 891
CAT	CIRCLING	
	MDA(H)	VIS
A	1680 (789)	1600
B		2400
C	1710 (819)	3200
D		

CHANGE : Missed APCH course. MINIMA. OCA(H) established. TESAB established. HLDG pattern.

INSTRUMENT APPROACH CHART

RJFK / KAGOSHIMA

RNP RWY34(LPV only)



CHANGE : New PROC.

INSTRUMENT APPROACH CHART

RJFK / KAGOSHIMA

RNP RWY34(LPV only)

FAS DATA BLOCK

Operation type	0	LTP/FTP ellipsoidal height	+02939
SBAS service provider identifier	2	FPAP latitude	314854.3765N
Airport identifier	RJFK	FPAP longitude	1304241.3430E
Runway	34	Threshold crossing height	00017.3
Approach performance designator	0	TCH units selector	1
Route indicator		Glide path angle	03.00
Reference path data selector	0	Course width at threshold	105.00
Reference path ID	M34A	∠ length offset	0000
LTP/FTP latitude	314730.0345N	HAL	40.0
LTP/FTP longitude	1304338.3800E	VAL	50.0
CRC remainder	7F3AEA21		

Required additional data

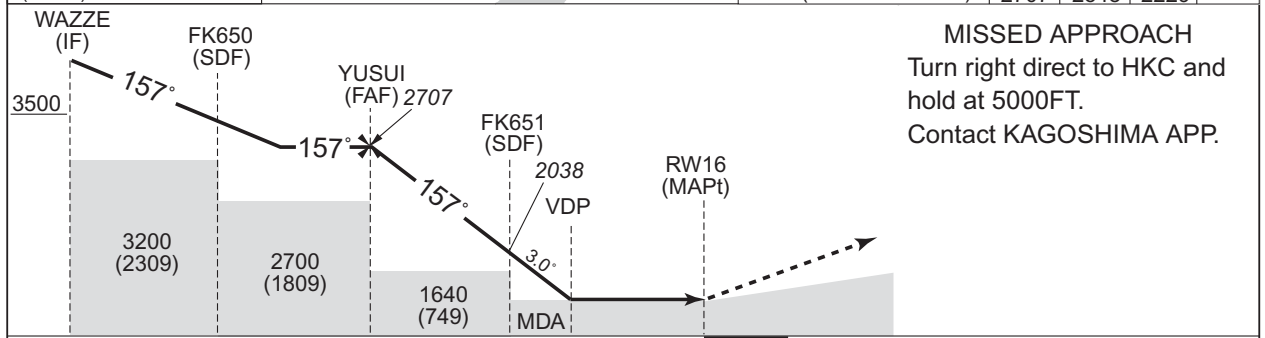
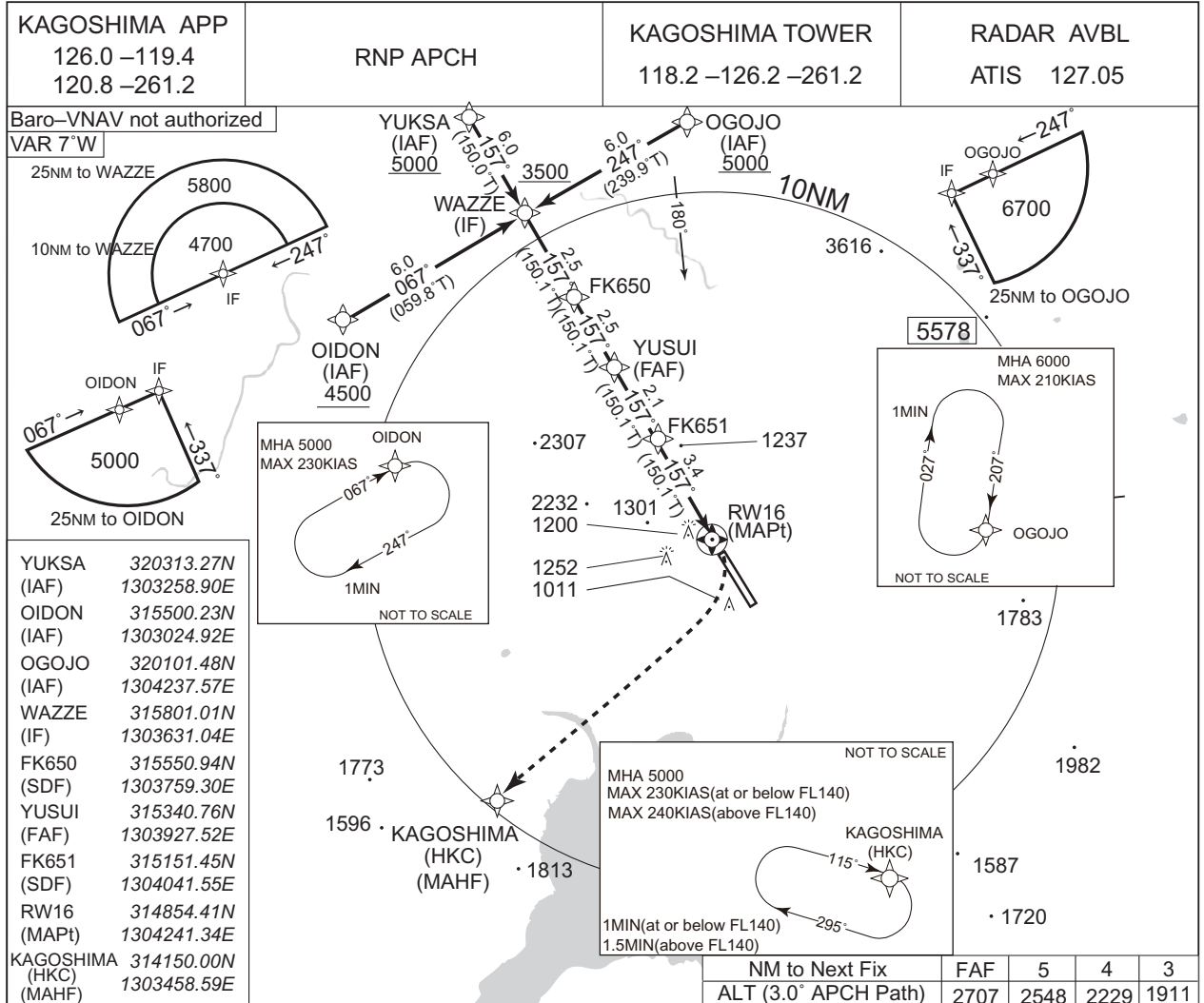
LTP/FTP orthometric height	262.2
----------------------------	-------

CHANGE : New PROC.

INSTRUMENT APPROACH CHART

RJFK / KAGOSHIMA

RNP RWY16



MISSED APPROACH
 Turn right direct to HKC and hold at 5000FT.
 Contact KAGOSHIMA APP.

CHANGE : MINIMA for circling.

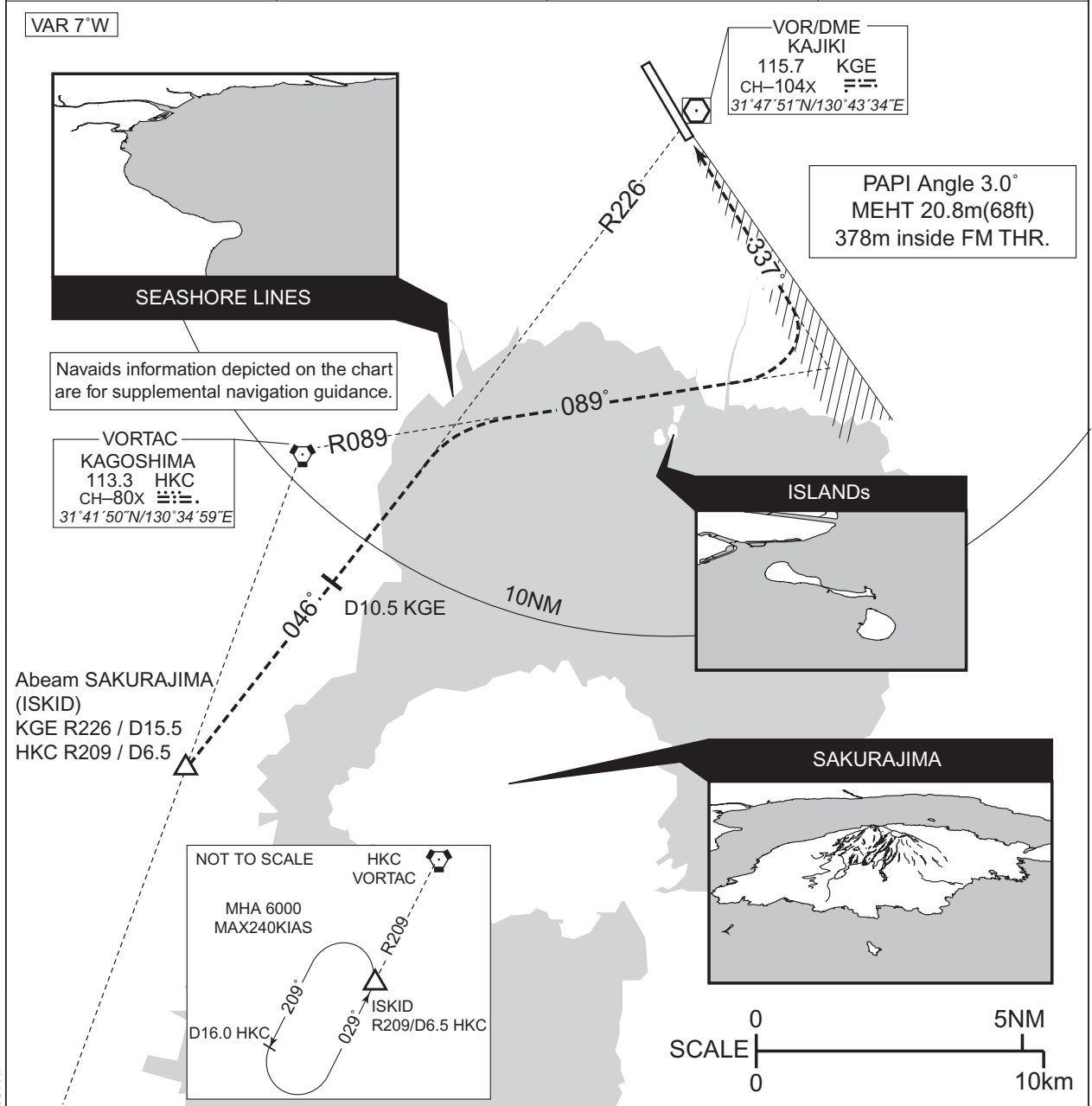
	MINIMA	THR elev. 906	AD elev. 891			
CAT	LNAV/VNAV	LNAV		CIRCLING		
	DA(H)	CMV	MDA(H)	CMV	MDA(H) VIS	
A	Not applicable		1610 (719)		1680 (789)	
B				1500		1600
C				1800		2400
D				2000		1710 (819) 3200

INTENTIONALLY LEFT BLANK

RJFK / KAGOSHIMA

VISUAL APPROACH
KINKO VISUAL RWY34

KAGOSHIMA APP 126.0 -119.4 120.8 -261.2	ILS - LOC 111.7 IKG $\equiv \equiv \equiv$ CH-54X ILS-GP 333.5	KAGOSHIMA TOWER 118.2 -126.2 -261.2	ATIS 127.05
---	---	--	-------------



CHANGE : Radial FM HKC. HLDG pattern.

When visual approaches to RWY34 are in progress, arriving aircraft may be vectored into the ISKID for KINKO VISUAL RWY34 APPROACH.
In the event of a go-around, climb via IKG LOC and RWY HDG to 3500FT until receiving ATC instructions.

<KINKO VISUAL RWY34 APPROACH>

After ISKID, aircraft proceed via seashore lines to the mouth of the Beppu River (KGE R226), proceed via seashore lines to ISLANDs(HKC R089) until intercept to RWY34 RWY center line, and proceed to RWY34(IKG LOC course).

Aircraft is recommended KGE 10.5DME(HKC R168) at or above 3500FT.

Note1: Pilot is urged to report promptly to ATC when lose sight of landmark(SAKURAJIMA, Seashore Lines and ISLANDs) and the preceding aircraft concerned.

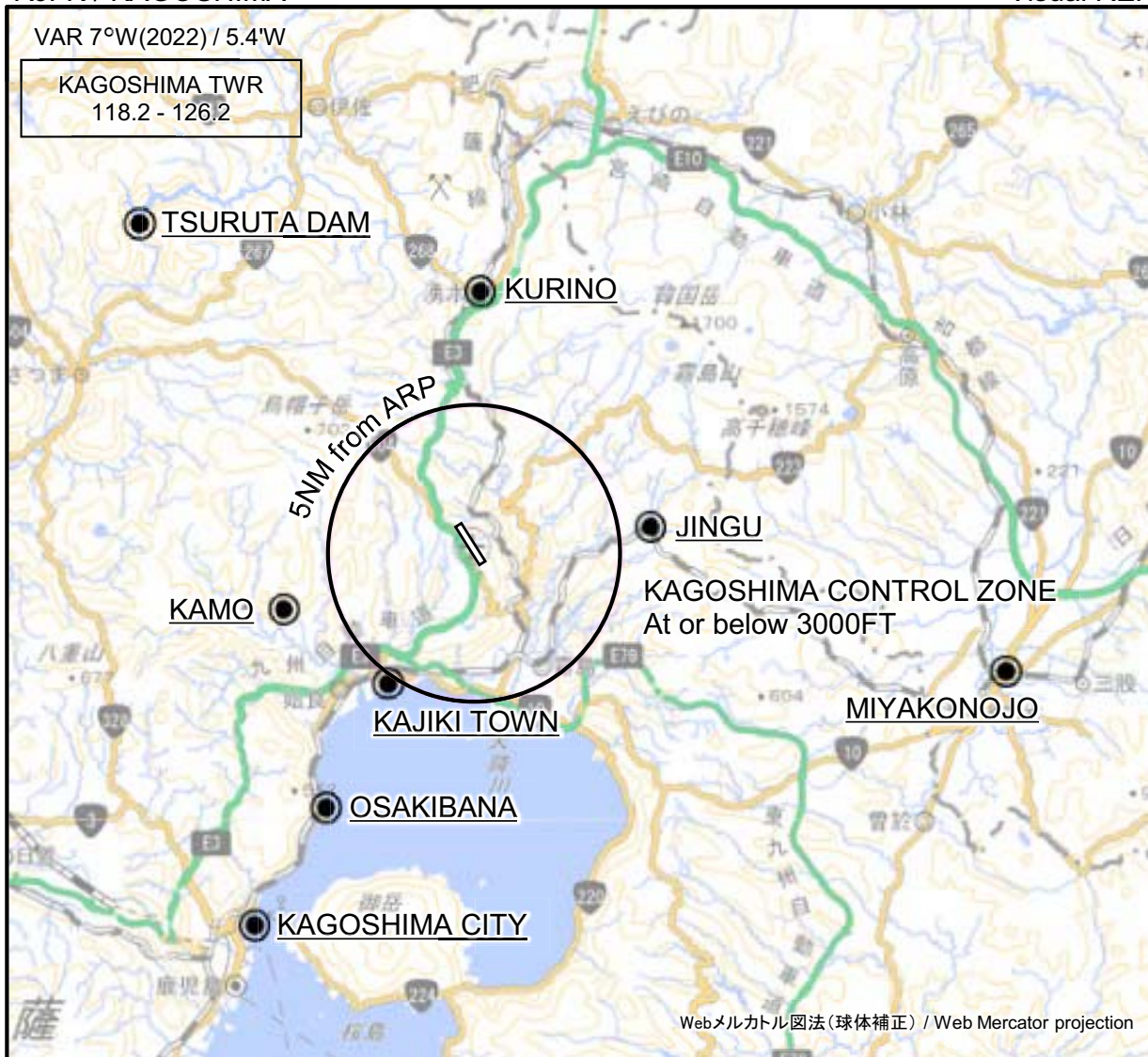
Note2: Reference NAVAIDS(KGE, HKC and IKG LOC) must be operating.

Note3: RADAR service required.

Note4: Procedure not authorized at night.

RJFK / KAGOSHIMA

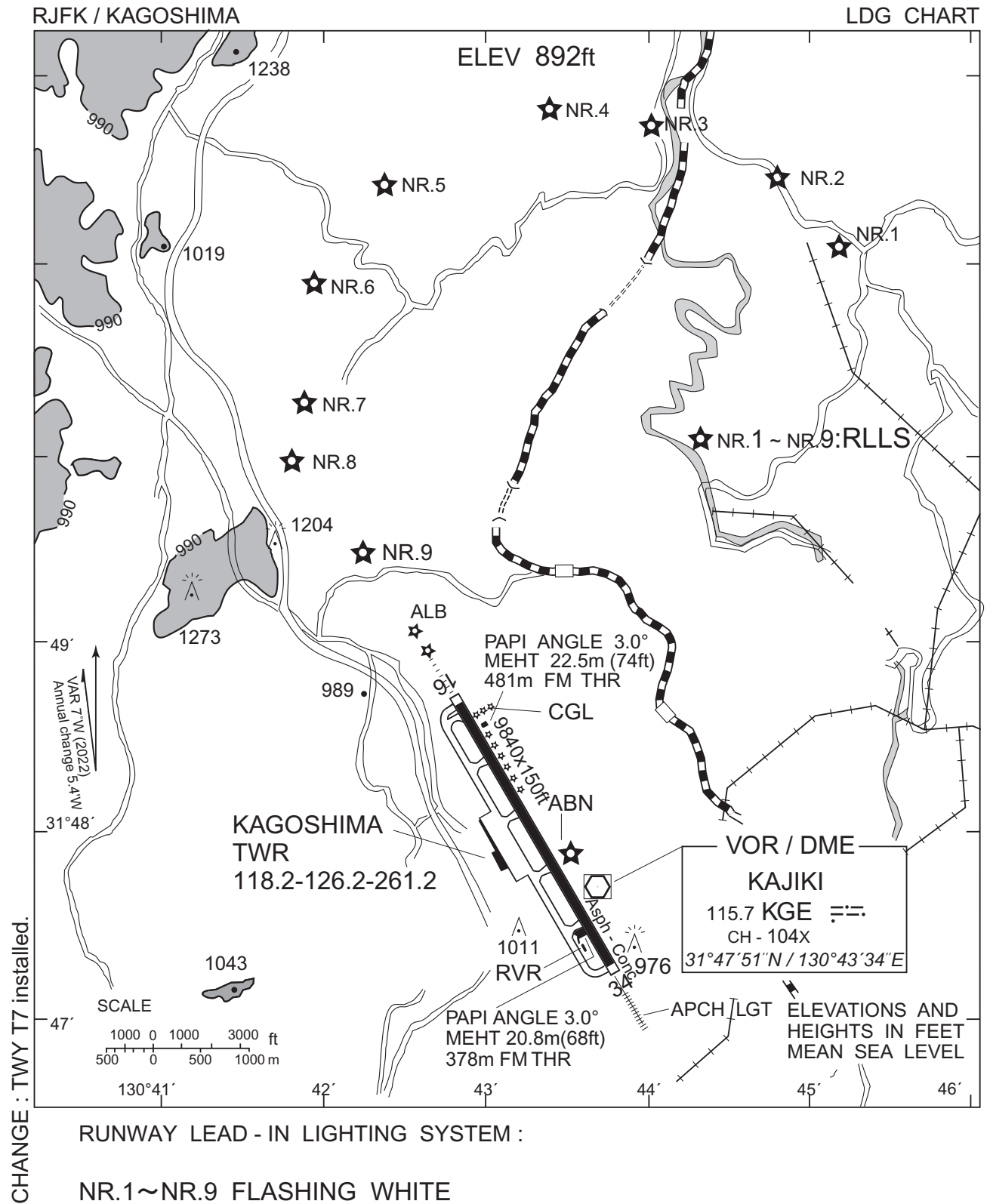
Visual REP



※図中に標高を示す数字がある場合、単位はメートル(m)である。The unit of measurement used to express elevation is meter(m).

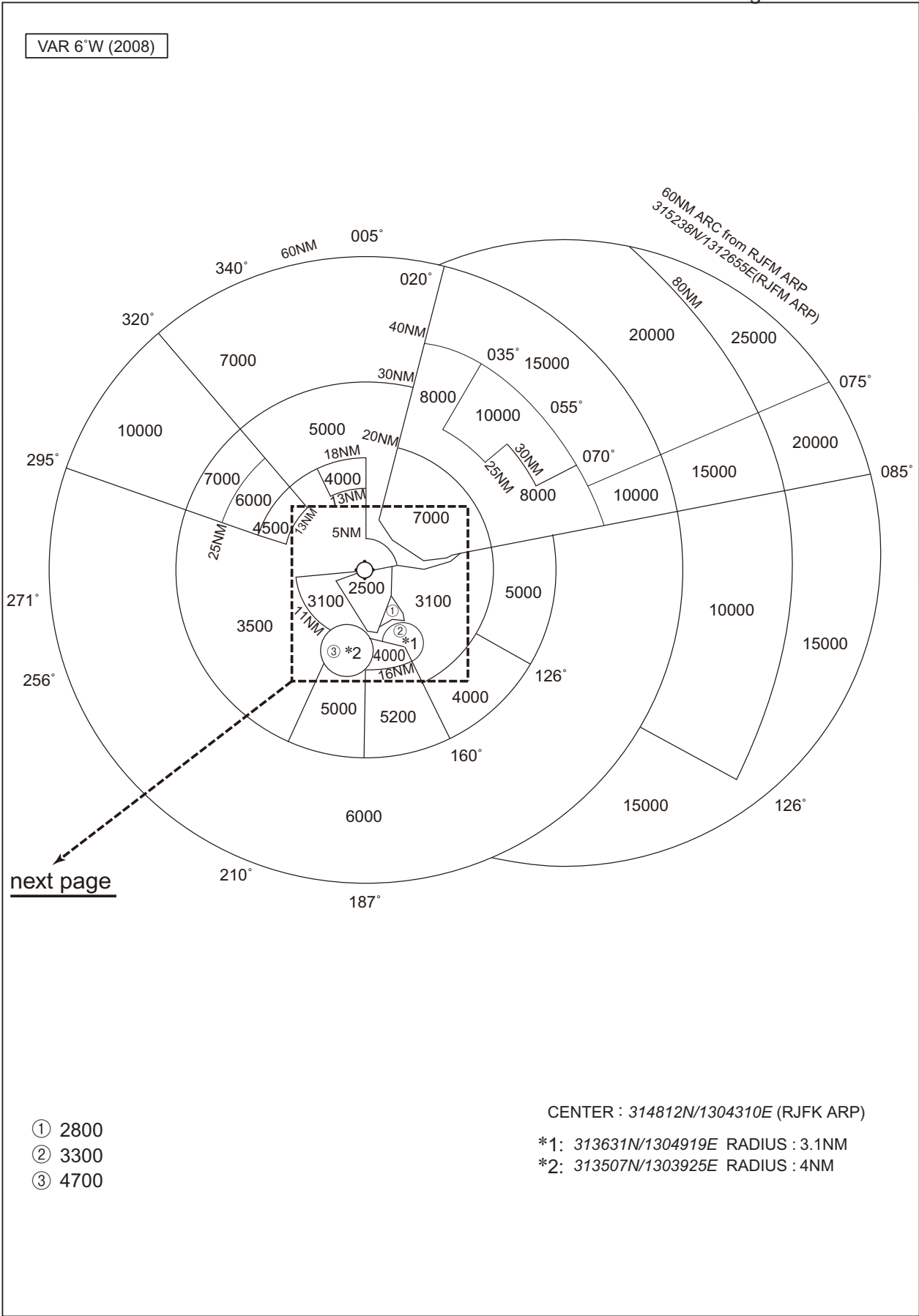
CHANGE : Map updated. BRG/DIST from ARP.

Call sign	BRG / DIST from ARP	Remarks
鶴田ダム Tsuruta Dam	314°T / 16.0NM	ダム Dam
栗野 Kurino	001°T / 8.8NM	JR駅 JR Station
神宮 Jingu	081°T / 6.1NM	JR駅 JR Station
蒲生 Kamo	254°T / 6.8NM	住吉池 Pond
都城 Miyakonojo	102°T / 18.6NM	JR駅 JR Station
加治木タウン Kajiki Town	214°T / 5.3NM	網掛川河口 River mouth (The Amikake)
大崎鼻 Osakibana	211°T / 10.0NM	崎 Point
鹿児島シティ Kagoshima City	211°T / 14.7NM	港 Harbor



RJFK / KAGOSHIMA

Minimum Vectoring Altitude CHART

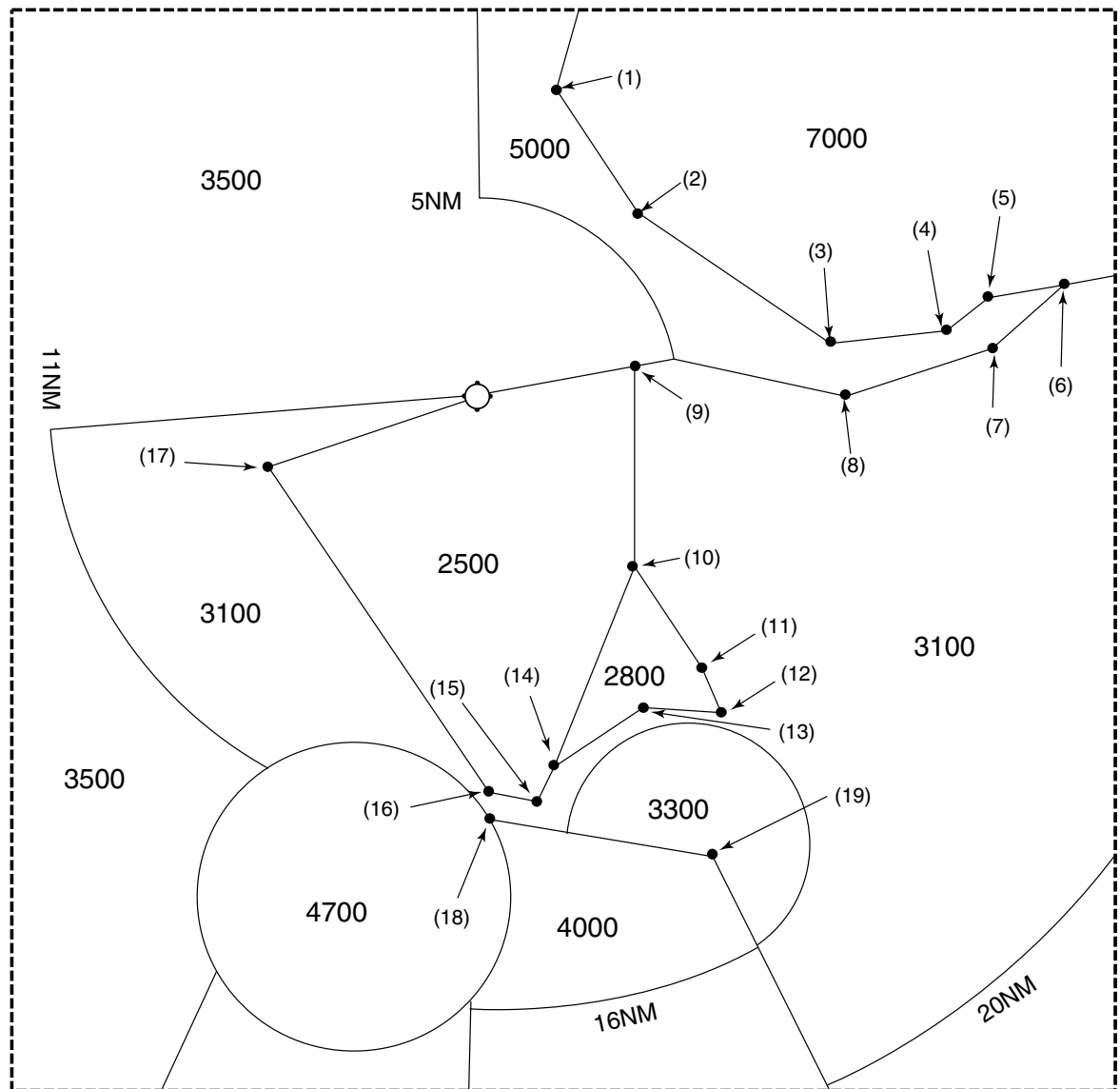


CHANGE : Update

RJFK / KAGOSHIMA

Minimum Vectoring Altitude CHART

enlarged view



- | | |
|-------------------------|-------------------------|
| (1) 315600N/1304528E | (11) 314059N/1304947E |
| (2) 315250N/1304805E | (12) 314004N/1305007E |
| (3) 314927N/1305345E | (13) 314005N/1304809E |
| (4) 314951N/1305709E | (14) 313829N/1304518E |
| (5) 315042N/1305825E | (15) 313733N/1304453E |
| (6) 315102N/1310029E | (16) 313747N/1304326E |
| (7) 314919N/1305824E | (17) 314616N/1303653E |
| (8) 314801N/1305359E | (18) 313707N/1304328E |
| (9) 314858N/1304746E | (19) 313608N/1305004E |
| (10) 314342N/1304742E | |