

STANDARD DEPARTURE CHART-INSTRUMENT

RJFN / NYUTABARU

SID

NIPPO SEVEN DEPARTURE

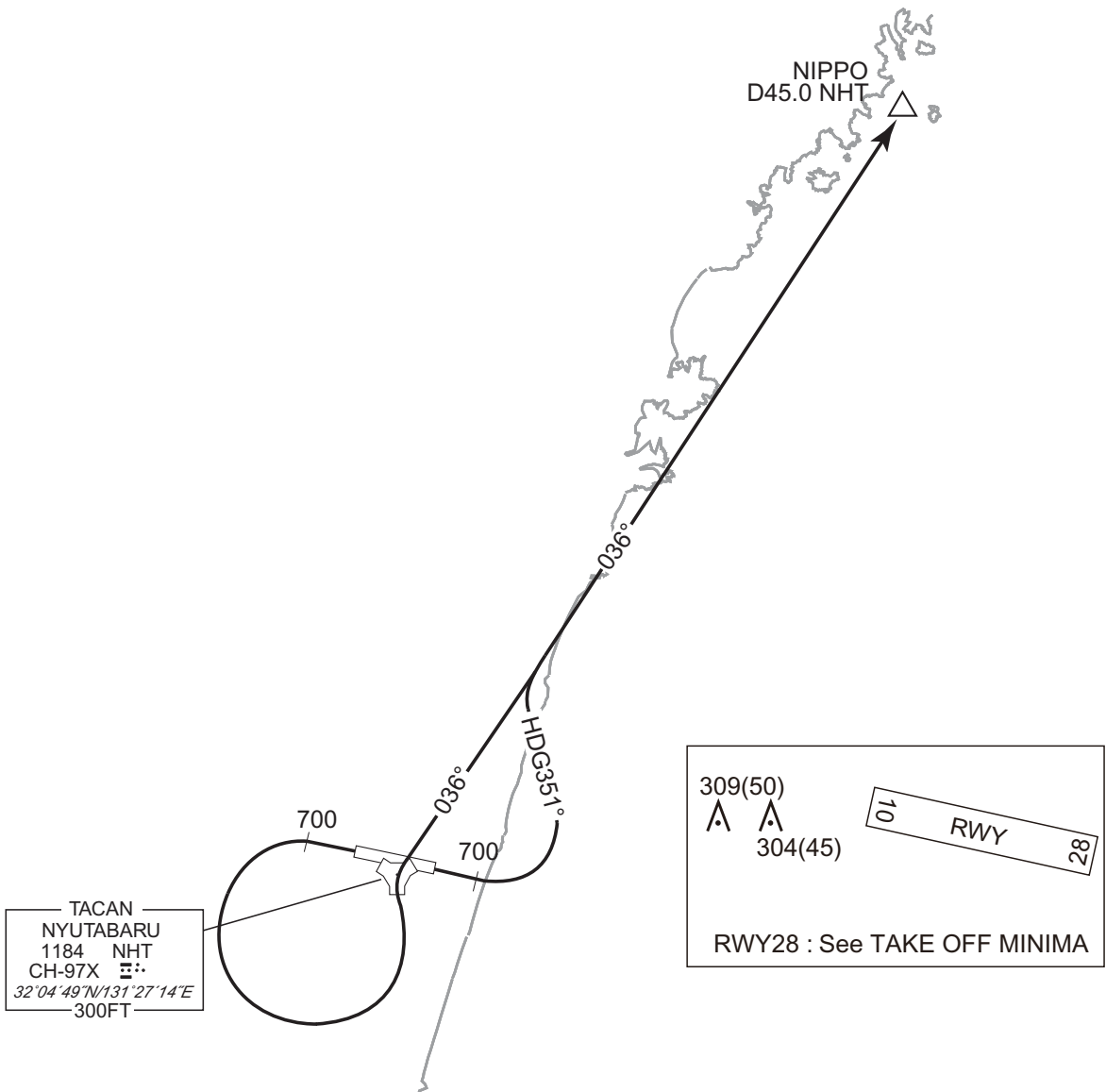
RWY10 : Climb RWY HDG to 700FT, turn left HDG 351°...

RWY28 : Climb RWY HDG to 700FT, turn left...

...to intercept and proceed via NHT R036 to NIPPO.

Note RWY28 : 5.0% climb gradient required up to 4000FT.

CHANGE : PROC renamed(NIPPO SEVEN DEPARTURE). PROC course(NIPPO SEVEN DEPARTURE). YATOJI TWO DEPARTURE abolished.
Restriction. Note, OBST added.



STANDARD DEPARTURE CHART-INSTRUMENT

RJFN / NYUTABARU

SID

TENSO FOUR DEPARTURE

RWY10 : Climb RWY HDG to 700FT, turn left...

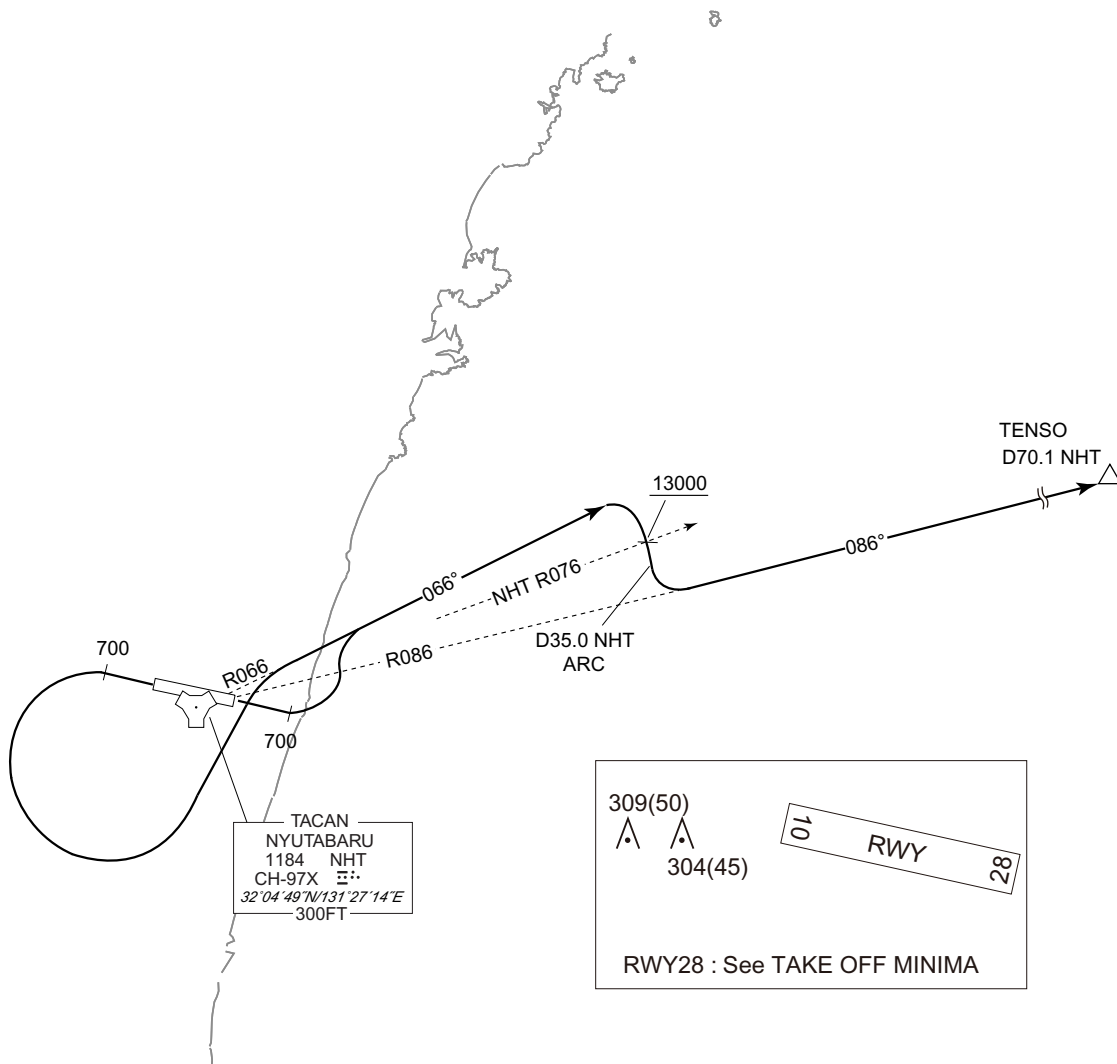
RWY28 : Climb RWY HDG to 700FT, turn left...

...to intercept and proceed via NHT R066, via NHT 35.0DME clockwise ARC via NHT R086 to TENSO.

Cross NHT R076 at or above 13000FT.

Note RWY28 : 5.0% climb gradient required up to 4000FT.

CHANGE : PROC renamed. PROC course. Restriction. Note, OBST added.



STANDARD DEPARTURE CHART-INSTRUMENT

RJFN / NYUTABARU

SID

SAITO ONE DEPARTURE

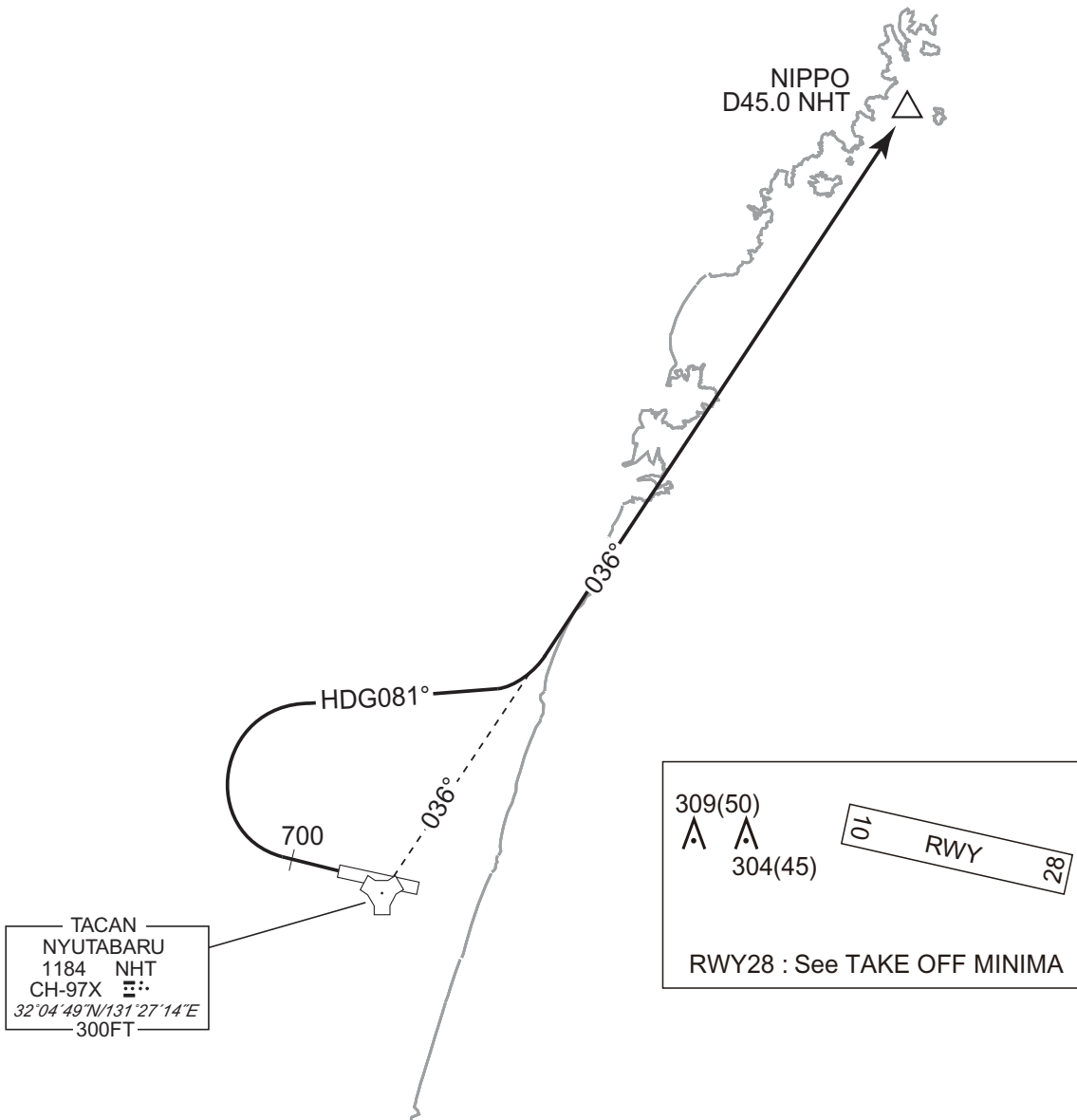
RWY10 : (Not established)

RWY28 : Climb RWY HDG to 700FT, turn right HDG 081° to intercept and proceed via NHT R036 to NIPPO.

Note RWY28 : 5.0% climb gradient required up to 4000FT.

OBST ALT 1871FT located at 6.3NM 334° FM end of RWY28.

CHANGE : New PROC.



STANDARD DEPARTURE CHART-INSTRUMENT

RJFN / NYUTABARU

TRANSITION

CHANGE : PROC course(NOBEOKA TRANSITION). Description of ASHIZURI TRANSITION, MUSASHI TRANSITION, MUSASHI TRANSITION. ALT restriction.
SOBO TRANSITION abolished.

ASHIZURI TRANSITION

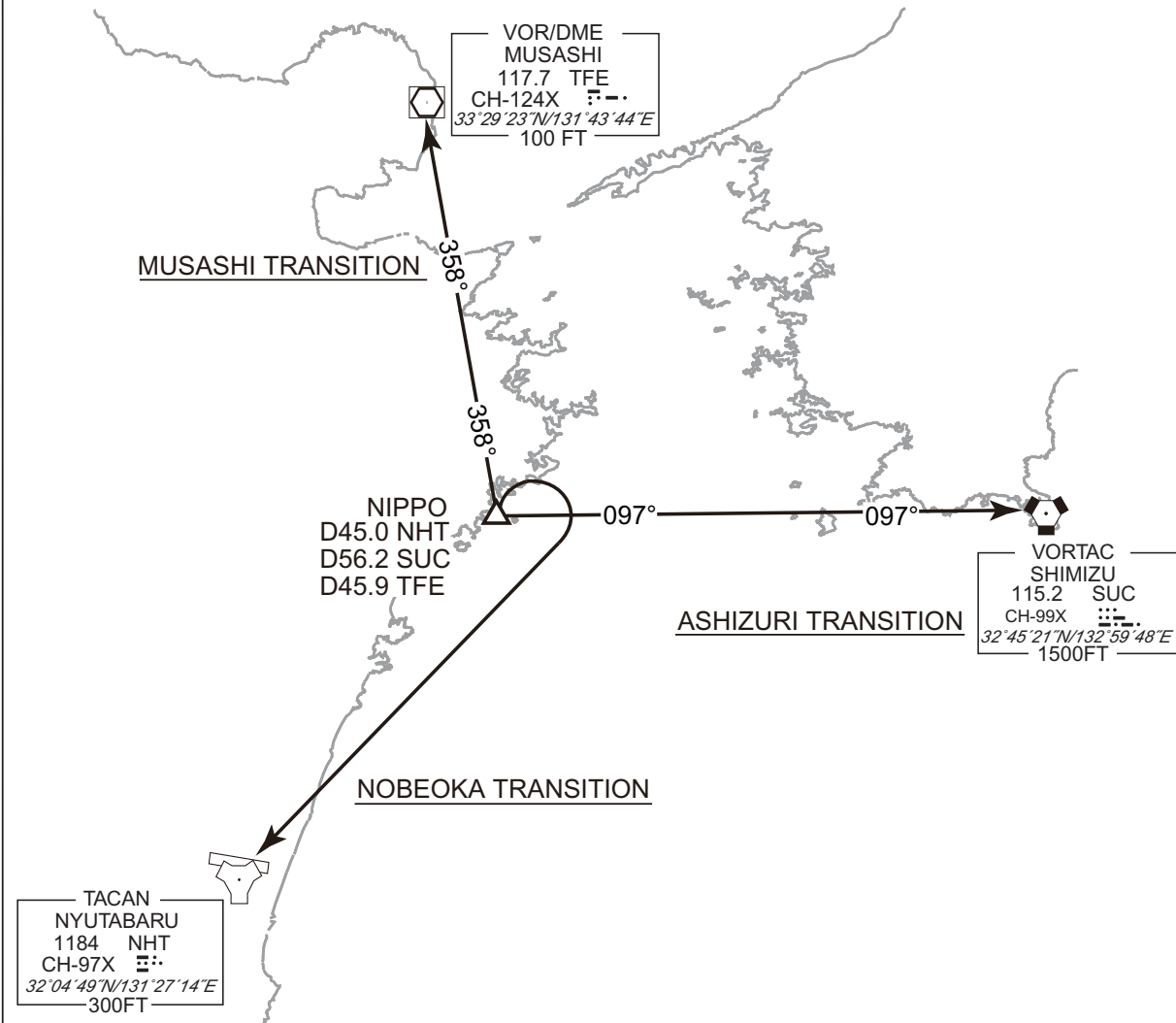
From over NIPPO, via SUC R277 to SUC VORTAC.

MUSASHI TRANSITION

From over NIPPO, via TFE R178 to TFE VOR/DME.

NOBEOKA TRANSITION

From over NIPPO, turn right direct to NHT TACAN.



STANDARD ARRIVAL CHART-INSTRUMENT

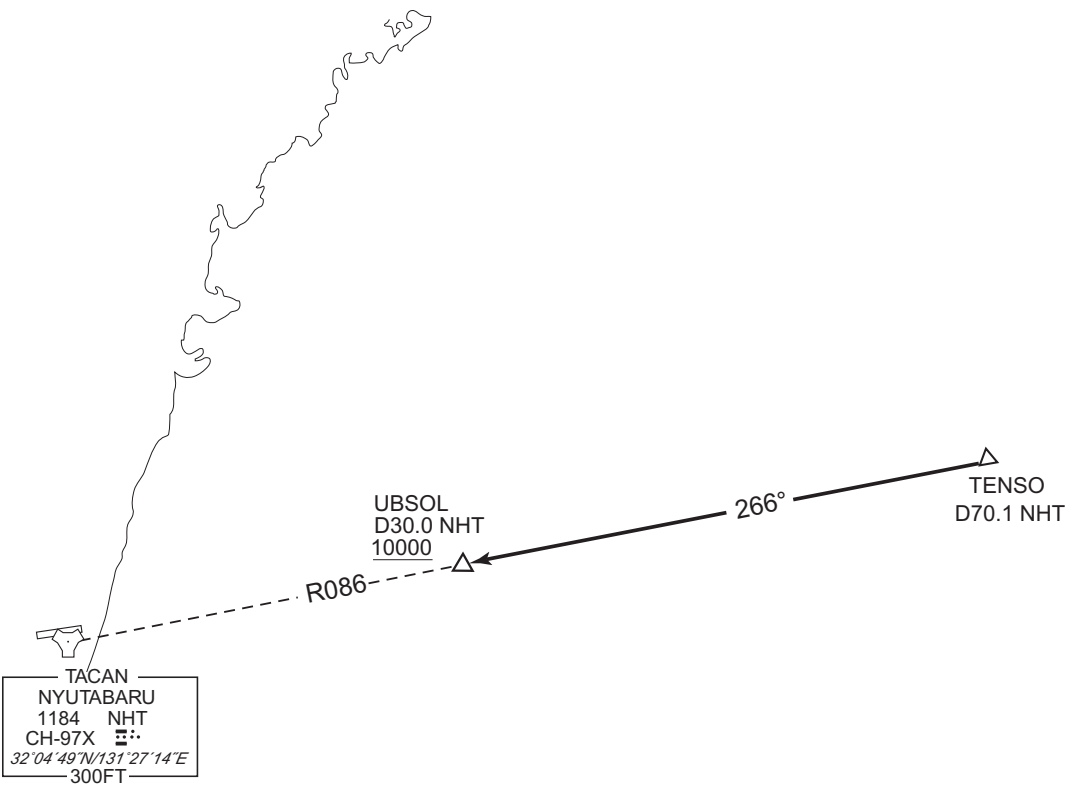
RJFN / NYUTABARU

STAR

TENSO ARRIVAL

From over TENSO, via NHT R086 to UBSOL.
Cross UBSOL at or above 10000FT.

CHANGE : PROC course. UBSOL established. ALT restriction.



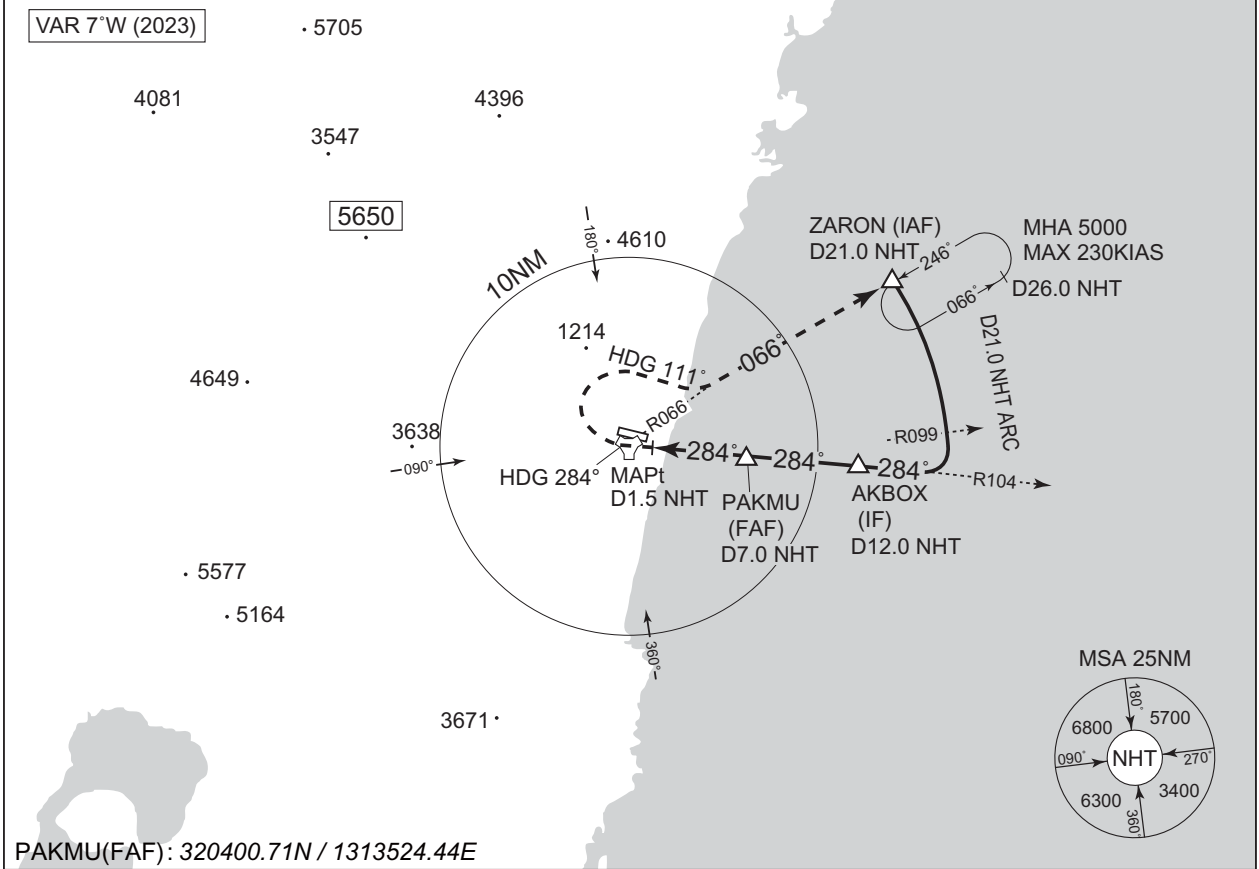
INTENTIONALLY LEFT BLANK

INSTRUMENT APPROACH CHART

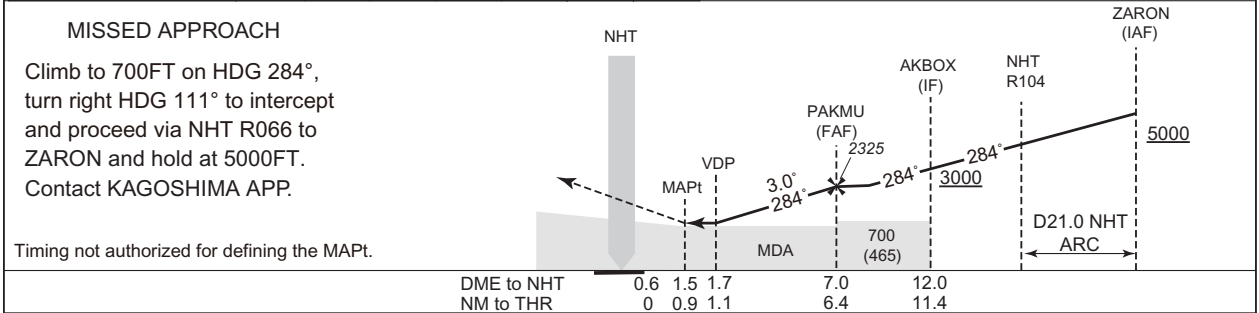
RJFN / NYUTABARU

TACAN Z RWY28

KAGOSHIMA APP 121.4 - 362.3 120.9 - 261.2	NYUTABARU TACAN 1184 NHT CH-97X 32°04'49"N/131°27'14"E	NYUTA TOWER 236.8 - 126.2 - 120.1 304.5 - 275.8G	GCA AVBL CALL KAGOSHIMA APP
---	---	--	-----------------------------------



NM to NHT	MAPt	2	3	4	5	6	FAF
ALT (3.0° APCH Path)	-	733	1051	1370	1688	2006	2325



Missed APCH climb gradient MNM 3.0%

MINIMA		THR elev. 235		AD elev. 259	
CAT	CIRCLING		MDA(H)	VIS	
	MDA(H)	RVR/CMV			
A	630 (395)	1200	690 (431)	1600	
B		1300			
C		1400	840 (581)		
D		1600			

MINIMA with Missed APCH climb gradient of 2.5% are not established.

CHANGE : PROC course. Missed APCH course. MINIMA. PAKMU,AKBOX established. NM to THR. ALT(3.0°APCH Path), DME to NHT added. Missed APCH climb gradient MNM added. VAR.

INSTRUMENT APPROACH CHART

RJFN / NYUTABARU

TACAN Y RWY28

KAGOSHIMA APP 121.4 - 362.3 120.9 - 261.2	NYUTABARU TACAN 1184 NHT CH-97X 32°04'49"N/131°27'14"E	NYUTA TOWER 236.8 - 126.2 - 120.1 304.5 - 275.8G	GCA AVBL CALL KAGOSHIMA APP
---	---	--	-----------------------------------

VAR 7°W (2023)

· 5705

4081

3547

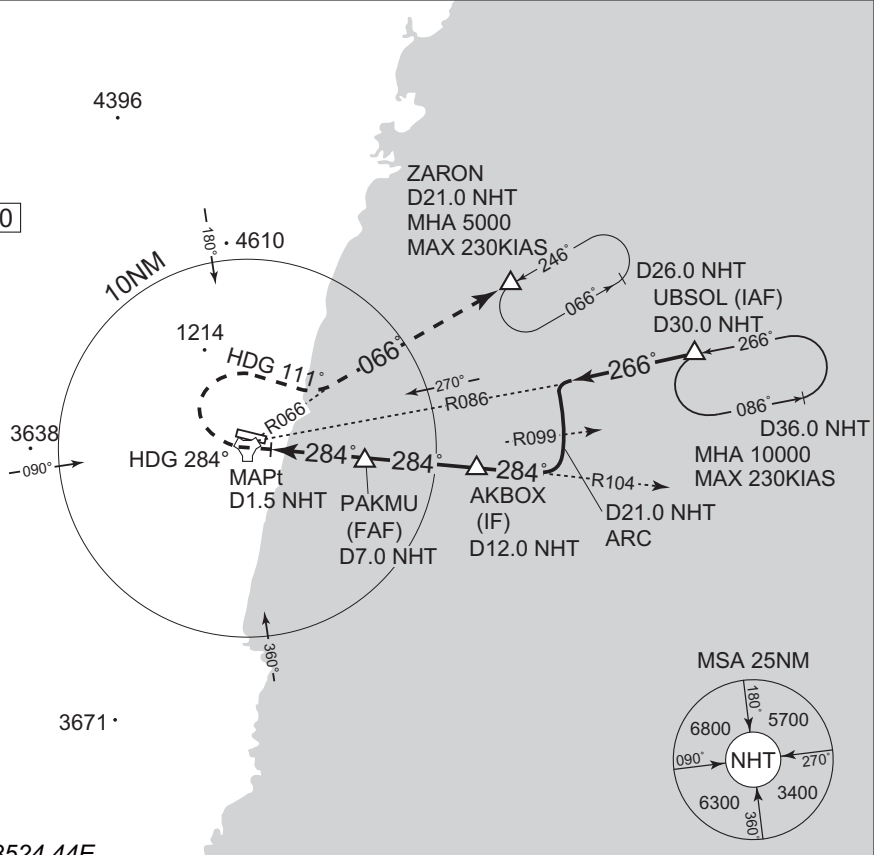
5650

4649

· 5577

· 5164

3671



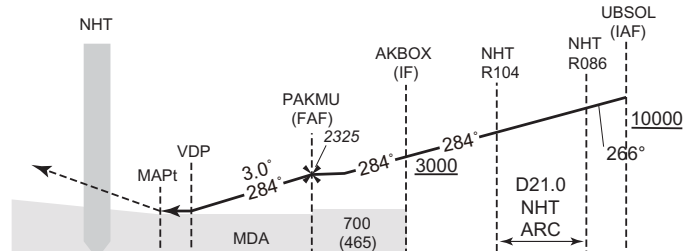
PAKMU(FAF): 320400.71N / 1313524.44E

NM to NHT	MAPt	2	3	4	5	6	FAF
ALT (3.0° APCH Path)	-	733	1051	1370	1688	2006	2325

MISSED APPROACH

Climb to 700FT on HDG 284°, turn right HDG 111° to intercept and proceed via NHT R066 to ZARON and hold at 5000FT. Contact KAGOSHIMA APP.

Timing not authorized for defining the MAPt.



DME to NHT	0.6	1.5	1.7	7.0	12.0
NM to THR	0	0.9	1.1	6.4	11.4

Missed APCH climb gradient MNM 3.0%

MINIMA		THR elev. 235	AD elev. 259	
CAT	MDA(H)	RVR/CMV	CIRCLING	
			MDA(H)	VIS
A	630 (395)	1200	690 (431)	1600
B		1300	710 (451)	
C		1400	840 (581)	2400
D		1600		3200

MINIMA with Missed APCH climb gradient of 2.5% are not established.

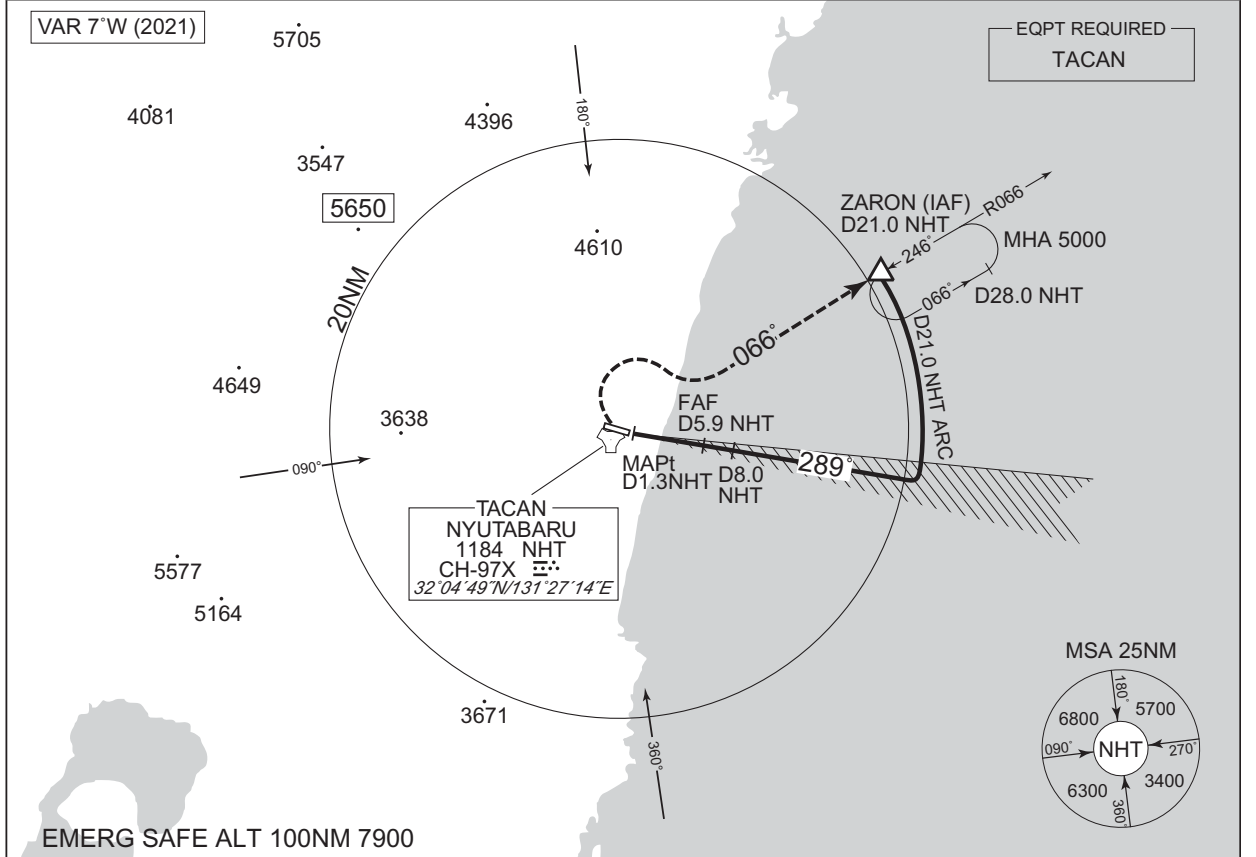
CHANGE : PROC course. Missed APCH course. MINIMA. UBSOL, PAKMU, AKBOX established. NM to THR. ALT(3.0° APCH Path), DME to NHT added. Missed APCH climb gradient MNM added. VAR.

INSTRUMENT APPROACH CHART

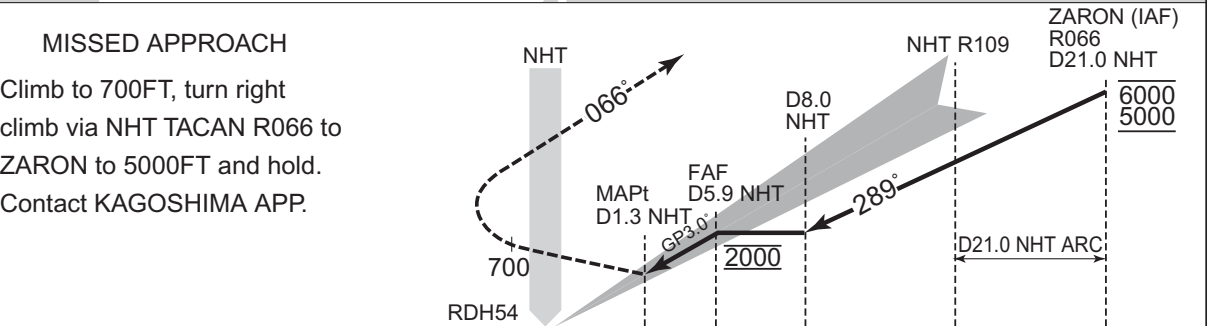
RJFN / NYUTABARU ILS Z or LOC Z RWY28

KAGOSHIMA APP 121.4 - 362.3 120.9 - 261.2	ILS - LOC 111.3 INH ::: ILS-GP 332.3	NYUTA TOWER 236.8 - 126.2 - 120.1 304.5 - 275.8G	GCA AVBL CALL KAGOSHIMA APP
---	--	--	-----------------------------------

CHANGE : VAR. PROC renamed. EQPT REQUIRED added. PROC course. MISSED APPROACH course. MSA. NM to THR added. MDA(H) for CIRCLING.



EMERG SAFE ALT 100NM 7900



NM to THR 0 0.7 5.3 7.4

MINIMA THR elev. 235 AD elev. 259

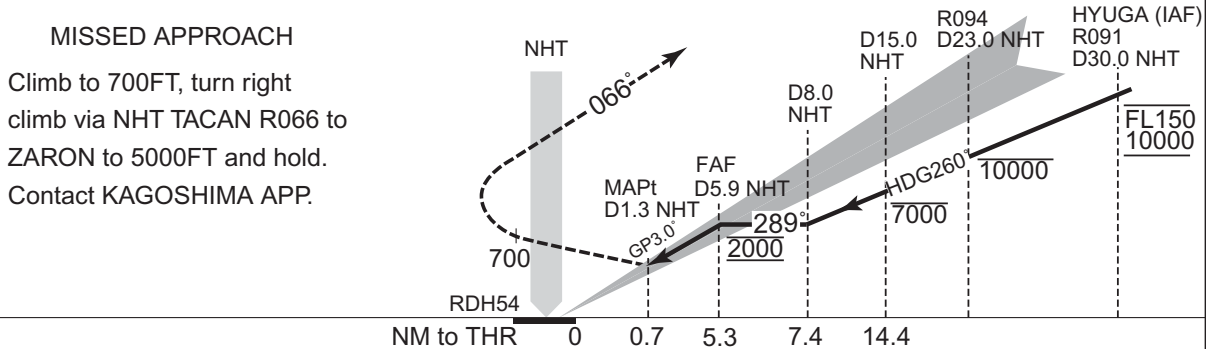
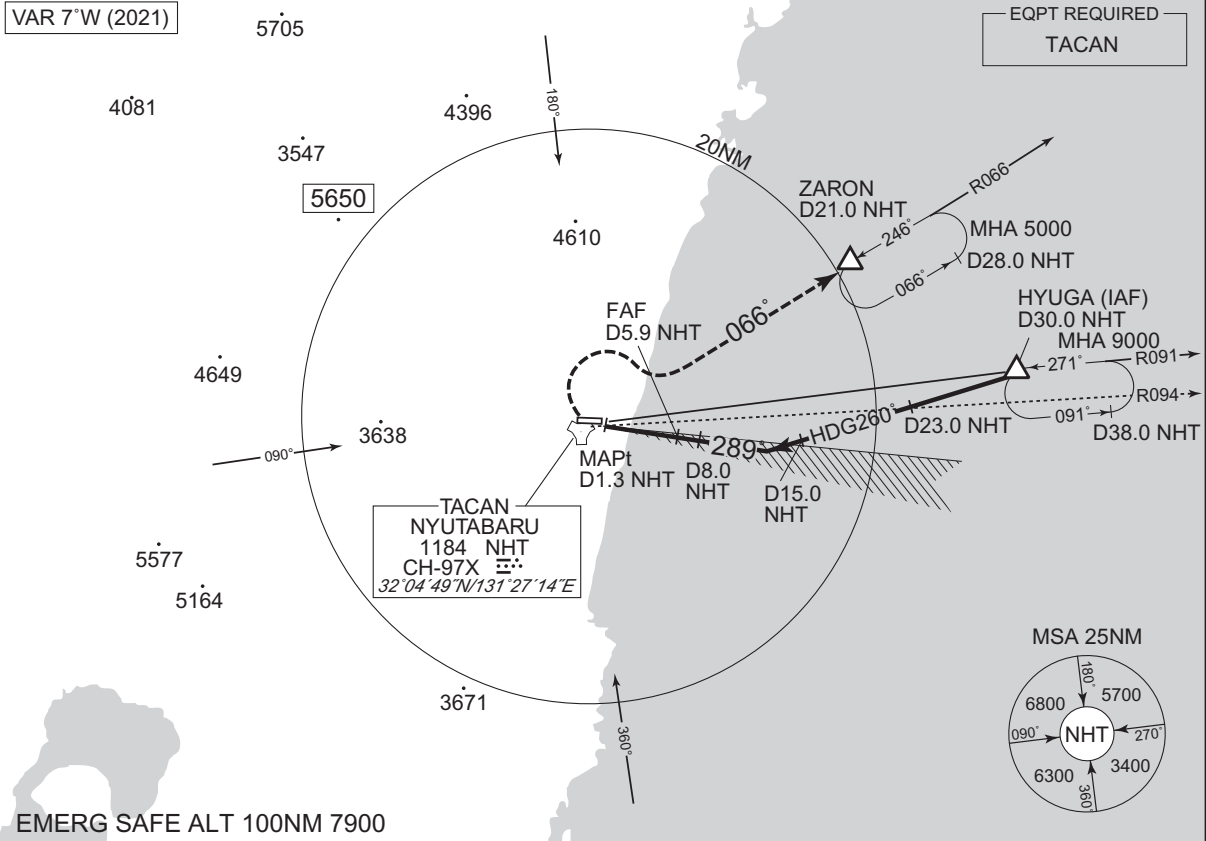
CAT	CAT I		LOC		CIRCLING	
	DA(H)	RVR/CMV	MDA(H)	RVR/CMV	MDA(H)	VIS
A	435 (200)	750	660 (425)	1200	700 (441)	1600
B				1300	720 (461)	
C				1400		2400
D				1600	840 (581)	3200

INSTRUMENT APPROACH CHART

RJFN / NYUTABARU

ILS Y or LOC Y RWY28

KAGOSHIMA APP 121.4 - 362.3 120.9 - 261.2	ILS - LOC 111.3 INH ∴. ILS-GP 332.3	NYUTA TOWER 236.8 - 126.2 -120.1 304.5 - 275.8G	GCA AVBL CALL KAGOSHIMA APP
---	---	---	-----------------------------------



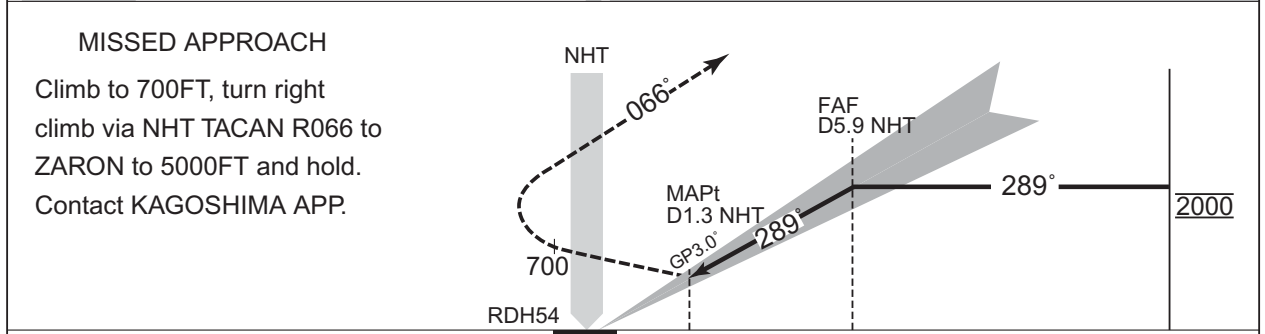
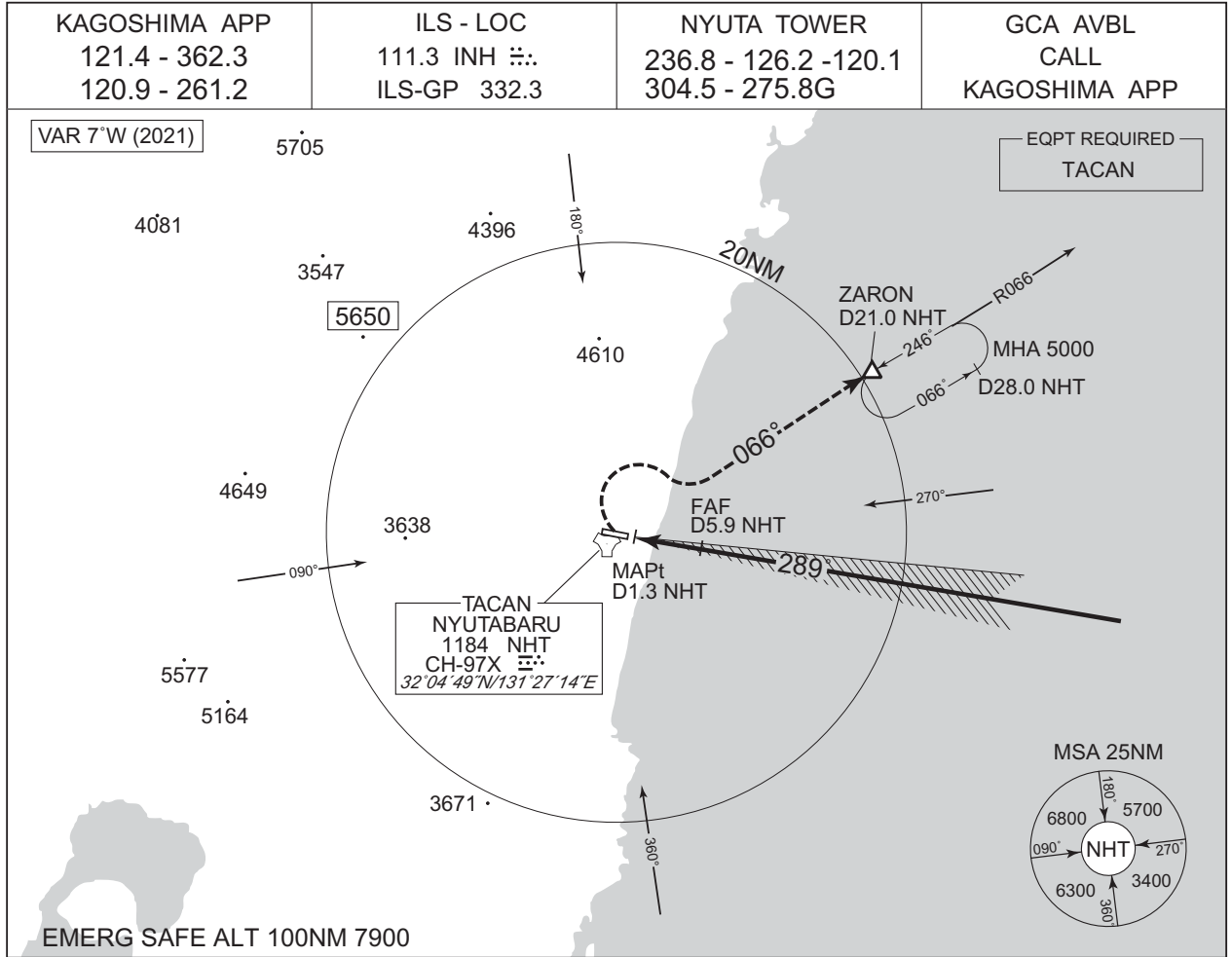
MINIMA		THR elev. 235		AD elev. 259		
CAT	CAT I		LOC		CIRCLING	
	DA(H)	RVR/CMV	MDA(H)	RVR/CMV	MDA(H)	VIS
A	435 (200)	750	660 (425)	1200	700 (441)	1600
B				1300	720 (461)	
C				1400		2400
D				1600	840 (581)	3200

CHANGE : VAR. PROC renamed. EQPT REQUIRED added. PROC course. MISSED APPROACH course. MSA. NM to THR added. MDA(H) for CIRCLING.

INSTRUMENT APPROACH CHART

RJFN / NYUTABARU

ILS X or LOC X RWY28



MINIMA		THR elev. 235		AD elev. 259		
CAT	CAT I		LOC		CIRCLING	
	DA(H)	RVR/ CMV	MDA(H)	RVR/ CMV	MDA(H)	VIS
A	435 (200)	750	660 (425)	1200	700 (441)	1600
B				1300	720 (461)	
C				1400		2400
D				1600	860 (601)	3200

CHANGE : MDA(H) for circling.