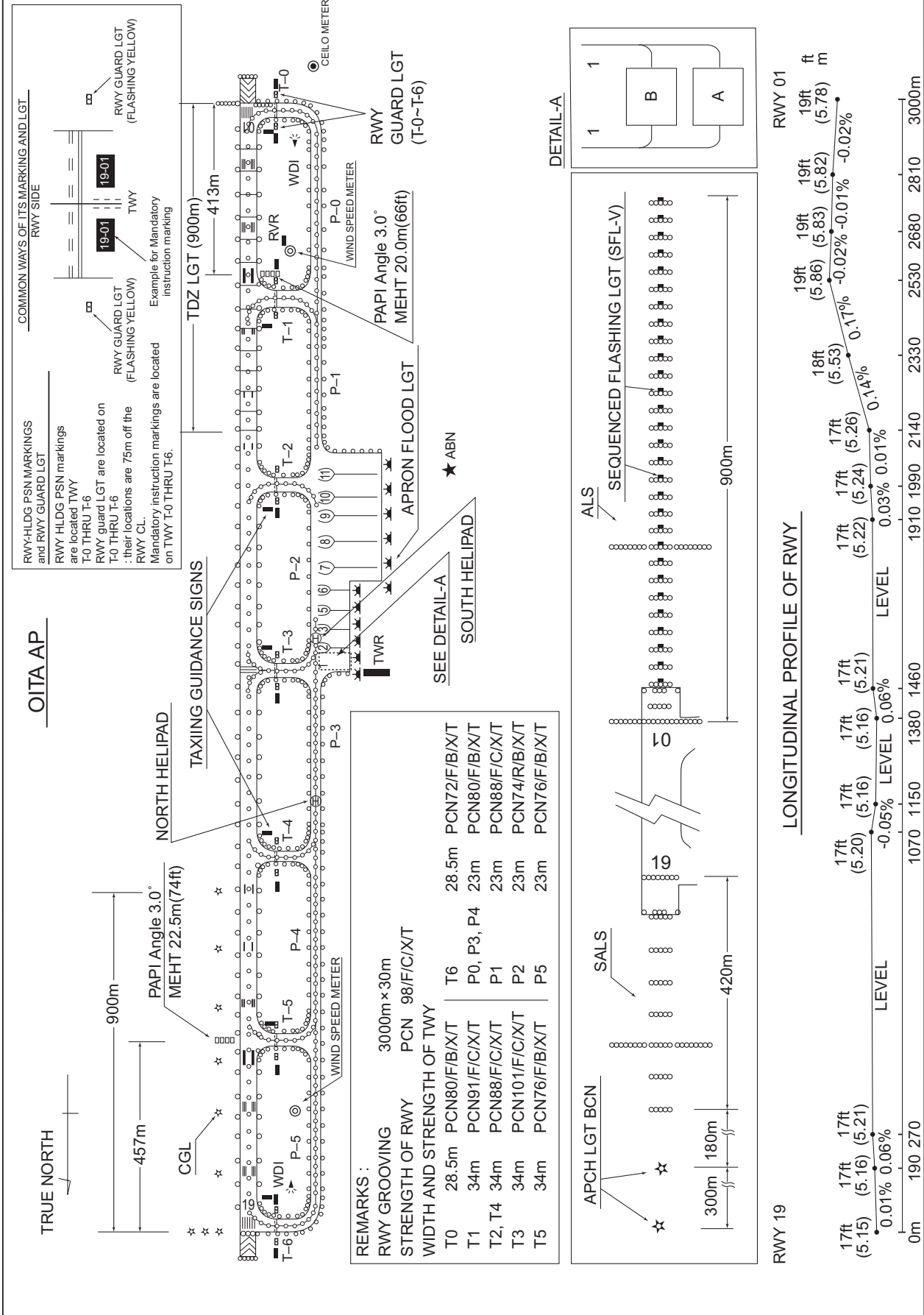


RJFO / OITA

AD CHART

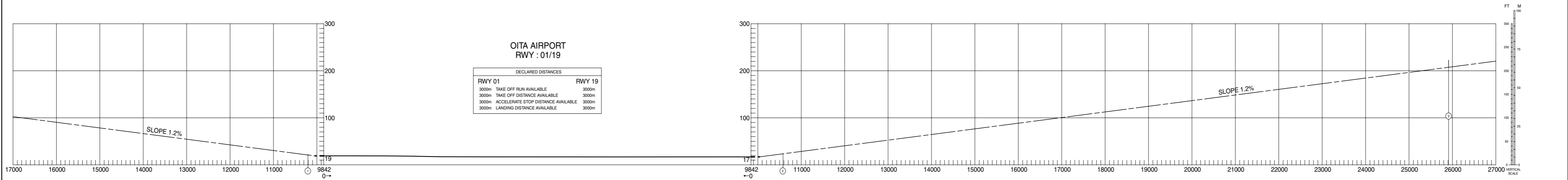
CHANGE : CEILO METER, WIND SPEED METER added.



AERODROME OBSTACLE CHART-ICAO  
TYPE A (OPERATING LIMITATIONS)

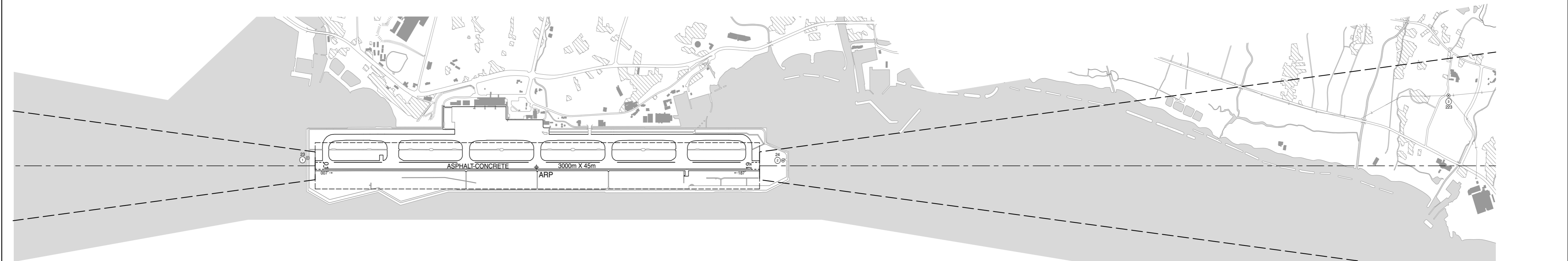
DIMENSIONS AND ELEVATIONS IN FEET BEARINGS ARE MAGNETIC

MAGNETIC VARIATION 7°17' W-APR 2016

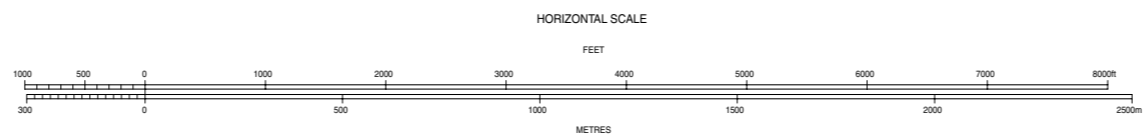


OITA AIRPORT  
RWY : 01/19

DECLARED DISTANCES	
RWY 01	RWY 19
3000m TAKE OFF RUN AVAILABLE	3000m
3000m TAKE OFF DISTANCE AVAILABLE	3000m
3000m ACCELERATE STOP DISTANCE AVAILABLE	3000m
3000m LANDING DISTANCE AVAILABLE	3000m

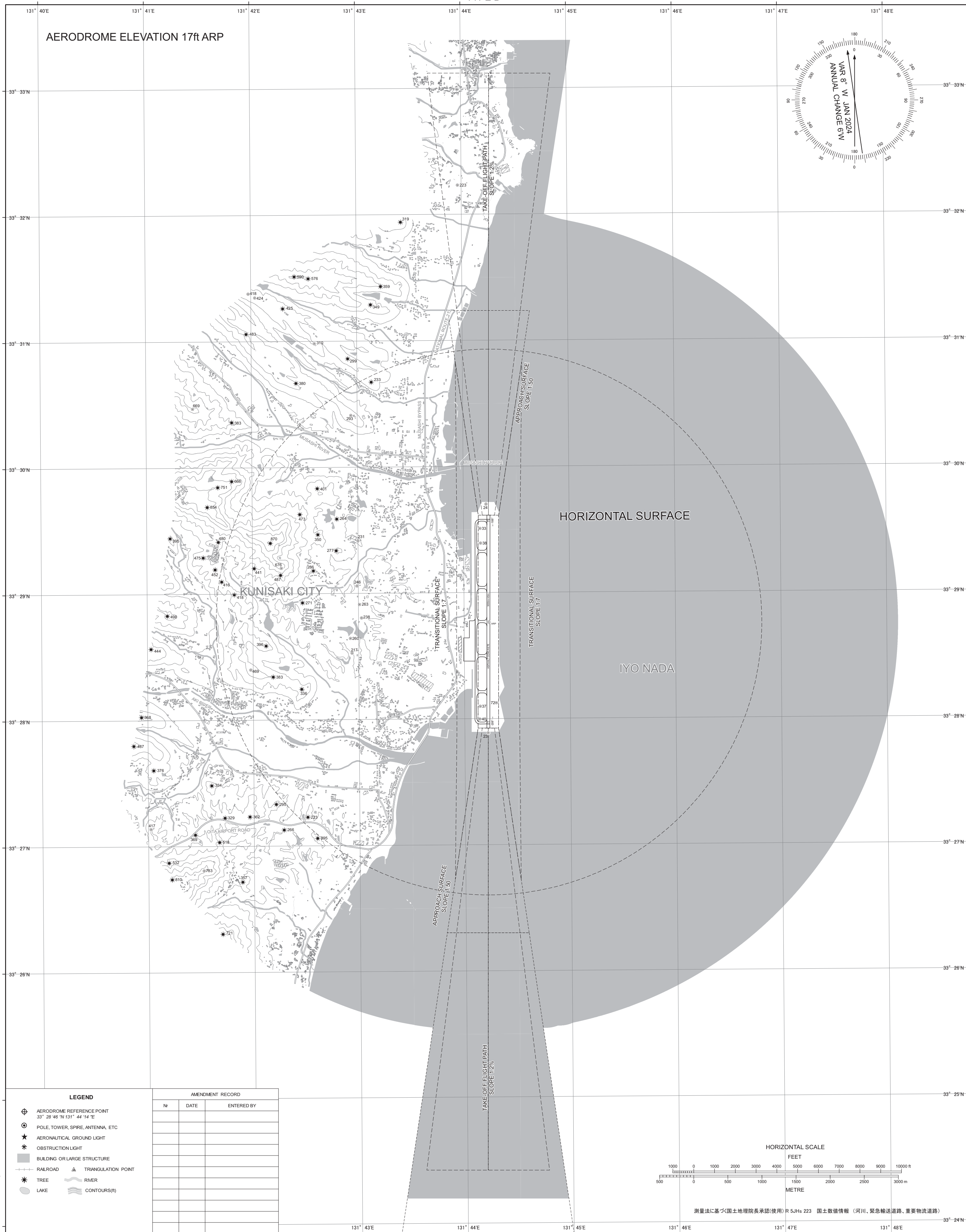


LEGEND		AMENDMENT RECORD		
		Nr	DATE	ENTERED BY
○	IDENTIFICATION NUMBER			
●	POLE, TOWER, SPIRE, ANTENNA, ETC			
✳	TREE			
—+—	RAILROAD			
—+—	TRANSMISSION LINE OR OVERHEAD CABLE			
△	TRIANGULATION POINT			
★	AERONAUTICAL GROUND LIGHT			
	LEVEE			
~~~~~	RIVER			



DIMENSIONS AND ELEVATIONS IN FEET BEARINGS ARE MAGNETIC  
Transverse Mercator Projection

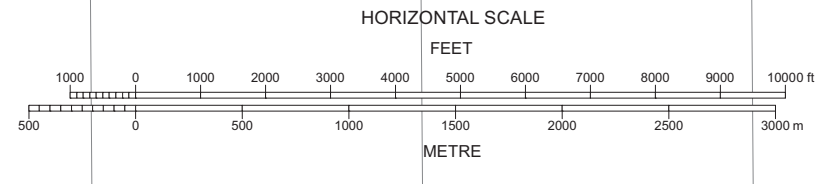
AERODROME OBSTACLE CHART-ICAO  
TYPE B



**LEGEND**

- ⊕ AERODROME REFERENCE POINT  
33° 28' 46" N 131° 44' 14" E
- ⊙ POLE, TOWER, SPIRE, ANTENNA, ETC
- ★ AERONAUTICAL GROUND LIGHT
- ✳ OBSTRUCTION LIGHT
- BUILDING OR LARGE STRUCTURE
- RAILROAD
- △ TRIANGULATION POINT
- ✪ TREE
- ▬ RIVER
- LAKE
- ▬ CONTOURS(1)

AMENDMENT RECORD		
Nr	DATE	ENTERED BY



測量法に基づく国土地理院長承認(使用) R 5JHs 223 国土数値情報 (河川、緊急輸送道路、重要物流道路)

CHANGE : Update.

STANDARD DEPARTURE CHART - INSTRUMENT

RJFO / OITA

SID

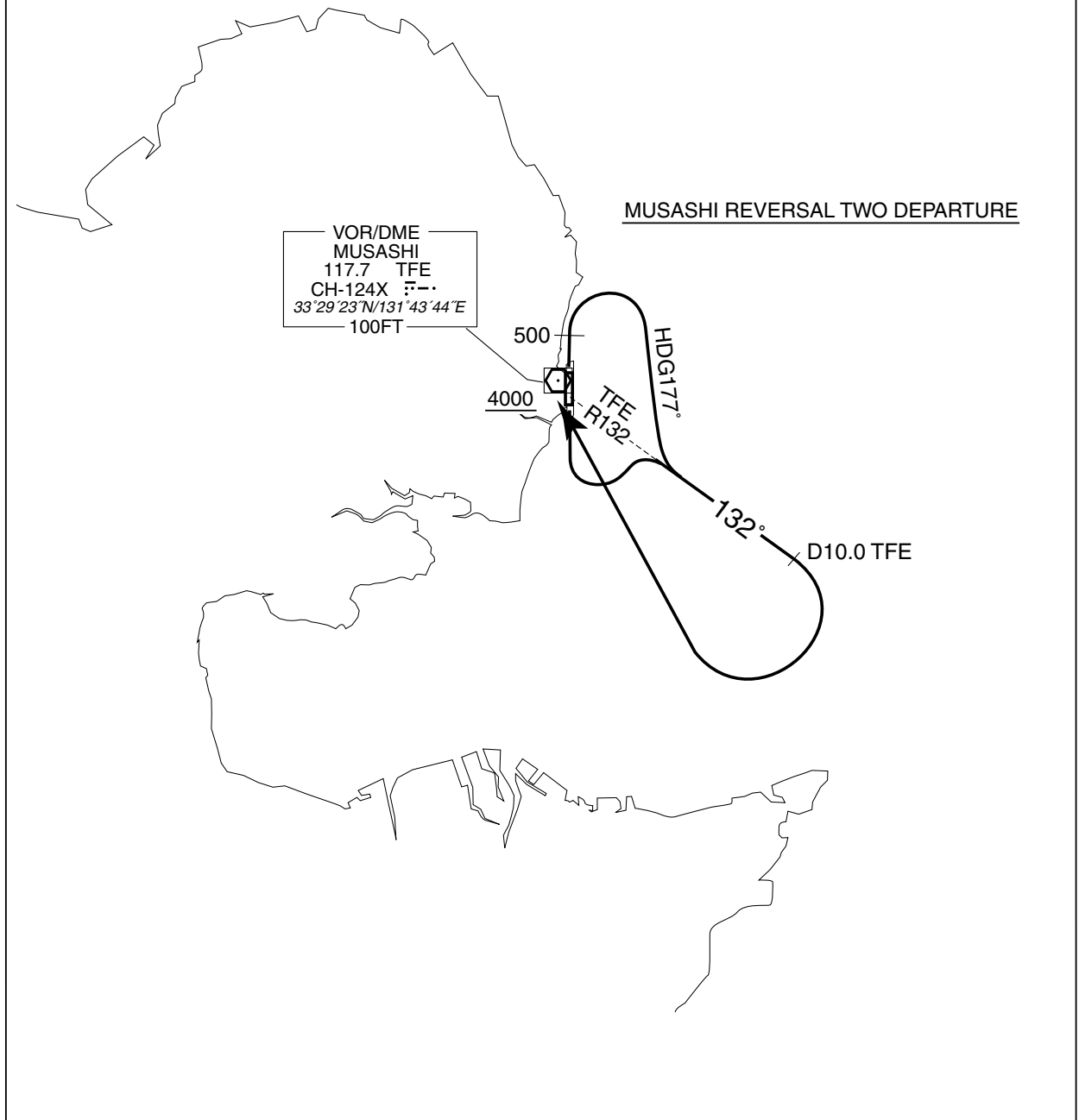
MUSASHI REVERSAL TWO DEPARTURE

RWY01 : Climb RWY HDG to 500FT, turn right HDG177° to intercept and proceed via TFE R132 to TFE 10.0DME,...

RWY19 : Turn left, climb via TFE R132 to TFE 10.0DME, ...turn right, direct to TFE VOR/DME.  
Cross TFE VOR/DME at or above 4000FT.

Note RWY01 : 5.0% climb gradient required up to 500FT.

OBST ALT 266FT located at 2.5NM 351° FM end of RWY01.



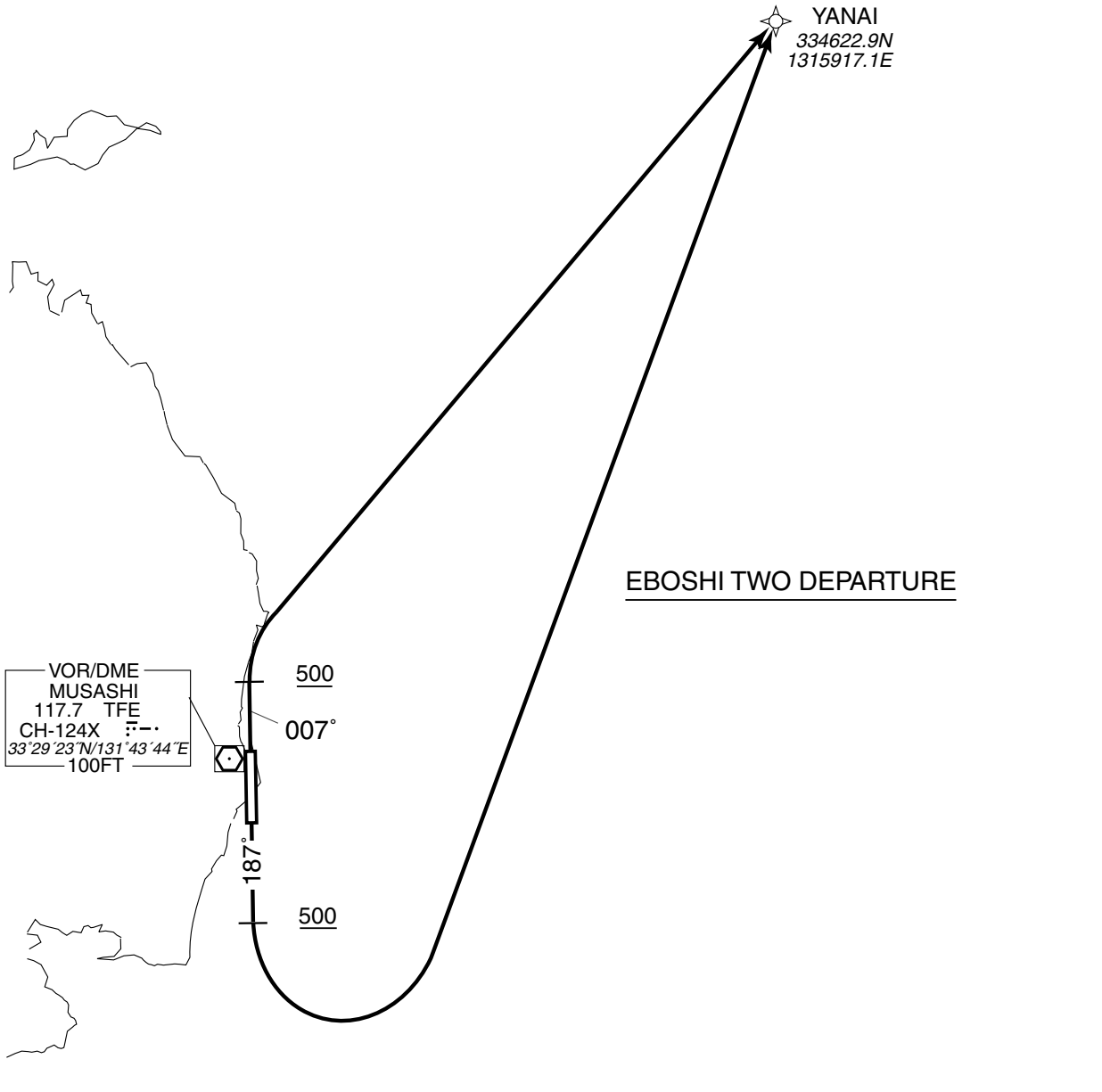
STANDARD DEPARTURE CHART - INSTRUMENT

RJFO / OITA

RNAV SID

EBOSHI TWO DEPARTURE		RNAV1
Note 1 ) DME/DME/IRU or GNSS required. ※The aircraft equipped with only DME/DME/IRU must be able to update its position without delay at the starting point of take-off roll.  2 ) RADAR service required.	Critical DME	-
	DME GAP	RWY01 : DER ~ 19NM to YANAI RWY19 : DER ~ 26NM to YANAI
	Inappropriate NavAids	See AD1.1.6.10.3. Inappropriate NAVAIDs for RNAV1

VAR 7°W (2014)



**EBOSHI TWO DEPARTURE**  
 RWY01 : Climb on HDG007° at or above 500FT, turn right direct to YANAI.  
 RWY19 : Climb on HDG187° at or above 500FT, turn left direct to YANAI.  
  
 Note RWY01 : 5.0% climb gradient required up to 500FT.  
 OBST ALT 266FT located at 2.5NM 351° FM end of RWY01.

STANDARD DEPARTURE CHART - INSTRUMENT

RJFO / OITA

RNAV SID

EBOSHI TWO DEPARTURE

RWY01

Serial Number	Path Descriptor	Waypoint Identifier	Fly Over	Course °M(°T)	Magnetic Variation	Distance (NM)	Turn Direction	Altitude (FT)	Speed (KIAS)	Vertical Angle	Navigation Specification
001	VA	—	—	007 (000.4)	-7.0	—	—	+500	—	—	RNAV1
002	DF	YANAI	—	—	-7.0	—	R	—	—	—	RNAV1

RWY19

Serial Number	Path Descriptor	Waypoint Identifier	Fly Over	Course °M(°T)	Magnetic Variation	Distance (NM)	Turn Direction	Altitude (FT)	Speed (KIAS)	Vertical Angle	Navigation Specification
001	VA	—	—	187 (180.4)	-7.0	—	—	+500	—	—	RNAV1
002	DF	YANAI	—	—	-7.0	—	L	—	—	—	RNAV1

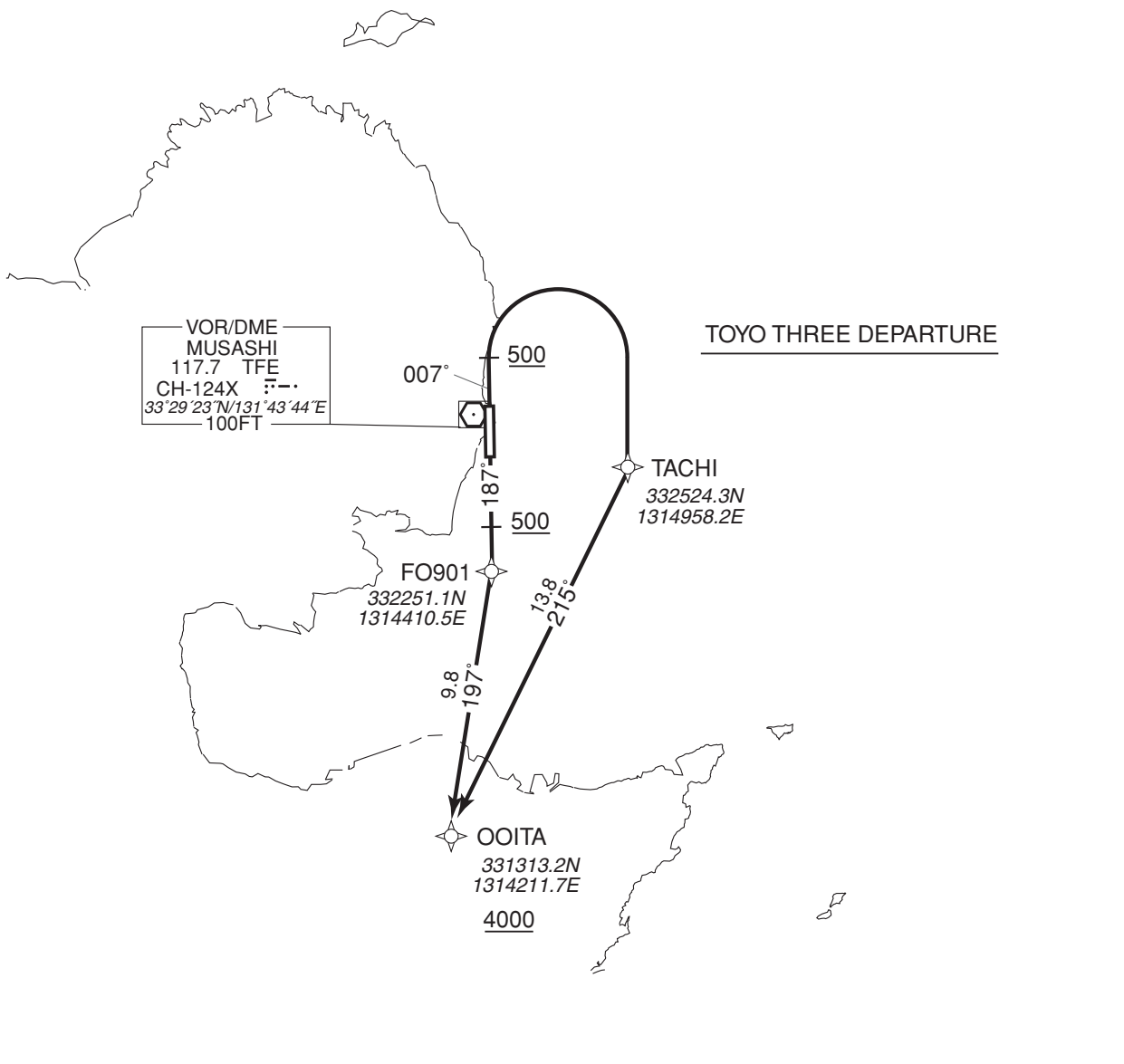
STANDARD DEPARTURE CHART- INSTRUMENT

RJFO / OITA

RNAV SID

TOYO THREE DEPARTURE		RNAV1
Note 1 ) DME/DME/IRU or GNSS required. ※The aircraft equipped with only DME/DME/IRU must be able to update its position without delay at the starting point of take-off roll. 2 ) RADAR service required.	Critical DME	-
	DME GAP	RWY01 : DER ~ 9NM to TACHI RWY19 : DER ~ 3NM to FO901
	Inappropriate Nav aids	See AD1.1.6.10.3. Inappropriate NAVAIDs for RNAV1

VAR 7°W (2014)



**TOYO THREE DEPARTURE**  
 RWY01 : Climb on HDG007° at or above 500FT, turn right direct to TACHI,...  
 RWY19 : Climb on HDG187° at or above 500FT, direct to FO901,...  
 ...to OOITA at or above 4000FT.  
 Note RWY01 : 5.0% climb gradient required up to 500FT.  
 OBST ALT 266FT located at 2.5NM 351° FM end of RWY01.

STANDARD DEPARTURE CHART- INSTRUMENT

RJFO / OITA

RNAV SID

TOYO THREE DEPARTURE

RWY01

Serial Number	Path Descriptor	Waypoint Identifier	Fly Over	Course °M(°T)	Magnetic Variation	Distance (NM)	Turn Direction	Altitude (FT)	Speed (KIAS)	Vertical Angle	Navigation Specification
001	VA	—	—	007 (000.4)	-7.0	—	—	+500	—	—	RNAV1
002	DF	TACHI	—	—	-7.0	—	R	—	—	—	RNAV1
003	TF	OOITA	—	215 (208.1)	-7.0	13.8	—	+4000	—	—	RNAV1

RWY19

Serial Number	Path Descriptor	Waypoint Identifier	Fly Over	Course °M(°T)	Magnetic Variation	Distance (NM)	Turn Direction	Altitude (FT)	Speed (KIAS)	Vertical Angle	Navigation Specification
001	VA	—	—	187 (180.4)	-7.0	—	—	+500	—	—	RNAV1
002	DF	FO901	—	—	-7.0	—	—	—	—	—	RNAV1
003	TF	OOITA	—	197 (189.8)	-7.0	9.8	—	+4000	—	—	RNAV1



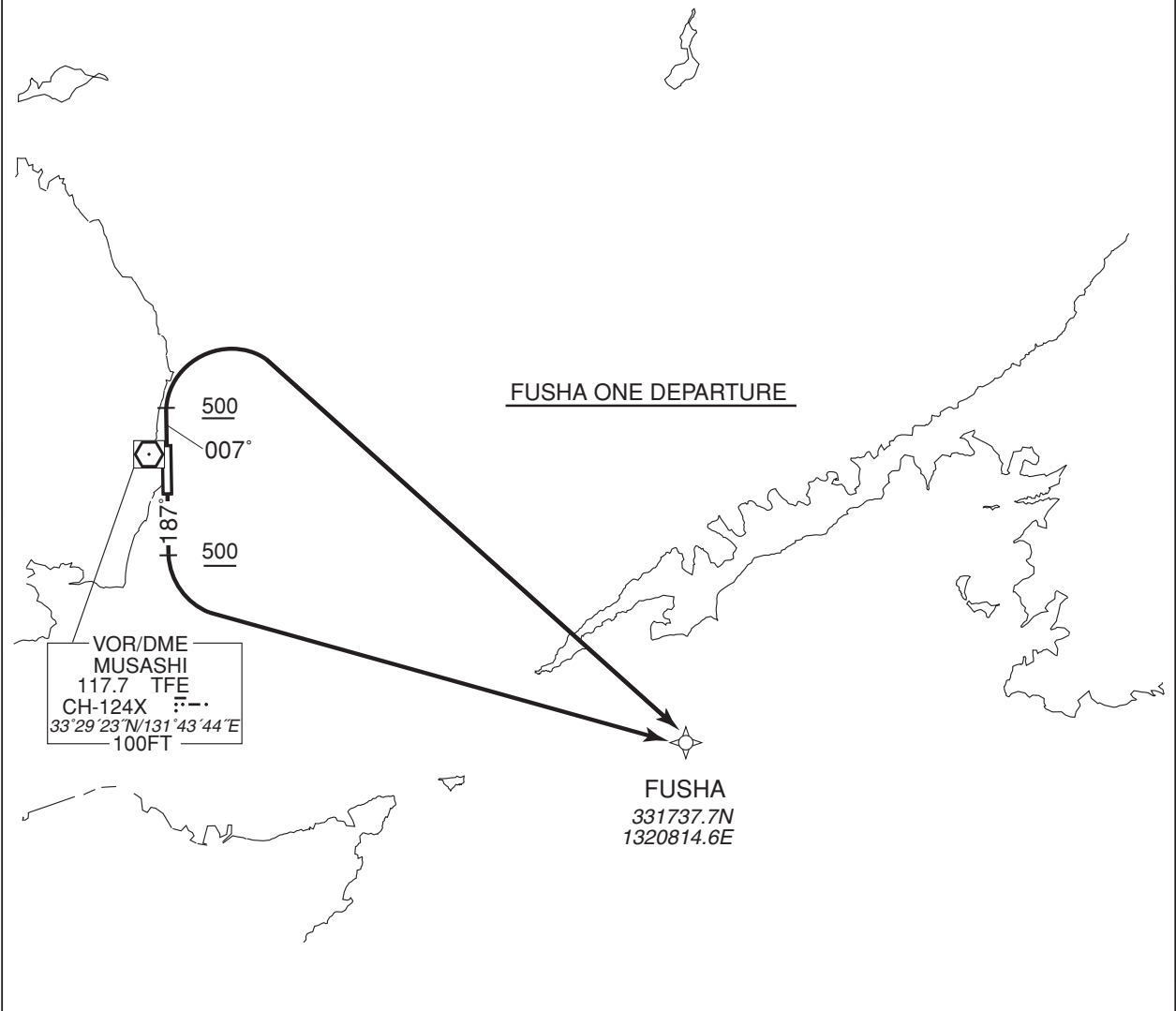
STANDARD DEPARTURE CHART - INSTRUMENT

RJFO / OITA

RNAV SID

FUSHA ONE DEPARTURE		RNAV1
Note 1) DME/DME/IRU or GNSS required. ※The aircraft equipped with only DME/DME/IRU must be able to update its position without delay at the starting point of take-off roll. 2) RADAR service required.	Critical DME	RWY01 : MYE 25NM to FUSHA ~ 24NM to FUSHA
	DME GAP	RWY01 : DER ~ 25NM to FUSHA RWY19 : DER ~ 23NM to FUSHA
	Inappropriate Nav aids	See AD1.1.6.10.3. Inappropriate NAV AIDs for RNAV1

VAR 7°W (2014)



FUSHA ONE DEPARTURE

RWY01 : Climb on HDG007° at or above 500FT, turn right direct to FUSHA.

RWY19 : Climb on HDG187° at or above 500FT, turn left direct to FUSHA.

Note RWY01 : 5.0% climb gradient required up to 500FT.  
OBST ALT 266FT located at 2.5NM 351° FM end of RWY01.

STANDARD DEPARTURE CHART - INSTRUMENT

RJFO / OITA

RNAV SID

FUSHA ONE DEPARTURE

RWY01

Serial Number	Path Descriptor	Waypoint Identifier	Fly Over	Course °M(°T)	Magnetic Variation	Distance (NM)	Turn Direction	Altitude (FT)	Speed (KIAS)	Vertical Angle	Navigation Specification
001	VA	—	—	007 (000.4)	-7.0	—	—	+500	—	—	RNAV1
002	DF	FUSHA	—	—	-7.0	—	R	—	—	—	RNAV1

RWY19

Serial Number	Path Descriptor	Waypoint Identifier	Fly Over	Course °M(°T)	Magnetic Variation	Distance (NM)	Turn Direction	Altitude (FT)	Speed (KIAS)	Vertical Angle	Navigation Specification
001	VA	—	—	187 (180.4)	-7.0	—	—	+500	—	—	RNAV1
002	DF	FUSHA	—	—	-7.0	—	L	—	—	—	RNAV1

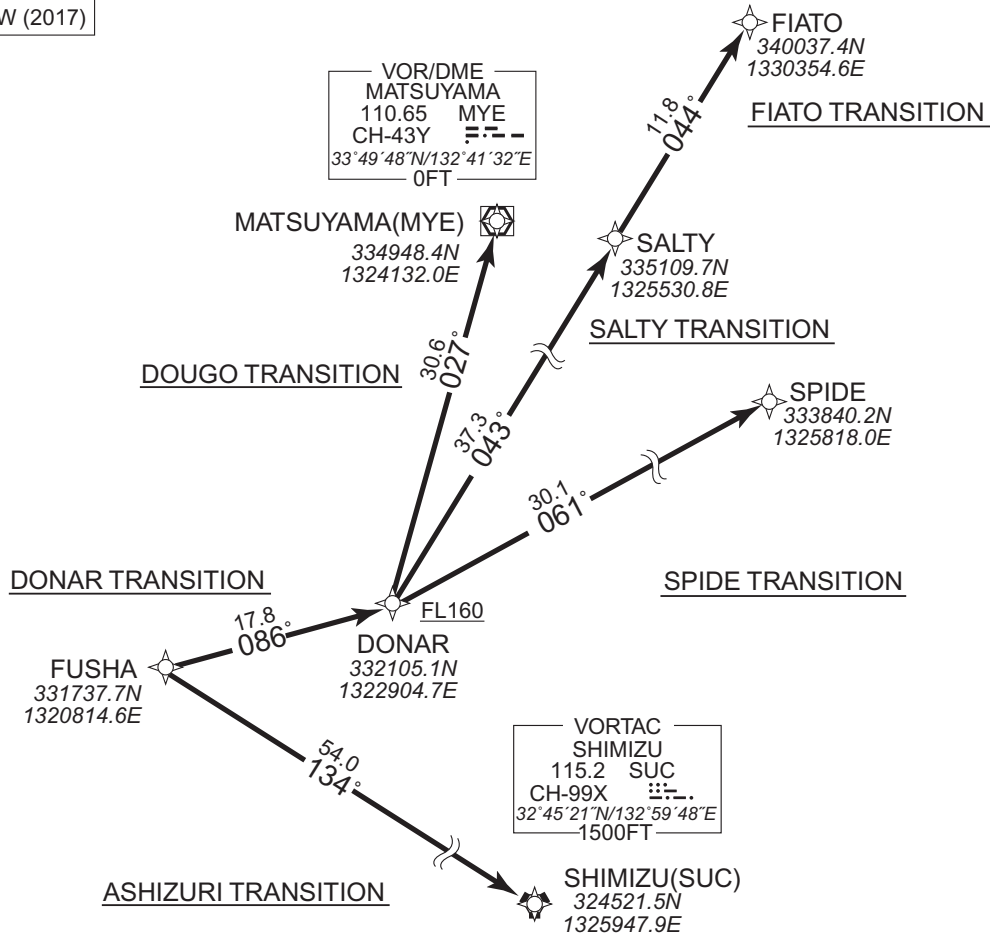
STANDARD DEPARTURE CHART - INSTRUMENT

RJFO / OITA

RNAV TRANSITION

DONAR TRANSITION / DOUGO TRANSITION / FIATO TRANSITION SALTY TRANSITION / SPIDE TRANSITION / ASHIZURI TRANSITION		RNAV1
Note 1) DME/DME/IRU or GNSS required. 2) RADAR service required.	Critical DME	-
	DME GAP	-
	Inappropriate Nav aids	See AD1.1.6.10.3. Inappropriate NAVAIDs for RNAV1

VAR 7°W (2017)



DONAR TRANSITION

From FUSHA, to DONAR at or above FL160.

DOUGO TRANSITION

From FUSHA, to DONAR at or above FL160, to MYE.

FIATO TRANSITION

From FUSHA, to DONAR at or above FL160, to SALTY, to FIATO.

SALTY TRANSITION

From FUSHA, to DONAR at or above FL160, to SALTY.

SPIDE TRANSITION

From FUSHA, to DONAR at or above FL160, to SPIDE.

ASHIZURI TRANSITION

From FUSHA, to SUC.

CHANGE : Critical DME deleted.

STANDARD DEPARTURE CHART - INSTRUMENT

RJFO / OITA

RNAV TRANSITION

DONAR TRANSITION

Serial Number	Path Descriptor	Waypoint Identifier	Fly Over	Course °M(°T)	Magnetic Variation	Distance (NM)	Turn Direction	Altitude (FT)	Speed (KIAS)	Vertical Angle	Navigation Specification
001	IF	FUSHA	-	-	-7.4	-	-	-	-	-	RNAV1
002	TF	DONAR	-	086 (078.7)	-7.4	17.8	-	+FL160	-	-	RNAV1

DOUGO TRANSITION

Serial Number	Path Descriptor	Waypoint Identifier	Fly Over	Course °M(°T)	Magnetic Variation	Distance (NM)	Turn Direction	Altitude (FT)	Speed (KIAS)	Vertical Angle	Navigation Specification
001	IF	FUSHA	-	-	-7.4	-	-	-	-	-	RNAV1
002	TF	DONAR	-	086 (078.7)	-7.4	17.8	-	+FL160	-	-	RNAV1
003	TF	MYE	-	027 (019.8)	-7.4	30.6	-	-	-	-	RNAV1

FIATO TRANSITION

Serial Number	Path Descriptor	Waypoint Identifier	Fly Over	Course °M(°T)	Magnetic Variation	Distance (NM)	Turn Direction	Altitude (FT)	Speed (KIAS)	Vertical Angle	Navigation Specification
001	IF	FUSHA	-	-	-7.4	-	-	-	-	-	RNAV1
002	TF	DONAR	-	086 (078.7)	-7.4	17.8	-	+FL160	-	-	RNAV1
003	TF	SALTY	-	043 (036.1)	-7.4	37.3	-	-	-	-	RNAV1
004	TF	FIATO	-	044 (036.3)	-7.4	11.8	-	-	-	-	RNAV1

SALTY TRANSITION

Serial Number	Path Descriptor	Waypoint Identifier	Fly Over	Course °M(°T)	Magnetic Variation	Distance (NM)	Turn Direction	Altitude (FT)	Speed (KIAS)	Vertical Angle	Navigation Specification
001	IF	FUSHA	-	-	-7.4	-	-	-	-	-	RNAV1
002	TF	DONAR	-	086 (078.7)	-7.4	17.8	-	+FL160	-	-	RNAV1
003	TF	SALTY	-	043 (036.1)	-7.4	37.3	-	-	-	-	RNAV1

STANDARD DEPARTURE CHART - INSTRUMENT

RJFO / OITA

RNAV TRANSITION

SPIDE TRANSITION

Serial Number	Path Descriptor	Waypoint Identifier	Fly Over	Course °M(°T)	Magnetic Variation	Distance (NM)	Turn Direction	Altitude (FT)	Speed (KIAS)	Vertical Angle	Navigation Specification
001	IF	FUSHA	—	—	-7.4	—	—	—	—	—	RNAV1
002	TF	DONAR	—	086 (078.7)	-7.4	17.8	—	+FL160	—	—	RNAV1
003	TF	SPIDE	—	061 (054.1)	-7.4	30.1	—	—	—	—	RNAV1

ASHIZURI TRANSITION

Serial Number	Path Descriptor	Waypoint Identifier	Fly Over	Course °M(°T)	Magnetic Variation	Distance (NM)	Turn Direction	Altitude (FT)	Speed (KIAS)	Vertical Angle	Navigation Specification
001	IF	FUSHA	—	—	-7.4	—	—	—	—	—	RNAV1
002	TF	SUC	—	134 (126.5)	-7.4	54.0	—	—	—	—	RNAV1

STANDARD ARRIVAL CHART- INSTRUMENT

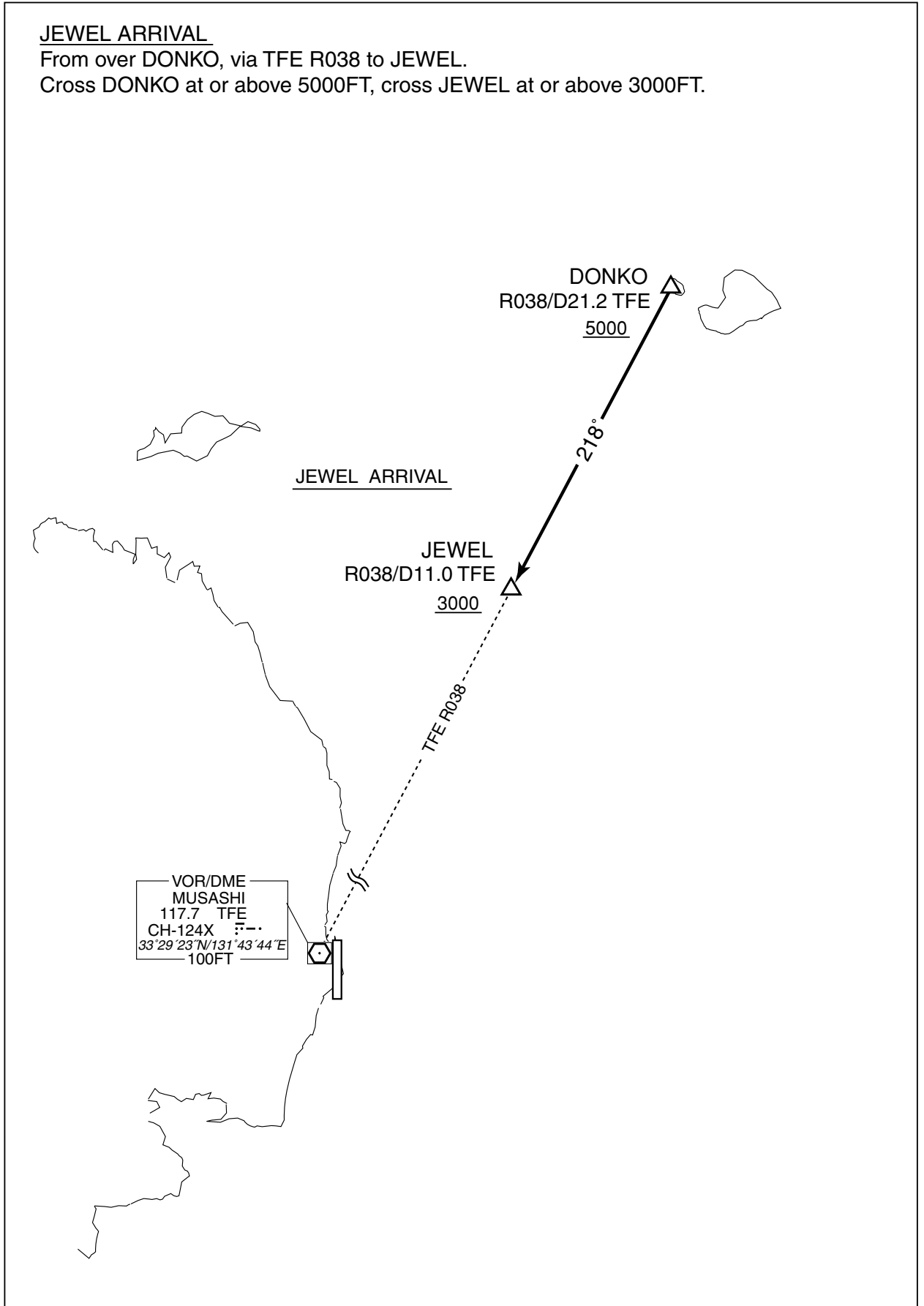
RJFO / OITA

STAR

JEWEL ARRIVAL

From over DONKO, via TFE R038 to JEWEL.

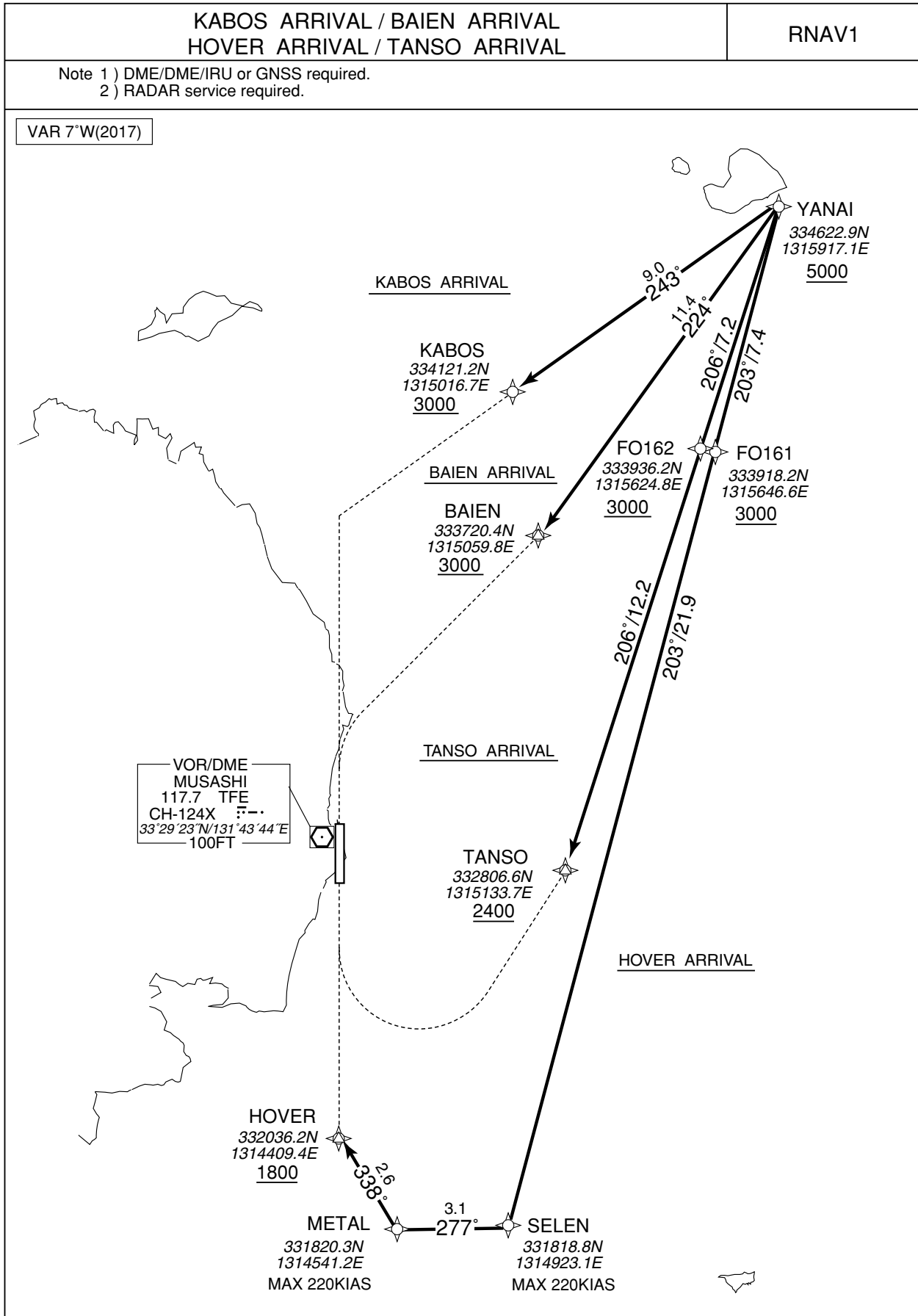
Cross DONKO at or above 5000FT, cross JEWEL at or above 3000FT.



STANDARD ARRIVAL CHART- INSTRUMENT

RJFO / OITA

RNAV STAR



STANDARD ARRIVAL CHART - INSTRUMENT

RJFO / OITA

RNAV STAR

KABOS ARRIVAL

From YANAI at or above 5000FT, to KABOS at or above 3000FT.

Critical DME	-
DME GAP	-
Inappropriate Navaids	See AD1.1.6.10.3. Inappropriate NAVAIDs for RNAV1

Serial Number	Path Descriptor	Waypoint Identifier	Fly Over	Course °M(°T)	Magnetic Variation	Distance (NM)	Turn Direction	Altitude (FT)	Speed (KIAS)	Vertical Angle	Navigation Specification
001	IF	YANAI	-	-	-7.4	-	-	+5000	-	-	RNAV1
002	TF	KABOS	-	243 (236.2)	-7.4	9.0	-	+3000	-	-	RNAV1

HOVER ARRIVAL

From YANAI at or above 5000FT, to FO161 at or above 3000FT, to SELEN, to METAL, to HOVER at or above 1800FT.

Critical DME	-
DME GAP	-
Inappropriate Navaids	See AD1.1.6.10.3. Inappropriate NAVAIDs for RNAV1

Serial Number	Path Descriptor	Waypoint Identifier	Fly Over	Course °M(°T)	Magnetic Variation	Distance (NM)	Turn Direction	Altitude (FT)	Speed (KIAS)	Vertical Angle	Navigation Specification
001	IF	YANAI	-	-	-7.4	-	-	+5000	-	-	RNAV1
002	TF	FO161	-	203 (196.4)	-7.4	7.4	-	+3000	-	-	RNAV1
003	TF	SELEN	-	203 (196.4)	-7.4	21.9	-	-	-220	-	RNAV1
004	TF	METAL	-	277 (270.5)	-7.4	3.1	-	-	-220	-	RNAV1
005	TF	HOVER	-	338 (330.5)	-7.4	2.6	-	+1800	-	-	RNAV1



STANDARD ARRIVAL CHART - INSTRUMENT

RJFO / OITA

RNAV STAR

BAIEN ARRIVAL

From YANAI at or above 5000FT, to BAIEN at or above 3000FT.

Critical DME	–
DME GAP	–
Inappropriate Nav aids	See AD1.1.6.10.3. Inappropriate NAVAIDs for RNAV1

Serial Number	Path Descriptor	Waypoint Identifier	Fly Over	Course °M(°T)	Magnetic Variation	Distance (NM)	Turn Direction	Altitude (FT)	Speed (KIAS)	Vertical Angle	Navigation Specification
001	IF	YANAI	–	–	-7.4	–	–	+5000	–	–	RNAV1
002	TF	BAIEN	–	224 (217.4)	-7.4	11.4	–	+3000	–	–	RNAV1

TANSO ARRIVAL

From YANAI at or above 5000FT, to FO162 at or above 3000FT, to TANSO at or above 2400FT.

Critical DME	–
DME GAP	–
Inappropriate Nav aids	See AD1.1.6.10.3. Inappropriate NAVAIDs for RNAV1

Serial Number	Path Descriptor	Waypoint Identifier	Fly Over	Course °M(°T)	Magnetic Variation	Distance (NM)	Turn Direction	Altitude (FT)	Speed (KIAS)	Vertical Angle	Navigation Specification
001	IF	YANAI	–	–	-7.4	–	–	+5000	–	–	RNAV1
002	TF	FO162	–	206 (199.4)	-7.4	7.2	–	+3000	–	–	RNAV1
003	TF	TANSO	–	206 (199.4)	-7.4	12.2	–	+2400	–	–	RNAV1

STANDARD ARRIVAL CHART - INSTRUMENT

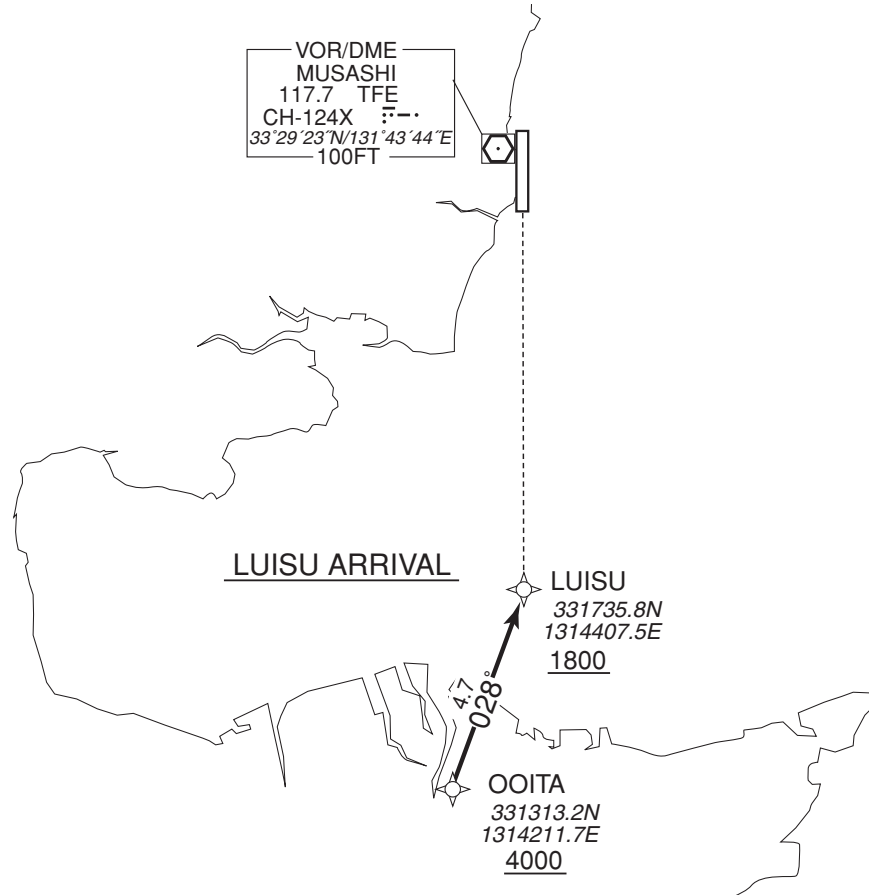
RJFO / OITA

RNAV STAR

<b>LUISU ARRIVAL</b>	<b>RNAV1</b>
----------------------	--------------

Note 1 ) DME/DME/IRU or GNSS required.  
2 ) RADAR service required.

VAR 7°W(2016)



LUISU ARRIVAL

From OOITA at or above 4000FT, to LUISU at or above 1800FT.

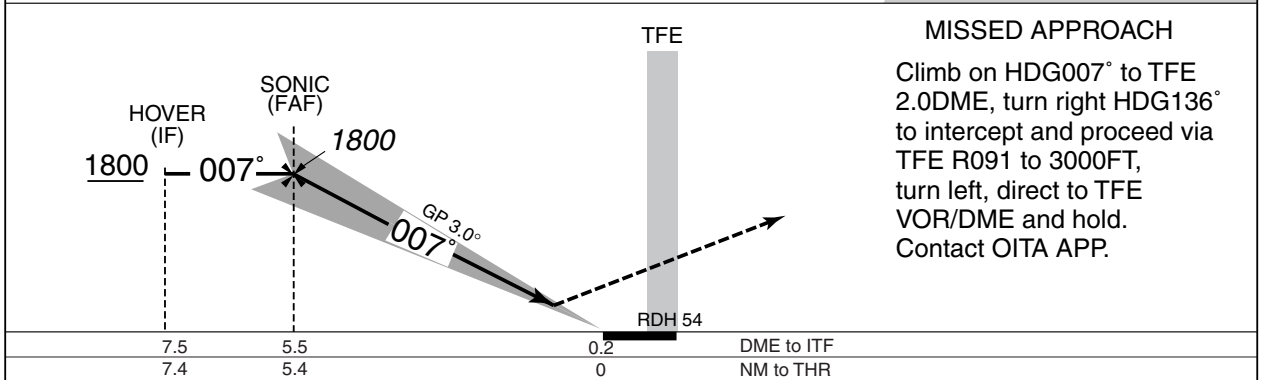
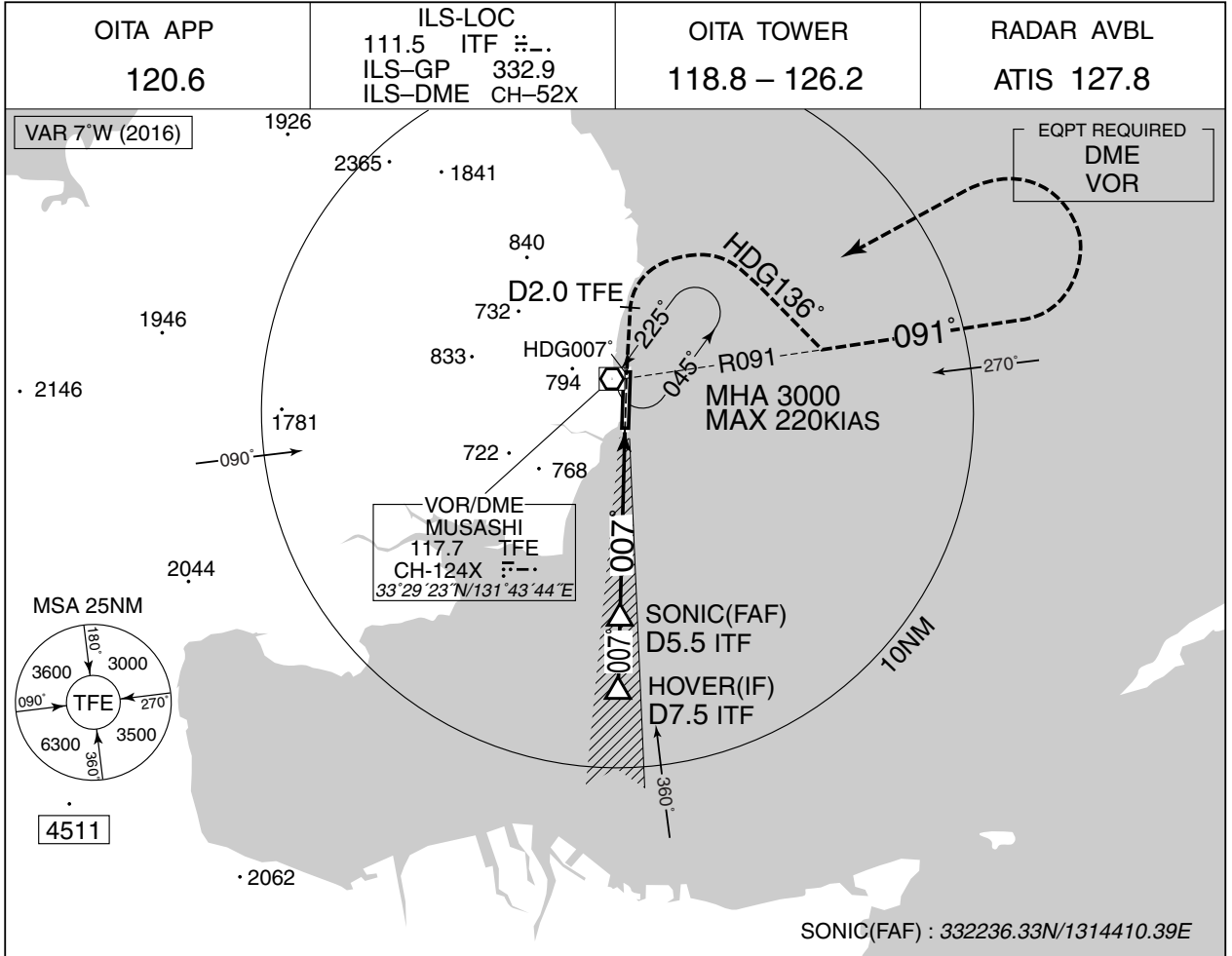
Critical DME	-
DME GAP	-
Inappropriate Navaids	See AD1.1.6.10.3. Inappropriate NAVAIDs for RNAV1

Serial Number	Path Descriptor	Waypoint Identifier	Fly Over	Course °M(°T)	Magnetic Variation	Distance (NM)	Turn Direction	Altitude (FT)	Speed (KIAS)	Vertical Angle	Navigation Specification
001	IF	OOITA	-	-	-7.3	-	-	+4000	-	-	RNAV1
002	TF	LUISU	-	028 (020.2)	-7.3	4.7	-	+1800	-	-	RNAV1

INSTRUMENT APPROACH CHART

RJFO / OITA

ILS Z RWY01



Missed APCH climb gradient MNM 4.0%.

MINIMA	THR elev. 19	AD elev. 17	
CAT	CAT I		CIRCLING
	DA(H)	RVR/ CMV	MDA(H)    VIS
A	219 (200)	550	430 (413)
B			470 (453)
C			690 (673)
D			760 (743)
1600			
2400			
3200			

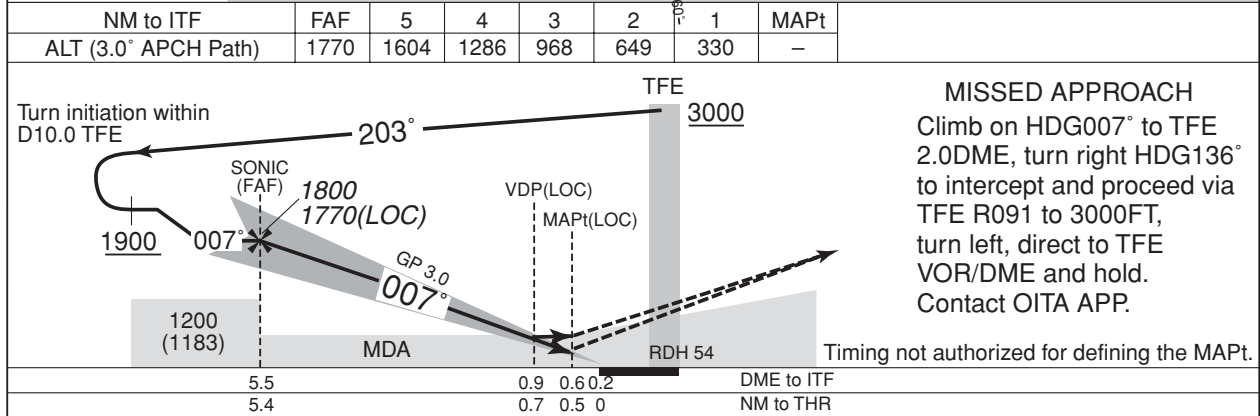
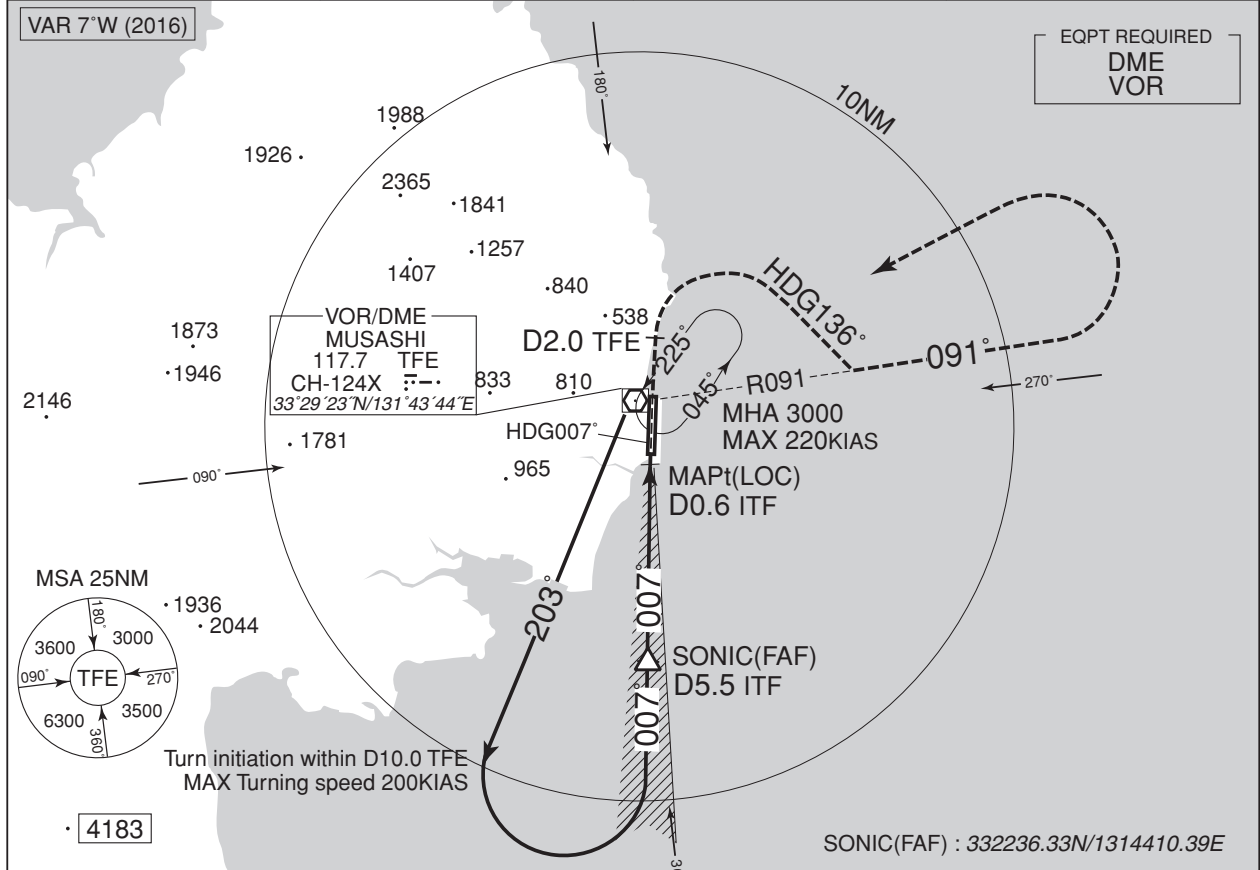
MINIMA with Missed APCH climb gradient of 2.5% are not established.  
Circling to EAST side of RWY only.

INSTRUMENT APPROACH CHART

RJFO / OITA

ILS Y or LOC Y RWY01

OITA APP 120.6	ILS-LOC 111.5 ITF #-- ILS-GP 332.9 ILS-DME CH-52X	OITA TOWER 118.8 - 126.2	RADAR AVBL ATIS 127.8
-------------------	------------------------------------------------------------	-----------------------------	--------------------------



Missed APCH climb gradient MNM 4.0%.

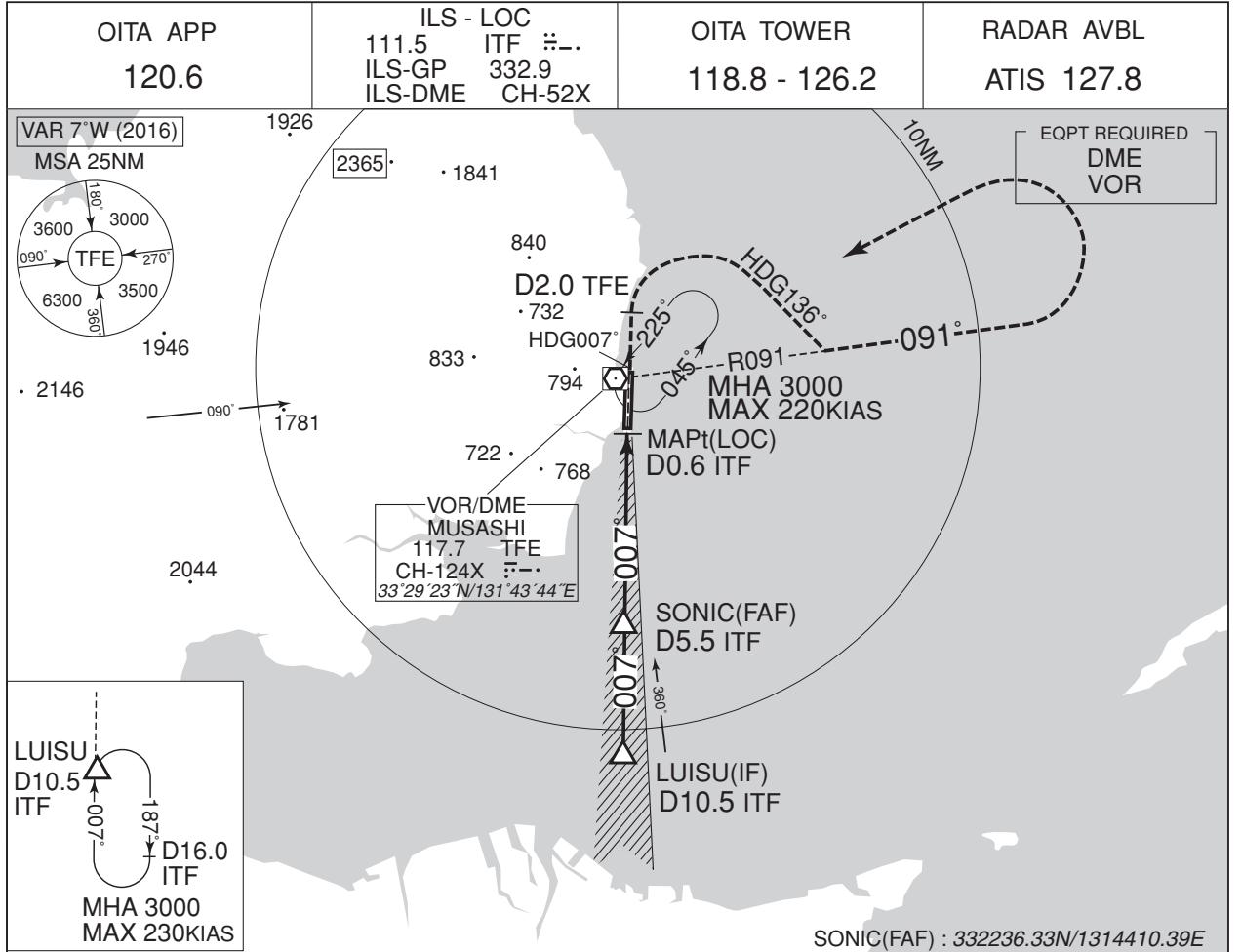
MINIMA	THR elev. 19	AD elev. 17				
CAT I	LOC	CIRCLING				
DA(H)	RVR/CMV	MDA(H)	RVR/CMV	MDA(H)	VIS	
A	219 (200)	550	300 (283)	800	430 (413)	1600
B					470 (453)	
C					690 (673)	
D				1200	760 (743)	3200

MINIMA with Missed APCH climb gradient of 2.5% are not established.  
Circling to EAST side of RWY only.

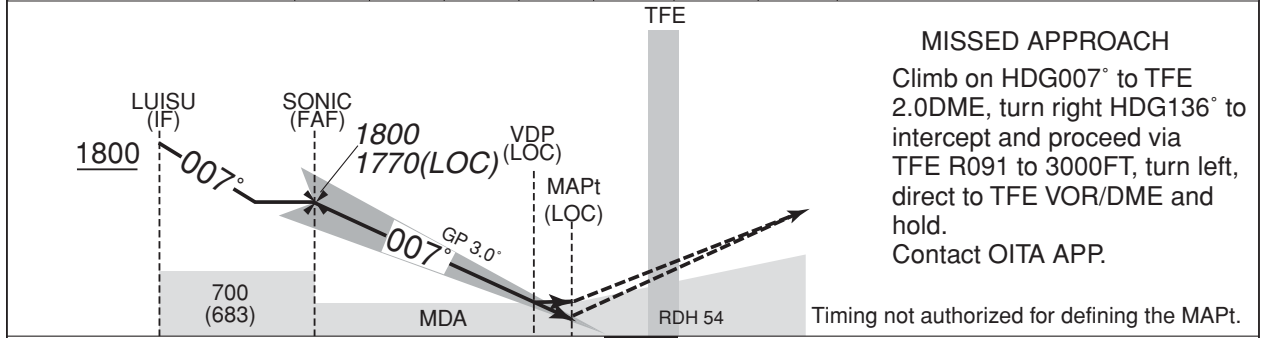
CHANGE : MDA(H), VDP

INSTRUMENT APPROACH CHART

RJFO / OITA ILS X or LOC X RWY01



NM to ITF	FAF	5	4	3	2	1	MAPt
ALT (3.0° APCH Path)	1770	1604	1286	968	649	330	-



**MISSED APPROACH**  
Climb on HDG007° to TFE 2.0DME, turn right HDG136° to intercept and proceed via TFE R091 to 3000FT, turn left, direct to TFE VOR/DME and hold.  
Contact OITA APP.

10.5	5.5	0.9	0.6	0.2	DME to ITF
10.4	5.4	0.7	0.5	0	NM to THR

Missed APCH climb gradient MNM 4.0%.

MINIMA		THR elev. 19		AD elev. 17		
CAT	CAT I		LOC		CIRCLING	
	DA(H)	RVR/CMV	MDA(H)	RVR/CMV	MDA(H)	VIS
A	219 (200)	550	300 (283)	800	430 (413)	1600
B					470 (453)	
C					690 (673)	
D					760 (743)	

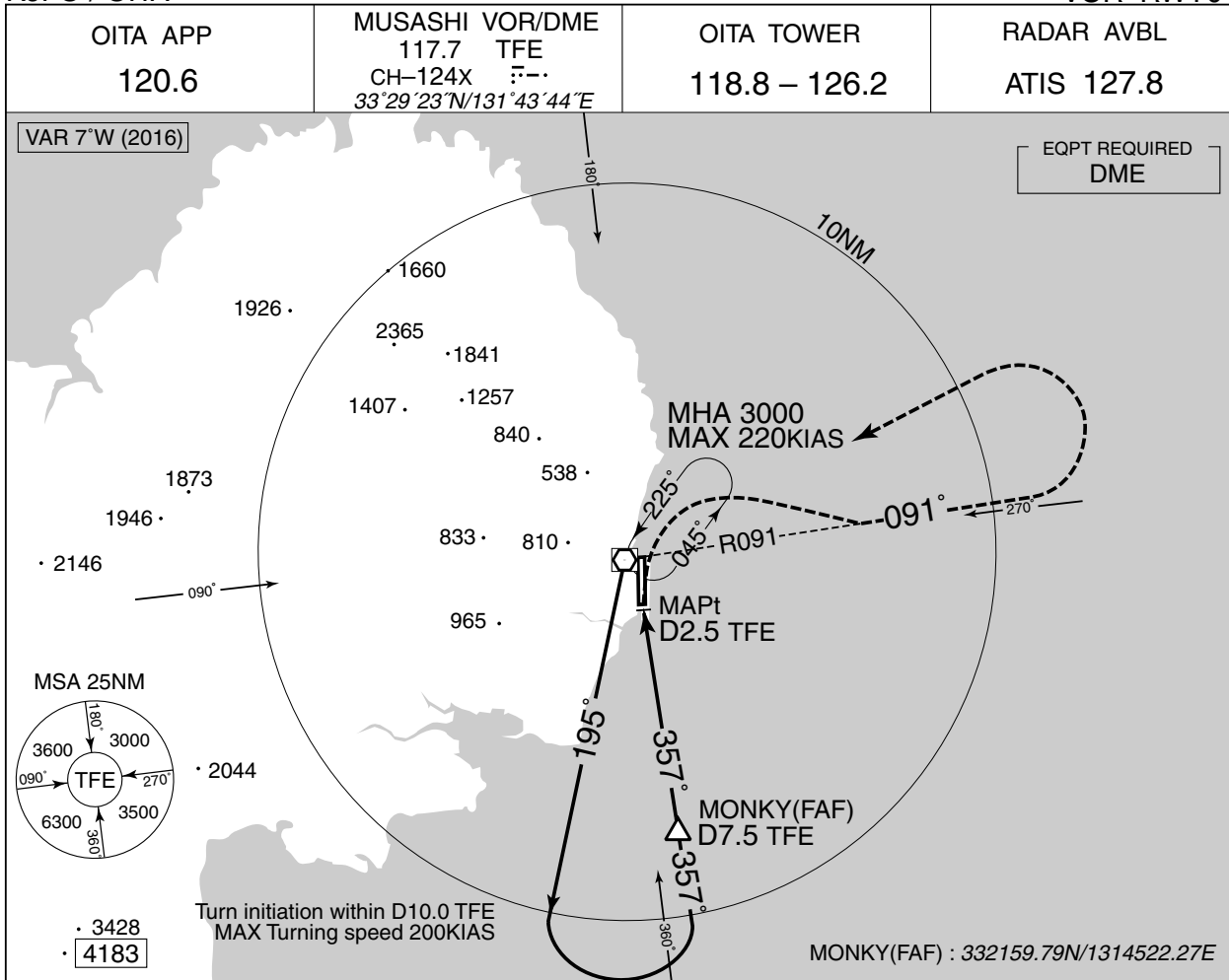
MINIMA with Missed APCH climb gradient of 2.5% are not established.  
Circling to EAST side of RWY only.

CHANGE : MDA(H), VDP

INSTRUMENT APPROACH CHART

RJFO / OITA

VOR RWY01



NM to TFE	FAF	7	6	5	4	3	MAPt
ALT (3.0° APCH Path)	1986	1825	1507	1189	871	552	-

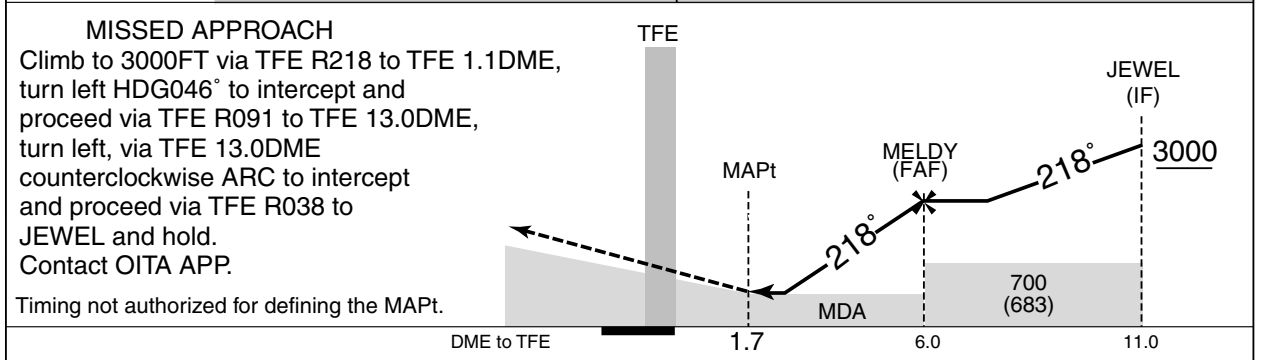
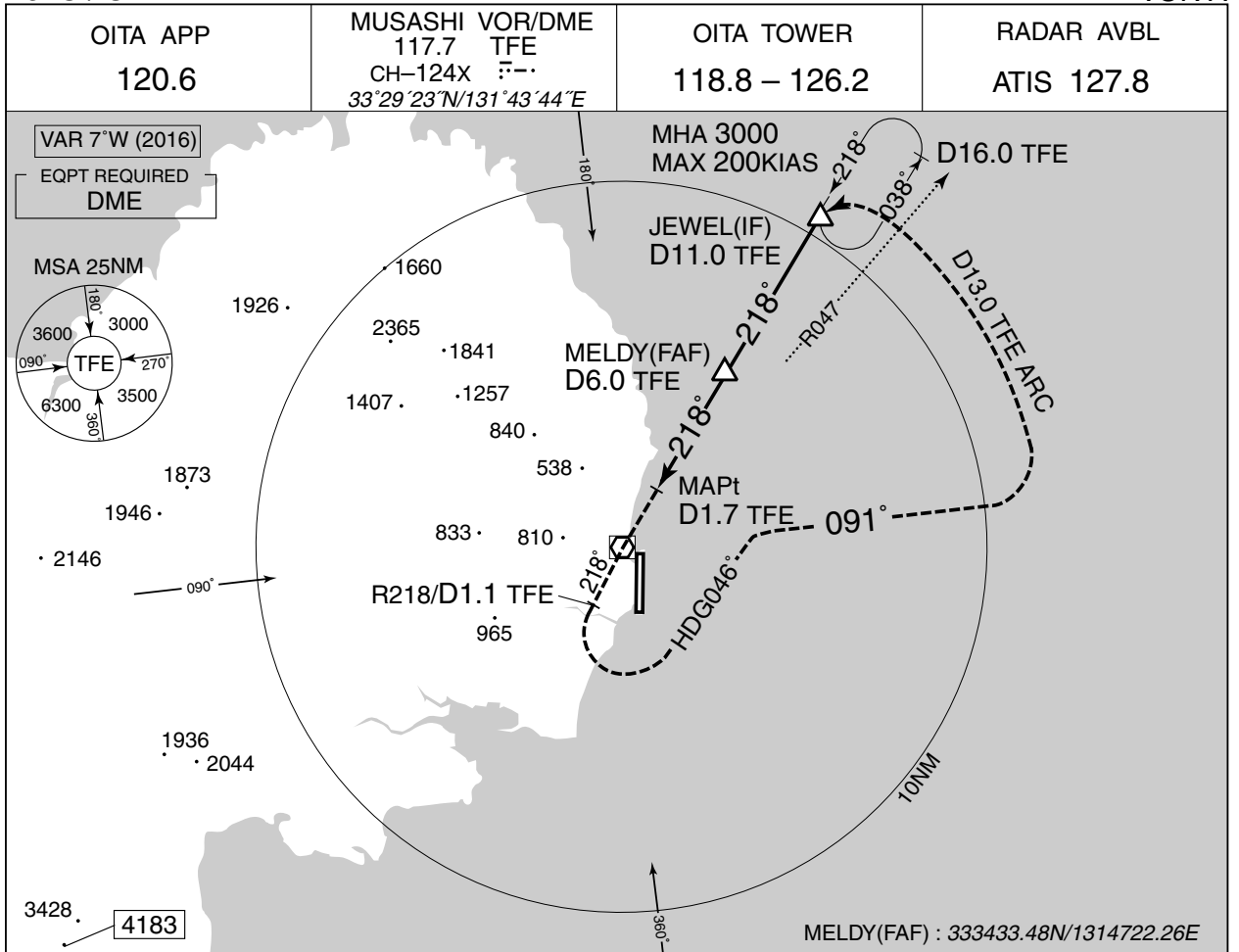
DME to TFE	NM to THR
7.5 6.0	2.9 2.5 1.5 1.4 1.0 0

MINIMA		THR elev. 19	AD elev. 17	
CAT	CIRCLING			
	MDA(H)	RVR/CMV	MDA(H) VIS	
A	500 (483)	1000	500 (483) 1600	
B		1200	690 (673) 2400	
C		1600	760 (743)	3200
D				

Circling to EAST side of RWY only.

INSTRUMENT APPROACH CHART

RJFO / OITA VOR A



Missed APCH climb gradient MNM 5.0%.

<b>MINIMA</b>		AD elev. 17
CAT	CIRCLING	
	MDA(H)	VIS
A	440 (423)	1600
B	480 (463)	
C	660 (643)	2400
D	760 (743)	3200

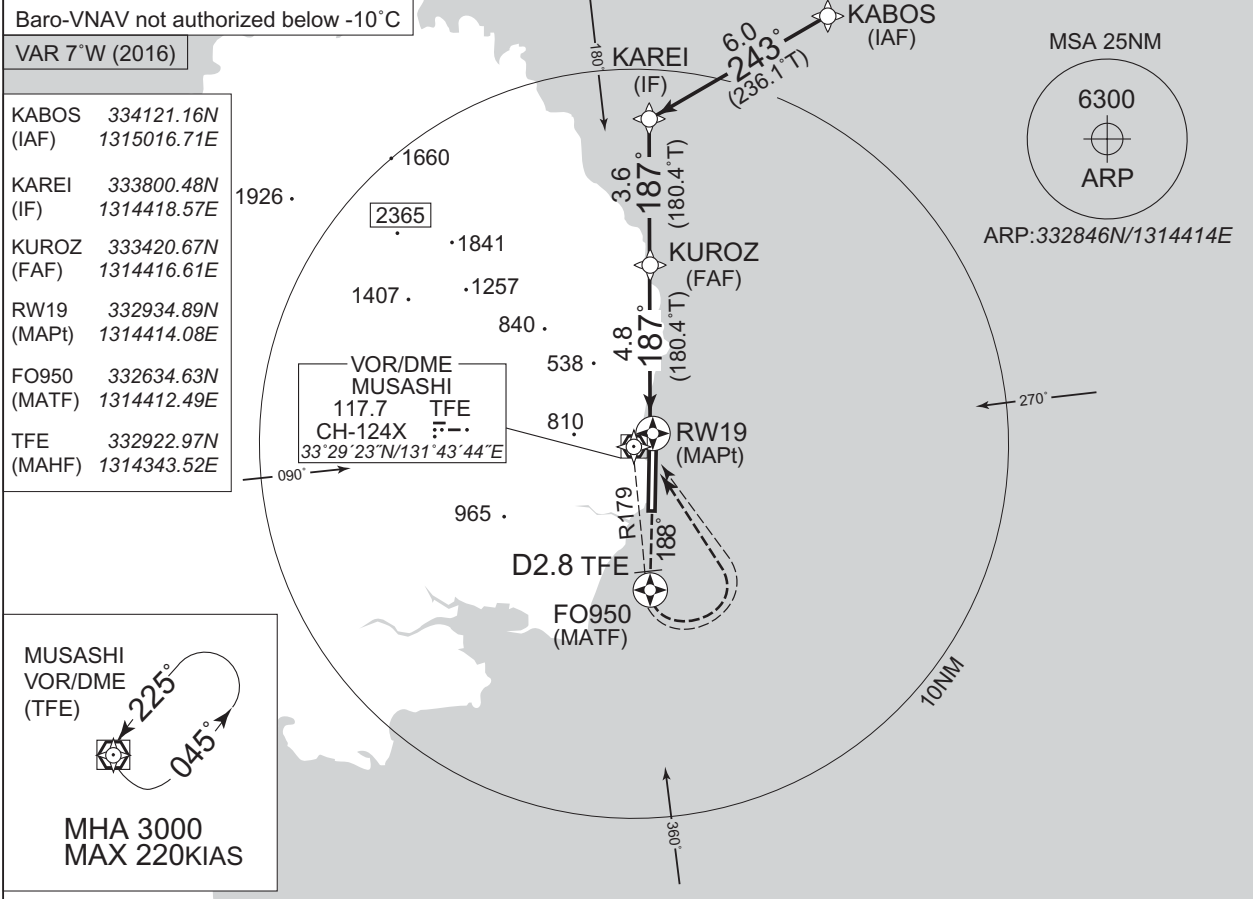
MINIMA with Missed APCH climb gradient of 2.5% are not established.  
Circling to EAST side of RWY only.

INSTRUMENT APPROACH CHART

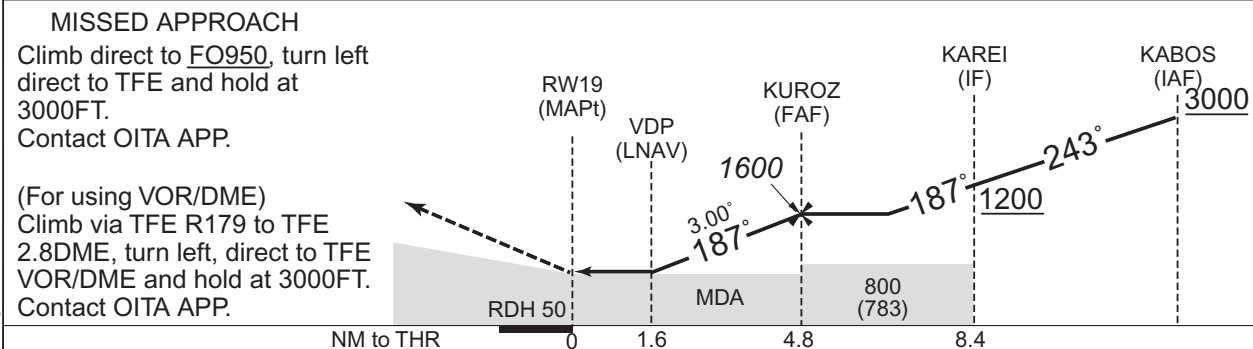
RJFO / OITA

RNP Z RWY19

OITA APP 120.6	RNP APCH	OITA TOWER 118.8 – 126.2	RADAR AVBL ATIS 127.8
-------------------	----------	-----------------------------	--------------------------



NM to Next Fix	MAPt	2	3	4	FAF
ALT (3.0° APCH Path)	-	703	1021	1340	1600



MINIMA	THR elev. 17	AD elev. 17
--------	--------------	-------------

CAT	LNAV/VNAV		LNAV		CIRCLING		
	DA(H)	CMV	MDA(H)	CMV	MDA(H)	VIS	
A	580 (563)	1400	580 (563)	1400	580 (563)	1600	
B		1500		1500			
C		1600		1600			690 (673)
D		1800		1800			760 (743)

Circling to EAST side of RWY only

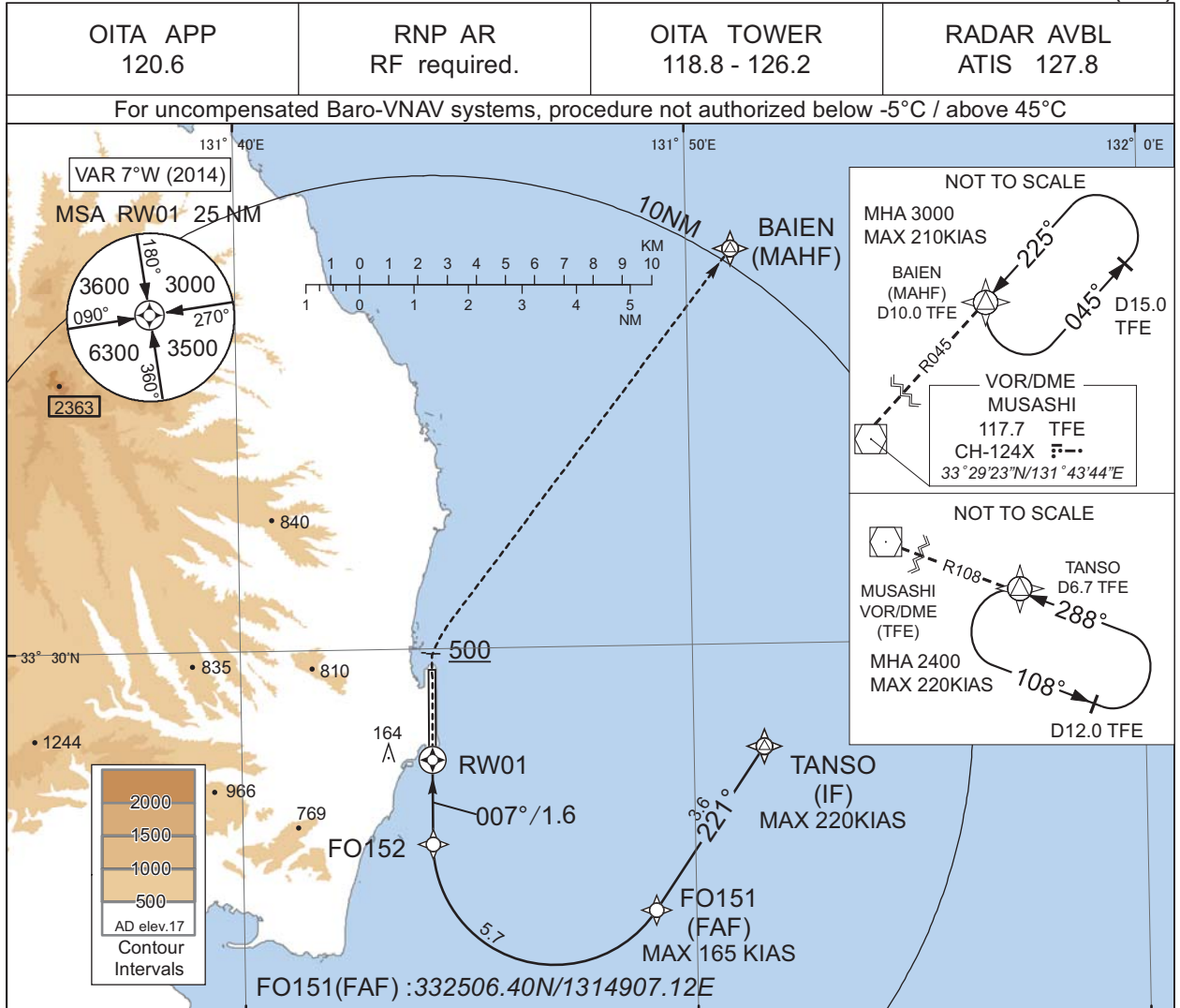
CHANGE:PROC renamed. Requirement for RNP.



INSTRUMENT APPROACH CHART

RJFO / OITA

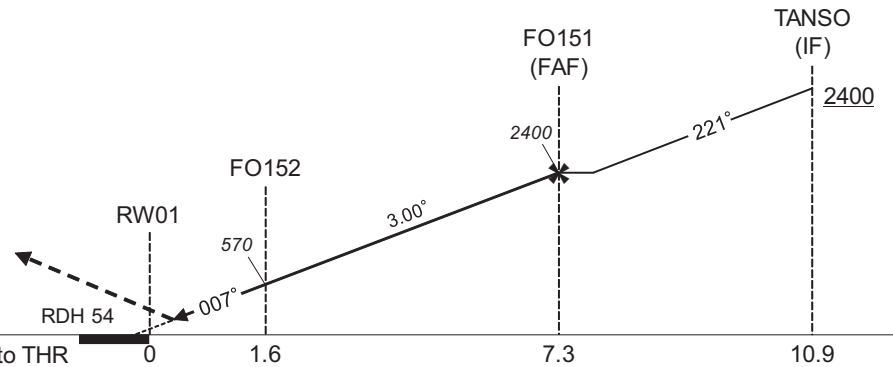
RNP RWY01(AR)



MISSED APPROACH

From RW01 on track 007°, at or above 500FT turn right, direct to BAIEN and hold at 3000FT. Contact OITA APP.

CHANGE : PROC renamed. Requirement for RNP:



Missed APCH climb gradient MNM 5.0%

CAT	RNP 0.30	
	MINIMA	THR elev. 19 AD elev. 17
A	DA(H)	RVR/CMV
B	-	-
C	326(307)	1000
D		1400

**Authorization Required**

MINIMA with Missed APCH climb gradient of 2.5% are not established.

INSTRUMENT APPROACH CHART

RJFO / OITA

RNP RWY01(AR)

Coding Table

Serial Number	Path Descriptor	Waypoint Identifier	Fly Over	Course °M(°T)	Magnetic Variation	Distance (NM)	Turn Direction	Altitude (FT)	Speed (KIAS)	VPA/ RDH (°/FT)	RNP Value
001	IF	TANSO	-	-	-7.0	-	-	+2400	-220	-	-
002	TF	FO151	-	221 (214.2)	-7.0	3.6	-	2400	-165	-	1.0
003	RF Center: FORF1 r=2.25NM	FO152	-	-	-7.0	5.7	R	570	-	-3.00	0.3
004	TF	RW01	Y	007 (000.4)	-7.0	1.6	-	73	-	-3.00/54	0.3
005	FA	-	-	007 (000.4)	-7.0	-	-	+500	-	-	1.0
006	DF	BAIEN	-	-	-7.0	-	R	3000	-	-	1.0

Waypoint Coordinates

Waypoint Identifier	Coordinates	RF Arc Center Identifier	Coordinates
TANSO	332806.56N / 1315133.74E	FORF1	332622.64N / 1314653.79E
FO151	332506.40N / 1314907.12E		
FO152	332623.67N / 1314412.39E		
RW01	332757.53N / 1314413.22E		
BAIEN	333720.39N / 1315059.77E		

CHANGE : PROC renamed.

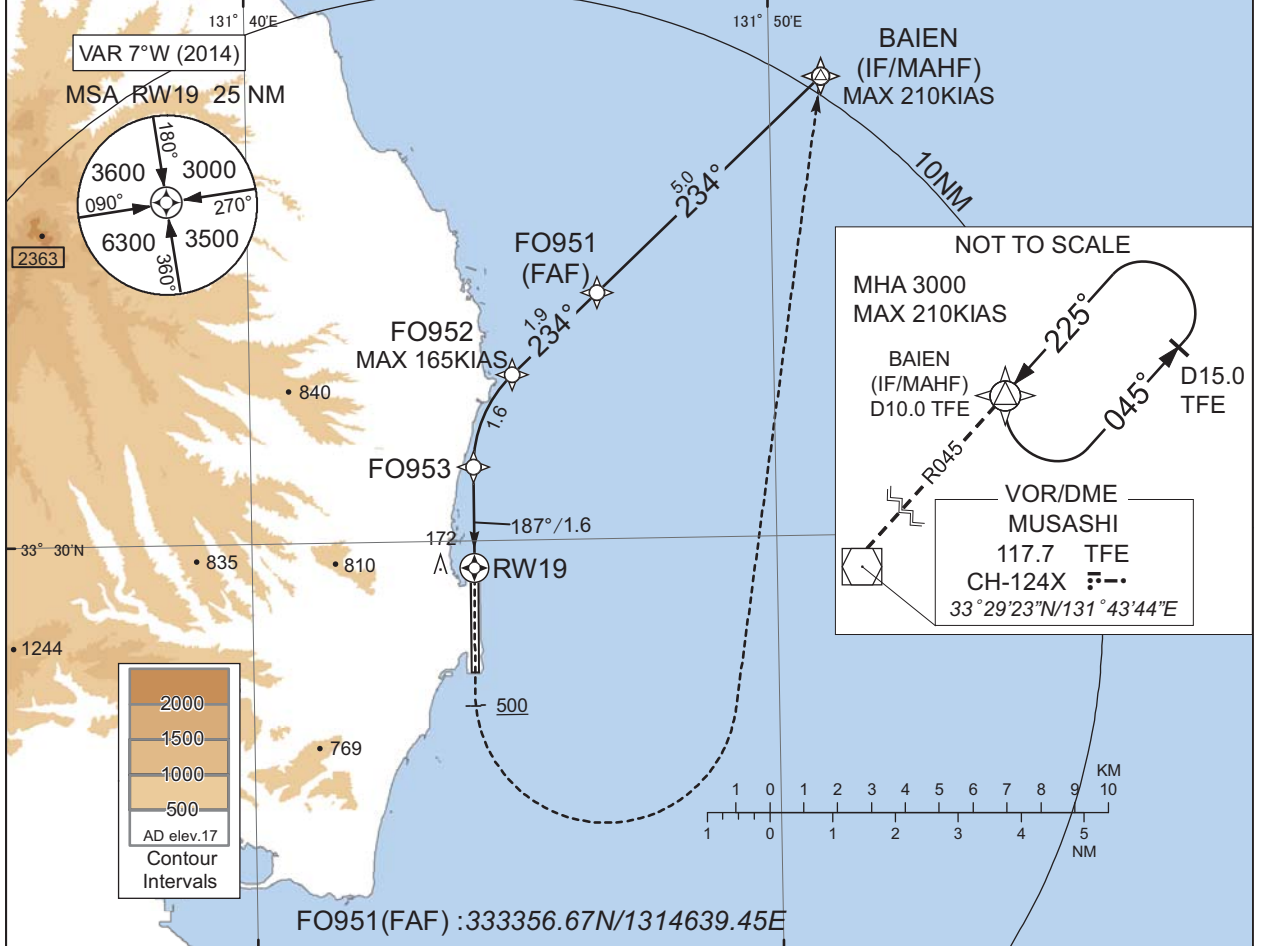
INSTRUMENT APPROACH CHART

RJFO / OITA

RNP Y RWY19(AR)

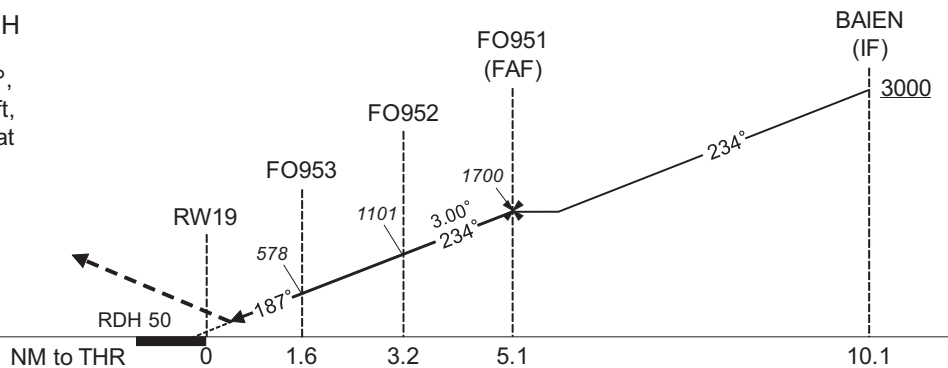
OITA APP 120.6	RNP AR RF required.	OITA TOWER 118.8 - 126.2	RADAR AVBL ATIS 127.8
-------------------	------------------------	-----------------------------	--------------------------

For uncompensated Baro-VNAV systems, procedure not authorized below -5°C / above 45°C



MISSED APPROACH

From RW19 on track 187°, at or above 500FT turn left, direct to BAIEN and hold at 3000FT.  
Contact OITA APP.



Missed APCH climb gradient MNM 5.0%

CAT	RNP 0.30	
	MINIMA	THR elev. 17 AD elev. 17
A	-	-
B	-	-
C	334(317)	1400
D	-	1600

**Authorization Required**

MINIMA with Missed APCH climb gradient of 2.5% are not established.

CHANGE : PROC renamed. Requirement for RNP.

INSTRUMENT APPROACH CHART

RJFO / OITA

RNP Y RWY19(AR)

Coding Table

Serial Number	Path Descriptor	Waypoint Identifier	Fly Over	Course °M(°T)	Magnetic Variation	Distance (NM)	Turn Direction	Altitude (FT)	Speed (KIAS)	VPA/ RDH (°/FT)	RNP Value
001	IF	BAIEN	-	-	-7.0	-	-	+3000	-210	-	-
002	TF	FO951	-	234 (226.8)	-7.0	5.0	-	1700	-	-	1.0
003	TF	FO952	-	234 (226.8)	-7.0	1.9	-	1101	-165	-3.00	0.3
004	RF Center: FORF2 r=2.02NM	FO953	-	-	-7.0	1.6	L	578	-	-3.00	0.3
005	TF	RW19	Y	187 (180.4)	-7.0	1.6	-	67	-	-3.00/50	0.3
006	FA	-	-	187 (180.4)	-7.0	-	-	+500	-	-	1.0
007	DF	BAIEN	-	-	-7.0	-	L	3000	-	-	1.0

Waypoint Coordinates

Waypoint Identifier	Coordinates	RF Arc Center Identifier	Coordinates
BAIEN	333720.39N / 1315059.77E	FORF2	333110.65N / 1314640.11E
FO951	333356.67N / 1314639.45E		
FO952	333239.42N / 1314500.88E		
FO953	333111.58N / 1314414.94E		
RW19	332934.89N / 1314414.08E		

CHANGE : PROC renamed.

RJFO / OITA

Visual REP



※図中に標高を示す数字がある場合、単位はメートル(m)である。The unit of measurement used to express elevation is meter(m).

CHANGE : Map updated. BRG/DIST from ARP.

Call sign	BRG / DIST from ARP	Remarks
姫島 Himeshima	346°T / 15.3NM	島 Island
ゴルフコース Golf course	345°T / 9.7NM	ゴルフ場 Golf course
行入ダム Gyonyu dam	321°T / 7.0NM	ダム Dam
イーストポイント East point	090°T / 10.0NM	海上 Over the sea
杵築 Kitsuki	232°T / 6.7NM	八坂川河口 River mouth (The Yasaka)
佐賀関 Saganoseki	152°T / 15.0NM	精錬所煙突 Chimney

RJFO / OITA

Minimum Vectoring Altitude CHART

