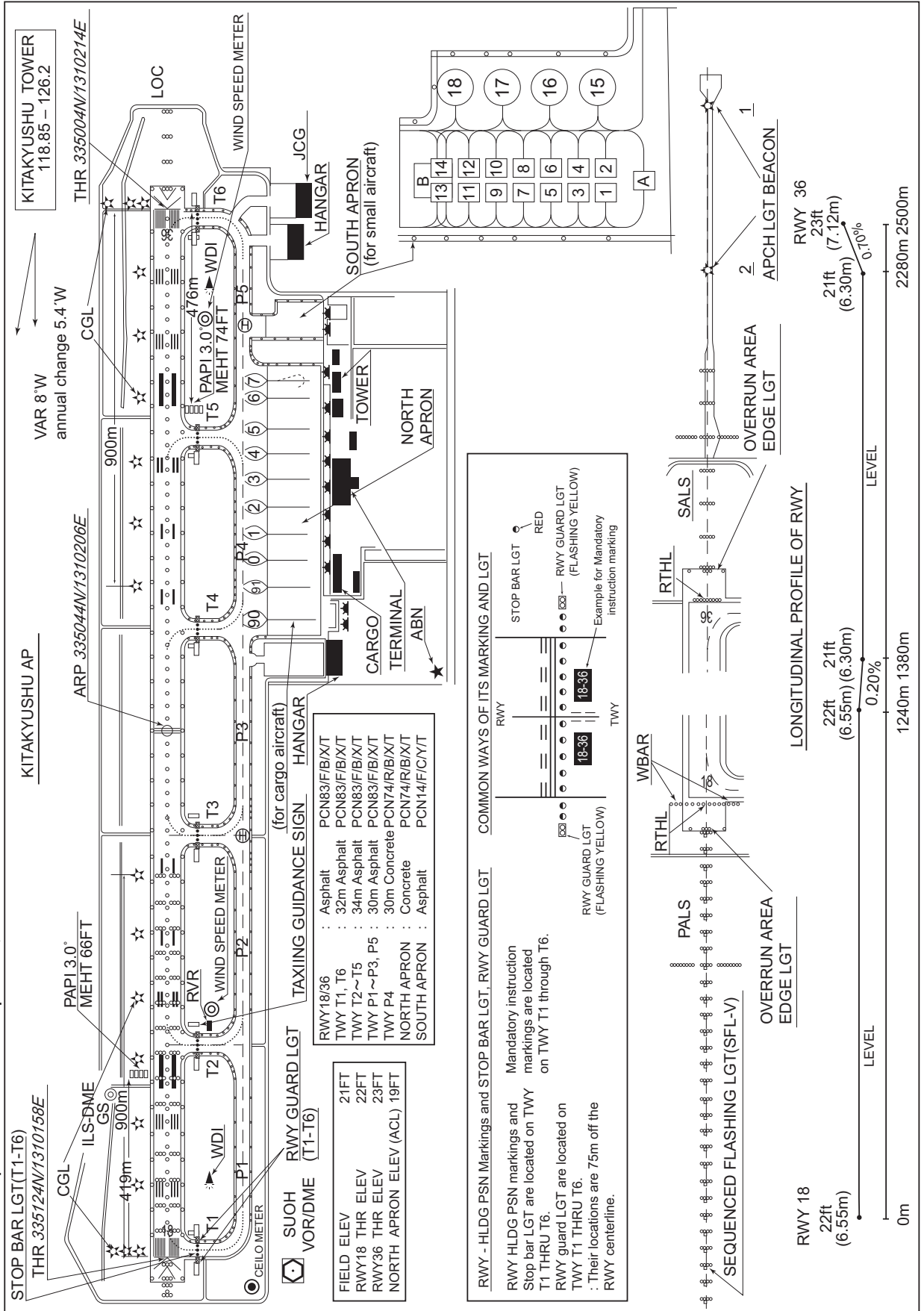


RJFR / KITAKYUSHU

AD CHART

CHANGE : Spot 91 installed. Spot 5A,5B abolished. HANGAR added.



STANDARD DEPARTURE CHART - INSTRUMENT

RJFR / KITAKYUSHU

SID

ASARI THREE DEPARTURE

RWY 18 : Climb RWY HDG to 500FT, turn left HDG039° ,...

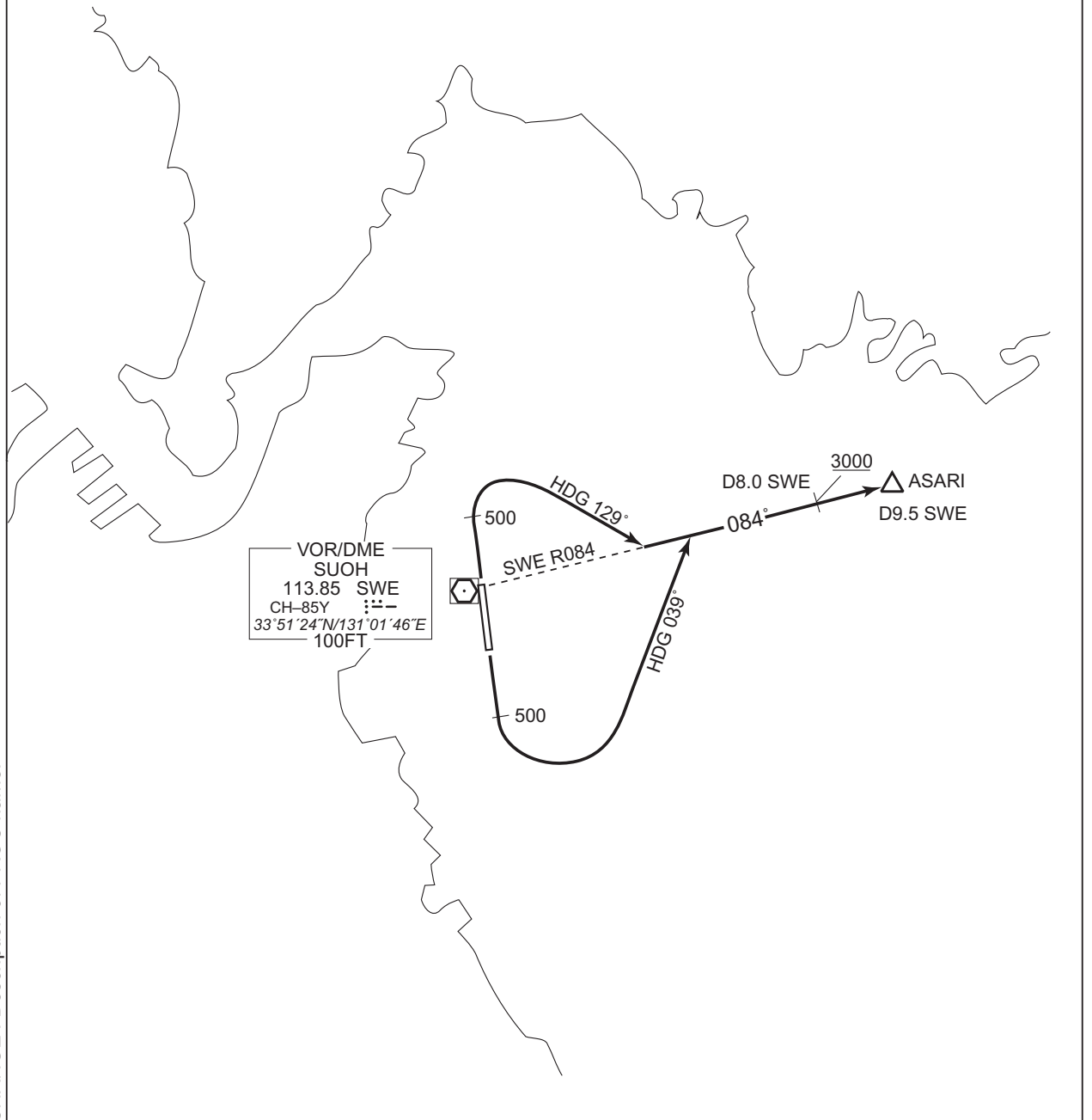
RWY 36 : Climb RWY HDG to 500FT, turn right HDG129° , ...

...to intercept and proceed via SWE R084 to ASARI.

Cross SWE 8.0DME at or above 3000FT.

Note RWY18 : 5.8% climb gradient required up to 500FT due to airspace restrictions only.

RWY36 : 4.0% climb gradient required up to 500FT due to airspace restrictions only.



CHANGE : Description of PROC name.

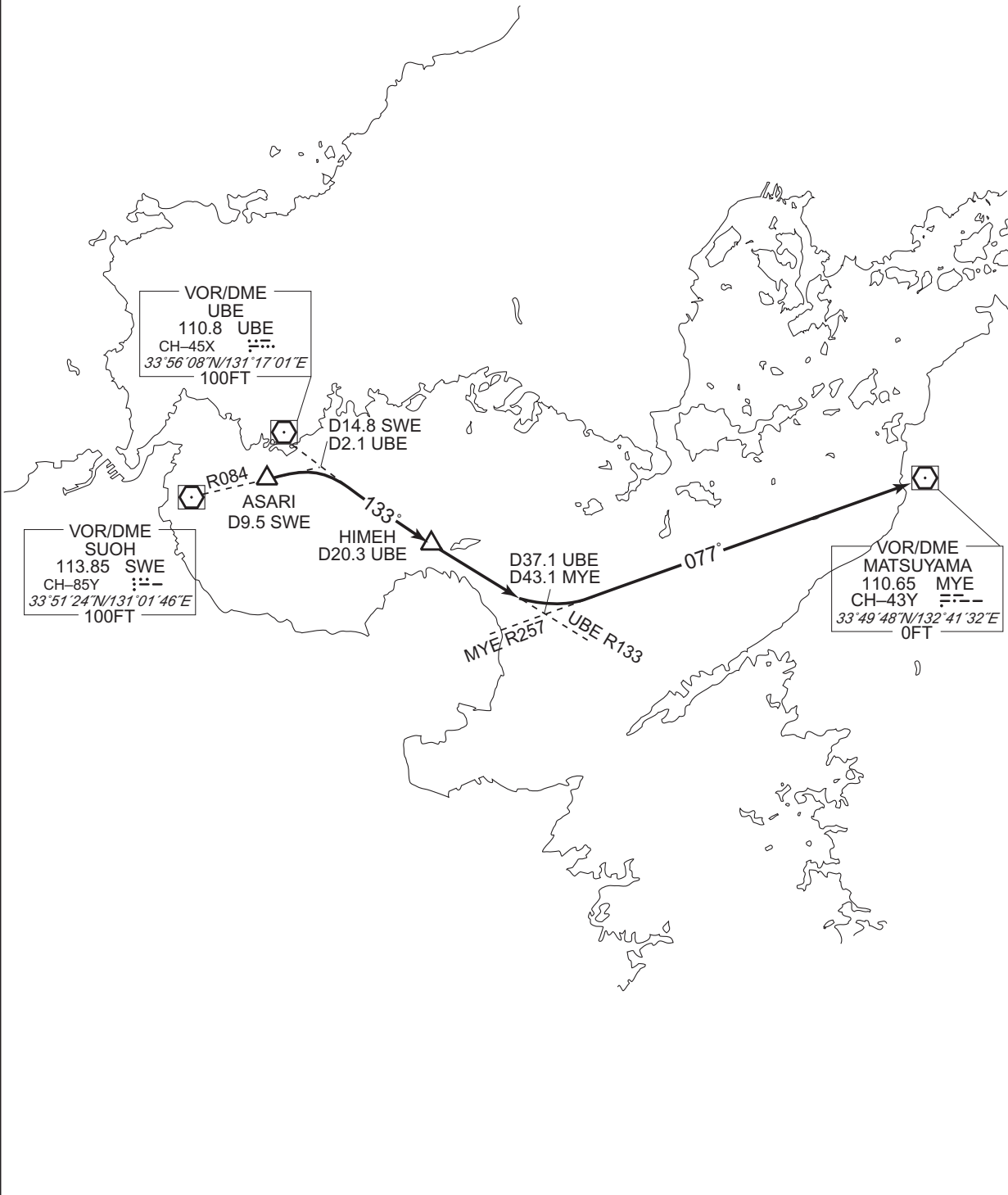
STANDARD DEPARTURE CHART - INSTRUMENT

RJFR / KITAKYUSHU

TRANSITION

MATSUYAMA TRANSITION

From over ASARI, via SWE R084 to intercept and proceed via UBE R133 to HIMEH, via UBE R133 to intercept and proceed via MYE R257 to MYE VOR/DME.



CHANGE : Description of PROC name.

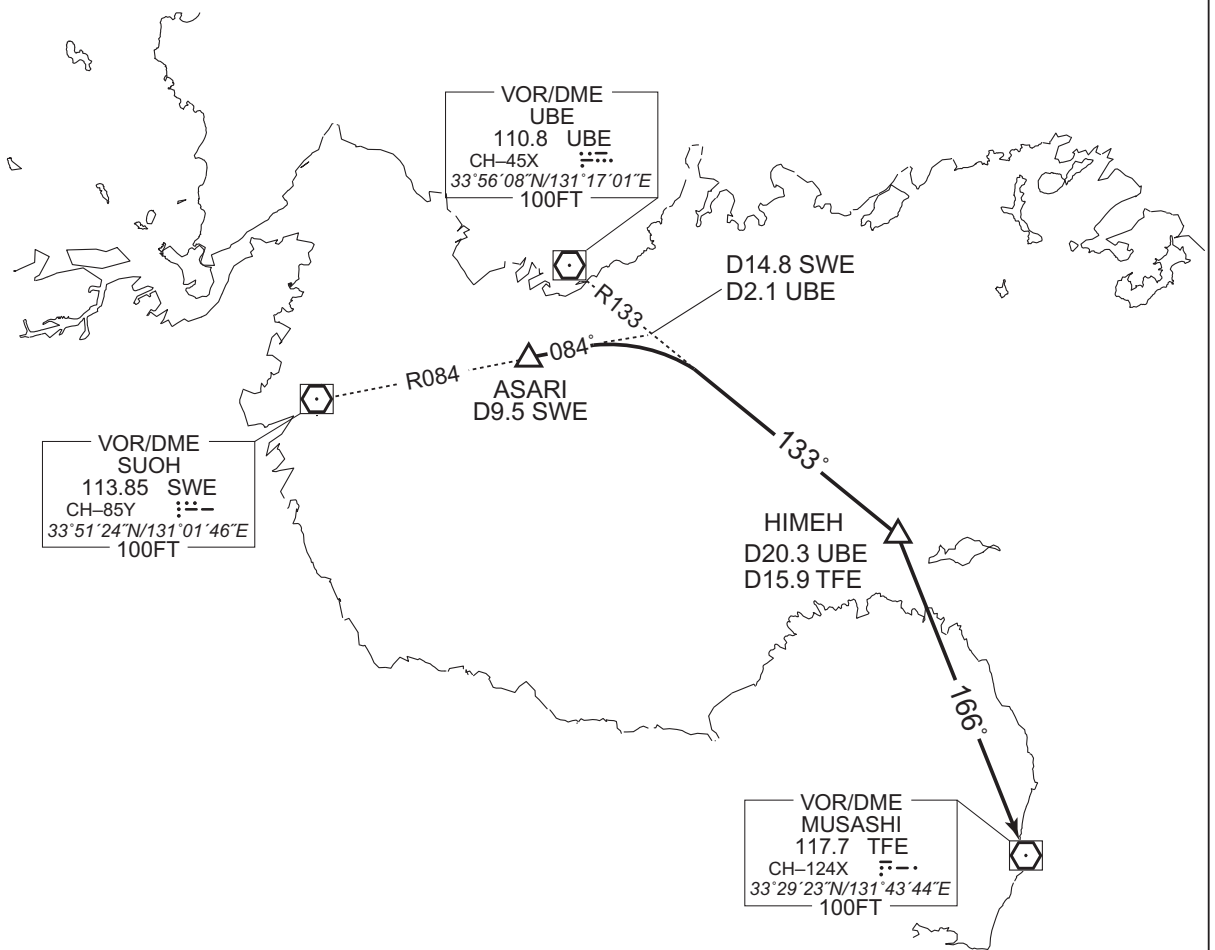
STANDARD DEPARTURE CHART - INSTRUMENT

RJFR / KITAKYUSHU

TRANSITION

MUSASHI TRANSITION

From over ASARI, via SWE R084 to intercept and proceed via UBE R133 to HIMEH, via TFE R346 to TFE VOR/DME.



CHANGE : Description of PROC name.

STANDARD DEPARTURE CHART - INSTRUMENT

RJFR / KITAKYUSHU

SID

ONGHA TWO DEPARTURE

RWY 18 : Climb RWY HDG to 500FT, turn left,...

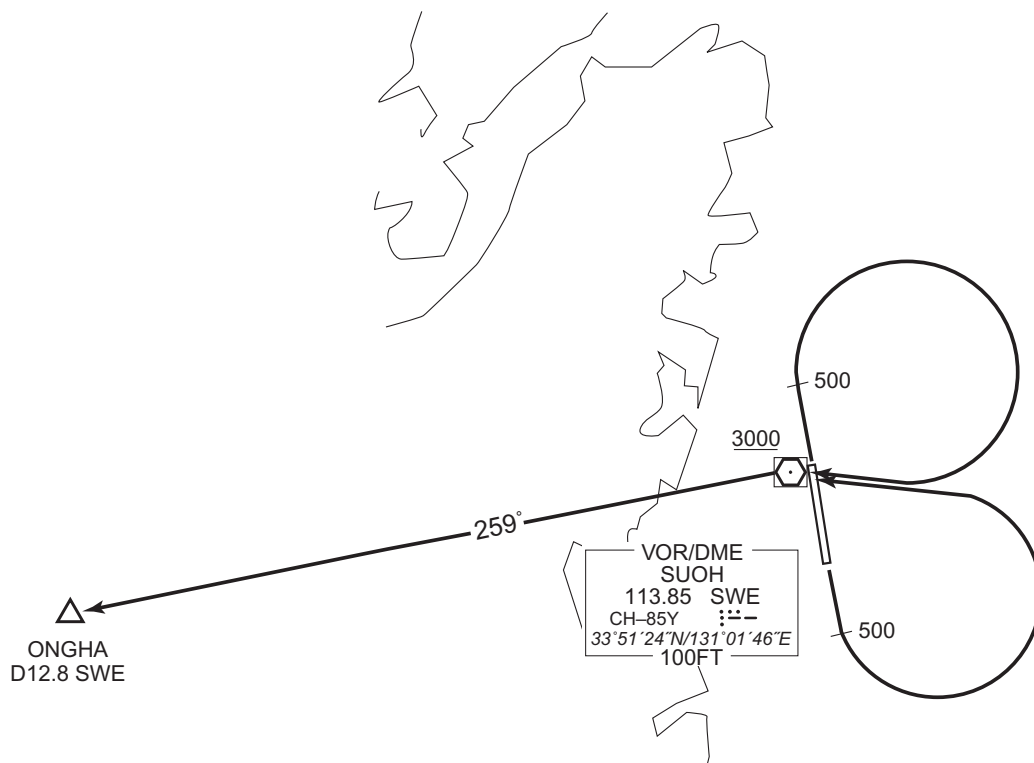
RWY 36 : Climb RWY HDG to 500FT, turn right,...

...direct to SWE VOR/DME, proceed via SWE R259 to ONGHA.

Cross SWE VOR/DME at or above 3000FT.

Note RWY18 : 5.8% climb gradient required up to 500FT due to airspace restrictions only.

RWY36 : 4.0% climb gradient required up to 500FT due to airspace restrictions only.



CHANGE : Description of PROC name.

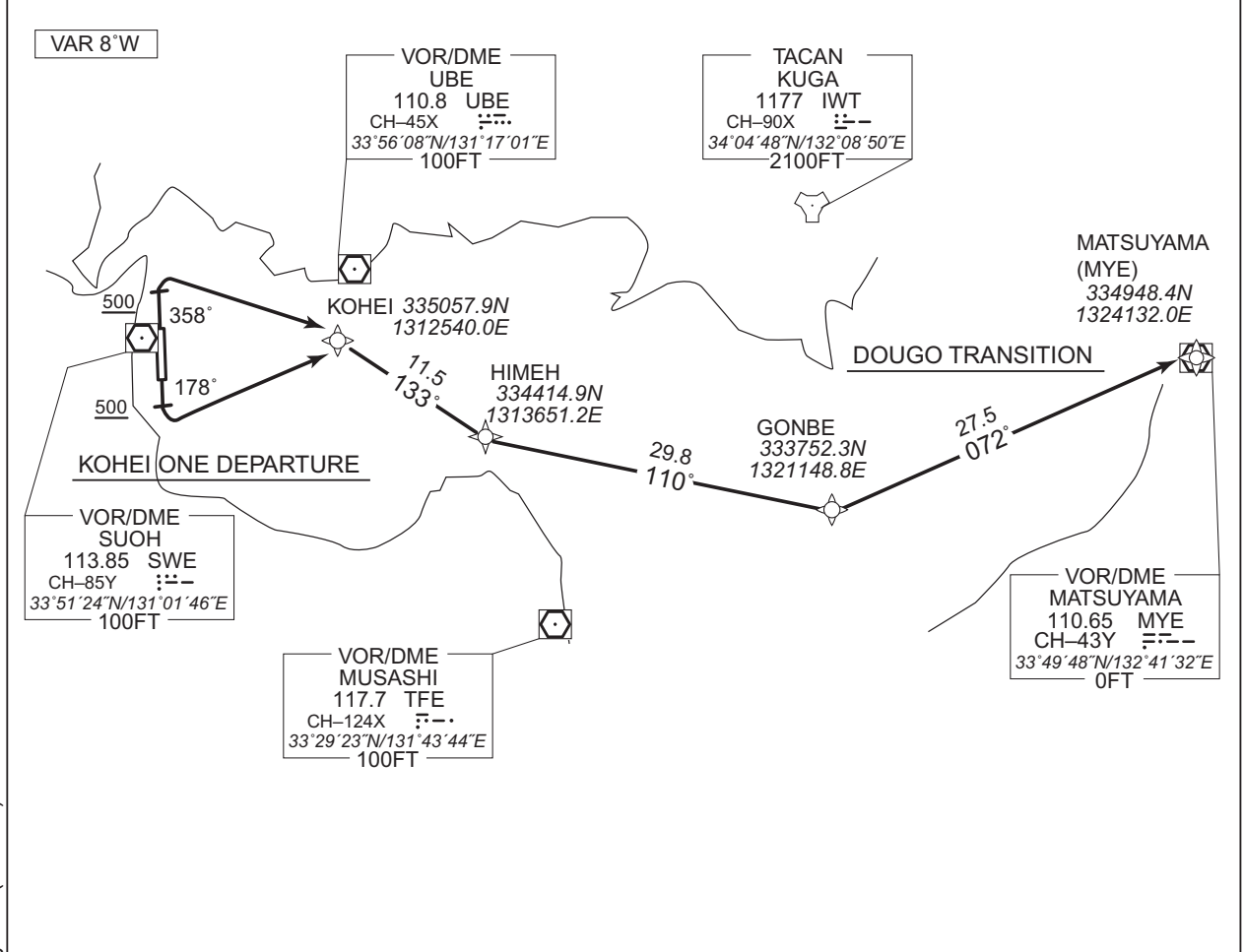
STANDARD DEPARTURE CHART-INSTRUMENT

RJFR / KITAKYUSHU

RNAV SID and TRANSITION

KOHEI ONE DEPARTURE DOUGO TRANSITION	RNAV1
---	--------------

Note 1) DME/DME/IRU or GNSS required. ※The aircraft equipped with only DME/DME/IRU must be able to update its position without delay at the starting point of take-off roll. 2) RADAR service required.	Critical DME	RWY18 : SWE : 2.0NM from DER - 12.0NM to KOHEI UBE : 16.0NM to KOHEI - KOHEI RWY36 : UBE : 12.0NM to KOHEI - KOHEI
	DME GAP	RWY18 : DER - 2.0NM from DER RWY36 : DER - 12.0NM to KOHEI
	Inappropriate Nav aids	See AD1.1.6.10.3. Inappropriate NAVAIDS for RNAV1



CHANGE : Description of VAR. FIX symbol(HIMEH).

<p>KOHEI ONE DEPARTURE</p> <p>RWY18 : Climb on HDG178° at or above 500FT, turn left direct to KOHEI.</p> <p>RWY36 : Climb on HDG358° at or above 500FT, turn right direct to KOHEI.</p> <p>Note RWY18: 5.8% climb gradient required up to 500FT due to airspace restrictions only. RWY36: 4.0% climb gradient required up to 500FT due to airspace restrictions only.</p>
--

<p>DOUGO TRANSITION</p> <p>From KOHEI, to HIMEH, to GONBE, to MYE.</p>

STANDARD DEPARTURE CHART-INSTRUMENT

RJFR / KITAKYUSHU

RNAV SID and TRANSITION

KOHEI ONE DEPARTURE

RWY18

Serial Number	Path Descriptor	Waypoint Identifier	Fly Over	Course °M(°T)	Magnetic Variation	Distance (NM)	Turn Direction	Altitude (FT)	Speed (KIAS)	Vertical Angle	Navigation Specification
001	VA	—	—	178 (170.4)	-7.5	—	—	+500	—	—	RNAV1
002	DF	KOHEI	—	—	-7.5	—	L	—	—	—	RNAV1

RWY36

Serial Number	Path Descriptor	Waypoint Identifier	Fly Over	Course °M(°T)	Magnetic Variation	Distance (NM)	Turn Direction	Altitude (FT)	Speed (KIAS)	Vertical Angle	Navigation Specification
001	VA	—	—	358 (350.4)	-7.5	—	—	+500	—	—	RNAV1
002	DF	KOHEI	—	—	-7.5	—	R	—	—	—	RNAV1

DOUGO TRANSITION

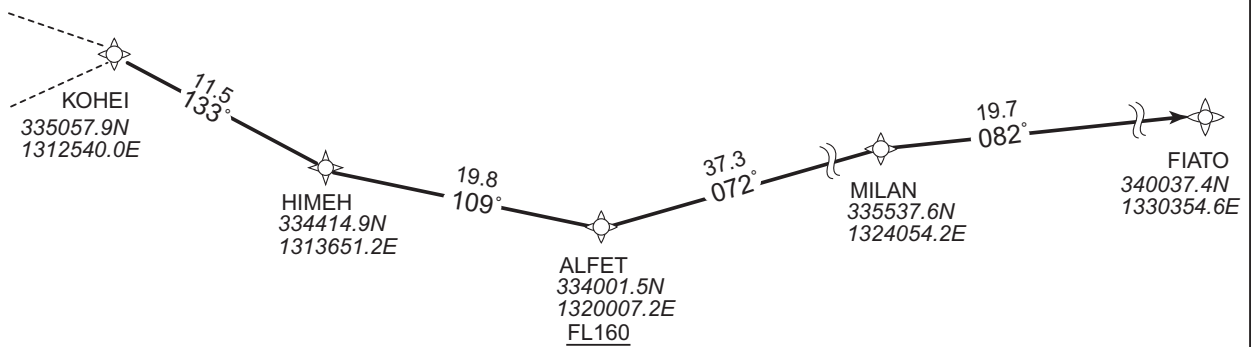
Serial Number	Path Descriptor	Waypoint Identifier	Fly Over	Course °M(°T)	Magnetic Variation	Distance (NM)	Turn Direction	Altitude (FT)	Speed (KIAS)	Vertical Angle	Navigation Specification
001	IF	KOHEI	—	—	-7.5	—	—	—	—	—	RNAV1
002	TF	HIMEH	—	133 (125.8)	-7.5	11.5	—	—	—	—	RNAV1
003	TF	GONBE	—	110 (102.2)	-7.5	29.8	—	—	—	—	RNAV1
004	TF	MYE	—	072 (064.1)	-7.5	27.5	—	—	—	—	RNAV1

STANDARD DEPARTURE CHART-INSTRUMENT

RJFR / KITAKYUSHU RNAV TRANSITION

FIATO TRANSITION		RNAV1
Note 1) DME/DME/IRU or GNSS required. 2) RADAR service required.	Critical DME	-
	DME GAP	-
	Inappropriate Nav aids	See AD1.1.6.10.3. Inappropriate NAVAIDs for RNAV1

VAR 8°W



From KOHEI, to HIMEH, to ALFET at or above FL160, to MILAN, to FIATO.

CHANGE : Description of VAR and PROC name. FIX symbol(HIMEH).

Serial Number	Path Descriptor	Waypoint Identifier	Fly Over	Course °M(°T)	Magnetic Variation	Distance (NM)	Turn Direction	Altitude (FT)	Speed (KIAS)	Vertical Angle	Navigation Specification
001	IF	KOHEI	-	-	-7.5	-	-	-	-	-	RNAV1
002	TF	HIMEH	-	133 (125.8)	-7.5	11.5	-	-	-	-	RNAV1
003	TF	ALFET	-	109 (102.2)	-7.5	19.8	-	+FL160	-	-	RNAV1
004	TF	MILAN	-	072 (065.1)	-7.5	37.3	-	-	-	-	RNAV1
005	TF	FIATO	-	082 (075.2)	-7.5	19.7	-	-	-	-	RNAV1

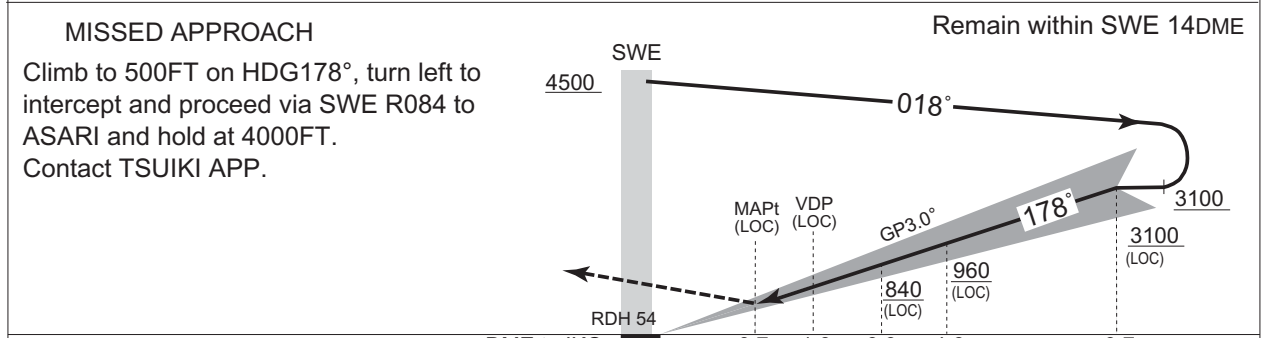
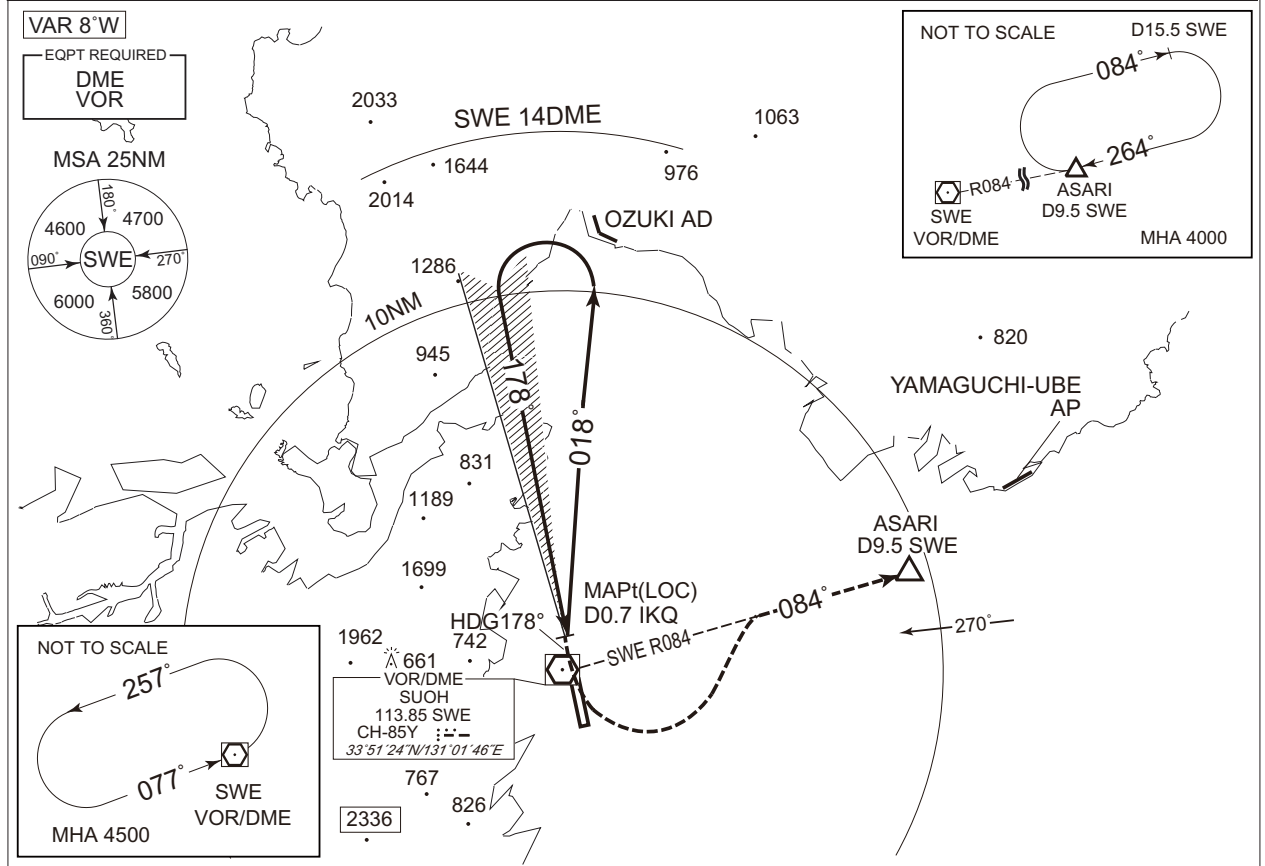
INTENTIONALLY LEFT BLANK

INSTRUMENT APPROACH CHART

RJFR / KITAKYUSHU

ILS Z or LOC Z RWY 18

TSUIKI APP 119.225 – 315.9	ILS – LOC 109.15 IKQ ILS-GP 331.25 ILS-DME CH-28Y	KITAKYUSHU TOWER 118.85 - 126.2	1315 – 2245(UTC) KITAKYUSHU RADIO 118.85 AFIS provided by Fukuoka Airport Office	RADAR AVBL CALL TSUIKI APP
-------------------------------	--	------------------------------------	--	----------------------------------



DME to IKQ: 0.7 1.6 3.3 4.6 9.7

MINIMA		THR elev. 22		AD elev. 21		
CAT	CAT I		LOC		CIRCLING	
	DA(H)	RVR/CMV	MDA(H)	RVR/CMV	MDA(H)	VIS
A	222 (200)	550	500 (479)	1000	500 (479)	1600
B				1200		
C				1600		
D				1600		

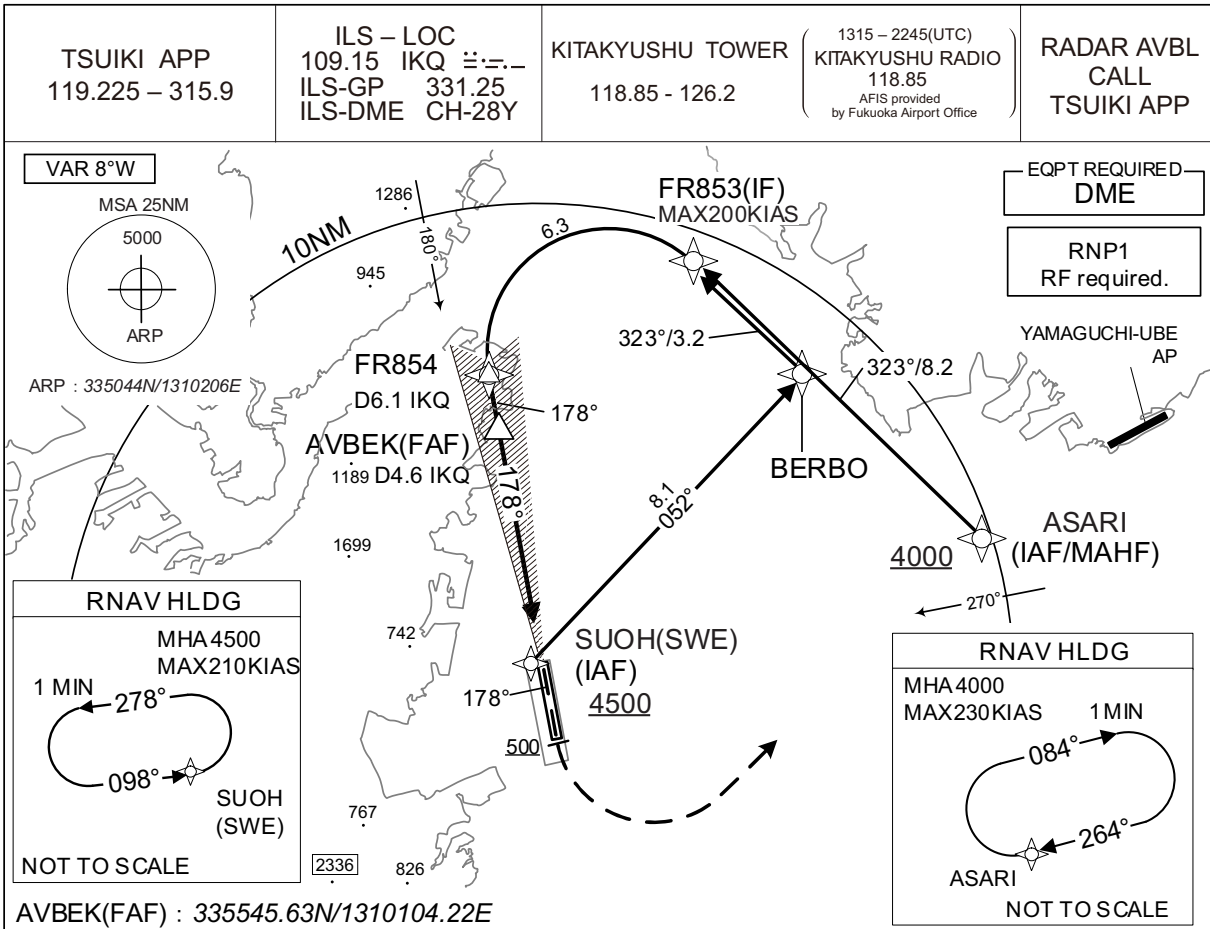
CHANGE : MAPt established.

Circling to East side of RWY only.

INSTRUMENT APPROACH CHART

RJFR / KITAKYUSHU

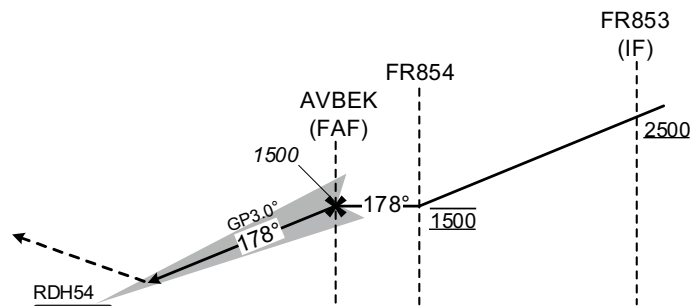
ILS Y RWY18



CHANGE : Navigation Specification(Basic RNP1 → RNP1).

MISSED APPROACH

Climb on course 178°, at or above 500FT turn left, direct to ASARI and hold at 4000FT. Contact TSUIKI APP.



DME to IKQ	0.2	4.6	6.1
NM to THR	0	4.4	5.9

Missed APCH climb gradient MNM 5.0%

MINIMA		THR elev. 22	AD elev. 21	
CAT	CAT I		CIRCLING	
	DA(H)	RVR/CMV	MDA(H)	VIS
A	222(200)	550	500(479)	1600
B				2400
C			580(559)	3200
D				

Circling to EAST side of RWY only.
MINIMA with Missed APCH climb gradient of 2.5% are not established.

INSTRUMENT APPROACH CHART

RJFR / KITAKYUSHU

ILS Y RWY18

Coding Table

Serial Number	Path Descriptor	Waypoint Identifier	Fly Over	Course °M(°T)	Magnetic Variation	Distance (NM)	Turn Direction	Altitude (FT)	Speed (KIAS)	Vertical Angle	Navigation Specification
001	IF	ASARI	-	-	-8.0	-	-	+4000	-	-	RNP1
002	TF	FR853	-	323 (314.8)	-8.0	8.2	-	+2500	-200	-	RNP1
001	IF	SWE	-	-	-8.0	-	-	+4500	-	-	RNP1
002	TF	BERBO	-	052 (044.5)	-8.0	8.1	-	-	-	-	RNP1
003	TF	FR853	-	323 (314.8)	-8.0	3.2	-	+2500	-200	-	RNP1
001	IF	FR853	-	-	-8.0	-	-	+2500	-200	-	RNP1
002	RF Center: FRRF3 r=2.50NM	FR854	-	-	-8.0	6.3	L	1500	-	-	RNP1
001	CA	-	-	178 (170.4)	-8.0	-	-	+500	-	-	RNP1
002	DF	ASARI	-	-	-8.0	-	L	4000	-	-	RNP1

Path	Waypoint Identifier	Inbound Course °M(°T)	Magnetic Variation	Outbound Time (MIN)	Turn Direction	Minimum Altitude (FT)	Maximum Altitude (FT)	Speed (KIAS)	Navigation Specification
Hold	ASARI	264 (256.4)	-8.0	1.0 (-14000)	R	4000	FL140	-230 (-14000)	RNP1
Hold	SWE	098 (090.0)	-8.0	1.0 (-14000)	L	4500	FL140	-210 (-14000)	RNP1

Waypoint Coordinates

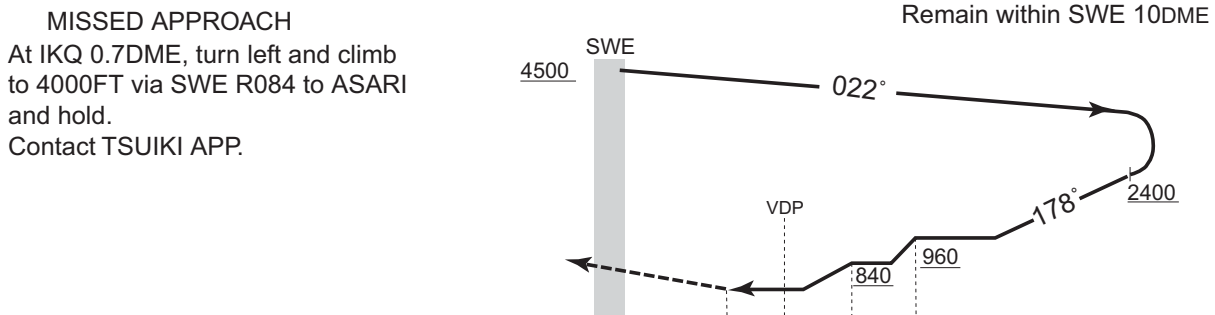
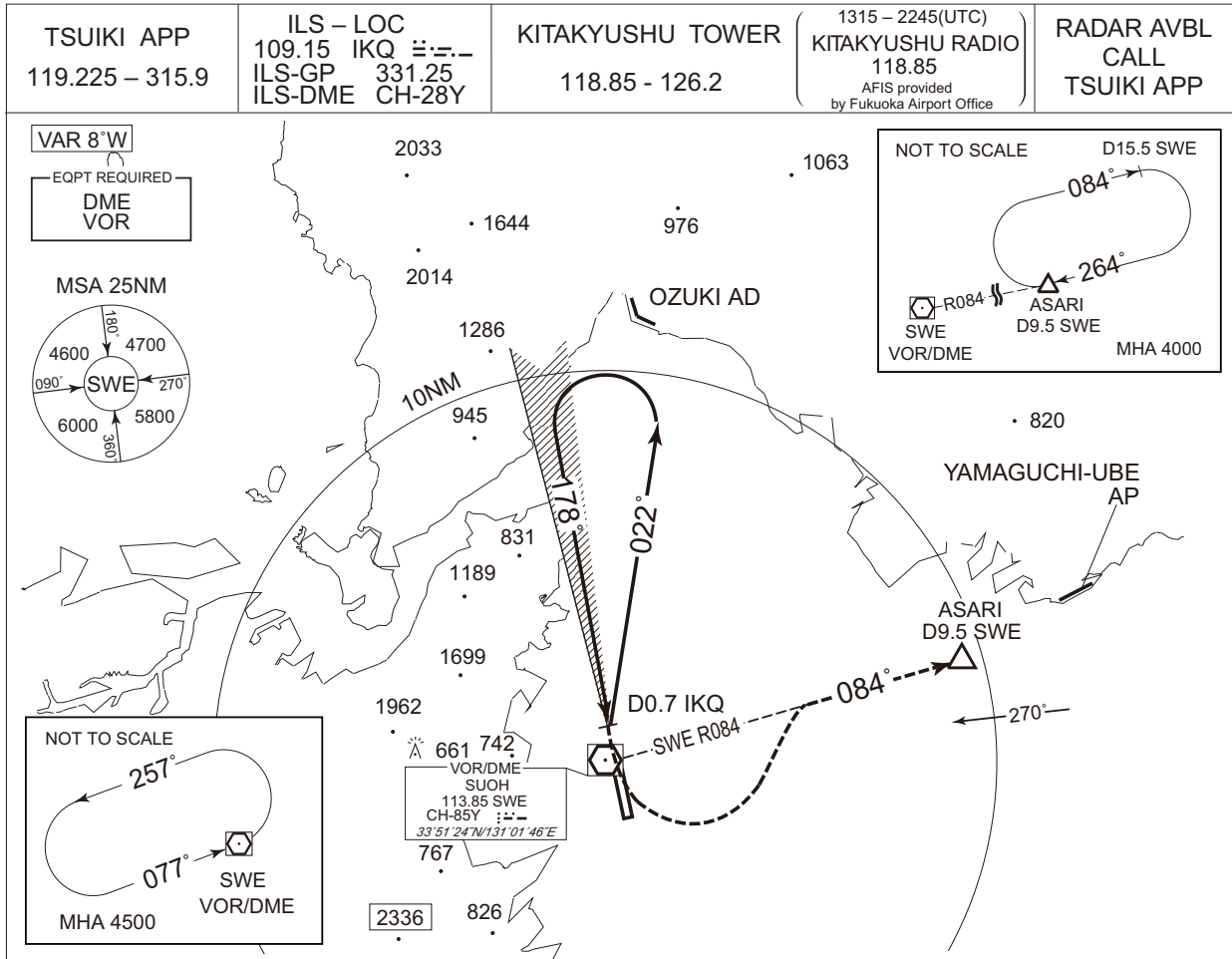
Waypoint Identifier	Coordinates	RF Arc Center Identifier	Coordinates
ASARI	335338.98N / 1311252.32E	FRRF3	335739.78N / 1310343.74E
BERBO	335710.25N / 1310836.17E		
FR853	335926.70N / 1310550.48E		
FR854	335714.50N / 1310045.99E		
SUOH(SWE)	335123.82N / 1310145.84E		

CHANGE : Navigation Specification(Basic RNP1 → RNP1).

INSTRUMENT APPROACH CHART

RJFR / KITAKYUSHU

LOC Y RWY 18



CHANGE : Description of HLDG.

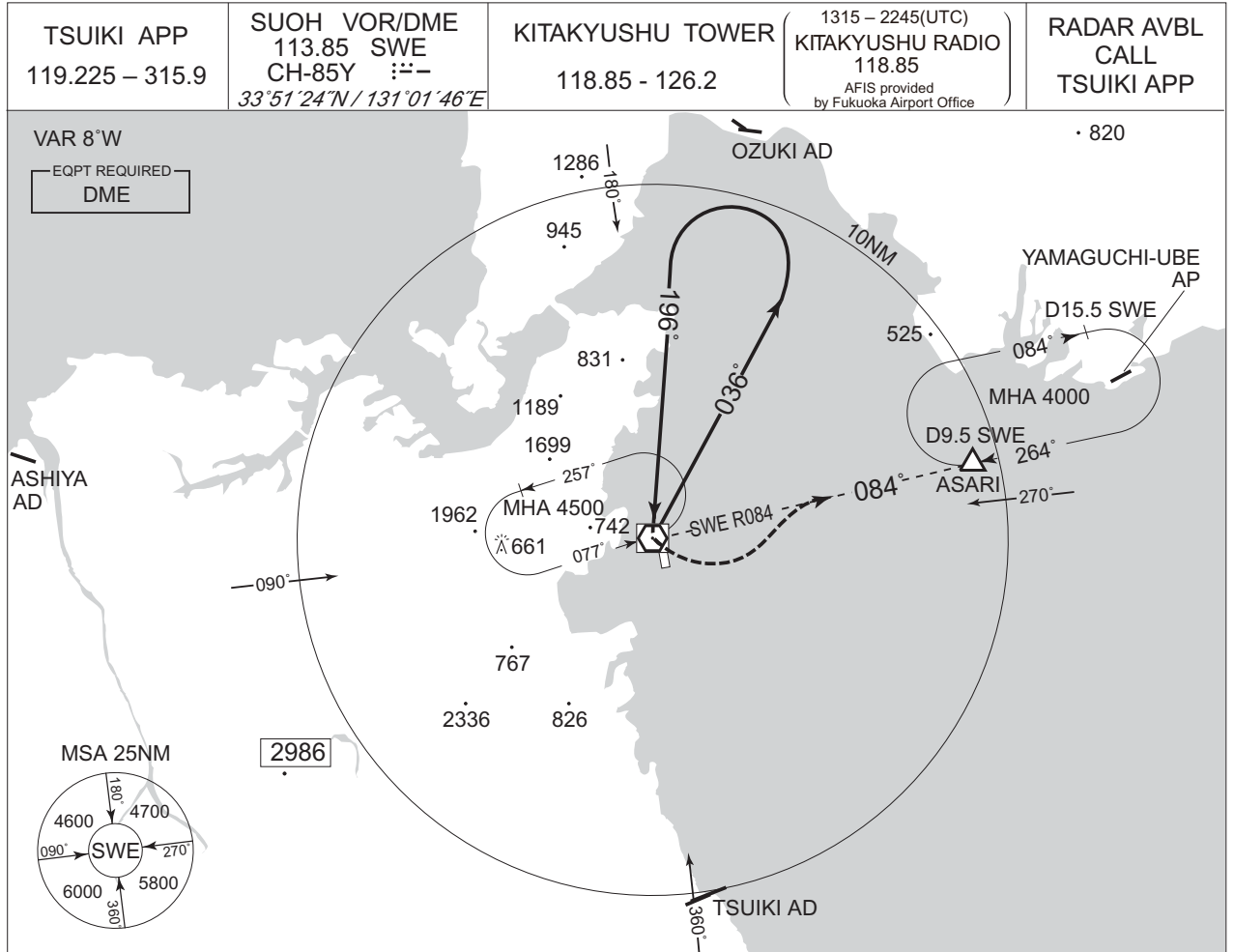
CAT	MINIMA		THR elev. 22	AD elev. 21
	MDA(H)	RVR/CMV	CIRCLING	
A	500 (479)	1000	500 (479)	1600
B		1200		580 (559)
C			1600	
D				

Circling to East side of RWY only.

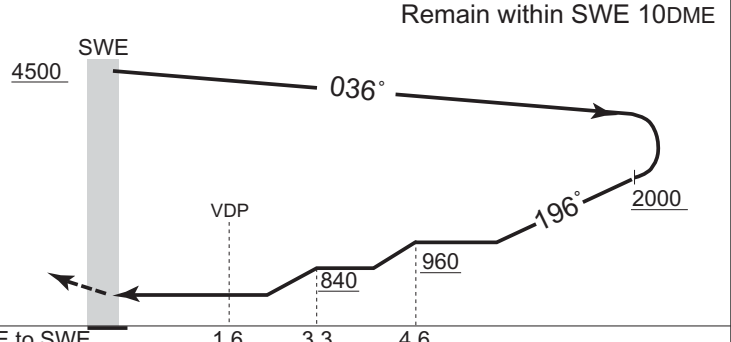
INSTRUMENT APPROACH CHART

RJFR / KITAKYUSHU

VOR RWY 18



MISSED APPROACH
At SWE VOR/DME, turn left and climb to 4000FT via SWE R084 to ASARI and hold. Contact TSUIKI APP.



MINIMA		THR elev. 22	AD elev. 21			
CAT	CIRCLING		MDA(H)	VIS		
	MDA(H)	RVR/CMV				
A	500 (479)	1000	500 (479)	1600		
B		1200		580 (559)	2400	
C					1600	3200
D						

CHANGE : Description of VAR.

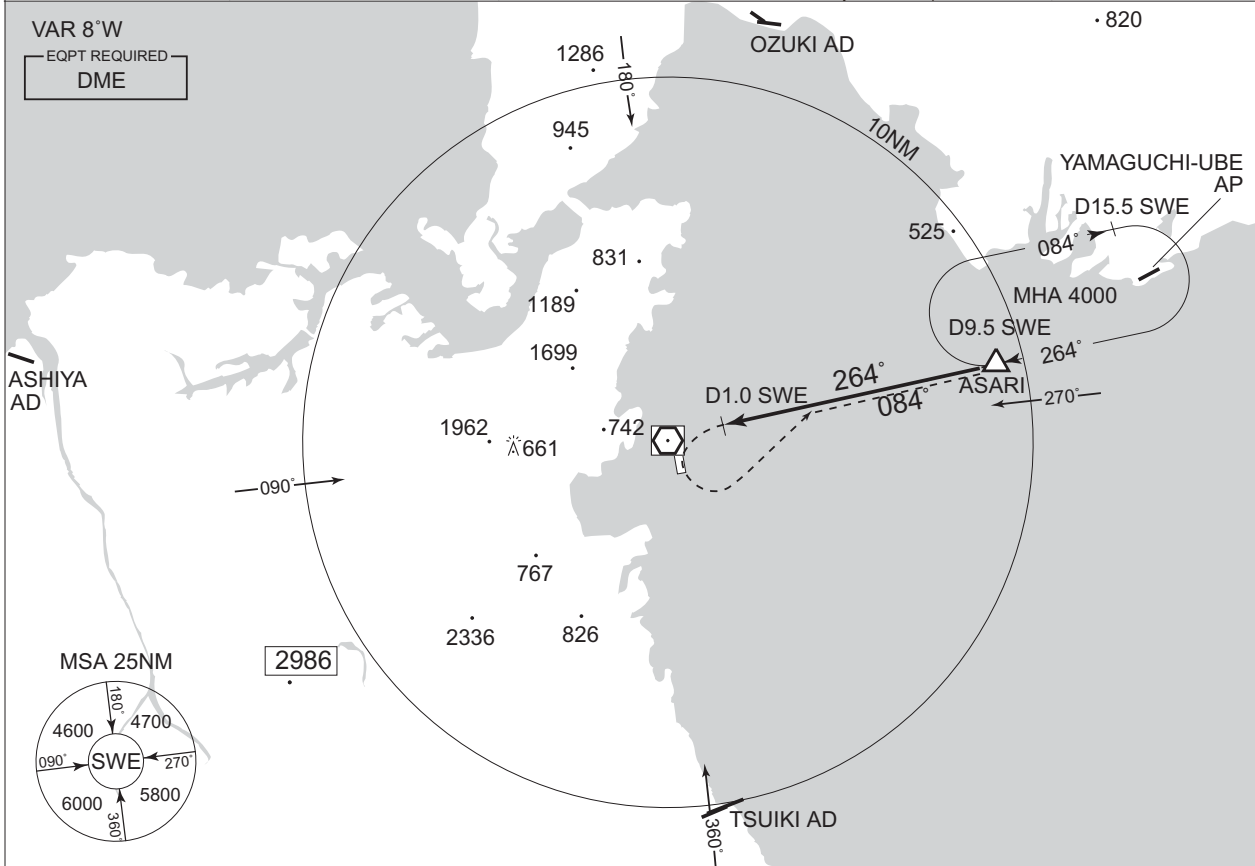
Circling to East side of RWY only.

INSTRUMENT APPROACH CHART

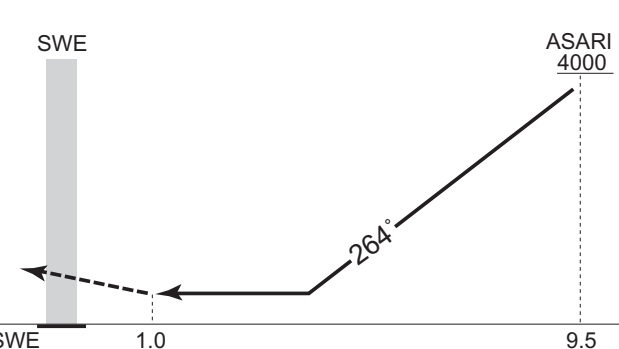
RJFR / KITAKYUSHU

VOR A

TSUIKI APP 119.225 – 315.9	SUOH VOR/DME 113.85 SWE CH-85Y $\text{---}\text{---}$ 33°51'24"N / 131°01'46"E	KITAKYUSHU TOWER 118.85 - 126.2 <small>1315 – 2245(UTC) KITAKYUSHU RADIO 118.85 AFIS provided by Fukuoka Airport Office</small>	RADAR AVBL CALL TSUIKI APP · 820
-------------------------------	---	---	---



MISSED APPROACH
At 1.0DME prior to SWE VOR/DME,
turn left and climb to 4000FT via
SWE R084 to ASARI and hold.
Contact TSUIKI APP.



MINIMA		AD elev. 21
CAT	CIRCLING	
	MDA(H)	VIS
A	1000 (979)	1600
B		2400
C		3200
D		

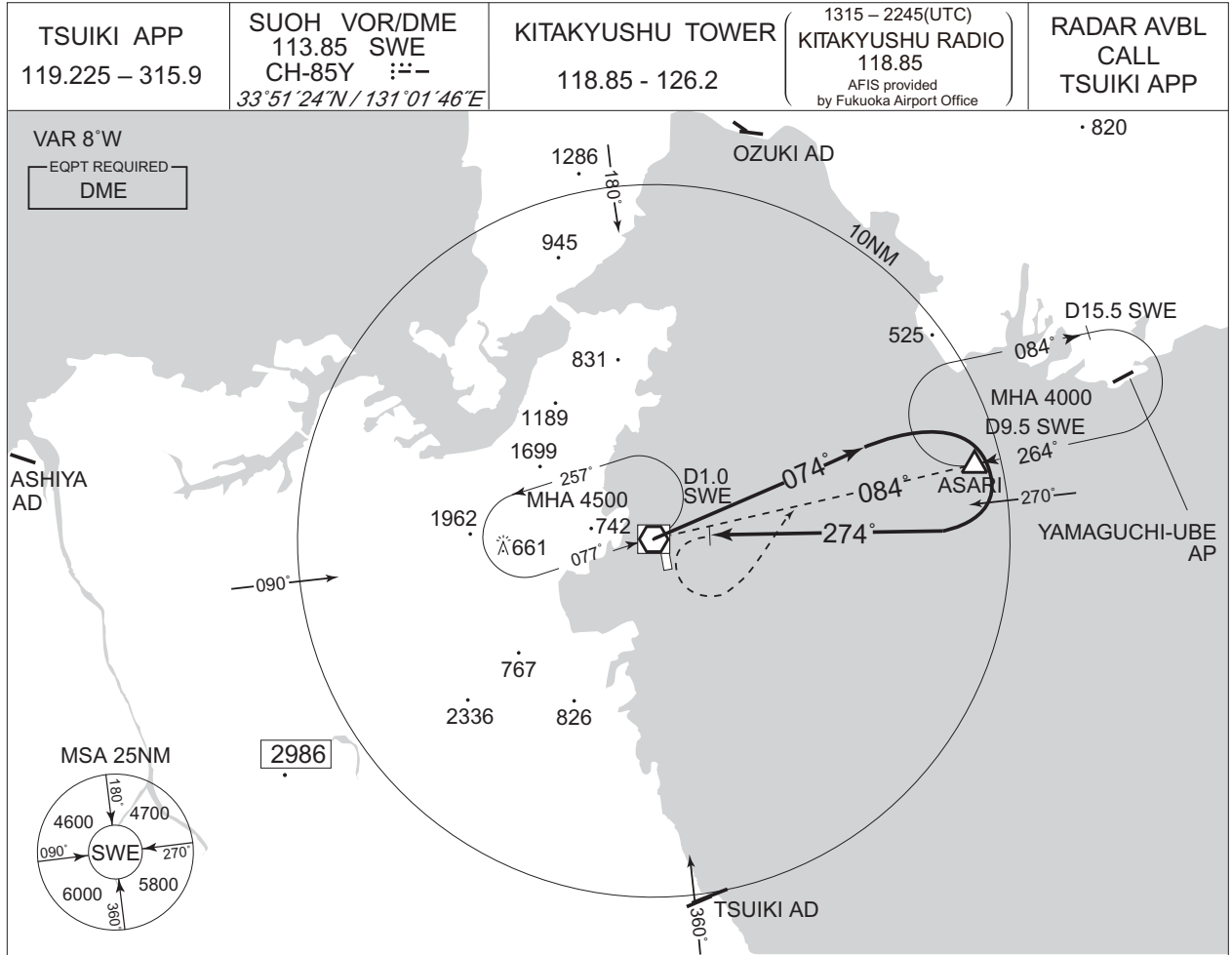
Circling to East side of RWY only.

CHANGE : Description of VAR.

INSTRUMENT APPROACH CHART

RJFR / KITAKYUSHU

VOR B



MISSED APPROACH
At 1.0DME prior to SWE VOR/DME, turn left and climb to 4000FT via SWE R084 to ASARI and hold. Contact TSUIKI APP.

Remain within SWE 10DME

DME to SWE 1.0

MINIMA		AD elev. 21
CAT	CIRCLING	
	MDA(H)	VIS
A	500 (479)	1600
B		2400
C		3200
D	580 (559)	3200

Circling to East side of RWY only.

CHANGE : Description of VAR.

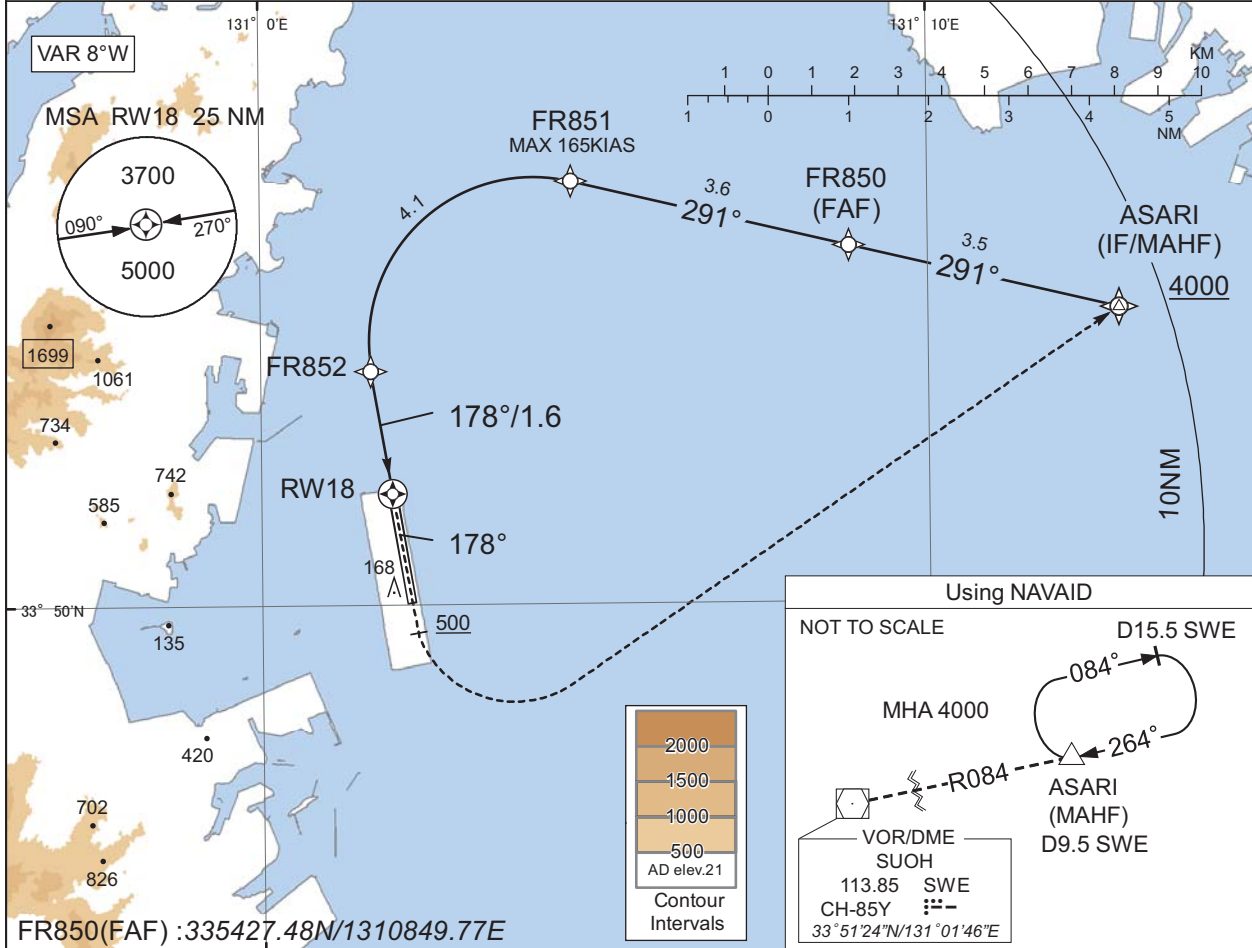
INSTRUMENT APPROACH CHART

RJFR / KITAKYUSHU

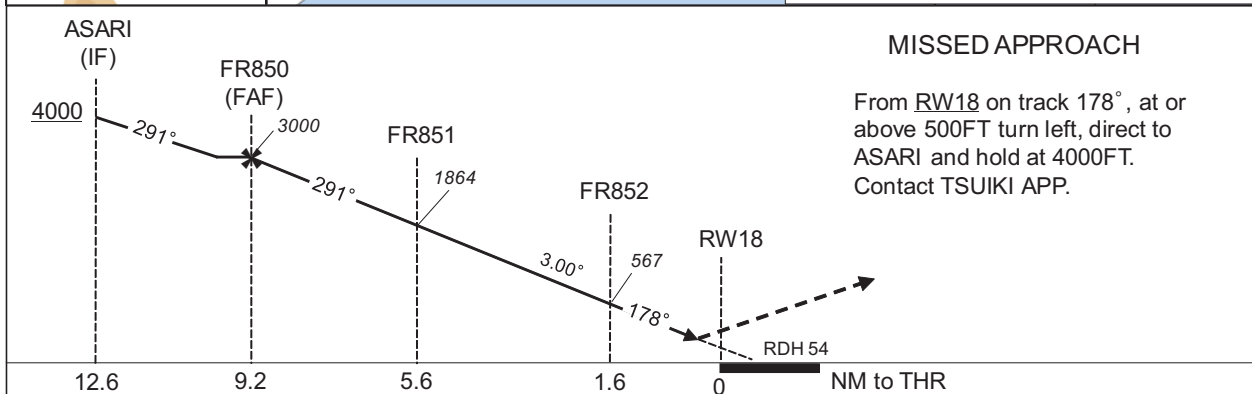
RNP RWY18(AR)

TSUIKI APP 119.225 - 315.9	RNP AR RF required.	KITAKYUSHU TOWER 118.85 - 126.2	1315 - 2245(UTC) KITAKYUSHU RADIO 118.85 AFIS provided by Fukuoka Airport Office	RADAR AVBL CALL TSUIKI APP
-------------------------------	------------------------	------------------------------------	--	----------------------------------

For uncompensated Baro-VNAV systems, procedure not authorized below -5°C / above 45°C



FR850(FAF) : 335427.48N/1310849.77E



MISSED APPROACH

From RW18 on track 178°, at or above 500FT turn left, direct to ASARI and hold at 4000FT. Contact TSUIKI APP.

Missed APCH climb gradient MNM 5.0%

MINIMA	THR elev. 22	AD elev. 21
CAT	RNP 0.30	
	DA(H)	RVR/CMV
A	-	-
B	-	-
C	322(300)	1000
D	-	1400

Authorization Required

MINIMA with Missed APCH climb gradient of 2.5% are not established.

CHANGE : Description of VAR.

INSTRUMENT APPROACH CHART

RJFR / KITAKYUSHU

RNP RWY18(AR)

Coding Table

Serial Number	Path Descriptor	Waypoint Identifier	Fly Over	Course °M(°T)	Magnetic Variation	Distance (NM)	Turn Direction	Altitude (FT)	Speed (KIAS)	VPA/ RDH (°/FT)	RNP Value
001	IF	ASARI	-	-	-7.9	-	-	+4000	-	-	-
002	TF	FR850	-	291 (283.6)	-7.9	3.5	-	3000	-	-	1.0
003	TF	FR851	-	291 (283.5)	-7.9	3.6	-	1864	-165	-3.00	0.3
004	RF Center: FRRF1 r=2.06NM	FR852	-	-	-7.9	4.1	L	567	-	-3.00	0.3
005	TF	RW18	Y	178 (170.4)	-7.9	1.6	-	76	-	-3.00/54	0.3
006	FA	-	-	178 (170.4)	-7.9	-	-	+500	-	-	1.0
007	DF	ASARI	-	-	-7.9	-	L	4000	-	-	1.0

Waypoint Coordinates

Waypoint Identifier	Coordinates	RF Arc Center Identifier	Coordinates
ASARI	335338.98N / 1311252.32E	FRRF1	335316.61N / 1310405.62E
FR850	335427.48N / 1310849.77E		
FR851	335517.24N / 1310440.15E		
FR852	335255.76N / 1310139.03E		
RW18	335123.92N / 1310157.83E		

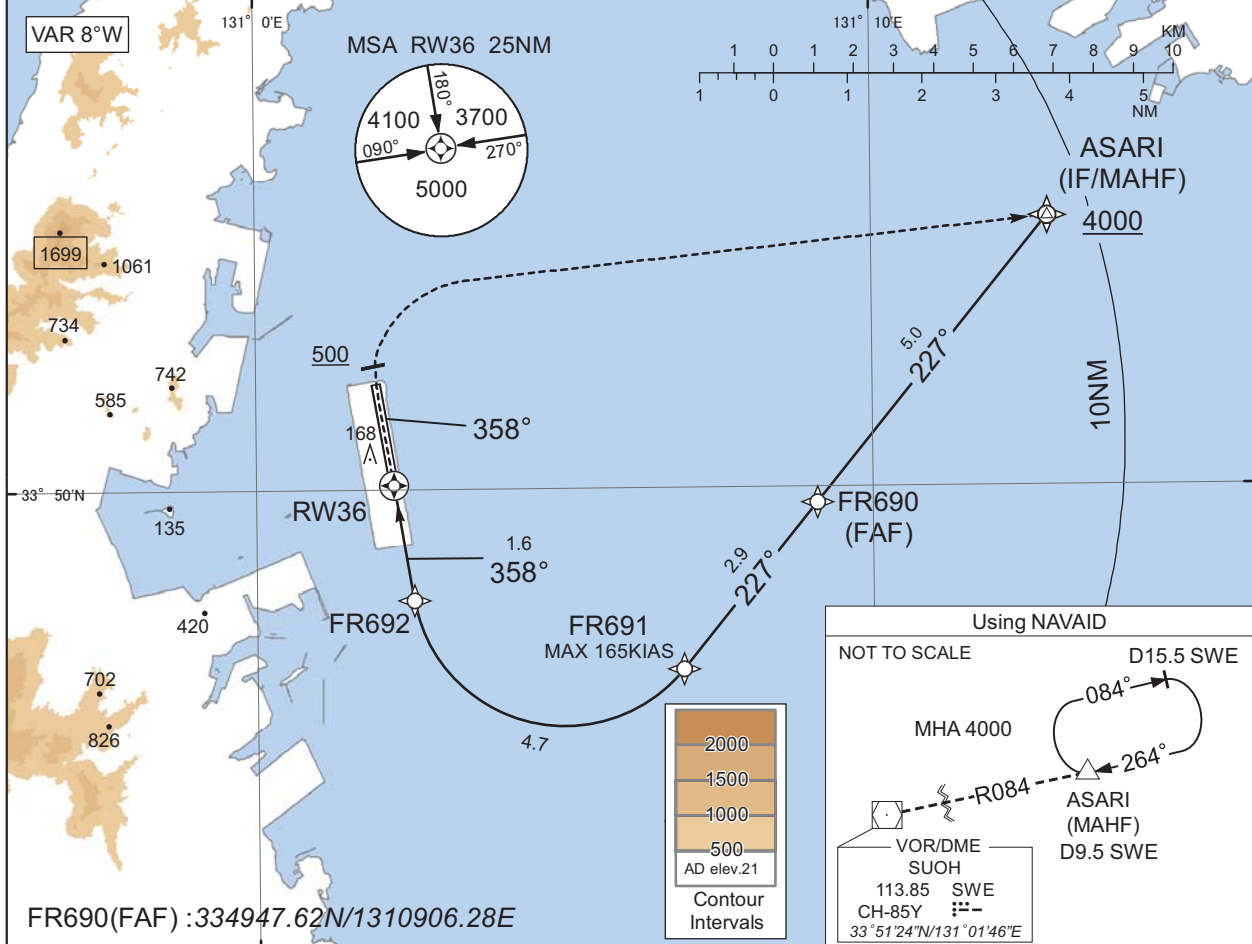
INSTRUMENT APPROACH CHART

RJFR / KITAKYUSHU

RNP RWY36(AR)

TSUIKI APP 119.225 - 315.9	RNP AR RF required.	KITAKYUSHU TOWER 118.85 - 126.2	1315 - 2245(UTC) KITAKYUSHU RADIO 118.85 AFIS provided by Fukuoka Airport Office	RADAR AVBL CALL TSUIKI APP
-------------------------------	------------------------	------------------------------------	--	----------------------------------

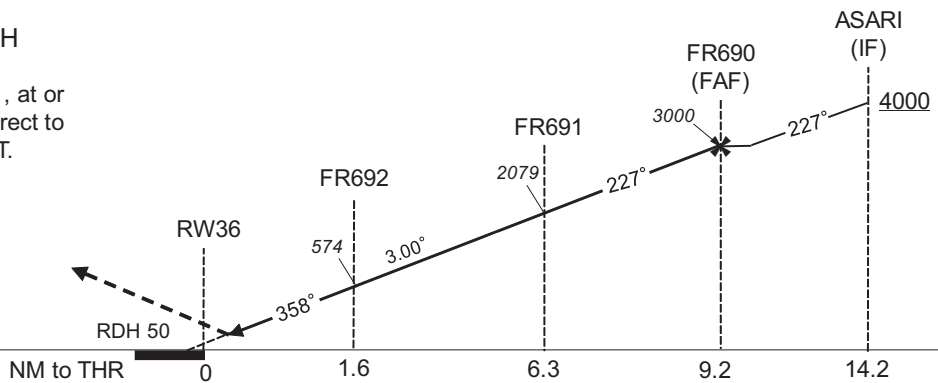
For uncompensated Baro-VNAV systems, procedure not authorized below -5°C / above 45°C



FR690(FAF) : 334947.62N/1310906.28E

MISSED APPROACH

From RW36 on track 358°, at or above 500FT turn right, direct to ASARI and hold at 4000FT. Contact TSUIKI APP.



Missed APCH climb gradient MNM 5.0%

MINIMA		
CAT	THR elev. 23	AD elev. 21
RNP 0.30		
	DA(H)	CMV
A	-	-
B	-	-
C	329(306)	1400
D		1600

Authorization Required

MINIMA with Missed APCH climb gradient of 2.5% are not established.

CHANGE : Description of VAR.

INSTRUMENT APPROACH CHART

RJFR / KITAKYUSHU

RNP RWY36(AR)

Coding Table

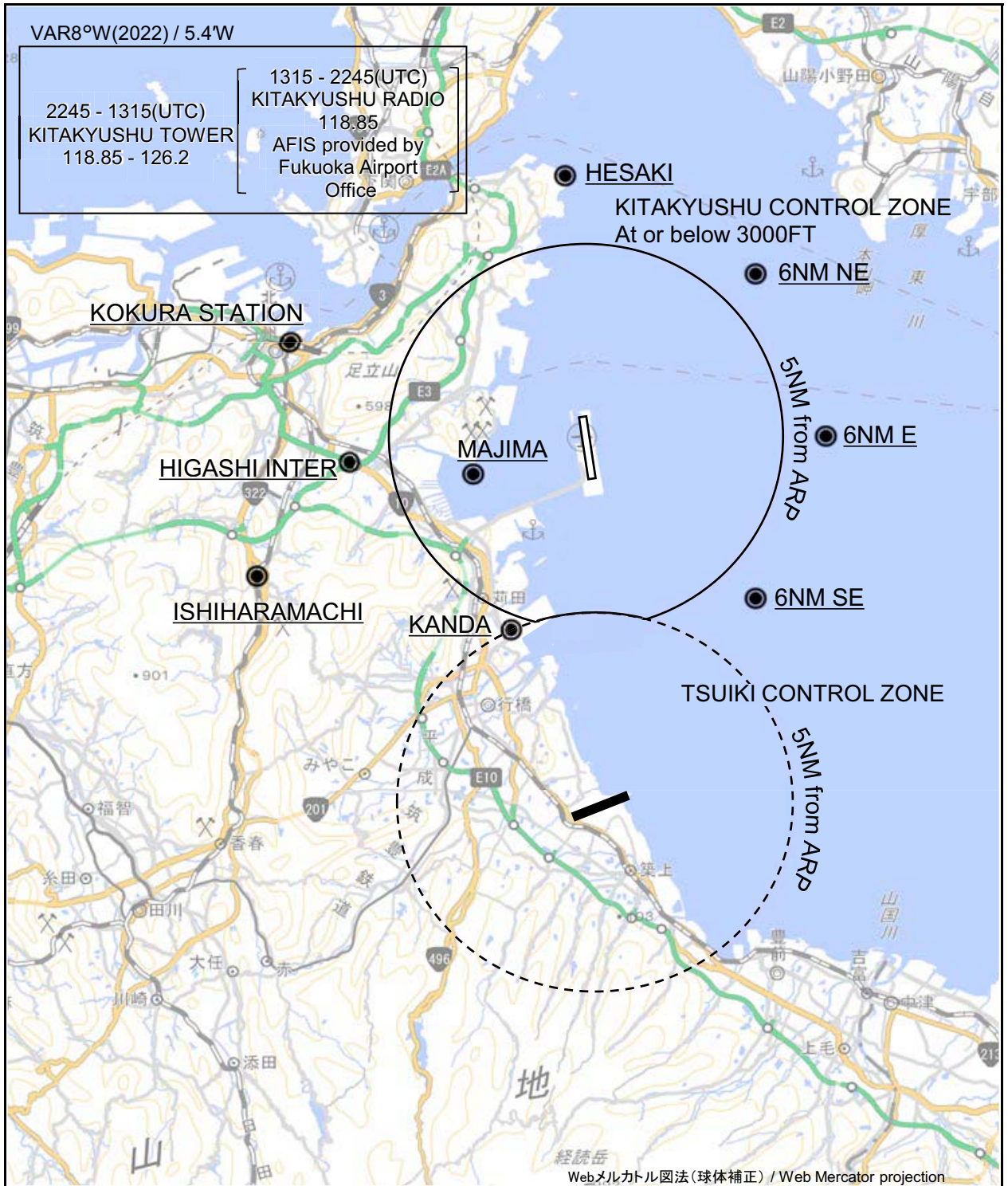
Serial Number	Path Descriptor	Waypoint Identifier	Fly Over	Course °M(°T)	Magnetic Variation	Distance (NM)	Turn Direction	Altitude (FT)	Speed (KIAS)	VPA/RDH (°/FT)	RNP Value
001	IF	ASARI	-	-	-7.9	-	-	+4000	-	-	-
002	TF	FR690	-	227 (219.1)	-7.9	5.0	-	3000	-	-	1.0
003	TF	FR691	-	227 (219.0)	-7.9	2.9	-	2079	-165	-3.00	0.3
004	RF Center: FRRF2 r=2.06NM	FR692	-	-	-7.9	4.7	R	574	-	-3.00	0.3
005	TF	RW36	Y	358 (350.4)	-7.9	1.6	-	73	-	-3.00/50	0.3
006	FA	-	-	358 (350.4)	-7.9	-	-	+500	-	-	1.0
007	DF	ASARI	-	-	-7.9	-	R	4000	-	-	1.0

Waypoint Coordinates

Waypoint Identifier	Coordinates	RF Arc Center Identifier	Coordinates
ASARI	335338.98N / 1311252.32E	FRRF2	334851.32N / 1310459.78E
FR690	334947.62N / 1310906.28E		
FR691	334733.05N / 1310655.02E		
FR692	334830.46N / 1310233.32E		
RW36	335004.08N / 1310214.17E		

RJFR / KITAKYUSHU

Visual REP



CHANGE : Map updated.

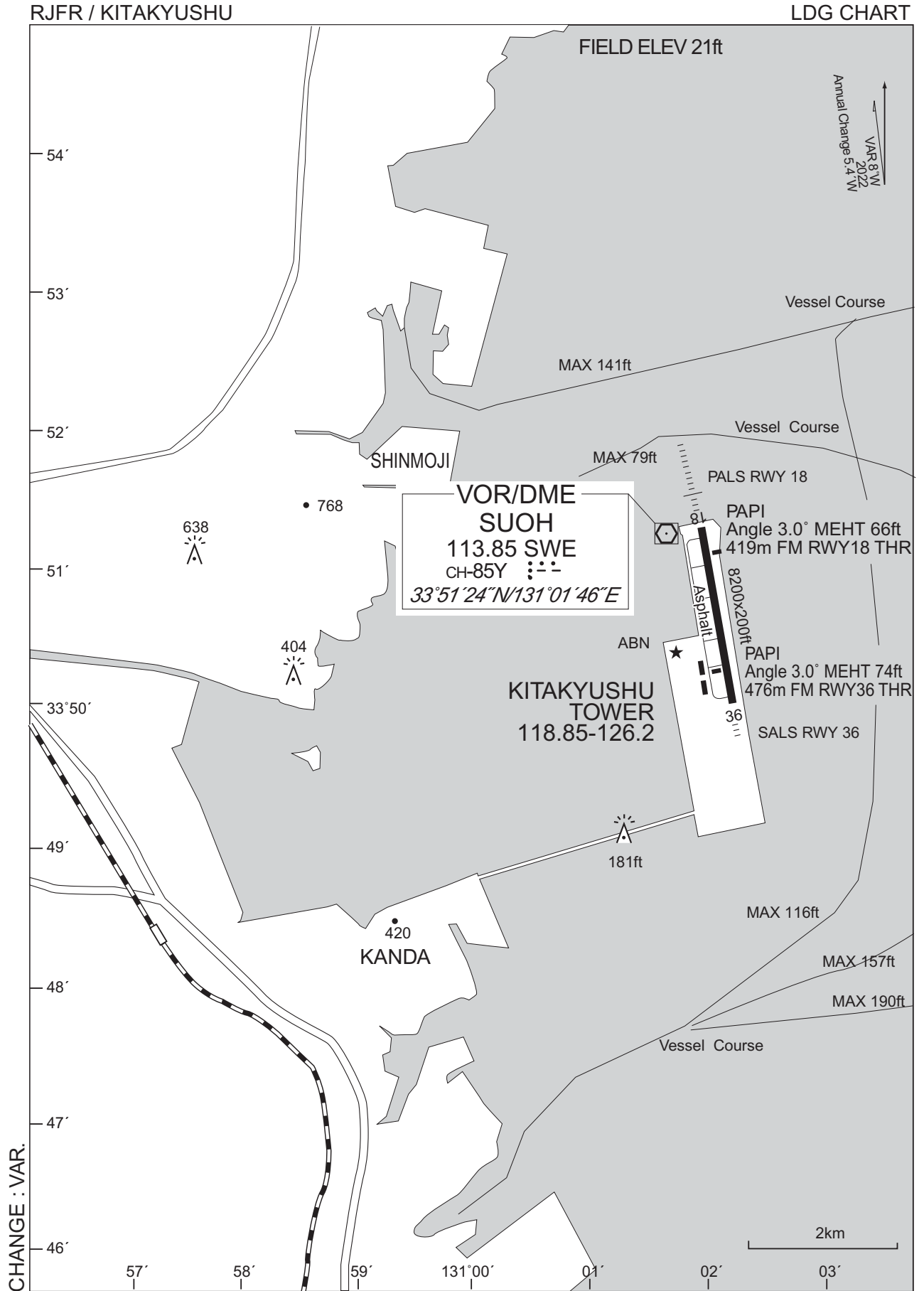
※図中に標高を示す数字がある場合、単位はメートル(m)である。The unit of measurement used to express elevation is meter(m).

RJFR / KITAKYUSHU

Visual REP

Call sign	BRG / DIST from ARP	Remarks
部崎 Hesaki	355°T / 6.8NM	灯台 Lighthouse
6NM NE	045°T / 6.0NM	海上 Over the sea
6NM E	090°T / 6.0NM	海上 Over the sea
6NM SE	135°T / 6.0NM	海上 Over the sea
苅田 Kanda	202°T / 5.5NM	日産自動車九州工場 Automobile manufacturing plant
石原町 Ishiharamachi	247°T / 9.2NM	JR石原町駅 Station
間島 Majima	252°T / 3.1NM	島 Island
東インター Higashi Inter	263°T / 6.2NM	小倉東I.C.(九州自動車道) Interchange
小倉ステーション Kokura Station	288°T / 8.0NM	JR小倉駅 Station

CHANGE : BRG/DIST from ARP. Remarks(Kanda).



RJFR / KITAKYUSHU

Minimum Vectoring Altitude CHART

