

STANDARD DEPARTURE CHART-INSTRUMENT

RJFZ / TSUIKI

SID and TRANSITION

CHANGE : PROC renamed(MISHIMA FIVE DEPARTURE). PROC course(MISHIMA FIVE DEPARTURE).

MISHIMA FIVE DEPARTURE

RWY 07 : Turn right....

RWY 25 : Turn left within 3NM....

....Climb via TQT R150 to TQT 15.0DME, then turn left via TQT 15.0DME counter clockwise ARC to TQT R092, then via MIT R180 to MIT TACAN.

Maintain FL150 between MIT R180/60.0DME and MINNE.

Cross MIT R180/14.0DME at assigned or specified altitude.

Note : Minimum rate of climb

JET....400FT/NM until passing 2800FT(RWY25)

PROP....340FT/NM until passing 2800FT(RWY25)

HIMESHIMA FOUR DEPARTURE

RWY 07 : Turn right....

RWY 25 : Turn left within 3NM....

....Climb via TQT R092 until HIMEH(TQT R092/29.1DME), then proceed as directed by ATC.

Cross HIMEH at assigned or specified altitude.

Note : Minimum rate of climb

JET....400FT/NM until passing 2800FT(RWY25)

PROP....340FT/NM until passing 2800FT(RWY25)

MUSASHI TRANSITION

After HIMEH, via TFE R346 to TFE VOR/DME.

KUGA SIX DEPARTURE

RWY 07 : Turn right....

RWY 25 : Turn left within 3NM....

....Climb via TQT R150 until TQT R150/15.0DME, turn left to intercept and proceed via IWT R240 (MRA5000FT) to IWT TACAN.

Cross HIMEH(IWT R240/33.6DME) at assigned or specified altitude.

Note : Minimum rate of climb

JET....400FT/NM until passing 2800FT(RWY25)

PROP....340FT/NM until passing 2800FT(RWY25)

HIMESHIMA REVERSAL THREE DEPARTURE

RWY 07 : Turn right....

RWY 25 : Turn left within 3NM....

....Climb via TQT R092 within 20NM of TQT TACAN, turn right reverse course to TQT TACAN, then proceed as directed by ATC.

Cross TQT TACAN at assigned or specified altitude.

Note : Minimum rate of climb

JET....400FT/NM until passing 2800FT(RWY25)

PROP....340FT/NM until passing 2800FT(RWY25)

STANDARD DEPARTURE CHART-INSTRUMENT

RJFZ / TSUIKI

SID and TRANSITION

NAKATSU REVERSAL TWO DEPARTURE

RWY 07 : Turn right...

RWY 25 : Turn left within 3NM....

....Climb via TQT R150 within 20NM of TQT TACAN, turn(direction specified by ATC), reverse course to TQT TACAN, then proceed as directed by ATC.

Cross TQT TACAN at assigned or specified altitude. (MCA at TQT TACAN 6000FT)

Note : Minimum rate of climb

JET....400FT/NM until passing 2800FT(RWY25)

PROP....340FT/NM until passing 2800FT(RWY25)

KANMO TRANSITION

After TQT TACAN, proceed via TQT R351 to KANMO(TQT R351/8.6DME), then proceed as directed by ATC.

MINNE TRANSITION

After TQT TACAN, proceed via TQT R026 to MINNE, then via MIT R180 to MIT TACAN.

OGORI TRANSITION

After TQT TACAN, proceed via TQT R239 to OGORI(TQT R239/39.1DME), then proceed as directed by ATC.

Cross TQT 15.0DME at or above 7000FT.

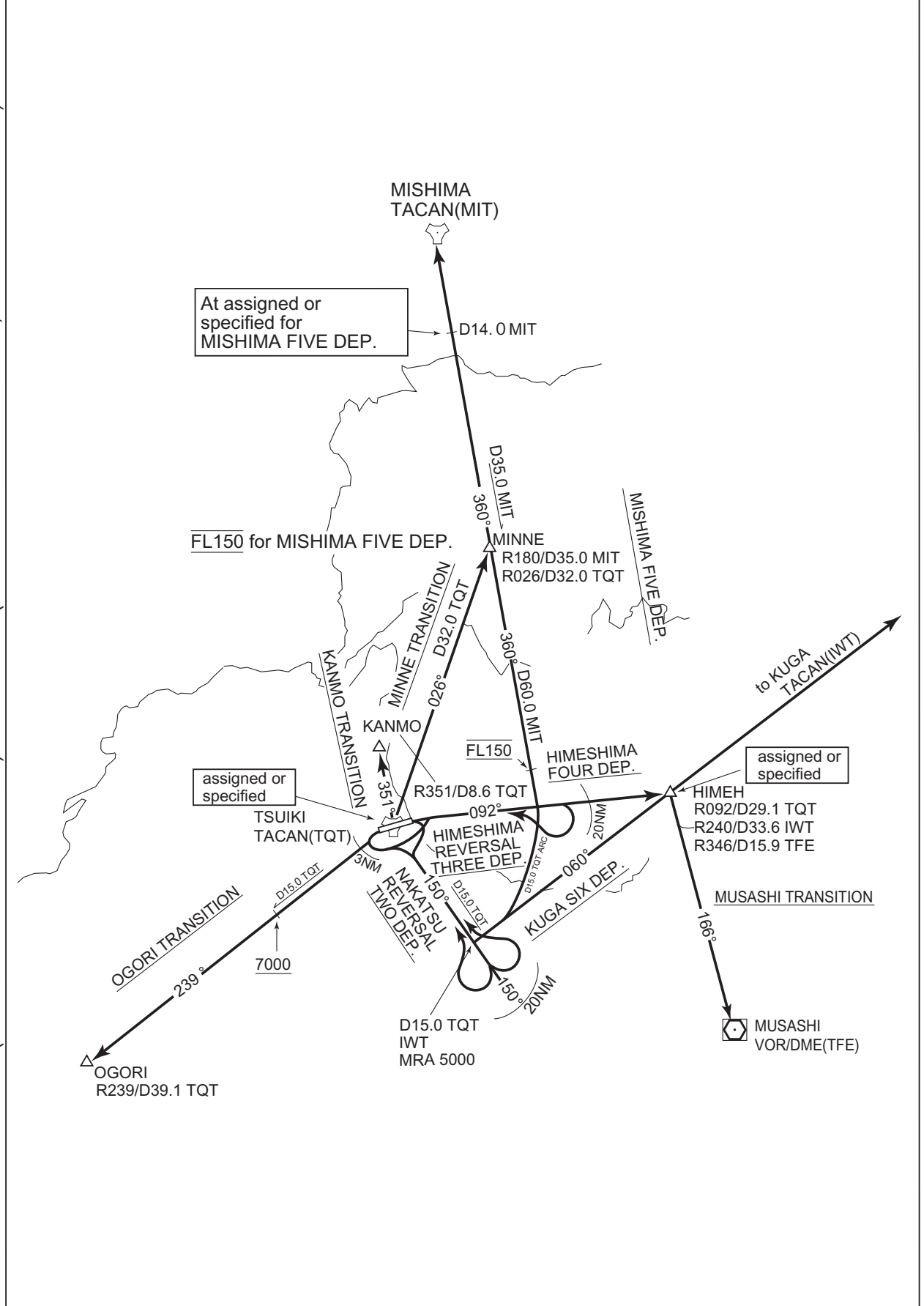
CHANGE : Course FM MINNE to MIT(MINNE TRANSITION).

STANDARD DEPARTURE CHART-INSTRUMENT

RJFZ / TSUIKI

SID and TRANSITION

CHANGE : PROC renamed(MISHIMA FIVE DEPARTURE). PROC course(MISHIMA FIVE DEPARTURE, MINNE TRANSITION).



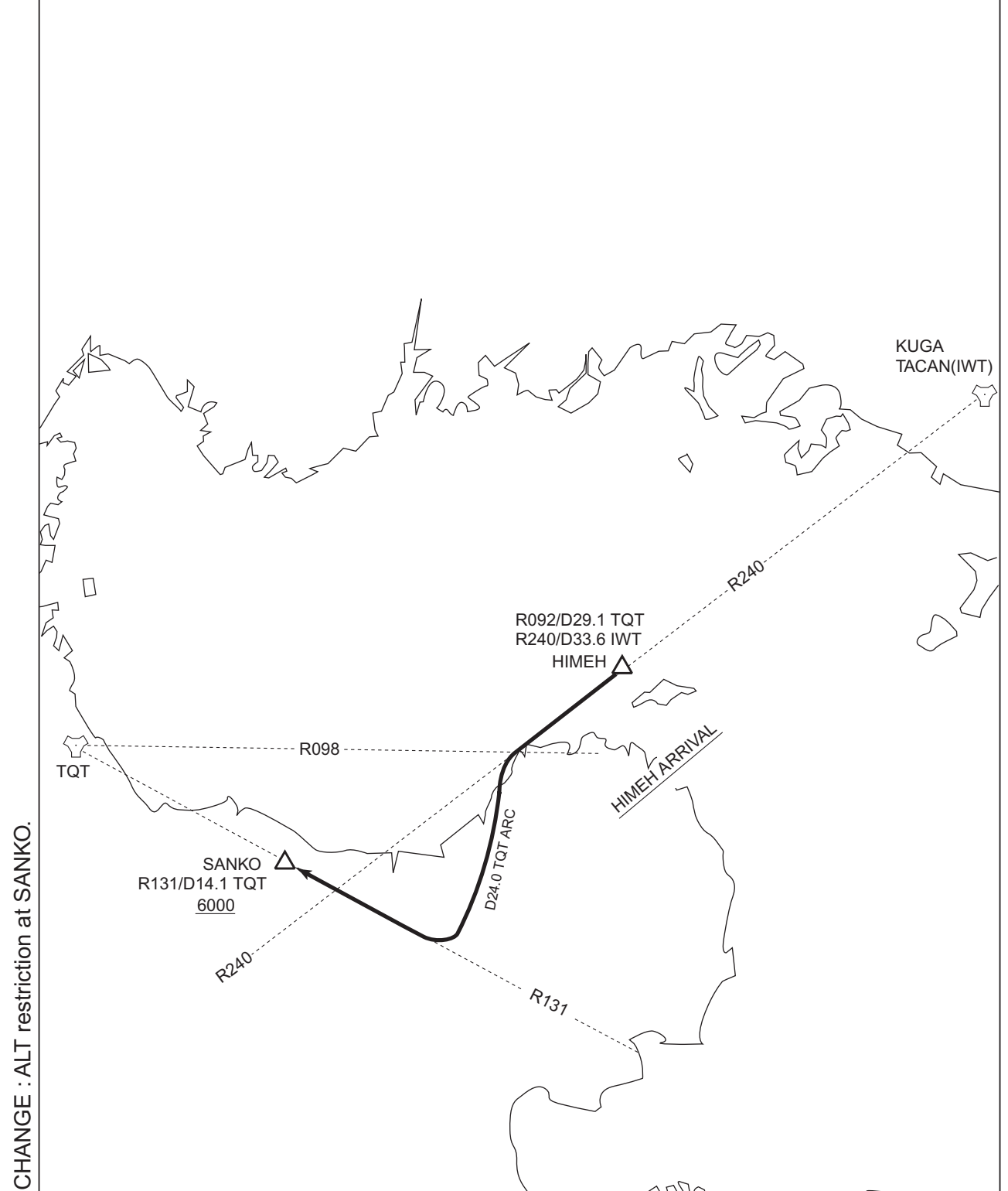
STANDARD ARRIVAL CHART - INSTRUMENT

RJFZ / TSUIKI

STAR

HIMEH ARRIVAL

From over HIMEH (IWT R240/33.6DME), proceed via IWT R240, then turn left, proceed via TQT 24.0DME clockwise ARC to TQT R131, then turn right proceed via TQT R131 to SANKO (TQT R131/14.1DME).
Cross SANKO at or above 6000FT.



CHANGE : ALT restriction at SANKO.

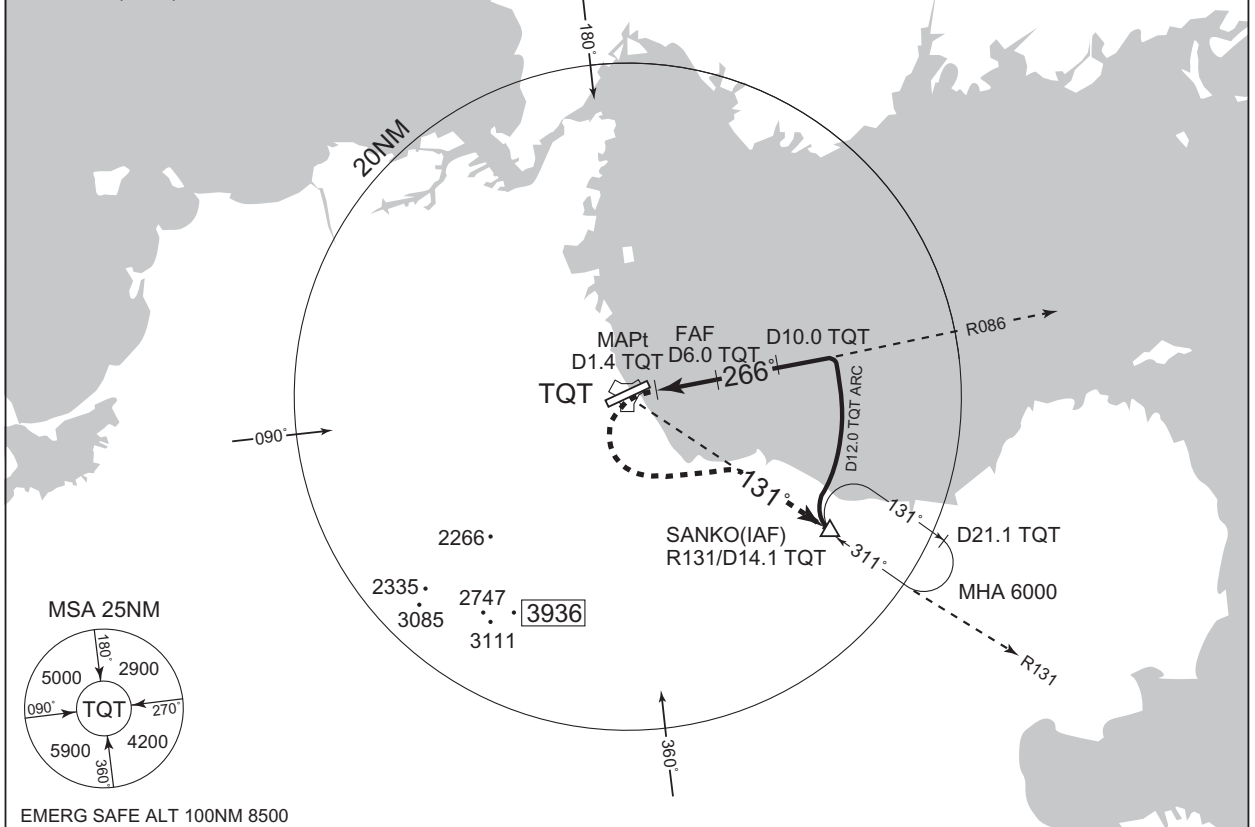
INSTRUMENT APPROACH CHART

RJFZ / TSUIKI

TACAN Z RWY25

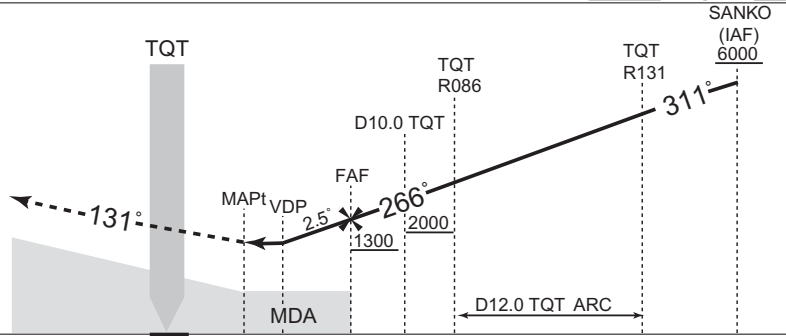
TSUIKI APP 120.1 – 321.2	TSUIKI TACAN 1002 TQT CH-41X 33°41'18"N/131°02'09"E	TSUIKI TOWER 126.2 – 236.8–318.8	RADAR AVBL
-----------------------------	--	-------------------------------------	------------

VAR 8°W (2022)



CHANGE : ALT restriction at SANKO. MHA. Description of RADAR Service.

MISSED APPROACH
At 1.4DME prior to TQT TACAN, climb to 6000FT, and turn left to intercept and proceed via TQT R131 to SANKO and hold.
Contact TSUIKI APP.



DME to TQT	1.4	2.4	6.0	10.0	12.0
NM to THR	0.6	1.6	5.2	9.2	11.2

MINIMA		THR elev. 19	AD elev. 28	
CAT	MDA(H)	RVR/CMV	CIRCLING	
			MDA(H)	VIS
A	440 (421)	1500	520 (492)	1600
B			660 (632)	
C			760 (732)	2400
D			810 (782)	3200

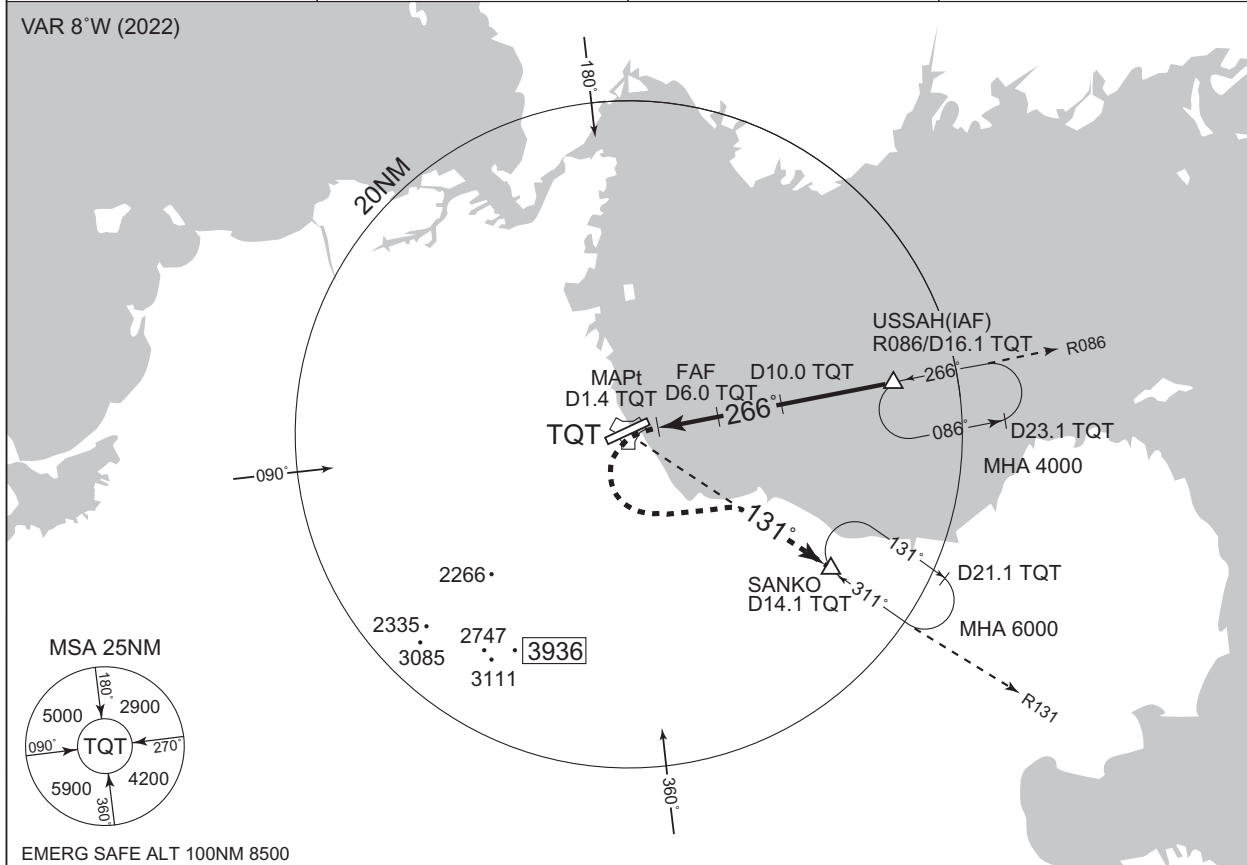
INSTRUMENT APPROACH CHART

RJFZ / TSUIKI

TACAN Y RWY25

TSUIKI APP 120.1 – 321.2	TSUIKI TACAN 1002 TQT CH-41X $\equiv - \cdot - -$ 33°41'18"N/131°02'09"E	TSUIKI TOWER 126.2 – 236.8–318.8	RADAR AVBL
-----------------------------	---	-------------------------------------	------------

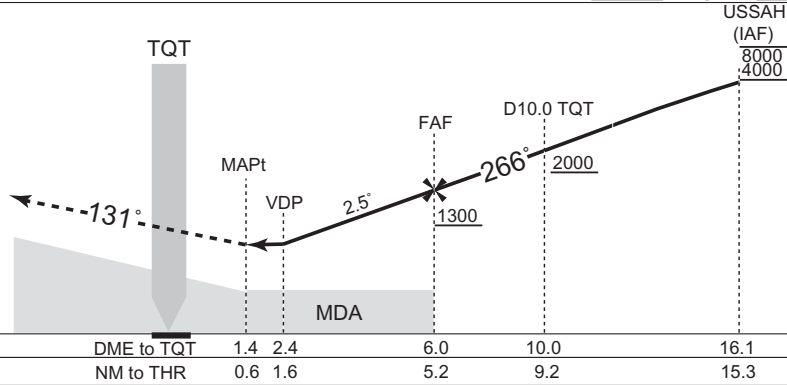
VAR 8°W (2022)



EMERG SAFE ALT 100NM 8500

MISSED APPROACH

At 1.4DME prior to TQT TACAN, climb to 6000FT, and turn left to intercept and proceed via TQT R131 to SANKO and hold. Contact TSUIKI APP.




CHANGE : MHA. Description of RADAR Service.

MINIMA		THR elev. 19	AD elev. 28	
CAT	MDA(H)	RVR/ CMV	CIRCLING	
			MDA(H)	VIS
A	440 (421)	1500	520 (492)	1600
B			660 (632)	
C			760 (732)	2400
D			810 (782)	3200

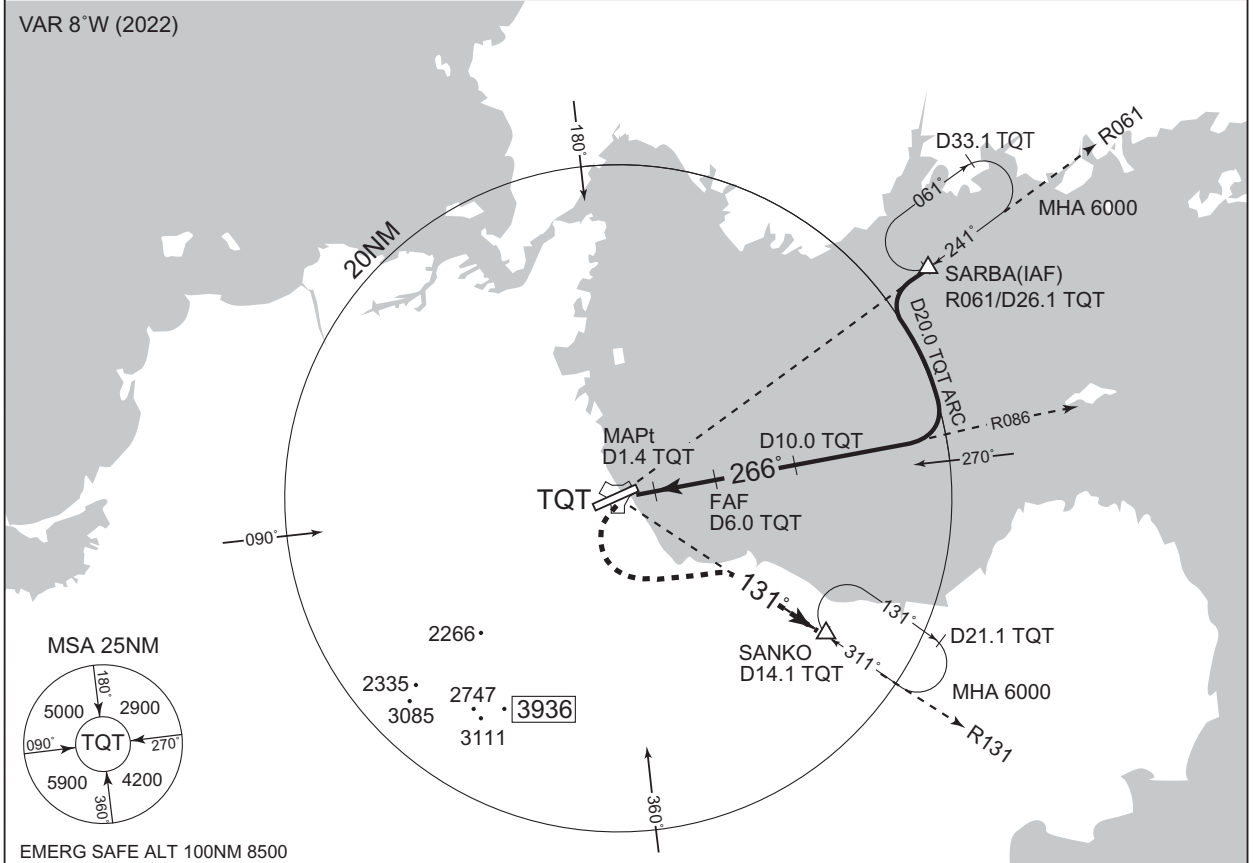
INSTRUMENT APPROACH CHART

RJFZ / TSUIKI

TACAN X RWY25

TSUIKI APP 120.1 – 321.2	TSUIKI TACAN 1002 TQT CH-41X  33°41'18"N/131°02'09"E	TSUIKI TOWER 126.2 – 236.8–318.8	RADAR AVBL
-----------------------------	--	-------------------------------------	------------

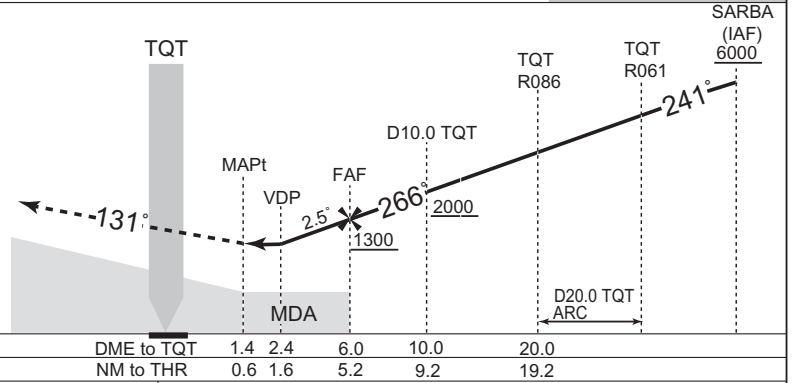
VAR 8°W (2022)



EMERG SAFE ALT 100NM 8500

MISSED APPROACH

At 1.4DME prior to TQT TACAN, climb to 6000FT, and turn left to intercept and proceed via TQT R131 to SANKO and hold.
Contact TSUIKI APP.

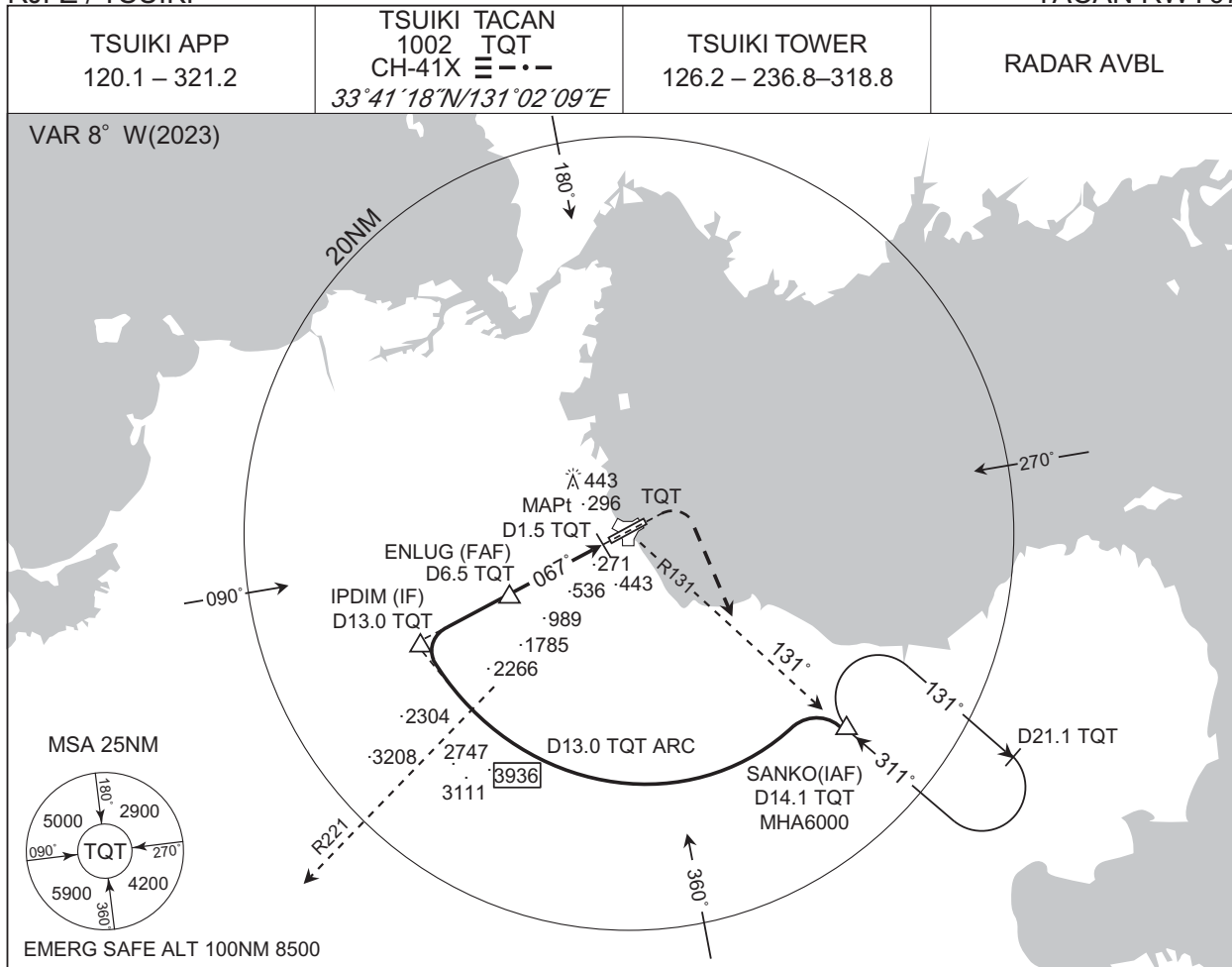


MINIMA		THR elev. 19	AD elev. 28		
CAT	MDA(H)	RVR/CMV	CIRCLING		
			MDA(H)	VIS	
A	440 (421)	1500	520 (492)	1600	
B			660 (632)		
C			760 (732)		2400
D			810 (782)		3200

INSTRUMENT APPROACH CHART

RJFZ / TSUIKI

TACAN RWY07

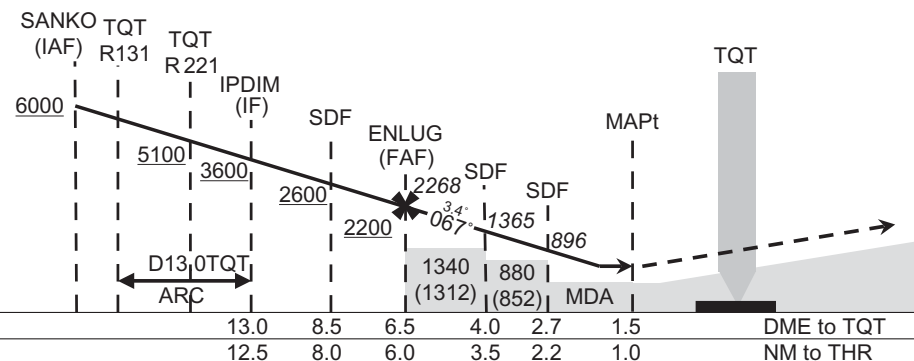


CHANGE : ENLUG, IPDIM established. VABLA, UPGUN abolished. Missed APCH PROC.

MISSED APPROACH

Climb to 6000FT via TQT R247 to TQT, Turn right TQT R131 to SANKO and hold. Contact TSUIKI APP.

PAPI and descent angle is not coincident.



MINIMA		THR elev. 52	AD elev. 28	
CAT	MDA(H)	RVR/ CMV	CIRCLING	
			MDA(H)	VIS
A	620 (592)	1500	620 (592)	1600
B			660 (632)	
C			760 (732)	
D			810 (782)	