

AD 2 AERODROMES

RJKA AD 2.1 AERODROME LOCATION INDICATOR AND NAME

RJKA - AMAMI

RJKA AD 2.2 AERODROME GEOGRAPHICAL AND ADMINISTRATIVE DATA

| | | |
|---|--|---|
| 1 | ARP coordinates and site at AD | 282551N/1294245E 025° / 1.0km FM RWY 03 THR |
| 2 | Direction and distance from (city) | 21.87km ENE from Amami city. |
| 3 | Elevation/ Reference temperature | 14ft / 33°C(2004-2008) |
| 4 | Geoid undulation at AD ELEV PSN | Nil |
| 5 | MAG VAR/ Annual change | 6° W(2021) / 5'W |
| 6 | AD Administration, address, telephone, telefax, telex, AFS, e-mail and/or Web-site addresses | KAGOSHIMA PREF PUBLIC AP 374-4, Kaneku, Nagahama, Wano, Kasari-cho, Amami-city, Kagoshima Pref. 894-0503 JAPAN. Tel:0997-63-0277 Fax:0997-63-2198 |
| 7 | Types of traffic permitted (IFR/VFR) | IFR/VFR |
| 8 | Remarks | Nil |

RJKA AD 2.3 OPERATIONAL HOURS

| | | |
|----|---------------------------|---|
| 1 | AD Administration | 2300 - 1030 |
| 2 | Customs and immigration | On request Customs: 099-260-3125 Immigration: 099-222-5658 |
| 3 | Health and sanitation | Quarantine(human): On request(099-222-8670) Quarantine(animal, plant): Nil |
| 4 | AIS Briefing Office | Nil |
| 5 | ATS Reporting Office(ARO) | Nil |
| 6 | MET Briefing Office | H24 (FUKUOKA) |
| 7 | ATS | 2300 - 1030 Remarks: AFIS provided by Naha Airport Office. |
| 8 | Fuelling | 2300 - 1030 |
| 9 | Handling | 2300 - 1030 |
| 10 | Security | 2300 - 1030 |
| 11 | De-icing | Nil |
| 12 | Remarks | Nil |

RJKA AD 2.4 HANDLING SERVICES AND FACILITIES

| | | |
|---|---|---|
| 1 | Cargo-handling facilities | All the modern institutions that deal with the weight thing to a MD81 type freighter. |
| 2 | Fuel/ oil types | JET A-1, AVGAS100 |
| 3 | Fuelling facilities/ capacity | Fuelling facilities : Fuel truck x 1, Capacity : 4500l / h |
| 4 | De-icing facilities | Nil |
| 5 | Hangar space for visiting aircraft | Nil |
| 6 | Repair facilities for visiting aircraft | Nil |
| 7 | Remarks | Nil |

RJKA AD 2.5 PASSENGER FACILITIES

| | | |
|---|----------------------|---------------------------|
| 1 | Hotels | Hotels in the city. |
| 2 | Restaurants | Available, not continuous |
| 3 | Transportation | Buses, taxis |
| 4 | Medical facilities | Hospitals in the city. |
| 5 | Bank and Post Office | Bank in the city. |
| 6 | Tourist Office | Not available |
| 7 | Remarks | Nil |

RJKA AD 2.6 RESCUE AND FIRE FIGHTING SERVICES

| | | |
|---|---|----------------------------------|
| 1 | AD category for fire fighting | CAT 7 |
| 2 | Rescue equipment | Chemical fire fighting truck x 2 |
| 3 | Capability for removal of disabled aircraft | Nil |
| 4 | Remarks | Nil |

RJKA AD 2.7 SEASONAL AVAILABILITY-CLEARING

| | | |
|---|-----------------------------|----------------|
| 1 | Types of clearing equipment | Not Applicable |
| 2 | Clearance priorities | Nil |
| 3 | Remarks | Nil |

RJKA AD 2.8 APRONS, TAXIWAYS AND CHECK LOCATIONS DATA

| | | |
|---|-------------------------------------|---|
| 1 | Apron surface and strength | Surface: cement-concrete, Strength: PCN 52/R/B/X/T |
| 2 | Taxiway width, surface and strength | T2, T3, T4 Width : 30m, Surface : Asphalt-concrete, Strength : PCN 42/F/A/X/T T1, T5 Width : :26.5m, Surface : Asphalt-concrete, Strength : PCN 42/F/A/X/T P3 Width : :23m, Surface : Asphalt-concrete, Strength : PCN 42/F/A/X/T & PCN 52/R/B/X/T P1, P2, P4 Width : :23m, Surface : Asphalt-concrete, Strength : PCN 42/F/A/X/T |
| 3 | ACL and elevation | Not available |
| 4 | VOR checkpoints | Not available |
| 5 | INS checkpoints | Spot NR 1: 282556.91N1294235.33E 2: 282555.56N1294233.44E 3: 282554.10N1294232.64E 5: 282552.47N1294231.91E 6: 282550.93N1294232.34E 7: 282549.75N1294230.89E 8: 282548.65N1294230.29E |
| 6 | Remarks | Nil |

RJKA AD 2.9 SURFACE MOVEMENT GUIDANCE AND CONTROL SYSTEM AND MARKINGS

| | | |
|---|--|--|
| 1 | Use of aircraft stand ID signs, TWY guide lines and Visual docking/ parking guidance system of aircraft stands | Nil |
| 2 | RWY and TWY markings and LGT | RWY: RWY 03/21 (Marking) RWY designation, RWY CL, RWY THR, RWY middle point, Aiming point, TDZ, RWY side stripe (LGT) RCLL, REDL, RTHL, WBAR(RWY03), RENL, RTZL(RWY03) TWY: (Marking) TWY CL, RWY HLDG PSN(T1-T5), TWY side stripe (LGT) TWY edge LGT, TWY CL LGT, RWY guard LGT(T1-T5), Taxiing guidance sign(T1-T5) |
| 3 | Stop bars | Nil |
| 4 | Remarks | (Marking) Overrun area (LGT) APN flood LGT |

RJKA AD 2.10 AERODROME OBSTACLES

■ In Area2 See Obstacle data

■ In Area3 To be developed

RJKA AD 2.11 METEOROLOGICAL INFORMATION PROVIDED

| | | |
|----|--|--|
| 1 | Associated MET Office | FUKUOKA |
| 2 | Hours of service MET Office outside hours | H24 (FUKUOKA) |
| 3 | Office responsible for TAF preparation Periods of validity | Nil |
| 4 | Trend forecast Interval of issuance | Nil |
| 5 | Briefing/ consultation provided | Briefing is available upon inquiry at FUKUOKA |
| 6 | Flight documentation Language(s) used | C En |
| 7 | Charts and other information available for briefing or consultation | S ₆ , U ₈₅ , U ₇ , U ₅ , U ₃ , U ₂₅ , U ₂ /T _r , P _S , P ₅ , P ₃ , P ₂₅ , P _{SWE} , P _{SWF} , P _{SWG} , P _{SWI} , P _{SWM} , P _{SW} (domestic), E, C, W _E , W _F , W _G , W _I , W, N |
| 8 | Supplementary equipment available for providing information | Nil |
| 9 | ATS units provided with information | RADIO |
| 10 | Additional information (limitation of service, etc.) | Nil |

RJKA AD 2.12 RUNWAY PHYSICAL CHARACTERISTICS

| Designations RWY NR | TRUE BRG | Dimensions of RWY(M) | Strength(PCN) and surface of RWY | THR coordinates THR geoid undulation | THR elevation and highest elevation of TDZ of precision APP RWY |
|------------------------|------------------------|---------------------------------|--|---|---|
| 1 | 2 | 3 | 4 | 5 | 6 |
| 03 | 025.75° | 2000×45 | PCN 42/F/A/X/T Asphalt Concrete | 282521.18N 1294229.11E | THR ELEV: 27ft TDZ ELEV : 27ft |
| 21 | 205.75° | 2000×45 | PCN 42/F/A/X/T Asphalt Concrete | 282619.61N 1294301.26E | THR ELEV: 14ft |
| Slope of RWY | Strip Dimensions(M) | RESA (Overrun) Dimensions(M) | Remarks | | |
| 7 | 10 | 11 | 14 | | |
| See AD2.24 AD chart | 2120×300 | 189 × (MNM:153 MAX:298)* | RWY Grooving:2000×30m | | |
| | 2120×300 | 41 × (MNM:218 MAX:252)* | *For detail, ask airport administrator | | |

RJKA AD 2.13 DECLARED DISTANCES

| RWY Designator | TORA (m) | TODA (m) | ASDA (m) | LDA (m) | Remarks |
|----------------|-------------|-------------|-------------|------------|---------|
| 1 | 2 | 3 | 4 | 5 | 6 |
| 03 | 2000 | 2000 | 2000 | 2000 | Nil |
| 21 | 2000 | 2000 | 2000 | 2000 | Nil |

RJKA AD 2.14 APPROACH AND RUNWAY LIGHTING

| RWY Designator | APCH LGT type LEN INTST | RTHL Color WBAR | PAPI (VASIS) Angle DIST FM THR MEHT | RTZL LEN | RCLL LEN Spacing Color INTST | REDL LEN Spacing Color INTST | RENL Color WBAR | STWL LEN Color |
|---|-------------------------------------|-----------------------|--|-------------|---|--|-----------------------|----------------------|
| 1 | 2 | 3 | 4 | 5 | 6 | 7 | 8 | 9 |
| 03 | PALS (CAT I) 900m LIH | Green Green | PAPI 3.0°/LEFT 415m 61ft | 900m | 2000m 30m Coded color (White/Red) LIH | 2000m 60m Coded color (White/Yellow) LIH | RED | Nil (*2) |
| 21 | SALS (*1) 360m LIH | Green Nil | PAPI 3.0°/LEFT 374m 61ft | Nil | 2000m 30m Coded color (White/Red) LIH | 2000m 60m Coded color (White/Yellow) LIH | RED | Nil (*2) |
| Remarks | | | | | | | | |
| 10 | | | | | | | | |
| SALS with APCH LGT beacon(600m and 900m FM RWY THR)(*1) Overrun area edge LGT(LEN:60m Color:Red)(*2) | | | | | | | | |

RJKA AD 2.15 OTHER LIGHTING, SECONDARY POWER SUPPLY

| | | |
|---|--|--|
| 1 | ABN/IBN location, characteristics and hours of operation | ABN: 282551N/1294222E, White/Green EV4.3sec, HO |
| 2 | LDI location and LGT Anemometer location and LGT | LDI : Nil Anemometer : RWY 03 : 330m FM RWY 03 THR, LGTD RWY 21 : 320m FM RWY 21 THR, LGTD |
| 3 | TWY edge and centerline lighting | TWY edge and center line lights installed, see AD 2.9 |
| 4 | Secondary power supply/ switch-over time | Within 1sec: REDL, RENL, RTHL, WBAR, RCLL and Overrun area edge LGT Within 15sec: Other Lights |
| 5 | Remarks | WDI LGT |

RJKA AD 2.16 HELICOPTER LANDING AREA

| |
|-----|
| Nil |
|-----|

RJKA AD 2.17 ATS AIRSPACE

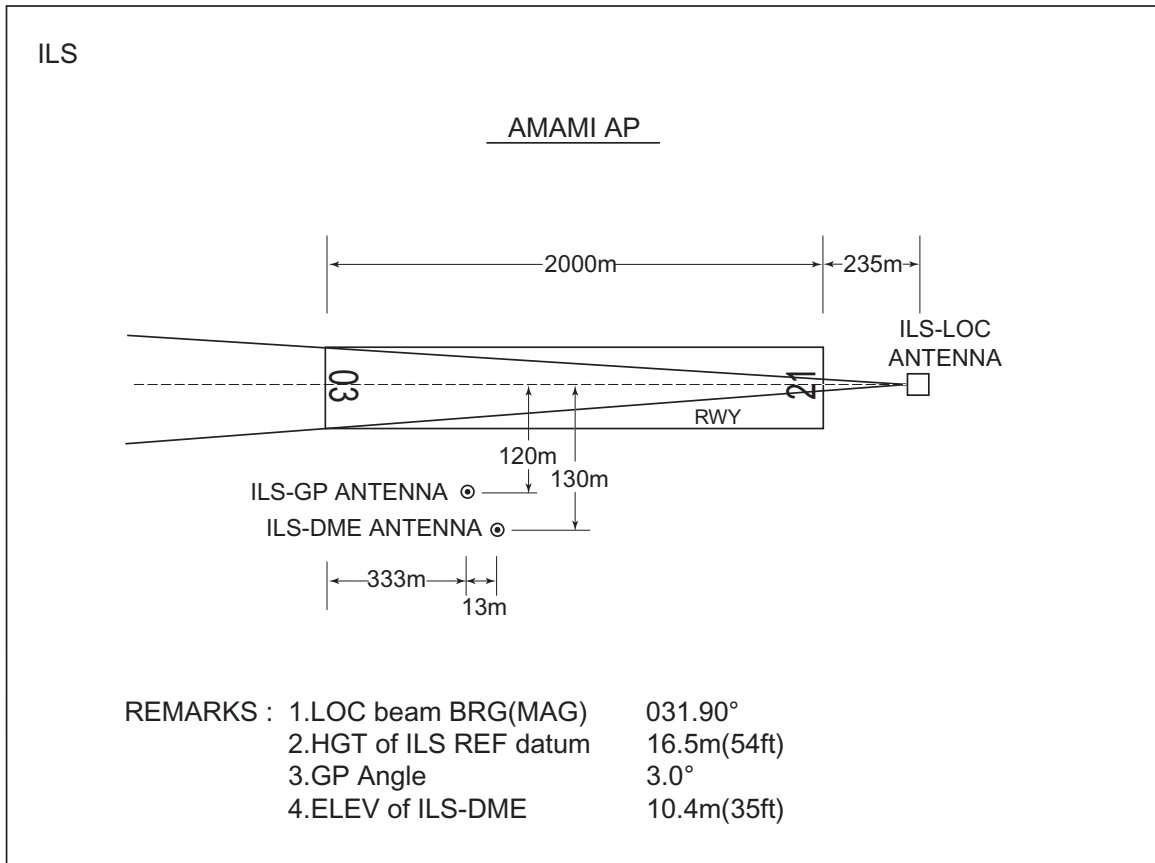
| Designation and lateral limits | | Vertical limits (ft) | Airspace classification | ATS unit call sign Language | Remarks |
|--------------------------------|---|----------------------|-------------------------|-----------------------------|---------|
| 1 | | 2 | 3 | 4 | 6 |
| Amami Information Zone | Area within a radius of 5nm(9km) of Amami ARP | 3,000 or below | E | AMAMI RADIO En | |
| Naha ACA | See ROAH attached chart | | E | Naha APP En | |

RJKA AD 2.18 ATS COMMUNICATION FACILITIES

| Service designation | Call sign | Frequency | Hours of operation | Remarks |
|---------------------|---------------|--------------------------|--------------------|--|
| 1 | 2 | 3 | 4 | 5 |
| APP | NAHA APPROACH | 124.95MHz 280.1MHz | 2300 - 1030 | |
| AFIS | AMAMI RADIO | 118.15MHz(1) 126.2MHz | 2300 - 1030 | Operated by Naha Airport Office. (1)Primary |

RJKA AD 2.19 RADIO NAVIGATION AND LANDING AIDS

| Type of aid (VOR declination) | ID | Frequency | Hours of operation | Position of transmitting antenna coordinates | Elevation of DME transmitting antenna | Remarks |
|----------------------------------|-----|---------------------|--------------------|--|---------------------------------------|--|
| 1 | 2 | 3 | 4 | 5 | 6 | 7 |
| VOR (6°W/2015) | AME | 113.95MHz | H24 | 282604.98N 1294241.07E | | VOR Unusable : 260°-280° beyond 20nm BLW 3000ft. |
| DME | AME | 1047MHz (CH-86Y) | H24 | 282604.98N 1294241.07E | 43ft | DME Unusable : 360°-010° beyond 20nm BLW 3000ft. 260°-280° beyond 15nm BLW 3000ft. 280°-300° beyond 20nm BLW 3000ft. 320°-360° beyond 20nm BLW 3000ft. |
| ILS-LOC 03 | IAM | 109.3MHz | 2300 - 1030 | 282626.50N 1294305.06E | | LOC: 235m (771ft) away FM RWY 21 THR, BRG (MAG) 031.90° |
| ILS-DME 03 | IAM | 991MHz | 2300 - 1030 | 282529.47N 1294238.89E | 35ft | DME: 346m (1135ft) inside FM RWY 03 THR, 130m (427ft) SE of RCL. |
| ILS-GP 03 | - | 332.0MHz | 2300 - 1030 | 282529.21N 1294238.44E | | GP: 333m (1093ft) inside FM RWY 03 THR, 120m (394ft) SE of RCL. GP Angle 3.0°, HGT of ILS Ref datum 16.5m (54ft). |
| MSAS | | 1575.42MHz | H24 | | | Transmitting antennas are satellite based. |



RJKA AD 2.20 LOCAL TRAFFIC REGULATIONS

1. Airport regulations

| |
|--|
| PPR for transient ACFT to use this AP. |
|--|

2. Taxiing to and from stands

| |
|-----|
| Nil |
|-----|

3. Parking area for small aircraft(General aviation)

| |
|-----|
| Nil |
|-----|

4. Parking area for helicopters

| |
|-----|
| Nil |
|-----|

5. Apron - taxiing during winter conditions

| |
|-----|
| Nil |
|-----|

6. Taxiing - limitations

| |
|-----|
| Nil |
|-----|

7. School and training flights - technical test flights - use of runways

| |
|-----|
| Nil |
|-----|

8. Helicopter traffic - limitation

| |
|-----|
| Nil |
|-----|

9. Removal of disabled aircraft from runways

| |
|-----|
| Nil |
|-----|

RJKA AD 2.21 NOISE ABATEMENT PROCEDURES

| |
|-----|
| Nil |
|-----|

RJKA AD 2.22 FLIGHT PROCEDURES

1.TAKE OFF MINIMA

| | RWY | ACFT CAT | REDL & RCLL | | REDL or RCLL or RCL marking | | NIL (DAYTIME ONLY) | |
|---|-----|------------|-----------------|-----|-----------------------------|-----|--------------------|-----|
| | | | RVR | VIS | RVR | VIS | RVR | VIS |
| Multi-Engine ACFT with TKOF ALTN AP FILED | 03 | A, B, C, D | 400 | 400 | 400 | 400 | - | 500 |
| | 21 | A, B, C, D | - | 400 | - | 400 | - | 500 |
| OTHER | 03 | A, B, C, D | AVBL LDG MINIMA | | | | | |
| | 21 | | | | | | | |

2.Lost communication procedures for arrival aircraft under radar navigational guidance

If radio communications with Naha Approach are lost for one minute, squawk Mode A/3 Code 7600 and;

- 1) Contact Amami Radio.
- 2) If unable, proceed in accordance with Visual Flight Rules.
- 3) If unable, proceed to Kasari VOR at the last assigned altitude, or 3,000 feet whichever is higher, and execute instrument approach.

NOTE: Procedures other than above will be issued when situation requires.

RJKA AD 2.23 ADDITIONAL INFORMATION

Nil

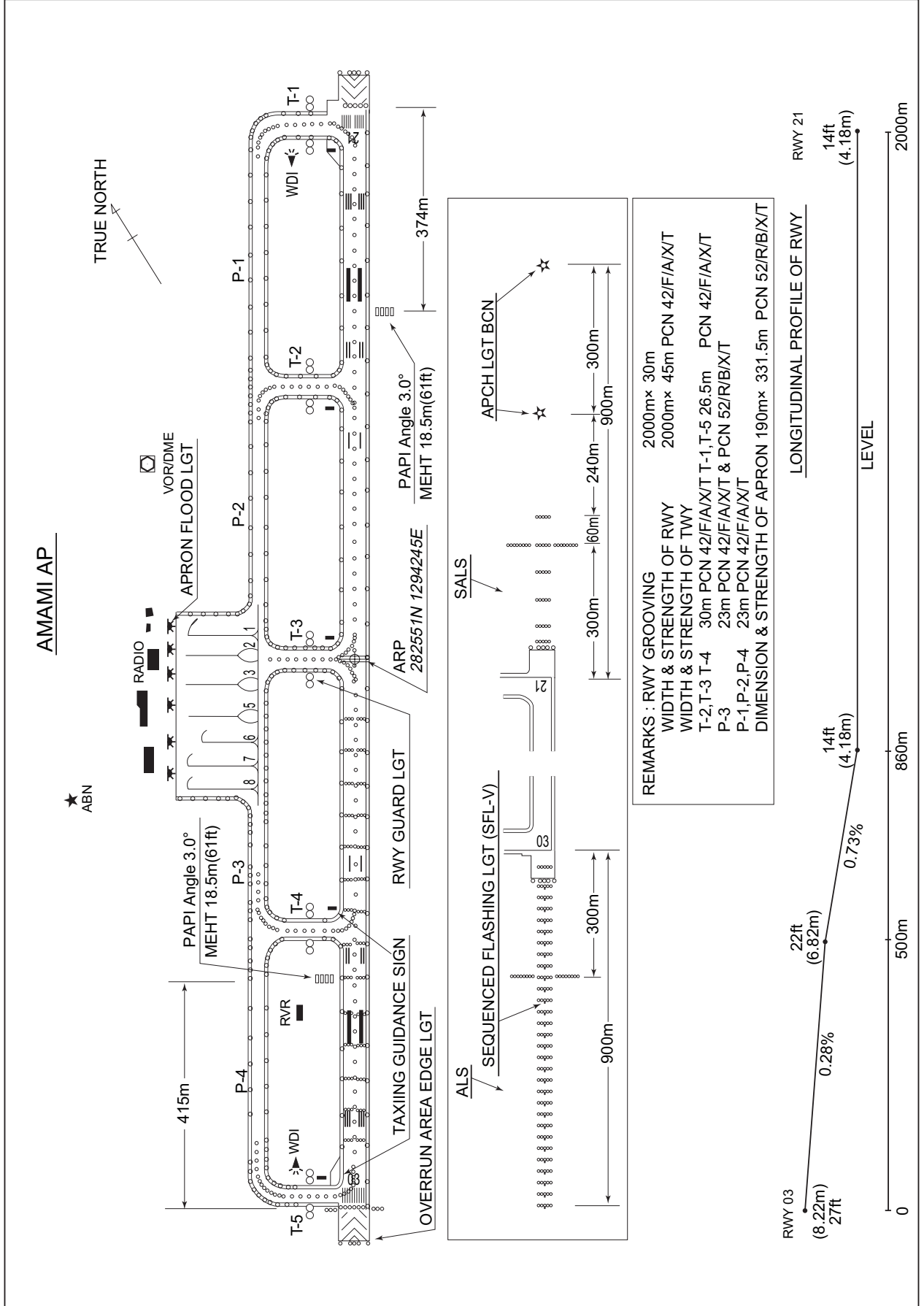
RJKA AD 2.24 CHARTS RELATED TO AN AERODROME

Aerodrome/Heliport Chart
 Standard Departure Chart - Instrument (RURIK-RNAV)
 Standard Departure Chart - Instrument (USAGI EAST-RNAV)
 Standard Departure Chart - Instrument (YUWAN-RNAV)
 Standard Departure Chart - Instrument (MUCHA-RNAV)
 Standard Departure Chart - Instrument (IKEJI-RNAV)
 Standard Departure Chart - Instrument (PINNE)
 Standard Departure Chart - Instrument (KASARI REVERSAL)
 Standard Arrival Chart-Instrument (KANAH SOUTH, TUMGI-RNAV)
 Standard Arrival Chart-Instrument (KANAH NORTH, YUWAN NORTH-RNAV)
 Instrument Approach Chart (ILS Z or LOC Z RWY03)
 Instrument Approach Chart (ILS Y or LOC Y RWY03)
 Instrument Approach Chart (VOR RWY03)
 Instrument Approach Chart (VOR RWY21)
 Instrument Approach Chart (RNP Z RWY03)
 Instrument Approach Chart (RNP Y RWY03(AR))
 Instrument Approach Chart (RNP Z RWY21)
 Instrument Approach Chart (RNP Y RWY21(AR))
 Other Chart (VISUAL REP)
 Other Chart (MVA CHART)

INTENTIONALLY LEFT BLANK

RJKA / AMAMI

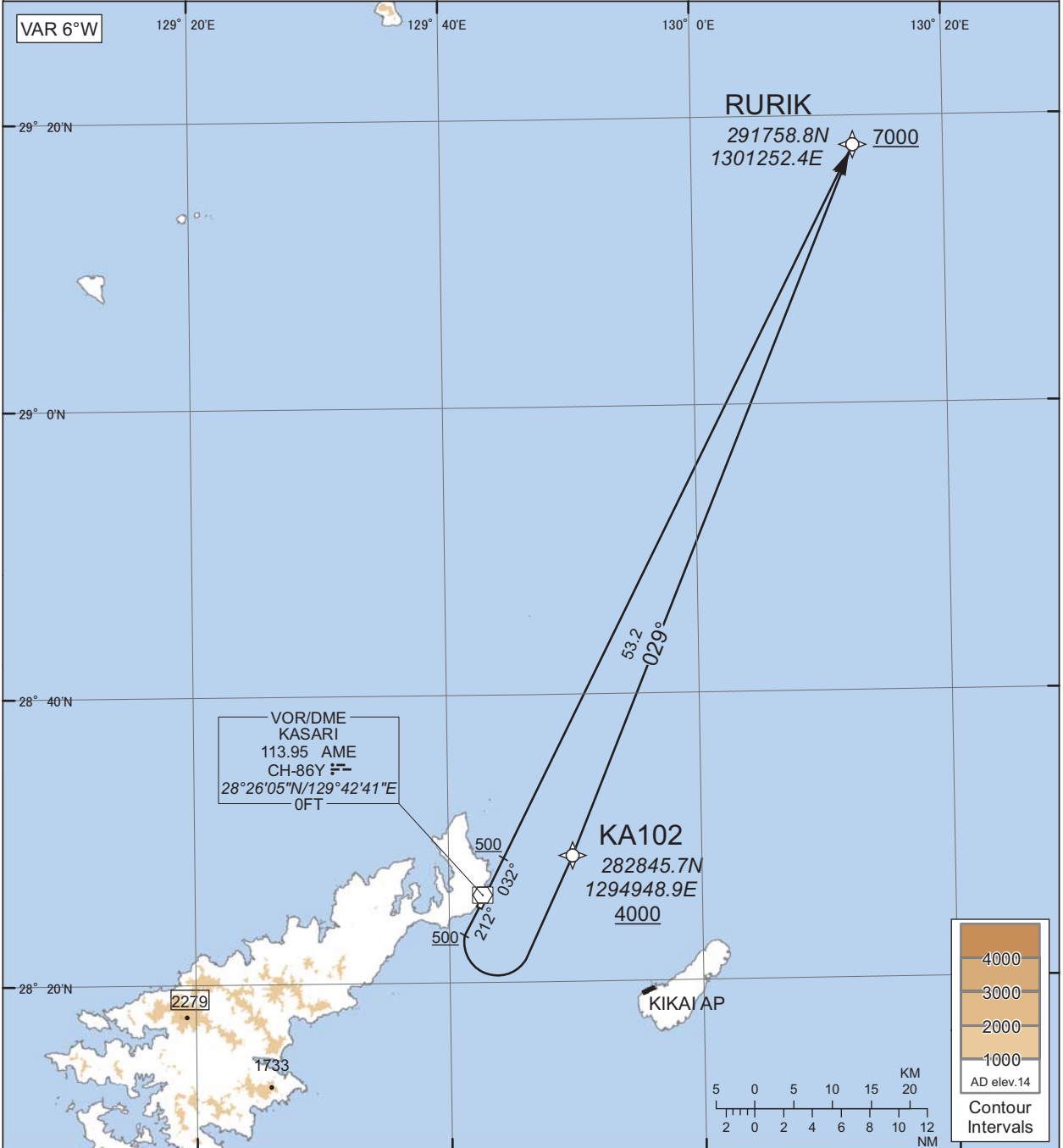
AD CHART



STANDARD DEPARTURE CHART -INSTRUMENT

| | |
|-----------------------|----------|
| RJKA / AMAMI | RNAV SID |
| RURIK THREE DEPARTURE | RNP1 |

Note GNSS required.



CHANGE : Navigation Specification(Basic RNP1→RNP1).

RWY03 : Climb on HDG032° at or above 500FT, direct to RURIK at or above 7000FT.

RWY21 : Climb on HDG212° at or above 500FT, turn left direct to KA102 at or above 4000FT, to RURIK at or above 7000FT.

Note RWY03 : 3.5% climb gradient required up to 500FT.

OBST ALT 197FT located at 1.1NM 015° FM end of RWY03.

RWY21 : 5.0% climb gradient required up to 500FT.

STANDARD DEPARTURE CHART -INSTRUMENT

RJKA / AMAMI

RNAV SID

RURIK THREE DEPARTURE

RWY03

| Serial Number | Path Descriptor | Waypoint Identifier | Fly Over | Course °M(°T) | Magnetic Variation | Distance (NM) | Turn Direction | Altitude (FT) | Speed (KIAS) | Vertical Angle | Navigation Specification |
|---------------|-----------------|---------------------|----------|----------------|--------------------|---------------|----------------|---------------|--------------|----------------|--------------------------|
| 001 | VA | - | - | 032 (025.8) | -6.4 | - | - | +500 | - | - | RNP1 |
| 002 | DF | RURIK | - | - | -6.4 | - | - | +7000 | - | - | RNP1 |

RWY21

| Serial Number | Path Descriptor | Waypoint Identifier | Fly Over | Course °M(°T) | Magnetic Variation | Distance (NM) | Turn Direction | Altitude (FT) | Speed (KIAS) | Vertical Angle | Navigation Specification |
|---------------|-----------------|---------------------|----------|----------------|--------------------|---------------|----------------|---------------|--------------|----------------|--------------------------|
| 001 | VA | - | - | 212 (205.8) | -6.4 | - | - | +500 | - | - | RNP1 |
| 002 | DF | KA102 | - | - | -6.4 | - | L | +4000 | - | - | RNP1 |
| 003 | TF | RURIK | - | 029 (022.2) | -6.4 | 53.2 | - | +7000 | - | - | RNP1 |

CHANGE : Navigation Specification(Basic RNP1 → RNP1).

STANDARD DEPARTURE CHART -INSTRUMENT

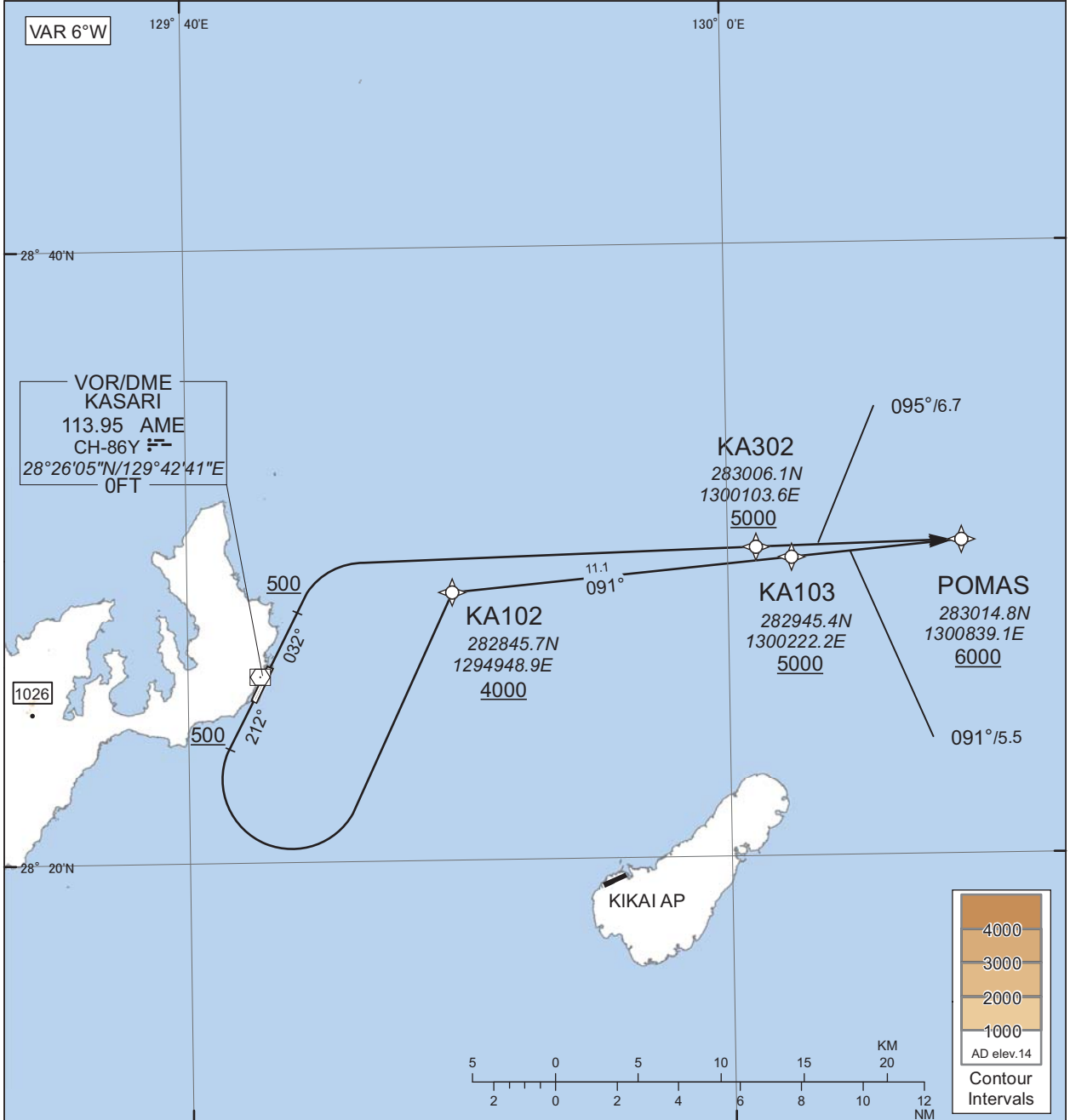
RJKA / AMAMI

RNAV SID

USAGI EAST THREE DEPARTURE

RNP1

Note GNSS required.



CHANGE : Navigation Specification(Basic RNP1→RNP1).

RWY03 : Climb on HDG032° at or above 500FT, turn right direct to KA302 at or above 5000FT, to POMAS at or above 6000FT.

RWY21 : Climb on HDG212° at or above 500FT, turn left direct to KA102 at or above 4000FT, to KA103 at or above 5000FT, to POMAS at or above 6000FT.

Note RWY03 : 3.5% climb gradient required up to 500FT.
OBST ALT 197FT located at 1.1NM 015° FM end of RWY03.
RWY21 : 5.0% climb gradient required up to 500FT.

STANDARD DEPARTURE CHART -INSTRUMENT

RJKA / AMAMI

RNAV SID

USAGI EAST THREE DEPARTURE

RWY03

| Serial Number | Path Descriptor | Waypoint Identifier | Fly Over | Course °M(°T) | Magnetic Variation | Distance (NM) | Turn Direction | Altitude (FT) | Speed (KIAS) | Vertical Angle | Navigation Specification |
|---------------|-----------------|---------------------|----------|----------------|--------------------|---------------|----------------|---------------|--------------|----------------|--------------------------|
| 001 | VA | - | - | 032 (025.8) | -6.4 | - | - | +500 | - | - | RNP1 |
| 002 | DF | KA302 | - | - | -6.4 | - | R | +5000 | - | - | RNP1 |
| 003 | TF | POMAS | - | 095 (088.7) | -6.4 | 6.7 | - | +6000 | - | - | RNP1 |

RWY21

| Serial Number | Path Descriptor | Waypoint Identifier | Fly Over | Course °M(°T) | Magnetic Variation | Distance (NM) | Turn Direction | Altitude (FT) | Speed (KIAS) | Vertical Angle | Navigation Specification |
|---------------|-----------------|---------------------|----------|----------------|--------------------|---------------|----------------|---------------|--------------|----------------|--------------------------|
| 001 | VA | - | - | 212 (205.8) | -6.4 | - | - | +500 | - | - | RNP1 |
| 002 | DF | KA102 | - | - | -6.4 | - | L | +4000 | - | - | RNP1 |
| 003 | TF | KA103 | - | 091 (084.8) | -6.4 | 11.1 | - | +5000 | - | - | RNP1 |
| 004 | TF | POMAS | - | 091 (084.9) | -6.4 | 5.5 | - | +6000 | - | - | RNP1 |

CHANGE : Navigation Specification(Basic RNP1 → RNP1).

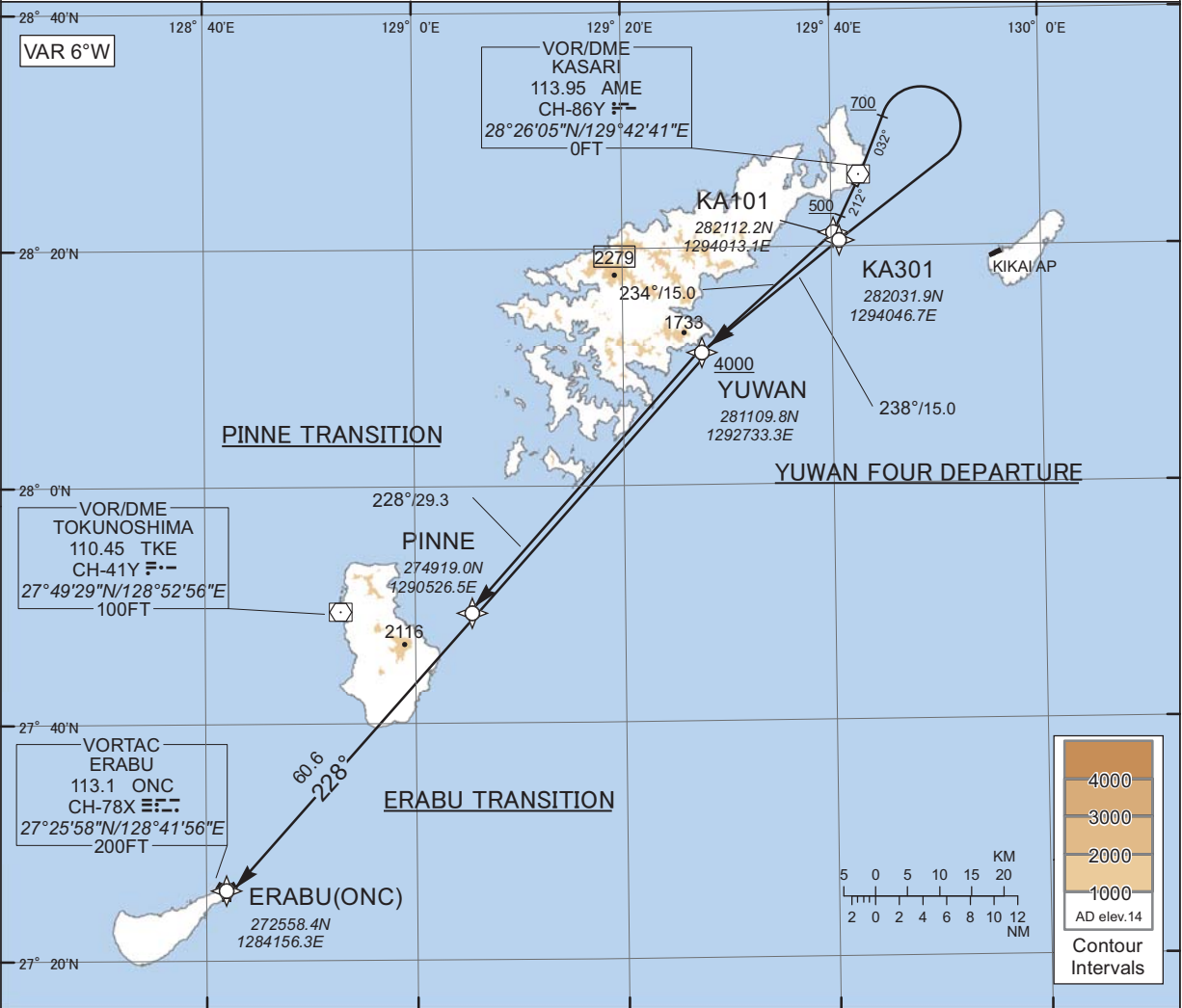
STANDARD DEPARTURE CHART -INSTRUMENT

RJKA / AMAMI

RNAV SID and TRANSITION

| | |
|---|-------------|
| <p>YUWAN FOUR DEPARTURE PINNE TRANSITION ERABU TRANSITION</p> | <p>RNP1</p> |
|---|-------------|

Note GNSS required.



CHANGE : Navigation Specification(Basic RNP1 →RNP1).

YUWAN FOUR DEPARTURE

RWY03 : Climb on HDG032° at or above 700FT, turn right direct to KA301, to YUWAN at or above 4000FT.

RWY21 : Climb on HDG212° at or above 500FT, direct to KA101, to YUWAN at or above 4000FT.

Note RWY03 : 3.5% climb gradient required up to 700FT.

OBST ALT 197FT located at 1.1NM 015° FM end of RWY03.

PINNE TRANSITION

From YUWAN at or above 4000FT, to PINNE.

ERABU TRANSITION

From YUWAN at or above 4000FT, to ONC.

STANDARD DEPARTURE CHART -INSTRUMENT

RJKA / AMAMI

RNAV SID and TRANSITION

YUWAN FOUR DEPARTURE

RWY03

| Serial Number | Path Descriptor | Waypoint Identifier | Fly Over | Course °M(°T) | Magnetic Variation | Distance (NM) | Turn Direction | Altitude (FT) | Speed (KIAS) | Vertical Angle | Navigation Specification |
|---------------|-----------------|---------------------|----------|----------------|--------------------|---------------|----------------|---------------|--------------|----------------|--------------------------|
| 001 | VA | - | - | 032 (025.8) | -6.4 | - | - | +700 | - | - | RNP1 |
| 002 | DF | KA301 | - | - | -6.4 | - | R | - | - | - | RNP1 |
| 003 | TF | YUWAN | - | 238 (231.2) | -6.4 | 15.0 | - | +4000 | - | - | RNP1 |

RWY21

| Serial Number | Path Descriptor | Waypoint Identifier | Fly Over | Course °M(°T) | Magnetic Variation | Distance (NM) | Turn Direction | Altitude (FT) | Speed (KIAS) | Vertical Angle | Navigation Specification |
|---------------|-----------------|---------------------|----------|----------------|--------------------|---------------|----------------|---------------|--------------|----------------|--------------------------|
| 001 | VA | - | - | 212 (205.8) | -6.4 | - | - | +500 | - | - | RNP1 |
| 002 | DF | KA101 | - | - | -6.4 | - | - | - | - | - | RNP1 |
| 003 | TF | YUWAN | - | 234 (228.1) | -6.4 | 15.0 | - | +4000 | - | - | RNP1 |

PINNE TRANSITION

| Serial Number | Path Descriptor | Waypoint Identifier | Fly Over | Course °M(°T) | Magnetic Variation | Distance (NM) | Turn Direction | Altitude (FT) | Speed (KIAS) | Vertical Angle | Navigation Specification |
|---------------|-----------------|---------------------|----------|----------------|--------------------|---------------|----------------|---------------|--------------|----------------|--------------------------|
| 001 | IF | YUWAN | - | - | -6.4 | - | - | +4000 | - | - | RNP1 |
| 002 | TF | PINNE | - | 228 (221.9) | -6.4 | 29.3 | - | - | - | - | RNP1 |

ERABU TRANSITION

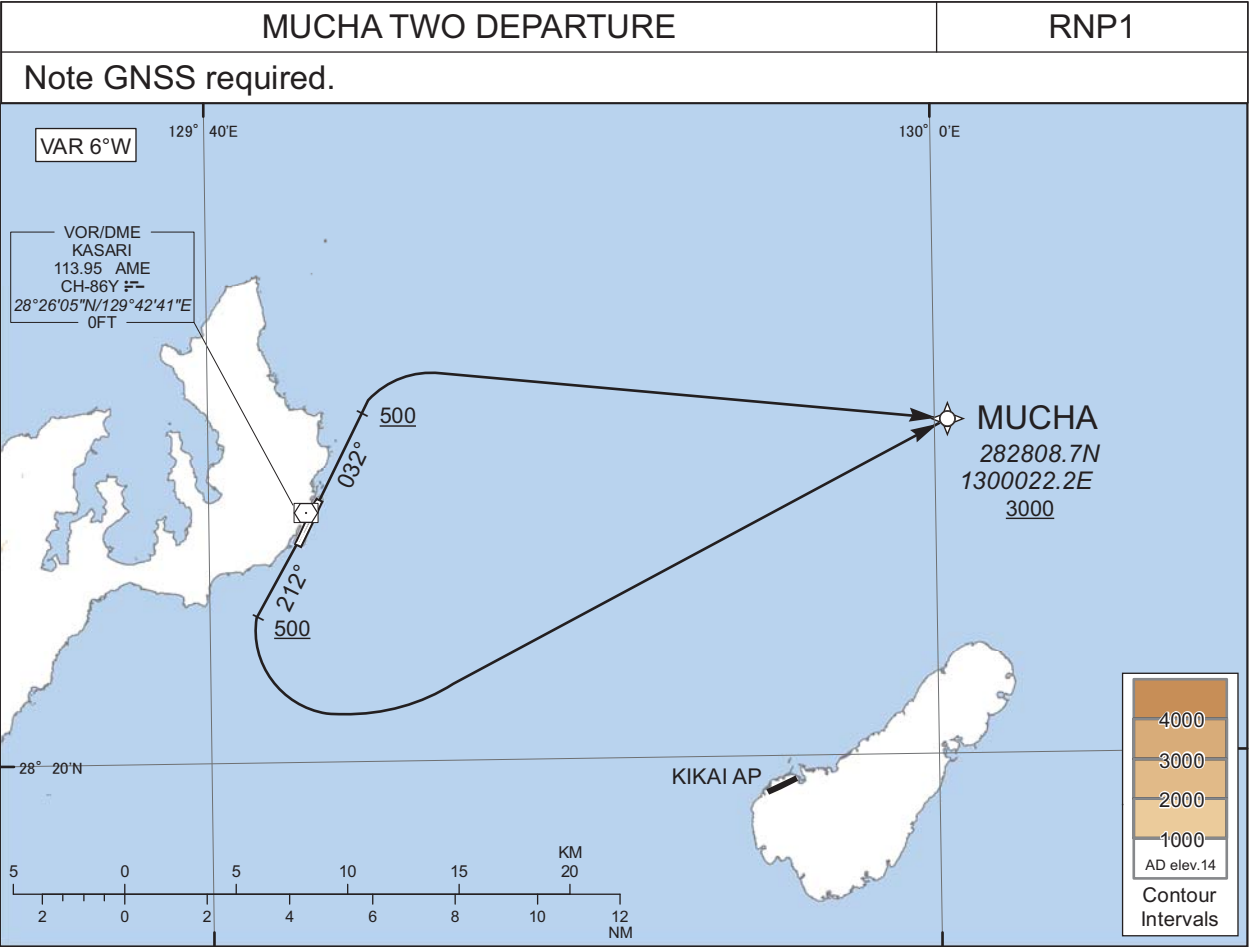
| Serial Number | Path Descriptor | Waypoint Identifier | Fly Over | Course °M(°T) | Magnetic Variation | Distance (NM) | Turn Direction | Altitude (FT) | Speed (KIAS) | Vertical Angle | Navigation Specification |
|---------------|-----------------|---------------------|----------|----------------|--------------------|---------------|----------------|---------------|--------------|----------------|--------------------------|
| 001 | IF | YUWAN | - | - | -6.4 | - | - | +4000 | - | - | RNP1 |
| 002 | TF | ONC | - | 228 (221.9) | -6.4 | 60.6 | - | - | - | - | RNP1 |

CHANGE : Navigation Specification(Basic RNP1 → RNP1).

STANDARD DEPARTURE CHART -INSTRUMENT

RJKA / AMAMI

RNAV SID



RWY03 : Climb on HDG032° at or above 500FT, turn right direct to MUCHA at or above 3000FT.

RWY21 : Climb on HDG212° at or above 500FT, turn left direct to MUCHA at or above 3000FT.

Note RWY03 : 3.5% climb gradient required up to 500FT.
OBST ALT 197FT located at 1.1NM 015° FM end of RWY03.

CHANGE : Navigation Specification(Basic RNP1 → RNP1).

RWY03

| Serial Number | Path Descriptor | Waypoint Identifier | Fly Over | Course °M(°T) | Magnetic Variation | Distance (NM) | Turn Direction | Altitude (FT) | Speed (KIAS) | Vertical Angle | Navigation Specification |
|---------------|-----------------|---------------------|----------|----------------|--------------------|---------------|----------------|---------------|--------------|----------------|--------------------------|
| 001 | VA | - | - | 032 (025.8) | -6.4 | - | - | +500 | - | - | RNP1 |
| 002 | DF | MUCHA | - | - | -6.4 | - | R | +3000 | - | - | RNP1 |

RWY21

| Serial Number | Path Descriptor | Waypoint Identifier | Fly Over | Course °M(°T) | Magnetic Variation | Distance (NM) | Turn Direction | Altitude (FT) | Speed (KIAS) | Vertical Angle | Navigation Specification |
|---------------|-----------------|---------------------|----------|----------------|--------------------|---------------|----------------|---------------|--------------|----------------|--------------------------|
| 001 | VA | - | - | 212 (205.8) | -6.4 | - | - | +500 | - | - | RNP1 |
| 002 | DF | MUCHA | - | - | -6.4 | - | L | +3000 | - | - | RNP1 |

STANDARD DEPARTURE CHART -INSTRUMENT

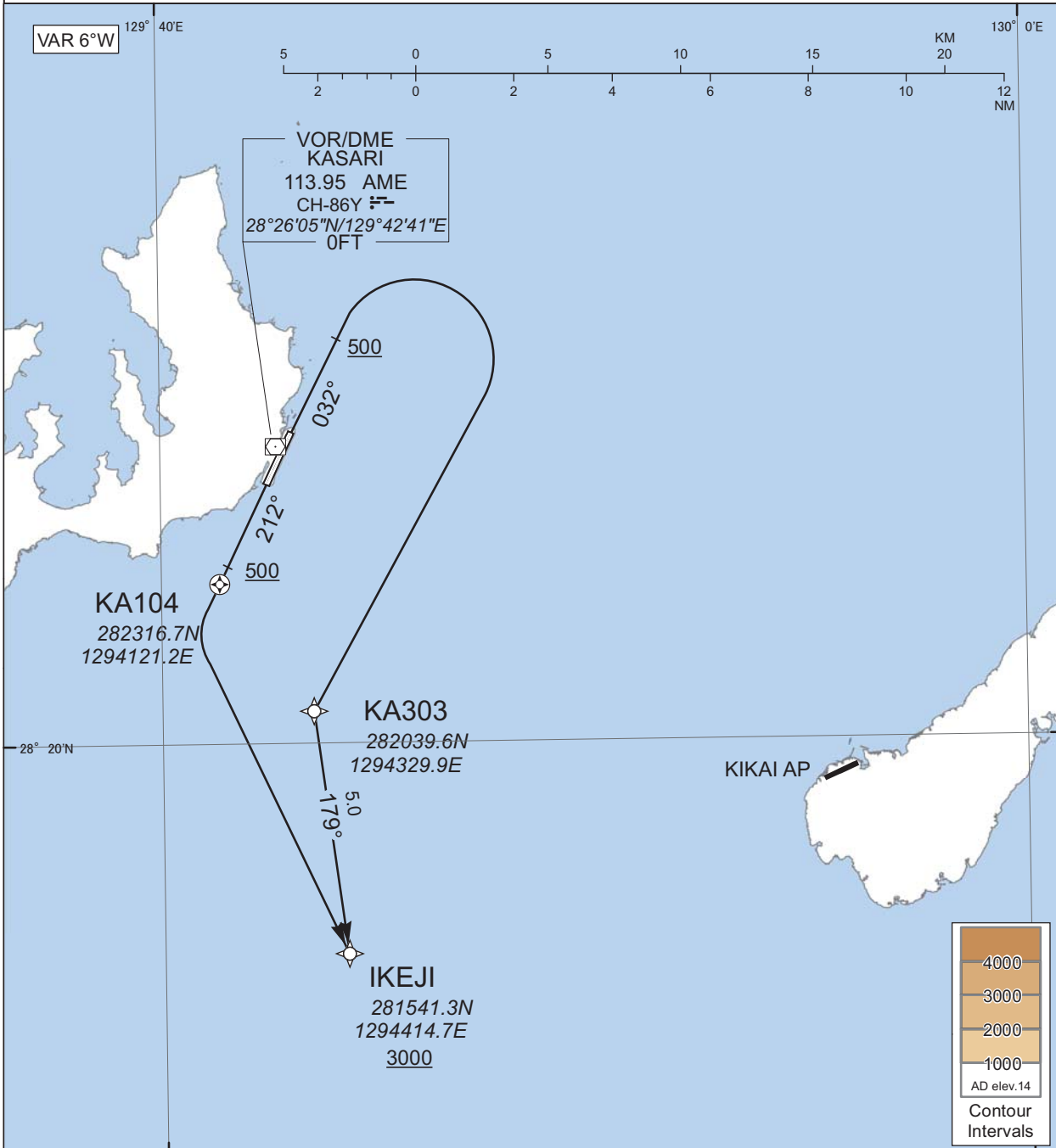
RJKA / AMAMI

RNAV SID

IKEJI ONE DEPARTURE

RNP1

Note GNSS required.



CHANGE : Navigation Specification(Basic RNP1 →RNP1).

RWY03 : Climb on HDG032° at or above 500FT, turn right direct to KA303, to IKEJI at or above 3000FT.

RWY21 : Climb on HDG212° at or above 500FT, direct to KA104, turn left direct to IKEJI at or above 3000FT.

Note RWY03 : 5.0% climb gradient required up to 500FT.
RWY21 : 5.0% climb gradient required up to 500FT.

STANDARD DEPARTURE CHART -INSTRUMENT

RJKA / AMAMI

RNAV SID

IKEJI ONE DEPARTURE

RWY03

| Serial Number | Path Descriptor | Waypoint Identifier | Fly Over | Course °M(°T) | Magnetic Variation | Distance (NM) | Turn Direction | Altitude (FT) | Speed (KIAS) | Vertical Angle | Navigation Specification |
|---------------|-----------------|---------------------|----------|----------------|--------------------|---------------|----------------|---------------|--------------|----------------|--------------------------|
| 001 | VA | - | - | 032 (025.8) | -6.4 | - | - | +500 | - | - | RNP1 |
| 002 | DF | KA303 | - | - | -6.4 | - | R | - | - | - | RNP1 |
| 003 | TF | IKEJI | - | 179 (172.5) | -6.4 | 5.0 | - | +3000 | - | - | RNP1 |

RWY21

| Serial Number | Path Descriptor | Waypoint Identifier | Fly Over | Course °M(°T) | Magnetic Variation | Distance (NM) | Turn Direction | Altitude (FT) | Speed (KIAS) | Vertical Angle | Navigation Specification |
|---------------|-----------------|---------------------|----------|----------------|--------------------|---------------|----------------|---------------|--------------|----------------|--------------------------|
| 001 | VA | - | - | 212 (205.8) | -6.4 | - | - | +500 | - | - | RNP1 |
| 002 | DF | KA104 | Y | - | -6.4 | - | - | - | - | - | RNP1 |
| 003 | DF | IKEJI | - | - | -6.4 | - | L | +3000 | - | - | RNP1 |

CHANGE : Navigation Specification(Basic RNP1 → RNP1).

STANDARD DEPARTURE CHART -INSTRUMENT

RJKA / AMAMI

SID

PINNE SIX DEPARTURE

RWY 03 : Climb RWY HDG to 700FT, turn right HDG273° to intercept and proceed...

RWY 21 : Climb RWY HDG to AME 3.0DME, turn right,...

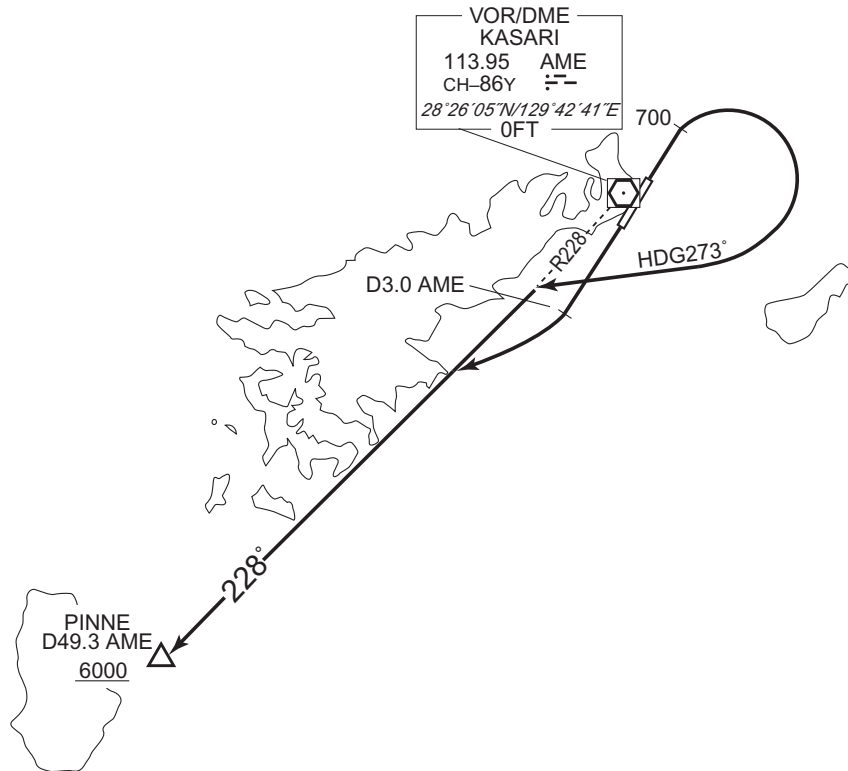
... via AME R228 to PINNE.

Cross PINNE at or above 6000FT.

NOTE RWY03 : 3.5% climb gradient required up to 700FT.

OBST ALT 197FT located at 1.1NM 015° FM end of RWY03.

CHANGE : PROC renamed(PINNE SIX DEPARTURE). Note added. ERABU FOUR DEPARTURE abolished.



STANDARD DEPARTURE CHART -INSTRUMENT

RJKA / AMAMI

SID

CHANGE : PROC renamed(KASARI REVERSAL THREE DEPARTURE). Note added. POMAS FOUR DEPARTURE abolished.

KASARI REVERSAL THREE DEPARTURE

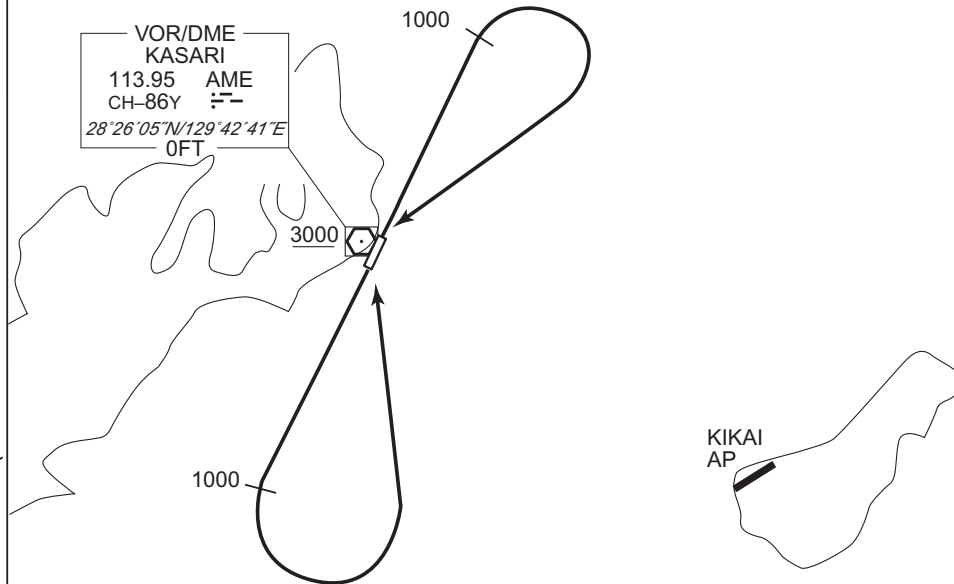
RWY03 : Climb RWY HDG to 1000FT,turn right,...

RWY21 : Climb RWY HDG to 1000FT,turn left,...

...direct to AME VOR/DME. Cross AME VOR/DME at or above 3000FT.

NOTE RWY03 : 3.5% climb gradient required up to 1000FT.

OBST ALT 197FT located at 1.1NM 015° FM end of RWY03.



INTENTIONALLY LEFT BLANK

STANDARD ARRIVAL CHART-INSTRUMENT

RJKA / AMAMI

RNAV STAR RWY03

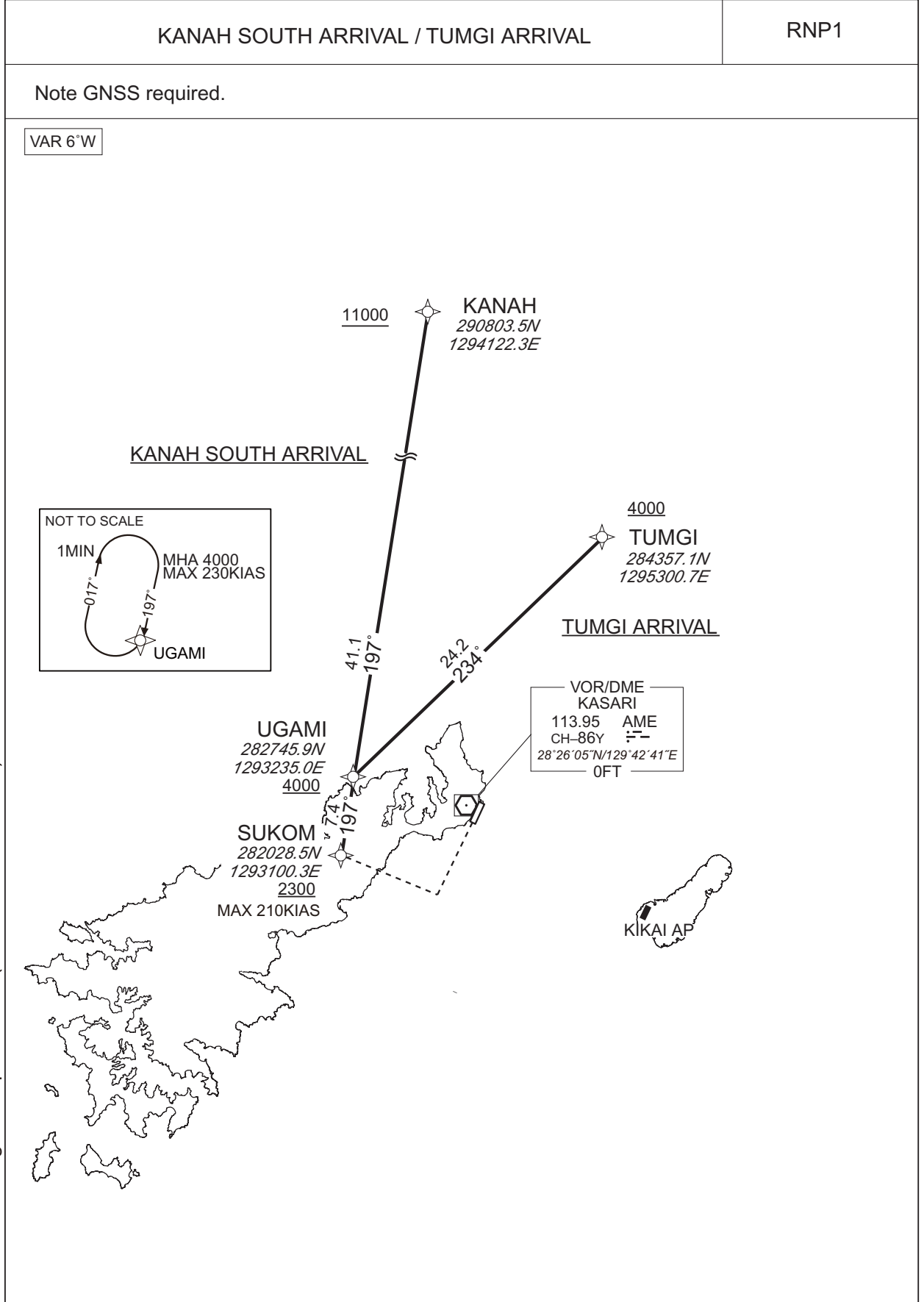
KANAH SOUTH ARRIVAL / TUMGI ARRIVAL

RNP1

Note GNSS required.

VAR 6°W

CHANGE : Navigation Specification(Basic RNP1 → RNP1).



STANDARD ARRIVAL CHART-INSTRUMENT

RJKA / AMAMI

RNAV STAR RWY03

KANAH SOUTH ARRIVAL

From KANAH at or above 11000FT, to UGAMI at or above 4000FT, to SUKOM at or above 2300FT.

| Serial Number | Path Descriptor | Waypoint Identifier | Fly Over | Course °M(°T) | Magnetic Variation | Distance (NM) | Turn Direction | Altitude (FT) | Speed (KIAS) | Vertical Angle | Navigation Specification |
|---------------|-----------------|---------------------|----------|----------------|--------------------|---------------|----------------|---------------|--------------|----------------|--------------------------|
| 001 | IF | KANAH | - | - | -6.3 | - | - | +11000 | - | - | RNP1 |
| 002 | TF | UGAMI | - | 197 (190.9) | -6.3 | 41.1 | - | +4000 | - | - | RNP1 |
| 003 | TF | SUKOM | - | 197 (190.8) | -6.3 | 7.4 | - | +2300 | -210 | - | RNP1 |

TUMGI ARRIVAL

From TUMGI at or above 4000FT, to UGAMI at or above 4000FT, to SUKOM at or above 2300FT.

| Serial Number | Path Descriptor | Waypoint Identifier | Fly Over | Course °M(°T) | Magnetic Variation | Distance (NM) | Turn Direction | Altitude (FT) | Speed (KIAS) | Vertical Angle | Navigation Specification |
|---------------|-----------------|---------------------|----------|----------------|--------------------|---------------|----------------|---------------|--------------|----------------|--------------------------|
| 001 | IF | TUMGI | - | - | -6.3 | - | - | +4000 | - | - | RNP1 |
| 002 | TF | UGAMI | - | 234 (228.0) | -6.3 | 24.2 | - | +4000 | - | - | RNP1 |
| 003 | TF | SUKOM | - | 197 (190.8) | -6.3 | 7.4 | - | +2300 | -210 | - | RNP1 |

| Path | Waypoint Identifier | Inbound Course °M(°T) | Magnetic Variation | Outbound Time (MIN) | Turn Direction | Minimum Altitude (FT) | Maximum Altitude (FT) | Speed (KIAS) | Navigation Specification |
|------|---------------------|-----------------------|--------------------|---------------------|----------------|-----------------------|-----------------------|------------------|--------------------------|
| Hold | UGAMI | 197 (190.8) | -6.3 | 1.0 (-14000) | R | 4000 | FL140 | -230 (-14000) | RNP1 |

CHANGE : Navigation Specification(Basic RNP1 → RNP1).

STANDARD ARRIVAL CHART-INSTRUMENT

RJKA / AMAMI

RNAV STAR RWY21

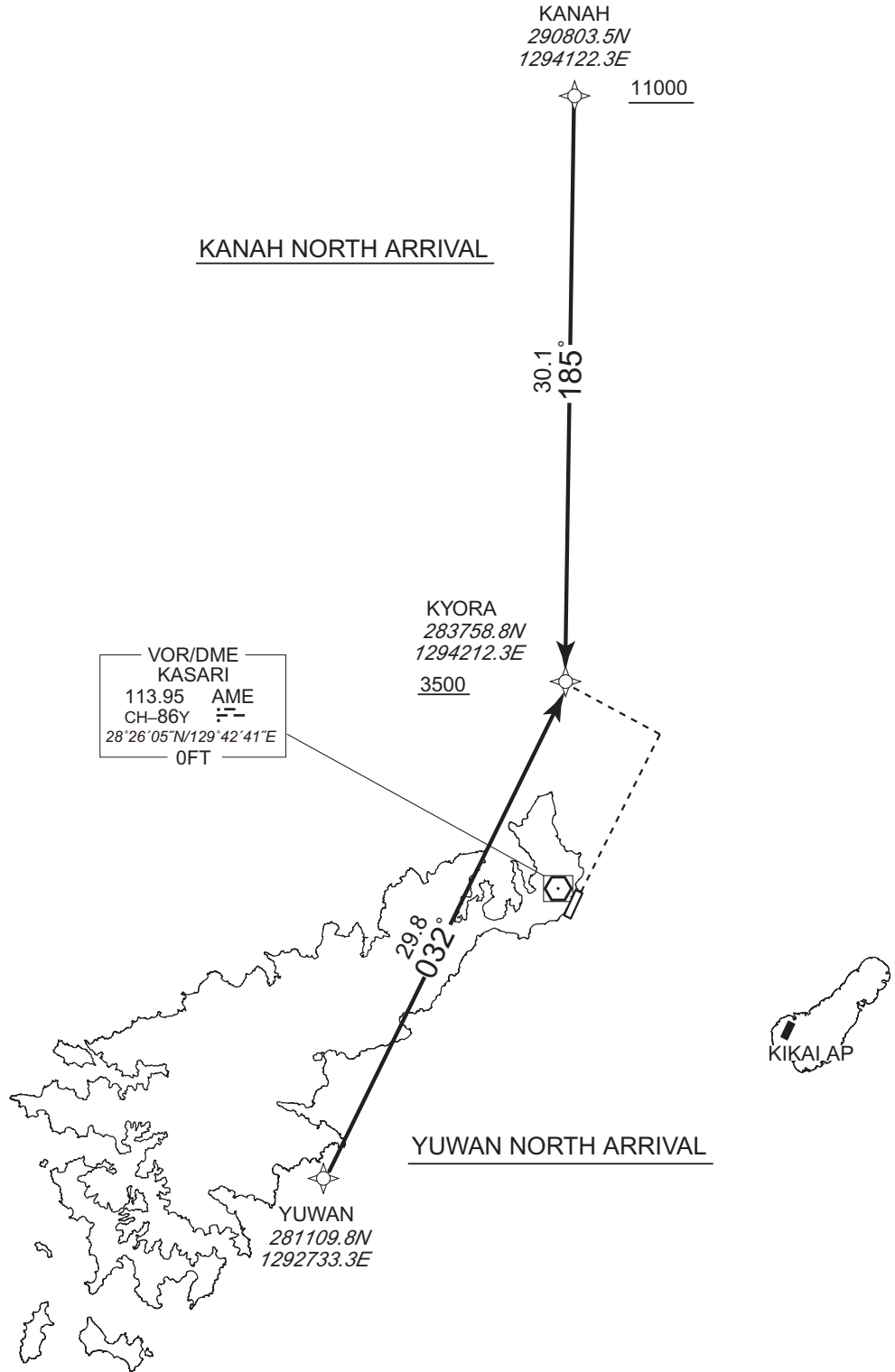
KANAH NORTH ARRIVAL
YUWAN NORTH ARRIVAL

RNP1

Note GNSS required.

VAR 6°W

CHANGE : Navigation Specification(Basic RNP1 → RNP1).



STANDARD ARRIVAL CHART-INSTRUMENT

RJKA / AMAMI

RNAV STAR RWY21

KANAH NORTH ARRIVAL

From KANAH at or above 11000FT, to KYORA at or above 3500FT.

| Serial Number | Path Descriptor | Waypoint Identifier | Fly Over | Course °M(°T) | Magnetic Variation | Distance (NM) | Turn Direction | Altitude (FT) | Speed (KIAS) | Vertical Angle | Navigation Specification |
|---------------|-----------------|---------------------|----------|----------------|--------------------|---------------|----------------|---------------|--------------|----------------|--------------------------|
| 001 | IF | KANAH | - | - | -6.2 | - | - | +11000 | - | - | RNP1 |
| 002 | TF | KYORA | - | 185 (178.6) | -6.2 | 30.1 | - | +3500 | - | - | RNP1 |

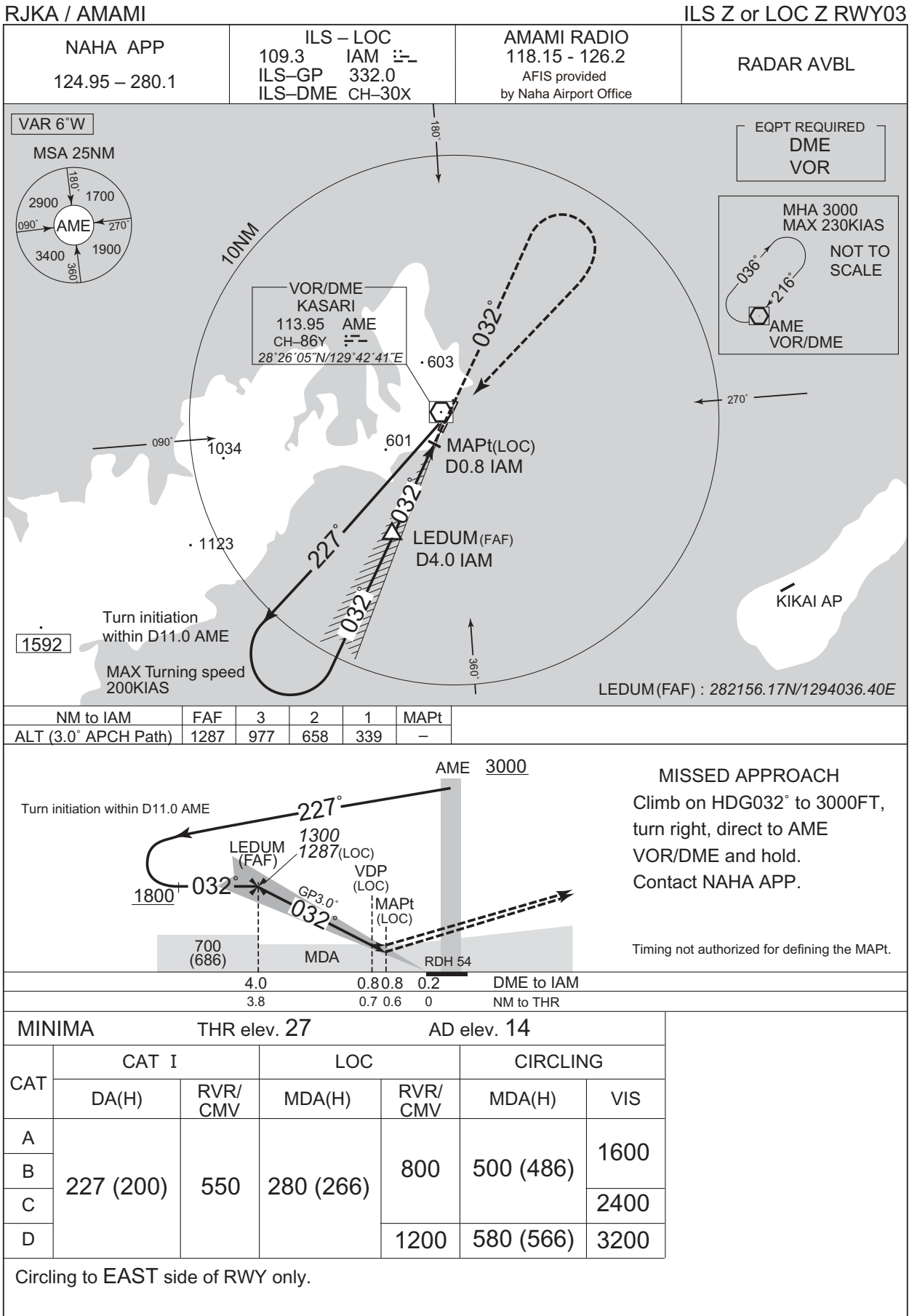
YUWAN NORTH ARRIVAL

From YUWAN, to KYORA at or above 3500FT.

| Serial Number | Path Descriptor | Waypoint Identifier | Fly Over | Course °M(°T) | Magnetic Variation | Distance (NM) | Turn Direction | Altitude (FT) | Speed (KIAS) | Vertical Angle | Navigation Specification |
|---------------|-----------------|---------------------|----------|----------------|--------------------|---------------|----------------|---------------|--------------|----------------|--------------------------|
| 001 | IF | YUWAN | - | - | -6.2 | - | - | - | - | - | RNP1 |
| 002 | TF | KYORA | - | 032 (025.6) | -6.2 | 29.8 | - | +3500 | - | - | RNP1 |

CHANGE : Navigation Specification(Basic RNP1 → RNP1).

INSTRUMENT APPROACH CHART

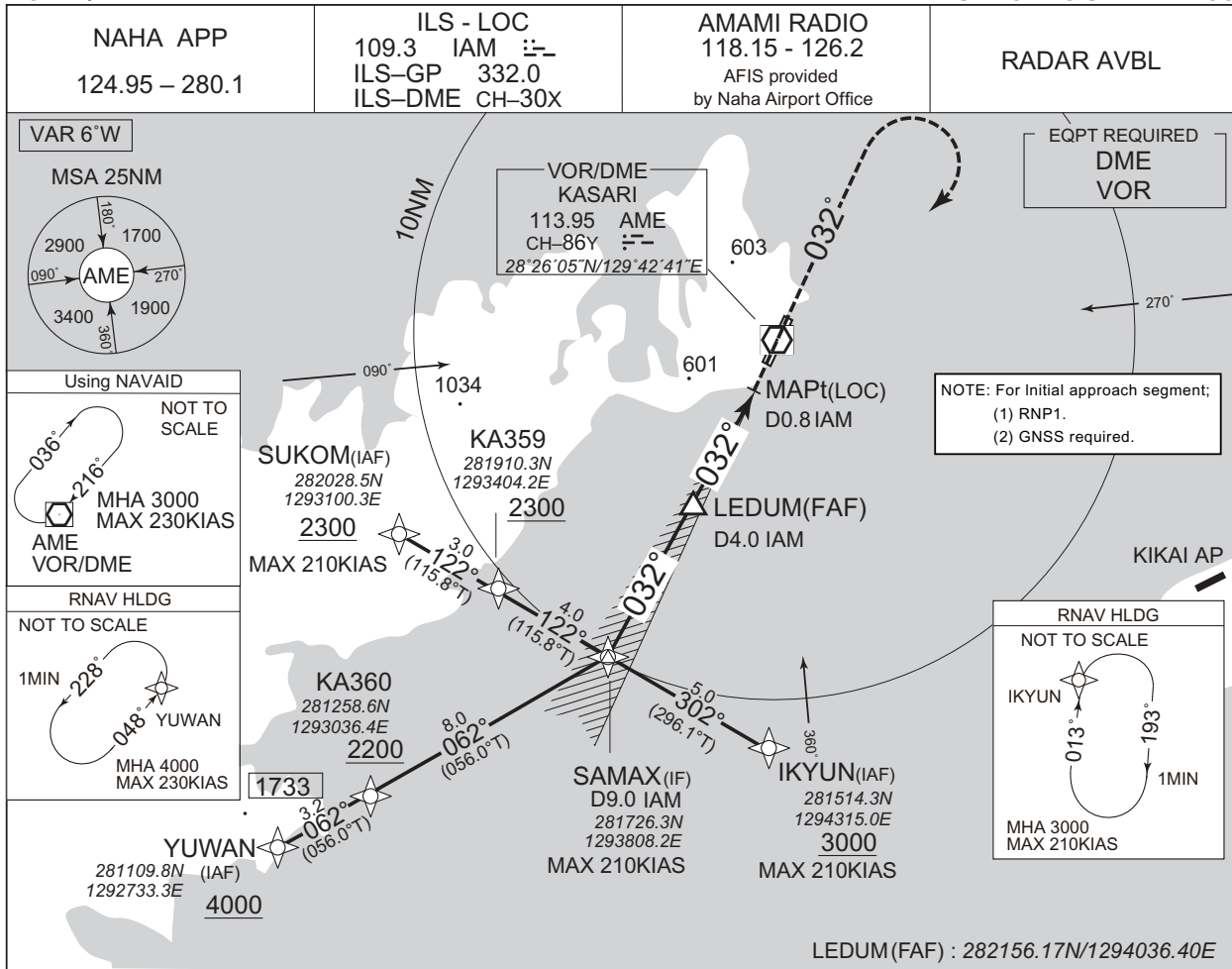


CHANGE : Description of RADAR Service. Missed APCH PROC.

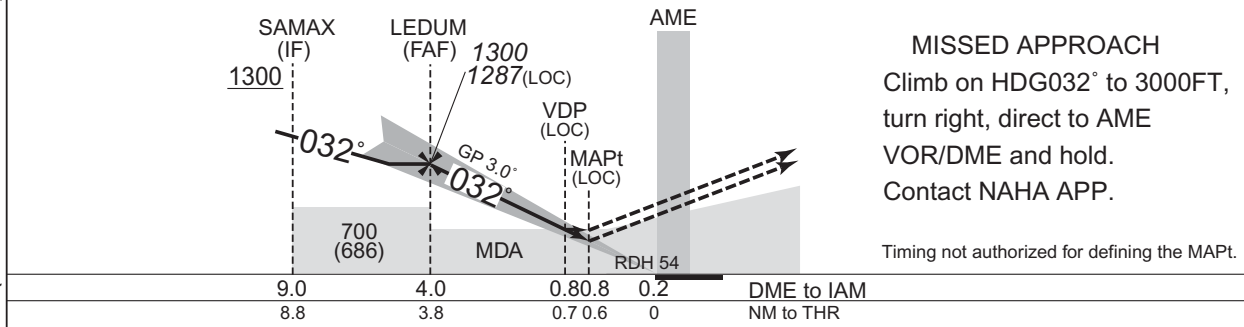
INSTRUMENT APPROACH CHART

RJKA / AMAMI

ILS Y or LOC Y RWY03



| | | | | | |
|----------------------|------|-----|-----|-----|------|
| NM to IAM | FAF | 3 | 2 | 1 | MAPt |
| ALT (3.0° APCH Path) | 1287 | 977 | 658 | 339 | - |

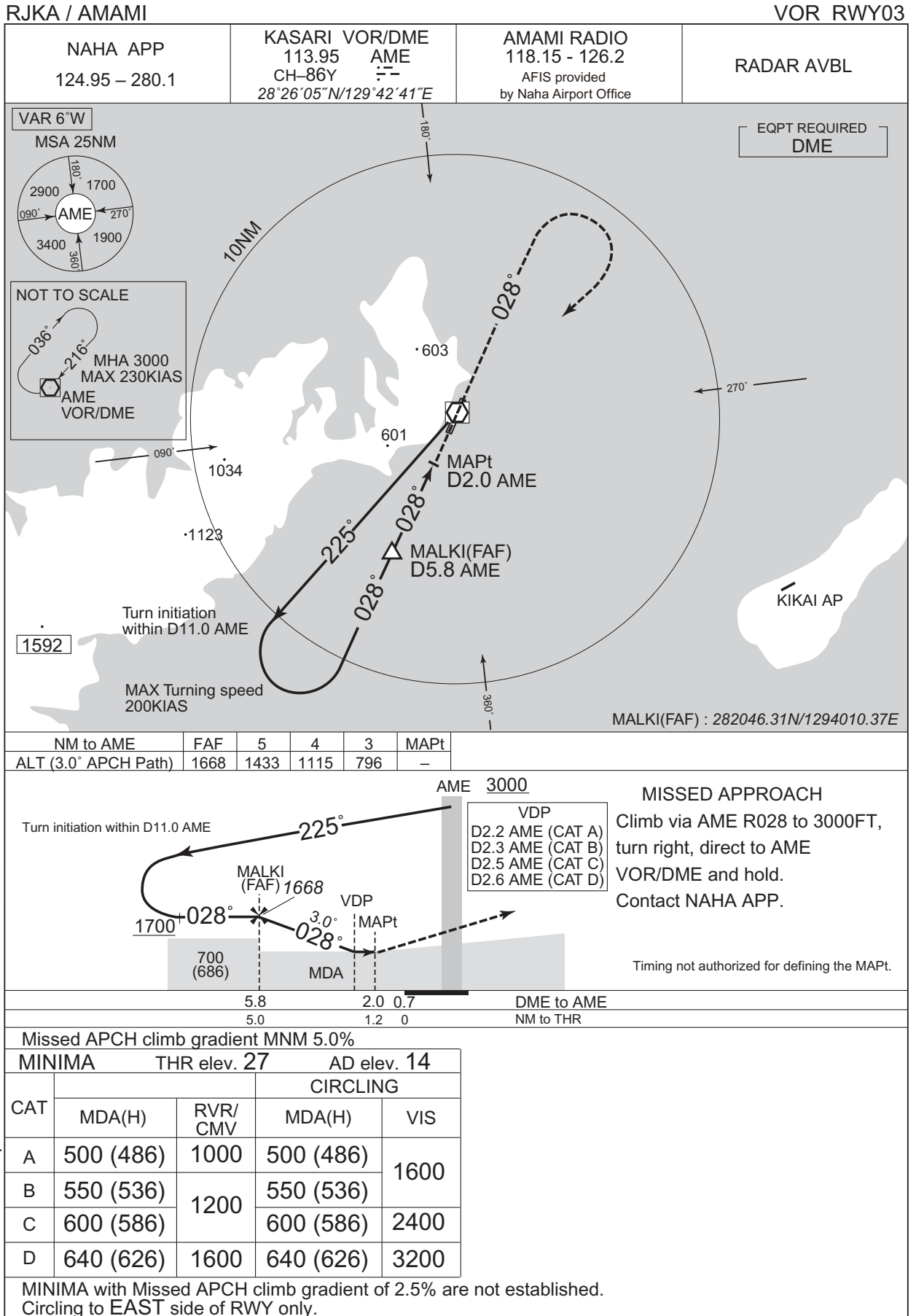


| | | | | | | |
|---------------|--------------|---------------------|---------------|--------------------|-----------------|------------|
| MINIMA | | THR elev. 27 | | AD elev. 14 | | |
| CAT | CAT I | | LOC | | CIRCLING | |
| | DA(H) | RVR/CMV | MDA(H) | RVR/CMV | MDA(H) | VIS |
| A | 227 (200) | 550 | 280 (266) | 800 | 500 (486) | 1600 |
| B | | | | | | 2400 |
| C | | | | | | 3200 |
| D | | | | | | |

Circling to EAST side of RWY only.

CHANGE : Navigation Specification(Basic RNP1 → RNP1).

INSTRUMENT APPROACH CHART

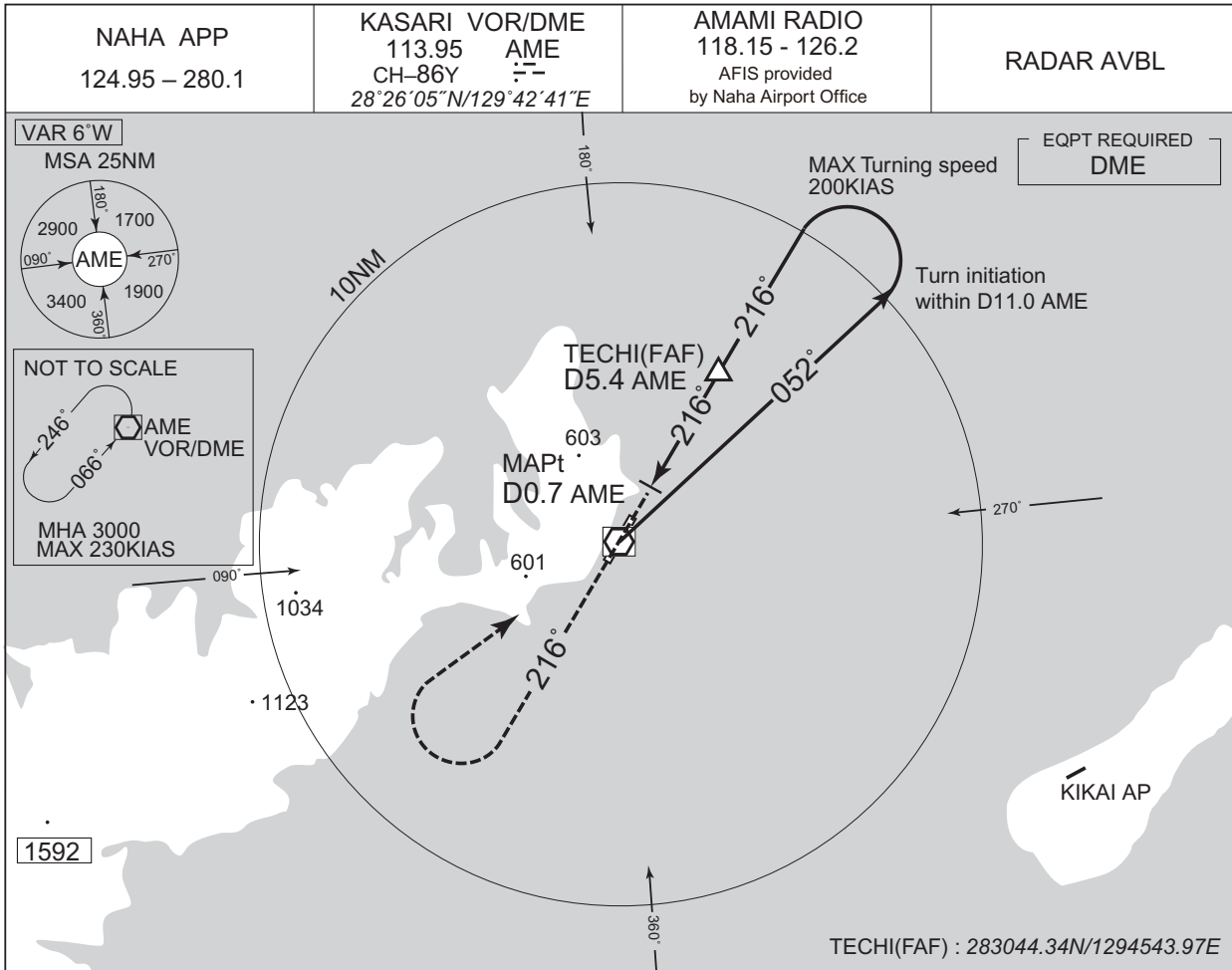


CHANGE : Description of RADAR Service. Missed APCH PROC.

INSTRUMENT APPROACH CHART

RJKA / AMAMI

VOR RWY21



CHANGE : Description of RADAR Service. Missed APCH PROC.

| | |
|--|--|
| <p>MISSED APPROACH</p> <p>Climb via AME R216 to 3000FT, turn right, direct to AME</p> <p>VOR/DME and hold.</p> <p>Contact NAHA APP.</p> <p>Timing not authorized for defining the MAPt.</p> | <p style="text-align: center;">AME 3000</p> |
|--|--|

| | |
|------------|-------------|
| DME to AME | 0.4 0.7 5.4 |
| NM to THR | 0 0.3 5.0 |

Missed APCH climb gradient MNM 5.0%

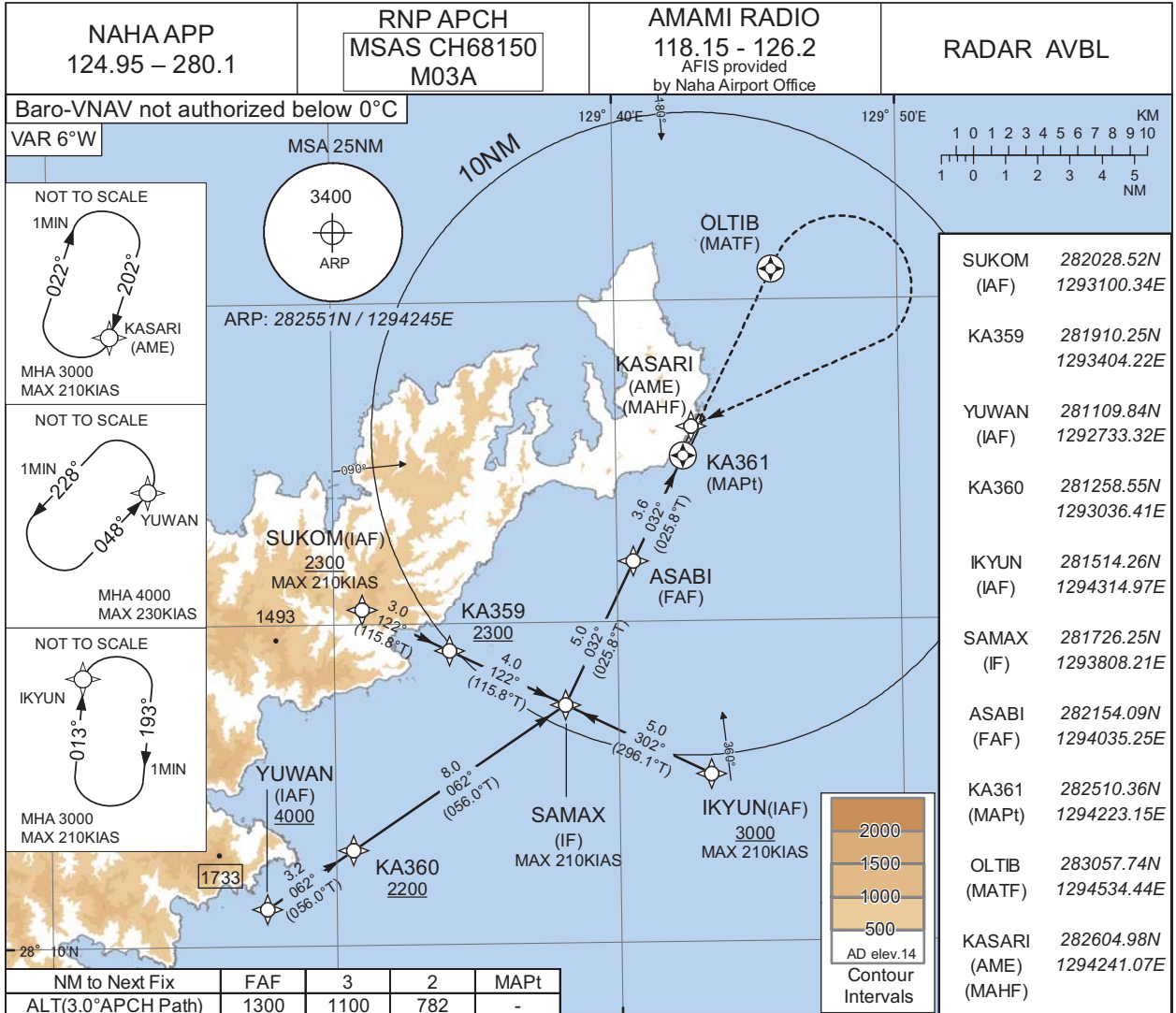
| MINIMA | | THR elev. 14 | AD elev. 14 | |
|--------|-----------|--------------|-------------|------|
| CAT | MDA(H) | CMV | CIRCLING | |
| A | 530 (516) | 1500 | 530 (516) | 1600 |
| B | 580 (566) | | 580 (566) | |
| C | 630 (616) | 1800 | 630 (616) | 2400 |
| D | 660 (646) | 2000 | 660 (646) | 3200 |

MINIMA with Missed APCH climb gradient of 2.5% are not established.
Circling to EAST side of RWY only.

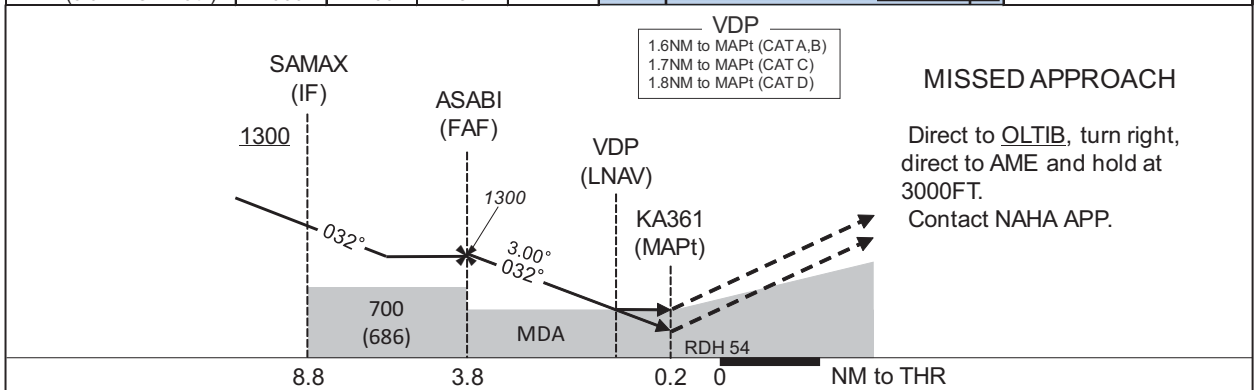
INSTRUMENT APPROACH CHART

RJKA / AMAMI

RNP Z RWY03



CHANGE : Description of RADAR Service. Missed APCH PROC.



Missed APCH climb gradient MNM 5.0%

| CAT | LPV | | LNAV/VNAV | | LNAV | | CIRCLING | |
|-----|----------|---------|-----------|---------|----------|---------|----------|----------|
| | DA(H) | RVR/CMV | DA(H) | RVR/CMV | MDA(H) | RVR/CMV | MDA(H) | VIS |
| A | 277(250) | 800 | 600(573) | 1000 | 600(586) | 1000 | 600(586) | 1600 |
| B | | | | 1200 | | 1200 | | |
| C | 282(255) | 1200 | 640(613) | 1600 | 640(626) | 1800 | 640(626) | 2400 |
| D | 292(265) | | | | 670(643) | | 670(656) | 670(656) |

MINIMA with Missed APCH climb gradient of 2.5% are not established.
Circling to EAST side of RWY only.

INSTRUMENT APPROACH CHART

RJKA / AMAMI

RNP Z RWY03

FAS DATA BLOCK

| | | | |
|----------------------------------|---------------|----------------------------|---------------|
| Operation type | 0 | LTP/FTP ellipsoidal height | +00373 |
| SBAS service provider identifier | 2 | FPAP latitude | 282619.5815N |
| Airport identifier | RJKA | FPAP longitude | 1294301.2745E |
| Runway | 03 | Threshold crossing height | 00016.5 |
| Approach performance designator | 0 | TCH units selector | 1 |
| Route indicator | Z | Glide path angle | 03.00 |
| Reference path data selector | 0 | Course width at threshold | 105.00 |
| Reference path ID | M03A | ∠ length offset | 0000 |
| LTP/FTP latitude | 282521.1620N | HAL | 40.0 |
| LTP/FTP longitude | 1294229.1275E | VAL | 50.0 |
| CRC remainder | 2C1731A7 | | |

Required additional data

| | |
|----------------------------|-----|
| LTP/FTP orthometric height | 8.5 |
|----------------------------|-----|

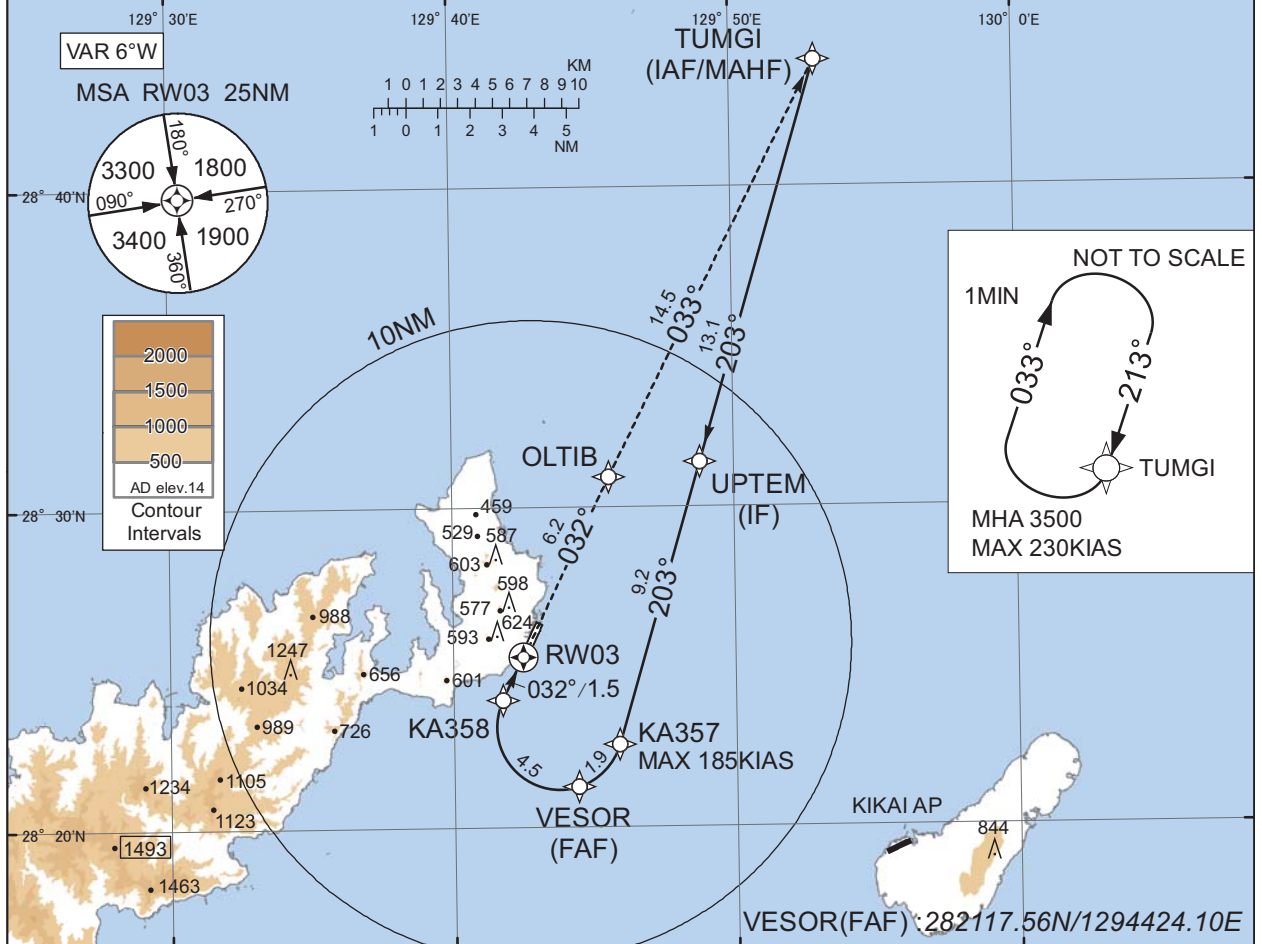
CHANGE : New PROC.

INSTRUMENT APPROACH CHART

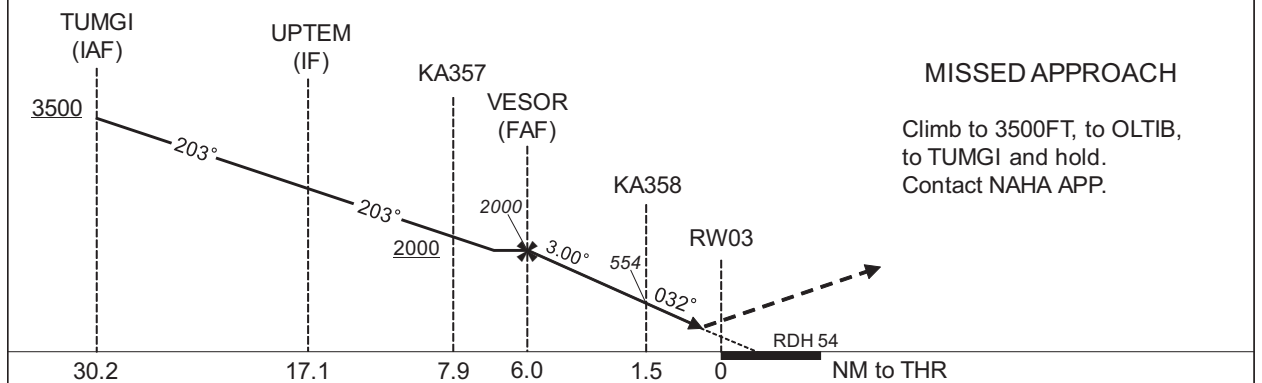
RJKA / AMAMI RNP Y RWY03(AR)

| | | | |
|----------------------------|------------------------|--|------------|
| NAHA APP 124.95 - 280.1 | RNP AR RF required. | AMAMI RADIO 118.15 - 126.2 <small>AFIS provided by Naha Airport Office</small> | RADAR AVBL |
|----------------------------|------------------------|--|------------|

For uncompensated Baro-VNAV systems, procedure not authorized below 0°C / above 45°C



CHANGE : Description of RADAR Service. Missed APCH PROC.



MISSED APPROACH

Climb to 3500FT, to OLTIB, to TUMGI and hold. Contact NAHA APP.

Missed APCH climb gradient MNM 5.0%

| CAT | THR elev. 27 | | AD elev. 14 | |
|-----|--------------|---------|-------------|---------|
| | RNP 0.13 | | RNP 0.30 | |
| | DA(H) | RVR/CMV | DA(H) | RVR/CMV |
| A | - | - | - | - |
| B | - | - | - | - |
| C | 283(256) | 800 | 381(354) | 1000 |
| D | 292(265) | 1200 | 391(364) | 1400 |

MINIMA with Missed APCH climb gradient of 2.5% are not established.

Authorization Required

INSTRUMENT APPROACH CHART

RJKA / AMAMI

RNP Y RWY03(AR)

Coding Table

| Serial Number | Path Descriptor | Waypoint Identifier | Fly Over | Course °M(°T) | Magnetic Variation | Distance (NM) | Turn Direction | Altitude (FT) | Speed (KIAS) | VPA/RDH (°/FT) | RNP Value |
|---------------|------------------------------------|---------------------|----------|---------------|--------------------|---------------|----------------|---------------|--------------|----------------|--------------|
| 001 | IF | TUMGI | - | - | -6.4 | - | - | +3500 | - | - | - |
| 002 | TF | UPTM | - | 203 (196.4) | -6.4 | 13.1 | - | - | - | - | 0.3 |
| 003 | TF | KA357 | - | 203 (196.4) | -6.4 | 9.2 | - | +2000 | -185 | - | 0.3 |
| 004 | RF Center: KARF2 r=1.95NM | VESOR | - | - | -6.4 | 1.9 | R | 2000 | - | - | 0.3 |
| 005 | RF Center: KARF2 r=1.95NM | KA358 | - | - | -6.4 | 4.5 | R | 554 | - | -3.00 | 0.13 0.30 |
| 006 | TF | RW03 | Y | 032 (025.8) | -6.4 | 1.5 | - | 81 | - | -3.00/54 | 0.13 0.30 |
| 007 | TF | OLTIB | - | 032 (025.8) | -6.4 | 6.2 | - | - | - | - | 1.0 |
| 008 | TF | TUMGI | - | 033 (026.7) | -6.4 | 14.5 | - | 3500 | - | - | 1.0 |

| Path | Waypoint Identifier | Inbound Course °M(°T) | Magnetic Variation | Outbound Time (MIN) | Turn Direction | Minimum Altitude (FT) | Maximum Altitude (FT) | Speed (KIAS) | RNP Value |
|------|---------------------|-----------------------|--------------------|---------------------|----------------|-----------------------|-----------------------|---------------|-----------|
| Hold | TUMGI | 213 (207.0) | -6.3 | 1.0 (-14000) | R | 3500 | FL140 | -230 (-14000) | 1.0 |

Waypoint Coordinates

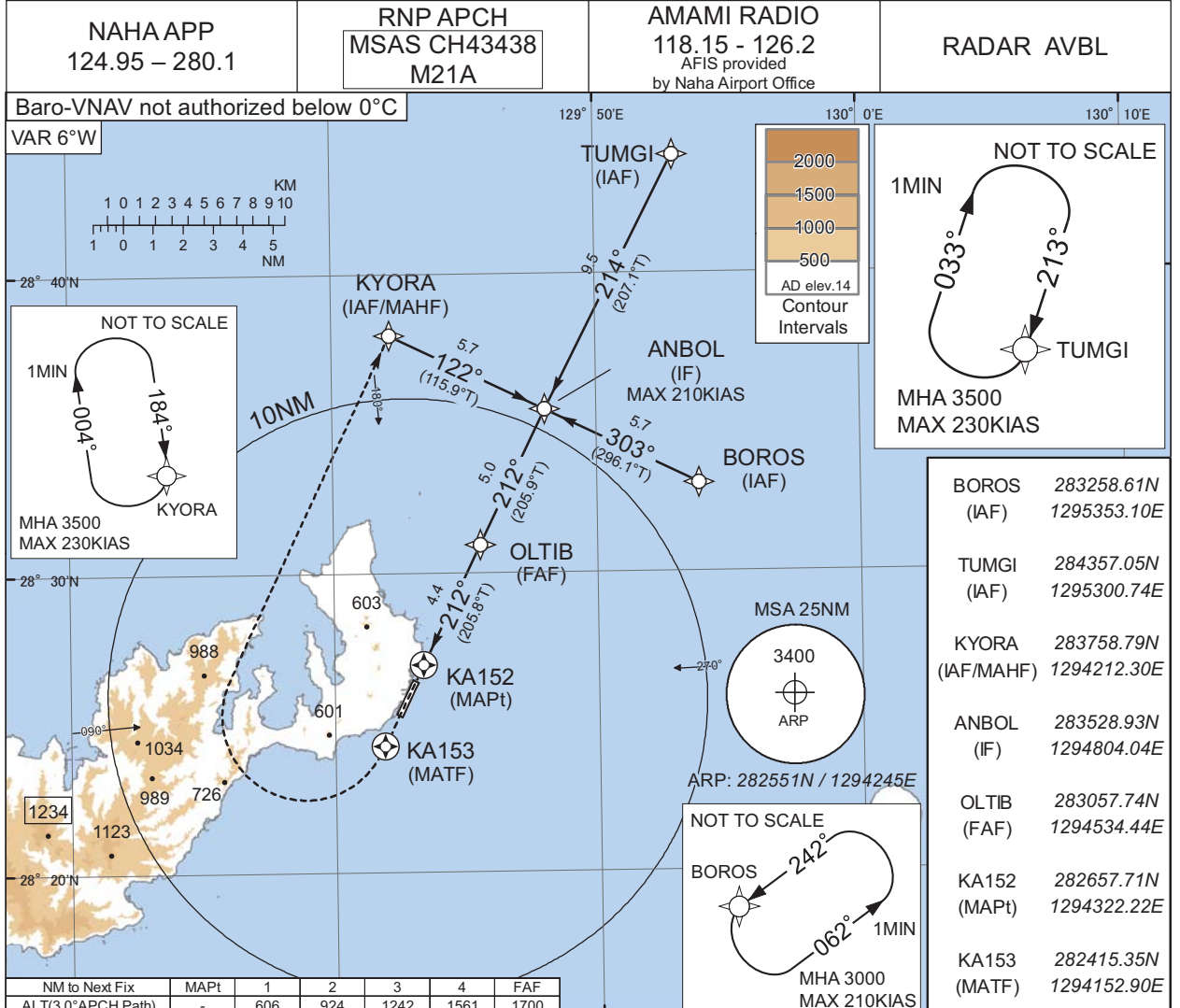
| Waypoint Identifier | Coordinates | RF Arc Center Identifier | Coordinates |
|---------------------|--------------------------|--------------------------|--------------------------|
| TUMGI | 284357.05N / 1295300.74E | KARF2 | 282309.49N / 1294344.25E |
| UPTM | 283124.97N / 1294848.31E | | |
| KA357 | 282236.27N / 1294551.51E | | |
| VESOR | 282117.56N / 1294424.10E | | |
| KA358 | 282400.82N / 1294144.91E | | |
| RW03 | 282521.18N / 1294229.11E | | |
| OLTIB | 283057.74N / 1294534.44E | | |

CHANGE : PROC renamed. PROC course: UPTM, KA357, VESOR, KA358, OLTIB established. YANGO, KA353, JOUGO, KA351, HABUH abolished.
RNP Value FM UPTM to VESOR. RF Arc Center Identifier (KARF2 added, KARF1 deleted). Waypoint Coordinates (RW03). VAR.

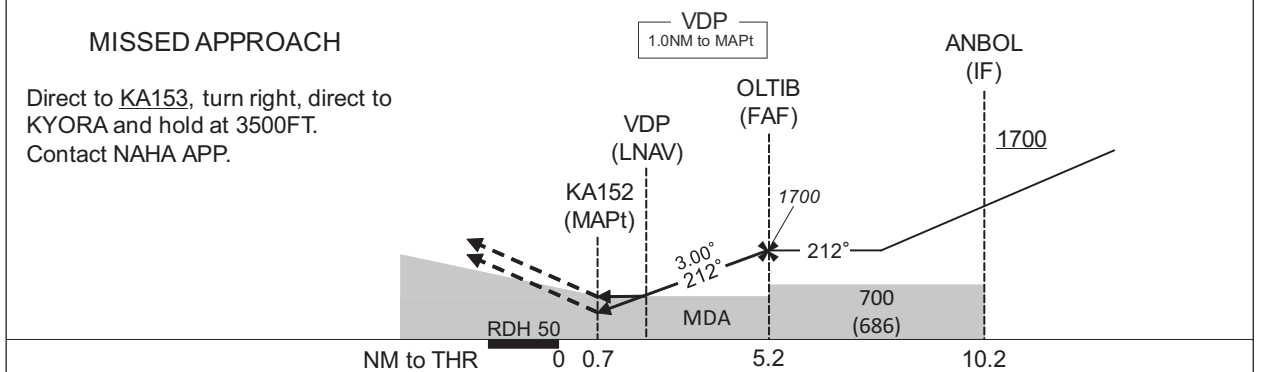
INSTRUMENT APPROACH CHART

RJKA / AMAMI

RNP Z RWY21



CHANGE : Description of RADAR Service. Missed APCH PROC.



Missed APCH climb gradient MNM 5.0%

| CAT | LPV | | LNAV/VNAV | | LNAV | | CIRCLING | |
|-----|----------|------|-----------|------|----------|------|----------|------|
| | DA(H) | CMV | DA(H) | CMV | MDA(H) | CMV | MDA(H) | VIS |
| A | 267(253) | 1200 | 600(586) | 1500 | 600(586) | 1500 | 600(586) | 1600 |
| B | 277(263) | 1300 | | 1800 | | 1800 | | 2400 |
| C | 287(273) | 1400 | | 2000 | | 2000 | | 3200 |
| D | 297(283) | 1600 | | | | | | |

MINIMA with Missed APCH climb gradient of 2.5% are not established.
Circling to EAST side of RWY only.

INSTRUMENT APPROACH CHART

RJKA / AMAMI

RNP Z RWY21

FAS DATA BLOCK

| | | | |
|----------------------------------|---------------|----------------------------|---------------|
| Operation type | 0 | LTP/FTP ellipsoidal height | +00333 |
| SBAS service provider identifier | 2 | FPAP latitude | 282521.1620N |
| Airport identifier | RJKA | FPAP longitude | 1294229.1275E |
| Runway | 21 | Threshold crossing height | 00015.0 |
| Approach performance designator | 0 | TCH units selector | 1 |
| Route indicator | Z | Glide path angle | 03.00 |
| Reference path data selector | 0 | Course width at threshold | 105.00 |
| Reference path ID | M21A | ∟ length offset | 0000 |
| LTP/FTP latitude | 282619.5815N | HAL | 40.0 |
| LTP/FTP longitude | 1294301.2745E | VAL | 50.0 |
| CRC remainder | A4D8FDB0 | | |

Required additional data

| | |
|----------------------------|-----|
| LTP/FTP orthometric height | 4.5 |
|----------------------------|-----|

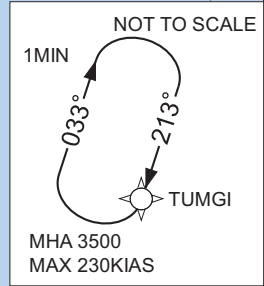
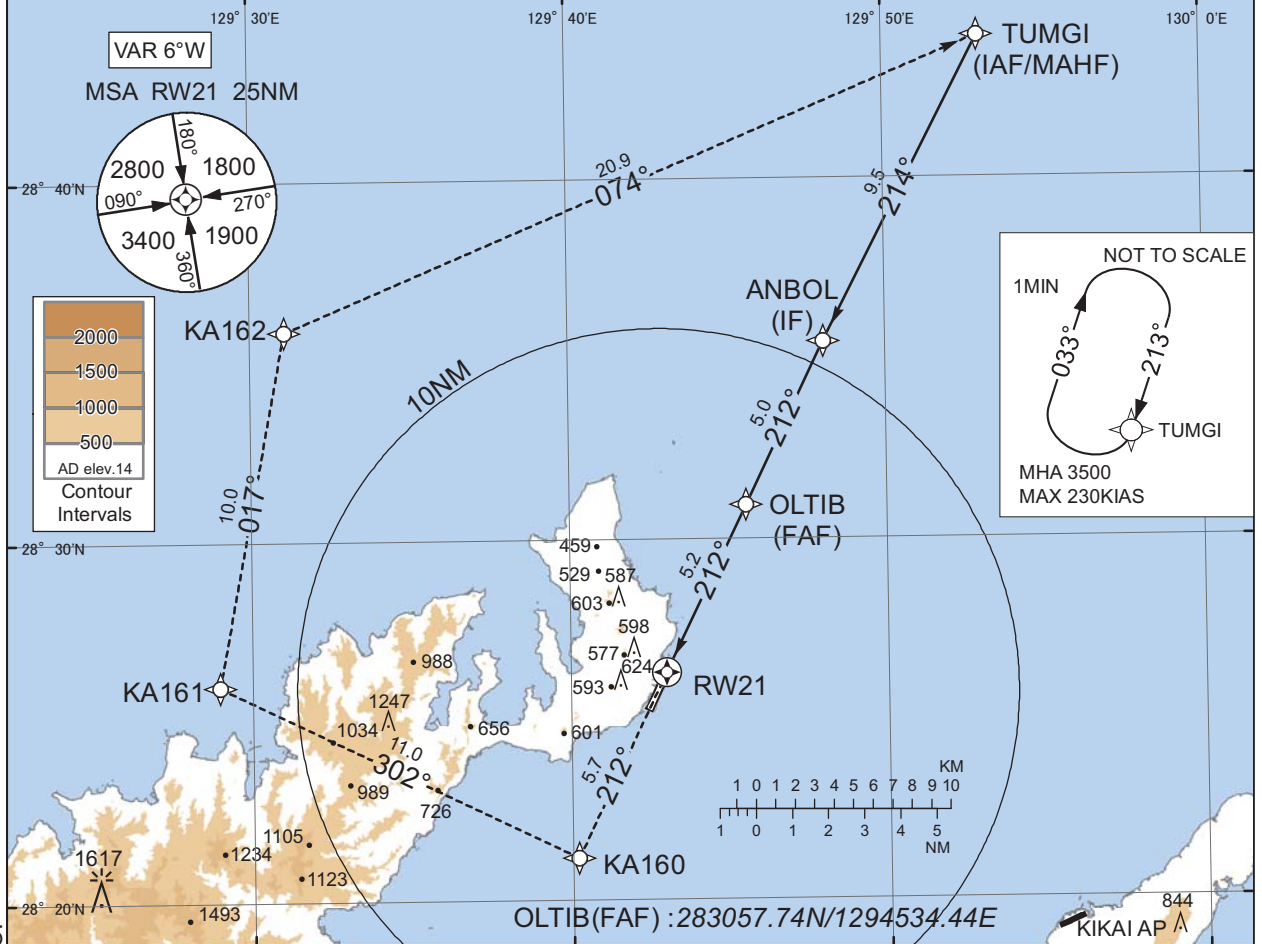
CHANGE : FAS DATA BLOCK and Required additional data established.

INSTRUMENT APPROACH CHART

RJKA / AMAMI RNP Y RWY21(AR)

| | | | |
|----------------------------|--------|--|------------|
| NAHA APP 124.95 - 280.1 | RNP AR | AMAMI RADIO 118.15 - 126.2 <small>AFIS provided by Naha Airport Office</small> | RADAR AVBL |
|----------------------------|--------|--|------------|

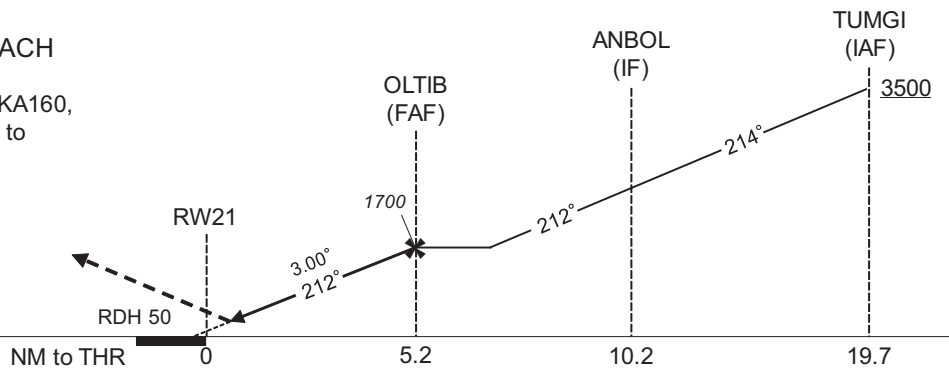
For uncompensated Baro-VNAV systems, procedure not authorized below 0°C / above 45°C



CHANGE : Description of RADAR Service. Missed APCH PROC.

MISSED APPROACH

Climb to 3500FT, to KA160, to KA161, to KA162, to TUMGI and hold. Contact NAHA APP.



Missed APCH climb gradient MNM 5.0%

| CAT | THR elev. 14 | | AD elev. 14 | |
|-----|--------------|------|-------------|------|
| | RNP 0.14 | | RNP 0.30 | |
| | DA(H) | CMV | DA(H) | CMV |
| A | - | - | - | - |
| B | - | - | - | - |
| C | 287(273) | 1400 | 365(351) | 1600 |
| D | 297(283) | 1600 | 387(373) | 1800 |

MINIMA with Missed APCH climb gradient of 2.5% are not established.

Authorization Required

INSTRUMENT APPROACH CHART

RJKA / AMAMI

RNP Y RWY21(AR)

Coding Table

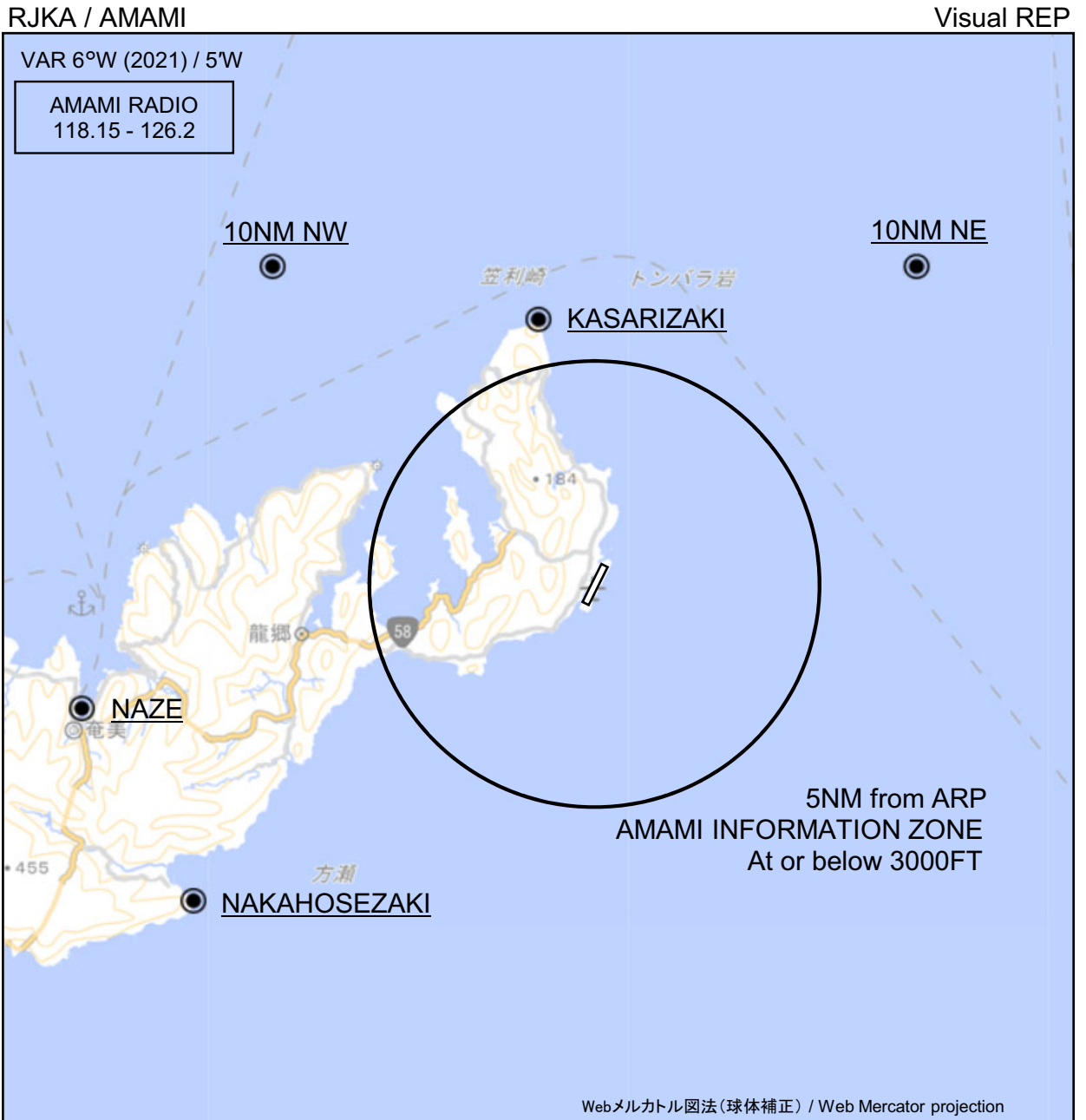
| Serial Number | Path Descriptor | Waypoint Identifier | Fly Over | Course °M(°T) | Magnetic Variation | Distance (NM) | Turn Direction | Altitude (FT) | Speed (KIAS) | VPA/ RDH (°/FT) | RNP Value |
|---------------|-----------------|---------------------|----------|---------------|--------------------|---------------|----------------|---------------|--------------|-----------------|--------------|
| 001 | IF | TUMGI | - | - | -6.4 | - | - | +3500 | - | - | - |
| 002 | TF | ANBOL | - | 214 (207.1) | -6.4 | 9.5 | - | - | - | - | 1.0 |
| 003 | TF | OLTIB | - | 212 (205.9) | -6.4 | 5.0 | - | 1700 | - | - | 1.0 |
| 004 | TF | RW21 | Y | 212 (205.8) | -6.4 | 5.2 | - | 64 | - | -3.00/50 | 0.14 0.30 |
| 005 | TF | KA160 | - | 212 (205.8) | -6.4 | 5.7 | - | - | - | - | 1.0 |
| 006 | TF | KA161 | - | 302 (296.0) | -6.4 | 11.0 | - | - | - | - | 1.0 |
| 007 | TF | KA162 | - | 017 (010.7) | -6.4 | 10.0 | - | - | - | - | 1.0 |
| 008 | TF | TUMGI | - | 074 (067.1) | -6.4 | 20.9 | - | 3500 | - | - | 1.0 |

| Path | Waypoint Identifier | Inbound Course °M(°T) | Magnetic Variation | Outbound Time (MIN) | Turn Direction | Minimum Altitude (FT) | Maximum Altitude (FT) | Speed (KIAS) | RNP Value |
|------|---------------------|-----------------------|--------------------|---------------------|----------------|-----------------------|-----------------------|---------------|-----------|
| Hold | TUMGI | 213 (207.0) | -6.3 | 1.0 (-14000) | R | 3500 | FL140 | -230 (-14000) | 1.0 |

Waypoint Coordinates

| Waypoint Identifier | Coordinates |
|---------------------|--------------------------|
| TUMGI | 284357.05N / 1295300.74E |
| ANBOL | 283528.93N / 1294804.04E |
| OLTIB | 283057.74N / 1294534.44E |
| RW21 | 282619.61N / 1294301.26E |
| KA160 | 282111.47N / 1294011.84E |
| KA161 | 282600.04N / 1292858.96E |
| KA162 | 283551.31N / 1293105.90E |

CHANGE : PROC course. ANBOL, OLTIB, KA160 established. IMORE, HABUJH, KA101 abolished. Waypoint Coordinates (RW21). VAR.



※図中に標高を示す数字がある場合、単位はメートル(m)である。The unit of measurement used to express elevation is meter(m).

CHANGE : Map updated. BRG/DIST from ARP.

| Call sign | BRG / DIST from ARP | Remarks |
|----------------------|---------------------|--------------------|
| 10NM NE | 045°T / 10.0NM | 海上 Over the sea |
| 10NM NW | 315°T / 10.0NM | 海上 Over the sea |
| 笠利崎 Kasarizaki | 348°T / 6.0NM | 灯台 Lighthouse |
| 名瀬 Naze | 256°T / 11.7NM | 港 Harbor |
| 仲干瀬崎 Nakahosezaki | 231°T / 11.4NM | 岬 Cape |

RJKA / AMAMI

Minimum Vectoring Altitude CHART

