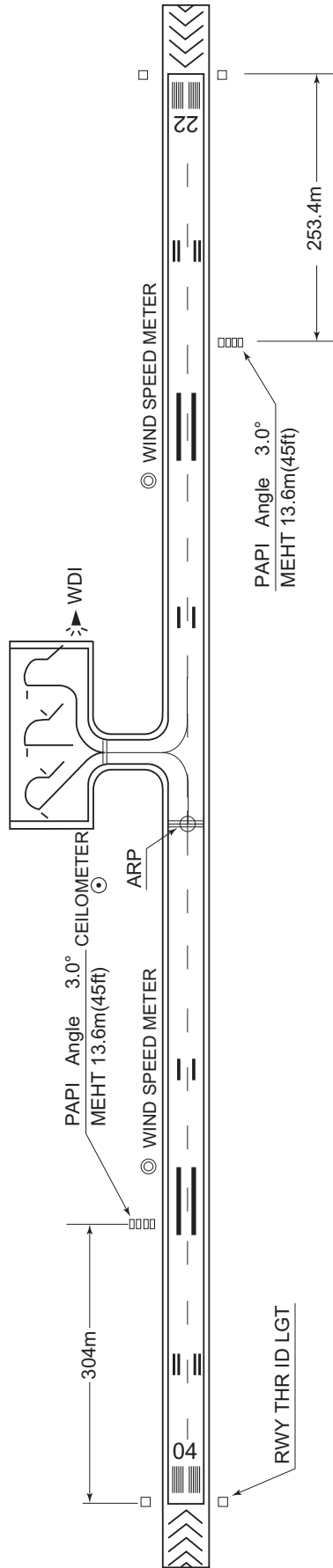
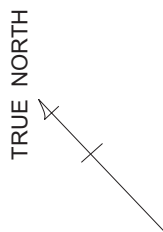


RJKB / OKIERABU

AD CHART

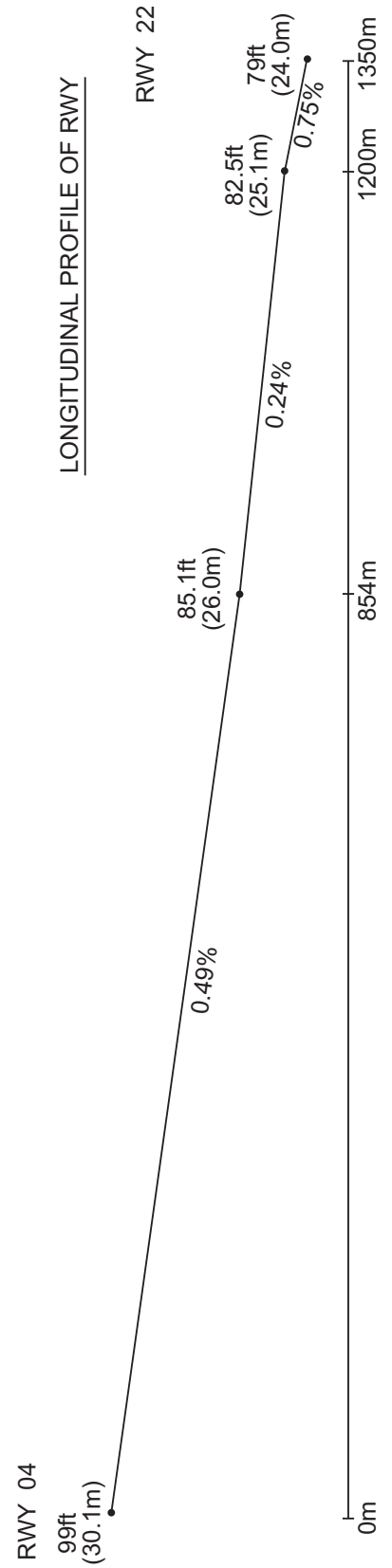
CHANGE : RWY THR elev.

OKIERABU AP



REMARKS : RWY GROOVING 1350m x 30m
WIDTH OF TWY 18m

LONGITUDINAL PROFILE OF RWY



STANDARD DEPARTURE CHART - INSTRUMENT

RJKB / OKIERABU

SID

ERABU REVERSAL TWO DEPARTURE

RWY04 : Climb RWY HDG to 500FT, turn right, via ONC R090 to ONC 12.0DME, turn right, via ONC R110 to ONC VORTAC.

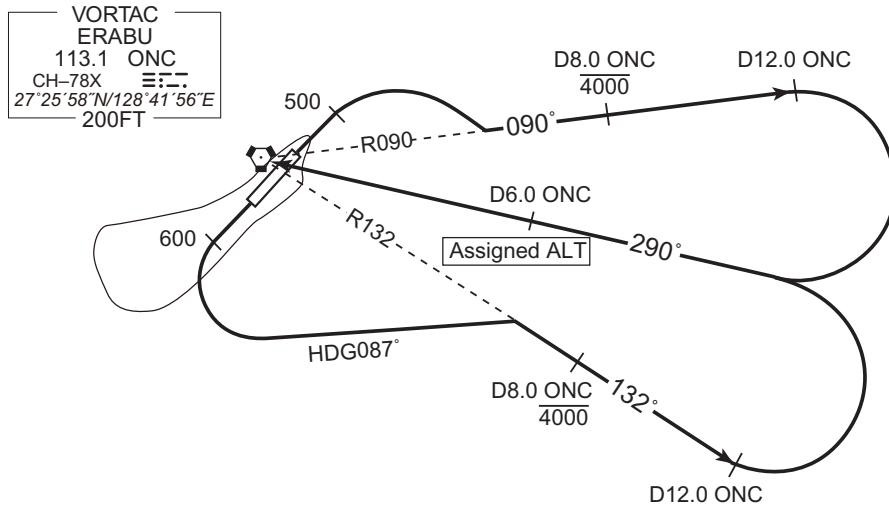
Cross ONC R090/8.0DME at or below 4000FT, cross ONC R110/6.0DME at assigned altitude.

RWY22 : Climb RWY HDG to 600FT, turn left HDG087 to intercept and proceed via ONC R132 to ONC 12.0DME, turn left, via ONC R110 to ONC VORTAC.

Cross ONC R132/8.0DME at or below 4000FT, cross ONC R110/6.0DME at assigned altitude.

Note RWY22 : 5.0% climb gradient required up to 600FT.

OBST ALT 145FT located at 0.2NM 257° FM end of RWY22.



CHANGE : Description of PROC name.

STANDARD DEPARTURE CHART - INSTRUMENT

RJKB / OKIERABU

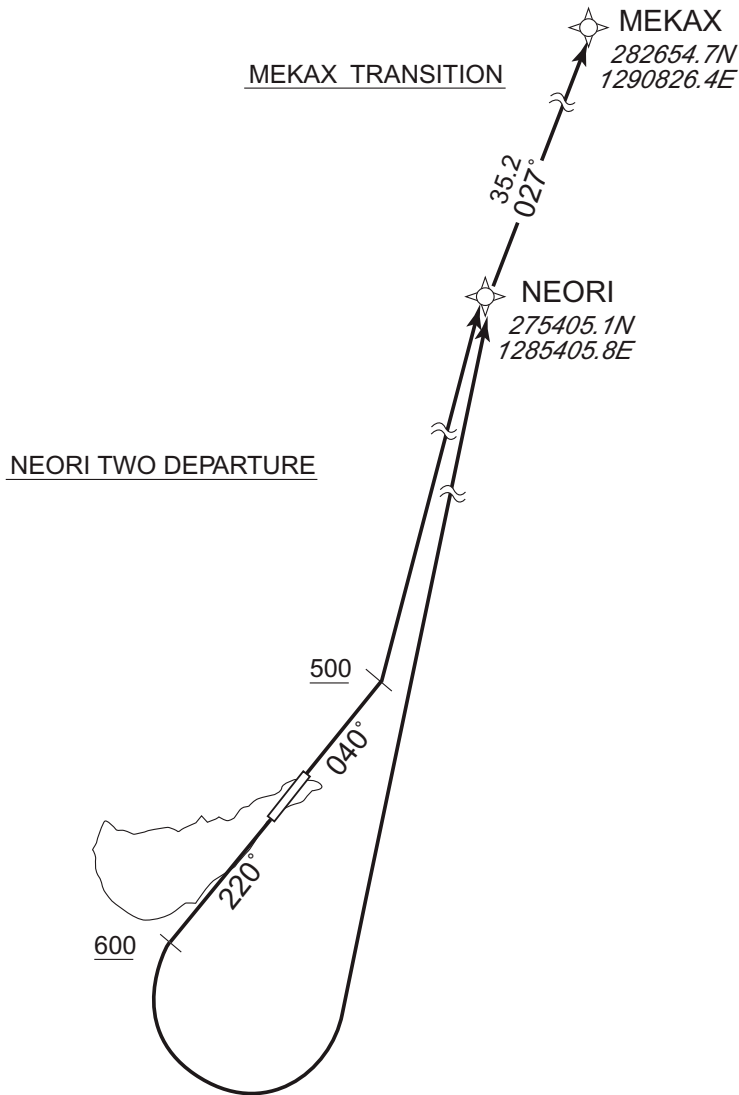
RNAV SID and TRANSITION

NEORI TWO DEPARTURE
MEKAX TRANSITION

RNP1

Note GNSS required.

VAR 6° W



CHANGE : PROC name added. MEKAX TRANSITION added.

NEORI TWO DEPARTURE

RWY04: Climb on HDG040° at or above 500FT, turn left direct to NEORI.

RWY22: Climb on HDG220° at or above 600FT, turn left direct to NEORI.

Note RWY22 : 5.0% climb gradient required up to 600FT.

OBST ALT 145FT located at 0.2NM 257° FM end of RWY22.

MEKAX TRANSITION

From NEORI to MEKAX.

STANDARD DEPARTURE CHART - INSTRUMENT

RJKB / OKIERABU

RNAV SID and TRANSITION

NEORI TWO DEPARTURE

RWY04

Serial Number	Path Descriptor	Waypoint Identifier	Fly Over	Course °M(°T)	Magnetic Variation	Distance (NM)	Turn Direction	Altitude (FT)	Speed (KIAS)	Vertical Angle	Navigation Specification
001	VA	-	-	040 (034.0)	-6.2	-	-	+500	-	-	RNP1
002	DF	NEORI	-	-	-6.2	-	L	-	-	-	RNP1

RWY22

Serial Number	Path Descriptor	Waypoint Identifier	Fly Over	Course °M(°T)	Magnetic Variation	Distance (NM)	Turn Direction	Altitude (FT)	Speed (KIAS)	Vertical Angle	Navigation Specification
001	VA	-	-	220 (214.0)	-6.2	-	-	+600	-	-	RNP1
002	DF	NEORI	-	-	-6.2	-	L	-	-	-	RNP1

MEKAX TRANSITION

Serial Number	Path Descriptor	Waypoint Identifier	Fly Over	Course °M(°T)	Magnetic Variation	Distance (NM)	Turn Direction	Altitude (FT)	Speed (KIAS)	Vertical Angle	Navigation Specification
001	IF	NEORI	-	-	-6.2	-	-	-	-	-	RNP1
002	TF	MEKAX	-	027 (021.0)	-6.2	35.2	-	-	-	-	RNP1

CHANGE : PROC name added. NEORI TWO DEPARTURE added. True bearing. VAR.

STANDARD DEPARTURE CHART - INSTRUMENT

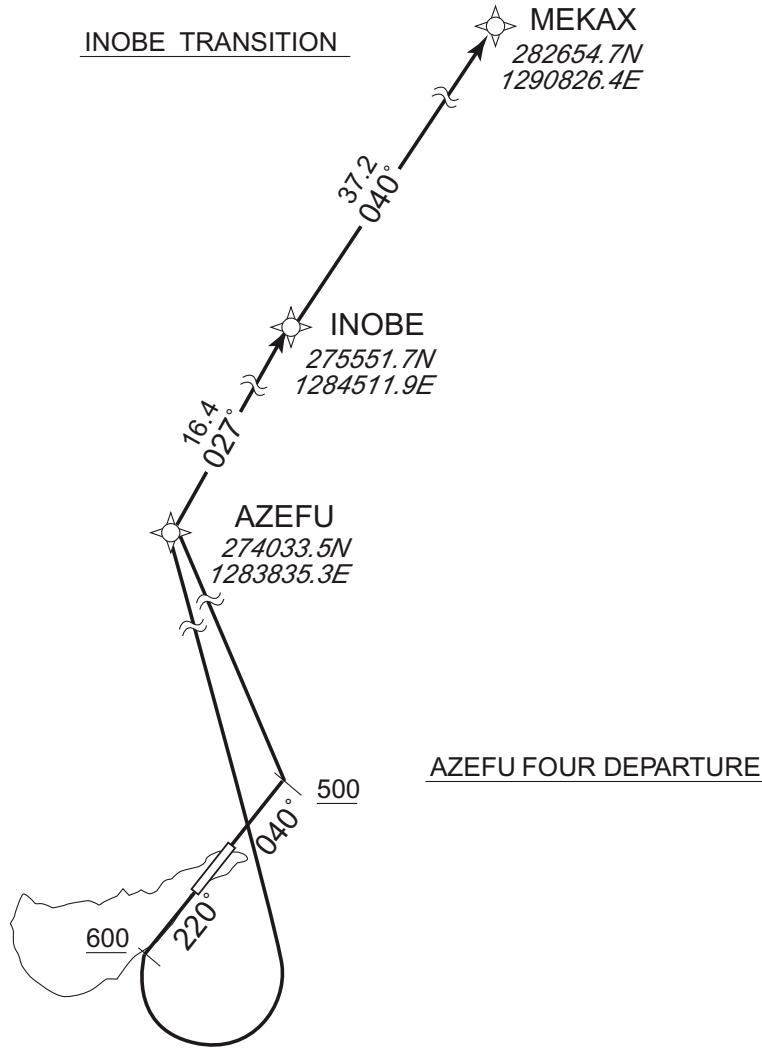
RJKB / OKIERABU

RNAV SID and TRANSITION

<p>AZEFU FOUR DEPARTURE INOBE TRANSITION</p>	<p>RNP1</p>
--	-------------

Note GNSS required.

VAR 6° W



CHANGE : PROC name added. INOBE TRANSITION added. SID renamed(AZEFU FOUR DEPARTURE).
Course FM INOBE to MEKAX. ALT restriction at AZEFU deleted.

AZEFU FOUR DEPARTURE

RWY04: Climb on HDG040° at or above 500FT, turn left direct to AZEFU, to INOBE.

RWY22: Climb on HDG220° at or above 600FT, turn left direct to AZEFU, to INOBE.

Note RWY22 : 5.0% climb gradient required up to 600FT.

OBST ALT 145FT located at 0.2NM 257° FM end of RWY22.

INOBE TRANSITION

From INOBE to MEKAX.

STANDARD DEPARTURE CHART - INSTRUMENT

RJKB / OKIERABU

RNAV SID and TRANSITION

AZEFU FOUR DEPARTURE

RWY04

Serial Number	Path Descriptor	Waypoint Identifier	Fly Over	Course °M(°T)	Magnetic Variation	Distance (NM)	Turn Direction	Altitude (FT)	Speed (KIAS)	Vertical Angle	Navigation Specification
001	VA	—	—	040 (034.0)	-6.2	—	—	+500	—	—	RNP1
002	DF	AZEFU	—	—	-6.2	—	L	—	—	—	RNP1
003	TF	INOBE	—	027 (020.9)	-6.2	16.4	—	—	—	—	RNP1

RWY22

Serial Number	Path Descriptor	Waypoint Identifier	Fly Over	Course °M(°T)	Magnetic Variation	Distance (NM)	Turn Direction	Altitude (FT)	Speed (KIAS)	Vertical Angle	Navigation Specification
001	VA	—	—	220 (214.0)	-6.2	—	—	+600	—	—	RNP1
002	DF	AZEFU	—	—	-6.2	—	L	—	—	—	RNP1
003	TF	INOBE	—	027 (020.9)	-6.2	16.4	—	—	—	—	RNP1

INOBE TRANSITION

Serial Number	Path Descriptor	Waypoint Identifier	Fly Over	Course °M(°T)	Magnetic Variation	Distance (NM)	Turn Direction	Altitude (FT)	Speed (KIAS)	Vertical Angle	Navigation Specification
001	IF	INOBE	—	—	-6.2	—	—	—	—	—	RNP1
002	TF	MEKAX	—	040 (033.3)	-6.2	37.2	—	—	—	—	RNP1

CHANGE : PROC name added. AZEFU FOUR DEPARTURE added. VAR. True bearing. ALT restriction at AZEFU deleted.

STANDARD DEPARTURE CHART - INSTRUMENT

RJKB / OKIERABU

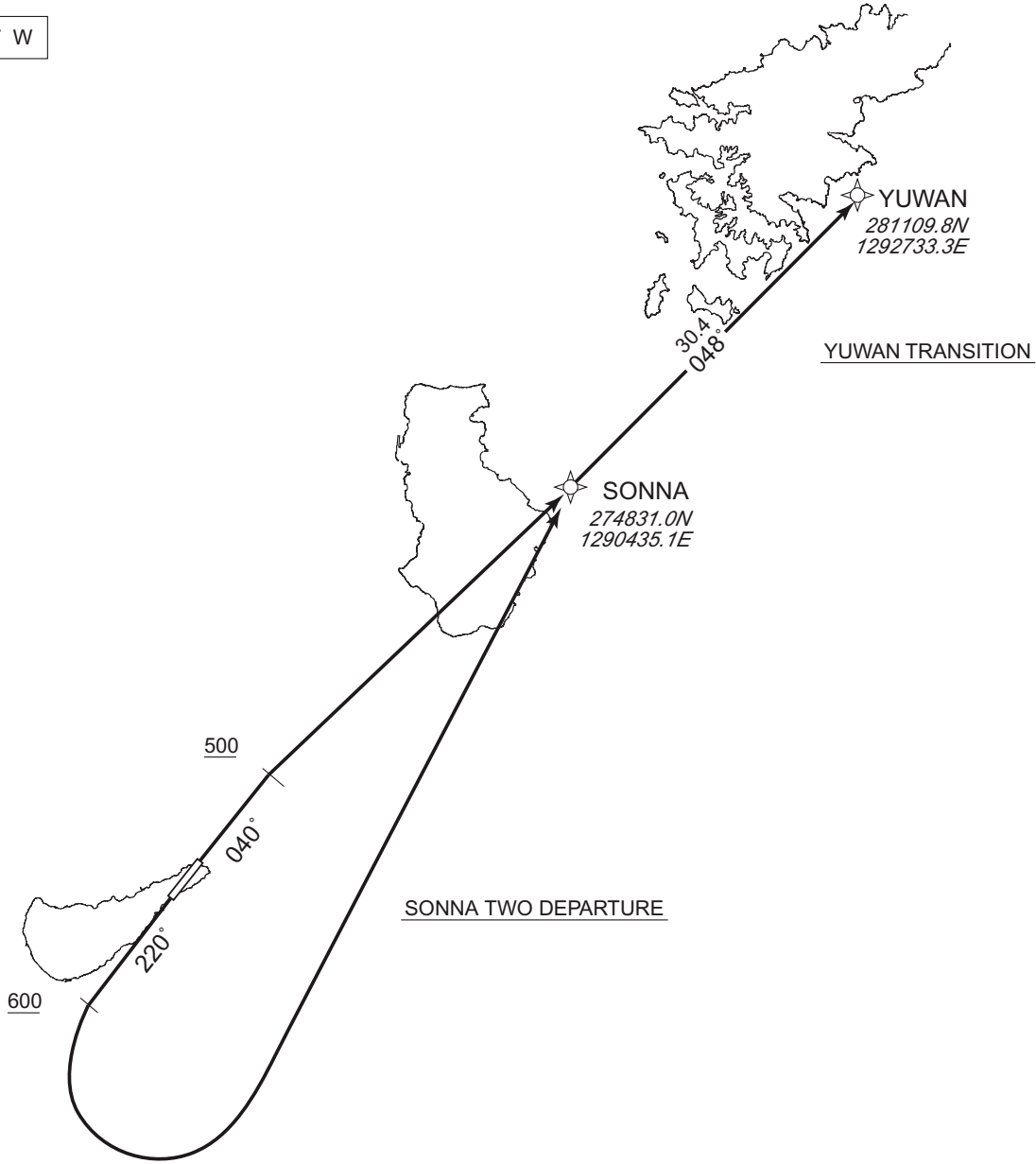
RNAV SID and TRANSITION

SONNA TWO DEPARTURE
YUWAN TRANSITION

RNP1

Note GNSS required.

VAR 6° W



CHANGE : PROC name added. YUWAN TRANSITION added.

SONNA TWO DEPARTURE

RWY04: Climb on HDG040° at or above 500FT, direct to SONNA.
RWY22: Climb on HDG220° at or above 600FT, turn left direct to SONNA.
Note RWY22 : 5.0% climb gradient required up to 600FT.
OBST ALT 145FT located at 0.2NM 257° FM end of RWY22.

YUWAN TRANSITION

From SONNA to YUWAN.

STANDARD DEPARTURE CHART - INSTRUMENT

RJKB / OKIERABU

RNAV SID and TRANSITION

SONNA TWO DEPARTURE

RWY04

Serial Number	Path Descriptor	Waypoint Identifier	Fly Over	Course °M(°T)	Magnetic Variation	Distance (NM)	Turn Direction	Altitude (FT)	Speed (KIAS)	Vertical Angle	Navigation Specification
001	VA	—	—	040 (034.0)	-6.2	—	—	+500	—	—	RNP1
002	DF	SONNA	—	—	-6.2	—	—	—	—	—	RNP1

RWY22

Serial Number	Path Descriptor	Waypoint Identifier	Fly Over	Course °M(°T)	Magnetic Variation	Distance (NM)	Turn Direction	Altitude (FT)	Speed (KIAS)	Vertical Angle	Navigation Specification
001	VA	—	—	220 (214.0)	-6.2	—	—	+600	—	—	RNP1
002	DF	SONNA	—	—	-6.2	—	L	—	—	—	RNP1

YUWAN TRANSITION

Serial Number	Path Descriptor	Waypoint Identifier	Fly Over	Course °M(°T)	Magnetic Variation	Distance (NM)	Turn Direction	Altitude (FT)	Speed (KIAS)	Vertical Angle	Navigation Specification
001	IF	SONNA	—	—	-6.2	—	—	—	—	—	RNP1
002	TF	YUWAN	—	048 (041.8)	-6.2	30.4	—	—	—	—	RNP1

CHANGE : PROC name added. SONNA TWO DEPARTURE added. True bearing. VAR.

STANDARD DEPARTURE CHART - INSTRUMENT

RJKB / OKIERABU

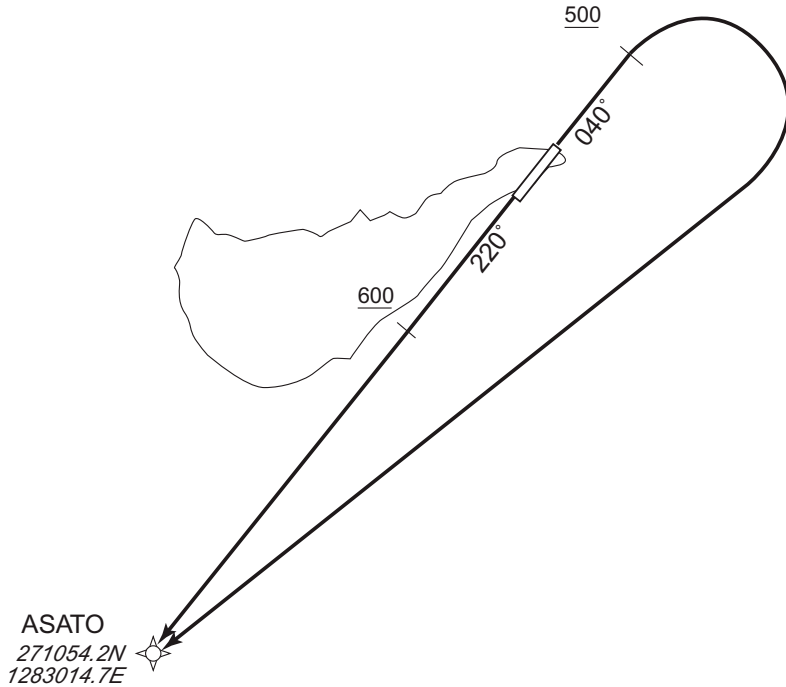
RNAV SID

YUNTA TWO DEPARTURE

RNP1

Note GNSS required.

VAR 6° W



RWY04: Climb on HDG040° at or above 500FT, turn right direct to ASATO.

RWY22: Climb on HDG220° at or above 600FT, direct to ASATO.

Note RWY22 : 5.0% climb gradient required up to 600FT.

OBST ALT 145FT located at 0.2NM 257° FM end of RWY22.

RWY04

Serial Number	Path Descriptor	Waypoint Identifier	Fly Over	Course °M(°T)	Magnetic Variation	Distance (NM)	Turn Direction	Altitude (FT)	Speed (KIAS)	Vertical Angle	Navigation Specification
001	VA	-	-	040 (034.0)	-6.2	-	-	+500	-	-	RNP1
002	DF	ASATO	-	-	-6.2	-	R	-	-	-	RNP1

RWY22

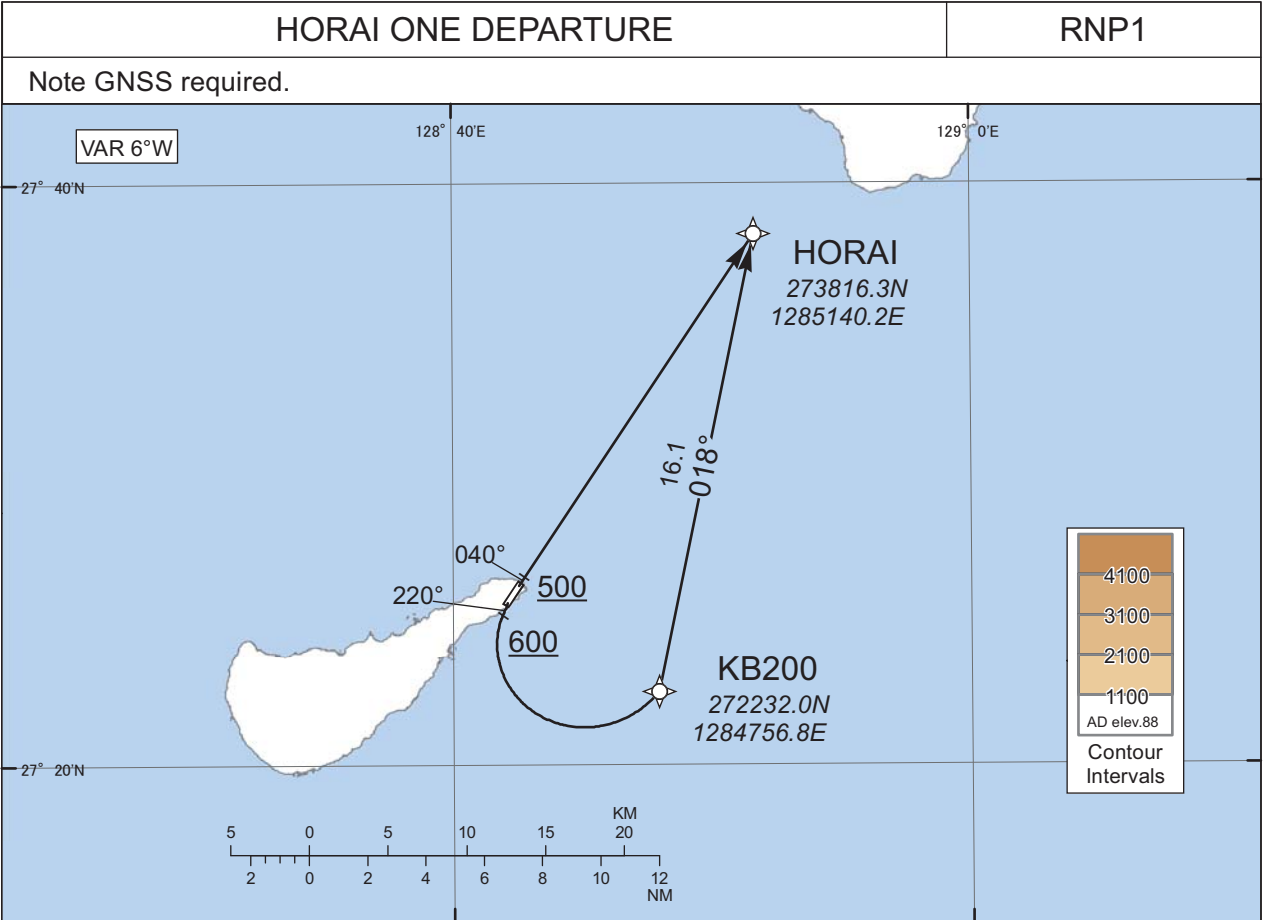
Serial Number	Path Descriptor	Waypoint Identifier	Fly Over	Course °M(°T)	Magnetic Variation	Distance (NM)	Turn Direction	Altitude (FT)	Speed (KIAS)	Vertical Angle	Navigation Specification
001	VA	-	-	220 (214.0)	-6.2	-	-	+600	-	-	RNP1
002	DF	ASATO	-	-	-6.2	-	-	-	-	-	RNP1

CHANGE : VAR. True bearing.

STANDARD DEPARTURE CHART - INSTRUMENT

RJKB / OKIERABU

RNAV SID



RWY04 : Climb on HDG 040° at or above 500FT, direct to HORAI.
 RWY22 : Climb on HDG 220° at or above 600FT, turn left direct to KB200, to HORAI.

NOTE RWY22 : 5.0% climb gradient required up to 600FT.
 OBST ALT 145FT located at 0.2NM 257° FM end of RWY22

RWY04

Serial Number	Path Descriptor	Waypoint Identifier	Fly Over	Course °M(°T)	Magnetic Variation	Distance (NM)	Turn Direction	Altitude (FT)	Speed (KIAS)	Vertical Angle	Navigation Specification
001	VA	-	-	040 (034.0)	-6.2	-	-	+500	-	-	RNP1
002	DF	HORAI	-	-	-6.2	-	-	-	-	-	RNP1

RWY22

Serial Number	Path Descriptor	Waypoint Identifier	Fly Over	Course °M(°T)	Magnetic Variation	Distance (NM)	Turn Direction	Altitude (FT)	Speed (KIAS)	Vertical Angle	Navigation Specification
001	VA	-	-	220 (214.0)	-6.2	-	-	+600	-	-	RNP1
002	DF	KB200	-	-	-6.2	-	L	-	-	-	RNP1
003	TF	HORAI	-	018 (011.8)	-6.2	16.1	-	-	-	-	RNP1

CHANGE : VAR. True bearing.

INTENTIONALLY LEFT BLANK

STANDARD ARRIVAL CHART - INSTRUMENT

RJKB / OKIERABU

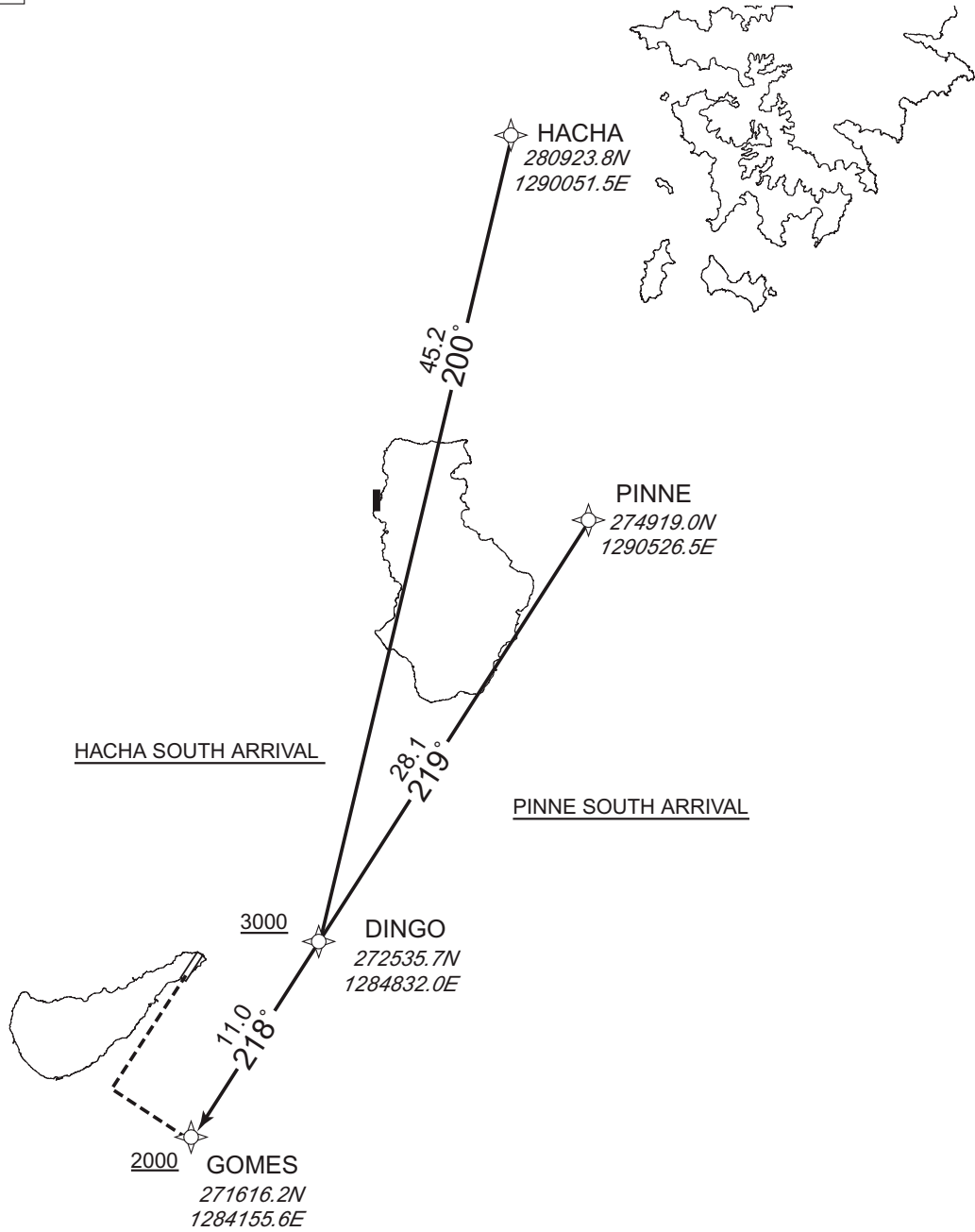
RNAV STAR RWY04

HACHA SOUTH ARRIVAL
PINNE SOUTH ARRIVAL

RNP1

Note GNSS required.

VAR 6°W



CHANGE : PROC course FM PINNE to DINGO.

STANDARD ARRIVAL CHART - INSTRUMENT

RJKB / OKIERABU

RNAV STAR RWY04

HACHA SOUTH ARRIVAL

From HACHA, to DINGO at or above 3000FT, to GOMES at or above 2000FT.

Serial Number	Path Descriptor	Waypoint Identifier	Fly Over	Course °M(°T)	Magnetic Variation	Distance (NM)	Turn Direction	Altitude (FT)	Speed (KIAS)	Vertical Angle	Navigation Specification
001	IF	HACHA	-	-	-6.2	-	-	-	-	-	RNP1
002	TF	DINGO	-	200 (194.0)	-6.2	45.2	-	+3000	-	-	RNP1
003	TF	GOMES	-	218 (212.2)	-6.2	11.0	-	+2000	-	-	RNP1

PINNE SOUTH ARRIVAL

From PINNE, to DINGO at or above 3000FT, to GOMES at or above 2000FT.

Serial Number	Path Descriptor	Waypoint Identifier	Fly Over	Course °M(°T)	Magnetic Variation	Distance (NM)	Turn Direction	Altitude (FT)	Speed (KIAS)	Vertical Angle	Navigation Specification
001	IF	PINNE	-	-	-6.2	-	-	-	-	-	RNP1
002	TF	DINGO	-	219 (212.3)	-6.2	28.1	-	+3000	-	-	RNP1
003	TF	GOMES	-	218 (212.2)	-6.2	11.0	-	+2000	-	-	RNP1

CHANGE : VAR. Course FM PINNE to DINGO.

STANDARD ARRIVAL CHART - INSTRUMENT

RJKB / OKIERABU

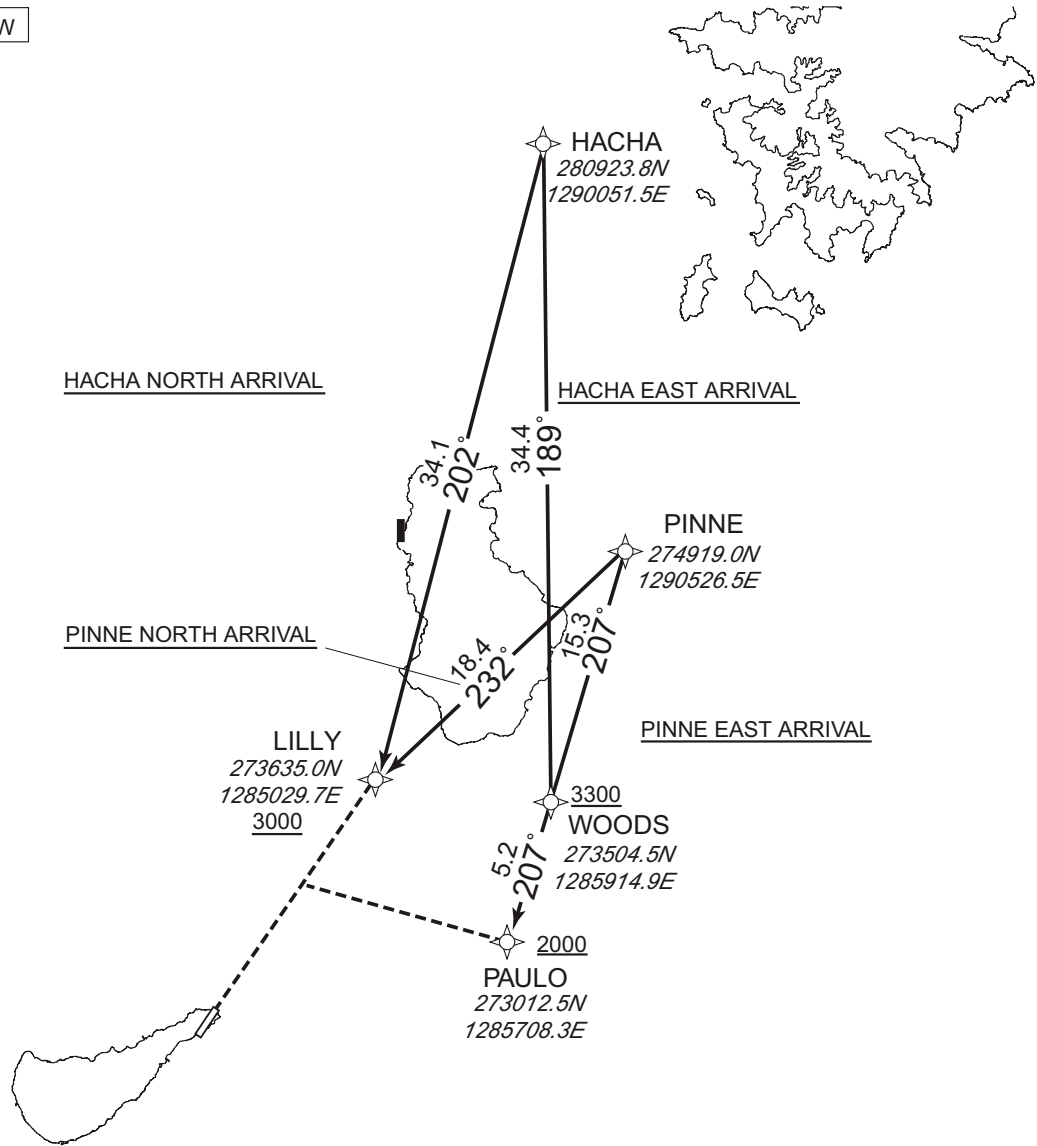
RNAV STAR RWY22

HACHA NORTH ARRIVAL / HACHA EAST ARRIVAL
PINNE NORTH ARRIVAL / PINNE EAST ARRIVAL

RNP1

Note GNSS required.

VAR 6°W



CHANGE : PROC course FM HACHA to WOODS.

STANDARD ARRIVAL CHART - INSTRUMENT

RJKB / OKIERABU

RNAV STAR RWY22

HACHA NORTH ARRIVAL

From HACHA, to LILLY at or above 3000FT.

Serial Number	Path Descriptor	Waypoint Identifier	Fly Over	Course °M(°T)	Magnetic Variation	Distance (NM)	Turn Direction	Altitude (FT)	Speed (KIAS)	Vertical Angle	Navigation Specification
001	IF	HACHA	-	-	-6.2	-	-	-	-	-	RNP1
002	TF	LILLY	-	202 (195.6)	-6.2	34.1	-	+3000	-	-	RNP1

HACHA EAST ARRIVAL

From HACHA, to WOODS at or above 3300FT, to PAULO at or above 2000FT.

Serial Number	Path Descriptor	Waypoint Identifier	Fly Over	Course °M(°T)	Magnetic Variation	Distance (NM)	Turn Direction	Altitude (FT)	Speed (KIAS)	Vertical Angle	Navigation Specification
001	IF	HACHA	-	-	-6.2	-	-	-	-	-	RNP1
002	TF	WOODS	-	189 (182.4)	-6.2	34.4	-	+3300	-	-	RNP1
003	TF	PAULO	-	207 (201.0)	-6.2	5.2	-	+2000	-	-	RNP1

PINNE NORTH ARRIVAL

From PINNE, to LILLY at or above 3000FT.

Serial Number	Path Descriptor	Waypoint Identifier	Fly Over	Course °M(°T)	Magnetic Variation	Distance (NM)	Turn Direction	Altitude (FT)	Speed (KIAS)	Vertical Angle	Navigation Specification
001	IF	PINNE	-	-	-6.2	-	-	-	-	-	RNP1
002	TF	LILLY	-	232 (226.2)	-6.2	18.4	-	+3000	-	-	RNP1

PINNE EAST ARRIVAL

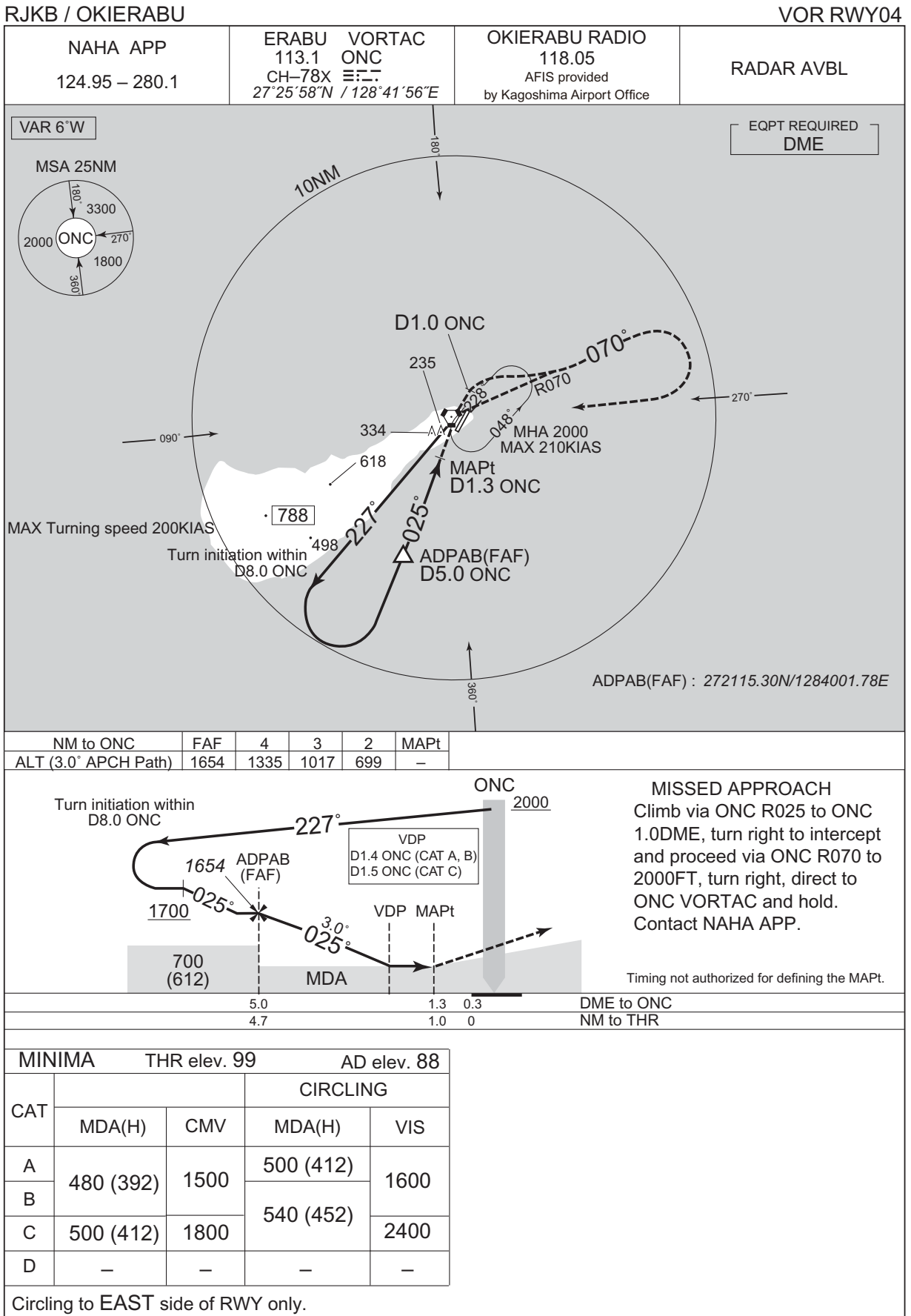
From PINNE, to WOODS at or above 3300FT, to PAULO at or above 2000FT.

Serial Number	Path Descriptor	Waypoint Identifier	Fly Over	Course °M(°T)	Magnetic Variation	Distance (NM)	Turn Direction	Altitude (FT)	Speed (KIAS)	Vertical Angle	Navigation Specification
001	IF	PINNE	-	-	-6.2	-	-	-	-	-	RNP1
002	TF	WOODS	-	207 (201.1)	-6.2	15.3	-	+3300	-	-	RNP1
003	TF	PAULO	-	207 (201.0)	-6.2	5.2	-	+2000	-	-	RNP1

CHANGE : VAR. Course FM HACHA to WOODS.

INSTRUMENT APPROACH CHART

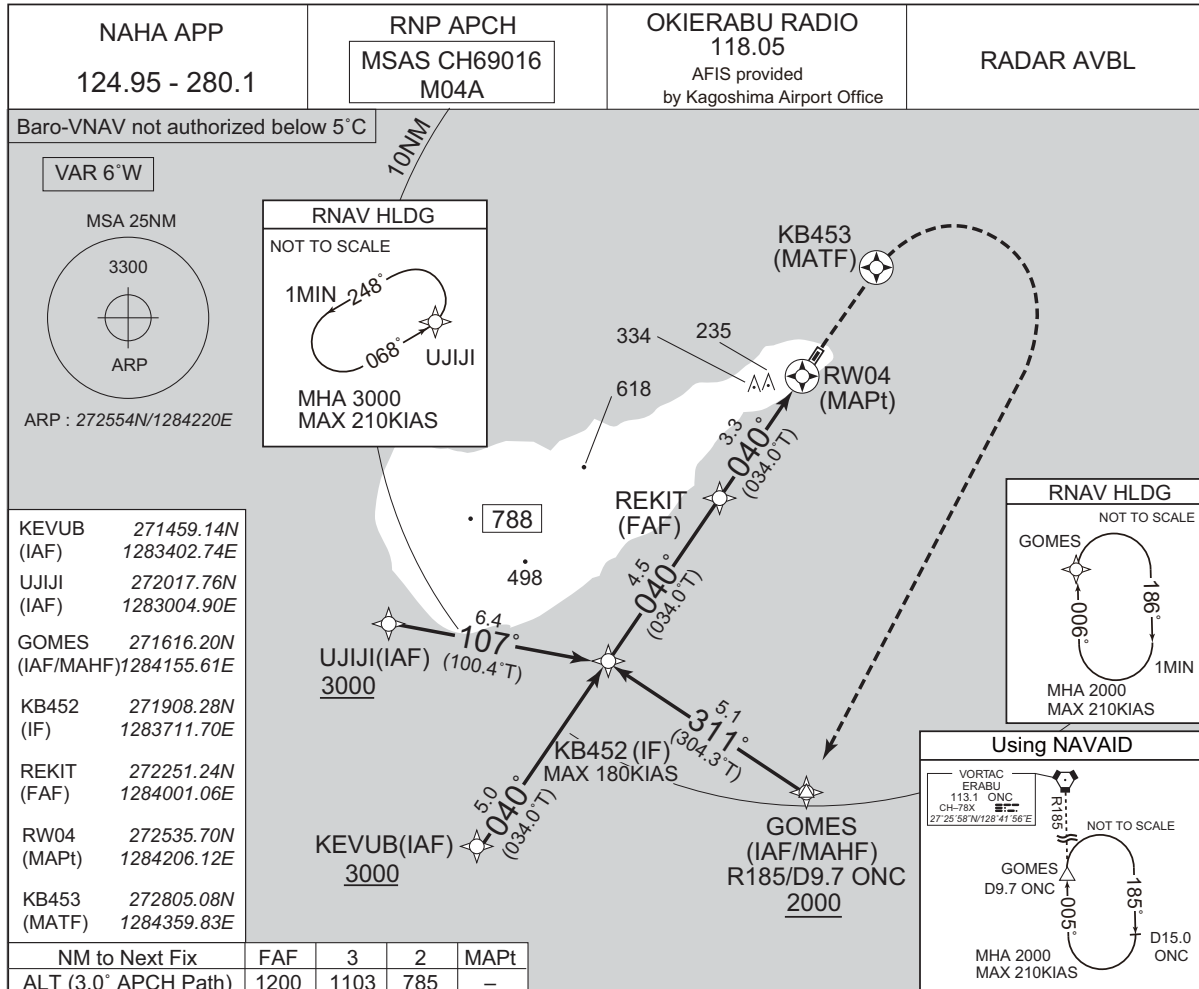
CHANGE : PROC renamed. ADPAB established. MOURY abolished. Missed APCH PROC. ALT restriction at CMPL Base Turn. VDP.
PROC course. DME to ONC. THR elev. MINIMA. VAR.



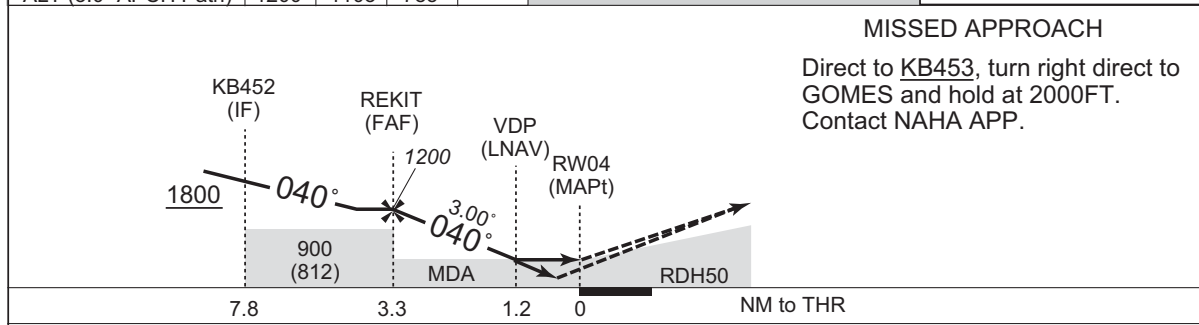
INSTRUMENT APPROACH CHART

RJKB / OKIERABU

RNP RWY04



CHANGE : PROC course. KEVUB, REKIT, KB452, KB453 established. KB450, KB451, RAGON abolished. MSAS CH added.
 MNM temperature for Baro-VNAV. Missed APCH for using VORTAC abolished. Missed APCH climb gradient MNM established.
 THR elev. MINIMA for LPV established. MINIMA for LPV established. MINIMA for LNAV/VNAV.



Missed APCH climb gradient MNM 5.0%

MINIMA		THR elev. 99		AD elev. 88				
CAT	LPV		LNAV/VNAV		LNAV		CIRCLING	
	DA(H)	CMV	DA(H)	CMV	MDA(H)	CMV	MDA(H)	VIS
A	366 (267)	1500	404 (305)	1500	500 (412)	1500	500 (412)	1600
B	376 (277)						540 (452)	
C	386 (287)	1600		1800		1800	540 (452)	2400
D	-	-	-	-	-	-	-	-

MINIMA with Missed APCH climb gradient of 2.5% are not established.
Circling to EAST side of RWY only.

INSTRUMENT APPROACH CHART

RJKB / OKIERABU

RNP RWY04

FAS DATA BLOCK

Operation type	0	LTP/FTP ellipsoidal height	+00608
SBAS service provider identifier	2	FPAP latitude	272621.2280N
Airport identifier	RJKB	FPAP longitude	1284240.8210E
Runway	04	Threshold crossing height	00015.0
Approach performance designator	0	TCH units selector	1
Route indicator		Glide path angle	03.00
Reference path data selector	0	Course width at threshold	105.00
Reference path ID	M04A	∠ length offset	0344
LTP/FTP latitude	272535.6665N	HAL	40.0
LTP/FTP longitude	1284206.1585E	VAL	50.0
CRC remainder	78273A92		

Required additional data

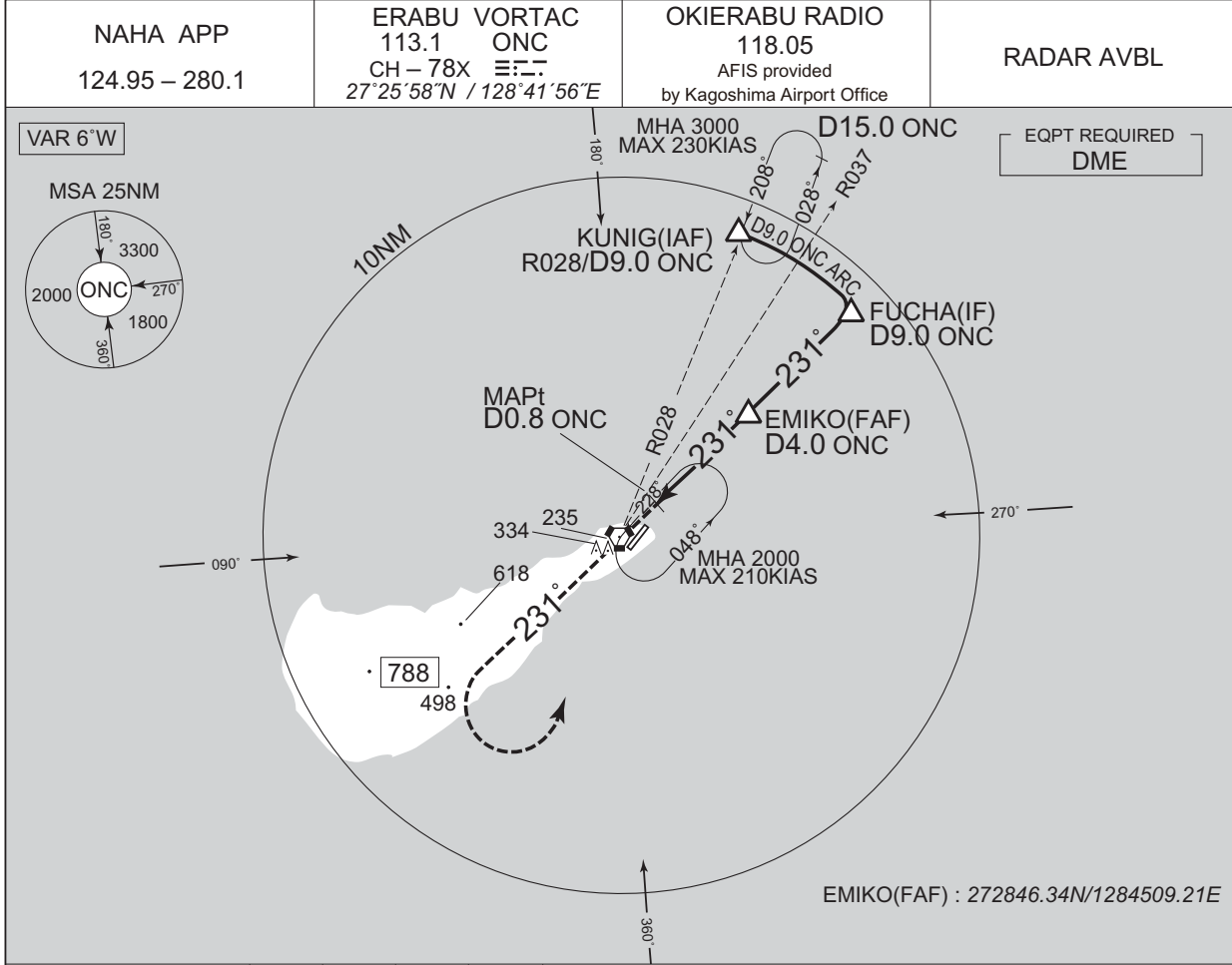
LTP/FTP orthometric height	30.1
----------------------------	------

CHANGE : FAS DATA BLOCK and Required additional data established.

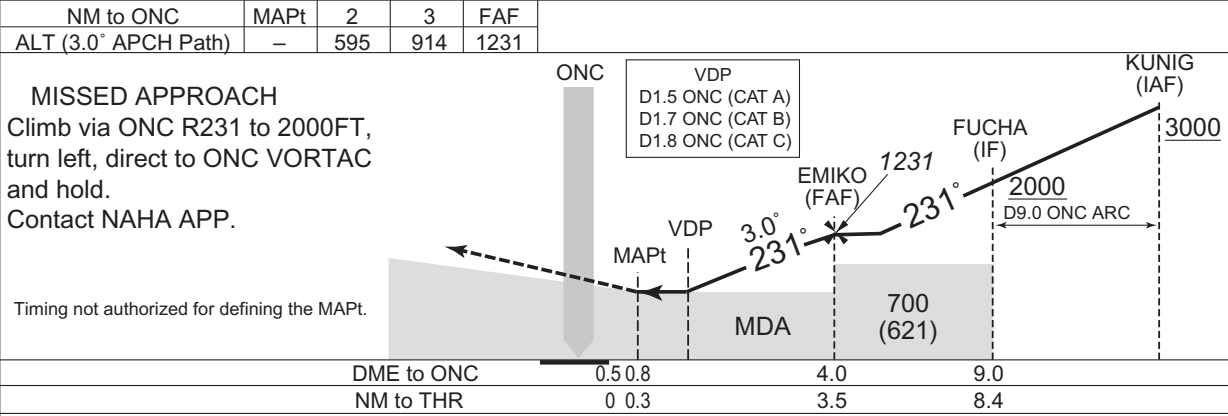
INSTRUMENT APPROACH CHART

RJKB / OKIERABU

VOR RWY22



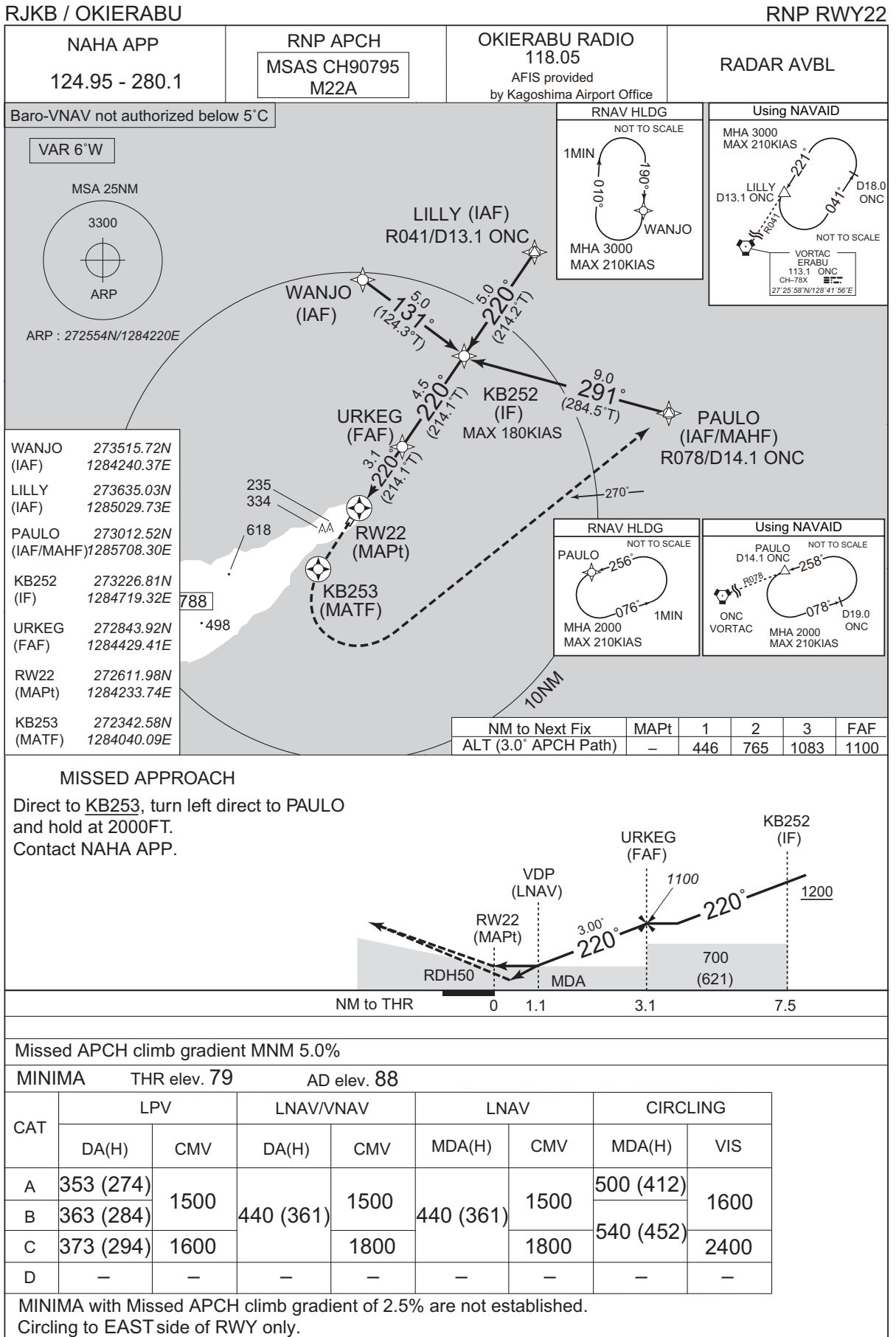
CHANGE : ALT(3.0° APCH Path). VDP. PROC ALT at EMIKO. NM to THR. VAR.



CAT	MINIMA		CIRCLING	
	MDA(H)	CMV	MDA(H)	VIS
A	420 (341)	1500	500 (412)	1600
B	460 (381)		540 (452)	
C	490 (411)	1800		2400
D	-	-	-	-

Circling to EAST side of RWY only.

INSTRUMENT APPROACH CHART



CHANGE : PROC course. URKEG, KB252, KB253 established. KB250, ALDER abolished. MSAS CH added.
MNM temperature for Baro-VNAV. Missed APCH for using VORTAC abolished. Missed APCH climb gradient MNM established.
MINIMA for LPV established.

INSTRUMENT APPROACH CHART

RJKB / OKIERABU

RNP RWY22

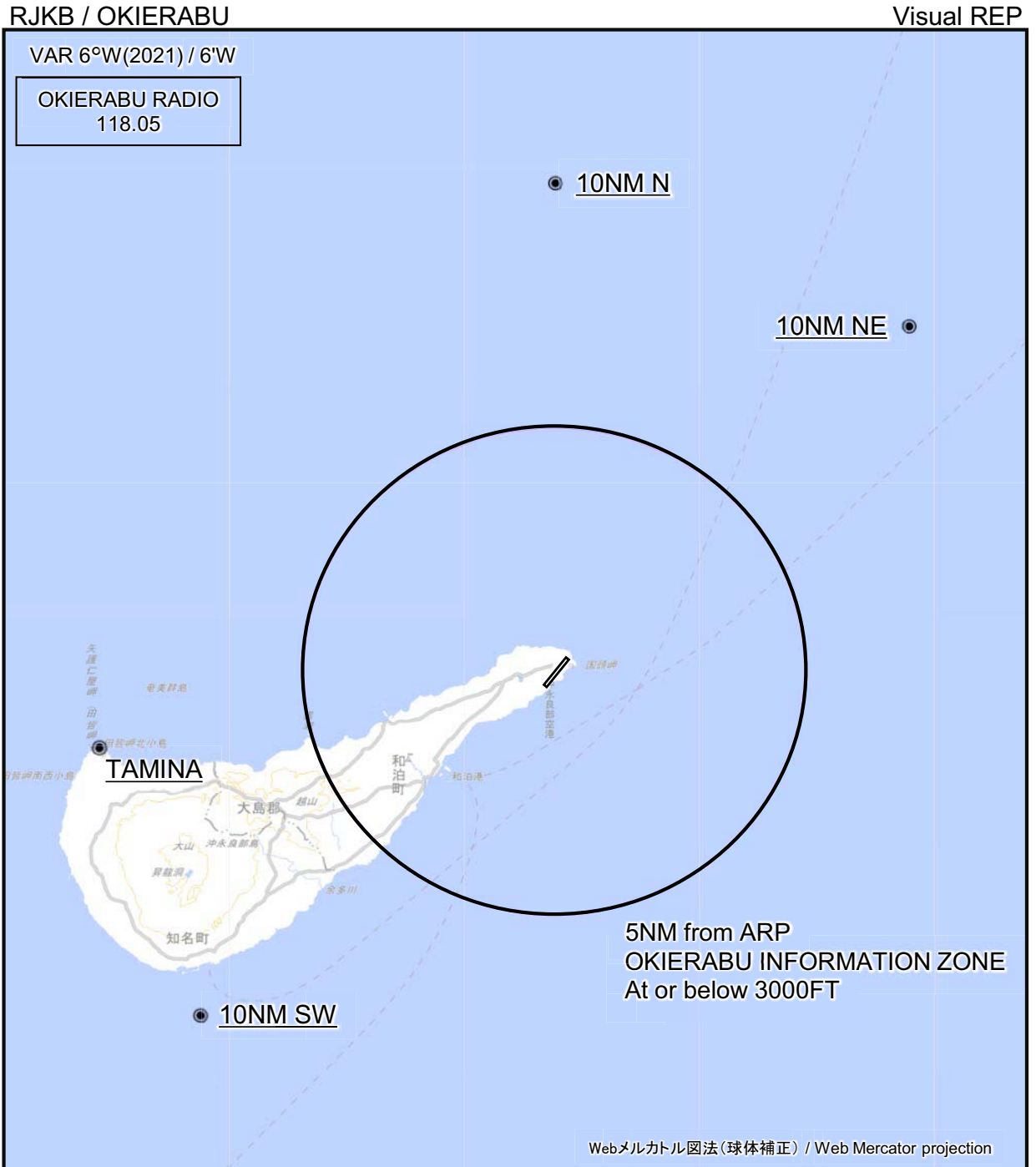
FAS DATA BLOCK

Operation type	0	LTP/FTP ellipsoidal height	+00546
SBAS service provider identifier	2	FPAP latitude	272526.3935N
Airport identifier	RJKB	FPAP longitude	1284159.1045E
Runway	22	Threshold crossing height	00015.0
Approach performance designator	0	TCH units selector	1
Route indicator		Glide path angle	03.00
Reference path data selector	0	Course width at threshold	105.00
Reference path ID	M22A	∠ length offset	0344
LTP/FTP latitude	272611.9555N	HAL	40.0
LTP/FTP longitude	1284233.7655E	VAL	50.0
CRC remainder	B03AD70A		

Required additional data

LTP/FTP orthometric height	23.9
----------------------------	------

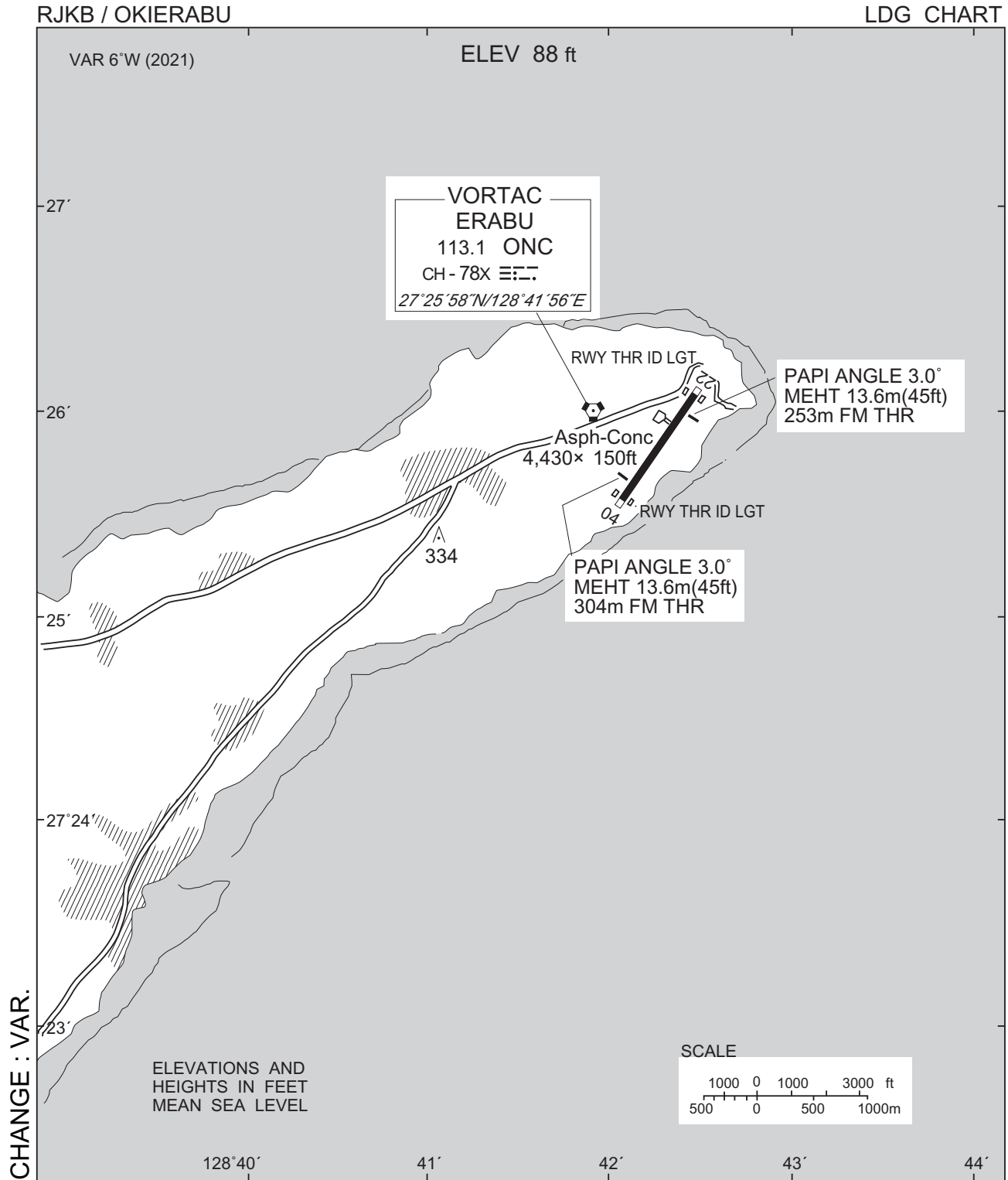
CHANGE : FAS DATA BLOCK and Required additional data established.



※図中に標高を示す数字がある場合、単位はメートル(m)である。The unit of measurement used to express elevation is meter(m).

CHANGE: VAR.

Call sign	BRG / DIST from ARP	Remarks
10NM N	000°T / 10.0NM	海上 Over the sea
10NM NE	045°T / 10.0NM	海上 Over the sea
田皆 Tamina	260°T / 9.2NM	岬 Cape
10NM SW	225°T / 10.0NM	海上 Over the sea



RJKB / OKIERABU

Minimum Vectoring Altitude CHART

CHANGE : Shape of segment. Minimum vectoring altitude.

