

AD 2 AERODROMES

RJKB AD 2.1 AERODROME LOCATION INDICATOR AND NAME

RJKB - OKIERABU

RJKB AD 2.2 AERODROME GEOGRAPHICAL AND ADMINISTRATIVE DATA

1	ARP coordinates and site at AD	272554N/1284220E 034° / 0.675km FM RWY 04 THR
2	Direction and distance from (city)	80nm SW from AMAMI AP
3	Elevation/ Reference temperature	88ft / 32°C(2004-2008)
4	Geoid undulation at AD ELEV PSN	Nil
5	MAG VAR/ Annual change	6°W(2021)/ 6°W
6	AD Administration, address, telephone, telefax, telex, AFS, e-mail and/or Web-site addresses	KAGOSHIMA PREF. PUBLIC AP. 4414-3, Kunigami,Wadamari-cho, Oshima-gun, Kagoshima Pref. 891-9101 JAPAN Tel:0997-92-0520 Fax:0997-92-0750
7	Types of traffic permitted(IFR/ VFR)	IFR/VFR
8	Remarks	Nil

RJKB AD 2.3 OPERATIONAL HOURS

1	AD Administration	2330 - 0930 (APR-SEP), 2330 - 0830 (OCT-MAR)
2	Customs and immigration	On request Customs: 099-260-3125 Immigration: 099-222-5658
3	Health and sanitation	Quarantine(human): On request(099-222-8670) Quarantine(animal, plant): Nil
4	AIS Briefing Office	Nil
5	ATS Reporting Office(ARO)	Nil
6	MET Briefing Office	H24 (FUKUOKA)
7	ATS	2330 - 0930(APR-SEP) 2330 - 0830(OCT-MAR) Remarks: AFIS provided by Kagoshima Airport Office.
8	Fuelling	2330 - 0930(APR-SEP) 2330 - 0830(OCT-MAR)
9	Handling	Nil
10	Security	Nil
11	De-icing	Nil
12	Remarks	Nil

RJKB AD 2.4 HANDLING SERVICES AND FACILITIES

1	Cargo-handling facilities	Nil
2	Fuel/ oil types	JET A-1
3	Fuelling facilities/ capacity	Fueling facilities : Fuel truck, Capacity : 24kl / h
4	De-icing facilities	Nil
5	Hangar space for visiting aircraft	Nil
6	Repair facilities for visiting aircraft	Nil
7	Remarks	Nil

RJKB AD 2.5 PASSENGER FACILITIES

1	Hotels	In the city.
2	Restaurants	Available, not continuous.
3	Transportation	Buses, taxies.
4	Medical facilities	In the city.
5	Bank and Post Office	In the city
6	Tourist Office	Not available.
7	Remarks	Nil

RJKB AD 2.6 RESCUE AND FIRE FIGHTING SERVICES

1	AD category for fire fighting	CAT 6
2	Rescue equipment	Chemical fire fighting truck x 2
3	Capability for removal of disabled aircraft	Nil
4	Remarks	Nil

RJKB AD 2.7 SEASONAL AVAILABILITY-CLEARING

1	Types of clearing equipment	Not Applicable
2	Clearance priorities	Nil
3	Remarks	Nil

RJKB AD 2.8 APRONS, TAXIWAYS AND CHECK LOCATIONS DATA

1	Apron surface and strength	Surface : Asphalt-Concrete, Strength : PCN 17/F/C/Y/T
2	Taxiway width, surface and strength	Width:18m, Surface:Asphalt-Concrete, Strength:PCN 17/F/C/Y/T
3	ACL and elevation	Not available
4	VOR checkpoints	Nil
5	INS checkpoints	Nil
6	Remarks	Nil

RJKB AD 2.9 SURFACE MOVEMENT GUIDANCE AND CONTROL SYSTEM AND MARKINGS

1	Use of aircraft stand ID signs, TWY guide lines and Visual docking/ parking guidance system of aircraft stands	Nil
2	RWY and TWY markings and LGT	RWY:04/22 (Marking) RWY designation, RWY CL, RWY THR, RWY middle point, Aiming point, TDZ, RWY side stripe (LGT) Nil TWY: (Marking) TWY CL, RWY HLDG PSN, TWY side stripe
3	Stop bars	Nil
4	Remarks	(Marking) Overrun area

RJKB AD 2.10 AERODROME OBSTACLES

- In Area2 See Obstacle data
- In Area3 To be developed

RJKB AD 2.11 METEOROLOGICAL INFORMATION PROVIDED

1	Associated MET Office	FUKUOKA
2	Hours of service MET Office outside hours	H24 (FUKUOKA)
3	Office responsible for TAF preparation Periods of validity	Nil
4	Trend forecast Interval of issuance	Nil
5	Briefing/ consultation provided	Briefing is available upon inquiry at FUKUOKA
6	Flight documentation Language(s) used	C En
7	Charts and other information available for briefing or consultation	S ₆ , U ₈₅ , U ₇ , U ₅ , U ₃ , U ₂₅ , U ₂ /T _F , P _S , P ₅ , P ₃ , P ₂₅ , P _{SWE} , P _{SWF} , P _{SWG} , P _{SWI} , P _{SWM} , P _{SW} (domestic), E, C, W _E , W _F , W _G , W _I , W, N
8	Supplementary equipment available for providing information	Nil
9	ATS units provided with information	RADIO
10	Additional information(limitation of service, etc.)	Nil

RJKB AD 2.12 RUNWAY PHYSICAL CHARACTERISTICS

Designations RWY NR	TRUE BRG	Dimensions of RWY(M)	Strength(PCN) and surface of RWY	THR coordinates THR geoid undulation	THR elevation and highest elevation of TDZ of precision APP RWY
1	2	3	4	5	6
04	34.15°	1350x45	PCN 17/F/C/Y/T Asphalt-Concrete	272535.70N1284206.12E	THR ELEV: 99ft
22	214.15°	1350x45	PCN 17/F/C/Y/T Asphalt-Concrete	272611.98N1284233.74E	THR ELEV: 79ft
Slope of RWY	Strip Dimensions(M)	RESA(Overrun) Dimensions(M)	Remarks		
7	10	11	14		
See AD2.24 AD chart	1470x150 1470x150	40x(MNM:113 MAX:150)* 26x(MNM:120 MAX:146)*	RWY Grooving: 1350m x 30m *For detail, ask airport administrator		

RJKB AD 2.13 DECLARED DISTANCES

RWY Designator	TORA (m)	TODA (m)	ASDA (m)	LDA (m)	Remarks
1	2	3	4	5	6
04	1350	1350	1350	1350	Nil
22	1350	1350	1350	1350	Nil

RJKB AD 2.14 APPROACH AND RUNWAY LIGHTING

RWY Designator	APCH LGT type LEN INTST	RTHL Color WBAR	PAPI (VASIS) Angle DIST FM THR MEHT	RTZL LEN	RCLL LEN Spacing Color INTST	REDL LEN Spacing Color INTST	RENL Color WBAR	STWL LEN Color
1	2	3	4	5	6	7	8	9
04	Nil	Nil	PAPI 3.0°/LEFT 304m 45ft	Nil	Nil	Nil	Nil	Nil
22	Nil	Nil	PAPI 3.0°/LEFT 253.4m 45ft	Nil	Nil	Nil	Nil	Nil
Remarks								
10								
RWY THR ID LGT for RWY 04/22 THR(Color : White)								

RJKB AD 2.15 OTHER LIGHTING, SECONDARY POWER SUPPLY

1	ABN/ IBN location, characteristics and hours of operation	Nil
2	LDI location and LGT Anemometer location and LGT	LDI : Nil Anemometer : RWY04 : 340m FM RWY 04 THR, LGTD RWY22 : 327m FM RWY 22 THR, LGTD
3	TWY edge and center line lighting	Nil
4	Secondary power supply/ switch-over time	Within 15 sec : PAPI, RWY THR ID LGT,
5	Remarks	WDI : AVBL

RJKB AD 2.16 HELICOPTER LANDING AREA

Nil

RJKB AD 2.17 ATS AIRSPACE

Designation and lateral limits		Vertical limits (ft)	Airspace classification	ATS unit call sign Language	Remarks
1		2	3	4	6
Okierabu Information Zone	Area within a radius of 5nm(9km) of Okierabu ARP	3,000ft or below	E	OKIERABU RADIO En	
Naha ACA	See ROAH attached chart		E	NAHA APP En	

RJKB AD 2.18 ATS COMMUNICATION FACILITIES

Service designation	Call sign	Frequency	Hours of operation	Remarks
1	2	3	4	5
APP	NAHA APPROACH	124.95MHZ 280.1MHZ	2330 - 0930 (APR-SEP) 2330 - 0830 (OCT-MAR)	
AFIS	OKIERABU RADIO	118.05MHZ	2330 - 0930 (APR-SEP) 2330 - 0830 (OCT-MAR)	Operated by Kagoshima Airport Office

RJKB AD 2.19 RADIO NAVIGATION AND LANDING AIDS

Type of aid (VOR declination)	ID	Frequency	Hours of operation	Position of transmitting antenna coordinates	Elevation of DME transmitting antenna	Remarks
1	2	3	4	5	6	7
VOR (5°W / 2014)	ONC	113.1MHZ	H24	272558.38N 1284156.27E		
TACAN	ONC	1165MHZ (CH-78X)	H24	272600.15N 1284156.09E	218ft	TACAN AZM unusable: 360°-020° beyond 30NM BLW 3,000ft 050°-085° beyond 30NM BLW 3,000ft 200°-210° beyond 30NM BLW 3,000ft 210°-220° beyond 25NM BLW 3,000ft 220°-250° beyond 30NM BLW 3,000ft 295°-305° beyond 30NM BLW 3,000ft 340°-350° beyond 35NM BLW 3,000ft
MSAS		1575.42MHZ	H24			Transmitting antennas are satellite based

RJKB AD 2.20 LOCAL TRAFFIC REGULATIONS

1. Airport regulations

Nil

2. Taxiing to and from stands

Nil

3. Parking area for small aircraft(General aviation)

Nil

4. Parking area for helicopters

Nil

5. Apron - taxiing during winter conditions

Nil

6. Taxiing - limitations

Nil

7. School and training flights - technical test flights - use of runways

Nil

8. Helicopter traffic - limitation

Nil

9. Removal of disabled aircraft from runways

Nil

RJKB AD 2.21 NOISE ABATEMENT PROCEDURES

Nil

RJKB AD 2.22 FLIGHT PROCEDURES

1.TAKE OFF MINIMA

	RWY	ACFT CAT	REDL & RCLL		REDL or RCLL or RCL marking		NIL (DAYTIME ONLY)	
			RVR	VIS	RVR	VIS	RVR	VIS
Multi-Engine ACFT with TKOF ALTN AP Filed	04	A, B, C	-	-	-	400m	-	500m
	22					400m		500m
OTHER	04	A, B, C	AVBL LDG MINIMA					
	22							

2.Lost communication procedures for arrival aircraft under radar navigational guidance

If radio communications with Naha Approach are lost for one minute, squawk Mode A/3 Code 7600 and;

- 1) Contact Okierabu Radio.
- 2) If unable, proceed in accordance with Visual Flight Rules.
- 3) If unable, proceed to Erabu VORTAC at the last assigned altitude, or 2,000 feet whichever is higher, and execute instrument approach.

NOTE: Procedures other than above will be issued when situation requires.

RJKB AD 2.23 ADDITIONAL INFORMATION

Nil

RJKB AD 2.24 CHARTS RELATED TO AN AERODROME

- Aerodrome/Heliport Chart
- Standard Departure Chart - Instrument (ERABU REVERSAL)
- Standard Departure Chart - Instrument (NEORI, AZEFU, SONNA, YUNTA-RNAV)
- Standard Departure Chart - Instrument (HORAI-RNAV)
- Standard Arrival Chart - Instrument (HACHA SOUTH, PINNE SOUTH)
- Standard Arrival Chart - Instrument (HACHA NORTH, HACHA EAST, PINNE NORTH, PINNE EAST)

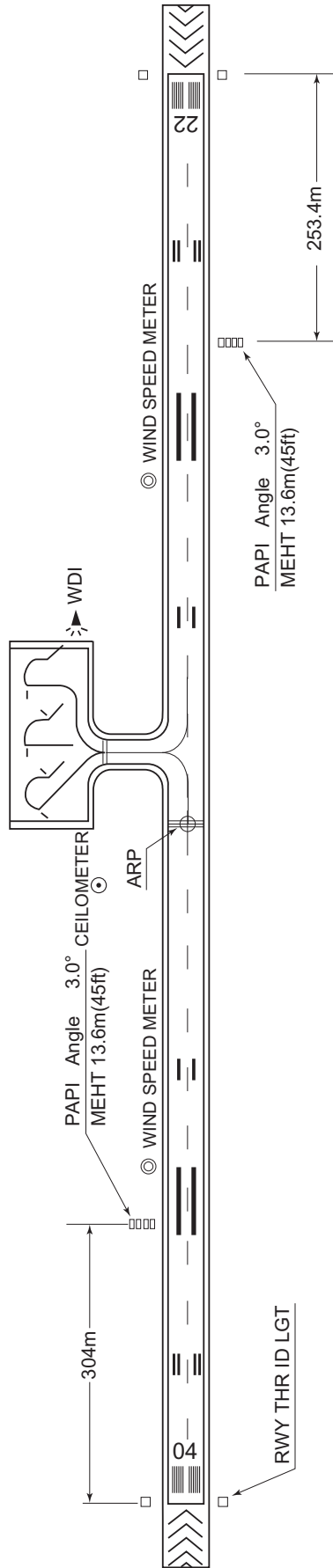
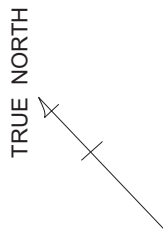
- Instrument Approach Chart (VOR RWY04)
- Instrument Approach Chart (RNP RWY04)
- Instrument Approach Chart (VOR RWY22)
- Instrument Approach Chart (RNP RWY22)
- Other Chart (Visual REP)
- Other Chart (LDG CHART)
- Other Chart (MVA CHART)

RJKB / OKIERABU

AD CHART

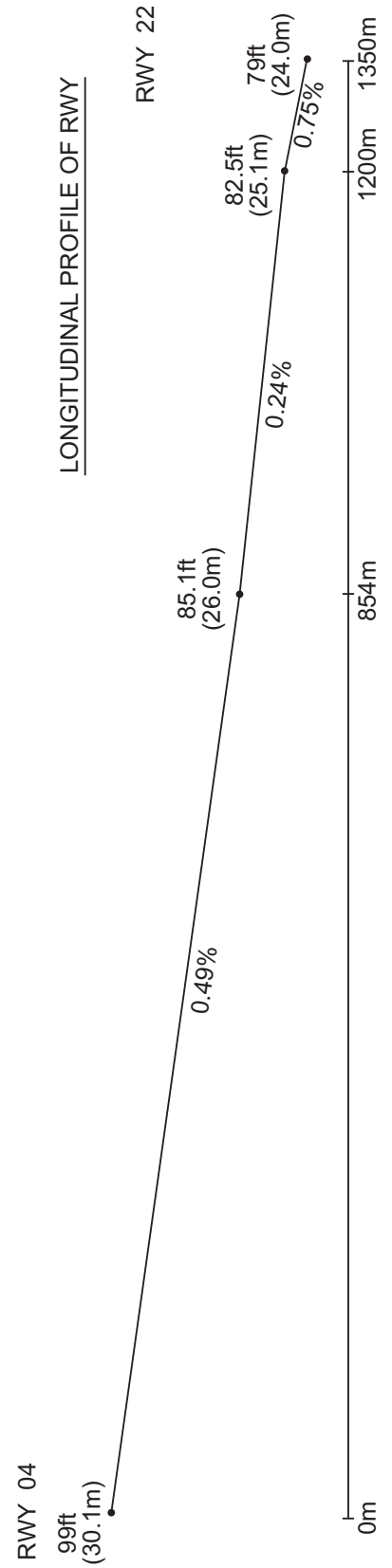
CHANGE : RWY THR elev.

OKIERABU AP



REMARKS : RWY GROOVING 1350m x 30m
WIDTH OF TWY 18m

LONGITUDINAL PROFILE OF RWY



STANDARD DEPARTURE CHART - INSTRUMENT

RJKB / OKIERABU

SID

ERABU REVERSAL TWO DEPARTURE

RWY04 : Climb RWY HDG to 500FT, turn right, via ONC R090 to ONC 12.0DME, turn right, via ONC R110 to ONC VORTAC.

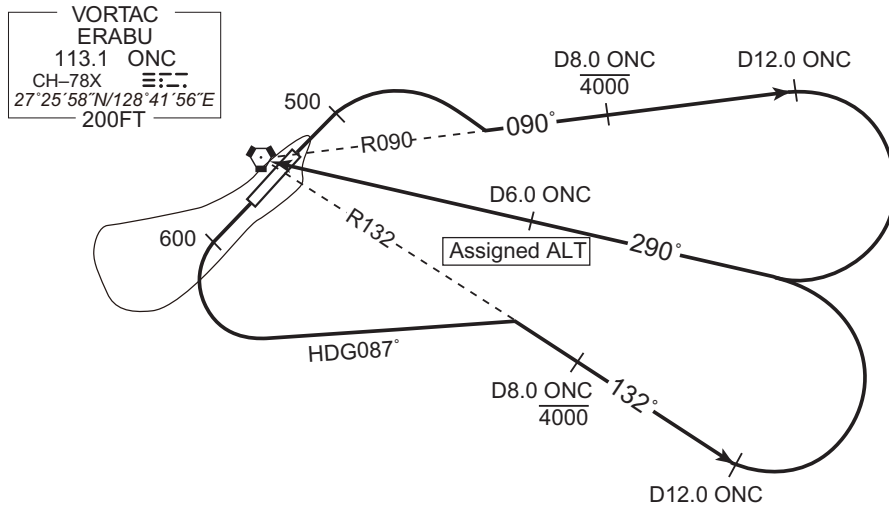
Cross ONC R090/8.0DME at or below 4000FT, cross ONC R110/6.0DME at assigned altitude.

RWY22 : Climb RWY HDG to 600FT, turn left HDG087 to intercept and proceed via ONC R132 to ONC 12.0DME, turn left, via ONC R110 to ONC VORTAC.

Cross ONC R132/8.0DME at or below 4000FT, cross ONC R110/6.0DME at assigned altitude.

Note RWY22 : 5.0% climb gradient required up to 600FT.

OBST ALT 145FT located at 0.2NM 257° FM end of RWY22.



CHANGE : Description of PROC name.

STANDARD DEPARTURE CHART - INSTRUMENT

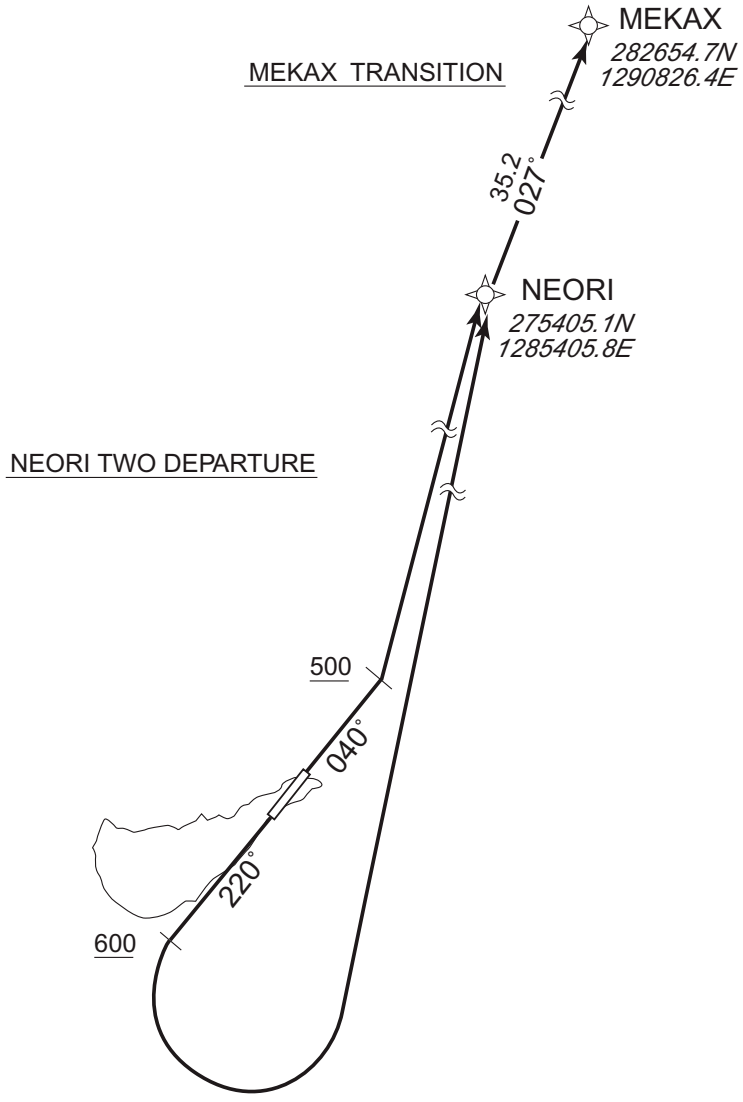
RJKB / OKIERABU

RNAV SID and TRANSITION

NEORI TWO DEPARTURE MEKAX TRANSITION	RNP1
---	------

Note GNSS required.

VAR 6° W



CHANGE : PROC name added. MEKAX TRANSITION added.

NEORI TWO DEPARTURE

RWY04: Climb on HDG040° at or above 500FT, turn left direct to NEORI.
 RWY22: Climb on HDG220° at or above 600FT, turn left direct to NEORI.
 Note RWY22 : 5.0% climb gradient required up to 600FT.
 OBST ALT 145FT located at 0.2NM 257° FM end of RWY22.

MEKAX TRANSITION

From NEORI to MEKAX.

STANDARD DEPARTURE CHART - INSTRUMENT

RJKB / OKIERABU

RNAV SID and TRANSITION

NEORI TWO DEPARTURE

RWY04

Serial Number	Path Descriptor	Waypoint Identifier	Fly Over	Course °M(°T)	Magnetic Variation	Distance (NM)	Turn Direction	Altitude (FT)	Speed (KIAS)	Vertical Angle	Navigation Specification
001	VA	-	-	040 (034.0)	-6.2	-	-	+500	-	-	RNP1
002	DF	NEORI	-	-	-6.2	-	L	-	-	-	RNP1

RWY22

Serial Number	Path Descriptor	Waypoint Identifier	Fly Over	Course °M(°T)	Magnetic Variation	Distance (NM)	Turn Direction	Altitude (FT)	Speed (KIAS)	Vertical Angle	Navigation Specification
001	VA	-	-	220 (214.0)	-6.2	-	-	+600	-	-	RNP1
002	DF	NEORI	-	-	-6.2	-	L	-	-	-	RNP1

MEKAX TRANSITION

Serial Number	Path Descriptor	Waypoint Identifier	Fly Over	Course °M(°T)	Magnetic Variation	Distance (NM)	Turn Direction	Altitude (FT)	Speed (KIAS)	Vertical Angle	Navigation Specification
001	IF	NEORI	-	-	-6.2	-	-	-	-	-	RNP1
002	TF	MEKAX	-	027 (021.0)	-6.2	35.2	-	-	-	-	RNP1

CHANGE : PROC name added. NEORI TWO DEPARTURE added. True bearing. VAR.

STANDARD DEPARTURE CHART - INSTRUMENT

RJKB / OKIERABU

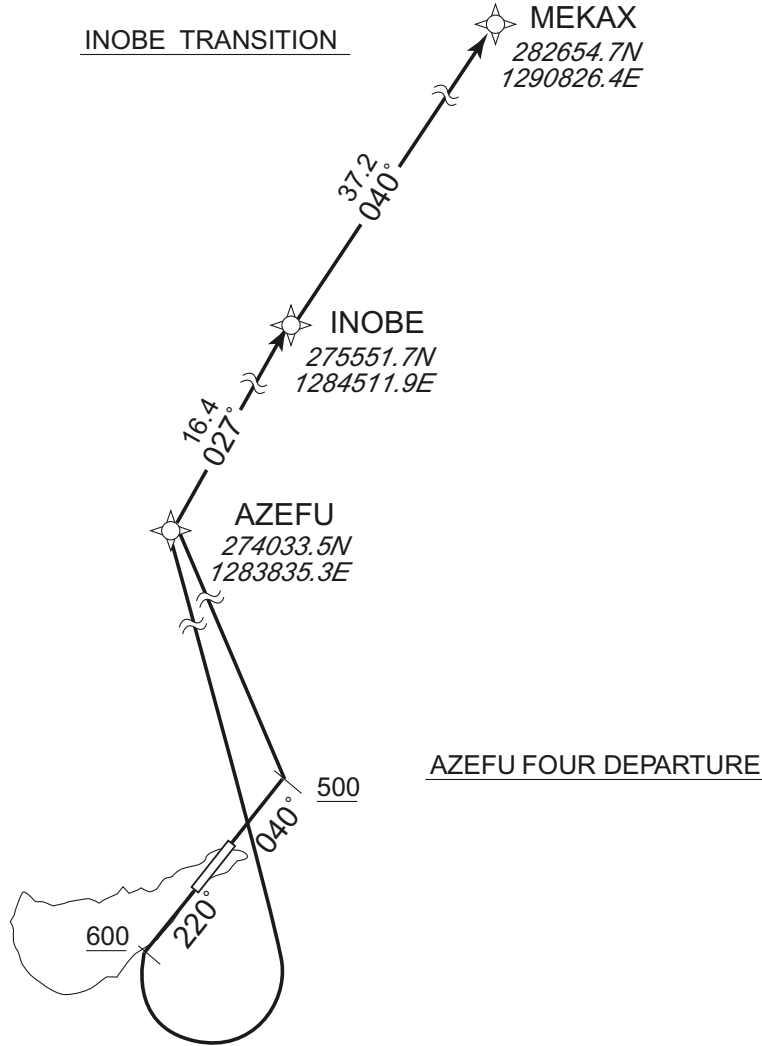
RNAV SID and TRANSITION

AZEFU FOUR DEPARTURE
INOBE TRANSITION

RNP1

Note GNSS required.

VAR 6° W



CHANGE : PROC name added. INOBE TRANSITION added. SID renamed(AZEFU FOUR DEPARTURE).
Course FM INOBE to MEKAX. ALT restriction at AZEFU deleted.

AZEFU FOUR DEPARTURE

RWY04: Climb on HDG040° at or above 500FT, turn left direct to AZEFU, to INOBE.

RWY22: Climb on HDG220° at or above 600FT, turn left direct to AZEFU, to INOBE.

Note RWY22 : 5.0% climb gradient required up to 600FT.

OBST ALT 145FT located at 0.2NM 257° FM end of RWY22.

INOBE TRANSITION

From INOBE to MEKAX.

STANDARD DEPARTURE CHART - INSTRUMENT

RJKB / OKIERABU

RNAV SID and TRANSITION

AZEFU FOUR DEPARTURE

RWY04

Serial Number	Path Descriptor	Waypoint Identifier	Fly Over	Course °M(°T)	Magnetic Variation	Distance (NM)	Turn Direction	Altitude (FT)	Speed (KIAS)	Vertical Angle	Navigation Specification
001	VA	—	—	040 (034.0)	-6.2	—	—	+500	—	—	RNP1
002	DF	AZEFU	—	—	-6.2	—	L	—	—	—	RNP1
003	TF	INOBE	—	027 (020.9)	-6.2	16.4	—	—	—	—	RNP1

RWY22

Serial Number	Path Descriptor	Waypoint Identifier	Fly Over	Course °M(°T)	Magnetic Variation	Distance (NM)	Turn Direction	Altitude (FT)	Speed (KIAS)	Vertical Angle	Navigation Specification
001	VA	—	—	220 (214.0)	-6.2	—	—	+600	—	—	RNP1
002	DF	AZEFU	—	—	-6.2	—	L	—	—	—	RNP1
003	TF	INOBE	—	027 (020.9)	-6.2	16.4	—	—	—	—	RNP1

INOBE TRANSITION

Serial Number	Path Descriptor	Waypoint Identifier	Fly Over	Course °M(°T)	Magnetic Variation	Distance (NM)	Turn Direction	Altitude (FT)	Speed (KIAS)	Vertical Angle	Navigation Specification
001	IF	INOBE	—	—	-6.2	—	—	—	—	—	RNP1
002	TF	MEKAX	—	040 (033.3)	-6.2	37.2	—	—	—	—	RNP1

CHANGE : PROC name added. AZEFU FOUR DEPARTURE added. VAR. True bearing. ALT restriction at AZEFU deleted.

STANDARD DEPARTURE CHART - INSTRUMENT

RJKB / OKIERABU

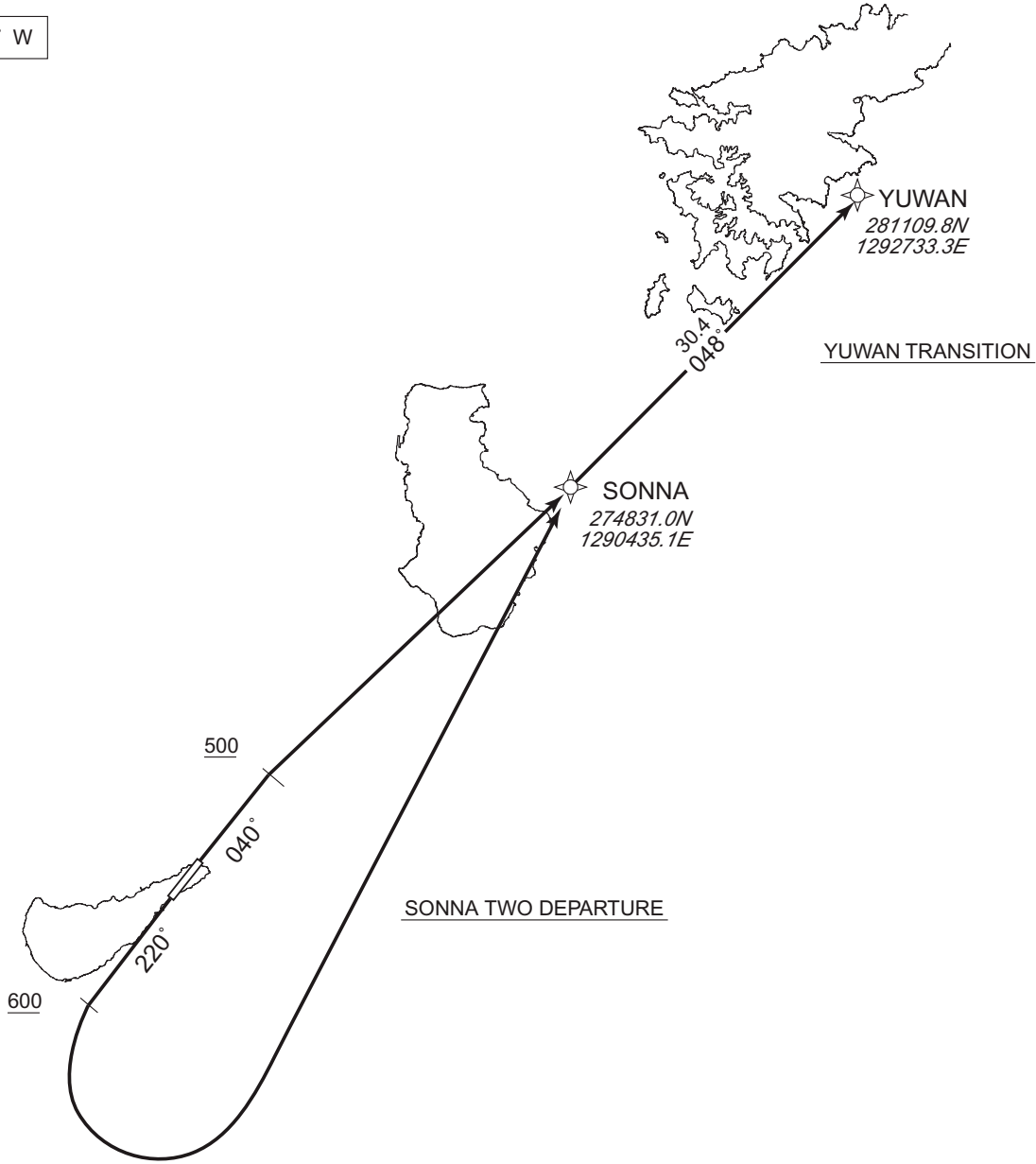
RNAV SID and TRANSITION

SONNA TWO DEPARTURE
YUWAN TRANSITION

RNP1

Note GNSS required.

VAR 6° W



CHANGE : PROC name added. YUWAN TRANSITION added.

SONNA TWO DEPARTURE

RWY04: Climb on HDG040° at or above 500FT, direct to SONNA.
 RWY22: Climb on HDG220° at or above 600FT, turn left direct to SONNA.
 Note RWY22 : 5.0% climb gradient required up to 600FT.
 OBST ALT 145FT located at 0.2NM 257° FM end of RWY22.

YUWAN TRANSITION

From SONNA to YUWAN.

STANDARD DEPARTURE CHART - INSTRUMENT

RJKB / OKIERABU

RNAV SID and TRANSITION

SONNA TWO DEPARTURE

RWY04

Serial Number	Path Descriptor	Waypoint Identifier	Fly Over	Course °M(°T)	Magnetic Variation	Distance (NM)	Turn Direction	Altitude (FT)	Speed (KIAS)	Vertical Angle	Navigation Specification
001	VA	—	—	040 (034.0)	-6.2	—	—	+500	—	—	RNP1
002	DF	SONNA	—	—	-6.2	—	—	—	—	—	RNP1

RWY22

Serial Number	Path Descriptor	Waypoint Identifier	Fly Over	Course °M(°T)	Magnetic Variation	Distance (NM)	Turn Direction	Altitude (FT)	Speed (KIAS)	Vertical Angle	Navigation Specification
001	VA	—	—	220 (214.0)	-6.2	—	—	+600	—	—	RNP1
002	DF	SONNA	—	—	-6.2	—	L	—	—	—	RNP1

YUWAN TRANSITION

Serial Number	Path Descriptor	Waypoint Identifier	Fly Over	Course °M(°T)	Magnetic Variation	Distance (NM)	Turn Direction	Altitude (FT)	Speed (KIAS)	Vertical Angle	Navigation Specification
001	IF	SONNA	—	—	-6.2	—	—	—	—	—	RNP1
002	TF	YUWAN	—	048 (041.8)	-6.2	30.4	—	—	—	—	RNP1

CHANGE : PROC name added. SONNA TWO DEPARTURE added. True bearing. VAR.

STANDARD DEPARTURE CHART - INSTRUMENT

RJKB / OKIERABU

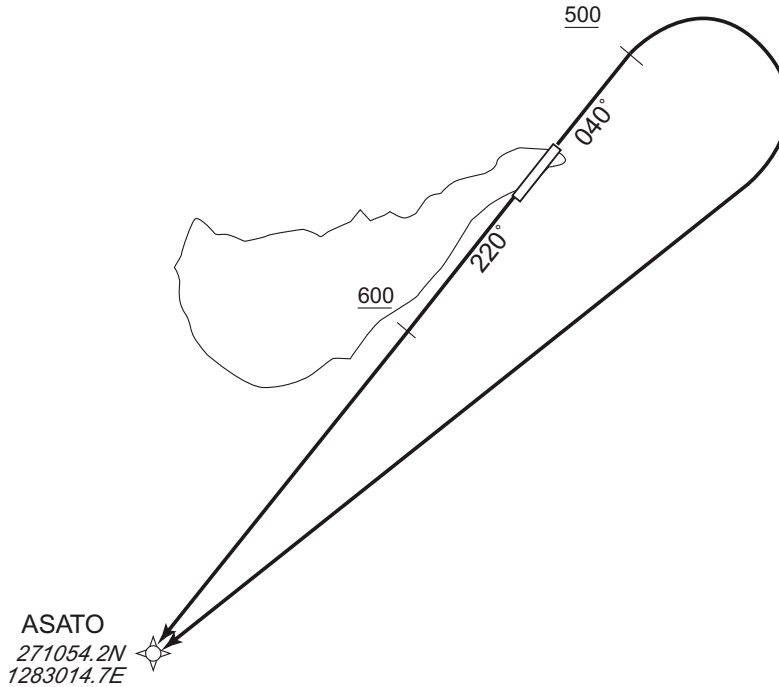
RNAV SID

YUNTA TWO DEPARTURE

RNP1

Note GNSS required.

VAR 6° W



RWY04: Climb on HDG040° at or above 500FT, turn right direct to ASATO.

RWY22: Climb on HDG220° at or above 600FT, direct to ASATO.

Note RWY22 : 5.0% climb gradient required up to 600FT.

OBST ALT 145FT located at 0.2NM 257° FM end of RWY22.

RWY04

Serial Number	Path Descriptor	Waypoint Identifier	Fly Over	Course °M(°T)	Magnetic Variation	Distance (NM)	Turn Direction	Altitude (FT)	Speed (KIAS)	Vertical Angle	Navigation Specification
001	VA	-	-	040 (034.0)	-6.2	-	-	+500	-	-	RNP1
002	DF	ASATO	-	-	-6.2	-	R	-	-	-	RNP1

RWY22

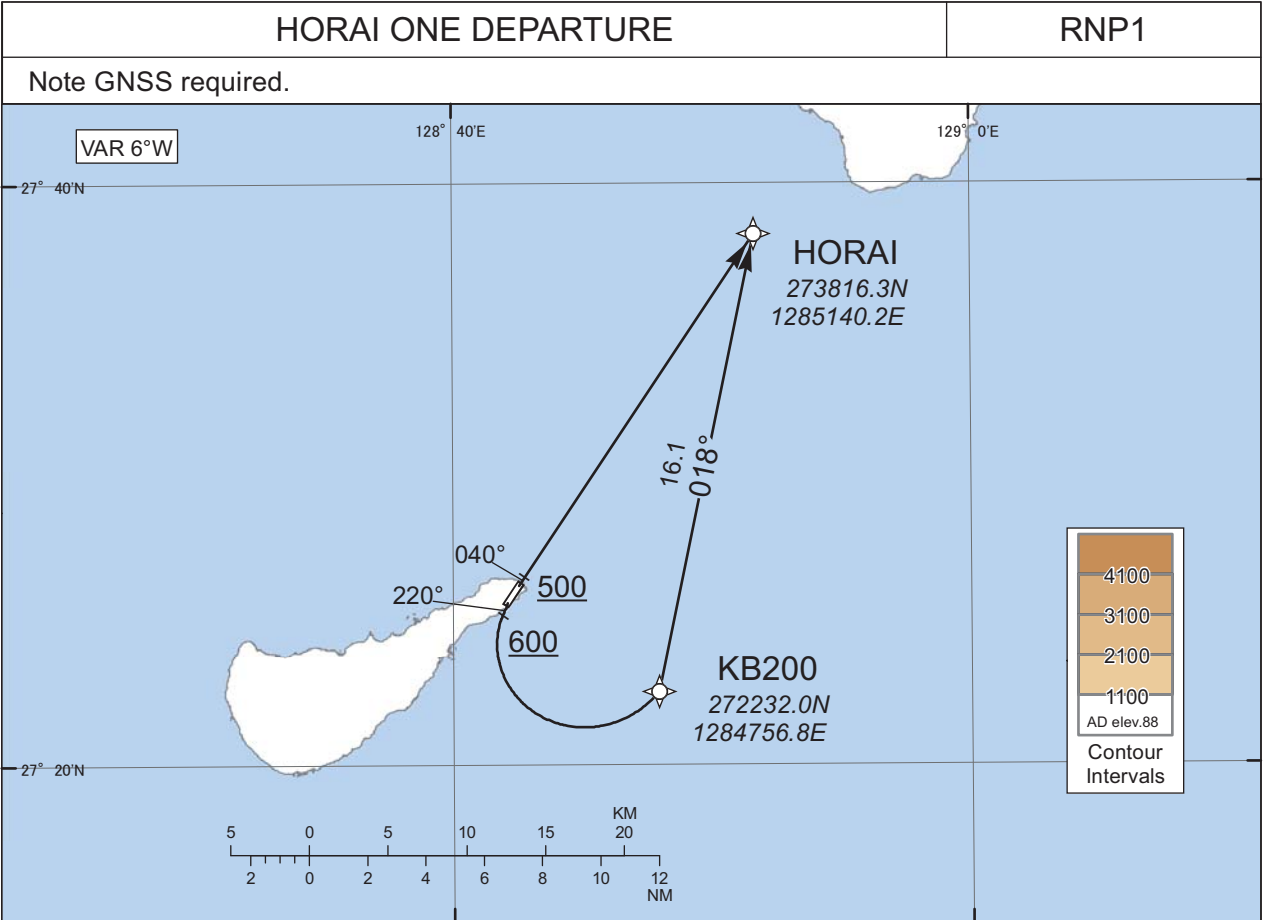
Serial Number	Path Descriptor	Waypoint Identifier	Fly Over	Course °M(°T)	Magnetic Variation	Distance (NM)	Turn Direction	Altitude (FT)	Speed (KIAS)	Vertical Angle	Navigation Specification
001	VA	-	-	220 (214.0)	-6.2	-	-	+600	-	-	RNP1
002	DF	ASATO	-	-	-6.2	-	-	-	-	-	RNP1

CHANGE : VAR. True bearing.

STANDARD DEPARTURE CHART - INSTRUMENT

RJKB / OKIERABU

RNAV SID



RWY04 : Climb on HDG 040° at or above 500FT, direct to HORAI.
RWY22 : Climb on HDG 220° at or above 600FT, turn left direct to KB200, to HORAI.

NOTE RWY22 : 5.0% climb gradient required up to 600FT.
OBST ALT 145FT located at 0.2NM 257° FM end of RWY22

RWY04

Serial Number	Path Descriptor	Waypoint Identifier	Fly Over	Course °M(°T)	Magnetic Variation	Distance (NM)	Turn Direction	Altitude (FT)	Speed (KIAS)	Vertical Angle	Navigation Specification
001	VA	-	-	040 (034.0)	-6.2	-	-	+500	-	-	RNP1
002	DF	HORAI	-	-	-6.2	-	-	-	-	-	RNP1

RWY22

Serial Number	Path Descriptor	Waypoint Identifier	Fly Over	Course °M(°T)	Magnetic Variation	Distance (NM)	Turn Direction	Altitude (FT)	Speed (KIAS)	Vertical Angle	Navigation Specification
001	VA	-	-	220 (214.0)	-6.2	-	-	+600	-	-	RNP1
002	DF	KB200	-	-	-6.2	-	L	-	-	-	RNP1
003	TF	HORAI	-	018 (011.8)	-6.2	16.1	-	-	-	-	RNP1

CHANGE : VAR. True bearing.

INTENTIONALLY LEFT BLANK

STANDARD ARRIVAL CHART - INSTRUMENT

RJKB / OKIERABU

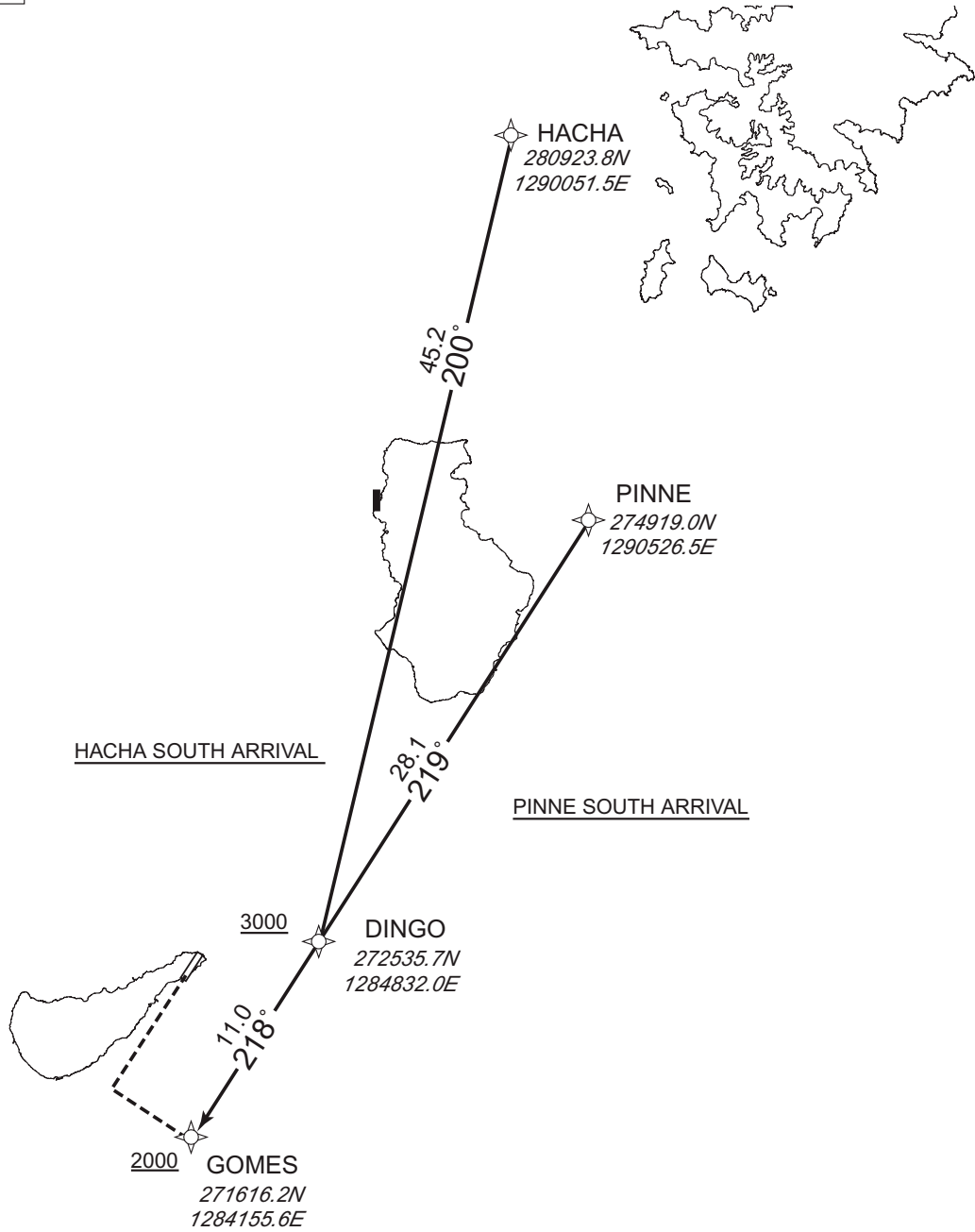
RNAV STAR RWY04

HACHA SOUTH ARRIVAL
PINNE SOUTH ARRIVAL

RNP1

Note GNSS required.

VAR 6°W



CHANGE : PROC course FM PINNE to DINGO.

STANDARD ARRIVAL CHART - INSTRUMENT

RJKB / OKIERABU

RNAV STAR RWY04

HACHA SOUTH ARRIVAL

From HACHA, to DINGO at or above 3000FT, to GOMES at or above 2000FT.

Serial Number	Path Descriptor	Waypoint Identifier	Fly Over	Course °M(°T)	Magnetic Variation	Distance (NM)	Turn Direction	Altitude (FT)	Speed (KIAS)	Vertical Angle	Navigation Specification
001	IF	HACHA	-	-	-6.2	-	-	-	-	-	RNP1
002	TF	DINGO	-	200 (194.0)	-6.2	45.2	-	+3000	-	-	RNP1
003	TF	GOMES	-	218 (212.2)	-6.2	11.0	-	+2000	-	-	RNP1

PINNE SOUTH ARRIVAL

From PINNE, to DINGO at or above 3000FT, to GOMES at or above 2000FT.

Serial Number	Path Descriptor	Waypoint Identifier	Fly Over	Course °M(°T)	Magnetic Variation	Distance (NM)	Turn Direction	Altitude (FT)	Speed (KIAS)	Vertical Angle	Navigation Specification
001	IF	PINNE	-	-	-6.2	-	-	-	-	-	RNP1
002	TF	DINGO	-	219 (212.3)	-6.2	28.1	-	+3000	-	-	RNP1
003	TF	GOMES	-	218 (212.2)	-6.2	11.0	-	+2000	-	-	RNP1

CHANGE : VAR. Course FM PINNE to DINGO.

STANDARD ARRIVAL CHART - INSTRUMENT

RJKB / OKIERABU

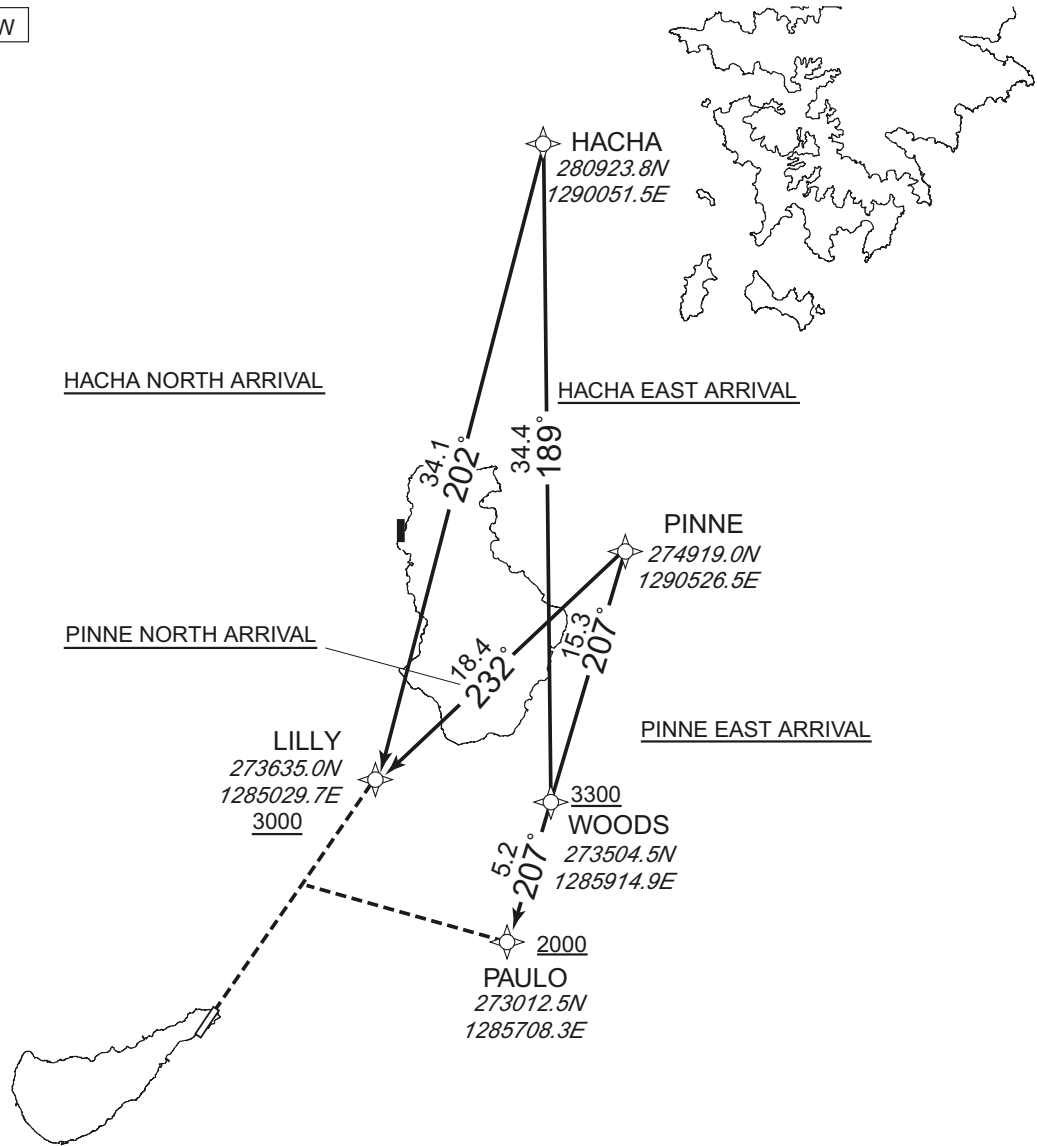
RNAV STAR RWY22

HACHA NORTH ARRIVAL / HACHA EAST ARRIVAL
PINNE NORTH ARRIVAL / PINNE EAST ARRIVAL

RNP1

Note GNSS required.

VAR 6°W



CHANGE : PROC course FM HACHA to WOODS.

STANDARD ARRIVAL CHART - INSTRUMENT

RJKB / OKIERABU

RNAV STAR RWY22

HACHA NORTH ARRIVAL

From HACHA, to LILLY at or above 3000FT.

Serial Number	Path Descriptor	Waypoint Identifier	Fly Over	Course °M(°T)	Magnetic Variation	Distance (NM)	Turn Direction	Altitude (FT)	Speed (KIAS)	Vertical Angle	Navigation Specification
001	IF	HACHA	-	-	-6.2	-	-	-	-	-	RNP1
002	TF	LILLY	-	202 (195.6)	-6.2	34.1	-	+3000	-	-	RNP1

HACHA EAST ARRIVAL

From HACHA, to WOODS at or above 3300FT, to PAULO at or above 2000FT.

Serial Number	Path Descriptor	Waypoint Identifier	Fly Over	Course °M(°T)	Magnetic Variation	Distance (NM)	Turn Direction	Altitude (FT)	Speed (KIAS)	Vertical Angle	Navigation Specification
001	IF	HACHA	-	-	-6.2	-	-	-	-	-	RNP1
002	TF	WOODS	-	189 (182.4)	-6.2	34.4	-	+3300	-	-	RNP1
003	TF	PAULO	-	207 (201.0)	-6.2	5.2	-	+2000	-	-	RNP1

PINNE NORTH ARRIVAL

From PINNE, to LILLY at or above 3000FT.

Serial Number	Path Descriptor	Waypoint Identifier	Fly Over	Course °M(°T)	Magnetic Variation	Distance (NM)	Turn Direction	Altitude (FT)	Speed (KIAS)	Vertical Angle	Navigation Specification
001	IF	PINNE	-	-	-6.2	-	-	-	-	-	RNP1
002	TF	LILLY	-	232 (226.2)	-6.2	18.4	-	+3000	-	-	RNP1

PINNE EAST ARRIVAL

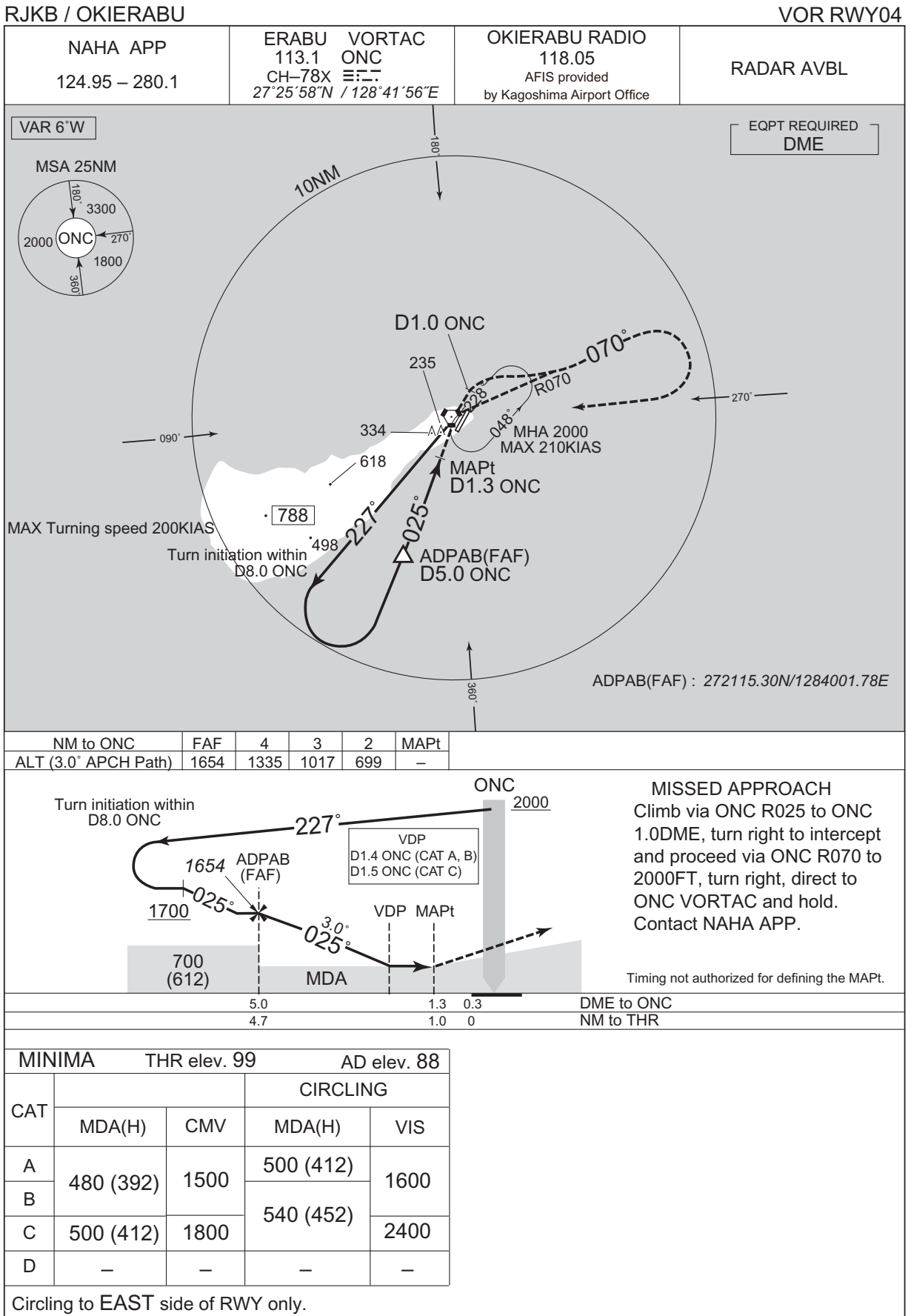
From PINNE, to WOODS at or above 3300FT, to PAULO at or above 2000FT.

Serial Number	Path Descriptor	Waypoint Identifier	Fly Over	Course °M(°T)	Magnetic Variation	Distance (NM)	Turn Direction	Altitude (FT)	Speed (KIAS)	Vertical Angle	Navigation Specification
001	IF	PINNE	-	-	-6.2	-	-	-	-	-	RNP1
002	TF	WOODS	-	207 (201.1)	-6.2	15.3	-	+3300	-	-	RNP1
003	TF	PAULO	-	207 (201.0)	-6.2	5.2	-	+2000	-	-	RNP1

CHANGE : VAR. Course FM HACHA to WOODS.

INSTRUMENT APPROACH CHART

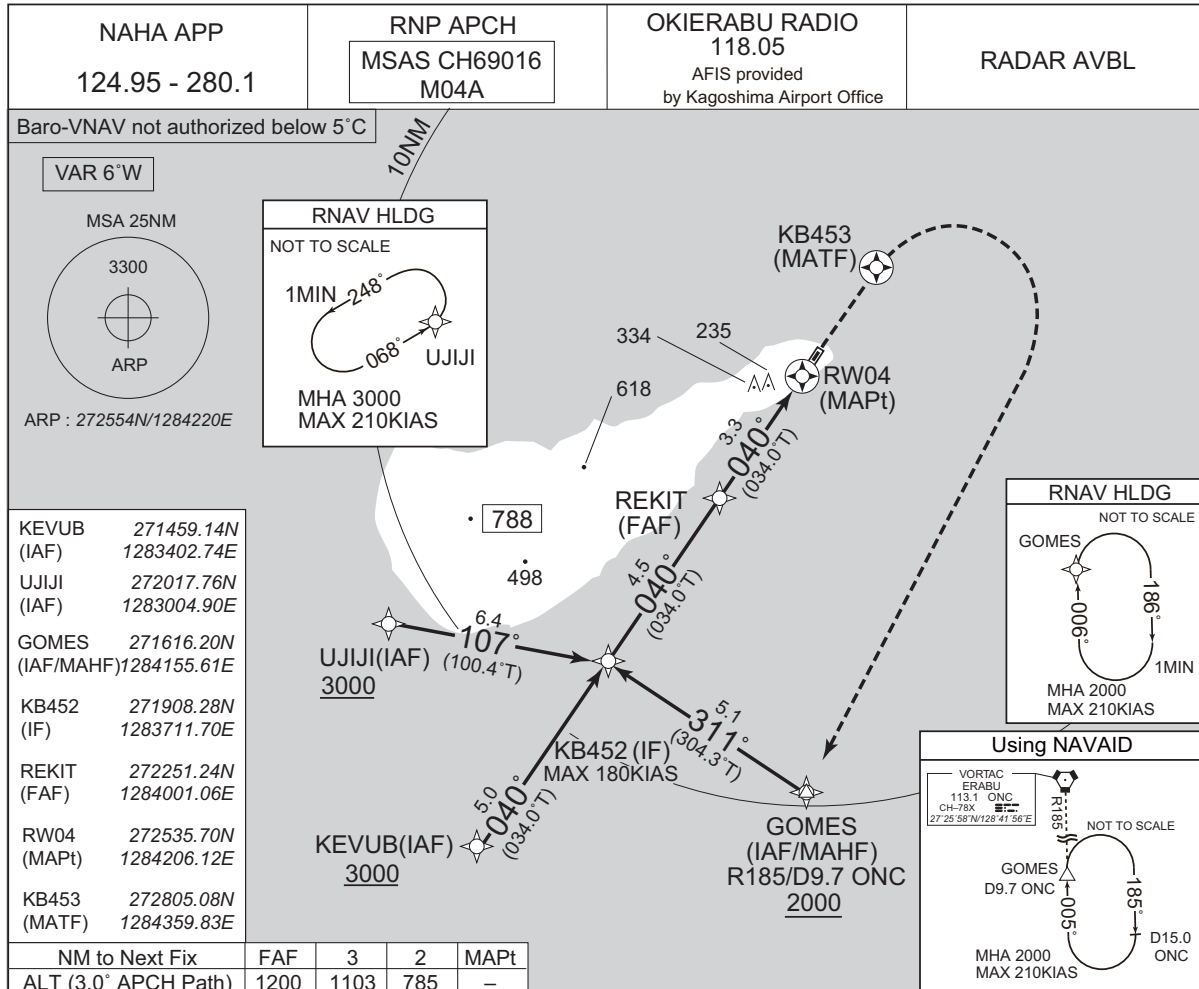
CHANGE : PROC renamed. ADPAB established. MOURY abolished. Missed APCH PROC. ALT restriction at CMPL Base Turn. VDP.
PROC course. DME to ONC. THR elev. MINIMA. VAR.



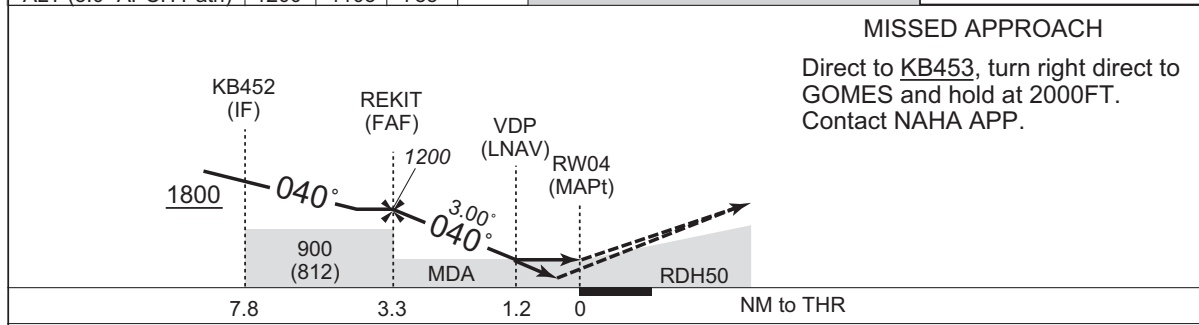
INSTRUMENT APPROACH CHART

RJKB / OKIERABU

RNP RWY04



CHANGE : PROC course. KEVUB, REKIT, KB452, KB453 established. KB450, KB451, RAGON abolished. MSAS CH added.
 MNM temperature for Baro-VNAV. Missed APCH for using VORTAC abolished. Missed APCH climb gradient MNM established.
 THR elev. MINIMA for LPV established. MINIMA for LNAV/VNAV.



Missed APCH climb gradient MNM 5.0%

MINIMA		THR elev. 99		AD elev. 88				
CAT	LPV		LNAV/VNAV		LNAV		CIRCLING	
	DA(H)	CMV	DA(H)	CMV	MDA(H)	CMV	MDA(H)	VIS
A	366 (267)	1500	404 (305)	1500	500 (412)	1500	500 (412)	1600
B	376 (277)						540 (452)	
C	386 (287)	1600		1800		1800	540 (452)	2400
D	-	-	-	-	-	-	-	-

MINIMA with Missed APCH climb gradient of 2.5% are not established.
Circling to EAST side of RWY only.

INSTRUMENT APPROACH CHART

RJKB / OKIERABU

RNP RWY04

FAS DATA BLOCK

Operation type	0	LTP/FTP ellipsoidal height	+00608
SBAS service provider identifier	2	FPAP latitude	272621.2280N
Airport identifier	RJKB	FPAP longitude	1284240.8210E
Runway	04	Threshold crossing height	00015.0
Approach performance designator	0	TCH units selector	1
Route indicator		Glide path angle	03.00
Reference path data selector	0	Course width at threshold	105.00
Reference path ID	M04A	∠ length offset	0344
LTP/FTP latitude	272535.6665N	HAL	40.0
LTP/FTP longitude	1284206.1585E	VAL	50.0
CRC remainder	78273A92		

Required additional data

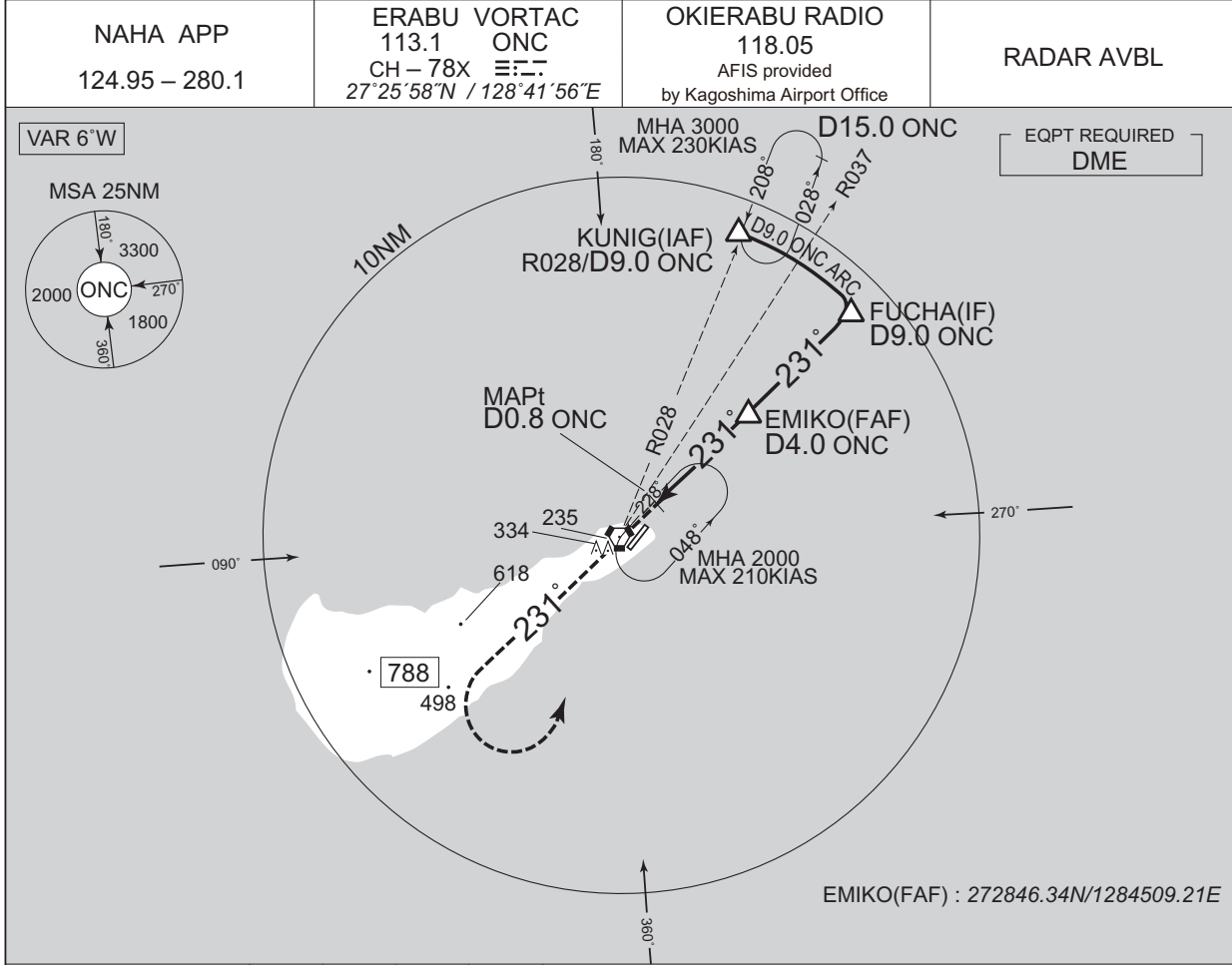
LTP/FTP orthometric height	30.1
----------------------------	------

CHANGE : FAS DATA BLOCK and Required additional data established.

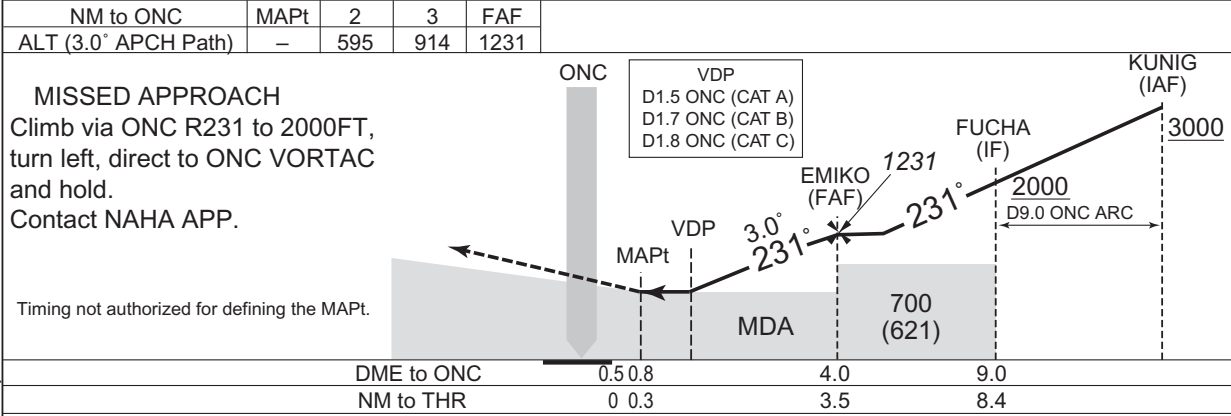
INSTRUMENT APPROACH CHART

RJKB / OKIERABU

VOR RWY22



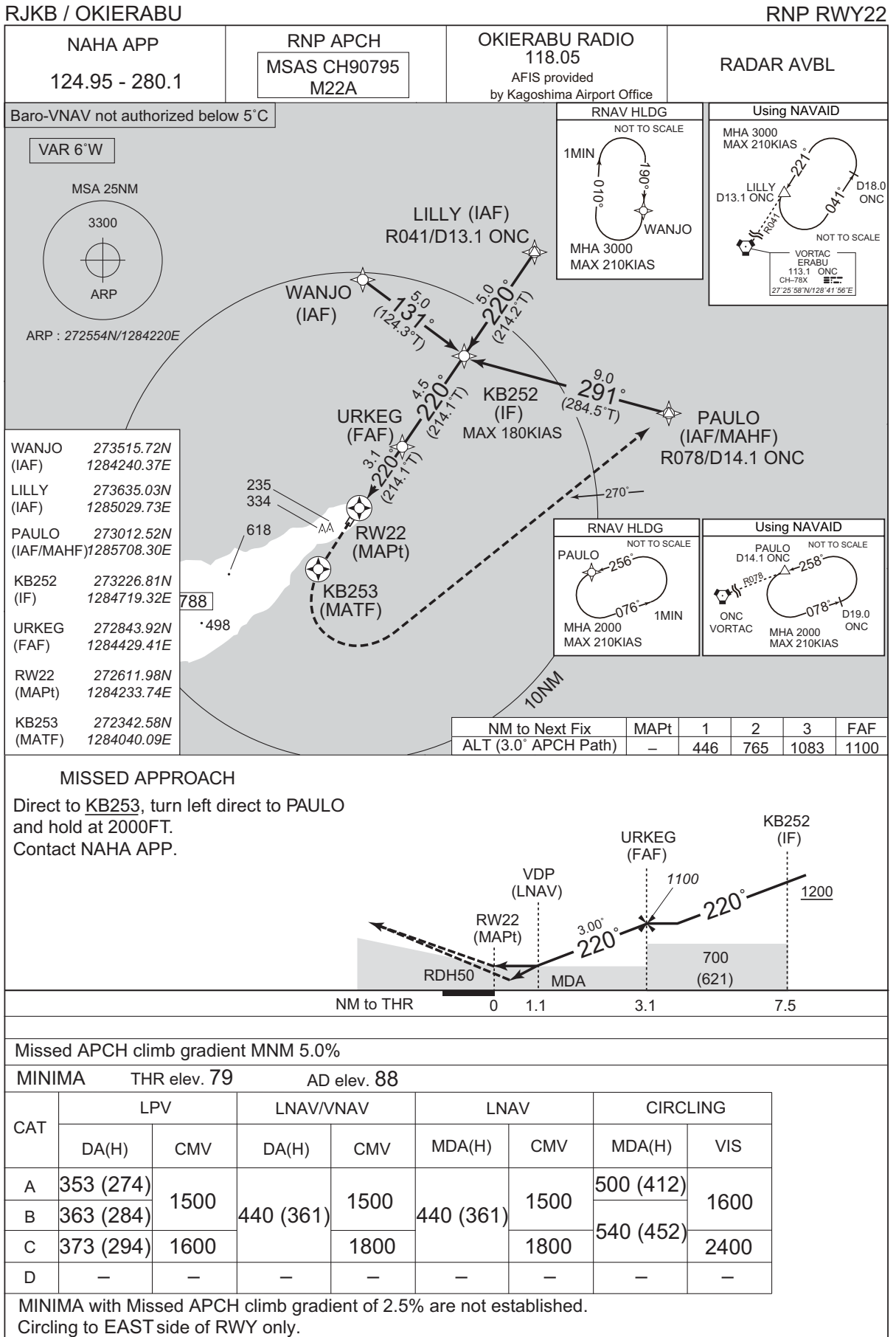
CHANGE : ALT(3.0° APCH Path). VDP. PROC ALT at EMIKO. NM to THR. VAR.



MINIMA		THR elev. 79	AD elev. 88	
CAT			CIRCLING	
	MDA(H)	CMV	MDA(H)	VIS
A	420 (341)	1500	500 (412)	1600
B	460 (381)		540 (452)	
C	490 (411)	1800		2400
D	-	-	-	-

Circling to EAST side of RWY only.

INSTRUMENT APPROACH CHART



CHANGE : PROC course. URKEG, KB252, KB253 established. KB250, ALDER abolished. MSAS CH added.
MNM temperature for Baro-VNAV. Missed APCH for using VORTAC abolished. Missed APCH climb gradient MNM established.
MINIMA for LPV established.

INSTRUMENT APPROACH CHART

RJKB / OKIERABU

RNP RWY22

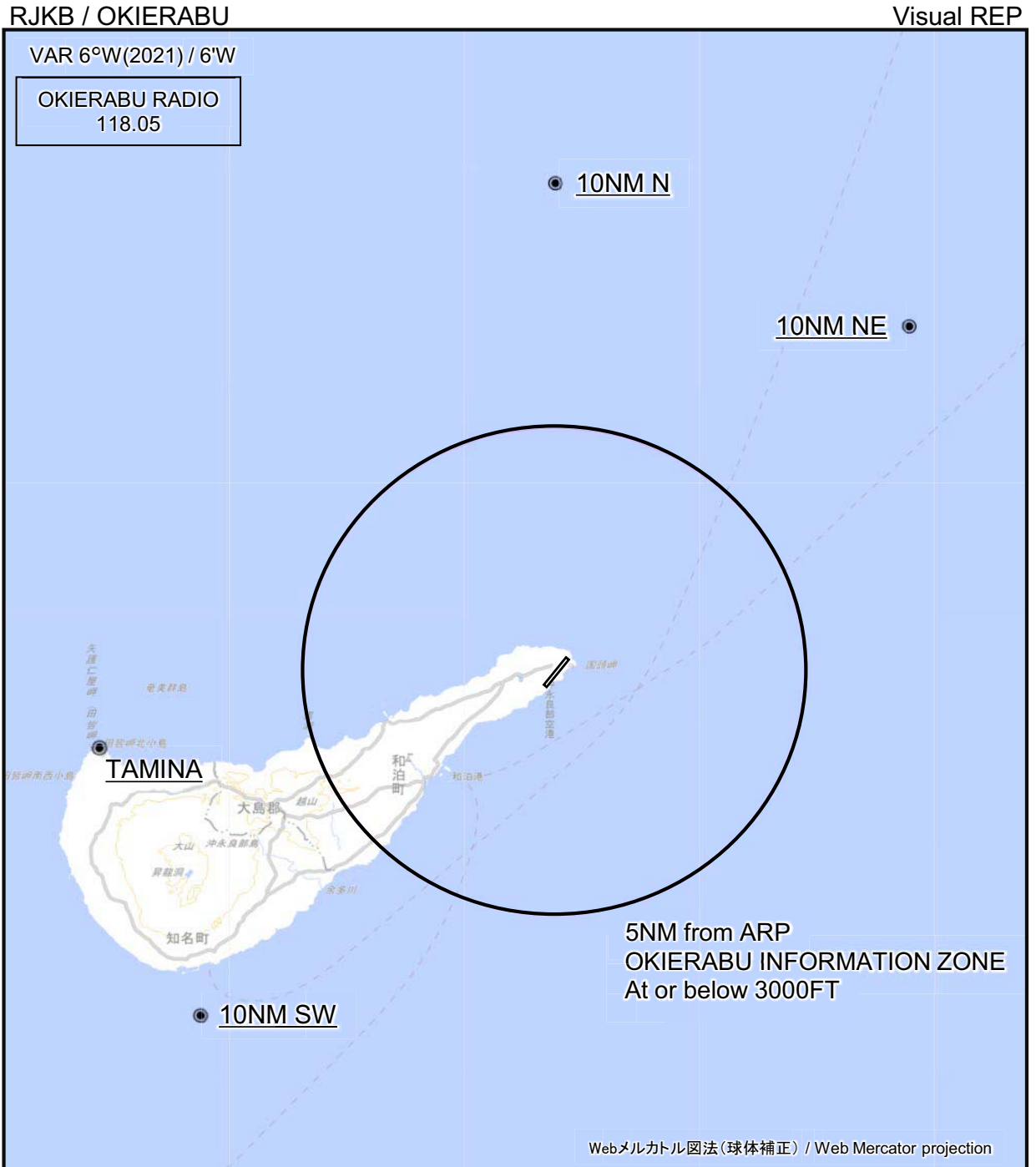
FAS DATA BLOCK

Operation type	0	LTP/FTP ellipsoidal height	+00546
SBAS service provider identifier	2	FPAP latitude	272526.3935N
Airport identifier	RJKB	FPAP longitude	1284159.1045E
Runway	22	Threshold crossing height	00015.0
Approach performance designator	0	TCH units selector	1
Route indicator		Glide path angle	03.00
Reference path data selector	0	Course width at threshold	105.00
Reference path ID	M22A	∠ length offset	0344
LTP/FTP latitude	272611.9555N	HAL	40.0
LTP/FTP longitude	1284233.7655E	VAL	50.0
CRC remainder	B03AD70A		

Required additional data

LTP/FTP orthometric height	23.9
----------------------------	------

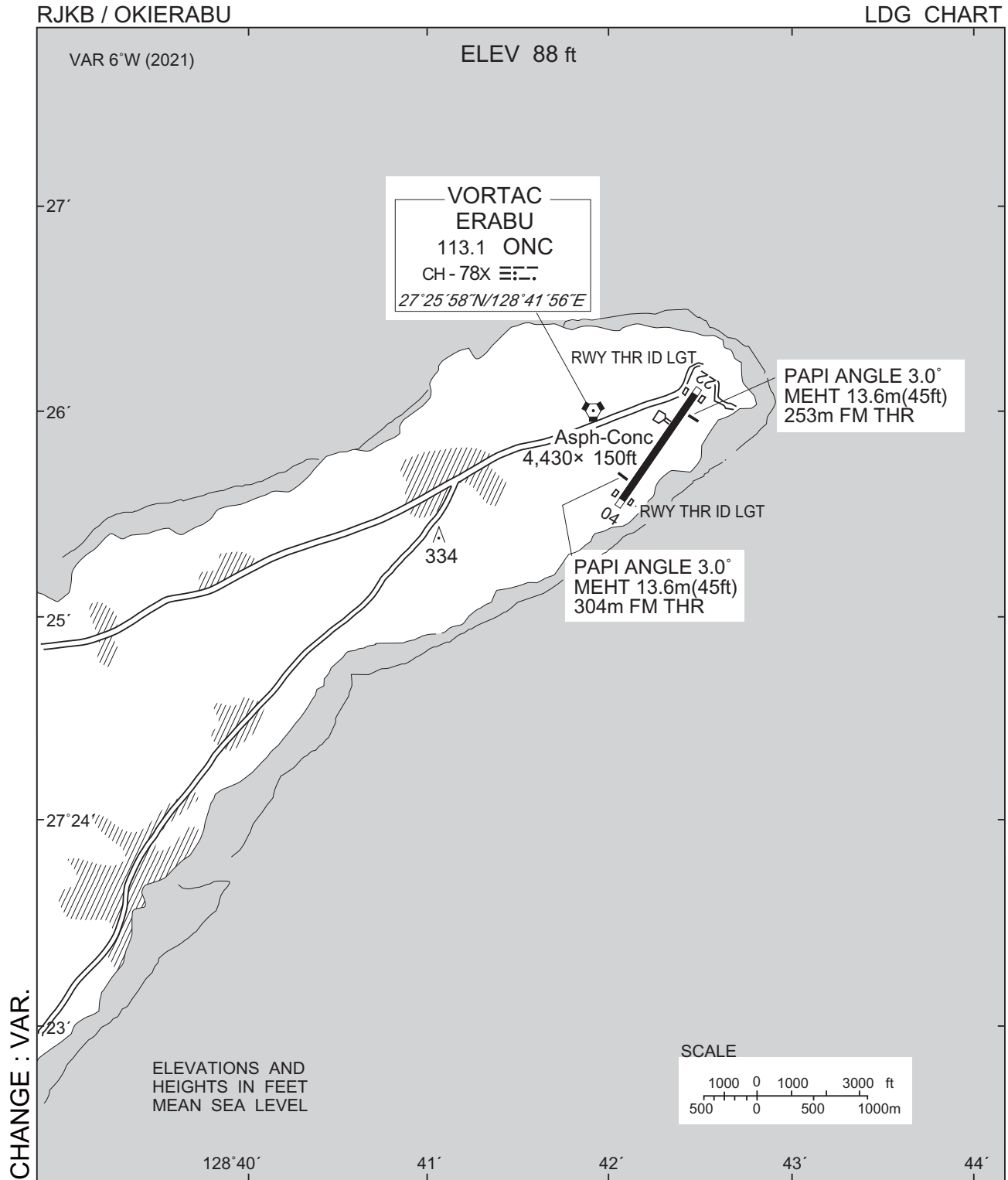
CHANGE : FAS DATA BLOCK and Required additional data established.



※図中に標高を示す数字がある場合、単位はメートル(m)である。The unit of measurement used to express elevation is meter(m).

CHANGE : VAR.

Call sign	BRG / DIST from ARP	Remarks
10NM N	000°T / 10.0NM	海上 Over the sea
10NM NE	045°T / 10.0NM	海上 Over the sea
田皆 Tamina	260°T / 9.2NM	岬 Cape
10NM SW	225°T / 10.0NM	海上 Over the sea



RJKB / OKIERABU

Minimum Vectoring Altitude CHART

CHANGE : Shape of segment. Minimum vectoring altitude.

