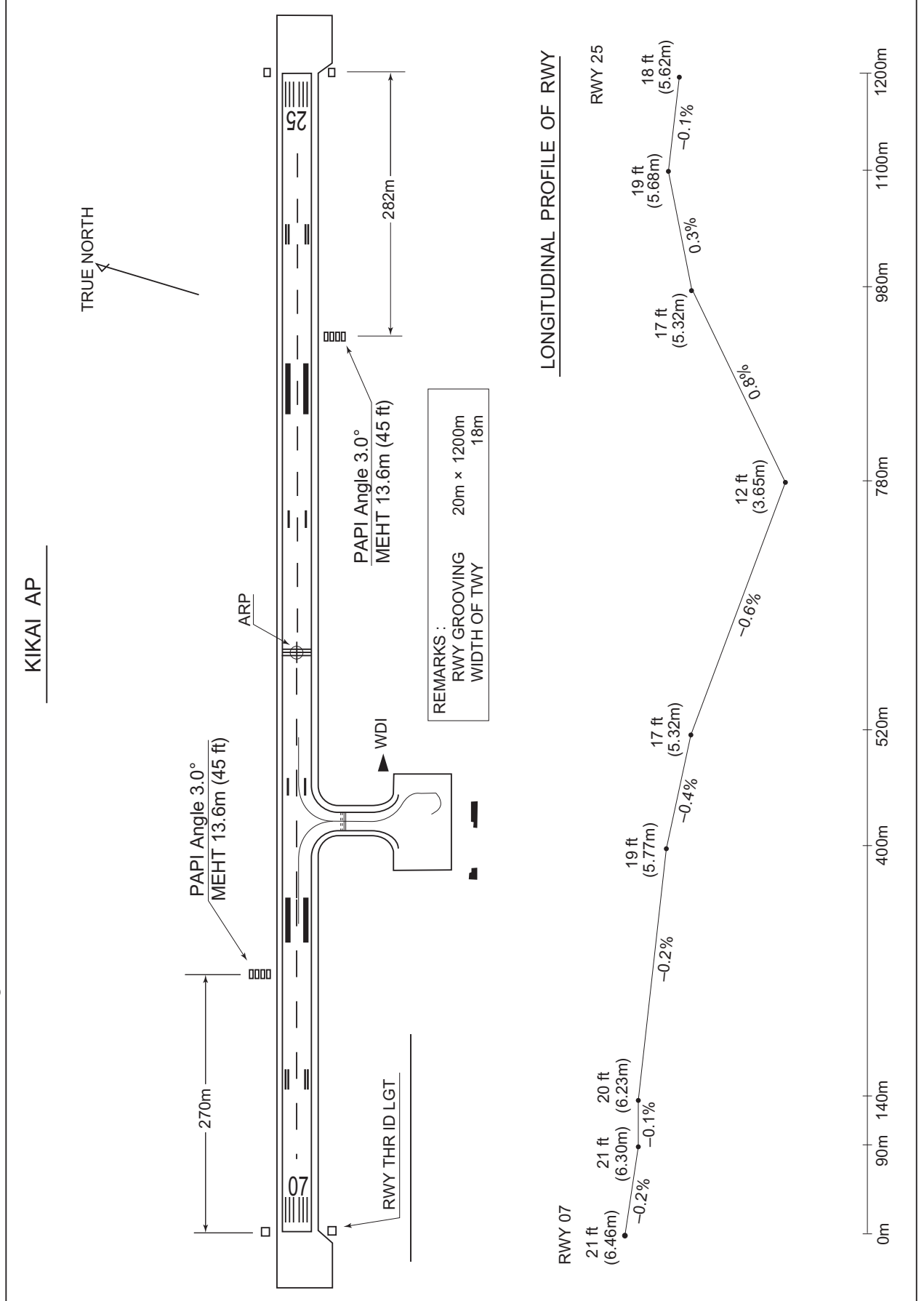


RJKI / KIKAI

AD CHART

CHANGE : Overrun area marking erased.



STANDARD DEPARTURE CHART -INSTRUMENT

RJKI / KIKAI

SID

KASARI TWO DEPARTURE

RWY07 : Turn left,...

RWY25 : Turn right,...

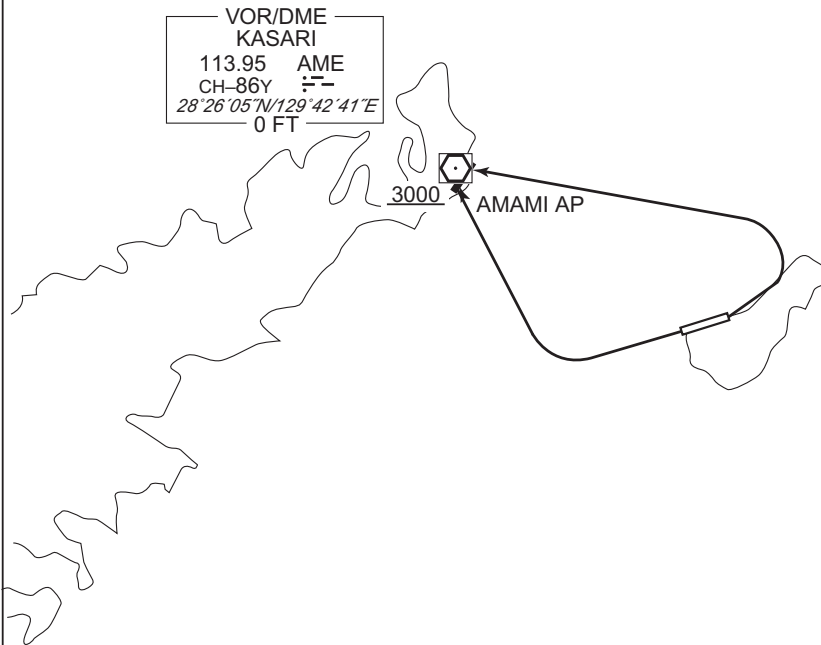
...direct to AME VOR/DME.

Cross AME VOR/DME at or above 3000FT.

Note RWY07 : 5.0% climb gradient required up to 700FT.

OBST ALT 558FT located at 2.4NM 088° FM end of RWY07.

CHANGE : Description of PROC name.



STANDARD DEPARTURE CHART -INSTRUMENT

RJKI / KIKAI

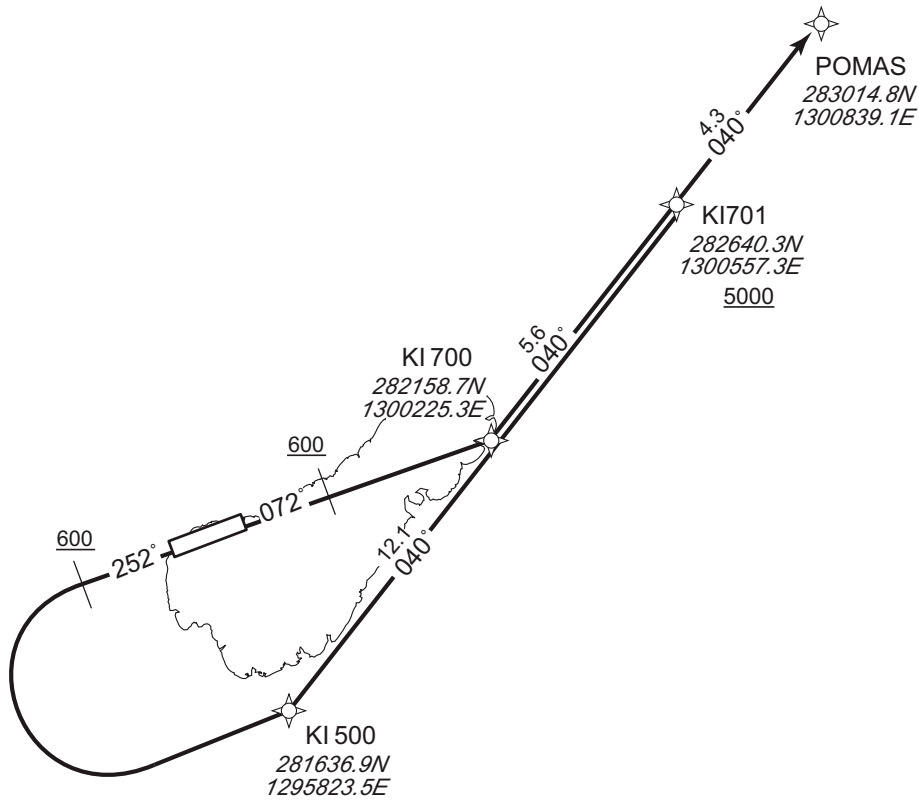
RNAV SID

POMAS TWO DEPARTURE

RNP1

Note GNSS required.

VAR 6°W



CHANGE : Description of PROC name and VAR.

RWY07 : Climb on HDG072° at or above 600FT,
direct to KI700, to KI701 at or above 5000FT, to POMAS.

RWY25 : Climb on HDG252° at or above 600FT,
turn left direct to KI500, to KI701 at or above 5000FT, to POMAS.

Note RWY07 : 5.0% climb gradient required up to 600FT.

OBST ALT 558FT located at 2.4NM 089° FM end of RWY07.

RWY25 : 5.0% climb gradient required up to 600FT.

OBST ALT 844FT located at 3.1NM 095° FM end of RWY25.

STANDARD DEPARTURE CHART -INSTRUMENT

RJKI / KIKAI

RNAV SID

POMAS TWO DEPARTURE

RWY07

Serial Number	Path Descriptor	Waypoint Identifier	Fly Over	Course °M(°T)	Magnetic Variation	Distance (NM)	Turn Direction	Altitude (FT)	Speed (KIAS)	Vertical Angle	Navigation Specification
001	VA	-	-	072 (065.7)	-6.1	-	-	+600	-	-	RNP1
002	DF	KI700	-	-	-6.1	-	-	-	-	-	RNP1
003	TF	KI701	-	040 (033.5)	-6.1	5.6	-	+5000	-	-	RNP1
004	TF	POMAS	-	040 (033.5)	-6.1	4.3	-	-	-	-	RNP1

RWY25

Serial Number	Path Descriptor	Waypoint Identifier	Fly Over	Course °M(°T)	Magnetic Variation	Distance (NM)	Turn Direction	Altitude (FT)	Speed (KIAS)	Vertical Angle	Navigation Specification
001	VA	-	-	252 (245.7)	-6.1	-	-	+600	-	-	RNP1
002	DF	KI500	-	-	-6.1	-	L	-	-	-	RNP1
003	TF	KI701	-	040 (033.5)	-6.1	12.1	-	+5000	-	-	RNP1
004	TF	POMAS	-	040 (033.5)	-6.1	4.3	-	-	-	-	RNP1

CHANGE : Navigation Specification(Basic RNP1 → RNP1).

STANDARD DEPARTURE CHART -INSTRUMENT

RJKI / KIKAI

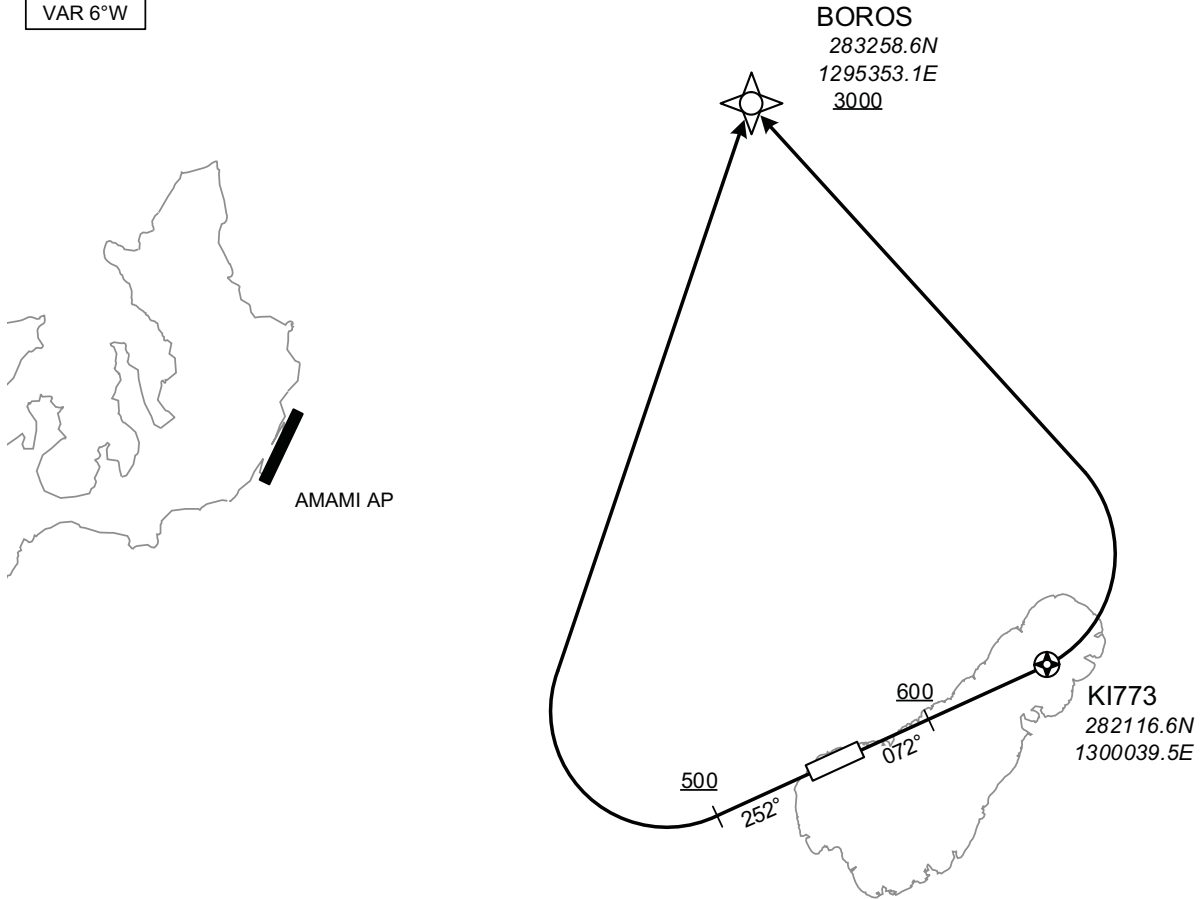
RNAV SID

BOROS ONE DEPARTURE

RNP1

Note GNSS required.

VAR 6°W



CHANGE : Description of PROC name and VAR.

RWY07 : Climb on HDG072° at or above 600FT, direct to KI773, turn left direct to BOROS at or above 3000FT.

RWY25 : Climb on HDG252° at or above 500FT, turn right direct to BOROS at or above 3000FT.

NOTE RWY07 : 5.0% climb gradient required up to 600FT.
OBST ALT 558FT located at 2.4NM 089° FM end of RWY07.

STANDARD DEPARTURE CHART -INSTRUMENT

RJKI / KIKAI

RNAV SID

BOROS ONE DEPARTURE

RWY07

Serial Number	Path Descriptor	Waypoint Identifier	Fly Over	Course °M(°T)	Magnetic Variation	Distance (NM)	Turn Direction	Altitude (FT)	Speed (KIAS)	Vertical Angle	Navigation Specification
001	VA	-	-	072 (065.7)	-6.1	-	-	+600	-	-	RNP1
002	DF	KI773	Y	-	-6.1	-	-	-	-	-	RNP1
003	DF	BOROS	-	-	-6.1	-	L	+3000	-	-	RNP1

RWY25

Serial Number	Path Descriptor	Waypoint Identifier	Fly Over	Course °M(°T)	Magnetic Variation	Distance (NM)	Turn Direction	Altitude (FT)	Speed (KIAS)	Vertical Angle	Navigation Specification
001	VA	-	-	252 (245.7)	-6.1	-	-	+500	-	-	RNP1
002	DF	BOROS	-	-	-6.1	-	R	+3000	-	-	RNP1

CHANGE : Navigation Specification(Basic RNP1 → RNP1).

STANDARD DEPARTURE CHART -INSTRUMENT

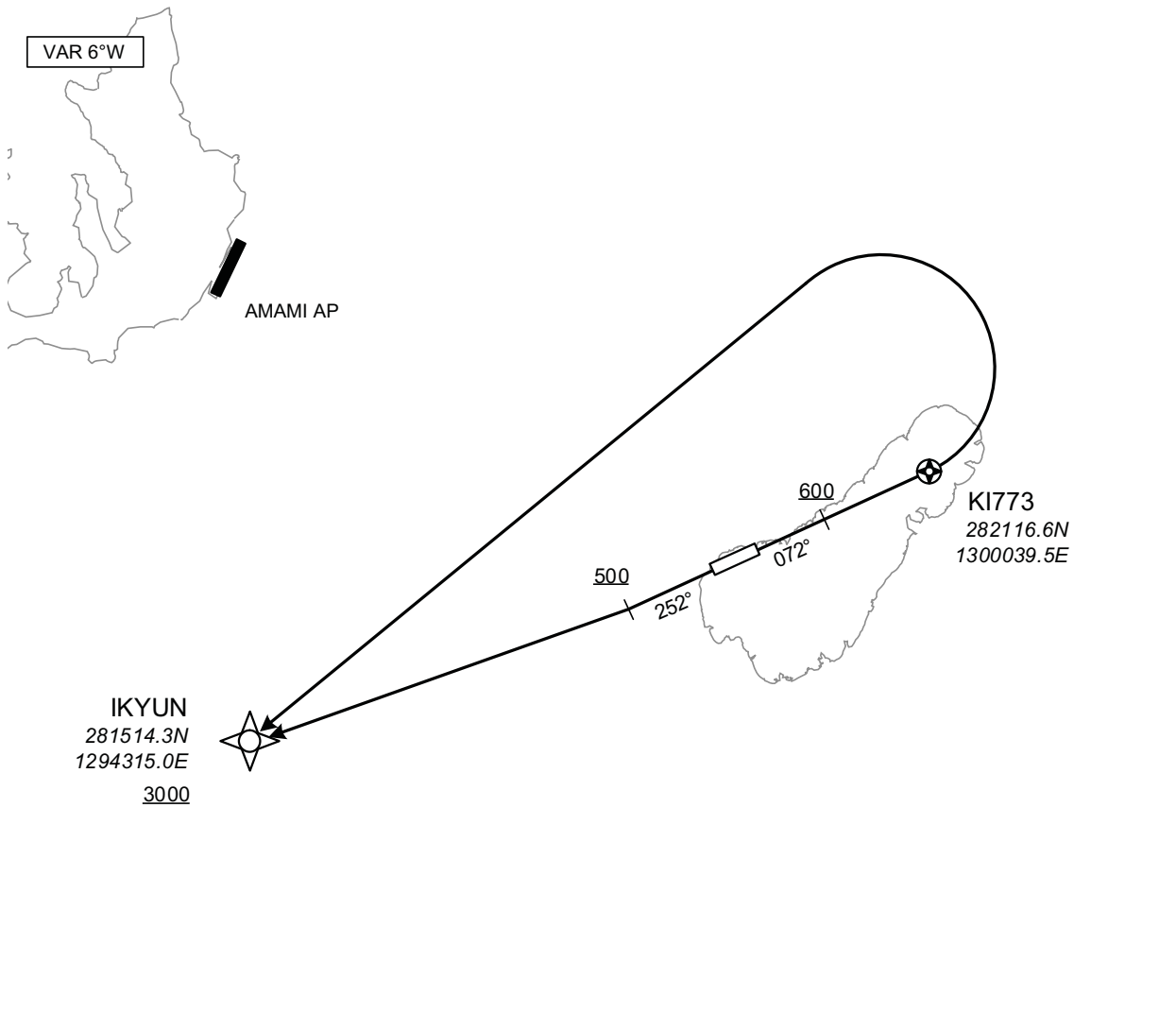
RJKI / KIKAI

RNAV SID

IKYUN ONE DEPARTURE

RNP1

Note GNSS required.



CHANGE : Description of PROC name and VAR.

RWY07 : Climb on HDG072° at or above 600FT, direct to KI773, turn left direct to IKYUN at or above 3000FT.

RWY25 : Climb on HDG252° at or above 500FT, direct to IKYUN at or above 3000FT.

NOTE RWY07 : 5.0% climb gradient required up to 600FT.
OBST ALT 558FT located at 2.4NM 089° FM end of RWY07.

STANDARD DEPARTURE CHART -INSTRUMENT

RJKI / KIKAI

RNAV SID

IKYUN ONE DEPARTURE

RWY07

Serial Number	Path Descriptor	Waypoint Identifier	Fly Over	Course °M(°T)	Magnetic Variation	Distance (NM)	Turn Direction	Altitude (FT)	Speed (KIAS)	Vertical Angle	Navigation Specification
001	VA	-	-	072 (065.7)	-6.1	-	-	+600	-	-	RNP1
002	DF	KI773	Y	-	-6.1	-	-	-	-	-	RNP1
003	DF	IKYUN	-	-	-6.1	-	L	+3000	-	-	RNP1

RWY25

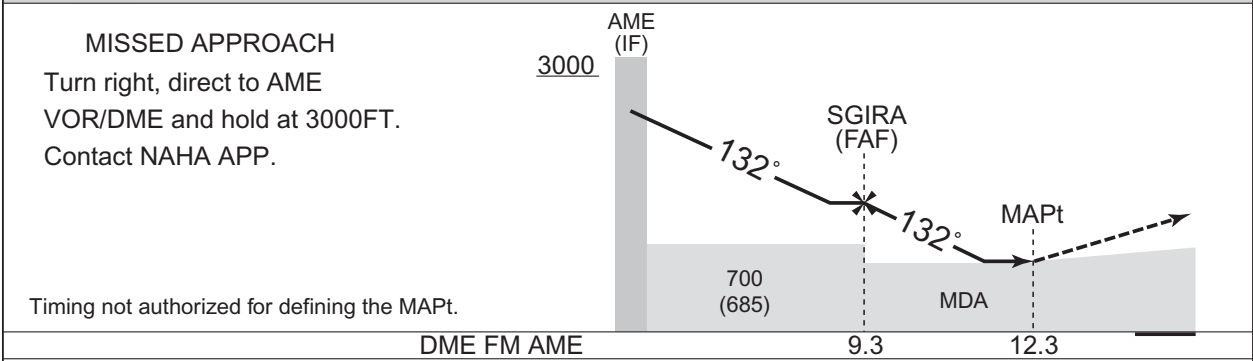
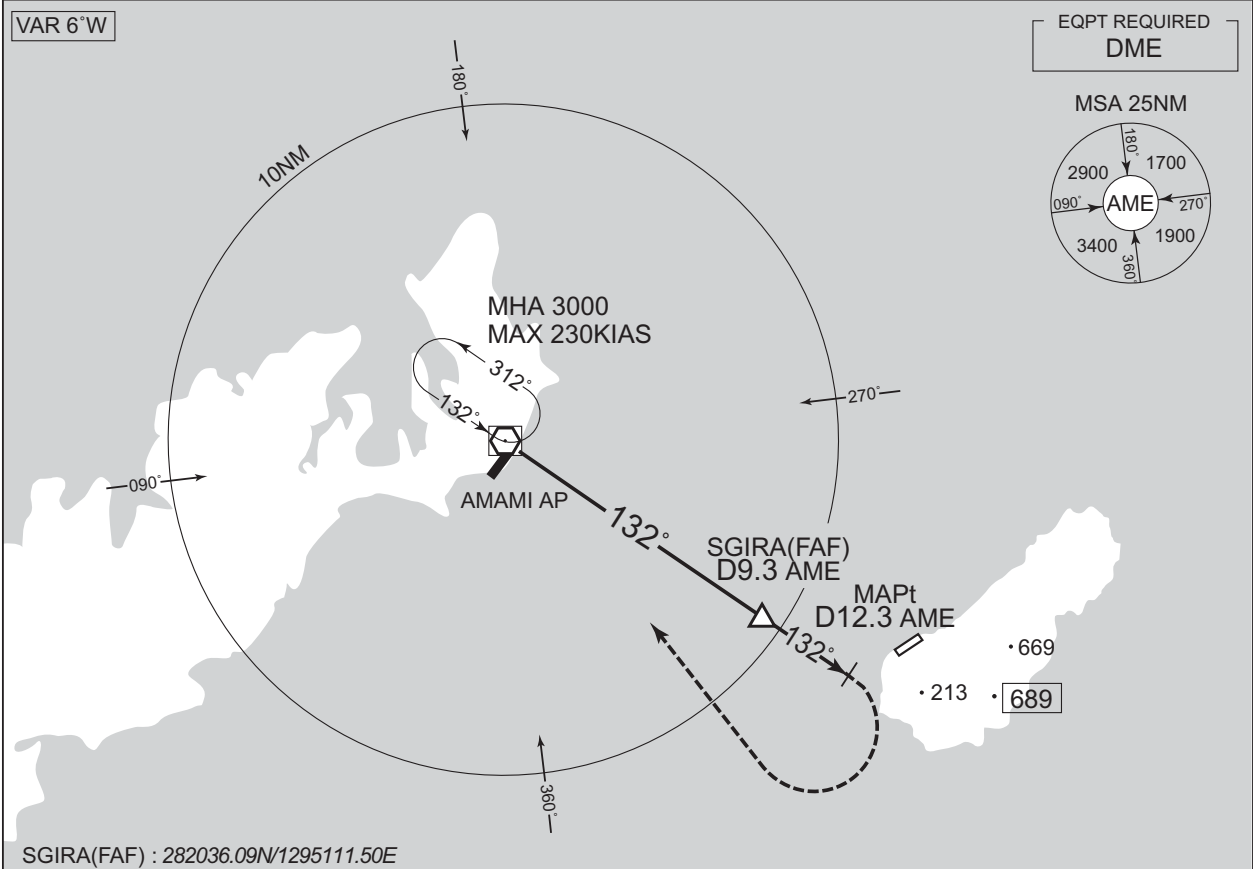
Serial Number	Path Descriptor	Waypoint Identifier	Fly Over	Course °M(°T)	Magnetic Variation	Distance (NM)	Turn Direction	Altitude (FT)	Speed (KIAS)	Vertical Angle	Navigation Specification
001	VA	-	-	252 (245.7)	-6.1	-	-	+500	-	-	RNP1
002	DF	IKYUN	-	-	-6.1	-	-	+3000	-	-	RNP1

CHANGE : Navigation Specification(Basic RNP1 → RNP1).

INSTRUMENT APPROACH CHART

RJKI / KIKAI VOR A

NAHA APP 124.95 – 280.1	KASARI VOR/DME 113.95 AME CH - 86Y 28°26'05"N/129°42'41"E	KIKAI RADIO 118.0 AFIS provided by Kagoshima Airport Office	RADAR AVBL
-----------------------------------	---	---	-------------------



MISSED APPROACH
Turn right, direct to AME
VOR/DME and hold at 3000FT.
Contact NAHA APP.

Missed APCH climb gradient MNM 3.0%

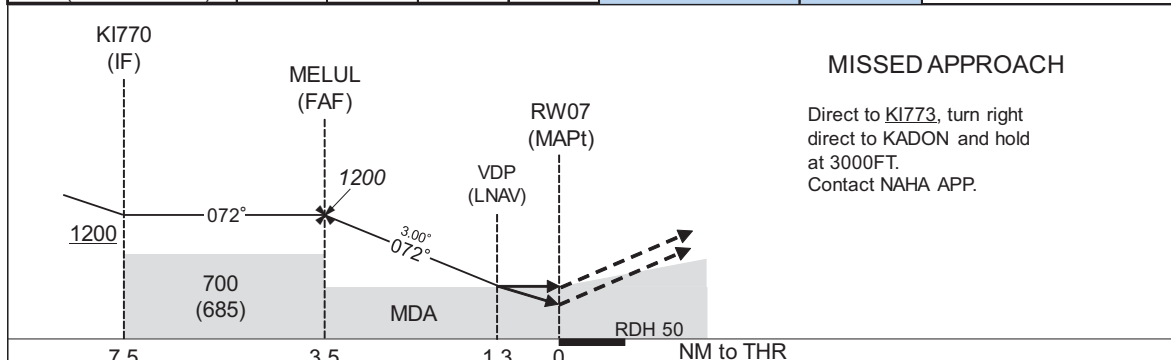
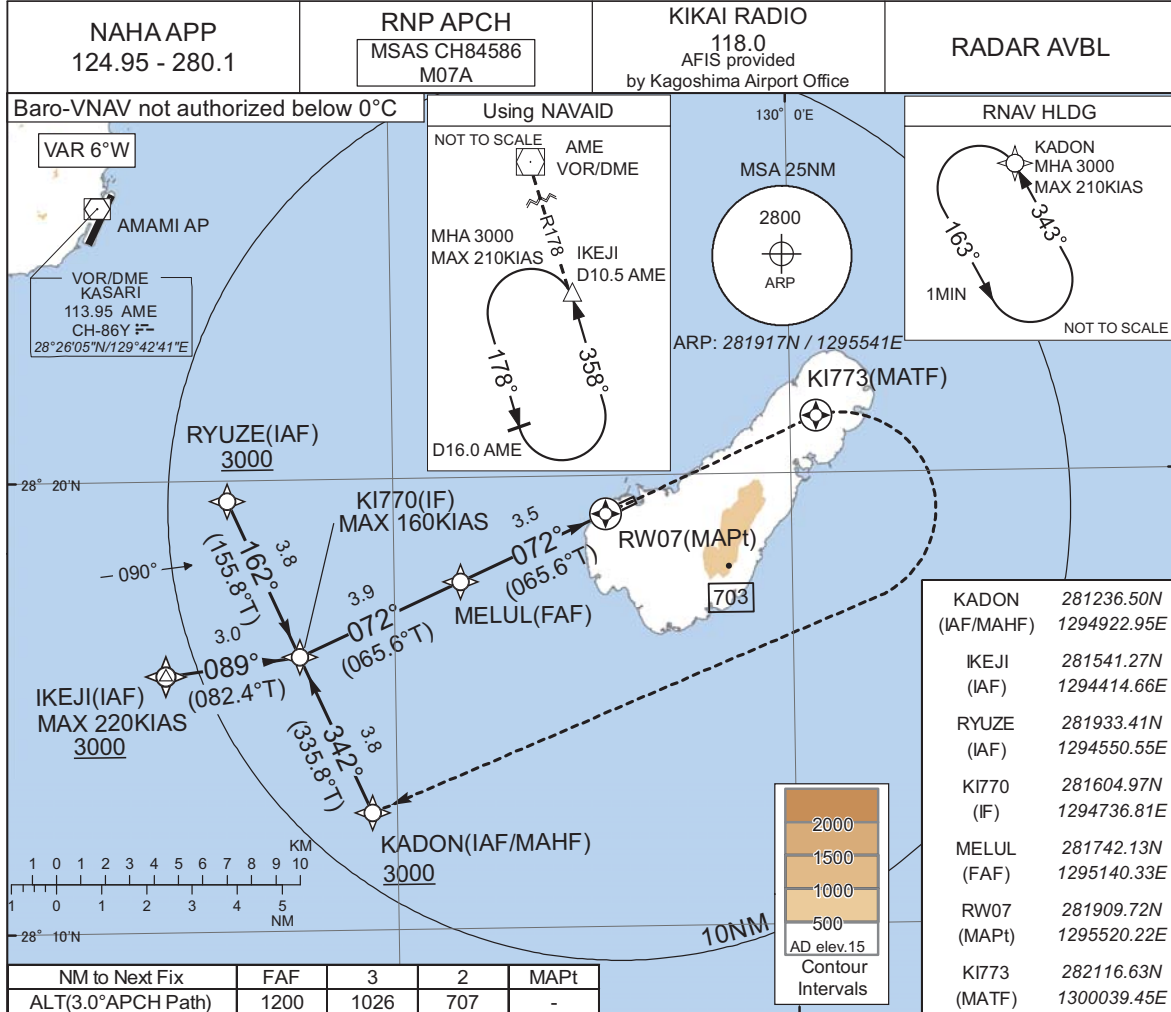
MINIMA			AD elev. 15
CAT	CIRCLING		VIS
	MDA(H)		
A	460 (445)		1600
B	500 (485)		
C	660 (645)		2400
D	-		-

MINIMA with Missed APCH climb gradient of 2.5% are not established.
Circling to NORTH side of RWY only.

INSTRUMENT APPROACH CHART

RJKI / KIKAI

RNP RWY07



Missed APCH climb gradient MNM 5.0%

MINIMA THR elev. 21 AD elev. 15

CAT	LPV		LNAV/VNAV		LNAV		CIRCLING	
	DA(H)	CMV	DA(H)	CMV	MDA(H)	CMV	MDA(H)	VIS
A	296(275)	1500	348(327)	1500	450(435)	1500	460(445)	1600
B	306(285)						500(485)	
C	315(294)	1600		1800		1800	660(645)	2400
D	-	-	-	-	-	-	-	-

MINIMA with Missed APCH climb gradient of 2.5% are not established.
Circling to NORTH side of RWY only.

CHANGE : MELUL, RW07 established. ARATI, KI772 abolished. MSAS CH added. MNM temperature for Baro-VNAV. MAX speed at KI770. ALT(3.0°APCH Path). Missed APCH climb gradient MNM. NM to THR. MINIMA.

INSTRUMENT APPROACH CHART

RJKI / KIKAI

RNP RWY07

FAS DATA BLOCK

Operation type	0	LTP/FTP ellipsoidal height	+00334
SBAS service provider identifier	2	FPAP latitude	281932.2905N
Airport identifier	RJKI	FPAP longitude	1295617.0375E
Runway	07	Threshold crossing height	00015.0
Approach performance designator	0	TCH units selector	1
Route indicator		Glide path angle	03.00
Reference path data selector	0	Course width at threshold	105.00
Reference path ID	M07A	∠ length offset	0496
LTP/FTP latitude	281909.7150N	HAL	40.0
LTP/FTP longitude	1295520.2855E	VAL	50.0
CRC remainder	2634AFC8		

Required additional data

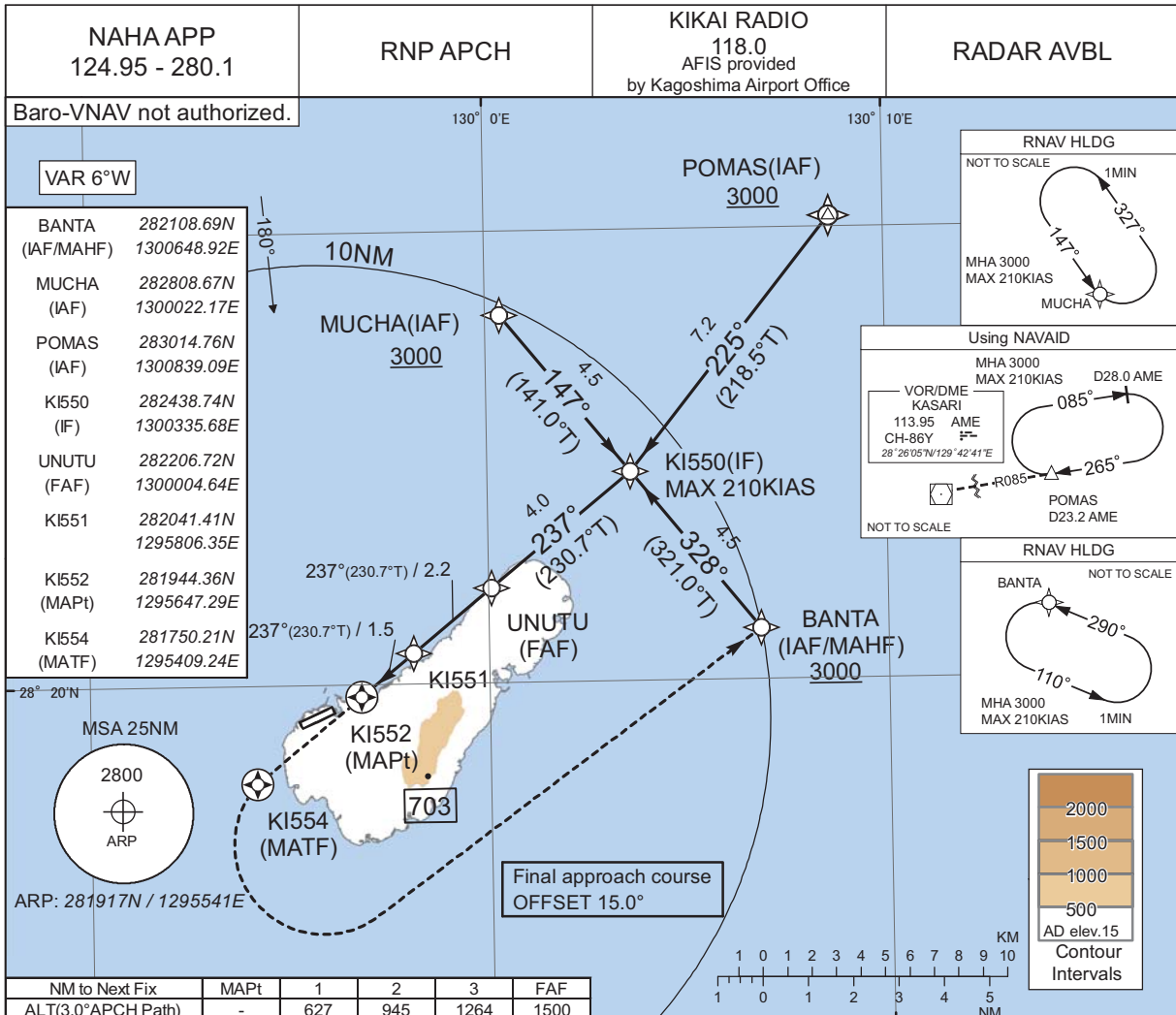
LTP/FTP orthometric height	6.2
----------------------------	-----

CHANGE : FAS DATA BLOCK, Required additional data established.

INSTRUMENT APPROACH CHART

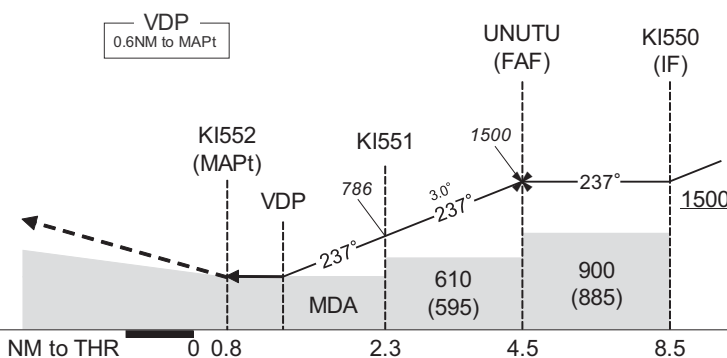
RJKI / KIKAI

RNP Z RWY25



MISSED APPROACH

Direct to KI554, turn left
direct to BANTA and hold
at 3000FT.
Contact NAHA APP.



MINIMA		THR elev. 18	AD elev. 15			
CAT	LNAV/VNAV		LNAV		CIRCLING	
	DA(H)	CMV	MDA(H)	CMV	MDA(H)	VIS
A	-		470(455)	1500	470(455)	1600
B	Not applicable				500(485)	
C	-		-	2000	660(645)	2400
D	-		-	-	-	-

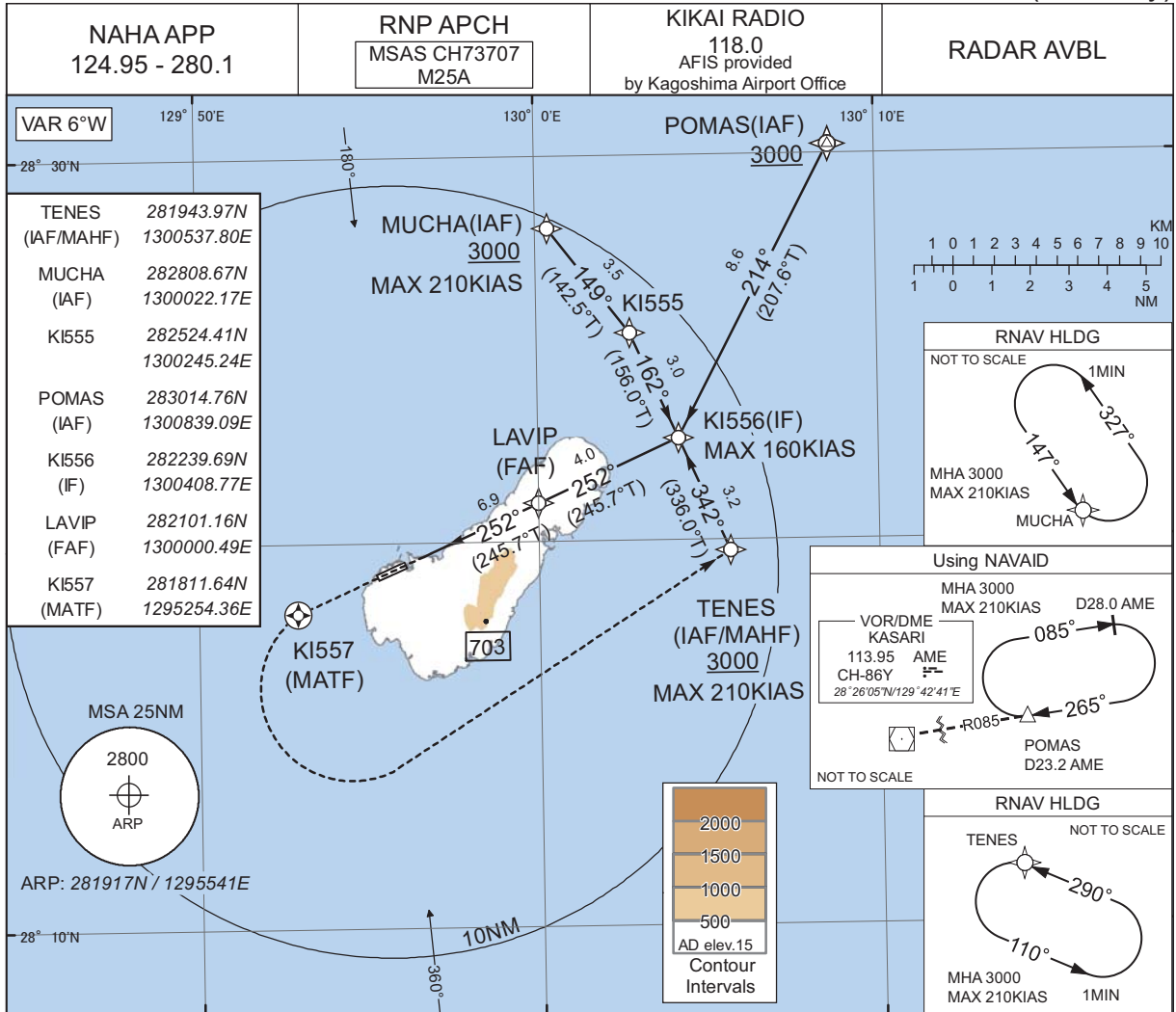
Circling to NORTH side of RWY only.

CHANGE : PROC renamed. Course FM BANTA to KI550. HLDG pattern for using NAVAID at BANTA abolished. ALT restriction at KI550.

INSTRUMENT APPROACH CHART

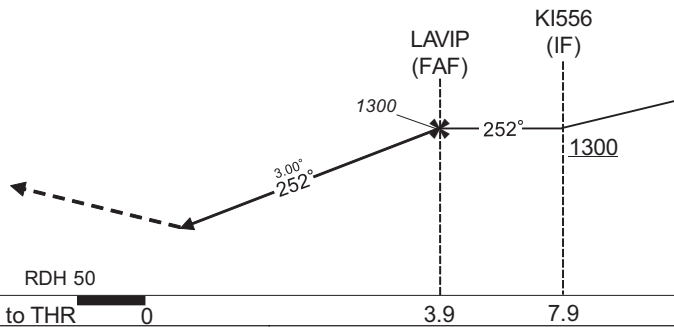
RJKI / KIKAI

RNP Y RWY25(LPV only)



MISSED APPROACH

Direct to KI557, turn left
direct to TENES and hold
at 3000FT.
Contact NAHA APP.



CHANGE : New PROC.

CAT	LPV		CIRCLING	
	DA(H)	CMV	MDA(H)	VIS
A	269(251)	1500	460(445)	1600
B	279(261)		500(485)	
C	289(271)	1600	660(645)	2400
D	-	-	-	-

Circling to NORTH side of RWY only.

INSTRUMENT APPROACH CHART

RJKI / KIKAI

RNP Y RWY25(LPV only)

FAS DATA BLOCK

Operation type	0	LTP/FTP ellipsoidal height	+00325
SBAS service provider identifier	2	FPAP latitude	281903.1220N
Airport identifier	RJKI	FPAP longitude	1295503.7170E
Runway	25	Threshold crossing height	00015.0
Approach performance designator	0	TCH units selector	1
Route indicator	Y	Glide path angle	03.00
Reference path data selector	0	Course width at threshold	105.00
Reference path ID	M25A	∠ length offset	0496
LTP/FTP latitude	281925.7000N	HAL	40.0
LTP/FTP longitude	1295600.4670E	VAL	50.0
CRC remainder	06DA9E79		

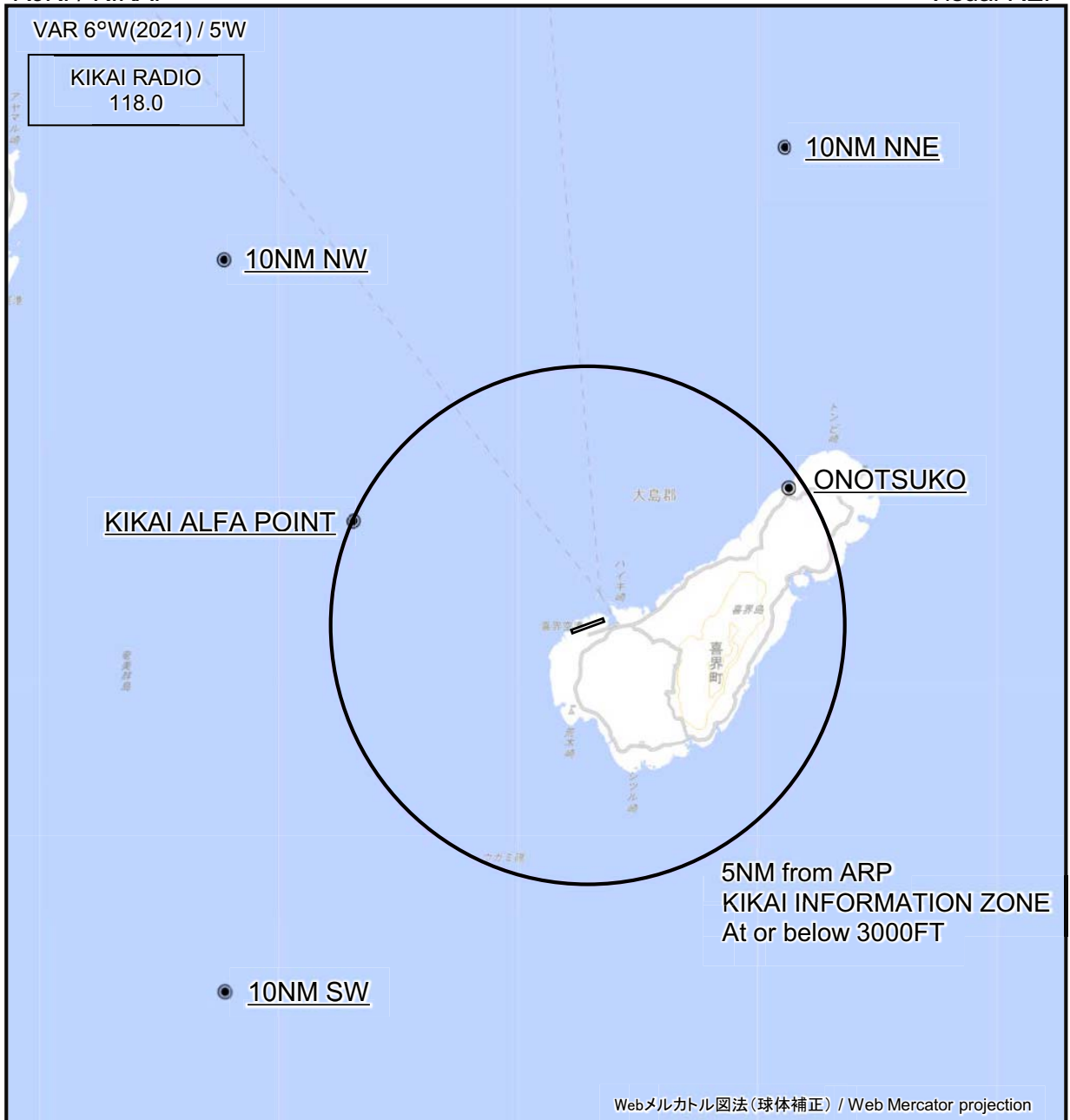
Required additional data

LTP/FTP orthometric height	5.3
----------------------------	-----

CHANGE : New PROC.

RJKI / KIKAI

Visual REP



※図中に標高を示す数字がある場合、単位はメートル(m)である。The unit of measurement used to express elevation is meter(m).

CHANGE : VAR.

Call sign	BRG / DIST from ARP	Remarks
10NM NNE	022°T / 10.0NM	海上 Over the sea
10NM NW	315°T / 10.0NM	海上 Over the sea
小野津港 Onotsuko	056°T / 4.7NM	港 Harbor
喜界ALFA POINT Kikai Alfa Point	294°T / 5.0NM	喜界空港と奄美空港を結ぶ直線上 On the straight line connecting Kikai AP and Amami AP
10NM SW	225°T / 10.0NM	海上 Over the sea

RJKI / KIKAI

Minimum Vectoring Altitude CHART

