

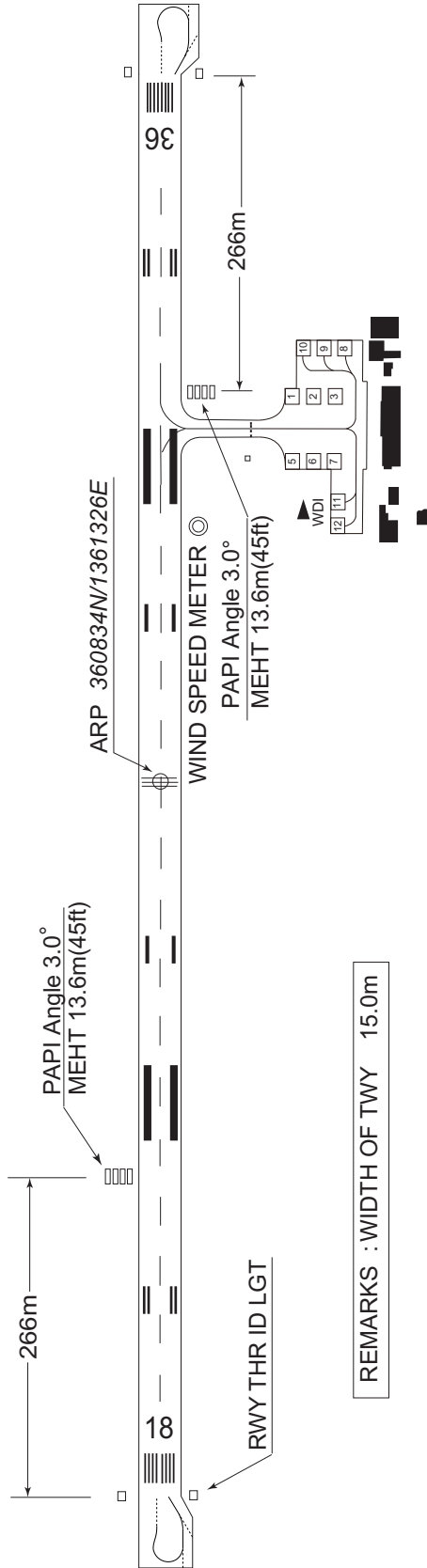
RJNF / FUKUI

AD CHART

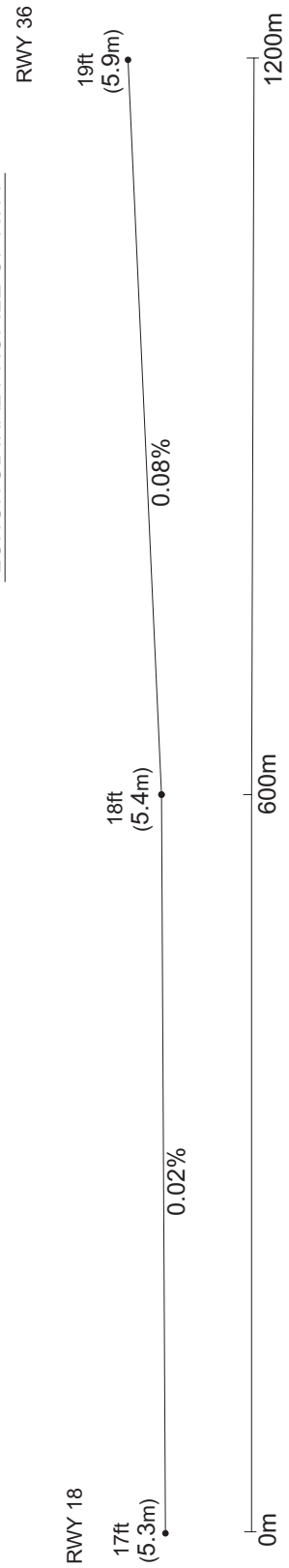
CHANGE : WIND SPEED METER added.

FUKUI AP

VAR 8°W 2022
Annual Change 4.2' W



LONGITUDINAL PROFILE OF RWY

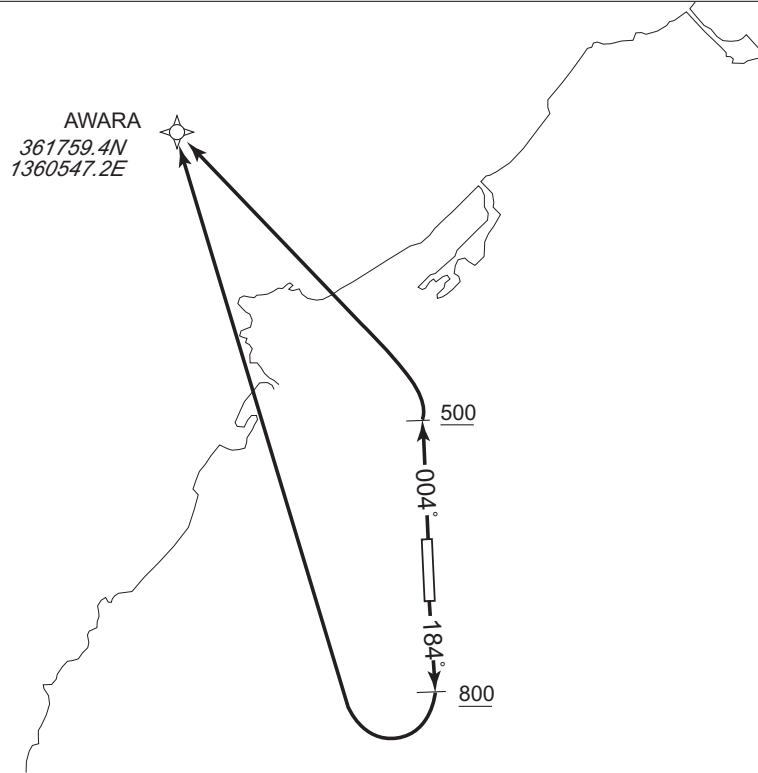


STANDARD DEPARTURE CHART -INSTRUMENT

RJNF / FUKUI RNAV SID
AWARA ONE DEPARTURE RNP1

Note GNSS required.

VAR 8° W



RWY18: Climb on HDG184° at or above 800FT, turn right direct to AWARA.
 RWY36: Climb on HDG004° at or above 500FT, turn left direct to AWARA.
 Note RWY18: 5.0% climb gradient required up to 1100FT.

RWY18

Serial Number	Path Descriptor	Waypoint Identifier	Fly Over	Course °M(°T)	Magnetic Variation	Distance (NM)	Turn Direction	Altitude (FT)	Speed (KIAS)	Vertical Angle	Navigation Specification
001	VA	—	—	184 (175.9)	-8.5	—	—	+800	—	—	RNP1
002	DF	AWARA	—	—	-8.5	—	R	—	—	—	RNP1

RWY36

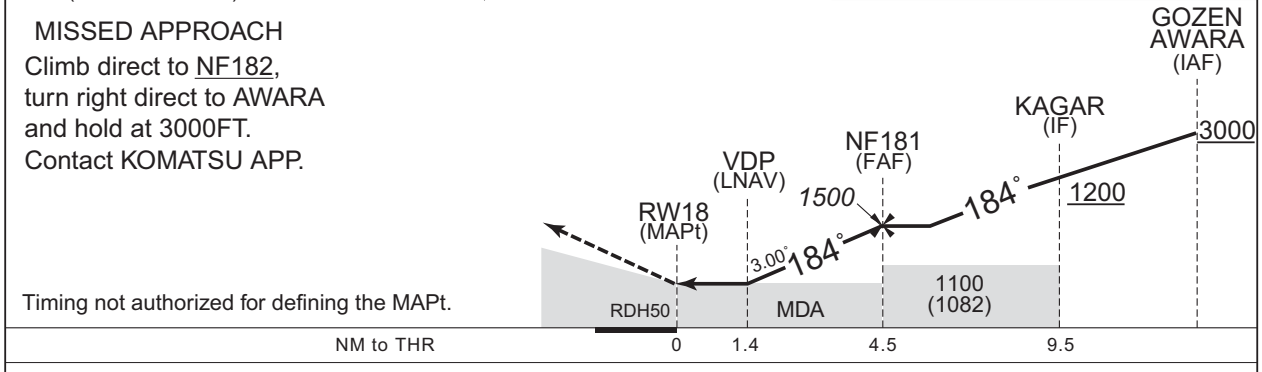
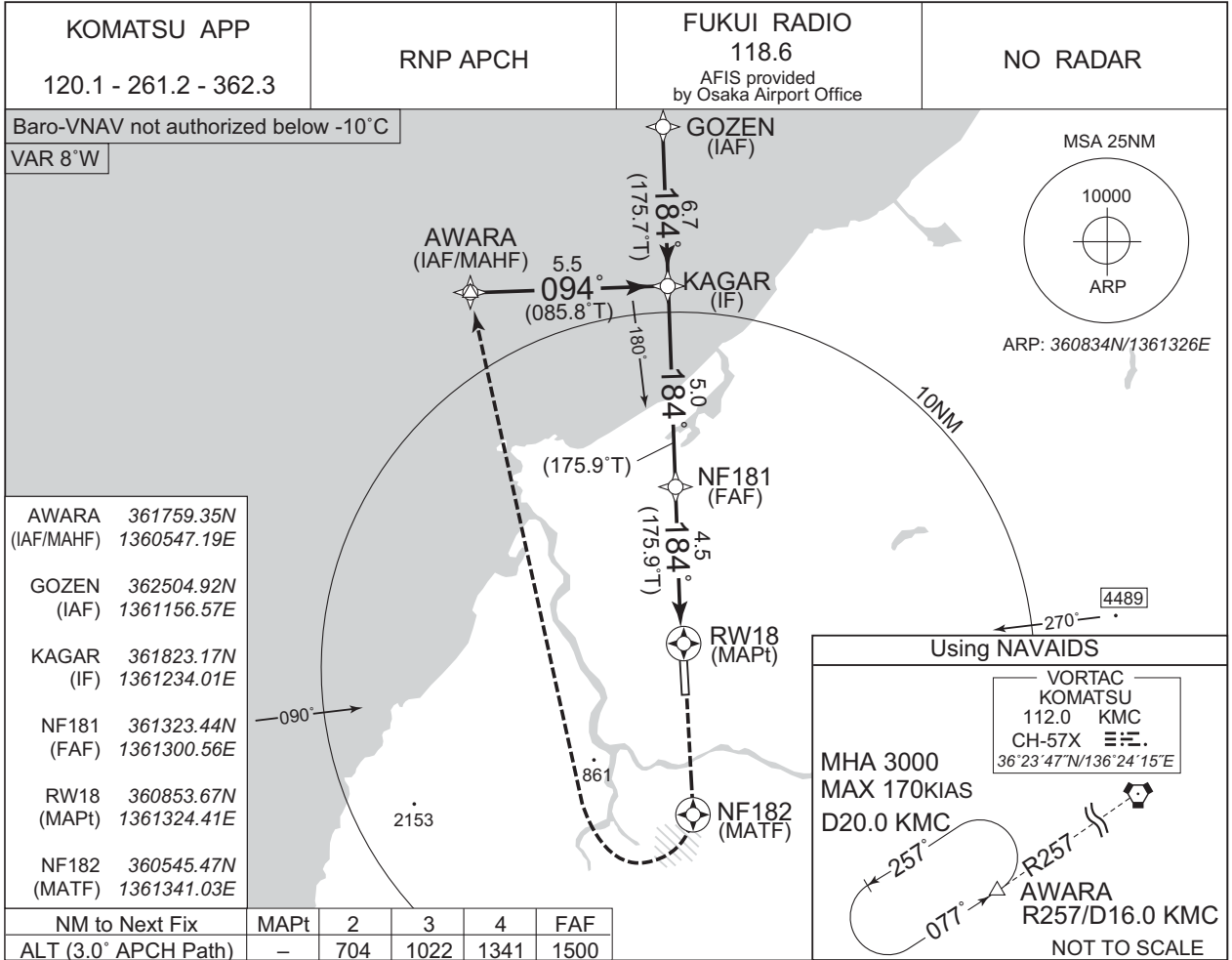
Serial Number	Path Descriptor	Waypoint Identifier	Fly Over	Course °M(°T)	Magnetic Variation	Distance (NM)	Turn Direction	Altitude (FT)	Speed (KIAS)	Vertical Angle	Navigation Specification
001	VA	—	—	004 (355.9)	-8.5	—	—	+500	—	—	RNP1
002	DF	AWARA	—	—	-8.5	—	L	—	—	—	RNP1

CHANGE : Navigation Specification(Basic RNP1 → RNP1).

INSTRUMENT APPROACH CHART

RJNF / FUKUI

RNP RWY18



Missed APCH climb gradient MNM 5.0%

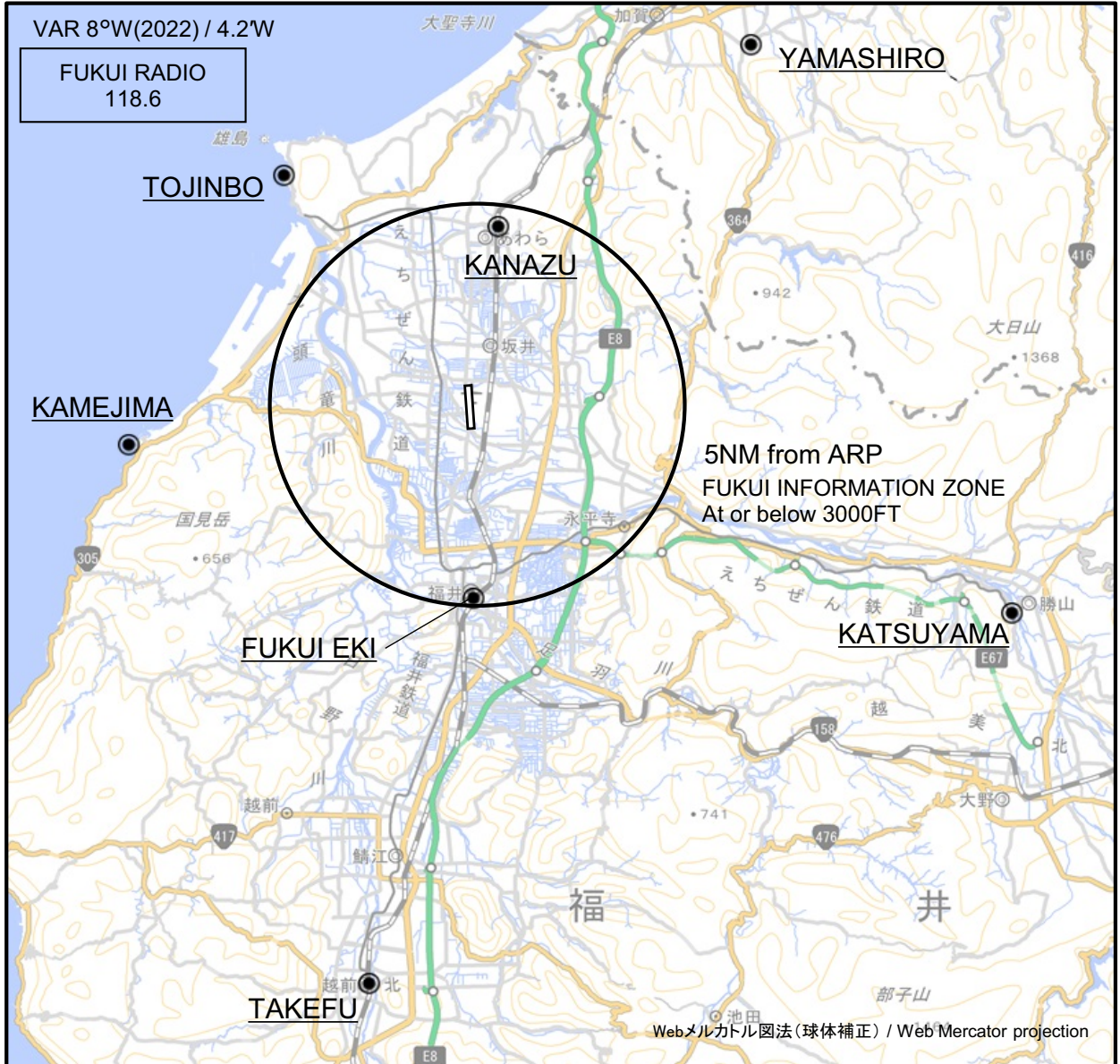
CHANGE : MINIMA for circling.

MINIMA		THR elev. 17	AD elev. 18			
CAT	LNAV/VNAV		LNAV		CIRCLING	
	DA(H)	CMV	MDA(H)	CMV	MDA(H)	VIS
A	480 (463)	1500	480 (462)	1500	570 (552)	1600
B						
C	-	-	-	-	-	-
D	-	-	-	-	-	-

MINIMA with Missed APCH climb gradient of 2.5% are not established.

RJNF / FUKUI

Visual REP



※図中に標高を示す数字がある場合、単位はメートル(m)である。The unit of measurement used to express elevation is meter(m).

CHANGE : VAR.

Call sign	BRG / DIST from ARP	Remarks
山代 Yamashiro	037°T / 11.1NM	山代温泉街 Town of the Yamashiro hot-spring
金津 Kanazu	007°T / 4.4NM	JR芦原温泉駅 Station
勝山 Katsuyama	112°T / 14.0NM	えちぜん鉄道駅 Station
武生 Takefu	190°T / 14.6NM	JR駅 Station
亀島 Kamejima	263°T / 8.5NM	岩礁 Reef
東尋坊 Tojinbo	320°T / 7.3NM	タワー Tower
福井駅 Fukui eki	180°T / 4.8NM	JR駅 Station