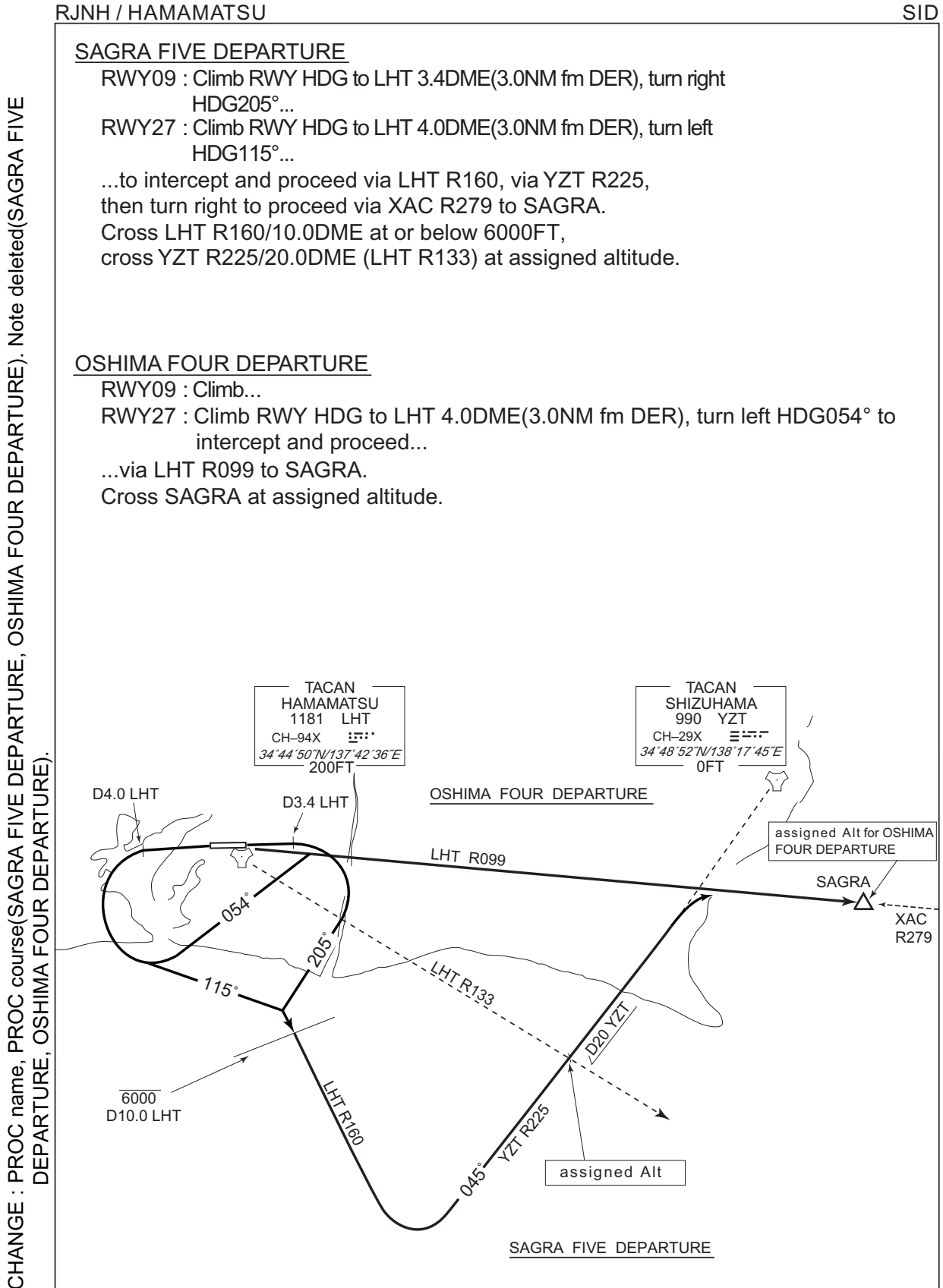


STANDARD DEPARTURE CHART - INSTRUMENT



STANDARD DEPARTURE CHART - INSTRUMENT

RJNH / HAMAMATSU

SID

KOWA SIX DEPARTURE

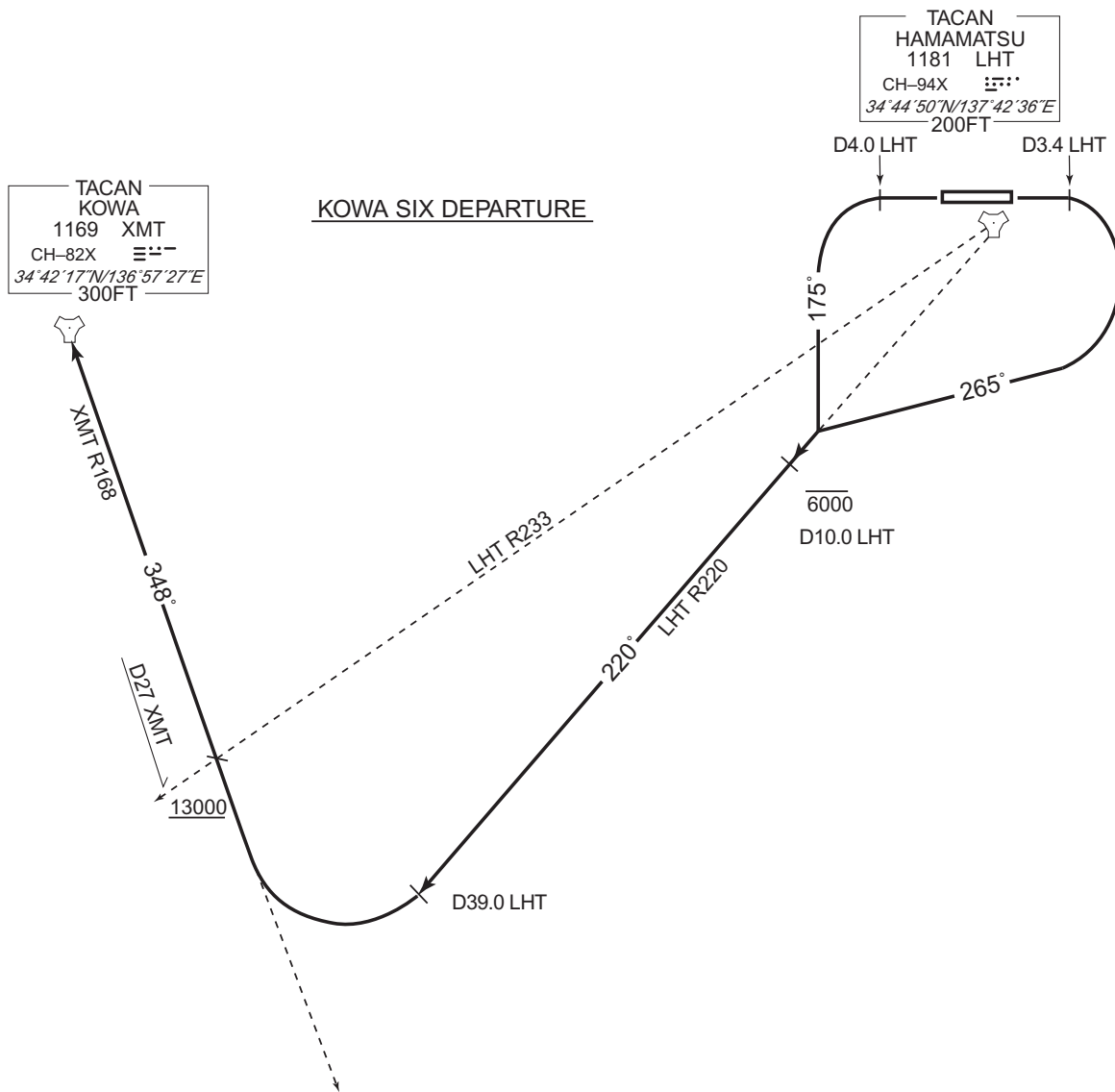
RWY09 : Climb RWY HDG to LHT 3.4DME(3.0NM fm DER), turn right HDG265° to intercept and proceed...

RWY27 : Climb RWY HDG to LHT 4.0DME(3.0NM fm DER), turn left HDG175° to intercept and proceed...

...via LHT R220 to LHT 39.0DME, then turn right to intercept and proceed via XMT R168 to XMT TACAN.

Cross LHT R220/10.0DME at or below 6000FT,
cross XMT R168/27.0DME(LHT R233) at or above 13000FT.

CHANGE : PROC renamed. PROC course. Note deleted.



STANDARD DEPARTURE CHART - INSTRUMENT

RJNH / HAMAMATSU

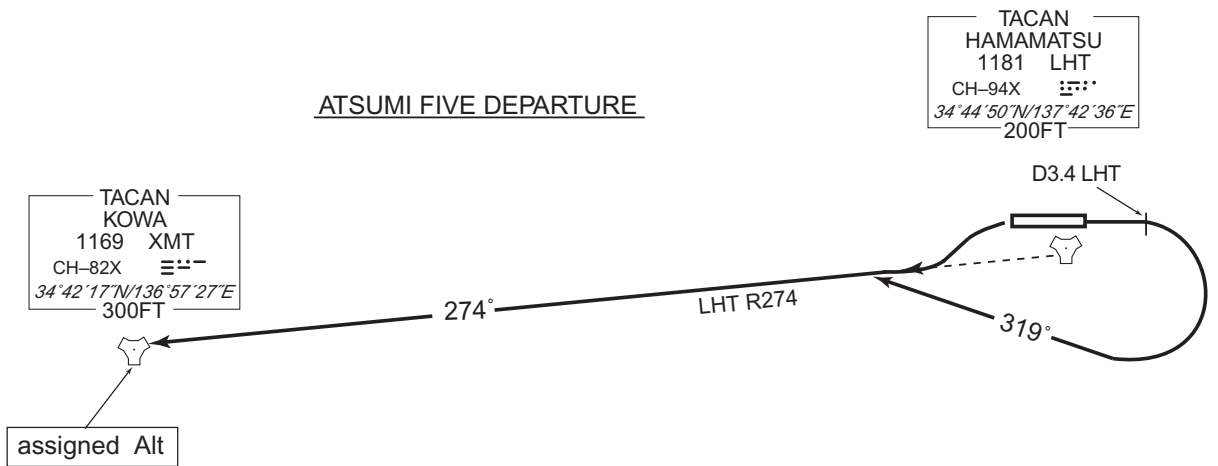
SID

ATSUMI FIVE DEPARTURE

RWY09 : Climb RWY HDG to LHT 3.4DME(3.0NM frm DER), turn right HDG319°
to intercept and proceed...

RWY27 : Climb ...
...via LHT R274 to XMT TACAN.
Cross XMT TACAN at assigned altitude.

CHANGE : PROC renamed. PROC course. Note deleted.



STANDARD DEPARTURE CHART - INSTRUMENT

RJNH / HAMAMATSU

SID

HAMAMATSU REVERSAL THREE DEPARTURE

RWY09 : Climb RWY HDG to LHT 3.4DME(3.0NM fm DER), turn right HDG265° to intercept and proceed...

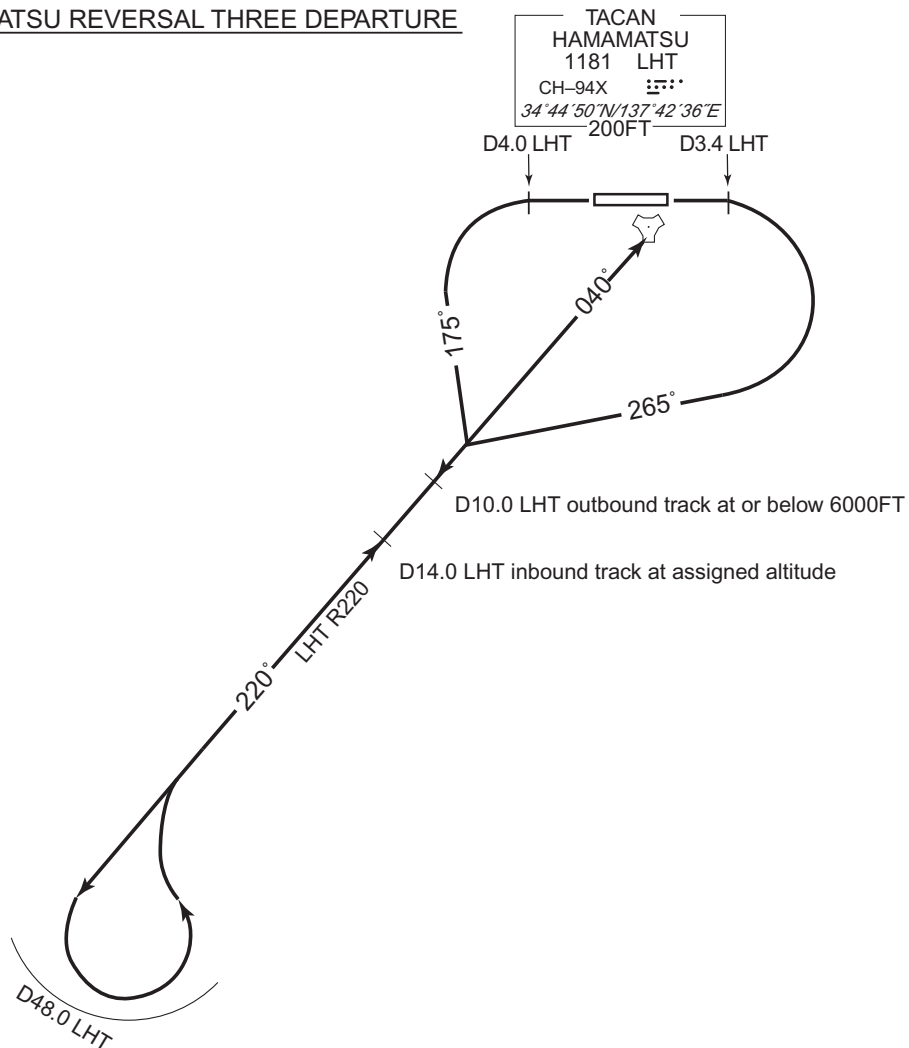
RWY27 : Climb RWY HDG to LHT 4.0DME(3.0NM fm DER), turn left HDG175° to intercept and proceed...

...via LHT R220, then turn left within LHT 48.0DME, reverse course to LHT TACAN.

Cross LHT R220/10.0DME outbound track at or below 6000FT.

Cross LHT R220/14.0DME inbound track at assigned altitude.

HAMAMATSU REVERSAL THREE DEPARTURE



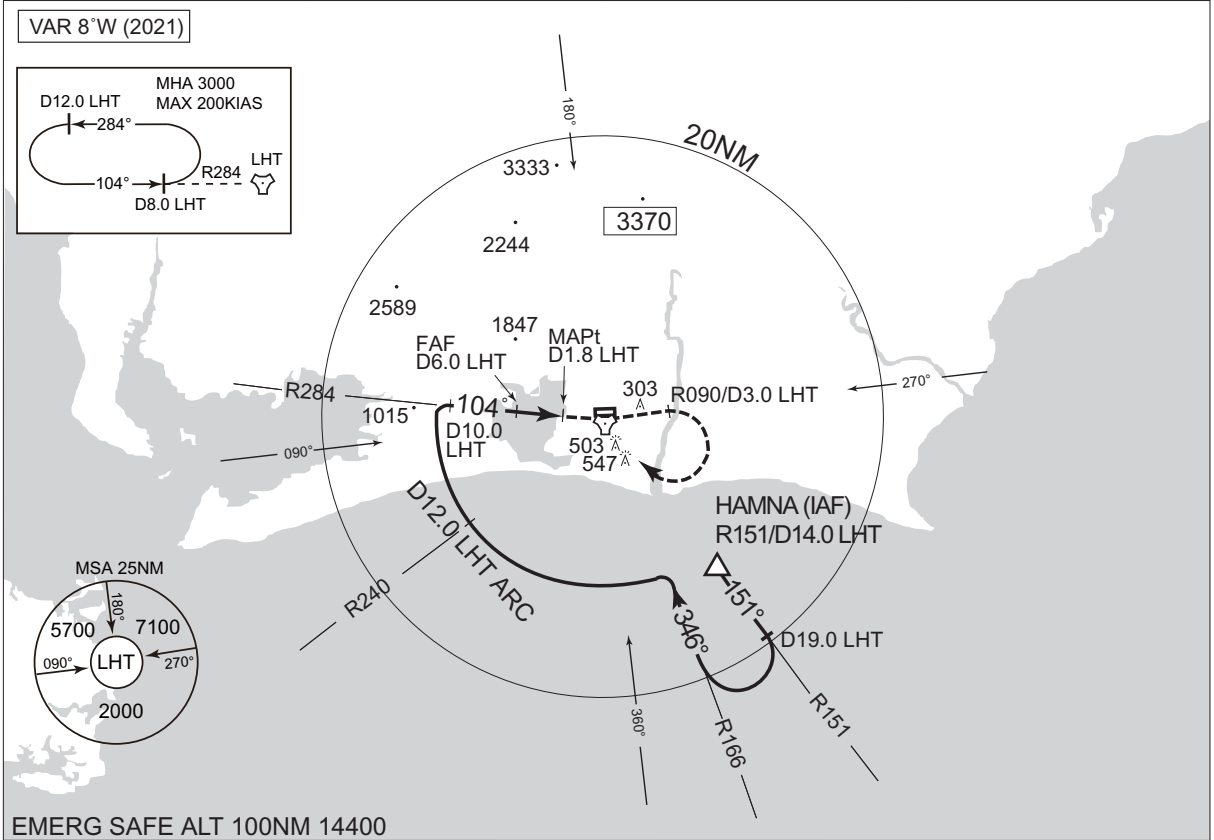
CHANGE : PROC renamed. PROC course. Note deleted.

INSTRUMENT APPROACH CHART

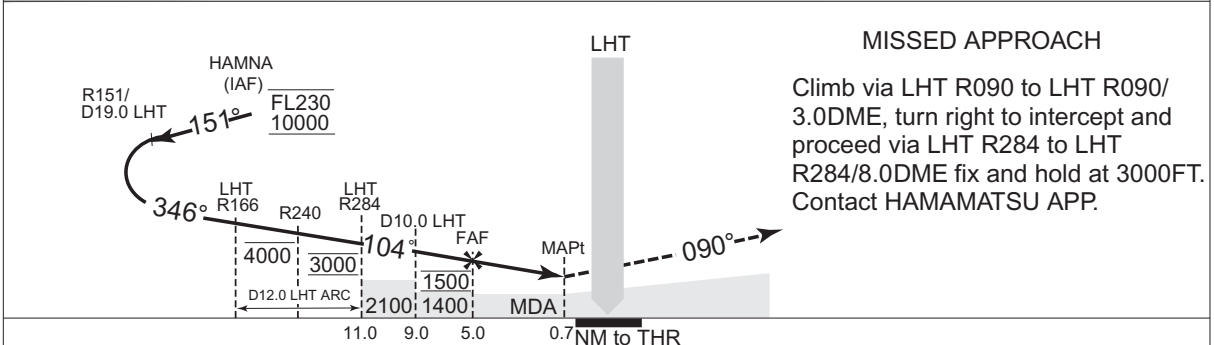
RJNH / HAMAMATSU

TACAN Z RWY09

HAMAMATSU APP 120.1 - 261.2 - 250.4	HAMAMATSU TACAN CH-94X LHT $\dot{\cdot}\dot{\cdot}\dot{\cdot}$ 34°44'50"N/137°42'36"E	HAMAMATSU TOWER 236.8 - 126.2 - 304.5	RADAR AVBL
--	---	--	------------



CHANGE : MDA(H) for circling. OBST(HGT 503, 547).



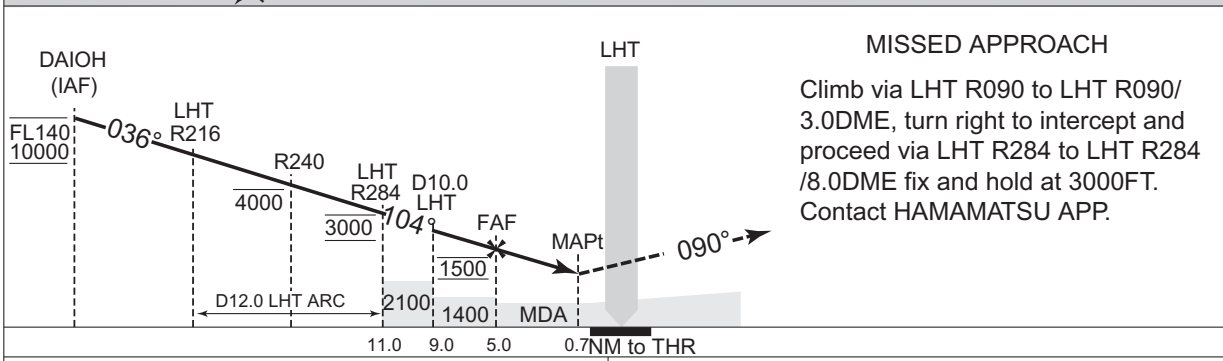
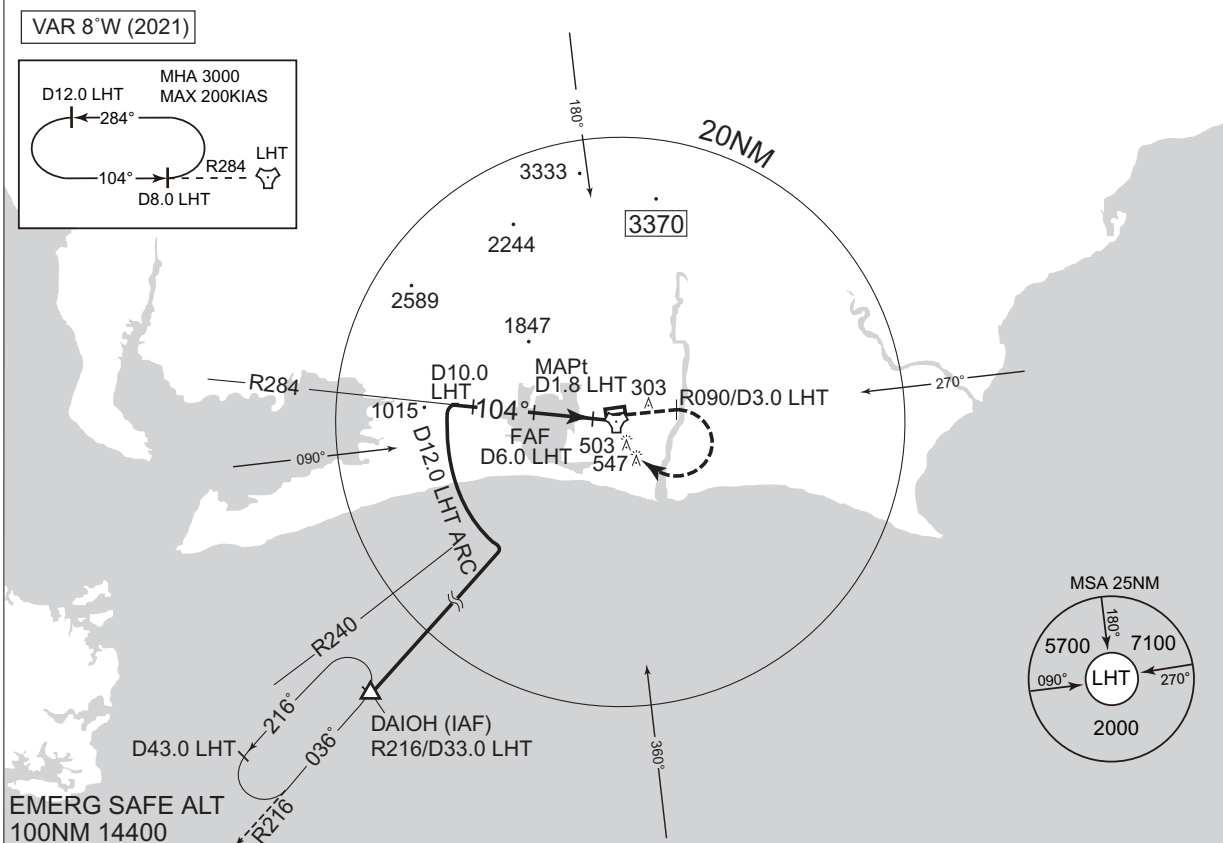
MINIMA	THR elev. 141	AD elev. 150		
CAT			CIRCLING	
	MDA(H)	RVR/CMV	MDA(H)	VIS
A	640 (499)	1500	800 (650)	1600
B				
C				
D		2000	850 (700)	2400
				3200

INSTRUMENT APPROACH CHART

RJNH / HAMAMATSU

TACAN Y RWY09

HAMAMATSU APP 120.1 - 261.2 - 250.4	HAMAMATSU TACAN CH-94X LHT 34°44'50"N/137°42'36"E	HAMAMATSU TOWER 236.8 - 126.2 - 304.5	RADAR AVBL
--	---	--	------------



CHANGE : MDA(H) for circling. OBST(HGT 503, 547).

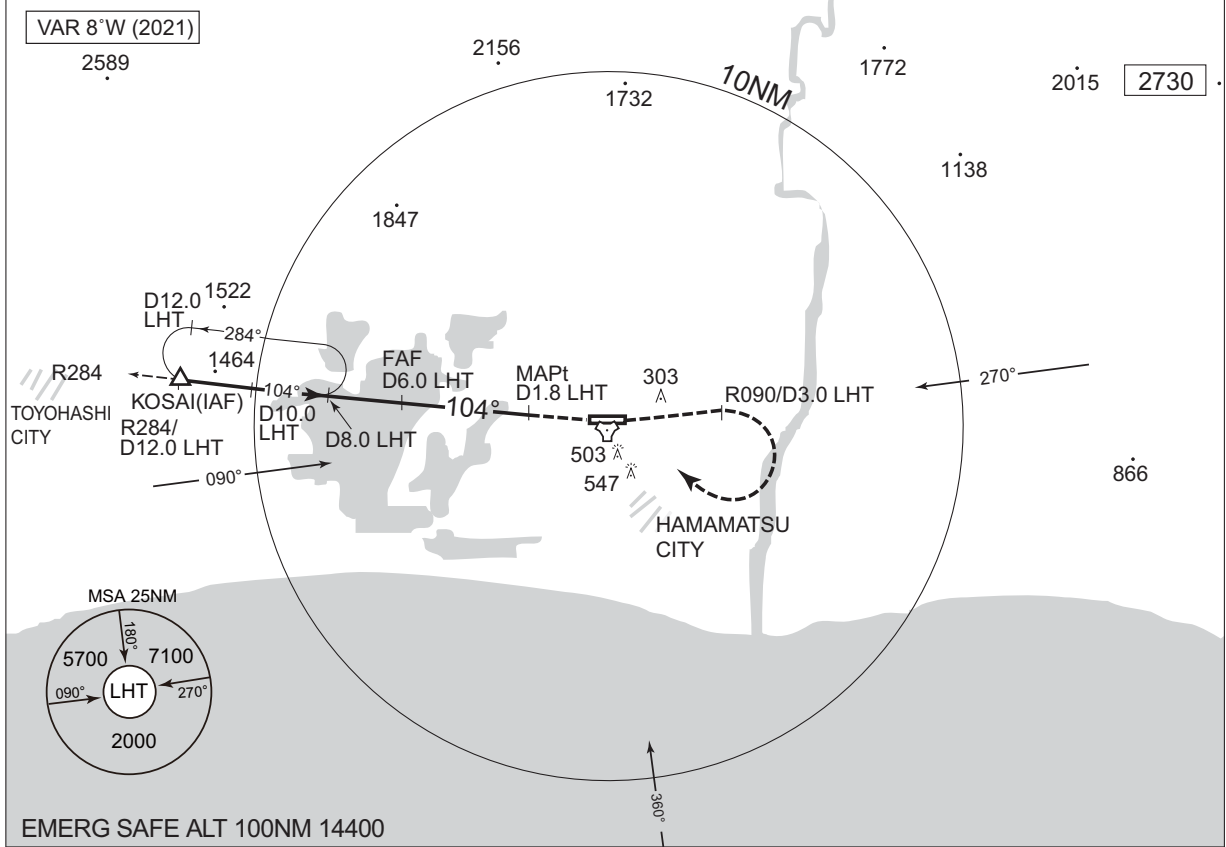
MINIMA	THR elev. 141	AD elev. 150		
CAT	CIRCLING			
	MDA(H)	RVR/CMV	MDA(H)	VIS
A	640 (499)	1500	800 (650)	1600
B				
C				
D	2000	850 (700)	3200	

INSTRUMENT APPROACH CHART

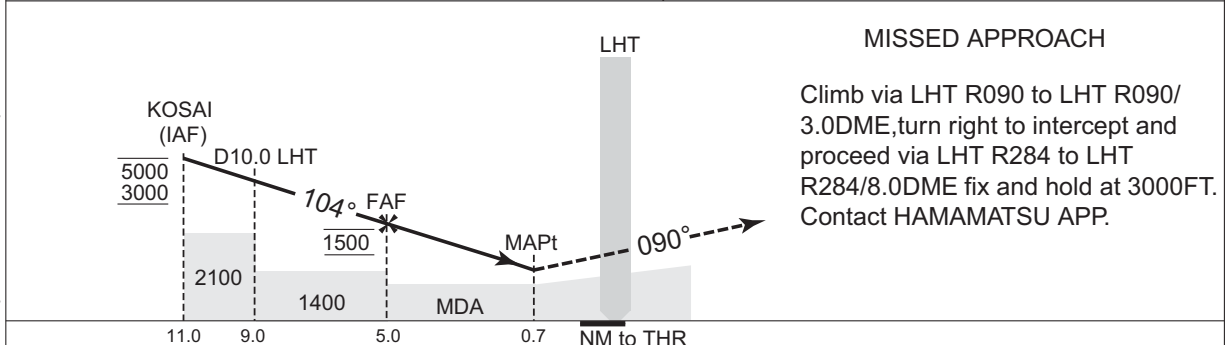
RJNH / HAMAMATSU

TACAN X RWY09

HAMAMATSU APP 120.1 - 261.2 - 250.4	HAMAMATSU TACAN CH-94X LHT $\therefore \therefore \therefore$ 34°44'50"N/137°42'36"E	HAMAMATSU TOWER 236.8 - 126.2 - 304.5	RADAR AVBL
--	--	--	------------



CHANGE : MDA(H) for circling. OBST(HGT 503, 547).



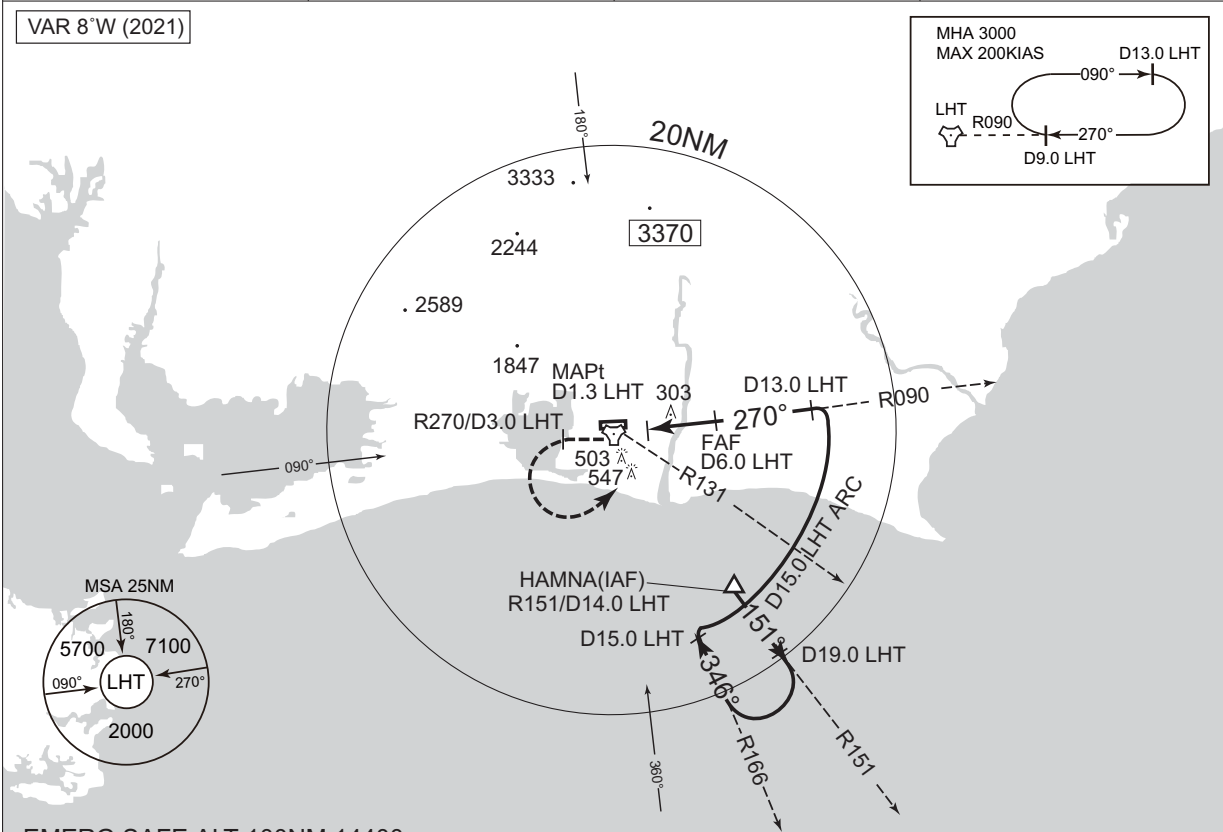
MINIMA		THR elev. 141	AD elev. 150	
CAT			CIRCLING	
	MDA(H)	RVR/CMV	MDA(H)	VIS
A	640 (499)	1500	800 (650)	1600
B				2400
C		2000	850 (700)	3200
D				

INSTRUMENT APPROACH CHART

RJNH / HAMAMATSU

TACAN Z RWY27

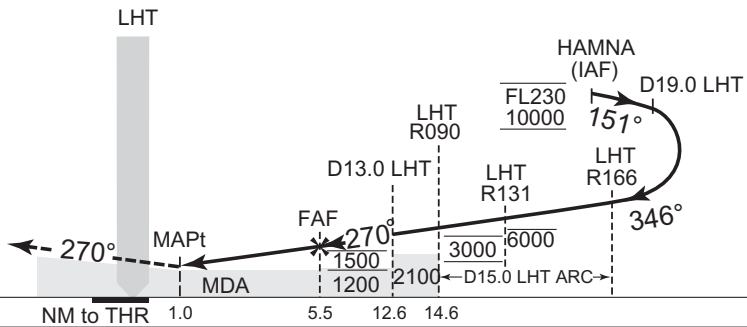
HAMAMATSU APP 120.1 - 261.2 - 250.4	HAMAMATSU TACAN CH-94X LHT 34°44'50"N/137°42'36"E	HAMAMATSU TOWER 126.2 - 236.8 - 304.5	RADAR AVBL
--	---	--	------------



EMERG SAFE ALT 100NM 14400

MISSED APPROACH

Climb via LHT R270 to LHT R270/
3.0DME, turn left to intercept and
proceed via LHT R090 to LHT
R090/9.0DME fix and hold at 3000FT.
Contact HAMAMATSU APP.



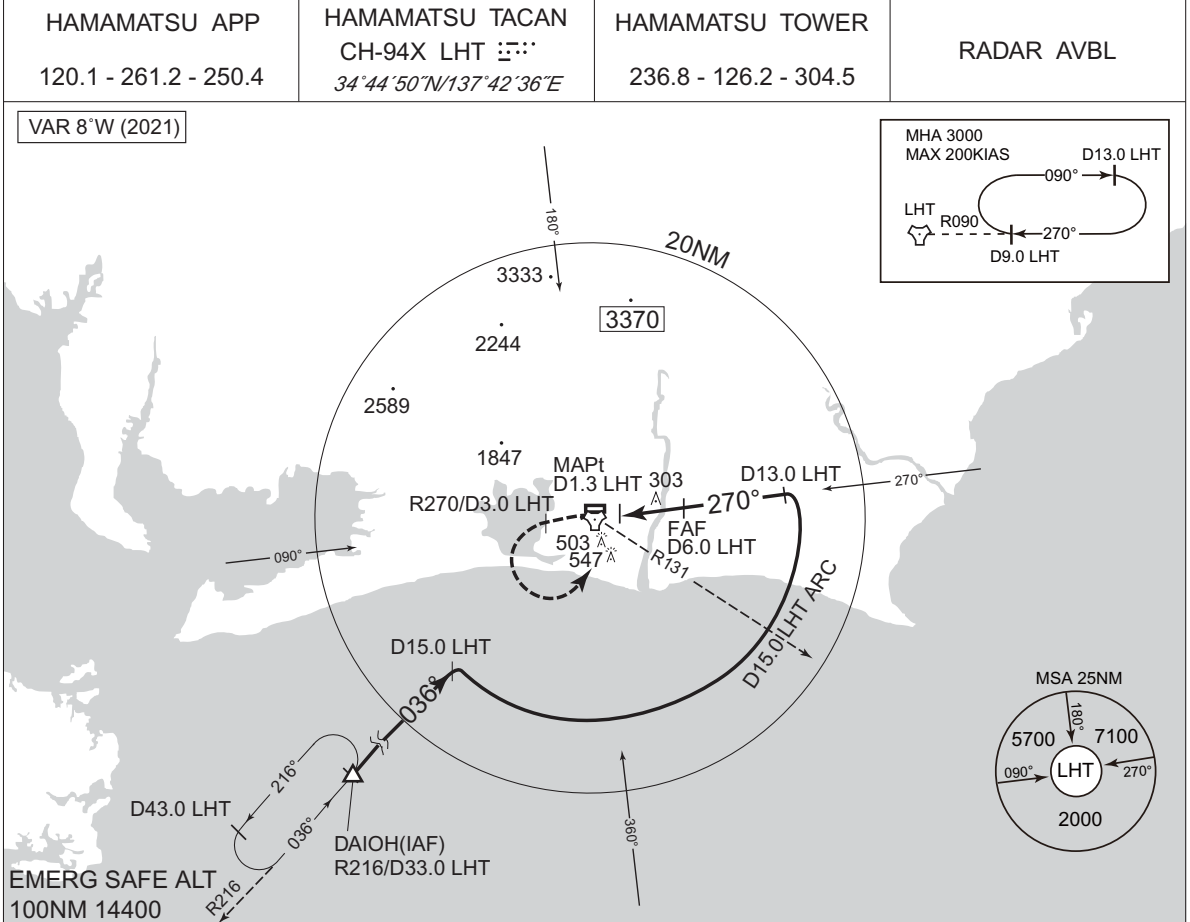
CHANGE : MDA(H) for circling. OBST(HGT) 503, 547).

MINIMA	THR elev. 148	AD elev. 150		
CAT	CIRCLING			
	MDA(H)	RVR/ CMV	MDA(H)	VIS
A	560 (410)	1500	800 (650)	1600
B				
C				
D	2000	850 (700)	3200	

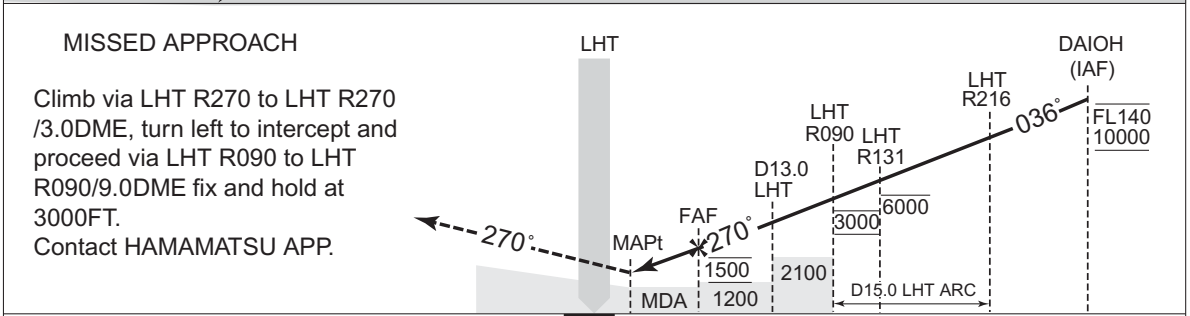
INSTRUMENT APPROACH CHART

RJNH / HAMAMATSU

TACAN Y RWY27



CHANGE : MDA(H) for circling. OBST(HGT 503, 547).

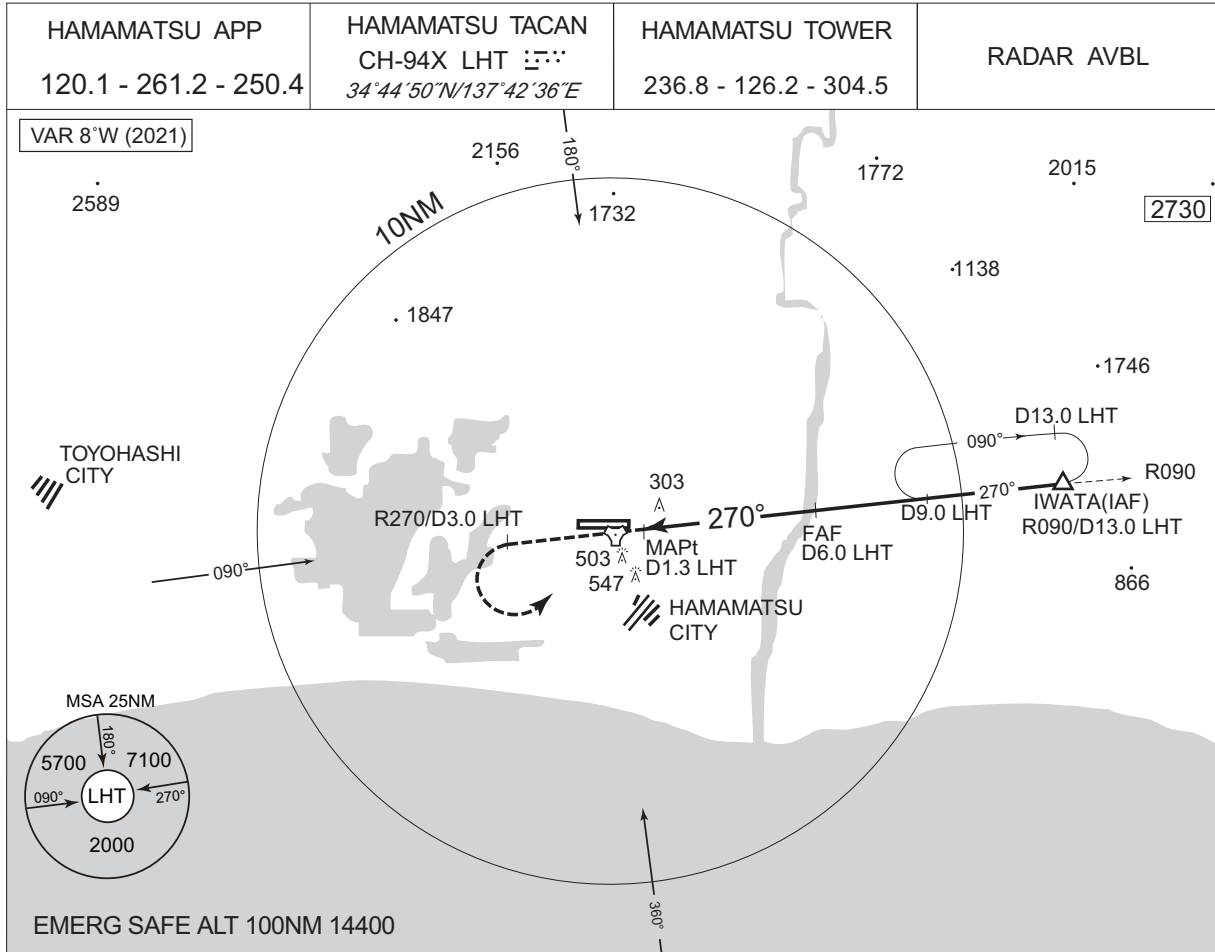


	MINIMA	THR elev. 148	AD elev. 150	
CAT	CIRCLING			
	MDA(H)	RVR/ CMV	MDA(H)	VIS
A	560 (410)	1500	800 (650)	1600
B			2400	
C	2000	850 (700)	850 (700)	2400
D			3200	

INSTRUMENT APPROACH CHART

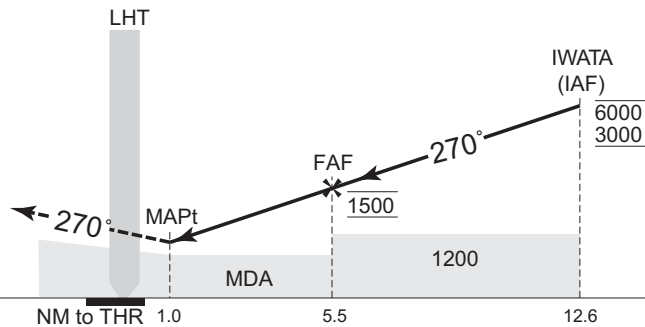
RJNH / HAMAMATSU

TACAN X RWY27



MISSED APPROACH

Climb via LHT R270 to LHT R270/
3.0DME, turn left to intercept and
proceed via LHT R090 to LHT
R090/9.0DME fix and hold at 3000FT.
Contact HAMAMATSU APP.



CHANGE : MDA(H) for circling. OBST(HGT 503, 547).

MINIMA		THR elev. 148	AD elev. 150	
CAT			CIRCLING	
	MDA(H)	RVR/ CMV	MDA(H)	VIS
A	560 (410)	1500	800 (650)	1600
B				2400
C		2000	850 (700)	3200
D				