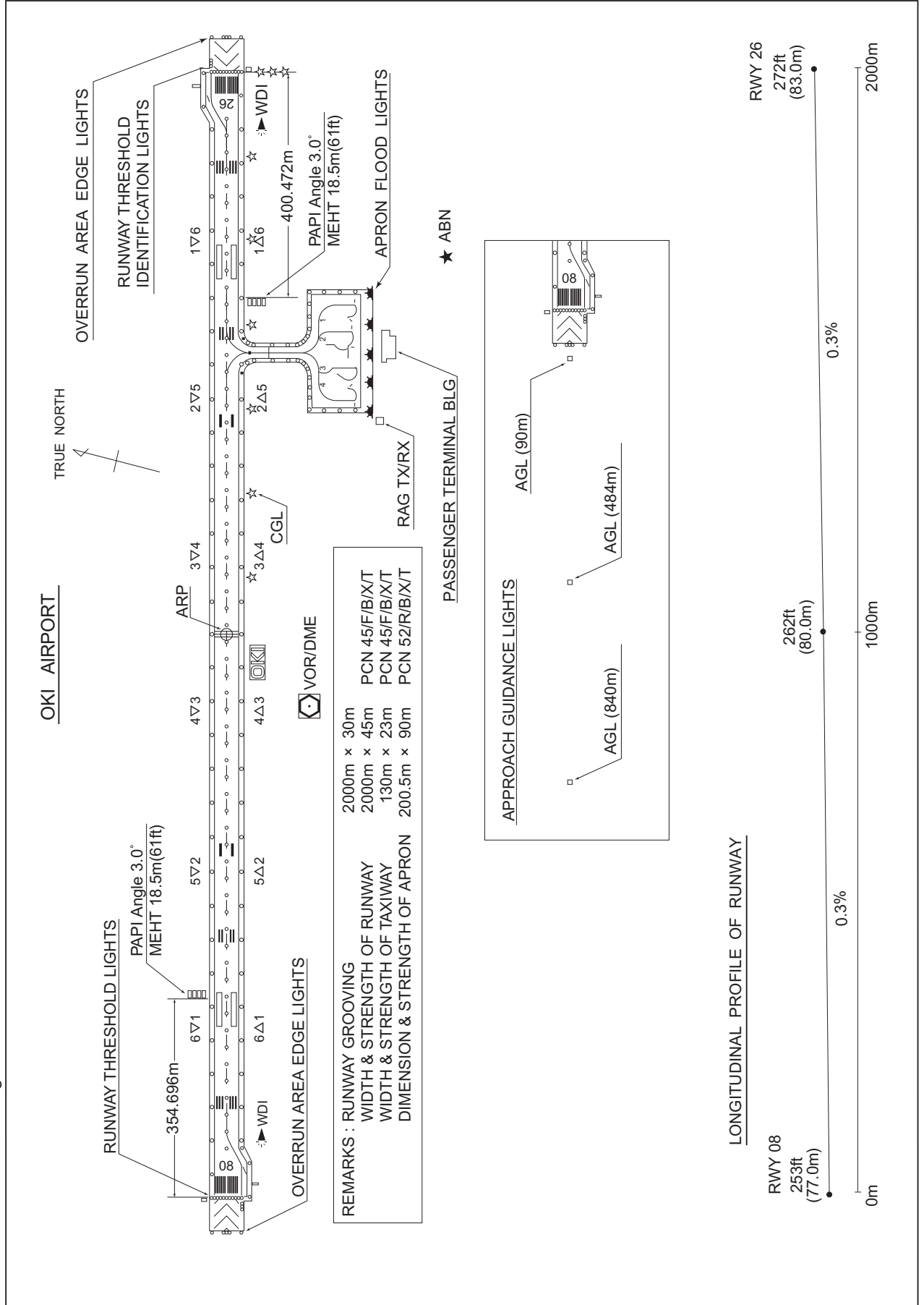


RJNO / OKI

AD CHART

CHANGE : APRON Marking



INTENTIONALLY LEFT BLANK

STANDARD DEPARTURE CHART -INSTRUMENT

RJNO / OKI

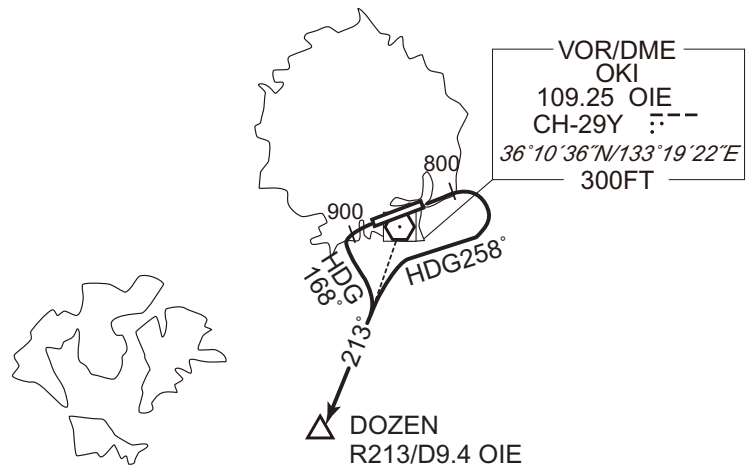
SID

DOZEN FOUR DEPARTURE

RWY08 : Climb RWY HDG to 800FT, turn right HDG258°...

RWY26 : Climb RWY HDG to 900FT, turn left HDG168°...

...to intercept and proceed via OIE R213 to DOZEN.



CHANGE : Description of PROC name.

INTENTIONALLY LEFT BLANK

STANDARD DEPARTURE CHART -INSTRUMENT

RJNO / OKI

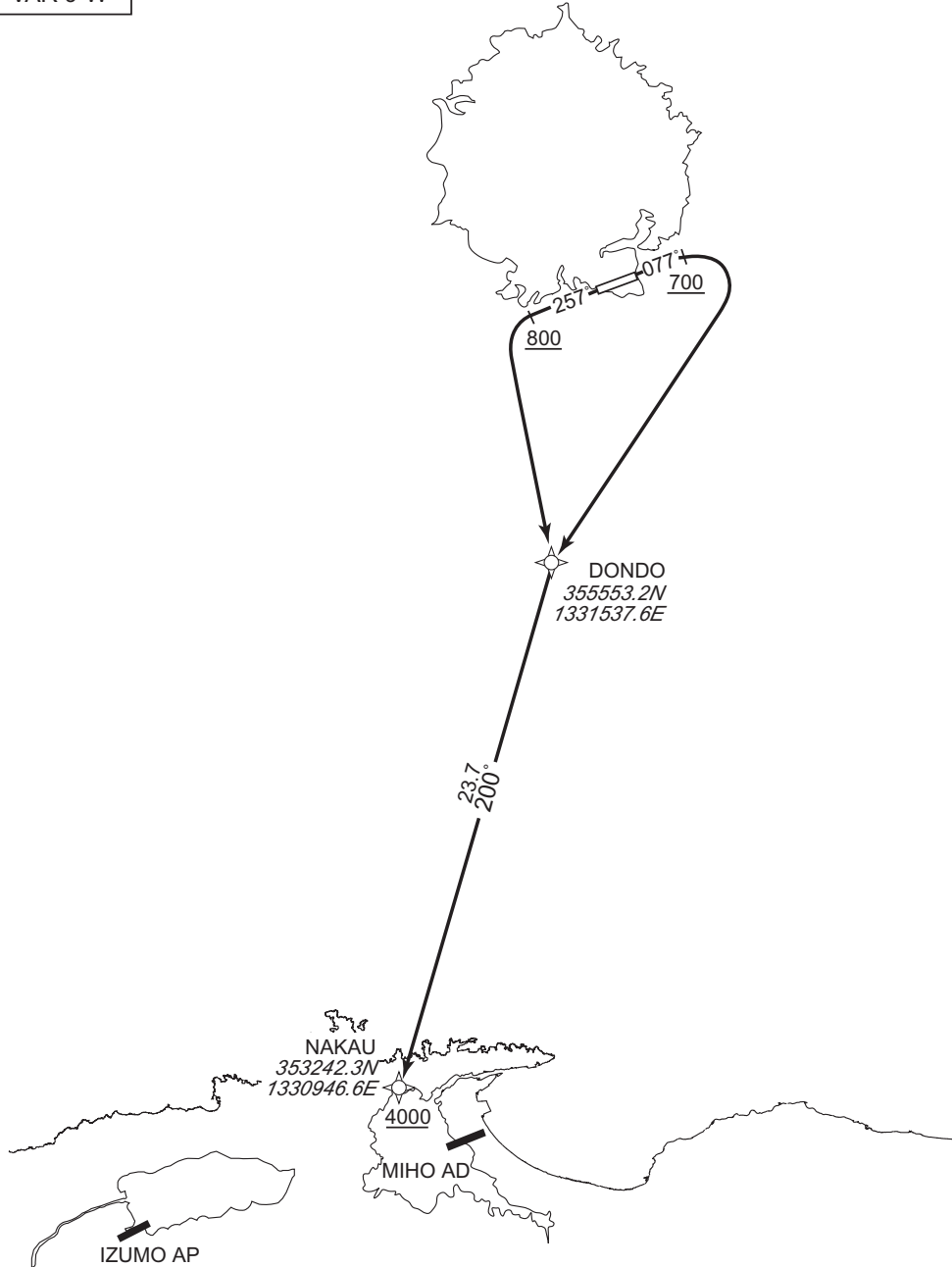
RNAV SID

NAKAU TWO DEPARTURE

RNP1

Note GNSS required.

VAR 9°W



CHANGE : PROC renamed. PROC course. VAR.

RWY08 : Climb on HDG 077° at or above 700FT, turn right direct to DONDO, to NAKAU at or above 4000FT.

RWY26 : Climb on HDG 257° at or above 800FT, turn left direct to DONDO, to NAKAU at or above 4000FT.

STANDARD DEPARTURE CHART -INSTRUMENT

RJNO / OKI

RNAV SID

NAKAU TWO DEPARTURE

RWY08

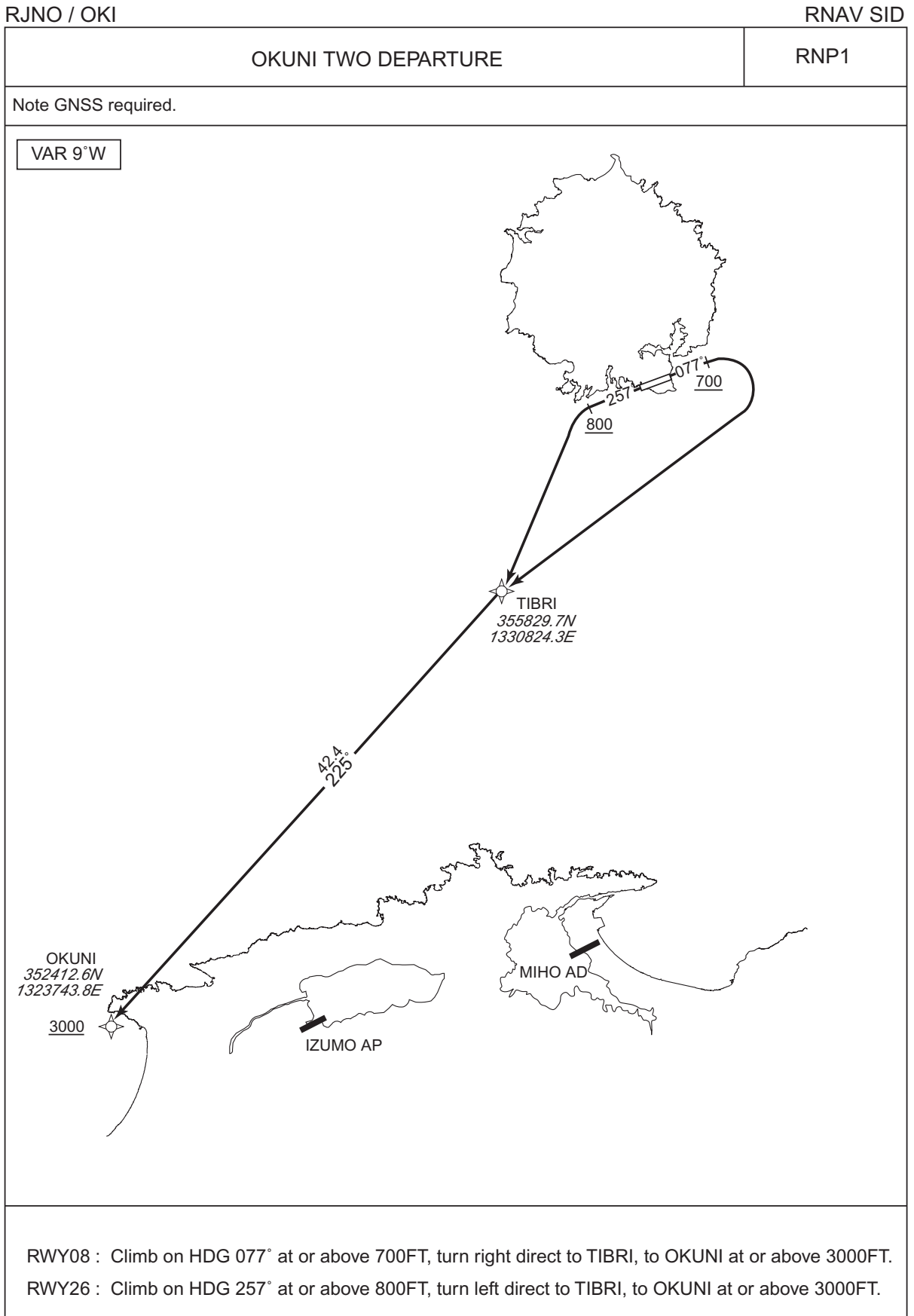
Serial Number	Path Descriptor	Waypoint Identifier	Fly Over	Course °M(°T)	Magnetic Variation	Distance (NM)	Turn Direction	Altitude (FT)	Speed (KIAS)	Vertical Angle	Navigation Specification
001	VA	-	-	077 (067.8)	-8.8	-	-	+700	-	-	RNP1
002	DF	DONDO	-	-	-8.8	-	R	-	-	-	RNP1
003	TF	NAKAU	-	200 (191.6)	-8.8	23.7	-	+4000	-	-	RNP1

RWY26

Serial Number	Path Descriptor	Waypoint Identifier	Fly Over	Course °M(°T)	Magnetic Variation	Distance (NM)	Turn Direction	Altitude (FT)	Speed (KIAS)	Vertical Angle	Navigation Specification
001	VA	-	-	257 (247.8)	-8.8	-	-	+800	-	-	RNP1
002	DF	DONDO	-	-	-8.8	-	L	-	-	-	RNP1
003	TF	NAKAU	-	200 (191.6)	-8.8	23.7	-	+4000	-	-	RNP1

CHANGE : PROC renamed. PROC course. VAR.

STANDARD DEPARTURE CHART -INSTRUMENT



STANDARD DEPARTURE CHART -INSTRUMENT

RJNO / OKI

RNAV SID

OKUNI TWO DEPARTURE

RWY08

Serial Number	Path Descriptor	Waypoint Identifier	Fly Over	Course °M(°T)	Magnetic Variation	Distance (NM)	Turn Direction	Altitude (FT)	Speed (KIAS)	Vertical Angle	Navigation Specification
001	VA	-	-	077 (067.8)	-8.8	-	-	+700	-	-	RNP1
002	DF	TIBRI	-	-	-8.8	-	R	-	-	-	RNP1
003	TF	OKUNI	-	225 (216.2)	-8.8	42.4	-	+3000	-	-	RNP1

RWY26

Serial Number	Path Descriptor	Waypoint Identifier	Fly Over	Course °M(°T)	Magnetic Variation	Distance (NM)	Turn Direction	Altitude (FT)	Speed (KIAS)	Vertical Angle	Navigation Specification
001	VA	-	-	257 (247.8)	-8.8	-	-	+800	-	-	RNP1
002	DF	TIBRI	-	-	-8.8	-	L	-	-	-	RNP1
003	TF	OKUNI	-	225 (216.2)	-8.8	42.4	-	+3000	-	-	RNP1

CHANGE : PROC renamed. PROC course. VAR.

STANDARD DEPARTURE CHART -INSTRUMENT

RJNO / OKI

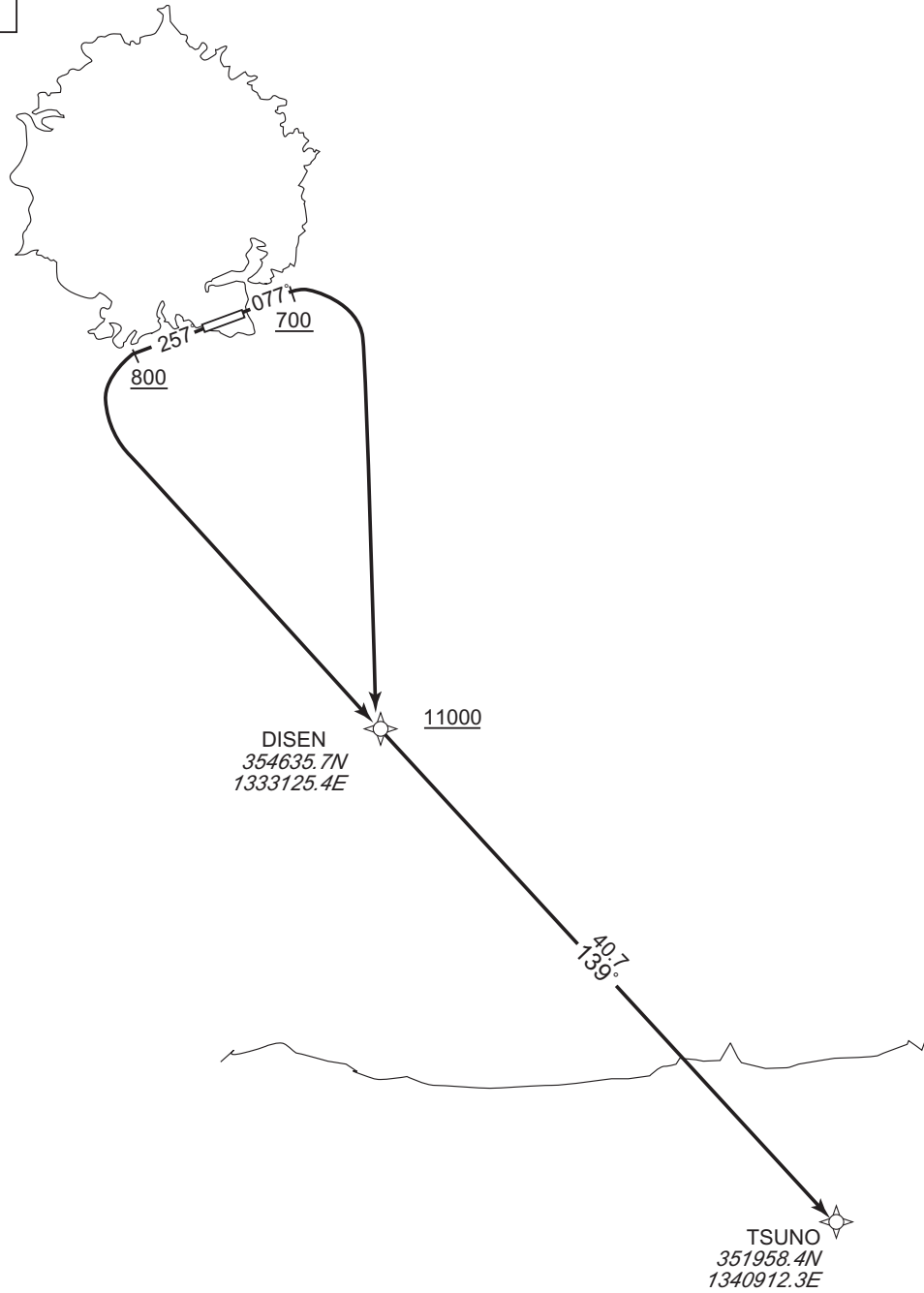
RNAV SID

TSUNO TWO DEPARTURE

RNP1

Note GNSS required.

VAR 9°W



CHANGE : PROC renamed. PROC course. VAR.

RWY08 : Climb on HDG 077° at or above 700FT, turn right direct to DISEN at or above 11000FT, to TSUNO.

RWY26 : Climb on HDG 257° at or above 800FT, turn left direct to DISEN at or above 11000FT, to TSUNO.

STANDARD DEPARTURE CHART -INSTRUMENT

RJNO / OKI

RNAV SID

TSUNO TWO DEPARTURE

RWY08

Serial Number	Path Descriptor	Waypoint Identifier	Fly Over	Course °M(°T)	Magnetic Variation	Distance (NM)	Turn Direction	Altitude (FT)	Speed (KIAS)	Vertical Angle	Navigation Specification
001	VA	-	-	077 (067.8)	-8.8	-	-	+700	-	-	RNP1
002	DF	DISEN	-	-	-8.8	-	R	+11000	-	-	RNP1
003	TF	TSUNO	-	139 (130.7)	-8.8	40.7	-	-	-	-	RNP1

RWY26

Serial Number	Path Descriptor	Waypoint Identifier	Fly Over	Course °M(°T)	Magnetic Variation	Distance (NM)	Turn Direction	Altitude (FT)	Speed (KIAS)	Vertical Angle	Navigation Specification
001	VA	-	-	257 (247.8)	-8.8	-	-	+800	-	-	RNP1
002	DF	DISEN	-	-	-8.8	-	L	+11000	-	-	RNP1
003	TF	TSUNO	-	139 (130.7)	-8.8	40.7	-	-	-	-	RNP1

CHANGE : PROC renamed. PROC course. VAR.

STANDARD ARRIVAL CHART-INSTRUMENT

RJNO / OKI

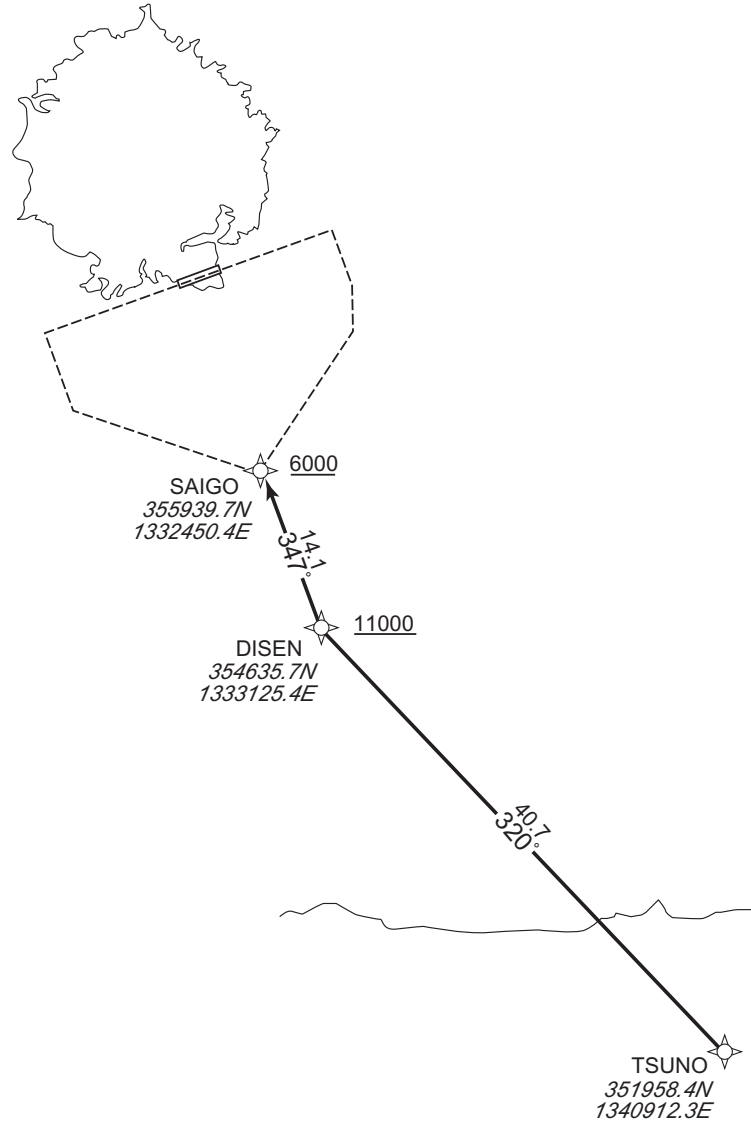
RNAV STAR

SAIGO ARRIVAL

RNP1

Note GNSS required.

VAR 9°W



CHANGE : PROC course. VAR.

From TSUNO, to DISEN at or above 11000FT, to SAIGO at or above 6000FT.

Serial Number	Path Descriptor	Waypoint Identifier	Fly Over	Course °M(°T)	Magnetic Variation	Distance (NM)	Turn Direction	Altitude (FT)	Speed (KIAS)	Vertical Angle	Navigation Specification
001	IF	TSUNO	—	—	-8.8	—	—	—	—	—	RNP1
002	TF	DISEN	—	320 (311.1)	-8.8	40.7	—	+11000	—	—	RNP1
003	TF	SAIGO	—	347 (337.8)	-8.8	14.1	—	+6000	—	—	RNP1

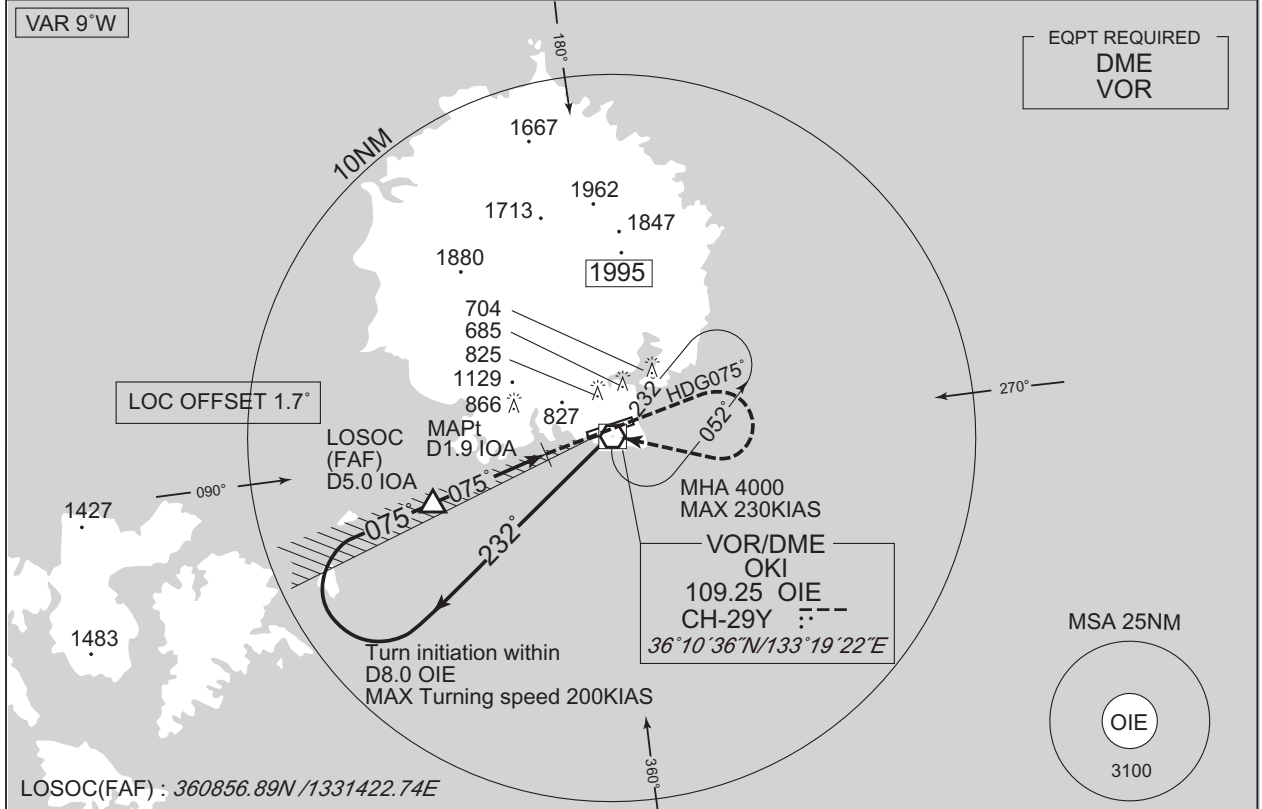
INTENTIONALLY LEFT BLANK

INSTRUMENT APPROACH CHART

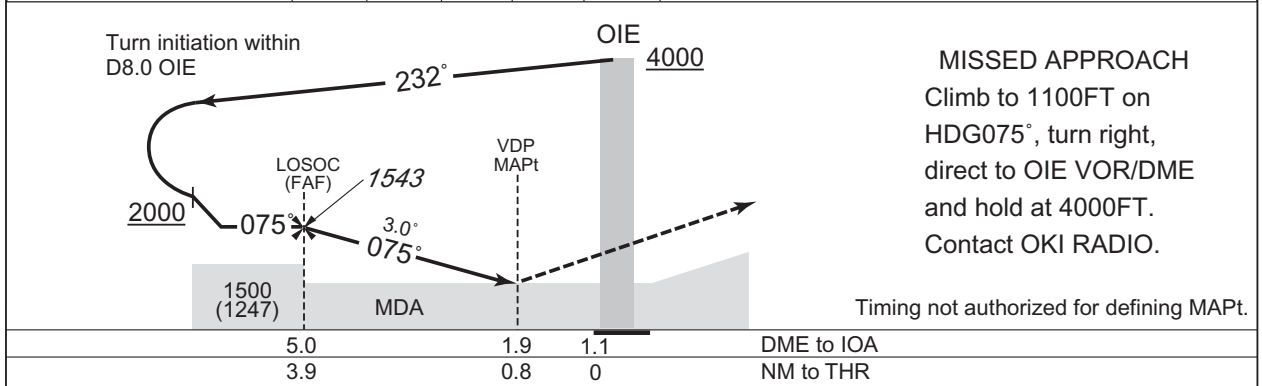
RJNO / OKI

LOC Z RWY08

KOBE CONTROL 133.8 – 126.1 287.6 – 278.2	OKI LOC 111.55 IOA --- LOC - DME CH-52Y 36°11'00"N/133°20'02"E	OKI RADIO 118.65 AFIS provided by Osaka Airport Office	NO RADAR
--	---	---	----------



NM to IOA	FAF	4	3	2	MAPt
ALT (3.0° APCH Path)	1543	1219	901	582	-



Timing not authorized for defining MAPt.

Missed APCH climb gradient MNM 4.0%

MINIMA		THR elev. 253	AD elev. 262	
CAT	CIRCLING			
	MDA(H)	CMV	MDA(H)	VIS
	550 (297)	1500	730 (468)	1600
		1600	830 (568)	2400
1800		960 (698)	3200	

Circling to SOUTH side of RWY only.
MINIMA with Missed APCH climb gradient of 2.5% are not established.

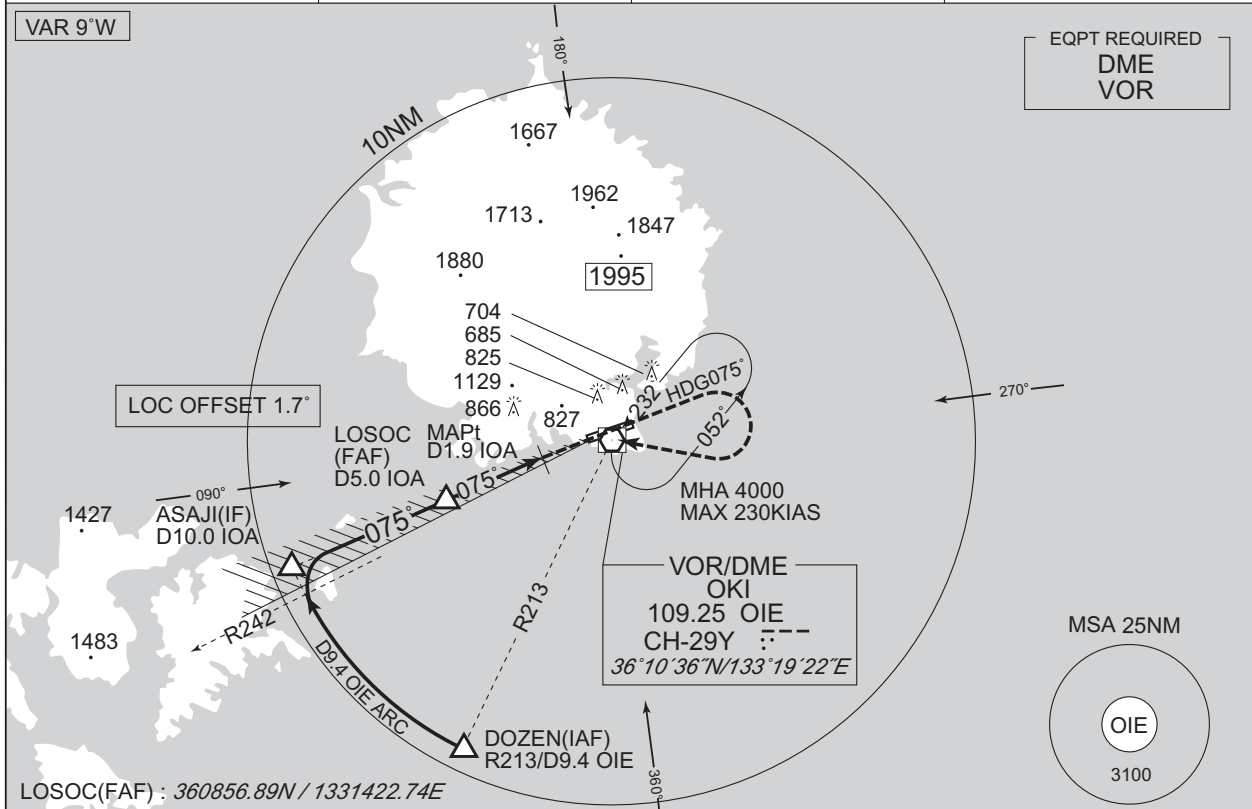
CHANGE : FREQ for KOBE CONTROL.

INSTRUMENT APPROACH CHART

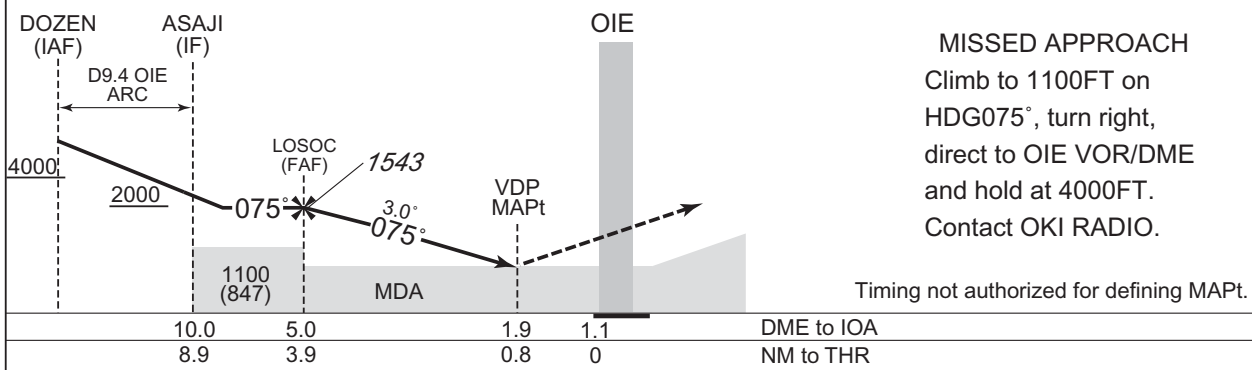
RJNO / OKI

LOC Y RWY08

KOBE CONTROL 133.8 – 126.1 287.6 – 278.2	OKI LOC 111.55 IOA --- LOC - DME CH-52Y 36°11'00"N/133°20'02"E	OKI RADIO 118.65 AFIS provided by Osaka Airport Office	NO RADAR
--	---	---	----------



NM to IOA	FAF	4	3	2	MAPt
ALT (3.0° APCH Path)	1543	1219	901	582	-



CHANGE : FREQ for KOBE CONTROL.

Missed APCH climb gradient MNM 4.0%

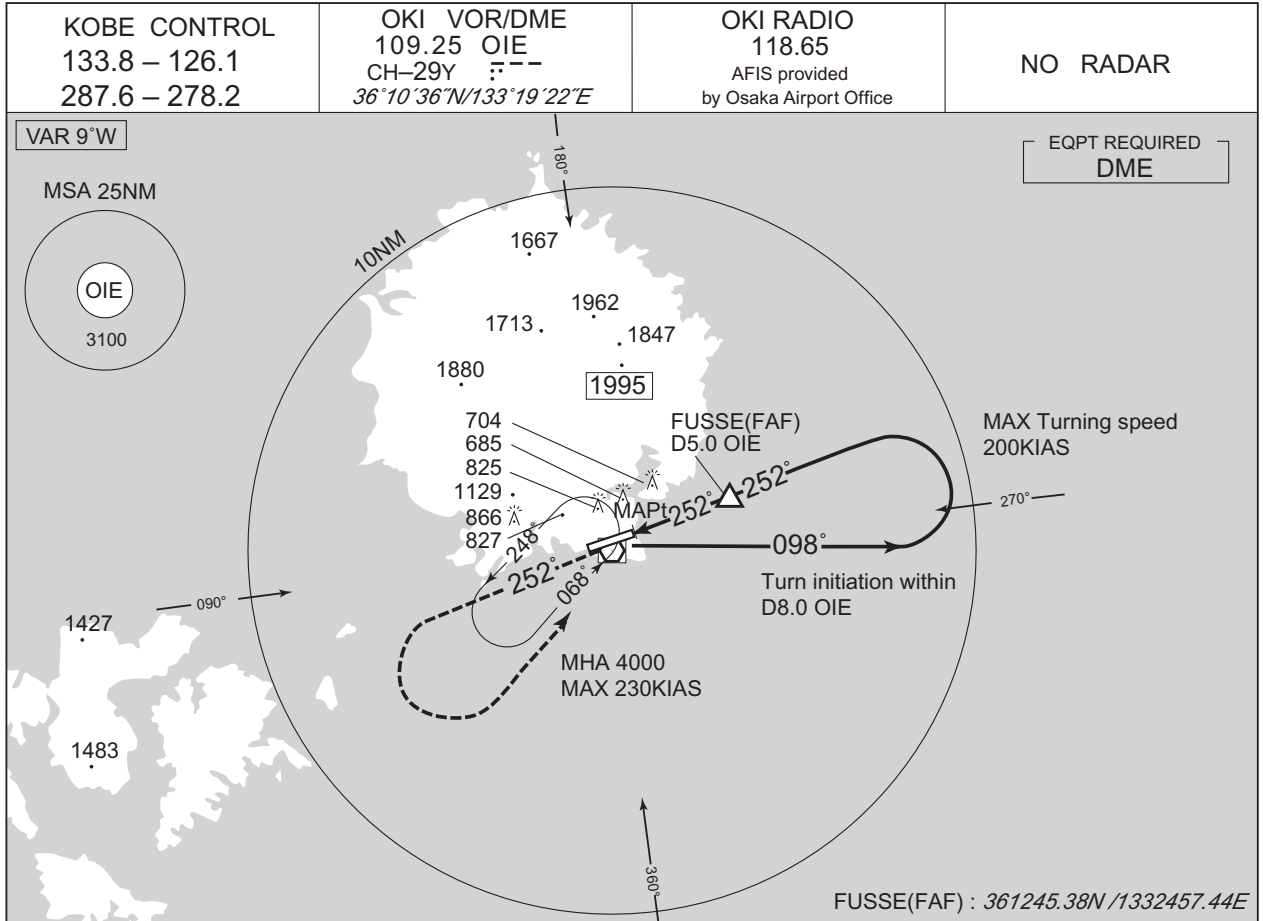
MINIMA		THR elev. 253	AD elev. 262
CAT	MDA(H)		CIRCLING
	550 (297)	CMV	MDA(H) VIS
		1500	730 (468) 1600
		1600	830 (568) 2400
D	1800	960 (698) 3200	

Circling to SOUTH side of RWY only.
MINIMA with Missed APCH climb gradient of 2.5% are not established.

INSTRUMENT APPROACH CHART

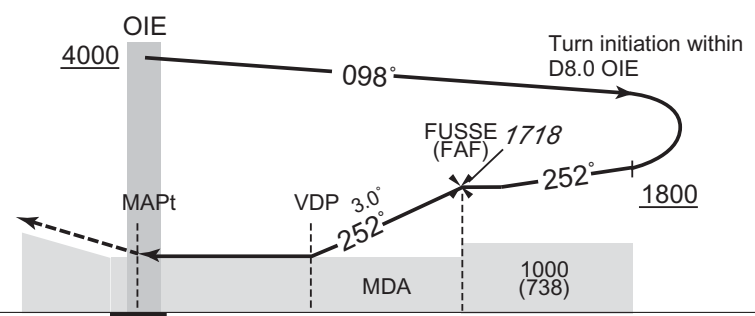
RJNO / OKI

VOR RWY26



NM to OIE	MAPt	3	4	FAF
ALT (3.0° APCH Path)	–	1081	1400	1718

MISSED APPROACH
Climb to 1800FT via OIE
R252, turn left, direct to OIE
VOR/DME and hold at 4000FT.
Contact OKI RADIO.



Timing not authorized for defining MAPt.

DME to OIE	0.7	2.7	5.0
NM to THR	0	2.0	4.4

MINIMA		THR elev. 272	AD elev. 262	
CAT			CIRCLING	
	MDA(H)	CMV	MDA(H)	VIS
A	920 (658)	1500	920 (658)	1600
B				2400
C	2000	2000	960 (698)	3200
D				

Circling to SOUTH side of RWY only.

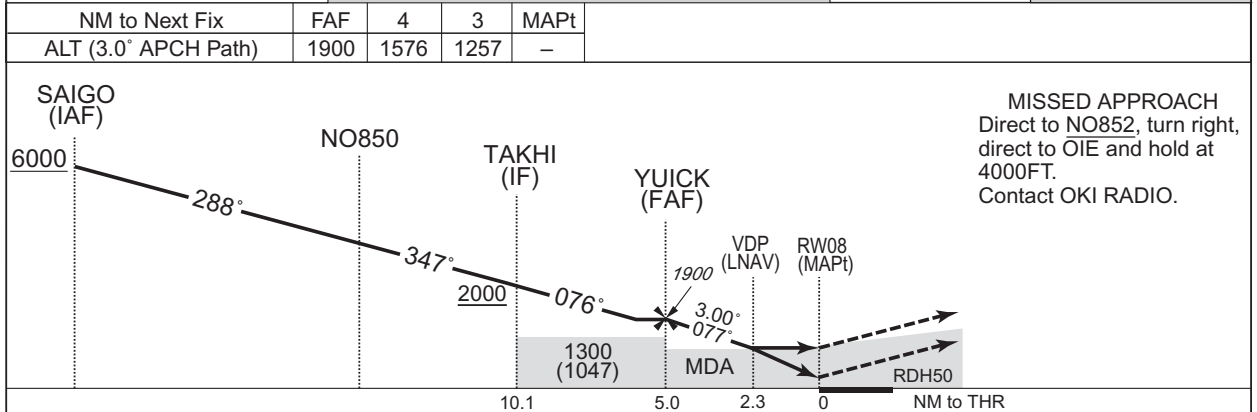
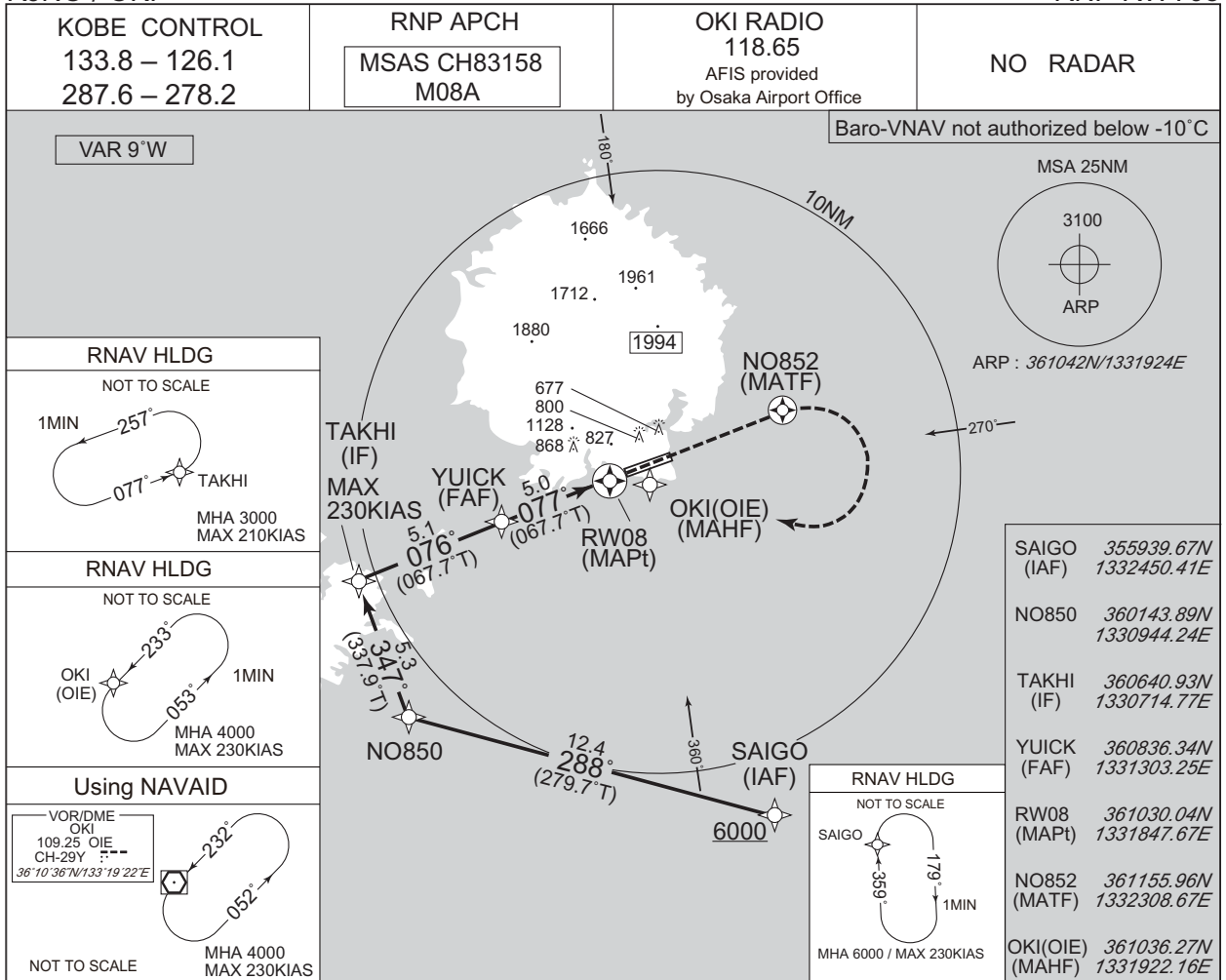
CHANGE : FREQ for KOBE CONTROL.

INTENTIONALLY LEFT BLANK

INSTRUMENT APPROACH CHART

RJNO / OKI

RNP RWY08



CHANGE : FREQ for KOBE CONTROL.

Missed APCH climb gradient MNM 5.0%

MINIMA		THR elev. 253		AD elev. 262				
CAT	LPV		LNAV/VNAV		LNAV		CIRCLING	
	DA(H)	CMV	DA(H)	CMV	MDA(H)	CMV	MDA(H)	VIS
A	591 (338)	1500	742 (489)	1500	1010 (757)	1500	1010 (748)	1600
B	601 (348)							2400
C	611 (358)	1800	2000	2000	2000	2000	2000	3200
D	621 (368)	2000						3200

Circling to SOUTH side of RWY only.
MINIMA with Missed APCH climb gradient of 2.5% are not established.

INSTRUMENT APPROACH CHART

RJNO / OKI

RNP RWY08

FAS DATA BLOCK

Operation type	0	LTP/FTP ellipsoidal height	+01107
SBAS service provider identifier	2	FPAP latitude	361054.4595N
Airport identifier	RJNO	FPAP longitude	1332001.8525E
Runway	08	Threshold crossing height	00015.0
Approach performance designator	0	TCH units selector	1
Route indicator		Glide path angle	03.00
Reference path data selector	0	Course width at threshold	105.00
Reference path ID	M08A	∠ length offset	0000
LTP/FTP latitude	361030.0320N	HAL	40.0
LTP/FTP longitude	1331847.7060E	VAL	50.0
CRC remainder	1A0AB58B		

Required additional data

LTP/FTP orthometric height	76.8
----------------------------	------

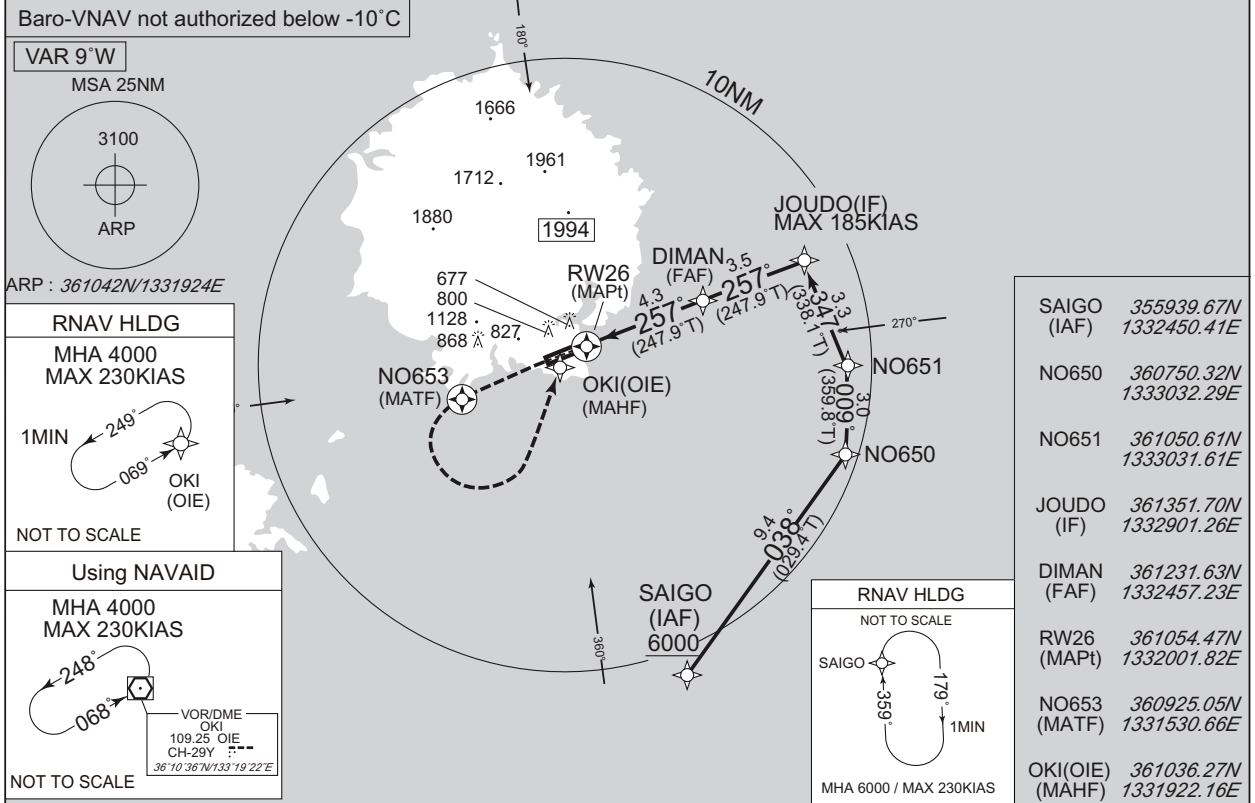
CHANGE : FAS DATA BLOCK, Required additional data established.

INSTRUMENT APPROACH CHART

RJNO / OKI

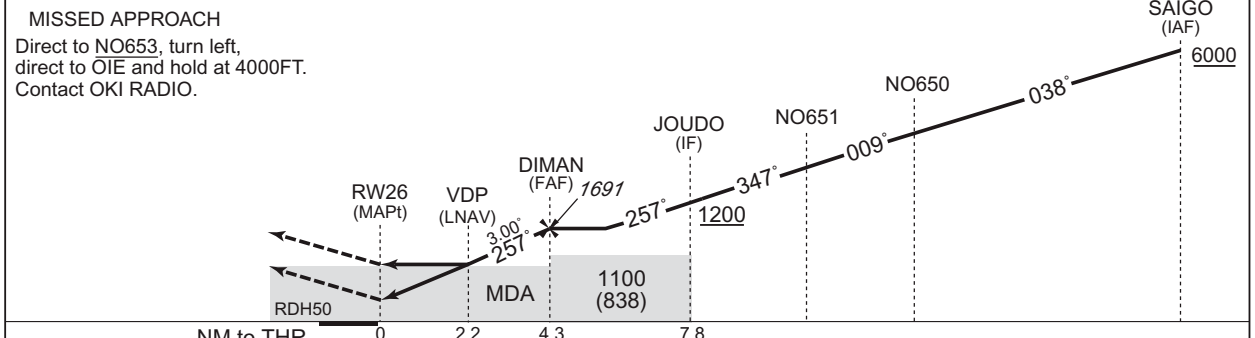
RNP RWY26

KOBE CONTROL 133.8 – 126.1 287.6 – 278.2	RNP APCH MSAS CH66498 M26A	OKI RADIO 118.65 AFIS provided by Osaka Airport Office	NO RADAR
--	----------------------------------	---	----------



SAIGO	355939.67N	1332450.41E
NO650	360750.32N	1333032.29E
NO651	361050.61N	1333031.61E
JOUDO (IF)	361351.70N	1332901.26E
DIMAN (FAF)	361231.63N	1332457.23E
RW26 (MAPt)	361054.47N	1332001.82E
NO653 (MATF)	360925.05N	1331530.66E
OKI(OIE) (MAHF)	361036.27N	1331922.16E

NM to Next Fix	MAPt	3	4	FAF
ALT (3.0° APCH Path)	-	1277	1595	1691



MISSED APPROACH
Direct to NO653, turn left, direct to OIE and hold at 4000FT. Contact OKI RADIO.

Missed APCH climb gradient MNM 5.0%

MINIMA		THR elev. 272		AD elev. 262				
CAT	LPV		LNAV/VNAV		LNAV		CIRCLING	
	DA(H)	CMV	DA(H)	CMV	MDA(H)	CMV	MDA(H)	VIS
A	575 (303)	1500	792 (520)	1500	1000 (738)	1500	1000 (738)	1600
B	584 (312)							2400
C	594 (322)	1800	2000	2000	2000	2000	2000	3200
D	604 (332)	2000						3200

Circling to SOUTH side of RWY only.
MINIMA with Missed APCH climb gradient of 2.5% are not established.

CHANGE : FREQ for KOBE CONTROL.

INSTRUMENT APPROACH CHART

RJNO / OKI

RNP RWY26

FAS DATA BLOCK

Operation type	0	LTP/FTP ellipsoidal height	+01168
SBAS service provider identifier	2	FPAP latitude	361030.0320N
Airport identifier	RJNO	FPAP longitude	1331847.7060E
Runway	26	Threshold crossing height	00015.0
Approach performance designator	0	TCH units selector	1
Route indicator		Glide path angle	03.00
Reference path data selector	0	Course width at threshold	105.00
Reference path ID	M26A	∠ length offset	0000
LTP/FTP latitude	361054.4595N	HAL	40.0
LTP/FTP longitude	1332001.8525E	VAL	50.0
CRC remainder	BB23D7F9		

Required additional data

LTP/FTP orthometric height	82.9
----------------------------	------

CHANGE : FAS DATA BLOCK, Required additional data established.

RJNO / OKI

Visual REP



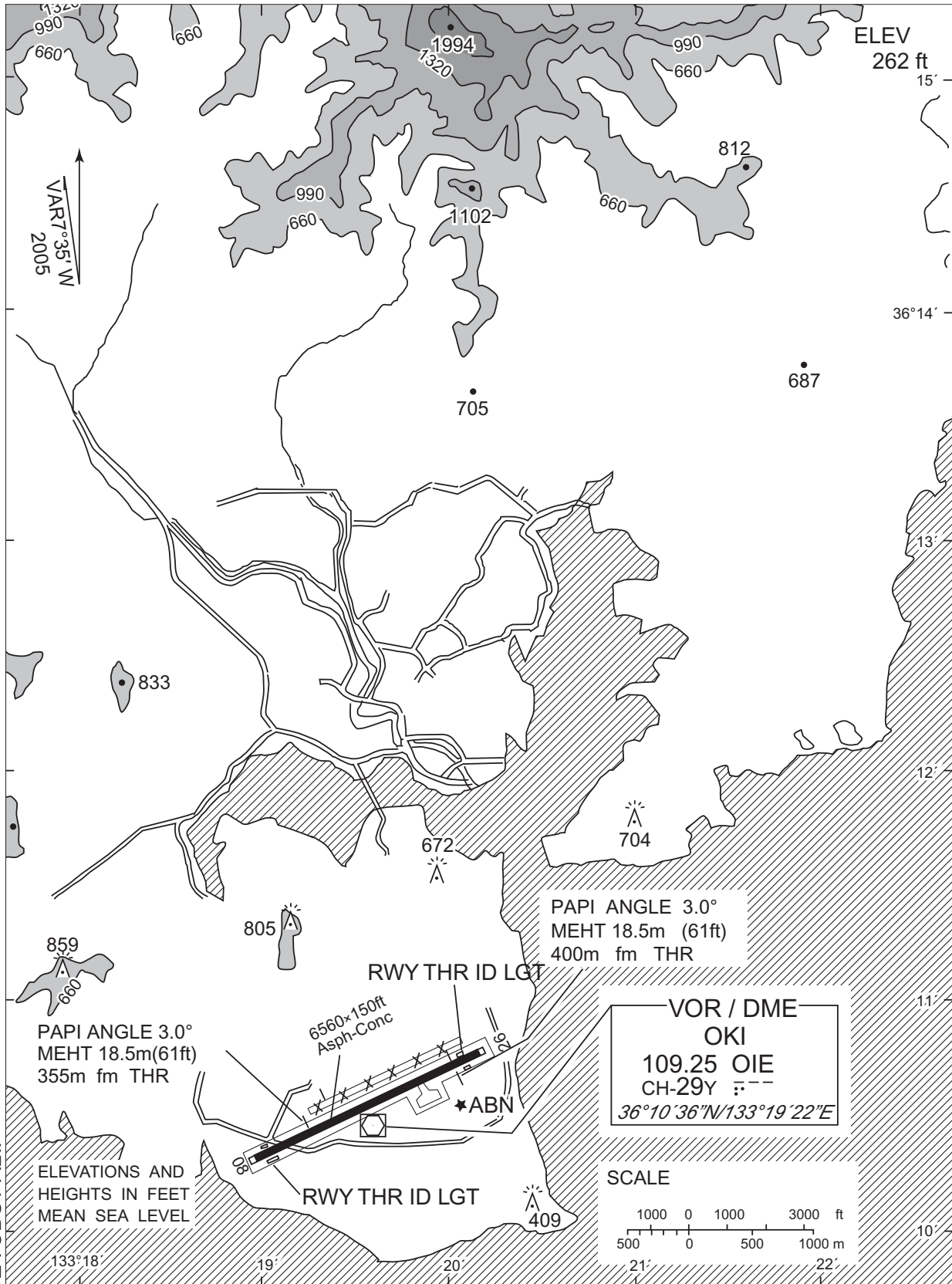
CHANGE : Call sign(REMOTE→RADIO).

※図中に標高を示す数字がある場合、単位はメートル(m)である。The unit of measurement used to express elevation is meter(m).

Call sign	BRG / DIST from ARP	Remarks
ポイント アルファ Point Alfa	212°T / 10.0NM	海上 Over the sea
ポイント ブラボー Point Bravo	193°T / 10.0NM	海上 Over the sea
ポイント チャーリー Point Charlie	149°T / 10.0NM	空港標点と倉吉市(JR倉吉駅)とを結ぶ直線上 On the straight line connecting ARP and Kurayoshi City.(JR Kurayoshi Station)

RJNO / OKI

LDG CHART



CHANGE : OBST ALT.

注： 隠岐空港の北側に廃止された滑走路が(なお、禁止標識が6カ所設置されている)視認できる状態であるので、隠岐空港に着陸する航空機は当該滑走路と誤認しないように注意すること。

NOTE: There is remained the abolished runway with 6 closed markings at north side of Oki Airport. As the abolished runway in sharp is visible, the aircraft which will land on Oki airport shall pay a special attention not to confuse the runway.

RJNO / OKI

Minimum Vectoring Altitude CHART

