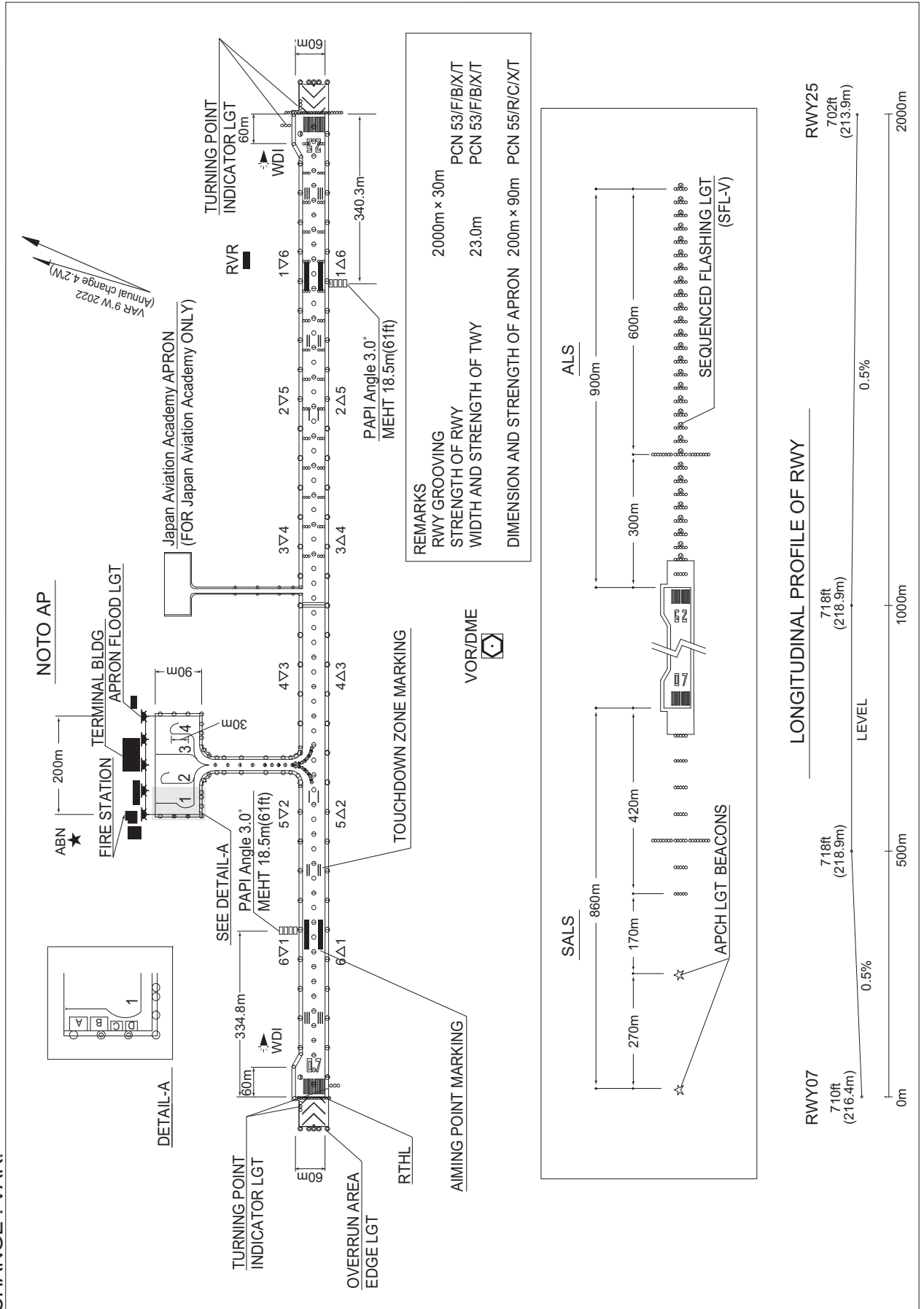


RJNW / NOTO

AD CHART

CHANGE : VAR.



STANDARD DEPARTURE CHART -INSTRUMENT

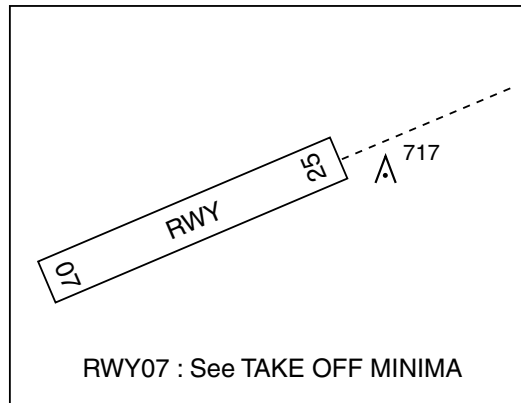
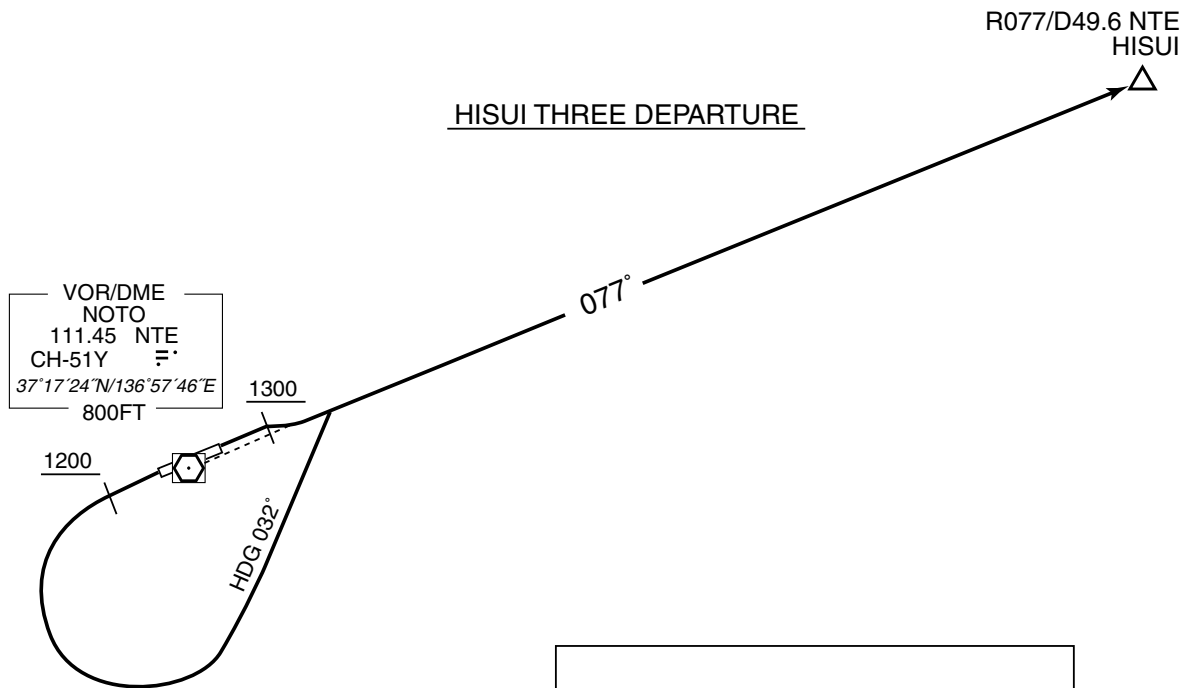
RJNW / NOTO

SID

HISUI THREE DEPARTURE

RWY07 : Climb RWY HDG to 1300FT, turn right...

RWY25 : Climb RWY HDG to 1200FT, turn left HDG 032° ...
...to intercept and proceed via NTE R077 to HISUI.



STANDARD DEPARTURE CHART -INSTRUMENT

RJNW / NOTO

SID

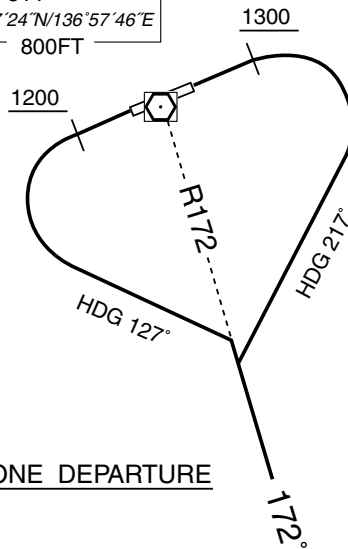
URUSI ONE DEPARTURE

RWY07 : Climb RWY HDG to 1300FT, turn right HDG217° ...

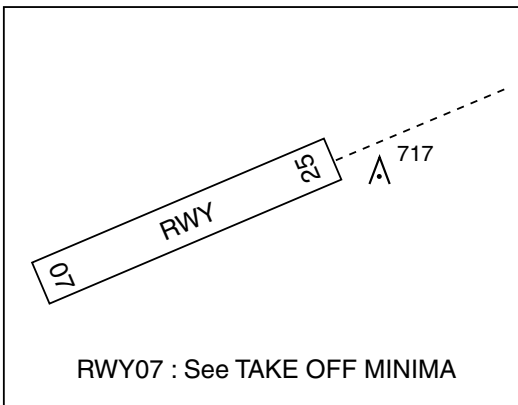
RWY25 : Climb RWY HDG to 1200FT, turn left HDG127° ...
...to intercept and proceed via NTE R172 to URUSI.

Cross URUSI at or above 8000FT.

VOR/DME
NOTO
111.45 NTE
CH-51Y $\overline{\text{F}}$
37°17'24"N/136°57'46"E
800FT



URUSI ONE DEPARTURE



△ URUSI R172/D29.4 NTE
8000

STANDARD ARRIVAL CHART -INSTRUMENT

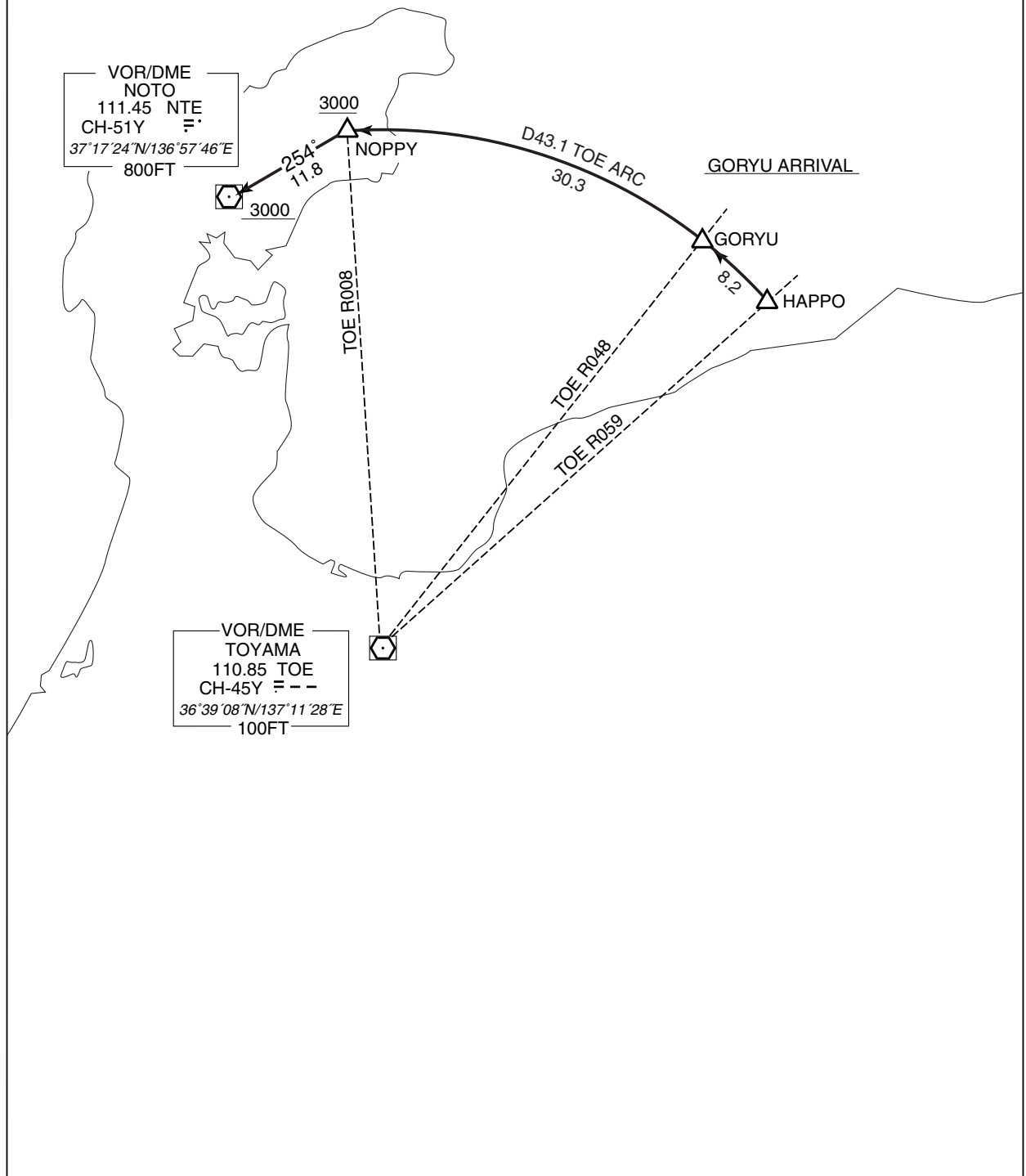
RJNW / NOTO

STAR

GORYU ARRIVAL

From over HAPPO or GORYU, via TOE 43.1DME counterclockwise ARC to NOPPY or to intercept and proceed via NTE R074 to NTE VOR/DME.

Cross NOPPY at or above 3000FT, cross NTE VOR/DME at or above 3000FT.



STANDARD ARRIVAL CHART -INSTRUMENT

RJNW / NOTO

RNAV STAR RWY07

KILCO ARRIVAL

RNP1

Note GNSS required.

VAR 8°W (2017)

VOR/DME
NOTO
111.45 NTE
CH-51Y
37°17'24"N/136°57'46"E
800FT

KILCO ARRIVAL

KILCO
370843.1N
1372519.8E
6000

HAPPO
370604.9N
1375320.7E

22.5
285°

CHANGE : Navigation Specification(Basic RNP1 → RNP1).

KILCO ARRIVAL

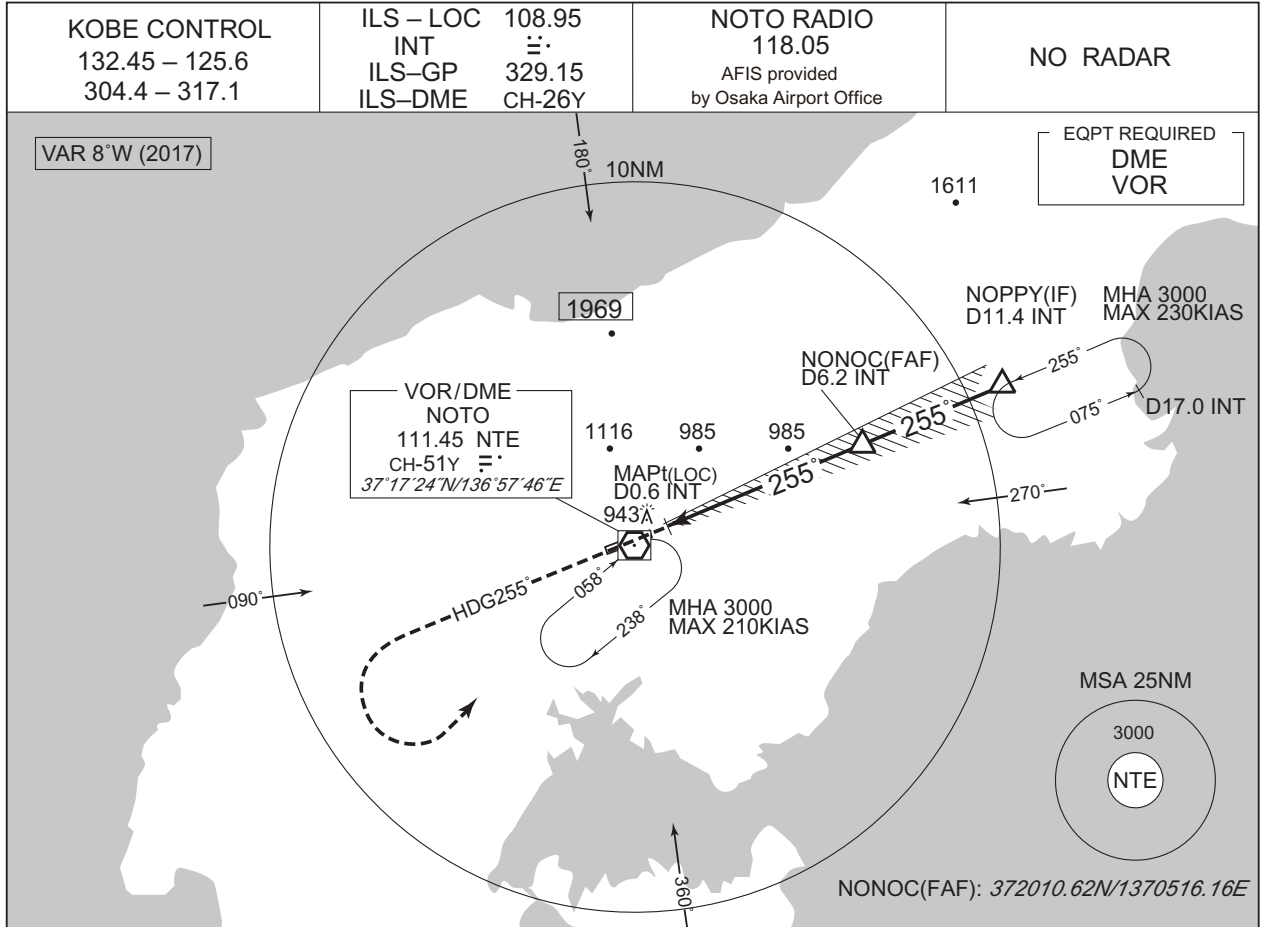
From HAPPO, to KILCO at or above 6000FT.

Serial Number	Path Descriptor	Waypoint Identifier	Fly Over	Course °M(°T)	Magnetic Variation	Distance (NM)	Turn Direction	Altitude (FT)	Speed (KIAS)	Vertical Angle	Navigation Specification
001	IF	HAPPO	-	-	-8.3	-	-	-	-	-	RNP1
002	TF	KILCO	-	285 (276.9)	-8.3	22.5	-	+6000	-	-	RNP1

INSTRUMENT APPROACH CHART

RJNW / NOTO

ILS Z or LOC Z RWY25

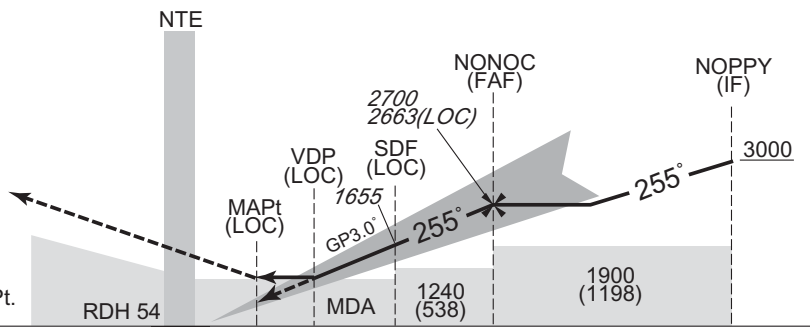


	NM to INT	MAPt	2	3	4	5	6	FAF
	ALT (3.0° APCH Path)	-	1336	1655	1974	2292	2611	2663

CHANGE : ATC call sign(TOKYO CONTROL → KOBE CONTROL).

MISSED APPROACH
Climb to 2000FT on HDG255°, turn left, direct to NTE VOR/DME and hold at 3000FT. Contact NOTO RADIO.

Timing not authorized for defining the MAPt.



DME to INT	0.2	0.6	1.6	3.0	6.2	11.4
NM to THR	0	0.5	1.4	2.8	6.0	11.3

Missed APCH climb gradient MNM 5.0%

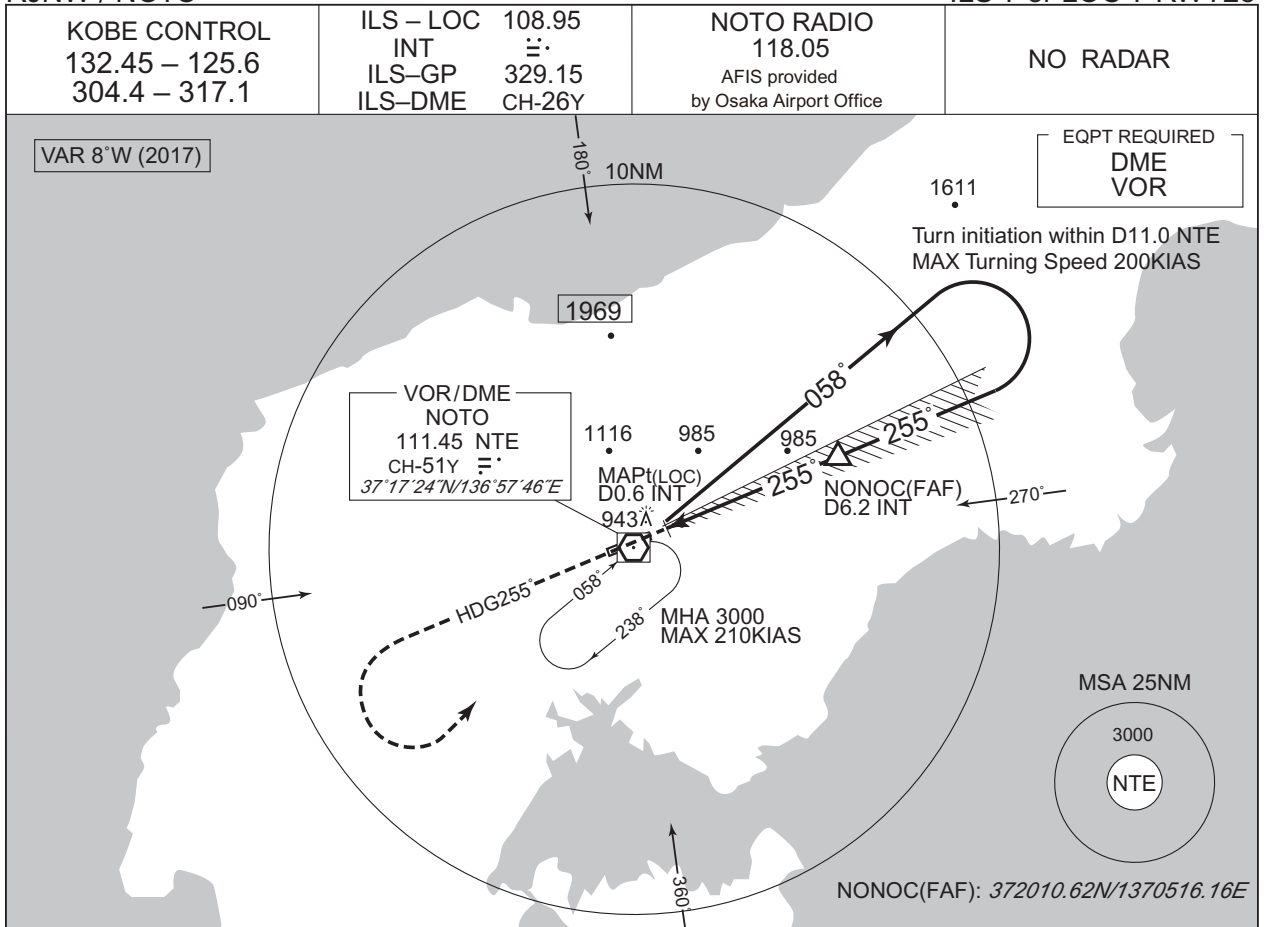
MINIMA		THR elev. 702		AD elev. 718		
CAT	CAT I		LOC		CIRCLING	
	DA(H)	RVR/CMV	MDA(H)	RVR/CMV	MDA(H)	VIS
A	902 (200)	550	1170 (468)	1000	1260 (542)	1600
B				1200		
C				1280 (562)	2400	
D				1600	1420 (702)	3200

MINIMA with Missed APCH climb gradient of 2.5% are not established.

INSTRUMENT APPROACH CHART

RJNW / NOTO

ILS Y or LOC Y RWY25

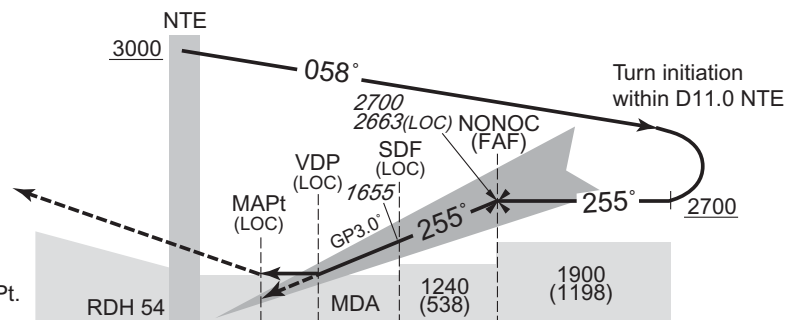


NM to INT	MAPt	2	3	4	5	6	FAF
ALT (3.0° APCH Path)	-	1336	1655	1974	2292	2611	2663

MISSED APPROACH

Climb to 2000FT on HDG255°, turn left, direct to NTE VOR/DME and hold at 3000FT.
Contact NOTO RADIO.

Timing not authorized for defining the MAPt.



DME to INT	0.2	0.6	1.6	3.0	6.2
NM to THR	0	0.5	1.4	2.8	6.0

Missed APCH climb gradient MNM 5.0%

MINIMA		THR elev. 702		AD elev. 718		
CAT	CAT I		LOC		CIRCLING	
	DA(H)	RVR/CMV	MDA(H)	RVR/CMV	MDA(H)	VIS
A	902 (200)	550	1170 (468)	1000	1260 (542)	1600
B				1200		
C				1280 (562)	2400	
D				1600	1420 (702)	3200

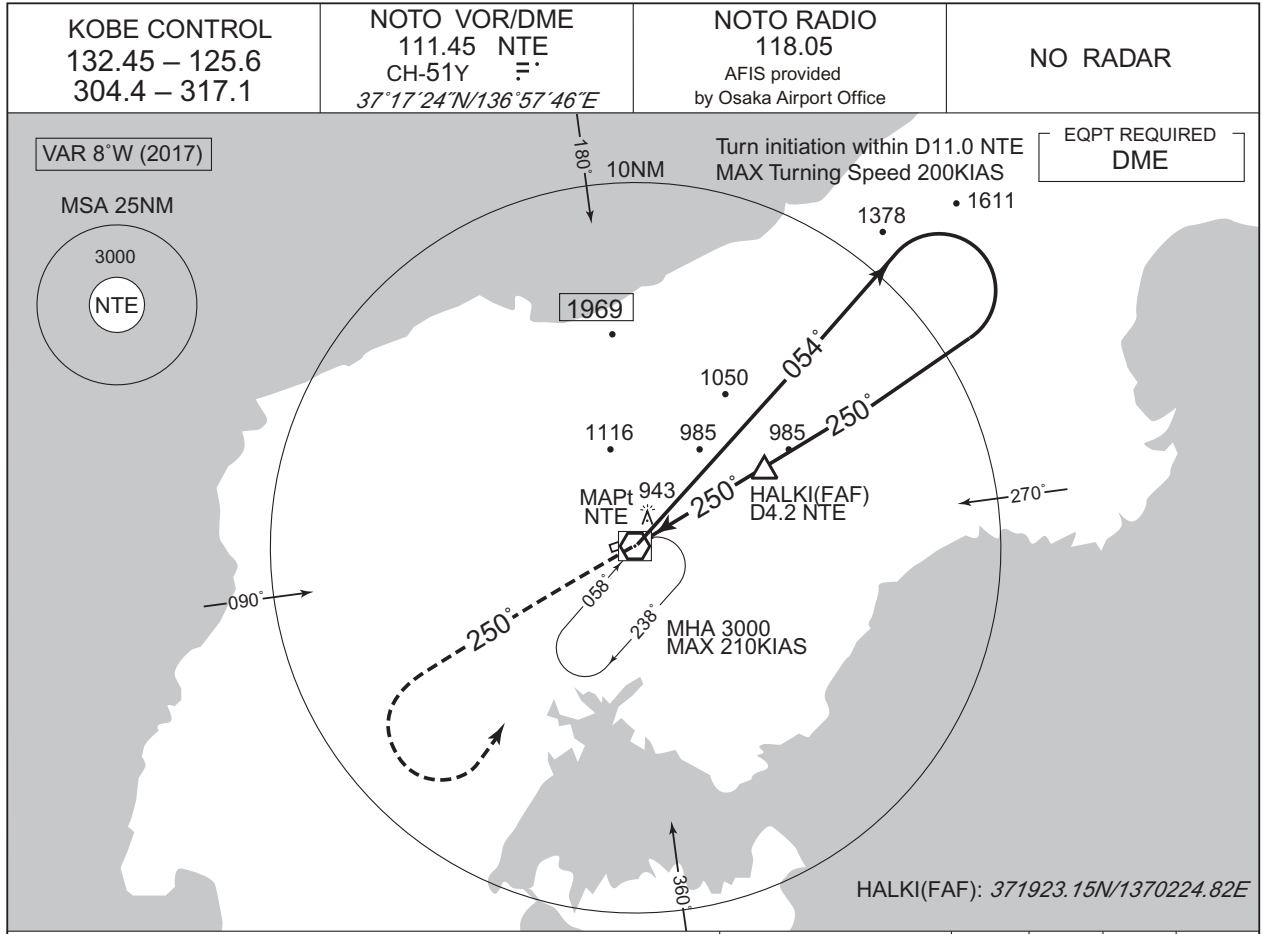
MINIMA with Missed APCH climb gradient of 2.5% are not established.

CHANGE : ATC call sign(TOKYO CONTROL → KOBE CONTROL).

INSTRUMENT APPROACH CHART

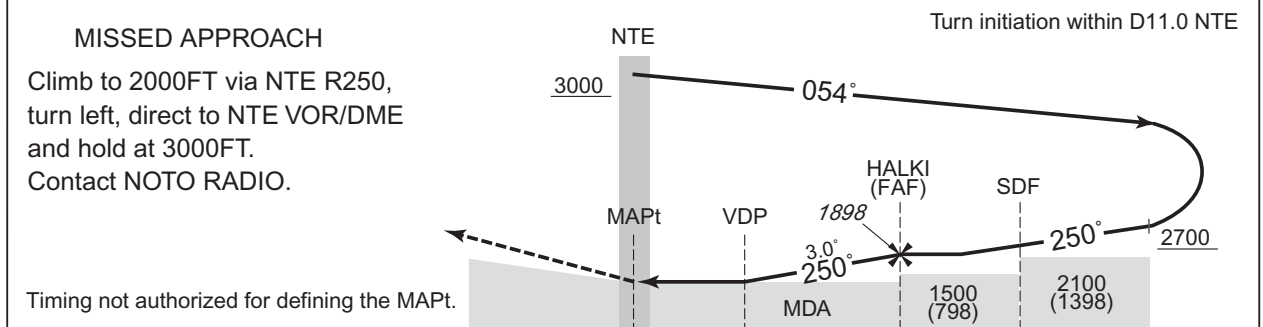
RJNW / NOTO

VOR RWY25



CHANGE : ATC call sign(TOKYO CONTROL → KOBE CONTROL).

	NM to NTE	MAPt	3	4	FAF
ALT (3.0° APCH Path)	-	1515	1834	1898	



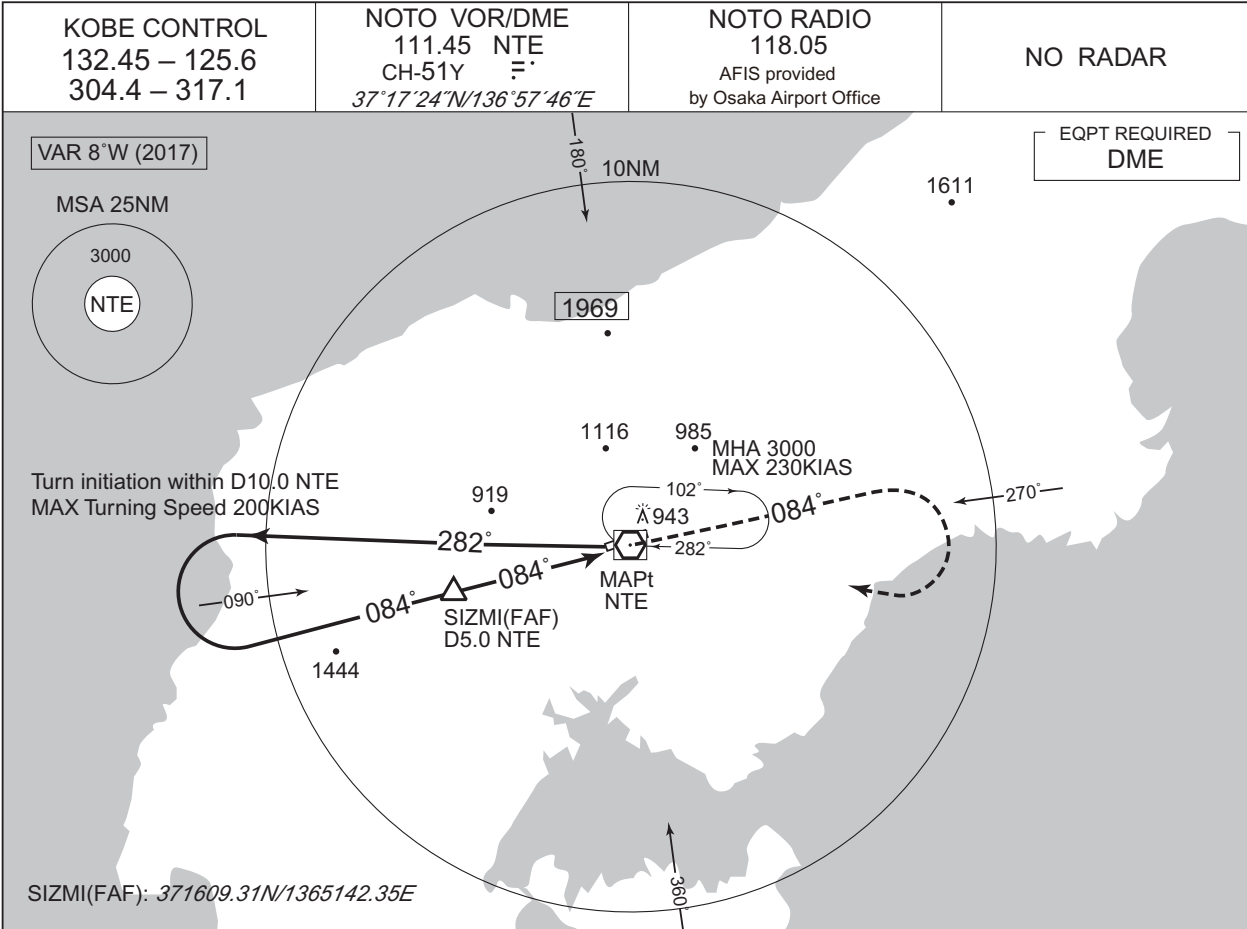
DME to NTE	0.6	2.2	4.2	8.0
NM to THR	0	1.6	3.6	7.4

MINIMA		THR elev. 702	AD elev. 718	
CAT			CIRCLING	
	MDA(H)	RVR/CMV	MDA(H)	VIS
A	1240 (538)	1000	1260 (542)	1600
B		1200		
C		1200	1280 (562)	2400
D		1600	1420 (702)	3200

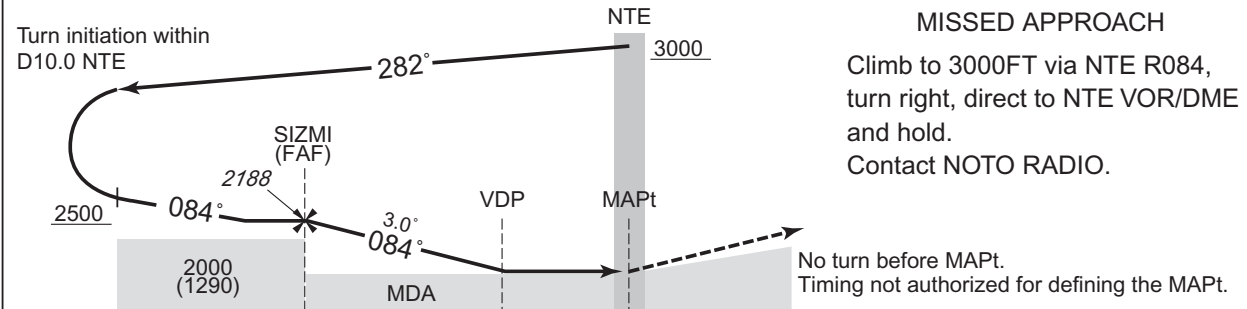
INSTRUMENT APPROACH CHART

RJNW / NOTO

VOR RWY07



NM to NTE	FAF	4	3	2	MAPt
ALT (3.0° APCH Path)	2188	1870	1552	1233	-



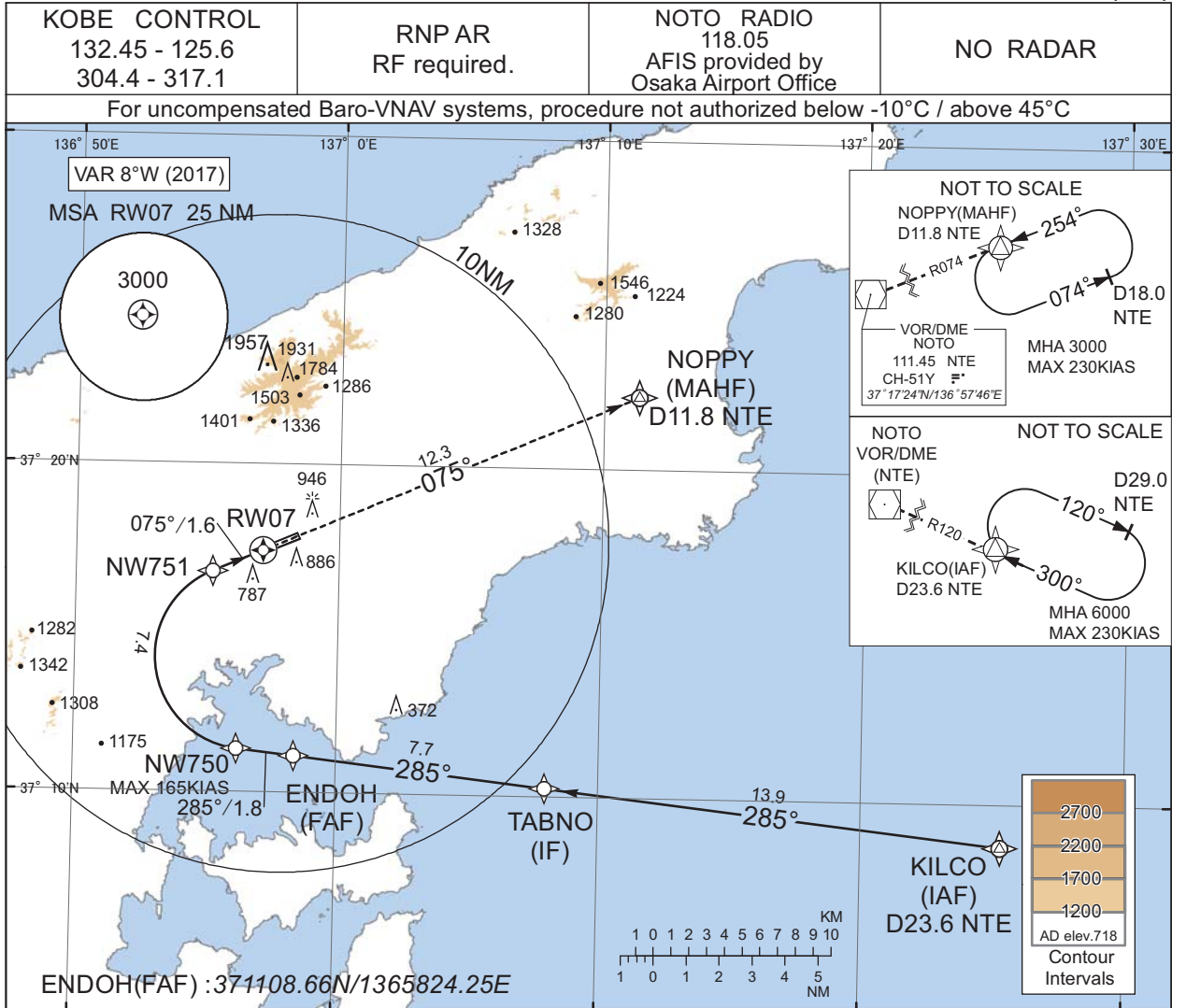
DME to NTE	5.0	1.7	0.5
NM to THR	4.5	1.2	0

MINIMA		THR elev. 710	AD elev. 718
CAT	MDA(H)		CIRCLING
	MDA(H)	CMV	MDA(H) VIS
A	1140 (430)	1200	1260 (542) 1600
B		1300	
C		1400	1280 (562) 2400
D		1600	1420 (702) 3200

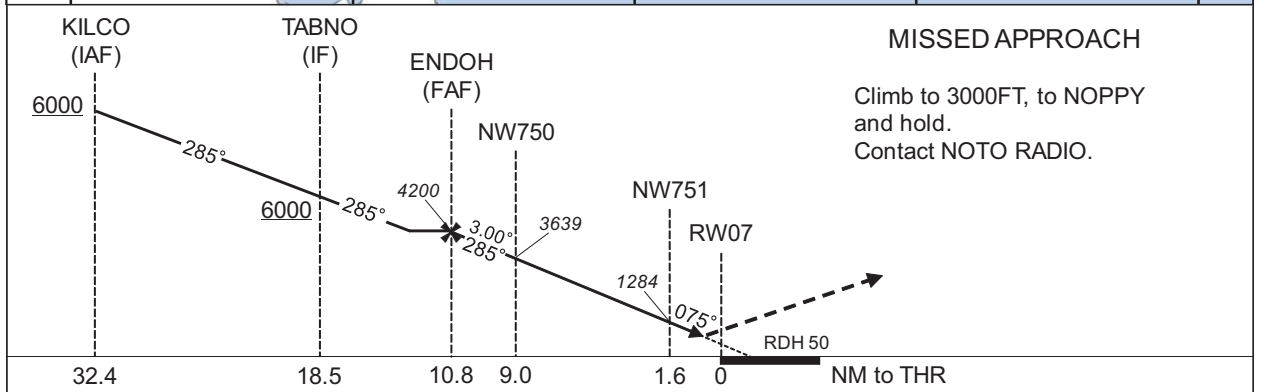
CHANGE : ATC call sign(TOKYO CONTROL → KOBE CONTROL).

INSTRUMENT APPROACH CHART

RJNW / NOTO RNP Z RWY07(AR)



CHANGE : ATC call sign (TOKYO CONTROL → KOBE CONTROL).



Missed APCH climb gradient MNM 3.2%

MINIMA	THR elev. 710	AD elev. 718
CAT	RNP 0.30	
	DA(H)	CMV
A	-	-
B	-	-
C	1010(300)	1400
D	1010(300)	1600

Authorization Required

MINIMA with Missed APCH climb gradient of 2.5% are not established.

INSTRUMENT APPROACH CHART

RJNW / NOTO

RNP Z RWY07(AR)

Coding Table

Serial Number	Path Descriptor	Waypoint Identifier	Fly Over	Course °M(°T)	Magnetic Variation	Distance (NM)	Turn Direction	Altitude (FT)	Speed (KIAS)	VPA/RDH (°/FT)	RNP Value
001	IF	KILCO	-	-	-8.3	-	-	+6000	-	-	-
002	TF	TABNO	-	285 (276.6)	-8.3	13.9	-	+6000	-	-	1.0
003	TF	ENDOH	-	285 (276.4)	-8.3	7.7	-	4200	-	-	1.0
004	TF	NW750	-	285 (276.3)	-8.3	1.8	-	3639	-165	-3.00	0.3
005	RF Center: NWRF1 r=2.82NM	NW751	-	-	-8.3	7.4	R	1284	-	-3.00	0.3
006	TF	RW07	Y	075 (066.6)	-8.3	1.6	-	760	-	-3.00/50	0.3
007	TF	NOPPY	-	075 (066.7)	-8.3	12.3	-	3000	-	-	1.0

Waypoint Coordinates

Waypoint Identifier	Coordinates	RF Arc Center Identifier	Coordinates
KILCO	370843.05N / 1372519.77E	NWRF1	371408.38N / 1365636.03E
TABNO	371017.61N / 1370758.59E		
ENDOH	371108.66N / 1365824.25E		
NW750	371120.22N / 1365612.92E		
NW751	371643.80N / 1365512.45E		
RW07	371722.92N / 1365706.38E		
NOPPY	372214.69N / 1371120.01E		

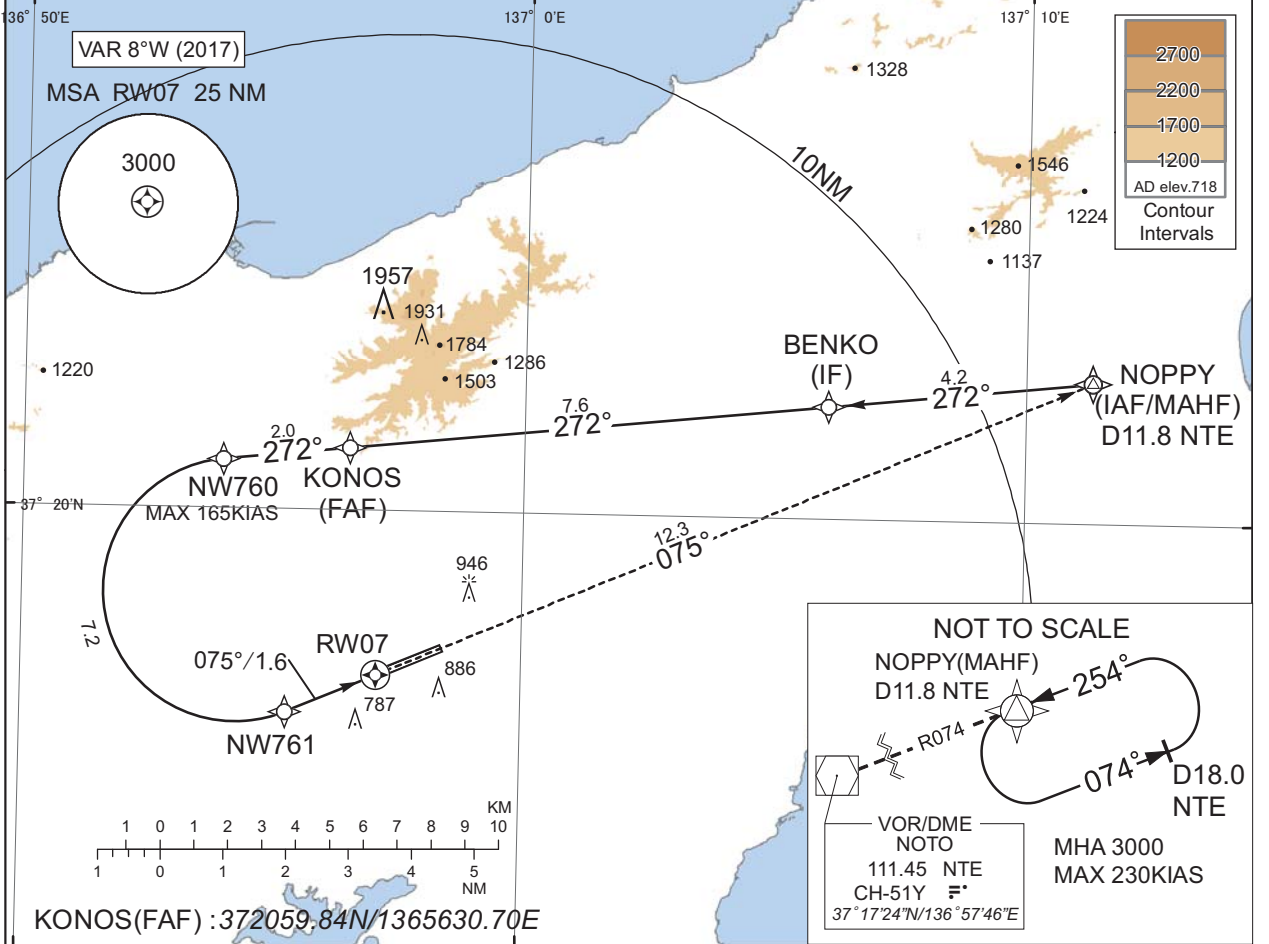
CHANGE : PROC renamed.

INSTRUMENT APPROACH CHART

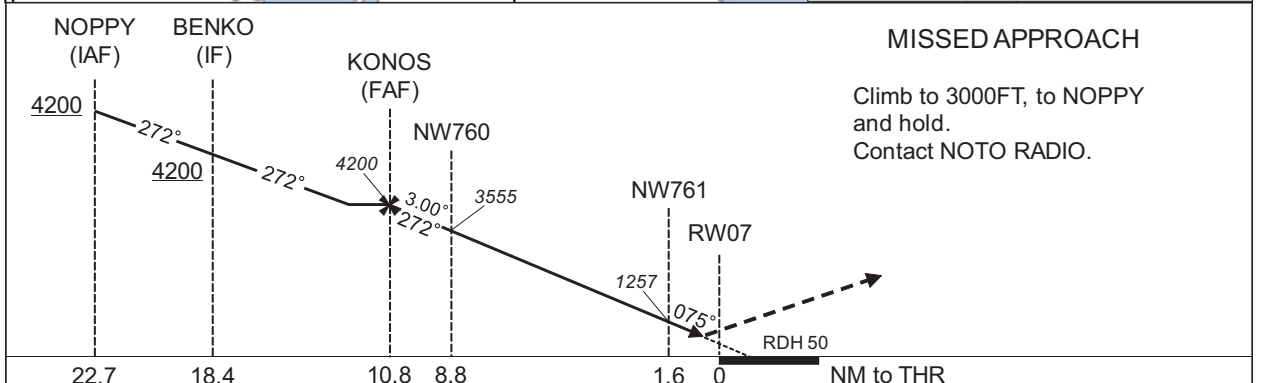
RJNW / NOTO RNP Y RWY07(AR)

KOBE CONTROL 132.45 - 125.6 304.4 - 317.1	RNP AR RF required.	NOTO RADIO 118.05 AFIS provided by Osaka Airport Office	NO RADAR
---	------------------------	--	----------

For uncompensated Baro-VNAV systems, procedure not authorized below -10°C / above 45°C



CHANGE : ATC call sign (TOKYO CONTROL → KOBE CONTROL).



MISSED APPROACH
Climb to 3000FT, to NOPPY and hold.
Contact NOTO RADIO.

Missed APCH climb gradient MNM 3.2%

MINIMA	THR elev. 710	AD elev. 718
CAT	RNP 0.30	
	DA(H)	CMV
A	-	-
B	-	-
C	1010(300)	1400
D	1010(300)	1600

Authorization Required

MINIMA with Missed APCH climb gradient of 2.5% are not established.

INSTRUMENT APPROACH CHART

RJNW / NOTO

RNP Y RWY07(AR)

Coding Table

Serial Number	Path Descriptor	Waypoint Identifier	Fly Over	Course °M(°T)	Magnetic Variation	Distance (NM)	Turn Direction	Altitude (FT)	Speed (KIAS)	VPA/RDH (°/FT)	RNP Value
001	IF	NOPPY	-	-	-8.3	-	-	+4200	-	-	-
002	TF	BENKO	-	272 (264.0)	-8.3	4.2	-	+4200	-	-	1.0
003	TF	KONOS	-	272 (264.0)	-8.3	7.6	-	4200	-	-	1.0
004	TF	NW760	-	272 (263.9)	-8.3	2.0	-	3555	-165	-3.00	0.3
005	RF Center: NWRF2 r=2.10NM	NW761	-	-	-8.3	7.2	L	1257	-	-3.00	0.3
006	TF	RW07	Y	075 (066.6)	-8.3	1.6	-	760	-	-3.00/50	0.3
007	TF	NOPPY	-	075 (066.7)	-8.3	12.3	-	3000	-	-	1.0

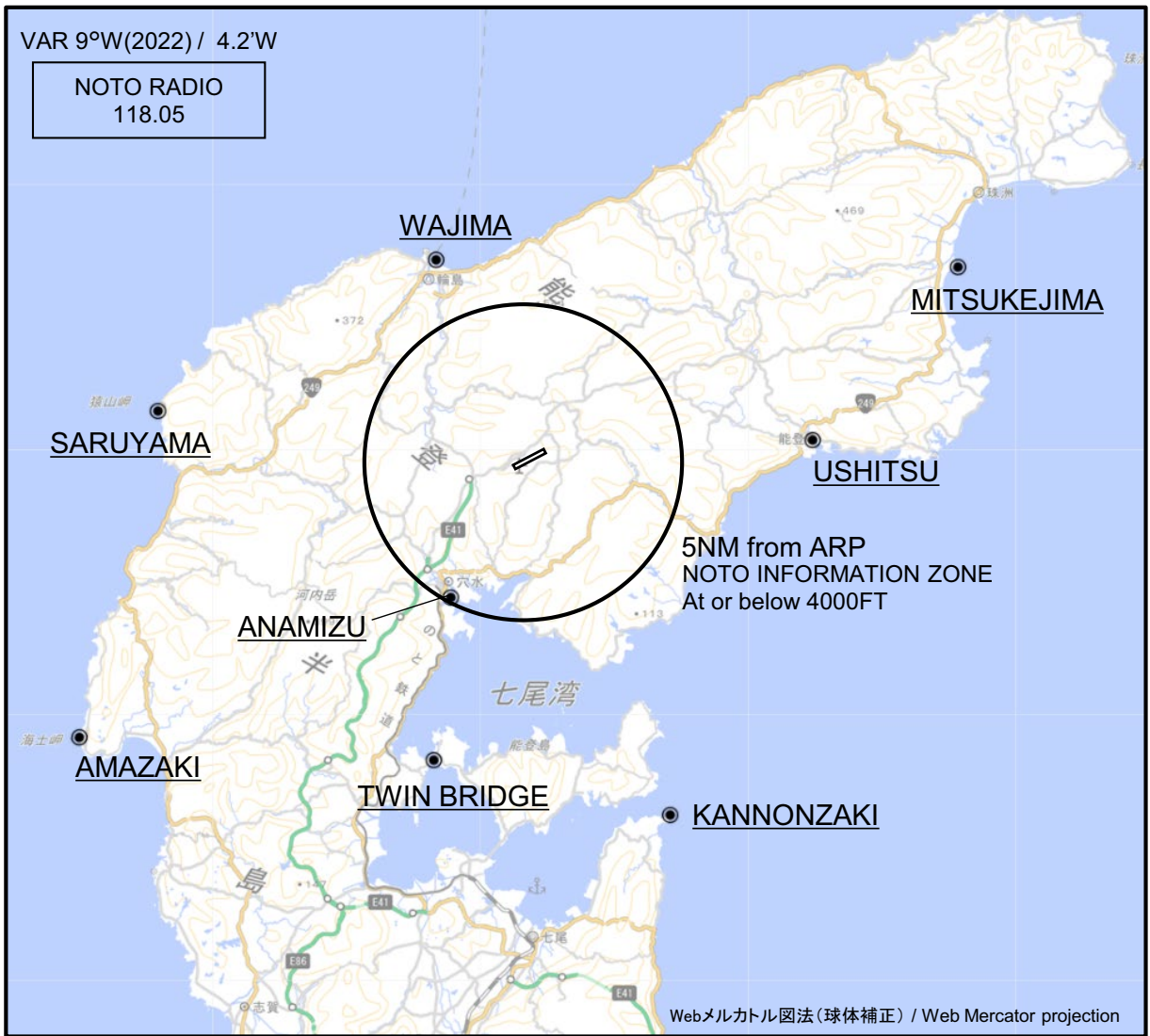
Waypoint Coordinates

Waypoint Identifier	Coordinates	RF Arc Center Identifier	Coordinates
NOPPY	372214.69N / 1371120.01E	NWRF2	371841.62N / 1365416.12E
BENKO	372148.26N / 1370603.41E		
KONOS	372059.84N / 1365630.70E		
NW760	372046.91N / 1365359.30E		
NW761	371645.85N / 1365518.43E		
RW07	371722.92N / 1365706.38E		
NOPPY	372214.69N / 1371120.01E		

CHANGE : PROC renamed.

RJNW / NOTO

Visual REP



※図中に標高を示す数字がある場合、単位はメートル(m)である。The unit of measurement used to express elevation is meter(m).

CHANGE : VAR.

Call sign	BRG / DIST from ARP	Remarks
見附島 Mitsukejima	066°T / 14.9NM	島 Island
宇出津 Ushitsu	085°T / 9.1NM	港 Harbor
観音崎 Kannonzaki	158°T / 12.0NM	岬 Cape
ツインブリッジ TwinBridge	197°T / 9.8NM	橋 Bridge
穴水 Anamizu	210°T / 4.6NM	港 Harbor
海士崎 Amazaki	238°T / 16.5NM	岬 Cape
猿山 Saruyama	278°T / 11.7NM	岬 Cape
輪島 Wajima	335°T / 7.0NM	港 Harbor

RJNW / NOTO

Minimum Vectoring Altitude CHART

