

STANDARD DEPARTURE CHART -INSTRUMENT

RJNY / SHIZUHAMA

SID

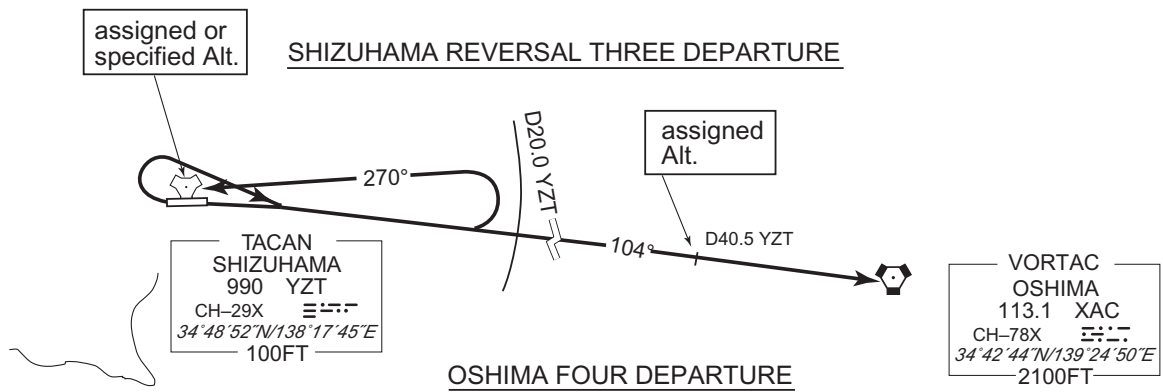
CHANGE : PROC renamed. PROC course. Minimum rate of climb. Radial/DME of ALT restriction(OSHIMA FOUR DEPARTURE).

OSHIMA FOUR DEPARTURE

RWY09 : Turn right,...
 RWY27 : Climb RWY HDG until 2.0NM from RWY end (2.3DME from YZT), turn right,...
 ...climb via YZT R104 to XAC VORTAC.
 Cross YZT R104/40.5DME at assigned altitude.
 Note RWY27 : Minimum rate of climb 300FT/NM until passing 1700FT.

SHIZUHAMA REVERSAL THREE DEPARTURE

RWY09 : Turn right,...
 RWY27 : Climb RWY HDG until 2.0NM from RWY end (2.3DME from YZT), turn right,...
 ...climb via YZT R104, then turn left within YZT 20.0DME to intercept and proceed via YZT R090 to YZT TACAN.
 Cross YZT TACAN at assigned or specified altitude.
 Note RWY27 : Minimum rate of climb 300FT/NM until passing 1700FT.



STANDARD DEPARTURE CHART -INSTRUMENT

RJNY / SHIZUHAMA

SID

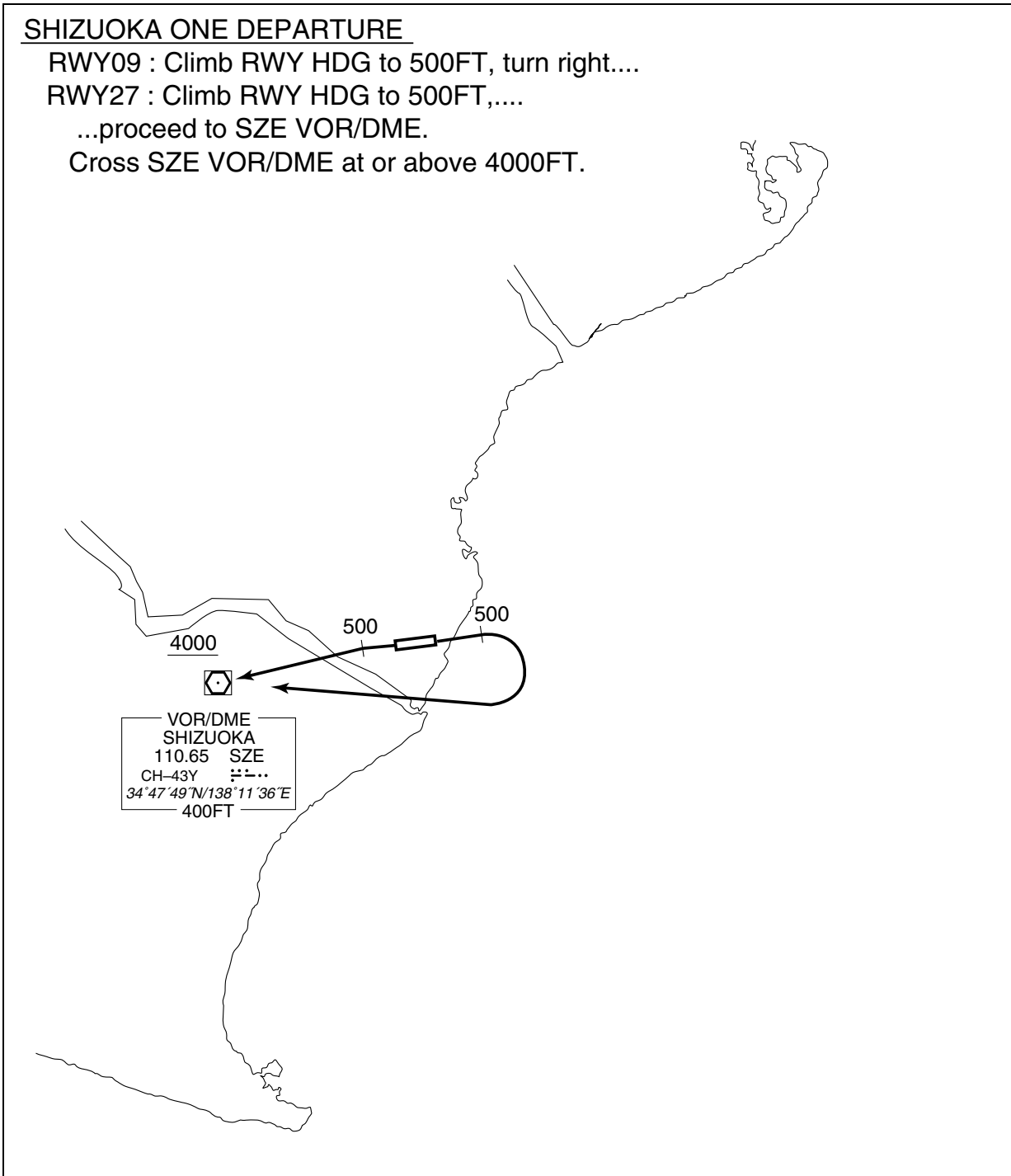
SHIZUOKA ONE DEPARTURE

RWY09 : Climb RWY HDG to 500FT, turn right....

RWY27 : Climb RWY HDG to 500FT,....

...proceed to SZE VOR/DME.

Cross SZE VOR/DME at or above 4000FT.



STANDARD ARRIVAL CHART-INSTRUMENT

RJNY / SHIZUHAMA

STAR

KUNOH ARRIVAL

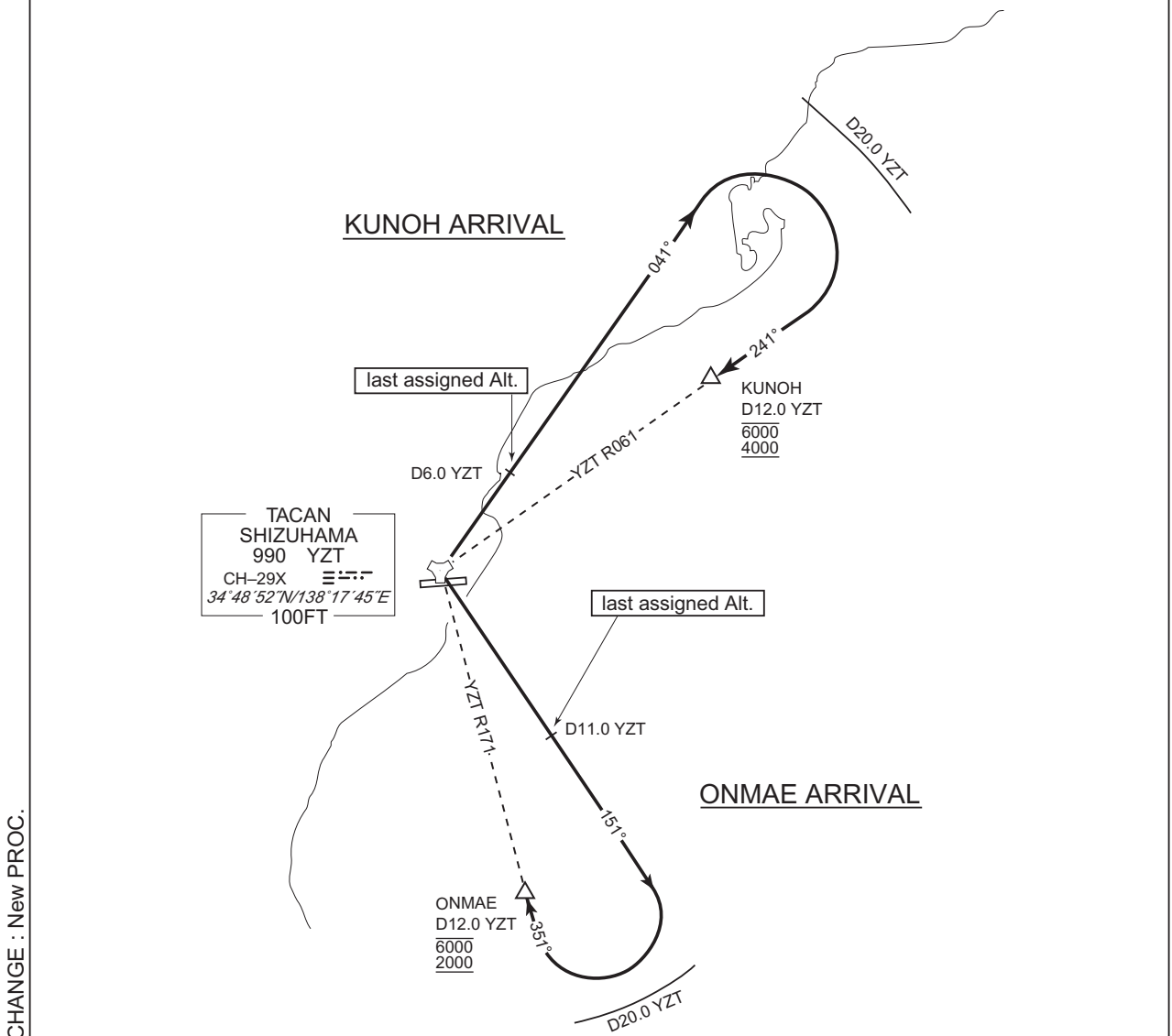
From over YZT TACAN, proceed via YZT R041, then turn right within YZT 20.0DME to intercept and proceed via YZT R061 to KUNOH.

Maintain last assigned altitude until YZT R041/6.0DME.
Cross KUNOH between 4000FT and 6000FT.

ONMAE ARRIVAL

From over YZT TACAN, proceed via YZT R151, then turn right within YZT 20.0DME to intercept and proceed via YZT R171 to ONMAE.

Maintain last assigned altitude until YZT R151/11.0DME.
Cross ONMAE between 2000FT and 6000FT.



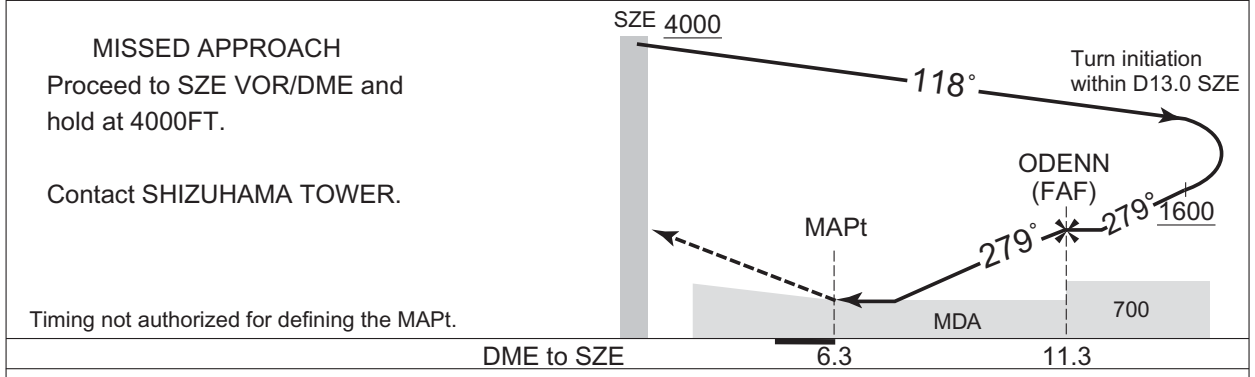
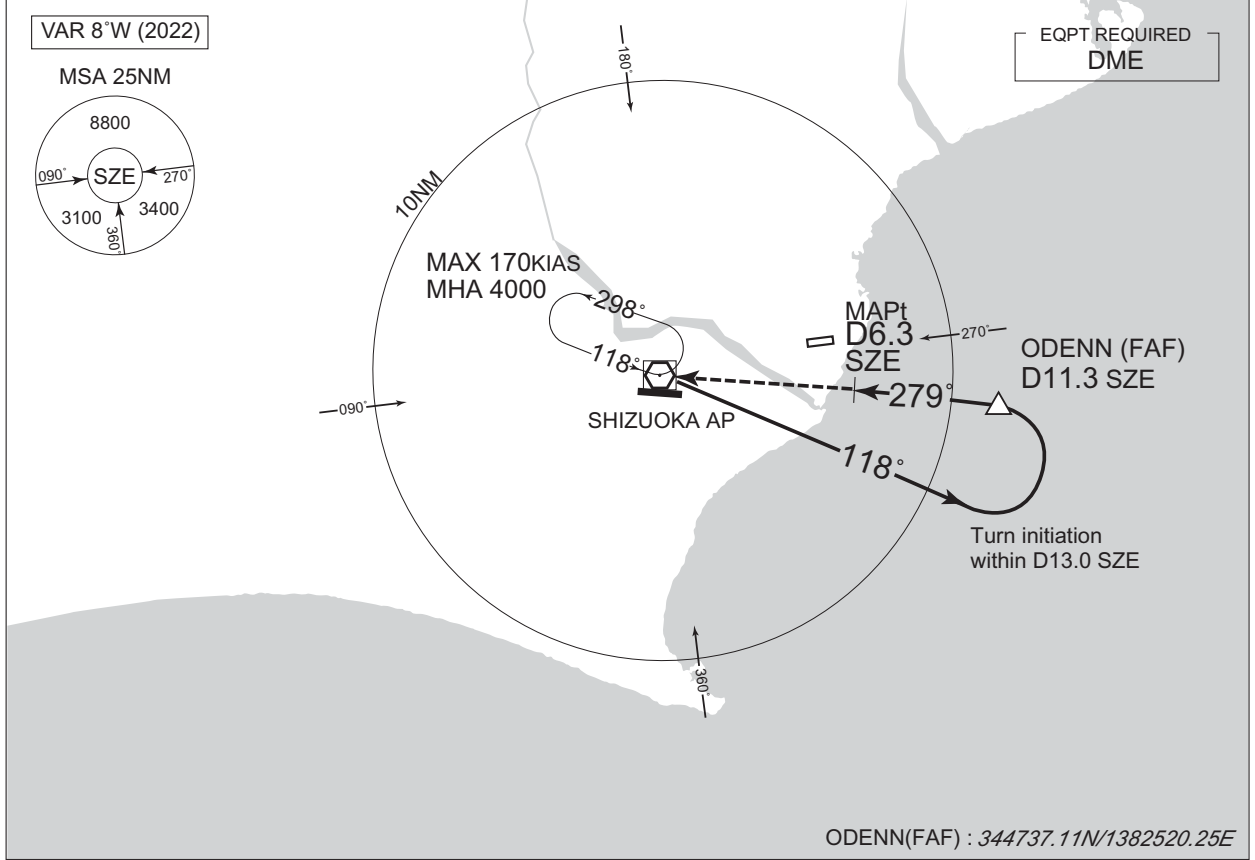
CHANGE : New PROC.

INSTRUMENT APPROACH CHART

RJNY / SHIZUHAMA

VOR A

TOKYO CONTROL 123.7 - 134.15 315.9 - 227.3	SHIZUOKA VOR/DME 110.65 SZE CH-43Y 34°47'49"N / 138°11'36"E	SHIZUHAMA TOWER 120.1 - 126.2 - 138.3 141.25 - 236.8	NO RADAR
--	--	--	----------



CHANGE : VAR. PROC course. HLDG course.

MISSED APPROACH
Proceed to SZE VOR/DME and hold at 4000FT.
Contact SHIZUHAMA TOWER.

Timing not authorized for defining the MAPt.

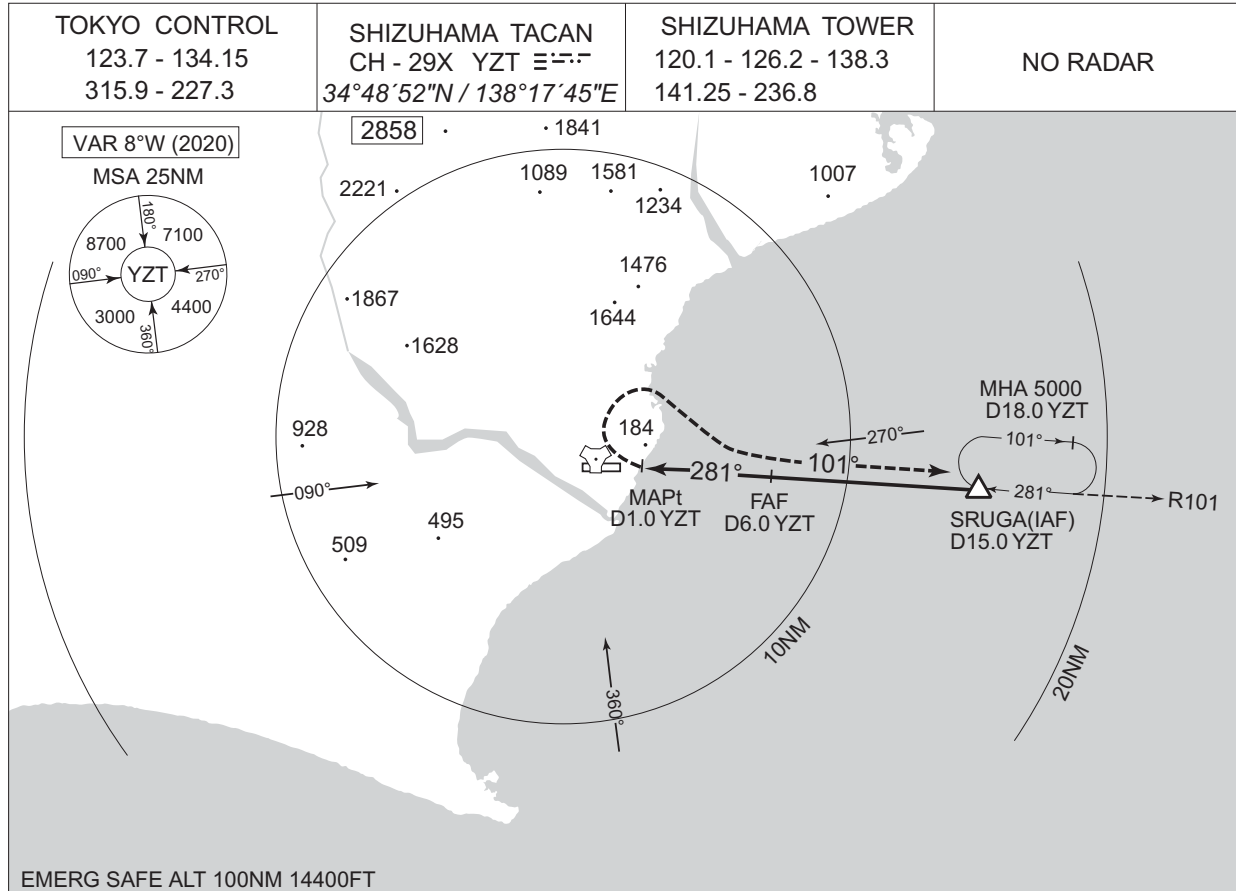
Missed APCH climb gradient MNM 5.0%

MINIMA		AD elev. 23
CAT	CIRCLING	
	MDA(H)	VIS
A	500 (477)	1600
B		2400
C		
D	-	-

INSTRUMENT APPROACH CHART

RJNY / SHIZUHAMA

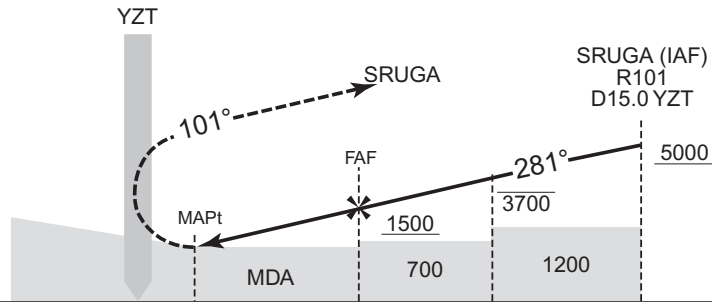
TACAN Z RWY27



EMERG SAFE ALT 100NM 14400FT

DME to YZT	1	2	3	4	5	FAF
ALT (3.0° APCH Path)	-	-	-	-	1494	1813

MISSED APPROACH
Turn right, climb to 5000FT via YZT R101 to SRUGA and hold.
Contact SHIZUHAMA TOWER.



DME to YZT	1.0	6.0	10.0
NM to RWY27	0.5	5.5	9.5

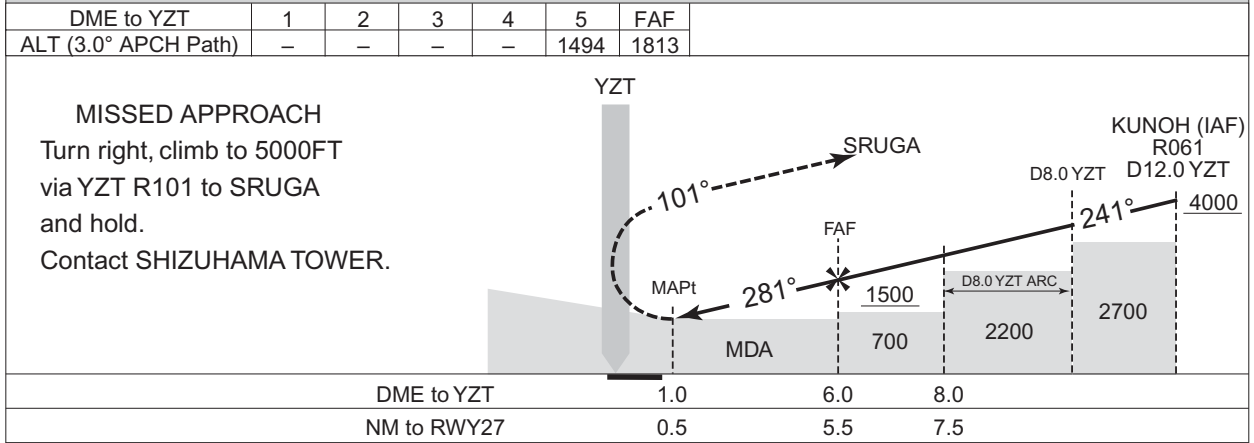
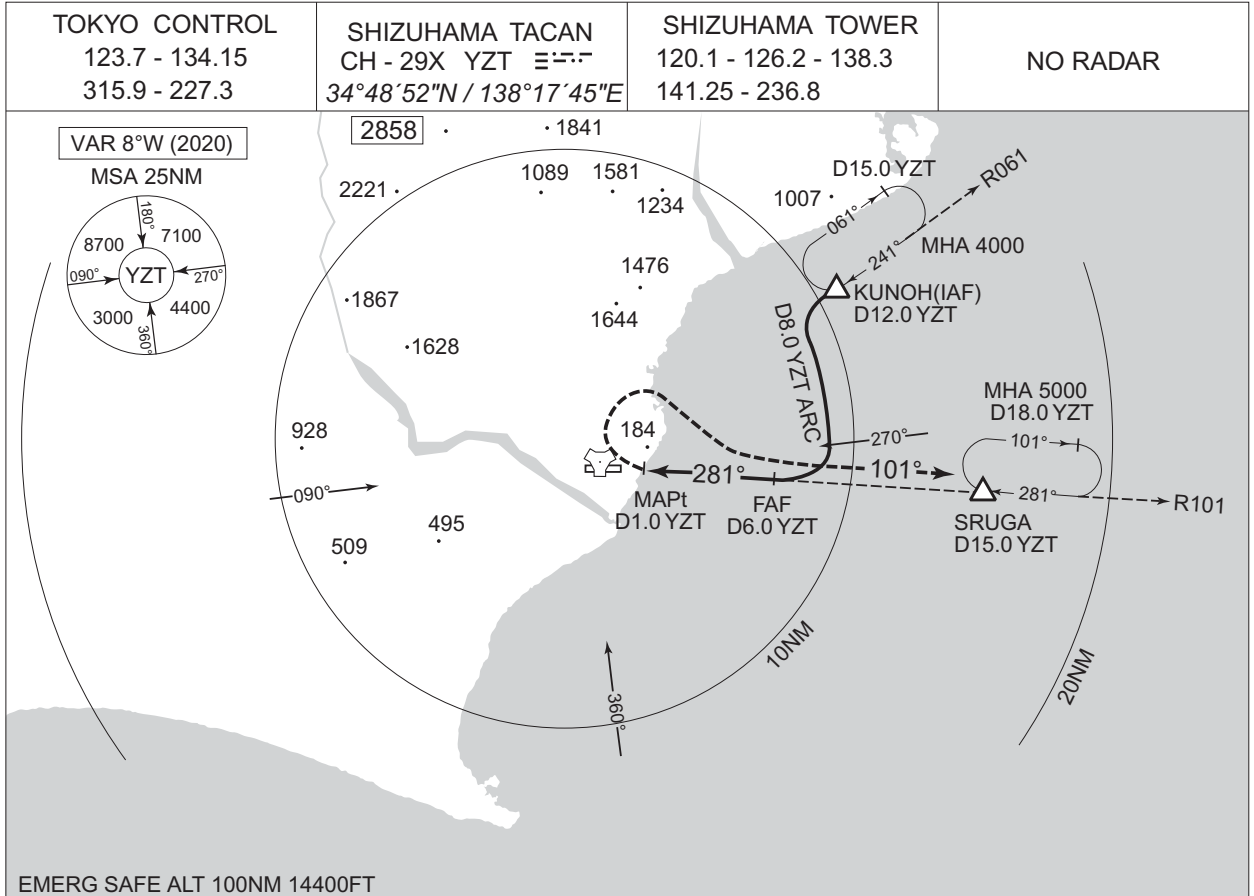
CHANGE : ALT(3.0° APCH Path).

CAT	MINIMA		THR elev. 17	AD elev. 23
	MDA(H)	RVR/CMV	CIRCLING	
			MDA(H)	VIS
A	440 (417)	1500	500 (477)	1600
B				2400
C	1220 (1197)	2000	1220 (1197)	3200
D				

INSTRUMENT APPROACH CHART

RJNY / SHIZUHAMA

TACAN Y RWY27



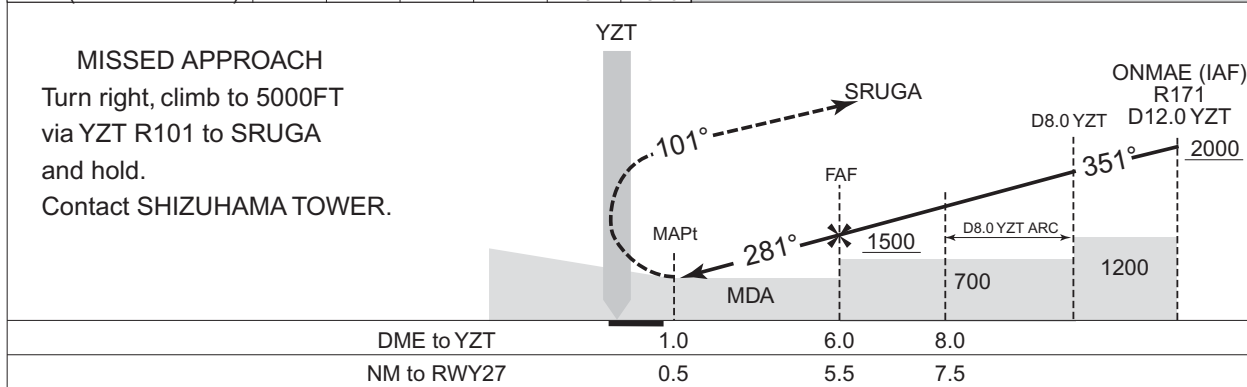
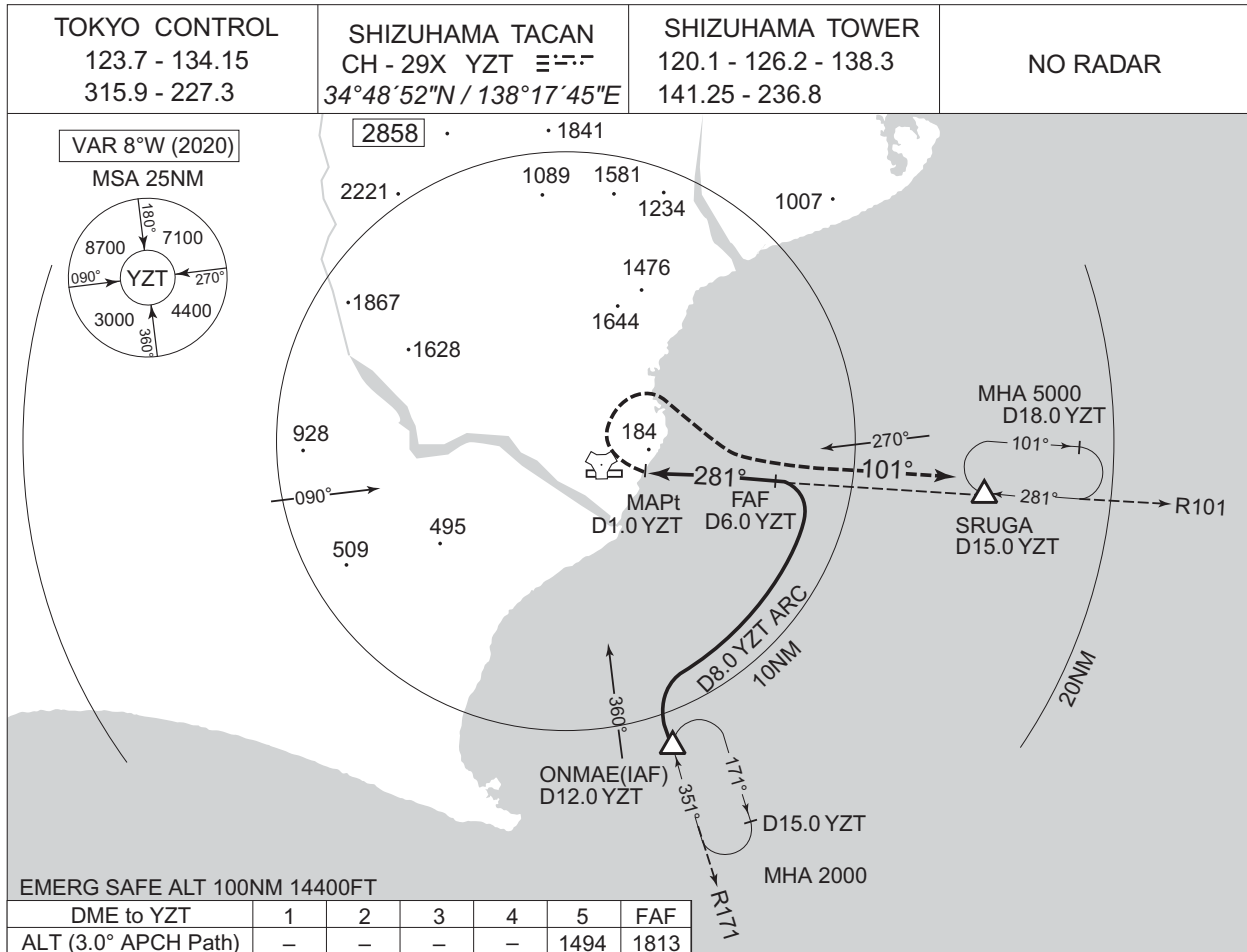
CHANGE : ALT(3.0° APCH Path).

MINIMA		THR elev. 17	AD elev. 23	
CAT			CIRCLING	
	MDA(H)	RVR/CMV	MDA(H)	VIS
A	440 (417)	1500	500 (477)	1600
B		1800		2400
C	1220 (1197)	2000	1220 (1197)	3200
D				

INSTRUMENT APPROACH CHART

RJNY / SHIZUHAMA

TACAN X RWY27



CHANGE : ALT(3.0° APCH Path).

MINIMA		THR elev. 17	AD elev. 23	
CAT	MDA(H)	RVR/ CMV	CIRCLING	
			MDA(H)	VIS
A	440 (417)	1500	500 (477)	1600
B				2400
C				2400
D	1220 (1197)	2000	1220 (1197)	3200