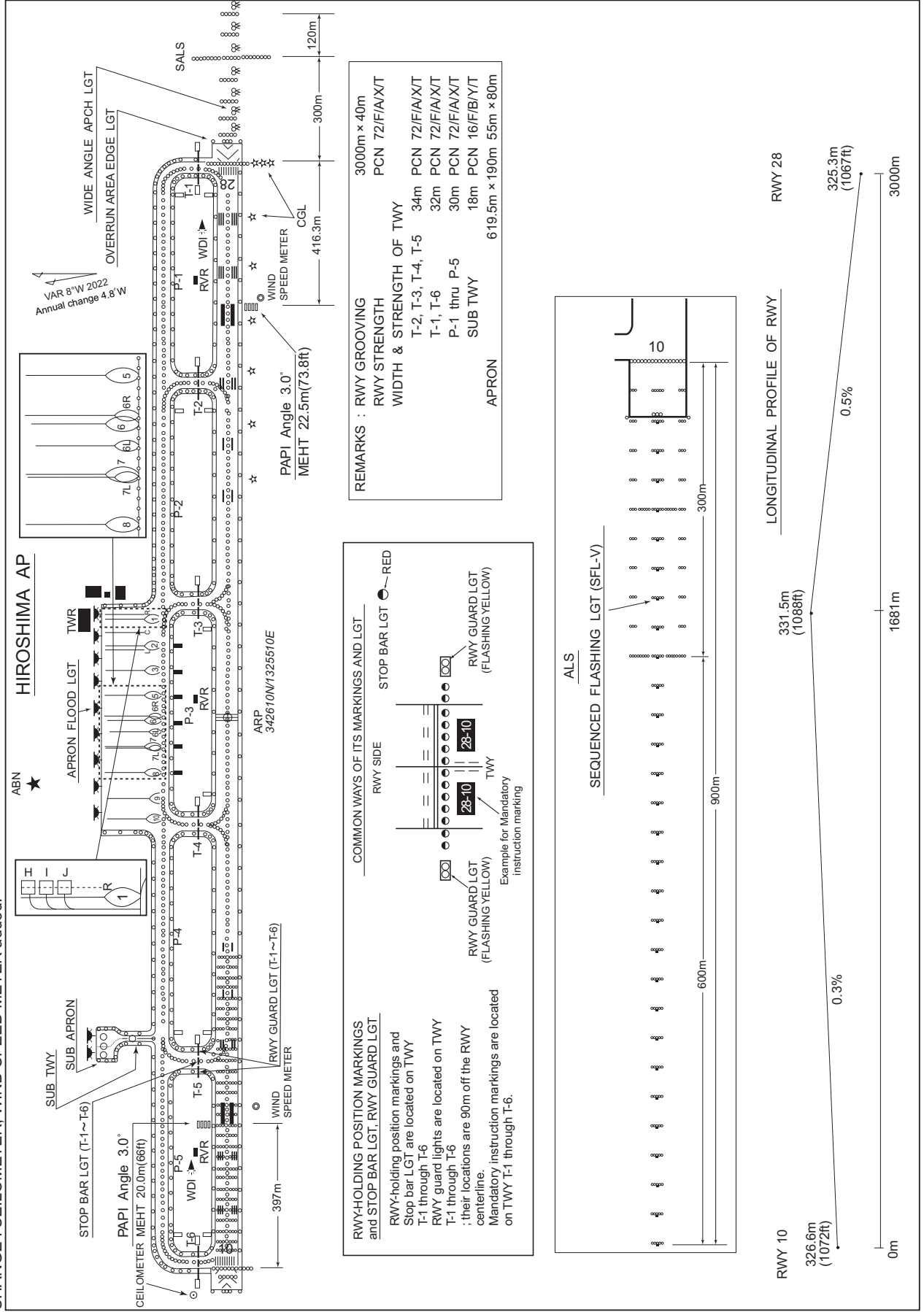


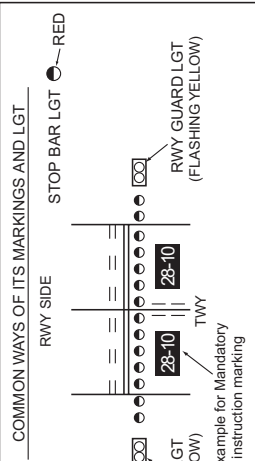
RJOA / HIROSHIMA

AD CHART

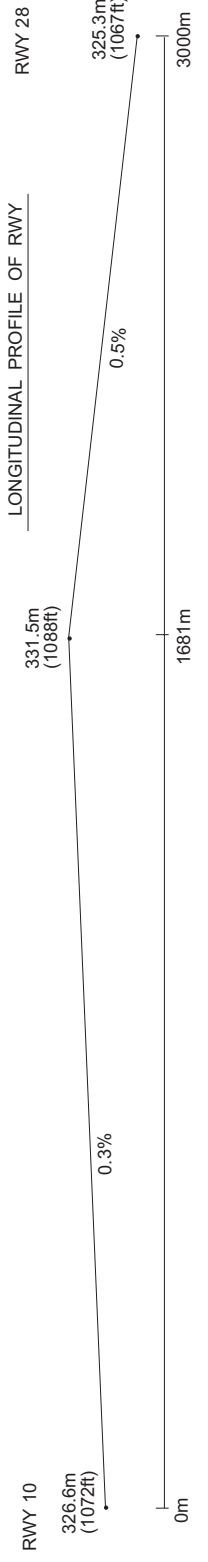
CHANGE : CEILOMETER, WIND SPEED METER added.



REMARKS : RWY GROOVING 3000m x 40m
 PCN 72/F/A/X/T
 RWY STRENGTH
 WIDTH & STRENGTH OF TWY
 T-2, T-3, T-4, T-5 34m PCN 72/F/A/X/T
 T-1, T-6 32m PCN 72/F/A/X/T
 P-1 thru P-5 30m PCN 72/F/A/X/T
 SUB TWY 18m PCN 16/F/B/Y/T
 APRON 619.5m x 190m 55m x 80m



RWY-HOLDING POSITION MARKINGS and STOP BAR LGT, RWY GUARD LGT
 RWY-holding position markings and Stop bar LGT are located on TWY T-1 through T-6
 RWY guard lights are located on TWY T-1 through T-6 ; their locations are 90m off the RWY centerline.
 Mandatory instruction markings are located on TWY T-1 through T-6.

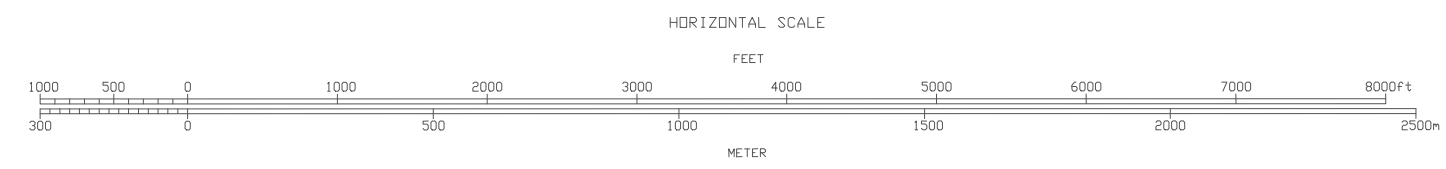
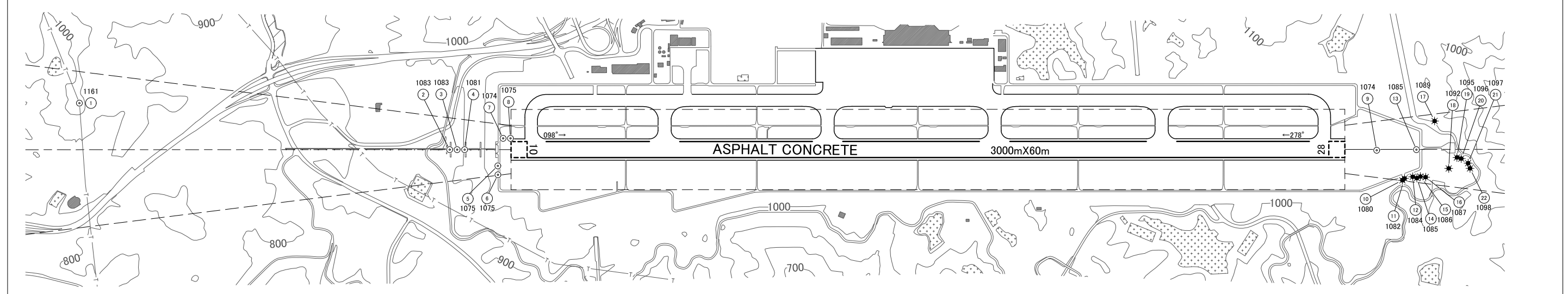
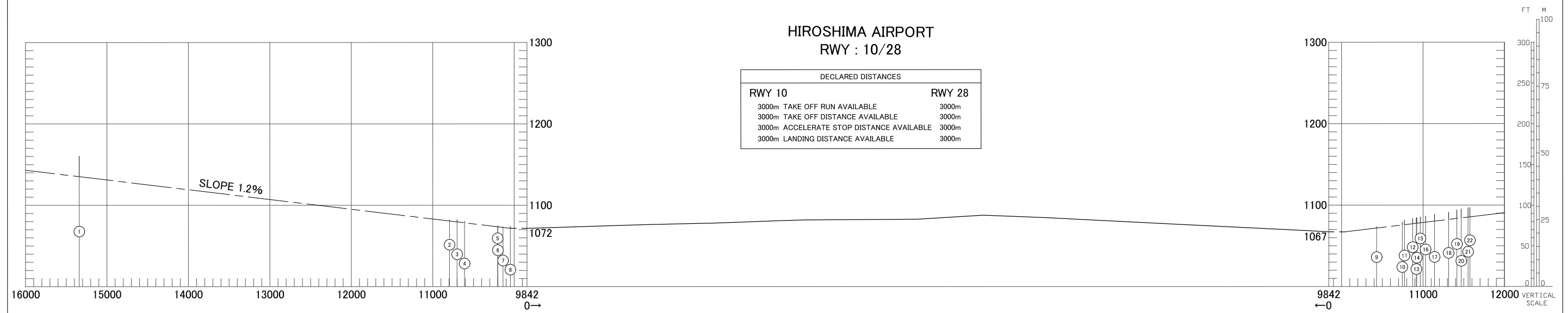


INTENTIONALLY LEFT BLANK

AERODROME OBSTACLE CHART-ICAO
TYPE A (OPERATING LIMITATIONS)

DIMENSIONS AND ELEVATIONS IN FEET BEARINGS ARE MAGNETIC

MAGNETIC VARIATION 8° W-JUN 2022



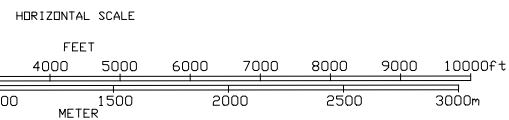
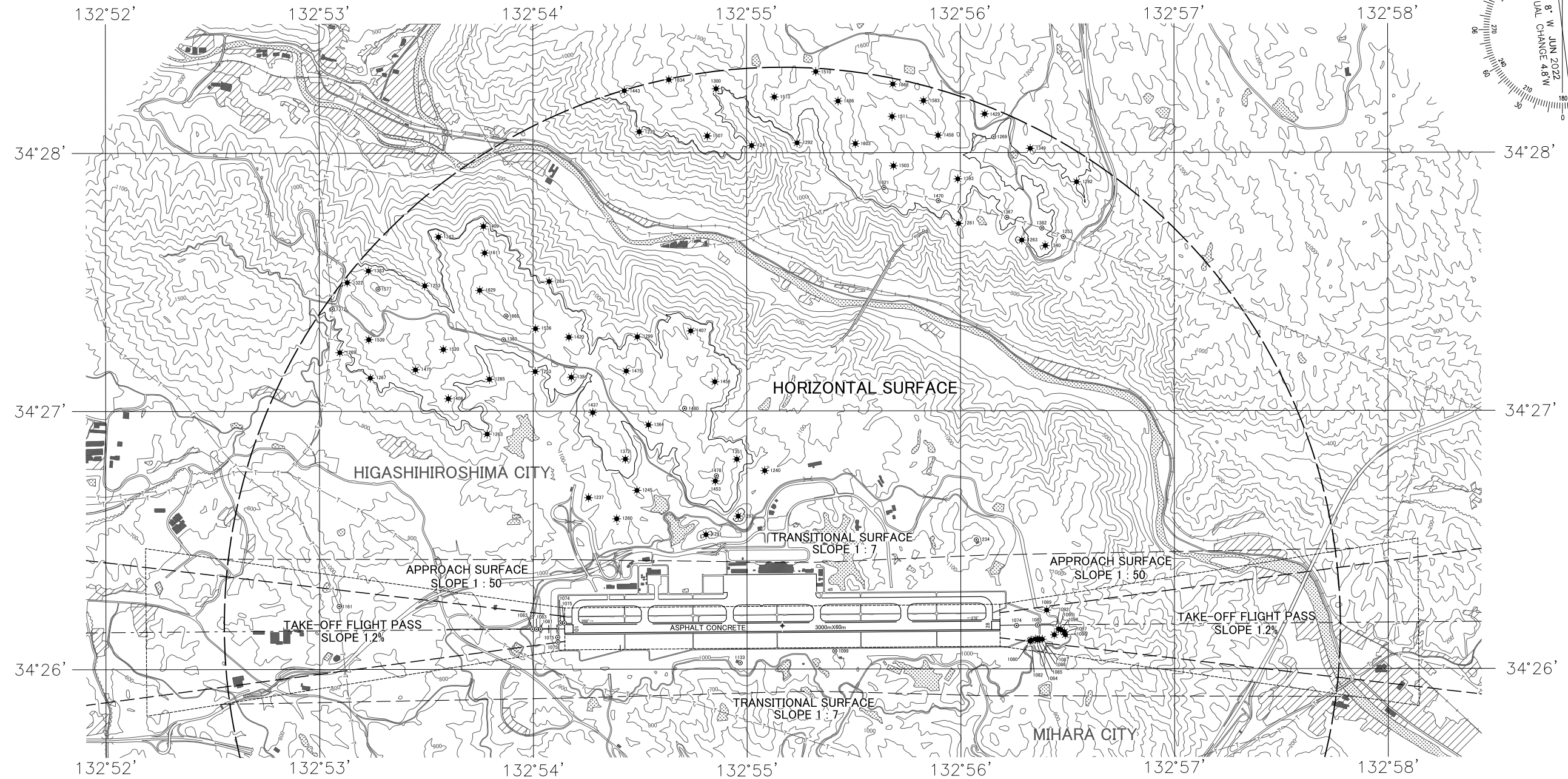
LEGEND		AMENDMENT RECORD		
①	IDENTIFICATION NUMBER	Nr	DATE	ENTERED BY
⊙	POLE, TOWER, SPIRE, ANTENNA, ETC			
*	OBSTRUCTION LIGHT			
■	BUILDING OR LARGE STRUCTURE			
—+—+—	RAILROAD			
—T—T—	TRANSMISSION LINE OR OVERHEAD CABLE			
	LEVEE			
▲	TREE			
⊙	LAKE			
—	CONTOURS(ft)			
—	RIVER			
▲	TRIANGULATION POINT			

CHANGE : VAR.

AERODROME OBSTACLE CHART-ICAO
TYPE B (OPERATING LIMITATIONS)

DIMENSIONS AND ELEVATIONS IN FEET BEARINGS ARE MAGNETIC

AERODROME ELEVATION 1086ft ARP

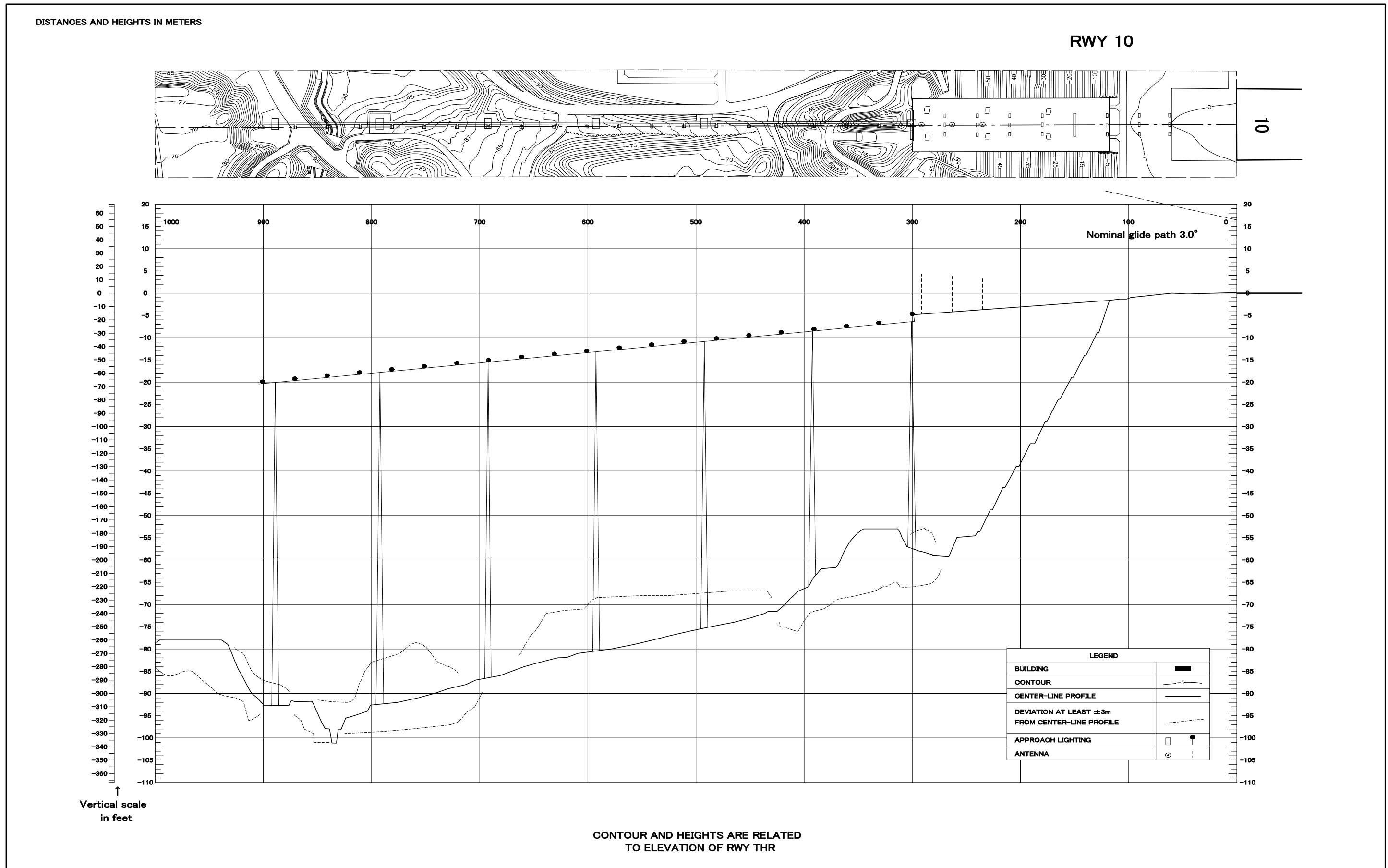


LEGEND		AMENDMENT RECORD		
		NO	DATE	ENTERED BY
+	AERODROME REFERENCE POINT 34°26'10"N 132°55'10"E			
⊙	POLE, TOWER, SPIRE, ANTENNA, ETC			
★	AERONAUTICAL GROUND LIGHT			
✱	OBSTRUCTION LIGHT			
■	BUILDING OR LARGE STRUCTURE			
—+—	RAILROAD			
—T—	TRANSMISSION LINE OR OVERHEAD CABLE			
—	LEVEE			
✪	TREE			
⊙	LAKE			
—	RIVER			
—	CONTOURS(11)			
○	TERRAIN PENETRATING OBSTACLE PLANE			

CHANGE : VAR.

PRECISION APPROACH TERRAIN CHART-ICAO

PRECISION APPROACH TERRAIN CHART



STANDARD DEPARTURE CHART - INSTRUMENT

RJOA / HIROSHIMA

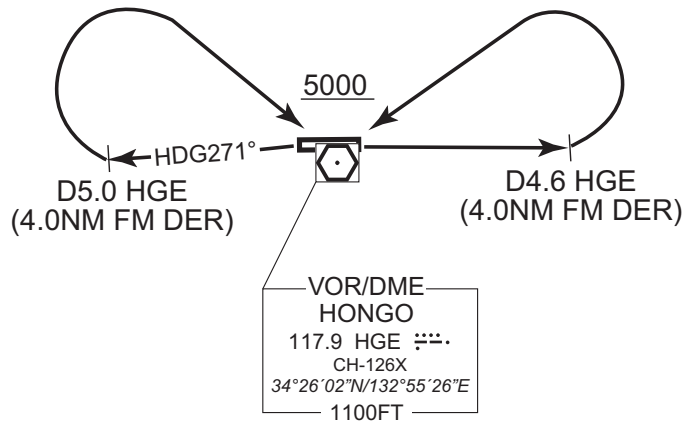
SID

HONGO REVERSAL FOUR DEPARTURE

RWY 10 : Climb RWY HDG to HGE 4.6DME(4.0NM FM DER), turn left....,
RWY 28 : Climb on HDG 271° to HGE 5.0DME(4.0NM FM DER), turn right....,
....direct to HGE VOR/DME. Cross HGE VOR/DME at or above 5000FT.

Note : RWY10 : 3.8% climb gradient required up to 2300FT.
OBST ALT 2002FT located at 088°/5.7NM FM DER.
RWY28 : 3.8% climb gradient required up to 1600FT.
OBST ALT 2559FT located at 338°/7.7NM FM DER.

CHANGE : PROC renamed. PROC course. Note RWY10(OBST). Note RWY28(Climb gradient, OBST).



STANDARD DEPARTURE CHART - INSTRUMENT

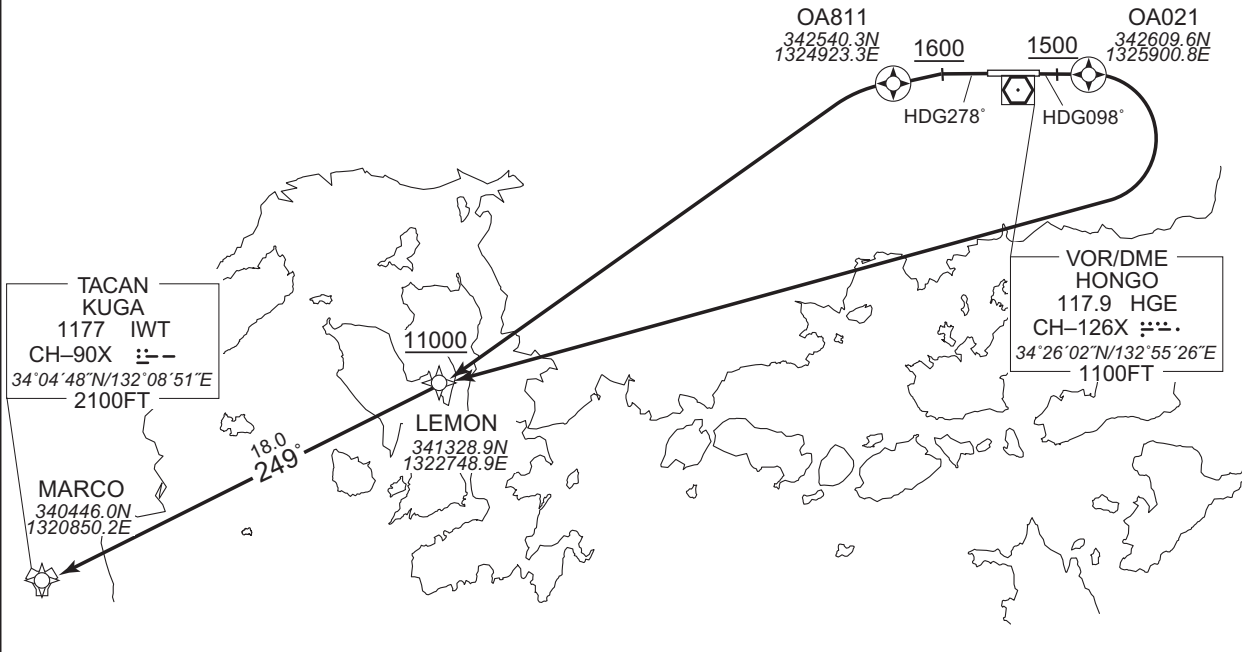
RJOA / HIROSHIMA

RNAV SID

MARCO TWO DEPARTURE RNP1

Note GNSS required.

VAR 8°W



RWY10 : Climb on HDG098° at or above 1500FT, direct to OA021, turn right direct to LEMON at or above 11000FT, to MARCO.

RWY28 : Climb on HDG278° at or above 1600FT, direct to OA811, turn left direct to LEMON at or above 11000FT, to MARCO.

NOTE RWY10 : 5.0% climb gradient required up to 1500FT.
RWY28 : 3.6% climb gradient required up to 1600FT.

RWY10

Serial Number	Path Descriptor	Waypoint Identifier	Fly Over	Course °M(T)	Magnetic Variation	Distance (NM)	Turn Direction	Altitude (FT)	Speed (KIAS)	Vertical Angle	Navigation Specification
001	VA	-	-	098 (090.0)	-8.1	-	-	+1500	-	-	RNP1
002	DF	OA021	Y	-	-8.1	-	-	-	-	-	RNP1
003	DF	LEMON	-	-	-8.1	-	R	+11000	-	-	RNP1
004	TF	MARCO	-	249 (241.1)	-8.1	18.0	-	-	-	-	RNP1

RWY28

Serial Number	Path Descriptor	Waypoint Identifier	Fly Over	Course °M(T)	Magnetic Variation	Distance (NM)	Turn Direction	Altitude (FT)	Speed (KIAS)	Vertical Angle	Navigation Specification
001	VA	-	-	278 (270.0)	-8.1	-	-	+1600	-	-	RNP1
002	DF	OA811	Y	-	-8.1	-	-	-	-	-	RNP1
003	DF	LEMON	-	-	-8.1	-	L	+11000	-	-	RNP1
004	TF	MARCO	-	249 (241.1)	-8.1	18.0	-	-	-	-	RNP1

CHANGE : Navigation Specification(Basic RNP1 → RNP1).

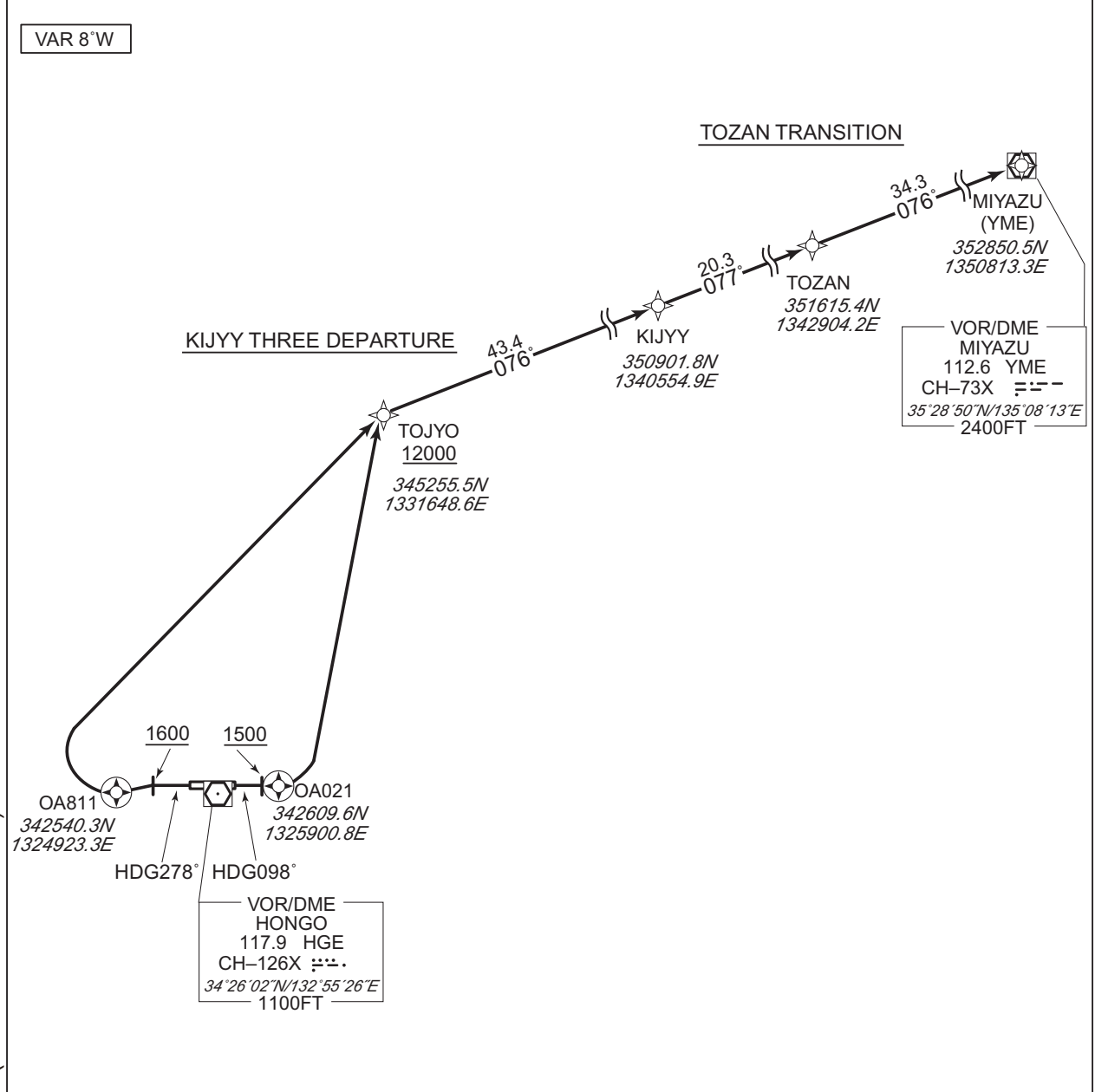
STANDARD DEPARTURE CHART - INSTRUMENT

RJOA / HIROSHIMA

RNAV SID and TRANSITION

KIJYY THREE DEPARTURE	RNP1
-----------------------	------

Note GNSS required.



CHANGE : Navigation Specification(Basic RNP1 → RNP1).

KIJYY THREE DEPARTURE

RWY10 : Climb on HDG098° at or above 1500FT, direct to OA021, turn left direct to TOJYO at or above 12000FT, to KIJYY.

RWY28 : Climb on HDG278° at or above 1600FT, direct to OA811, turn right direct to TOJYO at or above 12000FT, to KIJYY.

NOTE RWY10 : 5.0% climb gradient required up to 1600FT.
OBST ALT 2090FT located at 5.74NM 087° FM end of RWY10.

RWY28 : 3.6% climb gradient required up to 2700FT.
OBST ALT 2570FT located at 7.71NM 337° FM end of RWY28.

TOZAN TRANSITION

From KIJYY, to TOZAN, to YME.

STANDARD DEPARTURE CHART - INSTRUMENT

RJOA / HIROSHIMA

RNAV SID and TRANSITION

KIJYY THREE DEPARTURE

RWY10

Serial Number	Path Descriptor	Waypoint Identifier	Fly Over	Course °M(°T)	Magnetic Variation	Distance (NM)	Turn Direction	Altitude (FT)	Speed (KIAS)	Vertical Angle	Navigation Specification
001	VA	-	-	098 (090.0)	-8.1	-	-	+1500	-	-	RNP1
002	DF	OA021	Y	-	-8.1	-	-	-	-	-	RNP1
003	DF	TOJYO	-	-	-8.1	-	L	+12000	-	-	RNP1
004	TF	KIJYY	-	076 (067.9)	-8.1	43.4	-	-	-	-	RNP1

RWY28

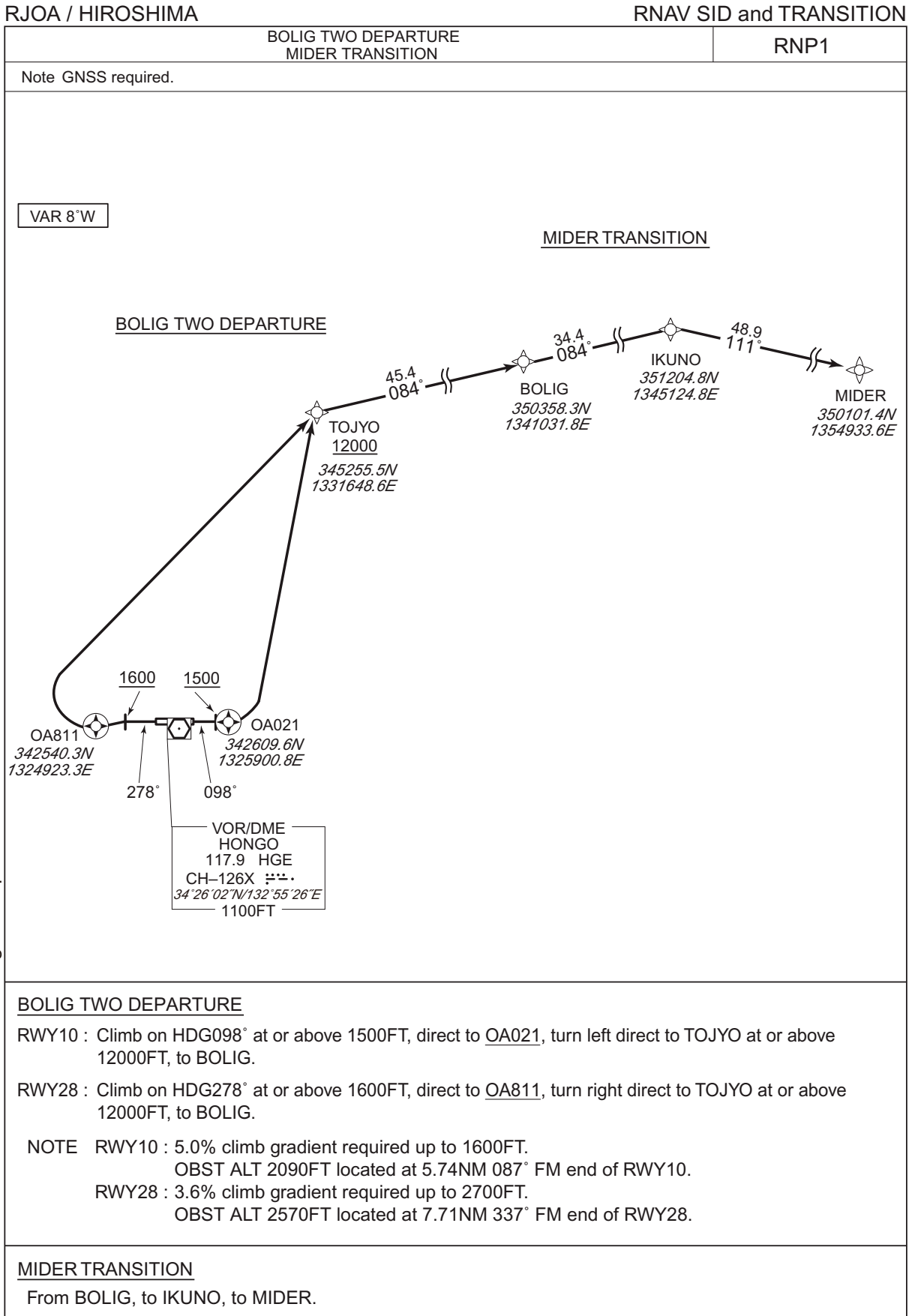
Serial Number	Path Descriptor	Waypoint Identifier	Fly Over	Course °M(°T)	Magnetic Variation	Distance (NM)	Turn Direction	Altitude (FT)	Speed (KIAS)	Vertical Angle	Navigation Specification
001	VA	-	-	278 (270.0)	-8.1	-	-	+1600	-	-	RNP1
002	DF	OA811	Y	-	-8.1	-	-	-	-	-	RNP1
003	DF	TOJYO	-	-	-8.1	-	R	+12000	-	-	RNP1
004	TF	KIJYY	-	076 (067.9)	-8.1	43.4	-	-	-	-	RNP1

TOZAN TRANSITION

Serial Number	Path Descriptor	Waypoint Identifier	Fly Over	Course °M(°T)	Magnetic Variation	Distance (NM)	Turn Direction	Altitude (FT)	Speed (KIAS)	Vertical Angle	Navigation Specification
001	IF	KIJYY	-	-	-8.1	-	-	-	-	-	RNP1
002	TF	TOZAN	-	077 (069.0)	-8.1	20.3	-	-	-	-	RNP1
003	TF	YME	-	076 (068.3)	-8.1	34.3	-	-	-	-	RNP1

CHANGE : Navigation Specification(Basic RNP1 → RNP1).

STANDARD DEPARTURE CHART - INSTRUMENT



CHANGE : PROC renamed. Note. Navigation Specification.

STANDARD DEPARTURE CHART - INSTRUMENT

RJOA / HIROSHIMA

RNAV SID and TRANSITION

BOLIG TWO DEPARTURE

RWY10

Serial Number	Path Descriptor	Waypoint Identifier	Fly Over	Course °M(°T)	Magnetic Variation	Distance (NM)	Turn Direction	Altitude (FT)	Speed (KIAS)	Vertical Angle	Navigation Specification
001	VA	–	–	098 (090.0)	-8.2	–	–	+1500	–	–	RNP1
002	DF	OA021	Y	–	-8.2	–	–	–	–	–	RNP1
003	DF	TOJYO	–	–	-8.2	–	L	+12000	–	–	RNP1
004	TF	BOLIG	–	084 (075.7)	-8.2	45.4	–	–	–	–	RNP1

RWY28

Serial Number	Path Descriptor	Waypoint Identifier	Fly Over	Course °M(°T)	Magnetic Variation	Distance (NM)	Turn Direction	Altitude (FT)	Speed (KIAS)	Vertical Angle	Navigation Specification
001	VA	–	–	278 (270.0)	-8.2	–	–	+1600	–	–	RNP1
002	DF	OA811	Y	–	-8.2	–	–	–	–	–	RNP1
003	DF	TOJYO	–	–	-8.2	–	R	+12000	–	–	RNP1
004	TF	BOLIG	–	084 (075.7)	-8.2	45.4	–	–	–	–	RNP1

MIDER TRANSITION

Serial Number	Path Descriptor	Waypoint Identifier	Fly Over	Course °M(°T)	Magnetic Variation	Distance (NM)	Turn Direction	Altitude (FT)	Speed (KIAS)	Vertical Angle	Navigation Specification
001	IF	BOLIG	–	–	-8.2	–	–	–	–	–	RNP1
002	TF	IKUNO	–	084 (076.2)	-8.2	34.4	–	–	–	–	RNP1
003	TF	MIDER	–	111 (102.8)	-8.2	48.9	–	–	–	–	RNP1

CHANGE : PROC renamed. Navigation Specification.

STANDARD DEPARTURE CHART -INSTRUMENT

RJOA / HIROSHIMA

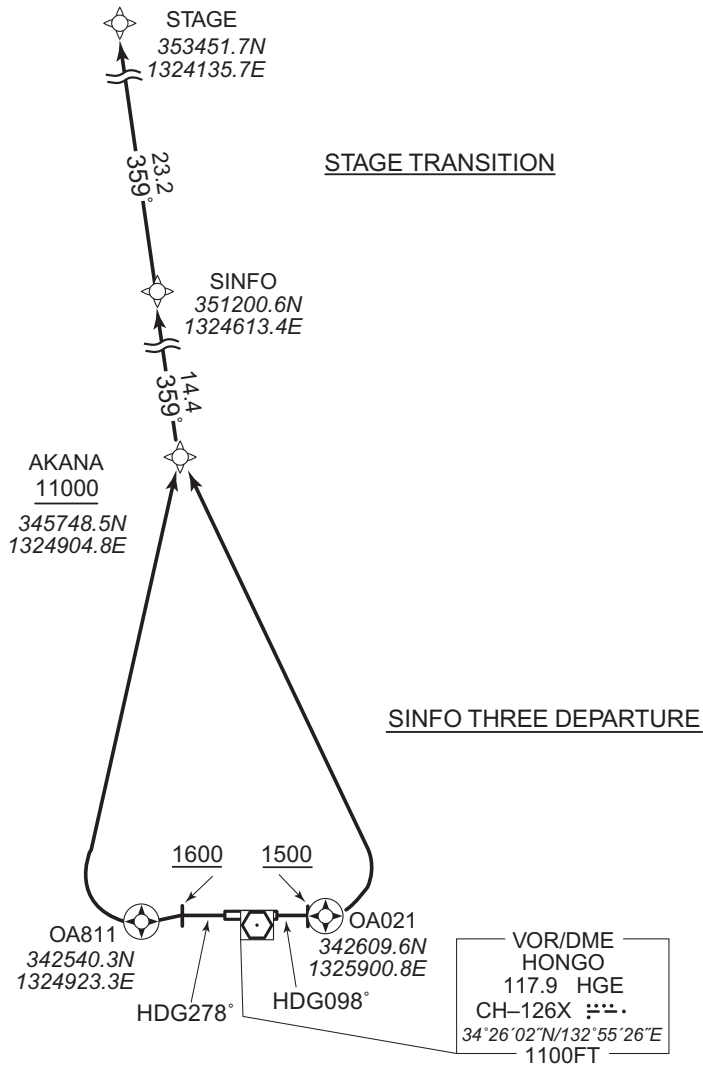
RNAV SID and TRANSITION

SINFO THREE DEPARTURE

RNP1

Note GNSS required.

VAR 8°W



CHANGE : Navigation Specification(Basic RNP1 → RNP1).

SINFO THREE DEPARTURE

RWY10 : Climb on HDG098° at or above 1500FT, direct to OA021, turn left direct to AKANA at or above 11000FT, to SINFO.

RWY28 : Climb on HDG278° at or above 1600FT, direct to OA811, turn right direct to AKANA at or above 11000FT, to SINFO.

NOTE RWY10 : 5.0% climb gradient required up to 1800FT.
 OBST ALT 1780FT located at 2.30NM 006° FM end of RWY10.
 RWY28 : 3.8% climb gradient required up to 3700FT.
 OBST ALT 3150FT located at 11.02NM 322° FM end of RWY28.

STAGE TRANSITION

From SINFO, to STAGE.

STANDARD DEPARTURE CHART -INSTRUMENT

RJOA / HIROSHIMA

RNAV SID and TRANSITION

SINFO THREE DEPARTURE

RWY10

Serial Number	Path Descriptor	Waypoint Identifier	Fly Over	Course °M(°T)	Magnetic Variation	Distance (NM)	Turn Direction	Altitude (FT)	Speed (KIAS)	Vertical Angle	Navigation Specification
001	VA	-	-	098 (090.0)	-8.1	-	-	+1500	-	-	RNP1
002	DF	OA021	Y	-	-8.1	-	-	-	-	-	RNP1
003	DF	AKANA	-	-	-8.1	-	L	+11000	-	-	RNP1
004	TF	SINFO	-	359 (350.7)	-8.1	14.4	-	-	-	-	RNP1

RWY28

Serial Number	Path Descriptor	Waypoint Identifier	Fly Over	Course °M(°T)	Magnetic Variation	Distance (NM)	Turn Direction	Altitude (FT)	Speed (KIAS)	Vertical Angle	Navigation Specification
001	VA	-	-	278 (270.0)	-8.1	-	-	+1600	-	-	RNP1
002	DF	OA811	Y	-	-8.1	-	-	-	-	-	RNP1
003	DF	AKANA	-	-	-8.1	-	R	+11000	-	-	RNP1
004	TF	SINFO	-	359 (350.7)	-8.1	14.4	-	-	-	-	RNP1

STAGE TRANSITION

Serial Number	Path Descriptor	Waypoint Identifier	Fly Over	Course °M(°T)	Magnetic Variation	Distance (NM)	Turn Direction	Altitude (FT)	Speed (KIAS)	Vertical Angle	Navigation Specification
001	IF	SINFO	-	-	-8.1	-	-	-	-	-	RNP1
002	TF	STAGE	-	359 (350.6)	-8.1	23.2	-	-	-	-	RNP1

CHANGE : Navigation Specification(Basic RNP1 → RNP1).

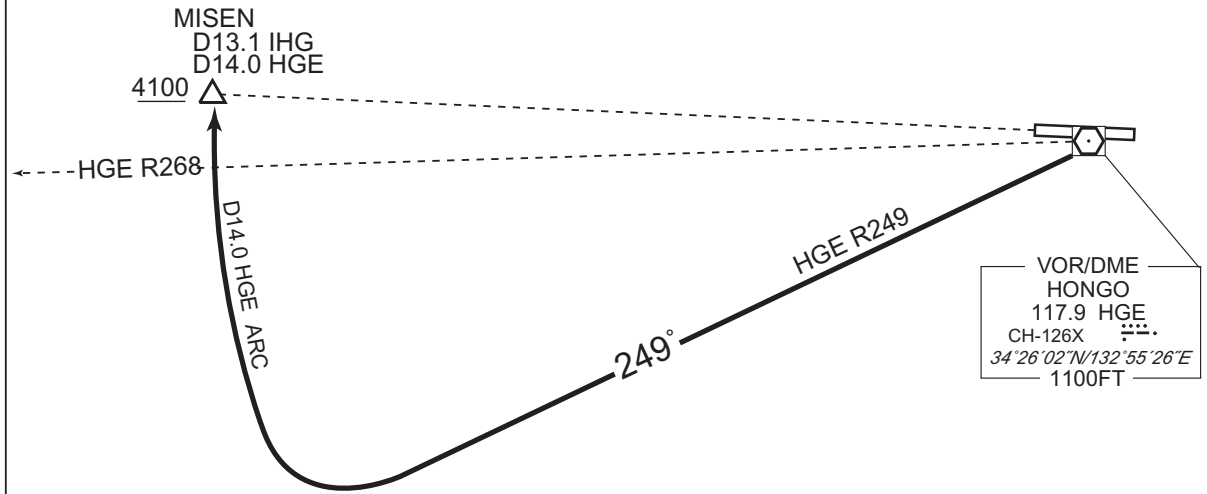
STANDARD ARRIVAL CHART -INSTRUMENT

RJOA / HIROSHIMA

STAR

HONGO ARRIVAL

From over HGE VOR/DME, via HGE R249 to intercept and proceed via HGE 14.0DME clockwise ARC to MISEN.
Cross MISEN at or above 4100FT.



CHANGE : Course FM HGE to MISEN.

STANDARD ARRIVAL CHART -INSTRUMENT

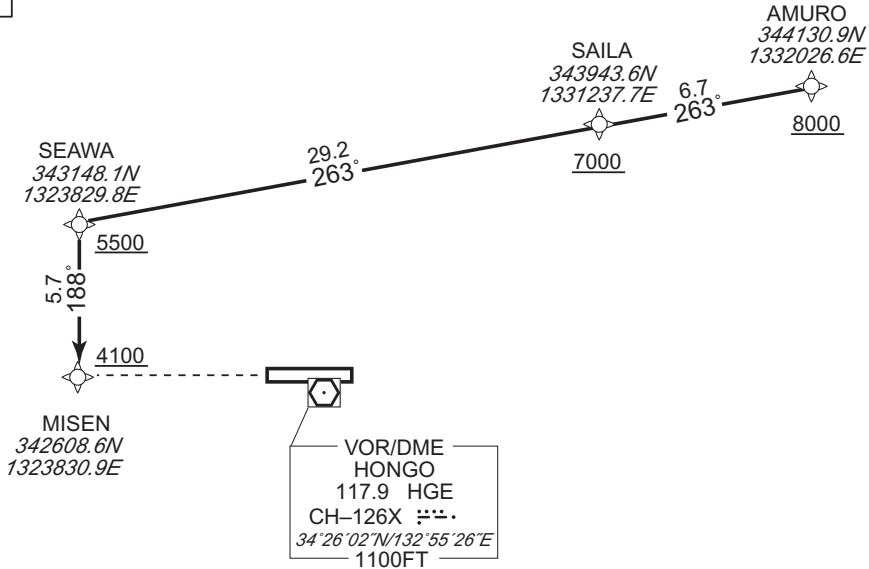
RJOA / HIROSHIMA RNAV STAR RWY10

MISEN ARRIVAL

RNP1

Note GNSS required.

VAR 8°W



From AMURO at or above 8000FT, to SAILA at or above 7000FT, to SEAWA at or above 5500FT, to MISEN at or above 4100FT.

CHANGE : PROC course. Note. Navigation Specification. VAR.

Serial Number	Path Descriptor	Waypoint Identifier	Fly Over	Course °M(°T)	Magnetic Variation	Distance (NM)	Turn Direction	Altitude (FT)	Speed (KIAS)	Vertical Angle	Navigation Specification
001	IF	AMURO	-	-	-8.1	-	-	+8000	-	-	RNP1
002	TF	SAILA	-	263 (254.5)	-8.1	6.7	-	+7000	-	-	RNP1
003	TF	SEAWA	-	263 (254.4)	-8.1	29.2	-	+5500	-	-	RNP1
004	TF	MISEN	-	188 (179.8)	-8.1	5.7	-	+4100	-	-	RNP1

STANDARD ARRIVAL CHART-INSTRUMENT

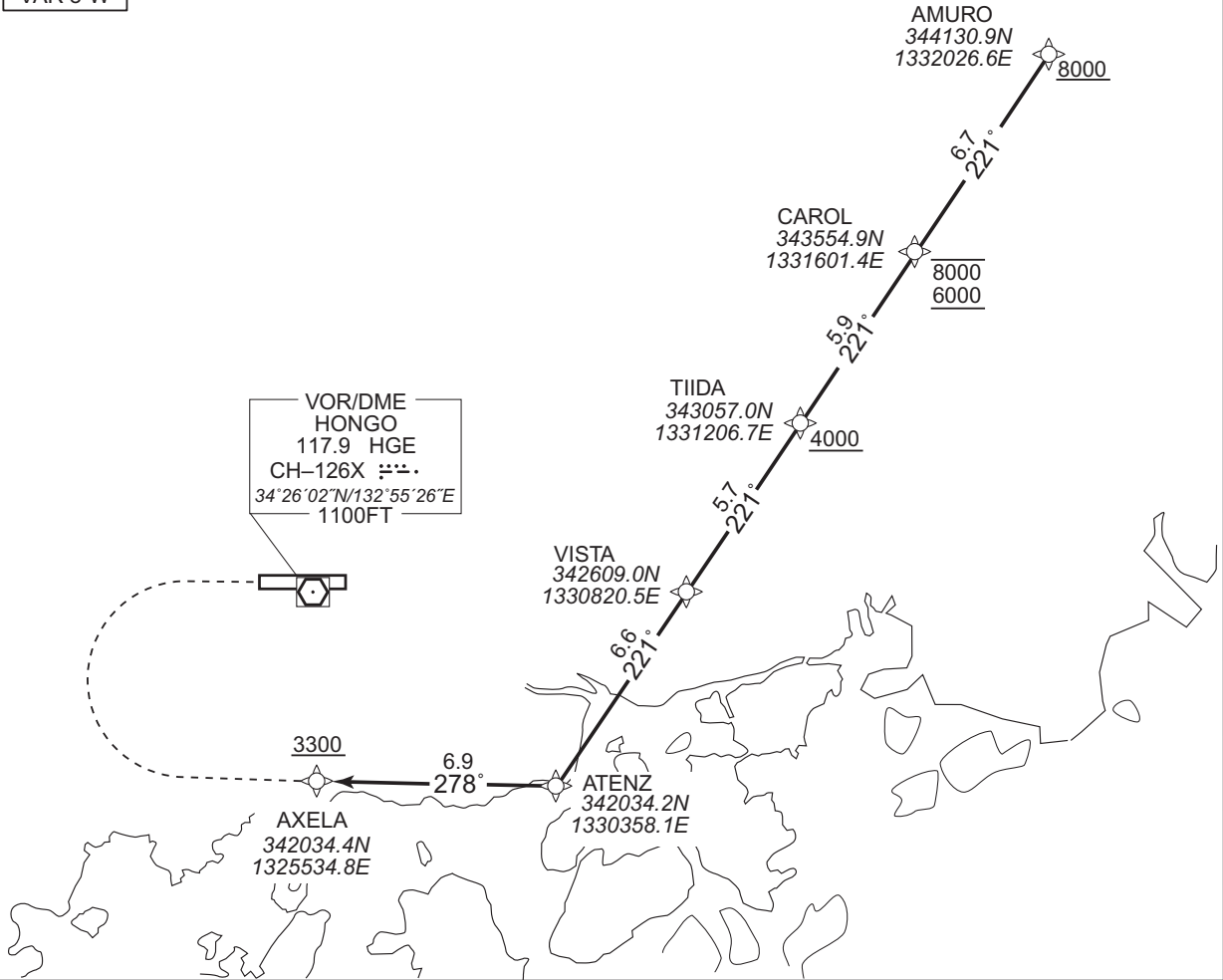
RJOA / HIROSHIMA

RNAV STAR RWY10

AXELA ARRIVAL RNP1

Note GNSS required.

VAR 8°W



From AMURO at or above 8000FT, to CAROL between 8000FT and 6000FT, to TIIDA at or above 4000FT, to VISTA, to ATENZ, to AXELA at or above 3300FT.

CHANGE : Navigation Specification(Basic RNP1 → RNP1).

Serial Number	Path Descriptor	Waypoint Identifier	Fly Over	Course °M(°T)	Magnetic Variation	Distance (NM)	Turn Direction	Altitude (FT)	Speed (KIAS)	Vertical Angle	Navigation Specification
001	IF	AMURO	-	-	-8.1	-	-	+8000	-	-	RNP1
002	TF	CAROL	-	221 (213.0)	-8.1	6.7	-	-8000 +6000	-	-	RNP1
003	TF	TIIDA	-	221 (213.0)	-8.1	5.9	-	+4000	-	-	RNP1
004	TF	VISTA	-	221 (212.9)	-8.1	5.7	-	-	-	-	RNP1
005	TF	ATENZ	-	221 (212.9)	-8.1	6.6	-	-	-	-	RNP1
006	TF	AXELA	-	278 (270.1)	-8.1	6.9	-	+3300	-	-	RNP1

STANDARD ARRIVAL CHART-INSTRUMENT

RJOA / HIROSHIMA

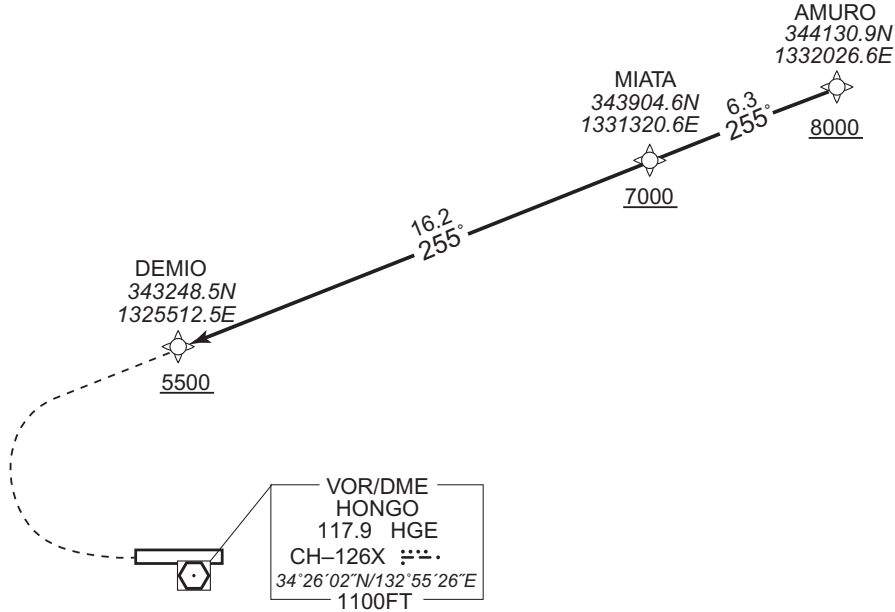
RNAV STAR RWY10

DEMIO ARRIVAL

RNP1

Note GNSS required.

VAR 8°W



From AMURO at or above 8000FT, to MIATA at or above 7000FT, to DEMIO at or above 5500FT.

CHANGE : Navigation Specification(Basic RNP1 → RNP1).

Serial Number	Path Descriptor	Waypoint Identifier	Fly Over	Course °M(°T)	Magnetic Variation	Distance (NM)	Turn Direction	Altitude (FT)	Speed (KIAS)	Vertical Angle	Navigation Specification
001	IF	AMURO	-	-	-8.1	-	-	+8000	-	-	RNP1
002	TF	MIATA	-	255 (247.4)	-8.1	6.3	-	+7000	-	-	RNP1
003	TF	DEMIO	-	255 (247.3)	-8.1	16.2	-	+5500	-	-	RNP1

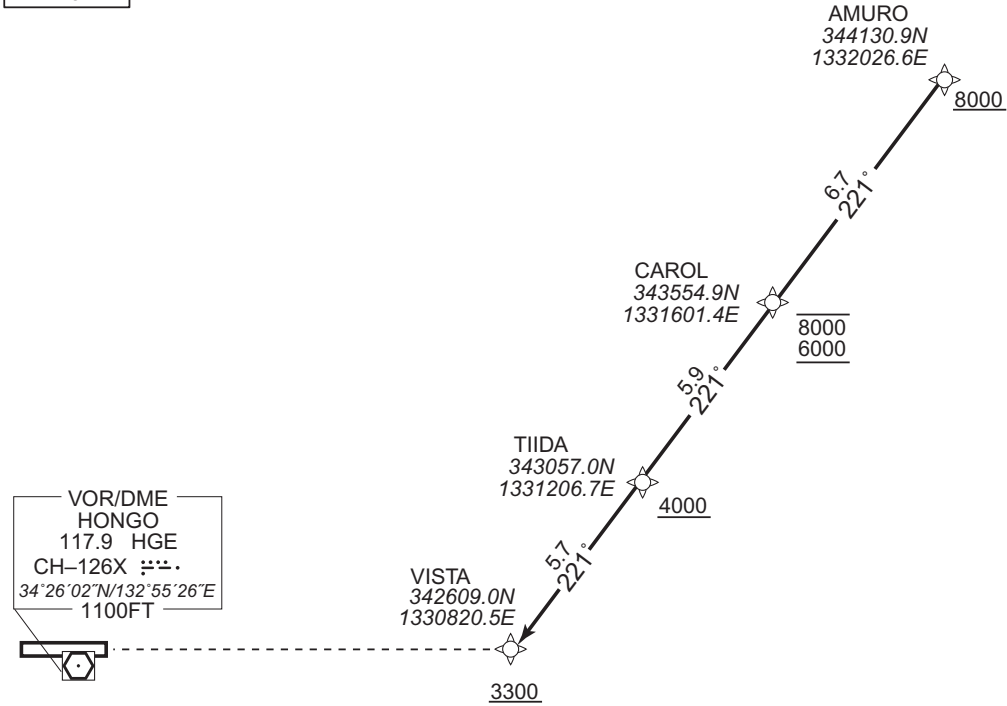
STANDARD ARRIVAL CHART -INSTRUMENT

RJOA / HIROSHIMA RNAV STAR RWY28

VISTA ARRIVAL RNP1

Note GNSS required.

VAR 8°W



From AMURO at or above 8000FT, to CAROL between 8000FT and 6000FT, to TIIDA at or above 4000FT, to VISTA at or above 3300FT.

CHANGE : VAR. Navigation Specification.

Serial Number	Path Descriptor	Waypoint Identifier	Fly Over	Course °M(°T)	Magnetic Variation	Distance (NM)	Turn Direction	Altitude (FT)	Speed (KIAS)	Vertical Angle	Navigation Specification
001	IF	AMURO	-	-	-8.1	-	-	+8000	-	-	RNP1
002	TF	CAROL	-	221 (213.0)	-8.1	6.7	-	-8000 +6000	-	-	RNP1
003	TF	TIIDA	-	221 (213.0)	-8.1	5.9	-	+4000	-	-	RNP1
004	TF	VISTA	-	221 (212.9)	-8.1	5.7	-	+3300	-	-	RNP1

STANDARD ARRIVAL CHART -INSTRUMENT

RJOA / HIROSHIMA

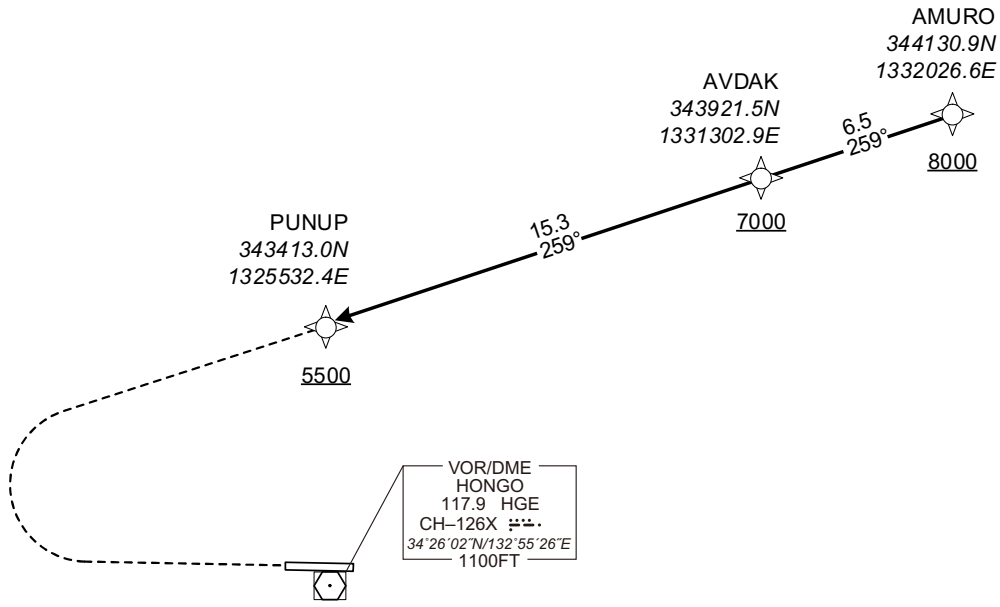
RNAV STAR RWY10

PUNUP ARRIVAL

RNP1

Note GNSS required.

VAR 8°W



From AMURO at or above 8000FT, to AVDAK at or above 7000FT, to PUNUP at or above 5500FT.

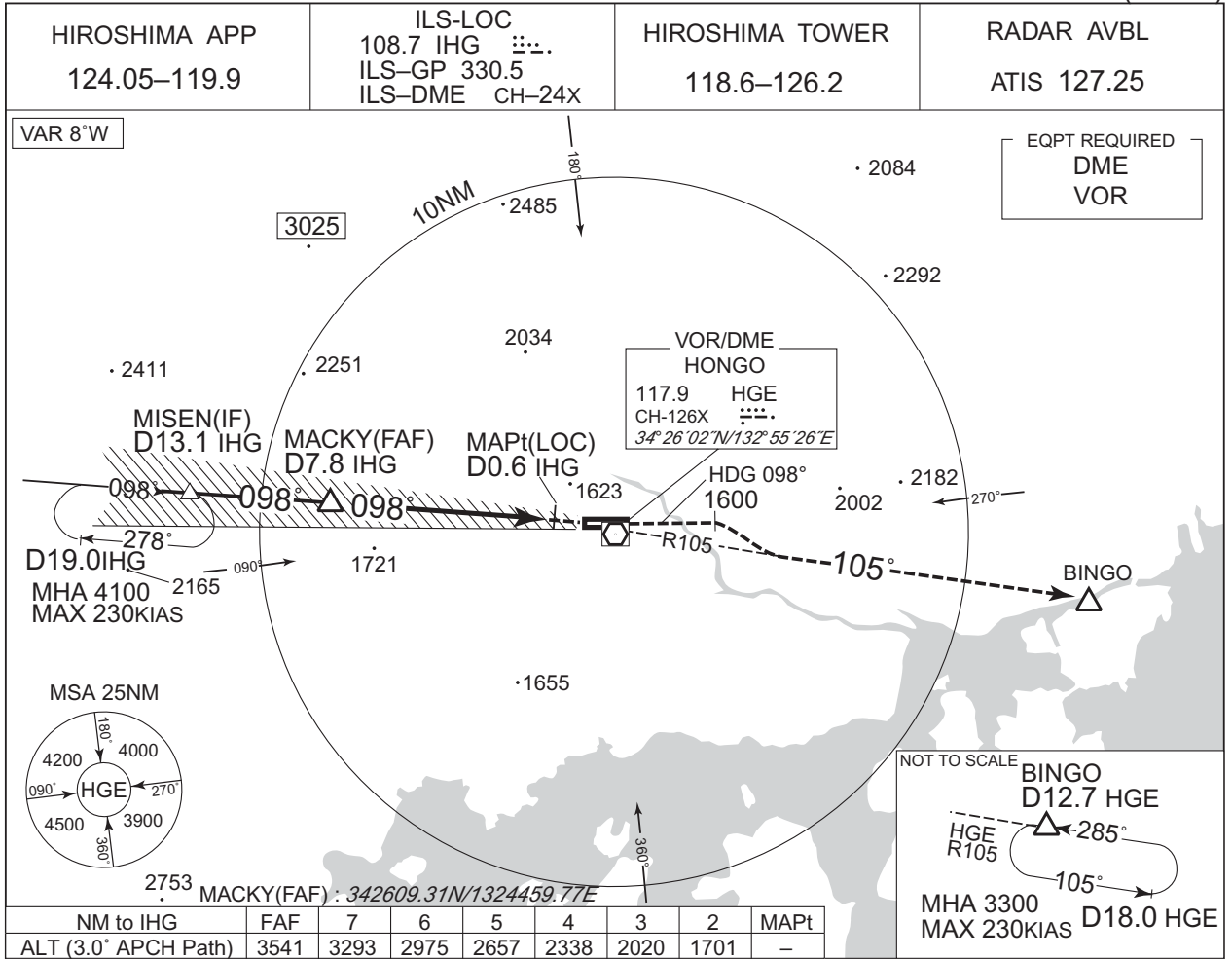
Serial Number	Path Descriptor	Waypoint Identifier	Fly Over	Course °M(°T)	Magnetic Variation	Distance (NM)	Turn Direction	Altitude (FT)	Speed (KIAS)	Vertical Angle	Navigation Specification
001	IF	AMURO	—	—	-8.1	—	—	+8000	—	—	RNP1
002	TF	AVDAK	—	259 (250.5)	-8.1	6.5	—	+7000	—	—	RNP1
003	TF	PUNUP	—	259 (250.4)	-8.1	15.3	—	+5500	—	—	RNP1

CHANGE : Navigation Specification(Basic RNP1 → RNP1).

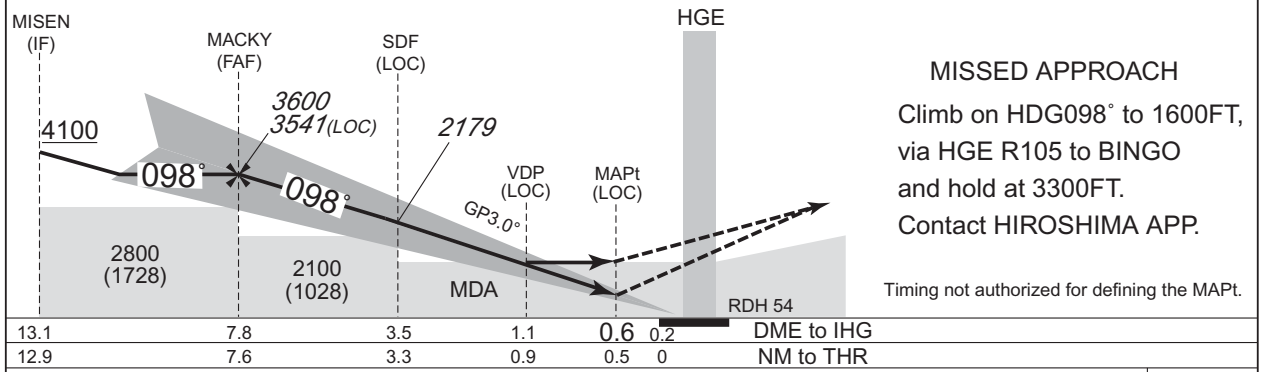
INSTRUMENT APPROACH CHART

RJOA / HIROSHIMA

ILS Z or LOC RWY10 (CAT III)



CHANGE : PROC renamed. Description of VAR.



Missed APCH climb gradient MNM 5.0%

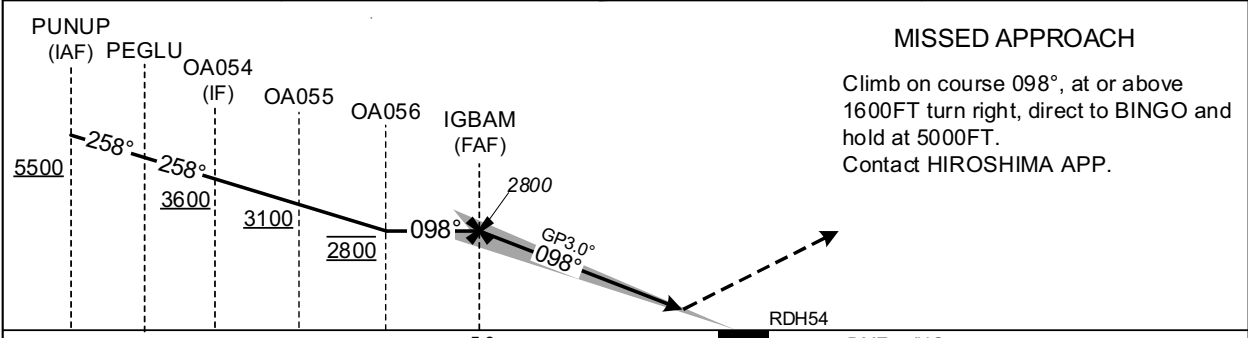
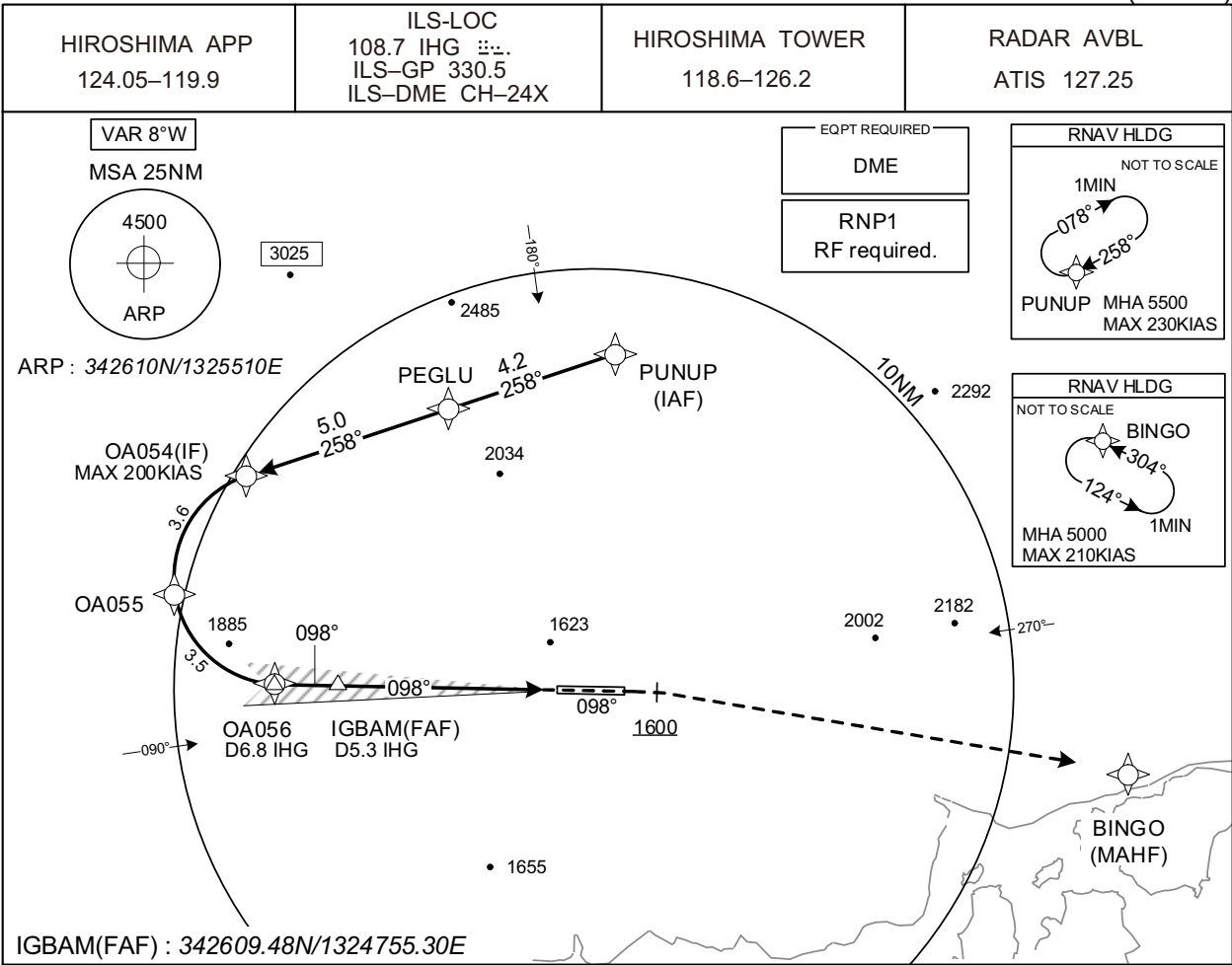
MINIMA		THR elev. 1072		AD elev. 1086						
CAT	CAT III	CAT II		CAT I		LOC	CIRCLING			
	RVR	DA(H)	RA	RVR	DA(H)	RVR/CMV	MDA(H)	RVR/CMV	MDA(H)	VIS
A	100	Not applicable	1272 (200)	550	1410 (338)	1000	1540 (454)	1510 (424)	1600	
B									2400	
C									2400	
D									3200	

MINIMA with Missed APCH climb gradient of 2.5% are not established.
Circling to SOUTH side of RWY only
Values of RA may increase or decrease rapidly affected by terrain until IHG 0.3DME.

INSTRUMENT APPROACH CHART

RJOA / HIROSHIMA

ILS Y RWY10(CAT III)



6.8	5.3	0.2	DME to IHG
6.7	5.2	0	NM to THR

Missed APCH climb gradient MNM 5.0%

MINIMA THR elev. 1072 AD elev. 1086

CAT	CAT III			CAT II			CAT I		CIRCLING	
	RVR	DA(H)	RA	RVR	DA(H)	RVR/CMV	MDA(H)	VIS		
A							1510 (424)	1600		
B							1540 (454)			
C	100	Not applicable			1272 (200)	550	1640 (554)	2400		
D							1640 (554)	3200		

MINIMA with Missed APCH climb gradient of 2.5% are not established.
Circling to SOUTH side of RWY only
Values of RA may increase or decrease rapidly affected by terrain until IHG 0.3DME.

CHANGE : Navigation Specification(Basic RNP1 → RNP1).

INSTRUMENT APPROACH CHART

RJOA / HIROSHIMA

ILS Y RWY10(CAT III)

Coding Table

Serial Number	Path Descriptor	Waypoint Identifier	Fly Over	Course °M(°T)	Magnetic Variation	Distance (NM)	Turn Direction	Altitude (FT)	Speed (KIAS)	Vertical Angle	Navigation Specification
001	IF	PUNUP	-	-	-8.1	-	-	+5500	-	-	RNP1
002	TF	PEGLU	-	258 (250.3)	-8.1	4.2	-	-	-	-	RNP1
003	TF	OA054	-	258 (250.2)	-8.1	5.0	-	+3600	-200	-	RNP1
004	RF Center: OARF3 r=2.55NM	OA055	-	-	-8.1	3.6	L	+3100	-	-	RNP1
005	RF Center: OARF3 r=2.55NM	OA056	-	-	-8.1	3.5	L	2800	-	-	RNP1

001	CA	-	-	098 (090.0)	-8.1	-	-	+1600	-	-	RNP1
002	DF	BINGO	-	-	-8.1	-	R	5000	-	-	RNP1

Path	Waypoint Identifier	Inbound Course °M(°T)	Magnetic Variation	Outbound Time (MIN)	Turn Direction	Minimum Altitude (FT)	Maximum Altitude (FT)	Speed (KIAS)	Navigation Specification
Hold	PUNUP	258 (250.3)	-8.1	1.0 (-14000)	R	5500	FL140	-230 (-14000)	RNP1
Hold	BINGO	304 (296.1)	-8.1	1.0 (-14000)	L	5000	FL140	-210 (-14000)	RNP1

Waypoint Coordinates

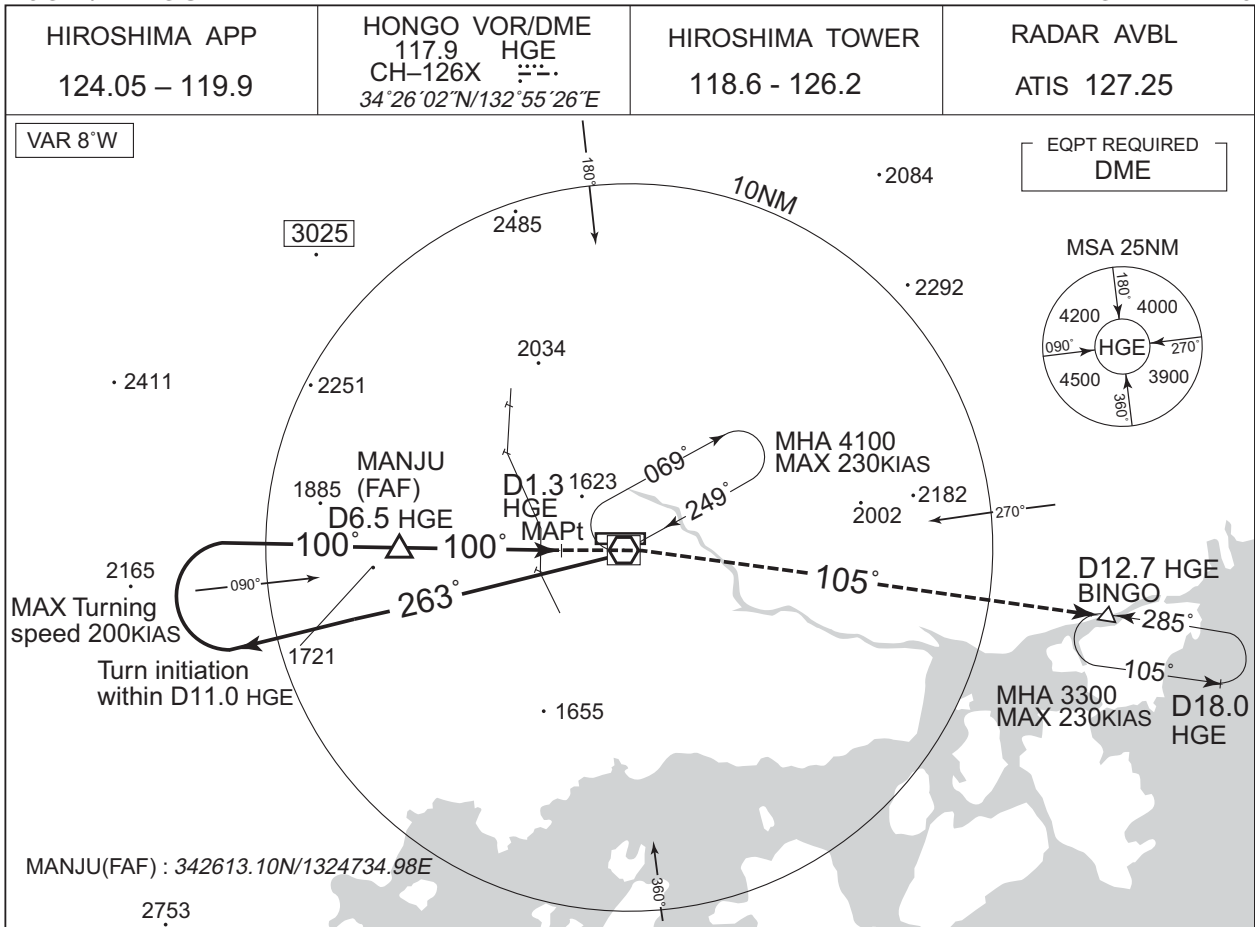
Waypoint Identifier	Coordinates	RF Arc Center Identifier	Coordinates
PUNUP	343412.97N / 1325532.36E	OARF3	342842.60N / 1324606.23E
PEGLU	343248.19N / 1325045.55E		
OA054	343106.85N / 1324503.74E		
OA055	342814.80N / 1324304.26E		
OA056	342609.36N / 1324606.51E		
BINGO	342425.72N / 1331040.68E		

CHANGE : Correction of misdescription(HLDG speed, Minimum ALT at BINGO).

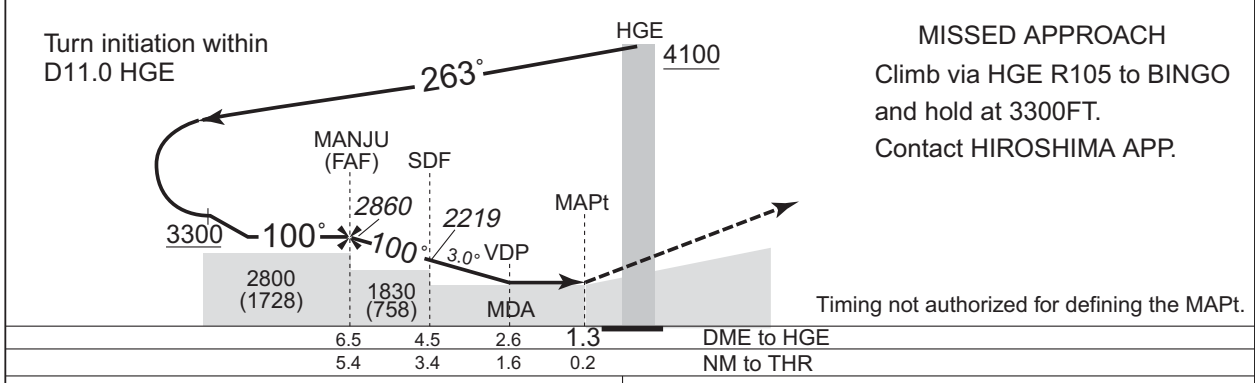
INSTRUMENT APPROACH CHART

RJOA / HIROSHIMA

VOR RWY10



NM to HGE	FAF	6	5	4	3	MAPt
ALT (3.0° APCH Path)	2860	2701	2383	2064	1746	-



MINIMA	THR elev. 1072	AD elev. 1086
--------	----------------	---------------

CAT	CIRCLING	
	MDA(H)	VIS
A	1000	1600
B	1600 (528)	1200
C		2400
D	1600	3200

Circling to SOUTH side of RWY only.

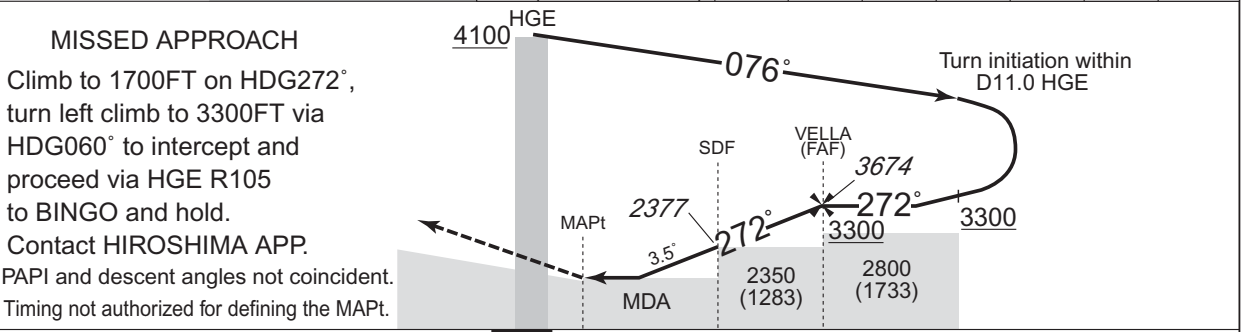
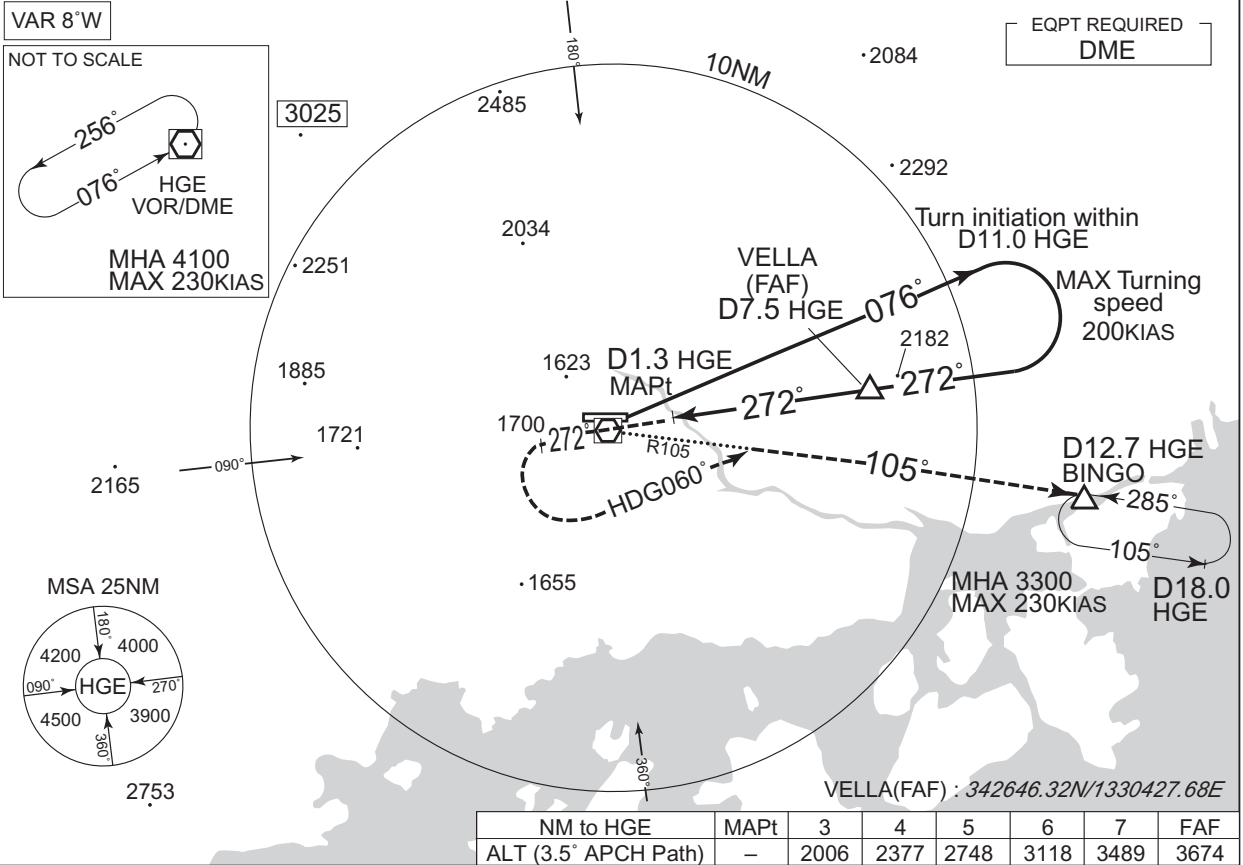
CHANGE : Description of VAR.

INSTRUMENT APPROACH CHART

RJOA / HIROSHIMA

VOR RWY28

HIROSHIMA APP 124.05 – 119.9	HONGO VOR/DME 117.9 HGE CH-126X 34°26'02"N/132°55'26"E	HIROSHIMA TOWER 118.6 - 126.2	RADAR AVBL ATIS 127.25
---------------------------------	---	----------------------------------	---------------------------



DME to HGE	0	1.3	4.0	7.5
NM to THR	0	0.8	3.4	6.9

MINIMA		THR elev. 1067	AD elev. 1086
CAT	CIRCLING		
	MDA(H)	RVR/CMV	MDA(H) VIS
A	1420 (353)	1200	1510 (424) 1600
B	1450 (383)	1300	1540 (454) 2400
C	1480 (413)	1400	1640 (554) 3200
D	1500 (433)	1600	

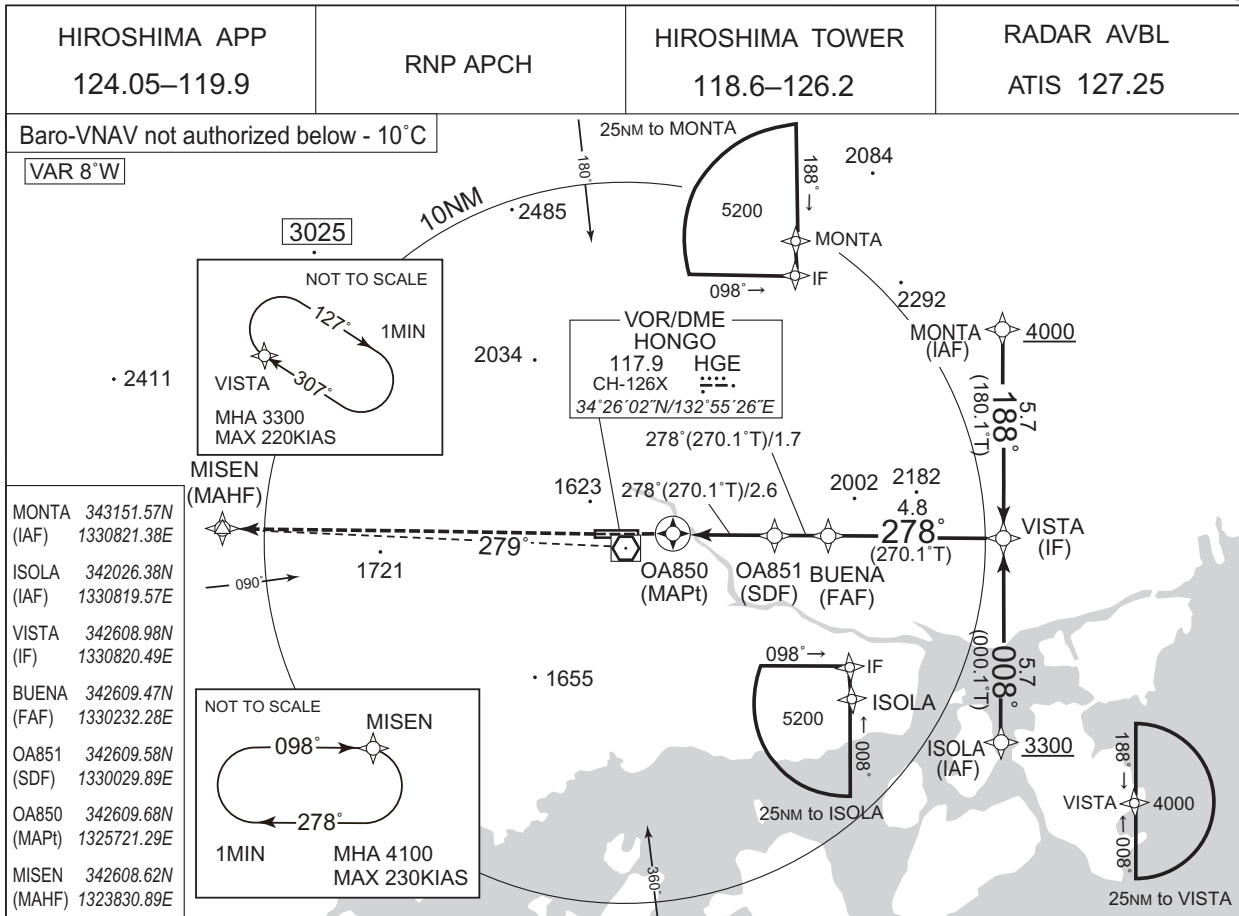
CHANGE : Description of VAR.

Circling to SOUTH side of RWY only.
VDP not applicable.

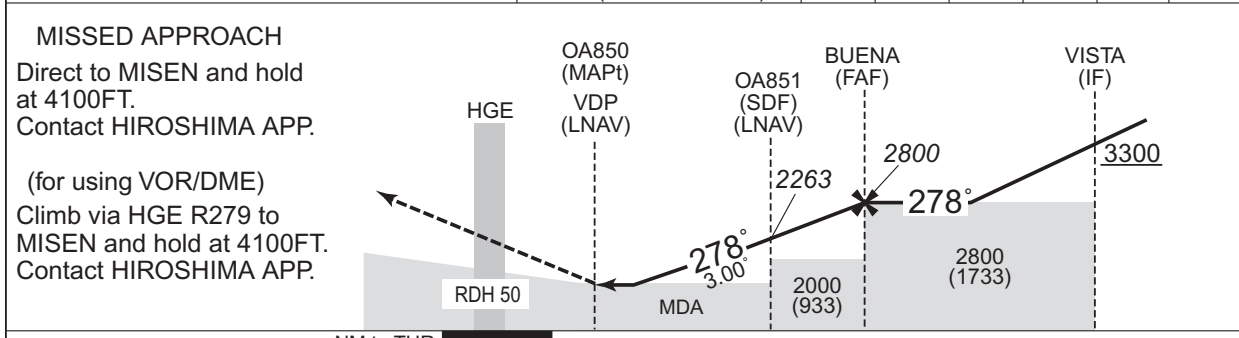
INSTRUMENT APPROACH CHART

RJOA / HIROSHIMA

RNP RWY28



NM to Next Fix	MAPt	1	2	3	4	FAF
ALT (3.0° APCH Path)	-	1753	2072	2390	2709	2800



MISSED APCH climb gradient MNM 4.0%

CAT	LNAV/VNAV		LNAV		CIRCLING	
	DA(H)	RVR/CMV	MDA(H)	RVR/CMV	MDA(H)	VIS
A	1440 (373)	1200	1440 (373)	1200	1510 (424)	1600
B		1300		1300	1540 (454)	
C		1400		1400		2400
D		1600		1600	1640 (554)	3200

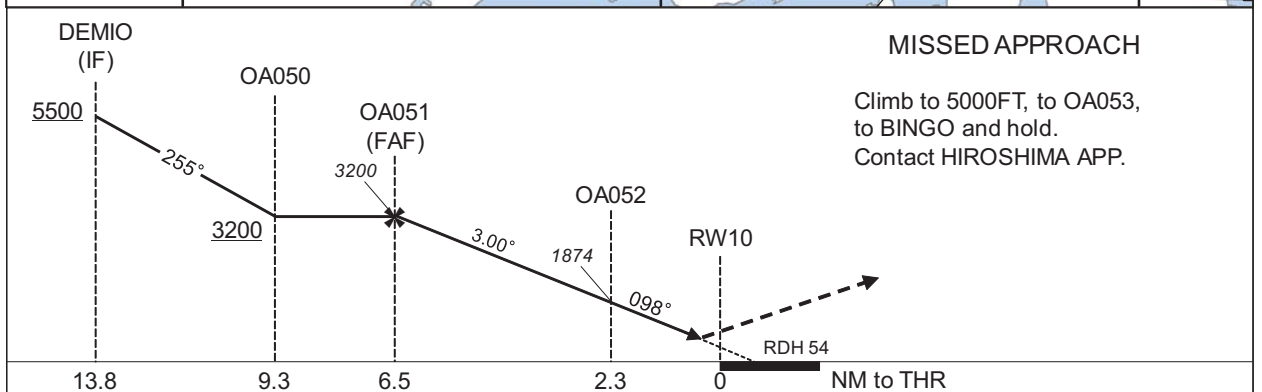
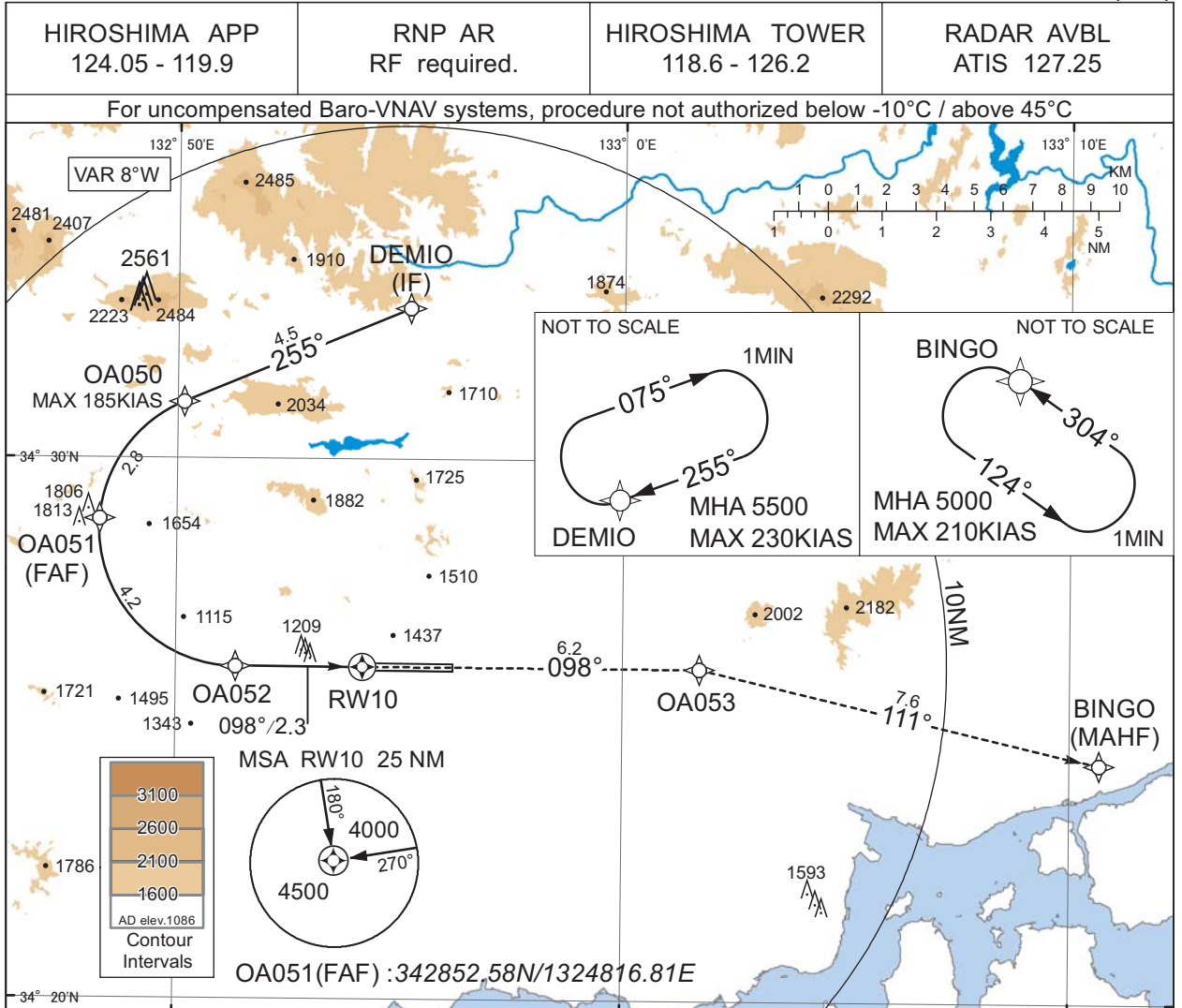
Circling to SOUTH side of RWY only.
MINIMA with Missed APCH climb gradient of 2.5% are not established.

CHANGE : Description of VAR.

INSTRUMENT APPROACH CHART

RJOA / HIROSHIMA

RNP Z RWY10(AR)



CHANGE : Description of VAR.

Missed APCH climb gradient MNM 5.0%

MINIMA	THR elev. 1072		AD elev. 1086	
	RNP 0.10		RNP 0.30	
CAT	DA(H)	RVR/CMV	DA(H)	RVR/CMV
A	-	-	-	-
B	-	-	-	-
C	-	1000	-	1200
D	1515(443)	1400	1598(526)	1600

MINIMA with Missed APCH climb gradient of 2.5% are not established.

Authorization Required

INSTRUMENT APPROACH CHART

RJOA / HIROSHIMA

RNP Z RWY10(AR)

Coding Table

Serial Number	Path Descriptor	Waypoint Identifier	Fly Over	Course °M(°T)	Magnetic Variation	Distance (NM)	Turn Direction	Altitude (FT)	Speed (KIAS)	VPA/RDH (°/FT)	RNP Value
001	IF	DEMIO	-	-	-8.1	-	-	+5500	-	-	-
002	TF	OA050	-	255 (247.1)	-8.1	4.5	-	+3200	-185	-	1.0
003	RF Center: OARF1 r=2.54NM	OA051	-	-	-8.1	2.8	L	3200	-	-	1.0
004	RF Center: OARF1 r=2.54NM	OA052	-	-	-8.1	4.2	L	1874	-	-3.00	0.10 0.30
005	TF	RW10	Y	098 (090.0)	-8.1	2.3	-	1126	-	-3.00/54	0.10 0.30
006	TF	OA053	-	098 (090.0)	-8.1	6.2	-	-	-	-	1.0
007	TF	BINGO	-	111 (103.2)	-8.1	7.6	-	5000	-	-	1.0

Path	Waypoint Identifier	Inbound Course °M(°T)	Magnetic Variation	Outbound Time (MIN)	Turn Direction	Minimum Altitude (FT)	Maximum Altitude (FT)	Speed (KIAS)	RNP Value
Hold	DEMIO	255 (247.1)	-8.1	1.0 (-14000)	R	5500	FL140	-230(-14000)	1.0
Hold	BINGO	304 (296.1)	-8.1	1.0 (-14000)	L	5000	FL140	-210(-14000)	1.0

Waypoint Coordinates

Waypoint Identifier	Coordinates	RF Arc Center Identifier	Coordinates
DEMIO	343248.47N / 1325512.50E	OARF1	342842.28N / 1325120.72E
OA050	343102.99N / 1325009.23E		
OA051	342852.58N / 1324816.81E		
OA052	342609.63N / 1325120.84E		
RW10	342609.69N / 1325411.25E		
OA053	342609.67N / 1330143.51E		
BINGO	342425.72N / 1331040.68E		

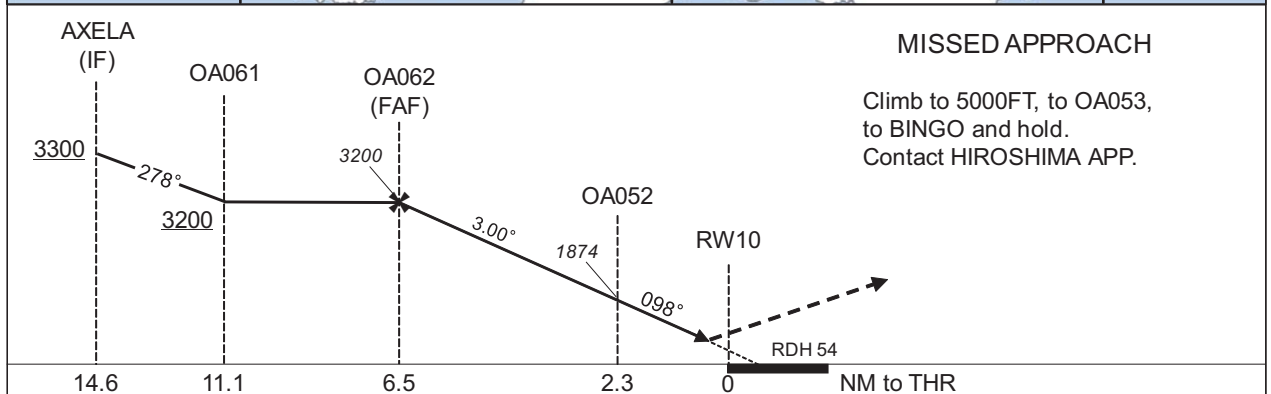
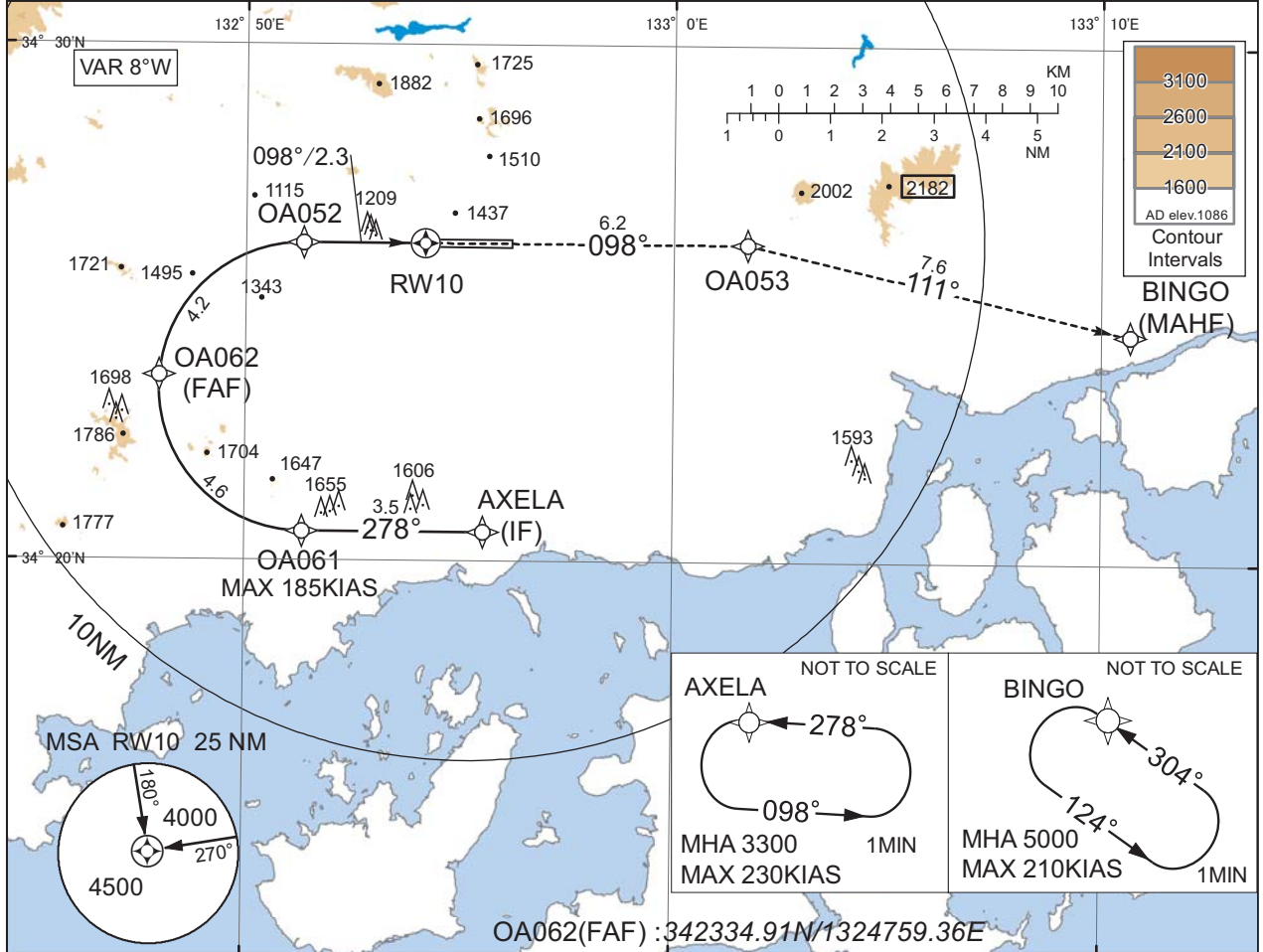
INSTRUMENT APPROACH CHART

RJOA / HIROSHIMA

RNP Y RWY10(AR)

HIROSHIMA APP 124.05 - 119.9	RNP AR RF required.	HIROSHIMA TOWER 118.6 - 126.2	RADAR AVBL ATIS 127.25
---------------------------------	------------------------	----------------------------------	---------------------------

For uncompensated Baro-VNAV systems, procedure not authorized below -10°C / above 45°C



Missed APCH climb gradient MNM 5.0%

MINIMA	THR elev. 1072	AD elev. 1086		
CAT	RNP 0.10		RNP 0.30	
	DA(H)	RVR/CMV	DA(H)	RVR/CMV
A	-	-	-	-
B	-	-	-	-
C	1515(443)	1000	1598(526)	1200
D	-	1400	-	1600

MINIMA with Missed APCH climb gradient of 2.5% are not established.

Authorization Required

CHANGE : Description of VAR.

INSTRUMENT APPROACH CHART

RJOA / HIROSHIMA

RNP Y RWY10(AR)

Coding Table

Serial Number	Path Descriptor	Waypoint Identifier	Fly Over	Course °M(°T)	Magnetic Variation	Distance (NM)	Turn Direction	Altitude (FT)	Speed (KIAS)	VPA/RDH (°/FT)	RNP Value
001	IF	AXELA	-	-	-8.1	-	-	+3300	-	-	1.0
002	TF	OA061	-	278 (270.0)	-8.1	3.5	-	+3200	-185	-	1.0
003	RF Center: OARF2 r=2.79NM	OA062	-	-	-8.1	4.6	R	3200	-	-	1.0
004	RF Center: OARF2 r=2.79NM	OA052	-	-	-8.1	4.2	R	1874	-	-3.00	0.10 0.30
005	TF	RW10	Y	098 (090.0)	-8.1	2.3	-	1126	-	-3.00/54	0.10 0.30
006	TF	OA053	-	098 (090.0)	-8.1	6.2	-	-	-	-	1.0
007	TF	BINGO	-	111 (103.2)	-8.1	7.6	-	5000	-	-	1.0

Path	Waypoint Identifier	Inbound Course °M(°T)	Magnetic Variation	Outbound Time (MIN)	Turn Direction	Minimum Altitude (FT)	Maximum Altitude (FT)	Speed (KIAS)	RNP Value
Hold	AXELA	278 (270.0)	-8.1	1.0 (-14000)	L	3300	FL140	-230(-14000)	1.0
Hold	BINGO	304 (296.1)	-8.1	1.0 (-14000)	L	5000	FL140	-210(-14000)	1.0

Waypoint Coordinates

Waypoint Identifier	Coordinates	RF Arc Center Identifier	Coordinates
AXELA	342034.40N / 1325534.80E	OARF2	342321.96N / 1325120.96E
OA061	342034.29N / 1325121.21E		
OA062	342334.91N / 1324759.36E		
OA052	342609.63N / 1325120.84E		
RW10	342609.69N / 1325411.25E		
OA053	342609.67N / 1330143.51E		
BINGO	342425.72N / 1331040.68E		

RJOA / HIROSHIMA

Visual REP



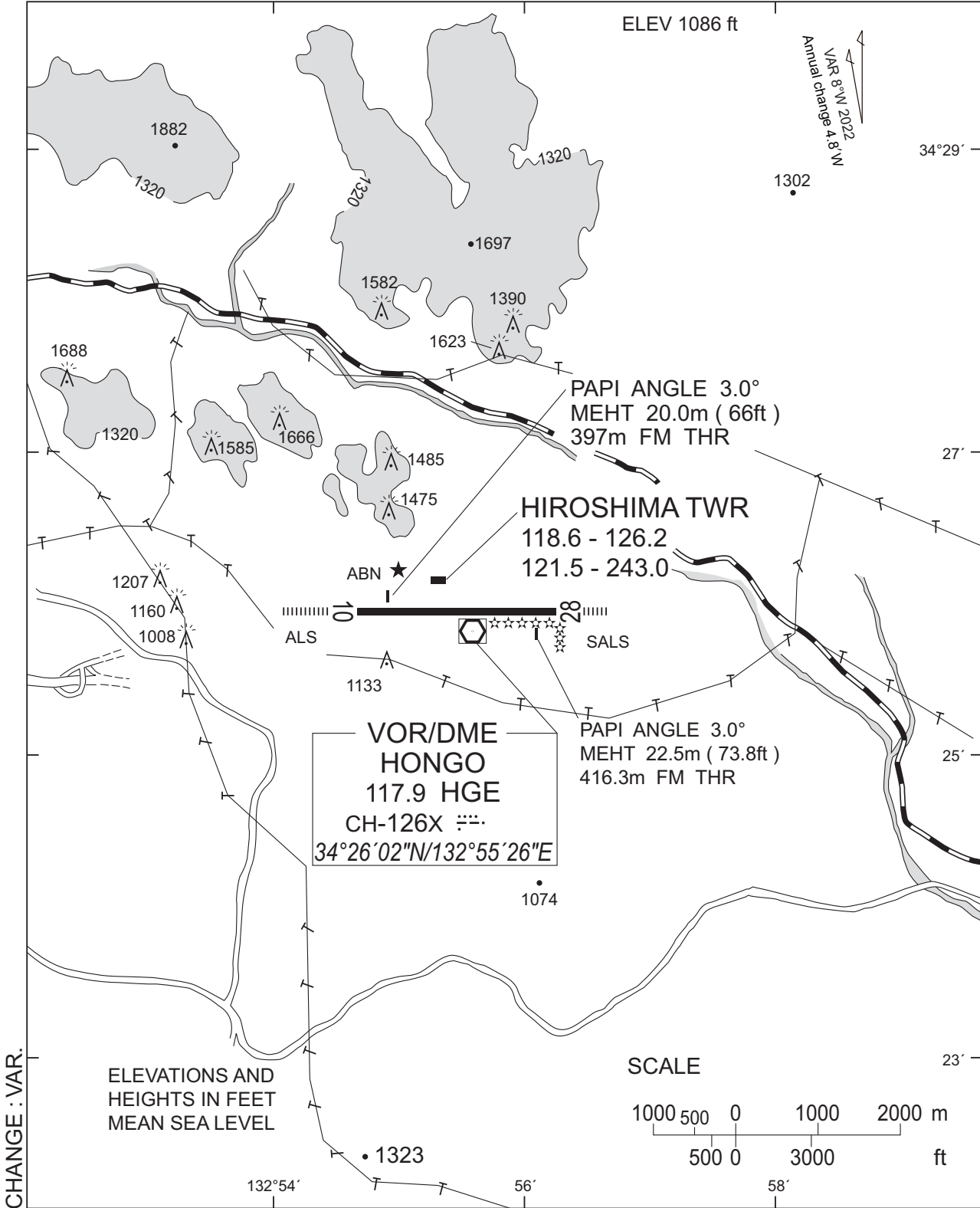
※図中に標高を示す数字がある場合、単位はメートル(m)である。The unit of measurement used to express elevation is meter(m).

CHANGE : VAR.

Call sign	BRG / DIST from ARP	Remarks
白竜 Hakuryu	345°T / 4.3NM	湖 Lake
小佐木 Kosagi	115°T / 10.1NM	小佐木島 Kosagi - Island
竹原 Takehara	184°T / 5.8NM	竹原駅 Railway Station
三永サウス Minaga South	251°T / 8.4NM	東広島駅 Railway Station
新庄 Shinjo	209°T / 2.9NM	新庄交差点 Shinjo Intersection

RJOA / HIROSHIMA

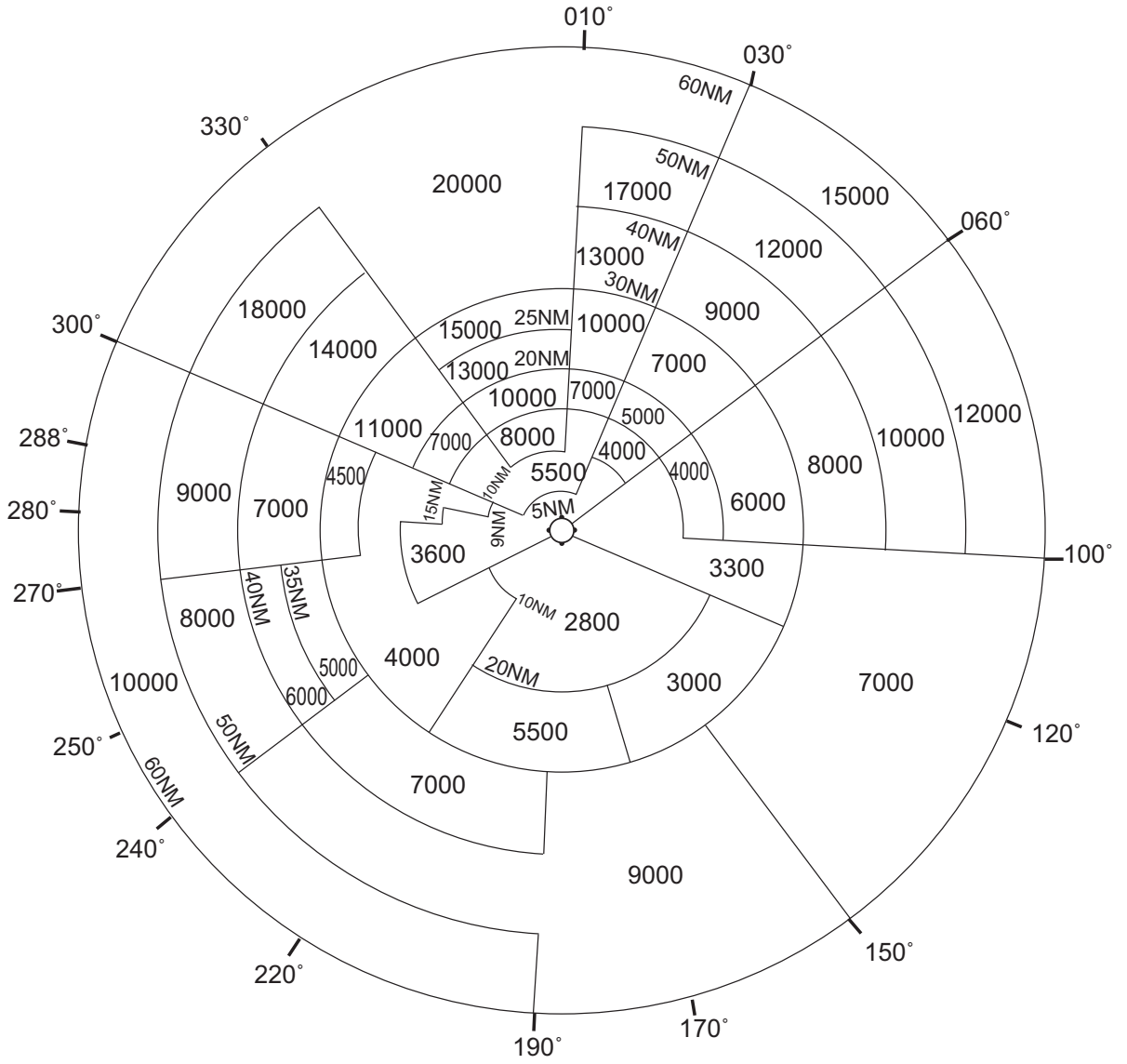
LDG CHART



RJOA / HIROSHIMA

Minimum Vectoring Altitude CHART

VAR 8°W (2022)



CENTER : 342602N/1325458E (RADAR SITE)

CHANGE : VAR.